



JUNE 1908  
WILLIAMSTOWN  
KY.

HIGH (MILL) 1

LICKING

PARIS

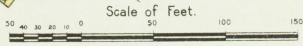
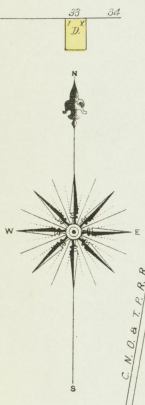
BLAINE AV.

N. MAIN

NORTH

S. MAIN

S. MAIN



THE WILLIAMSTOWN ROLLER MILLS  
W. RILEY MILL  
The Williamstown Roller Mills were built by W. Riley in 1875. They were the first roller mills in the county. The mill was destroyed by fire in 1908. The site is now a parking lot for the Williamstown Creamery.

WILLIAMSTOWN CREAMERY  
FORMERLY WILLIAMSTOWN MILLS.  
NOT IN OPERATION.  
No Warehouse  
Belongs. Millrent  
Power, Steam  
Engines.

FRESBYRN CHURCH

M.E. CHURCH SOUTH

THE THOMPSON HOTEL

CLARK HOTEL

COURT HO.

J. T. SCOTT'S TOBACCO W. HO.

MOORE'S HOTEL

R. T. DICKERSON'S TOBACCO W. HO.

JOHNSON HOTEL

CLARK HOTEL

