



DATE OF CONGRESS JUN 10 1906

WATER FACILITIES

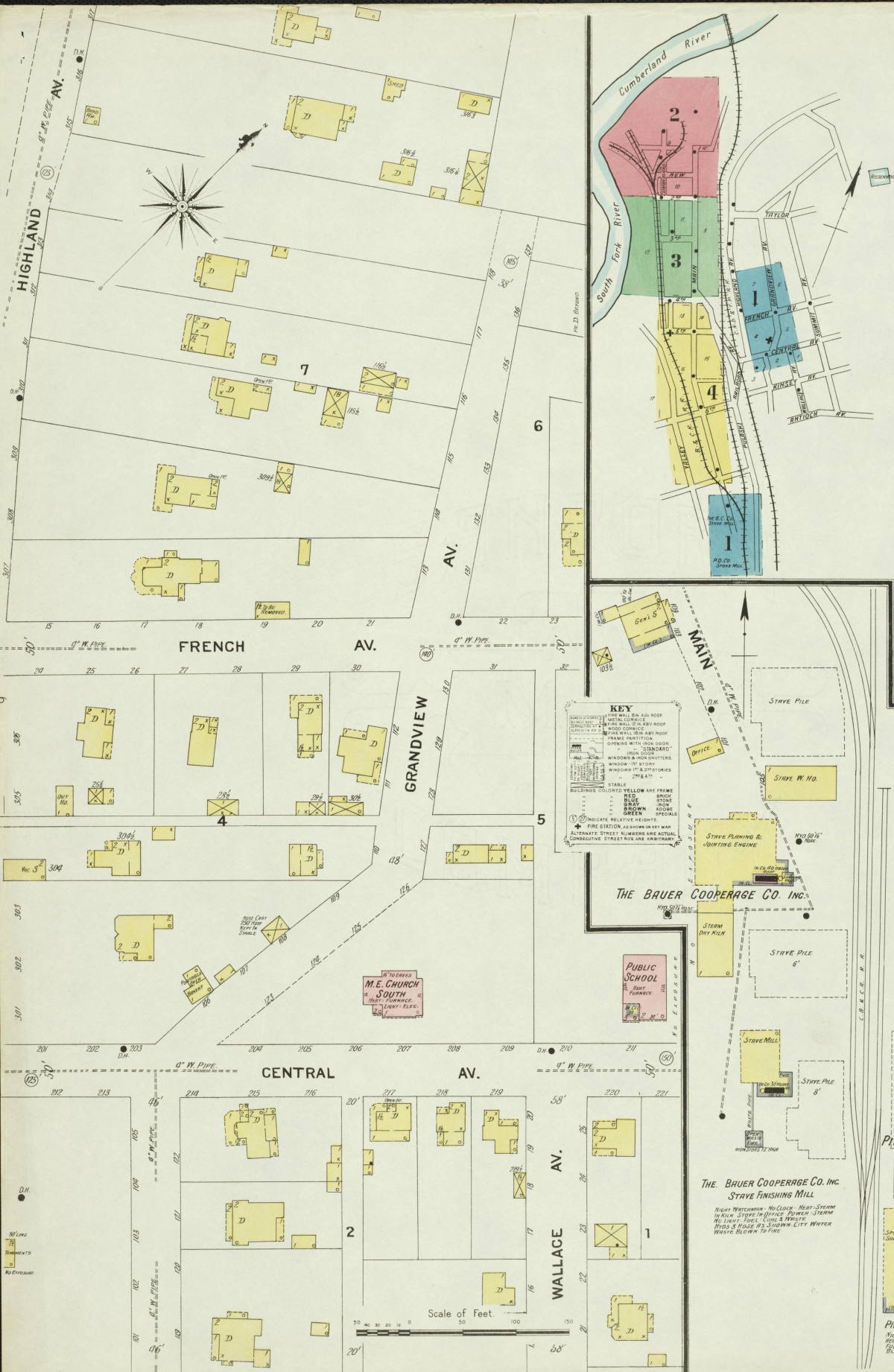
Burnside Water Works Gravity System Supply from South Fork River is Pumped to Reservoir at Mill... Capacity 2,500,000 Gals. by Dupont Lugsley Pump... 1 Capacity 2,500,000 Gals. by Dupont Lugsley Pump... 1 Capacity 2,500,000 Gals. by Dupont Lugsley Pump...

FIRE DEPT.

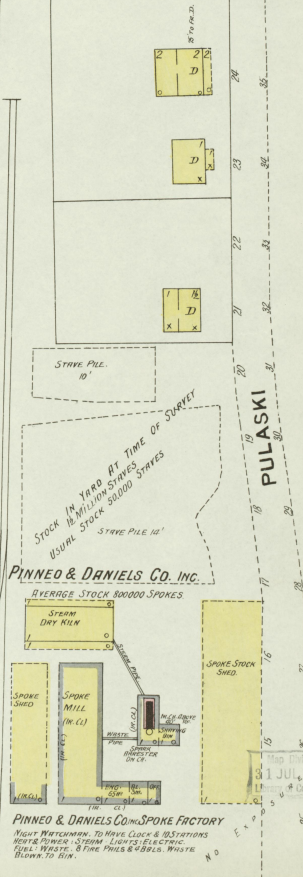
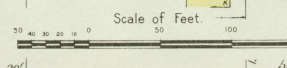
San. L. Paid Chief Eleven Men 2 Hoss Carts 500 Hoses 4000 ft. Lumber Co. have Hose Cart With 500 ft. Hoses 10-12 ft. Fire Ladder & Trolley Streets Not Paved Public Lights Electric

INDEX SPECIALS.

Table with columns for company name, special type, and sheet number. Includes entries like Ayer & Lord Tie Co., Bauer Cooperage Co., Burnside Excelsior Co., Electric Light and Power Co., Machine Shop, Mfg. Co., Roller Mill, C. B. & C. R. R. Co., Saw Mill, Freight Houses, Chicago Veneer Co., Cumberland Gro. Co., Drake, W. B. & Co., Lumber Yard, Fire Department, Hotel Dick & Denney, Huntington Produce Co., Kentucky Lumber Co., McKeechic Bros. Roller Mills, Methodist Episcopal Church (South), Merchants Hardware and Grocer Co., Muskegon Boiler Works, National Supply Co., Pinneo & Daniels Co., Presbyterian Church, Pruitt House, Public School, Seven Gables Hotel, Skating Rink (roller), Standard Oil Co., Taylor, G. P. Co., Produce, &c., Vaughan, J. D., Roller Mill.

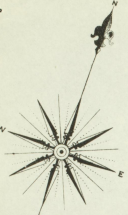


KEY: METAL PORCELAIN, METAL LOUVER, METAL FRONTS, METAL HANDS, METAL SPINDLES, METAL WHEELS, METAL ROLLERS, METAL GEAR, METAL GEAR CASE, METAL SHAFT, METAL HOIST, METAL CRANE, METAL RIGGING, METAL BRACKET, METAL PLATE, METAL BOLT, METAL NUT, METAL WASHER, METAL RIVET, METAL SCREW, METAL PIPE, METAL VALVE, METAL FITTING, METAL CONNECTOR, METAL FLANGE, METAL COUPLER, METAL JOINT, METAL HOOK, METAL SHackle, METAL CHAIN, METAL CABLE, METAL ROPe, METAL WIRE, METAL STRAP, METAL BELT, METAL ROLLER, METAL PULLEY, METAL DRIVE, METAL MOTOR, METAL GENERATOR, METAL TRANSFORMER, METAL SWITCH, METAL CONTROLLER, METAL RELAY, METAL TIMER, METAL ALARM, METAL BELL, METAL GONG, METAL CLAY, METAL POTTERY, METAL BRICK, METAL TILE, METAL ROOF, METAL CORRUGATED, METAL SHEET, METAL PLATE, METAL FLAT, METAL CURVED, METAL CONVEX, METAL CONCAVE, METAL TUBULAR, METAL CIRCULAR, METAL SQUARE, METAL RECTANGULAR, METAL TRIANGULAR, METAL POLYGONAL, METAL IRREGULAR, METAL COMPOSITE, METAL HYBRID, METAL MIXED, METAL UNIDENTIFIED.



PINNEO & DANIELS CO. INC. SPOKE FACTORY

May 1908  
BURNSIDE  
KY.



NIGHT WATCHMAN: ECU MARKED CLOCK; 6 STATIONS IN SAW MILL, HALF HOURLY ROUNDS; 6 STATIONS IN WOOD & SHEDS, HOURLY ROUNDS;  
POWER STEAM: HEAT STOVE IN OFFICE LIGHTS ELECTRIC;  
FUEL: SLICES IN WASTE; WAGONS AND HOLES AS SHOWN;  
FIRE PAILS & BARRELS WELL DISTRIBUTED; 40 GALLON CHEMICAL TRUCK IN MILL WITH 6 PAILS;  
SMOKE: RESTRICTED ON CHIMNEYS; REST OPEN MOST OF TIME; SHAWINGS BLOWN TO BOILER HOUSE.

775 TO PRIVATE LUMBER YARD OF HOWARD LUMBER CO

MUSKEGON BOILER WKS  
WASTE FURNACE  
1" WATER CHIMNEY BETWEEN WARE & OUTSIDE WALLS

BURNSIDE ELEC LIGHT & POWER CO  
ELECTRIC LIGHT PLANT  
POWER STEAM: FUEL COAL  
40 FIRE APPARATUS

Geo P Taylor Co  
Paints & Enamels

Mason's Hardware & Graces  
Hardware

STOCK YARDS

C.B. & C.R.R. FREIGHT HO'S

CUMBERLAND

DRESSED LUMBER SHED  
ELEVATED TRAMWAY  
PLATFORM  
PLANING MILL  
ELEVATED TRAMWAY

FIRST

8

MAIN

NEW

10

HUNTINGTON PRODUCE & FEED CO

BURNSIDE MFG CO  
SAW MILL & MFRS OF CEDAR FRUITS

WATERWORKS: WAREHOUSE OF MILL BY 6" WINDS RAM REST STEAM; FUEL COAL & WASTE POWER STEAM; NO LIGHTS; WIND & WISE NO SHOW

THE NATIONAL SUPPLY CO  
OIL, MEAL, SUPPLIES

4" W. PIPE

BURNSIDE MACHINE SHOP

SECOND

3

Scale of Feet.  
0 50 100 150

Map Division  
31 JUL 1905  
U.S. Army of Engineers

90

MAY 1908  
BURNSIDE  
KY.

**McKENECHIE BROS.**  
BURNSIDE ROLLER MILLS.  
40 HATCHMAN - POWER STEAM -  
MOUNTED - FUEL COILS -  
TO HAVE 100' 1" HOSE -  
MACHINERY:  
1572, 2-3000, DOUBLE ROLLS -  
1 THREE HIGH CORN MILL -  
1 FLOUR PACKER -  
200 PL. 2 WHEAT CLEANERS -  
1 CORN CLEANER -  
6 BOLT. FEELS -  
1 CYCLONE DUST COLLECTOR -  
1 POWDER - 1 SIFTER.

**AYER & LORD-TIE CO.**

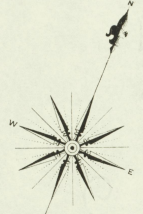
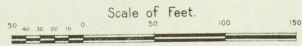
**BURNSIDE ROLLER MILL.**  
J.D. VAUGHN, OWNER.

**CHICAGO VENEER CO.**

**BURNSIDE EXCELSIOR CO.**

**C.B. & C.R. RAILROAD CO.**  
SAW MILL (CLOSED)

**BURNSIDE EXCELSIOR CO.**  
EXCELSIOR MILL.  
Main SLOTTING MACHINES -  
POWER STEAM - HEAT STOVE IN  
GRINDING ROOM - LIGHTS, ELEC -  
FUEL COILS - HYDRANTS & HOSE  
12 SHOW - FIRE PAILS & BLS.  
BURNING.



Map Division  
31 JUL 1905  
Library of Congress

CARL BUNKER  
(PLANNED)

MAY 1908  
BURNSIDE  
KY.

