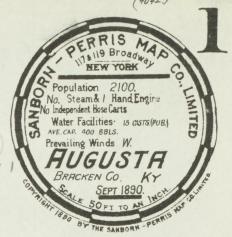
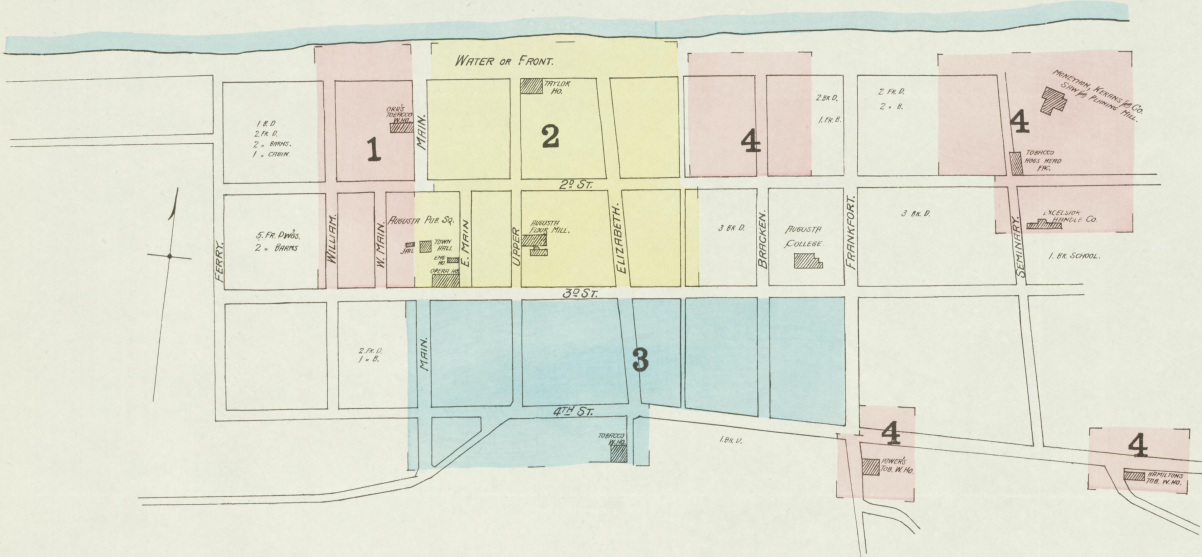


INDEX.

STREETS.		SPECIALS.		SPECIALS.	
B	Main, W.	A	Augusta Carriage Works	M	Methodist Episcopal Church
Bracken	Front to Second	B	Opera House	O	Moneyhon, Kerans & Co. Saw & Pfg Mill
"	Third to Fourth	C	Byer, M., Tobacco Warehouse	P	Orr's Tobacco Warehouse
E	Elizabeth	C	Catholic Church	Power, J. A., Tobacco Warehouse	
"	Front to Third	Christian Church	" S. T., "	Presbyterian Church	
"	S. of "	City Hall	Citizens' Coal Co.	Second Presbyterian South Church	
F	Fourth	Excelsior Handle Co.	Ginn, B. F., Coal Yard	Stroube, S. J., Flour Mill	
"	Main to Frankfort	G	Hamilton, S. & P., Tobacco & Grain W. H.	Taylor, C. W., Grain & Tobacco W. H.	
"	E. of "	H	T. S., Warehouse	Hotel	
Frankfort	Third to Fourth	U	Water	Van Dyke, T. R., Wagon Shop	
"	William to Main	W	William, S. & P., Tobacco & Grain W. H.	Winter, G. W., Tobacco Warehouse	
"	Main to E. of Elizabeth				
"	near Bracken				
"	near Seminary				
"	Front to Third				
"	S. of "				
M	Main, East Side				
"	Front to Second				
"	West "				
"	S. of Third				
"	E.				

* Indicates only one side of Street shown.

Ohio River.



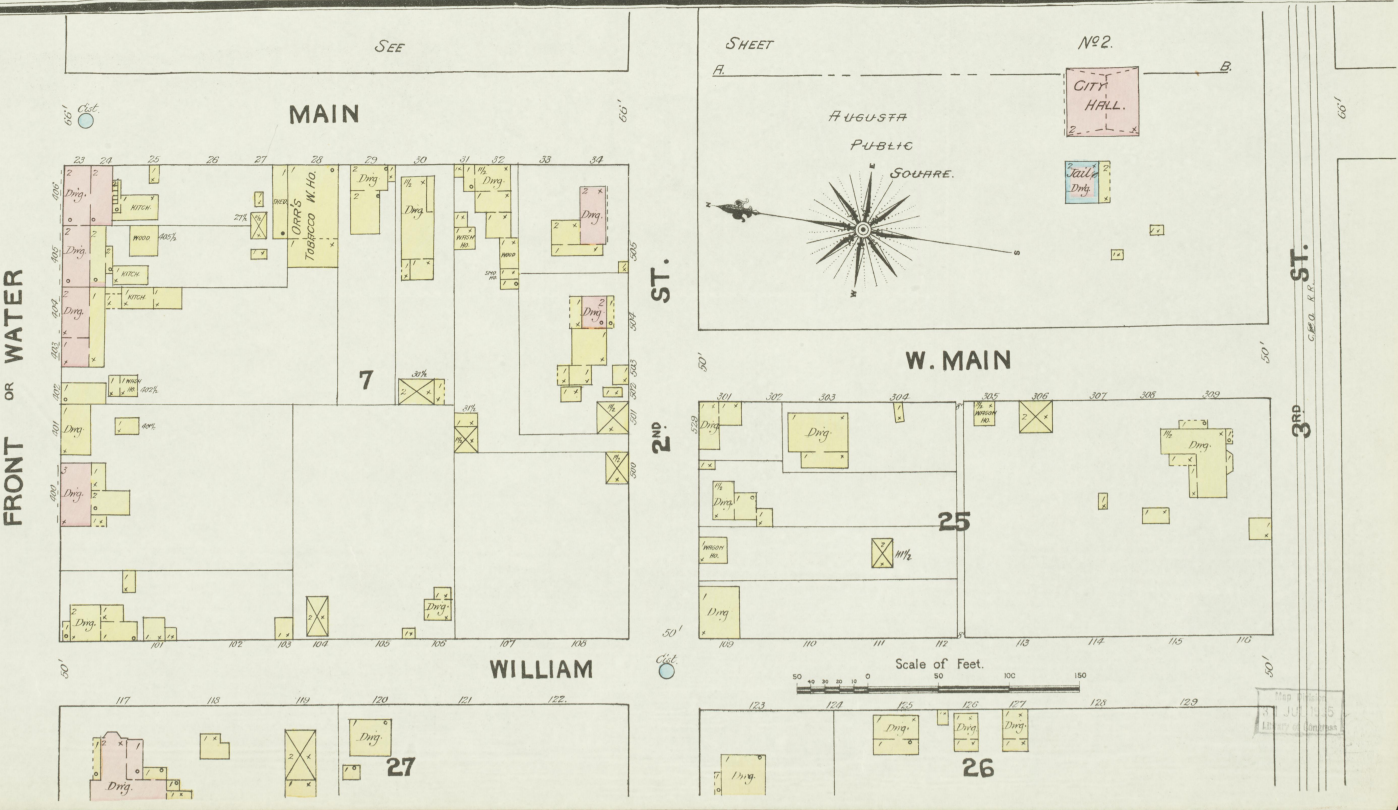
35599

Certificate

WE THE UNDERSIGNED HAVE EXAMINED THE FOREGOING MAP OF THE TOWN OF AUGUSTA, KY. AND FIND THE SAME TO BE CORRECT AND ACCURATELY DRAWN AND PRINTED AND THAT THE INFORMATION THEREON IS TRUE AND CORRECT AND THAT WE ARE WILLING TO BE RESPONSIBLE FOR THE SAME.

R. L. Armstrong
L. P. Knuedler
D. W. Haslam
O. J. Gray

KEY	
1/4" = 10'	FINE WALL 6 IN. AS BUILT
1/8" = 5'	CONCRETE WALL
1/16" = 2 1/2'	BRICK WALL
1/32" = 1 1/4'	FRAME PARTITION
1/64" = 7/8"	OPENING & NON DOOR
1/128" = 3/4"	WOODWORK - MIDDLES
1/256" = 3/8"	STABLE
1/512" = 3/16"	WINDOW IN 1 ST STORY
1/1024" = 3/32"	11/16" ELEV.
1/2048" = 3/64"	2 1/4" x 1 1/4"
1/4096" = 3/128"	BLOCKS COLORED YELLOW ARE FRAME
1/8192" = 3/256"	RED = BRICK
1/16384" = 3/512"	BLUE = STONE
1/32768" = 3/1024"	BROWN = IRON
1/65536" = 3/2048"	BROWN = ACRORE
1/131072" = 3/4096"	HARBOR OPENING - SPECIALS
1/262144" = 3/8192"	INDICATE RELATIVE HEIGHTS
1/524288" = 3/16384"	ARBITRARY STREET NOT AS ACTUAL
1/1048576" = 3/32768"	CONSECUTIVE
1/2097152" = 3/65536"	ARBITRARY
1/4194304" = 3/131072"	BROKEN LINE NEAR BUSH-WOOD CORNER
1/8388608" = 3/262144"	SOLID = METAL



O h i o

R i v e r

SEE SHEET No. 4

SEP 1890
AUGUSTA
KY.

2

FRONT OR WATER

ELIZABETH

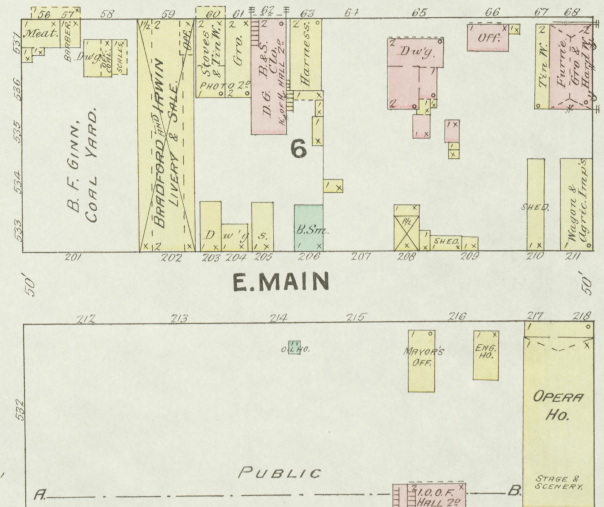
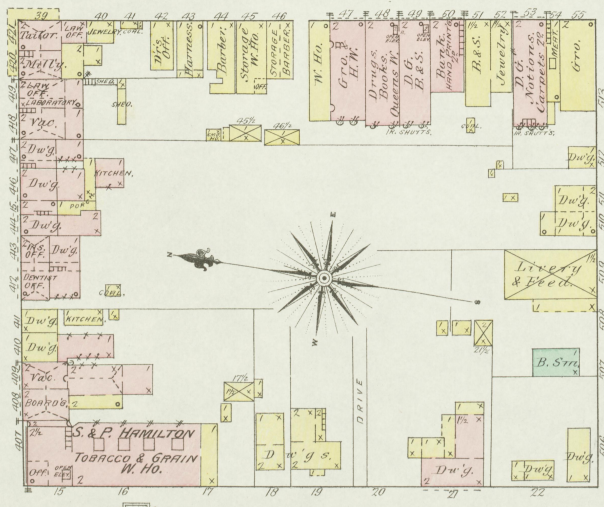
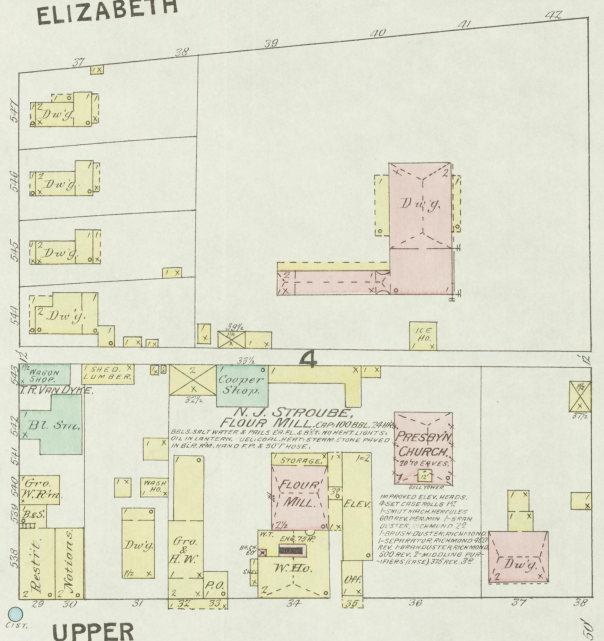
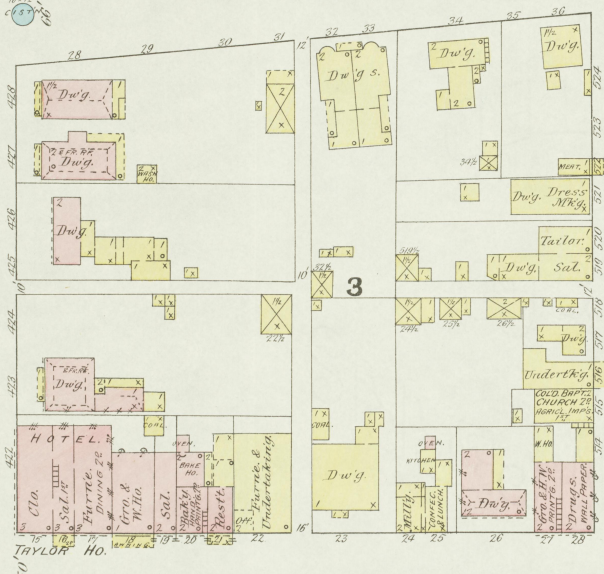
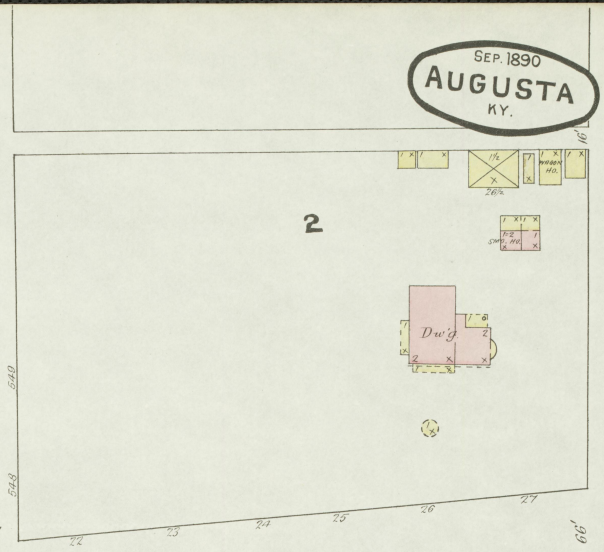
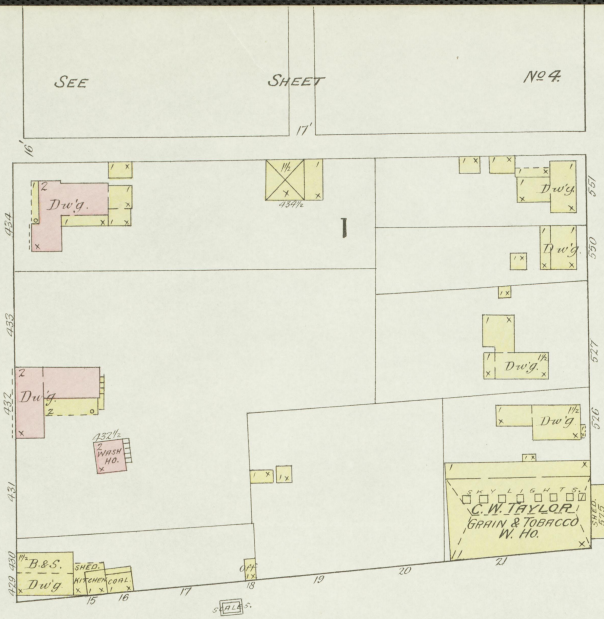
2ND ST.

3RD ST.

UPPER

E. MAIN

PUBLIC SQUARE.



MAIN

Scale of Feet.

SEE

SHEET

No. 1.

No. 1.

SHEET

SEE

SEE

SHEET

182

3RD ST. C. & O. R. R.

3

SEP. 1890
AUGUSTA
KY.

MAIN

10

UPPER

9

ELIZABETH

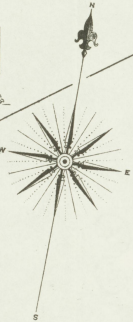
SEE BELOW

4TH ST.

MILL

12

BROOKVILLE TURNPIKE



11

CHRISTIAN CHURCH
1808
1770 ERECTED

J. A. POWERS
TOBAC. W. H. B.
NO HEAT
NO ELEVATOR

Alley
NO EXPOSURE

3RD ST. C. & O. R. R.

ELIZABETH

8

BRACKEN

28

FRANKFORT

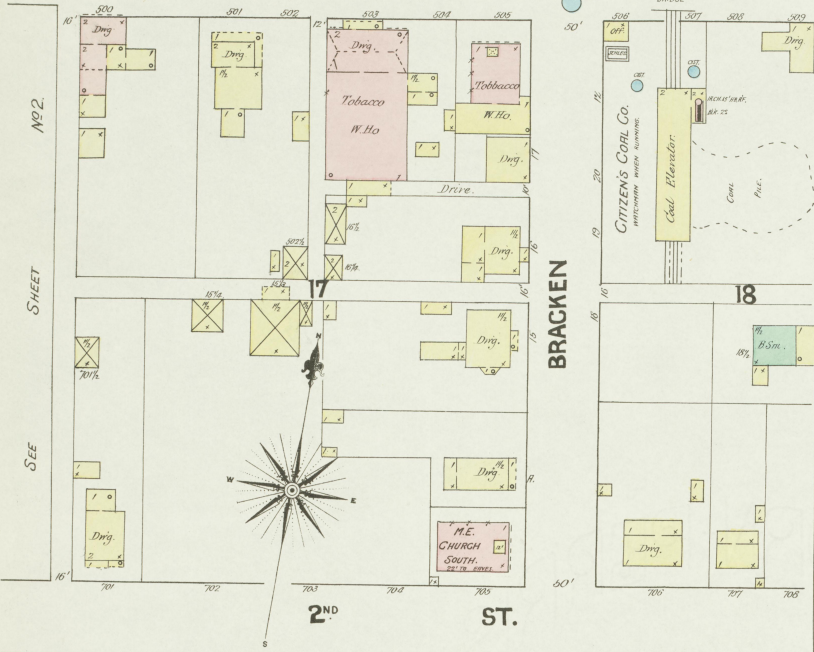
R. C. CHURCH

Original Plat. 11.5
List of Owners

Scale of Feet.

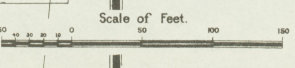
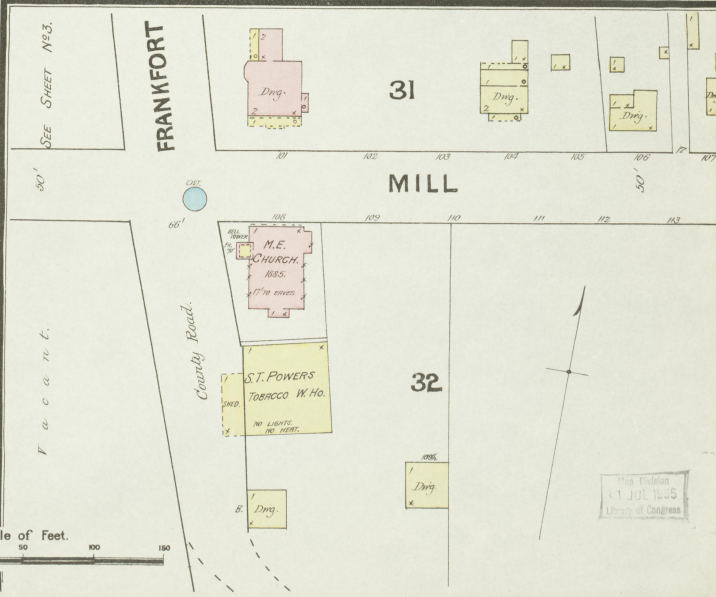
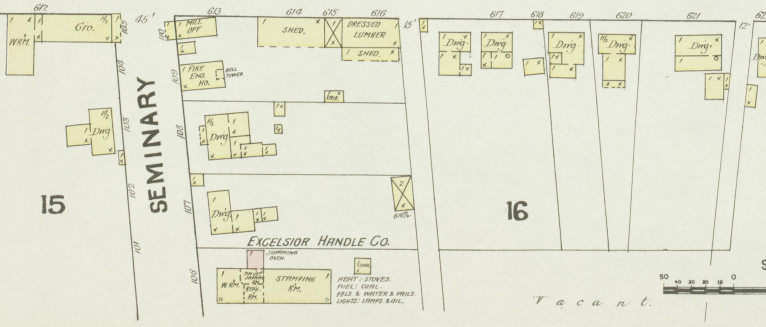
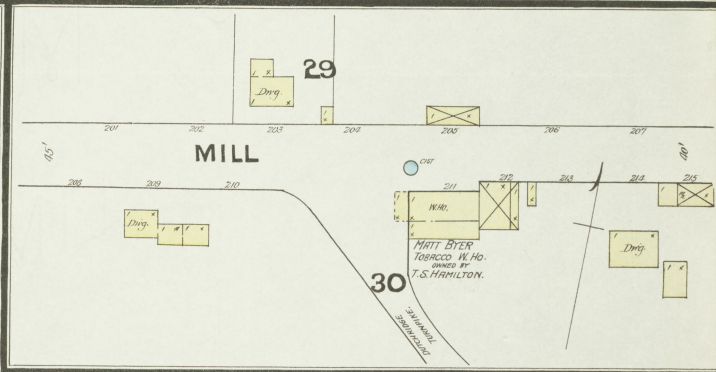
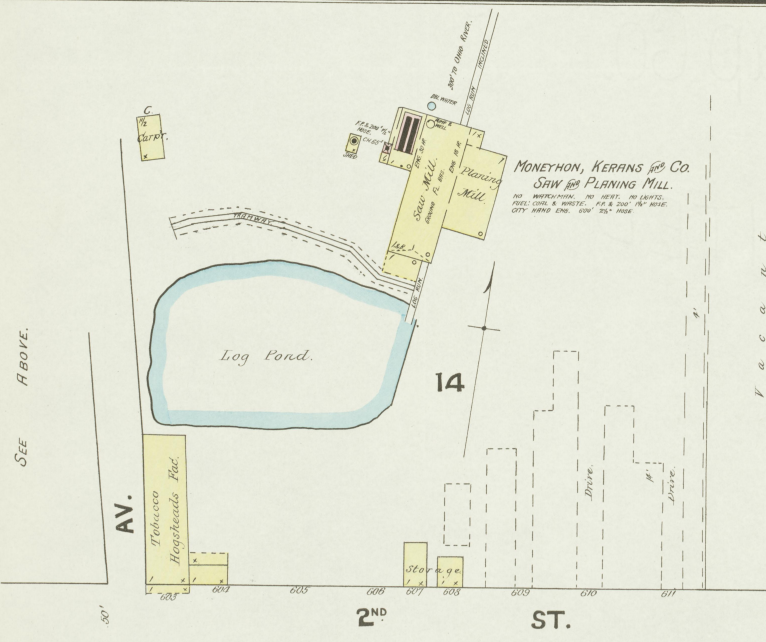
4TH ST.

FRONT OR WATER



Ohio River.

FRONT OR WATER



This Edition
 JULY 1895
 Library of Congress