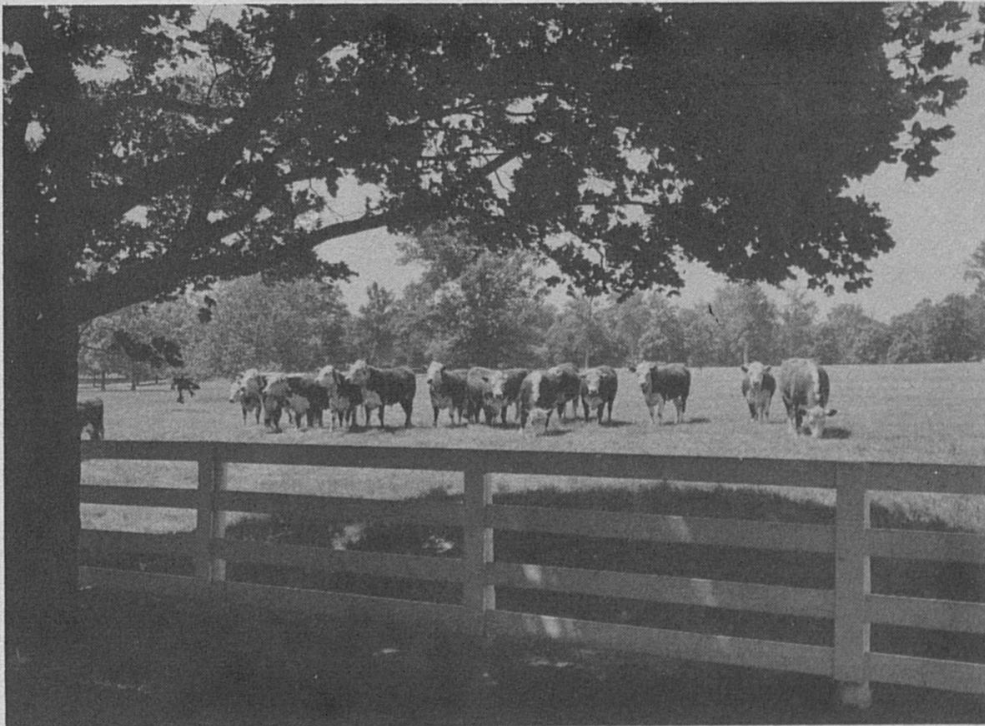


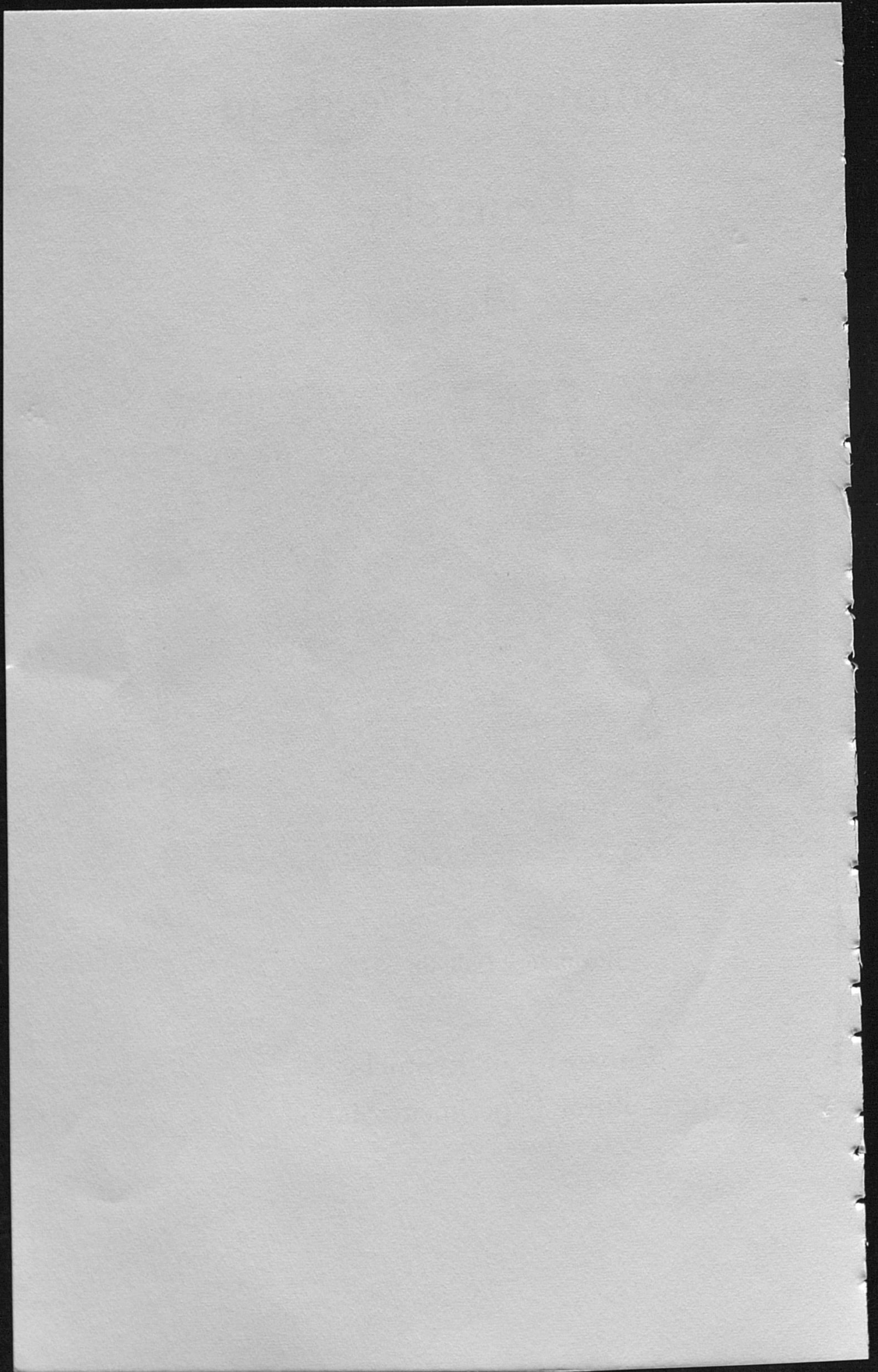
Commercial Feeds in Kentucky

1968



Regulatory Bulletin 202

University of Kentucky
Agricultural Experiment Station
Lexington



FEEED SECTION
DIVISION OF REGULATORY SERVICES
KENTUCKY AGRICULTURAL EXPERIMENT STATION

Bruce Poundstone, Director
Dr. Paul R. Caudill, Assistant Director
Glynn E. Williamson, Feed Registrar
*J.M. Fernandez, Auditor

FIELD INSPECTION

Wilson M. Routt
Joe B. Brown
Elmer Cottongim
Ben W. Cox

Claude E. Hensley
Neville Hulette
Wallace L. King

Ellis Hugh Ray
William K. Robertson
Eugene G. Vanderpool
Samuel D. Whitehead

LABORATORY

Valva Midkiff
John T. Adair
Barbara Anderson
Elizabeth Brown
Judy Dombroski

John Ellis
Linda Fritz
Norma Holbrook

**Dewey H. Newman, Jr.
Robert N. Price
J. A. Shrader
Carolyn Sue Witt
***Leokadia Woloszyn

CONTENTS

Page

Introduction and Feed Monitoring Program.....	4
Estimated Tonnage of Feed Sold in 1968.....	5
Companies with Feed Registered in 1968.....	6
Average Composition of More Common Feedstuffs.....	12
Miscellaneous Samples Analyzed in 1947-68.....	14
Urea in Feeds.....	15
Changes in Product Names.....	16
The Medicated Feed Label.....	17
Table 1 - Report of Official Samples Analyzed 1968.....	19
Table 2 - Samples Classified as "Not Passed".....	25

This bulletin compiled and prepared by Bruce Poundstone and Glynn E. Williamson
Analytical data by Laboratory Staff

- * Resigned July 16, 1968
** Resigned April 12, 1968
*** Resigned April 30, 1968

INTRODUCTION

This bulletin contains the results of inspection and analysis of commercial feeds sold in Kentucky during the calendar year of 1968, and other information helpful to those interested in this field.

During 1968, 2,769 official samples of feed were secured by inspectors. 2,583 or 93% of these passed inspection and analysis satisfactorily. During 1967, 3,091 official samples were secured and 2,826 or 91% of these were passed. The total estimated tonnage of commercial feeds distributed in Kentucky for 1968 was 627,500 tons. In 1967, the tonnage was 602,072 tons.

The feed control section of the Division of Regulatory Services handles all matters concerning feed inspection, registration, analysis, and compliance.

FEED MONITORING PROGRAM

All feeds sold in Kentucky must be registered with the Feed Control Section. Registration forms are available upon request. There is no charge for registration. Once registered, it continues in effect until re-registration is called for. Most companies keep all registrations current by cancelling feeds no longer manufactured and by adding new feeds. Inspectors are constantly in the field checking with dealers to assist them with their records and feed manufacturing practices. Inspectors examine labeling and sample feed. Samples are analyzed in the chemical laboratory. Samples that do not come up to the guaranteed analysis are listed in an annual feed bulletin published by the Section. Those companies having seriously deficient feed samples are advised by letter regarding the deficiency and on occasions when the situation is serious, stop sale notices may be issued until the deficiency can be corrected. Feed inspection and analysis is becoming more and more complicated. The Feed Control Program protects the feeder by requiring proper labeling, adequate purpose statements, precautions and warnings where necessary and checking contents of feeds with the guarantees. Manufacturers and dealers are thus enabled to do business on an orderly and equitable basis.

ESTIMATED TONNAGE OF SALES BY CLASS OF FEED,
KENTUCKY, 1968

<u>Mixed Feed</u>	<u>Tons</u>
Calf Feed	7,335
Cattle Feed	27,775
Dairy Feed	119,977
Dog & Cat Feed	26,193
Horse & Mule Feed	19,344
Mineral Feed	7,893
Pig & Hog Feed	141,965
Poultry Mashs	114,632
Rabbit Feed	2,184
Scratch Feed	5,513
Sheep Feed	490
Stock Feed	2,359
Turkey Mashs	2,076
Miscellaneous Mixed Feed	<u>14,164</u>
TOTAL MIXED FEED	<u><u>491,900</u></u>
<u>Straight Materials</u>	
Alfalfa Products	4,887
Animal Products	3,869
Barley Products	64
Brewers Products	695
Corn Products	29,735
Cottonseed Products	4,644
Distillers Products	6,865
Linseed & Flax Products	239
Molasses	28,204
Oat Products	2,284
Soybean Products	24,323
Wheat Products	22,260
Miscellaneous Products	<u>7,531</u>
TOTAL STRAIGHT MATERIAL	<u><u>135,600</u></u>
GRAND TOTAL	627,500

COMPANIES HAVING FEED REGISTERED, 1968

Acme-Evans Co., Inc., Indianapolis, In. 46222
 Adams Packing Assn., Inc., Auburndale, Fl. 33823
 Ade Farm Chemical Co., Inc., Tiskilwa, Il. 61368
 Agricultural Supply Co., Inc., Owensboro, Ky. 42301
 Ag Services, Bowling Green, Ky. 42101
 Agway, Inc., Country Best Feeds, Ithaca, N.Y. 14851
 Albany Mills, Albany, Ky. 42602
 Albers Milling Co., Los Angeles, Ca. 90036
 Allegre Milling Co., Allegre, Ky. 42203
 Allen County Seed Ser., Scottsville, Ky. 42164
 Allen Products Co. Inc., Allentown, Pa. 18104
 Allen Products Co. Inc., Crete, Nb. 68333
 Allied Chemical Corp., Hopewell, Va. 23860
 Allied Chemical Corp., Omaha, Nb. 68124
 Allied Foods Inc., Atlanta, Ga. 30318
 Allied Mills, Inc., Libertyville, Il. 60048
 Allison Mills, Inc., Little Rock, Ar. 72204
 Alver Brothers Co., Milford, Il. 60953
 American Crystal Sugar Co., Denver, Co. 80202
 American Cyanamid Co., Princeton, N.J. 08540
 American Kennel Foods, Russellville, Ky. 42276
 American Salt Corp., Des Plaines, Il. 60018
 Amory Cotton Oil Co., Inc., Amory, Ms. 38821
 Anderson Co. Farm Service, Lawrenceburg, Ky. 40342
 Anderson & Spilman, Danville, Ky. 40422
 Anglo Sweet Feed Mill, Inc., Owensboro, Ky. 42301
 Anheuser-Busch, Inc., St. Louis, Mo. 63118
 Animal Nutrition, Inc., Belleville, Il. 62223
 Anvil Mineral Prod. Corp., Bay Springs, Ms. 39422
 Apex Feed & Supply, Inc., Marietta, Oh. 45750
 Archer Daniels Midland Co., Minneapolis, Mn. 55440
 Arkansas Grain Corp., Stuttgart, Ar. 72160
 Arkansas Rice Growers Coop., Stuttgart, Ar. 72160
 Armour Creameries, Springfield, Ky. 40069
 Armour Grocery Products Co., Chicago, Il. 60606
 Armour & Co., Chicago, Il. 60609
 Ashland Milling Co., Ashland, Ky. 41101
 Astor Products, Inc., Jacksonville, Fl. 32203
 The Attala Co., Kisciusko, Ms. 39090
 Aubrey Feed Mills, Inc., Louisville, Ky. 40204
 Auburn Mills, Inc., Auburn, Ky. 42206
 Aylor & Meyer Co., Aurora, In. 47001
 Bagdad Roller Mills, Bagdad, Ky. 40003
 Barton Distilling Co., Bardstown, Ky. 40004
 Baughman Milling Co., Stanford, Ky. 40480
 Bay State Milling Co., Leavenworth, Ks. 66048
 Bay State Milling Co., Winona, Mn. 55987
 James B. Beam Distilling Co., Clermont, Ky. 40110
 B. A. Bernard & Co., Inc., Camden, N.J. 08104
 Best Feeds & Farm Supplies, Oakdale, Pa. 15071
 Bi-County Farm Bureau Co-op., Florence, Ky. 41042
 Big Four Feed & Implement Co., Scottsville, Ky. 42164
 Big Star Products Co., Atlanta, Ga. 30302
 Birmingham Milling Company, Benton, Ky. 42025
 Bisset Farm Supply, Harrodsburg, Ky. 40330
 Blenda Life, Inc., Green Isle, Mn. 55338
 Blue Barn Dog Food Co., New Albany, In. 47150
 Blue River Feed Mills, Inc., Edinburg, In. 46124
 Bobb Brothers, Leesburg, Oh. 45135
 Boone Co. Farm Supply, Walton, Ky. 41094
 Boones Feed Store, Stanford, Ky. 40484
 Boone Valley Coop. Proc. Assn., Eagle Grove, Ia. 50533
 Borden Chemical Co., Norfolk, Va. 23501
 Boswell Company, Atlanta, Georgia 30305
 Bremco Mills, New Bremen, Oh. 45869
 Brode Corporation, Memphis, Tn. 38101
 Browder Milling Co., Inc., Fulton, Ky. 42041
 Brown-Forman Distillers Corp., Louisville, Ky. 40201
 Brown Molasses Co., Inc., Bremen, Ind. 46506
 Bryant & Crume Milling Co., Caneyville, Ky. 42721
 Buckeye Cellulose Corp., Cincinnati, Oh. 45201
 Buckeye Cellulose Corp., Memphis, Tn. 38108
 Buhler Mills, Inc., Buhler, Ks. 67522
 Burrows Feed Mill, Pendleton, Ky. 40055
 Bush Brothers & Co., Clinton, Tn. 37716
 A. C. Butts & Sons, Fulton, Ky. 42041
 Cadiz Milling Company, Cadiz, Ky. 42211
 Calhoun & Wathen, Inc., Madisonville, Ky. 42431
 Campbellsville Milling Co., Campbellsville, Ky. 42718
 Caneyville Roller Mill Co., Caneyville, Ky. 42721
 Cardinal Food Products, Inc., St. Louis, Mo. 63103
 Carey Salt Company, Hutchinson, Ks. 67501
 Cargill, Inc., Cincinnati, Oh. 45204
 Cargill, Inc., Minneapolis, Mn. 55402
 Carnation Co., Los Angeles, Ca. 90036
 Carroll Co. Farm Bureau Coop., Carrollton, Ky. 41008
 Central Soya Co., Inc., Ft. Wayne, In. 46802
 Central Soya of Clinton, Inc., Clinton, Ky. 42031
 Central Soya of Kentucky, Louisville, Ky. 40204
 Chef Pet Foods, Inc., Delavan, Wi. 53115
 Citizens Milling Co., Somerset, Ky. 42501
 City Roller Mills, Vevay, In. 47043
 Clarkson Feed Store, Clarkson, Ky. 42726
 Cleveland Milling Company, Cleveland, Tn. 37311
 Climax Mills, Shelbyville, Ky. 40065
 Clinton Corn Processing Co., Clinton, Ia. 52733
 H. C. Cole Milling Co., Chester, Il. 62233
 Colonial Stores, Inc., Atlanta, Ga. 30302
 Columbian Hog & Cattle Powder, Kansas City, Mo. 64129
 Comet Rice Mills, Houston, Texas 77001
 Community Milling Company, Irvington, Ky. 40146
 Community Feed Mill, Belton, Ky. 42324
 Consolidated Mills, Inc., Blissfield, Mi. 49228
 Corn Products Co., Englewood Cliffs, N.J. 07632
 Cosby-Hodges Milling Co., Birmingham, Al. 35201
 Craft Feed & Grain, Catlettsburg, Ky. 41129
 Crafton-Duncan, Inc., Henderson, Ky. 42420
 Crescent Roller Mills, Inc., Taylorsville, Ky. 40071
 Crestwood Farmers Supply Center, Crestwood, Ky. 40014
 Cumberland Milling Co., Clarksville, Tn. 37040
 Custom Feed Mills, Morganfield, Ky. 42437

- Darling & Co., Chicago, Il. 60609
Darling & Co., Cincinnati, Oh. 45215
Darling & Co., Reading, Oh. 45215
Dawes Laboratories, Inc., Chicago, Il. 60632
Dearborn Mills, Aurora, In. 47001
Decatur Cotton Oil Co., Decatur, Al. 35601
Delta Oil Mill, Inc., Jonestown, Ms. 38639
Delta Rice, Inc., Hollandale, Ms. 38748
Diamond Crystal Salt Co., St. Clair, Mi. 48079
Diamond Laboratories, Des Moines, Ia. 50303
Diamond V. Mills, Inc., Cedar Rapids, Ia. 52407
Diamond Shamrock Chemical Co., Newark, N.J. 07101
Dicken Mill, Mentor, Ky. 41060
Dixie Mills, Co., E. St. Louis, Il. 62202
Dixie Portland Flour Mills, Arkansas City, Ks. 67005
Dixie Portland Flour Mills, Chattanooga, Tn. 37401
Dixie Portland Flour Mills, Memphis, Tn. 38101
Doane Feed Products Co., Joplin, Mo. 64801
Duncan-McFarland Farm Service, Lawrenceburg, Ky. 40342
Dunnington Milling Co., Monticello, Ky. 42633
E. I. Dupont DeNemours & Co., Wilmington, De. 19898
Emge Packing Co., Inc., Ft. Branch, Tn. 47533
F. L. Emmert Co., Inc., Cincinnati, Oh. 45214
John W. Eshelman & Sons, Lancaster, Pa. 17604
Evans Milling Co., Indianapolis, In. 46206
John Ewing Co., LaSalle, Co. 80645
Fabro, Inc., Atlanta, Georgia 30318
Fabro of Georgia, Inc., Atlanta, Ga. 30318
Falstaff Brewing Corp., St. Louis, Mo. 63110
Famous Feed Mills, Nashville, Tn. 37201
Farm Bureau Milling Co., Hammond, In. 46320
Farm Service Center, Inc., Beaver Dam, Ky. 42320
Farm Services, Inc., Glasgow, Ky. 42141
Farmers Elevator Co. Feed Dept., Franklin, Ky. 42134
Farmers Feed Mill, Lexington, Ky. 40508
Farmers Feed Store, Central City, Ky. 42330
Farmers Friend Mineral Co., Napoleon, Oh. 43545
Farmers & Ginners Cotton Oil Co., Birmingham, Al. 35201
Farmers & Merchants Milling, Brooksville, Ky. 41004
Farmers Milling Co., Somerset, Ky. 42501
Farmers Supply of Ohio County, Inc., Beaver Dam, Ky. 42320
Farmers Supply Co., Springfield, Ky. 40069
Farmers Supply & Produce Co., Monticello, Ky. 42633
Farmers Tankage Co., Henderson, Ky. 42420
Farmington Sweet Feed Mill, Farmington, Ky. 42040
Farmland Industries, Inc., Kansas City, Mo. 64116
J. H. Fedders, Inc., Covington, Ky. 41014
Feeders Feed Service, Owenton, Ky. 40359
Feed Service Corp., Crete, Nb. 68333
Ferguson Brothers Feed Mill, Albany, Ky. 42402
Ferma-Gro Corp., Storm Lake, Ia. 50588
Ferneau Grain Co., Cincinnati, Oh. 45227
Field Packing Co., Inc., Owensboro, Ky. 42301
Finch Packing, N. Vincennes, In. 47591
Fischer Packing Co., Louisville, Ky. 40201
Fish Meal Co., Morgan City, La. 70380
Fleischmann Distilling Corp., Owensboro, Ky. 42301
Fleming Laboratories, Inc., Charlotte, N.C. 28208
Flour Mills of America, Inc., Kansas City, Mo. 64142
Folsomdale Milling Co., Boaz, Ky. 42027
Foremost Dairies, Inc., San Francisco, Ca. 94111
Fort Negley Mills, Nashville, Tn. 37203
Fortune Feed Mills, Lebanon, Tn. 37087
40/to/One Inc., Chattanooga, Tn. 67404
Poster Canning, Inc., Napoleon, Oh. 43545
Francis Wholesale Co., Prestonburg, Ky. 41653
R. T. French Manufacturers, Rochester, N.Y. 14609
Froedtert Malt Corp., Milwaukee, Wi. 53215
Frosty Morn Meats, Clarksville, Tn. 37041
Henry Fruechtenicht Co., Inc., Louisville, Ky. 40202
Fruen Milling Co., Minneapolis, Mn. 55403
Fuhrer-Ford Mill Co., Inc., Mt. Vernon, In. 47620
Gallatin Co. Farm Supply, Warsaw, Ky. 41095
Gamaliel Feed & Farm Supply, Gamaliel, Ky. 42140
Garrard Mills, Lancaster, Ky. 40444
J. I. Gates Milling Co., Columbus, Oh. 43222
General Distributing Co., E. St. Louis, Il. 62201
General Foods Corp. Corn Mill, Kankakee, Il. 60901
General Foods Corp. Gaines Div., White Plains, N.Y. 10605
General Mills, Inc., Minneapolis, Mn. 55440
General Packing Co., Waynesville, Oh. 45068
Germantown Milling Co., Germantown, Ky. 41044
Gethsemani Farms, Trappist, Ky. 40073
Gilster Milling Co., Chester, Il. 62233
Glenmore Distilleries Co., Louisville, Ky. 40202
Glenmore Distilleries Co., Owensboro, Ky. 42301
Gold Seal Products Co., Birmingham, Al. 35203
Goldenrod Oil Meal Sales Co., Memphis, Tn. 38101
Gooch Feed Mill Co., Lincoln, Nb. 68501
Good-Life Chemicals, Inc., Effingham, Il. 62401
W. R. Grace & Co., St. Louis, Mo. 63105
W. R. Grace Agri. Products Div., Atlantic, Ia. 50022
Grain Processing Corp., Muscatine, Ia. 52761
Grant Co. Farm Supply, Dry Ridge, Ky. 41035
Grayson Milling Co., Grayson, Ky. 41143
The Great A & P Tea Co., Inc., Brockport, N.Y. 14420
Great Lakes Pet Food Co., Hammond, In. 43625
The Great Western Foods Co., Knoxville, Tn. 37901
Green County Milling Co., Greensburg, Ky. 42743
Green Valley Farm Supply Inc., Island, Ky. 42350
Griffin Industries, Butler, Ky. 41006
Griffin Packing Co., Danville, Ky. 40422
Gulf Oil Co., Kansas City, Mo. 64105
Gulf Oil Corp., Chem. Dept., Sturgis, Ky. 42459

- Guthrie Farm Service, Harrodsburg, Ky. 40330
 Guthrie Feed Mill, Guthrie, Ky. 42234
 Earl Hale & Son, Jasper, Ohio 45642
 Hales & Hunter Co., Chicago, Il. 60606
 Hardin County Milling Co., Elizabethtown, Ky. 42701
 Hardin Feed Mill, Hardin, Ky. 42048
 Hardy Brothers Mills, Walton, Ky. 41094
 Hardy Salt Co., St. Louis, Mo. 63166
 Harlan Farmers Supply Co., Harlan, Ky. 40831
 Harpeth Mills, Nashville, Tn. 37203
 Hartz Mountain Products, N.Y., N.Y. 10003
 Harvest Brand, Inc., Pittsburg, Ks. 66762
 T. J. Haycraft Sales & Service, Leitchfield, Ky. 42754
 Haydon Mill & Grain Co., Springfield, Ky. 40069
 Haynes Milling Co., Inc., Portland, In. 47371
 Haynie Products Inc., Baltimore, Md. 21230
 Heaven Hill Distilleries, Bardstown, Ky. 40004
 Dr. Heinz Co., Bloomingburg, Oh. 43106
 Dr. Heinz Co., Washington Court House, Oh. 43160
 Henderson Feed & Commission, Henderson, Ky. 42420
 Henry County Feeders Supply, Eminence, Ky. 40019
 Herning's Mill, Hazel, Ky. 42049
 Burch Hester Feed Store, Hustonville, Ky. 40437
 Hi-Acres Concentrate, Inc., Orlando, Fl. 32804
 Hi-Life Packing Co., Chicago, Il. 60603
 Hi-Vi Dog Food Co., Rush Springs, Ok. 73082
 Hickman Co. Feed Mill, Clinton, Ky. 42031
 Hill's Div. Riviana Foods Inc., Topeka, Ks. 66601
 Frank Hinton & Son, Plummers Landing, Ky. 41089
 Hobbs Feed & Supply, Fancy Farm, Ky. 42039
 Hodgenville Roller Mills, Hodgenville, Ky. 42748
 Holly Sugar Corp., Colorado Springs, Co. 80901
 Home Milling Co., Inc., Greenville, Ky. 42345
 Honegger's & Co., Inc., Fairbury, Il. 61739
 Booker Chemical Co., Jeffersonville, In. 47130
 Hoosier Mineral Feed Co., Greenwood, In. 46142
 Hopkinsville Milling Co., Hopkinsville, Ky. 42240
 Horlicks Corp., Racine, Wi. 53404
 Howdy Distributing Co., Williamstown, W.Va. 26187
 Hubinger Co., Keokuk, Ia. 52632
 Hudsons Farm Service, Franklin, Ky. 42134
 Huff & Puff Pet Foods, Inc., Reedville, Va. 22539
 Humphreys Mills, Memphis, Tn. 38102
 Hunter Milling Co., Wellington, Ks. 67152
 Hygrade Food Products Corp., Detroit, Mi. 48214
 The Hyland Company, Ashland, Ky. 41101
 Igleheart Bros., Evansville, In. 47707
 Illinois Cereal Mills, Inc., Paris, Il. 61944
 J.F. Imbs Milling Co., St. Louis, Mo. 63110
 Indiana Farm Bureau Coop. Assn., Indianapolis, In. 46204
 Industrial Molasses Corp., Leonia, N.J. 07605
 International Mineral & Chemical Corp., Skokie, Il. 60077
 International Milling Co., Minneapolis, Mn. 55415
 International Salt Co., Inc., Clarks Summit, Pa. 18411
 Jersee Security Co., Minneapolis, Mn. 55415
 Jewel Companies, Barrington, Il. 60010
 I. S. Joseph Co., Inc., Minneapolis, Mn. 55415
 K & K Manufacturing Inc., Rogers, Mn. 55374
 E. Kahns' Sons Co., Cincinnati, Oh. 45225
 Kal Kan Foods, Inc., Los Angeles, Ca. 90058
 Kaler Milling Co., Symsonia, Ky. 42082
 Kane Molasses Laboratories, Mt. Pulaski, Il. 62548
 Keco Milling Co., McKenzie, Tn. 38201
 Keller Hay & Grain Co., Newport, Ky. 41072
 Kentucky Animal By-Products, Russellville, Ky. 42276
 Kentucky By-Products Corp., Louisville, Ky. 40211
 Kentucky Chemical Industries, Cincinnati, Oh. 45232
 Keynes Brothers, Logan, Oh. 43138
 Kimbell-Diamond Milling Co., Ft. Worth, Tx. 76101
 Kingston Farmers Exchange, Inc., Kingston, Oh. 45646
 Klarer of Kentucky, Inc., Louisville, Ky. 40201
 Knauf & Tesch Co., Chilton, Wi. 53014
 H. C. Knoke & Co., Chicago, Il. 60650
 Kraft Foods, Chicago, Il. 60612
 Kroger Co., Cincinnati, Oh. 45202
 Kuder Pulp Citrus Sales Co., Lake Alfred, Fl. 33850
 La Crosse Milling Co., Cochrane, Wi. 54622
 Lake Co. Oil Mill, Tiptonville, Tn. 38079
 Land O'Lakes Creameries, Inc., Minneapolis, Mn. 55413
 Edmond J. Lang, New Rochelle, N. Y. 10802
 Lark, Boone, Iowa 50036
 Lauhoff Grain Co., Danville, Il. 61832
 Harry L. Laws & Co., Inc., New Orleans, La. 70130
 Layne Calcium Corp., Hollandale, Fl. 33009
 LeGear Laboratories, Inc., St. Louis, Mo. 63116
 Lewisburg Roller Mills, Lewisburg, Ky. 42256
 Lilly Brothers Seed Co., Hopkinsville, Ky. 42240
 Liv-A-Snaps, Inc., St. Paul, Mn. 55105
 Livestock Industries, Inc., Park City, Ky. 42160
 Loft-Dahlgren, Inc., Crookston, Mn. 56716
 Loncala Phosphate Co., High Springs, Fl. 32643
 Louisa Supply Co., Inc., Louisa, Ky. 41230
 Lowes Feed & Hatchery, Bowling Green, Ky. 42101
 Lowes Pellets & Grain, Inc., Greensburg, In. 47240
 Lubbock Cotton Oil Mill Co., Lubbock, Tx. 79408
 Lynn Grove Milling Co., Lynn Grove, Ky. 42062
 M.F.A. Grain Division, Mexico, Mo. 65265
 Magic Feed Mills, Inc., Paoli, In. 47454
 Manard Molasses Company, New Orleans, La. 70130
 Manko Co., Inc., Ocala, Fl. 32670
 Marblehead Lime Co., Chicago, Il. 60606
 Marion Feed Mills, Marion, Ky. 42064
 Martin Sales Co., Toledo, Oh. 43606
 Masonite Corp., Chicago, Il. 60606
 Mavar Shrimp & Oyster Co., Biloxi, Ms. 39530
 Mayes-Helm & Coyle, Perryville, Ky. 40468
 Mayfield Milling Co., Inc., Mayfield, Ky. 42066
 Mayfield Sweet Feed Mill, Mayfield, Ky. 42066

- Mayflower Mills, Fort Wayne, In. 46801
 McCauley Bros. Seed Co., Versailles, Ky. 40383
 J. A. McDonald & Sons, Rogersville, Tn. 37857
 McGahan & Co., Paintsville, Ky. 41240
 McInnis Co., Pulaski, Tn. 38478
 McKnight-Keaton Grocery Co., Sikeston, Mo. 63801
 McRedmond Brothers, Nashville, Tn. 37210
 McWhorter Brothers, Albany, Ky. 42602
 Meadows Feed & Bldg. Supply, Clay City, Ky. 40312
 Medley Distilling Co., Owensboro, Ky. 42301
 Mennel Milling Co., Fostoria, Ohio 44830
 Metzger Brothers, Paducah, Ky. 42001
 Michigan Salt Company, St. Louis, Mi. 48880
 Micro-Lite, Inc., Emporia, Ks. 66801
 Mid-South Feeds, Inc., Nashville, Tn. 57209
 Mid-South Milling Co., Memphis, Tn. 38106
 Mid-State Molasses Co., Franklin, Tn. 37046
 Middlesboro Milling Co., Middlesboro, Ky. 40965
 Midget Mills, Somerset, Ky. 42501
 Midwest Feeds Co., Cincinnati, Oh. 45215
 S. E. Mighton Co., Bedford, Ohio 44014
 Milk Specialties, Inc., Dundee, Il. 60118
 Miller Milling Service, Bowling Green, Ky. 42101
 Mineral Products Co., Indianapolis, In. 46221
 Mississippi Cottonseed Products Co., Grenada, Ms. 38901
 Model Mills, Georgetown, Ky. 40324
 Mohawk Milling Co., Newport, Tn. 38721
 August Moldenhauer Mill, Menfro, Mo. 63765
 M.O.M. Distributors Inc., St. Cloud, Mn. 56301
 Monarch Feed Mills, Inc., Dexter, Mo. 63841
 Monarch Milling Co., Mt. Sterling, Ky. 40353
 Monroe Brothers Sweet Feed Mill, Cave City, Ky. 42127
 Monroe Sweet Feed Mill, Tompkinsville, Ky. 42167
 Moore's Feed Store, Pewee Valley, Ky. 40056
 Moore Lowry Flour Mills, Kansas City, Mo. 64112
 Moorman Manufacturing Co., Quincy, Il. 62302
 Morgan Packing Co., Inc., Austin, In. 47102
 Morgantown Feed Mill, Morgantown, Ky. 42261
 Mor-Milk Co., Dixon, Il. 61021
 John Morrell & Co., Chicago, Il. 60604
 Morton Salt Co., Chicago, Il. 60606
 L. A. Mosher Co., Atlanta, Ga. 30301
 Mother's Cookie Co., Louisville, Ky. 40216
 Mowat, Wilson & Co., Detroit, Mi. 48235
 Mullican Feed Mill, Inc., Stanley, Ky. 42375
 Munfordville Milling Co., Munfordville, Ky. 42765
 Murphy Grain & Milling Co., Owensboro, Ky. 42301
 Mutual Products Co., Minneapolis, Mn. 55401
 Henry Nagel & Son, Cincinnati, Oh. 45214
 Naremco, Inc., Springfield, Mo. 65805
 Nashville Cotton Oil Mill Co., Nashville, Tn. 37202
 National Alfalfa Dehydrating & Milling Co., Shawnee Mission, Ks. 66201
 National Alfalfa Dehydrating & Milling Co., Overland Park, Ks. 62202
 National Biscuit Co., New York, N. Y. 10022
 National Biscuit Co., Toledo, Oh. 43603
 National Distillers Products, Cinn., Oh. 45246
 National Molasses Co., Cincinnati, Oh. 45201
 National Molasses Co., Willow Grove, Pa. 19090
 National Oats Co., E. St. Louis, Il. 62205
 National Oats Co., Cedar Rapids, Ia. 52402
 National Packing Co., Greenville, Ms. 38701
 National Starch & Chemical Corp., Indianapolis, In. 46221
 Neumond, Inc., St. Louis, Mo. 63110
 The New Century Co., Chicago, Il. 60609
 New Era Milling Co., Arkansas City, Ks. 67005
 Nicholas Co. Feeders Supply, Carlisle, Ky. 40311
 Nipak, Inc., Dallas, Tx. 75221
 Northern Ohio Sugar Co., Denver, Co. 80217
 Northern Ohio Sugar Co., Findley, Oh. 45840
 Northern Ohio Sugar Co., Fremont, Oh. 43420
 Norwich Animal Industry Inc., New York, N.Y. 13815
 Charles Nunn & Sons Milling, Evansville, In. 47712
 Nutrena Mills, Inc., Minneapolis, Mn. 55402
 Occidental Chemical Co., Houston, Tx. 77001
 Ohio Blenders, Inc., Toledo, Oh. 43611
 Old Stanley Distillery, Inc., Stanley, Ky. 42375
 Orleans Canning Co., Chicago, Il. 60603
 Orleans Dog Candy Co., Chicago, Il. 60603
 Osceola Products Co., Osceola, Ar. 72370
 Owensboro Grain Co., Inc., Owensboro, Ky. 42301
 Owensboro Milling Co., Owensboro, Ky. 42301
 Pacific Molasses Co., San Francisco, Ca. 94105
 Packmaster, Inc., Cincinnati, Oh. 45208
 Packers By-Products Co., St. Louis, Mo. 63177
 Pan American Mills, Bowling Green, Ky. 42101
 Pan Pacific Fisheries, Inc., Terminal Island, Ca. 90731
 Phillip R. Park, Inc., San Pedro, Ca. 90731
 Paymaster Oil Mill Co., Bossier City, La. 71010
 Paymaster Oil Mill Co., Phoenix, Az. 85002
 Pearl Packing Co., Inc., Madison, In. 47250
 Peavy Co. Flour Mills, Minneapolis, Mn. 55415
 Pedrick Laboratories, Sand Springs, Ok. 74063
 Pendleton County Mills, Falmouth, Ky. 41040
 Penick & Ford Limited, Inc., Cedar Rapids, Ia. 52406
 Stanley Penn & Sons, Lexington, Ky. 40508
 Perk Foods Co., Div. Vets, Chicago, Il. 60610
 Chas. Pfizer & Co., Inc., New York, N.Y. 10017
 Philips Roxane Div., Kansas City, Ks. 66106
 Phillips Petroleum Co., Bartlesville, Ok. 74004
 Pierce & Williams, Hopkinsville, Ky. 42240
 Pillsbury Co., Minneapolis, Mn. 55403
 Pioneer Farm Service, Owensboro, Ky. 42301
 Pittsburgh Plate Glass Co., Red Wing, Mn. 55066
 Plains Coop. Oil Mill, Lubbock, Tx. 79408
 Planters Manufacturing Co., Clarksdale, Ms. 38614
 Planters Oil Mill, Tunica, Ms. 38676
 Portland Feed Mill & Sup., Portland, Tn. 37148
 Price-Wilhoite Co., Frederick, Md. 21701
 Princeton Mills, Princeton, Ky. 42445
 Producers Farm Center, Clinton, Ky. 42031
 Provico Feeds & Concentrates, Botkins, Oh. 45306
 Pup Corn Brands, Inc., New Britain, Ct. 06053
 Quaker Oats Co., Chicago, Il. 60654
 Quaker Oats Co., Castleton, In. 46250
 Quaker Oats Co., Lawrenceburg, In. 47025
 Quaker Oats Co., Shiremantown, Pa. 17091
 Quaker Oats Co., Memphis, Tn. 38108
 Quincy Soybean Co., Quincy, Il. 62301

- Quinn Menhaden Fisheries, of La., Empire,
La. 70050
- Ralston Purina Co., St. Louis, Mo. 63199
- Randolph Milling Co., Bandana, Ky. 42022
- Raymondville Cotton Oil Co., Raymondville,
Tx. 78580
- Red Star Yeast & Products Co., Milwaukee,
Wi. 53202
- Reelfoot Alfalfa Mill, Tiptonville, Tn. 38079
- Reelfoot Packing Co., Union City, Tn. 38261
- Reliance Chemicals Corp., Houston, Tx. 77024
- Richland Mills, Pulaski, Tn. 38478
- Rico Liquids, Inc., Aliceville, Al. 35442
- Ringgold Milling Co., Clarksville, Tn. 37042
- Rival Pet Foods, Chicago, Il. 60632
- Riverside Oil Mill, Marks, Ms. 38646
- Riviana Foods, Inc., Abbyville, La. 70510
- Robbins Brothers, Auburn, Ky. 42206
- Robertson Corp., Seymour, In. 47274
- Allen Robertson & Co., Louisville, Ky. 40202
- Robinson Grain Co., Union City, Tn. 38261
- Robinson Grain Co., Hickman, Ky. 42050
- Robinson Milling Co., Somerset, Ky. 42501
- Roche Chemical Division, Nutley, N.J. 07110
- Rogers Feed Store, Corinth, Ky. 41010
- Rome Oil Mill Div., Rome, Ga. 30162
- G. P. Rose & Co., Inc., Nashville, Tn.
37211
- Russell Springs Milling Co., Russell Spring,
Ky. 42642
- Sandusky Mill, Harrodsburg, Ky. 40330
- Charles H. Schenck & Sons, Vincennes, In.
47591
- Schenley Distillers, Inc., Frankfort, Ky.
40601
- Schenley Distillers, Inc., New York, N.Y.
10019
- John Schlemmer, Harrison, Oh. 45030
- Jos. Schlitz Brewing Co., Milwaukee, Wi.
53201
- J. F. Schneider & Son, Middlesboro, Ky.
40965
- Scioto Farm Bureau Co-op Assn., Lucasville,
Oh. 45648
- Scott County Milling Co., Sikeston, Mo. 63801
- Sea-Born Mineral Div. Skod, Greenwich, Ct.
06831
- Joseph E. Seagram & Sons, Inc., New York,
N.Y. 10022
- Seaboard Allied Milling Corp., Kansas City,
Mo. 64108
- Sea-Glo Products, Chetek, Wi. 54728
- Security Mills, Inc., Knoxville, Tn. 37901
- Shafer Formula Co., Inc., Cleghorn, Ia. 51014
- Sherwin-Williams Co., Cleveland, Oh. 44101
- J. R. Short Milling Co., Mt. Vernon, In. 47620
- Siemer Milling Co., Teutopolis, Il. 62467
- Sikeston Cotton Oil Mill, Sikeston, Mo. 63801
- Simpson Milling Co., Waynesburg, Ky. 40489
- Smith Sweet Feed Mill Inc., Bowling Green,
Ky. 42101
- Smithfield Milling Co., Smithfield, Ky. 40068
- Snyder Molasses Co., Chicago, Il. 60626
- Solar Nitrogen Chemicals, Inc., Lima, Oh.
45801
- Southern Canning Div. SMS Inc., Highlands,
Tx. 77562
- Southern Cotton Oil Co., Decatur, Al. 35601
- Southern Cotton Oil Co., Huntsville, Al. 35804
- Southern Cotton Oil Co., Montgomery, Al. 36101
- Southern Cotton Oil Co., New Orleans, La.
70112
- Southern Cotton Oil Co., Memphis, Tn. 38104
- Southern Cotton Oil Co., Greenville, Ms. 38701
- So. States Bardstown Coop., Bardstown, Ky.
40004
- So. States Glasgow Coop., Glasgow, Ky. 42141
- So. States Hardin Coop., Elizabethtown, Ky.
42701
- So. States Hopkinsville Coop., Hopkinsville,
Ky. 42240
- So. States LaGrange Coop., LaGrange, Ky. 40031
- So. States Lebanon Coop., Lebanon, Ky. 40033
- So. States Leitchfield Coop., Leitchfield,
Ky. 42754
- So. States London Coop., London, Ky. 40741
- So. States Owenton Coop., Owenton, Ky. 40359
- So. States Richmond Coop., Richmond, Ky. 40475
- So. States Somerset Coop., Somerset, Ky. 42501
- So. States Coop., Baltimore, Md. 21203
- So. States Coop., Richmond, Va. 23213
- Southern Rendering Co., Shelbyville, Tn. 37160
- Sowell Brothers Feed Mill, Cerulean, Ky. 42215
- Woodford Spears & Sons, Paris, Ky. 40361
- Spears-Kiser Co., Inc., Paris, Ky. 40361
- Specialty Feeds Inc., Horn Lake, Ms. 38637
- Spencer Farm Services, Taylorsville, Ky. 40071
- Spencer Kellogg, Buffalo, N.Y. 14240
- Sphar & Company, Mt. Carmel, Il. 62863
- Sportsman Dog Food Co., Chicago, Il. 60632
- Square Deal Fortification Co., Kouts, In. 46347
- A. E. Staley Manufacturing, Decatur, Il. 62525
- Standard Brands, Inc., New York, N.Y. 10022
- Standard Brands, Inc., Chicago, Il. 60613
- Standard Products, Inc., Kilmarnock, Va. 22482
- Stanford Creamery, Stanford, Ky. 40484
- Star-Kist Foods, Inc., Terminal Island, Ca.
90730
- Stauffer Chemical Co., New York, N. Y. 10017
- Stewarts Feed Mill, Flat Lick, Ky. 40935
- F. W. Stock & Sons, Inc., Hillsdale, Mi. 49242
- Strid Grain Co., Green Bay, Wi. 54306
- Strongheart Packing Co., Chicago, Il. 60604
- Strongheart Products Co., Kansas City, Ks.
66110
- Sturgis Milling Co., Sturgis, Ky. 42459
- Summer Shade Roller Mills, Summer Shade, Ky.
42166
- Sunshine Feed Mills, Inc., Red Bay, Al. 35582
- Sunshine Molasses Co., Somerset, Ky. 42501
- Supreme Mills, Glasgow, Ky. 42141
- D. B. Sutherland & Sons, Bloomfield, Ky. 40008
- Swift & Co., Pet Food, Chicago, Il. 60604
- Swift & Co., Oil Mill, Memphis, Tn. 38114
- T. & H. Feed Service, Lebanon, Ky. 40033
- Tabor Feed Mill, Columbia, Ky. 42728
- Taylor County Feed Co., Campbellsville, Ky.
42718
- T. C. Products, Madison, Wi. 53701
- Teater & Cassity, Nicholasville, Ky. 40356
- Tennessee Farmers Cooperative, LaVergne, Tn.
37086
- Thompson & Nash, Inc., Shelbyville, Ky. 40065
- Thorobred Co., Inc., Waynesville, Oh. 45068
- Thrifty Supplements, Rockford, Oh. 45882
- Thurmonds Coal & Feed Co., Murray, Ky. 42071
- Topeka Molasses Co., Ligonier, In. 46767
- Mr. Toymaker Enterprises, Atlanta, Ga. 30318
- Tree City Specialties, Greensburg, In. 47240
- Trenton Oil Mill Co., Trenton, Tn. 38385
- Tri-Associates, Inc., Minneapolis, Mn. 55403
- Tri-County Farm Supply, Corbin, Ky. 40701
- Tri-State Molasses Co., Inc., Nashville, Tn. 37213
- Triple "F" Feeds, Des Moines, Ia. 50322
- Tupelo Oil Mill, Inc., Tupelo, Ms. 38801

Ultra-Life Laboratories, E. St. Louis, Il.
62201
Union County Grain Co., Sturgis, Ky. 42459
Union Sales Corp., Columbus, In. 47201
U. S. Public Health Service Hospital,
Lexington, Ky. 40507
United States Sugar Corp., Clewiston, Fl.
33440
Usen Products Co., Woburn, Ma. 01801
Van Camp Sea Food, Long Beach, Ca. 90812
Vets Div.of Perk Foods Co., Chicago, Il.
60610
Vit-A-Way, Inc., Ft. Worth, Tx. 76106
Vita Plus Corporation, Madison, Wi. 53701
Vitamineral Products Co., Peoria, Il. 61603
Vylactos Laboratories, Syracuse, In. 46567
Vylactos Laboratories, Des Moines, Ia. 50313
Warners Farm Supply, Somerset, Ky. 42501
Watkins Products Co., Inc., Winona, Mn. 55987
Watkins Products Co., Inc., Memphis, Tn. 38102
George Wiedmann Brewing Co., Newport, Ky. 41071
Weisenberger Mills, Midway, Ky. 40347
Ralph Wells & Co., Monmouth, Il. 61462
West Tennessee Soya Mill, Inc., Tiptonville,
Tn. 38257
Western Alfalfa Corp., Kansas City, Mo. 64141
Western Grain Co., Birmingham, Al. 35201
Martha White, Inc., Nashville, Tn. 37203
Martha White Mills of W. Va., Huntington,
W. Va. 25706
Whitewater Flour Mills, Whitewater, Ks.
67154
Whitmer Co., Bowling Green, Ky. 42101
Whitmoyer Laboratories, Inc., Myerstown,
Pa. 17067
Whiz Pet Food Co., Seattle, Wa. 98114
R. L. Wiles Feed Mills, Inc., Nashville,
Tn. 37210
Williamstown Roller Mill, Williamstown, Ky.
41097
Wilson and Company, Inc., Chicago, Il.
60601
Wilson Feed Mill, Annville, Ky. 40402
Winn Milling Co., Greensburg, Ky. 42743
Woodford Feed Co., Versailles, Ky. 40383
Yazoo Valley Oil Mill, Greenwood, Ms.
38930
Yopp Seed Co., Paducah, Ky. 42001
Yukon Mill & Grain Co., Yukon, Ok. 73099
Xtra Factors, Inc., Ephrata, Pa. 17522

AVERAGE COMPOSITION OF THE MORE COMMON FEEDSTUFFS

Feedstuff	Protein	Fat	Carbohydrates		Water	Ash
			Fiber	N.F. Extract		
Alfalfa Leaf Meal	21.0	2.8	16.0	40.5	7.7	12.0
Alfalfa Meal	14.0	2.0	30.0	36.0	9.0	9.0
Barley	12.0	2.0	5.4	67.3	10.6	2.7
Barley Feed	13.5	3.5	8.7	60.9	9.3	4.9
Beet Pulp, Dried	9.2	0.5	19.8	47.2	9.9	3.4
Blood, Dried	84.5	1.1	1.0	0.7	8.2	4.5
Bone Meal, Raw	26.0	5.0	1.0	2.5	6.4	59.1
Bone Meal, Steamed	7.5	1.2	1.5	3.2	5.7	81.3
Brewers Dried Grains	25.0	6.4	16.0	41.0	7.7	3.9
Buckwheat	10.8	2.5	10.5	62.3	12.0	1.9
Buttermilk, Dried	33.0	6.0	0.3	43.1	7.6	10.0
Buttermilk, Semi-Solid	13.4	3.0	0.0	15.9	65.0	2.7
Citrus Meal	5.9	3.1	11.5	62.7	9.9	6.9
Coconut Oil Meal	20.5	8.0	10.0	45.0	9.5	6.5
Corn	8.0	3.9	2.0	69.9	15.0	1.2
Corn Bran	9.7	7.3	9.2	62.0	9.4	2.4
Corn and Cob Meal	7.0	3.5	8.0	66.1	14.1	1.5
Crushed Ear Corn & Shucks	7.0	3.0	10.6	69.2	11.0	1.8
Corn Chops	8.0	3.5	2.0	71.0	14.0	1.5
Corn Feed Meal	8.0	4.5	3.0	71.0	11.4	2.0
Corn Germ Meal	21.0	9.0	9.0	50.7	7.0	3.3
Corn Gluten Feed	25.5	2.7	7.6	48.8	9.1	6.3
Corn Gluten Meal	43.1	2.0	4.0	39.8	8.6	2.5
Cottonseed Meal	41.5	6.3	10.4	28.1	7.2	6.5
Cottonseed Meal Solvent	41.1	2.1	11.0	31.1	9.2	6.8
Distillers Dried Grains, Corn	26.1	8.8	12.8	44.2	7.1	2.5
Distillers Dried Grains, Rye	24.4	5.6	11.5	48.3	6.1	22.4
Distillers Dried Solubles	28.5	9.6	4.4	42.5	7.0	7.4
Fish Meal	60.9	6.8	0.9	5.0	7.1	17.6
Flaxseed	24.0	35.9	6.3	24.0	9.2	4.3
Flaxseed Screenings Oil Feed	25.0	7.1	11.7	40.3	8.1	7.8
Hominy Feed	11.2	6.9	5.2	64.2	9.6	2.9
Lespedeza Seed	36.6	7.6	9.6	32.8	8.3	5.1
Linseed Meal	35.4	5.8	8.2	36.0	9.0	5.6
Linseed Meal Solvent	36.6	1.0	9.3	38.3	9.6	5.6
Malt Sprouts	26.8	1.3	14.2	44.3	7.4	6.0
Meat Meal, 55%	55.8	9.3	2.1	1.3	6.1	25.4
Meat & Bone Meal, 50%	51.0	10.1	2.1	1.6	6.1	29.1
Molasses, Cane	3.0	0.0	0.0	61.7	25.7	6.1
Molasses, Beet	7.8	0.0	0.0	62.1	22.0	7.0
Oats	12.0	4.6	11.0	58.6	10.4	3.4
Oat Kernels	16.0	6.4	1.6	66.0	8.0	2.0
Oat Middlings	15.9	5.2	3.3	64.6	8.6	2.4
Peanut Kernels	30.4	47.7	2.5	11.7	5.4	2.3
Peanut Meal	43.5	7.6	13.3	23.4	7.0	5.2
Peanut Meal, Solvent	51.5	1.4	5.7	27.2	8.4	5.8
Peanut Skins	15.9	22.4	10.6	42.2	6.2	2.7
Rice Bran	12.5	12.5	12.5	44.0	9.0	9.5
Rye	11.8	1.8	1.8	73.2	9.4	2.0
Rye Middlings	16.6	3.4	5.2	61.2	9.8	3.8
Skimmed Milk, Dried	34.0	1.0	0.0	51.0	6.0	8.0
Sorghum Grains	9.5	3.4	2.0	72.2	12.0	1.9
Soybean (Seed)	36.5	17.5	4.3	26.5	9.9	5.3
Soybean Meal	44.3	5.3	5.7	29.6	9.1	6.0
Soybean Meal, Solvent	46.1	1.0	5.9	31.8	9.4	5.8

AVERAGE COMPOSITION OF THE MORE COMMON FEEDSTUFFS, CONTINUED

Feedstuff	Protein	Fat	Carbohydrates		Water	Ash
			Fiber	N.F. Extract		
Meat Meal Tankage, 60%	60.6	8.5	2.0	1.8	6.9	20.2
Meat Meal Tankage with Bone 50%	51.3	11.5	2.3	2.3	6.2	26.1
Wheat	10.5	1.7	2.8	72.9	10.2	1.9
Wheat Bran	14.0	3.5	9.5	56.9	10.1	6.0
Wheat Mill Run	13.5	3.5	7.5	60.2	10.1	5.2
Wheat Middlings	15.0	3.5	7.0	58.7	10.3	5.4
Wheat Shorts	15.0	3.5	6.0	60.6	10.5	4.4
Wheat Red Dog	16.0	3.5	3.0	66.4	8.5	2.6
Wheat Flour, Patent	10.9	1.3	0.4	74.7	12.3	0.5
Wheat Germ Meal	27.8	9.2	3.3	44.4	8.9	4.5
Grain Screenings (From Wheat)	10.5	1.7	2.8	70.8	9.6	4.6
Whey, Dried	12.2	0.8	0.2	70.4	6.5	9.9
Yeast Brewers, Dried	44.9	0.7	2.7	38.8	6.2	6.9
Yeast, Irradiated, Dried	48.7	1.1	5.5	32.2	6.4	6.4

ROUGHAGES

Alfalfa Hay	14.5	2.3	29.7	36.3	8.6	8.6
Blue Grass Hay	8.2	2.5	29.8	42.5	10.5	6.5
Clover Hay, White	14.4	2.4	22.5	40.9	12.0	7.8
Clover Hay, Red	11.8	2.6	27.3	40.1	11.8	6.4
Corn Stover, Without ear	5.9	1.6	30.8	46.5	9.4	5.8
Corn Stover, With Ear	7.8	2.2	27.1	47.6	8.9	6.4
Cowpea Hay	18.6	2.6	22.5	35.1	9.9	11.3
Fescue Hay	7.0	1.9	30.3	43.2	11.8	6.8
Lespedeza Hay	13.5	2.5	28.0	40.1	10.5	5.4
Soybean Hay	15.5	2.8	26.5	38.7	9.2	7.3
Timothy Hay	6.2	2.5	29.8	45.0	11.6	4.9

FILLERS

Alfalfa Stem Meal	11.5	1.3	36.3	34.8	9.0	7.1
Corn Cob	2.3	0.4	32.1	54.0	9.6	1.6
Corn Husk or Shuck	3.4	0.9	28.2	49.6	15.0	2.9
Cottonseed Hulls	3.9	1.0	45.5	37.2	9.7	2.7
Flax Plant By-Products	6.4	2.1	44.4	33.1	8.1	5.9
Oat Mill By-Products	5.6	1.8	27.9	50.8	7.6	6.3
Oat Hull Feed	3.5	1.5	32.5	49.3	7.6	5.6
Oat Hulls	3.0	1.0	35.0	47.7	6.8	6.5
Screenings*						
Chaff and Dust **						

* Varies in quality from fair.

** Varies in quality from poor to worthless and even dangerous.

Miscellaneous Samples Analyzed in 1947-68

Feedstuff	Protein	Fat	Fiber
Activated Sewer Sludge	29.2	6.0	6.7
Alfalfa Silage	4.0	0.9	9.5
Barley Bran	15.2	5.2	14.9
Bluegrass Chaff	7.1	1.9	28.5
Bluegrass Screenings	6.7	2.0	26.1
Blackberry Seeds	9.6	---	---
Bread	12.5	5.3	0.7
Brewers Wet Grains	10.3	1.0	3.4
Buckwheat Feed & Hulls	9.6	2.9	22.4
Cake, Ground	4.8	9.9	1.5
Cob & Shuck Meal	3.2	0.6	31.6
Cookie Meal	7.7	8.6	0.8
Corn Dust	7.1	2.7	1.7
Corn Blowings	8.7	1.9	15.7
Corn Fodder & Soybean Plant	10.1	3.9	17.0
Cracklings, Edible	67.1	28.1	1.1
Cracklings, Inedible	44.1	22.2	3.0
Distillers Thin Slop	1.4	---	---
Fescue Silage	2.8	1.3	8.9
Honey Suckle	2.8	0.02	6.0
Ice Cream Cones, Ground	9.2	1.5	0.7
Johnson Grass	7.8	0.8	37.6
Kale Seed	24.3	40.0	9.6
Korean Hay	13.9	---	---
Korean Screenings	21.9	3.6	20.8
Lespedeza Screenings	19.8	15.7	26.2
Lima Beans, Ground	21.5	1.5	6.1
Malt Hulls, Ground	10.3	1.8	22.5
Osage Orange Apple	2.5	4.3	1.7
Peanut Vine Meal	10.1	2.3	34.0
Popcorn, Ground	9.4	2.5	2.7
Popcorn, Popped and Crushed	8.4	12.8	2.9
Potato Flour	2.0	---	---
Potato Flakes	9.0	---	---
Rag Weed Seed	17.2	16.2	34.4
Sorghum, Ground (Stalk & Leaves)	4.1	2.9	19.6
Ground Unthreshed Heads of Grain Sorghum	6.4	2.1	10.5
Fescue & Clover Silage	2.0	1.0	8.0
Oat Silage	1.9	1.5	9.8
Straw Silage	6.5	3.0	19.5
Sudan Grass Silage	5.9	1.1	14.0
Sudan & Soybean Silage	2.4	0.6	7.9
Vetch Seed	26.4	0.7	7.6
Walnut Shells & Meats	13.2	24.2	27.1
Walnut Meat Skins & Small Amount of Shell	21.5	45.5	12.0
Wheat Toast, Ground	12.6	4.9	0.5
Wild Onions	6.7	0.2	1.0
Wheat Silage	4.4	1.4	22.7

UREA

The following information may be of some help to manufacturers and feeders using urea.

Urea is a white crystalline powder made by combining ammonia and carbon dioxide under pressure in equipment that will withstand high temperature.

Urea contains 46.5% nitrogen, which is equivalent to 291% protein. The commercial product "262" Feed Compound, is urea which has been diluted with other materials to prevent caking, and contains 42% nitrogen which is equivalent to 262% protein. The addition of 1 percent of this material to a dairy feed is equivalent to adding 2.62% protein. Besides urea's protein equivalent value, one must also consider its lack of energy value as compared to the common high protein feeds. An example of this, if the nitrogen in urea is used as efficiently as the nitrogen in high protein feeds, it will require approximately 14 pounds of urea, plus 100 pounds of grain to replace 100 pounds of soybean meal.

Urea, when used as an ingredient in feeds sold in Kentucky is shown in the guaranteed analysis as follows:

Crude Protein, Not less than _____	%
This includes not more	
than _____ % of equivalent crude	
protein from non-Protein Nitrogen	
Crude Fat, not less than _____	%
Crude Fiber, not more than _____	%

One percent of "262 Feed Compound" would be 2.62% equivalent protein from non-protein nitrogen. Urea should be shown as an ingredient under "Ingredients."

Cattle, sheep, and goats are able to convert urea to a usable form through the action of micro-organisms in the rumen. The organisms convert the nitrogen of urea to protein in their cell bodies which are in turn digested by the animal.

Horses, swine, dogs, and other single-stomach animals are unable to utilize urea. If used in large quantities, it may be toxic to such animals.

The Association of American Feed Control Officials has a regulation to the effect that urea be used in such limited quantities as to insure the total amount present shall not exceed 3 percent of the (grain) ration or 1/3 of the total protein. If a feed contains more than 3 percent of urea, the label shall bear a statement of proper usage and the following in type of such conspicuousness as to render it likely to be read and understood by ordinary individuals under customary conditions of purchase and use:

CAUTION-USE AS DIRECTED

On labels such as those for medicated feeds which bear adequate feeding directions and/or warning statements, the presence of added non-protein nitrogen products shall require neither additional feeding directions nor the customary non-protein nitrogen warning statement.

CHANGES IN PRODUCT NAMES

<u>NEW NAME</u>	<u>OLD NAME</u>
Soybean Meal	Soybean Oil Meal
Linseed Meal	Linseed Oil Meal
Meat Meal	Meat Scraps
Meat Meal Tankage	Tankage or Digester Tankage
Wheat Middlings	Wheat Standard Middlings
	Wheat Gray Middling
	Wheat Brown Shorts
Wheat Shorts	Wheat Gray Shorts
	Wheat White Shorts
	Wheat Mixed Feed
Wheat Mill Run	Wheat Germ Oil Meal
Wheat Germ Meal	Oat Mill By Products
Oat Hulls	(If Fiber is over 22%)
	Rye Feed
Rye Mill Run	Rye Middlings
Rye Flour Middlings	Soybean Mill Product
Soybean Mill Feed	Vitamin A Feeding Oil
Vitamin A Oil	Vitamin D Feeding Oil
Vitamin D Oil	Vitamin A & D Feeding Oil
Vitamin A & D Oil	Molasses
Cane Molasses	
Corn Sugar Molasses	
Beet Molasses	
Citrus Molasses	
BHA (A Preservative)	Butylated Hydroxyanisole (A Preservative)
BHT (A Preservative)	Butylated Hydroxy Toluene (A Preservative)

THE MEDICATED FEED LABEL

The medicated label is to be used for all medicated feeds, which contain drugs for specific purposes, such as: Prevention of diseases, treatment of diseases, aid in control of diseases, hormone action, worming, etc. It is also to be used for certain non-antibiotic drugs added for growth stimulation and feed efficiency purposes (i.e., organic arsenicals). It is also to be used for feeds containing antibiotics at low levels for growth promotion and improved feed efficiency. The following features should be noted:

1. The word "Medicated" shall appear directly following and below the product name, in type-size no smaller than one-half the type-size of the product name.
2. The purpose statement shall appear below the term "Medicated." It should be precise and simple.
3. Active drug ingredients (list of common names, not trade names) and percentage present, except low level antibiotics for growth promotion and feed efficiency in feeds which are to be fed continuously as a sole ration for each drug. All products which contain less than 2,000 grams (total) of antibiotics per ton are to be expressed in grams per ton, and all products which contain 2,000 grams or more are to be expressed in grams per pound. The term "milligrams per pound" may be used, in lieu of percentage declarations for drugs (including antibiotics), on the label only in those cases where a dosage is given as "milligrams per day" in the feeding directions. Note that the hormone percentage need not be stated in the product name but may appear only as a regular active drug ingredient guarantee.

Labels for feeds containing growth promotion and/or feed efficiency levels of antibiotics, which are to be fed continuously as a sole ration, are not required, at the present time, to make quantitative guarantees, except as specifically indicated in certain instances in the Federal Food Additive Regulations for certain antibiotics, such as Tylosin, Oleandomycin, and Nystatin, wherein quantitative guarantees are required regardless of the level or purpose of the antibiotic.

LABEL FOR ALL MEDICATED FEEDS

100 LBS. NET WEIGHT

**BLUE BIRD
CHICK STARTER 3218****MEDICATED**

To aid in preventing outbreaks of coccidiosis. Follow feeding directions and warning statement on back of this label.

Active Drug Ingredient(s)

Nicarbazin 0.0125%

Guaranteed Analysis

Crude Protein, not less than..... 20.0%
Crude Fat, not less than 4.0%
Crude Fiber, not more than 3.0%

INGREDIENTS

Each ingredient must be specifically named (unless stated as such in the guaranteed analysis listing) in accordance with the names and definitions adopted by the AAFCO.

Manufactured by

BLUE BIRD FEED MILLS

Robin, Indiana

TABLE 1 REPORT OF OFFICIAL FEED SAMPLES ANALYZED, 1968

For samples not passed see Table 2

NAME AND ADDRESS OF MANUFACTURER	Number of Samples Analyzed and Examined	Number of Samples Passed	Number of Samples Not Passed
Adairville Feed Mill, Adairville, Ky. 42202	1	1	
Ade Chemical Co., Inc., Tiskilwa, Il. 61368	1		1
Ag Services, Inc., Bowling Green, Ky. 42101	2	2	
Albany Mills, Albany, Ky. 42602	2	2	
Albers Milling Co., Los Angeles, California 90036	1	1	
Allen Products Co. Inc., Allentown, Pa. 18104	2	1	1
Allen Products Co. of Nebraska, Crete, Nebr.68333	3	2	1
Allied Foods, Inc., Atlanta, Ga. 30318	7	5	2
Allied Mills, Inc., Libertyville, Illinois 60048	162	151	11
American Cyanamid Co., Princeton, New Jersey 08540	2	2	
Amory Cotton Oil Co., Inc., Amory, Miss. 38821	1	1	
Anderson County Farm Serv., Lawrenceburg, Ky.40422	5	5	
Anderson and Spilman, Danville, Ky. 40422	12	9	3
Anglo Sweet Feed Mill, Inc., Owensboro, Ky. 42301	12	12	
Archer Daniels Midland Co., Minneapolis, Minn. 55440	2	2	
Armour and Co., Chicago, Illinois 60609	2	2	
Ashland Milling Co., Inc., Ashland, Ky. 41101	3	3	
Astor Products, Inc., Jacksonville, Florida 32203	3	2	1
Aubrey Feed Mills, Inc., Louisville, Ky. 40204	186	181	5
Auburn Mills, Inc., Auburn, Ky. 42206	8	7	1
Bagdad Roller Mills, Bagdad, Ky. 40003	27	20	7
Barton Distilling Co., Bardstown, Ky. 40004	8	8	
Baughman Milling Co., Stanford, Ky. 40480	5	5	
B. A. Bernard & Co., Inc., Camden, N.J. 08104	1		1
Best Feeds & Farm Supplies, Oakdale, Pa. 15071	1	1	
Bi-County Farm Bureau Coop., Florence, Ky. 41042	8	8	
Big Four Feed & Implement Co., Scottsville, Ky. 42164	2	2	
Bisset Farm Supply, Harrodsburg, Ky. 40330	4	4	
Blue Barn Dog Food Co., New Albany, Ind. 47150	9	7	2
Blue River Feed Mills, Inc., Edinburg, In. 46124	20	18	2
Boone County Farm Supply, Walton, Ky. 41094	2	2	
Boone Valley Coop. Proc., Eagle Grove, Ia. 50533	1	1	
Boones Feed Store, Stanford, Ky. 40484	3	3	
Brooksville Farm Supply, Brooksville, Ky. 41004	1	1	
Browder Milling Co., Fulton, Ky. 42041	8	8	
Brown-Forman Distillers, Louisville, Ky. 40201	2	2	
Brown Molasses Co., Bremen, Indiana 46506	3	3	
Bryant & Crume Milling Co., Caneyville, Ky. 42721	14	12	2
Buckeye Cellulose Corp., Cincinnati, Oh. 45201	2	2	
Bugg Brothers Feed & Supply, Arlington, Ky. 42021	1	1	
Buhler Mills, Inc., Buhler, Ks. 67522	1	1	
Bush Brothers & Co., Clinton, Tennessee 37716	7	7	
Cadiz Milling Co., Cadiz, Kentucky 42211	6	6	
Calhoun & Wathen, Inc., Madisonville, Ky. 42431	4	4	
Caneyville Roller Mill Co., Caneyville, Ky. 42721	12	12	
Cardinal Foods Products Inc., St. Louis, Mo. 63103	1	1	
Carey Salt Co., Hutchinson, Kansas 67501	3	2	1
Cargill, Inc., Cincinnati, Oh. 45204	1	1	
Carroll County Farm Bureau Coop., Carrollton, Ky. 41008	1	1	
Carnation Company, Los Angeles, California.90036	3	1	2
Central Soya Co., Inc., Ft. Wayne, Ind. 46802	202	193	9
Central Soya of Clinton, Inc., Clinton, Ky. 42031	13	12	1
Chalybeate Feed Mill, Smiths Grove, Ky. 42171	1	1	
Check-R-Board, Owensboro, Ky. 42301	1	1	
Chef Pet Foods, Inc., Delevan, Wisconsin 53115	1	1	
Citizens Milling Co., Somerset, Ky. 42501	3	3	
H. C. Cole Milling Co., Chester, Il. 62233	3	3	
Community Milling Co., Irvington, Ky. 40146	10	9	1
Community Feed Mill, Belton, Ky. 42324	3	3	
Cooperative Mills, Cincinnati, Ohio 45215	15	15	
Crescent Roller Mills, Taylorsville, Ky. 40071	10	10	
Custom Feed Mills, Morganfield, Ky. 42437	21	19	2
Dearborn Mills, Aurora, Indiana 47001	10	10	

TABLE 1 REPORT OF OFFICIAL FEED SAMPLES ANALYZED, 1968

For samples not passed see Table 2

NAME AND ADDRESS OF MANUFACTURER	Number of Samples Analyzed and Examined	Number of Samples Passed	Number of Samples Not Passed
Decatur Cotton Oil Co., Decatur, Al. 35601	2	2	
Dicken Mill, Mentor, Kentucky 41060	3	3	
Dixie Mills Co., E. St. Louis, Il. 62202	3	3	
Dixie Portland Flour Mills, Arkansas City, Kansas 67005	1	1	
Dixie Portland Flour Mills, Chattanooga, Tn. 37401	1	1	
Dixie Portland Flour Mills, Memphis, Tenn. 38101	1	1	
Doane Feed Products Co., Joplin, Mo. 64801	1	1	
Duncan-McFarland Farm Service, Lawrenceburg, Ky. 40342	6	5	1
Dyersburg Oil Mill Co., Dyersburg, Tn. 38024	1	1	
Edmonton Farm Center, Edmonton, Ky. 42129	1	1	
Emge Packing Co., Inc., Ft. Branch, Ind. 47533	1	1	
F. L. Emmert Co., Inc., Cincinnati, Oh. 45214	4	4	
John W. Eshelman & Sons, Circleville, Oh. 43113	27	27	
John W. Eshelman & Sons, Lancaster, Pa. 17604	7	6	1
Evans Milling Co., Indianapolis, Ind. 46206	2	2	
Fabro Inc., Atlanta, Ga. 30318	1		1
Fabro of Ga., Inc., Atlanta, Ga. 30318	2	1	1
Famous Feed Mills, Nashville, Tn. 37201	8	7	1
Farm Service Center, Inc., Beaver Dam, Ky. 42320	3	3	
Farm Services, Inc., Glasgow, Ky. 42141	1	1	
Farmers Elevator Co., Franklin, Ky. 42134	2	2	
Farmers Feed Mill, Lexington, Ky. 40508	3	3	
Farmers Feed Store, Central City, Ky. 42330	4	4	
Farmers & Ginners Cotton Oil Mill, Birmingham, Al. 35201	3	3	
Farmers & Merchants Milling, Brooksville, Ky. 41004	1		1
Farmers Milling Co., Somerset, Ky. 42501	2	2	
Farmers Supply, Beaver Dam, Ky. 42320	1	1	
Farmers Supply & Produce Co., Monticello, Ky. 42633	2	2	
Farmington Sweet Feed Mill, Farmington, Ky. 42040	1	1	
Farmland Industries, Inc., Kansas City, Mo. 64116	1	1	
J. H. Fedders, Inc., Covington, Ky. 42014	7	7	
Fischer Packing Co., Louisville, Ky. 40201	2	2	
Food Products Co. of America, Chicago, Il. 60609	1	1	
Fort Negley Mills, Nashville, Tn. 37203	1		1
Foster Canning, Inc., Napoleon, Oh. 43545	1	1	
Fredonia Feed Mill, Fredonia, Ky. 42411	1	1	
Frosty Morn Meats, Clarksville, Tenn. 37041	1		1
Henry Fruechtenicht Inc., Louisville, Ky. 40202	181	174	7
Fruen Milling Co., Minneapolis, Minn. 55403	6	5	1
Garden Street Mill & Elevator, Louisville, Ky. 40203	4	4	
Garrard Farm Service, Lancaster, Ky. 40444	1	1	
Garrard Mills, Lancaster, Ky. 40444	3	3	
General Foods Corp., White Plains, N.Y. 10605	7	7	
General Packing Co., Waynesville, Oh. 45068	3		2
Gold Seal Products Co., Birmingham, Ala. 35203	1	1	
Goldenrod Oil Meal Sales Co., Memphis, Tn. 38101	3	3	
Grant Co. Farm Supply, Dry Ridge, Ky. 41035	1	1	
The Great A & P Tea Co. Inc., Brockport, N.Y. 14420	6	5	1
The Great Western Foods Co., Knoxville, Tn. 37901	1	1	
Green Co. Milling Co., Greensburg, Ky. 42743	3	3	
Guthrie Farm Service, Harrodsburg, Ky. 40330	3	3	
Guthrie Feed Mill, Guthrie, Ky. 42234	5	5	
Hardin Co. Milling Co., Elizabethtown, Ky. 42701	1	1	
Hardy Brothers Mills, Walton, Ky. 41094	2	2	
Harpeth Mills, Nashville, Tennessee 37203	2	1	1
Harvest Brand, Pittsburg, Kansas 66762	4	4	
T. J. Haycraft Sales & Service, Leitchfield, Ky. 42754	3	3	
Haydon Mill & Grain Co., Springfield, Ky. 40069	4	4	
Heaven Hill Distilleries, Bardstown, Ky. 40004	7	7	
Henry County Feeders Supply, Eminence, Ky. 40019	1	1	

TABLE 1 REPORT OF OFFICIAL FEED SAMPLES ANALYZED, 1968

For samples not passed see Table 2

NAME AND ADDRESS OF MANUFACTURER	Number of Samples Analyzed and Examined	Number of Samples Passed	Number of Samples Not Passed
Herning's Feed Mill, Hazel, Ky. 42049	1	1	
Burch Hester Feed Store, Hustonville, Ky. 40437	7	7	
Hi-Life Packing Co., Chicago, Illinois 60603	1	1	
Hills Div., Riviana Foods, Inc., Topeka, Kansas 66601			1
Frank Hinton & Son, Plummers Landing, Ky. 41089	1	1	
Hobbs Feed & Supply, Fancy Farm, Ky. 42039	1	1	
Home Milling Co., Greenville, Ky. 42345	2	2	
Honeggers & Co., Inc., Fairbury, Il. 61739	10	9	1
Hopkinsville Milling Co., Hopkinsville, Ky. 42240	2	2	
Hudsons Farm Service, Franklin, Ky. 42134	1	1	
Huff & Puff Pet Foods, Inc., Reedville, Va. 22539	1	1	
Igleheart Bros., Post Div., Evansville, Ind. 47707	6	6	
Indiana Farm Bureau Coop. Assn., Indianapolis, Indiana 46204	3	3	
International Milling Co., Minneapolis, Mn. 55415	25	25	
Jarvis Sweet Feed Mill, Livermore, Ky. 42352	1	1	
Kal Kan Foods, Inc., Los Angeles, Cal. 90058	8	5	3
Keco Milling Co., McKenzie, Tennessee 38201	4	3	1
Ky. Animal By-Products, Russellville, Ky. 42276	3	2	1
Ky. By-Products Corp., Louisville, Ky. 40211	2		2
Klarer of Ky., Inc., Louisville, Ky. 40201	1		1
Kraft Foods Co., Chicago, Illinois 60612	2	2	
LaCrosse Milling Co., Cochrane, Wisc. 54622	1		1
Lake County Oil Mill, Tiptonville, Tenn. 38079	4	4	
LeGrande Feed Mill, Horse Cave, Ky. 42749	1	1	
Lilly Bros. Seed Co., Hopkinsville, Ky. 42240	4	4	
Liv-A-Snaps, Inc., St. Paul, Mn 55105	1	1	
Livestock Industries, Inc., Park City, Ky. 42160	32	31	1
Lowes Feed & Hatchery, Bowling Green, Ky. 42101	12	8	4
Magic Feed Mills, Inc., Paoli, Ind. 47454	1	1	
Martin Sales Co., Toledo, Oh. 43606	1	1	
Mavar Shrimp & Oyster Co., Biloxi, Miss. 39530	2	2	
Mayes, Helm & Coyle, Perryville, Ky. 40468	2	2	
Mayfield Milling Co., Inc., Mayfield, Ky. 42066	9	9	
Mayfield Sweet Feed Mill, Mayfield, Ky. 42066	12	11	1
McCauley Brothers Seed Co., Inc., Versailles, Ky. 40383	4	4	
J. A. McDonald & Sons, Rogersville, Tn. 37857	1	1	
McGahan & Company, Paintsville, Ky. 41240	6	6	
Meadows Feed & Building Supply, Clay City, Ky. 40312	3	3	
Mennel Milling Company, Fostoria, Oh. 44830	1	1	
Mid-South Feeds, Inc., Nashville, Tn. 37209	7	6	1
Mid-South Molasses Co., Franklin, Tn. 37046	1	1	
Middlesboro Milling Co., Middlesboro, Ky. 40965	4	4	
Midget Mills, Somerset, Ky. 42501	1	1	
S. E. Mighton Co., Bedford, Oh. 44014	1	1	
Miller Milling Service, Bowling Green, Ky. 42101	1		1
Mississippi Cotton Seed Products, Granada, Miss. 38901	1	1	
Monarch Feed Mills, Inc., Dexter, Mo. 63841	2	2	
Monarch Milling Co., Mt. Sterling, Ky. 40353	2	2	
Moorman Manufacturing Co., Quincy, Il. 62301	38	37	1
Morgan Packing Co., Inc., Austin, Ind. 47102	2	2	
Morgantown Feed Mill, Morgantown, Ky. 42261	5	4	1
John Morrell & Co., Chicago, Ill. 60604	1	1	
Morrison Farm Supply, Hodgenville, Ky. 42748	1	1	
Munfordville Milling Co., Munfordville, Ky. 42765	2	2	
Murphy Grain & Milling Co., Owensboro, Ky. 42301	1	1	
Mutual Products Co., Minneapolis, Minn. 55401	1	1	
Henry Nagel & Son, Cincinnati, Oh. 45214	1	1	
Nashville Cotton Oil Mill Co., Nashville, Tn. 37202	1	1	
National Oats Co., East St. Louis, Il. 62205	27	27	
Nebo Mills, Nebo, Ky. 42441	1	1	

TABLE 1 REPORT OF OFFICIAL FEED SAMPLES ANALYZED, 1968

For samples not passed see Table 2

NAME AND ADDRESS OF MANUFACTURER	Number of Samples Analyzed and Examined	Number of Samples Passed	Number of Samples Not Passed
New Century Co., Chicago, Illinois 60609	1	1	
Northern Ohio Sugar Co., Findley, Oh. 45840	1	1	
Charles Nunn & Sons Milling, Evansville, In. 47712	12	12	
Nutrena Mills, Inc., Minneapolis, Mn. 55402	22	19	3
Orleans Canning Co., Chicago, Ill. 60603	2		2
Owensboro Grain Co., Inc., Owensboro, Ky. 42301	15	14	1
Owensboro Milling Co., Owensboro, Ky. 42301	21	18	3
Packmaster, Inc., Cincinnati, Oh. 45208	1	1	
Pan American Mills, Bowling Green, Ky. 42101	18	15	3
Pan Pacific Fisheries, Inc., Terminal Island Cal. 90731	1		1
Perk Foods Co., Div. Vets, Chicago, Ill. 60610	4	4	
Chas. Pfizer & Co., Inc., New York, N.Y. 10017	3	2	1
Pierce & Williams, Hopkinsville, Ky. 42240	1	1	
Pillsbury Co., Minneapolis, Mn. 55440	2	2	
Planters Manufacturing Co., Clarksdale, Ms. 38614	1	1	
Princeton Mills, Princeton, Ky. 42445	4	4	
Producers Farm Center, Clinton, Ky. 42031	5	5	
Quaker Oats Co., Chicago, Illinois 60654	41	35	6
Quaker Oats Company, Memphis, Tn. 38108	1	1	
Ralston Purina Company, St. Louis, Mo. 63199	450	418	32
Randolph Milling Co., Bandana, Ky. 42022	1	1	
Reelfoot Alfalfa Mill, Tiptonville, Tn. 38079	1	1	
Ringgold Milling Co., Clarksville, Tn. 37041	1	1	
Rival Pet Foods, Chicago, Illinois 60632	4	3	1
Riviana Foods, Inc., Abbeville, La. 70510	1	1	
Robbins Brothers Auburn Roller Mills, Auburn, Ky. 42206	2	2	
Robertson Corp., Seymour, Ind. 47274	13	13	
Allen Robertson & Co., Louisville, Ky. 40202	21	18	3
Robinson Grain Co., Hickman, Ky. 42050	1	1	
Robinson Milling Co., Somerset, Ky. 42501	5	5	
Rogers Feed Store, Corinth, Ky. 41010	2	2	
P. G. Rose & Co., Inc., Nashville, Tn. 37211	8	6	2
Russell Springs Milling Co., Russell Springs, Ky. 42642	1	1	
Sandusky Mill, Harrodsburg, Ky. 40330	9	9	
Charles H. Schenck & Sons, Vincennes, In. 47591	2	2	
John Schlemmer, Harrison, Oh. 45030	2	2	
Scott County Milling Co., Sikeston, Mo. 63801	12	12	
Joseph E. Seagram & Sons, New York, N. Y. 10022	2	2	
Security Mills, Inc., Knoxville, Tenn. 37901	9	9	
Siemer Milling Co., Teutopolis, Il. 62467	1	1	
So. States Frankfort Coop., Frankfort, Ky. 40601	2	2	
Southern Cotton Oil Co., Inc., Memphis, Tn. 38104	2	2	
Southern Cotton Oil Co., Inc., Harlingen, Tx. 78550	1	1	
So. States Danville Coop., Danville, Ky. 40422	1	1	
So. States Hardin Coop., Elizabethtown, Ky. 42701	3	3	
So. States Hopkinsville Coop., Hopkinsville, Ky.	4	4	
So. States LaGrange Coop., LaGrange, Ky. 40031	2	2	
So. States Somerset Coop., Somerset, Ky. 42501	1	1	
So. States Coop., Baltimore, Md. 21203	317	306	11
So. States Coop., Hay & Ingredient Div., Baltimore, Md. 41203	11	11	
So. States Coop., Richmond, Va. 23213	2	1	1
Specialty Feeds, Inc., Horn Lake, Ms. 38637	1	1	
Spencer-Well Feed Co., Winchester, Ky. 40391	39	34	5
Spencer Farm Service, Taylorsville, Ky. 40071	4	4	
Spencer Kellogg, Buffalo, N.Y. 14240	1	1	
A. E. Staley Manufacturing, Decatur, Il. 62525	2	2	
Star Kist Foods, Inc., Terminal Island, Ca. 90730	2	1	1
Strongheart Packing Co., Chicago, Il. 60604	1	1	
Strongheart Products Co., Kansas City, Ks. 66110	1	1	
Sturgis Milling Co., Sturgis, Ky. 42459	6	5	1
Summer Shade Roller Mills, Summer Shade, Ky. 42166	1	1	

TABLE 1 REPORT OF OFFICIAL FEED SAMPLES ANALYZED, 1968

For samples not passed see Table 2

NAME AND ADDRESS OF MANUFACTURER	Number of Samples Analyzed and Examined	Number of Samples Passed	Number of Samples Not Passed
Sunshine Feed Mills, Inc., Red Bay, Al. 35582	4	3	1
Sunshine Molasses Co., Somerset, Ky. 42501	2	2	
Supersweet Feeds, Div. International Mills, Kansas City, Missouri 64116	10	10	
Supreme Mills, Glasgow, Ky. 42141	45	44	1
D. B. Sutherland & Sons, Bloomfield, Ky. 40008	9	9	
Sweet Feed Mills, Inc., Bowling Green, Ky. 42101	8	8	
Swift & Co., Pet Foods, Chicago, Il. 60604	6	5	1
Swift & Co., National Stockyards, Il. 62071	3	2	1
Swift & Co. Oil Mill, Memphis, Tn. 38114	2	1	1
T & H Feed Service, Lebanon, Ky. 40033	3		3
Tabor Enterprises, Columbia, Ky. 42728	4	4	
Teater & Cassity, Nicholasville, Ky. 40356	3	3	
Thorbred Company, Inc., Waynesville, Oh. 45068	1	1	
Thurmonds Coal & Feed Co., Murray, Ky. 42071	3	3	
Tupelo Oil Mill, Inc., Tupelo, Ms. 38801	1	1	
Usen Products Co., Woburn, Ma. 01801	4	3	1
Valley Pet Foods, Div. of Best Foods, Oakdale, Pa. 15071	1	1	
Van Camp Sea Food, Long Beach Ca. 90812	1		1
Vets Div. of Perk Foods Co., Chicago, Il. 60610	3	2	1
Vylactos Labs, Inc., Syracuse, Ind. 46567	1	1	
Weisenbergers Mills, Midway, Ky. 40347	11	11	
West Tennessee Soya Mill, Inc., Tiptonville, Tn. 38257	14	14	
Western Grain Company, Birmingham, Al. 35201	1	1	
Whitewater Flour Mills, Whitewater, Ks. 67154	1	1	
R. L. Wiles Feed Mills, Inc., Nashville, Tn. 37201	3	3	
Williamstown Roller Mill, Williamstown, Ky. 41097	2	2	
Wilson & Co., Chicago, Illinois 60601	2	2	
Winn Milling Co., Greensburg, Ky. 42743	2	1	1
Wright Packing Co., Inc., Chandler, Ind. 47610	1		1
	2769	2583	186
		93%	7%

Samples are shown as "not passed" in Table 2 when extremely deficient or excessively above guarantee as follows:

Protein:	More than 2 units below guaranty Exceeds guaranty by 5 or more units
Fat:	More than 2 units below guaranty Exceeds guaranty by 3 or more units
Fiber:	Exceeds guaranty by more than 2 units
Invert Sugar:	10% lower than guaranty
Salt:	Varies from guaranty by plus or minus 2 units
Calcium:	More than 2 units below minimum guaranty Exceeds maximum guaranty by more than 2 units
Copper, Iron, Zinc:	± 40%
Sulfamethazine, Penicillin, Chlortetracycline:	± 50%
Phenothiazine, Sulfamethazine, Furazolidone, Arsanilic Acid, 3-Nitro-4- hydroxyphenyl arsonic Acid:	± 40%

TABLE 2 SAMPLES CLASSIFIED AS "NOT PASSED"

MANUFACTURER, ADDRESS AND BRAND	GUARANTEED	FOUND
Ade Farm Chemical Co., Inc., Tiskilwa, Il. 61368 Ade 37% Supplement Block	Crude Protein 40.0%	34.8%
	Calcium, Max. 6.0%	8.8%
Allen Products of Nebraska, Inc., Crete, Nb. 68333 Alpo, Scramble Dog Food	Crude Fat 5.0%	9.2%
Allen Products Co., Inc., Allentown, Pa. 18104 Alpo, Chicken & Chicken Parts Dog Food	Crude Fat 8.0%	17.1%
Allied Food Distributors, Atlanta, Ga. 30318 Brite-ize Cat Food	Crude Fat 2.0%	5.5%
Allied Mills, Inc., Libertyville, Il. 60048 Wayne 16 Hi-Flo Dairy Wayne Beef Balancer	Crude Fiber 9.0%	13.1%
	Crude Protein 52.0%	49.1%
	N.P.N. 26.0%	21.8%
	Crude Protein 52.0%	49.6%
	N.P.N. 26.0%	22.9%
	Crude Protein 40.0%	37.8%
	Crude Protein 32.0%	19.8%
	Crude Protein 40.0%	36.4%
	Crude Protein 52%	49.4%
	Crude Protein 52%	49.2%
	Crude Protein 20%	25.5%
	Penicillin 14.0 gm/T	25 gm/T
	Chlortetracycline 148.0 gm/T	68.1 gm/T
Wayne 52% Beef Balancer		
Wayne Pig Balancer Med.		
Topper Cattle Supplement Med.		
Wayne Hog Supplement		
Wayne 52% Beef Balancer Med. M-69		
Wayne 52% Beef Balancer Med. M-89		
Wayne Cattle Cubes		
Wayne Hog Balancer Med. M-64		
Wayne Pig Balancer Med.		
Anderson & Spilman, Danville, Ky. 40422 A & S 16% Dairy Feed A & S 16% Dairy Feed A & S 16% Dairy Feed	Crude Fiber 8.0%	10.6%
	Crude Fiber 8.0%	10.4%
	Crude Fiber 8.0%	10.1%
Astor Products, Inc., Jacksonville, Fla. 32203 Click Cat Food	Crude Fat 2.0%	5.3%
Aubrey Feed Mills, Inc., Louisville, Ky. 40204 Red A Meat Meal Tankage Red A Dog Food Red A Swine Wormer Pellets Red A Special Dog Food	Crude Protein 60.0%	55.8%
	Crude Fat 6%	13.2%
	Piperazine 0.60%	0.35%
	Crude Protein 24.0%	20.6%
Auburn Mills, Inc., Auburn, Ky. 42206 Leader Mixed Feed	Crude Protein 14.0%	11.5%
Bagdad Roller Mills, Bagdad, Ky. 40003 Rocket Age 40% Hog Concentrate Rocket Age 40% Hog Concentrate Rocket Age 20% Dairy Feed Rocket Age Hog Concentrate, Pellets Rocket Age 17% H.E. Layer Ration Med. Rocket Age 45% Ruminant Concentrate Rocket Age 17% H.E. Layer Ration Med.	Crude Fat 4.0%	7.2%
	Crude Fat 4.0%	7.5%
	Crude Protein 24.0%	31.5%
	Crude Protein 40.0%	36.9%
	Arsanilic Acid .01%	.0025%
	Crude Protein 45.0%	40.0%
	Crude Fiber 6.5%	7.3%
	Arsanilic Acid 0.01%	0.0035%
B. A. Bernard & Co., Inc. Camden, N. J. 08104 Trim Chicken Dog Food	Crude Fat 6.0%	10.4%
Blue Barn Dog Food Co., New Albany, Ind. 47150 Blue Barn Meal Dog Food Blue Barn Meal Dog Food	Crude Fat 7.0%	12.3%
	Crude Fat 7.0%	10.8%
Blue River Feed Mills, Inc., Edinburg, Ind. 46124 Blue River Feeds Dairy Heifer Suppl. Med. Beef Shake 44	Phenothiazine 0.44%	0.045%
	Crude Protein 44.0%	49.1%
Bryant & Crume Milling Co., Caneyville, Ky. 42721 Gold Medal 18% Hog Grower Med. Gold Medal Dairy Concentrate	Crude Protein 18.0%	14.8%
	Min. Salt 4.75%	2.7%

TABLE 2 SAMPLES CLASSIFIED AS "NOT PASSED"

MANUFACTURER, ADDRESS AND BRAND	GUARANTEED	FOUND
Carey Salt Company, Hutchinson, Ks. 67501 Trace Min	Iron 0.20% Manganese 0.025% Zinc 0.005%	0.35% 0.40% 0.031%
Carnation Co., Los Angeles, California 90036 Friskies Horse Meat with Gravy Friskies Cat Food, Chicken Flavor	Crude Fat 4.0% Crude Fat 2.0%	8.3% 5.7%
Central Soya Co., Inc., Ft. Wayne, Ind. 46802 Master Mix 38% Milk Master Concentrate Master Mix 50% Milk Master Master Mix 35% Hog Concentrate Master Mix Gro-Getter Conc. Med. Master Mix Steer Mixer, Conc. Master Mix Hog Finisher Conc. 889 Med. Master Mix Sweet Bulk-N-Flakes Master Mix Pig Grower Conc. Med. Master Mix 44% Solvent Extr. Soybean Meal	Crude Protein 38.0% Crude Protein 50.0% Crude Fiber 2.0% Crude Protein 40% Crude Protein 40% Crude Protein 40% Arsanilic Acid 0.1% Crude Fiber 18.0% Streptomycin 32.5 gm/T Crude Protein 44.0%	43.3% 46.0% 6.3% 36.7% 36.9% 29.6% 0.045% 22.1% 57.2 gm/T 50.5%
Central Soya of Clinton, Inc., Clinton, Ky. 42031 Gilt Edge 37% Suppl. Block	Crude Protein 37.0% Copper 0.01% Manganese 0.136% Zinc 0.121%	27.4% 0.0042% 0.054% 0.008%
Community Milling Co., Irvington, Ky. 40146 Our Pride Dairy Feed	Crude Protein 16.0%	12.7%
Custom Feed Mill, Morganfield, Ky. 42437 C.M. 50-125 Mix Conc. Med. C.M. 42% Beef Supplement	Oxytetracycline 100 gm/T Crude Protein 42.0%	192 gm/T 47.2%
Duncan-McFarland Farm Service, Lawrenceburg, Ky. 40342 Dairy Feed	Crude Protein 16.0%	11.4%
John W. Eshelman & Son, Lancaster, Pa. 17604 Starter & Grower Med 111 G	Crude Protein 20.0%	17.5%
Fabro, Inc., Atlanta, Ga. 30318 Switch to Switch Cat Food	Crude Fat 2.0%	7.1%
Fabro of Ga., Inc., Atlanta, Ga. 30318 Switch Cat Food	Crude Fat 2.0%	5.6%
Famous Feed Mills, Nashville, Tn. 37201 Famous 44% Dairy Supplement Famous 44% Dairy Supplement	Crude Protein 44.0% N.P.N. 20.96% Crude Protein 44.0% N.P.N. 20.96%	40.0% 16.5% 41.6% 16.1%
Farmers & Merchants Milling, Brooksville, Ky. 41004 Mixed Feed	Crude Protein 14.0%	11.1%
Frosty Morn Meats, Clarksville, Tn. 37041 Meat and Bone Meal	Crude Fat 8.0%	13.9%
Fort Negley Mills, Nashville, Tn. 37203 Luxury 54% Feed Supplement	Crude Protein 54.0% N.P.N. 42.0%	66.0% 47.6%
Henry Fruechtenicht Co., Louisville, Ky. 40202 Producer Beef Supplement Producer 20% Layer Producer 44% Dairy Concentrate Producer Hi NRG Producer 44% Dairy Concentrate Producer Special Dairy Producer 44% Dairy Concentrate	Crude Protein 32.0% Crude Protein 20% Crude Protein 44% Crude Protein 16% Crude Protein 44% Crude Protein 16% Crude Protein 44.0%	38.1% 25.8% 40.1% 23.9% 50.1% 13.1% 40.6%

TABLE 2 SAMPLES CLASSIFIED AS "NOT PASSED"

MANUFACTURER, ADDRESS AND BRAND	GUARANTEED	FOUND
Fruen Milling Co., Minneapolis, Mn. 55403 Sho-Horse Horse Supplement	Crude Protein 20.0% Iron 0.04%	28.8% 0.30%
General Packing Co., Waynesville, Ohio 45068 Down Boy Dog Food	Crude Fat 2.0%	7.6%
The Great A & P Tea Co., Inc., Brockport, N.Y. 14420 Medallion Horse Meat Dog Food	Crude Fat 6.0%	14.8%
Harpeth Mills, Nashville, Tennessee 37203 Peerless 40% Hog Supplement Pellets	Crude Protein 40.0%	34.7%
Hill Packing Co., Topeka Kansas 66601 Hills Dog Food Special Pack 16% Protein	Crude Fat 4.0%	7.6%
Honeggers & Co., Inc., Fairbury, Il. 71639 Economy Special Dairy Supplement 308	Crude Protein 32.0% N.P.N. 15.0%	39.1% 19.4%
Kal Kan Foods, Inc., Los Angeles, California 90058 Kal Kan Petol G-7729 Bits-Tuna-Liver Kal Kan Tuna-Chicken Parts Kal Kan Chicken Parts with broth for Dogs & Cats	Crude Fat 2.5% Crude Fat 3.0% Crude Fat 4.5%	9.2% 8.9% 14.2%
Keco Milling Co., McKenzie, Tennessee 38201 Dixie Treat 40% Dairy	Crude Protein 40.0%	35.3%
Ky. Animal By-Products, Russellville, Ky. 42276 50% Meat & Bone Meal	Crude Protein 50%	47.9%
Ky. By-Products Corp., Louisville, Ky. 40211 Dri-Molass Dri-Molass	Crude Fiber 8.0% Sugar, Invert 42.0% Crude Fiber 8.0% Sugar, Invert 42.0%	12.4% 37.2% 11.5% 37.7%
Klarer of Kentucky, Louisville, Ky. 40201 Meat Meal Tankage	Crude Protein 60.0%	56.9%
Lowes Feed & Hatchery, Bowling Green, Ky. 42101 Lowes Chick Starter Medicated Lowes Pig Grower Medicated Lowes Milk Flo Lowes Pig Grower Med.	Arsanilic Acid 0.01% Penicillin 25.0 gm/T Arsanilic Acid 0.01% Crude Fiber 6.0% Arsanilic Acid 0.01%	0.0146% 12.3 gm/T 0.0007% 8.5% 0.00059%
Livestock Industries, Inc., Park City, Ky. 42160 Meat & Bone Meal	Crude Fat 8.0%	14.6% Not Registered
LaCrosse Milling Co., Cochrane, Wisconsin 54622 Pulverized White Oats	Crude Protein 11.0% Crude Fiber 13.5%	8.0% 15.4%
Mayfield Sweet Feed Mill, Mayfield, Ky. 42066 State Leader 32% Pig & Sow Supplement	Crude Protein 32.0%	29.3%
Mid-South Feeds, Inc., Nashville, Tn. 37209 Mid-South 32% Dairy Concentrate	Crude Protein 32.0% N.P.N. 10.48%	40.7% 17.8%
Miller Milling Service, Bowling Green, Ky. 42101 Alfalfa Meal	Crude Protein 13.0%	10.6%
Moorman Manufacturing Co., Quincy, Il. 62302 Moormans Premix Fat Cattle # 2M	Crude Protein 80.0%	88.3%
Morgantown Feed Mill, Morgantown, Ky. 42261 Flavo 20% Laying Mash	Crude Protein 20.0%	17.1%
Nutrena Mills, Inc., Minneapolis, Mn. 55402 Nutrena Beefcake 34	Crude Protein 34.0%	40.4%

TABLE 2 SAMPLES CLASSIFIED AS "NOT PASSED"

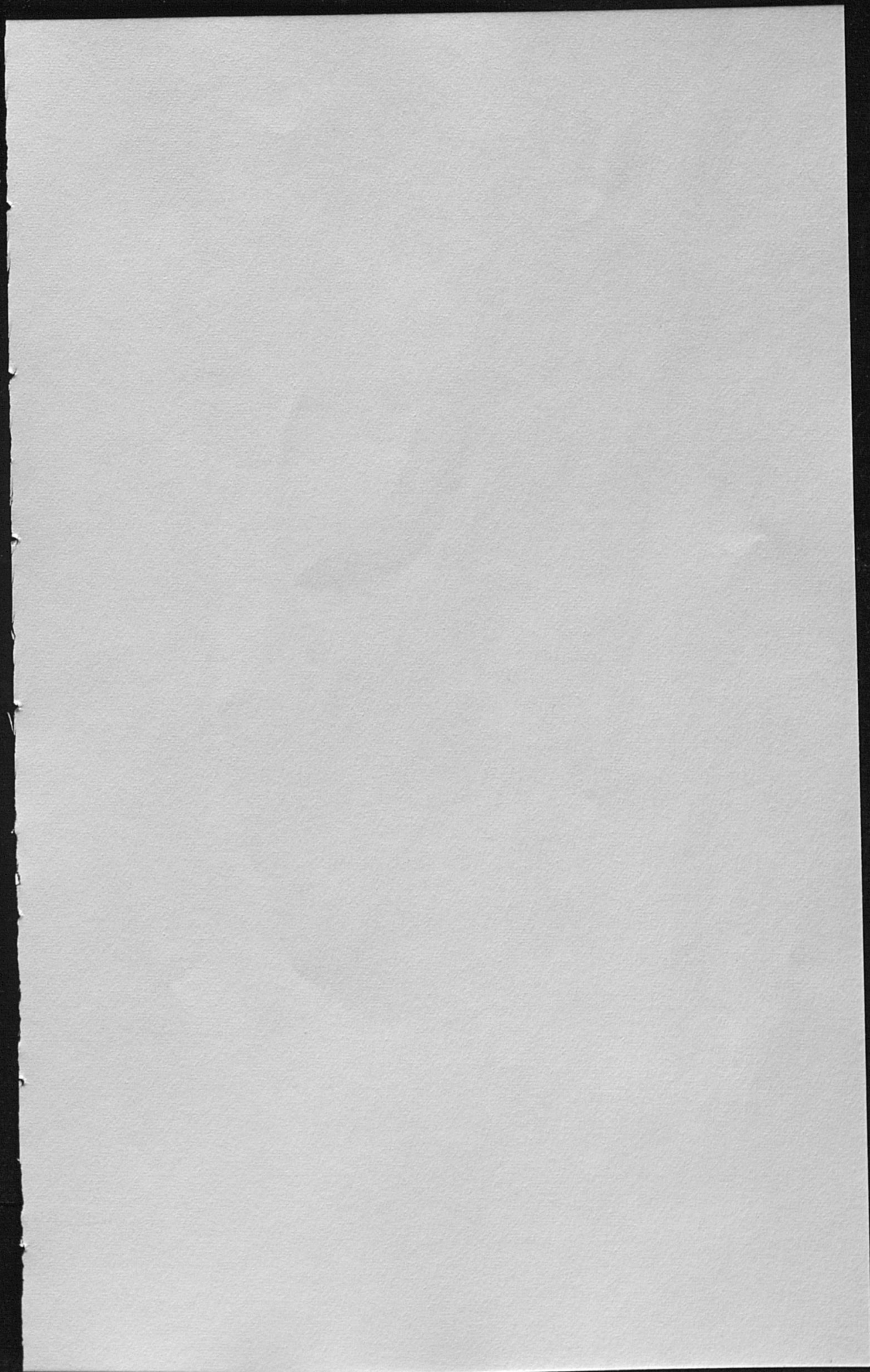
MANUFACTURER, ADDRESS AND BRAND	GUARANTEED	FOUND
Nutrena Shoat 40 MC (U) Medicated Nutrena Sweet Flow Dairy Concentrate	Crude Protein 40.0% Salt, Max. 2.75%	46.1% 11.3%
Owensboro Milling Co., Owensboro, Ky. 42301 Trutest Beef Supplement Trutest Heifer Suppl. MGA Medicated Trutest Pig Starter Medicated	Crude Protein 44.0% Salt, Max. 5.5% Sulfamethazine 0.011%	41.4% 8.9% 0.0016%
Owensboro Grain Co., Inc., Owensboro, Ky. 42301 Ograco Soybean Meal	Crude Protein 44.0%	50.2%
Orleans Canning Co., Chicago, Il. 60603 Orleans Dog Food A & P Dog Food	Crude Fat 6.0% Crude Fat 6.0%	12.4% 11.0%
Chas. Pfizer & Co., Inc., New York, N. Y. 10017 Sp CRC 50 125A	Oxytetracycline 4000.0 gm/T	7120.0 gm/T
Pan Pacific Fisheries, Inc., Terminal Island, Ca. 90731 Cat Food Tuna	Crude Fat 2.0%	8.8%
Pan American Mills, Bowling Green, Ky. 42101 Mixed Feed Mixed Feed Corn By-Product	Crude Fat 4.0% Crude Fat 4.0% Crude Fiber 6.0%	7.7% 7.9% 8.8%
Quaker Oats Co., Chicago, Illinois 60654 Ful-O-Pep 14 Feeder Pig Bracer Ful-O-Pep Dairy Concentrate M Ful-O-Pep Cattleizer Dairy M Ful-O-Pep Milking 40 Pellets M Puss' N Boots Cat Food Ful-O-Pep Cattleizer Dairy Concentrate M	Penicillin 50 gm/T Crude Fat 8.0% Crude Fat 8.0% Crude Protein 40.0% Crude Fat 3.0% Crude Fat 8.0%	19.3 gm/T 12.2% 13.4% 37.7% 9.9% 11.7%
Ralston Purina Co., St. Louis, Mo. 63199 Purina Hog Chow 3N B Med. Purina Sow Chow 2901 Purina Pork Startena Purina Pig Startena Purina Pura Lasses Purina Commercial Hog Finisher Med. Purina Special Steer L5 Purina Pork Startena 16 Med. Purina Hog Chow B 3N Med. Purina Special Steer Med. Purina Special Steer Fatena (R) L5 Purina Dog Meal Purina Dairy Concentrate Purina Dairy Concentrate G 44 Purina Farrowing Chow Purina Hog Supplement (H) 40% Purina Special Steer Fatena R L5 Purina Pig Growena Med. Purina Broiler Chow Finisher # 1 Med. Purina Meal Steer Fatena Purina Hog Supplement Purina Cat Food Purina Beef & Eggs Purina Tuna 1 Purina Sea Nip Dinner Purina Special Steer Fatena (5S) Purina Special Steer Fatena Purina Hog Chow (B) 3N Med. Purina Special Steer Fatena L5	3-Nitro-4 0.025% Crude Fiber 3.0% Penicillin 50 gm/T Penicillin 50 gm/T Sulfamethazine 0.011% Crude Fiber 8.0% Sugar, Invert 42.0% 3-Nitro-4 0.005% Crude Protein 50.0% Sulfamethazine .011% 3-Nitro-4 0.025% Crude Protein 50.0% Crude Protein 50.0% N.P.N. 30.0% Crude Fat 9.0% Crude Fiber 4.5% Crude Protein 32.0% Crude Fiber 10.0% Crude Protein 44.0% Furazolidone 0.0165% Crude Protein 40.0% Crude Protein 50.0% 3-Nitro-4 0.005% Crude Fat 4.5% Crude Protein 65.0% Crude Protein 40.0% Crude Fat 3.0% Crude Fat 7.5% Crude Fat 2.0% Crude Protein 30.0% Crude Protein 40.0% Crude Protein 65.0% Oxytetracycline 50.0 gm/T Crude Protein 50.0%	0.0112% 6.2% 20.9 gm/T 17.4 gm/T 0.0063% 11.1% 36.8% 0.0025% 46.5% 0.0058% 0.00310% 43.1% 25.1% 4.4% 6.6% 5.4% 23.2% 12.8% 38.0% 0.0237% 37.4% 47.7% 0.0 11.5% 57.3% 37.2% 6.3% 11.8% 6.1% 35.2% 45.1% 70.5% 21.8 gm/T 56.6%

TABLE 2 SAMPLES CLASSIFIED AS "NOT PASSED"

MANUFACTURER, ADDRESS AND BRAND	GUARANTEED	FOUND
Purina Dairy Chow 16 Coarse Purina Cow Chow Concentrate 50	Crude Protein 16.0% Crude Protein 50.0%	22.2% 47.6%
Rival Pet Foods, Chicago, Illinois 60632 Rival Dog Food with Gravy	Crude Fat 5.0%	8.2%
Allen Robertson & Co., Louisville, Ky. 40202 Farm-R-Choice Theravite Vitamin-Min (P) Med. Farm-R-Choice Theravite Vitamin-Min (U) Farm-R-Choice Theravite Vitamin Min	Penicillin 160.0 gm T Crude Protein 81.8% Calcium, Max. 22.0%	0.0 77.8% 24.4%
G. P. Rose & Co., Inc., Nashville, Tn. 37211 Roses' Dog Food Roses' Triumph Dog & Cat Food	Crude Protein 25.0% Crude Fat 2.0%	30.3% 6.7%
Southern States Coop., Baltimore, Md. 21203 S.S. 40% Poultry Suppl. Med. S.S. Super Blend 65 S.S. 40% Poultry Suppl. Med. S.S. Multi Blend 32 S.S. 40% Pork Maker S.S. Super Laying Mash Med. S.S. Super Blend S.S. 40% Poultry Suppl. Med. S.S. Super Blend 65 S.S. Super Hog Suppl. S.S. Hi-Blend Suppl.	Arsanilic Acid 0.035% Crude Protein 65.0% Arsanilic Acid 0.035% Crude Protein 32.0% Crude Protein 40.0% Crude Protein 22.0% Arsanilic Acid .0166% Crude Protein 65.0% Calcium, Max. 5.0% Arsanilic Acid .035% Crude Protein 65.0% Crude Fat 5.0% Calcium, Max. 15.0% Crude Protein 44.0% Salt, Min. 5.0%	0.002% 62.1% 0.0164% 28.5% 37.5% 19.2% .0076% 59.4% 6.3% .0053% 59.2% 8.4% 16.3% 41.6% 2.9%
Southern States Coop., Richmond, Va. 23213 S.S. 37 Feed Block	Salt, Max. 14.0%	Contained appr. 5% Feather Meal Not Listed ingredient. 18.6%
Spem-Well Feed Co., Winchester, Ky. 40391 Thoroughbred 16% Sweet Dairy Feed Thoroughbred 24% Sweet Dairy Feed Thoroughbred Starter & Grower All-Mash 20 Med. Thoroughbred Layer Mash "20" Thoroughbred Starter & Grower All Mash"20" Med.	Crude Protein 16.0% N.P.N. 5.24% Crude Protein 24.0% Crude Protein 20.0% Crude Protein 20.0% Crude Protein 20.0%	22.6% 8.9% 21.7% 16.8% 15.9% 17.3%
Star Kist Foods, Inc., Terminal Island, Ca. 90730 9-Lives Kidney	Crude Fat 7.0%	14.3%
Sturgis Milling Co., Sturgis, Ky. 42459 Hoppys Pig Concentrate, Med.	Penicillin 100.0 gm/T	41.9 gm/T
Sunshine Feed Mills, Inc., Red Bay, Alabama 35582 Kracklin Dog Food	Crude Fat 8.0%	11.5%
Supreme Mills, Glasgow, Ky. 42141 Supreme 17½% Pig & Hog Feed Med. Supreme 15% Hog Fattener	Crude Protein 17.5% Crude Protein 15.0%	22.7% 20.2%
Swift & Co., National Stockyards, Il. 62071 Meat Meal Tankage Meat & Bone Meal 41% Solvent Extracted Cottonseed Meal	Crude Protein 60.0% Crude Fat 8.0% Crude Protein 41.0%	65.9% 12.0% 47.0%
T & H Feed Service, Lebanon, Ky. 40033 Marco 16% Dairy Feed Marco 16% Dairy Feed Marco 16% Dairy Feed	Salt, Min. 4.0% Salt, Min. 4.0% Salt, Min. 4.0%	1.3% 1.1% 1.5%

TABLE 2 SAMPLES CLASSIFIED AS "NOT PASSED"

MANUFACTURER, ADDRESS AND BRAND	GUARANTEED	FOUND
Usen Products Co., Woburn, Mass. 01801 Tabby Cat Food Tabby Meat & Fish	Crude Fat 6.0% Crude Fat 3.0%	12.4% 6.3%
Vets Div. of Perk Foods, Chicago, Illinois 60610 Vet Burger Dog Food	Crude Fat 5.0%	8.1%
Van Camp Sea Food, Long Beach, California 90812 Capt. Kit Tuna	Crude Fat 2.0%	12.0%
Winn Milling Co., Greensburg, Ky. 42743 Hominy Feed	Crude Fiber 6.0%	8.9%
Wright Packing Co., Chandler, Ind. 47610 Wrights 42% Protein Feeding Tankage	Crude Protein 42.0%	49.1%



4M--4-69