

**WATER FACILITIES:** The Middlesborough Water Co. gravity system. Storage reservoir supplied by mountain streams, located 1/2 miles South of City at an elevation of 270 ft above the same. Iron stand pipe located one mile South of City 30 ft high, 35' diam with capacity one million gallons. Supplied from Pumping station. Equipped with two Edw. P. Ellison & Co's duplex pumps. Eng. of three millions gallons each capy per 24 hours. Water pipes have diam. of 4", 6", 10", 12" and 20". 35 clock hydrants. Average pressure 100 lbs. per sq. inch. System installed 1891.

**FIRE DEPT:** One steam fire eng. (Not in working order) One hose cart & about 2500 ft. of hose in good condition. No organized Fire Department.

Map Division  
DEC 3 1907  
Library of Congress

LIBRARY OF CONGRESS  
The Henry Hooper  
WEST 101 1007  
1143 1747  
11445

# INDEX

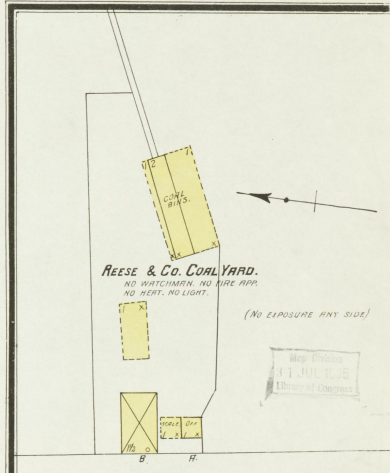
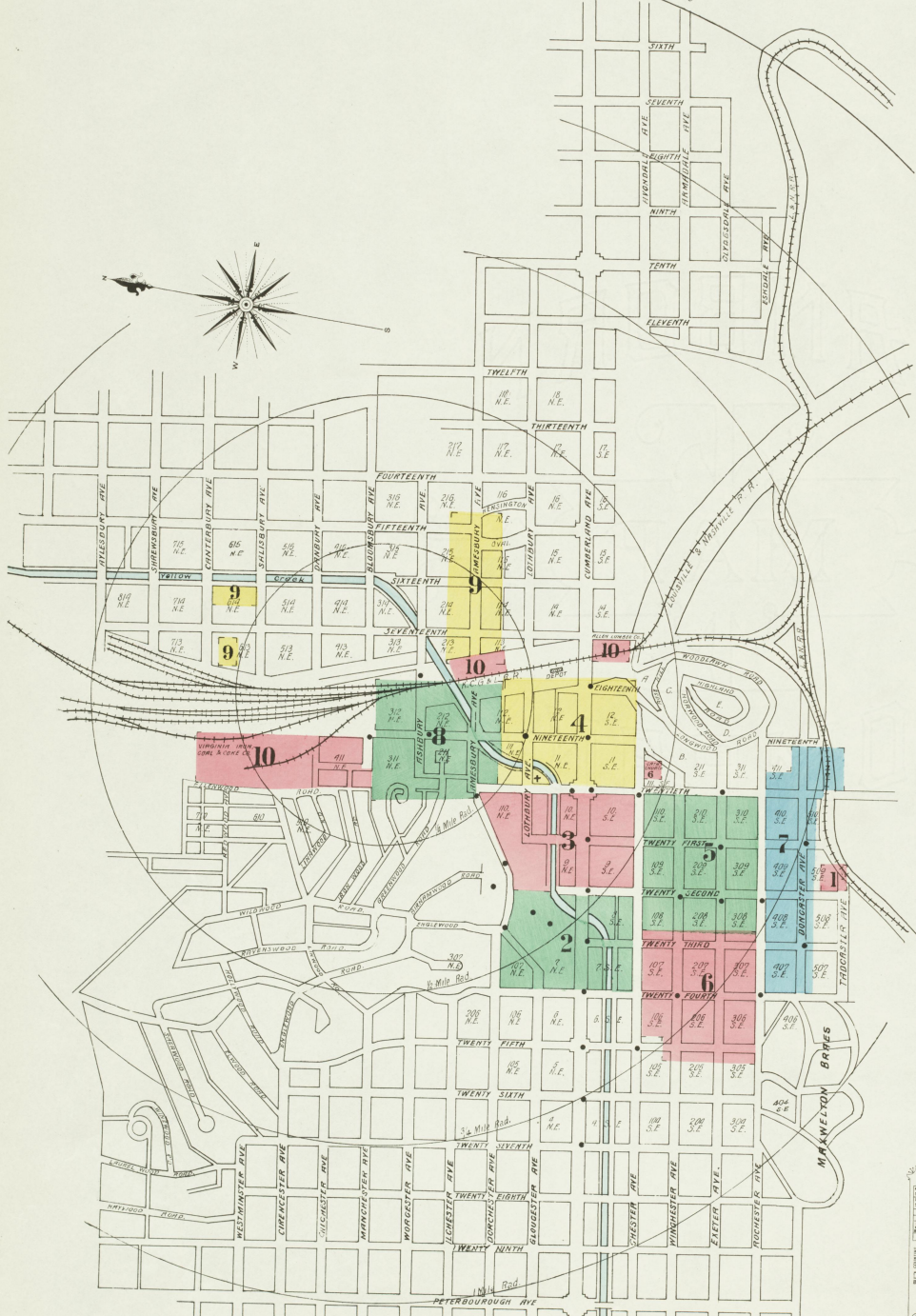
## STREETS

STREETS	INDEX
Amesbury Ave.	201-212
Asbury "	101-135
Bloomsbury Ave.	201-238
Canterbury Ave.	105-110
Chester Ave.	201-232
Cumberland Ave.	101-142
Danbury Ave.	19-24
Dorchester Ave.	101-109
Edgewood Road	2 & 3
Exeter Ave.	501-533
Fifteenth, near Amesbury Ave.	9
Gloucester Ave.	201-207
Ironwood Ave.	15-21
Kensington Oval	1-7
Lothbury Ave.	201-224
Nineteenth	101-143
Rochester Ave.	201-217
Salisbury Ave.	203-07
Seventeenth	15-32
Sixteenth, near Amesbury Ave.	9
Twentieth	15-42
Twenty-fifth	148-172

## SPECIALS

SPECIALS	INDEX
Alford Block	2
Antique, The	3
Allen Lumber Co	10
Asbury, The	8
Ball, J. R., Distillery	2
Baptist Church	5
Catholic Church	6
City Jail	4
Cumberland Hotel	4
Elk's Club	2
Fire Department	4
First Christian Church	6
Fraxee Block	2
Huber Hotel	4
Marine Theatre	3
Methodist Episcopal Church	5
Middlesborough Elec. L. H. & P. Co	10
Hotel	2
Lumber Co., Corn Mill	8
New South Brewing & Ice Co	9
Pioneer Iron Works	10
Presbyterian Church	5
Public School	3
Reese & Co., Coal Yard	1
St. Mary's Episcopal Church	3
Town Hall	4
Virginia Iron, Coal & Coke Co., Roller Mills	10

NOTE—House numbers given are arbitrary.

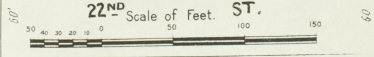


**KEY**

STABLE	SHED
BUILDINGS COLORED YELLOW ARE FRAME	BRICK
RED	STONE
BLUE	IRON
BROWN	ADOB
GREEN	SPECIALS

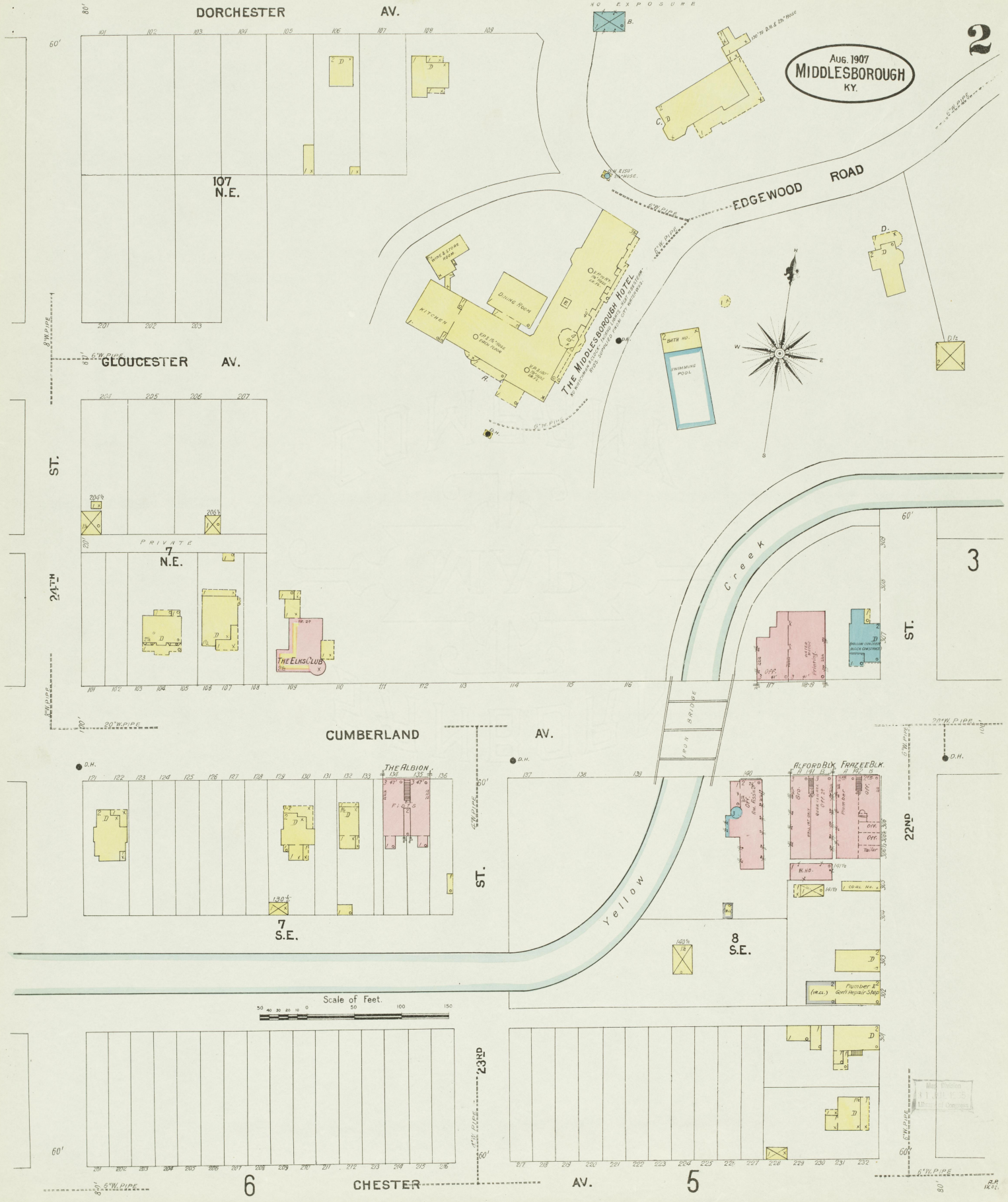
① INDICATE RELATIVE HEIGHTS  
★ FIRE STATION, AS SHOWN ON KEY MAP.  
+ ALTERNATE STREET NUMBERS ARE ACTUAL.  
- CONSECUTIVE STREET NUMBERS ARE ARBITRARY.

22ND Scale of Feet. ST.



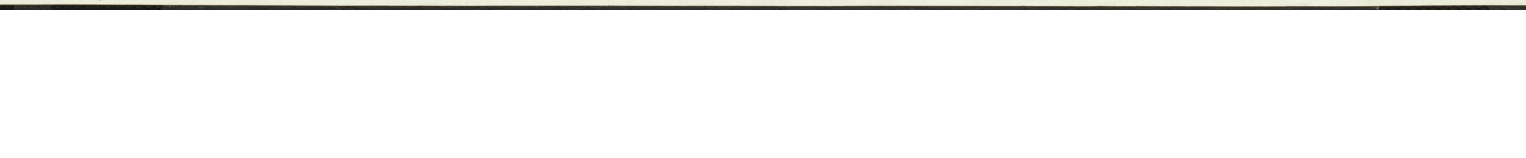
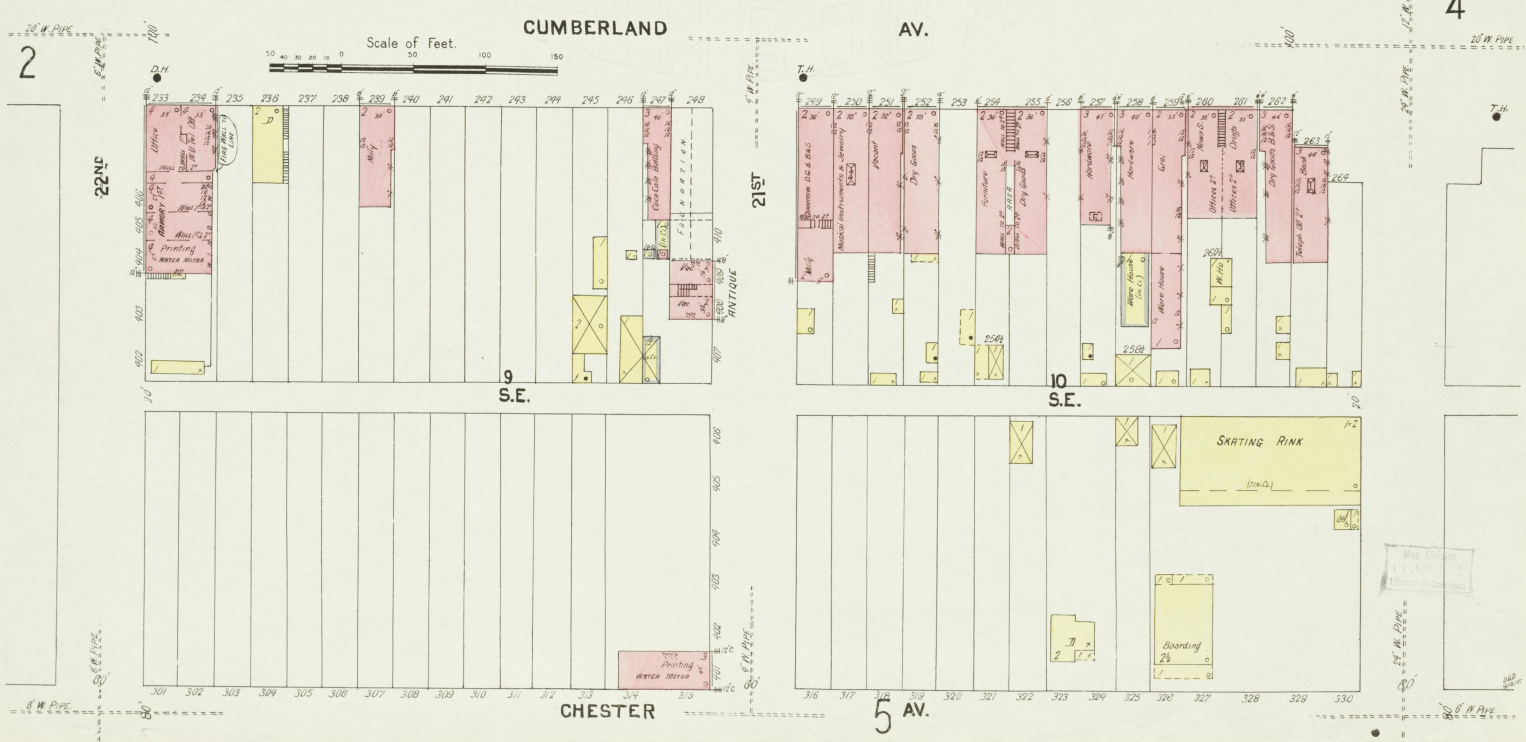
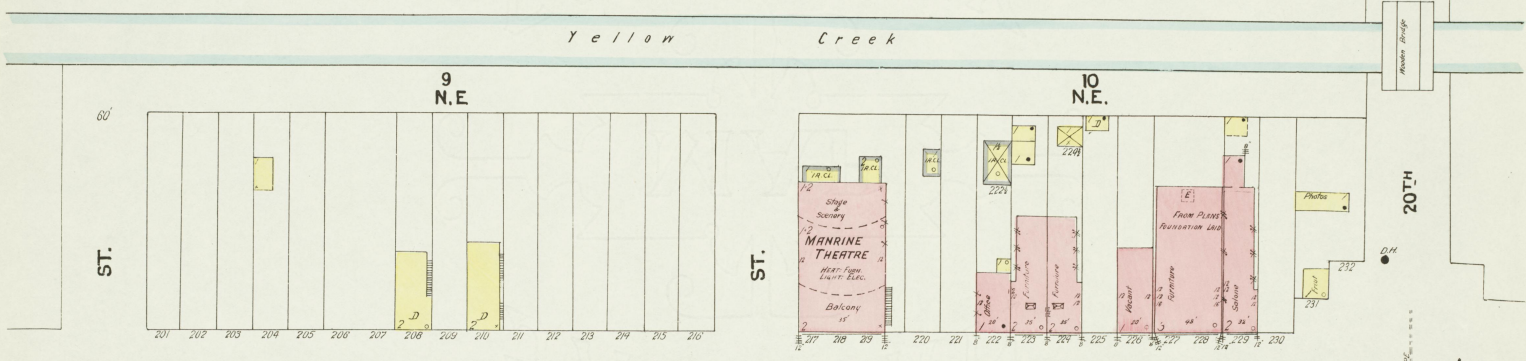
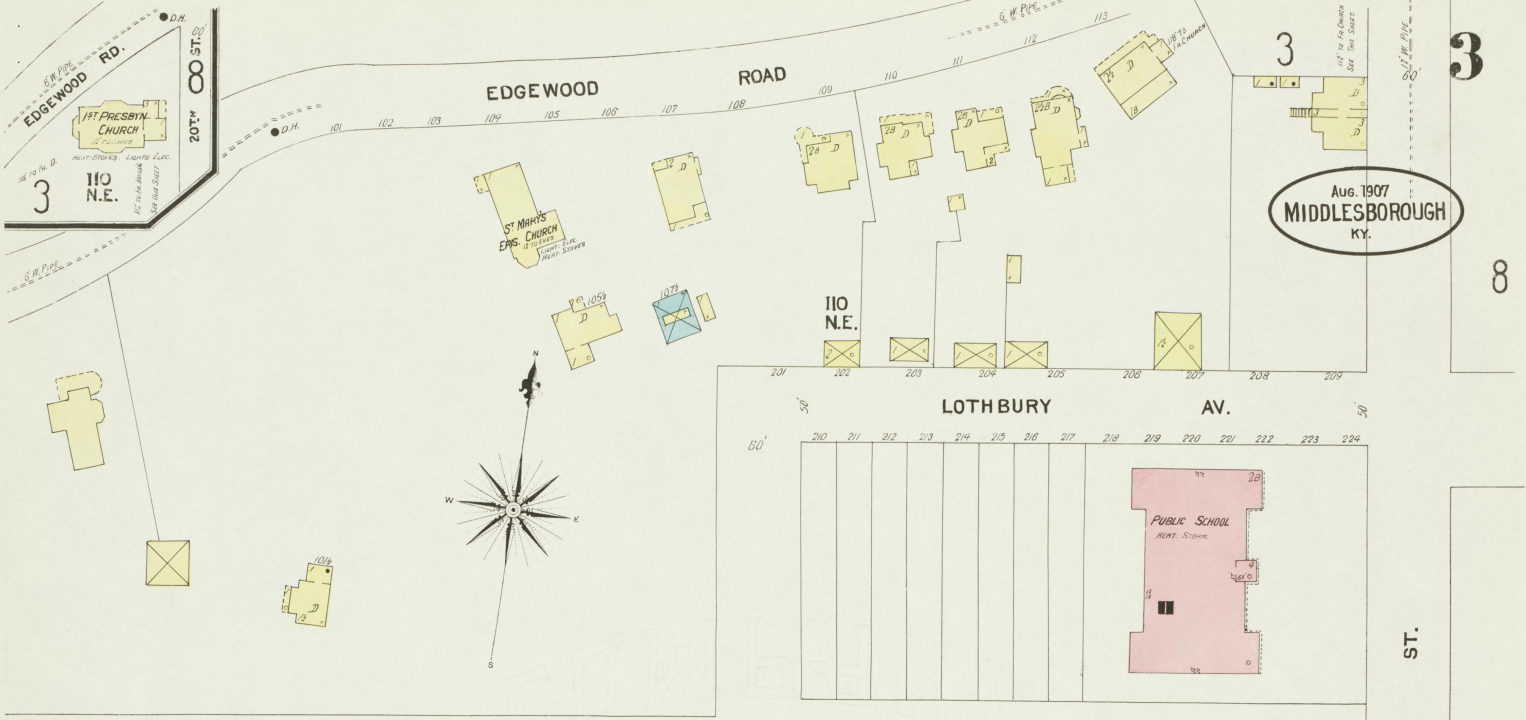


Aug. 1907  
MIDDLESBOROUGH  
KY.

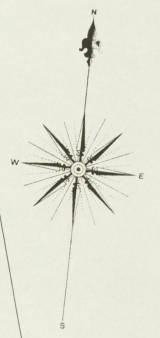




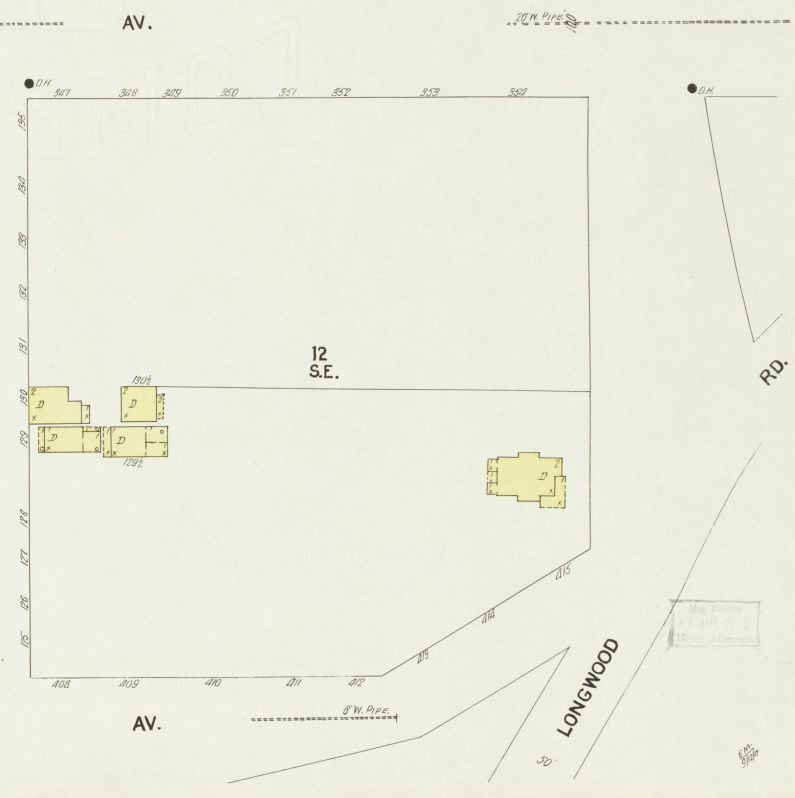
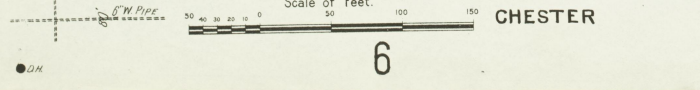
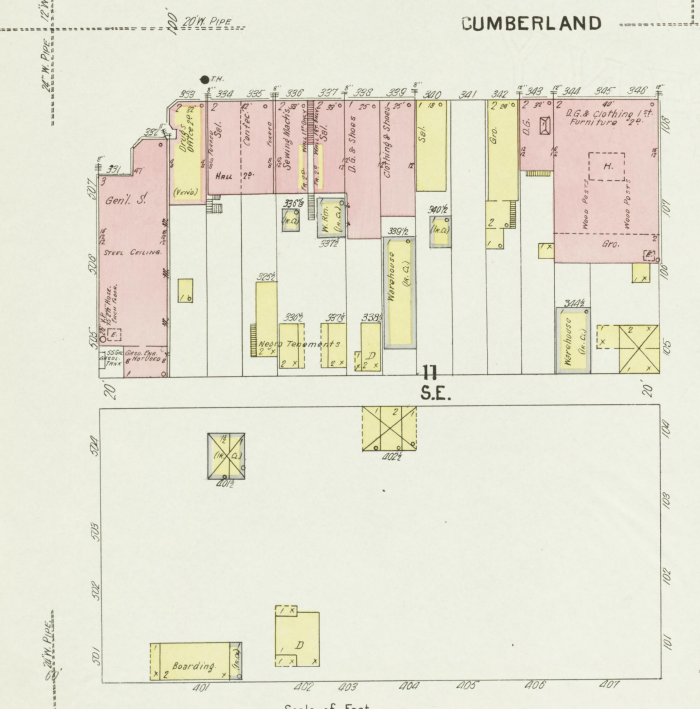
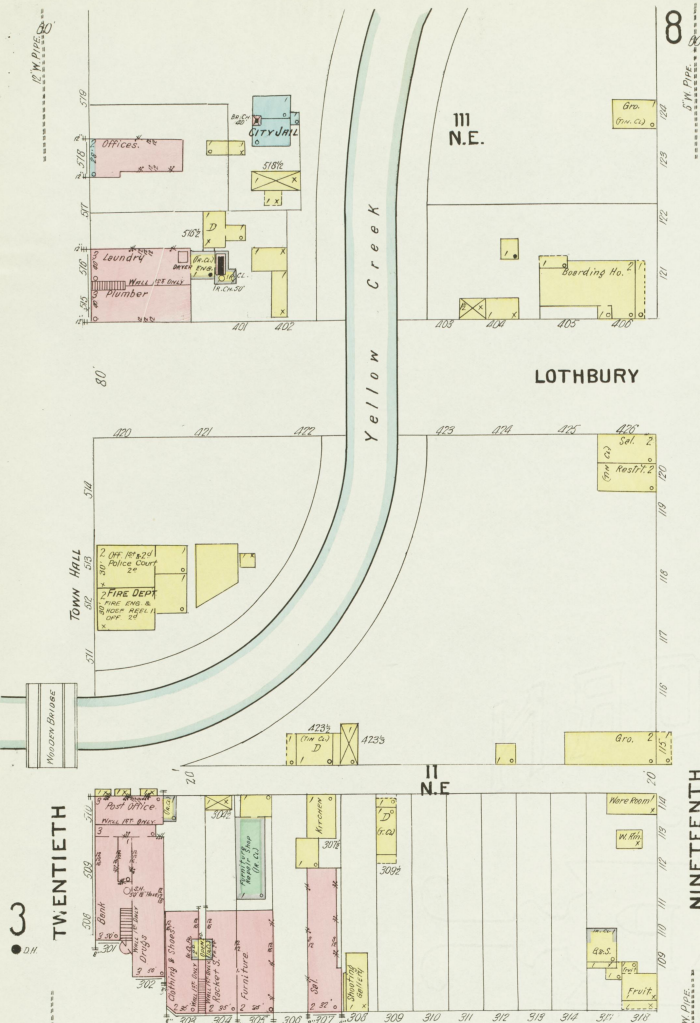
Aug. 1907  
MIDDLESBOROUGH  
KY.







8' W. PIPE

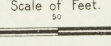
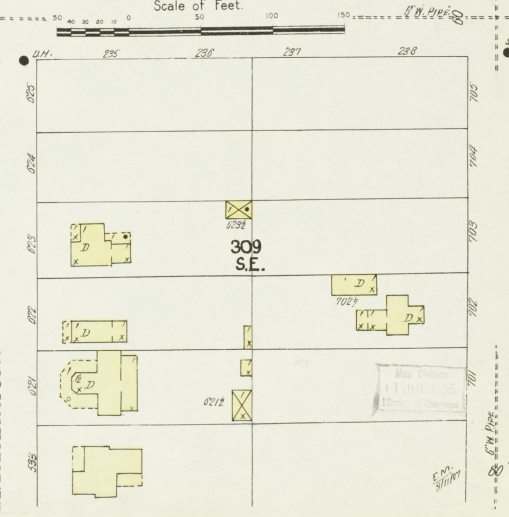
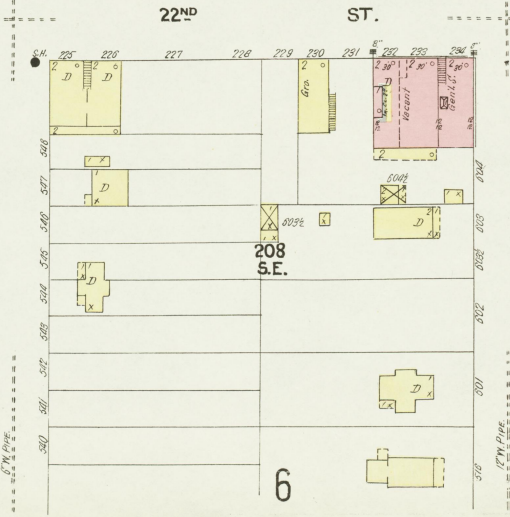
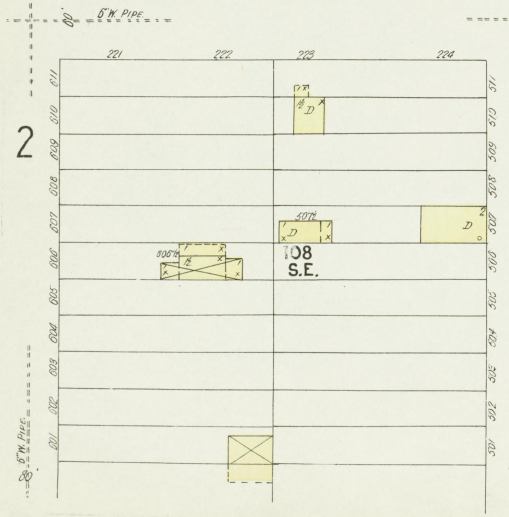
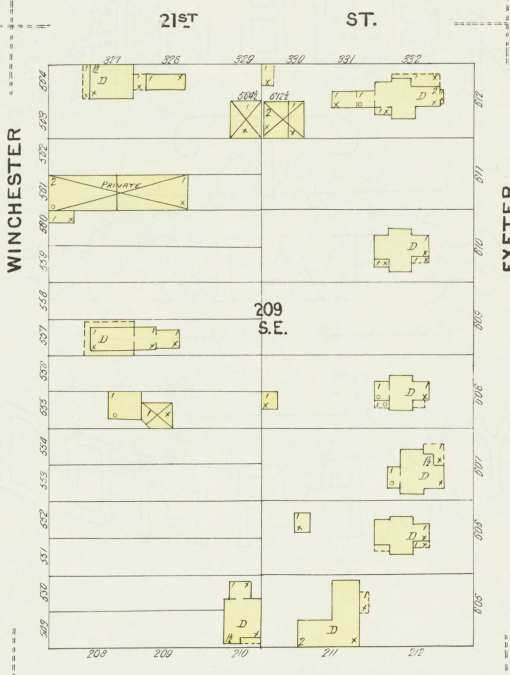
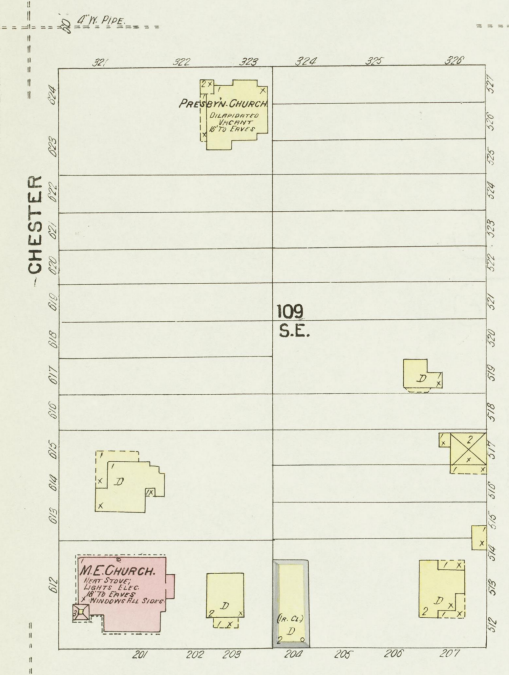
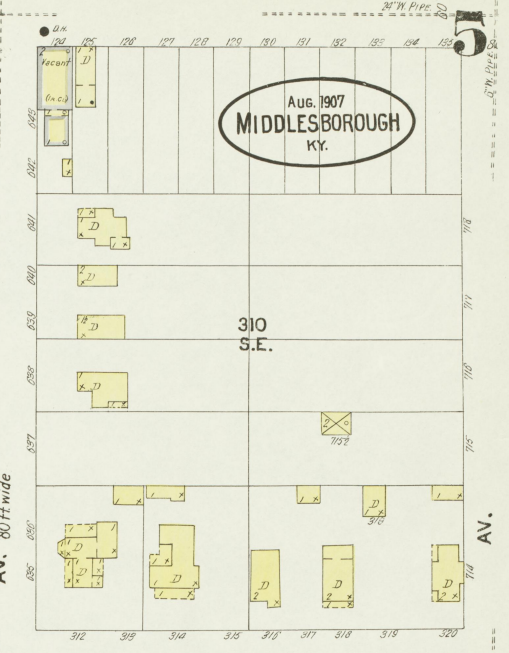
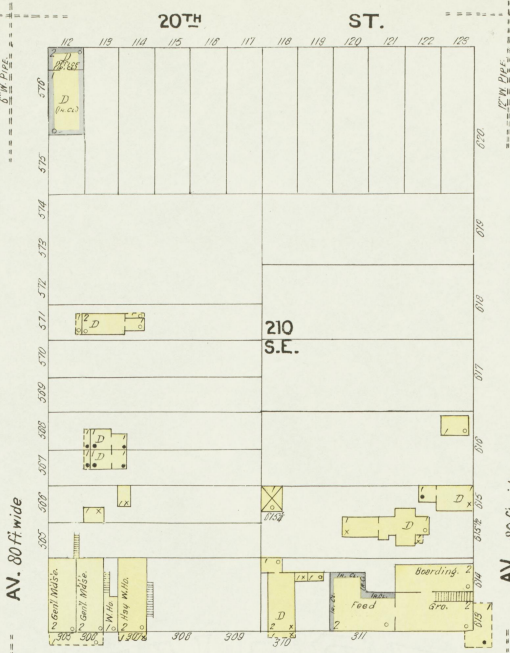
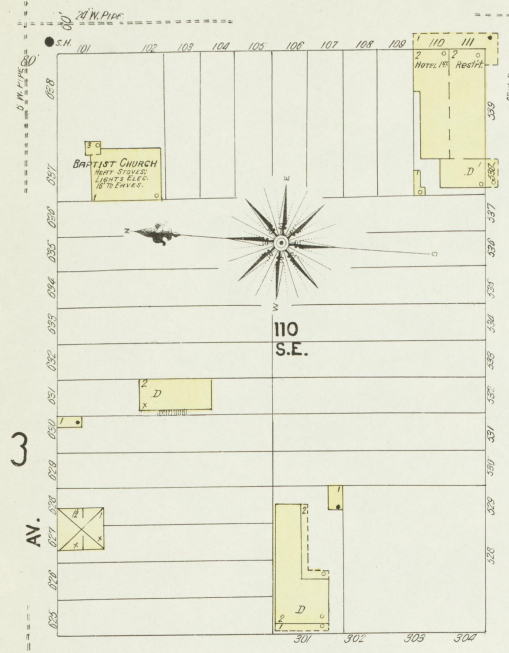


RD.

LONGWOOD

Map Division  
J. M. T. B.  
1907





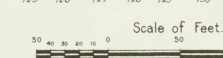
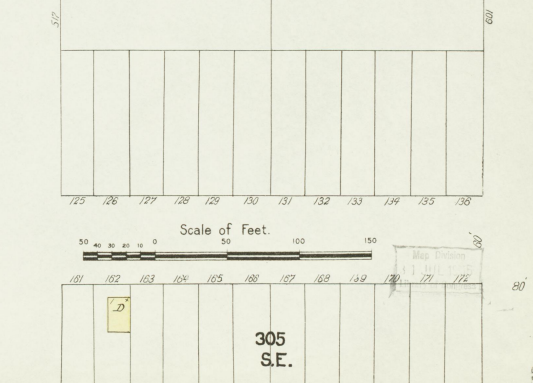
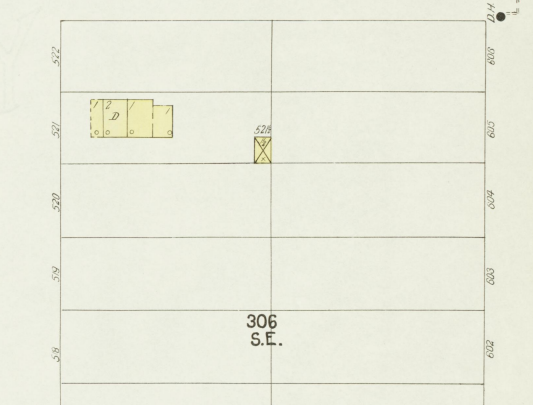
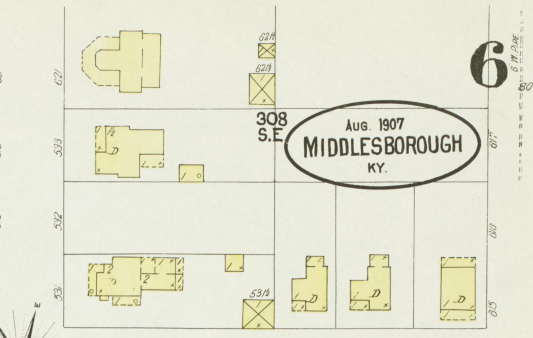
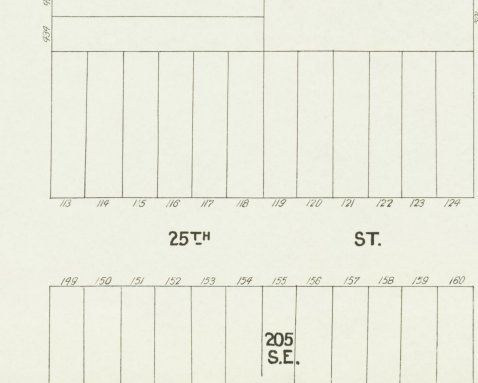
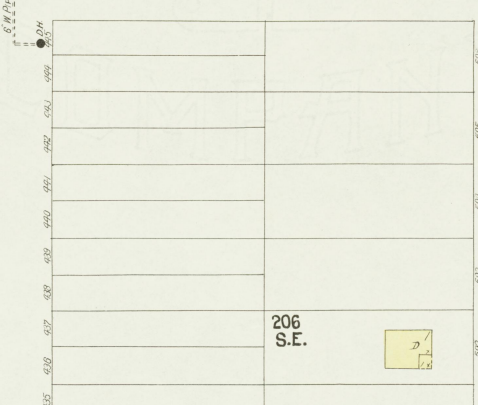
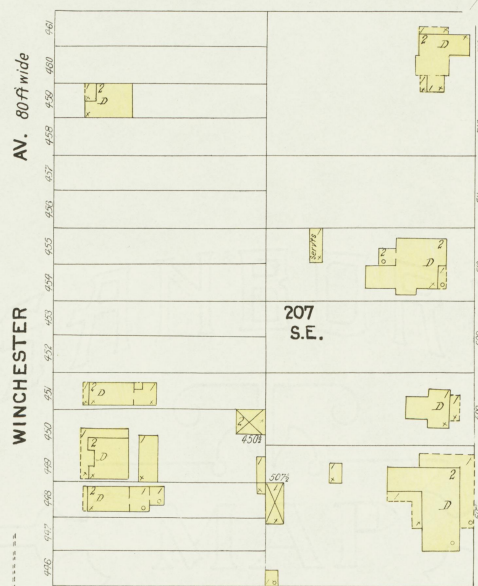
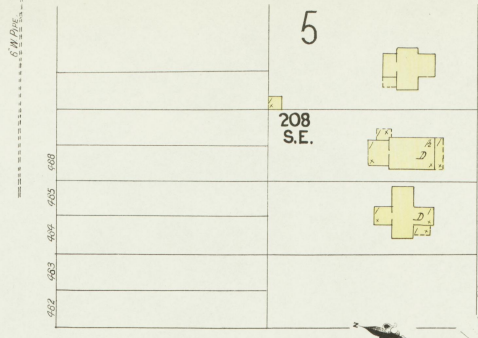
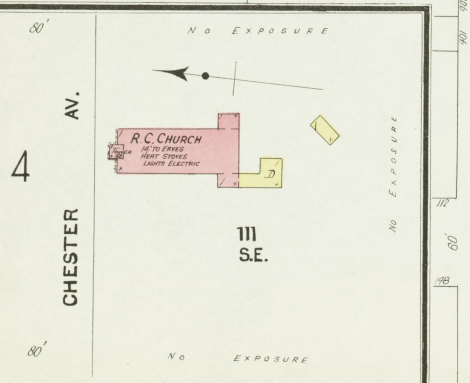
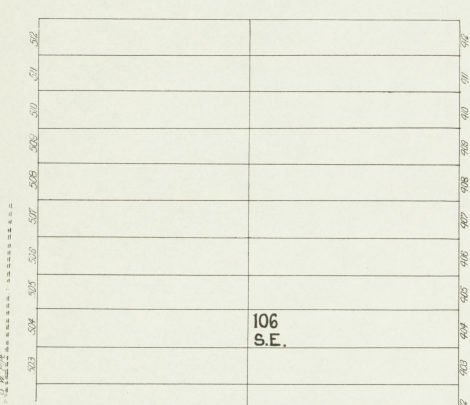
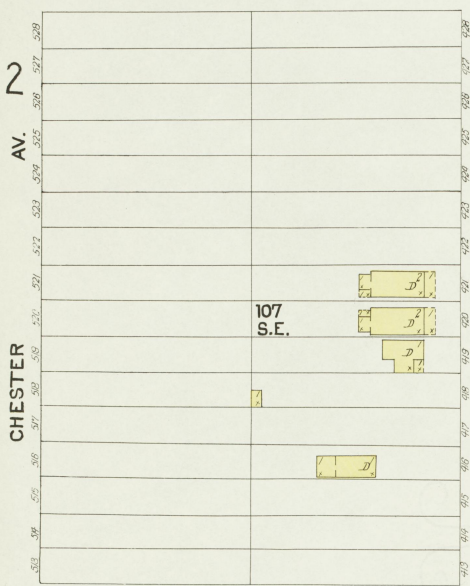
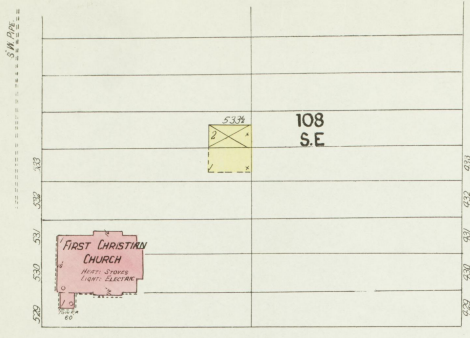
3

2

6

Aug. 1907  
MIDDLESBOROUGH  
KY.





Aug 1907  
MIDDLESBOROUGH  
KY.

6

7

2

CHESTER AV.

4

CHESTER AV.

23<sup>RD</sup> ST.

ST.

AV. 80 FT wide

WINCHESTER

AV. 80 FT wide

EXETER

ROCHESTER

24<sup>TH</sup> ST.

ST.

25<sup>TH</sup> ST.

ST.

305 S.E.

111 S.E.

106 S.E.

107 S.E.

108 S.E.

208 S.E.

207 S.E.

206 S.E.

205 S.E.

308 S.E.

307 S.E.

306 S.E.

305 S.E.

R.C. CHURCH  
107 1/2 FT. HIGH  
HEAVY STONES  
LIGHT ELECTRIC

FIRST CHRISTIAN CHURCH  
107 1/2 FT. HIGH  
HEAVY STONES  
LIGHT ELECTRIC

No EXPOSURE

No EXPOSURE

No EXPOSURE

6 1/2 FT. HIGH

6 1/2 FT. HIGH

6 1/2 FT. HIGH

6 1/2 FT. HIGH

6 1/2 FT. HIGH

6 1/2 FT. HIGH

Map Datum



AUG. 1907  
MIDDLESBOROUGH  
KY.



5

0

7

7

7

7

ROCHESTER AV.

DONCASTER AV.

DONCASTER AV.

DONCASTER AV.

22<sup>ND</sup> ST.

ST.

TWENTIETH

TWENTIETH

21<sup>ST</sup> ST.

ST.

24<sup>TH</sup> ST.

ST.

409 S.E.

509 S.E.

411 S.E.

408 S.E.

508 S.E.

411 S.E.

410 S.E.

510 S.E.

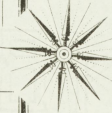
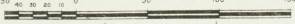
407 S.E.

507 S.E.

409 S.E.

509 S.E.

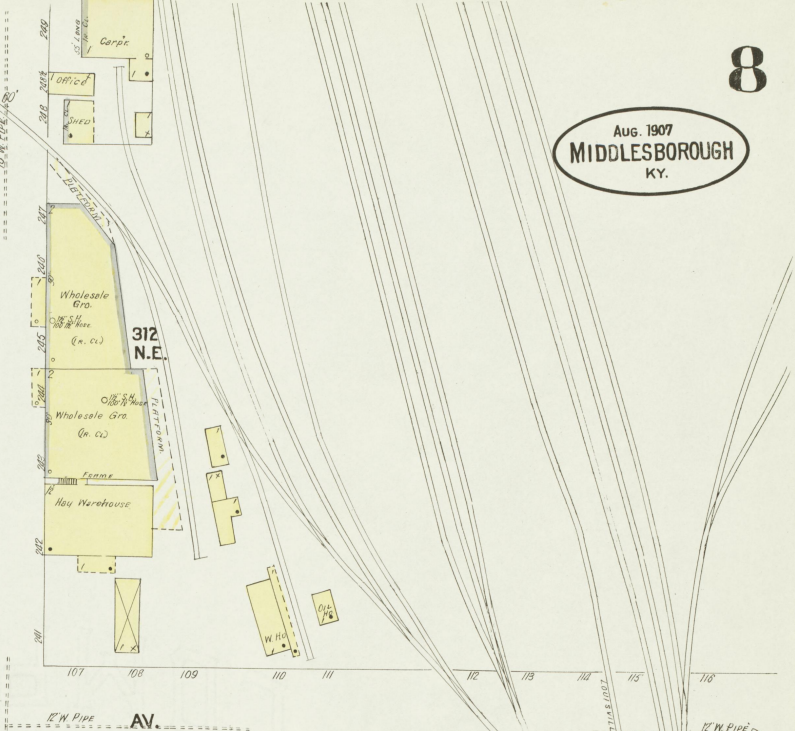
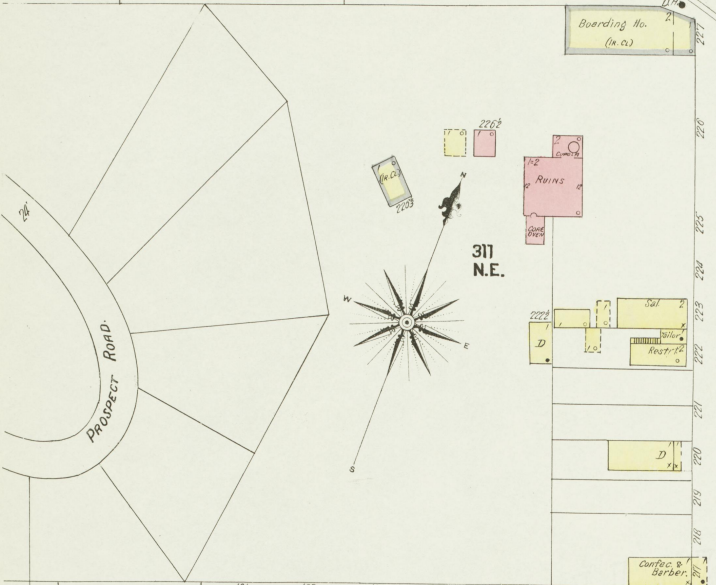
Scale of Feet.



Map Division  
CIVIL ENGINEERS  
City of Middlesborough

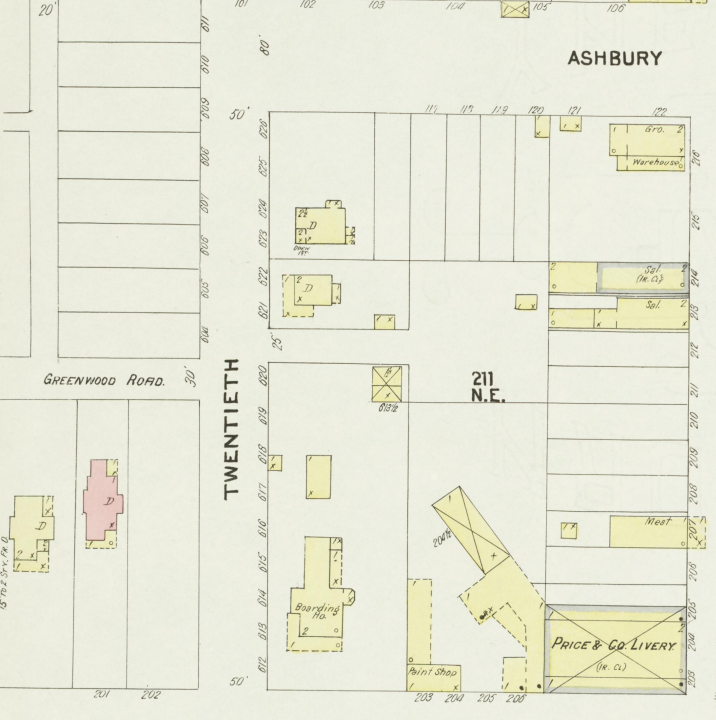


10  
BLOOMSBURY  
AV.

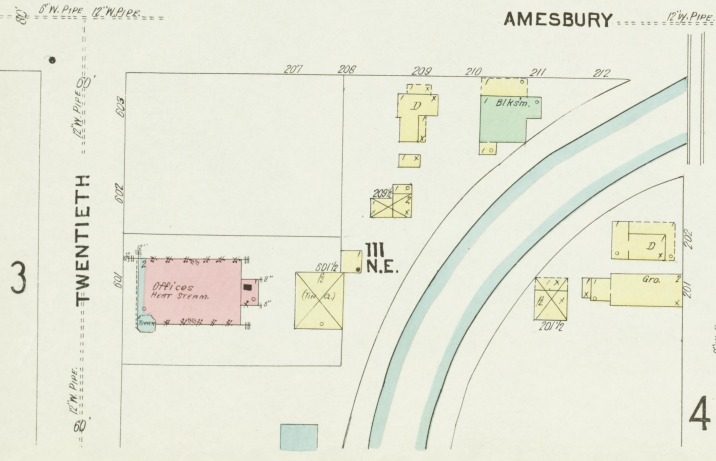


ASHBURY

NINETEENTH



AMESBURY

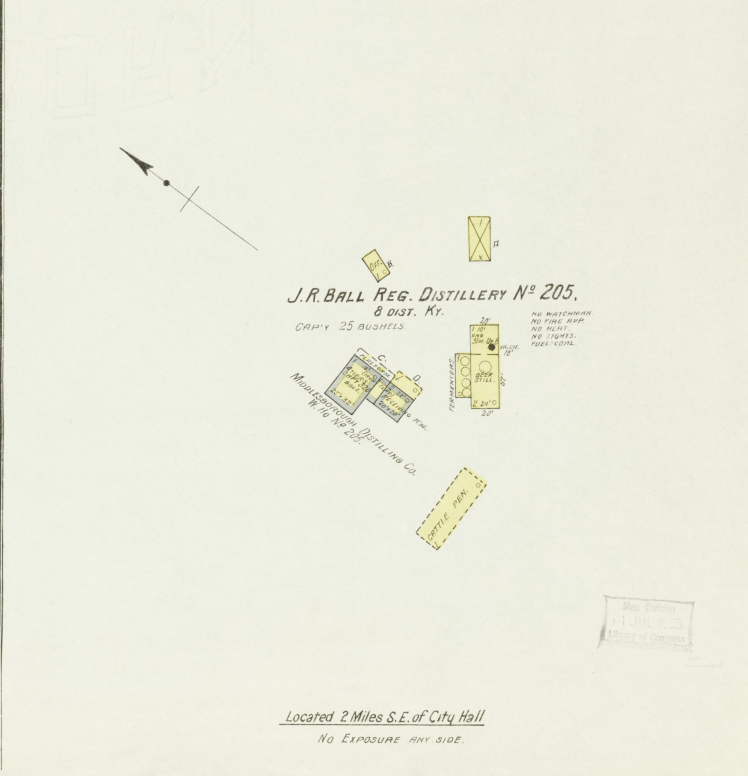
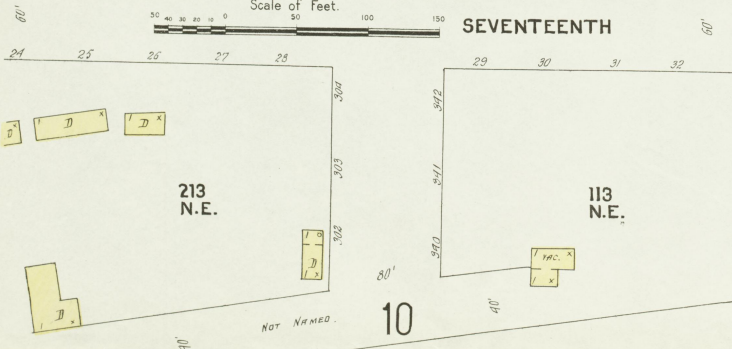
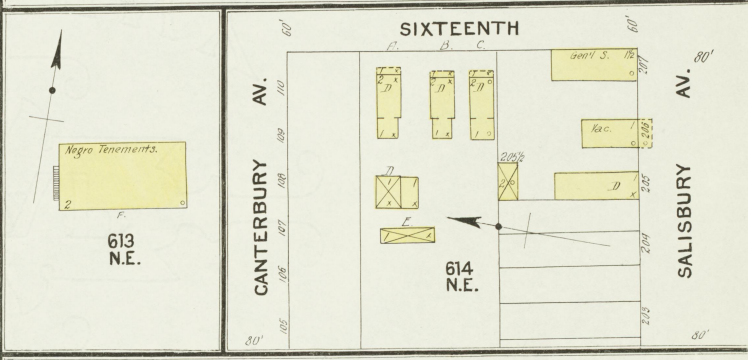
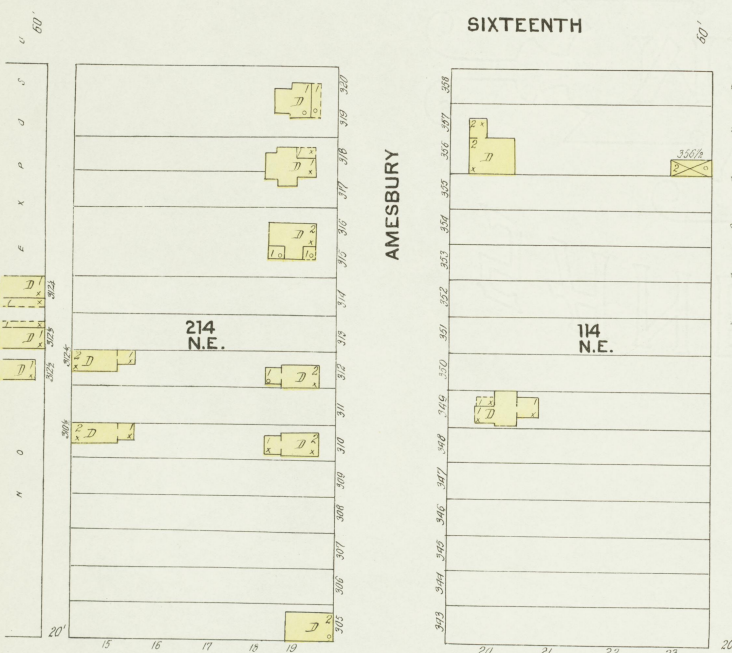
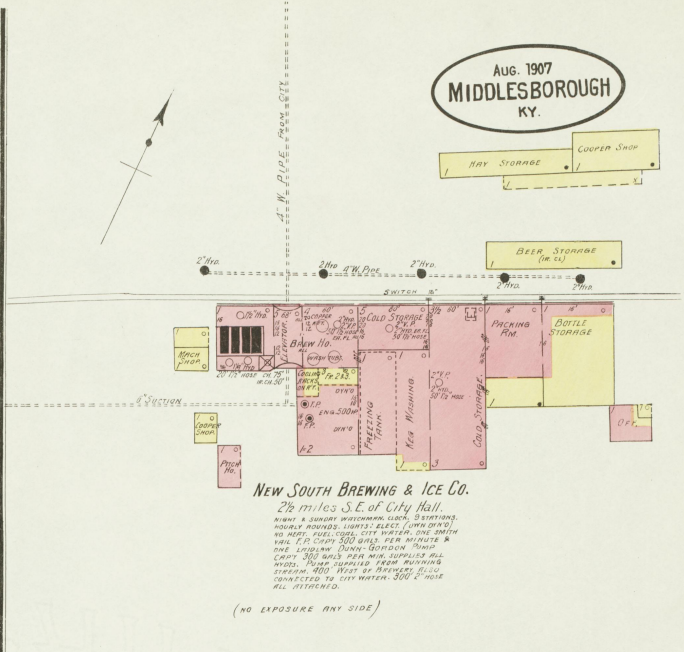
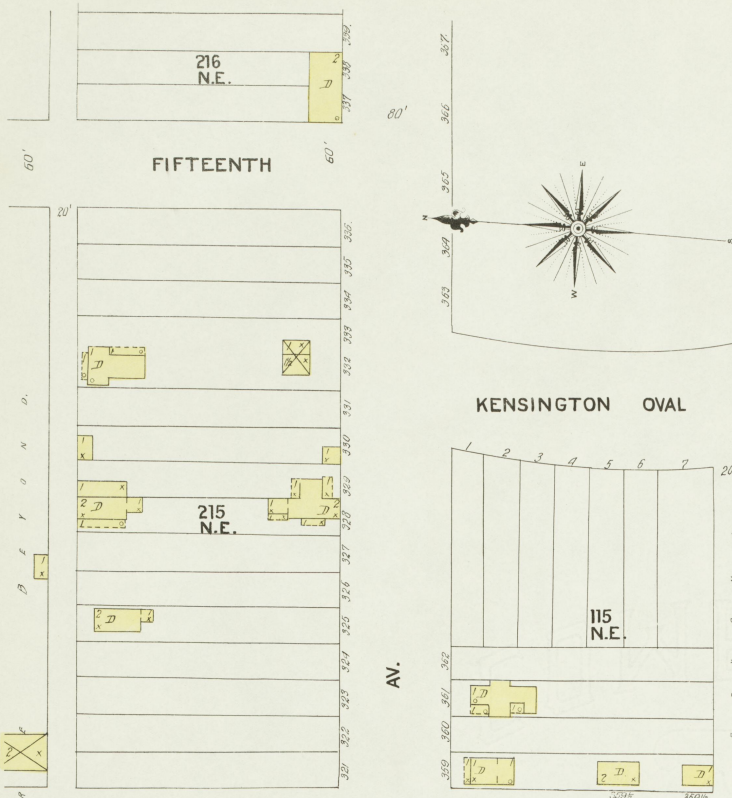


MIDDLESBORO SUPPLY CO.  
CORN MILL.

Scale of Feet.  
50 100 150



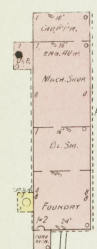
AUG. 1907  
MIDDLESBOROUGH  
KY.



Located 2 Miles S.E. of City Hall  
NO EXPOSURE ANY SIDE.

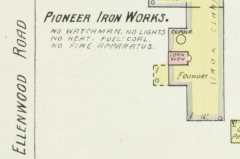
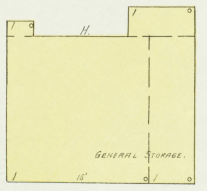
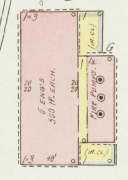
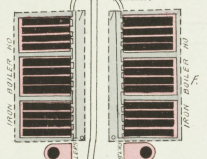
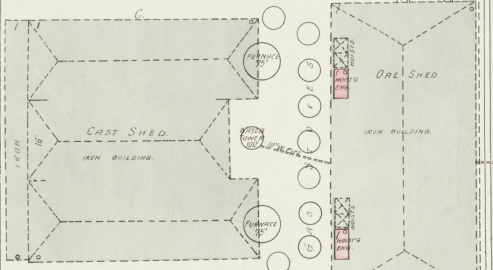
Map Printed  
JUL 15 1907  
City of Middlesborough





**VIRGINIA IRON, COAL & COKE CO.**

NIGHT & SUNDAY WATCHMEN NO CLOCK LIGHTS - ELECT. NO HEAT. FUEL COAL. NO REGULAR PIPE LINES, BUT A NUMBER OF SMALL SPOTS WITH SMALL AMT OF HOSE ATTACHED USED IN MANUFACTURING SCATTERED OVER BUILDINGS.



**DANBURY AV. 10**

**NINETEENTH**

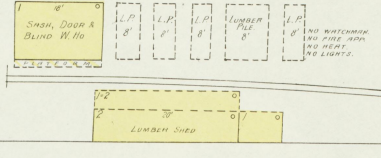
**LOUISVILLE & NASHVILLE R.R.**

**ROAD**

Aug. 1907  
**MIDDLESBOROUGH KY.**  
**10**

**AMESBURY AV.**

**MIDDLESBOROUGH LUMBER CO.**

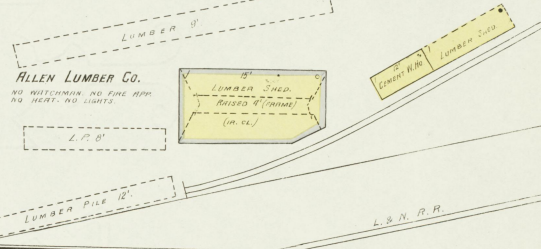


**LOUISVILLE & NASHVILLE R.R.**

**100-ft wide CUMBERLAND AV.**

**ALLEN LUMBER CO.**

NO WATCHMAN NO FIRE APP. NO HEAT. NO LIGHTS.



**DANBURY**

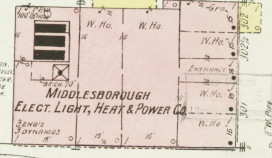
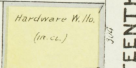
**AV. 10**

**ELLENWOOD**

**411 N.E.**

**NINETEENTH**

**IRONWOOD AV.**



**BLOOMSBURY AV.**

