

3 0425 02847688 6  
9 3922 CHS 1982 115

# CHATTAHOOCHEE National Forest

## Armuchee Ranger District



United States Department of Agriculture  
Forest Service Southern Region

### WELCOME TO THE ARMUCHEE RANGER DISTRICT

The Armuchee Ranger District, located in the ridge and valley region of northwestern Georgia, is part of the Chattahoochee National Forest. Containing over 62,000 acres, the district offers a wide variety of activities to interest you and your family. Whether you enjoy camping, hiking, fishing, hunting, or picnicking, the Armuchee Ranger District has your choice.

### MULTIPLE USE

The U.S. Forest Service manages the natural resources found on the Armuchee Ranger District to provide the greatest, long-run benefit to the public. The land is required by law to be managed for outdoor recreation, timber, water, and wildlife. By using careful management practices the Forest Service ensures that all of our natural resources are protected and used wisely.

### HISTORY

The Armuchee Ranger District is rich in historical significance. The Cherokee Indians lived in this area from the 1500's until white settlers drove them out in the 1800's in the famed "Trail of Tears." Several major Civil War battles were fought in this area: most of them centered around the railroad which stretched from Chattanooga, Tennessee, to Atlanta, Georgia. One such skirmish occurred in 1862 and was later made into a movie called "The Great Locomotive Chase" starring Fess Parker. The chase started in Marietta, Georgia, when 17 Union soldiers led by James Andrews hijacked a Confederate train, known as "The General," and headed north destroying the tracks and telegraph wires along the way. Confederate forces finally re-captured the train in Resaca, Georgia, before Andrews' Raiders were able to completely destroy the tracks. Most of the Union soldiers were captured and eight, including Andrews, were hanged as spies.



### GENERAL REGULATIONS

Certain rules are enforced on the Chattahoochee National Forest in order to insure your safety and enjoyment. By observing the regulations posted at recreation sites, you and others will be able to fully enjoy all that the National Forests have to offer.

If you have questions, or would like brochures, please contact:

Forest Supervisor  
601 Broad Street  
Cainesville, GA 30501  
404-536-0541  
  
District Ranger  
705 Foster Blvd.  
LaFayette, GA 30728  
404-638-1085

### NO-TRACE ETHIC

We challenge you to leave no trace of your visit so that the next person can enjoy a natural scene. Please tread lightly so that nature can endure and replenish.

Read the list of No-Trace tips below and check those you actually use. If you check 25-30, you're an excellent No-Trace user; 20-24, you're coming along; you're below 20, you may be doing more damage than your favorite spot can stand.

When I'm on the National Forests I:

- Plan ahead to avoid impact
-Avoid holidays and weekends
-Limit group size (6 or less optimum)
-Repackage food to reduce containers
-Take along a litter bag to carry out all refuse
-Carry a stove and foods requiring little cooking
-Buy only gear in subdued forest colors
-Check at the Ranger Station for low-use areas

- Travel to avoid impact
-Travel quietly
-Walk single-file in center of trail
-Stay on main trail even if wet
-Never shortcut switchbacks
-Look at and photograph, never pick or collect
-Avoid popular areas
-Never discard cigarette butts, candy or gum wrappers
-Walk softly. Don't kick up dirt and stones or trample vegetation



### Make No-Trace camps

- Select a site invisible from the trail and any other camping parties
-Camp at least 25 feet from natural water sources and away from "beauty spots"
-Avoid using existing campsites that are obviously over-camped
-Never cut standing trees and vegetation or pull up plants
-Never dig hipholes or trenches
-Wear light-weight, soft-sole shoes around camp
-Avoid building campfires or make only small fires in safe places
-Never wash dirty dishes, clothes, or yourself directly in stream or spring
-Use biodegradable soap and dispose of waste water at least 100 feet away from water supply
-Bury human waste six inches deep at least 100 feet from water
-Stay as quiet as possible. Leave radios and tape players at home
-Leave my dog at home

### Leave A No-Trace Campsite

- Pick up every trace of litter
-Down my campfire and erase all evidence of it
-Replace and scatter twigs and leaves cleared for a sleeping area
-Pack out all garbage
-Check for any evidence of my stay

### RECREATION OPPORTUNITIES

The Armuchee Ranger District provides a vast array of recreation opportunities for you and your family. Just a few activities you can participate in are:

### CAMPING

The district offers opportunities for camping in developed sites and dispersed, primitive camping. The Pocket Recreation Area and Hidden Creek Recreation Area provide developed campsites for those who want such facilities as water and restrooms. Each campsite has a tent pad, picnic table, and cooking grill. A fee is charged for camping and the areas are open from spring to fall.

### PICNICKING

As with camping, you can picnic on the district in either a developed area or in any dispersed site. There is no charge for picnicking. The Pocket Recreation Area and Keown Falls Scenic Area provide developed picnic facilities such as tables, grills, water, and restrooms. These areas are open from spring to fall.

### HIKING

There are 16 miles of trail on the Armuchee Ranger District. Some of the trails are open for foot, horse, and ORV travel and others are restricted to only foot travel. Check with the local Forest Service office before taking a horse or ORV on any trail.

John's Mountain Trail (3 mile loop) - departs from John's Mountain Overlook, goes to Keown Falls, and returns to the Overlook.

Keown Falls Trail (1.8 mile loop) - departs from the Keown Falls Picnic Area, winds its way up the hillside alongside the west fork of John's Creek, and passes behind Keown Falls, and returns to the Picnic Area.

Pocket Trail (2.8 mile loop) - departs from and returns to the Pocket Recreation Area.

Chickamauga Trail (6.2 mile loop) - begins at the end of Ponder Creek Road and makes a loop around Dick Ridge.

Taylor Ridge Trail (2.4 miles) - begins at the intersection of GA 136 and Taylor Ridge. This trail open to ORV's and horses.



### SAFETY TIPS

- File a trip plan with family or friends so someone will know where you are and who to contact should you fail to arrive home as planned.
-Boil or purify all water before drinking.
-Carry a first aid kit. Know how to treat minor injuries. Be aware of where the closest hospital is in case of serious injuries or snakebite.
-Wear proper clothing for the season and terrain. Remember the temperature in the mountains is cooler than that of lower slopes and valleys. A cold, wet, and exhausted hiker can experience potentially fatal hypothermia with the air temperature as high as 41°F.
-Do not try to climb on or around waterfalls. People have been fatally injured while climbing around waterfalls. Be aware that lichen-covered rocks around waterfalls offer no sure footing.
-Keep glass away from swimming areas.
-Never leave your campfire unattended.



### SCENIC AREAS/OVERLOOKS

The Armuchee Ranger District offers many beautiful vistas for photographers and sightseers. The Keown Falls Scenic Area is a 231-acre site which contains Keown Falls, a pair of waterfalls which drop approximately 70 feet over a rugged bluff. The Keown Falls Trail leads to the falls and gives you an opportunity to view them from above and from behind the falls. You'll also see many varieties of wildflowers in this scenic area.

John's Mountain Overlook has a viewing platform that allows you to look into the peaceful valley below. You'll often see several species of birds while on the viewing platform.

### HUNTING/FISHING

Wildlife and fish on the Armuchee Ranger District are managed cooperatively by the U.S. Forest Service and the Game and Fish Division of the Georgia Department of Natural Resources. This means that all state hunting and fishing regulations, fees, and seasons apply to the National Forests.

You may hunt anywhere on the district except within developed recreation areas or any posted area. The John's Mountain Wildlife Management Area is located on the district and has special seasons and regulations.

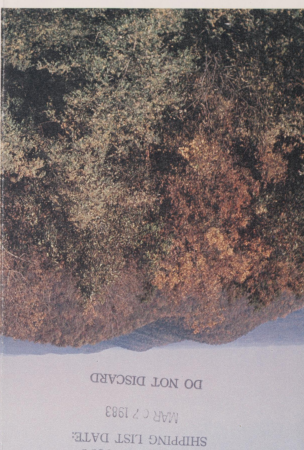
Fishing on the district is for trout and warm-water species. Twenty streams are open to fishing. These include Furness Creek, the Armuchee Creek, Ponder Creek, and John's Creek.

To get current information on seasons, licenses, limits, and other regulations, contact: Department of Natural Resources 270 Washington Street, SW Atlanta, GA 30334 404-656-3500

### WEATHER CONDITIONS

The Georgia mountain area has summers with warm to hot days and comfortable nights. Winters are quite cold but many mid-winter days are warm enough for outside comfort. Precipitation varies but normally averages from 50 to 65 inches per year. Snowfall or ice occurs every winter. Wind speeds are generally light but speed and direction vary with location.

The last two weeks of October are generally the peak time for viewing fall colors. Spring's wildflowers usually bloom in April.

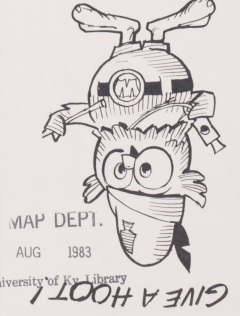
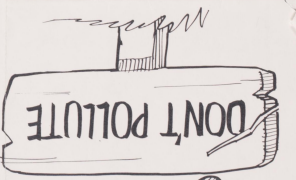


CHATTAHOOCHEE National Forest Armuchee Ranger District



### PLEASE PREVENT FOREST FIRES

The facilities, programs, and services of the Forest Service and the National Forests are for the use and enjoyment of all people. Discrimination against any person because of race, color, national origin, sex, age, religion, or physical condition is strictly against the policy of the USDA Forest Service, and should be reported to the Secretary of Agriculture, Washington, D.C. 20250.



MAP DEPT. AUG 1983

University of Kentucky Library

The facilities, programs, and services of the Forest Service and the National Forests are for the use and enjoyment of all people. Discrimination against any person because of race, color, national origin, sex, age, religion, or physical condition is strictly against the policy of the USDA Forest Service, and should be reported to the Secretary of Agriculture, Washington, D.C. 20250.



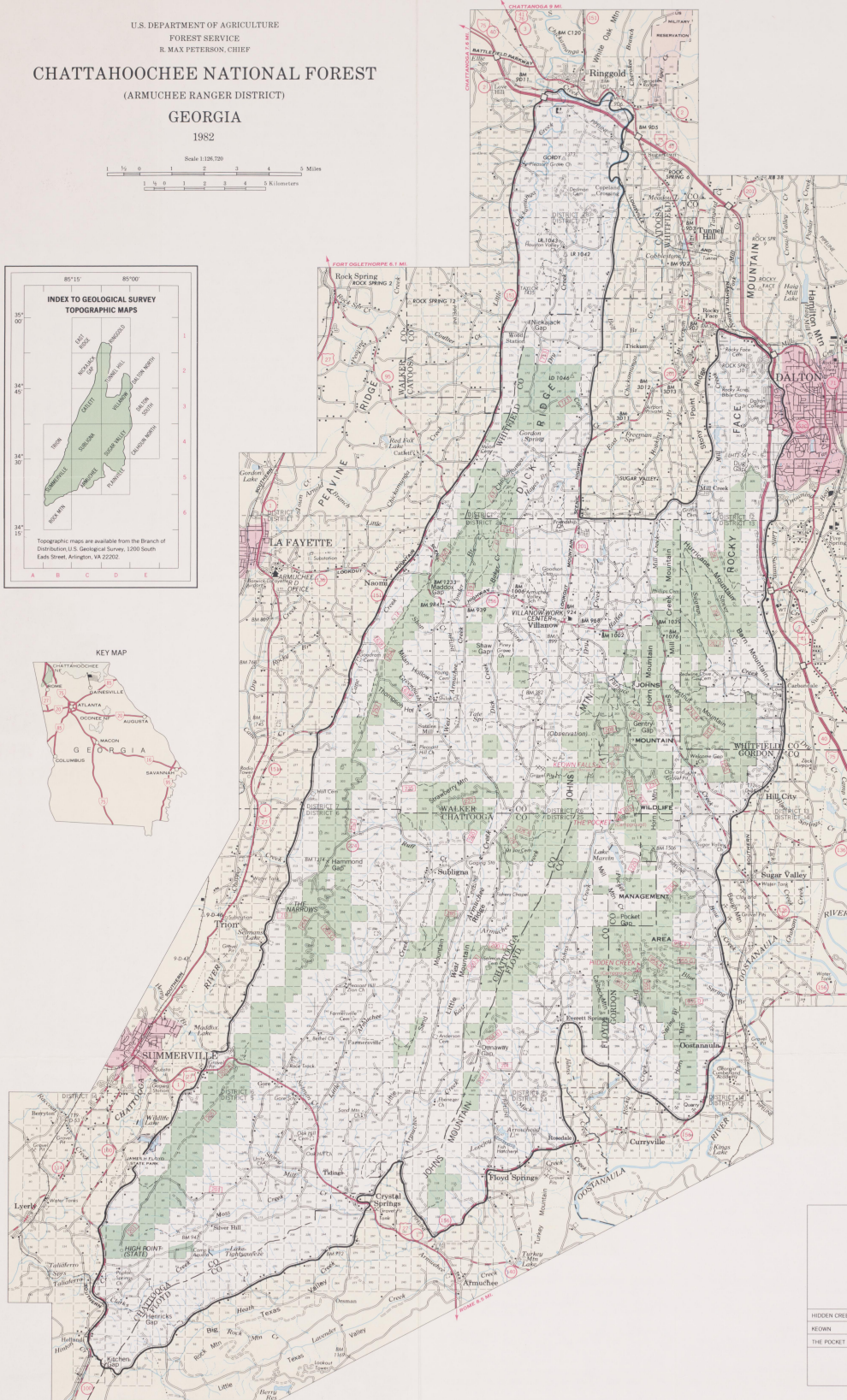
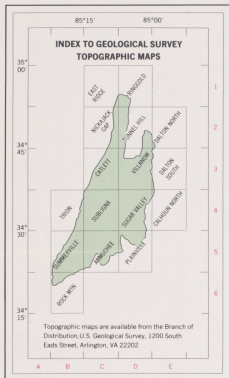
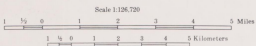
U.S. DEPARTMENT OF AGRICULTURE  
 FOREST SERVICE  
 R. MAX PETERSON, CHIEF

# CHATTAHOOCHEE NATIONAL FOREST

(ARMUCHEE RANGER DISTRICT)

## GEORGIA

1982



- ### LEGEND
- National Forest Boundary
  - Special Area Boundary
  - Chattahoochee National Forest
  - District Ranger Office
  - Other Forest Service Facility
  - Recreation Site, Forest Service
  - Primary Highway
  - Secondary Highway
  - Improved Light Duty
  - Unimproved Dirt
  - Trail
  - Interstate Highway
  - U.S. Highway
  - State Highway
  - Forest Route
  - Forest Trail
  - House, Church, School
  - Cemetery
  - Horizontal Control Station
  - Permanent Lockout Station
  - Power Transmission Line
  - Other Federal Land
  - State Land

FOREST SUPERVISOR'S OFFICE, GAINESVILLE, GEORGIA  
 GEORGIA STATE LAND LOT SYSTEM

### RECREATION SITES

LOCATION	Barbecue	Camping	Drinking Water	Fishing	Hiking Trails	Picnicking	Recreation Facilities	Swimming	Trails	Tram	Tram Station	Tram Stop
HIDDEN CREEK	D-4	•	•	•	•	•	•	•	•			
REDWAX	D-4	•	•	•	•	•	•	•	•			
THE POCKET	D-4	•	•	•	•	•	•	•	•			

Fee Area = F  
 Launch Ramp = L  
 Electrical Motors Only = E  
 Carry Down Access = A

FOREST SERVICE MAP  
 Constructed 1964 in the Regional Office, Atlanta, Georgia, from USDA Forest Service and U.S. Geological Survey maps. Revised 1982 by the F.S. Geomorphology Service Center from recent U.S. Geological Survey quadrangles and field review by the Southern Region.

Polysomic projection  
 1927 North American datum