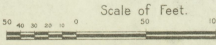
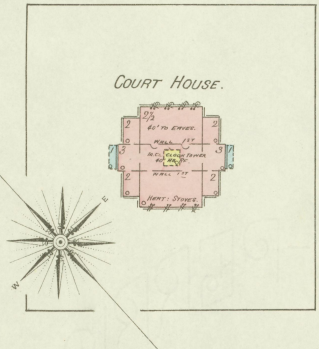


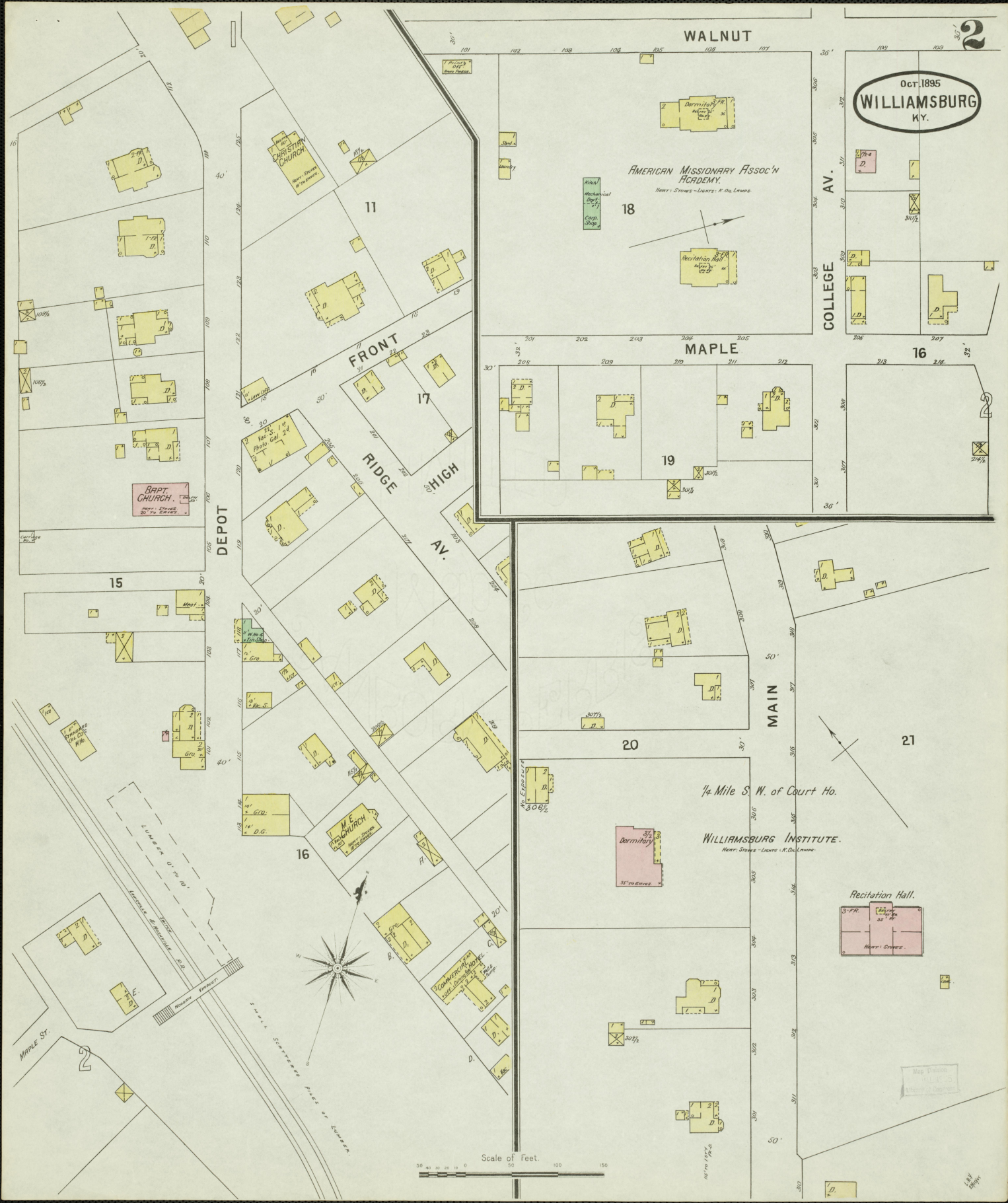


KEY

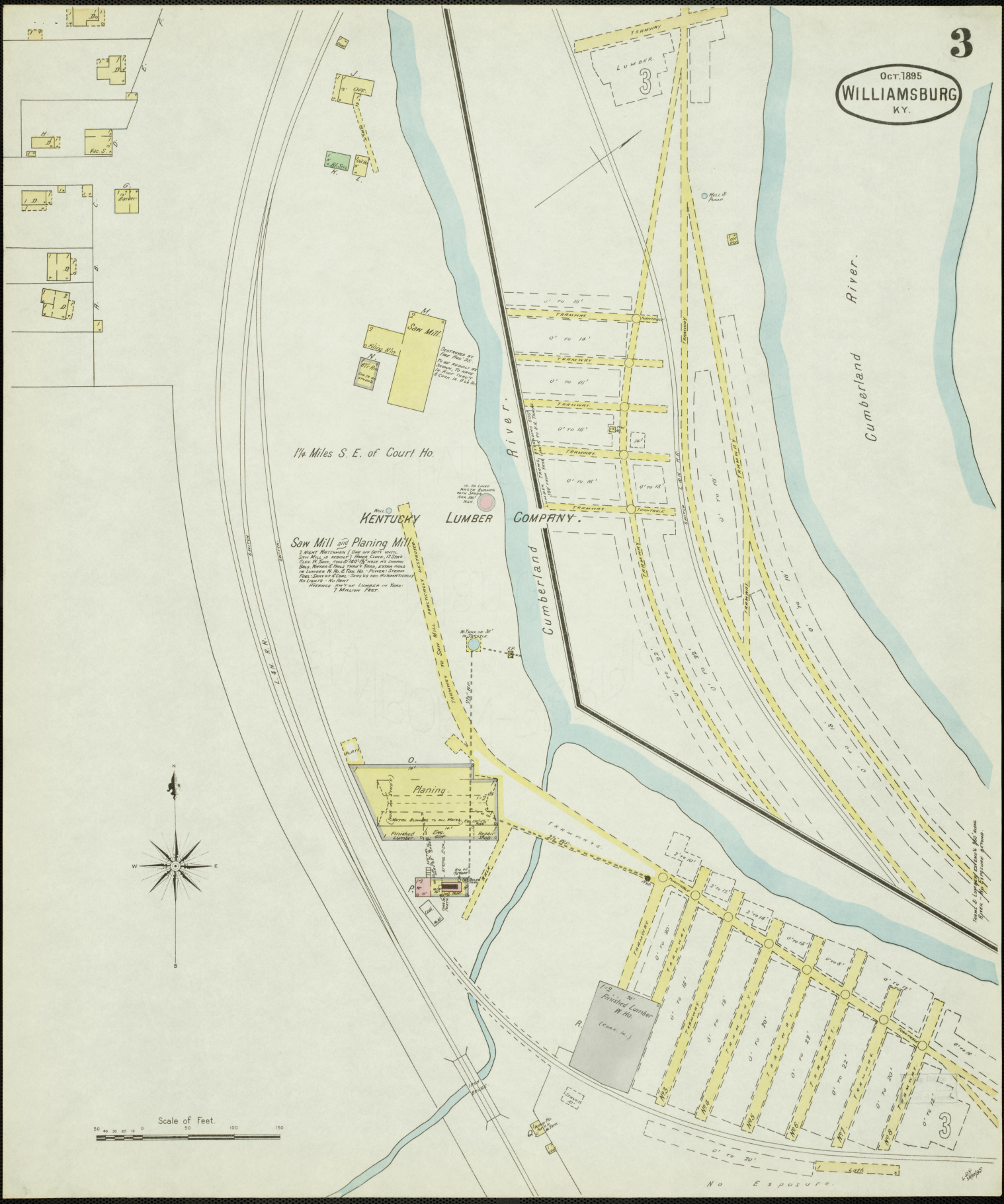
- FIRE WALL OR AS ROOF
- FRAME PARTITION
- OPENING & IRON DOOR
- WOODWORK - SHUTTERS
- STABLE
- WINDOW IN 1ST STORY
- 1ST & 2ND STORIES
- 3RD & 4TH STORIES
- BLOCKS COLORED YELLOW ARE FRAME
- RED - BRICK
- BLUE - STONE
- BROWN - IRON
- GREEN - ADORNE
- ORANGE - SPECIALS
- MARKED IN ARE CLOTH LINES
- MARKED IN ARE CLOTH LINES
- ADAPTABLE STREET NOS ARE ACTUAL
- CONNECTIVE - IRREGULAR
- BROWN LINE NEAR BLD'S WOOD CORNICE
- SOLID



Oct. 1895
WILLIAMSBURG
N.Y.



Scale of Feet.
0 50 100 150

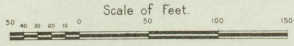
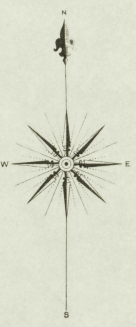


1/4 Miles S. E. of Court Ho.

KENTUCKY LUMBER COMPANY

Saw Mill and Planing Mill

3 Millwrightmen (One on duty)
Saw Mill in operation 3 Days a Week (10 Days)
Planing Mill in operation 3 Days a Week (10 Days)
Saw Mill in operation 3 Days a Week (10 Days)
Planing Mill in operation 3 Days a Week (10 Days)
Saw Mill in operation 3 Days a Week (10 Days)
Planing Mill in operation 3 Days a Week (10 Days)
Saw Mill in operation 3 Days a Week (10 Days)
Planing Mill in operation 3 Days a Week (10 Days)

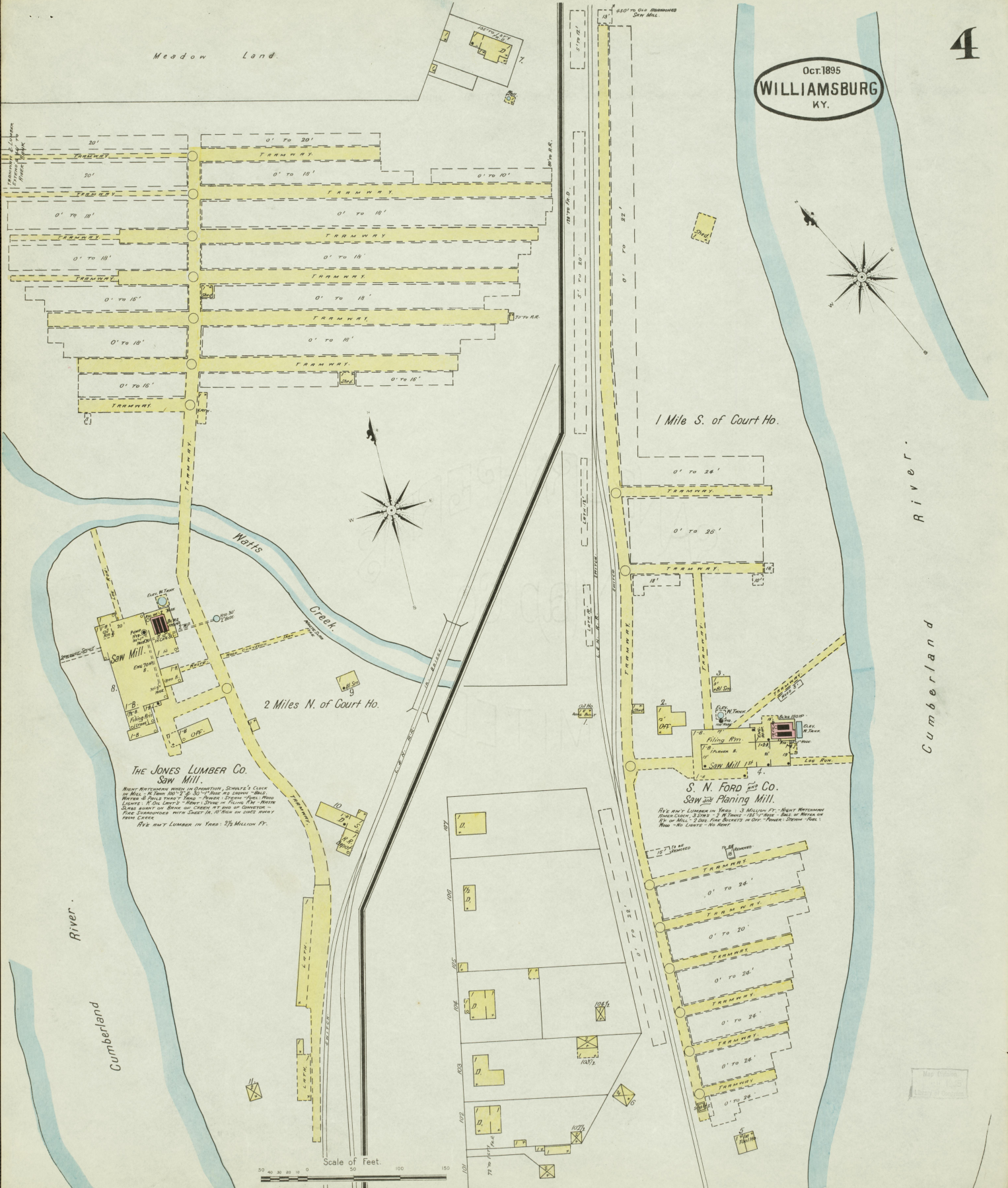


Hand-drawn by [unclear] and [unclear]

NO EXPOSURE

Oct. 1895
WILLIAMSBURG
KY.

Meadow Land.



Tramway to Children
Street at Mill
Tramway to Mill

**The Jones Lumber Co.
Saw Mill.**
BEST WATSONS WORK ON DISSENTION, SCHWAB'S CASE
ON MILL - 80 TONS 100' x 30' x 30' HIGHER CONCRETE BRIDGE
WATER & DIPS THROUGH YARD - POWER - STEAM - FUEL - WOOD
CHUCKS - 80 OLD LOGS - 1000' STORE OF LOGS FOR FUTURE
SLABS BUILT ON BARS OF IRON - 10' HIGHER CONCRETE -
ONE CONCRETE WITH SLABS 40' x 10' ON EACH SIDE
FROM CENTER
ONE HUNDRED TONS IN YARD - 3 1/2 MILLION FT.

**S. N. FORD & Co.
Saw and Planing Mill.**
FIVE HUNDRED TONS IN YARD - 3 MILLION FT. - BEST WATSONS
POWER CASES - 3000' x 2' x 10' - 100' HIGHER CONCRETE
BRIDGE - 100' HIGHER CONCRETE - 100' HIGHER CONCRETE
FROM CENTER - 100' HIGHER CONCRETE - 100' HIGHER CONCRETE
FROM CENTER

Scale of Feet.
0 50 100 150

Cumberland
River.

1 Mile S. of Court Ho.

2 Miles N. of Court Ho.

Cumberland
River.