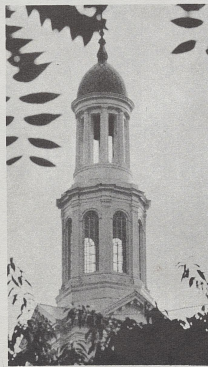


35. *Highway Research Laboratory*—Jointly operated by Department of Civil Engineering and State Department of Highways.
36. *Holmes Hall*—Single student housing.
37. *Home Economics Building*—Offices, laboratories and classrooms of School of Home Economics. Rees doll collection on first floor contains more than 400 dolls in period and foreign costumes.
38. *Insectary and Conservatory*—Offices and laboratories used by Department of Entomology of Experiment Station. It connects with greenhouses used by this department.
39. *Jewell Hall*—Single student housing.
40. *Journalism Building*—School of Journalism, Kernel Press, The Kentucky Kernel, The Kentuckian, central office of the Kentucky Press Association, University Printing Plant, complete photographic facilities, and University Editor.
41. *Kastle Hall*—Offices, classrooms and laboratories of Department of Psychology and Political Science as of September 1, 1965.
42. *Keeneland Hall*—Single student housing.
43. *Kincaid Hall*—Single student housing.
44. *Lafferty Hall*—Offices, classrooms and library of College of Law and offices of Kentucky Law Journal until September 1, 1965.
45. *Law Building (New)*—To be completed in August, 1965.
46. *Library (Margaret I. King)*—Central library containing reading rooms, stacks and special rooms. Also houses Department of Library Science and University Archives. The University Libraries, which comprise the central library and all departmental, divisional and collegiate collections, located in other buildings on the campus, contains more than 1,000,000 volumes. These libraries receive regularly more than 5,000 titles of periodicals and are a depository for U.S. Government publications.
47. *Maxwell Place*—Home of the President of the University. Oldest building on campus (constructed 1871). Famous poem "In Kentucky," was written here by Judge James H. Mulligan.
48. *McVey Hall*—Offices and classrooms of Departments of English, Mathematics and Astronomy; Radio, Television and Films; Social Work; University Post Office, the offices of University Press, broadcasting studios of station WBKY and Computing Center.
49. *Meats Laboratory*—Modern freezer lockers, facilities for slaughtering and curing meats and retail sales room.
50. *Medical Center*—Contains instructional, laboratory and administrative areas for Colleges of Medicine, Nursing, Dentistry,

- Medical Library, University Hospital, Out-patient Service, University Health Service, Rehabilitation Service, Department of Psychology offices until September 1, 1965, and University Personnel Office.
51. *Medical Center Heating Plant*—This coal-burning plant provides heat for University's Medical Center.
52. *Memorial Coliseum*—Erected by State of Kentucky as memorial to Kentucky men and women who died in World War II. It has facilities for Physical Education, including swimming pool, complete housing for Department of Intercollegiate Athletics, and will seat 12,000 for basketball games, concerts and lectures. Contains names of Kentucky War II dead, by counties, on permanent display.
53. *Memorial Hall*—University Auditorium, seats about 1,100, and is equipped with pipe organ and carillon bells.
54. *Miller Hall*—Offices, classrooms and laboratories of Departments of Geology and Modern Foreign Languages; Geology Library and Stenographic Bureau.
55. *Mineral Industries Building*—Offices of State Department of Mines and Minerals, Kentucky Geological Survey and State Board of Registration for Professional Engineers.
56. *Mining Laboratory*—Chemical laboratory designed for analytical investigations of coals and ores and laboratory for chemical engineering and mining engineering.
57. *Museum of Anthropology*—Exhibits and study collections of Museum of Anthropology. Originally the main library, it was given to the University by Andrew Carnegie. Offices of Department of Philosophy.
58. *Patterson Hall*—Single student housing.
59. *Patterson House*—Administrative offices for College of Arts and Sciences and International Center.
60. *Pence Hall*—School of Architecture as of September 1, 1965.
61. *Pharmacy Building*—Dean of the College of Pharmacy, offices, classrooms, laboratories and Pharmacy Library.
62. *Physics-Chemistry Building*—Classrooms, laboratories, research facilities for Departments of Physics and Chemistry. Office of Dean of Graduate School and University Safety and Security Director.
63. *Service Building*—Offices and shops of Division of Maintenance and Operations, Division of Purchases, central store room of the University and shipping and receiving facilities. Third floor is used as Library Annex and temporary museum.
64. *Social Sciences Building*—Classrooms and offices for Departments of Geography, Anthropology, and Political Science (until September 1, 1965).

65. *Small Animal Laboratory*—Used as experimental laboratory in agriculture.
66. *Sorority Row*—Includes Delta Zeta, Alpha Xi Delta, Kappa Delta, Alpha Gamma Delta, Zeta Tau Alpha and Kappa Alpha Theta sorority houses. Adjacent to these houses, on Rose Street, are the Chi Omega, Delta Delta Delta and Alpha Delta Pi sorority houses. Kappa Kappa Gamma has its house on Maxwell, Delta Gamma on Harrison and Pi Beta Phi on Maxwell.
67. *Stock Judging Pavilion*—Classroom space for work in animal science, poultry science and entomology.
68. *Stoff Field*—Football field and McLean Stadium, seating 37,500 persons.
69. *Student Center*—Center for student activities, lounges, ballroom, cafeteria, grill, recreation rooms, assembly rooms; offices for the Director, Program Director, Y.M.C.A. and Y.W.C.A.
70. *Tobacco Research Laboratory*—Laboratories and greenhouses used by College of Agriculture and Home Economics for research in culture, curing and diseases of tobacco.
71. *White Hall*—Department of Public Relations, Office of the Bursar, University Counseling and Testing (including veterans' affairs), University Credit Union, Placement Service and Business Services.
72. *Wildcat*—Houses campus grill and bowling lanes.

- Other major buildings include:
- Dillard House*—Cooperative housing for women students.
- Kentucky Life Museum*—Housed in historic mansion at Waveland, south farm of Experiment Station, museum contains items of early Kentucky life and large number of Civil War relics. The museum is located on Higbee Mill Road, just off Nicholasville Road, about three miles south of Lexington.
- Reynolds Building*—Houses School of Architecture until September 1, 1965. Film Library and Kentucky Municipal League. Located at 672 South Broadway, near Scott Street.
- Shannectown*—University housing project for married students near south end of old Experiment Station farm.
- Spindletop Hall*—University faculty-staff-alumni clubhouse located on Iron Works Pike.
- Weldon House*—Cooperative housing for women students.
- A number of other permanent buildings not shown on the map include dairy center, farm service building, greenhouses, barns, storage buildings, Rural Sociology and Home Economics Extension buildings.



UNIVERSITY OF KENTUCKY

Illustrated Map

EVERY YEAR the University of Kentucky campus is visited by several thousand persons. Many are high school students considering the University for their college studies, some are attending conferences on campus, and others come as tourists interested in seeing their state university. Many out-of-state groups also include the institution among attractions on their tours.

The University welcomes visitors. Groups may arrange for guided tours of the campus by contacting the Public Relations Department, 102 White Hall.

THE CAMPUS OF THE UNIVERSITY

THE UNIVERSITY OF KENTUCKY is a small city in itself. It has its own post office, bookstore, radio station, newspaper, printing plant, theater, police force, cafeteria, and hospital. The University community, including students, faculty and staff members, and their families, has a population of about 18,000.

There are 85 major buildings on the 706-acre main campus at Lexington. The University also owns and operates over 7,500 acres of farm land in several sections of the state and owns a 14,800-acre forest reserve in Eastern Kentucky.

Seven community colleges, each offering two years of college work, are operated by the University. They are located at Covington, Ashland, Henderson, Cumberland, Fort Knox, Elizabethtown and Prestonsburg. New community colleges are under construction at Somerset and Hopkinsville.

Locations of buildings on the main campus at Lexington are shown on the accompanying map. Following is a list of the major buildings, with brief enumerations of the departments and divisions they house. Numbers below correspond to numbers of buildings on the map.

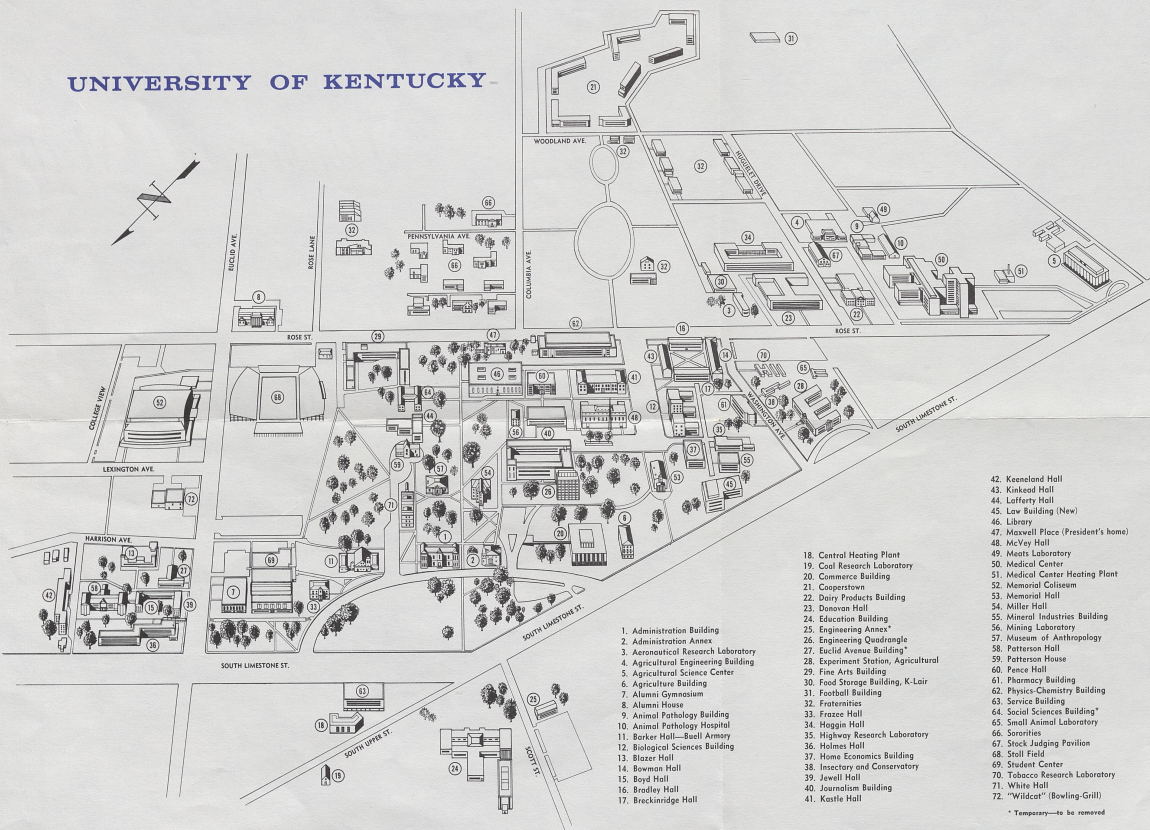
1. *Administration Building*—President, Executive Vice President, Vice Presidents for Business Affairs, University Relations and Student Affairs; Dean of Men; Dean of Women; Kentucky Research Foundation and Office of Institutional Studies.
2. *Administration Annex*—Dean of Admissions and Registrar, offices of Admissions and Records and Director of Special Services.
3. *Aeronautical Research Laboratory*—Laboratory of Engineering Experiment Station, used for research in aerospace technology.
4. *Agricultural Engineering Building*—Houses classrooms, offices and laboratories of Agricultural Engineering and modern farm machinery.
5. *Agricultural Science Center*—Dean of the College of Agriculture and Home Economics, Director of the Agricultural Experiment Station, Director of the Cooperative Extension Services, Associate Dean, Associate Directors, offices, laboratories and research facilities for Agronomy (including National Tobacco Laboratory), Plant Pathology, Poultry, Animal Science, Horticulture, Forestry and Agricultural Library.
6. *Agriculture Building*—Classrooms and laboratory space for Rural Sociology and some Home Economics classes.
7. *Alumni Gymnasium*—Men's Section of Physical Education, a playing floor, a corrective gymnasium, classrooms, lockers and showers. Houses majority of physical education activities and intramurals for men.
8. *Alumni House*—Offices, library book room and conference rooms.
9. *Animal Pathology Building*—Department of Animal Pathology.
10. *Animal Pathology Hospital*—Animal hospital of Department of Animal Pathology.
11. *Barker Hall*—Offices, classrooms and storerooms of Military and Aerospace Science Departments; rifle range, women's gymnasium and Section of Physical Education for Women.
12. *Biological Sciences Building*—Ancient Languages and Literatures, Botany, Microbiology, Zoology, Biological Sciences Library, Zoology Museum and Psychology classrooms (until September 1, 1965).
13. *Blazer Hall*—Single student housing.
14. *Bowman Hall*—Single student housing.
15. *Boyd Hall*—Single student housing.
16. *Bradley Hall*—Single student housing.
17. *Breckinridge Hall*—Single student housing.
18. *Central Heating Plant*—Steam boilers which supply heat to all buildings on main campus and number of other University buildings.
19. *Coal Research Laboratory*—Pilot plant for low temperature production from coal of motor fuels, lubricants and high grade, smokeless, solid fuels; base materials from which explosives, plastics and synthetic rubber may be manufactured. Oil shales and other carbonaceous materials may also be processed in this plant. Operated by Department of Mining and Metallurgical Engineering.

2015LA045

MAPS Box 127

[1965]

UNIVERSITY OF KENTUCKY



1. Administration Building
2. Administration Annex
3. Aeronautical Research Laboratory
4. Agricultural Engineering Building
5. Agricultural Science Center
6. Agriculture Building
7. Alumni Gymnasium
8. Alumni House
9. Animal Pathology Building
10. Animal Pathology Hospital
11. Barker Hall—Bull Army
12. Biological Sciences Building
13. Blazer Hall
14. Bowman Hall
15. Boyd Hall
16. Bradley Hall
17. Bucknidge Hall

18. Central Heating Plant
19. Coal Research Laboratory
20. Commerce Building
21. Cooperstown
22. Dairy Products Building
23. Donovan Hall
24. Education Building
25. Engineering Annex*
26. Engineering Quadrangle
27. Euclid Avenue Building*
28. Experiment Station, Agricultural
29. Fine Arts Building
30. Food Storage Building, K-Lair
31. Football Building
32. Fraternities
33. Frazee Hall
34. Haggin Hall
35. Highway Research Laboratory
36. Holmes Hall
37. Home Economics Building
38. Inspectory and Conservatory
39. Jewell Hall
40. Journalism Building
41. Kasell Hall

42. Keeneland Hall
43. Kinkead Hall
44. Lafferty Hall
45. Law Building (New)
46. Library
47. Maxwell Place (President's home)
48. McVey Hall
49. Meats Laboratory
50. Medical Center
51. Medical Center Heating Plant
52. Memorial Coliseum
53. Memorial Hall
54. Miller Hall
55. Mineral Industries Building
56. Mining Laboratory
57. Museum of Anthropology
58. Patterson Hall
59. Patterson House
60. Pence Hall
61. Pharmacy Building
62. Physics-Chemistry Building
63. Service Building
64. Social Sciences Building*
65. Small Animal Laboratory
66. Sororities
67. Stock Judging Pavilion
68. Stall Field
69. Student Center
70. Tobacco Research Laboratory
71. White Hall
72. "Wildcat" (Bowling-Gill)

* Temporary—to be removed

20. *Commerce Building*—Classrooms, of fices, auditorium, graduate and undergraduate reading rooms, student and faculty lounges for College of Commerce; Bureau of Business Research and Patterson School of Diplomacy and International Commerce.

21. *Cooperstown*—Single student housing.

22. *Dairy Products Building*—Animal Science, Creamery License, Dairy Science, Poultry Science, herd book room, incubation laboratory and laboratories for dairy manufacturing.

23. *Donovan Hall*—Single student housing.

24. *Education Building*—Frank Graves Dickey Hall; office of the Dean of College of Education, Bureau of School Service and classrooms for education courses; Taylor Education Building; Kentucky Cooperative Testing Service and Audiology and Speech Clinics; Departments of Sociology and Rural Sociology.

25. *Engineering Annex*—Additional drafting rooms and laboratories for College of Engineering. Located on Scott Street.

26. *Engineering Quadrangle*—Houses Dean of the College of Engineering, Engineering Library and Departments of Mechanical, Electrical, Civil, Chemical, Engineering Mechanics and Mining and Metallurgical Engineering.

27. *Euclid Avenue Classroom Building*—Some of Aerospace facilities and classrooms for Department of Physical Education.

28. *Experiment Station, Agricultural (Scottell Hall)*—Department of Public Information (Agricultural) and Educational Aids; offices, laboratories and research facilities for Agronomy, Chemistry, Entomology, Botany, Agricultural Economics, Feed and Fertilizer, and Seed Control and Agricultural Extension. Offices for Rural Sociology are in the Experiment Station Annex.

29. *Fine Arts Building*—Art, Music, Dramatics and Speech, air-conditioned Guignol Theatre which seats approximately 425 persons and University Art Gallery.

30. *Food Storage Building*—Warehouse space for University food service units, facilities for processing meats and fresh vegetables; storage of frozen foods and K-Lair, dormitory grill.

31. *Football Building*—Lecture room, trainer's rooms, equipment, showers, locker rooms, laundry and handball courts.

32. *Fraternity Row*—Includes Lambda Chi Alpha, Phi Sigma Kappa, Pi Kappa Alpha, Kappa Sigma, Sigma Chi and Alpha Gamma Rho fraternity houses, Kitten Lodge (freshman football players), and Wildcat Manor (varsity football players). Other fraternities have houses in or near campus area.

33. *Frazee Hall*—Dean of University Extension, Department of History, School Relations and Student Loans.

Funkhouser Building—See Biological Sciences Building.

34. *Haggin Hall*—Single student housing.

17