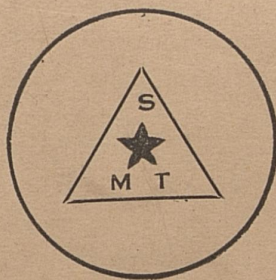


PROCEEDINGS
OF THE
SECOND ANNUAL SESSION
OF THE
Grand Temple and Juveniles
OF KENTUCKY



Grand Temple of Kentucky
Held at Madisonville, Ky., August 11th to 14th, 1914

STATE OFFICERS

Minutes Compiled by M. L. Brooks and E. B. Brown.

MRS. M. E. WHITLOW, N. G. P.

MRS. E. G. BALKMAN, S. G. P.

MRS. E. A. WATKINS, N. G. S.

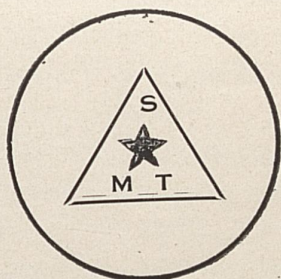
MRS. ADA PULLEN, D. S. G. P.

MRS. M. L. BROOKS, S. G. S.

MISS E. B. BROWN, A. S. G. S.

MRS. M. F. CHATMAN, Chr. B'd Mgrs.

PROCEEDINGS
OF THE
SECOND ANNUAL SESSION
OF THE
Grand Temple and Juveniles
OF KENTUCKY



Grand Temple of Kentucky
Held at Madisonville, Ky., August 11th to 14th, 1914

STATE OFFICERS

Minutes Compiled by M. L. Brooks and E. B. Brown.

MRS. M. E. WHITLOW, N. G. P.

MRS. E. A. WATKINS, N. G. S.

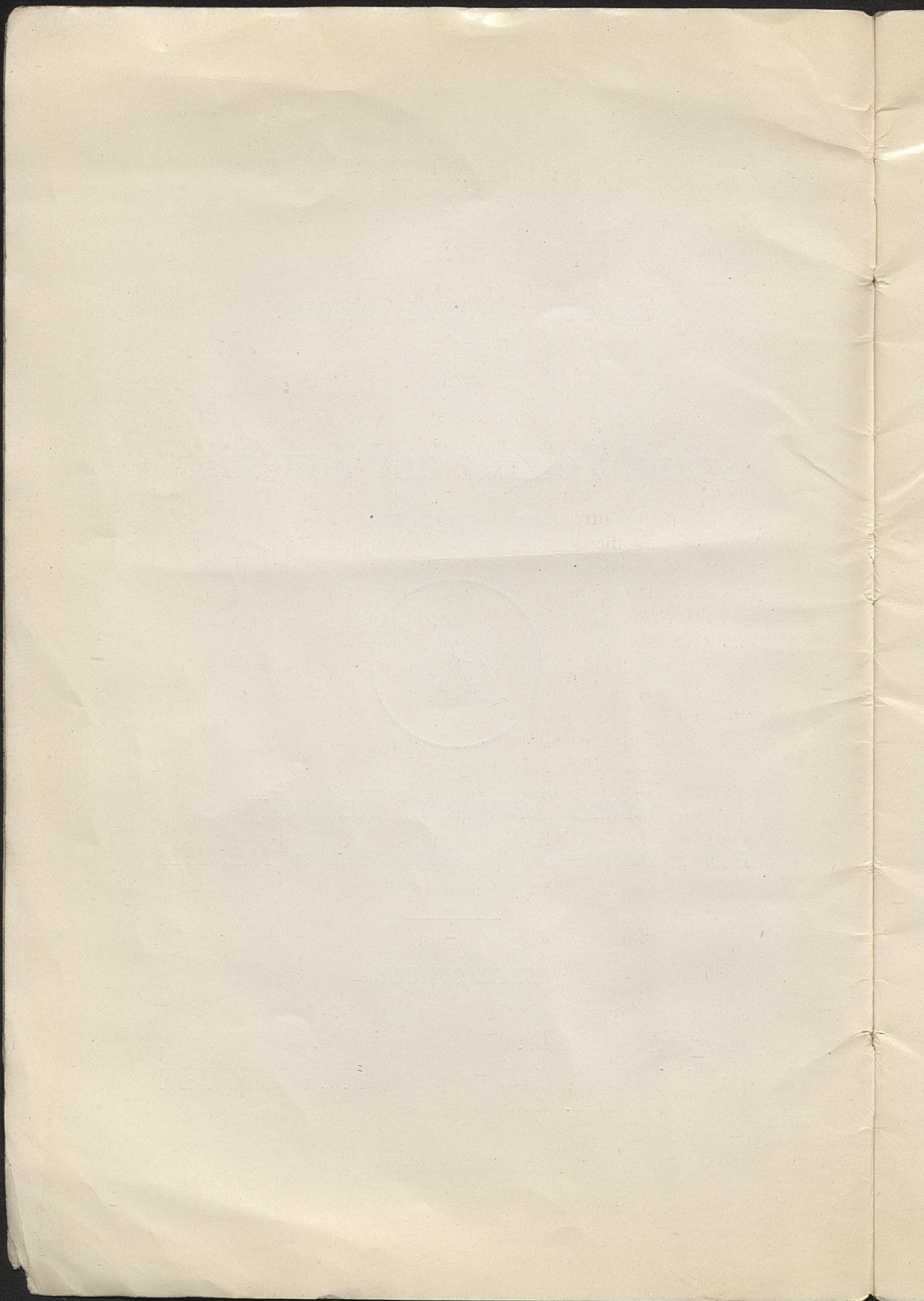
MRS. M. L. BROOKS, S. G. S.

MRS. E. G. BALKMAN, S. G. P.

MRS. ADA PULLEN, D. S. G. P.

MISS E. B. BROWN, A. S. G. S.

MRS. M. F. CHATMAN, Chr. B'd Mgrs.



MINUTES.

FIRST DAY—MORNING SESSION.

Madisonville, Ky., August 11, 1914.

The Second Annual Session of the State Grand Temple, Sisters of the Mysterious Ten, was called to order at 12 o'clock, noon, by Grand Princess Sister Edmonia G. Balkman, at East View Baptist Church.

Roll of officers called and all responded save Sister Susie Cabel, Jr. Marshall. Sister Gabrella Gladdish, of Earlington, was appointed to fill the vacancy. The Assistant Grand Secretary being late, Sister Mary Wilson, of Louisville, was appointed temporarily.

Grand Chaplain, Sister Henrietta Sawyers, read from Gen. 17:1-4, led in singing "And are we yet alive," and then offered a fervent prayer.

The following committees were appointed:

On Rules—Sisters L. D. Jackson, Alice Goodloe, Emma Coleman, Mary E. Scott and Laura Allen.

On Credentials—Sisters Bessie Ballard, Sallie Marshall, Anna Ayers, Lizzie Ellis, Anna Wilson, Lizzie Petty and Bettie Thompson.

On Greetings—Sisters Laura Lee, Mollie Williams and E. B. Brown.

The committees were given fifteen minutes in which to prepare their reports.

The report of Committee on Rules was read and adopted in sections. See report.

Grand Temple adjourned in regular form to meet at 2:30 p. m.

SISTER EDMONIA G. BALKMAN, Grand Princess,
SISTER MARY L. BROOKS, Grand Secretary,
SISTER E. B. BROWN, Assistant Grand Secretary.

FIRST DAY—AFTERNOON SESSION.

Madisonville, Ky., August 11, 1914.

The Grand Temple was called to order at 2 p. m. Grand Princess in the chair. Opened in brief. Chaplain led in singing "Blest be the Tie."

Minutes of the morning session were read and adopted.

The motion carried that all officers who are late at roll call shall be fined 10 cents.

A letter of greetings from National Grand Princess, M. E. Whitlow was received and read. On motion of Sister Martha V. Webster, carried, the Temple arose and responded with National Grand Honors.

The Committee on Dedication arrived and were given grand honors. "Blest be the Tie," "All Hail the Power of Jesus' Name," were sung. Rev. L. F. Howard read 1 Cor. 13:1-2; Rev. G. W. Moore read 1 Cor. 14:20; Rev. Dr. S. A. O'Neal read 1 Col. 1:1-5; Rev. G. T. Britt read 24 Psalm 1:2; other members of the committee, Revs. P. W. Garrett, David McFarland and J. L. Thompson, Chairman. After dedicating the building to the honor and glory of God and for the business of the Grand Temple, the committee awaited the arrival of the Grand Lodge. Grand Master W. H. Ballard stated the object of the joint meeting, viz: to hear the annual reports of the Grand Lodge officers.

In a very eloquent speech Bro. L. R. Diggs extended greetings from the Grand Lodge to the Grand Temple. Other members of the committee were: Bros. W. A. Gaines and W. R. January. Response by Sister Martha V. Webster, ex-National Grand Princess. "Take the Name of Jesus With You," was sung.

Bro. E. E. Underwood, Chairman of Committee on Grand Officers' Reports, was called to the chair. Grand Chaplain J. L. Thompson invoked divine blessing and led in singing, "The Old Account was Settled Long Ago." Brother Underwood made a few remarks and then introduced Grand Master W. H. Ballard, who read a very interesting and instructive report.

The Grand Princess was next introduced and made a brief but encouraging report.

The reports of D. G. M. G. T. Haliburton, Grand Treasurer G. W. Glass, Grand Secretary H. C. Russell and E. B. Davis Chairman Board of Managers, were read and referred to committee on Grand Lodge and Grand Temple reports. See report.

Madisonville, Ky., August 11, 1914.

To the officers, members and representatives of the State Grand Temple of Kentucky, of the Order of the Sisters of Mysterious Ten, Greetings.

Dear sisters, we meet today after the lapse of twelve months of fleeting time, and through the mercies of a kind father, once more in Grand Temple, our object in thus meeting is varied. After one year's separation, we want to exchange friendly greetings, we want to look back over perils surmounted, and difficulties overcome; our success and failures; and deliberate and advise for the better, and further advancement of our beloved order. Since we met last, many have been the changes; some of our loved ones have crossed the river of death. Among the many, who have fallen from rank, we mention the name of Sister Tennie Taylor, who entered into rest last October. She was the mother of St. Mary's Temple No. 2, and helped organize that Temple in August, 1876. We can say peace to their ashes. Dear sisters, I trust that we have come from our various Temples, with an eye single to the good that we can do for the uplifting of the Order, and to encourage the sisters throughout the state in their weak endeavor. I have always felt that ours was a Christian institution, whose principles were to uplift and advance those who were endeavoring to establish themselves and labor for the Order's best good; as delegates and officials, we ought to study the needs, and discuss the ways of carrying it on, in the best possible way that is to the Order's advancement. I consider it a pleasure and worth to look into your faces, to grasp your hand, and hear your voices, to catch new ideas and inspiration by association; and I hope that we

are all here with warm hearts and minds filled with thoughts that will do each other good. These are days of developing great and noble things, if we only seize the opportunity. None of us live to ourselves, however much our possessions are, or how great our knowledge of wisdom, we are yet dependant upon the masses for help. Our small Temples do their part in contribution and should have an equal chance of hearing. In our arguments, we ought to proceed without personation and feeling, and however much we differ in opinion, let the right predominate. We are not all constituted alike, hence, can not see alike, but we can blend our ideas together for the betterment of the people we represent, and the uplift of the nation. Dear sisters as this year was the Grand Master's year, we had but very little to do, however, I corresponded with a good many Temples. Some replied, and some did not; however, those that did reported progress in every way, and that they had worked very hard and gotten in a good many new members; and all was in peace and harmony. That was very encouraging to me. I have not heard any thing from our Juvenile Temples. I would say to the Mother Matrons, much of the success and prosperity of the future Temple depends upon our efforts and interest in the little ones. In the Juvenile department we are laying the foundation of the Sisters of the Mysterious Ten for years to come. The boys and girls of today will be the men and women of tomorrow. I want to excite you to more interest in the work in the future than has been manifested in the past, in building up this department, and enlarging its borders to strengthen the stakes our founders have already driven. Let me say dear sisters, grow not weary in well doing. Our watchword should be ever forward, onward, though the skies may not always be promising, and the clouds may seem obscure, and our pathway dark at times, only courage, perseverance, and a good will is needed to insure success. Let each one feel that they have their own mission to perform; take up the annals of history; scan the noble and heroic deeds of those who have fallen, and you will find that each has made his own foot prints on the sands of time, thus it is essential that each do their own work, however small it be, some eye sees thy labor.

Trusting that this session may be one of harmony and peace, and may the Holy Spirit guide our steps aright.

Yours in J. M. T.,

EDMONIA G. BALKMAN.

The printed reports of the Grand Secretary and Grand Treasurer were distributed.

After announcements Grand Temple adjourned to meet Wednesday at 9 a. m.

SISTER EDMONIA G. BALKMAN, Grand Princess.

SISTER MARY L. BROOKS, Grand Secretary.

SISTER E. B. BROWN, Assistant Grand Secretary.

SECOND DAY—MORNING SESSION.

Madisonville, Ky., August 12, 1914.

The Grand Temple was called to order at 9 a. m., with the Grand Princess in the chair. "Take the Name of Jesus With You," was sung. Chaplain led in prayer. Roll of officers was called. Minutes of the previous afternoon session were read and adopted.

The Committee on Credentials was called and made a partial report, same was received and committee continued. On motion of Sister M. L. Brooks, carried, the following Committee on Recommendation, relative to one sister representing more than one Temple, was appointed. Committee: Sisters Irene Philips, Emma Jackson and Sarah Smith. Sisters Mattie Burton, Anna Swanigan and Lizzie Dickerson were appointed a committee to investigate the credentials of Brothers J. W. Roberts, of Lebanon Juvenile No. 30, and W. H. Brown, of Rising Sun Juvenile No. 2, Mt. Sterling.

Grand Temple recessed for fifteen minutes after which the special investigating committee reported the ruling of Grand Master Ballard to the effect that said brothers' credentials are unconstitutional and must therefore be rejected.

The following committees were appointed:

Resolutions—Gladys Alexander, Lutetia Ransom, Emma Turner, Anna Johnson, Beulah Puckett, Phoebe Clark, Sarah A. Smith, Lena Britt, Anna Swanigan, Sallie Marshall, Lucy Green, Lillie Campbell.

Temple Returns—Nannie Fields, Gabrella Gladdish, Mollie Burley, Ethel Jones, Mary E. Wilson, Lucy Stevenson, Pauline Carnell, Pearl Minor, Georgia Thomas, Mattie Burton, Lucy Hughes, Anna Rice, Hattie Hornbeake, E. B. Jackson, Rosa Brooks.

Grievance—Mollie Williams, L. C. Harding, Sallie Beasly, Anna Smith, Matilda Johnson, L. D. Jackson, Mary Foster, Anna Wilson, Mary A. Lilly.

Finance—Martha V. Webster, Rosa A. Watkins, Cora Richardson, Ophelia Atkins, Laura Allen, Anna Wilson, Ida A. Silvey, Carrie R. Lane, Lettilla V. Ranel.

Condolence—Louisa T. Evans, Emma Bibb, Myrtle Humphry, Ellen T. Straws, Celia Tensly, Jessie B. Garr, Emma Dryer, Florida Miller, Henrietta H. Gibson, Frances Evans, Queen Tisley.

Grand Officer's Report—Mayme A. Romans, Lethia Cook, Minnie Dixon, Millie Suggs, Cordelia Clark, Effie Young, Lethia Miller, Lulu Fuell, Alice Gilbert, Mary F. Chatman, Myrtle Dickerson, Unice Boyd.

Courtesy—Nannie Jackson, Mollie Parrish, Anna Smith, Viola Hughes, Alberta Steward, Lucile Nelson, S. B. Ready, Louella Jackson, Lubby Hall, Pearl Mixir, Hattie B. Banion, Precilla Sandusky, Clara Williams, James Lewis.

State and Country—Elizabeth Head, Lizzie Dickerson, Mary E. Wynn, Mayme Lewis, Mary Tucker, Anna L. Minor, Leona Mills, Fannie Redding, Eliza Crump, Mattie B. Blaxter, Mattie Fisher, Lethia Miller, Alvey Jackson, Ella Howard, Susie Jacobs.

Sister Emma Drye, of Hustonville, reported the loss of her purse containing railroad ticket and \$15.00. Grand Princess announced the sister in distress and asked for a collection which was taken to the amount of \$11.30. Sister Drye thanked the sisters from the depths of her heart for such a liberal contribution.

Mr. Harden Talbott, reporter and special representative for "The Frankfort Star," asked for a report of our proceedings for publication in the local paper and others.

Grand Temple adjourned in regular form to meet at 2 p. m.

SISTER EDMONIA G. BALKMAN, Grand Princess.
SISTER MARY L. BROOKS, Grand Secretary.
SISTER E. B. BROWN, Assistant Grand Secretary.

SECOND DAY—AFTERNOON SESSION.

Madisonville, Ky., August 12, 1914.

Grand Temple was called to order at 2 p. m. Grand Princess in the chair. Opened by singing "When the Roll is Called Up Yonder." Prayer by the Chaplain. Roll of officers was called. Minutes of the morning session were approved.

The report of special committee relative to one sister representing more than one Temple was read and received. The motion carried that a sister shall represent but one Temple, viz: that in which she pays dues.

Grand Princess presented and sold the national official organ, "The Friendship Herald." Committee on Finance made a partial report and was continued. Recess.

Finance Committee returned and reported several Temples debtor to the Grand Lodge. The Chairman, Sister Martha V. Webster, made the final call for settlement.

Grand Princess announced the election of officers for Thursday morning. After other announcements Grand Temple adjourned in regular form to meet Thursday 9 a. m.

SISTER EDMONIA G. BALKMAN, Grand Princess.
SISTER MARY L. BROOKS, Grand Secretary.
SISTER E. B. BROWN, Assistant Grand Secretary.

THIRD DAY—MORNING SESSION.

Madisonville, Ky., August 13, 1914.

The Grand Temple was called to order at 9 a. m., with the Grand Princess in the chair.

Opened in due and regular form. "God Will Take Care of You," was sung. Chaplain led in prayer. Minutes of the previous afternoon session were read and adopted.

The messenger announced the arrival of Grand Master W. H. Ballard. Grand honors were given Sister Martha V. Webster. Chairman read the report of the Committee on Constitution and By-Laws. Adopted. See report.

The Grand Master announced that the Grand Lodge had decided, unanimously, to grant the Temple full control, save in the Endowment Department. Sisters Mary L. Brooks, Martha V. Webster, Bessie Ballard, Georgia Thomas and M. H. Roach made a few remarks.

The motion carried, by a standing vote, that Grand Master Ballard be made an honorary member of the Temple. Sister M. L. Chatman reported nine additional Temples and Juveniles, who had paid up all indebtedness.

The Chairman of the several committees called their members together for consultation.

Sister Mary E. Wynn, Chairman of Committee on State and Country, reported the condition of the Temples in first class condition. See report. Sister Louisa T. Evans, Chairman of Committee on Condolence, reported eighty-two sisters, two brothers and two juveniles deceased during the year. See report and list.

Sister Gladys Alexander, Chairman of Committee on Resolutions, made their report. Received and adopted. See report.

The messenger announced the presence of H. C. Hall, who by the permission of the Grand Princess, addressed the Grand Temple in the interest of the Mammoth Life Insurance Co., of Georgia, and asked for the indorsement of the Grand Temple. Sisters Clara Williams moved and seconded by Sister Bessie Ballard that we receive and indorse Mr. Hall's statement and company.

Prof. Collins, of State Normal, addressed the Grand Temple in the interest of education and left a few souvenirs for distribution.

Sister S. B. Ready, Secretary of Committee on Courtesy, reported twenty-four visiting sisters in attendance to the Grand Temple. See list. Sister M. V. Webster, Chairman of Committee on Finance, reported the brothers have allowed us eleven cents per member.

Sister Webster read a telegram from the L. & N. Railroad Co., relative to the rebate on railroad fare, also telegram received by Bro. W. A. Gaines, announcing the death and burial of Bro. M. R. Perry, Past National Grand Secretary and Grand Master of Arkansas.

The Finance Committee was continued until their work is completed.

On motion of Sister Hattie Baker, carried that we present Grand Master W. H. Ballard a token of our appreciation.

Temple adjourned to meet at 2 p. m.

SISTER EDMONIA G. BALKMAN, Grand Princess.

SISTER MARY L. BROOKS, Grand Secretary.

SISTER E. B. BROWN, Assistant Grand Secretary.

THIRD DAY—AFTERNOON SESSION.

Madisonville, Ky., August 13, 1914.

The Grand Temple was called to order at 2 p. m., Grand Princess in the chair. Opened by singing "Praise God From Whom All Blessings Flow;" Chaplain led in prayer, signs were given, Temple then opened for business. Minutes of the morning session were read and adopted, with necessary corrections.

The charter issued August 12, 1913, at Georgetown, was read by the Grand Secretary and received.

Sister Nannie Fields, Chairman of Committee on Temple Returns, made their report showing there to be eighty-six Temples with a membership of 3,446; three Royal Houses,

membership 185; twenty-four Juveniles, membership 438, in the State.

Committee reported \$229.50 for salary, per diem, etc. See report.

On motion of Sister M. L. Chatman, carried by a vote of 47 to 38, the members of the Finance Committee were allowed \$2.00 each for their services.

Sister Mollie Williams, Chairman of Committee on Grievance, reported no grievance. See report.

Sister Mayme A. Romans, Chairman of Committee on Grand Officers' Reports, reported favorable on said reports. See report.

The recommendation of the Finance Committee to allow the Assistant Grand Secretary one-half salary was reconsidered, and the motion carried unanimously, that the Assistant Secretary be allowed full salary. The banner for the Juveniles having the largest number of members was awarded, Mayflower Juvenile No. 89, of Covington, having a membership of eighty-four.

The hour for election of officers having arrived, Sister M. V. Webster made the motion, carried by a majority vote, that the present officers be retained for the years 1914 and 1915. The Temple arose and gave the grand honors.

Brothers H. C. Russell, Grand Secretary, and I. B. Par-rant, of Lawrenceburg, visited and addressed the Grand Temple. Bro. Russell presented the finance, \$389.00.

Sisters Edmonia G. Balkman, Martha V. Webster and Mary L. Brooks were appointed fraternal delegates to the National Grand Temple in 1915.

The motion carried that the Grand Secretary and Grand Treasurer be bonded in a regular bonding company.

The motion carried that \$10.00 be spent for the purchase of a suitable token of appreciation for Grand Master Ballard. \$7.50 in cash was collected, the balance, \$2.50, to be drawn from the treasury.

Sister M. L. Chatman, Chairman Board of Managers, was appointed to make the purchase. Sister M. L. Chatman read

a resolution of thanks from the Board of Managers. See resolution.

The hour to adjourn having arrived the time was extended one hour.

The memorial exercises for eighty-two sisters, two brothers and two Juveniles were begun. Sister Hattie P. Payne presided at the organ. "Nearer My God to Thee" was sung, prayer by the Chaplain. Solo, "Dear Lord Remember Me," by Sister Bessie Ballard. Remarks on behalf of the Temple by Grand Secretary M. L. Brooks. "Asleep in Jesus," "Rock of Ages," were sung. Appropriate remarks by the sisters. Song, "I Know My Heavenly Father Knows." On motion of Sister Martha V. Webster, carried, the names of Bro. M. R. Perry, Sisters Blanche Charleston and C. V. Ramsey were included "in memoriam."

On motion of Sister R. A. Watkins, carried, the following sisters were elected as alternates to the National Grand Temple, viz: E. B. Brown, M. F. Chatman and Ada Pullen.

The Grand Princess appointed Sister Nannie Fields State Organizer. (Names of compiling committee omitted.)

Installation of officers was next in order. The elective officers were regularly installed by Sisters M. V. Webster and Bessie Ballard, conductor. The officers were then presented to the Grand Temple and given grand honors.

The motion carried that we pay the installing officers one dollar each. The motion also carried that we pay the organist, Sister Hattie P. Payne, two dollars for services rendered during the sessions.

The final motion carried that we close with the fraternal hand shake.

Receipts during the grand session amounted to \$408.00, collected as follows:

From Grand Lodge	\$389 00
For Sister in distress	11 30
for Grand Master Ballard.....	7 50
From fines	20

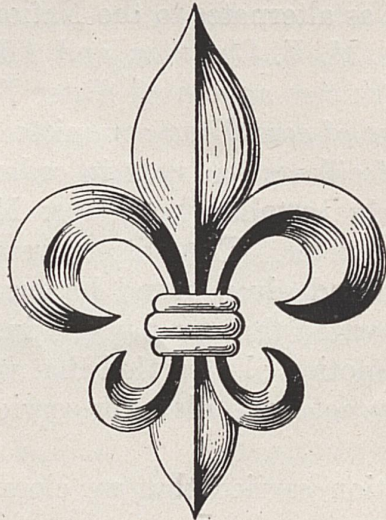
Total \$408 00

The second annual session of the State Grand Temple adjourned sine die.

SISTER EDMONIA G. BALKMAN, Grand Princess.

SISTER MARY L. BROOKS, Grand Secretary.

Sister E. B. BROWN, Assistant Grand Secretary.



REPORT OF COMMITTEE ON FINANCE.

	Stationery	Salary	Per Diem	Mileage	Board	Total
Mrs. E. G. Balkman, G. Princess.....	\$ 50	\$25 00	\$5 98	\$5 00	\$36 48
Mrs. Ada Pullen, V. G. Princess.....	5 00	5 02	5 00	15 02
Mrs. M. L. Brooks, G. Secretary.....	10	25 00	8 98	5 00	39 08
Miss E. B. Brown, A. G. Secretary.....	20	10 00	11 58	5 00	26 78
Mrs. Lillie F. Harris, G. Treasurer.....	5 00	9 15	6 00	20 15
Mrs. M. F. Chatman, C. G. B. Mgrs.....	2 00	5 98	5 00	12 98
Mrs. Mary A. Lilly, G. B. Mgrs.....	2 00	1 40	4 00	7 40
Mrs. Mayme A. Romans, G. B. M.....	2 00	7 18	5 00	14 18
Mrs. Louisa T. Evans, G. B. M.....	2 00	11 40	5 00	18 40
Mrs. Mollie Williams, G. B. M.....	2 00	5 98	5 00	12 98
Mrs. H. C. Sawyer, G. Chaplain.....	9 05	5 00	14 05
Mrs. Eliza Arnett, Sr. Marshal.....	2 00
Mrs. Gabrella Gladdish, Jr. Marshal....	2 00
Mrs. P. A. Bacon, I. G. Keeper.....	2 00
Mrs. E. T. Straws, O. G. Keeper.....	2 00
Mrs. W. E. Cantril, Messenger.....	2 00
Mrs. Mary B. Foster, Joshua.....	2 00
Total	\$12 00	\$217 50
						12 00
Grand Total						\$229 50

COMMITTEE REPORTS

Yours in J. M. & T.,

MARTHA V. WEBSTER, Chairman,
R. A. WATKINS,
ANNIE WILSON,
CARRIE R. LANE,
LETTILLA V. RANELS,
CORA RICHARDSON,
LAURA ALLEN,
IDA A. SILVEY,

Committee on Finance.

REPORT OF COMMITTEE ON GRIEVANCE.

We, your Committee on Grievance, are pleased to say that we have no grievance to report.

Yours in J. M. & T.,

MOLLIE WILLIAMS, Chairman.
L. C. HARDING,
SALLIE BEASLEY,
ANNIE SMITH,
MATILDA JOHNSON,
L. D. JACKSON,
MARY FOSTER,
ANNIE WILSON,
MARY A LILLY.

REPORT OF COMMITTEE ON COURTESY.

The Committee on Courtesy introduced the following visitors:

Sisters Bettie Kerby, Agnes Durham, Elenora Lee, Hattie Cosby, Lelia Jackson, Esther Brown, all of Louisville.

Sisters H. and M. L. Roach, of Cadiz.

Sisters Hattie Patten, Pearl Childress and Mollie Coffin, of Earlington.

Sisters Lizzie Esther, Rodia Bones, of Madisonville.

Sisters Nellie Wyatt, of Fredonia; Maggie Pickens, of Marion; Bettie Quisenburg, of South Carrollton; Cordelia Bailey, of Morton Gap; Nora Banks, of Henderson; Emma Morton, Dawson Springs; Sophia McClure, of Carytown; Mildred Webb, of Harden; Minnie Elliot, of Greensville; Desdemonia Jackson and Susie Bailey, of Elkton.

Yours in J. M. T.,

S. B. READY, Chairman,
 NANNIE JACKSON,
 MOLLIE PARRISH,
 ANNA SMITH,
 VIOLA HUGHES,
 ALBERTA STEWARD,
 LUCILE NELSON,
 LOUELLA JACKSON,
 LUBBY HALL,
 PEARL MUIR,
 HATTIE B. BANION,
 PRECILLA SANDUSKY,
 CLARA WILLIAMS,
 JAMES LEWIS.

Madisonville, Ky., August 13, 1914.

S. G. P. Officers and members of the S. G. T.:

Another twelve months have passed into eternity and we have been spared to meet together in this our Second Annual Session. We thank the Grand Temple for the honor conferred on us in electing us the G. B. of M. As the S. G. T. were not in a position to work there was no work for the board. But at the last session of the S. G. T. in Georgetown you intrusted to our keeping the Juvenile banner which we have carefully kept, and having been re-elected will try by the help of the Lord to

discharge all the duties of the office. Again thanking you for the honor of the office, we are,

Yours in J. M. T.,

MARY F. CHATMAN, Chairman,
 MARY A. LILLY,
 MAMIE ROMAN,
 LOUISA EVANS,
 MOLLIE WILLIAMS.

REPORT OF COMMITTEE ON STATE AND COUNTRY.

We, your Committee on State and Country, beg leave to make the following report:

We find most of the Temples O. K. in their endowment, and receipted for the same.

All Temples report a good membership and everything in good financial condition locally all over the state.

Yours in J. M. & T.,

MARY E. WYNN, Chairman,
 ELIZABETH HEAD,
 LIZZIE DICKERSON,
 MAYME LEWIS,
 MARY TUCKER,
 ANNIE L. MINOR,
 LEONA MILLS,
 FANNIE REDDING,
 ELIZA CRUMP,
 MATTIE B. BLAXTER,
 MATTIE FISHER,
 LETHIA MILLER,
 ALVEY JACKSON,
 ELLA HOWARD,
 SUSIE JACOBS.

Madisonville, Ky., August 13, 1914.

To the officers and members of S. G. T.:

We, your Committee on Grand Officers Reports beg leave to submit the following report:

We have carefully examined the able and carefully prepared report of our State Grand Princess and find it to be one of careful thought and preparation. We are in perfect harmony with recommendations and trust that all delegates will use their influence in organizing juvenile Temples throughout the state.

MAYME A. ROMAN,
LUTETIA COOK,
MINNIE DIXON,
MILLIE SUGGS,
CORDELIA CLARK,
EFFIE YOUNG,
LETHA MILLER,
LINE FUELL,
ALICE GILBERT,
MARY F. CHATMAN,
MYRTLE DICKERSON,
UNICE BOYD,

Committee on Grand Officers Report.

RESOLUTIONS.

Madisonville, Ky., August 13, 1914.

We, your Committee on Resolutions, beg leave to submit the following report:

1. Resolved, That the State Grand Officers of the State Grand Temple have entire control of all matters concerning the state work, except the Relief Bureau, and be it Resolved, That that Department be controlled as heretofore.
2. Resolved, That we hold a memorial service some time

during the meeting of the State Grand Temple in respect of our departed sisters.

Whereas, it has pleased our State Grand Lodge to meet in Madisonville, where towering factories are kissing the blue sky, whose Honorable Mayor telegraphed his approval one year before this meeting, and since this session has repeated the invitation and welcome, be it

Resolved, That we extend to them our most heartfelt gratitude for all their kindness and care during this Grand Temple session, be it further

Resolved, That we thank the Janitor for her work during our meeting here and that we donate an offering for the same.

GLADYS ALEXANDER,
EMMA TURNER,
BULAH PUCKETT,
SARAH A. SMITH,
LENA BRITT,
ANNA SWANIGAN,
PHOEBIE CLARK,
ANNA JOHNSON,
LUCY GREEN,
LILLIE CAMPBELL,
LETITIA RANSOM.

CONDOLENCE.

We, your Committee on Condolence, beg leave to make the following report:

Whereas, Death, the destroyer of the human family, has come into our midst since our last meeting, as an unwelcome visitor, and has taken so many of our dear beloved sisters who mingled with us in our various Temples, but now whose voices are still. They are now marching up to the triangle, saluting the Supreme Being, Jesus Christ, the Saviour.

Be it resolved, "That we will ever remember and cherish their memory in our hearts."

1913 IN MEMORIAM 1914

“They rest from their labors,
And their works do follow them.”

St. Mary No. 35, Lexington.	St. Mary No. 32.
Nannie Woodard,	Kittie Jones,
Fannie Zance,	Matilda Lowe.
Alice Miller.	Young's Temple No. 44,
St. Rebecca No. 49, Lexington.	Maysville.
	Phoebe Steward.
Rhodia Ellis,	Pride Temple No. 18, Mor-
Eliza Morton,	ganfield.
Mariah White Grant.	Rixie Finley.
St. Venus No. 50, Lexington.	Ruth Temple No. 22, Frank-
Emma Coleman.	fort.
Star of Esther No. 30, Louis-	Mary Burley.
ville.	
Maggie Duff.	Geneva Temple No. 73, Dan-
	ville.
Friendship No. 4, Louisville.	Hattie Hockins,
Mildred Samuels,	Bettie J. Willson.
Fannie Lyles.	
Eastern Star No. 21, Louis-	Lula Temple No. 128,
ville.	Princeton.
Anna Williams.	Fannie Webb.
Star of the West No. 13, Louisville.	Emeral No. 81, Princeton.
	Ellen Crider.
Lulu Cross.	Union No. 11, Shelbyville.
Zion Temple No. 1, Louis-	Georgia A. Davis,
ville.	Charlotte Tolbert.
Jane Ralston,	Christian Temple No. 59,
Diana Brookins,	Gordonville.
Susie Payne,	Belle Page.
Emily Bryant.	
Morning Star No. 42, Elk-	Rising Sun No. 14, South
ton.	Carrollton.
Jennie Sebree.	Lucy Batsel.
Golden Rule No. 85, Pa-	Pearl of Trigg No. 37,
ducah.	Cadiz.
Cora Hunt,	Lizzie B. Shera,
Amanda Miller.	Catherine Manning.

IN MEMORIAM--Continued.

St. Mary No. 70, Cynthiana.	Pride of Mercer No. 56, Har- rodsburg.
Ellen Brooks,	Caroline Williams.
Mary Fields,	
Marguerite Hudson.	St. Mary's Temple No. 2, Louisville.
Musadora No. 38, Hopkins- ville.	Tenie Taylor, Julia Collier,
Nellie Withers.	Lizzie Campbell, Rachel Murry, Brother Charles Moore.
Independent Star No. 117, Stanford.	
Bertha Lackey.	
Liberty Bell No. 109, Allens- ville.	Galilee Temple No. 34, Paris. Sarah Bedford, Mariah Johnson, Mary Henderson.
Tibitha Muir, Millie Tandy.	
Queen Esther No. 24, Hen- derson.	Union Star No. 108, Elkins. Caroline Turner, Rosa Tribble, Madie Bush.
Sallie Cooksey, Vina Alexander.	
Walker Temple No. 92, Carlisle.	Christian Temple No. 47, Providence.
Clara Davis.	Maggie Floy.
Love & Friendship No. 31, Lafayette.	
Mina Burks.	Good Sheperdess No. 11, Louisville.
Adelia Temple No. 36, Leb- anon.	Annie Stevenson.
Henrietta Swan.	Melvina No. 54, Horse Cave. Susie Willson.
St. Martha No. 8, Owens- boro.	
Millie Griffieth, Julia McFarland, Antonia Powell, Marinda Henderson.	Pride Temple No. 18, Mor- ganfield. Boxey Finney.
Esther Temple No. 5, Shel- byville.	Star of Carthage No. 9, Louisville.
Martha Weaver.	Alice Coleman.

IN MEMORIAM--Concluded.

Electra Temple No. 12, Winchester. Bell of Woodford No. 15, Versailles.

Sarah Mundy, Bettie Tucker.

Henrietta Bell, Rebecca Temple No. 113, Peedee.

Flora B. Merritt, Louisa Landerman.

Sarah Anderson. Olive Branch No. 29, Louisville. Bell Temple No. 39, Madisonville.

Rosa Brooks. Maderia Woods.

St. Frances No. 10, Mt. Sterling. JUVENILES.

Nannie Moody, Gaines Youth No. 37, Cadiz.

Belle Kelly. America Martin.

Covington Temple No. 6, Covington. Busy Bee No. 34, Winchester.

Brother Abram Brown. Annie Clinkenbeard.

St. Rose No. 17, Louisville. M. R. Perry, Nat. Gd. Sec'y. Grand Master of Ark.

Maggie Simpson, Blanche Charleston.

Lucy Childress, C. V. Ramsey, Alabama.

Laura Thomas, Yours in J. M. & T.

Henrietta Coleman, LOUISA T. EVANS, Chairman,

Anna Burris. EMMA BIBBS,

MYRTLE HUMPHREY,

ELLEN T. STRAUSS,

CELIA TENSLEY,

JESSIE B. GARR,

EMMA DRYE,

FLORIDA MILLER,

HENRIETTA H. GIBSON,

FRANCES EVANS,

QUEEN V. TISDALE,

Committee on Condolence.

TO THE GRAND STATE PRINCESS, OFFICERS AND MEMBERS OF THIS GRAND TEMPLE:

We, your Committee on Temple Returns, beg leave to make our report:

No. Temple.	Location.	Princesses	Secretary.	Membership	Disbursement	Receipts	Value of Property
1. Zion	Louisville	Edmonia G. Balkman.	Laura B. Jones	160	\$ 779.26	\$ 811.55	\$4000.00
2. St. Mary's	Louisville	Cordelia Clark	Fannie Dupee	193	1525.11	1525.78	900.00
4. Friendship	Louisville	Mary Foster	Esther Brown	50			
5. Esther	Shelbyville	Emma A. Coleman	Fannie Redden	108	535.05	711.25	900.00
6. Covington	Covington	China Robinson	E. B. Brown	49			200.00
7. Talleviate	Standfort	Laura McCalister	Ophelia Adkins	35	142.50		
8. St. Martha	Owensboro	Mary B. Foster	Fannie Claybrook	123	1026.12	1026.12	2500.00
9. Star of Cartage	Louisville	Lucy Green	B. Kirkpatrick	43	142.70	157.74	1500.00
10. St. Francis	Mt. Sterling	F. B. McGowan	Mary Tucker	70			
11. Union	Shelbyville	M. D. Romans	H. R. Chinn	79			800.00
12. Electra	Winchester	Nellie Mance	Josie Wilson	114	177.00		3000.00
13. Star of the West	Louisville	Hanah Ball	Laura B. Lee	74		389.85	850.00
14. Rising Sun	So. Carrolton	Winnie M. Moorman	Effie Young	16	21.00	26.00	
15. Belle of Woodford	Versailles	Annie E. Wilson	Lethia Miller	75	160.00	154.50	2000.00
16. Good Shepherd	Louisville	E. J. Jackson	M. B. Blaxton	98	500.00	450.00	200.00
17. St. Rose	Louisville	Emma Swanigan	Fannie L. Berry	82	470.85	468.24	1100.00
18. Pride	Morganfield	Hattie Hornbeak	Annie Wilson	55	230.08	134.74	
20. Zion	Frankfort	Kitty B. Halleck	Mary L. Brooks	30	310.00	300.00	950.00
21. Eastern Star	Louisville	M. F. Chatman	Mary Lowe	44	350.00	315.00	550.00

22. Ruth	Frankfort	Lizzie Ellis	41
24. Queen Esther . . .	Henderson	Rosa Brooks	Irene Phillip	65	599.50	470.97	1250.00
25. Friendship	Louisville	Eliza Arnett	Annie J. Gates	56	168.80	141.80	1000.00
26. Magdalene	Danville	G. A. Allen	M. L. Doneghy	84	160.44	127.25	7000.00
28. Vashti	Louisville	M. B. Bulley	Gertrude Woode	23
29. Olivebranch	Louisville	Cora Richard	Mary E. Gibbs	38	118.85	114.85	650.00
30. Star of Esther . . .	Louisville	M. V. Webster	L. B. Clay	88	634.76	514.11	1050.00
31. Love and True . . .	Lafayette	Ella Williams	Zelpha McNeil	51	172.50	93.00	600.00
32. St. Mary	Paducah	Ada Pullen	Ethel Jones	111	511.13	513.59	232.00
33. Magdalene	Hanesville	Ophelia Danson	Mary Doyle	15
34. Gallilee	Paris	Cyntha Smith	Louisa Evans	84	465.05	510.14	4000.00
35. St. Mary	Lexington	Katie McPheeters	Patty A. Bacon	95
36. Adelia	Lebanon	Bettie J. Hughes	G. A. Thomas	58	295.00	270.00	600.00
37. Pearl of Trigg . . .	Cadiz	Susie A. Crump	Patsey Mayers	49	279.17
38. Musadora	Hopkinsville	Annie Rice	Jennie L. Pool	62	213.51	384.18	3000.00
39. Bell	Madisonville	50
40. Green River	Calhoun	Myrtle Griffeth	Myrtle Humprey	20	100.00	75.00	1000.00
41. Glass	Sommerset	Lula Woods	Priscilla Sandusky	47	3.50
42. Morning Star	Trenton	Lubbie Hall	Bulah Pucket	43	216.37	274.14	625.00
43. Susanah	Georgetown	Ella Scott	James B. Lewis	102	200.00	215.00	5000.00
44. Youngs	Maysville	Sallia Marshall	Lelia Green	37	90.00	78.95	700.00
45. Faithful	Davistown	G. L. Weathers	S. B. Ready	52	800.00
46. Star	Greenville	Martha McLean	Lizzie B. Pettee	23
47. Christian	Providence	Celia Tinsley	Ida B. Silvey	131.95	109.64	50.00
48. Forest	Earlington	G. Gladish	Lillie Campbell	51	116.80	108.55
49. St. Rebecca	Lexington	Lucy A. Stevenson	Mary E. Foid	79
50. St. Venus	Lexington	L. D. Jackson	Roseline Brown	121
51. Prosperity	Hustonville	Alice Frye	Jennie Anderson	38	75.89	5.00

No. Temple.	Location.	Princesses	Secretary.	Membership	Disbursement	Receipts	Value of Property
54. Melvinia	Horse Cave	Mollie Parish	Katie Taylor	30	1.00	40.00
55. Princes	Georgetown	Lillie T. Harris	Nannie G. Gillispie..	40
56. Pride of Mercer	Harrodsburg	Mary E. Scott	Alice Pitman	65
57. Goodwill	Mt. Sterling	Fannie Rogers	33	14.00
59. Christiana	Gordonsville	Elen Cole	13	600.00
60. Iwonder	Henderson	Hattie Payne	Florida Miller	37	136.75	1000.00
62. Zenobia	Littlerock	Mattie Fisher	Kizzie Simpson	32	68.65	13.27	1000.00
63. Peace	Henderson	Phoebe Clark	Mary Marlin	37	200.00
64. Faithful	Cadiz	Bulah Crenshaw	Lacy Hayden	25
65. Holly	Marion	Laura McCain	Nellie Cruce	12
66. Carmel	Covington	W. E. Cantrill	N. L. Fields	50	95.45
69. Dolls	Morton Gap	Cordis Bailey	Nannie Weaver	22	48.12	15.00
70. St. Mary's	Cynthiana	C. H. Bradshaw	G. L. Alexander	61	380.15	352.25
72. St. Rose	Corydon	Sophia McClure	69	98.65	90.83	1000.00
73. Genevia	Danville	Clarissa Custard	Sarah Smith	56
74. Victoria	Henderson	Alice Gilbert	Lucy Walker	31	150.00	300.00
75. Golden Crown	Erlanger	Ann Vinegar	Anna Johnson	11	2000.00
76. Salem	Millersburg	Bell Glenn	Letitia Ransom	64	479.19	700.00
79. Venus Star	Bloomfield	Fannie Calbert	Rhoda Grigsby	19	150.00	57.71	1000.00
81. Emerald	Princeton	Alvie Dotson	Della Tipson	65	153.78	128.98	2500.00
84. Alice Robert	Russellville	Queen Tisdale	Sarah Orndoff	35	80.76	53.78	800.00
85. Golden Rule	Paducah	Bettie Thompson	Tena Golden	94	250.00

87.	Elizabeth	Anchorage	Katie Lawrence	Jessie Garr	15			
89.	Ozetta	Perryville	Alice Goodloe	Rosa Street	42	50.00	75.00	800.00
92.	Walker	Carlisle	Bell Green	Ida Johnson	46	250.00	150.00	600.00
96.	Bulah	Dawson	Elizabeth Head	Enda Bridges	18		84.00	420.00
97.	Queen of Sheba	Covington	Hannah Davis	S. A. Smith	27	291.39	261.39	30.00
99.	Mayflower	Pewee Valley	Harriett Gibson	R. C. Flourney	19	150.00	75.00	400.00
107.	Silver Leaf	Ashland	Hannah Dawson	Maud Moore	12	13.25	16.50	
108.	Union Star	Elkins	Flora Thomas	Mattie Williams	61			500.00
109.	Liberty Bell	Allensville	Pearl Muir	Ethel Bell	53	213.78	201.20	400.00
112.	Pride of Garrard	Lancaster	Eugene McBeath	Malinda Hood	35			800.00
113.	Rebecca	Pee Dee	Dora Garnett	Lula C. Weathers	26	68.85	61.39	
114.	Satellite	Lawrenceburg	Mary Coleman	Laura Allen	38	68.86	88.96	2000.00
117.	Independent Star	Stanford	Cynthia Cook	Lutitia Cook	80	382.42	301.90	
121.	St. Elizabeth	La Grange	Alice Browning	Annie Minor	14	75.00		600.00
122.	Icy Sink	Smith Grove	Lena Britt	Francis White	20	70.90	75.50	400.00
126.	Howard	Fredonia	Susie Jacobs	Eula Bone	24		55.25	
128.	Lula	Princeton	Mary Jones	Kate Hobson	20		40.00	

ROYAL HOUSE.

No. Temple.	Location.	Queen	Secretary.	Mem.			
1.	King Ahasurus ..	Louisville	Ida Schribner	E. J. Jackson	85		
5.	Georgia A. Henderson	Covington	Katie Marshal	E. B. Brown	25		
18.	Golden Glow	Versailles	Lethia Miller	A. E. Wilson	75		

COMMITTEE.

N. L. Fields, Chairman; Graberella Gladish, Mollie Buley, Ethel Jones, Mary E. Wilson, Lucy Stevenson, Pauline Carnell, Pearl Minor, Georgia Thomas, Mattie Burton, Lucy Hughes, Anna Rice, Hattie Hornbeake, E. B. Jackson, Rosa Brooks, Secretary.

Wilson Coll.
 1914
 and
 1914
 651
 454
 2259
 HS
 *

Juvenile No.	Location.	Princesses	Secretary.	Membership	Disbursement	Receipts	Value of Property
2. Rising Star	Mt. Sterling	Fannie Rogers	6	\$1.50	\$15.75
6. Earnest Workers..	Henderson	Marion Hall	George Jeffers	24	30.97	7.00
7. Rising Star	Paducah	Elizabeth Reed	Tomas T. Dunlap ...	18	14.30	6.00
8. Elizabeth	Owensboro	Hattie Foster	Elonora Long	12
10. Younger Star	Louisville	R. Z. Duley	Annie Silkman	9
21. Golden Jewel	Princeton	Roseline McGoodman	D. McGoodman
22. Golden Crown ...	Louisville	Euralla Grannary ..	Ritta Johnson.....	22	10.00	6.00
30. Juvenile Lodge ..	Lebanon	Nettie Mudd	Tillie Rooch	18	5.00	\$200.00
33. Guiding Star	Maysville	Sallie Marshall	May Hays	18	14.00	2.00
34. Busy Bee	Winchester	Mayme Rees	Mary Boone
36. Golden Link	Shelbyville	Emma Brown	Mary Ann Duke
39. Bloom of Youth ..	Millersburg	Ervine Taylor	A. L. Reeves	32	89.50	47.75
37. Gains Youth	Cadiz	Gladys Taylor	Martha Young	17	14.00
40. Little Sparrow ..	Lexington	Nellie Sludell	Henretta Sawyer ...	24	79.30	16.40
43. Lillian	Paris	Annie Arnold	Lucille Nelson	23	41.23
44. Silver Star	Mayfield	Preston Winster	Arletha Neal	18	20.34	15.38
51. Golden Eagle	Madisonville	Myrtes Dickson	Sallie Dickerson	6	7.40
53. Golden Rule	Earlington	Lydia Edmonson ...	Maxie Foster	21	49.61
67. Pleasant Grove ..	Madisonville	Ida J. Sherley	Mabel Kenedy
75. Juvenile	Georgetown	Mayple Johnson ...	Kates Davis	18
76. Golden Circle	Lancaster	Odessa Jones	L. B. Mason	27	97.00
84. Blessed Union ...	Ashland	Hazel Moore	Stella Thomas	20	79.00
53. Golden Rule	Earlington	Lydia Edmonson ...	Maxie Foster	21	49.61
89. May Flower	Covington	Elnora Warren	Leconia Cosby	84	50.75	15.00

Total Temples, 86; total members, 3446; total Royal Houses—Number of Royal House 3; members of Royal House 185.
 Total Juveniles—Number of Juveniles, 24; number members, 438.

ROBERTS PRINTING CO.
FRANKFORT, KY.