

UNIVERSITY OF KENTUCKY

Invitational Tournament

December 22&23, 1966

MEMORIAL COLISEUM



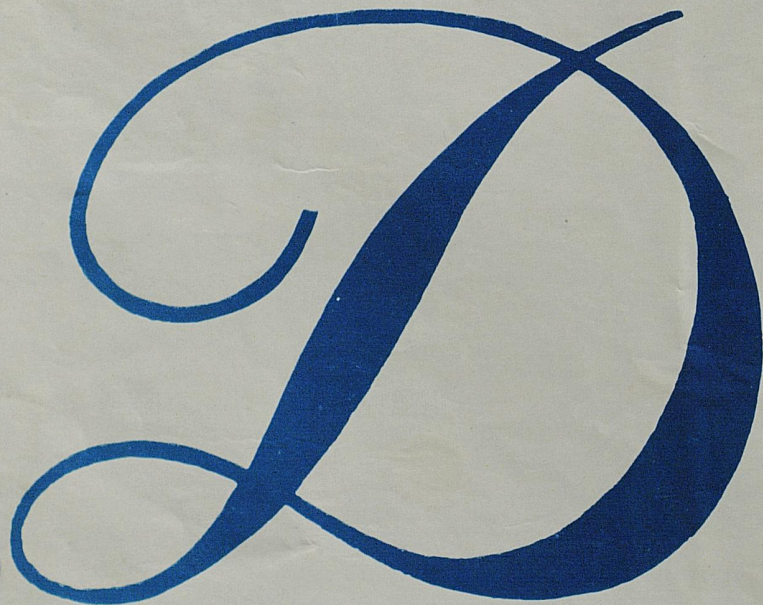
PRICE **25¢**

EST. PRICE .24 - TAX .01

DAWAHARE'S located in

- LEXINGTON
- WHITESBURG
- PIKEVILLE
- HAZARD
- NEON
- CORBIN

Gardenside Plaza

A large, blue, stylized letter 'D' logo with a decorative flourish on the left side, enclosed within a blue rectangular border.

DAWAHARE'S

PLENTY FREE PARKING

STORE HOURS — 10 a.m. 'til 9 p.m.
Monday thru Saturday



... PURCELL'S, Central Kentucky's
Headquarters For Fine Quality Shoes

presenting the ... **WINTHROP**



Golden Eagle



\$26⁹⁵
pair

TRADITIONAL
CLASSIC

WINTHROP'S Long Wing
Brogues . . .

Handsome in Styling,
Sturdy in Design

- Leather Heel
- Double Leather Sole
- Long Wing Brogue
- Full Leather Lining
- Black or Brown Grain Leather



\$16⁹⁵
pair

- Black or Cordo Long Wing
- Black Pinseal Sole
- Rubber Heel

Shoe Center,
Main Floor

Purcell's

320-330 W. MAIN, LEXINGTON, KY.

Here's Your Kentucky Wildcat Basketball Bank!

It's hand painted in full color with Kentucky blue and white jersey. An unusual bank that fans young and old will enjoy. Get your's now at any one of our seven convenient locations. \$1.25

Put your change
in the cat . . .
put your
savings in
First Security . . .
Lexington's
Full-Service Bank



First Security

NATIONAL BANK AND TRUST COMPANY

Member FDIC

Member Federal Reserve System

The Wildcat Tipoff

Official Kentucky Basketball Program

Published by U.K. Athletics Association

B. A. SHIVELY, Athletic Director

KEN KUHN, Sports Information Director

Fourteenth Annual

U.K. INVITATIONAL TOURNAMENT

Memorial Coliseum — December 22-23, 1966

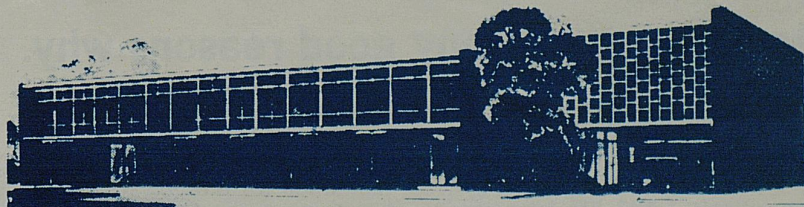
First Night: Penn St. vs. Kansas St.—7:30 p.m.

Second Night: 3rd Place Game—7:30 p.m.

Oregon St. vs. Kentucky—Appx. 9:30 p.m.

Championship Game—Appx. 9:30 p.m.

The Downtowner Motor Hotel



LEXINGTON'S FINEST — 155 ROOMS — RESTAURANT — COCKTAIL LOUNGE — CONFERENCE ROOMS
PARK AT YOUR FRONT DOOR — TV — HI-FI — RADIO — PHONES — SWIMMING POOL
347 EAST MAIN — JUST EAST OF ROSE

SOUTHLAND SPORT SHOP

Distributors of

Riddell, Spanjian, Hyde, Rawlings, Wilson, and Spalding Sporting Goods

Adidas Track Shoes

Cramer Products

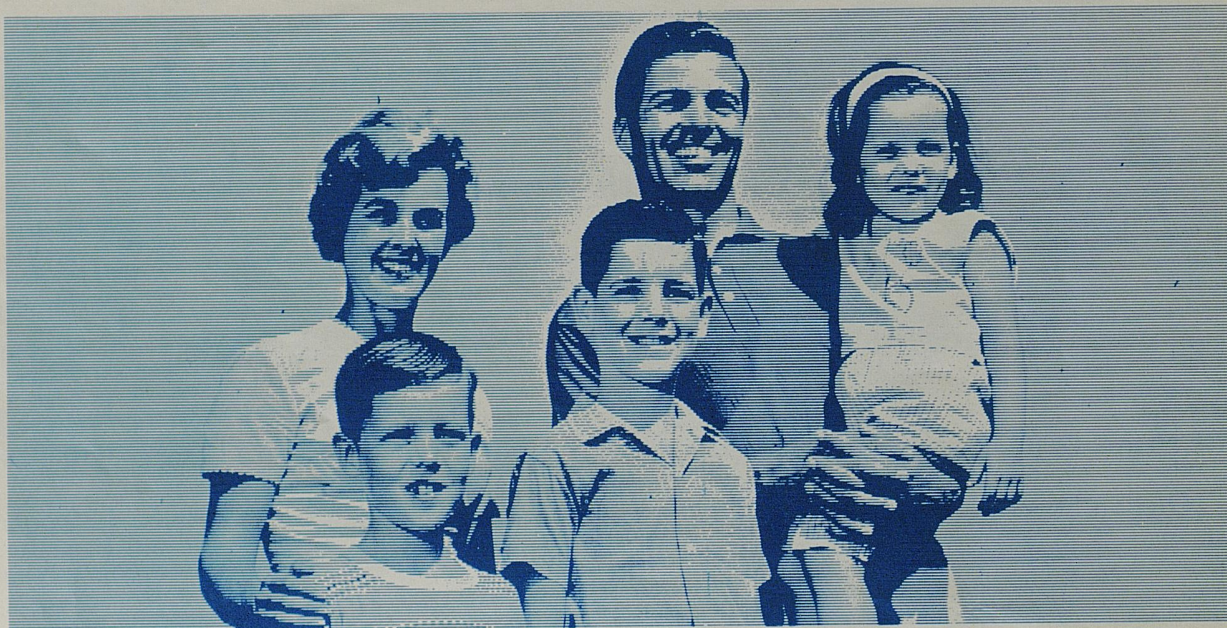
Plenty of Free Parking Space

Gene Stokley — In The Southland Shopping Center — Dick Wallace

P.O. BOX 8251

PHONE 277-3977

American families now own more than one billion dollars of Kentucky Central life insurance.



And there are many good reasons why.

With more than one billion dollars of life insurance in force, Kentucky Central now ranks in the upper seven percent of the nation's 1,700 life insurance companies.

It doesn't "just happen" that a company grows to our size. And enjoys such widespread public acceptance. It takes a lot of plus factors.

Let's begin with age and service.

No "johnny come lately" in the life insurance business, Kentucky Central was founded in 1902 and is the oldest life insurance company with home offices in the Bluegrass State. In fact, less than six percent of all U. S. life insurers have been in operation longer.

During these 65 years, we've earned an enviable reputation for prompt, friendly and intelligent service. Just ask any Kentucky Central policyowner — from Oregon to Florida.

Then there's our wide selection of insurance plans. Most of them with more liberal features than can be obtained from other companies.

Or consider our financial strength. With approximately \$130 of assets for each \$100 of liabilities, we have one of the highest ratios of any major life insurance company.

Just a few of the many good reasons why more and more people are buying more life insurance from Kentucky Central. Everyday.



Kentucky Central Life Insurance Co.

LEXINGTON, KY. • AMERICA'S KEY TO FAMILY SECURITY SINCE 1902

Welcome to the Fourteenth UK Invitational Tournament

It is my pleasure to welcome to the campus of the University of Kentucky the coaches, the players, the officials, and the friends and supporters of the teams participating in this 14th Annual U.K. Invitational Tournament. We are delighted that such fine sister institutions as Kansas State, Oregon State, and Penn State are represented in this Tournament which is a highlight in the University of Kentucky's athletic program.

May I wish for each of you a pleasant visit to our campus, an exciting tournament, a happy holiday season, and a prosperous New Year.



DR. JOHN W. OSWALD
President, University of Kentucky



BERNIE A. SHIVELY
Tournament Manager

A former All-America gridder and three-sport star during collegiate days at University of Illinois and Kentucky's Director of Athletics since 1938, Bernie A. Shively directs the U.K. Invitational in the capacity of tournament manager. The U.K. sports chief, who conceived the idea of sponsoring a major on-campus cage classic in 1953, last year completed his second term as chairman of the NCAA University Division Basketball Tournament and for many years headed the committee controlling the now-defunct Southeastern Conference post-season cage tourney. During his tenure at Kentucky, "Shive" has held posts of football line coach, head of the Physical Education Department, track coach, baseball coach and head football coach in addition to supervising the development of one of the nation's most outstanding athletic programs in the capacity of Director of Athletics. Shively has gained national recognition for his administrative excellence and fair-minded approach to difficult problems.

All 1966-67 Basketball Games of

U. OF K.

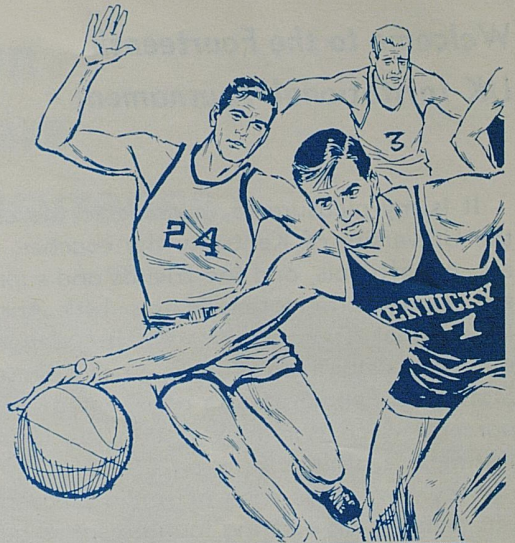
with *Claude Sullivan*

brought to



you on the

**STANDARD OIL
NETWORK**



**STANDARD
OIL**

WVLK

Lexington

WFKY

Frankfort

WCMI

Ashland

WINN

Louisville

WKIC

Hazard

WIEL

Elizabethtown

WOMI

Owensboro

WPKE

Pikeville

WMLF

Pineville

WDXR

Paducah

WCTT

Corbin

WHOP

Hopkinsville

WSIP

Paintsville

WFTM

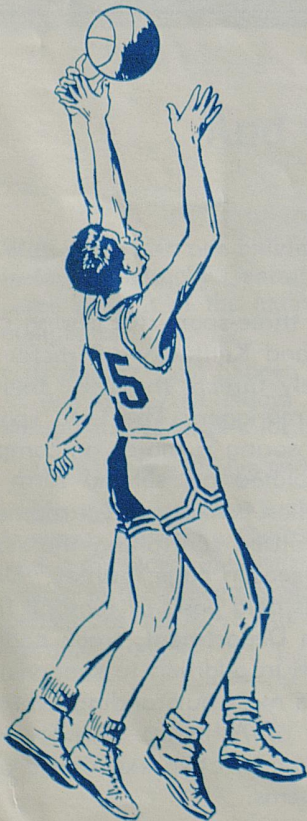
Maysville

WHIR

Danville

WSFC

Somerset



WVLK

The Originating
STATION for

**ALL U. K.
BASKETBALL**
on the
**STANDARD OIL
BASKETBALL
NETWORK**

WVLK - CBS

DIAL 590
FOR 24 HOUR A DAY RADIO

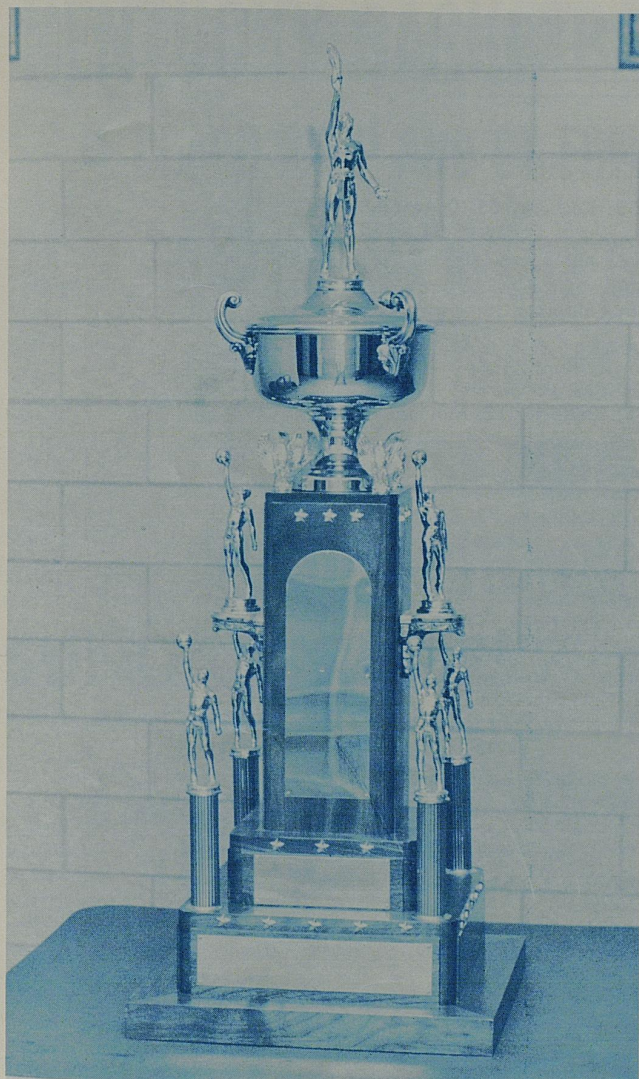
*Play by Play at
Home and Away*

with

CLAUDE SULLIVAN



14th UK INVITATIONAL TOURNAMENT



Two of the nation's perennial basketball powers and another team making a fast rise in collegiate cage circles join the host Kentucky Wildcats to form the truly intersectional field bidding for the coveted title in the 14th renewal of the University of Kentucky Invitational Tournament.

Kentucky Athletic Director Bernie A. Shively, who serves as the tournament manager, has announced the 1966 participants as Kansas State from the Midlands, Penn State from the East, Oregon State from the Far West and the host Wildcats of the Southeast section of the country. Both the K State Wildcats and the Beavers of Oregon State will be making a second try for the UKIT title while Penn State enters the high-calibre tourney for the first time.

Pairings for the nation's richest and most prestige-packed regular season cage classic, which features doubleheaders both nights leading to the championship and third place honors, will pit Kansas State against Penn State in the opener Thursday night followed by a contest involving Oregon State and Coach Adolph Rupp's defending UKIT champions. Losers play the first game on Friday night to settle third place while the two winners battle for the title and an imposing trophy (pictured) in the nightcap attraction. None of the contestants have previous competition against their first opponent.

Besides gaining victory for victory's sake alone and trying for the huge trophy that goes with the championship, the four clubs stand to pick up national-record size shares of the

net proceeds and highly important national prestige that has become associated with success in the tournament. Often the winner of the UKIT has made significant gain in the national poll rankings as the direct result of attention-grabbing early wins in the tourney over major intersectional powers. Twice in recent years, the UKIT champ has vaulted all the way to the top position in wire service polls and generally the champion has used its success in the Kentucky tournament as the springboard to a winning season.

Public acceptance of the UKIT reflects the high calibre of the fields that have participated in the pre-Christmas classic. Twenty-five cage powers from every section of the nation have joined the host Wildcats in the previous thirteen tournaments. Prime aim of Athletic Director Shively and UK Coach Adolph Rupp in inaugurating the UK Invitational was to return big-time basketball, beset by scandal hatched in big city arenas, to the campus and to provide the public with a view of top-flight basketball as it is played in different sections of the country. Furthering the high ideals of an on-campus tournament and rejecting overemphasis of commercialism, net proceeds of the UKIT are divided equally among participants.

Invitational Tournament History



- 1953 CHAMPIONSHIP GAME: Kentucky 73, LaSalle 60.
Consolation: UCLA 72, Duke 67.
First Round: LaSalle 62, UCLA 53; Kentucky 85, Duke 69.
Attendance: 16,714. Payoff: \$8,243.77 to each team.
- 1954 CHAMPIONSHIP GAME: Kentucky 63, LaSalle 54.
Consolation: Southern California 54, Utah 52.
First Round: LaSalle 49, Southern California 38; Kentucky 70, Utah 65.
Attendance: 17,973. Payoff: \$9,902 to each team.
- 1955 CHAMPIONSHIP GAME: Dayton 89, Kentucky 74.
Consolation: Minnesota 90, Utah 77.
First Round: Dayton 77, Utah 73; Kentucky 72, Minnesota 65.
Attendance: 19,185. Payoff: \$10,647.17 to each team.
- 1956 CHAMPIONSHIP GAME: Kentucky 91, Illinois 70.
Consolation: Southern Methodist 67, Dayton 59.
First Round: Illinois 82, Dayton 65; Kentucky 73, Southern Methodist 67.
Attendance: 15,753. Payoff: \$8,511.87 to each team.
- 1957 CHAMPIONSHIP GAME: West Virginia 75, North Carolina 64.
Consolation: Kentucky 78, Minnesota 58.
First Round: North Carolina 73, Minnesota 67; West Virginia 77, Kentucky 70.
Attendance: 20,956. Payoff: \$11,751.38 to each team.
- 1958 CHAMPIONSHIP GAME: Kentucky 97, West Virginia 91.
Consolation: Oklahoma State 63, Ohio State 59.
First Round: West Virginia 67, Oklahoma St. 49; Kentucky 95, Ohio St. 76.
Attendance: 20,386. Payoff: \$13,817.35 to each team.
- 1959 CHAMPIONSHIP GAME: West Virginia 79, Kentucky 70.
Consolation: St. Louis 68, North Carolina 52.
First Round: West Virginia 87, St. Louis 86; Kentucky 76, North Carolina 70.
Attendance: 22,713. *Payoff: \$15,420.33 to each team.
- 1960 CHAMPIONSHIP GAME: St. Louis 74, Kentucky 72 (1 overtime).
Third Place: California 72, Illinois 54.
First Round: St. Louis 54, California 53 (1 overtime); Kentucky 83, Illinois 78.
Attendance: 15,095. Payoff: \$9,155.29 to each team.
- 1961 CHAMPIONSHIP GAME: Kentucky 80, Kansas State 67.
Third Place: Tennessee 75, Xavier 70.
First Round: Kansas State 75, Xavier 67; Kentucky 96, Tennessee 69.
Attendance: 16,013. Payoff: \$9,903.57 to each team.
- 1962 CHAMPIONSHIP GAME: Kentucky 79, West Virginia 75.
Third Place: Oregon State 61, Iowa 55.
First Round: West Virginia 70, Oregon State 65; Kentucky 94, Iowa 69.
Attendance: 22,138. Payoff: \$14,067.17 to each team.
- 1963 CHAMPIONSHIP GAME: Kentucky 98, Wake Forest 75.
Third Place: Princeton 90, Wisconsin 87.
First Round: Wake Forest 96, Princeton 67; Kentucky 108, Wisconsin 85.
Attendance: 22,111. Payoff: \$13,563.41 to each team.
- 1964 CHAMPIONSHIP GAME: Illinois 91, Kentucky 86.
Third Place: Dayton 71, West Virginia 67.
First Round: Illinois 104, Dayton 86; Kentucky 102, West Virginia 78.
Attendance: 22,804. Payoff: \$14,368.30 to each team.
- 1965 CHAMPIONSHIP GAME: Kentucky 91, Indiana 56.
Third Place: California 75, Air Force 70.
First Round: Indiana 71, California 64; Kentucky 78, Air Force 58.
Attendance: 21,069. Payoff: \$13,251.39 to each team.

* National record.

WLEX-TV PRESENTS KENTUCKY BASKETBALL

● COACH RUPP AND CY FOLLMER

● THE SPA HEALTH CLUB

● GOODWIN BROS. INC.

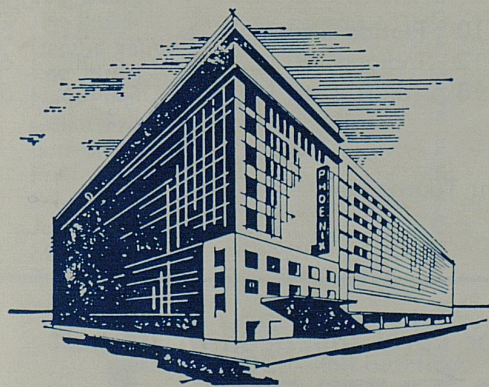
● BROUGHTON DAIRY

● KELLER IMPLEMENT CO.

SUNDAY NIGHTS 7:00



Headquarters For Visiting Teams And Fans



Kentucky's Convention
Headquarters

120 E. Main St.
Downtown Lexington, Ky.
Phone 255-3210

FEATURING

Le Deauville

RESTAURANT

and LOUNGE

- FREE PARKING
- BEVERAGE & FREE ICE MACHINE
ON EACH GUEST FLOOR
- 100% AIR CONDITIONED
- TV IN ALL ROOMS
- ALL ROOMS REMODELED
AND REDECORATED
- COFFEE SHOP AND DINING ROOM
WITH ECONOMICAL PRICES

PHOENIX HOTEL

Kansas State *Wildcats*



The Coach . . .

In his 14th season as Kansas State head basketball coach, Tex Winter has built a proud national image for his school and he is not satisfied to rest on laurels already won. He has won wide acclaim for his ability to mold winning teams from widely varying styles of material and annually is in demand as a lecturer at clinics all over the world. During his 13 years with K-State, Coach Winter has suffered only one losing campaign and claimed seven Big Eight Conference championships, two midwest NCAA successes and a No. 1 national ranking in 1959. One of his collegiate playing seasons was spent at Oregon State—a possible opponent on the second night of this year's UKIT.

Wildcats In '66

The Kansas State Wildcats, making a second appearance in the UK Invitational Tournament, figure to be tough to handle this time around. Boasting one of the tallest starting combos in the country, the Big Eight powerhouse has rebounded from an opening game setback by Minnesota to post impressive successes that stamp it as a potential troublemaker. The Wildcats utilize pattern play based on a Triple Post and go with either a straight man-for-man or zone defense. Experience, basketball know-how and depth are definite assets along with exceptional height—seven-foot-one, 270-pound Nick Pino; 6-10 Roy Smith; 6-7 scoring ace Earl Seyfert; 6-11 Mike Barber; and 6-8 John Olson. On their previous UKIT visit in 1961, K-State was stopped in the title game by Kentucky.

KANSAS STATE SEASON RECORD (Won 5, Lost 1)

	KS	Opp.		KS	Opp.
Dec 1	Minnesota (H)	59 60	Dec. 10	Florida State (N)	81 58
Dec. 3	Oregon (H)	52 45	Dec. 12	Indiana (H)	82 69
Dec. 9	Baylor (H)	77 70	Dec. 18	Texas Tech (A)	66 58

— NEXT GAME —

Dec. 27-30 Big Eight Tournament

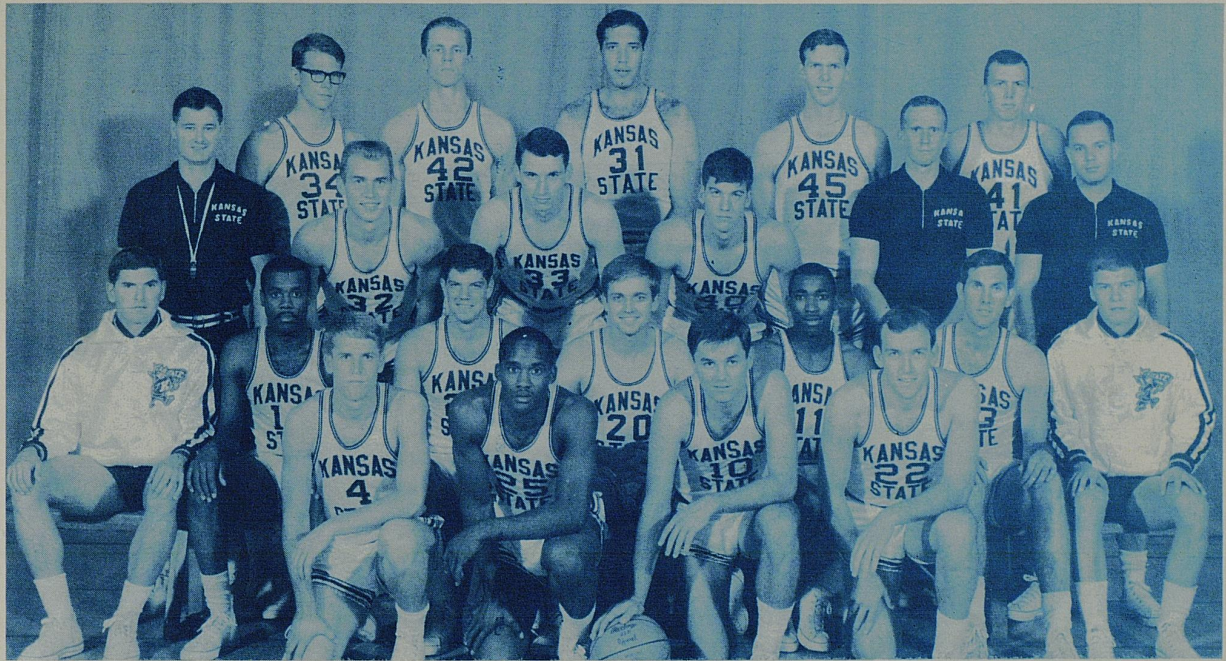
Contemporary or Early American at its best

ROBERTS

Furniture Company

ESTABLISHED 1893

FREE PARKING AT SIDE DOOR, 425 W. MAIN ST. . . . OPEN MONDAY NIGHTS 'TIL 9 P.M.



BACK ROW (left to right)—Fred Arnold, Mike Barber, Nick Pino, Roy Smith, John Olson. THIRD ROW—Head Coach Tex Winter, Galen Frick, Earl Seyfert, John Shupe, Graduate Asst. Conny Ballard, Varsity Asst. and Frosh Coach Bill Guthridge. SECOND ROW—Student Manager Jim Smith, Dan Gaskin, George Shupe, Larry Weigel, Steve Honeycutt, Jim Ikard, Student Manager Dwight Oman. FRONT ROW—George Schultz, Ray Willis, Dennis Berkholtz, Bob George.

KANSAS STATE UNIVERSITY ROSTER

No.	Name	Pos.	Age	Ht.	Wt.	Ltrs.	Hometown
10	Dennis Berkholtz	G	21	6-1	170	2	Whitefish Bay, Wis.
11	Steve Honeycutt	G-F	20	6-1	172	0	Humboldt, Kan.
14	Dan Gaskin	F	21	6-2	171	0	Derby, Kan.
20	Larry Weigel	G-F	22	6-3	195	2	Hays, Kan.
22	Bob George	G	22	5-11	180	1	Colby, Kan.
23	Jim Ikard	G	19	6-4	192	0	Oklahoma City, Okla.
24	George Shupe	F	19	6-4	190	0	Manhattan, Kan.
25	Ray Willis	G	20	6-1	190	0	Pauls Valley, Okla.
31	Nick Pino	C	22	7-1	270	1	Sante Fe, N. M.
32	Galen Frick	F	21	6-4	197	1	Durham, Kan.
33	Earl Seyfert	F	19	6-7	214	1	Humboldt, Kan.
34	Fred Arnold	F	20	6-7	210	0	Marin, Calif.
40	John Shupe	F	20	6-5	196	0	Manhattan, Kan.
41	John Olson	C	22	6-8	197	1	Leonardville, Kan.
42	Mike Barber	C	19	6-11	204	0	Roswell, N. M.
45	Roy Smith	C	22	6-10	235	2	Grandview, Mo.

HEAD COACH—Tex Winter (13 Years at KS—Won 226, Lost 100)

ASST. CUOCH—Bill Guthridge

GRADUATE ASST.—Sonny Ballard

MANAGERS—Dwight Oman and Jim Smith

ATHLETIC DIRECTOR—Bebe Lee

Nickname—Wildcats

Location—Manhattan, Kansas

1965-66 Record—Won 14, Lost 11

Publicist—Dev Nelson

Enrollment—11,000

Colors—Purple and White

Conference—Big Eight

UKIT Record—Won 1, Lost 1 in 1961

DeBoor

Laundry Dry Cleaning
Storage

Dixie Bell Dairy Company

**"The Largest and Only Locally
Owned Dairy Serving
Central Kentucky"**



**315 North Limestone Street
LEXINGTON, KY.**

You're Always Welcome At . . .

Begley's

WALGREEN AGENCY DRUG STORES

IN LEXINGTON

- ★ 69 Eastland Shopping Center
- ★ 1255 Northland Shopping Center
- ★ 878 East High Street
- ★ 404 Southland Drive
- ★ 1743 Gardenside Shopping Center

**SERVING THE BEST IN DRUG STORE NEEDS
SINCE 1921**

16 DRUG STORES IN KENTUCKY

5 PHARMACIES

5 GREGORY COLONIAL RESTAURANTS

Visiting School Presidents . . .



JAMES A. McCAIN
Kansas State University



DR. JAMES H. JENSEN
Oregon State University



DR. ERIC A. WALKER
Pennsylvania State University

Athletic Directors . . .



BEBE LEE
Kansas State University



JIM BARRATT
Oregon State University



ERNEST B. McCOY
Pennsylvania State University

Kentucky Wildcats



The Coach . . .

National Coach of the Year for 1966 and the nation's winningest basketball coach for nearly four decades and one of the most colorful figures in the game today . . . That's Baron Adolph Rupp, who this season aims at producing a winner at University of Kentucky for the 37th year. Able to boast of a nation-leading career percentage of 83 percent success in his chosen profession, Coach Rupp has guided the Wildcats since 1930—and never had a losing season. Few major goals of the coaching profession have escaped the grasp of this 65-year-old veteran, feared and respected by opponents and beloved by millions of fans to whom he is known familiarly as "The Man In The Brown Suit."

Wildcats In '66

Pre-season calculations figured the perennially-tough Kentucky Wildcats as something just short of a shoo-in for repeat national honors and a virtual cinch to pick up enroute a ninth UKIT title. Such optimism seemed well founded, but season developments find Baron Adolph Rupp's crew victim three times in its first five starts. Off to the poorest start in 40 years, the nationally-ranked Wildcats may well find themselves in the unfamiliar role of underdog in this year's tournament. Never before have the Cats gone into the 13 previous UK Invitationals with as many as three blemishes on the record. In an attempt to offset the height advantage of UKIT foes, the Ruppmen will rely on speed, ball handling, improved defense and the shooting of All-Americans Pat Riley and Louie Dampier.

KENTUCKY SEASON RECORD (Won 2, Lost 3)

	UK	Opp.		UK	Opp.		
Dec. 3	Virginia (H)	104	84	Dec. 13	North Carolina (H)	55	64
Dec. 5	Illinois (H)	97	*98	Dec. 17	Florida (H)	75	78
Dec. 10	Northwestern (A)	118	116				

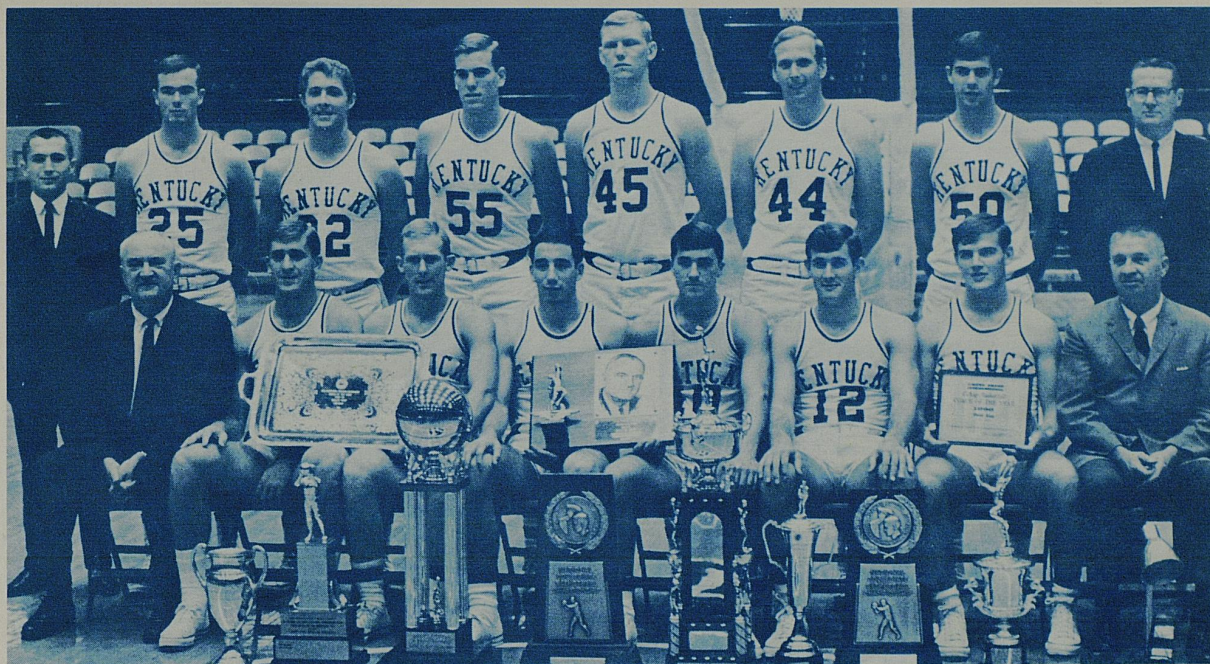
— NEXT GAME —

Dec. 28 Cornell Home

NEW AND USED BOOK CENTER ON CAMPUS

University Book Store

LOCATED IN THE STUDENT CENTER



WILDCATS AND HARDWARE—Kentucky's cage Wildcats of 1966-67 pose proudly with the large number of trophies collected a year ago by their predecessors of last season and by unanimous national Coach of the Year Adolph Rupp (front row left). Flanking the coach in front are All-America Pat Riley, Bobby Tallent, Phil Argento, All-America Louie Dampier, Jim LeMaster, Steve Clevenger and Asst. Coach Harry Lancaster. In back, from the left, are manager Bobby Barton, Tommy Porter, Gene Stewart, Thad Jaracz, Cliff Berger, Brad Bounds, Gary Gamble and Asst. Coach Joe Hall.

UNIVERSITY OF KENTUCKY VARSITY ROSTER

No.	Name	Pos.	Class	Exp.	Age	Ht.	Wt.	Hometown
10	Louie Dampier	G	Sr.	2VL	21	6-0	165	Indianapolis, Ind.
12	Jim LeMaster	G	Jr.	1VL	19	6-2	190	Lexington, Ky.
13	Phil Argento	G	Soph.	FN	19	6-0	180	Cleveland, Ohio
22	Gene Stewart	F	Sr.	0VL	21	6-2	190	Brookville, Ind.
24	Bob Tallent	G	Jr.	1VL	20	6-1	173	Langley, Ky.
25	Tommy Porter	F	Jr.	1VL	20	6-3	184	Gracey, Ky.
32	Steve Clevenger	G	Jr.	1VL	20	6-0	185	Anderson, Ind.
42	Pat Riley	F	Sr.	2VL	21	6-3	202	Schenectady, N. Y.
44	Brad Bounds	C	Sr.	1VL	21	6-5	205	Bluffton, Ind.
45	Cliff Berger	C-F	Jr.	1VL	19	6-8	215	Centralia, Ill.
50	Gary Gamble	F	Jr.	1VL	19	6-4	175	Earlington, Ky.
55	Thad Jaracz	F-C	Jr.	1VL	19	6-5	215	Lexington, Ky.

HEAD COACH—ADOLPH RUPP (36 Years—Won 752, Lost 152)

ASSISTANT COACHES—Harry Lancaster and Joe Hall

TRAINER—Richard (Spike) Kerns

STUDENT MANAGERS—Bobby Barton and Alan Theobald

ATHLETIC DIRECTOR—Bernie Shively

Nickname—Wildcats

Location—Lexington, Kentucky

1965-66 Record—Won 34, Lost 2

Publicist—Ken Kuhn

Enrollment—18,000

Colors—Blue and White

Conference—Southeastern

UKIT Record—Won 21, Lost 5 in 13 Appearances

(Champions 1953, 1954, 1956, 1958, 1961, 1962, 1963, 1965)

Perkins

Pancake HOUSE

- 28 Different Varieties of Pancakes & Waffles
- Businessman's Luncheon Mon. thru Friday
- Steaks, Chops, Chicken, Seafood Also Available
- Dine In An Early American Atmosphere
- Special Family Nights & Childrens Portions
- Informal, Friendly Service
- Private Dining Room For Parties Clubs, Banquets, Etc.

BILL ELLIS — Manager

DIAL — 254-7835

Located On U.S. 27 At S. Lime and Rose Sts.
Across From U. of Ky. Medical Center

*"Stop in Whenever Your Appetite
Craves a Treat"*

"Your Store for Traditional Wear"

Our Customers Set the Fashion Pace

Visit Us Soon and Often

Located Next to Kennedy's Book Store

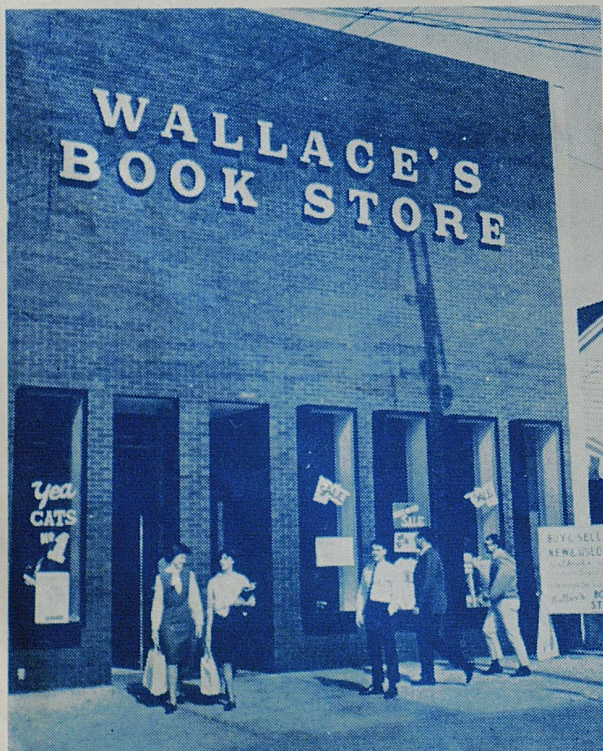


The University Shop

OHIO U.
PURDUE U.
OHIO STATE U.
BOWLING GREEN S.U.



EASTERN KY. U.
FLORIDA U.
MIAMI U. (O.)
U. of KENTUCKY



WALLACE'S BOOK STORE GROWING WITH LEXINGTON

Better Buys, Friendlier Service

GREEK CRESTED STATIONERY
NEW AND USED UK TEXTBOOKS
BEST-SELLING HARDBOOKS
45 AND LP RECORDS
XEROX SERVICE

COLLEGE CRESTED NOVELTIES
GREETING CARDS • COSMETICS

More Money for Your Books
More Books for Your Money

WALLACE'S BOOK STORE

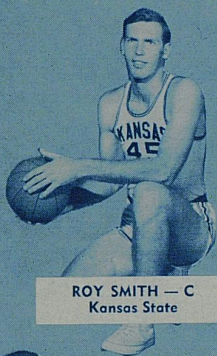
Go Cats

South Lime
At Euclid

Phone
255-7973



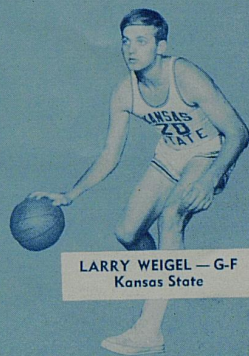
BOB FRANZ — G
Oregon State



ROY SMITH — C
Kansas State



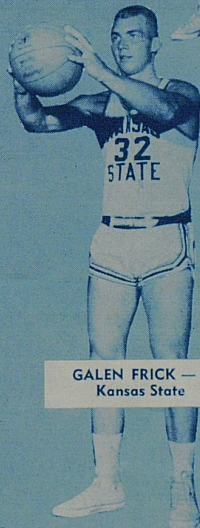
EARL SEYFERT — F
Kansas State



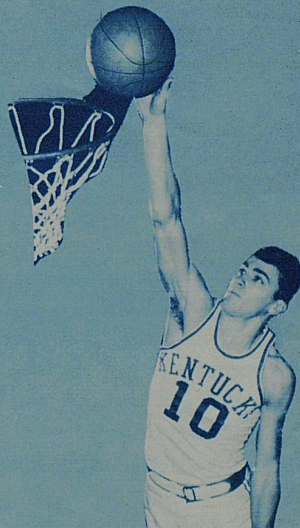
LARRY WEIGEL — G-F
Kansas State



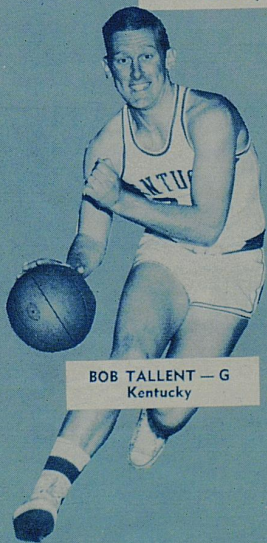
PAT RILEY — F
Kentucky



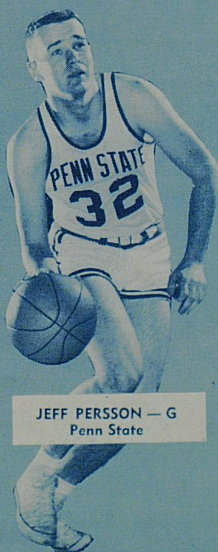
GALEN FRICK — F
Kansas State



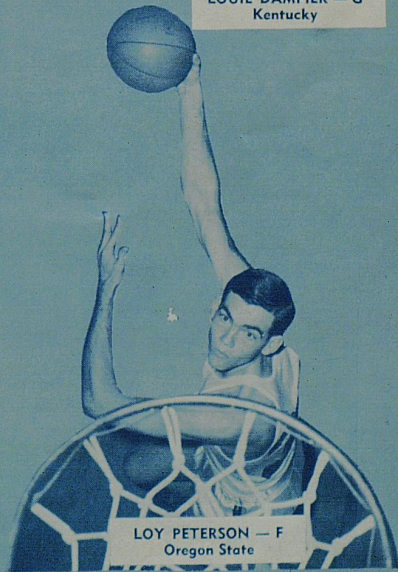
LOUIE DAMPIER — G
Kentucky



BOB TALLENT — G
Kentucky



JEFF PERSSON — G
Penn State



LOY PETERSON — F
Oregon State

Penn State *Nittany Lions*



The Coach . . .

Highly-respected John Egli, opening his 13th campaign at the helm of the Nittany Lions and already the school's most successful coach in history, comes into the UKIT for the first time with an enviable record. Outstretching his overall accounting of 167 wins and 111 losses is his achievement of the past four seasons, during which Penn State has come through on the credit side 75 percent of the time. Egli took over at Penn State in 1954-55 and guided his team to the NCAA at Lexington as an At-Large entrant. He also made it to national tournaments the past two years—the NCAA in '65 and the NIT last season. The Penn State coach is fourth vice-president of the National Basketball Coaches Association, a member of its Ethics Committee and chairman of the Coaches All-America selection committee.

Nittany Lions In '66

The only complete newcomer to the UKIT, Penn State apparently will have a difficult time in its first quest for the tournament championship. That's the impression given by the cold facts and figures, but the Nittany Lions could easily "catch-fire" in the Kentucky Invitational if they find elusive scoring punch. Difficulties with inexperience and lack of depth plagued Penn State early but are working themselves out rapidly and the Keystone State crew could make a big noise in the tournament if taken lightly. The Lions admit to good size and better than average speed. Top returning threats are scoring leader Jeff Perrson (6-3 guard) and 6-9 center Paul Mickey. Penn State operates with a run-and-shoot offense and a nagging, sliding zone defense.

PENN STATE SEASON RECORD

(Won 3, Lost 3)

	PS	Opp.		PS	Opp.
Dec. 1 Maryland (A)	53	76	Dec. 12 Bucknell (H)	65	57
Dec. 3 North Carolina (N)	63	93	Dec. 16 Syracuse (A)	72	77
Dec. 10 Carnegie Tech (H)	64	57	Dec. 18 Colgate (A)	98	84

— NEXT GAME —

Dec. 28-29 Gator Bowl Tournament



Springs Motel

2020 South Broadway PHONE 277-5751 Lexington, Kentucky

ENJOY COCKTAILS AND DANCING IN THE
"NEPTUNE LOUNGE" AND THE LOUNGE
OF THE FOUR SEASONS

DINE IN THE "POMPEI ROOM"
PRIVATE DINING FACILITIES FOR GROUPS OF 25-300



KNEELING (left to right)—Bob Hopkins, George Leidy, Joe McGovern, Ed Manning, Stu Douglas, Gary Hayes. STANDING—Trainer Ray Ulinski, Manager Howard Barakat, Bill Stansfield, Bill Young, Jeff Persson, Ralph Guyton, Paul Mickey, Lim Linden, Head Coach John Egli, Assistant Coach Joe Tocci.

PENN STATE UNIVERSITY ROSTER

White	Blue	Name	Pos.	Class	Age	Ht.	Wt.	Ltrs.	Hometown
10	11	Gary Hayes	G	Sr.	21	5-11	165	0	Flushing, N. Y.
14	15	George Leidy	G	Jr.	20	6-3	175	0	Ridley Township, Pa.
20	21	Stu Douglas	G	Jr.	20	6-3	170	0	Montrose, Pa.
24	25	Joe McGovern	G	Sr.	20	6-2	200	1	West Orange, N. J.
30	31	Jim Linden	G	Soph.	20	6-2	160	0	York, Pa.
32	33	Bob Hopkins	G	Soph.	19	6-2	185	0	Bethesda, Md.
34	35	Ralph Guyton	F	Sr.	21	6-5	190	0	Canonsburg, Pa.
40	41	Jeff Persson	G	Jr.	20	6-3	195	1	Sharon, Pa.
44	45	Galen Godbey	F	Soph.	19	6-5	220	0	State College, Pa.
50	51	Bill Young	F	Soph.	19	6-6	220	0	Angelica, N. Y.
52	53	Bill Stansfield	F-C	Soph.	19	6-8	240	0	West Palm Beach, Fla.
54	55	Paul Mickey	C-F	Sr.	22	6-9	220	2	Lemont Furnace, Pa.
		Lee Ammerman	G	Soph.	19	6-2	175	0	Curwensville, Pa.
		Steve Peters	G	Soph.	20	5-11	160	0	Montrose, Pa.

HEAD COACH—John Egli (12 Years at PSU—Won 167, Lost 111)

ASSISTANT COACH—Joe Tocci

TRAINER—Ray Ulinski

CO-CAPTS.—Joe McGovern and Paul Mickey

MANAGER—Howard Barakat

ATHLETIC DIRECTOR—Ernest B. McCoy

Nickname—Nittany Lions
 Location—University Park, Pa.
 1965-66 Record—Won 18, Lost 6

Publicist—Jim Tarman
 Enrollment—21,000
 Colors—Blue and White
 Conference—None

UKIT Record—First Appearance

Oregon State *Beavers*



The Coach . . .

Paul Valenti is in only his third season as a head coach and that relegates him to a temporary "back seat" when just length of service of rival UKIT coaches is taken into consideration. The average of the other three is better than 20 years on the job. But the head man of the OSU Beavers is rapidly coming to the forefront on the strength of his accomplishments. He added a winning touch immediately when he took over in 1964-65 and last year was recognized as "West Coast Coach of the Year" when OSU unexpectedly beat out UCLA for top honors in the Pacific-8 Conference. Valenti played his college cage career at Oregon State and then served 18 years as an aide to the late Slats Gill at the school.

Beavers In '66

Four years back, when Oregon State first visited the UK Invitational, the Beavers copped third place honors at the expense of Iowa. This time around, the Oregonians may have the "horses" to go all the way if they get by host Kentucky in the opener. Although they are sure to miss three regulars lost from the surprising Pacific-8 championship outfit of last season, OSU retains much scoring talent (headed by 6-5 forward Loy Peterson) and is sure to be tough defensively once again as well. The Beavers lack the really big man, such as seven-foot Mel Counts, but are blessed with an abundance of fair-sized operatives. Strength to back up Peterson comes from six other lettermen and a prize sophomore—6-4 forward Vince Fritz. The experts expect OSU to operate from a troublesome ball-control offensive style.

OREGON STATE SEASON RECORD (Won 4, Lost 0)

	OS	Opp.		OS	Opp.
Dec. 2 Hawaii (A)	61	56	Dec. 9 Portland (H)	64	44
Dec. 3 Hawaii (A)	58	54	Dec. 17 Brigham Young (H)	92	76

— NEXT GAME —

Dec. 27-30 Far West Classic

SWIMMING POOL — TELEPHONES — TELEVISION — AIR CONDITIONED

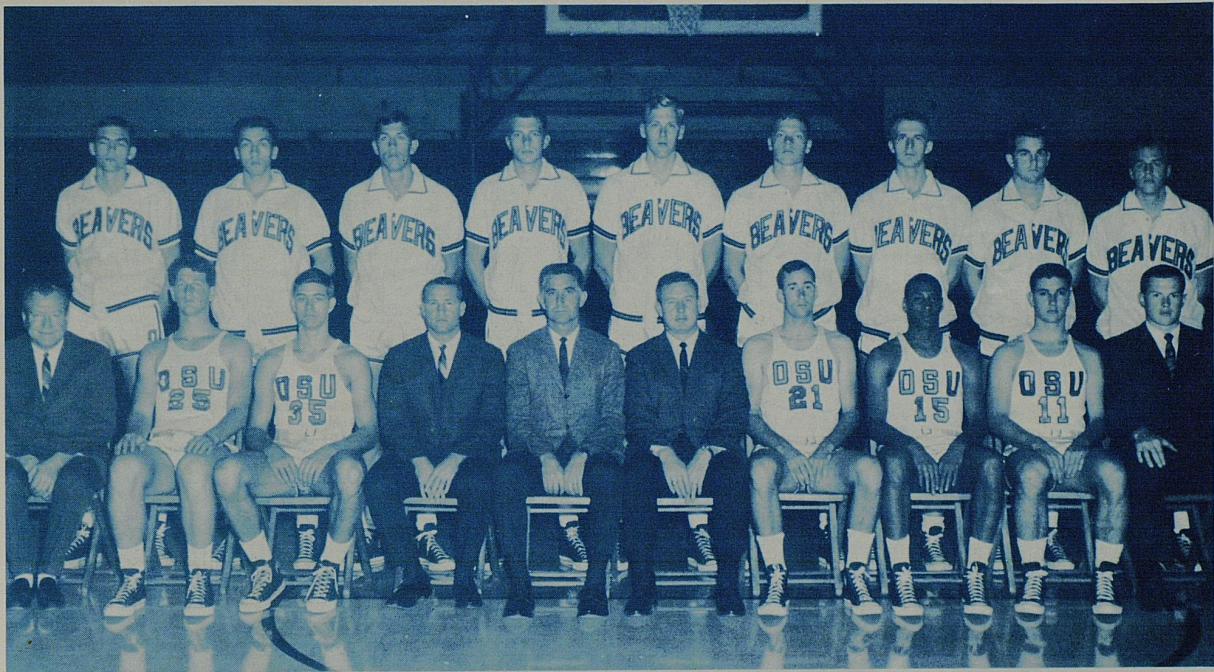
Ranch Motel

ROBERT LUTES, Owner

1133 WINCHESTER ROAD—EASTERN CITY LIMITS, U.S. 60
LEXINGTON, KENTUCKY



PHONE 255-4273



FRONT ROW (left to right)—Trainer Bill Robertson, Elliott Levin, Dean Duistemars, Assistant Coach Jim Anderson, Head Coach Paul Valenti, Athletic Director Jim Barratt, Jeff Cudworth, Dave Moore, Gary Allen and Student Manager Terry Vaughn. BACK ROW—Loy Petersen, Brian Zacharias, Karl Weide, Jeff Kuter, Gary Wilken, Ed Fredenburg, Larry French, Vince Fritz and Bob Franz.

OREGON STATE UNIVERSITY ROSTER

No.	Name	Pos.	Class	Age	Ht.	Wt.	Ltrs.	Hometown
10	Bob Franz	G	Jr.	20	6-0	180	1	Sacramento, Cal.
11	Mike Markham	G	Soph.	19	5-9	165	0	Riddle, Ore.
14	Elliott Levin	G	Soph.	19	6-3	200	0	Los Angeles, Cal.
15	Dave Moore	F-G	Soph.	20	6-1	175	0	Dallas, Tex.
21	Brian Zacharias	F	Soph.	19	6-4	205	0	Sacramento, Cal.
22	Bill More	F	Soph.	19	6-3	190	0	Portland, Ore.
23	Gary Wilken	C	Jr.	20	6-8	230	1	Fairbanks, Alaska
24	Larry French	F	Sr.	21	6-6	200	2	Pendleton, Ore.
30	Ed Fredenburg	C	Sr.	21	6-6	210	2	Coos Bay, Ore.
31	Vince Fritz	G	Soph.	19	6-4	192	0	Portland, Ore.
32	Loy Petersen	F	Jr.	21	6-5	205	1	Anaheim, Cal.
33	Harry Gunner	F	Sr.	22	6-5	225	1	Port Arthur, Tex.
34	Jeff Kuter	C	Soph.	20	6-7	190	0	Vancouver, Wash.
35	Dean Duestemars	F-G	Soph.	19	6-4	192	0	Bell Flower, Cal.

HEAD COACH—Paul Valenti (2 Years at OSU—Won 37, Lost 17)

ASST. COACH—Jim Anderson

TRAINER—Bill Robertson

MANAGER—Terry Vaughn

ATHLETIC DIRECTOR—Jim Barratt

Nickname—Beavers

Location—Corvallis, Oregon

1965-66 Record—Won 21, Lost 7

Publicist—John Eggers

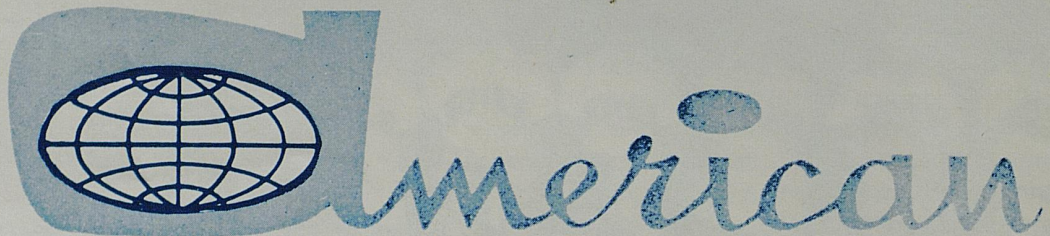
Enrollment—12,600

Colors—Orange and Black

Conference—Pacific-8

UKIT Record—Won 1, Lost 1 in 1962

A Kentucky-Owned Company



BUSINESSMEN'S LIFE INSURANCE COMPANY

P.O. BOX 8075

LEXINGTON, KENTUCKY 40503

PHONE 278-2351

HOME OFFICE
104 LOWRY LANE

AGENCY OFFICE
104 LOWRY LANE

Kennedy Book Store

U.K. Shirts — Pennants — Decals
Textbooks — School Supplies

LEXINGTON TRANSIT CORP.

Avoid "Parking Temper"



RIDE THE BUS
TO THE GAME

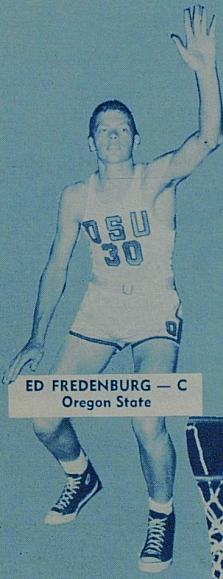
Charters For All Occasions



Phone
255-6470



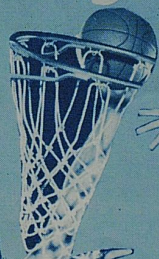
DEAN DUITEMARS — G
Oregon State



ED FREDENBURG — C
Oregon State



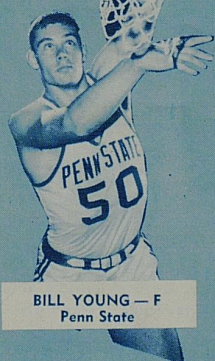
DENNIS BERKHOLTZ — G
Kansas State



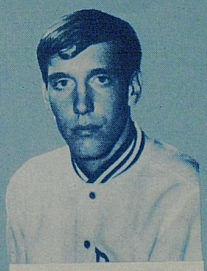
BILL STANSFIELD — F-C
Penn State



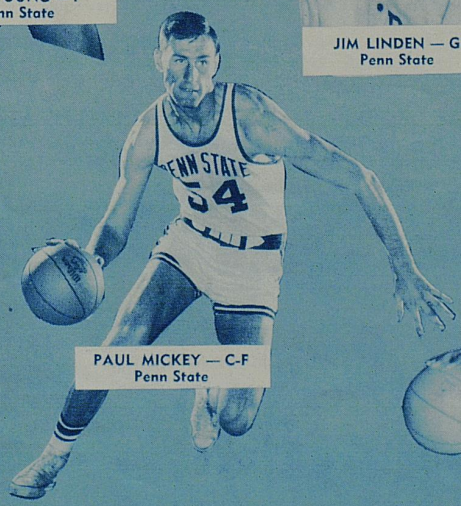
GARY GAMBLE — F
Kentucky



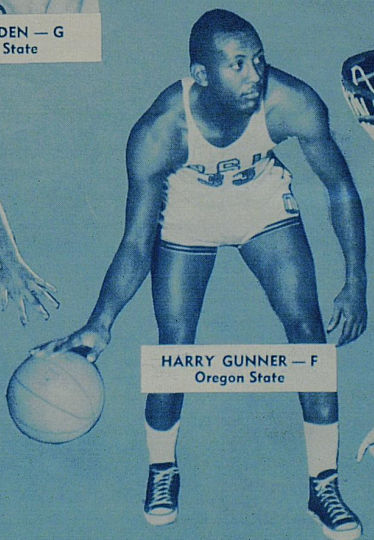
BILL YOUNG — F
Penn State



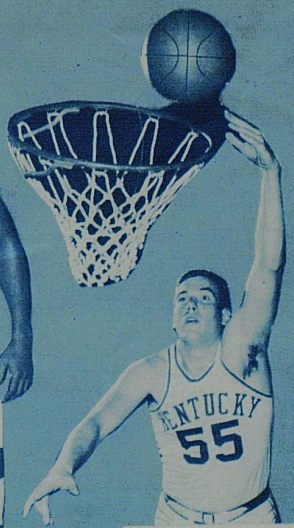
JIM LINDEN — G
Penn State



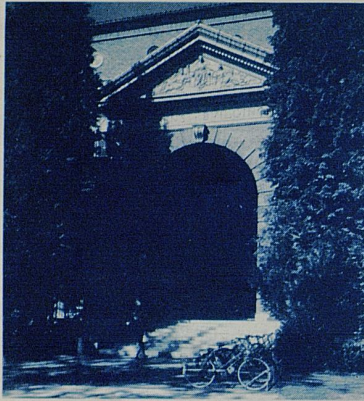
PAUL MICKEY — C-F
Penn State



HARRY GUNNER — F
Oregon State



THAD JARACZ — F-C
Kentucky



WOMEN'S BUILDING, Oregon State



MEMORIAL UNION BUILDING, Oregon State

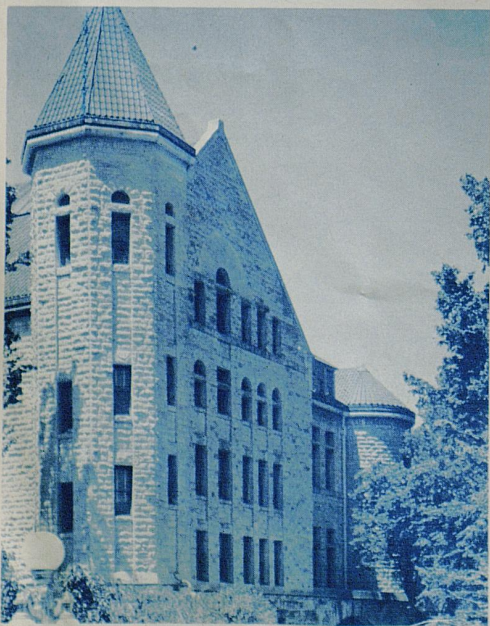


FRED LEWIS PATTEE LIBRARY, Penn State

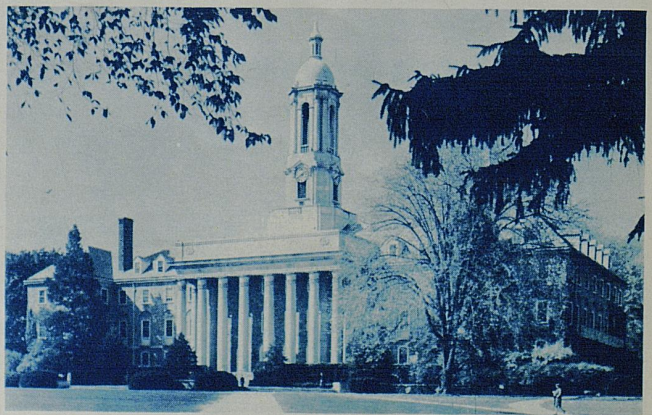


ANDERSON HALL, Kansas State

Campus Scenes Of Visiting Universities



FAIRCHILD HALL, Kansas State



OLD MAIN, Pennsylvania State

**UNIVERSITY OF KENTUCKY INVITATIONAL TOURNAMENT
INDIVIDUAL SINGLE GAME RECORDS**

Most Points Scored	47
(Bill Bradley, Princeton vs. Wisconsin—3rd Place Game, 1963)	
Most Field Goal Attempts	37
(Bill Bradley, Princeton vs. Wisconsin—3rd Place Game, 1963)	
Most Field Goals	18
(Bill Bradley, Princeton vs. Wisconsin—3rd Place Game, 1963)	
Most Free Throws Attempted	17
(Jerry Bird, Kentucky vs. Dayton—Championship Game, 1955)	
(Tied by Roger Newman, Kentucky vs. Illinois—1st Round, 1960)	
Most Free Throws Made	12
(Jerry Bird, Kentucky vs. Dayton—Championship Game, 1955)	
(Tied by Larry Pursiful, Kentucky vs. Kansas State—Championship Game, 1961)	
Most Rebounds	27
(Ron Johnson, Minnesota vs. North Carolina—1st Round, 1957)	

HIGH POINT PERFORMERS BY YEARS (Two Games)

1965 Louie Dampier (Kentucky)	46	1958 Jerry West (West Virginia)	48
1964 Henry Finkel (Dayton)	64	1957 Ron Johnson (Minnesota)	56
1963 Bill Bradley (Princeton)	77	1956 Jim Krebs (S.M.U.)	47
1962 Cotton Nash (Kentucky)	57	1955 Jim Paxson (Dayton)	51
1961 Larry Pursiful (Kentucky)	60	1954 Phil Grawmeyer (Kentucky)	41
1960 Bill Lickert (Kentucky)	43	1953 Cliff Hagan (Kentucky)	55
1959 Jerry West (West Virginia)	70		

**UK INVITATIONAL TEAM RECORDS
(Single Game)**

Most Points Scored	108	Most Rebounds	74
(Kentucky 108 vs. Wisconsin—1st Round, 1963)		(Dayton vs. West Virginia—Third Place Game, 1964)	
Most Points Both Teams	193	Fewest Personal Fouls	7
(Kentucky 108 vs. Wisconsin 85—1st Round, 1963)		(Kentucky vs. SMU—1956)	
Fewest Points Scored	38	Most Personal Fouls	32
(Southern California vs. LaSalle—1st Round, 1954)		(West Virginia vs. St. Louis—1st Round, 1959)	
Fewest Points Scored, Both Teams	87	Most Personal Fouls, Both Teams	51
(LaSalle 49 vs. Southern California 38—1st Round, 1954)		(North Carolina 29 vs. West Virginia 22—Championship Game, 1957)	
Most Field Goals Attempted	98	Biggest Margin of Victory	35
(Kentucky vs. SMU—1st Round, 1956)		(Kentucky 91, Indiana 56—Championship Game, 1965)	
Most Field Goals	44	Smallest Margin of Victory	1
(Kentucky vs. Wisconsin—1st Round, 1963)		(West Virginia 87 vs. St. Louis 86—1st Round, 1959)	
Most Free Throws Attempted	47	(Tied by St. Louis 54 vs. California 53 (1 OT)—1st Round, 1960)	
(St. Louis vs. West Virginia—1st Round, 1959)		Overtime Victories—St. Louis twice in 1960	
Most Free Throws Attempted, Both Teams	80	(St. Louis 54 vs. California 53 (1 OT), St. Louis 74 vs. Kentucky 72 (1 OT))	
(Kentucky 43 and Illinois 37—1st Round, 1960)			
Most Free Throws Made	38		
(St. Louis vs. West Virginia—1st Round, 1959)			

1965 ALL-TOURNAMENT TEAM

Louie Dampier (6-0 Junior Guard)	Kentucky
Pat Riley (6-3 Junior Forward)	Kentucky
Larry Conley (6-3 Senior Forward)	Kentucky
Tommy Kron (6-5 Senior Guard)	Kentucky
Thad Jaracz (6-5 Sophomore Center)	Kentucky

1965 UKIT MOST VALUABLE PLAYER

Louie Dampier	Kentucky
---------------	----------

LEADING SCORERS OF 1965 UKIT

Louie Dampier (Kentucky)	46 points
Pat Riley (Kentucky)	38 points
Sam Peshut (Air Force)	33 points
Steve Smith (California)	32 points

UKIT PARTICIPANTS THROUGH THE YEARS

(Listed Alphabetically)

Team	Record	Titles	Years Played
Air Force	Won 0, Lost 2		1965
California	Won 2, Lost 2		1960, '65
Dayton	Won 3, Lost 3	'55	1955, '56, '64
Duke	Won 0, Lost 2		1953
Illinois	Won 3, Lost 3	'64	1956, '60, '64
Indiana	Won 1, Lost 1		1965
Iowa	Won 0, Lost 2		1962
Kansas State	Won 1, Lost 1		1961
KENTUCKY	Won 21, Lost 5	(8)	(Every)
LaSalle	Won 2, Lost 2		1953, '54
Minnesota	Won 1, Lost 3		1955, '57
North Carolina	Won 1, Lost 3		1957, '59
Ohio State	Won 0, Lost 2		1958
Oklahoma State	Won 1, Lost 1		1958
Oregon State	Won 1, Lost 1		1962
Princeton	Won 1, Lost 1		1963
St. Louis	Won 3, Lost 1	'60	1959, '60
Southern California	Won 1, Lost 1		1954
Southern Methodist	Won 1, Lost 1		1956
Tennessee	Won 1, Lost 1		1961
UCLA	Won 1, Lost 1		1953
Utah	Won 0, Lost 4		1954, '55
Wake Forest	Won 1, Lost 1		1963
West Virginia	Won 6, Lost 4	'57, 59	1957-8-9, '60, '64
Wisconsin	Won 0, Lost 2		1963
Xavier	Won 0, Lost 2		1961

Quality

IS ALWAYS YOUR BEST BUY

ANGELUCCI'S
KAUFMAN'S

MEYER'S
GRAVES, COX



THE QUALITY MEN'S STORES OF LEXINGTON

Borden's

ICE CREAM

Throughout
Central Kentucky



576 E. Third St. — Phone 254-2855

Lexington Insurance Agency, Inc.

Kentucky Central Building
Lexington, Ky.
Phone: 252-5576



Why wait for her to pout?
VOLUNTEER...to take her out
for dinner at **Jerry's** Restaurant