

The Kentucky Kernel

PUBLISHED ON TUESDAYS AND FRIDAYS

Member
National College Press Association
Kentucky Intercollegiate Press Association
Lexington Board of Commerce

Official Newspaper of the Students of the University of Kentucky, Lexington
Subscription \$2.00 a year, Entered at Lexington, Ky., Postoffice as second class mail matter

HERE SHALL THE KERNEL PRESS ALL STUDENT RIGHTS MAINTAIN

LAWRENCE HERRON, Editor-in-Chief
LOUISE THOMPSON, Managing Editor

Assistant Editors
John M. Kupper, Marvin C. Wacht
Bliss Walton, Robert Baxter

RALPH E. JOHNSON, Sports Editor
Norbert Campbell, John B. Adams
Clayton Day, John B. Johnson

JOHNNIE CRADDOCK, Art Editor
Society Editors
Eleanor Smith, Elizabeth Hardin, Lila Grubb

Special Writers
James Curtis, Jacq. Roby

DOROTHY TANNER, Literary Editor
GILBERT KINGSBURY, News Editor
Assistant News Editors
Robert H. McLaughlin, Mary C. Terrell
Mary Alice Sellers, George M. Spencer

Reporters
Joan Carigan, James Palmer
Phil Arbery, Herman Graham
Norman Pearlman, Clifford Wallace
Jane Hamilton, Charles Caldwell
Betty Dimock, Marjorie West
Lilly Boyd, Mary Agnes Bivens
John Peter, John Peter
Myrtle Polk

COLEMAN R. SMITH, Business Manager
Assistants
Evelyn Treasbas, John Good, Neil Dishman
Advertising Staff
Oscar Haight, Bill Durrett

CAMERON COFFMAN, Circulation Manager

coach. Adolph Rupp came to the university in the fall of 1930 to assume his duties as head basketball coach. Despite pessimistic predictions that he would be unable to develop a winning team for several years to come, so commendable has been his success that in his two years at Kentucky Coach Rupp has as many times offered the university a tournament contender. Nevertheless, Kentucky has qualified for tournament play each of the last two years; each time she has watched her visions of a championship fade. Until the missing equation is supplied we can never hope to achieve a championship.

The team for 1932 has been a championship winner in everything but fact. It missed that by two points—one in each of two games, one scheduled, one tournament. Such a record as this maintained during the season against teams conceded outstanding conference contenders might well be the envy of any student body. The Wildcats played hard-fought basketball thru-out the season. The game in which they were defeated in tournament play by North Carolina has been acclaimed by spectators as one of the most outstanding games of the season. The standpoint of action and of skill in the history of conference basketball. The 1932 Wildcats merit praise of the highest order.

Lack of student spirit must be at fault. Although many of the team's followers may not have been aware of the exact time of its return, this stands a petty alibi for their failure to greet the Wildcats better than they did. Until the student body itself, can hold up its trust in a Kentucky team until that team, win or lose, feels responsible to that trust, we will never win a championship.

GLEE CLUBS

The university is becoming increasingly proud of the efforts made by its departments and organizations to branch out in ways that bring the talents and progress of university students before the public and reflect credit both upon them and upon the university. The university glee clubs have added their part to this worthy purpose and have succeeded in an extremely creditable way.

Before an audience that filled Memorial Hall to capacity, the combined glee clubs, assisted by members of the Philharmonic orchestra, presented Sunday afternoon what is probably the most pretentious production ever attempted by a student music group at the university. That they not only succeeded but succeeded to an outstanding degree in their performance upon the students who worked so valiantly in the long period of practice required for such an achievement, as well as upon those who so ably assisted and directed them in their efforts.

Especially is tribute due to Professor Laupert, whose patient and faithful direction made possible the success of the production. To praise one whose ability and interest in the university has been so many times proved would be superfluous, but to express appreciation and gratitude is only to speak for the student body at large as well as for those townspeople who were present Sunday.

Literary

DISILLUSION

Last night we strolled together, hand in hand
Away from all confusion to the Never-Never Land,
To the land of peace and quiet, the land of old romance,
Where we listened to the night winds and watched the fireflies dance.
We drank in all the beauty of that happy golden world—
Tenderness and peace, and precious dreams untold—
Gone is all the magic, romance, and lovely dreams—
Reality has conquered, and life is what it seems.

—PAULINE E. BRISKER

A ROAD

There is a beauty in a road
A-windin' and a-turnin'
Forever designin' just beyond
To start this way and that
With never thinkin' to grow tired,
But ever in a hurry
To reach that endless goal ahead
It tries so vainly to o'er take
So life is like that windin' road
A-doggin' in and out
Forever just ahead and on,
It turns and bends and teases us
To follow all its many shams
Till we are stumped in wonderin'
Just what the way should be

—N. TAYLOR

DOTES AND ANTI-DOTES

By CRAIG VAN DRUTEN

Tid-Bits

John Cookley appeared with a "Jean Harlow" blonde at the Den during the music hour and created quite a disturbance. If John should give us her name and address, it would save us a lot of time asking curious questions. Lois Grubbs, our Alpha Delta Theta friend, is back in school much to the approval of Bob Featherston. Frank Fowler made his appearance on the scene with a new mustache. Kappa Ethel Duckner is back on a visit. Cousin Ethel, the wagon agrees with you stay on it, old pal. Saw Hazel Baucum with her new boy friend, "TOMMY." Watch out, Hazel, Old Dan Cupid has been shooting a lot of arrows at you, gang.

Marriage

It has been rumored that Alice and Bob Montgomery have ventured upon the gigantic Sea of Matrimony. Reporters have been calling from all parts of the state; therefore, I gather that these little ducky-wuckies are important.

Leap Year Dance

Alphawettes Hugh Adcock was the queen of the ball. The latest interview with Miss Adcock revealed that she was too thrilled for words. The Kappas decided that they would not play that way so they would not attend—may be a hoax to cover the fact that they are broke.

Sober

There has been much criticism of the Military Ball. Ettes said the ball was entirely too sober. Gents seemed to like the sober dance, but it was not to the liking of the weaker sex.

The Kappas Slip

Kappa Ruth Willis and pal sneaked off from the other children to the Military Ball. Ettes said the man being Kappas, good little girls, and Spring skittish, the ettes donned roller skates, hitched their ride, and rolled smoothly along. Skate slipped, Willis scattered. Whole business rather blissy.

Communications

A NATIONAL UNIVERSITY
Editor's Note: In the following excerpts from a letter received no attempt is made to give the details of the plan which the writer presents. Readers desiring further details must communicate direct with the writer.
Slade, Kentucky,
February 15, 1932

Editor,
The Kentucky Kernel

After reading in The Kernel today your editorial, "War and Peace," I am submitting to you and the students of the University of Kentucky a plan, upon which I would enjoy receiving the individual criticism and advice of the students both men and women, also the faculty.

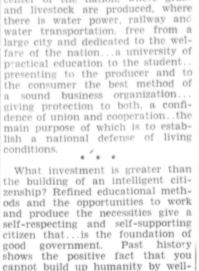
We have just passed through a period of depression into an age of sorrow. About 90 per cent of the people of our nation have the embarrassment of poverty, of being unable to meet their debts, of losing their homes...helpless to give assistance when they would be glad to make sacrifices to help build up national prosperity...Why should this condition exist?...What is wrong?...Our government officials are becoming discouraged; as citizens we are going to bow in submission?

Hundreds of young people have had to give up their school work through poverty. The unemployment situation has made it impossible for the poor to attend the universities. If we had a national university with a service scholarship for worthy students, they could be moulding their lives into a fine type of future citizen. A fee scholarship to a student who would be willing to give a few hours a day to his university would create sterling characters and eliminate the lazy society parasites.
That is why the writer appeals

FREE
CALLED FOR AND DELIVERED
— We Brought Low Prices to Lexington —
Our Work Is As Good As The Best
DRESSES Cleaned
COATS and
O'COATS Pressed
SUIES and
TUXEDOS 69c
EVENING DRESSES
CASH AND CARRY 59c
All Work Guaranteed and Insured
Jane Dry Cleaners
610 FAYETTE BANK BLDG.
PHONE: ASHLAND 2764

QUIS VADIT?

—Craddock



By Johnnie Craddock

This man O.K.'s social calendars and eats his soup with a knitting needle. He is very fond of hop scotch, graham crackers, and watermelon, and takes a delight in collecting milk bottles and wrapping paper. Although perfectly normal in all other ways, he is inclined to be round shouldered from picking up cigar and cigarette butts in the hallways and from the floors of instructor's offices.

ROAMIN' THE RIALTO

—"SHANGHAI EXPRESS"

"Shanghai Express," on its sweeping tour of the country, stops this week at the Kentucky theatre.

DO YOU KNOW THAT

WARNER BAXTER tried for six months to get a job in a Hollywood studio without success, but after he had scored a hit on the stage, contracts were offered to him from most of the studios!

"DELICIOUS"

Wednesday and Thursday at the Strand is shown "Delicious," the latest production of the Gaynor-Farrell Company. Love-Makers Incorporated, Miss Dietrich and Miss Gandy, as the thrifty Scotch lassie, seems to have been born for this part. And it is not a matter of great surprise that Charles Farrell, as the champion polo player, causes her heart to palpitate unduly. Brendel, as the servant with social aspirations, contributes to the comedy and gaiety that runs thru the play. It is all told to a charming background of George Gershwin music.

"PRESTIGE"

The Lexington theater-goer will be treated to some delightful entertainment by Ann Harding in "Prestige" at the Ben All this week. Two white persons in a native colony of Indo-China battle along, not giving way to the fascinating and cruel beauty of the Indies, but holding it all—bound only by their loyalty to military law—trying to uphold the prestige of the white race. Woven through the plot are the mysterious religious rituals and customs of the unknown natives. Harding, as the cultured Parisienne who follows her soldier-lover into exile, is superb. In the two principal

Dilapidated Bridge Indicates Passage Of State Traditions

By VIRGINIA WADDLE

Our state is inclined to have very little sentiment about any of its buildings and spots that fairly reek with interesting stories of old days. How different from the way they have been preserved and restored in the old country. Now is the time for America to realize the folly of this destruction, and to spend its time and efforts repairing its landmarks.

An example of America's attitude which tends more to modernization than to preservation, is the covered, wooden bridge at Camp Nelson, on the Kentucky river, which is rapidly passing into disuse and neglect. When built in 1836 by Paul Wernag, it was said to be the longest bridge of its type in the world. There are not many covered bridges left in Kentucky, and this one should be preserved for several reasons, romantic, historical, as an engineering feat, and for future generations. Doubtless, the bridge, if kept under a tight roof, would last almost indefinitely, although the weatherboarding would have to be renewed at intervals. One of the approaches has been gone for some time—maybe they both are gone now—and what has become a more or less lasting attraction for visitors at Camp Nelson, increasing in interest with the passing time, stand by awed, while a few destructive individuals destroy or fail to repair our landmarks? Our old, historic spots, being so rapidly demolished, are among the most important to remind the present and future generations of the sacrifices and accomplishments of their ancestors.

The span is 276 feet long without a single intervening support. It was built further up the river where timber was plentiful and floated down stream in sections, and was put together with wooden pins. When this bridge was tested and accepted it was considered one of the greatest engineering feats of the age, and the occasion was attended by a great crowd. It has been an object of interest to tourists and it is with regret that many see it fall into disuse, and pass out of existence.

Will the many citizens of America stand by awed, while a few destructive individuals destroy or fail to repair our landmarks? Our old, historic spots, being so rapidly demolished, are among the most important to remind the present and future generations of the sacrifices and accomplishments of their ancestors.

Headline from Tennessee paper: "Foul Pitching Finals Run Off." They must have been!

W. W. STILL
Kodaks - Eastman Films
Developing and Printing
129 West Short Lexington

We know why men smoke PIPES

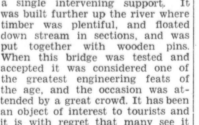
WOMEN don't smoke pipes.

They're not the style for women. But pipes are the style for men, and more than that, a pipe and good tobacco gives a man greater smoking pleasure than tobacco in any other form.

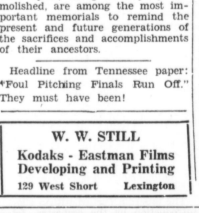
In 42 out of 54 American colleges and universities Edgeworth is the favorite pipe tobacco. Cool slow-burning burleys give this fine tobacco exactly the character that college men like best of all.

Try a tin of Edgeworth yourself! You can buy Edgeworth wherever good tobacco is sold. Or if you prefer, you can get a special sample packet free: write to Larus & Bro. Co., 105 S. 22d St., Richmond, Va., and ask for it.

Edgeworth is a blend of fine old burley, with its natural flavor enhanced by Edgeworth's distinctive and exclusive eleven-step process. Buy Edgeworth anywhere in two forms—Edgeworth Ready-Rubbed and Edgeworth Plug Slice. All sizes, 15¢ packet package to \$1.50 pound humidator tin.



EDGORTH SMOKING TOBACCO



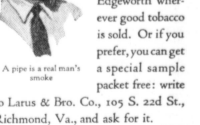
We know why men smoke PIPES

WOMEN don't smoke pipes. They're not the style for women. But pipes are the style for men, and more than that, a pipe and good tobacco gives a man greater smoking pleasure than tobacco in any other form.

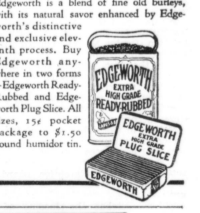
In 42 out of 54 American colleges and universities Edgeworth is the favorite pipe tobacco. Cool slow-burning burleys give this fine tobacco exactly the character that college men like best of all.

Try a tin of Edgeworth yourself! You can buy Edgeworth wherever good tobacco is sold. Or if you prefer, you can get a special sample packet free: write to Larus & Bro. Co., 105 S. 22d St., Richmond, Va., and ask for it.

Edgeworth is a blend of fine old burley, with its natural flavor enhanced by Edgeworth's distinctive and exclusive eleven-step process. Buy Edgeworth anywhere in two forms—Edgeworth Ready-Rubbed and Edgeworth Plug Slice. All sizes, 15¢ packet package to \$1.50 pound humidator tin.



EDGORTH SMOKING TOBACCO



—and that's what the statistician does for industry

Definite knowledge of "where we are" and "what lies ahead" is as vital in business as in flying. For this expert navigating, the Bell System has long relied upon statisticians.

These men study present and prospective industrial, economic and social conditions in all parts of the country. They gather facts—analyze them, correlate them, discover their significance to the telephone business, draw guidance from them. They study and forecast the changing requirements of the public for telephone service. They estimate the probable future demand for new services, such as radio telephony to foreign lands and ships at sea. They keep the executives advised as to current progress towards the objectives thus carefully determined.

Only by plotting a course scientifically can the Bell System continue to develop along sound lines.

BELL SYSTEM

A NATION-WIDE SYSTEM OF INTER-CONNECTING TELEPHONES

SOCIETY

ELEANOR SMITH EMILY HARDIN

The Net I made you many and many a song...

It was as tho' I curved my hand And dipped sea-water eagerly...

Freshman Tea Freshman and new students in the home economics department...

CALENDAR

Tuesday, March 1 Vocational guidance group meeting...

Y. W. C. A. freshman and senior cabinet meetings...

Y. W. C. A. vespers, 7 p. m., followed by senior cabinet meeting...

Wednesday, March 2 Exhibition of paintings and textiles...

President and Mrs. McVey's afternoon tea for faculty and students...

Faculty Bowling league, 8 p. m., Ammerman Alleys.

Pitch club meeting at Maxwell Presbyterian church, 12 noon.

Vocational guidance group meeting with Mrs. J. B. Misses, advisor...

Thursday, March 3 Y. W. C. A. dormitory meeting...

Vocational guidance group meeting with Miss Carrie Lee Hathaway...

Military Ball Scabbard and Blade military fraternity...

Officers of Scabbard and Blade are Messrs. Clarence R. Yeager...

Chaperones were: President and Mrs. Frank L. McVey, Dean and Mrs. Paul P. Boyd...

Zeta Tau Alpha Formal Zeta Tau Alpha society entertained with its spring formal...

Members of the active chapter and pledges were the hostesses: Active Chapter—Misses Cathryn Aufenkamp...

Alumnus—Miss Gladys Wilda The hostesses were assisted in entertaining by the chaperones...

About two hundred guests were present from the men's fraternities and visitors...

Mr. John Venn spent the past week-end in Ludlow.

Mr. Robert Kearney is convalescing at his home at Ft. Thomas.

Mr. Jack Wert spent the week-end at his home in Ft. Mitchell.

Miss Helen Lay had as her guests for the Campus Club dance...

LibRARY STAFF The university library staff held a social meeting at 2:30 o'clock...

Zeta Tau Alpha Formal Zeta Tau Alpha will entertain with a formal dance from nine to twelve...

The active members are Misses Kathryn Aufenkamp, Georgia Bird, Martha Carlton...

The pledges are Misses Lucy Jean Britton, Helen Fisher, Achille Fisher...

FRATERNITY ROW Zeta Tau Alpha announces the pledging of Miss Virginia Lamb...

Miss Jane Bland was a visitor at the Zeta Tau Alpha house for the week-end.

PI MU EPSILON Meeting Pi Mu Epsilon, honorary mathematics fraternity...

Alumnus Meeting Alpha Delta Theta alumnus met Saturday for luncheon...

Campus Club Entertained The Campus Club entertained with an informal dance from 9 to 12 Saturday...

Active members are Messrs. George Perry Snyder, Alexander Bruce, Archie Duncan...

FRATERNITY ROW Zeta Tau Alpha announces the pledging of Miss Virginia Lamb...

Miss Jane Bland was a visitor at the Zeta Tau Alpha house for the week-end.

PI MU EPSILON Meeting Pi Mu Epsilon, honorary mathematics fraternity...

Alumnus Meeting Alpha Delta Theta alumnus met Saturday for luncheon...

Campus Club Entertained The Campus Club entertained with an informal dance from 9 to 12 Saturday...

Active members are Messrs. George Perry Snyder, Alexander Bruce, Archie Duncan...

presented in a concert version, Sunday afternoon at 4 p. m. in the memorial hall...

The concert arrangement contains many of the famous airs and choruses of the great opera...

The program was as follows: Chorus of Nymphs—Girls' Glee Club 'Beloved Come'...

First bass—J. F. Adams, M. McIntosh, John Pardue, Thomas Owsley...

Second bass—Barran Pearman James Champion, Mills Darrell, Kenneth Keves...

Violins—LeRoy Smith, David Young Bruce Farquhar, Lee Cooks, Foster Krake...

Monday evening, Phi Beta, women's professional musical and dramatic fraternity of the University...

Phi Beta Entertain Monday evening, Phi Beta, women's professional musical and dramatic fraternity...

Monday evening, Phi Beta, women's professional musical and dramatic fraternity of the University...

At the induction, musicale and reception in the parlors at Patterson hall.

Misses Alice McDonald and Mary Ann O'Brien, Mary Pruitt, Mary

Elizabeth Renet, Marjorie Loretta Stoeber, of the social hour afterward.

Second solo—Sara Bethel, Loretta Bitterman, Mary Carter, Helen Darrell, Dorothy Day, Velma Danon...

Second tenors—Charles Mason, J. B. Lovett, John Rand, B. T. Bray, Harrison Elliott...

First bass—J. F. Adams, M. McIntosh, John Pardue, Thomas Owsley...

Second bass—Barran Pearman James Champion, Mills Darrell, Kenneth Keves...

Violins—LeRoy Smith, David Young Bruce Farquhar, Lee Cooks, Foster Krake...

Monday evening, Phi Beta, women's professional musical and dramatic fraternity of the University...

Phi Beta Entertain Monday evening, Phi Beta, women's professional musical and dramatic fraternity...

Monday evening, Phi Beta, women's professional musical and dramatic fraternity of the University...

At the induction, musicale and reception in the parlors at Patterson hall.

Misses Alice McDonald and Mary Ann O'Brien, Mary Pruitt, Mary

program and Miss Mary Margaret Howes of the social hour afterward.

The officers of Phi Beta are: Misses Emily Hardin, president, Dorothy Day, vice president...

Members are Misses Lois Robinson, Alice McDonald, Mary Margaret Howes, Lois Neal, Christine Johnson...

Associate members Misses Virginia Tyler, Cora Howard, Thelma Fox, Mrs. Nanette Egan, Madeline Shively Ruby Evans.

Phi Beta Entertain Monday evening, Phi Beta, women's professional musical and dramatic fraternity...

Monday evening, Phi Beta, women's professional musical and dramatic fraternity of the University...

At the induction, musicale and reception in the parlors at Patterson hall.

Misses Alice McDonald and Mary Ann O'Brien, Mary Pruitt, Mary

UNIVERSITY HIGH DISTRICT HOST

Class 'A' and 'B' Teams from Jessamine, Woodford, and Fayette to Meet

PLAY STARTS MARCH 4 University high school will be host on March 4 and 5, to the third district basketball tournament...

The play will start at 10 a. m. on Friday, when Henry Clay and Versailles meet. The second round of games will take place at session 2...

The eleven teams, six class 'B' teams and five 'A' class from the three counties will be entertained by the patrons of University high school...

Associate members Misses Virginia Tyler, Cora Howard, Thelma Fox, Mrs. Nanette Egan, Madeline Shively Ruby Evans.

Phi Beta Entertain Monday evening, Phi Beta, women's professional musical and dramatic fraternity...

Monday evening, Phi Beta, women's professional musical and dramatic fraternity of the University...

At the induction, musicale and reception in the parlors at Patterson hall.

Misses Alice McDonald and Mary Ann O'Brien, Mary Pruitt, Mary

Misses Alice McDonald and Mary Ann O'Brien, Mary Pruitt, Mary

net mentor at the university, as the other. The complete schedule for play in the tournament follows:

Friday Afternoon Class A Boys: 3:30 o'clock—Pleasance vs. University high. Class B Boys: 2:00 o'clock—Willmore vs. Midway.

Friday Night 7:00 o'clock—Linlee vs. Athens (class B). 8:00 o'clock—Nicholasville vs. winner (Henry Clay—Versailles), (class A).

Saturday Afternoon 2:00 o'clock—A class Semi-Finals 3:00 o'clock—B class Semi-Finals

Saturday Night 7:30—Preliminary 8:30—District Championship

Track Candidates Work-Out Daily

February weather conditions have hampered the varsity track aspirants in getting into shape but the majority of the squad are working out daily.

Upwards of ten men have reported since the initial day and among these are several who may give a solution to the problem of distance and middle distance men.

Jack Hickey, star from last year's freshman team, came out Monday and seems to be in fairly good shape. He will be used by Coach Shively in either the half-mile or the mile runs and is a speedy youngster.

Many of the members of the football squad are also taken and will report the second week in March.

The wet and muddy condition of the track has hindered the runners considerably as these boys will not round into good shape before the middle of March.

New men who have come out since the first list was published are Day, Hickey, O. B. Coffman and others whose names are not available.

The Y.M.C.A. and Y.W.C.A. have full time secretaries and the students are organized in groups for study of any phases of religious life in which they may be interested.

"I'd hate to be called an Outdoor Girl!"

Advertisement for Chesterfield cigarettes featuring a woman in a hat and a pack of cigarettes. Text includes: 'I'd hate to be called an Outdoor Girl!', 'THAT usually means a girl's a total loss in a tete-a-tete...', 'I like the simple sincerity of Chesterfield's advertising. Have you noticed it? There's no extravagance in the claims. Just everyday facts about the fine tobaccos they select and the painstaking way they develop the flavor and aroma.', 'I've never smoked a milder cigarette! And I never tire of the flavor... a fine natural tobacco taste. They burn evenly, too. Either they're rolled more carefully... or the paper's better. I feel the greatest confidence in Chesterfields. They satisfy me!'

Listen in... Hear Chesterfield's Radio Program. Nat Shilkret and his brilliant orchestra. Every night except Sunday... Columbia Broadcasting System... 10:30 E. S. T. Music that satisfies!

They Satisfy

