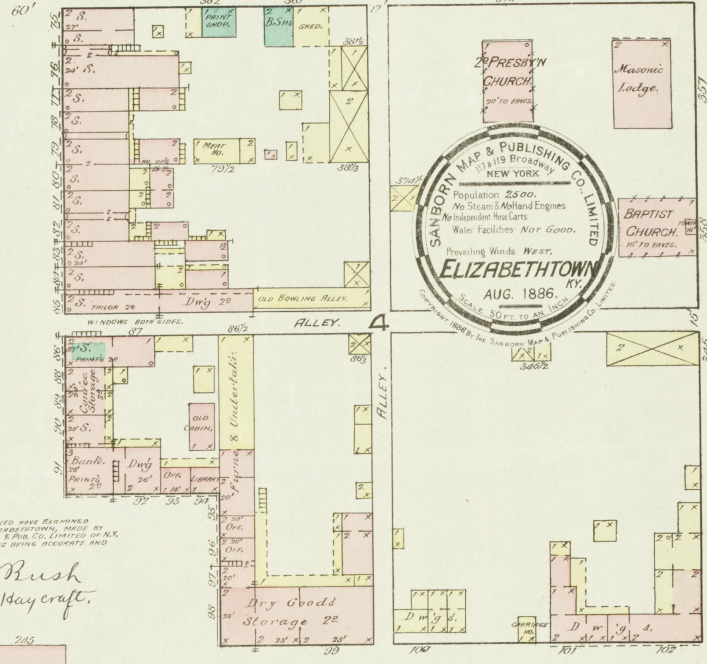
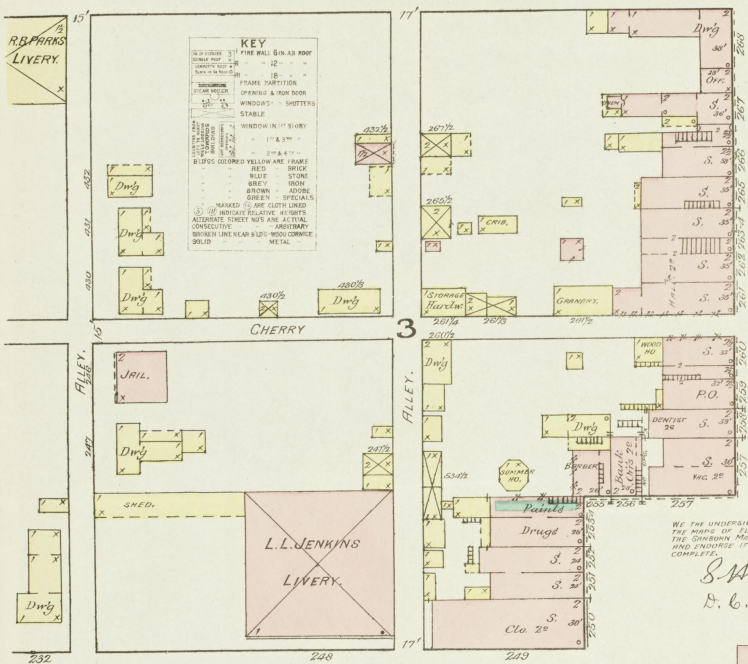
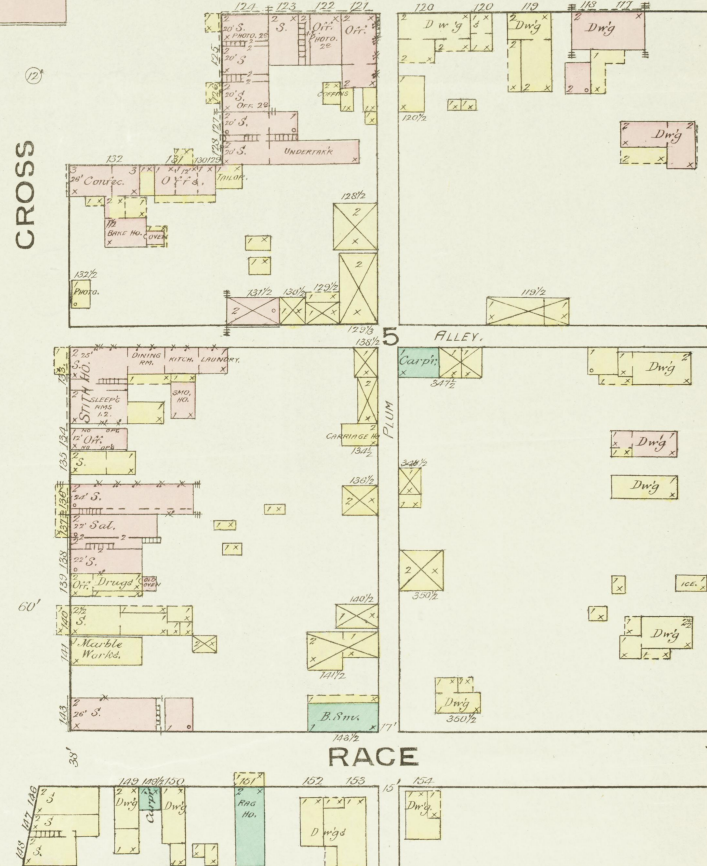
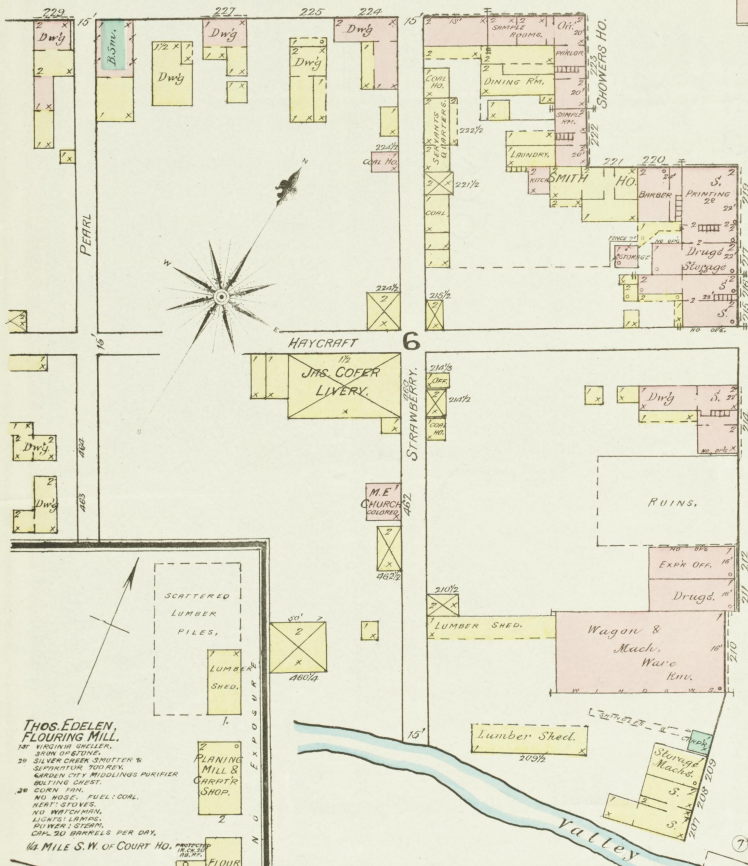


MULBERRY



WE THE UNDERSIGNED HAVE EXAMINED  
THE MAP OF ELIZABETHTOWN, MADE BY  
THE SAIBORN MAP & PUB. CO. LTD. IN N.Y.  
AND ENDORSE IT AS BEING ACCURATE AND  
COMPLETE.  
*S.W. Rush*  
*D. C. Haycraft.*

MAIN



RACE



POPLAR

60'

60'

60'

60'



MILES



CHRISTIAN CHURCH  
1470 EYES.

1

CROSS

2

8

KENNEDY

9

10

MULBERRY

DEPOT

DEPOT

ELIZABETHTOWN FLOURING MILL CO.  
O.P. & Wave Ho.

ELIZABETHTOWN MILLING CO.  
100' x 100' BLDG. 2 FLOOR.  
26 SHAFES, WOODLUMPS PURIFIER,  
HARVESTING, CONVEYOR, PAPER,  
SILVER COOK, SMUTTER & BRUSH MACH.  
AND, SIFTING, BRUSH, BRUSHING, CR. & CLEANER  
MILLS, CLAS. & GRIND. 100' x 100'  
BARRS & SUCTS OF WATERS 20'  
AND WATCHMAN, POWER SYSTEM,  
CAP. 60 BBL. PER 24 HOURS.

ASHTON DISTILLERY CO.  
REG. DISTILLERY NO. 403, 37<sup>th</sup> DIST.  
HARDIN CO. KY.  
1/4 MILE S.W. OF ELIZABETHTOWN.  
MASH, 1000 BUSH.  
YIELD, 25 BARRELS PER DAY.  
HEAT & POWER, STEAM.  
INDEPENDENT LIGHTS,  
NIGHT WORKMEN.

A. B. CLAD.  
Bonsted W. Ho's  
ON 3000 BARS  
CON. BARR. BARS.

Washing 28

Scale of Feet.

Calle Street

PRIVATE LANE

M.E. CHURCH  
HEAT-STOVE

PUBLIC SCHOOL

1<sup>st</sup> PRESBYT. CHURCH  
1470 EYES.

Washing 28

ENR.