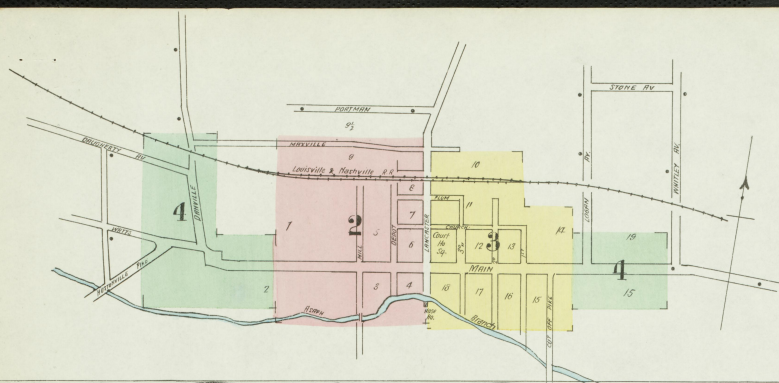


KEY	
1	FIRE WALL 6 IN. AS ROOF
2	CORNER
3	FRAME PARTITION
4	OPENING & HORN DOOR
5	SLAM WALLS
6	WINDOWS - SHUTTERS
7	STAIRS
8	WINDOW IN 1 st STORY
9	STAIRS
10	2 nd & 3 rd
11	COLORED YELLOW ARE FRAME
12	BRICK
13	STONE
14	GRAY
15	IRON
16	FIRE PROOF
17	SPECIALS
18	MARKED (S) ARE CLOTH LINED
19	INDICATE RELATIVE VEGETA
20	ALTERNATE STREET ROFS ARE ACTUAL
21	CONSISTING OF ARBITRARY
22	BROKEN LINE NEAR BIDS WOOD CORNER
23	METAL

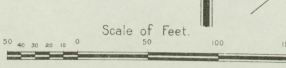
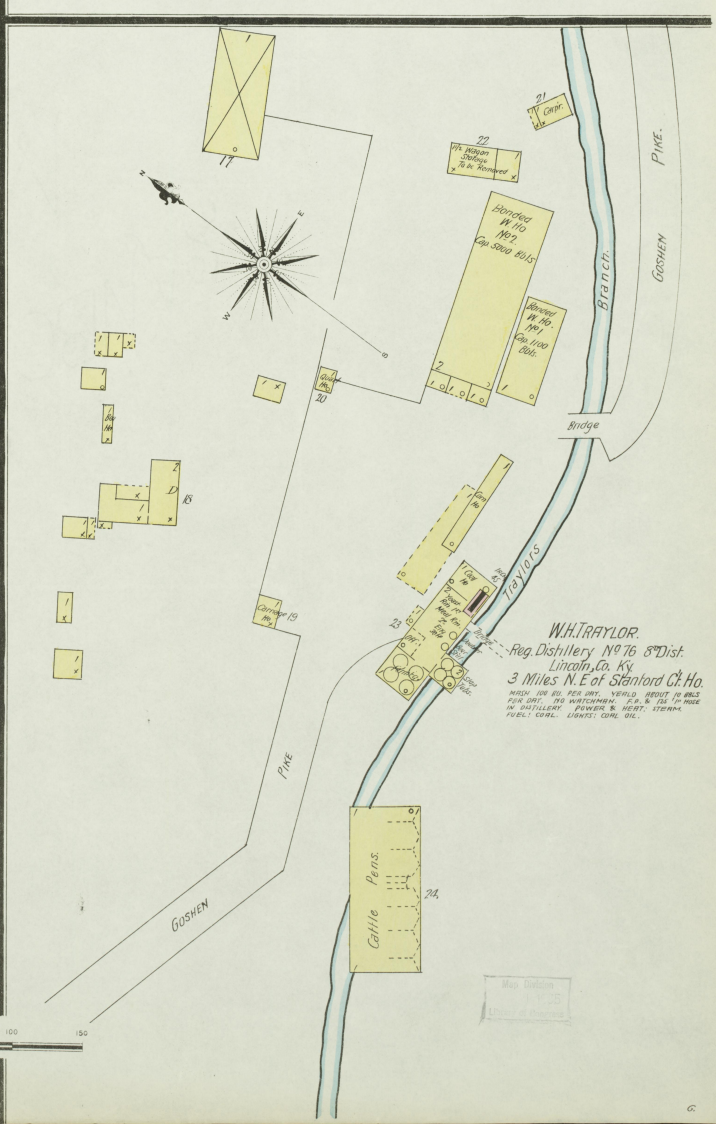
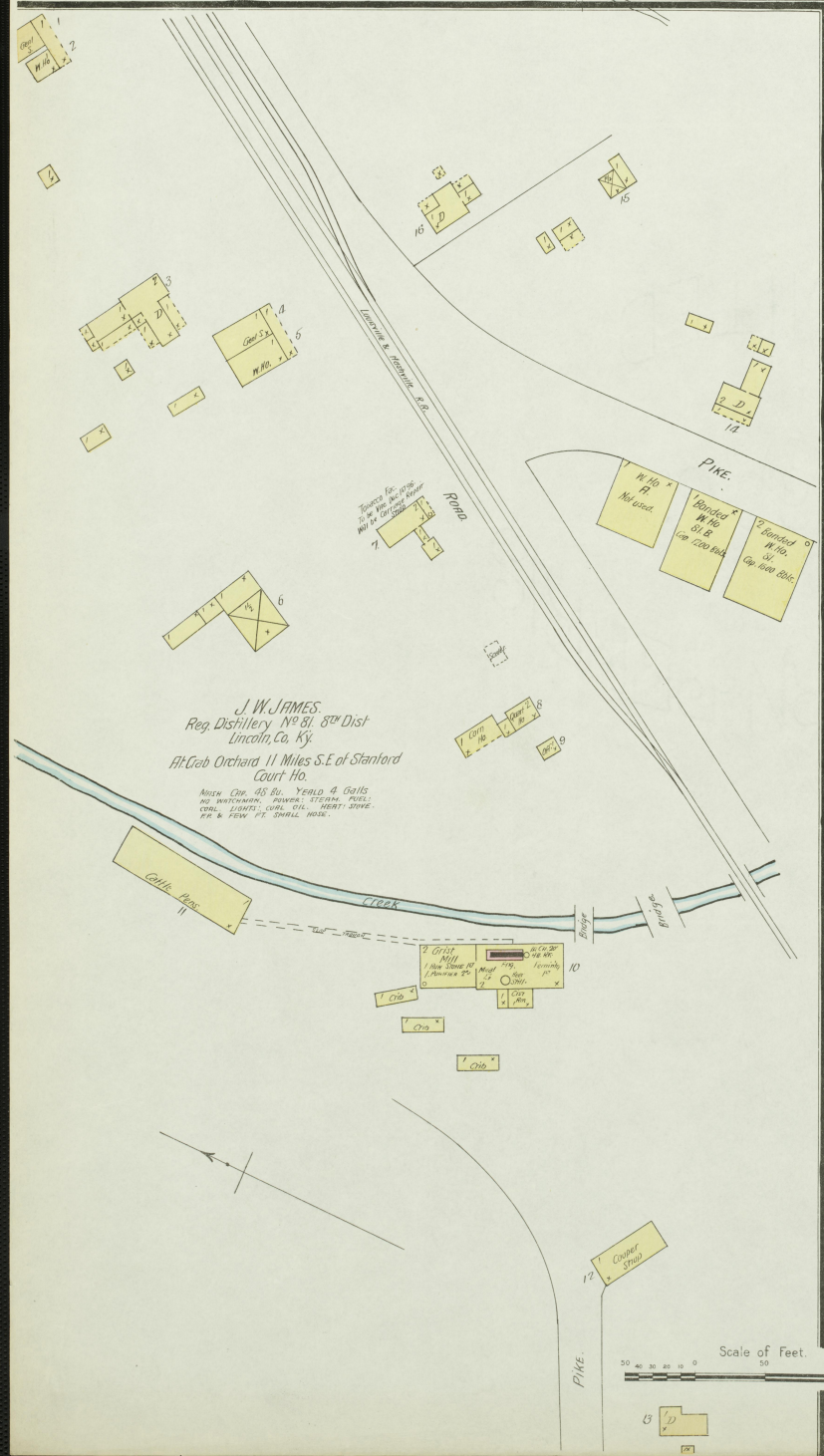
Note -
 Water Facilities - PRESSURE SYSTEM WATER FROM 250 FT. DEPTH BORING BY JOHN H. B. MILL, 5011 W. 10th ST. BORING PUMPED 5 MILES 8th & 9th MILES. 50th & 60th MILES. 75' DEPT. FIRE DEPT. 3 M. 0.5 OF 35 M. 100' DEPT. 1st M. 1.75' DEPT. 1.75 M. 1.75' TRUCK.



INDEX.

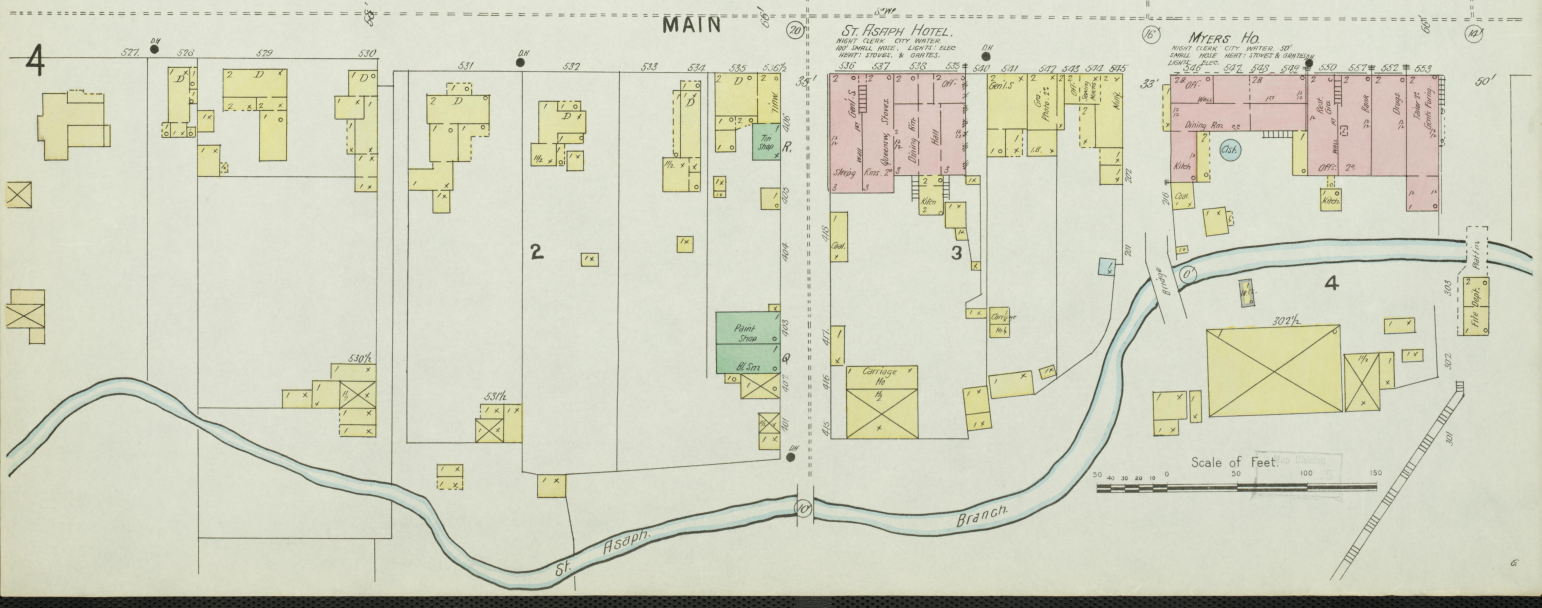
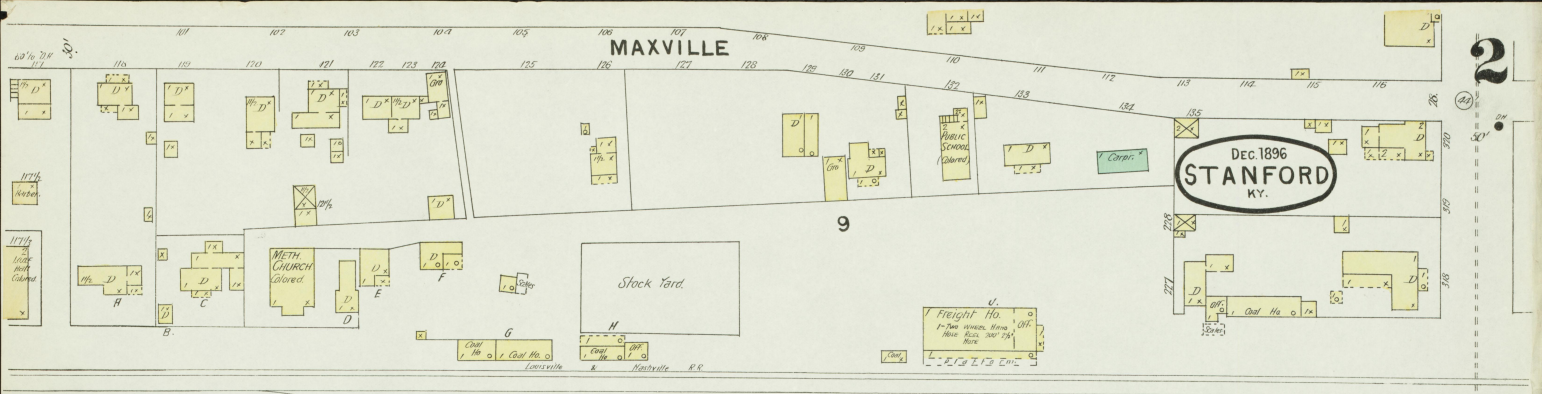
STREETS.	NUMBER	P	NUMBER	I	NUMBER
Church	101-100, arbitrary	2	Interior Journal Printing	2	
Depot to Lancaster	51-49, arbitrary	2	James J. W., Distillery	1	
Out of Pike	301-320, arbitrary	3	L. & N. R. R. Freight House	2	
Danville	401-416, arbitrary	4	Methodist Church (colored)	2	
Daugherty Ave.	201-210, arbitrary	3	Episcopal Church	2	
Depot	201-226, arbitrary	2	Myers Houses	2	
First	201-220, arbitrary	3	Presbyterian Church	3	
Lancaster	301-320, arbitrary	2	Public School (colored)	2	
Logan Ave.	401-410, "	4	St. Asaph Hotel	2	
Main	103-131, actual	4	Stanford Female College	2	
near Danville	300-228, "	4	Roller Mills	2	
near Lancaster	501-533, arbitrary	4	Water, Light & Ice Co.	3	
Maxville	601-631, "	3	Watts	4	
Mill	101-135, "	2	Baptist Churches	3	
	near Danville	2	Carpenter Hall	3	
	near Lancaster	3	Christian Church	3	
	401-424, arbitrary	2	County Court House	3	
			Walton's Opera House	3	

SPECIALS.



MAXVILLE

Dec. 1896
STANFORD
KY.



MAXVILLE

10

PLUM

BAPT. CHURCH

BAPT. CHURCH

CHURCH

12

CHRISTIAN CHURCH

13

14

LANCASTER

2

JAIL

LINCOLN Co. COURT Ho.

MAIN

4

WALTON'S OPERA Ho. 2^d

18

17

PRESB. CHURCH

16

15

CUT-OFF PIKE

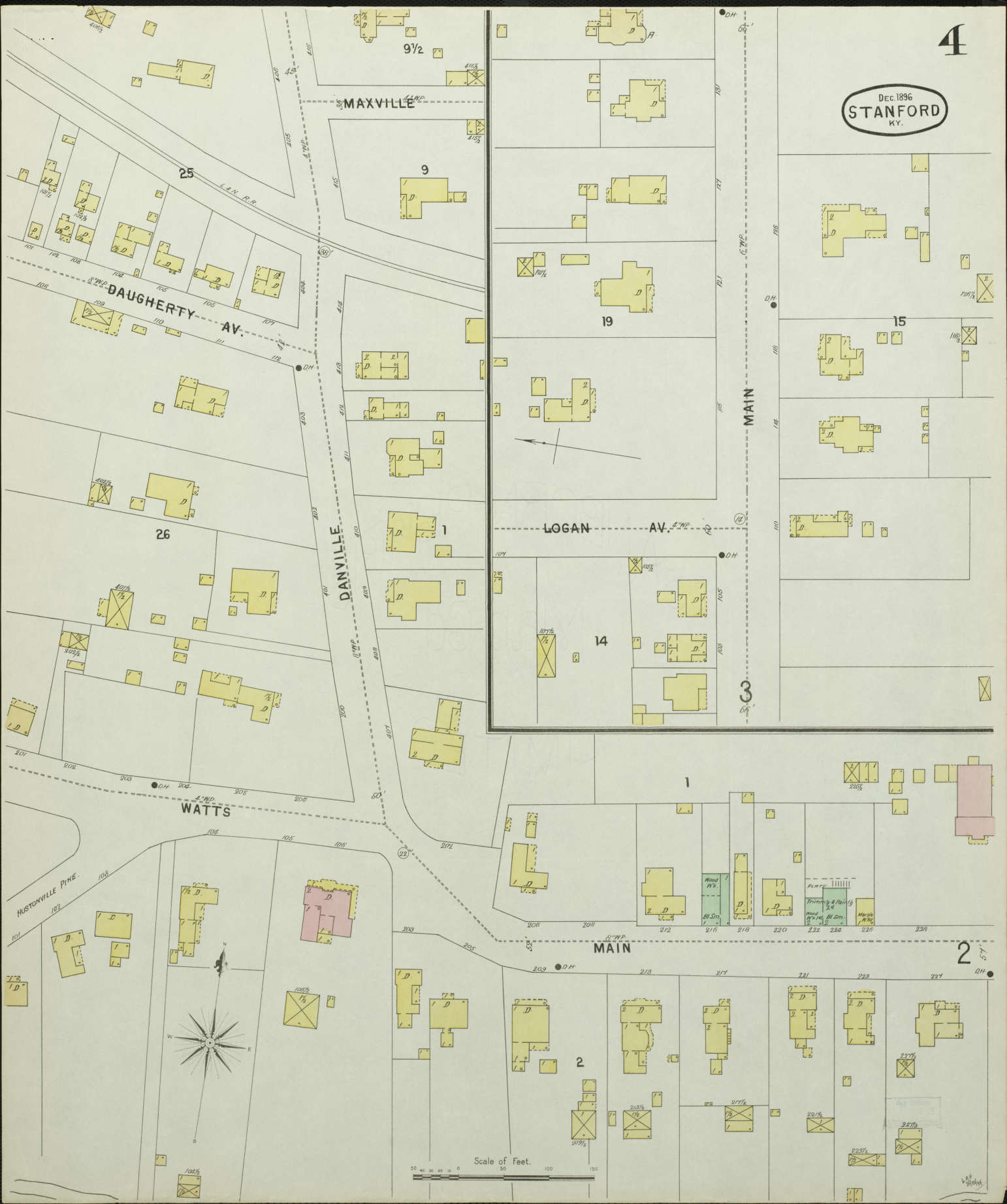
Scale of Feet.

Dec. 1896
STANFORD
N.Y.

THE STANFORD WATER, LIGHT AND ICE CO.

Power - Steam - Pumps - Gas - Lights - Elev. - Ho. Work
107 1/2 H.P. - 2 1/2 Miles Conduits - 2000 ft. Piping
7 Million Gal. Reservoir - 4 1/2 3/4 S.W. of Pond

Dec. 1896
STANFORD
KY.



Scale of Feet.
0 50 100 150