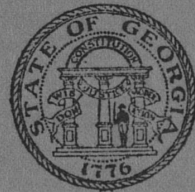


FW 4.14:
G 296/no.50



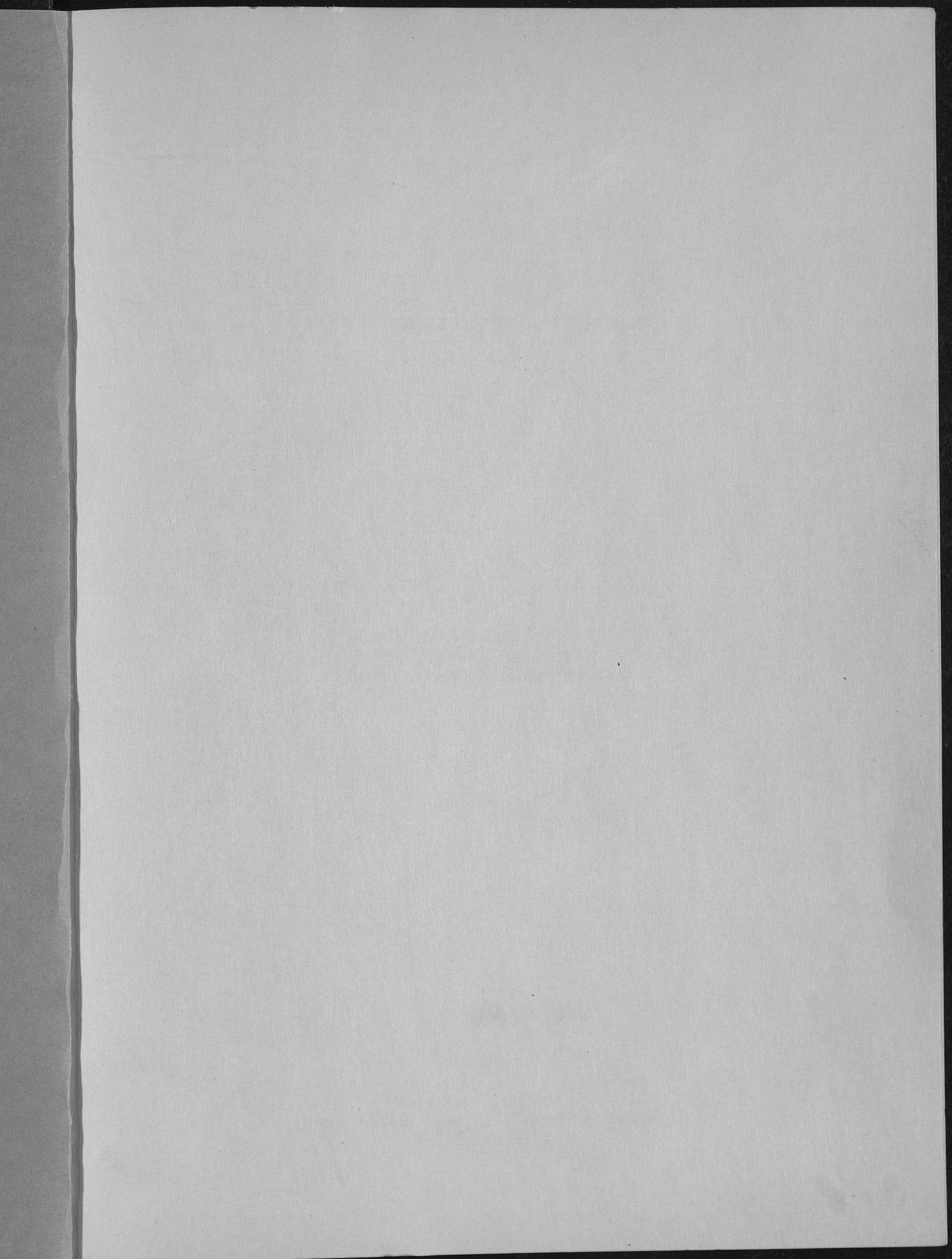
INVENTORY
OF THE
COUNTY ARCHIVES
OF GEORGIA

NO. 50 ECHOLS COUNTY
(STATENVILLE)



LIBRARY
UNIVERSITY of KENTUCKY

THE GEORGIA HISTORICAL RECORDS SURVEY
DIVISION OF PROFESSIONAL AND SERVICE PROJECTS
WORK PROJECTS ADMINISTRATION



INVENTORY OF THE COUNTY ARCHIVES
OF GEORGIA

NO. 50. ECHOLS COUNTY (STATENVILLE)

Prepared by

The Georgia Historical Records Survey
Division of Professional and Service Projects
Work Projects Administration

* * * * *

Atlanta, Georgia
The Georgia Historical Records Survey
September 1940

The Historical Records Survey Program

Sargent B. Child, National Director
N. Cecil Hill, Assistant State Supervisor in Charge

Division of Professional and Service Projects

Florence Kerr, Assistant Commissioner
Blanche M. Ralston, Chief Regional Supervisor
Jane Van De Vrede, State Director

WORK PROJECTS ADMINISTRATION

F. C. Harrington, Commissioner
Malcolm J. Miller, Regional Director
R. L. MacDougall, State Administrator

Georgia State Planning Board, Sponsor
Echols County Commissioners of
Roads and Revenues, Cosponsor

bibli
by wo
minis
chive

1935-
histo
ing o
histo
reco
provi
tory.
ments
the n
the p
desig
sourc

more
the h
descr
ernme
inven
clope

Progr
of pu
in th

Direc
been
vey P
the D
Kerr,

FOREWORD

The Inventory of the County Archives of Georgia is one of a number of bibliographies of historical materials prepared throughout the United States by workers on the Historical Records Survey Program of the Work Projects Administration. The publication herewith presented, an inventory of the archives of Echols County, is No. 50 of the Georgia series.

The Historical Records Survey Program was undertaken in the winter of 1935-36 for the purpose of providing useful employment to needy unemployed historians, lawyers, teachers, and research and clerical workers. In carrying out this objective, the project was organized to compile inventories of historical materials, particularly the unpublished government documents and records which are basic in the administration of local government, and which provide invaluable data for students of political, economic, and social history. The archival guide herewith presented is intended to meet the requirements of day-to-day administration by the officials of the county, and also the needs of lawyers, businessmen, and other citizens who require facts from the public records for the proper conduct of their affairs. The volume is so designed that it can be used by the historian in his research in unprinted sources in the same way he uses the library card catalog for printed sources.

The inventories produced by the Historical Records Survey attempt to do more than give merely a list of records - they attempt further to sketch in the historical background of the county or other unit of government, and to describe precisely and in detail the organization and functions of the government agencies whose records they list. The county, town, and other local inventories for the entire county will, when completed, constitute an encyclopedia of local government as well as a bibliography of local archives.

The successful conclusion of the work of the Historical Records Survey Program, even in a single county, would not be possible without the support of public officials, historical and legal specialists, and many other groups in the community. Their cooperation is gratefully acknowledged.

The Survey Program was organized by Luther H. Evans, who served as Director until March 1940, when he was succeeded by Sargent B. Child, who had been National Field Supervisor since the inauguration of the Survey. The Survey Program operates as a Nation-wide series of locally sponsored projects in the Division of Professional and Service Projects, of which Mrs. Florence Kerr, Assistant Commissioner, is in charge.

F. C. HARRINGTON
Commissioner

PREFACE

The Historical Records Survey in Georgia was organized in October 1936, as an independent State unit of the Nation-wide Federal Project No. 1 of the Works Progress Administration, under the supervision of Dr. Luther H. Evans, National Director. The project at the beginning was set up as a part of the Federal Writers' Project, and is indebted to Mrs. Carolyn P. Dillard, State Director of the Project, for its initiation. Miss Annie Laurie Hill was in charge of the Historical Records Survey as Assistant State Supervisor under Mrs. Dillard until November 1936, when the survey was separated from the Writers' Project. Raiford J. Wood was named State Director in November 1936 and served in such capacity until July 1939, at which time Philip Warren was placed in charge of the project. On September 1, 1939, the transfer of the Survey from a Federal project to the status of a State-wide project was effected. Mr. Warren resigned as State Supervisor of the project September 11, 1940, and the present writer was named Assistant State Supervisor in Charge.

The principal objective of the Survey in Georgia is to prepare complete inventories of the public archives of the State and its political subdivisions, and to make readily accessible to research students and historians this large store of source material. Such a survey should greatly aid and encourage a more systematic study of local governmental structure and should point the way to an improvement in the methods of storage and preservation of both current and non-current records.

The arrangement of agencies in Part B of the inventory classifies them according to governmental function: Administration; registration of property titles; administration of justice; law enforcement; finance; elections; education; health; welfare; public works; and miscellaneous. Records are classified, in general, according to the agencies which make them, unless other disposition of the records is directed by law. Under agencies, records have been classified insofar as possible, according to the subjects with which they deal.

Records are described in entries whose style is formalized to give the following information: Title of record, dates for which available, quantity, labeling of volumes or containers, information on missing records or discontinuance, variant titles, manner of arrangement, indexing, and location. These title-line entries differ from full entries used in other County Inventories in that they do not give a description of record contents, nature of recording, or size of volumes or containers.

The Survey is now engaged in preparing a comprehensive statement of the general law regulating county government, to be entitled County Government in Georgia. It is expected that this book will serve as a handbook on the organization, structure, and evolution of county government in Georgia, and will make it unnecessary to repeat certain items of general information in the various inventories. The office essays in this inventory are, therefore, limited to the creation of the office and its present status, the manner in which it is filled, the term, and special legislation affecting Echols County. Pending issuance of the volume on County Government in Georgia, it is suggested that the reader consult the Inventory of the County Archives of Georgia,

Preface

No. 81, Jefferson County, for more detailed essays than those found in the Echols County inventory.

The Inventory of the County Archives of Georgia will, when completed, consist of a separate, numbered volume for each county in the State. Each county unit of the series is numbered according to its respective position in an alphabetical list of Georgia's 159 counties. Thus, the Inventory of Echols County becomes No. 50, in accordance with such list. The inventories of the State archives, of municipal and other local records, will constitute separate publications.

The Survey was begun in Echols County in September 1938, and the initial field work was completed in November of that year. The initial inventory was rechecked in May and June of 1940. For the completeness and accuracy of the inventory of the records, the field workers are responsible. The essays, entries, and other sections of the Inventory were prepared by the State Office staff.

The Georgia staff has profited in all phases of its work by the constructive advice and criticism of the National Office. This inventory in manuscript form was edited by Mabel S. Brodie, assistant archivist in charge of public records inventories, of the Washington, D. C., office.

The publication of this volume is made possible through the assistance rendered on behalf of Echols County by the Commissioners of Roads and Revenues. The valuable assistance rendered by other officials of Echols County is also gratefully acknowledged.

Grateful acknowledgment is also made for the aid given by the various workers and officials of the State and District offices of the Work Projects Administration.

N. Cecil Hill
Assistant State Supervisor in Charge
The Georgia Historical Records Survey

Atlanta, Georgia
September 1940.

TABLE OF CONTENTS

Introduction

	Page
1. Echols County Historical Sketch	1
Maps of Echols County	6
Population of Echols County 1860 to 1940	7
2. Governmental Organization	8
Chart of Echols County Government	10
3. Housing, Care, and Accessibility of the Records	11
Floor Plans of Echols County Courthouse	13
4. Abbreviations, Symbols, and Explanatory Notes	15

Echols County Offices and Their Records

I. Board of Commissioners of Roads and Revenue	18
Minutes. Receipts and Expenditures. Audits.	
II. Superior Court Clerk as Ex Officio County Recorder	18
Real and Personal Property; Deeds and Mortgages; Land Title Registers. Trade Names. Professional Registration.	
III. Superior Court and Clerk	20
Civil; Case Papers and Pleadings; Dockets; Subpoenas; Minutes and Proceedings. Criminal; Case Papers; Dockets; Grand Jury; Subpoenas; Minutes and Proceedings. Voters.	
IV. Solicitor General	22
V. Jury Commissioners	22
VI. Grand Jury	23
VII. Inferior Court	23
VIII. Court of Ordinary and Clerk	24
Minutes. Wills. Estates; Case Papers; Let- ters, Representatives of Estates; Dockets; Bonds, Representatives of Estates; Inventories and Appraisements; Widows Years Support; Sales; Returns. Lunacy. Marriages. Homesteads and Exemptions. Official Bonds. Pensions and Con- federate Records. Spirituous Liquors. Licenses. Vital Statistics. Marks and Brands. Newspapers.	
IX. County Court	27
X. County Court Solicitor	28
XI. Criminal Court	28

Table of Contents

XII.	Justice of the Peace Courts	29
	904th Militia District. 1058th Militia District. 1211th Militia District.	
XIII.	Constables	30
XIV.	County Attorney	30
XV.	Coroner	30
XVI.	Sheriff	31
XVII.	Tax Receiver	31
XVIII.	Board of Tax Assessors	32
XIX.	Tax Collector	32
XX.	Fiscal Depository	33
XXI.	Registrars	33
XXII.	Board of Education	34
XXIII.	Superintendent of Schools	34
	Financial Records. Reports. School Tax.	
XXIV.	Board of Health	35
XXV.	Department of Public Welfare	36
	Cases. Applications. Investigations. Special Assistance. Financial Records.	
XXVI.	Road Commissioners	37
XXVII.	County Surveyor	37
XXVIII.	County Agricultural Agent	38
	Bibliography	40
	Chronological Index	42
	Subject Index	43

1. ECHOLS COUNTY HISTORICAL SKETCH

Creation and Boundaries

Echols County was created on December 13, 1858, by an act of the General Assembly of Georgia, (1) the one hundred and thirtieth county to be laid out in the State. (2) The new county was formed from territory formerly embraced in Lowndes and Clinch Counties, and was named in honor of Robert M. Echols, of Walton County, who was at one time President of the State Senate and a colonel of the Georgia Regiment during the Mexican War. (3) The original boundary of the county began at a point on the Georgia-Florida line directly south of the confluence of Suwanoochee Creek and the Suwannee River, up the Suwanoochee to Jack's Ford, then on a direct line to Griffin's mills on Cow Creek, along that creek to the Alapaha River, from there on a direct line to Carter's Ford on Grand Bay Creek, along this creek to its junction with "Mud Swamp" (Mud Creek), from that point due south to the Florida line, and along this line to the commencing point. (4) Since the creation of Echols County, the line with Lowndes County has been changed on three occasions, adding three lots of land and parts of two others to Lowndes. (5) The present area of Echols is 362 square miles, or 231,680 acres. (6)

Physical Characteristics

Echols County is centrally located in the extreme southern part of Georgia on the Florida line. Except for its southern boundary, it is irregular in outline, the greatest length being from east to west. The county is bounded generally on the north by Lanier and Clinch Counties, on the east by Clinch, on the south by the State of Florida, and on the west by Lowndes County. The land of Echols County is flat and the soil is sandy. The county is better adapted to the growing of tobacco and to the producing of naval stores than to any other agricultural and industrial operations. (7) None of the rivers of the county is very large. The Suwannee River flows through the swampy southeastern corner of the county, and into this famous river flows all of the drainage of the county. The Alapaha River flows from north to south through the western section of the county, eventually emptying into the Suwannee River into Florida. Grand Bay Creek is a tributary of the Alapaha. Toms Creek and Suwanoochee Creek, the latter forming the northern and eastern boundary of the county, both flow in a southeasterly direction and empty into the Suwannee River. (8)

-
- 1) Ga. Acts 1858, pp. 37-40.
 - 2) Ga. Code of 1933, #23-101.
 - 3) Adiel Sherwood, A Gazetteer of Georgia..., Fourth Edition (Macon, Griffin, and Atlanta, Georgia, 1860), 62.
 - 4) Ga. Acts 1858, p. 38.
 - 5) Ga. Acts 1860, p. 141; 1866, p. 34; 1877, p. 276.
 - 6) Rand McNally Commercial Atlas..., Seventy-first Edition (Chicago, New York, San Francisco, c. 1940), 105.
 - 7) Information from the United States Geological Survey, Georgia School of Technology, Atlanta, Georgia.
 - 8) United States Geological Survey, (Map of) State of Georgia, A. F. Hassan, cartographer (compiled in 1932).

County Site and County Buildings

The act creating the county attached Echols to the Brunswick Judicial Circuit, the First Congressional District, and the second brigade of the Sixth Division of Georgia Militia. Harris Tomlinson, Guilford Register, and William B. Cruise were appointed commissioners to purchase a tract of land and lay out a county seat at the expense of the new county. The inferior court was empowered to do this work if it had not been completed by the commissioners at the time the members of the court had been elected and qualified. Persons entitled to vote were to meet on the first Monday in April 1858 "at Troublesome and the several precincts now established within said new county," and to elect county officers.(1) The election was accordingly held and the first officers of Echols County were commissioned by the Governor of the State on April 15. Jesse P. Prescott was elected clerk of the superior and inferior courts; James S. Carter, sheriff; James P. Y. Higdon, ordinary; John E. McMullin, tax receiver; Samuel E. Prescott, tax collector; James Carter, treasurer; Duncan McLeod, surveyor; John Sellars, coroner; and Noah H. Griffin, Robert Prine, John P. Allen, James R. Miller, and Joshua T. Carter, justices of the inferior court.(2)

A year after the creation of Echols County, Statenville, the county seat, was incorporated by the General Assembly.(3) The town was named for Captain James W. Staten, the first representative in the Georgia legislature from Clinch County.(4) Statenville was a small settlement and post office on the east bank of the Alapaha River, previously known as Troublesome.(5) The county site extended one-half mile from the courthouse in every direction. Jesse P. Prescott, John T. Allen, R. W. McAlhaney, Benjamin Stalsvey, and James S. Carter were appointed the first commissioners of the new county seat.(6)

There is practically no extant information relating to the early courthouse or courthouses of Echols County. Since the act incorporating the county seat mentions "the Court House," it is likely that a county building was erected within a year after the creation of the county. Whether or not this first courthouse was the only one erected between 1858, the date of the creation of the county, and 1897 is not known. However, on the afternoon of December 31, 1897, the Echols County courthouse was destroyed by fire.(7) Apparently most of the county records prior to 1898 were destroyed.(8)

-
- 1) Ga. Acts 1858, p. 38.
 - 2) Folks Huxford, History of Clinch County, Georgia... (Macon, Georgia, 1916), 42.
 - 3) The town is incorrectly named Statesville in the printed and engrossed act of incorporation. This error has not been corrected by a subsequent statute. However, by common consent the town is known officially as Statenville. An act passed in 1877 relating to the sale of liquors correctly calls the town Statenville.--Ga. Acts 1859, pp. 200-202; 1877, p. 188.
 - 4) Huxford, op. cit., 42.
 - 5) Sherwood, op. cit., 61.
 - 6) Ga. Acts 1859, p. 201.
 - 7) Minutes, Commissioners Roads and Revenues, vol. 1, 1898-1923, p. 1, see entry 1.
 - 8) For those records antedating 1898, see entries 6, 9, 24, 66.

In March 1898 the grand jury of the county recommended that the question of a new courthouse be dropped for the year,(1) but in September of that year another grand jury recommended that the county commissioners take steps to rebuild the courthouse as soon as they were able to raise the necessary funds.(2) In the meantime the grand jury used the Masonic Lodge Hall for its meetings and court was held in a church. In April 1898 the county commissioners ordered that a storehouse owned by T. C. Ham be rented at \$1.50 a month for use as a temporary courthouse.(3) Acting in pursuance of the recommendation of the September grand jury, the county commissioners ordered that 25 cents on the \$100 be levied for building a courthouse.(4)

Finally, after calling for plans and specifications, the commissioners let the contract for the present courthouse to L. W. Mattox in June 1899. (5) The cornerstone was laid with Masonic honors, and on September 15, 1899, the county accepted the two-story wood courthouse from the contractor.(6) In spite of the new building, Echols County still had no safe place to keep its records. In 1908 a grand jury recommended that the board of commissioners "make some arrangements to establish a perfect device, or some safe place for keeping and maintaining the official books of our County Offices."(7) Since then a vault has been added to the present building.(8)

Early in 1900 the board of commissioners let a contract to L. W. Mattox for a jail which was completed in May of that year.(9) Eight years later the board decided to build a new jail, and on May 9, 1908, awarded the contract to the Southern Steel Company, of San Antonio, Texas.(10)

Population and Growth

A year after the creation of Echols County the total population was less than fifteen hundred persons. Of this number about 20 percent were Negro slaves,(11) a small number as compared with the cotton belt counties of Georgia. In 1860 there were 121 farms in the county, nearly all of

-
- 1) Minute Book (Civil and Criminal), vol. A, 1898-1914, p. 13, see entry 22.
 - 2) Ibid., 37.
 - 3) Minutes, Commissioners Roads and Revenues, vol. 1, 1898-1923, p. 5, see entry 1.
 - 4) Ibid., 11.
 - 5) Ibid., 21.
 - 6) Ibid., 23, 29.
 - 7) Minute Book (Civil and Criminal), vol. A, 1898-1914, p. 375, see entry 22.
 - 8) For a description of the present courthouse and vault, see Housing, Care, and Accessibility of the Records, infra, p. 11.
 - 9) Minutes, Commissioners Roads and Revenues, vol. 1, 1898-1923, pp. 35, 38, see entry 1.
 - 10) Ibid., 145, 149, 150.
 - 11) See Population of Echols County 1860-1940, infra, p. 7.

which were less than 100 acres in size.(1) These farms produced comparatively little cotton, but considerable quantities of subsistence crops such as corn, sweet potatoes, and sugar cane.(2) The small number and the small size of the farms in Echols County prior to the Civil War is further indicated by the labor supply of Negro slaves. There were only 49 slaveholders in the county, owning a total of 314 slaves. A third of these slaveholders owned only one Negro each; thirty owned less than five; and only nine owned ten or more.(3)

After the Civil War the true value of real and personal property in Echols County was placed at \$350,000.(4) The improved and unimproved acreage in the county increased somewhat in the decade from 1860 to 1870, but the cash value of farms showed a decrease of more than one-half.(5) Soon after the Civil War the county began to produce naval stores. By 1890 the number of persons in the county was more than twice the number at the time of its creation. The greatest increase was among the Negro population.(6) This increase was doubtless due to the development of the naval stores industry.

The economy of Echols County has always been rural and principally agricultural. In 1935 there were 250 farms in the county, of which 7 were operated by Negroes. More than 30 percent of the land area of the county was laid out in farms, the average size of which was approximately 281 acres. The farms of the county, including buildings, were valued in 1935 at \$520,276, and the average value of farm land stood at \$7.41 an acre. Approximately 18 percent of the farm land is available for crops, and 82 percent is in pasture or woodland. More than 60 percent of the farms of the county are fully owned by the operators.(7)

Echols County produces comparatively little cotton, only 110 bales having been grown in 1934. Considerable amounts of corn, sugar cane, Irish potatoes, and sweet potatoes are raised. In 1934 the county produced 106,253 pounds of tobacco. In recent years the livestock in the county has increased, especially cattle.(8)

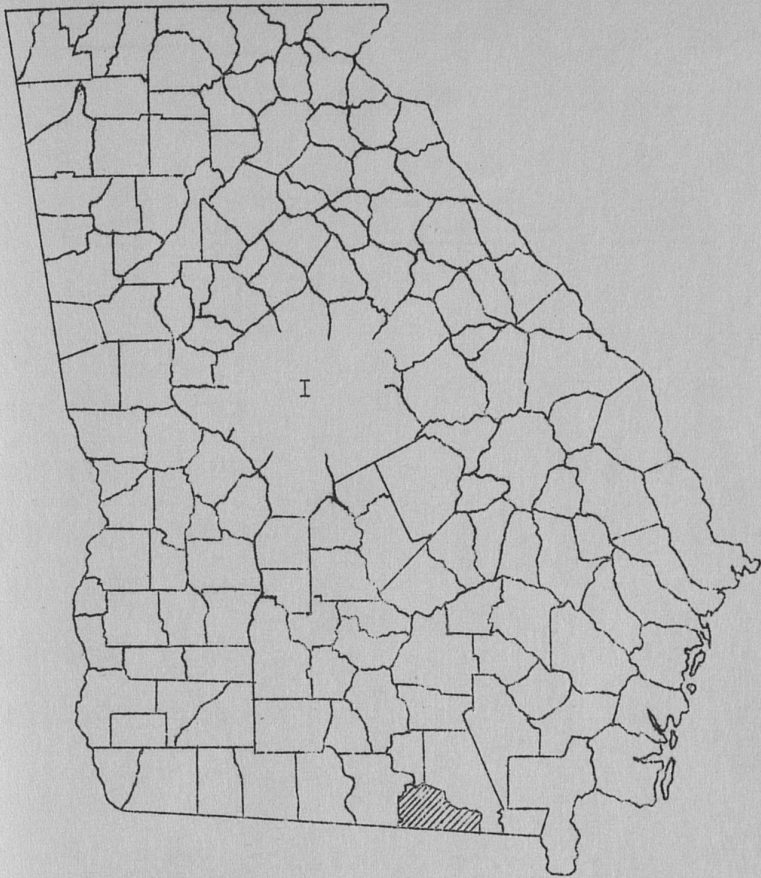
The development of the naval stores industry has taken place in Echols County almost entirely since the Civil War. The production of naval stores in Georgia reached its height around 1890.(9) The development and decline of this industry largely accounts for the increase and subsequent decrease

-
- 1) Eighth Census of the United States, 1860, Agriculture of the United States, 196.
 - 2) Ibid., 22-25.
 - 3) Ibid., 226.
 - 4) Ninth Census of the United States, 1870, III, The Statistics of the Wealth and Industry of the United States, 22.
 - 5) Ibid., 120.
 - 6) See Population of Echols County 1860-1940, infra, p. 7.
 - 7) U. S. Department of Commerce, Bureau of the Census, United States Census of Agriculture: 1935 (Washington, 1936), I, 498.
 - 8) Ibid., 515, 523.
 - 9) Gamble's International Naval Stores Year Book for 1930-31 (n.p., n.d.), 65.

of the population of the county. At present between 80 and 90 percent of the owners of trees from which rosin and turpentine are made are cooperating with the Naval Stores Conservation program of the Federal Government, with a total of 1,419,000 "faces" or cups in the county.(1)

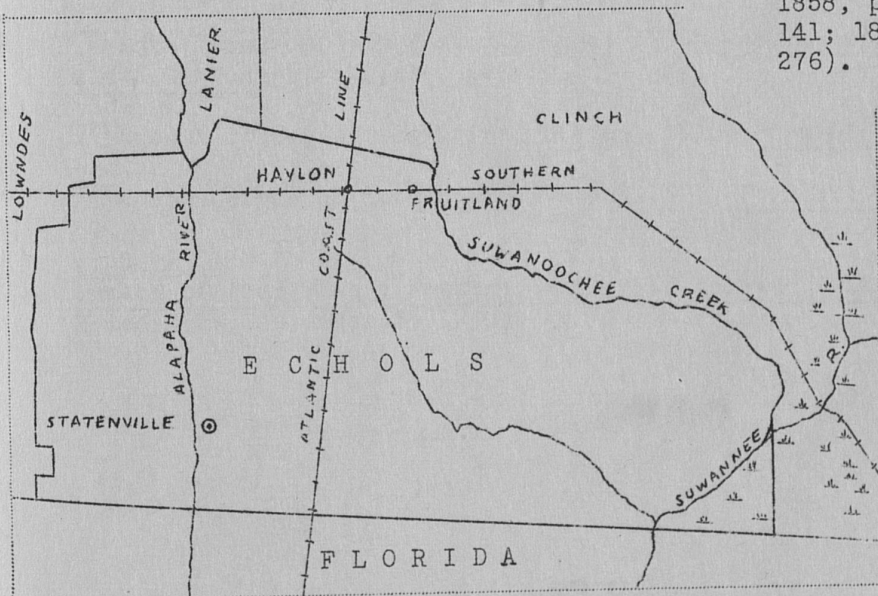
Between the years 1890 and 1920, the population of Echols County remained almost static. In the decade from 1920 to 1930 the population showed a decrease of nearly 14 percent. Preliminary reports show an increase of eight percent between the years 1930 and 1940.(2) Today the county is the smallest county in Georgia in population, the only county in the State with less than three thousand inhabitants.

1) Information from the United States Forest Service, Atlanta, July, 1940.
2) See Population of Echols County 1860-1940, infra, p. 7.



I
 Current map of Georgia showing location of Echols County (shaded) therein.

The boundaries of Echols County have been changed several times by the General Assembly, but the changes were not great enough to indicate on a map of this size (Ga. Acts 1858, pp. 37-40; 1860, p. 141; 1866, p. 34; 1877, p. 276).



Current map of Echols County

POPULATION OF ECHOLS COUNTY 1860-1940

	<u>Year</u>	<u>Whites</u>	<u>Free Persons of Color</u>	<u>Colored</u>	<u>Slaves</u>	<u>Totals</u>
1)	1860	1177	0		314	1491
2)	1870	1513		465		1978
3)	1880	2053		500		2553
4)	1890	2059		1020		3079
5)	1900	2218		991		3209
6)	1910	2319		990		3309
7)	1920	2267		1046		3313
8)	1930	1899		845		2744
9)	1940					2964

-
- 1) Ninth Census of the United States, 1870, I, Statistics of the Population, 20-22.
 - 2) Ibid.
 - 3) Eleventh Census of the United States, 1890, Report on Population of the United States, Part I, 14, 406.
 - 4) Ibid.
 - 5) Thirteenth Census of the United States, 1910, Population, II, 380.
 - 6) Ibid.
 - 7) Fifteenth Census of the United States, 1930, Population, III, Part I, 482.
 - 8) Ibid.
 - 9) Summary of Preliminary Population Figures for the State of Georgia: 1940 (Release of September 3, 1940).

2. GOVERNMENTAL ORGANIZATION

The Georgia county is a civil division of the State for judicial and political purposes; a local organization invested with certain functions of corporate existence.(1) The county serves as agent of the State in the collection of taxes and cooperates in the promotion of public health, education, welfare, and the enforcement of law.

Counties were created by amendments to the constitution which, until the year 1904, were limited in number to the 145 then existing.(2) Since that date 16 additional counties have been created, aggregating 161, but the merger in 1932 of Campbell and Milton Counties with Fulton reduced the number of counties to 159, the present number.(3) There are no limitations or restrictions as to size, population, or taxable values in the creation of counties.

One hundred and twenty-nine counties had been formed prior to December 13, 1858, the date Echols County was created.(4) The county was attached to the Brunswick Judicial Circuit, the First Congressional District, and the Second brigade of the Sixth division of Georgia Militia.(5)

The inferior court was vested with complete authority over county affairs for the first 10 years of Echols' existence as a county.(6) Upon the abolition of the inferior court in 1868, this jurisdiction was placed in the ordinary,(7) and in 1873 vested in a board of commissioners of roads and revenue.(8) County affairs were again in 1885 placed under control of the ordinary,(9) who retained this authority until the reestablishment of the commissioners in 1893.(10)

Functioning in Echols County at the present time are the following courts, officers, and agencies: A board of three commissioners of roads and revenue, in charge of the administration of the business and affairs of the county;(11) the superior court, the highest State court of original jurisdiction, with exclusive jurisdiction of land title, divorce and equity causes, and all crimes amounting to felonies;(12) the clerk of this court, in addition to his duties as a clerical officer, is ex officio county recorder, and is responsible for the recordation of titles to property, liens, and the like;(13) the solicitor general, State prosecuting attorney for the judicial circuit embracing Echols County;(14) jury commissioners, appointed

-
- 1) Hammond v. Clark, 71 S.E. 479; 136 Ga. 313 (1911).
 - 2) Ga. Code of 1933, #2-8201.
 - 3) Ga. Acts 1929, p. 551; 1931, p. 527.
 - 4) Ga. Acts 1858, pp. 37-40.
 - 5) Ibid., p. 38.
 - 6) Ga. Const. 1789, art. III, sec. I.
 - 7) Ga. Const. 1868, art. V, secs. V, XV.
 - 8) Ga. Acts 1873, p. 231.
 - 9) Ga. Acts 1884-85, p. 438.
 - 10) Ga. Acts 1893, p. 360.
 - 11) Ibid.
 - 12) Ga. Const. 1777, arts. XXXVI-XL; Ga. Code of 1933, #2-3201.
 - 13) Ga. Const. 1777, art. XL; Ga. Code of 1933, #24-2714.
 - 14) Ga. Const. 1798, art. III, sec. III.

by the judge of superior court to revise the lists of grand and trial jurors;(1) the grand jury, charged with the duty of investigating county affairs, inspecting county institutions, and indictment of offenders against the laws of the State;(2) court of ordinary and clerk, vested with jurisdiction over probate and estate matters;(3) county court, for the trial of civil cases involving not more than \$500 and criminal causes of misdemeanor grade;(4) five justices of the peace courts, with jurisdiction in civil cases involving not more than \$100 and criminal powers of a court of inquiry;(5) constables, the executive officers of the justice courts;(6) county attorney, representing the county in a legal advisory capacity and in any litigation in which the county becomes involved;(7) county coroner, who officiates at inquiries into all sudden or mysterious deaths where there are no eye-witnesses;(8) sheriff, chief law enforcement officer of the county;(9) the tax receiver, who gathers returns of taxable property;(10) board of tax assessors, charged with the duty of equalizing the property taxes of citizens;(11) the tax collector, who collects both State and county taxes;(12) fiscal depository, in lieu of abolished office of county treasurer;(13) registrars, who compile the lists of registered voters;(14) public school system (board of education);(15) county superintendent of schools;(16) county department of health;(17) county department of public welfare;(18) road commissioners;(19) county surveyor;(20) county agricultural agent.(21)

-
- 1) Ga. Acts 1869, pp. 139, 143; 1878-79, p. 27.
 - 2) Ga. Const. 1777, art. XLV; Ga. Code of 1933, #59-309.
 - 3) Ga. Code of 1933, #24-1701; Ga. Acts 1851-52, pp. 49, 50, 91.
 - 4) Ga. Acts 1871-72, pp. 288-298; 1878-79, pp. 132-136.
 - 5) Ga. Const. 1777, art. LIII; Ga. Code of 1933, #24-1001.
 - 6) Ga. Code of 1933, #24-801.
 - 7) Ga. Acts 1933, p. 529; Minutes, Commissioners Roads and Revenues, vol. I, 1898-1923, p. 200, see entry 1.
 - 8) Ga. Acts 1858, pp. 37-40; Ga. Code of 1933, #21-202.
 - 9) Ga. Const. 1798, art. III, sec. XI; Ga. Acts 1858, p. 38.
 - 10) Ga. Code of 1933, #92-4611.
 - 11) Ga. Acts 1913, pp. 123-134.
 - 12) Act 1804, Cobb, p. 1046.
 - 13) Ga. Acts 1915, pp. 215-218.
 - 14) Ga. Code of 1933, #34-301.
 - 15) Ga. Code of 1933, #32-902.
 - 16) Ga. Code of 1933, #32-1001; Ga. Acts 1911, p. 101.
 - 17) Ga. Code of 1933, #88-201.
 - 18) Ga. Acts 1937, pp. 363, 364.
 - 19) Ga. Code of 1933, #95-301, #95-302.
 - 20) Ga. Code of 1933, #23-1101.
 - 21) Ga. Acts 1914, p. 1243; 1923, p. 88; Barnes Federal Code, #8413, #8414.

3. HOUSING, CARE, AND ACCESSIBILITY OF THE RECORDS

The present Echols County courthouse was erected by L. W. Mattox in 1899 and accepted from the contractor by the commissioners of roads and revenue on September 15, 1899.(1) It is a two-story frame structure, 51 feet long and 38 feet wide, painted white and with a fireproof concrete vault extending out from its south wall.

This vault houses the records of the superior court clerk, the ordinary, the commissioners of roads and revenue, the tax receiver and the tax collector. The records of other county agencies are housed in their respective offices, unless otherwise noted in the description of the individual offices, and are subject to a fire hazard.

The front of the building faces west, and a central hall, 51 feet long, 8 feet wide and 12 feet high, extends from the front to the rear of the structure. Inside the main entrance, a stairway to the left as one enters the building leads to the second floor. This stairway is 5 feet wide.

Rooms on the south side of the building, from front to rear, are the office of the superior court clerk, the office of the ordinary, and the office of the board of education. The vault extends out from the south wall and is divided by the partition separating the offices of the superior court clerk and the ordinary. It can be entered from either of these offices. Rooms on the north side of the building, from front to rear, are the department of public welfare office, the sheriff's office, and the county judge's office.

The stairway leads into the courtroom on the second floor, this large room occupying most of the second floor. At the rear of the courtroom, from north to south, are a witness room, the judge's chambers, and a jury room.

The courtroom is 38 feet and 6 inches deep and extends the width of the building, 38 feet. It has four windows on the front and a central door leading out into a small balcony. There are four windows on the north wall, and five windows in the south wall. The judge's bench is against the east wall. The ceiling is 12 feet above the floor. The rooms at the rear of the judge's bench are all 10 feet deep. The witness room and the jury room are each 12 feet and 6 inches wide, and the central judge's chambers, directly behind the bench, is 10 feet wide. The witness room and jury room are entered from the courtroom, and the judge's chambers are entered from the witness room. All these rooms have ceilings 12 feet above the floor.

County records are located as follows:

Superior Court Clerk's and Ordinary's Vault: This fireproof vault, 12' x 8' x 10', houses 21 volumes and 12 bundles of records of the commissioners of roads and revenue; 54 volumes, three file drawers, 1,200 documents in nine bundles, and one file box of records of the superior court

1) Minutes, Commissioners Roads and Revenues, vol. 1, 1898-1923, p. 21, see entry 1.

clerk; three volumes of the grand jury records and presentments; 24 volumes and 10 file boxes of records of the ordinary; 28 volumes and two file drawers of records of the tax receiver; 45 volumes of the tax collector.

Ordinary's Office: This room, 16' x 13'6" x 12', houses 1,550 newspapers of the ordinary in four file boxes; one volume of the 904th militia district justice of the peace records; one volume of the 1211th militia district justice of the peace records.

County Court Judge's Office: This room, 16' x 13'6" x 12', houses seven volumes of records of the county court.

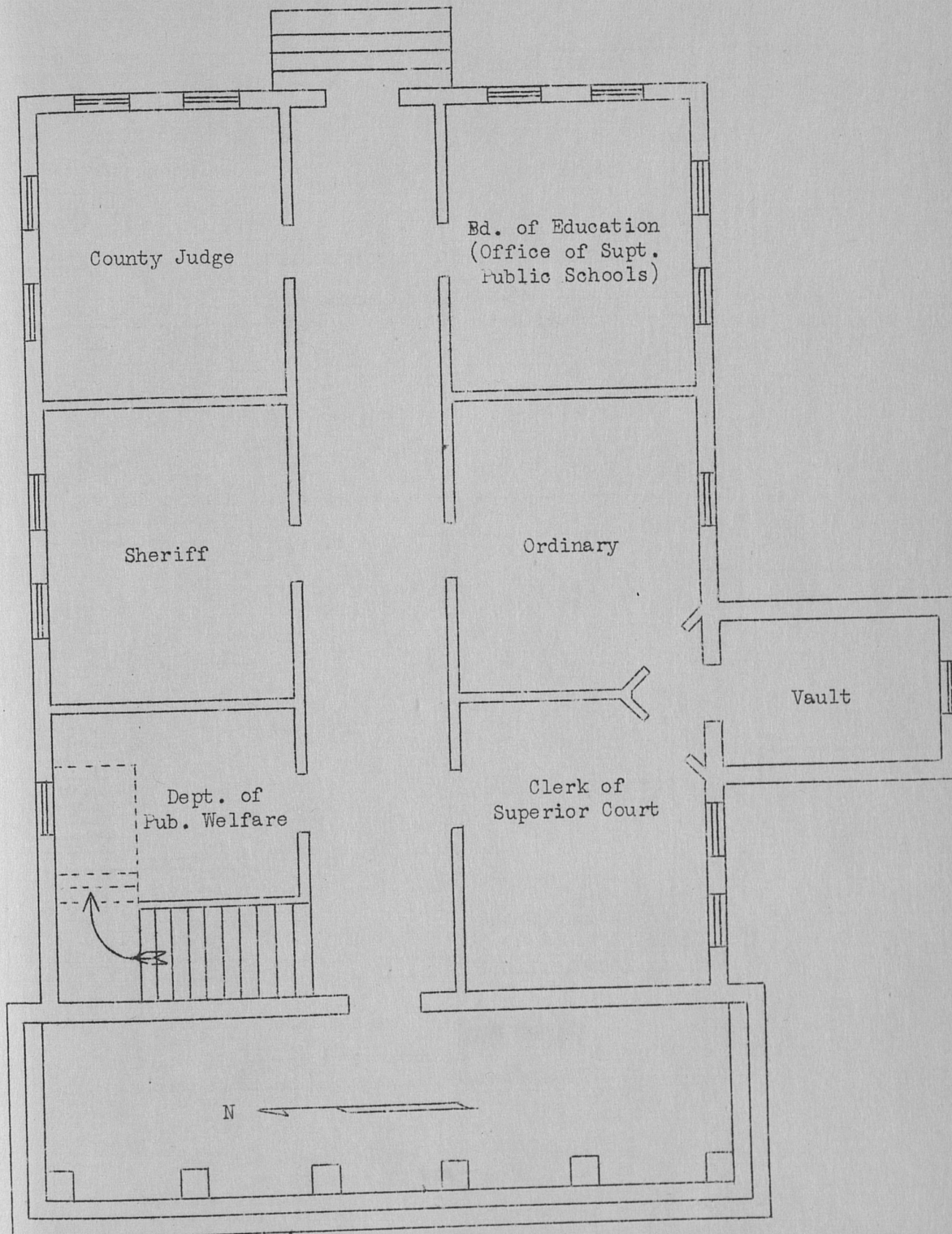
Sheriff's Office: This room, 16' x 13'6" x 12', houses four volumes of the sheriff's records; three volumes of the 1058th militia district justice of the peace records.

Tax Collector's Home: Kept here are three volumes of records of the tax collector.

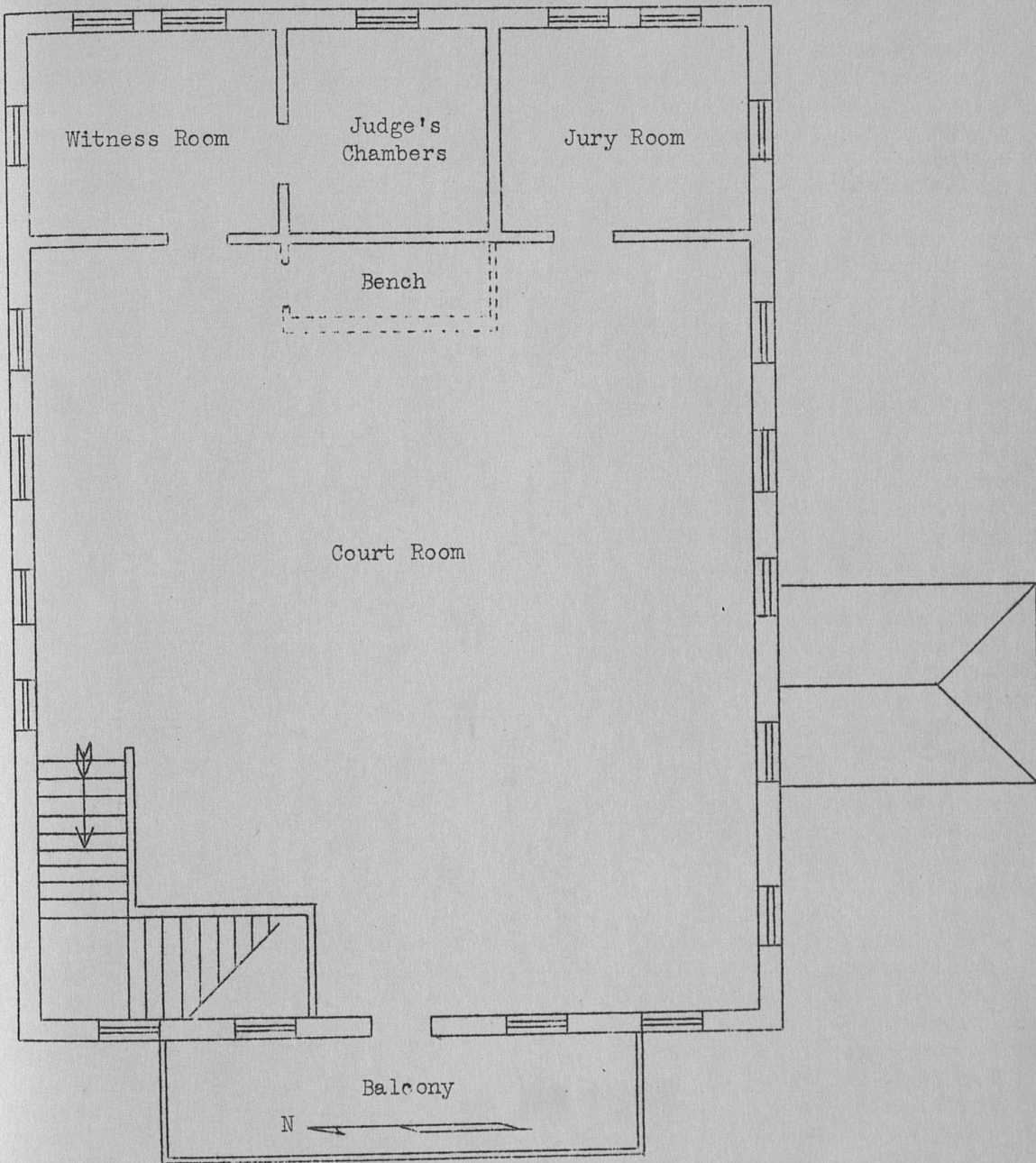
Office of the Superintendent of Education: This room, 16' x 13'6" x 12', houses 197 volumes, nine bundles of documents and three desk drawers of papers of the superintendent's records; three volumes of the records of the board of education.

Department of Public Welfare Office: This room, 10'6" x 13'6" x 12', houses eight volumes, one file drawer, three file boxes and one folder of records of the department of public welfare, 112 volumes of the tax collector's records.

County Agricultural Agent's Office: This room, located in a small building near the courthouse, houses four volumes, five file drawers, two file boxes of records and four bundles of maps of the county agent.



Echols County Courthouse, Statenville, Georgia
First Floor, Scale 1" = 8'



Echols County Courthouse, Statenville, Georgia
Second Floor, Scale 1" = 8'

4. ABBREVIATIONS, SYMBOLS, AND EXPLANATORY NOTES

Abbreviations

alph.	alphabetical(ly)
arr.	arranged, arrangement
art.	article
aver.	average
bdle(s).	bundle(s)
chron.	chronological(ly)
cl.	clerk
comm.	commissioner
Const.	Constitution
co.	county
C.C.	County Courthouse
ct(s).	court(s)
dept.	department
D.P.W.	Department Public Welfare
est.	estimated
f.b.	file boxes
f.d.	file drawers
fl.	floor
gen.	general
Ga.	Georgia, Georgia Reports
hdw.	handwritten
ibid.	<u>ibidem</u> , (in the same place)
indef.	indefinite
J.P.	Justice of the Peace
M.D.	Militia District
no(s).	number(s)
numer.	numerical(ly)
off.	office
<u>op. cit.</u>	<u>opere citato</u> (in the work cited)
ord.	ordinary
P., PP.	page(s)
par.	paragraph
pr.	printed
pr. fm(s).	printed form(s)
pr. hd(s).	printed head(s)
rm(s).	room(s)
sec.	section
supt.	superintendent
sup. ct. cl.	superior court clerk
tax rec.	tax receiver
treas.	treasurer
va.	vault
vol(s).	volume(s)

Symbols

--	current
'	foot, feet

" inches
space marks are used in footnote citations preceding sections of
the Georgia Code, as a symbol for Section.

Explanatory Notes

The exact titles of records, as they appear on the spine or outside of volumes and record containers, are written in solid capitals without parentheses. In the absence of titles, descriptive titles have been assigned, which are written in solid capitals and enclosed in parentheses. If a record title is not adequately descriptive of the contents of the record, an assigned explanatory title, written with initial capitals and enclosed in parentheses, has been added to the exact title. If in a single series the title of a record varies, the current or most recent title is used as the entry title, but variations are shown in the title lines, as well as volumes that have no title.

Figures or letters in parentheses, immediately following the number of volumes or file drawers, indicate the labeling of a record.

Where no statement is made that the record was discontinued at the last date shown in the entry, it could not be definitely established that such was the case. Where no comment is made on the absence of prior or subsequent records, no definite information could be ascertained.

Title-line cross references are used to complete a series where the record is kept separately for a period of time, and in other records for different periods of time. They are also used in all artificial entries for the purpose of showing, under their proper office, records kept in the same volume or file with unrelated records of a different office; and in cases where a distinct record has never been kept separately, but has been carried in two or more separate sets of records covering different periods of time. In both instances, the master entry carries a body-of-entry cross reference back to the artificial entry, or the entry completing the series, showing its title and entry number. No dates are shown in a body-of-entry cross reference unless the dates of the record covered by the cross reference vary from those of the master entry in which it appears. See entries 20 and 33.

Separate third-paragraph cross references from entry to entry, and "see also" cross references, are used to guide the reader to prior, subsequent, or related records which are not a part of the same series.

Unless the index is self-contained, an entry for the separate index immediately follows its record entry where possible. Cross references are given in an entry for a separate index to the record entry or entries it serves; and conversely, cross references are given in a record entry to the separate index serving it, or entries where there are more than one separate index.

All records are located in the county courthouse, unless otherwise indicated.

Unless otherwise specified, it is to be assumed that the records are in good condition.

Most of the citations shown in the footnotes are in abbreviated form. The full title of these references may be found in the bibliography on pages 40 and 41.

I. BOARD OF COMMISSIONERS OF ROADS AND REVENUES

A board of commissioners of roads and revenues was established in Echols County in 1873,(1) succeeding to the jurisdiction over county affairs exercised by the inferior court from the county's creation in 1858,(2) until 1868, and by the ordinary from 1868(3) until 1873. The board subsequently acquired numerous other functions, powers, and duties. The board of commissioners was abolished in 1885, at which time the ordinary was again placed in charge of county affairs,(4) but it was reestablished in 1893,(5) and has continued to function to the present. The board consists of three members who are elected by the qualified voters of the county, and who hold office for 2 years.(6) The board is authorized to employ a clerk who serves at its pleasure.(7) The commissioners, in addition to jurisdiction over county affairs, and other powers and duties, control all county property.(8)

All records of the board of commissioners of roads and revenues are located in the superior court clerk's and ordinary's vault.

Minutes

1. MINUTES, COMMISSIONERS ROADS AND REVENUES, 1898--. 2 vols. (1, 2). Arr. chron. by date of meeting. No index.

Receipts and Expenditures

2. RECORD OF COUNTY ORDERS (to Pay Obligations), 1898--. 3 vols. (1-3). Arr. chron. by date warrant issued. No index.
3. LEDGER (Cash Book), 1903--. 2 vols. Arr. chron. by date of check or deposit. No index.
4. (COUNTY VOUCHERS), 1933--. Est. 1,000 vouchers in 12 bdles. Arr. chron. by date of voucher. No index.

Audits

5. (COUNTY AUDITS), 1925, 1928-30, 1933--. 14 vols. Arr. numer. by schedule no. and alph. by first letter of exhibit schedule thereunder. No index.

II. SUPERIOR COURT CLERK AS EX OFFICIO COUNTY RECORDER

The superior court clerk is the principal recording officer of Echols

-
- 1) Ga. Acts 1873, p. 231.
 - 2) Ga. Acts 1858, p. 37.
 - 3) Ga. Const. 1868, art. V, secs. V, XIV.
 - 4) Ga. Acts 1884-85, p. 438.
 - 5) Ga. Acts 1893, p. 360.
 - 6) Ibid.
 - 7) Ga. Acts 1933, p. 529.
 - 8) Ga. Acts 1893, p. 360.

County, although some important instruments are recorded and registers are kept by the ordinary and other county officials.(1) The records immediately following this essay have been separated arbitrarily from those kept by the clerk in his capacity as a court officer. The manner of his selection, term of office, and similar subjects are treated in the next following essay, "Superior Court and Clerk."

All records of the superior court clerk as recorder are located in the superior court clerk's and ordinary's vault.

Real and Personal Property

Deeds and Mortgages

6. DEED (and Realty Mortgage) RECORD, 1867-Aug. 1877, Feb. 1887-Mar. 1891, Nov. 1896--. 18 vols. (1867-96, 2 vols., dated; K-Z).
Arr. chron. by date recorded. 1867-1916, 15 vols., indexed alph. by first letter of grantor's surname and chron. thereunder; for index 1917--, see entries 7 and 8.
7. FILING DOCKET AND GENERAL INDEX TO REALTY DEEDS AND MORTGAGES (Grantor), 1917--. 2 vols. (labeled by contained letters of alph.).
Serves as index to Deed (and Realty Mortgage) Record, entry 6; Mortgage Record (Chattel), entry 9. Arr. alph. by name of grantor.
8. FILING DOCKET AND GENERAL INDEX TO REALTY DEEDS AND MORTGAGES (Grantee), 1917--. 2 vols. (labeled by contained letters of alph.).
Serves as index to Deed (and Realty Mortgage) Record, entry 6; Mortgage Record (Chattel), entry 8. Arr. alph. by name of grantee.
9. MORTGAGE RECORD (Chattel), 1897--. 8 vols. (B-I).
Arr. chron. by date recorded. 1897-1916, 4 vols., indexed alph. by first letter of mortgagee's surname and chron. thereunder; for index 1917--, see entries 7 and 8.

Land Title Registers

10. REGISTER OF DECREE OF TITLE, 1919--. 1 vol.
Arr. chron. by date registered. No index.
11. TITLE REGISTER, 1919--. 3 vols. (1, 2; 1 vol. not labeled).
Last entry 1953.
Arr. numer. by registration no. Indexed alph. by first letter of owner's surname and chron. thereunder.
12. WILD LAND DIGEST, 1898-1901. 4 vols. (dated).
Digest of land in a state of nature, as distinguished from improved or cultivated land, showing name and address of owner, number of acres, location of tract, value of land, and amount of tax assessed. Arr. numer. by district no. and alph. by first letter of owner's surname thereunder. No index.

1) Ga. Code of 1933, #24-2714, #24-2715, #24-2726, #24-1804, #92-4901, #92-4902.

Trade Names

13. TRADE NAME AFFIDAVITS, 1930--. Est. 65 papers in 1 f.d.
Arr. chron. by date of affidavit. For index, see entry 14.

14. INDEX TO TRADE NAMES, 1930--. 1 vol.
Serves as index to Trade Name Affidavits, entry 13. Arr. alph. by first letter of trade name and chron. thereunder.

Professional Registration

15. PHYSICIANS' REGISTER, 1908--. 1 vol. Last entry 1935.
Arr. chron. by date of registration. Indexed alph. by first letter of physician's surname and chron. thereunder.

III. SUPERIOR COURT AND CLERK

Echols County, upon its creation in 1858, was placed in the Brunswick judicial circuit and provided with a superior court clerk.(1) It was attached in 1873 to the Southern circuit,(2) in which it remains to the present. This circuit also includes Brooks, Colquitt, Lowndes, and Thomas Counties.(3) One judge serves this circuit and he is elected by the qualified voters of the State(4) for a term of 4 years.(5) There is one superior court clerk in each county of the circuit, and the Echols superior court clerk is elected by the qualified voters of the county(6) and serves for a term of 4 years.(7) The superior court is the highest State tribunal of original jurisdiction,(8) and has exclusive jurisdiction over divorce, equity, and land title cases, and felony criminal cases.(9) It has concurrent jurisdiction over all other cases except probate and estate matters, original jurisdiction of which is vested in the ordinary.(10) Numerous other powers and duties also are vested in this court and its officers.

All records of the superior court clerk are located in the superior court clerk's and ordinary's vault.

Civil

Case Papers and Pleadings

16. (CASE PAPERS - CIVIL AND CRIMINAL), 1900--. Est. 1,200 papers in 9 bdles. and 1 f.b.
Arr. chron. by court term. No index.

-
- 1) Ga. Acts 1858, pp. 37-40.
 - 2) Ga. Acts 1873, p. 58.
 - 3) Ga. Acts 1939, p. 1469.
 - 4) Ga. Code of 1933, #2-3101, #2-3102.
 - 5) Ga. Code of 1933, #2-3101.
 - 6) Ga. Code of 1933, #2-8301.
 - 7) Ibid.
 - 8) Ga. Code of 1933, #2-3201, #24-2615.
 - 9) Ga. Code of 1933, #2-3201.
 - 10) Ga. Code of 1933, #24-2615.

Dockets

17. CIVIL ISSUE DOCKET, 1898--. 1 vol.
Arr. chron. by court term. Indexed alph. by first letter of plaintiff's surname and chron. thereunder.
18. CLERK'S EXECUTION DOCKET, 1898-1921. 1 vol. 1921-- in General Execution Docket, entry 20.
Docket of executions issued on superior court judgments. Arr. chron. by date of execution. No index.
19. ATTACHMENT DOCKET, 1902--. 1 vol.
Arr. chron. by date of levy. Indexed alph. by first letter of plaintiff's surname and chron. thereunder.
20. GENERAL EXECUTION DOCKET, 1898--. 2 vols. (1 vol. dated; 2).
Docket of executions issued on judgments from all courts. Also contains: Clerk's Execution Docket, 1921--, entry 18. Arr. alph. by first letter of defendant's surname and chron. thereunder. No index.

Subpoenas

21. CIVIL SUBPOENAS (Stubs), 1899-Mar. 1903, Sept. 1915--. 2 vols. (1; 1 vol. not labeled).
Arr. numer. by subpoena no. No index.

Minutes and Proceedings

22. MINUTE BOOK (Civil and Criminal), 1898--. 3 vols. (A-C).
Arr. chron. by court term. 1898-1914, 1926--, no index; 1914-27, indexed alph. by first letter of defendant's surname and chron. thereunder.

Criminal

Case Papers

23. EVIDENCE FROM CORONERS INQUEST AND SUPERIOR COURT, 1920--. 49 papers in 1 f.d. Last entry 1931.
Arr. chron. by date of inquest. No index.
For principal file of criminal case papers, see entry 16.

Dockets

24. CRIMINAL APPEARANCE DOCKET, 1897--. 1 vol.
Arr. chron. by court term. Indexed alph. by first letter of defendant's surname and chron. thereunder.

Grand Jury

25. GRAND JURY DOCKET, 1913--. 2 vols. (A; 1 vol. not labeled).
Arr. chron. by court term. No index.
26. SUMMONS BEFORE GRAND JURY (Stubs), 1903--. 1 vol.
Arr. numer. by summons no. No index.

Subpoenas

27. SUBPOENAS (Stubs), 1931--. 1 vol.
Arr. numer. by subpoena no. No index.

Minutes and Proceedings (See also entry 22)

28. CRIMINAL EVIDENCE, 1935--. 1 vol.
Arr. chron. by court term. Indexed alph. by first letter of defendant's surname and chron. thereunder.

29. (REPORTS OF CONVICTIONS), 1912--. 1 vol.
Arr. chron. by date of report. No index.

Voters

(See also entry 77)

30. (QUALIFIED VOTERS LIST), 1937--. Est. 315 papers in 1 f.d.
Arr. chron. by date of list; each list divided into sections by district or precinct and arr. alph. by name of voter thereunder. No index.

IV. SOLICITOR GENERAL

The solicitor general of the Brunswick circuit, in which Echols County was placed at its creation,(1) served this county until 1870. The county is now in the Southern circuit,(2) and is served by the solicitor general of this latter circuit.(3) This official is elected by the State electorate and holds office for a term of 4 years.(4) His principal duty is to serve as the State prosecuting officer of the superior court.(5)

V. JURY COMMISSIONERS

A jury commission was established in Echols County under authority of an act approved in 1879 which provided for such boards in all counties.(6) It succeeded to those duties concerning the selection of jurors which had been performed from the creation of Echols County until 1869 by the inferior court justices, the superior court clerk, and the sheriff,(7) and from 1869 until 1879 by the ordinary, the superior court clerk and three commissioners appointed by the superior court judge.(8) The commission consists of six discreet persons who are appointed by the superior court judge for 6-year terms.(9) The clerk of the superior court serves as their clerk.(10) The

-
- 1) Ga. Acts 1858, p. 37.
 - 2) Ga. Acts 1873, p. 58.
 - 3) Ga. Acts 1939, p. 1469.
 - 4) Ga. Code of 1933, #2-3901.
 - 5) Ga. Code of 1933, #24-2908.
 - 6) Ga. Acts 1878-79, p. 27.
 - 7) Ga. Acts 1805, p. 43.
 - 8) Ga. Acts 1869, p. 139.
 - 9) Ga. Code of 1933, #59-101; Ga. Acts 1878-79, p. 27.
 - 10) Ga. Code of 1933, #59-104; Ga. Acts 1878-79, p. 28.

jury commissioners select the names of citizens of the county to be placed in grand and trial jury boxes.(1)

VI. GRAND JURY

Establishment of a grand jury in Echols County was provided for by the act creating the county(2) under authority of the State's first constitution, which recognized the existence of such bodies in all counties.(3) The grand jury consists of not less than 18 or more than 23 persons.(4) The names of members are drawn from a box of eligible grand jurors as selected by the jury commissioners.(5) No citizen can be compelled to serve on the grand jury for more than 4 weeks in 1 year.(6) The grand jury has a foreman, who may be appointed by the superior court judge. However, the foreman may be elected by the jury if the judge so directs.(7) A clerk is elected by custom, there being no legal provision for the office. The solicitor general is the grand jury's counsel.(8) The principal duty of the grand jury is to investigate criminal offenses that come to its knowledge and to indict law violators.(9) It also makes recommendations concerning county matters.(10)

All presentments, indictments, and other proceedings of the grand jury are returned to the superior court clerk.

VII. INFERIOR COURT

The inferior court was established in Echols County by the act of 1858 creating the county,(11) and exercised jurisdiction until 1868, when it was abolished in toto.(12) There were five justices of the inferior court,(13) who were elected by the qualified voters of the county for terms of 4 years.(14) An inferior court clerk was provided, who was elected by the qualified voters of the county for a term of 2 years.(15) The same person could serve as clerk of both the superior and inferior courts.(16) Although the inferior court functioned in Echols County in only two capacities, it sat originally in three ways, as a court of ordinary, with jurisdiction over

-
- 1) Ga. Code of 1933, #59-106; Ga. Acts 1878-79, pp. 27, 34.
 - 2) Ga. Acts 1858, pp. 37-40.
 - 3) Ga. Const. 1777, art. XLV.
 - 4) Ga. Code of 1933, #59-202; Act 1799, Cobb, p. 547; Ga. Acts 1869, p. 140.
 - 5) Ga. Code of 1933, #59-106; Ga. Acts 1878-79, pp. 27, 34; 1892, p. 61.
 - 6) Ga. Code of 1933, #59-118; Ga. Acts 1872, p. 15.
 - 7) Ga. Code of 1933, #59-208.
 - 8) Ga. Code of 1933, #24-2908.
 - 9) Ga. Code of 1933, #59-304; Act 1829, Cobb, p. 553.
 - 10) Ga. Code of 1933, #59-317; Ga. Acts 1889, p. 156.
 - 11) Ga. Acts 1858, pp. 37-40.
 - 12) Ga. Const. 1868, art. V, sec. XIV.
 - 13) Ga. Acts 1858, p. 38.
 - 14) Ga. Acts 1811, p. 128.
 - 15) Act 1811, Prince to 1820, p. 120.
 - 16) Ga. Acts 1799, Jan. An. Sess., sec. 36, p. 38.

estate and probate matters,(1) as a court of law with jurisdiction inferior to that of the superior court,(2) and as the administrative agency in charge of county affairs.(3) It was shorn of the first of these jurisdictions, ordinary functions, in 1852, 6 years prior to the creation of Echols County, when a separate court of ordinary was established;(4) of the second, as a court of law, in 1866,(5) and of the third, administration of county affairs, in 1868.(6)

No inferior court records were found in Echols County.

VIII. COURT OF ORDINARY AND CLERK

A court of ordinary, with jurisdiction over estate and probate matters, was established in Echols County by the act creating the county,(7) and has continued to function to the present.(8) From time to time, it has been vested with various other powers, duties, and jurisdictions. There is one ordinary, elected by the qualified voters of the county for a term of 4 years.(9) The ordinary is by virtue of his office his own clerk, or he may appoint at his own expense one or more clerks, for whose conduct he is responsible.(10) The ordinary of Echols County also administered county affairs from the time this power was transferred to it from the inferior court in 1868,(11) until 1873, when a board of commissioners of roads and revenue was established.(12) The ordinary again assumed jurisdiction over county affairs in 1885, when the original board of commissioners of roads and revenue was abolished,(13) and held such jurisdiction until 1893, when a second board of commissioners was established.(14)

All records of the ordinary are located in the superior court clerk's and ordinary's vault, unless otherwise indicated in the entries.

Minutes

31. MINUTES, 1899-- . 3 vols. (1-3).

Arr. chron. by court term. Indexed alph. by first letter of petitioner's surname or name of subject and chron. thereunder.

-
- 1) Ga. Acts 1799, Jan. An. Sess., pp. 71-73.
 - 2) Act 1797, Marbury and Crawford, pp. 285-287.
 - 3) Act 1796, Marbury and Crawford, pp. 171, 172.
 - 4) Ga. Acts 1849-50, pp. 117, 118; 1851-52, pp. 49, 50, 91-98.
 - 5) Ga. Acts 1865-66, pp. 22, 66-71.
 - 6) Ga. Const. 1868, art. V, sec. XIV.
 - 7) Ga. Acts 1858, pp. 37-40.
 - 8) Ga. Code of 1933, #24-1701.
 - 9) Ga. Code of 1933, #24-1702; Ga. Acts 1872, pp. 81, 82.
 - 10) Ga. Code of 1933, #24-1801; Ga. Acts 1851-52, p. 50.
 - 11) Ga. Const. 1868, art. V, secs. V, XIV.
 - 12) Ga. Acts 1873, pp. 231, 232.
 - 13) Ga. Acts 1885, p. 438.
 - 14) Ga. Acts 1893, pp. 360, 361.

Wills

32. RECORD OF WILLS, 1903--. 1 vol.

Arr. chron. by date recorded. Indexed alph. by first letter of testator's surname and chron. thereunder.

Estates

Case Papers

33. FINISHED PAPERS (Wills and Estate Papers), 1898--. Est. 300 papers in 3 f.b. (dated).

Also contains: Annual (and Final) Returns and (\$300 Pony) Homesteads, 1898-1927, entry 41. Arr. alph. by first letter of name of estate and chron. thereunder. No index.

Letters, Representatives of Estates

34. LETTERS OF GUARDIANSHIP AND ADMINISTRATION, 1899--. 1 vol.

Arr. chron. by date issued. Indexed alph. by first letter of name of estate and chron. thereunder.

35. LETTERS TESTAMENTARY, 1908--. 1 vol. Last entry 1933.

Arr. chron. by date issued. Indexed alph. by first letter of representative's surname and chron. thereunder.

Dockets

36. ORDINARY'S DOCKET, 1898--. 1 vol.

Arr. chron. by court term. Indexed alph. by first letter of name of estate and chron. thereunder.

Bonds, Representatives of Estates

37. ADMINISTRATORS AND GUARDIANS BONDS, 1898--. 1 vol.

Arr. chron. by date recorded. Indexed alph. by first letter of representative's surname and chron. thereunder.

Inventories and Appraisements

38. INVENTORY AND APPRAISEMENT (of Estates), 1898--. 1 vol.

Arr. chron. by date recorded. Indexed alph. by first letter of name of estate and chron. thereunder.

Widows' Year's Support

39. YEARS SUPPORT (Widows), 1899--. 1 vol.

Record of report of appraisers appointed to appraise and set aside property out of estate to maintain widow for year following date administration is granted on estate. Arr. chron. by date of appraisers' report. No index.

Sales

40. SALE BILL OF (Estate) PROPERTY, 1899--. 1 vol.

Court of Ordinary and Clerk -
Lunacy; Marriages; Homesteads and
Exemptions; Official Bonds;
Pensions and Confederate Records

Arr. chron. by date of sale. Indexed alph. by first letter of name of estate and chron. thereunder.

Returns

41. ANNUAL (and Final) RETURNS AND (\$300 Pony) HOMESTEADS, 1927--.
Est. 210 papers in 1 f.b. 1898-1927 in Finished Papers (Wills
and Estate Papers), entry 33.

Arr. alph. by first letter of representative's surname and chron. thereunder. No index.

42. ANNUAL (and Final) RETURNS (of Representatives of Estates),
1898--. 1 vol. Last entry 1937.

Arr. chron. by date recorded. Indexed alph. by first letter of representative's surname and chron. thereunder.

Lunacy

43. LUNACY RECORD, 1899--. 1 vol.

Arr. chron. by date recorded. Indexed alph. by first letter of alleged lunatic's surname and chron. thereunder.

Marriages

44. MARRIAGE LICENSES (White and Colored), 1902--. Est. 500 licenses
in 2 f.b. (dated).

Arr. alph. by first letter of male's name and chron. thereunder. No index.

45. MARRIAGE RECORD (White and Colored), 1898--. 2 vols. (1, 2).

Arr. chron. by date recorded. Indexed alph. by first letter of male's surname and chron. thereunder.

Homesteads and Exemptions (See also entries 33, 41)

46. PONY SCHEDULE (\$300 Homesteads), 1898--. 1 vol.

Arr. chron. by date of exemption order. Indexed alph. by first letter of petitioner's surname and chron. thereunder.

Official Bonds

47. OFFICIAL BONDS AND OATH, PISTOL TOTERS (Applications and) BOND,
1925--. Est. 100 papers in 1 f.b.

Arr. alph. by first letter of principal's surname and chron. thereunder.
No index.

48. OFFICIALS' (and Constables') BONDS, 1898--. 1 vol.

Arr. chron. by date recorded. Indexed alph. by first letter of official's surname and chron. thereunder.

Pensions and Confederate Records

49. PENSION ROLL (Confederate - and Register of Special License Tax),

1932-35. 1 vol. Pension Roll discontinued as county record
1935; now carried by Division of Confederate Pensions and Records.
Vol. divided into sections; each section arr. chron. No index.

Spirituous Liquors

50. WHISKEY REGISTER, 1916-17. 1 vol.
Register of shipments of whiskey into county. Arr. alph. by first letter
of consignee's surname and chron. thereunder. No index.

Licenses

51. PISTOL TOTERS RECORD (Applications for Licenses and Bonds), 1911--.
2 vols. (1, 2).
Arr. chron. by date recorded. No index.

Vital Statistics

52. BIRTHS, 1919--. 1 vol.
Arr. numer. by file no. For index, see entry 53.

53. (INDEX TO BIRTHS), 1919--. Est. 500 cards in 2 f.b.
Serves as index to Births, entry 52. Arr. alph. by infant's name.

54. DEATHS, 1919--. 1 vol.
Arr. numer. by file no. For index, see entry 55.

55. DEATH CERTIFICATES (Index to Deaths), 1919--. Est. 400 cards in
1 f.b.
Serves as index to Deaths, entry 54. Arr. alph. by name of deceased.

Marks and Brands

56. RECORD (of Owners') MARKS AND BRANDS (of Animals), 1900--. 1 vol.
Arr. chron. by date registered. Indexed alph. by first letter of owner's
surname and chron. thereunder.

Newspapers

57. THE VALDOSTA TIMES, May 2, 1931--. Est. 1,550 papers in 4 f.b.
Arr. chron. by date published. No index. Ord.'s off.

IX. COUNTY COURT

A county court was established in Echols County in 1866,(1) but was
abolished by the Constitution of 1868.(2) It was again established in
1900,(3) and has functioned to the present. One judge serves this court

1) Ga. Acts 1865-66, p. 64.

2) Ga. Const. 1868, art. V, sec. XVI.

3) Ga. Acts 1871-72, pp. 288-298; Minute Book (Civil and Criminal), vol.
A, 1898-1914, p. 73, see entry 22.

and he is elected by the qualified voters of the county for a term of 2 years.(1) The court has jurisdiction over minor criminal cases, misdemeanors, and civil matters above \$50 and not exceeding \$500.(2) The judge is his own clerk.

All records of the county court are located in the county court judge's office.

58. CIVIL (Trial) DOCKET, 1900--. 1 vol.
Arr. chron. by court term. No index.

59. EXECUTION DOCKET, 1901--. 1 vol. Last entry 1934.
Arr. chron. by date of judgment. No index.

60. MINUTES (Civil and Criminal), 1900--. 2 vols. (A, B).
Arr. chron. by court term. No index.

61. CRIMINAL (Trial) DOCKET, 1900--. 3 vols. (A, A, B).
Arr. chron. by court term. No index.

X. COUNTY COURT SOLICITOR

The office of county court solicitor was first established in Echols County with the creation of a county court in 1866,(3) but ceased to function with the court's abolition in 1868.(4) This office was again created in 1900,(5) and existed until 1915, when the duties of this officer were transferred to the solicitor general.(6) The county court solicitor was appointed by the Governor and served for a term of 2 years.(7) It was his duty to prosecute all criminal cases in the county court.

XI. CRIMINAL COURT

Provision was made for and a criminal court established in Echols County by an act of the legislature in 1868,(8) but the act creating this court was repealed 2 years later.(9) Two judges were provided for each criminal court, these being the justice of the peace and the commissioned notary public ex officio justice of the peace in the militia district in which the county seat was located, or in any militia district in which there was an incorporated town.(10) The court had jurisdiction over all

-
- 1) Ga. Acts 1911, pp. 381, 382.
 - 2) Ga. Acts 1893, pp. 22, 23.
 - 3) Ga. Acts 1865-66, p. 70.
 - 4) Ga. Const. 1868, art. V, sec. XVI.
 - 5) Minute Book (Civil and Criminal), vol. A, 1898-1914, p. 111, see entry 22.
 - 6) Ibid., vol. B, 1914-29, p. 33, see entry 22.
 - 7) Ga. Acts 1890-91, vol. I, p. 98.
 - 8) Ga. Acts 1868, pp. 19-21.
 - 9) Ga. Acts 1870, p. 31.
 - 10) Ga. Acts 1868, p. 19.

Justice of the Peace Courts -
904th Militia District; 1058th
Militia District

(62-64)

offenses, except those punishable by death or confinement in the penitentiary.(1)

No records of this court were found in Echols County.

XII. JUSTICE OF THE PEACE COURTS

Justices of the peace functioning within the area set off in 1858 as Echols County were continued in office until the election and qualification of their successors, as directed by the act creating the county,(2) and provision was made by the same act for the creation of new militia districts and establishment therein of justice of the peace courts. There are now five militia districts in Echols County,(3) each served by a justice of the peace court,(4) and in addition, there can be a commissioned notary public ex officio justice of the peace in each of these districts.(5) The justices of the peace are elected by the voters of their respective militia districts and serve 4-year terms.(6) The notaries public ex officio justices of the peace are appointed by the superior court judge upon recommendation of the grand jury, are commissioned by the Governor, and likewise serve for 4 years.(7) These courts, among other powers, have jurisdiction over civil cases up to \$100,(8) are charged with the maintenance of peace in their respective districts, may issue warrants for the apprehension of persons charged with any crime, sit as a committing court and commit to jail, bind over, or discharge such persons;(9) and can perform marriages.(10)

904th Militia District

62. CIVIL DOCKET, 1891-1911. 1 vol. 1912-- said to be in possession of justice of the peace.

Arr. chron. by court term. No index. Ord.'s off.

1058th Militia District

63. CIVIL DOCKET, 1913-May 1919, Jan. 1933--. 2 vols. Title varies: Docket, 1913-19, 1 vol.

Arr. chron. by court term. No index. Sheriff's off.

64. CRIMINAL DOCKET, 1902--. 1 vol.

Arr. chron. by court term. No index. Sheriff's off.

-
- 1) Ga. Acts 1868, p. 19.
 - 2) Ga. Acts 1858, p. 39.
 - 3) Tax Digest, 1939, see entry 73.
 - 4) Ga. Code of 1933, #2-3501, #24-401.
 - 5) Ga. Code of 1933, #2-3601, #24-501.
 - 6) Ga. Code of 1933, #2-3503, #24-401.
 - 7) Ga. Code of 1933, #2-3601, #24-501.
 - 8) Ga. Code of 1933, #2-3502, #24-1001; Act 1811, Cobb, p. 638; 1819, Cobb, p. 649.
 - 9) Ga. Code of 1933, #24-1501.
 - 10) Ga. Code of 1933, #53-201.

1211th Militia District

65. CIVIL DOCKET, 1902-8. 1 vol. 1909-- said to be in possession of justice of the peace.
Arr. chron. by court term. No index. Ord.'s off.

XIII. CONSTABLES

Constables are the process servers and arresting officers of justice of the peace and commissioned notaries public ex officio justice of the peace courts.(1) Two constables may serve in each militia district,(2) of which there are five in Echols County.(3) Constables are elected by the qualified voters of their respective districts,(4) but where a vacancy exists from any cause, the office can be filled by appointment by the justice of the peace of the district.(5) Constables hold office for 4 years.(6)

XIV. COUNTY ATTORNEY

The Echols County board of commissioners of roads and revenue was authorized in 1933 by the legislature to employ a county attorney.(7) However, Georgia counties are corporate bodies with the power to sue and be sued,(8) and as such, have acted under their implied authority to employ attorneys since an early period in the State's history. The minutes of the board of commissioners of roads and revenue show the employment of a county attorney in January 1912.(9) The county attorney serves at the discretion of the board of commissioners.

XV. CORONER

The office of coroner was provided for by an act of 1799, and the office was established by the act creating Echols County,(10) and this office has continued to function to the present.(11) There is one coroner for the county, who is elected by the qualified voters of the county and holds office for a term of 4 years.(12) It is the duty of the coroner to conduct inquests,(13) and he is the only county official empowered to arrest the

-
- 1) Ga. Code of 1933, #24-817.
 - 2) Ga. Code of 1933, #24-801; Act 1829, Cobb, p. 213.
 - 3) Tax Digest, 1939, see entry 73.
 - 4) Ga. Code of 1933, #24-801; Act 1829, Cobb, p. 213.
 - 5) Ga. Code of 1933, #24-806; Act 1811, Cobb, p. 201.
 - 6) Ga. Code of 1933, #24-801; Act 1829, Cobb, p. 213.
 - 7) Ga. Acts 1933, p. 529.
 - 8) Ga. Code of 1933, #23-1501; Ga. Acts 1863-64, pp. 72, 73.
 - 9) Minutes, Commissioners Roads and Revenues, vol. 1, 1898-1923, p. 200, see entry 1.
 - 10) Ga. Acts 1799, Jan. An. Sess., pp. 119-122; 1858, pp. 37-40.
 - 11) Ga. Code of 1933, #21-101.
 - 12) Ga. Code of 1933, #21-101; Ga. Acts 1914, p. 43.
 - 13) Ga. Code of 1933, #21-201.

sheriff.(1) The coroner can function in the capacity of sheriff in the event this latter official is disqualified or refuses to act.(2) The coroner is not required to keep any records, but returns all papers relating to inquests to the superior court.(3)

XVI. SHERIFF

The office of sheriff was provided for Echols County by the act creating the county,(4) and this office has continued to function to the present.(5) There is one sheriff and he is elected by the qualified voters of the county for a term of 4 years.(6) The sheriff is the principal law enforcement officer and process server of the county.(7)

All records of the sheriff are located in the sheriff's office.

66. SHERIFF'S EXECUTION DOCKET, 1897-1925. 1 vol. Discontinued. Arr. chron. by date execution issued. Indexed alph. by first letter of plaintiff's surname and chron. thereunder.

67. SHERIFF'S SALE RECORD, 1898-1934. 1 vol. Discontinued. Record of sales of property levied upon by virtue of execution issued. Arr. chron. by date of sale. Indexed alph. by first letter of defendant's surname and chron. thereunder.

68. SHERIFF'S BONDS (Appearance), 1912--. 1 vol. Arr. chron. by date of bond. No index.

69. JAIL RECORD (of Prisoners Committed), 1900--. 1 vol. Arr. chron. by date committed to jail. No index.

XVII. TAX RECEIVER

The office of tax receiver was provided for Echols County by the act creating the county.(8) Two years later, this office and that of tax collector were consolidated,(9) one official serving in the dual capacity until the offices were again made separate and distinct by an act of 1879.(10) Since that time the office of tax receiver has continued as a separate agency.

-
- 1) Ga. Code of 1933, #39-114; Act 1847, Cobb, p. 517.
 - 2) Ga. Code of 1933, #21-106.
 - 3) Ga. Code of 1933, #21-215; Act 1823, Cobb, p. 539.
 - 4) Ga. Acts 1858, p. 38.
 - 5) Ga. Code of 1933, #24-2801.
 - 6) Ga. Code of 1933, #24-2801; Act 1799, Cobb, p. 198; Ga. Code of 1933, #24-2701.
 - 7) Ga. Code of 1933, #24-2813.
 - 8) Ga. Acts 1858, p. 38.
 - 9) Ga. Acts 1860, p. 149.
 - 10) Ga. Acts' 1878-79, p. 76.

The tax receiver is elected by the qualified voters of the county and serves for a term of 4 years.(1) His principal duties are to receive tax returns from all taxpayers of the county and to prepare tax digests.(2)

All records of the tax receiver are located in the superior court clerk's and ordinary's vault.

70. (TAXPAYERS' RETURNS OF PROPERTY), 1912--. 28 vols.
Arr. numer. by district no. and alph. by name of taxpayer thereunder. No index.

71. (APPLICATIONS FOR HOMESTEAD TAX EXEMPTION - WHITE AND COLORED), 1937--. Est. 650 cards in 1 f.d.
Arr. alph. by first letter of applicant's surname and chron. thereunder. No index.

72. (APPLICATIONS FOR TAX EXEMPTION ON PERSONAL PROPERTY - WHITE AND COLORED), 1937--. Est. 650 cards in 1 f.d.
Arr. alph. by first letter of applicant's surname and chron. thereunder. No index.

XVIII. BOARD OF TAX ASSESSORS

A board of tax assessors was established in Echols County under authority of an act of 1913.(3) It is the duty of this board to see that all property is returned at a just and fair valuation.(4) The board consists of three members appointed for 6-year terms by the board of commissioners of roads and revenue.(5) The board has authority to employ a competent person to serve as secretary and an agent to seek out all unreturned property.(6)

XIX. TAX COLLECTOR

A tax collector was provided for Echols County by the creating act, but 2 years later the office was combined with that of tax receiver.(7) One official served in both capacities until the office was again made separate and distinct by an act of 1879.(8) Since that time, the office of tax collector has been continued as a separate agency. The tax collector is elected by the qualified voters of the county and serves for 4 years.(9) His principal duties are to collect State and county taxes and to pay to the State

-
- 1) Ga. Code of 1933, #2-8301.
 - 2) Ga. Code of 1933, #92-4611, pars. 1, 2.
 - 3) Ga. Acts 1913, pp. 123-134.
 - 4) Ga. Code of 1933, #92-6911.
 - 5) Ga. Code of 1933, #92-6903, #92-6904; Ga. Acts 1913, p. 124.
 - 6) Ga. Code of 1933, #92-6910; Ga. Acts 1913, p. 126.
 - 7) Ga. Acts 1858, p. 38; 1860, p. 149.
 - 8) Ga. Acts 1878-79, p. 76.
 - 9) Ga. Code of 1933, #2-8301.

and county treasurers their proportionate share of the taxes.(1) Among other duties, he collects poll taxes and keeps a permanent record of qualified voters.(2)

73. TAX DIGEST, 1898-1902, 1904-13, 1915-30, 1933--. 39 vols. (dated). Arr. numer. by district no. and alph. by taxpayer's surname thereunder. No index. Sup. ct. cl.'s and ord.'s va.

74. TAX RECEIPTS, 1919--. 101 vols. Arr. numer. by receipt no. No index. 100 vols., 1919-36, D.P.W. off.; 1 vol., 1937--, tax col.'s home.

75. CASH BOOK, 1912, 1915-18, 1921-27, 1931--. 14 vols. Arr. chron. by date tax paid. No index. 12 vols., 1912-27, D.P.W. off.; 2 vols., 1931--, tax col.'s home.

76. TAX COLLECTORS EXECUTION DOCKET, 1907-Nov. 1908, Jan. 4, 1915--. 4 vols. (2 vols. not labeled; dated). Docket of executions issued for collection of delinquent taxes. Arr. chron. by date execution issued. No index. 3 vols., 1907-33, sup. ct. cl.'s and ord.'s va.; 1 vol., 1934--, tax col.'s home.

77. (VOTERS BOOK), 1915--. 3 vols. Arr. numer. by district no. and alph. by name of voter thereunder. No index. Sup. ct. cl.'s and ord.'s va.
For list of voters, 1937--, see entry 30.

XX. FISCAL DEPOSITORY (Formerly County Treasurer)

A county depository, which also acts as disbursing agent, succeeded on January 1, 1917, to the duties of the Echols County treasurer under authority of an act of 1915.(3) The county depository is selected by the board of commissioners of roads and revenue, and the term of appointment is left to the discretion of the appointing board. All clerical services are rendered by the bank employees.(4) A county treasurer had served in Echols County from soon after its creation in 1858 until establishment of the county depository.(5)

XXI. REGISTRARS

Registrars were provided for each county by an act of 1894,(6) and this office has continued to function in Echols County to the present. The board is composed of three members, who are appointed by the superior court judge from more than one political interest or party, and their terms of office

-
- 1) Ga. Code of 1933, #92-4901, par. 1.
2) Ga. Code of 1933, #92-4901, par. 11.
3) Ga. Acts 1915, pp. 215-218.
4) Ibid.
5) Ga. Acts 1915, p. 215.
6) Ga. Code of 1933, #34-301; Ga. Acts 1894, pp. 115-118.

are for 2 years.(1) It is their principal duty to prepare on or before June 1 of each election year a list of registered voters of the county, and if in the opinion of the judge, the registrars cannot prepare such list within the required time, one or more assistant boards of registrars may be appointed by him.(2)

The registrars are required to deposit their records upon completion with the clerk of the superior court; see entry 30.

XXII. BOARD OF EDUCATION

A board of education was provided for in Echols County in 1859,(3) to succeed to the powers and duties which had been exercised by the ordinary as ex officio commissioner of schools, charged with administering school affairs.(4) A county commissioner of schools replaced the board of education in 1866 and functioned until 1870, when another board of education was authorized by the legislature.(5) Under an act of 1872, a five-member board of education was provided and this number has been retained.(6) Members of the board are selected by the grand jury and hold office for 4 years.(7) The county school superintendent acts as secretary of the board.(8)

78. MINUTES (Board of Education), 1898--. 3 vols.
Arr. chron. by date of meeting. No index. School supt.'s off.

XXIII. SUPERINTENDENT OF SCHOOLS

The office of superintendent of schools was established in Echols County in 1911.(9) From the creation of the county in 1858 to 1859, the ordinary was ex officio school commissioner,(10) and from 1859 to 1866 the board of education handled all school matters.(11) In 1866 a commissioner of schools for each county was authorized by the legislature,(12) and this official served until the title of his office was changed to superintendent of schools in 1911.(13) The superintendent of schools is elected by the qualified voters

-
- 1) Ga. Code of 1933, #34-301, #34-302; Ga. Acts 1894, p. 118.
 - 2) Ga. Code of 1933, #34-403; Ga. Acts 1908, p. 59; 1924, p. 48.
 - 3) Ga. Acts 1859, pp. 29-31.
 - 4) Ga. Acts 1851-52, pp. 1-4; 1858, pp. 37-40.
 - 5) Ga. Acts 1866, pp. 58-64; 1870, pp. 49-60.
 - 6) Ga. Acts 1871-72, pp. 279-283; Ga. Code of 1933, #32-902; Ga. Acts 1919, p. 320.
 - 7) Ga. Acts 1871-72, pp. 279-283; Ga. Code of 1933, #32-902; Ga. Acts 1919, p. 320.
 - 8) Ga. Code of 1933, #32-1004; Ga. Acts 1919, p. 350.
 - 9) Ga. Acts 1911, p. 101.
 - 10) Ga. Acts 1851-52, pp. 1-4; 1858, pp. 37-40.
 - 11) Ga. Acts 1859, pp. 29-31.
 - 12) Ga. Acts 1866, p. 59.
 - 13) Ga. Acts 1911, p. 101.

of the county for a term of 4 years.(1) He is secretary of the county board of education and is its chief executive officer.(2)

All records of the superintendent are located in his office.

Financial Records

79. PUBLIC SCHOOL COMBINED JOURNAL AND DAILY FINANCIAL STATEMENT, 1922-29. 1 vol. Discontinued.
Arr. chron. by date of entry or statement. No index.

80. (BILLS PAYABLE), 1917-Jan. 1922, June 18, 1929--. Est. 210 papers in 4 bdles.
Arr. chron. by date entered. No index.

Reports

81. (TEACHERS' MONTHLY ATTENDANCE REPORTS), 1935--. Est. 220 papers in 2 desk drawers.
Arr. chron. by date of report. No index.

82. (PRINCIPAL'S NARRATIVE REPORT), 1933--. Est. 220 papers in 1 bdle.
Arr. chron. by date of report. No index.

83. (PRINCIPAL'S ELEMENTARY AND SCHOOL BOOK REPORTS), 1937--. Est. 200 reports in 1 bdle.
Arr. chron. by date of report. No index.

84. (SUPERINTENDENT'S ANNUAL FINANCIAL REPORTS), 1929--. 12 reports in 1 bdle.
Arr. chron. by date of report. No index.

85. SCHOOL ATTENDANCE AND TEXT BOOK REGISTER, 1917-Mar. 1919, Apr. 6, 1925--. 195 vols. (dated).
Arr. alph. by name of pupil. No index.

School Tax

86. (RETURNS OF TAXPAYERS FOR SCHOOL TAX), 1930--. 1 vol. and est. 600 papers in 2 bdles.
Arr. by school district and alph. by name of taxpayer thereunder. No index.

XXIV. BOARD OF HEALTH

Provision was made in 1914 for establishment of a board of health in Echols County.(3) Prior to that time, county health matters had been under the general supervision of the authority having charge of county affairs.(4)

-
- 1) Ga. Code of 1933, #32-1002; Ga. Acts 1911, p. 101.
 - 2) Ga. Code of 1933, #32-907, #32-1009.
 - 3) Ga. Code of 1933, #88-201; Ga. Acts 1914, p. 125.
 - 4) Ga. Acts 1858, pp. 37-40; Ga. Const. 1868, art. V, secs. V, XIV; Ga. Acts 1873, pp. 231, 232; 1884-85, p. 438; 1893, pp. 360, 361.

Department of Public Welfare -
Cases; Applications; Investigations

The board of health is composed of the county superintendent of schools and the chairman of the board of commissioners of roads and revenue, who are members by virtue of their offices, and a reputable physician appointed by the grand jury.(1) The latter serves a 4-year term.(2) Apparently a board of health did not begin functioning in Echols County until 1936.(3)

XXV. DEPARTMENT OF PUBLIC WELFARE

The department of public welfare was established in Echols County in 1937,(4) and assumed welfare activities previously under the general supervision of the authority having charge of county affairs.(5) The county board of public welfare is composed of five members, who are appointed by the board of commissioners of roads and revenue, subject to the approval of the State Department of Public Welfare. The county board members serve 3-year terms.(6) The county director, appointed by the welfare board, subject to the approval of the State department, serves as board secretary.(7)

All records of the department are located in the welfare office.

Cases

87. (ACTIVE AND CLOSED CASES), 1937---. Est. 450 papers in 1 f.d. Active and closed cases divided in f.d., each section arr. alph. by name of client. For index, see entry 88.

88. (MASTER INDEX CARDS), 1937---. Est. 260 cards in 1 f.b. Serves as index to (Active and Closed Cases), entry 87. Arr. alph. by client's name.

Applications

89. REGISTER OF APPLICATIONS, 1937---. 1 vol. Arr. chron. by date of application. No index.

Investigations

90. SERVICE REQUEST, 1937---. Est. 300 papers in 1 f.b. Arr. by type of assistance and numer. by case no. thereunder. No index.

-
- 1) Ga. Code of 1933, #88-201; Ga. Acts 1914, p. 125.
 - 2) Ibid.
 - 3) Statement of Dr. Guy D. Lunsford, Director of division of local health organizations, State Board of Health, July 19, 1940; Minute Book (Civil and Criminal), vol. C, 1925---, p. 144, see entry 22.
 - 4) Ga. Acts 1937, pp. 363, 364.
 - 5) Ga. Acts 1858, pp. 37-40; Ga. Const. 1868, art. V, secs. V, XIV; Ga. Acts 1873, pp. 231, 232; 1884-85, p. 438; 1893, pp. 360, 361; 1937, pp. 363, 364.
 - 6) Ga. Acts 1937, p. 364.
 - 7) Ga. Acts 1937, pp. 364, 365.

91. CASE REGISTRATION LEDGER, 1937--. 1 vol.
Arr. numer. by case no. No index.

Special Assistance

92. CERTIFICATE CONTROL, 1937--. 1 vol.
Arr. chron. by date recorded. No index.

93. CERTIFICATE OF AWARDS (General Assistance), 1937--. 1 vol.
Arr. numer. by certificate no. No index.

94. (RECORD OF AWARD AND MODIFICATION), 1937-39. 30 cards in 1 f.b.
Discontinued.
Arr. chron. by date of award. No index.

95. ALLOTMENT REGISTER, 1937-Feb. 1939. 1 vol. Discontinued.
Arr. chron. by date of allotment. No index.

96. (MONTHLY STATISTICAL REPORT), 1937--. Est. 60 papers in 1 loose
leaf binder.
Arr. chron. by date of report. No index.

Financial Records

97. (PAYMENT SCHEDULE AND CHECK REGISTER), 1937--. 1 vol.
Arr. chron. by date paid and numer. by check no. No index.

98. (OFFICIAL ACTION ON AWARDS), 1937--. 1 vol.
Arr. numer. by certificate no. No index.

99. REGISTER OF CASH RECEIPTS AND DISBURSEMENTS, 1937--. 1 vol.
Arr. chron. by date received or disbursed. No index.

XXVI. ROAD COMMISSIONERS

Road commissioners were provided for Echols County on its creation in 1858 by authority of an act of 1818.(1) Three commissioners, appointed by the board of commissioners of roads and revenue, serve in each road district for terms of 2 years.(2) At present they have but few duties except to inspect and report to the county commissioners on the condition of public roads, bridges, and ferries within their districts.(3)

XXVII. COUNTY SURVEYOR

The office of county surveyor was established in Echols County with the county's formation in 1858,(4) and has continued to function to the present. The surveyor is elected by the qualified voters of the county for a term of

-
- 1) Act 1818, Cobb, p. 947.
2) Ga. Code of 1933, #95-301, #95-302; Act 1818, Cobb, p. 947.
3) Ga. Code of 1933, #95-307.
4) Ga. Acts 1858, pp. 37-40.

4 years.(1) Among his duties are the surveying of county and district lines, the execution of surveys required by court order, and the platting of all surveys made by him.(2)

XXVIII. COUNTY AGRICULTURAL AGENT

A county agricultural agent serves in Echols County under authority of an act of the legislature adopted in 1914.(3) This act constituted the assent of the State to the provisions of the Federal Smith-Lever act, which inaugurated a program in cooperation with State agricultural colleges for the improvement of productive methods and living conditions of farmers by extension work.(4) The Georgia code authorizes the employment of agricultural agents by counties.(5) In Echols County the county agricultural agent is recommended by the college of agriculture of the University of Georgia, the county commissioners and the board of education concurring.(6) The term of office is fixed by agreement.(7)

All records of the agricultural agent are located in his office, in a small building near the courthouse.

100. (TOBACCO CONTRACTS AND OTHER TOBACCO RECORDS), 1934--. Est. 640 papers in 2 f.d.

Arr. alph. by name of farmer. No index.

101. (SOIL CONSERVATION PROGRAM AND CROP REPORTS), 1934-35. Est. 316 papers in 1 f.b. Discontinued.

Arr. alph. by name of subject. No index.

102. (WORK SHEETS OF INDIVIDUAL FARMERS), 1934--. Est. 1,000 papers in 3 f.d.

Arr. alph. by name of farmer. No index.

103. (RECORD OF COUNTY ASSOCIATION ESTIMATE OF ADMINISTRATIVE EXPENSES, REVISIONS, AND EXPENDITURES), 1937--. 2 vols.

Arr. chron. by date of payment. No index.

104. (LIST OF FARMERS), 1936--. 1 vol.

Arr. numer. by work sheet serial no. No index.

105. (COTTON CONTRACTS), 1935. 1 vol. Discontinued.

Arr. numer. by application serial no. No index.

-
- 1) Ga. Code of 1933, #2-8301, #23-1101; Act 1799, Cobb, p. 198.
 - 2) Ga. Code of 1933, #24-1108; Act 1838, Cobb, p. 215.
 - 3) Ga. Acts 1914, p. 1243.
 - 4) Barred Federal Code, #8413, #8414; 38 Stat. L. 372.
 - 5) Ga. Code of 1933, #32-944.
 - 6) Statement of Director, Cooperative Extension Work in Agriculture and Home Economics, State of Georgia, September 21, 1939.
 - 7) Ibid.

106. (PLANE TABLEMAN'S DAILY REPORT TO COUNTY AGENT), 1937--.

Est. 218 papers in 1 f.b.

Report of person appointed to measure crop acreage. Arr. chron. by date of report. No index.

107. (MAPS OF ECHOLS COUNTY FARMS), 1937--. Est. 350 maps in 4 bdles.

Arr. numer. by map serial no. No index.

BIBLIOGRAPHY

I. Primary Sources

Note: The records of Echols County, used in this inventory, are not listed in the bibliography. When a county record is cited, reference is made to the appropriate entry, showing the title, location, and other information about the record.

1. Census Reports

Eighth Census of the United States, 1860, Agriculture of the United States in 1860, Washington: Government Printing Office, 1864.

Ninth Census of the United States, 1870, I, The Statistics of the Population..., Washington: Government Printing Office, 1872.

Ninth Census of the United States, 1870, III, The Statistics of the Wealth and Industry of the United States..., Washington: Government Printing Office, 1872.

Eleventh Census of the United States, 1890, Report on Population of the United States..., Part I, Washington: Government Printing Office, 1895.

Thirteenth Census of the United States, 1910, II, Population, Washington: Government Printing Office, 1913.

Fifteenth Census of the United States, 1930, Population, III, Part I, Washington: Government Printing Office, 1932.

U. S. Department of Commerce, Bureau of the Census, United States Census of Agriculture: 1935, Volume I, Washington: United States Government Printing Office, 1936.

2. Legal Sources (Statutes, Codes, Compilations, Digests, etc.)

Acts and Resolutions of the General Assembly of Georgia...(title varies), 1799-1939, various dates, places of publication, and printers. (Cited in the text as Ga. Acts)

Barnes, Uriah, et al., editors, Federal Code: Containing All Federal Statutes of General and Public Nature Now in Force, Charleston, W. Va.: Virginian Law Book Co., 1919. (Cited in the text as Barnes Federal Code)

Cobb, Thomas R. R., A Digest of the Statute Laws of the State of Georgia, in Force Prior to the Session of the General Assembly of 1851, Athens, Ga.: Christy, Kelsea & Burke, 1851. (Cited in the text as Cobb)

Code of Georgia of 1933, The, Adopted March 24, 1933, Effective January 1, 1935, Prepared Under the Direction of the Code Commission...

Bibliography

Secondary Sources; Map

Atlanta: The Harrison Company, 1935. (Cited in the text as Ga. Code of 1933)

Constitutions of the State of Georgia of 1777, 1789, 1798, 1868, and 1877. (Cited in the text as Ga. Const.)

Marbury, Horatio, and William H. Crawford, Digest of the Laws of the State of Georgia, from its settlement as a British Province, in 1755 to the Session of the General Assembly in 1800, inclusive... Savannah: Seymour, Woolhopter & Stebbins, 1802. (Cited in the text as Marbury and Crawford)

Reports of Cases Decided in the Supreme Court of the State of Georgia... (title varies in early volumes), 188 vols., 1846-1939. (Cited in the text as Ga.)

Prince, Oliver H., A Digest of the Laws of the State of Georgia... Previous to the Session of the General Assembly of December 1820... Milledgeville: Grantland & Orme, 1822. (Cited in the text as Prince to 1820)

Southeastern Reporter, Cases Argued and Determined in the Courts of Georgia... (title varies), First Series, 200 vols.; Second Series, 6 vols., St. Paul, Minn.: West Publishing Co., 1887-1940. (Cited in the text as S.E.)

Statutes at Large of the United States of America, The; From March, 1913, to March, 1915, Concurrent Resolutions of the Two Houses of Congress, and Recent Treaties, Conventions, and Executive Proclamations, Volume XXXVIII, 1915. (Cited in the text as Stat. L.)

II. Secondary Sources

Gamble's International Naval Stores Year Book for 1930-31, no place, no date.

Huxford, Folks, History of Clinch County, Georgia, Revised to Date, Giving the early history of the County down to the present time (1916); also complete lists of County Officers..., Macon, Georgia: The J. W. Burke Company, 1916.

Rand McNally Commercial Atlas and Marketing Guide Seventy-first Edition, New York, Chicago, San Francisco: Rand McNally & Company (c. 1940).

Sherwood, Adiel, A Gazetteer of Georgia; Containing a Particular Description of the State..., Fourth Edition, Macon: S. Boykin; Griffin; Brawner & Putnam; Atlanta: J. Richards, 1860.

III. Map

United States Geological Survey, (Map of) State of Georgia, A. F. Hassan, cartographer (compiled in 1932).

CHRONOLOGICAL INDEX

All numbers refer to entries. A record entry number is listed under each decade which the record covers in full or in part. An entry number is underlined to call attention to the initial appearance of the record; the last listing of the entry number indicates the decade within which the record ends.

1861-70

6

1871-80

6

1881-90

6

1891-1900

1, 2, 6, 9, 12, 16-18, 20-22, 24, 31, 33, 34, 36-40, 42, 43, 45, 46, 48, 56, 58, 60-62, 66, 67, 69, 73, 78

1901-10

1, 2, 3, 6, 9, 12, 15, 16-18, 19, 20-22, 24, 26, 29, 31, 32, 33, 34, 35, 36-40, 42, 43, 44, 45, 46, 48, 56, 58, 59, 60-62, 64, 65, 66, 67, 69, 73, 76, 78

1911-20

1-3, 6, 7, 8, 9, 10, 11, 15-22, 23, 24, 25, 26, 29, 31-40, 42-46, 48, 50-55, 56, 58-62, 63, 64, 66, 67, 68, 69, 70, 73, 74, 75, 76, 77, 78, 80

1921-30

1-3, 5, 6-11, 13, 14, 15-26, 29, 31-40, 41, 42-46, 47, 48, 51-56, 58-61, 64, 66-70, 73-78, 79, 80, 84-86

1931-40

1-3, 4, 5-11, 13-17, 19-26, 27, 28, 29, 30, 31-48, 49, 51-56, 57, 58-61, 63, 64, 67-70, 71, 72, 73-78, 80, 81-83, 84-86, 87-107

INDEX

Figures underscored refer to page numbers; those not underscored refer to entry numbers.

- Abbreviations, symbols and explanatory notes, list of, 15-17
- Accounts, auditing of, 5
- Administrators, see Estates
- Advertisements, official, 57
- Agriculture, 4
- agent, county, 38, 39
- records of, 100-107
- location of, 12
- Animals, register of marks and brands, 56
- Applications
- for exemption from taxation personalty, 72
- realty, 71
- relief of poor, 89
- pistol toters
- original, 47
- record of, 51
- Appraisements of estates, 38
- Attachments, docket of, 18
- Attorney, county, 30
- Assessors, see Tax, assessors, board of
- Audits, county, 5
- Bills, see Expenditures
- Births
- record, 52
- index to, 53
- Board
- of commissioners of roads and revenue, see Commissioners of roads and revenues, board of
- of education, see Education, board of
- of health, see Health, board of
- of tax assessors, see Tax, assessors, board of
- Bonds
- administrators of estates, 37
- appearance, 68
- constables, record of, 48
- guardian, 37
- official
- original, 47
- record of, 48
- pistol toters, 47
- Case papers and pleadings
- superior court, civil and criminal, 16
- probate, estate, 33
- Census, 7
- Charity, see Public welfare, department of; Relief of poor
- Chart of government organization, 10
- Chattels, see Mortgages
- Civil records, see Case papers and pleadings; Dockets; Minutes
- Commissioners of roads and revenues, board of, 18
- records of, 1-5
- location of, 11
- Confederate soldiers, pension roll, 49
- Constables, 30
- Conveyances, see Deeds; Land records; Mortgages
- Convictions, 29
- Coroner, 30, 31
- Cotton, contracts, 105
- County
- See also Echols county
- agent, 38
- attorney, 30
- commissioners of roads and revenues, 18
- recorder, see Superior court clerk as ex officio county recorder
- surveyor, 37
- County court, 27, 28
- records of, 58-61
- location of, 12
- solicitor, 28
- Courthouse
- date built, 3
- offices in, 11
- floor plans, 13, 14
- Courts
- coroner, 30
- county, 27
- criminal, 28
- grand jury, 23
- inferior, 23
- justice of the peace, 29
- ordinary, 24
- superior, 20

- Criminal court, 28
 Criminal records, see Case papers
 and pleadings; Dockets; Minutes
- Deaths
 record of, 54
 index to, 55
- Deeds
See also Land records; Mortgages
 record of, 6
 index to, 7, 8
- Disbursements, see Expenditures
- Dockets
 civil
 attachment, 18
 execution
 county court, 59
 sheriff's, 66
 superior court, 18
 tax collector's, 76
 filing, 7, 8
 general execution, 20
 issue, superior court, 17
 subpoena, 21
 trial
 county court, 58
 justice of the peace, 62, 63,
 65
 criminal
 appearance, 24
 convictions, 29
 grand jury, 25
 subpoena
 grand jury, 26
 superior court, 27
 trial
 county court, 61
 justice of the peace, 64
 probate, ordinary, 36
- Doctors, register of, 15
- Echols county
See also County
 agriculture, 4
 creation, 1
 courthouse, 2, 3
 maps of, 6
 physical features, 1
 population, 7
- Education, board of, 34
See also Pupils; Schools,
 superintendent of
 records of, 78
 location of, 12
- Estates
 accounts and sales, 40
 bonds, 37
 case papers, 33
 dockets, 36
 inventories and appraisements, 38
 letters
 administrators, 34
 guardianship, 34
 testamentary, 35
 returns
 original, 41
 record of, 42
 widows' year's support, records
 of, 39
 wills
 original, 33
 record of, 32
- Evidence, record of, 28
- Executions, see Dockets, civil
- Executors, see Estates
- Exemptions
 homestead, see Homestead
 exemptions
 from taxation
 personalty, 72
 realty, 71
- Expenditures
 county
 cash book, 3
 orders, 2
 vouchers, 4
 school, 79, 80
 welfare, 99
- Farm agent, see Agriculture,
 agent, county
- Federal government activities,
 100-106
- Financial records, see Audits;
 Expenditures; Receipts;
 Taxation
- Fiscal depository, 33
- Floor plans, 13, 14
- Governmental organization, county,
8, 9
 chart, 10
- Grand jury, 23
 docket, 25
 records, location of, 12
 summonses before, 26
- Guardians, see Estates

- Health, board of, 35, 36
 Historical sketch, 1-5
 Homestead exemptions, pony
 petitions for, 41
 record of, 46
 Housing, care, and accessibility
 of records, 11, 12
- Indexes
 births, 53
 deaths, 55
 deeds, 7, 8
 mortgages, 7, 8
 trade names, 14
 welfare cases, 88
 Inferior court, 23
 Inquests, 23
 Inventories of estates, 38
- Jail record, 69
 Jury commissioners, 23
 Justice of the peace courts, 29
 records of, 62-65
 location of, 12
- Land records
See also Deeds; Mortgages
 filing docket, 7, 8
 title
 decrees of, 10
 register, 11
 wild, 12
- Licenses
 marriage, 44
 pistol toters, 51
- Liquor, register, 50
- Livestock, register of marks and
 brands, 56
- Lunacy, record of, 43
- Map, Echols county, 6, 107
- Marks and brands, register of, 56
- Marriages
 licenses, 44
 record of, 45
- Minutes
 civil
 county court, 60
 superior court, 22
 county purposes, 1
 criminal
 county court, 60
 superior court, 22
 education, board of, 78
 ordinary, 31
- Mortgages
See also Deeds; Land records
 record of, 9
 index to, 7, 8
- Negroes, number of, 7
- Newspapers, 57
- Oaths, official, 47
- Orders, county, 2
- Ordinary and clerk, court of,
24-27
 records, 31-57
 location of, 11
- Pensions, Confederate, 49
- Personal property, see Mortgages
- Physicians, register of, 15
- Pistol toters' application and bond
 original, 47
 record of, 51
- Pleadings, see Case papers and
 pleadings
- Pony homesteads
 petitions for, 41
 record of, 46
- Poor, see Public welfare, depart-
 ment of; Relief of poor
- Population, Echols county, 7
- Prison record, 69
- Probate, see Estates
- Proceedings, see Minutes
- Professional registration, doctors,
 15
- Property, see Deeds; Estates;
 Land records; Mortgages;
 Taxation
- Public schools, see Education,
 board of; Pupils; Schools,
 superintendent of; Teachers
- Public welfare, department of,
36, 37
See also Relief of poor
 records of, 87-99
 location of, 12
- Pupils
See also Education, board of;
 Schools, superintendent of
 enrollment attendance, 85
- Real property, see Deeds; Land
 records; Mortgages
- Receipts
 cash book
 county, 3

Index

- Receipts (continued)
 school, 79
 tax, 74
 welfare, 99
 Recorder, see Superior court clerk
 as ex officio county recorder
 Records, housing, care, and accessibility of, 11, 12
 Registers
 decrees of title, 10
 physicians, 15
 pistol toters, 51
 special tax, 49
 text book, 85
 title, 11
 whiskey, 50
 Registrars, county, 33
 Relief of poor
 See also Public welfare, department of
 applications, 89
 cases, 87
 index to, 88
 financial records, 97-99
 investigations, 90, 91
 special assistance, 92-96
 Reports
 auditor, 5
 school
 annual, 84
 principals', 82, 83
 teachers', 81
 Returns
 See also Estates, representatives of
 taxpayers
 county, 70
 school, 86
 Road commissioners, 37

 Sales
 estate property, 39
 sheriff's, 67
 Schools, superintendent of, 34, 35
 See also Education, board of;
 Pupils; Teachers
 records of, 79-86
 location of, 12
 Sheriff, 31
 records of, 66-69
 location of, 12
 Slaves, number of, 6
 Soldiers, pensions, Confederate, 49
 Solicitor general, 22
 Soil conservation, 101

 Special tax, register of, 49
 Spirituous liquors, register of, 50
 Students, enrollment, 85
 Subpoenas, see Dockets, subpoena
 Superintendent of schools, see
 Schools, superintendent of
 Superior court and clerk, 20-22
 records of, 16-30
 location of, 11
 Superior court clerk as ex officio
 county recorder, 18-20
 records of, 6-15
 location of, 11
 Surveyor, county, 37, 38

 Tax
 assessors, board of, 32
 collector, 32, 33
 records of, 73-77
 location of, 11, 12
 receiver, 31, 32
 records of, 70-72
 location of, 12
 Taxation
 applications for exemption from,
 71, 72
 cash book, 75
 digests, 73
 execution docket, 76
 receipts, 74
 register of special, 49
 returns
 county, 70
 school, 86
 Teachers, reports, 81
 Title, see Land records
 Tobacco record, 100
 Trade name affidavits, 13
 index to, 14
 Treasurer, 33

 Valdosta Times, The, 57
 Vital statistics, see Births;
 Deaths; Marriages
 Voters, list of, 30, 77
 Vouchers, county, 4

 Welfare, see Public welfare, department of; Relief of poor
 Whiskey, register of, 50
 Widows' year's support, record of,
 39
 Wills
 original, 33
 record of, 32

PUBLICATIONS OF THE GEORGIA HISTORICAL RECORDS SURVEY

1. Inventory of the County Archives of Georgia, No. 25, Chatham County (Savannah). Savannah, Georgia, 1938.
2. Ibid., No. 50, Echols County (Statenville). Atlanta, Georgia, 1940.
3. Ibid., No. 81, Jefferson County (Louisville). Atlanta, Georgia, 1940.
4. Ibid., No. 121, Richmond County (Augusta). Atlanta, Georgia, 1939.
5. Inventory of Federal Archives in the States, Series III (The Treasury Department), No. 10 (Georgia). Atlanta, Georgia, 1939.
6. Ibid., Series V (The Department of Justice), No. 10 (Georgia). Atlanta, Georgia, 1939.
7. Ibid., Series VII (The Department of the Navy), No. 10 (Georgia). Atlanta, Georgia, 1938.

