

KENTUCKY KERNEL

CELEBRATING 36 YEARS OF INDEPENDENCE

Activists question motive for logging UK forest

By Blair Thomas
btthomas@kykernel.com

Despite opposition from environmental groups, UK plans to go ahead with a forestry research project that will commercially log more than 800 acres of Robinson Forest over the next 12 months.

The logging, which UK's Board of Trustees unanimously approved in 2004, will begin in the next month, said Scott Smith, dean of the College of Agriculture. With the start of the project nearing, local environmentalists have raised concerns that it will cause long-term harm to the forest's streams

and ecosystems.

Robinson Forest consists of nearly 15,000 acres of Eastern Kentucky land owned by UK and used for research, teaching and extension education.

Environmentalists, including Kentucky writer Wendell Berry and members of UK's Greenhumb, Kentucky Heartwood and Kentucky Waterways Alliance, are petitioning UK's Board of Trustees to stop the project, which will clear-cut about 10 percent of the forest's acreage.

Greenhumb will host a public forum about the logging plan tomorrow from 5 to 7 p.m. in room 102 of White Hall Classroom Building.

Berry suggested in a Sept. 4 letter addressed to Smith that instead of logging parts of Robinson Forest, UK should "send its forest scientists to places where sustainable forestry is being practiced in order to study what is being done."

"Though you have published 'Sustainable Management Guidelines' for Robinson Forest, you and your colleagues apparently are assuming that sustainable forestry actually does not exist, and that it can begin only with such a drastic experiment as you propose," Berry said in the letter, which he also sent to UK President Lee Todd, Board of Trustees members and envi-

ronmental group leaders.

E.O. Robinson donated the property to UK in 1923 and placed it under a trust requiring the forest to be used "for the purpose of agricultural experimental work and teaching, and for the practical demonstration of reforestation."

The logging proposal meets that requirement, Smith said in an interview.

"This plan is solely about research," Smith said. "That is the purpose of the property and what it has always been used for."

The project will measure the effects of logging on perennial streams, said Jeff Stringer, an extension forestry professor who has helped develop the

plan and obtain bids from logging companies.

Approximately 1,100 acres of Robinson Forest will be used in study, Stringer said, and about 800 of those acres will be logged.

"The size was dictated by research," Stringer said in an e-mail. "To this end, experimental units had to be large enough to contain a perennial stream."

UK will receive revenue from selling the timber to commercial logging interests. The university has not announced a winning bidder or the pro-

See Robinson on page A3

UK 42, ARKANSAS 29



Denaldia Jones hugs her godson, junior offensive guard Christian Johnson, after UK's 42-29 win over Arkansas on Saturday.

ED MATTHEWS | STAFF

CATS LEAVE HOGS HOBBLING

Woodson, Burton counter Razors' backs

By Eric Lindsey
elindsey@kykernel.com

FAYETTEVILLE, Ark. — Just call him the comeback kid.

For the second week in a row, quarterback Andre Woodson led a late fourth-quarter drive to lead No. 21 UK 42-29 over Arkansas on Saturday night in front of 74,015 fans at Donald W. Reynolds Razorback Stadium.

The win improved the Cats to their first 4-0 start since the 2002 season — and their highest poll standings since 1977. UK rose to No. 14 and No. 15 respectively in the Associated Press and USA Today Coaches polls released yesterday.

But Saturday's game was yet another Heisman-esque performance for Woodson, who completed his sixth career fourth-quarter comeback.

With the Cats (4-0, 1-0 Southeastern Conference) trail-

ing 29-21 with 11:40 left in the game, Woodson led the Cats on two consecutive drives to seize the lead. Woodson's 32-yard touchdown to wide receiver Keenan Burton with 4:02 left in the game gave the Cats a 35-29 lead and put an exclamation point on an offensive outburst in the dying minutes of the game in Fayetteville, Ark.

"I think the guys just try to do a good job of always staying calm," Woodson said. "We're going to be in some tough situations. We're still a team that's growing up, and there's a lot of big-time playmakers on this team."

But nobody was more big-time than Woodson. The senior quarterback finished the day 21-of-39 for 265 yards and two touchdowns, all while setting the NCAA record for most consecutive passes without an interception. Woodson's incomplete pass to tailback Rafael Little in

the second quarter broke Fresno State's Trent Dilfer's previous record of 271 consecutive passes. The record now stands at 296.

"That's a privilege," Woodson said of breaking the record. "It's a big honor to get your name put there. There's been some great quarterbacks, but nothing is possible without my teammates."

The Razorbacks (1-2, 0-2 SEC) looked like they were going to take control in the fourth quarter following a huge safety from Arkansas defensive lineman Fred Bledsoe. The two-point sack gave the Cats a 22-21 lead with 11:51 to play in the game and gave the ball back to Arkansas.

On the ensuing kickoff, tailback Felix Jones returned the kickoff 82 yards for a score, extending the Hogs' lead to 29-21.

See Football on page A4

UK catching up with SEC's elite teams

FAYETTEVILLE, Ark. — Darren McFadden and Felix Jones, Arkansas' razor-sharp backfield tandem, have rushed for 100 yards together in the same game six times in their career.

They did it again Saturday night against the Cats — in the first half.

For the game, they helped the Razorbacks amass 338 yards on the ground. So Arkansas won going away, handing UK its first loss of the season, right?



JONATHAN SMITH
Kernel columnist

No. In fact, the Cats went on the road and beat the defending Southeastern Conference West Division Champions 42-29 in front of the sixth-largest crowd in the deafening stadium's history.

See Smith on page A4

Mayor forms work group to combat game-day problems

By Leticia Janes
news@kykernel.com

As another UK football home game approaches, Lexington's new Game-Day Work Group is taking steps to battle problems in neighborhoods surrounding campus.

In anticipation of Saturday's game against Florida Atlantic, work-group members will distribute 1,000 flyers that provide an overview of city ordi-

nances to houses around campus on Friday.

Mayor Jim Newberry formed the work group Wednesday, a day after meeting with residents frustrated about the state of neighborhoods surrounding UK, according to a news release. Some concerns stemmed from the behavior of students following the Sept. 15 football game against the University of Louisville, while others were longstanding.

"It is not that kids shouldn't have fun — just keep all of the trash cleaned up to avoid problems, like being fined by your landlord," said David Jarvis, Lexington's director of code enforcement and Game-Day Work Group member. "Personal responsibility is the key."

Officials will also be on hand enforcing parking regulations and other city ordinances, Jarvis said. The group's ultimate goal is to educate

students and have a more effective presence in the community until conditions in neighborhoods improve.

"I have lived around campus for 10 years, and I am seeing neighborhood decay," said Anne Marie Stamatiadis, president of Seven Parks Associations, a neighborhood association. "The combination of UK and city officials should provide education

See Game Days on page A3

Cyclists discuss Lexington's bike future

By Azra Drjevic
adrjevic@kykernel.com

City and university leaders joined Lexington cyclists Friday morning at the UK Student Center to discuss ways to make the community more bicycle-friendly.

More than 200 people were present at the Lexington Bike Summit, where Lexington was named a 2007 bronze-level bicycle-friendly community.

The designation is part of the Bicycle Friendly Communities campaign, an awards program administered by the League of American Bicyclists to recognize cities and regions that encourage cycling, said Andy Clarke, executive director of the league.

Communities submit an application, and the league awards ranks of platinum, gold, silver, bronze or no designation.

While Lexington's bronze-level rank is a step in the right direction, the city "still has a long way to go," Clarke said.

Louisville was awarded a bronze rank in 2006, and Mayor Jim Newberry said he wants to see Lexington rise above its competition.

"I want to see us not just going for the silver, but going for the gold," Newberry said.

Newberry opened the summit with a speech that discussed issues facing cyclists in Lexington, including a lack of bike lanes and fear of accidents involving cars.

"We share the responsibility to work together to improve the city," Newberry said. "We are well aware that there are many safety issues to overcome."

While Newberry focused on cycling in Lexington, Bob Wiseman, UK's vice president for facilities management, talked about biking at the university.

"We really have some work to do around campus," Wiseman said.

UK is working with the city to make streets near campus like Maxwell and Limestone more bike-friendly, Wiseman said.

Making Maxwell Street safer for cyclists is the first priority, he said, and then Lexington and UK will focus on finishing the Maine Chance Trail that will link the Kentucky Horse Park and Coldstream Research Campus.

Kenzie Gleason, Lexington's bicycle and pedestrian coordinator, said annual city biking events — including Bike Lexington, a bike trek to Shakerstown and the MS 150 Bike the Bluegrass — helped the community achieve the bronze-level ranking.

Gleason also discussed funding for projects to further improve the safety and convenience of biking in the city.

Lexington currently has 19 miles of bike lanes and 10 miles of trails. Newberry allocated \$2 million in the city's 2007 budget for paved bike lanes, aiming to bring the mileage to 29.

The city will also add 12 miles of shared-use trails, Gleason said.

After the morning speeches, summit leaders hosted sessions on bike education and safety, health and activities.

UK's Wildcat Wheels, a free bike-rental program that began in 2004, also introduced six of 25 new departmental blue bikes available for faculty and staff to use on campus. The program now has 43 blue bikes equipped with a rack,

See Summit on page A3

SUDOKU

Go to www.kykernel.com for the solution

9			4	8				2
				6				
8	5				3			6
	8	4		9		5	6	
	9		6		5		1	
	5	3		1		9	2	
4		1				6		5
				2				
7			1		6			9

4puz.com

CRUSH YOUR CANS... NOT YOUR CARS.

Autobahn AutoBody Collision Center
Accepting all insurance claims.
170 Drexel Drive (2 miles from airport) 275-1922
ask about our EIC accident discussion program!

HOROSCOPES

By Linda C. Black

To get the advantage, check the day's rating. 10 is the easiest day, 0 the most challenging.

Aries (March 21 - April 19) Today is a 7 — Make the connections and choices required, but none of the other ones. There'll be new developments in the next few days. Leave many of your options open.

Taurus (April 20 - May 20) Today is a 6 — Your energy level is low, but that's nothing to be concerned about. When you figure out what you're doing, you'll spring into action.

Gemini (May 21 - June 21) Today is an 8 — Obligations interfere with sweet indulgences, for now. Be responsible and you'll be able to go out on a lark again, soon.

Cancer (June 22 - July 22) Today is a 7 — Odds are good you're not in the mood to work. You'd rather take a cruise to some distant romantic island. Remember? This is why you work.

Leo (July 23 - Aug. 22) Today is a 7 — You have a special aptitude for numbers now. Use this to get your financial affairs into order. Keep in mind the goal you've just set.

Virgo (Aug. 23 - Sept. 22) Today is a 7 — You're making a good impression and you're doing the job well. Now it's time for you to start giving the job away.

Libra (Sept. 23 - Oct. 22) Today is a 9 — There will be work involved. You won't be able to delegate everything. You may get your hands dirty. But, what the heck. The results will be worth it.

Scorpio (Oct. 23 - Nov. 21) Today is a 7 — This is an excellent day for snuggling, if you can find the time. Make a shopping list of things you'd like to buy for each other.

Sagittarius (Nov. 22 - Dec. 21) Today is a 7 — Others increasingly seek your counsel and advice. Don't let them pester you mercilessly; defend your private space. Hang out there tonight, with a slightly irregular relative.

Capricorn (Dec. 22 - Jan. 19) Today is a 7 — Treat yourself to a tool that will make your life easier. Then, allow your curiosity to lead you down a new rabbit hole. Make sure the tool is yours, not just a loaner.

Aquarius (Jan. 20 - Feb. 18) Today is a 7 — Say what's on your mind to a loved one who's asking for a commitment. The discussion that follows will be lively, but you can reach a compromise. Do this earlier rather than later.

Pisces (Feb. 19 - March 20) Today is a 7 — You're learning a lot, but you don't need to try to teach anybody yet. The concepts you're feeling are way beyond words anyway. Try music or color.

© 2007 TRIBUNE MEDIA SERVICES, INC.



THE DISH

A depressed Britney Spears is facing her darkest hour yet

By Joey Bartolomeo

As the cliché goes, when it rains, it pours. Or, in the unique case of Britney Spears, it unleashes a category 5 hurricane. On September 17, just eight days after her disastrous lip-synching performance on MTV's Video Music Awards, the singer took a one-two — and then a three and a four — punch that, even by Spears' standards, was particularly crushing. First, during a custody hearing at an L.A. county courthouse, testimony was offered by her ex-bodyguard Tony "Fat Tony" Barretto, who worked for Spears from March until he was fired in May. His attorney, Gloria Allred, said he filed a declaration with the court "on issues of nudity by Ms. Spears, drug use and safety issues involving the children postrehab." Then, her divorce attorney, Laura Wasser, left her. ("There comes a time when some fresh blood is necessary," Wasser tells Us.) Hours later, Spears' manager, Jeff Kwatinetz, bailed. ("Current circumstances have prevented us from properly doing our job," he said.)

Spears' long day, however, was not over: At 7:25 p.m., seen entering the Staples Center con-

WHY IS MOMMY SO SAD?

cert of one on-top-of-the-world Justin Timberlake, were Britney's mom, sister and her close confidante Alli Sims. Topping it all off: A news report that a contract hit had been put on Spears' ex-husband Kevin Federline sparked false Internet speculation that the pop star was trying to off her ex. Those reports, as the FBI told Us by evening, proved to be false.

Lonely Birthday

So where was Spears as the hurricane swirled? Ensnared at home, which, as of her September 13 move-in, is a \$9 million French Country-style gated estate in Malibu, California. Inhabiting the seven-bedroom manse: sons Sean, 2; Jayden, 1; and, at Spears' request, Sims, because, says a source, "Britney was really scared to be alone." Nowhere was that solitude more painfully apparent than at her sons' two birthdays that week. In stark contrast to their balloon-filled joint backyard celebration thrown by Federline on September 9, which was attended by Spears' parents (held while Spears was imploding on the VMAs), the singer found herself in a familiar position: solo and trying her best to cope.

A source close to Spears tells Us that "it wasn't until she re-watched the performance did she break down into complete and utter hysterics." And whether it was self-absorption, defeat, exhaustion or all of the above, on her sons' actual birthdays, celebrations seemed far from her mind. On September 12, Jayden's birth-

day — and six days shy of her ill-fated third wedding anniversary — Spears left her Beverly Hills home and headed to a three-hour custody meeting with Federline and his attorney at the office of Wasser. "Britney wants a peaceful ending" to their custody case, explains a source. "She's tired of the back and forth." Later on, Sims headed out alone to buy a Carvel ice cream cake. On Sean's second birthday two days later, the only noteworthy event at Spears' house occurred when Federline (who was driven by a bodyguard) dropped off the kids at 10:45 a.m. and visited for 30 minutes. There were no family members, catering trucks or decorations to be seen.

Impact on the Kids

"Dealing with the kids after they come back from Britney's is really hard on Kevin," says a Federline pal. "It takes him three days to get them back on any type of schedule."

As Us has previously reported, even as Spears' nannies try to maintain normalcy, the singer, according to a source who has spent time at Spears' home, often makes the boys stay up late so they sleep longer, gives them soda in baby bottles and parades naked at home in front of the staff. When the kids are cranky from no sleep, Spears becomes frustrated "because she hates it when they cry," says the source.

COPYRIGHT 2007 US WEEKLY

Monday Night Football
FREE Appetizers until they run out.
\$1 domestic drafts — \$4 pitchers

Today's Dish
Sponsored By: **CHARLIE BRONNIN'S** Restaurant and Lounge
816 Euclid Ave.
269-5701

PATIO OPEN

NO RAMEN TONIGHT!

Use your noodle and save.

\$6.99 MEDIUM 1-TOPPING
\$8.99 LARGE 1-TOPPING

ALL DAY. EVERY DAY.
No coupon required just a student I.D.

ORDER ONLINE
pizzahut.com

253-2111
Campus Delivery

Expires 5/31/08. Valid only at participating locations. Delivery areas and charges may vary. Delivery drivers carry no more than \$20 cash. Not valid on Stuffed Crust or with any other offers. © 2007 Pizza Hut, Inc.

NEW SWIMMING POOL
TANNING BEDS

we'll give you a reason to jump for joy!

\$399 PER BEDROOM

amenities:
- basketball court
- tanning beds
- hot tub
- individual leases

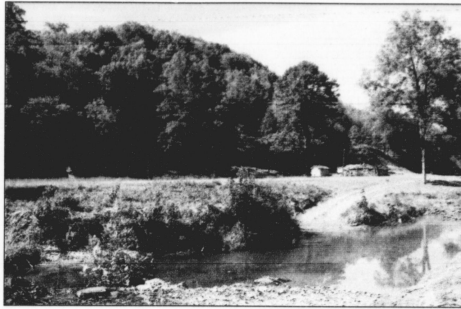
- new swimming pool
- fitness center
- tennis court
- volleyball court

THE COURTYARDS
845 Red Mile Rd | Lexington, KY 40504

collegeparkweb.com stop by, take a tour, sign a lease.

A3

Robinson Forest, 15,000 acres of land owned by UK in Eastern Kentucky, is the site of a commercial logging research project that local environmental groups oppose.
ALLIE GARZA STAFF



ROBINSON

Continued from page A1

ected value of the project. The study will consist of 10 sub-watersheds, drainage areas that feed into larger basins and eventually reach streams, with each test area being slightly less than 140 acres, Stringer said. Two of the areas will be used as controls and will not be affected, while the other eight will be logged.

Ann Phillippi, a biologist who graduated from UK and was president of Students to Save Robinson Forest from 1982 to 1983, said this approach to research will cause long-term damage to the forest's ecosystems.

"This specific research proposal fails to adequately explain that the slopes of Robinson Forest, especially in the areas where they propose to log, are very steep," Phillippi said. "When walking up the slopes from many of those streams, one can usually reach out and touch the forest floor from head-height without bending over."

"The watersheds are much too steep to log without destroying that fine, high-quality, old-growth forest ecosystem and the streams that traverse it."

Stringer acknowledges that the research will have some short-term effects on the basins but said it will not create lasting harm.

"These changes will not permanently impair the sub-watersheds from regaining their integrity over time," Stringer said.

"Streams in these water-

sheds will be little affected," he said. "All timber is being removed uphill, and no treatments or cutting will occur around the main branch of the primary watershed involved."

The Comprehensive Timber Management Plan, which the Board of Trustees passed unanimously in 2004, specified how the revenue from timber in the forest must be used.

Half of the first \$250,000 of the profit in a fiscal year must be used to maintain research infrastructure in the forest, according to the plan. The other half goes to the Robinson Scholars Program, which also receives money from private donations, Smith said.

Of the remaining profit, 40 percent must go toward supporting research and education in the forest, with the remaining 60 percent going to the scholarship, which supports first-generation college students from Eastern Kentucky.

Some opponents of the logging plan question UK's financial motives.

"We are concerned with the apparent dependency that the university has on timber profits to support the scholarship fund," said Jason Flickner, water resources program director for Kentucky Waterways Alliance.

"While maintaining the Robinson Scholars Program is important," he said, "KWA is concerned the capital generated through the currently proposed logging project will only supplement the scholarship's budget for a minimal duration, and future logging and potential mining proposals will be brought

forward for revenue generation."

Berry said he had similar concerns.

"We must assume that the proposed clear-cut is not an alternative to strip mining, but instead is the first step in a business plan that will culminate in strip-mining," Berry said in the letter to Smith.

"I feel sure, and for good reason, that the pressure on the forest is not scientific but financial," Berry said.

Concerns about mining Robinson Forest are unfounded, Smith said.

"There has been implication recently that this research project is an attempt to mine Robinson Forest," he said. "There is no plan to mine. In my opinion, this position is a false issue."

In 1991, UK approved mining in 5,000 outlying acres that E. O. Robinson donated along with the forest's central block. The proceeds from that mining were used to establish the Robinson Scholars Program in 1995.

Todd told UK trustees in 2003 that he had "no interest in pursuing mining of coal reserves in the main block of Robinson Forest," according to a Sept. 16, 2003, news release.

The board voted in 2004 not to allow mining on the 10,000 acres of the forest's central block in Breathitt, Knott and Perry counties, Smith said.

"As far as I'm concerned, that option is still off the table," he said. "It was the decision of the Board of Trustees in 2004 not to allow mining on the main block. That has not changed."

GAME DAYS

Continued from page A1

(about the matter) to encourage students to be more resident-friendly."

Lexington's Town & Gown Commission will also work to identify the causes of and solutions to code violations in neighborhoods near UK, Newberry said in a press release.

Stamatiadis, who coordinated Tuesday's meeting, said she will continue representing neighborhood concerns and working toward a solution by attending Town & Gown meetings and encouraging other neighbors to do the same.

Newberry also spoke with UK President Lee Todd to examine the issues comprehensively, UK spokesman Jay Blanton said. In connection with its community-engagement program, UK will find

ways to collaborate more with both the Town & Gown Commission and the Game-Day Work Group, Blanton said.

"The institution expects students to act in a civil manner," Blanton said. "We share the space with many people, and it is incumbent upon students to be sensitive towards their neighbors."

Many UK students who live in the targeted areas have been involved with the issues whether they participate in partying or not.

"I don't think UK is to blame — partying still happens when it is not a big game weekend," said Megan Wimpy, an agriculture communications junior and resident of Waller Street. "The neighborhoods are college housing, and with that comes the parties."

Residents and students can attend Town & Gown Commission meetings on the third Wednesday of every month at 4 p.m. at the Maxwell Presbyterian Church.

SUMMIT

Continued from page A1

basket and lock available for reservation by individual departments.

The 25 new bikes were funded by a \$9,000 donation from TIAA-CREF, a financial services company. The donation has also gone toward equipping

the bikes with racks, baskets and locks, providing continued maintenance, and helping pay a Wildcat Wheels employee.

The bikes are ideal for short trips and meetings across campus when driving or walking would be less convenient, said Ryan Wagoner, men's programming director at the Violence, Intervention and Prevention Center. Wagoner was one of the six UK employees to pick up

his blue bike at the summit.

Shane Tedder, head of Wildcat Wheels, said the departmental blue-bike program provides the opportunity for employees to use a bike during the work day no matter where they live.

"It allows them to increase their physical activity and provide a strong example for students who see professors using bikes as a mode of transportation," Tedder said.

www.kykernel.com

The Kernel
The Kernel
The Kernel
The Kernel

Your source for daily news, entertainment, sports, opinions and culture.

Get Connected with UKFCU!

Join now and have a chance to win one of four prizes!*

- ✓ Toshiba Laptop (software included)
- ✓ Magellan GPS Navigation System
- ✓ Samsung Camcorder
- ✓ Nikon Digital Camera with SD Memory Card

*Must become a new member between September 17, 2007 and October 31, 2007. Prizes given away through random drawing. Restrictions may apply. Log on to www.ukfcu.org, call 855-364-0255, or visit any of our branches for details.

UNIVERSITY OF KENTUCKY FEDERAL CREDIT UNION
800-264-0255 www.ukfcu.org

I AM A HEALTH CARE PROFESSIONAL

AGAINST CHILDHOOD CAVITIES, UNMET DENTAL NEEDS, AND BABY BOTTLE TOOTH DECAY.

I AM THE

U.S. Public Health Service Commissioned Corps

In the battle against disease, the Nation needs a powerful weapon. When you join the officers of the U.S. Public Health Service Commissioned Corps, you join an elite group of health professionals dedicated to meeting the needs of underserved populations and improving the health of Americans. Whether providing patient care, conducting vital research, or responding to urgent public health challenges like hurricanes and other natural disasters, the physicians, nurses, dentists, pharmacists, and many other professionals of the Commissioned Corps are there—protecting, promoting, and advancing the health and safety of the Nation. Join the fight for public health. Join the Corps.

AMERICA'S HEALTH RESPONSE COMMISSIONED CORPS

To learn more about a career in the Commissioned Corps, visit www.usphs.gov or call 1-800-279-1605.

Office of Student Activities, Leadership & Involvement
WWW.UKY.EDU/CAMPUSCALENDAR
CAMPUS CALENDAR
VISIT THE WEB SITE FOR EVENT DETAILS OR TO POST YOUR OWN UK EVENT.

The Campus Calendar is produced by the Office of Student Activities, Leadership & Involvement. Registered Student Orgs. and UK Dept's. can submit information for FREE online ONE WEEK PRIOR to the MONDAY information is to appear. Call 257-8867 for more information.

Monday 24 th	Tuesday 25 th	Wednesday 26 th	Thursday 27 th	Friday 28 th	Saturday 22 nd
<ul style="list-style-type: none"> • UK's Next Top Comic 8:00p.m., Center Theater • Health Occupation Students of America Meeting 7:30p.m., Student Center • Creation vs. Evolution: The Evidence and Implications 7:00p.m., Worsham Theater 	<ul style="list-style-type: none"> • Cheap Seat Tuesdays-Ocean's Thirteen 8:00p.m., Worsham Theater • Ballroom Dance Lessons 8:30p.m., Barker Hall Dance Studio • The Final Word-Dr. Woodrum 6:00p.m., W.T. Young Library 	<ul style="list-style-type: none"> • Comedy Caravan 8:00p.m., Cats Den 	<ul style="list-style-type: none"> • Laughs on the Lawn-Arvin Mitchell 8:00p.m., Memorial Hall Amphitheater • Getting the Scoop on Graduate School 3:30p.m., James W. Stukert Career Center 	<ul style="list-style-type: none"> • The Late Night Film Series Presents: Sludge 8:00p.m., Center Theater • United Worship Service 7:30p.m., Memorial Hall • FUSION 2008 COMMITTEE CHAIR APPLICATIONS DUE 	<p>Sunday 23rd</p>

SPORTS

J.D. Williams
Asst. Sports Editor
Phone: 257-1915
jwilliams@kykernel.com

Cats scoreless, remain undefeated

By Kenny Colston
kcolston@kykernel.com

LOUISVILLE — Although the scoreboard was left unchanged, the UK women's soccer team protected its undefeated record yesterday, tying rival Louisville 0-0 in double overtime at Cardinal Park.

The Cats (6-0-2) were out-attacked the entire match but preserved their record behind solid goalkeeping by freshman Sydney Hiance.

"They had one real dangerous play (in the first half)," head coach Warren Lipka said. "But Sydney made an incredible save."

Yesterday's performance extends UK's dominance over intrastate teams, with the Cats boasting a 15-1-2 all-time record. UK's only loss to another Kentucky school was a double-overtime loss to U of L last year.

UK's overall record against U of L is now 5-1-1.

Even with the score tied at zero, U of L (6-1-1) dominated the attack in the first half,

outshooting UK in total shots 9-2 and in shots on goal 4-1. Freshman forward Laura Novikoff's fifth-minute header was UK's only shot on goal in the first half.

Hiance recorded three saves in the first half, but the Cards had multiple close calls, including a shot in the 25th minute when Hiance narrowly blocked a shot that U of L forward Shannon Smyth lined from only a few yards away.

U of L midfielder Monique Gijni lined a free kick just over the crossbar a few minutes later, keeping both teams scoreless.

After playing on their heels for most of the first half, the Cats opened up the second half pushing for an offensive surge.

Senior midfielder Megan Jones fired a shot that was barely deflected by Louisville goalkeeper Joanna Haig less than 30 seconds into the half. The Cats controlled the ball more effectively in the second half, even though they were out-shot on goal.

"Toward the second half we had a couple of chances," Lipka said. "We con-

trolled overtime and was able to use our bench."

Hiance was confident in UK's play against Louisville and said the Cats accomplished what they needed to.

"The effort was there, and that's what we were looking for," Hiance said. In overtime, the Cats were constantly pressing the U of L defense, tallying two shots in each overtime.

Jones led the Cats with two shots on goal, while Hiance totaled seven saves. U of L was led on offense by Smyth, who had three shots on goal, while goalkeeper Haig kept the Cats off the scoreboard with three saves for the game.

"We're satisfied (with the tie)," Jones said. "We did everything we worked on and dominated the second half and overtime."

Most of all, the Cats are relieved to remain undefeated on the season after an all-out match against the Cards.

"Definitely on their turf we're happy to still be undefeated," Jones said.

FOOTBALL

Continued from page A1

But Woodson and the Cats stormed back. Injuries to running backs Rafael Little and Alfonso Smith gave way for fourth-string running back Derrick Locke to enter the game.

The true freshman carried the ball three straight times to end the Cats' following drive, scoring on a 2-yard touchdown run to cut the deficit to 29-27 after a failed 2-point conversion attempt.

"(Locke) did a great job," Woodson said. "The second he walked in the game, I told him, 'You're definitely from high school, but it's time to grow up, you got to be a man right now. We need you really bad.'"

With the Hogs barely hanging onto the lead and the Cats threatening on the Arkansas 32-yard line, Woodson used a set of audibles to draw the Hogs offside. When Woodson realized the Arkansas defender had fallen for the bait, he had a free play and lofted a bomb into the end zone for Burton, his No. 1 target.

"He had a lot of room, and he just trusts me," Burton said. "I just told myself and tell him

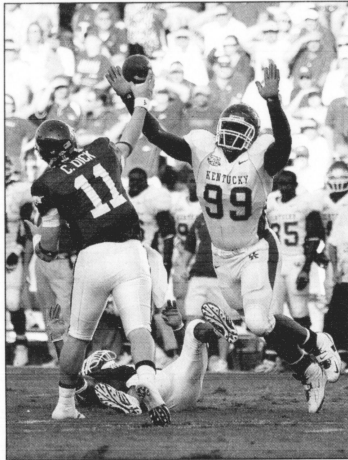
that I'm not going to let him down. If he throws it up, I'll make sure I come down with it."

Woodson and Burton's heroics almost never had a chance after the first half. The Arkansas running-attack duo of Jones and Heisman hopeful Darren McFadden trampled the UK defense, running for a combined 235 yards in the first half.

The Cats were fortunate, though, when Arkansas tailback Michael Smith fumbled the ball with less than a minute to go in the first half. Cornerback Trevard Lindley scooped the fumble at the UK 34-yard line and ran the turnover back 66 yards for a score to put the Cats behind just 20-14 despite being outgained by more than 200 yards in the first half.

"That game was close to running away from us," Woodson said. "If Trevard didn't get that fumble and scoop it up and score, I think the game would have definitely turned out in a different direction."

"With everything that went wrong, and a lot went wrong tonight — we had a lot of critical penalties, we had some key turnovers — this team found a way to win on the road in a tough place to win against a good football team," head coach Rich Brooks said.



ED MATTHEWS | STAFF

Sophomore defensive end Jeremy Jarmon dives to block a pass from Arkansas quarterback Casey Dick during the first half of Saturday's 42-29 win over the Razorbacks.

sprained his ankle and left the game early; Jason Leger reinjured his shoulder and was unable to stay in the game; Paul Warford left with a back injury.

If you were counting, three of those players were running backs.

The funny thing is, the Cats put a bigger emphasis in the second half on running the ball. Even with a fourth-string running back — and, to be sure, Derrick Locke is no slouch at all — the Cats ran the ball 28 times after halftime while attempting only 19 passes. Nine of those carries were by Locke, who ran for 48 yards.

As a team, the Cats gained 162 yards on the ground in the second half. In the first half, with only Little running the ball, the Cats gained just eight yards.

How's that for depth? "It's clearly obvious this team has some," Brooks said. "We haven't had that in past years. If we hadn't had it, we would have been on the other end of the score tonight."

They weren't, but it was surprising they left Donald W. Reynolds Stadium with a win.

Any previous UK team would have folded with the way the fourth quarter began.

Quarterback Andre Woodson was sacked in the end zone for a safety. The ensuing kickoff was returned 82 yards by Jones for a touchdown. The Cats' hopes looked about as empty as an ice-cube tray

in a house of college kids. But not these Cats. Even after Woodson missed a wide-open Dixon streaking toward the end zone on the drive after the kickoff return, the Cats found a way.

Even after missing the two-point conversion after they pulled within 29-27 — behind the legs of that fourth-string running back, mind you — the Cats found a way.

"Times are hard right now," said Arkansas offensive lineman Fred Bledsoe. "Sometimes you lose, and you just have to get over it. We worked hard and had the game won, but we let ourselves down in the fourth quarter."

That's something a UK player would have said a few years ago. But not now.

For the second straight week, the Cats gave up a kickoff return for a touchdown that gave their opponent the lead. They rallied to win that game too.

It's because they have a quarterback who led them to a second straight fourth-quarter, come-from-behind victory. He's done it six times now in his career. He hasn't thrown an interception since that win over Georgia, and he hasn't thrown a fourth-quarter interception in two years.

He's as good as anybody in the nation. And his teammates, despite playing sloppy football, are showing they're just about caught up to everyone else too.

Jonathan Smith is a journalism senior. E-mail jsmith@kykernel.com.

SMITH

Continued from page A1

How did the Cats do it? Because they've caught up to nearly every other team in the league in talent.

They've proved that in back-to-back seasons by knocking off the defending SEC champions (Georgia last year) and half of the participants in the 2006 SEC title game (Arkansas last night). They'll get their shot at Florida in a few weeks.

That's pretty good for a team that punctured seven times and lost three fumbles but still scored 42 points Saturday night.

"With everything that went wrong, and a lot went wrong tonight — we had a lot of critical penalties, we had a few turnovers — this team found a way to win on the road in a tough place to win against a good football team," head coach Rich Brooks said.

Brooks' laundry list of injuries after the game told the story of how far the Cats have come.

Sam Maxwell had a thigh bruise; Trevard Lindley played just one play in the second half after injuring his ankle; Rafael Little had a thigh bruise and didn't play much in the second half; Tony Dixon hurt his shoulder and sat out a better part of the second half; John Connor couldn't finish because of a stinger; Alfonso Smith

SPORTS BRIEFS

Britenriker leads raid in SEC sweep

The Cats' big three of Nicole Britenriker, Queen Nzenwa, and Sarah Rumely were too much for Auburn yesterday as UK won the match 3-1 (30-23, 30-32, 30-25, 30-27), improving to 12-3 on the season.

Britenriker led the Cats offensively with a season-high 20 kills. Nzenwa tied her season best with 18 kills, and Rumely nearly had a triple-double, with 53 assists, nine digs and nine kills.

Since UK won Friday's match against Georgia in Athens, Ga., the victory yesterday was the polishing touch on the Cats' sweep of SEC opponents over the weekend. UK beat the Bulldogs 3-1 (30-6, 30-24, 23-30, 30-20). Britenriker was the driving force against Georgia also. She set her season-high in kills, only to break it two days later.

UK is 3-1 in conference play. The Cats will host Tennessee on Wednesday night in their annual match against the Volunteers.

Men's tennis falls after big opening round

UK senior Will Ward (No. 90) won his match in an upset fashion against Jean Yves Aubone (No. 70) of Florida State during the opening round of the Southern Intercollegiate Championships in Athens, Ga. Junior Bruno Agostinelli (No. 44) also won his opening round match. Neither advanced past the second round. Ward lost to Wake Forest's Steve Froman, and Agostinelli withdrew for the tournament.

Kentucky freshman Brad Cox won his

first-round consolation match against Matt Brewer of Tennessee. The UK doubles of Cox and Ward lost to Middle Tennessee State's Novak and Peers in the first round.

Men's soccer loses close games

UK only gave up two points this weekend, but it wasn't enough to push them past Eastern Illinois and Akron. The Cats lost 1-0 in both games, bringing their record to 1-5-2 on the season.

In five of the Cats' last four games, they have held opponents to only one goal but were unable to pull ahead to win the game, finishing in ties to Michigan State and Cleveland State and losses in last weekend's games.

THE HIVE
A SALON & ART HAUS

FEATURING 100% VEGAN
PUREOLOGY PRODUCTS
&
AMMONIA FREE COLOR

156 Deweese Street • Lexington, KY 40508
859.243.8545

Wednesdays 25% off Services for UK Students with Valid UK I.D.

Kentucky Class Notes
Helping You Succeed in the Classroom

Call (859) 252-NOTE!

LECTURE NOTES

ANT 160 Bonzani
 BIO 102 Krupa
 BIO 152 Palmer
 BIO 325 Sargent
 CHE 104 Ades
 CHE 105 Holler
 CHE 105 Holmes
 ECO 202 Bo Jaling
 ECO 201 Barrus
 ECO 201 Gulla
 GEO 152 Keathly
 GLY 110 Fryar
 MGT 301 Holthein
 PS 101 Rice
 PSY 215 Friedrich

Next door to Ramsey's
on E. High St.
Call (859) 252-NOTE!
Kentuckyclassnotes.com

Don't Get Caught Without it!

Come learn about health insurance and the UK student plan.

Tuesday, September 25
5:45-7:00 pm
Student Center
Worsham Theater

Presented by The Chickering Group
Sponsored by SHAC &
Graduate Student Congress
Free Pizza 5:30

FEATURES

Meghan Cain
Features Editor
Phone: 257-1915
mcain@kykernel.com

Storyteller gets up close, personal Monthly series brings songs and tales to Natasha's Cafe tonight

By Whitney Waters
waters@kykernel.com

Students can get an intimate exposure to the growing art of storytelling tonight. Louisville native Thomas Freese will be performing a mixture of songs and stories in the latest installment of the Wandering Storytellers series tonight at 9 at Natasha's Cafe.

Freese will perform humorous, homespun tales from his childhood and his experiences traveling the world, he said.

"I want to advertise storytelling in Kentucky," Freese said. "But I'm not like a banjo-picking, Appalachian kind of guy."

Wandering Storytellers, formed from a partnership between Natasha's Cafe and the Kentucky Storytelling Association, takes place on the last Monday of every month.

"It's so personal," said Tara Atkins, the

director of public relations, marketing and booking at Natasha's. "It is almost like a conversation with a new friend."

The series helps KSA raise money, provides a venue for the storytellers and brings more business to Natasha's, said Betsy Fleischer, KSA program chair.

"All in all, we all get something out of it, and it is a wonderful experience," Fleischer said.

The series began this year when Brad Woods, a Canadian storyteller, contacted Natasha's for a performance. After that, Natasha's decided to continue to provide a venue for storytellers, Atkins said.

"It was this amazing thing, and we wanted to start a series," Atkins said. "It is a great night for comedy and for people to

"I want to advertise storytelling in Kentucky. But I'm not like a banjo-picking, Appalachian kind of guy."

THOMAS FREESE
Louisville storyteller

a personal level," said Atkins. "It's beautiful."

Natasha's is located downtown at 112 Esplanade, and tonight's storytelling event costs \$5. Call 259-2754 for reservations.

hang out."

Storytelling connects people from all generations, Fleischer said.

"Stories can help you realize that you are not alone and that people have faced what you face," Fleischer said. "When all else fails, everyone has a story."

The stories that are told are funny, anecdotes that are geared toward adults, Atkins said.

"Storytellers touch the community through this art form, and it's scaled down to

The sounds of nostalgia: Old electronics enjoy a sweet place in owners' hearts

By Paula Lody
McClatchy Newspapers

FRESNO, Calif. — Today, music is measured in gigabytes, and you can carry thousands of tunes in a device the size of a deck of cards or even smaller.

But some people still tune in to a simpler time, when music flowed from radios housed in polished wooden cases that sat on shelves or were as big as a small dresser.

Vintage radios take some collectors back to their childhood, when the family gathered around the radio in the living room to listen to news, concerts, mysteries and comedies.

What grabs other collectors isn't the nostalgia, but the simplicity of the technology. Back then, radios ran on vacuum tubes, sealed glass bulbs that helped make the radio work.

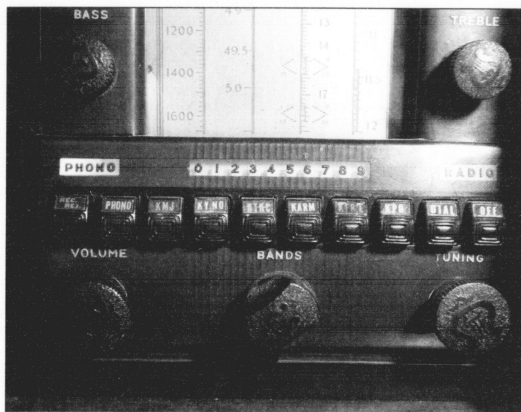
"The fascination for me is that it's simple enough that I can understand it and can actually work on it," said Harry Bohi, 39. In his Atwater, Calif., home, he has about 100 vintage radios — a small part of a collection amassed by his father, including many from the 1920s.

"I got started in it because I wound up with it," Bohi said of the collection his father no longer can care for. But the more he learned about what he had, the more interested he became, and it has become a satisfying hobby.

For Bob Wiens, it's the nostalgia. As a boy growing up in Nebraska in the 1940s, his fascination with radio often put him at odds with the telephone linemen.

Wiens and a cousin strung wires over the telephone lines between their houses, hooked them to crude transmitters and tapped messages to each other in Morse code.

"The linemen would come and rip off the wires, and we'd have to string them again," Wiens, 77, said with a laugh.



ERIC PAUL ZAMORA / FRESNO BEE

Push buttons on a 1939 Capehart Deluxe console radio phonograph are shown. Bob Wiens has been collecting, repairing and playing radios and phonographs since he was 9 in Clovis, Calif.

A boyhood spent "messing around with radios" led to a career in electronics and a retirement hobby collecting and restoring vintage radios and phonographs.

Wiens, who owned one of the Modern Radio and TV stores in San Jose, Calif., had a few old radios, but his serious collecting began after he retired in 1989 and moved to Fresno with his wife, Mary. They searched for vintage radios and phonographs on their travels around the United States in their motor home.

"We just hit all the antique stores," Mary Wiens said. Today, their home is filled with 200 vintage radios.

The Wiens' vintage radio and phonograph collection starts in their entry hall.

"These were only made for four or five years," Bob Wiens said, opening the front of a 1938 Capehart console phonograph. "Its claim to fame is that it turns the records over."

He turns on the player and a black record drops from the bottom of a circular metal frame that holds a stack of records. The tone arm falls into place, and waltz music floats down the tiled hallway.

Just a few feet away is a 1927 RCA Victrola phonograph in a cabinet decorated with dark and light inlaid woods.

"This sold for \$975 then," said Wiens, as an old recording of "Ah! Sweet Mystery of Life" plays. That was more than two Model T Fords, he said. The car cost \$380 in 1927, according to the American Society of Me-

chanical Engineers.

Dozens of radios and phonographs, from humorous to historical, line shelves in the Wiens' living room. There's an Edison Standard phonograph from about 1900 with an original wax cylinder recording of Edison's voice. Across the room is a gold and white metal radio shaped like an owl, with dials for eyes.

Wiens converted the mother-in-law suite in their home into a workshop where he's restoring a 1937 Philco radio, removing the rust from metal parts, replacing wiring and vacuum tubes from his collection of nearly 3,000 tubes. That's not really a lot, he said. Some collectors have many more.

"If I don't have one, I know how to get one," he said.

Kentucky Fertility, Obstetrics & Gynecology, PLLC.

George M. Veloudis Jr., D.O., FACOG
Deborah A. French, PA-C, MSPAS
Mincha Parker, RNC, MSN, ARNP

Specializing in Comprehensive Women's Health Care

Call for an appointment:
1417 N. Eagle Creek Dr.,
Ste 203
Lexington, Ky
(859) 263-9600

Parisienne
Ladies Boutique

15% OFF any 1 item (necklace or earrings)
Expires 10/31/07

(859) 231-8122
Civic Center Shops (Rupp Arena)
410 W. Vine St.
Lexington, Ky 40507

ISLAMIC PHILOSOPHY AND THEOLOGY TODAY

INTERNATIONAL GRADUATE STUDENT CONFERENCE

28 - 30 SEPTEMBER 2007

PATTERSON OFFICE TOWER 18th FLOOR

Open to the public
For more information visit
www.dialogueuk.org

UK
UNIVERSITY OF KENTUCKY
Interfaith Dialogue Organization • College of Arts and Science
The Graduate School • Department of Philosophy
Office of International Affairs

The world is waiting.
The next step is yours.

Fall II classes begin October 17

Get a leg up on your college career with Fall II eight-week classes at Bluegrass Community & Technical College. Call 859.246.6200 for information and class schedules, or visit our website at www.bluegrasskctcs.edu.

HIGHER EDUCATION BEGINS HERE

Bluegrass
Community & Technical College

KENTUCKY COMMUNITY AND TECHNICAL COLLEGE SYSTEM

please recycle the kernel.

Recycle the KERNEL

The Kernel is printed on recycled paper.

We do our part. Now do yours.

L.I.V.E.
LEARNING FROM INSPIRING VOICES WITH EPILEPSY

You're invited to a FREE program with the Epilepsy Advocates as they share their inspiring personal stories about epilepsy. Epilepsy Advocates are people who have taken control of their epilepsy and refuse to be defined by it. Hear a local neurologist share his expertise in treating epilepsy.

If you or someone you care about is living with seizures, this is your chance to:

- ➔ Learn More About Epilepsy
- ➔ Hear an Epilepsy Advocate's Personal Story
- ➔ Hear About Treatment Options
- ➔ Meet Others Living With Epilepsy
- ➔ Ask a Neurologist Your Questions About Epilepsy

Bring your friends, your family, and your questions. Take home a connection for others in your community and the inspiration to LIVE on your terms.

Call 1-866-865-7305 or visit EpilepsyAdvocate.com to reserve your spot today.

DATE / TIME: Tuesday, October 9, 2007
Registration: 6:30pm - Seminar Begins 7:00pm

LOCATION: Griffin Gate Marriott
1800 Newtons Plaza
Lexington, KY 40511

PHYSICIAN: Dr. Toufic Fakhoury

EpilepsyAdvocate
Strength in numbers

Light refreshments will be served
Free Parking & Admission

Look What's On Tap At

Pazzo's & Pazzo's Pub

Over 150 Bottled Beers!
Plus...
38 Beers on Tap!

Pazzo's New Patio Opening Soon! Now Hiring Servers!

Daily Pint Specials

Mon:	Spaten & Franz	\$2.95 Pints
Tues:	Sierra Nevada	\$2.50 Pints
Wed:	Kona Longboard Lager	\$2.50 Pints

Wittekerke Pint Night*

* 12 Witekerke pint glasses with every 10th order! While Supplies Last.

Pazzo's Pub - Open at 5 pm Daily!
255-5125 Corner of South Lime & Euclid

OPINIONS

KERNEL EDITORIAL BOARD

Keith Smiley, editor in chief
Brenton Kenkel, managing editor
Sean Ross, managing editor
Chad Reese, opinions editor
Lissen Li, assistant opinions editor

Chris DeLottoli, sports editor
Meghan Cain, features editor
Carrie Bass, columnist
Bryan Kennedy, columnist

The opinions page provides a forum for the exchange of ideas. Unlike news stories, the Kernel's unsigned editorials represent the views of a majority of the editorial board. Letters to the editor, columns, cartoons and other features on the opinions page reflect the views of their authors and not necessarily those of the Kernel.

■ KERNEL EDITORIALS

Enrollment drop should concern UK administrators

Student enrollment is down throughout UK this year, and only some of the drop is intentional.

UK purposely reduced the size of the freshman class this year to increase the student-to-faculty ratio. But it seems the rest of the classes followed suit.

For the 2006-07 year, UK's total enrollment was 27,209, including 4,190 freshmen. It was the largest freshman class in school history. This year, the freshman class shrank by 278 to 3,922 students, while the total enrollment dropped to 26,625 — a decrease of 584 students.

Of course, thousands of students graduate from UK each year, leaving an enrollment gap that is then filled by incoming freshmen. With a smaller freshman class, the total number of students at the university could drop some. But when the incoming class shrinks by about 300 students and the total enrollment drops by nearly 600, it's obvious there are other factors at play.

It goes to show that attracting a large, talented freshman class isn't enough. UK has to retain freshmen and make sure they earn degrees, too.

Reducing the size of the freshman class should help with keeping students at UK. Provost Kumble Subbaswamy said in a Sept. 17 Kernel article.

"It is important for us to focus as much, if not more, on retention

and graduation rates as on admissions alone," Subbaswamy said. "That is what we are undertaking."

Indeed, with more faculty members and fewer students, there is promise for improving freshmen retention. But UK officials must also remember that students drop out anytime, not just after their first year — something that drops in total enrollment seems to reinforce.

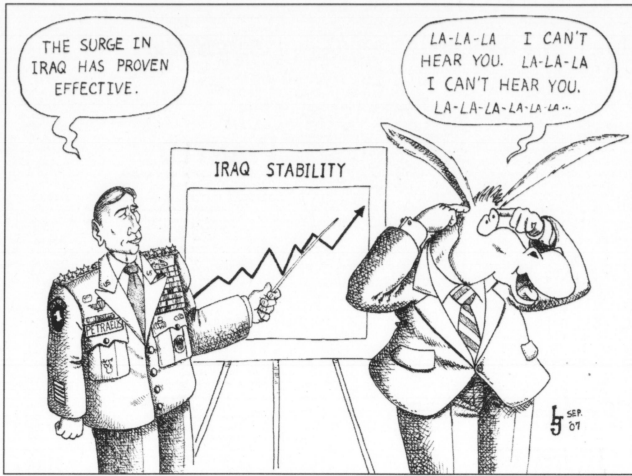
A student's freshman experience certainly plays a major role in whether he or she eventually graduates, but there is still a need for older students to be supported.

Part of the drop is also due to graduate students — there are 152 fewer this year, down to 5,714 from 5,866 last year — which Subbaswamy said is "largely cyclical." An unusually high number of master's and doctoral students graduated last year, he said, and UK is now "ramping back up."

An abnormally large graduating class is understandable, but UK should try to avoid having such a problem in the future by focusing on attracting and retaining more graduate students. Having more master's and doctoral students helps the university attain the enrollment goals of the Top 20 Business Plan, and those students also help UK in its research commitments.

The drop in total enrollment this year hardly indicates a downward trend that threatens UK's top-20 goals, but it does mean a year has passed without progress toward some of the measures.

UK officials must remember that students drop out anytime, not just after their first year.



BRIAN GOODLEY, Kernel cartoonist

Discount on controversial ad drags Times' ethics into question

When MoveOn.org ran its full-page "General Betray Us" ad in the New York Times, President George W. Bush called it "distinguing."



MEGAN VAZMINA
Kernel columnist

"I felt like the ad was an attack not only on Gen. David Petraeus, but on the U.S. military," Bush said in a press conference. These comments from the president in response to the attack on the top U.S. military commander in Iraq are almost expected, for after all, this is Bush's war.

Bush has been attacked constantly for the state of the war and the way it is being handled.

Republicans weren't the only ones upset by this advertisement. Sen. John Kerry, D-Mass., called it "over the top," and the Democratic-controlled Senate passed a resolution condemning the liberal group's ad.

I personally felt that even if there is disagreement over the Iraq war, suggesting someone as qualified as General Petraeus is going to betray this country is low.

But amid the political battle of this ad, whether you agree or disagree with MoveOn, there is one party that I think should be examined more signif-

icantly — The New York Times. I want to know how MoveOn got such a deal on this ad from New York Times. According to a MoveOn spokesman, the ad cost only \$65,000.

That's dramatically less than the opening rate for a full-page ad — about \$180,000, according to New York Times public relations director Abbe Serphos. MoveOn received a discount described as a "standby" rate, which means advertisers aren't even guaranteed the date they request.

But MoveOn got exactly the date it wanted, and at a fraction of the cost. The ad was meant to run on Sept. 11, prior to Petraeus' Congressional testimony about the Iraq war.

I think it's time for The New York Times to step up to the plate and give the American people a detailed explanation of how MoveOn managed to secure the correct date on a "standby" basis.

In a time when there have been media indiscretions and when plagiarism and false reporting are topics that must be discussed, it's important to understand the decisions of newspapers and the news organizations that run them.

When a paper of as much influence as The New York Times runs an ad like "General Betray Us," I would rather focus on MoveOn and the decisions it made rather than questioning whether there was bias of any sort during the publication

process. I wasn't easily reassured when I read the following quote by Catherine Mathis, The Times' vice president of corporate communications: "The rates are certainly things that have many different variables in them."

Instead, I'm going to continue to voice concerns, especially with articles like one in New York Post titled "Times Gives Lefties A Hefty Discount For 'Betray Us' Ad."

I think it's unfortunate that questions like this have to be raised. And now The Times seems to be facing the consequences of the ambiguous advertising costs because there are others, including presidential candidate Rudy Giuliani, who are requesting the same rate for their ads.

I haven't been convinced that this was a politically motivated move by the advertising department. On the other hand, I'm also not completely ready to remove the possibility.

It's unfortunate that questions like this have to be raised about a newspaper. Ideally, the advertising department would have nothing to do with the news content of a paper. But when a politically biased ad is run for far cheaper than normal, there should be no lingering questions about the process.

Megan Vazmina is a political science senior. E-mail opinions@kykernel.com.

Achieve true diversity; don't just think of race

While UK continues to publicize its quest for increased diversity among students and faculty, the university still seems to misunderstand the meaning of diversity and how it can be achieved.

The recently released UK 2007-08 preliminary enrollment numbers indicate that 6.6 of new freshmen are black, a slight drop from 7 percent in last year's freshman class.

At best, this statistic indicates stagnation in recruiting potential students from an African-American background. However, these numbers are only a measurement of the progress of one group.

A statement by Provost Kumble Subbaswamy in the Sept. 17 Kernel exemplifies the problems with UK's outlook on diversity.

"The number of African-American students is the second-highest in the institution's history, and African American enrollment is up overall at UK," Subbaswamy said. "That's a reflection of our commitment to diversity and I also think is illustrative of the success we've had in previous recruitment efforts for both diverse students and faculty."

First, the overall increase in black student enrollment was just 30 students, raising the number of black students to 1,419. It's good to see the number go up at all, but that's not much of an improvement.

Yet the most troubling problem lies in how UK views diversity. It is not logical to say that the fluctuations of one underrepresented population is indicative of the progress of overall diversity on campus.

Currently, UK appears to view diversity only in terms of two races: white and black. UK needs to recognize the common knowledge that there is more to racial diversity than just those two groups.

In addition, while race is an important component of a diverse campus, diversity is not just an issue of race.

Diversity is a complex term encompassing race, ethnicity, cultural background, class, religion, gender, gender identification, sexuality, age, physical and mental ability, and more.

A truly diverse campus would reflect all of these and other groups in proportion to their numbers outside campus.

UK continues to look in the wrong place as it focuses on the admissions process as the key to creating diversity.

Diversity can only truly be achieved by making UK attractive to a variety of people. UK should reevaluate how and where it is spending its money to better concentrate on the needs and desires of a diverse campus.

■ LETTER TO THE EDITOR

Senior football players deserve recognition

In the wake of the UK football team's impressive victories early this season, it's hard to think of a group more deserving of success and recognition than the seniors on the team.

Among other things, these seniors have dealt with disappointing seasons, the pressure of playing for their coach's job, devastating injuries and dwindling fan support. Through all these difficulties, they have always given 100 percent and have shown class both on and off the field. They have also been great ambassadors for the program, helping to market UK football and convince prospective recruits to come to UK.

When these seniors chose UK out of high school, they took a leap of

faith. UK was coming off probation and scholarship restrictions. These players knew rough times were ahead, but they firmly believed in the vision of Rich Brooks and his staff.

And now, after four years of hard work, unshaken loyalty and constant faith in themselves and their coaches, these seniors have put UK in the national spotlight.

These seniors are the closest group of players the football program has ever had to resemble the "Unforgettables" of our basketball program, and they deserve the respect and support of all Wildcat fans.

Paul Mattingly
Finance and broadcast journalism junior

New SG Senate project system already supporting campus activities

Greetings fellow UK students, faculty and staff. I trust that your semester has gotten off to a promising beginning. My name is Tyler Montell, and I am your Student Government Senate president this year.



TYLER MONTELL
Contributing columnist

SG has a fundamental responsibility to assist student organizations and groups in bettering not just the campus but also the lives of the students

here at UK. The 2007-08 SG budget allocated \$70,000 in student fees to the Senate for just that purpose.

Distributing the funding to the appropriate student groups and events is a great responsibility, and one I take very seriously. In order to handle this duty more efficiently and responsibly, we have implemented a new system.

In a Senate Special Project, as

we call it, a student senator adopts an organization's program or event and works alongside the organization to plan and implement the program or event with SG monetary resources.

The new system is also beneficial to organizations because the funds are not subjected to some of the limitations that other SG grants have.

Several organizations have already taken advantage of this new system, and I want to take this opportunity to highlight two of them.

Pink Goes Global, a program sponsored by Alpha Kappa Alpha Sorority and Sen. Kate Mudd, was held Sept. 14. As you may have read in a recent letter to the editor in the Kernel, it is an event we are all very proud of. The event was a great success, and we really appreciate the work of Mudd, Alise Marshall and all of the other fine young women of the Alpha Kappa Alpha Sorority.

Operation Send Support is an event sponsored by Honor Our Military Everywhere and Sen. Lauren Anker. The event will be held Oct. 10 from 7 to 11 p.m., so be sure to mark your

calendars. Large bins will be placed around Huggin Field, and students will have the opportunity to donate items for care packages to send to our soldiers overseas.

The goal is to gather enough items for 500 care packages, and the event will include music from WRFL, inflatable obstacle courses, eating contests, free pizza and a rock-climbing wall.

I would like to give special thanks to Andi Hilker and Erin Crux from HOME and Anker for all their hard work with this event. We look forward to seeing everyone out there.

Our goal is to spend a third of our overall budget on special projects like these, but we need your help to reach this goal. If your group or organization is interested in this program, please do not hesitate to e-mail me at wmontell@gmail.com or call my office phone at 257-3191. I can't promise we can fund every event, but I can promise we will do everything in our ability to help the student body achieve its potential.

Tyler Montell is UK's Student Government senate president. E-mail opinions@kykernel.com.

Cartoonists Needed

The Kernel is looking for a cartoonist to draw pieces for the Opinions page regularly. Those who have an interest in campus and local issues will be given special attention, although cartoonists of all interests will be considered.

E-mail opinions@kykernel.com

Submissions

Send a guest column or letter to the editor to the Kernel. Please limit letters to 350 words or fewer. Be sure to include your full name, class and major.

E-mail opinions@kykernel.com



Get a Grip on Your Thirst



buy a 20oz
Coca-Cola® classic,
Coca-Cola Zero™
or Diet Coke®
get one free



Coca-Cola
Get a Grip
on our NEW bottle

MANUFACTURER'S COUPON EXPIRES 10/31/2007

buy a 20oz Coca-Cola® classic, Coca-Cola Zero™ or Diet Coke® get one free



CONSUMER: Only one coupon per purchase. You pay sales tax and/or deposit charge. Coupon may not be assigned, transferred, sold or reproduced. Any other use constitutes fraud. Cash value 1/100¢ off 1¢.
RETAILER: We will reimburse you for the retail price of the specified product, plus the handling allowance, if you and the consumer have complied with our Coupon Redemption Policy available at the redemption address. Mail coupons to: CMS Dept. 49000, One Fawcett Drive, Dallas, TX 75240.
©2007 The Coca-Cola Company. "Coca-Cola," "Coca-Cola classic," "Coca-Cola Zero," the Contour Bottle design and the Dynamic Ribbon are trademarks of The Coca-Cola Company.

CASHIER: Enter retail price here: MAX. \$1.39

46844



5 49000 11014 7 181010 46844 1007

©2007 The Coca-Cola Company. "Coca-Cola," "Coca-Cola classic," "Diet Coke," "Coca-Cola Zero," the Contour Bottle design and the Dynamic Ribbon are trademarks of The Coca-Cola Company. For details on terms see www.cokerewards.com. Scan to help identify the 10/31/07 and 10/31/07 dates and other. Use where permitted.

KENTUCKY KERNEL

GREEK LIFE



Greek Week Events

Monday, September 24

10 a.m. - 2 p.m. "Wear Your Letters Contest" - POT
9 p.m. - 10 p.m. - "Picnic/Watermelon Eating Contest" - SAE/Sigma Nu Backyards

Tuesday, September 25

7 p.m.-9 p.m. "Greek God and Goddess Date Auction" - Memorial Hall

Wednesday, September 26

4 p.m.- 6 p.m. Kappa Kappa Gamma and Delta Sigma Phi

Thursday, September 27

4 p.m. - 6 p.m. "Fire Safety Relays" - Goodbarn Field
8 p.m. - 9 p.m. - "Crowded House Night sponsored by The Rock" - SAE Porch

Friday, September 28

4 p.m. - 6 p.m. "Chariot Races" and Greek Cornhole Tournament - Haggin Field

Saturday, September 29

12 p.m. Winners Announced- WT Young Library

Fellow Students and Greeks,

Greek Week has always served as a treasured tradition for UK students and university administrators. It offers a variety of activities in which Greek students come together to support a common cause and have a great time as a united community. The Inter-Greek Programming Assembly works tirelessly to put together events that everyone can enjoy.

Greek Week is one of the many ways UK Greek students can represent our organizations with pride and dignity as each chapter competes for the Greek Week Champion title. During this week Greeks give back to the Lexington community as well as support national organizations such as the Hurricane Katrina relief fund.

Although this week is very significant, it only begins to scratch the surface of what the Greek Community does for the University of Kentucky. Greek students not only excel in giving back to the community, they also are involved with various other leadership organizations on campus and are continually working hard in the classroom.

While Non-Greek students may be skeptical of Fraternity and Sorority life, this week should provide a great example of why it is so important to get involved with this historic population here at the University of Kentucky.

tucky.

The UK Interfraternity Council, UK Panhellenic and the National Pan-Hellenic Council join the members of the Inter-Greek Programming Assembly in wishing each and every chapter the best of luck in the coming week and hope that all students involved will take full advantage of the great opportunities Greek Week has to offer.

Sincerely,

Matthew W. Swafford
Alpha Tau Omega '05
IFC President

Brooke Perrin
Delta Delta Delta '04
Panhellenic President

Clayton Spiceland
Delta Sigma Phi '05
IGPA Chairman

THIS SECTION IS A PR SUPPLEMENT TO THE KENTUCKY KERNEL

Alisa Oerther
Coordinator/ Editing/Design

Jen Juliano
Design

Editing
Jillian Rogers

Reflecting Back

Wow, 1975 does seem a long time ago. Our war was just dwindling down and at eighteen I was just looking forward to paying my \$240 tuition and seeing a college football game. One other thing that caught my eye was the Greek system at school. After looking around, I received an invitation to associate with Phi Sigma Kappa fraternity. At my advanced age I now know that outside of my marriage to sweet Mary, this would turn out to be the most defining moment in my life.

As a freshman with long hair, shabby clothes (soon to be swapped out for disco then prep wear) and quite a few rough edges that need to be shaved down by my active brothers, I changed. I was transformed into a secure, self-assured and, in my opinion, a somewhat relevant member of this society.

Now I won't bore you with a trip down memory lane, except to say that winning the Chi Omega Greek Sing, growing our house to eighty members and beating those guys in the big new house on Rose Lane in flag football (only once) were all very special. But, what I remember the most was being Greek on this great land grant university. Becoming a member of any of our houses is a choice, a challenge and an incredible opportunity. I was very excited to attend the Phi Sig rush this August and see many of our alumni along with our active brothers. I also enjoyed traveling around to the

other tents and houses in the dwindling "four pack" and see how well we were all doing.

First and foremost we are a community. The similarities in our programming, our rituals and our caring for Lexington and our different philanthropies are very comparable.

As we all move through our Greek experience, from associate to active, to perhaps holding office and, in my case, lingering through five and half years, we share a bond through every organization large and small. Just sit and get a bite or an adult beverage in any major airport and

"We as Greeks are different, we are special and we need to shout it out loud. We are not cookie cutter automatons. We are Democratic, Republican, Catholics, Protestants, Jews and all faiths. We are white, black, Hispanic, Asian and everything in between. We are diverse and damn proud of it. We care for our men and women. We fight violence against anyone anyone and stand up for those oppressed."

say hello to the person sitting next to you. I can't tell you how many times the University of Kentucky or Greek involvement comes up. An automatic kinship takes hold and a new friend is made. Shared experiences.

I am so proud as a UK Greek to know the story the good men of Sigma Chi have to tell over the past four years. If you don't know it, ask them. The wonderful contributions that all of the Pan-Hellenic groups donate to so many charities can not go without notice.

Many of our local and state wide leaders are able to draw a straight line from their success to their involvement in our community. We as Greeks are different, we are special and we need to shout it out loud. We are not cookie cutter automatons. We are Democratic, Republican, Catholics, Protestants, Jews and all faiths. We are white, black, Hispanic, Asian and everything in between. We are diverse and damn proud of it. We care for our men and women. We fight violence against anyone and stand up for those oppressed. And yes, we create economic

opportunity for each other. All good!

Please be aware, we have some of the best chapters representing the best national organization on this campus. I know this for a fact. Sometimes we may feel small as an individual student on the acreage of this vast university, yet it is our relationship with our chapter and our community that call us home. I know that each chapter is a link and our chain is strong.

Now, my request. Stand up for each other. This Greek thing we do is very cyclical. My house in the past has fluctuated between one very motivated man in 1969 to well over one hundred brothers in the late '40s and '90s. Those chapters in 2007 who have a membership issue would truly benefit and be thankful for any positive reinforcement sent their way.

Believe me, things can change quickly and in a few more years your chapter might be the recipient of a kind word or a helping hand. We do this because we are all Greek, we attend the University of Kentucky for our education and we are good people.

I turned 50 last month and it does seem time for reflection. My absolute best friends are my chapter and Greek brothers from around the country. Know that our relationships will last a lifetime and pass all of those good tidings to your children.

After giving many speeches over the past ten years it is difficult to compose an article that doesn't sound as if I were preaching. I apologize for my style, but I believe everything in this short rambling. We are strong — and our Greek community will see the next century with the same purpose that each of our organizations was founded under.

Thank you,
Dave Spreitzer
Past National President Phi Sigma Kappa Fraternity
Active Alumni of the Phi Deuteron Chapter at UK

What is IGPA?

The Inter-Greek Programming Assembly is a group of students from each of the three Greek governing councils on campus — the Interfraternity Council, the Panhellenic Council and the National Pan-Hellenic Council. The group's ultimate goal is to ensure the quality of Greek-sponsored events on campus in which all chapters may feel proud to participate.

IGPA achieves this goal by reviewing event applications from chapters wishing to obtain the assembly's support. Each semester, eight events are chosen based on the event's agenda, charitable organization and overall student appeal.

Following approval from the assembly, IGPA works with the chapters to ensure that the rules and regulations are clearly stated, all necessary safety measures are observed, no drug or alcohol use is permitted, etc. By holding each chapter event to such high standards, IGPA hopes to exemplify the virtues of the Greek system while also unifying its members.

In addition to event programming, IGPA also strives to unify and promote the Greek community by planning Greek Week and Greek Service Week. Greek Week takes place every fall semester and

has recently included such events as Greek Gruffiti, a Greek-wide cookout, and Greek God and Goddess Date Auction. This semester, IGPA has decided to build onto last year's popular Chariot Race. The event will now consist of the Chariot Race and the Greek Cornhole Tournament, a new event.

In the spring, Greek Service Week takes place using a similar format to Greek Week. The week is focused on service and community involvement and is capped off with the annual Greek Awards Banquet. The year-ending banquet recognizes chapters and individuals for their hard work and commitment to the Greek system.



United Greek Community

For Greeks and non-Greeks alike, the three councils that govern Greek life at UK can be confusing.

The Interfraternity Council, or IFC, is the collective, organized body of men's social fraternities at the University of Kentucky. The Panhellenic Council is the organizational body of women's social sororities at UK.

The National Pan-Hellenic Council, or NPHC, is the Greek organizational body composed of the historically African American fraternities and sororities. Representatives from these three councils come together to form the Inter-Greek Programming Assembly, which regulates and schedules programming for the Greek community.

One might ask why all three councils are needed to govern Greek life at a university. IFC and Panhellenic Council have been active at UK for almost a hundred years.

However, in the 1990's, many of the historically African-American Greek organizations felt that they were in the minority and felt that their issues were not being heard. Because of that, in 1993, the National Pan-Hellenic Council was

founded at UK to give the historically African-American groups an equal voice within the Greek community and to provide more leadership roles for members of these groups.

The national organizations of the IFC, the Panhellenic Council, and the National Pan-Hellenic Council encourage campuses to have separate governing councils so each can set their own rules and better serve their respective members.

At UK, this has worked out well, as the councils work together on projects, issues, and task forces.

In the past few weeks, the relationship between these three governing councils has been a focus of much university attention. A few weeks ago an initiative was started by UK staff and students call the "Inter-Greek Relations Project." The project includes members from all three governing councils, IGPA, and UK staff and will serve as a unifying effort for the entire Greek community.

It is a very exciting time to be a UK Greek! Please join us for another step toward a united Greek community in a great week of fun — GREEK WEEK 2007 is here!

It's time to think Spring Break!

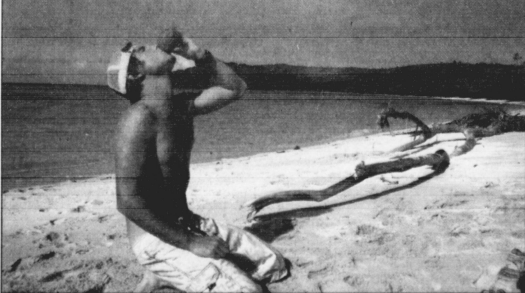
- Personalized Travel Advice
- Specially Priced Student Airfare
- Trips & Accommodations
- Travel Insurance
- Discount ID Cards
- International Rail Passes
- Online Visa Applications
- Foreign Currency Exchange
- International Cell Phones
- Student Travel Loans

10 + 1 = 10
When you book ten of your friends on any of our Spring Break '08 packages, the eleventh is FREE.
*restrictions apply

\$25 OFF
Air & Land SPRING BREAK Packages

Voucher can be used for \$25 off per person if booking is for less than 10. Voucher must be used towards purchase of a land and air Spring Break package. Promo code MK172.

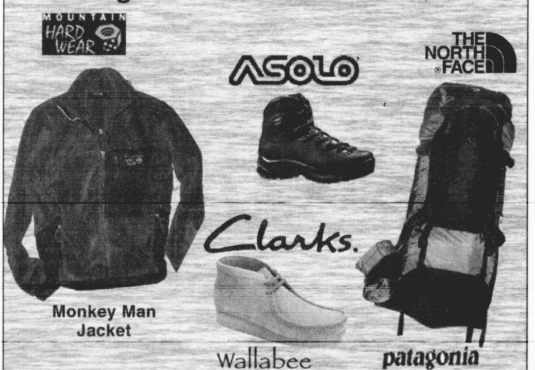
Book now & save!
STA TRAVEL
THE STUDENT EXPERIENCE



University of Kentucky • 255 Student Center • 859-317-2685

35th Anniversary Sale

Sale ends Saturday Sept. 29th
Register to Win Door Prizes!



STOREWIDE SALE - Up to 70% Off!

Central Kentucky's Outdoor Headquarters!

Locally Owned & Operated

KEEN
Come See Our Camping & Climbing Department

Mon-Fri 10-8

Sat 10-6

Sun 1-5



Since 1972

189 Moore Drive
278-0730



Fraternities

Alpha Gamma Rho

Alpha Gamma is a social fraternity with a professional overtone concerning the development and comradeship of young men involved in agriculture. Though largely composed of agriculture majors, the fraternity prides itself on a membership of men from throughout the state (and has several out of state members) that are involved in the rural and agricultural lifestyle. The fraternity is composed largely of young men from small towns that enjoy the laid back, relaxed atmosphere that Alpha Gamma Rho has to offer its members in addition to the various social, academic, athletic and career related opportunities that stem from such a brotherhood. Involvement of members in several clubs throughout campus broadens opportunities for brothers to be exposed to potential friends and activities that arise from numerous club officers. AGR would like to extend a welcome to anybody interested in our order and welcome any additional guests, as we also make an effort to be as hospitable as possible.

Alpha Tau Omega

Since 1865, Alpha Tau Omega has been recognized as the nation's premier leadership fraternity. The UK chapter of AT, Mu Iota, is no exception. Before actually becoming Mu Iota of Alpha Tau Omega in 1909, the founders at the University of Kentucky were actually a secret society called the Midnight Imps. Upon founding the UK chapter, AT National Fraternity allowed the Midnight Imps to retain their Greek letters (MI) and become the first and only chapter listed out of order.

Currently, AT is still a unique and important addition to UK's campus. Alpha Tau Omega has remained in the top tier in almost every category for the past decade. Whether it is intramurals, academics, social, recruitment, or community involvement, AT has consistently been one of the top fraternities at UK and in the country. With another successful recruitment of intelligent gentlemen, Alpha Tau Omega looks forward to capturing more awards while building a strong brotherhood.

Delta Sigma Phi

Welcome to Delta Sigma Phi. Established in 1899, the organization has long stood for time-honored traditions created by our founders while also embracing the new century with the philosophy of our motto, "Better Men, Better Lives." Delta Sigma Phi is brotherhood for a lifetime as we live by our core values: Culture, Harmony and Friendship.

Delta Tau Delta

The Delta Epsilon chapter of the Delta Tau Delta Fraternity was founded at the University of Kentucky in 1924. Over the past 83 years it has grown into one of the biggest and most successful chapters on UK's campus. Located on South Limestone just south of Waller Ave., the Delt house is among the oldest fraternity houses at UK. In 2005, they received their national award for best Delt Chapter and also won Homecoming. Famous alumni include Kentucky Governor Ernie Fletcher as well as Jim Host, the founder of Host Communications.

FarmHouse

FarmHouse fraternity was founded on UK's campus in 1951, and since then has been an integral part of the University of Kentucky Greek Life. Although our name does not necessarily suggest Greek affiliation, we are just as Greek as our neighbors down the road, Kappa Sigma. We are proud to be Greek and show that pride in everything we do - whether that is winning intramural tug of war, doing our part for the UK campus and Lexington community, hosting philanthropy events to help those who are in need, or winning the Greek Fraternity of the Year last spring. Though our name implies agriculture, we are not an exclusively agriculture based fraternity. We have majors ranging from Animal Science all the way to Political Science and Agriculture Economics to Biology. To us, FarmHouse means hard work, dedication, brotherhood and a home away from home, and everyone who wants to be a part of that is welcome to come by and visit. We'll see ya'll at 420 Hilltop Avenue, right across the street from the library.

Phi Gamma Delta

The brothers of Phi Gamma Delta (FIDJ) are returning to campus this fall after one of the most successful years in chapter history. At the spring awards banquet, the members of the Upsilon Kappa Chapter were not only recognized for new member education, organizational management, and scholarship, but the FIDJ brothers won awards for highest active membership, highest new member GPA and highest combined GPA, on top of winning Greek Service Week for the third consecutive year. However, not content with past accomplishments, the members of Phi Gamma Delta are looking to continue their on campus dominance in the new school year. Following a successful fall rush, the FIDJs are looking to repeat as winners of Homecoming week, in addition to turning in another solid academic performance. More important than any award, however, is setting an example in every aspect of college life - a goal of every member.

Kappa Sigma

The Beta-Nu chapter of Kappa Sigma values its partnership with the Greek Community and the University. Since its founding in 1901, the Chapter has contributed to the education of thousands of men, helping them succeed as students and graduates.

Recruiting student leaders, promoting scholarship, serving the community and facilitating fellowship is our mission. Last year the chapter enjoyed tremendous success. We were honored to be named Fraternity of the Year by UK. We also won the overall Intramural Championship, were named a champion chapter by our national headquarters, our member GPA rose to a 3.01 and we grew from 78 actives to 128 by the end of the year.

This fall the chapter has recruited an intelligent, motivated and mature group of men. We have great expectations with regard to their success on campus and within the fraternity.

Lambda Chi Alpha

Lambda Chi Alpha at the University of Kentucky (Epsilon Phi Zeta Chapter) is a social fraternity formed to help collegiate men through their college experience. Our fraternity's GPA is one of the highest in the fraternity system. Grades are very important to us and we can help you achieve any of your academic goals.

In order to enjoy college you have to have a good social life. Academics are the reason you come to school, but if you do not have fun, you won't stay. We attend and host many social events throughout the year to allow our brothers to meet new people, relax and have a good time. Some of these events include date parties, formals, semi-formals and brotherhood retreats. Although we are about much more than partying, we do have a good time.

Omega Psi Phi Fraternity

Omega Psi Phi Fraternity, Inc. was founded on November 17, 1911 on the campus of Howard University. The Fraternity has four founders: Dr. Ernest E. Just, Dr. Oscar J. Cooper, Professor Frank Coleman, and Bishop Edgar A. Love. Omega Psi Phi stands on four cardinal principles: Manhood, Scholarship, Perseverance, and Uplift. Omega Psi Phi Fraternity, Inc. has spread across college campuses nationally while also establishing chapters globally. Here at the University of Kentucky the Rho Lambda chapter of Omega Psi Phi was established April 26, 1980. The chapter here has held true to the four cardinal principles by helping strength the community as a whole, doing community service, and having fund raisers and taking up donations for charitable organizations. Some of the Organizations are the Salvation Army, Toys for Tots and the Jungle Tree. We also do other service based programs such as mentoring children, collecting coats to be donated to less fortunate children during the winter season, and collecting shoes to be donated to the Katrina relief efforts these are just a few things the chapter has done in the past few years. The chapter is also in the process of expanding its service efforts by establishing other programs with the University of Kentucky Football team and other organizations.

Phi Delta Theta

In 1848, six men founded a fraternal brotherhood based upon friendship, sound learning and rectitude. Since being re-chartered in 2003, the Kentucky Epsilon chapter of Phi Delta Theta here at the University of Kentucky has strived to live up these pillars upon which the fraternity was founded.

Friendship that is built thanks in part to a semester brother-hood retreat as well as multiple brotherhood events such as cookouts, tailgates and chapter meals. A strengthened brotherhood has also allowed us to attain our first of many intramural championships as well as nationally ranked flag-football teams.

Phi Delta Theta has had more Singletary scholars become brothers in the past five years than every other fraternity combined.

In the pursuit of rectitude, Kentucky Epsilon has taken part in many philanthropic endeavors. Winning overall fraternity champions in Greek Sing, participating actively in DanceBlue as well as hosting a bowling tournament in which all proceeds go to the ALS foundation are only a few endeavors we undertake.

Although the brothers of Phi Delta Theta have accomplished a lot in our short tenure here at the University of Kentucky, we are not satisfied. The coming years look bright and we strive to continually grow into an even better fraternity while never losing sight of what has made us what we are today.

Phi Kappa Tau

Phi Kappa Tau, commonly called Phi Tau, was founded at UK in 1920. Phi Tau regularly maintains a GPA well above the All-Male Average and has won campus awards for both Best GPA and Best New Member GPA within the past two years. For the past two years Phi Tau has also averaged over 30 hours of community service per member and this past summer was awarded Best Community Service Program of all Phi Tau chapters nationwide. Members of Phi Tau are present in many other campus organizations ranging from the UK Debate Team to ROTC to UK Choral Programs to College Democrats & Republicans. Last year Phi Tau won the Greek Week competition and was named Overall Champion at the annual Greek Sing competition with their signature "Rolly Chairs" routine.

Attention: Pre-Pharmacy Students Pre-Pharmacy Club Meeting

Monday Sept 24
4pm-5pm

College of Pharmacy, Room 220

Learn more about careers in pharmacy!

All majors!! No membership required.

We love our new Omicrons!

- | | |
|-------------------|----------------------|
| Sarah Allen | Brittany Jarog |
| Marian Bolton | Natalie Joachim |
| Meredyth Bond | Julia Larsen |
| Ainsley Bussell | Ali Ludwig |
| Amanda Caldwell | Jenna Miller |
| Heather Colabella | Meredith Murphy |
| Sarah Curl | Audrey Nordhoff |
| Natalie Dowling | Kendal Novak |
| Stephanie Durbin | Kayla Rich |
| Kayla Easterling | Rachel Romer |
| Kelsey Farr | Amber Ryan |
| Lauren Flowers | Becka Sametz |
| Hollie Fritz | Christina Schnobrich |
| Mary Kate Fulton | Katie Shirlcliffe |
| Kelsey Gough | Traci Thomas |
| Nikki Hall | Candace Tomes |
| Annabelle Hamm | Courtney Ware |
| Honey Harvey | Emily Witt |
| Mallory Head | Katie Witte |
| Kim Istok | |

Alpha Omicron Pi



ΑΔΠ

Welcomes 60 new Alphas!

Ashley Barney	Jennifer Lamothe
Kate Bartlett	Ashley Marcos
Ryann Boyd	Heather Massa
Maddie Bromann	Nicole Mather
Alicia Browning	Maggie Merk
Katlyn Bucher	Susannah Milner
Laura Buncher	Courtney Morgan
Courtney Canty	Kellie Oates
Charlsen Cardwell	Margaret Oates
Catie Carroll	Mattie Parsley
Danielle Chapman	Hannah Passano
Julie Colgate	Logan Patten
Courtney Cox	Cullen Pence
Kayla Curtis	Emily Popham
Meghan Dars	Regan Preisser
Alyssa Evens	Katie Quinn
Megan Fleece	Rachel Rodgers
Kat Flynn	Stacey Singliner
Mercedes Fussnecker	Gracie Steuss
Alayna Gathy	Mason Tatum
Amy Green	Kelsey Vandeventer
Lauren Holdel	Brittany Vincent
Caroline Huff	Casey Voris
Jennifer Humkey	Mollie Walker
Kaley Hyde	Katelyn Wallace
Ashley Jaglowicz	Laura Lynn Williams
Emily Jenks	Anne-Taylor Wilson
Kim Kelly	Hope Wurth
Aubrea Knight	Anne Yates

Alpha Delta Pi...
"Where the first
are the finest and
will forever be
fabulous!"

ΑΓΔ

Kayla Adington	Emily McMillen
Anna Allen	Carly Miller
Katie Brewer	Karissa Moll
Sarah Bruce	Madeleine Morey
Meghan Buxton	Molly Mornar
Jessica Clarke	Lauren Moyer
Marian Colburn	Megan Murphy
Caitlin Cupp	Chelsea Murray
Andrea Dyer	Robin Nease
Whitney Epperson	Lauren Niemann
Ashley Faulkner	Crysalis Nieman
Melanie Galeener	Becca Nimer
Ashley Gardner	Sarah O'nan
Kelsey Goodwin	Laura Parish
Erin Gatewood	Holly Radabaugh
Whitlee Hampton	Kristen Rexroat
Alex Harden	Danielle Richardson
Ali Harrigan	Carrie Riggins
Kaylee Hatcher	Abby Rutherford
Jamie Hays	Emily Samuels
Jess Hoehn	Becca Schulte
Katie Howard	Sarah Shewmaker
Liz Huber	Rachel Sipp
Lauren Januzzi	Emily Smith
Kelly King	Lucy Ann Spall
Laura Knott	Meghan Stromberg
Sarah Kuegal	Emily Topmiller
Morgan Lancaster	Alyse Wagner
Rebecca Lilly	Erika Weddle
Shannon Lowe	

**Alpha Gamma Delta is proud
and excited to welcome all
of their new sisters. We
love you girls!**

DIDN'T YOU KNOW THEY WOULD GO Chi-O?

Ali Adkins	Liz Kortum
Ashley Adkinson	Rae Letterie
Kelsey Bailey	Megan Madison
Courtney Baird	Rachelle Mattingly
Nicole Benz	Megan McDowell
Lindsey Brantley	Susie Meeks
Lizzy Breir	Liz Mellen
Danielle Calkins	Hannah Monroe
Lex Chalburg	Ashton Mothersbaugh
Taylor Church	Jordan Nalley
Kelly Clark	Marian Pearson
Amy Clifford	Lauren Pitcock
Bre Connaughton	Hope Pitman
Courtney Cowden	Brittany Porter
Courtney Cripe	Abby Priddle
Madison Dallas	Kayla Reddick
Lauren Daub	Natalie Rich
Nina Deeb	Megan Roberts
Mary T. Devins	Liz Rubando
Jan Drury	Stacey Schwartz
Glenna Graves	Tori Senninger
Natalie Hatfield	Marci Shutt
Kelsey Hayes	Tara Skaggs
Katie Higdon	Elliot Tabor
Jessica Holloway	Katie Voss
Lindsey Howard	Allison Wahl
Amanda Hurt	Carrie Wahl
Megan Kindrick	Lara Waldner
Meg Kirkpatrick	Maddie Willis

More Fraternities...

Phi Sigma Kappa

Brotherhood, Scholarship, and Character. The pursuit of Justice, Wisdom, and Honor. These cardinal principles continue to guide the men of Phi Sigma Kappa over 80 years after our founding at the University of Kentucky. The fraternity experience presents an opportunity for men to develop characteristics of leadership, cooperation, responsibility, scholarship, and camaraderie beyond what is normally available during undergraduate studies. Phi Deuteron chapter of Phi Sigma Kappa supplies a niche within UK's expansive community where a member has the opportunity to exchange knowledge and experience among a diverse group of individuals thereby preparing himself for life and success after college. In addition to better preparing members for life after college, we also enhance the college experience through social gatherings, athletic competitions, philanthropic events, member retreats, alumni gatherings and work opportunities. Some accomplishments within recent years are winning Greek Service week for fraternities, placing at UK homecoming competitions two years consecutively, placing during Greek Week competitions, winning Theta Dodgeball tournament, and our recent undefeated tournament play at Lambda Chi Alpha and Alpha Delta Phi County Fair Cornhole tournament. For all these reasons and more we are proud of our fraternity.

Pi Kappa Alpha

Pi Kappa Alpha has completed extraordinary task and achievements over the last couple of years. With the success and leadership that we have received from our upper classmen and brothers, we have reorganized pi ke for both high standards in academics and athletics. Two years ago PIKE composed the third highest GPA of all fraternities on campus, that same year we placed in the top five of intramurals. Last year, through our hard work and preparations, we finished with another top five in intramural athletics. PIKE has maintained to recruit exceptional athletes and individuals along the way for the past two years, four semesters; we have welcomed 77 new members to our fraternity, including the most recent pledge class of 36 members. Without a chapter house located on campus, we are still one of the highest and most well known fraternities at the University of Kentucky. This past summer at the annual National Awards ceremonies in Memphis, Tennessee, Omega chapter received two prestigious awards including best overall recruiting of 2007, and a 20/20 recruiting award. PIKE has presented itself to all IFC, philanthropy, Greek, homecoming and intramural events for the past years.

Pi Kappa Phi

Pi Kappa Phi Fraternity was founded in 1904 as "The Phi" or the "Non-Fraternity" and has grown into America's Leading Fraternity, striving to break the fraternity stereotype. We are a first-class fraternity that firmly believes in the tenets of character, leadership, academics, sportsmanship and service. These principles are not only valued but also instilled

through leading-edge education, service and leadership opportunities. Pi Kappa Phi remains the only fraternity to create and maintain its own national philanthropy, Push America. We work with Push America locally and nationally to raise funds and awareness for people with disabilities.

Every fall we co-host the Gridiron Challenge to raise funds for Push America. We also put on such events as ACCESSAbility, Win-O-Lympics and No Boundaries Week. This fall, the Eta Tau chapter here at the University of Kentucky is celebrating our 10 Year Anniversary of our chartering. We look forward to welcoming back our founders and alumni. Good luck to all Greek organizations this school year!

Sigma Alpha Epsilon

Sigma Alpha Epsilon was founded March 9, 1856 at the University of Alabama in Tuscaloosa. Since its inception more than 280,000 members have been initiated. SAE is North America's largest social fraternity. The fraternal symbols include the lion, the phoenix, Minerva, and the fleur-de-lis. Currently the Fraternity offers a comprehensive member-education program called "The True Gentleman Initiative."

The SAE Chapter here at the University of Kentucky is one of 250+ chapters nationwide. Located on 410 Rose Lane, the chapter actively participates in intramural, campus and philanthropy events. SAE annually co-hosts with Chi Omega in their campus wide event, "Greek Sing", which raised over \$27,000 dollars for the Make-A-Wish Foundation last year. Since 1933, SAE has won 48 intramural championships, including two out of the last three intramural seasons. SAE was built upon the ideals of loyalty, tradition and success which we strive to maintain.

Sigma Chi

The Sigma Chi Fraternity was founded upon friendship, justice and learning. Keeping these ideals in mind, this year promises to be a fulfilling and exciting one as the Lambda Lambda Chapter here at UK celebrates its 115th year on campus! This summer the Chapter was awarded the Sigma Chi Legion of Honor, recognizing academic excellence. The then brothers kicked off this fall gaining thirty motivated, diverse pledges. With the semester now in full swing amid class work, heavy campus involvement, community service, intramurals and Kentucky games, the brothers have been working diligently on several other projects. With Delta Delta Delta's help we have been organizing the first annual "Fight Night," a philanthropic boxing tournament between other UK fraternities, and this spring plan to host "Tri-Province," a leadership retreat for the officers of all Sigma Chi chapters in Kentucky and Tennessee. We're excited about this year and wish you all the best of luck!

Sigma Nu

Sigma Nu was founded in Lexington VA at Virginia Military Institute in 1869 and it started at the University of Kentucky in 1902. Some famous Sigma Nu alumni include: NBA Basketball coach

Pat Riley, Lexington Mayor Jim Newberry, Harrison Ford, Bob Barker, Boyd Tinsley of Dave Matthews Band. Sigma Nu's mission is: To develop ethical leaders inspired by the principles of Love, Honor and Truth. To foster the personal growth of each man's mind, heart, and character. To perpetuate lifelong friendships and commitment to the Fraternity.

Sigma Phi Epsilon

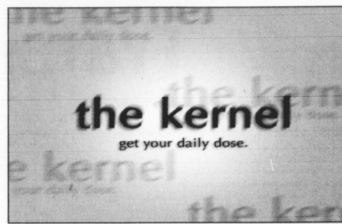
Where do you find guys that can make a 4.0, go out four nights a week, workout about twice a day, have a job, keep a girlfriend, and still find time to ask their friends how they're doing? This is what being a SigEpi is all about: finding the balance between work, school, and play by having a strong foundation based on the principles of virtue, diligence, and brotherly love. Our chapter's most recent addition, The Balanced Man Scholarship, exhibited this by rewarding incoming freshman this year for having the traits characteristic of being a SigEpi. A successful rush behind us, our fraternity is ready to raise the standard even higher with a new philanthropy, better grades and sports, increased campus involvement, and a positive outlook toward the 2007-2008 school year.

Sigma Pi

The Epsilon Beta Chapter of Sigma Pi Fraternity here at the University of Kentucky now has 100+ gentlemen associated with the chapter including active brothers and our new fall pledge class. This chapter is proud to have Alan DeSantis, top professor on campus and recently published author, as our Chapter Advisor and respected alumni. Our active brothers hold many leadership roles on campus such as David Ritchie, who is Overall Chairman of Dance Blue, and Steven Jesse, who is a Gatton Ambassador. The brothers of Sigma Pi also hold several philanthropy events each year including our Red Cross Car Wash put on with Chi Omega Sorority, Greek Bowl hosted with Pi Beta Phi Sorority, and Pi Athlon put on with Alpha Omicron Pi Sorority, which won philanthropy event of the year this past year.

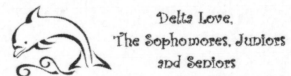
Triangle

Triangle Fraternity is one of the few fraternities that still limits its membership to certain majors, those being Engineering, Architecture and the Sciences. Originally established at the University of Kentucky in 1920, the Kentucky chapter of Triangle was well established at the University for 65 years until it was disbanded in 1983. On November 12, 2005 Triangle was re-chartered at UK and is now a growing, active member of the UK Greek Community participating in fraternity intramurals and IGPA service and philanthropy events. We currently have 33 active members with an average pledge class of 11 men. Due to our exclusivity, Triangle is able to draw together outstanding men with similar interests, course work and career goals which fosters an environment of learning and brotherhood while at the same time offering the same social outlets as other social organizations.



Three Times Better with Just one Letter, The Tri Delta Fall Pledge Class of 2007

- | | |
|--------------------|--------------------|
| Bianca Bailey | Taylor Meinking |
| Haley Besten | Chelsea Moll |
| Lizzie Betten | Laura Mulloy |
| Alaka Branham | Sally Myers |
| Sarah Parish | Mandie Neilson |
| Katie Burns | Emily Pitt |
| Holly Carter | Stephanie Prater |
| Lauren Crean | Rachael Pedigo |
| Hillary Dodd | Katie Penn |
| Mollie Duncan | Lauren Prince |
| Millie Freeman | Taylor Ray |
| Jessica Goff | Natalie Read |
| Ellen Goheen | Megan Reynolds |
| Ellen Hammer | AnnaMary Richmond |
| Ann Louise Hance | Elizabeth Rush |
| Anna Hays | Jehan Samhat |
| Anna Merle Hormann | Katherine Simson |
| Jasmyr Jefferies | Annie Smith |
| Jill Johnson | Sarah Spoor |
| Kaleigh Kamphuis | Hunter Stoll |
| Lindsay Koeplie | Kate Taylor |
| Kelly Lawless | Lauren Thompson |
| Alex Lipsy | Jessica Waldvogel |
| Mart Mason | Sarah Weatherford |
| Elexene Mattingly | Casey Wheelless |
| Suzanne Mattingly | Ashleigh Whitehead |
| Erin May | Angela Wilkinson |
| Laura McCullough | Martha Wilkinson |
| Kristan McCullum | Mandi Wilson |
| | Tessa Wisser |



BELLA ROSE
BIG CITY FASHION
SMALL TOWN CHARM

MON, TUES, WED, FRI, 10-6
THUR 10-8 • SAT 10-5

CORNER OF MAXWELL & UPPER
255.2565

KAPPA KAPPA GAMMA WELCOMES OUR NEW LOVELY LADIES

MARIE BAZELEY	MAGGIE GRISANTI	SARAH MILES	KATHARINE SHAFFERMAN
LAUREN BELL	MEGAN HENSLEY	ASHLEY OSBORNE	KATIE SHEARER
ASHLEY BIVEN	KELSEY HAYLAND	MARGHELLE OSBORN	SARA SUTTON
MEG CASHIDY	CHANDLER JOHNSON	ZURRYA PARR	SARCA TELLES
ALEXIA CORNETT	NISSAN JOHNSON	SARAH PLEIKINI	CRISTINA THREKMAN
AKANDA CUREN	JOHN OSBORN	AMBERLY QUINN	ROSEMARY ELIZABETH THOMAS
MAURA DEWITT	RACHEL KELLEY	NISSAN QUINN	ROSEMARY MARIE THOMAS
ALYSSA EASTES	CAROLINE KELLY	TORRY RASMUSSEN	BRITNEY WITTROW
NICOLE EGGERS	WHITNEY KESSING	JOHN BENFORD	ANITA WAGNER
ELLEN FENY	TORY KOPFKE	CHRISTINE RAINLEY	JOHN ANNA WEBSTER
NIKI EDOROKO	BRIDGETTE LAWRENCE	LAURA SARTORI	DAILEY DALE WILMOTT
BESSY FELDRAMP	HANNAH MCGEE	AMBERLY SARTORI	ALEXANDRA WITTEK
BACHEL HART FREEMAN	MEG HANCOCK	AMBERLY SARTORI	HANNAH WITTEK
SARAH GRAY		AMBERLY SARTORI	AMBERLY SARTORI

LOVE & LOYALTY ALWAYS, YOUR SISTERS

Greek Week Calendar

Monday
Wear Your Letters Day (Check in at POT) - 10 am- 2 pm
All Greek Cookout (SAE/ Sigma Nu Backyards) - 9 pm

Tuesday
Greek God and Goddess Date Auction (Memorial Hall) - 7 pm

Wednesday
KKG and Delta Sig Kentucky Karnival (Haggin Field) - 4 pm

Thursday
Tug O' War (Haggin Field) - 4 pm
"The Rock" Special Event (SAE Backyard) 8 pm

Friday
Greek Chariot Races & Toga Fest (Haggin Field) 4 pm

Saturday
Winners Announced! (W.T. Young Library) - noon

Φομερ Φφ ΤΦηΦρρΦω

Alpha Delta Pi

Alpha Delta Pi holds the distinction of being the first secret society in the world for college women. Founded on May 15, 1851 at Wesleyan Female College in Macon, Georgia, the society was originally called The Adelphean Society, from the Greek word for sister. Currently, UK's ADPi chapter is home to 185 members and just recently welcomed 60 new freshmen to its chapter. The Beta Psi Chapter of Alpha Delta Pi takes great pride in high scholastic achievement. Members represent all majors and fields of study at UK, and consistently maintain the highest GPA among all NPC sororities and IPC fraternities on campus. Alpha Delta Pi is ranked number one for Semester GPA and Cumulative GPA according to 2007 Panhellenic Scholastic Rankings, breaking the record for the highest chapter GPA in NPC history! In addition, Alpha Delta Pi won first place in the Panhellenic Recruitment school supply drive which benefits local schools and their needs. The Beta Psi chapter of ADPi was also awarded the Golden Lion award for the first time in 2005, an award that only 8 chapters have received nationally.

In addition to scholastic achievement Alpha Delta Pi is committed to serving the community through volunteer work and monetary donations. Just this year at Fusion, twelve ADPi served as Student Team Leaders, two served on the ADPi planning committee, and over 40 other members participated in this event. Alpha Delta Pi has contributed over \$2 million to RMHC. Beta Psi members volunteer each week in various ways, such as making and serving meals, playing bingo and board games, and even planning flowers. Beta Psi members not only donate time, but money as well. Last year, the chapter hosted its first campus-wide "Greek County Fair", which raised money for RMHC. The event included a cornhole tournament, line-dancing competition, Miss Greek County Fair Pageant, apple-bobbing, a pie baking contest, and a hamburger eating contest for fraternities.

Alpha Gamma Delta

Founded in 1904, Alpha Gamma Delta is an international fraternity for women, dedicated to academic excellence, leadership development, high ideals and sisterhood. Alpha Gamma Delta's Epsilon chapter was founded in 1908 here at the University of Kentucky. Our colors are red, buff and green, our mascot is the squirrel and our flowers are red and buff roses. Alpha Gamma Delta is the longest continually running sorority on campus, and we're excited to be celebrating our centennial next year! Alpha Gams thrive on campus involvement, whether through sports or academics, two areas in which we excel. Last year we secured the intramural championship, and our freshman class grabbed first in grades for the Spring 2007 semester. You'll find Alpha Gams participating in a variety of campus organizations, like SICA, RSA, UK Fusion, or even being peer tutors. Alpha Gams commit themselves to giving back and spending time serving the community through many different service organizations. The Alpha Gamma Delta Foundation serves as our philanthropy, which benefits juvenile diabetes research and our sisters in need. We hold two philanthropy events each year, Twist Off in the fall and Weenies for Diabetes in the spring. The sisters of Alpha Gamma Delta are looking forward another great year at UK!

Alpha Kappa Alpha

Founded on the campus of Howard University in Washington, DC in 1908, Alpha Kappa Alpha Sorority is the oldest Greek-letter organization established by African American college-trained women. To trace its history is to tell a story of changing patterns of human relations in America in the 20th century. The Iota Chapter of Alpha Kappa Alpha was chartered at the University of Kentucky May 9, 1975 by 16 women that had a vision of sisterhood, service and scholarship. Last year the ladies of Alpha Kappa Alpha dedicated over 800 hours of community service to the Bluegrass-Applegate Teen Center where they serve as mentors and tutors for at-risk youth. Some of their most notable campus activities include their Fall Welcome Back Week for new and returning students, (which they do in conjunction with Alpha Phi Alpha Fraternity, Inc.), Total Body Takeover

Week and Breast Cancer Awareness Week. Alpha Kappa Alpha was named 2006/2007 Organization of the Year at UK! The Lyman T. Johnson Banquet for their ground breaking project, Teaching Elders New Technology. Alpha Kappa Alpha also received the National Pan-Hellenic Council Highest Cumulative GPA Award for the 2006-2007 school year. The ladies of Alpha Kappa Alpha were also named the 2007 winners of the NPHC Homecoming Step Show. This year Alpha Kappa Alpha will be taking their initiatives to new heights with their upcoming "Pink Goes Global" Day. The Sorority will be raising awareness and challenging students to be a part of the international fight against human injustice. They will be showing "Born Into Brothels", a documentary that highlights child prostitution in Calcutta, India. They are encouraging all UK students, faculty and staff to come out to Wisconsin

Alpha Omicron Pi

Alpha Omicron Pi was founded in 1897 at Barnard College of Columbia University in New York. Alpha Omicron Pi is an international sorority with 178 collegiate chapters in both the United States and Canada. Our color is cardinal, our jewel is the ruby and our mascot is the panda. Our national philanthropy is Arthritis Research. Every spring we host Pi-Athon as a fun way to raise money for our philanthropy. We also host a Christmas party every year for local underprivileged children. It is a great opportunity for us to give back to the Lexington community, and something we look forward to every December. Alpha Omicron Pi is also proud to say we have won Homecoming five out of the past seven years and we have won Intramurals the past two years.

Ceres

The University of Kentucky's Ceres Women's Agricultural Fraternity was colonized in 1996 with our charter ceremony in 1997. Over the past ten years our sisterhood has developed into one that is recognized around campus. We participate in several Greek Events including intramural sports, Watermelon Bust and Sigma Spike. While we still take pride in our agriculture roots, we recruit women from all over UK's campus. Ceres attributes are Commitment, Agriculture Orientation, Leadership, Fellowship and Scholarship. Our colors are violet and gold, while our mascot is the frog. Our flower is the sterling silver rose and our philanthropies are Relay for Life and Central Kentucky Riding for Hope. The sisters of Ceres would like to wish everyone the best of luck with this new school year. If you have any questions about our organization, please feel to contact us.

Delta Zeta

Delta Zeta welcomed 60 smart, beautiful girls this year. They join a strong sisterhood of 172 girls who are leaders in and out of the classroom. Delta Zeta girls love the colors green and pink, and are partial to turtles because they are our mascot. Our philanthropy is Speech and Hearing, and we are involved locally with the Lexington Speech and Hearing Center. We host a four square tournament in the fall and the Mr. UK pageant in the spring.

Delta Gamma

We are Delta Gamma. Our colors are bronze, pink, and blue. Our symbol is the anchor, which stands for hope. Our flower is the cream colored rose and we are the first and only sorority to have our flower registered with the American Rose Society. Our motto is "Do Good." Service for Sight is our philanthropy and we are the first sorority to establish our own independent philanthropic foundation. Along with every other Delta Gamma chapter nationwide, we hold Anchor Splash each year to raise money for our philanthropy. We also volunteer for Tri-for-Sight each year which raises money for UK Eye Research. Delta Gamma was awarded Sorority of the Year-Deans Cup for 2007. We were also awarded the Level of Excellence Award for Recruitment and Retention. We had over 35 sisters participate in Dance Blue last year, raising around 9,000 dollars for UK Children's oncology unit. We also received two awards - Fundraising and Spirit Award. Delta Gamma currently has members involved in UK

Student Government Senator, UK Cheerleading, Polo Team, Dance Ensemble, Dance Blue, IGPA, The Cause, Fusion, Panhellenic, Order of Omega, Student Activities Board and Women's Club Soccer. We look forward to adding to our accomplishments with our newest and largest pledge class on campus, our baby anchors of 2007, Delta Delta Delta.

The women of Delta Delta Delta are represented by the colors silver, gold and blue. Our mascot is the dolphin, however the pearl is the symbol for our new members. We raise money throughout the year for St. Jude's Children's Cancer Research during Frats at Bat, our annual baseball tournament, and Midnight Munchies, our mid-night breakfast buffet. Tri-Delta members are smart, strong and confident women and our new members are no exception. We are so excited about our newest pledge class! You all are so special and we love you! Welcome to Delta Delta Delta!!

Delta Sigma Theta

Delta Sigma Theta Sorority, Inc. is a non-profit, Christian based organization committed to public service with over 250,000 members worldwide. Delta Sigma Theta was founded January 13, 1913 on the campus of Howard University by 22 distinguished collegiate who felt the need for an organization focused on social activism and bettering the community. The Mu Epsilon Chapter was chartered here at the University of Kentucky on May 9, 1975. Thirteen dynamic women heard the call of Delta. During the course of the Mu Epsilon Chapter's 32 year presence on campus, there have been many programs and initiatives aligned with Delta's national Five Point Thrust: Economic Development, Educational Development, International Awareness & Involvement, Physical & Mental Health, and Political Awareness & Involvement. The Mu Epsilon Chapter initiated the Mr. & Ms. Black UK Pageant and the Crispin & Cream Ball. Other notable programs include voter registration drives, the stress and rejuvenation fair, passing out water during move-in, passing out ice cream on the first day of classes, and the success series.

Kappa Kappa Gamma

Kappa Kappa Gamma maintains a tradition of excellence and leadership both inside and out of the classroom. From Student Government to Division I athletics, Kappa makes sure our proud light blue and dark blue colors can be seen just about anywhere on campus. Kappa works hard to give back to the community through philanthropic events such as Kappas and Kappa Carnival. Last year at Kappa Carnival, thousands of books were raised for donation to Reading is Fundamental, Kappas national philanthropy. Last year's Kappas brought over 1,000 people through the front door at 238 E. Maxwell for \$5 all you can eat spaghetti dinner! All of the proceeds were donated to families in need of rehabilitation services. Through philanthropy and sisterhood, these ladies have formed friendships that will last a lifetime!

Kappa Alpha Theta

Kappa Alpha Theta sorority was the first Greek fraternity for women. Our nickname is "Theta", our colors are black and gold, our flower is the pansy and our mascot is the kite. We support our philanthropy, C.A.S.A. (Court Appointed Special Advocates) throughout the year with fun events such as a barbeque (NEW this fall, come support CASA!), a silent auction and Theta Dodgeball in the spring which we put on with Sigma Phi Epsilon fraternity. Last year Theta earned the highest New Member GPA and we know our new girls are shooting for a repeat performance!

Kappa Delta

Kappa Delta Sorority maintains traditions of excellence in leadership, scholarship, social interest and philanthropy. Kappa Delta has more philanthropies than any other national sorority. They include Girl Scouts of the U.S.A., Prevent Child Abuse America, the Children's Hospital of Richmond, VA and the American Academy of Orthopedic Surgeons. Kappa Delta participates in many

campus activities as well, winning three awards during 2007 Dance Blue and First Place in the Banner Competition during 2006 Homecoming. Kappa Delta Sorority is the only sorority with its own national holiday, National Women's Friendship Day. Events are held on UK's Campus for that day, along with other events, including "The Breakfast of Champions." Famous KD's include Artist Georgia O'Keeffe, Patricia Polacco, Miller, Co-owner of Vera Bradley Designs, Ali Landry, Miss U.S.A. in 1996; Astronaut Dr. Bonnie Dunbar; and Actress Ellen Albertini Dow, who is best known for her role as the "Rapping Granny" in The Wedding Singer. The list continues to grow as more and more women pledge across the country. All those who pledge KD, including those at UK, strive "for that which is honorable, beautiful and highest."

Pi Beta Phi

Pi Beta Phi was founded in 1867 at Monmouth College in Monmouth, Illinois. It was the first national secret college society of women, founded after the Greek-letter fraternities of men. The founders of Pi Phi decided to use a golden arrow for the symbol with the Greek letters on its wings. In 1890, at convention, the wine caration was adopted as our flower. The petals are red for loyalty. The mission of Pi Beta Phi is to develop friendship, develop women of intellect and integrity, cultivate leadership potential and enrich lives through community service.

Through our various philanthropic activities, numerous funds are dedicated to helping a greater cause. Pi Phi philanthropies include Links to Literacy, Arrowmont Settlement School, Arrow in the Arctic, and CAR (Champions Are Readers). The Arrowmont Settlement School of Arts & Crafts, located in Gatlinburg, Tennessee, is fully funded by Pi Phi nationwide. There, courses are offered to enhance the academic and industrial enrichment of area children.

Sigma Kappa

Sigma Kappa was founded in 1874 at Colby College in Waterville, Maine. We are a social organization of collegiate and alumnae women committed to promoting the ideals of life long friendships, intellectual and spiritual fulfillment and service for the greater good. Our main philanthropies are the Maine Sea Coast Mission, gerontology and the Alzheimer's Association. We raise money through our philanthropy event, Sigma Spike, which is our annual mud volleyball tournament that is open to the entire Greek community. We also raise money through our annual lollipop sales. Our colors are lavender and maroon and our mascot is the dove. Throughout our college career, we will always live One Heart, One Way.

Zeta Phi Beta

Zeta Phi Beta Sorority, Incorporated was founded on the simple belief that sorority elitism and socializing should not overshadow the real mission for progressive organizations - to address societal ills, prejudices, poverty, and health concerns of the day. Zeta chapters and auxiliary groups have given millions hours of voluntary service to educate the public, assist youth, provide scholarships, support organized charities and promote legislation for social change. The Inasitable Iota Mu chapter of Zeta Phi Beta Sorority, Inc. was chartered April 25, 1981 at the Seal Beach Hotel in Louisville, KY. The charter members are Verinda Emersa, Kelly Woodall, and Vivian Landrum.

Our signature national programs are as follows: Z.HOPE, Zeta Helping Other People Excel, is an interactive, holistic and multidimensional outreach service initiative designed to enhance, cultivate and empower participants to develop health promoting lifestyle choices across the life span. Storm's Nest, a partnership with the March of Dimes in effort to encourage women to seek prenatal care.

National Educational Foundation (Human Genome Project), was begun formally in 1990 as the Human Genome Project is a 13 year effort coordinated by the U.S. Department of Energy and the National Institutes of Health Research and collect data, disseminate.

WE LOVE OUR NEW LADYBUGS!

Courtney Allen	Bruna Luzano
Laura Ballerstedt	Anne MacLeod
Samantha Barton	Christina Mapes
McKenzie Bell	Carrie Marcum
Mercedith Brown	Mara Mishler
Meg Cannon	Amanda Moore
Kristen Campbell	Chelsea Paslick
Lura Cash	Michelle Pedersen
Paige Collins	Becce Peiffrey
Jill Dobler	Heather Pickett
Becce Drinkard	Elizabeth Rangel
Maggie Evans	Mindy Rice
Lila Farnsworth	Angela Rockatroh
Michelle Gaines	Sammee Shaller
Sarah Galloway	Sarah Shultz
Myra Grigsby	Jenna Shapiro
Bethany Hall	Stephanie Sipp
Whitney Hall	Lauren Smith
Jamie Hallman	Raleigh Snyder
Annie Hansel	Jenna Teater
Tina Hill	Desiree Thompson
Stephanie Hoar	Katie Travis
Laura Hornbeck	Emily Tussey
Kate Hughes	Kenisha Webb
Ginger Hunt	Courtney Weems
Jamie Hunt	Sara Williams
Katie Keams	Sara Wilson
Kailie Kirven	Kristen Zwischenberger
Sydney Lesser	

Planned Parenthood of the Bluegrass
is looking for dedicated volunteers interested in making a difference and furthering the Planned Parenthood mission!

VOLUNTEER ORIENTATION

When: Wednesday, September 26th at 7:00pm
Where: Planned Parenthood of the Bluegrass
508 W. Second St., Lexington, KY 40508
For more information or to RSVP:
Call: 859-252-8494, ext. 21
Email: pbbg@ppfa.org

Do you need community service hours?

At Planned Parenthood®, we're here for you with high-quality, personal care at an affordable cost—for check-ups, birth control, including emergency contraception, testing and treatment for sexually transmitted infections, pregnancy testing, and more.

Planned Parenthood of the Bluegrass
A plan you can love with.

GrΣk Stars with 4.0

Hannah Bender
Mollie Block
Amanda Brown
Cara Childers
Amory Cox
Amy Crush
Lauren Dimond
Margaret Fields
Jenny Funk
Megan Geog
Susanna Goggin
Carrie Grimes
Morgan Hale
Brittany L. Hampton
Megan Howard
Andolyn Johnson
Shannon Kincer
Kaitlin Kosse
Kristin List
Alison Marcotte
Courtney McGrew
Julia Meador
Jackie Miller
Jayme Mitchell
Haley Orrender
Brittney Owens
Emily Parsley
Ashley Powell
Lori Reifert
Lauren Rogers
Megan Sanderson
Meredith Shaw
Kimberly Simpson
Lainey Smith
Molly Smith
Maria Somers
Megan Spalding
Paige Spangler
Jenna Steinert
Christina Stone
Sara Stout
Brooke Thomas
Sarah Thomas
Colleen Watson
McKinzee Weddle
Emilee Young
Heather Young
Maddie Young
Melissa Beasley
Tara Bonistall
Hannah Bryant
Natalie Deering
Meghan Edwards
Emily Elkus
Nicki Franco
Amanda Harris
Emily Hayman
Laura Hayman
Kate Hylen
Brittany Kidwell
Katie Lynch
Sarah Maichak
Katherine McKinney
Maggie Nestheide
Laura Newton
Tasha Phillips
Sarah Rainey
Becca Richmond
Lauren Kinney
Britney Roberts
Ally Rutledge
Brittany Sharp
Holly Sisk
Gina Trauger
Liz Veasey
Lauren Weiss
Ashley Woodruff
Mallory Wright
Aaron Bush
Shirley Addo
Marsha Ashley
Holly Adams
Kelly Arnett
Jamie Brown
Kathleen Donoghue
Megan Eagan
Kelsey Fort
Chelsey Hastings
Lisa Prosniewski

Jennifer Puckett
Jamie Rogers
Ann-Michelle Yates
Christopher Adcock
Daniel Carcara
Daniel Fitzgerald
Michael Gerichs
Nathan Mouser
Matthew McDermott
Eric Pierce
Tyler Stebbins
David Wittmer
Miranda Schack
Diana Baulch
Heather Brown
Kristen Cripe
Lauren Curry
Kelly Davis
Allison Dixon
Julie Eason
Paige Franklin
Michelle Haber
Lauren Hunter
Laura Ruth Ivie
Meagan Kilkelly
Caroline Lucas
Kate Mudd
James O'Neil
Allison Oerendorf
Sarina Petroni
Megan Segebarth
Kathleen Sherry
Kelli Thompson
Lindsay Wesley
Jesse Wolf
Leslie Bond
Krista Braun
Laura Caudill
Ann Dames
Beth Dicken
Laura DuBois
Riley Duck
Katie Fangan
Kristen Fulcher
Hannah Fuller
Callie Hays
Mardie Hendrickson
Mallory Kirtley
Kandice Nee
Meg Phillips
Sonja Rhee
Emma
Scharfenberg
Evelyn Schmalz
Sarah Small
Amy Spiero
Katherine Steck
Sarah Adkisson
Ashley Allison
Lauren Anker
Megan Beach
Brittany Brent
Emily Biddle
Sara Dickerson
Stephanie Esterle
Sarah Fogarty
Laura Garner
Cassidy Harmon
Stephanie Humanson
Julie Kretzer
Katie Land
Caitlin Mullen
Kate Preston
Shanna Preston
Amy Price
Summer Schneider
Angie Smits
Jaclyn Upchurch
Susan Vinyard
Benjamin Buker
Trey Cline
Joshua Cutshall
Eric Griswold
Jordan Hall
Timothy Kerdolf
Samuel Lanham
George Scott
Kyle Slone
Autumn Jones

Lashala Porter
Alexander Becker
William Booher
Rhodes Bratcher
Francis Doorley
Steven Gammon
Cameron Milligan
Lucas Mitchell
Kurt Myers
Benjamin Schell
Derek Smith
Paul Wischer
Julia Bichlmeir
Kally Bora
Kate Byron
Emilee Dover
Missy Dunne
Cheryl Duong
Alex Gibson
Amy Goodlett
Candace Kirk
Nichael Long
Kelly Neago
Sarah Rogers
Sarah Sivavich
Brittany Stark
Brent Burchett
Adam Fench
Andrew Jenkins
Jonathan White
Brandon Adams
Michael Barnett
Luke Johnson
James Thornberry
Megan Alexander
Sarah Beard
Lindsay Beckner
Darrell Freeman
Celeste Cross
Tara Davis
Katherine Elliott
Terri Fentress
Kendall Furnish
Ashley Goldsberry
Alice Heinz
Leanne Hewlett
Audra Isaac
Betsy Johnson
Sarah Kaye
Meg London
Jillian Meeks
Beth Mischel
Whitney Mobley
Lauren Northern
Mandy Peacock
Samantha Peterson
Melanie Regan
Lindsay Seitter
Lauren Shacklette
Kristin Sharp
Shelley Sizemore
Jessica Smith
Sisley Soper
Jessica Warren
Vanessa Brost
Jordan Drew
Amy Fossett
Sarah Leachman
Cheri Levinson
Amanda McNulty
Holly White
Rebecca Wichard
Erin Blanchard
Rachel Botto
Kathryn Buck
Lindsay Cordes
Carissa Dowden
Jamie Gardner
Hilda Guerra
Molly Hamilton
Sarah Hogue
Emilee Hunt
Felicia Lozano
Mary Kate McGuire
Jennifer McLaughlin
Kim Parsons
Britany Shoemaker
Abbi Stewart
Jordann Sullivan

Morgan Thomas
Andrea Travis
Erin Witte
Jaclyn Zakin
Tony Bakerjian
Taylor Baldwin
Garrett DeBernardi
Shaun Denney
Ryan Fischer
Paul Huynh
Daniel Mudd
Albert Norman
Jesse Parrish
Jacob Prewitt
Erik Ostling
Brandon Wuerrh
Taylor Ashley
Justin Boone
Alex Gibson
Patrick Cunningham
Justin Gaddin
Aun Munis
Matt Nichols
Christopher Schuetz
Todd Steyer
Walt Sweeney
Christopher Vente
Wade Barton
Negin Boskin
Eric Naitz
Alexander Hall
Joshua Kopp
Thomas Scovic
Adam Sirotnich
Christopher Weis
Brian Campbell
Joshua England
Darrell Freeman
Corey Gragg
Hugh-Derek Hall
Samuel Nicaise
Adam Rector
Luke Stephens

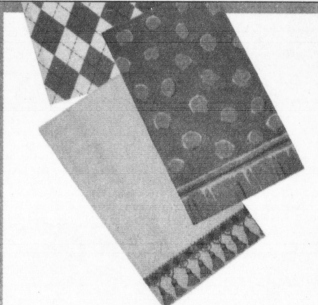
Stephanie Isaac
Emily Kilpatrick
Jennifer Meyer
Lisa Rogers
Wesley Schal
Sara Thurston
Kelly Baker
Cassie Barnett
Lindsay Bishop
Caitlin Condo
Maggie Corrigan
Natalie Donahue
Patrice Fischer
Emily Graham
Sarah Hanes
Kimberly Hassman
Erin Headley
Rebecca Hensley
Carlea Kovats
Beth Lewis
Lindsey Richards
Stephanie Schroder
Katie Wendler
Elliott DeWesse
Mason Meredith
Brent Stice
Ryan Goy
Jeffrey Phillips
Samuel Ault
Matthew Geog
Joseph Halbert
David Kirk
Adam Marley
Patrick Hill
Harold Wainwright
Frederick Barton III
Hugh Campbell
Benjamin
Cunningham
Miles Hannah
Patrick Hill
John Hoagland
Ian Holbrook

Grant Mills
Michael Scott
Grant Tellman
Justin Wedding
Jessica Allen
Leann Caudill
Chelsea Darrell
Kelly Graham
Ashley Jackson
Kelli Johnson
Brittany Langdon
Blair Lord
Katie Mand
Katy Monson
Kerri Neusendorf
Molly Newcomb
Jenny Partin
Tara Pope
Lyndise Powell
Whitney Sanders
Lauren Senauer
Nathan Harris
Tyler Keller
Travis Lewis
Sam Madden
Jeffrey Oldham
Christopher Ritter
Wade Wilson
Edwin Apenbrink
Jeffrey Deber
Joey Enrico
Jordan Jackson
Elijah Robey
Mark Rotmann
Cassidy Rouse
Charles Hoffman
Charles Hornback
Joseph Ritchie
Bradley Sturdivant
Jonathan Allen
Mark Amann
Andrew Lynch
Aaron Steinger

read the kernel



OFF BROADWAY COSTUMES
859-278-9278
m-f: 9 am - 7 pm
sat: 10 am - 5 pm
sun: Closed
183 Moore Dr.
Just off Nicholasville Rd.
Across from K-Mart



10% OFF Tailgating Supplies!
Bring this ad in for 10% off our unique Tailgating supplies. Come see what all the TALK is about!

db
Dede's
Jewelry, Gifts and Home Decor — fun, feminine and so much more!

12 S. Bank Street Mt. Sterling, KY 40353 859-498-9759
203 Walton Avenue Lexington, KY 40502 859-253-6844

NPHC

The National Pan-Hellenic Council is comprised of nine historically African-American Greek service organizations founded between the years 1906-1963.

NPHC was chartered May 10, 1930 by Omega Psi Phi Fraternity, Inc., Kappa Alpha Psi Fraternity, Inc., Alpha Kappa Alpha Sorority, Inc., Delta Sigma Theta Sorority, Inc. and Zeta Phi Beta Sorority, Inc. on the campus of Howard University in Washington, D.C. Later, in 1931, Alpha Phi Alpha Fraternity, Inc. and Phi Beta Sigma Fraternity, Inc. also joined; in 1937, Sigma Gamma Rho Sorority, Inc. and finally, in 1997, Iota Phi Theta Fraternity, Inc.

On the University of Kentucky's campus, NPHC was chartered in the spring of 1993 by eight of the nine service organizations: Alpha Phi Alpha Kappa Alpha Psi Omega Psi Phi Phi and Phi Beta Sigma Fraternities and Alpha Kappa Alpha Delta Sigma Theta Zeta Phi Beta and Sigma Gamma Rho Sororities.

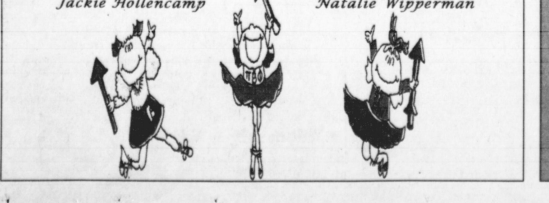
One of the biggest programs put on by the Council is the Annual Homecoming Step Show held the day of the big game. It has increased in size every year. Last year we had Ruddy Rush, a comedian from the "Doug Banks Morning Show," a broadcast based out of Chicago. The rap group Hurricane performed as well. This year's guest will be AJ Calloway, former host of BET's 106 & Park and current correspondent for Extra. In addition to the step show, each organization under NPHC holds its own forums, programs and events.



ΠΒΦ loves their New Angels!

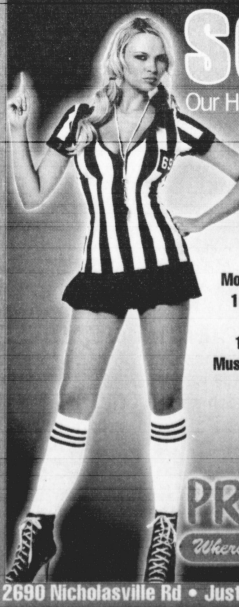
*Katie Baki
Alli Bartschke
Cecelia Bentley
Jenny Blakenship
Katie Bosworth
Whitney Bradley
Caitlin Brandon
Corie Broering
Morgan Burke
Emily Camp
Erin Centolanza
Jessica Chavez
Catherine Chin
Kaitlyn Colberg
Chelsea Dench
Brooke Edwards
Alice-Marie Ewals
Jennett Jay
Colby Flannery
Jackie Galaska
Heather Geary
Kimber Gibb
Courtney Greisl
Haley Hamilton
Andrea Hamlyn
Annie Hearons
Anna Hennessy
Jackie Hollencamp*

*Elizabeth King
Kayla Klein
Lynnsey Klenk
Jenna Klingenberg
Andrea Lange
Megan Leahy
Mariana Luna
Emily Markle
Erica Matheny
Jenna McNeal
Katie Meyer
Amber Montgomery
Brittany Murray
Katie Overbey
Rachel Peeler
Maria Petrosino
Kim Rawlins
Natalie Rusch
Dani Royle
Sarah Sands
Nikki Schwartz
Katie Shotsberger
Lauren Spears
Courtney Sprigg
Courtney Thomas
Jordan Vilines
Janie Walker
Natalie Wipperman*



SCORE!

Our Halloween Costumes are in.



Hours:
Monday-Saturday 10am-Midnight
Sunday 12noon-10pm
Must be 18 to enter

- Sexy Lingerie Small to 3x
- Shoes & Novelties
- Sensuous Oils & Lotions
- Risque Greeting Cards & Gag Gifts
- Hosiery and Body Stockings
- Videos & DVDs
- Bachelor/Bachelorette Party Supplies

PRISCILLA'S
Where Fun & Fantasy Meet

2690 Nicholasville Rd • Just inside the circle • 373-1290