



General View of Fort Boonesboro--The Kentucky State Building



This page in the original text is blank.

**Kentucky**  
AT THE  
**Jamestown Ter-Centennial Exposition**



---

APRIL 26 TO NOVEMBER 30, 1907

**A Report**  
FROM THE  
**Kentucky Jamestown Exposition Commission**

Written By  
C. C. OUSLEY, Secretary

This page in the original text is blank.

	<b>Foreword</b>	
---	-----------------	--



THE Kentucky Jamestown Exposition Commission, a duly incorporated association under the laws of this State, has completed the duties which it was organized to perform. In considering how successful were its efforts, it is believed the citizens of Kentucky will take into due consideration the various disadvantages by which the Commission was confronted in its effort to obtain a fund whereby the State might be adequately represented at the Jamestown Ter-Centennial Exposition.

Report of the Commission's stewardship is now made to those persons who have a right to consider themselves most interested, namely, those individuals, firms and corporations subscribing money to the Commission's fund and those who gave other substantial assistance in this work.

The Kentucky Commission collected a total of \$25,114.31. It expended a total of \$22,769.98. The excess of receipts over expenditures was \$2,344.33. The Commission, after due consideration, unanimously decided that the surplus of funds in its hands should be returned pro rata to those interests which made the original subscriptions. The basis on which the refund is made, is a total subscription of \$23,443.31. The additional \$1,671.00 was made up of two items which do not enter into account in the refund of the surplus. One of these items is \$778.85 received from the school children of the State and devoted to a special fund which was consumed in its entirety in connection with the erection of the Kentucky Building. The remaining \$892.15 was money received from the sale of the building and other credits. Thus, computing from the total subscriptions credited to the Division of Finance—minus contributions under one dollar each—and the total surplus in the hands of the Commission, a refund of ten cents on the dollar is possible and has been made.

No refund has been made on subscriptions of less than \$5.00 each. In the preparation of this report, it was necessary to make a limited number of estimates on expenditures incurred in prosecuting the refund of surplus. It is also reasonable to suppose that some of the subscribers to whom a refund has been made will not surrender their checks in the time given them.

The aggregate sum remaining in the treasury of the Commission as a result of these un-refunded portions of subscriptions less than \$5.00, of the excess in estimation over actual expenditures and of the unsurrendered checks will be promptly turned over to the Treasury of the Kentucky State Development Association, the parent organization of the Kentucky Commission.

The report of the Secretary of the Commission, giving in detail the operations of this association since its organization, is herewith presented. Accompanying it are various financial statements which will, no doubt, prove of interest to the general public.

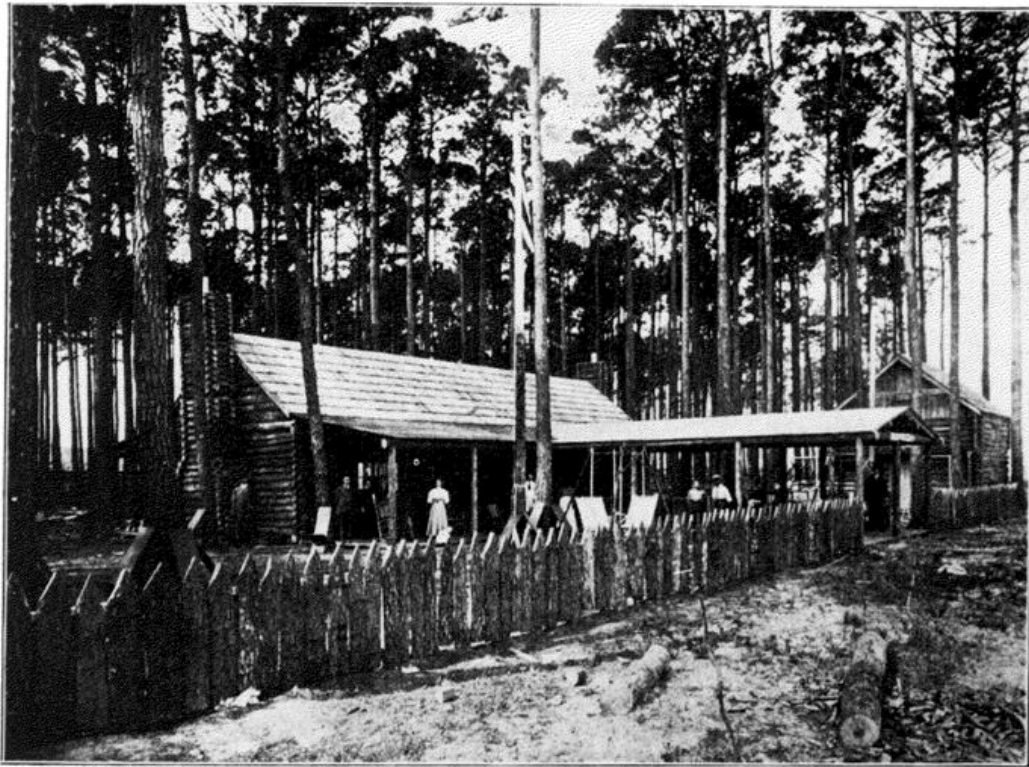
No attempt has been made to enter into minute details on either the items of subscriptions received or on moneys expended. The Commission has kept a complete record of all receipts and expenditures and the Commission books will remain open to inspection for some time to come. They may be seen at any time by application to the Treasurer or to the Secretary of the Commission. All accounts of these two officials have been audited and reported to be correct.



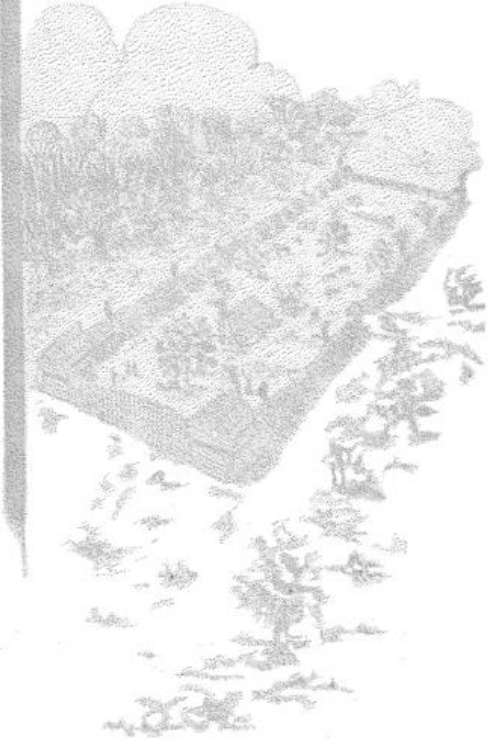
*President Kentucky Commission.*

This page in the original text is blank.





Center House and Stockade—Fort Boonesboro



This page in the original text is blank.



PLUCK and energy carried Kentucky to the Jamestown Ter-Centennial Exposition in 1907. Just as the world loves a lover, it also asserts its admiration for perseverance and determination. Here partially is the secret source of the esteem in which this State's offering was held at the Exposition. For surely no other Commonwealth there represented was more conspicuously and continuously in the public's eye and mind and on its tongue.

From the day of the selection of the members of the Kentucky State Commission it was evident to their fellow citizens that the desire uppermost in the minds of the Commissioners was that Kentucky should make at the Exposition a showing in keeping with its dignity as a Commonwealth of varied resources. Visitors to the Ter-Centennial learned early of this desire and its fulfillment and they were not miserly in the bestowal of their approval. The only reward the members of the Commission have commanded for their efforts has been the consciousness of duty faithfully performed. It was the intention to absolutely exploit the products and resources and the hospitality of Kentucky. It is sought through the related facts which follow to successfully fortify the declaration that the intent was carried out.

But in addition to this, Kentucky brought home from the Exposition collateral proof, as

it were, of the goodness of her representation in the way of eleven gold, thirteen silver and thirteen bronze medals presented by the Jury of Awards of the Jamestown Ter-Centennial Exposition. Those awards follow:

**Gold Medal.**

Kentucky Commission—White burley and dark tobacco.

Kentucky Commission—Hemp.

Kentucky Commission—Collective forestry exhibit.

Anderson Box & Basket Co., Henderson—Shipping crates and baskets.

Ballard & Ballard Co., Louisville—"Obelisk" flour.

Ballard & Ballard Co., Louisville—Industrial betterment work, illustrated by lantern slides and lectures.

Mrs. Nathalie Buchanan, Louisville—Pickles, condiments, relishes, brandied fruits, fruit cake and mince meat.

Beckwith Organ Co., Louisville— Beckwith reed organs.

Green River Distilling Co., Owensboro—"Green River" whiskey.

National Casket Co., Louisville—Burial caskets, garments, hardware and funeral directors' supplies.

Turner, Day & Woolworth Handle Co., Louisville—Axe and tool handles.

### **Silver Medal.**

Kentucky Commission—Collective exhibit of corn.

Kentucky Commission—Collective mineral exhibit.

B. F. Avery & Sons, Louisville—Plow stock.

Ballard & Ballard Co., Louisville—Booth installation.

Beckwith Organ Co., Louisville—Booth installation.

Rufus Jordan, Henderson—Tobacco.

Dr. I. W. McGinnis, Newcastle—White burley tobacco.

Moran Flexible Steam Joint Co., Louisville—Flexible joints.

National Casket Co., Louisville—Installation.

Pratt & Worthington Co., Crofton—Wagon stock.

St. Bernard Mining Co., Earlington—Grasses and grains.

St. Bernard Mining Co., Earlington—Timber specimens and photographic illustrations of forest growth.

Wadsworth Stone & Paving Co., Edmonson county—"Standard" Kentucky rock asphalt mastic, and Kentucky rock asphalt.

### **Bronze Medal.**

Kentucky Commission—Collective agricultural exhibit.

G. F. Carr, Lexington—Incubator and bread maker.

Geo. Cohn & Co., Louisville—"Three Crown" whiskey.

Mrs. Fowler, Henderson—Hair work.

German Lithographic Stone Co., Louisville—Lithographic stone.

Hawesville Hub & Manufacturing Co., Hawesville—Wooden hubs.

Henderson Public School, Henderson—Class room and industrial work.

Mrs. Sallie Price Lewis, William's Bridge—Suit of underwear.

Nolin Asphalt, Coal & Navigation Co., Edmonson county—Asphalt rock.

Ohio Valley Pulley Works, Maysville—All wood pulleys.

William Sutton, Henderson—Tobacco.

Henry Vogt Machine Co., Louisville—Model of water tube steam boiler.

Wood, Stubbs & Co., Louisville—Field and garden seeds.



Launching  
of the  
Work



SEVENTY-FIVE different States of the Union were represented at the World's Fair of 1907 with buildings or exhibits, or both. Not one of them aspiring to complete representation with both a State building and exhibits, except Kentucky, came without legislative aid, either in whole or in part. The General Assembly of this State provided for the Commonwealth's representation at the St. Louis, Chicago, New Orleans, and other expositions, but in this instance it failed. This failure was one those occasional peculiar legislative disappointments, for when the General Assembly met in January, 1906, there was a decided sentiment favorable to the proposition. It remained for the State Development Convention, held in Winchester, October 14, 15 and 16, 1906, to remedy the sin of omission on the part of the law-makers of Kentucky. The Convention did this by the election of the Kentucky Commission.

The instructions were that Kentucky must be represented at the Jamestown Ter-Centennial Exposition. One month after this convention, on November 15, 1906, the Kentucky Jamestown Exposition Commission was incorporated, and Col. J. Stoddard Johnston was elected President. At the same time the Commission elected a treasurer and a secretary. The individuals composing the organization were honored by Gov. J. C. W. Beckham with official commissions



to carry out their duties. After some three months of service as the chief executive of the Commission, Col. Johnston found it necessary to relinquish the office on account of the demands of private duties, and Mr. John B. Atkinson was elected President to succeed him. From that time on the personnel of the Commission remained as follows:

**Board of Commissioners.**

JOHN B. ATKINSON, Earlington,  
President and Director of Finance.  
CHARLES E. HOGE, Frankfort,  
Vice President and Director of State Building Construction.  
J. STODDARD JOHNSTON, Louisville.  
MALCOLM H. CRUMP, Bowling Green,  
Director of Forestry Exhibits.  
JAMES M. BENTON, Winchester,  
Director of Exhibits of Manufactures.

### Honorary Members.

HUBERT VREELAND, Frankfort,  
State Commissioner of Agriculture,  
Director of Agricultural and Horticultural  
Exhibits.

J. H. FUQUA, Frankfort,  
State Superintendent of Public Instruc-  
tion,  
Director of Educational Exhibits.

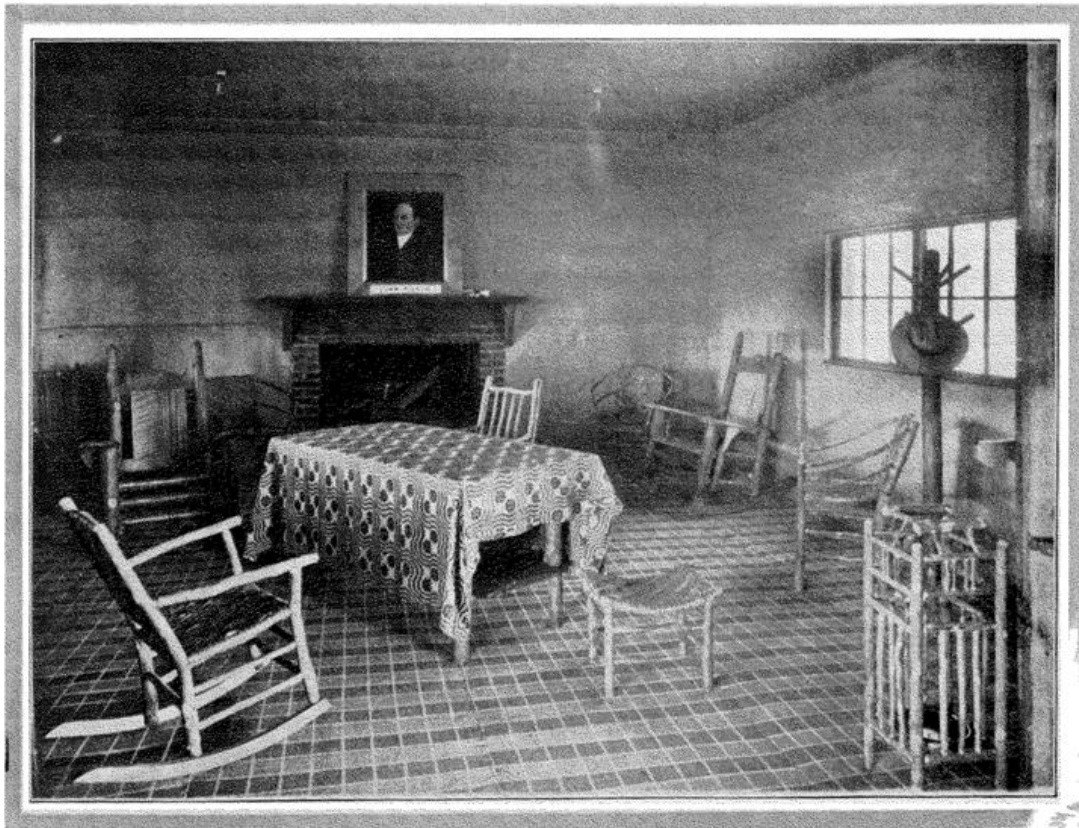
LOGAN C. MURRAY, Louisville,  
Treasurer.

CHARLES J. NORWOOD, Lexington,  
Director of State Geological Survey,  
Director of Mineral Exhibits.

WILLIAM LINDSAY, Frankfort,  
Director of Exhibits of an Historical Na-  
ture, Art, and Literature.

C. C. OUSLEY, Louisville,  
Secretary.

Even before the Kentucky Jamestown Exposition Commission was organized, in fact, at the Winchester Convention, it was agreed that the Kentucky Building at the Ter-Centennial should be a reproduction of Fort Boonesboro, the pioneer settlement of Kentucky. The Commission never for an instant wavered from this idea and the result was that the visitors who



"Sitting Room" in the Center House



This page in the original text is blank.

later came to the World's Fair were practically unanimous in the expression that this Commonwealth had there the most unique, inviting and appropriate State structure within the confines of the Exposition. So important was this decision on the part of the Commission to present to Kentuckians and the world at large this historical object lesson that in this connection it seems worth while to quote at some length from an article on the subject recently written by Col. Johnston. In this article he says:

“The Commission's decision to reproduce the Fort at Boonesborough, erected in 1775 by Daniel Boone at the mouth of Otter Creek in Madison county, on the south bank of the Kentucky river, about a mile below the bridge where the Knoxville branch of the L. & N. Railroad crosses the stream, not only comported well with their limited available means, but embodied a lesson in Kentucky history too little understood by the present generation and well worthy of such practical illustration. It is a very common error, even among our own people, to think that the West, and especially Kentucky, as the pioneer in trans-Alleghany immigration, owed its settlement to ignorant adventurers or unlettered hunters. The contrary is well illustrated in the composition of the party of six from the Yadkin river, North Carolina, of whom Daniel Boone formed one, which came to Kentucky in 1769, from

which may be said to have resulted its first permanent settlement. Boone was by no means an illiterate man without other qualities than those of the hunter or mere adventurer.

“His ancestors were Quakers, who came in 1717 from Devonshire county, England, and settled in Berks county, Pennsylvania. The substantial stone house in which Daniel Boone was born, October 22, 1733, still standing, indicates that his father was a man of substance, while it is known that a cousin of Boone’s was a professor of mathematics. Judged by the spelling of Daniel Boone in his letters extant, as compared with the present standard, he has been regarded as illiterate, but his errors were chiefly due to the difference in the methods then existing, when pigs was spelled with two g’s, complete, compleat, and the use of capital letters was not confined to proper names. Of Boone’s companions on this trip, John Finley was the ancestor of Samuel B. Finley Morse, inventor of the telegraph, and John Stewart, of Charles Stewart Todd, a distinguished officer of the War of 1812, and Minister to Russia by appointment of President Harrison. Of the others not much is known, but the fact is well attested that the party had with them a copy of ‘Gulliver’s Travels,’ which Boone in a deposition of record states that they read for their amusement.

“A further evidence of the estimate placed upon Boone’s capacity by his contemporaries,

not generally known, is the fact that he was twice a member of the Virginia House of Burgesses, the first time from Fayette county, Ky., in 1781, the year after the county was formed. The second time was from Kanawha county, Va., in 1791, to which he had moved with his family in 1786, of which two last facts there is no mention in Kentucky history. His service as legislator is verified by the official record of the proceedings of the House of Burgesses. He removed to Calloway county, Mo., in 1779, and died there September 26, 1820.

“But the history of the fort sufficiently attests the substantial character of those who first planted civilization in the West. In March, 1775, a company of nine gentlemen of substance from North Carolina, headed by Richard Henderson, prominent for his acquirements and services, bought by treaty at Watauga, in East Tennessee, from the Cherokee Indians for 10,000 pounds sterling, all that part of Kentucky lying south of the Kentucky river, estimated at 17,000,000 acres. With a view to the immediate occupation of the acquired territory, Daniel Boone was sent with a party, escorted by a company under Captain Twetty, to build a fort at the mouth of Otter creek, and when Col. Henderson and a party of fifty reached that point a month later, he found the fort nearly completed.

“It was not a rude temporary fort, but a substantial structure erected according to well

devised plans of an architect furnished by Henderson, the originals of which, with Henderson's autograph, are preserved in the Wisconsin State Historical Society at Madison, the capital. This accounts for the fact that through the four or five succeeding years the fort resisted all attempts for its capture or destruction, including two sieges, one of which was by 500 Indians and Canadians. Had it succumbed to these attacks, made as they were at this most critical period of the Revolutionary War, the frontier would have been driven back, as it was in 1795 by the defeat of Braddock, near Pittsburg, beyond the Blue Ridge, and Washington, in addition to the British lines in his front, would have had another in his rear. This emphasizes greatly the historic interest of the Boonesborough Fort as an agency not only in the settlement of the West, but in the success of the Revolutionary War."





HOSTESSES AT THE KENTUCKY BUILDING



Mrs. Mary C. Haycraft      Mrs. James Benton      Mrs. Mary A. Cunningham  
Mrs. J. P. Hobson      Mrs. W. H. Coffman  
Mrs. Charles J. Norwood      Mrs. Hubert Vreeland

This page in the original text is blank.



ONEY with which to carry on the work was of course the all-important subject for the consideration of the State Commission. It was determined to at once launch a campaign for funds. For a period of five and a half months this campaign was prosecuted with the utmost vigor. It was started with a general appeal through the press of the entire State. It is doubtful whether any Commonwealth can boast of a more patriotic press than that possessed by Kentucky. Practically without an exception, the newspapers of the entire State came forward with generosity and spirit and assisted in the enterprise. They were as persistent as they were generous of their space, and throughout the entire time funds were being sought the newspapers furnished assistance of greatest value. It was estimated that a creditable showing on the part of Kentucky could be made for \$40,000 and this was the sum sought.

The next step in the campaign for funds was a canvass through the mails and in many parts of the State by personal solicitation. Those persons who some four years before had evidenced their public spirit by subscribing to the fund sought to aid Kentucky to participate in the proposed Louisiana Purchase Exposition at St. Louis were again appealed to. Business institutions and individuals in every part of the State were asked to come to the aid of

How the  
Money was  
Raised

the movement. Under the direction of Mr. John G. Winn, of Mt. Sterling, President of the Kentucky Bankers' Association, an organized and special canvass of the banks was made. It was argued that the general development of Kentucky would be aided by the State's participation in the Ter-Centennial—thus exploiting before a new audience Kentucky's possibilities—and it was further maintained that the banks must necessarily be among the first institutions to reap direct rewards from any increased prosperity. Following this, the various commercial clubs and similar public organizations were interested in the work, and they, too, did valiant service.

With some attempt to discuss affairs in their chronological order, it is well at this place to mention the assistance given by the school pupils and teachers of Kentucky. It is one of those delightful features in connection with the movement which is worthy of much attention. After the school pupils of the State had done their work, the fact was exploited far and wide and no incident in connection with Kentucky's participation in the Exposition or its preparation for that participation aroused more widespread commendation than this exercise of patriotism on the part of these citizens of the future.

Prof. James H. Fuqua, Superintendent of Public Instruction and a member of this Com-

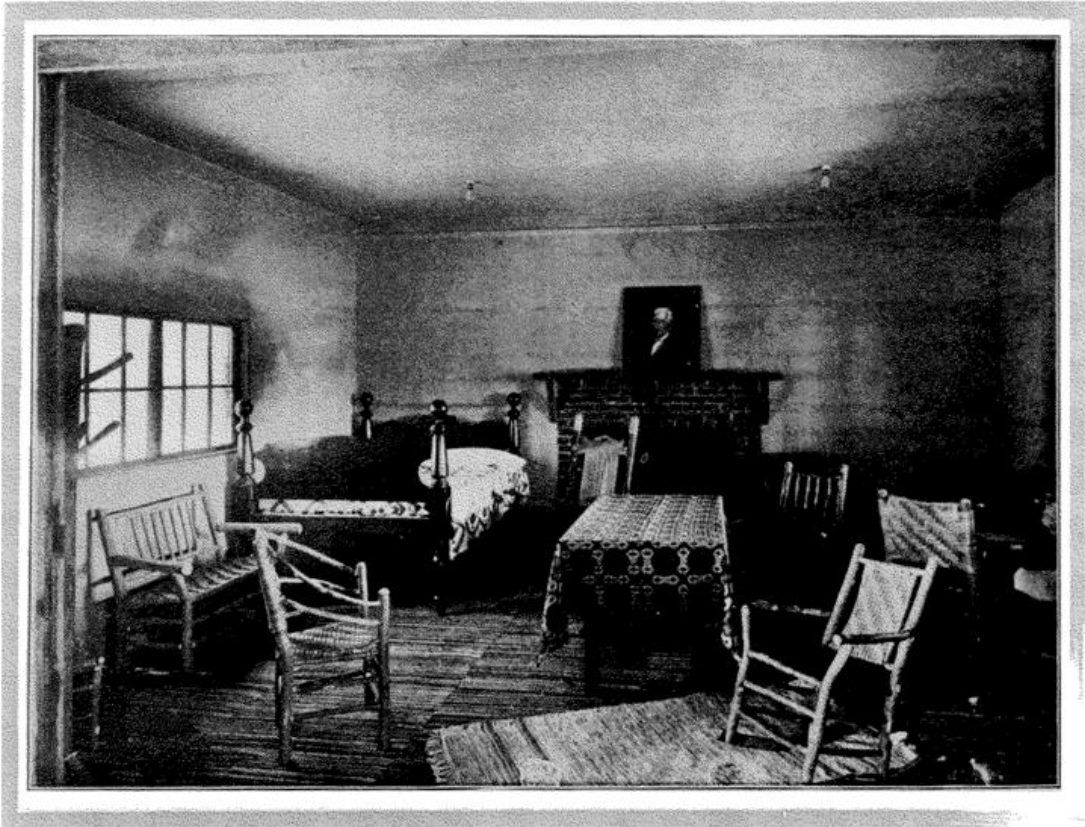
mission, set apart Wednesday, December 12, 1906, as "Jamestown and Boonesboro Day" in the schools of the State. Every teacher in the Commonwealth was requested to devote a portion of the school day to the reading of compositions and historical sketches bearing on the first English settlement in America and on events associated with the life of Kentucky's famous pioneer. At the same time the pupils of the schools were invited to bring contributions to the building fund sought by this Commission. It was provided that the children should contribute in accordance with a scale governed by ages which fixed the maximum from any one pupil at five cents. Contributions were in every instance absolutely voluntary. It was further agreed that such money as was contributed by the school pupils should be devoted exclusively towards the erection of a replica of Fort Boonesboro as the Kentucky Building. The Commission set these contributions aside in a special fund and the total subscribed by the pupils, amounting to \$778.85, was devoted entirely to the purpose announced.

Careful record was kept of the names, so far as they were obtained, of the pupils aiding in the collection of the fund and these rolls of honor furnished one of the imposing and much sought after exhibits in the State Building during the Exposition period. In a few instances it was found necessary to postpone the collection of contributions to a later date than Decem-

ber 12. One notable instance was in the public schools of Louisville where the observance came two days later. To add zest and spirit to the occasion, the Louisville Free Public Library offered cash prizes for the best compositions on the Jamestown Colony and for the best drawings and sketches of Fort Boonesboro. The entries in these contests, made by grades, were later collected and bound into several volumes which were loaned to the Commission for the Exposition period. These, too, proved a source of great delight and entertainment to the thousands of visitors who later enjoyed the hospitality of the Fort Boonesboro of 1907.

It is believed that this display of patriotic interest on the part of the school children is of sufficient importance to warrant an itemized statement of the contributions made in this manner. In later pages of this volume will be found a list, detailing the contributions as they were received from the cities, towns and counties.

It was argued from the start that Kentucky had a peculiar duty to perform in connection with this Exposition. The Bluegrass State, above all others, could not justify her absence from a world's fair held on the soil of Virginia, whose first and foremost daughter Kentucky is. This idea, coupled with a sensible commercial argument that splendid advantages would be offered for the exploitation of the products and resources of Kentucky, found many cham-



"Sitting Room" with the Old Bedstead



This page in the original text is blank.



pions throughout the Commonwealth and made notable the campaign by counties. It was one of the last stages in the canvass for funds. In some instances the counties represented the corporate homes of subscribers whose interests covered many different counties.

Leading citizens throughout the State agreed to serve as Vice-chairmen of the Division of Finance in their respective counties. Other equally patriotic and public-spirited men came to their assistance and aided in the collection of funds, not only by their individual gifts, but by energetic work as well. The result of these services is summarized in a table appearing further on and recording by counties the subscriptions to the fund.

Owing to the continuous demand made upon citizens in every part of the State and the limited time at the command of the Commission, all of these efforts had not brought forward a sum sufficiently large to enable the Board to carry out its work in accordance with its wishes and with a promise of the most fruitful results. The fiscal courts of the State were then appealed to. The subject was brought to the attention of the Fiscal Court of Jefferson county by a committee of prominent citizens of Louisville. It was pointed out that the Kentucky Statutes authorized these courts to appropriate money for enterprises which would serve to advertise their communities and to bring in immigrants. These objects were

essentially uppermost in the purposes to be promoted by Kentucky's participation in the enterprise. The result of the Committee's efforts was the appropriation of \$5,000 by the Jefferson Fiscal Court. This liberal action on the part of that organization was promptly approved by fiscal courts in other counties which came forward with liberal contributions, and thus several thousand dollars were added to the fund. Mr. James Tandy Ellis, of Lexington, aided the Commission much at this stage of the campaign by appearing before different fiscal courts.

The total contributions as a result of this campaign for funds amounted to \$23,451.43.





**B**ETWEEN the day on which the Commission was organized and incorporated and the opening of the Jamestown Exposition on April 26, 1907, less than five and one-half months elapsed. As was pointed out in a report made by the Commission to the Kentucky State Development Convention last November, it was at all times necessary for the Commission to speculate on whether its prospective finances would warrant the expenditures it desired to make in connection with the State Building and exhibits. While other State Commissions had in their respective treasuries the exact sum they expected to spend and could thus readily proceed with their plans, it was necessary, as President Atkinson explained to his associates, to cut the garment to fit the cloth. And it must be remembered the cloth was passing from the loom as the garment was being made.

During the last three months prior to the opening of the Exposition the Commission divided its attention between the canvass for funds and the collection of material for the proposed Fort Boonesboro and the gathering of exhibits. Mr. Kenneth McDonald, a Louisville architect, prepared plans and blue-prints for the building and presented them gratuitously to the Commission. He had before him sketches from original drawings by Col. Richard Henderson, the contemporary of Boone. Modifications were made to suit the location and the purposes of the Fort of 1907.

Kentucky's mineral exhibit was made up in a large measure from the collection in the Museum of the State Geological Survey. Prof. Charles J. Norwood, Director of the Survey and a member of the Commission, devoted his personal attention to the assembling of a proper exhibit, and with plans of the Mines and Metallurgy Building before him, designed the Kentucky collection. Later he sent to the Exposition Mr. A. G. Spillman, his chief assistant, to install the exhibit. Considerable attention was devoted to the collection of the forestry and agricultural exhibit by Mr. J. B. Walker, of Hopkinsville, who later assisted in the installment of the display and remained for some months at the Ter-Centennial in charge of the exhibit.

Every log in Fort Boonesboro came from Kentucky. The clap-boards with which the roofs of the various houses in the Fort were thatched came from Kentucky. Here again the generosity of the Bluegrass State's citizens was displayed, as almost all of the logs were gratuitously contributed for the purpose. Herewith is given a list by counties of those persons who thus so substantially displayed their interest in the undertaking:

Boyd County—Col. Douglas Putnam.

Christian County—Dr. J. D. Clardy, J. R. Caurdle, J. C. Gary, R. C. Gary, A. H. Wallace.

J. W. Riley, C. L. Dade, G. H. Stowe, G. L. Campbell, J. J. VanCleave, Ben Moore, Jr., W. H. Gary, D. H. Armstrong, J. B. Trice, Robert Shelton, S. F. Holloway, J. B. Walker.

Johnson County—John E. Buckingham, W. L. Mayo, James R. Turner.

Madison County—H. L. Stevens, George W. Bentley.

McLean County—L. P. Downs, Roscoe I. Downs.

Powell County—P. Y. Drake.

Rockcastle County—David G. Martin.

Warren County—John B. Floyd, J. M. Massey, G. E. Speck, W. L. Simpson, Joe W. Cole, John C. Glenn, S. P. Glenn, J. S. Hunt, Tim Miller, Tim Young, J. E. Boulton, Chas. G. Davenport, B. F. Proctor, H. P. Cartwright, Charles Roemer, Murphy Bros.

Wolfe County—John C. M. Day.

The site for the Kentucky Building was selected in December, 1906, and its dedication was conducted without ceremony. A committee, composed of Messrs. Hoge and Crump, members of the Commission, and the Secretary, visited Norfolk and unanimously agreed that the ideal spot for the proposed structure was a pine grove at the western extremity of the Exposition grounds. This land did not belong to the Jamestown Exposition Company. The owner was

the Norfolk and Hampton Roads Company, which donated the use of the grove to the Exposition Company for the period of the Ter-Centennial, and the plot had already been incorporated in the Exposition grounds. At the western extremity of this plot began the board walk which extended along the shores of Hampton Roads for a distance of about one and a half miles to the other extremity of the Exposition grounds. One of the main gates of the Exposition was established across this board walk and beyond was the "Deepwater Pier." At this pier and at Pine Beach Pier, further to the south, landed all visitors who came to the Exposition directly by boat. When the Committee had selected this site, which selection was later unanimously approved by the Commission, it became necessary to get the consent of the Norfolk and Hampton Roads Company, as well as that of the Exposition Company, for the location of the State Building here.

By this means the Kentucky Commission was given, free of charge, a right to use the space occupied by its building during the Exposition period, and three months were allowed after the close of the Exposition in which to remove the building should it become necessary. A difference was thus made between the attitude of Kentucky and that of other States towards the Exposition Company. In all other instances the State Commissions were given options



Enjoying the Burgoo on "Kentucky Day"



This page in the original text is blank.



on the land covered by their respective buildings, with a privilege of purchasing these tracts at the close of the Ter-Centennial. Later along it developed that mortgages and judgments clouded the titles to these tracts, and thus her sister States were put to more or less embarrassment which was totally avoided in the case of Kentucky.

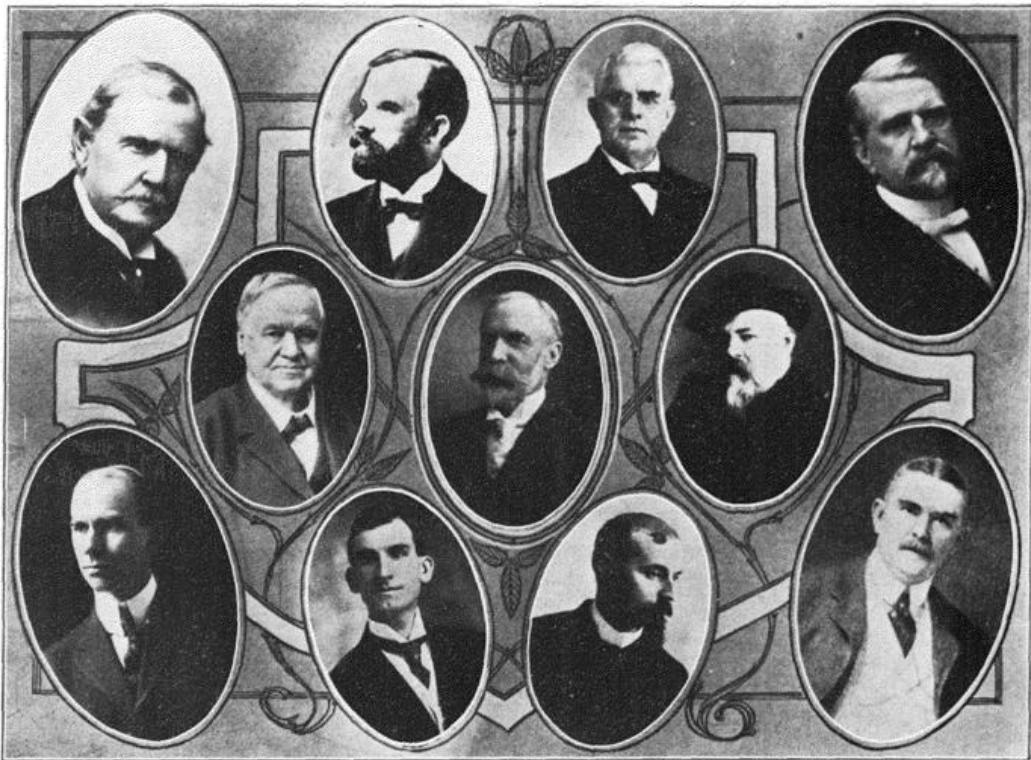
Many a time during the months which followed was the site selected by Kentucky a matter of envy for the other States. While the Exposition grounds were reasonably well shaded, no other State Building had the advantages of the Bluegrass State in this direction. They had also selected the water front for their building sites, but in the unshaded portion of the Exposition grounds. It so happened that the contour of the coast threw the Kentucky Building nearer the water's edge, by several yards, than any other State Building.

Thus by day there was always a screen against the hot rays of the sun and at night there was ever a breeze. The pine grove and its little nest of rustic log buildings, which harmonized perfectly with the surroundings, was just off the scene of that historic battle between the Merrimac and the Monitor. From the front porches of Fort Boonesboro a splendid view could be had of the sea where this memorable tragedy of the late war was enacted. On a clear day it was possible to easily make out the water front buildings of Newport News, some eight

miles away. The spires and chimneys of Hampton and Phœbus, across Hampton Roads, could easily be seen and diagonally over this broad body of water were Old Point Comfort and Fortress Monroe. A few rods across the channel from the latter was Fort Wool, the island fortress sometimes known as the Rip Raps, which figured prominently in the activities of the Civil War.

When the battleships of Uncle Sam's navy and the visiting navies assembled in Hampton Roads on April 26, and again on June 10, it was quickly discovered that the best vantage point was from the Kentucky Building. The great array of sea fighters formed in columns of two and stretched from Old Point in a crescent across Hampton Roads to a spot removed scarcely more than two miles from Fort Boonesboro. Visitors to the Kentucky Building were thus given a treat that had never before been offered in history. As imposing as was the spectacle by day, it became truly wonderful, even enchanting, when the men-of-war were illuminated at night and, with thousands of electric lights, the iron monsters appeared as toys of the giants outlined against the inky blackness. The battleship "Texas," the cruiser "Brooklyn," one of the modern monitors, as well as the old monitor, "Canonicus," were stationed at the Exposition during the entire period, and these vessels lay to the west of the Kentucky Building and in constant and easy view of it. It might be truthfully said that Kentucky had the stage box at the most interesting drama of the sea ever presented in times of peace.

THE KENTUCKY JAMESTOWN EXPOSITION COMMISSION



J. Stoddard Johnston      James M. Benton      James A. Fuqua, Sr.      Charles E. Hoge, Vice-President  
William Lindsay      John B. Atkinson, President      Malcolm H. Crump  
C. C. Ousley, Secretary      Hubert Vreeland      Charles J. Norwood      Logan C. Murray, Treasurer

This page in the original text is blank.



UPON the plans prepared by Mr. McDonald, Mr. C. T. Holtzclaw, of Hampton, Va., an architect and contractor of prominence in Tidewater, erected Fort Boonesboro. As has been indicated, the logs used in the building were all sent from Kentucky. It was at first the hope of the Commission that the several houses might be constructed of timbers collected from one neighborhood, thus giving a local significance to each portion of the Fort. Delayed freight shipments, and a lack of uniformity in the size of the logs, prevented the carrying out of this plan. It was of course necessary to use the larger timbers for foundation purposes and construction had to proceed as the various cars of material arrived.

The center houses were the first to be completed. These were laid out a little to the west of the center of the stockade, later constructed. The two houses were built of logs twenty feet long, thus making rooms some eighteen feet square, interior measurement. These twin buildings were set twenty feet apart and were covered with a single roof, which made a covered area, twenty feet square, between the two. At the eastern and western ends of the building were chimneys constructed of small logs and poles. Some of these poles came from Boone's Trace, in Madison county, and grew within a few yards of the identical spot on which Daniel Boone and his companions erected the first fort, more than a century before.

Large fire places, lined with brick and having for mantelpieces huge slabs of oak, were constructed for the interior of each room and in the fall months proved one of the most inviting spots to be found on the Exposition grounds as great fires crackled over the hearths. The walls of these two rooms were lined with burlap of a natural color.

The decorations of the rooms, which were intended as the chief centers where visitors assembled, were extremely simple and as far as possible in keeping with the standards of pioneer days. It was, however, early decided by the Commission that a faithful adherence to pioneer requirements should be made subservient to modern conveniences, and therefore, instead of tallow dips and puncheon floors, there were electric lights and carpets.

A portrait of Daniel Boone, painted by Mr. Nicola Marschall, of Louisville, hung above one of the mantelpieces. In the same room there were portraits in oil of Simon Kenton and John Filson. These were the work of another Louisville artist, Mr. Marvin Eddy. An old rifle, furnished by Mr. C. L. Adler, of Louisville, adorned the wall of this room. In the other room there was a drawing of the old Fort at Harrod's Town, which later became the thriving Kentucky city of Harrodsburg, and which bore the distinction of being the first continuous settlement in the State. Two old prints of Harrodsburg were also hung in this room. These

three pictures were furnished by Judge W. W. Stephenson, of Harrodsburg. Over the mantelpiece was a rifle which, for something like one hundred years, had been in the possession of the family of Mr. W. B. Richards, of Eastern Kentucky. There was also exhibited a powder horn, a century old, worn by Hiram Pepler, an Indian fighter. This horn was furnished by Mr. Tinsley Spoonamore, of Stanford, Ky., a descendant of Captain Pepler.

Rag carpets covered the floors of each room. In one there was a handsome bedstead made of wild cherry seventy-five years ago. This bedstead, like some of the artistic draperies in the rooms, was furnished by Mrs. Jennie Lester Hill, of Berea College, Madison county. Instead of slats, the bed was provided with "springs" of rope. It was covered with a "sunflower" quilt of a former day, and proved to be an exceptionally attractive exhibit. The fame of this bed spread far and wide. Towards the close of the season, when fires were started, the bed was removed in order to make room. It remained away only two days. Visitors brought their friends expressly to see the relic, and it was necessary to reinstate it in order to meet the demands of these sight-seers. Associated with the history of the old bedstead was the information that the pioneer who made it first sold it for "a cow, a calf and a pet deer."

The furniture for these rooms and porches and the entire Fort was of the old hickory pat-

tern. It was both rustic and comfortable and particularly appropriate for its surroundings. The doors opening from each of these main rooms onto the intervening area were of rough boards, with old-fashioned wooden latches, the strings of which always hung out. The openings were also adorned with portieres of homespun material, furnished by the students of Berea College. The hangings for the doors and windows and the covers for the tables were made of woolens and linens, woven in old-time patterns like the "catspaw and rattlesnake trail" coverlets of our grandmothers.

Running the full length of the center houses on the north and south were verandas, some twelve feet in width. In line with the central area, the verandas were continued on each side to the stockade gates. These latter verandas were twenty feet in width, the roofs being supported by upright logs. In this manner was afforded a great shaded platform which was filled with rustic furniture and which always presented an inviting place for the weary visitor to rest. A tank of ice water was kept constantly on tap.

A provision in the agreement with the Norfolk and Hampton Roads Company was that no trees should be destroyed in the erection of Fort Boonesboro. This necessitated nice measurements on the part of the contractor in laying out the structure. It also resulted



in three of the trees growing through the floors and roofs of the verandas, materially adding to the rustic beauty and uniqueness of the building.

The stockade was 200 feet long by 100 feet wide, and built as a perfect rectangle. While in the original Fort the stockade was some twenty feet in height, it was here abbreviated to a fence of pine slabs not more than a yard in length. This was done in order that sea and land breezes might have full play across the enclosure and that an unobstructed view could be had from within and without.

At each corner of the stockade was a "block house." These four structures were built of logs about eighteen feet long, were square and two stories in height. The logs for the lower stories were slightly shorter than the others, giving the block house effect by the overhanging of one side of the upper story. Clap-boards were here also used in making the roofs. On the enclosure side of each building a small veranda was built on a level with the second floor, making a balcony sufficient in width to allow of the use of chairs. This balcony was reached by a door from the second floor. The windows in the corner houses opened onto the Fort exterior and were small, rectangular affairs, with the greatest length running parallel to the ground. The "block houses" each opened by one door into the stockade enclosure.

The house at the northeast corner of the stockade was used as the Commissioner's cottage. This was occupied from time to time by the different members of the Commission and by the hostesses. The house at the southeast corner was converted into an office on the first floor, the second story being used as a place of residence by the Secretary. At the southwest corner was a block house used as a dining room on the first floor, with servants' quarters above. The remaining corner building was used as a lodging house by representatives in charge of the State's exhibits. All of the logs used in the construction of the "block houses," like those in the main building, were shipped from Kentucky. Between the two "block houses" at the eastern end of the Fort was a pine-slatted rustic structure constructed as a public lavatory. A small building was erected on the south side of the Fort adjoining the dining room and was utilized as a kitchen.

Chief among the objects of the Fort enclosure was an old well and sweep. The well was supplied with a pipe and faucet connected with the Norfolk water supply. Logs driven into the ground furnished the well enclosure. Chairs and wooden swings and rustic seats were distributed under the half hundred trees that grew from within the stockade.

Four gourds hung from the rafters of the porches. During warm days the big guest book of

the building was kept on a small table on the verandas. A total of nearly 60,000 autographs, distributed throughout three registers, is an indication of the popularity of the place. It is believed that fully 40,000 additional persons, who failed to register, visited the building during the seven months of the Ter-Centennial. On one of the big porches was a register designed especially for boys. This was provided by an eastern publication which had launched an organization known as the "Sons of Daniel Boone" and wholesome literature for youths was freely distributed at this table. There was a piano in one of the center houses and the tables were stocked with the daily newspapers of Kentucky and with volumes by Kentucky authors.

Two flag poles, thirty feet in length, stood in front of the building. From one of these flaunted the flag of Kentucky, and from the other the Stars and Stripes. From early morning until dusk each day these colors were flung to the breeze. An incident in connection with the flying of these flags is worth mentioning. A well-groomed stranger, who did not give his name or residence, came to the building one July morning and announced that he had walked a distance equal to three or four city blocks purposely to congratulate Kentucky on the fact that it seemed to be the only State at the Exposition which displayed with equal prominence its own flag and the National emblem. Two smaller flags, furnished by the Daughters of the

Revolution Chapter of Hopkinsville, were used as ornaments for the front veranda, and another handsome sample of Old Glory, loaned by Mrs. Will S. Hays, of Louisville, was one of the dining-room decorations.





Dining Room—Fort Boonesboro



This page in the original text is blank.



Q WING to delay in the arrival of building material, Fort Boonesboro was not entirely completed when the Exposition opened on April 26. The main structure, however, had been finished and this was opened to the throngs of visitors on that day. The weather was warm and pleasant and it then became evident that the spot was destined to prove a popular one during the months to come.

The first person claiming the honor of registering at the Kentucky Building was the Hon. Clarence E. Woods, Mayor of Richmond, Ky. It was indeed a happy coincidence that this honor should have come to the chief executive of the chief city in Madison county, the home of the original Fort Boonesboro. Construction work proceeded rapidly and within less than a week after the gates of the Exposition were opened, it was announced that the Kentucky Building was finished. Informal dedicatory exercises were held on Friday, May 17, only two other State buildings having been thrown open at that time.

Mrs. Mary C. Haycraft, a niece of Mr. Logan C. Murray, Treasurer of the Commission, was the first hostess at the building and presided over this function. A light luncheon was served, there was music by a Swedish orchestra in costume, and the 400 or 500 guests of the day included many prominent representatives of the Exposition Company, together with Com-

Kentucky  
Hospitality  
Extended

missioners and hostesses from sister States. From that day until the close of the Exposition on November 30, the gates of the Kentucky Building were opened at 8 o'clock each morning and lights were never turned off before 10 o'clock in the evening. It was the only State Building on the grounds that threw its doors open after nightfall to all visitors, and was the only one to which the public had access on Sundays. The latter fact was due to the building's position to the west of the Inside Inn. While the Exposition grounds were closed to the public on Sunday, entrance was given through a special gate to the Inside Inn and the Kentucky Building.

Mrs. M. A. Cunningham, of Henderson, became hostess on June 4. During her visit to the Kentucky Building one of the most pleasurable functions of the summer took place. It was the dedication of the Pokahuntus Bell. This ceremony took place on June 15. The Pokahuntus Bell was cast and erected under the auspices of an association bearing that name. Mrs. Anne S. Green, of Culpeper county, Va., was President of the Association. She enlisted the interest and co-operation of about one hundred other ladies in a score or more of States for the purpose of preparing a memorial of the Exposition in the shape of a bell. The souvenir was made in part of fragments of the Columbian Bell, of Chicago World's Fair fame, and of relics of great historical value gathered from various points. The historic metal was cast



into a beautiful bell weighing about 500 pounds. The bell is twenty-nine inches in diameter at the botom. On one side is the inscription:

The Bell Pokahuntus.

The Pokahuntus Bell Association, Anne S. Green, President.

These mingled metals, rich and kind,  
Their purpose high, intent sublime.  
Jamestown, 1607, 1907. Amen.

The reverse side of the bell presents the following inscription:

The Dominion, 1607; Virginia, 1907.  
Blest be the tie that binds  
All faithful hearts together,  
Through songful summer time,  
Through stormy winter weather.

It was originally intended that the bell should hang in the reservation surrounding the Virginia Building. When members of the Association had looked over the grounds they unan-  
imously decided that the most appropriate surroundings were to be found at the Kentucky

Building and permission was asked of the Kentucky Commission that the bell might hang in front of Fort Boonesboro. Consent was readily given and a rustic belfry of four upright logs was erected. The dedicatory exercises were attended by Mrs. Green and other members of the Association, while addresses were made by the Hon. Claude A. Swanson, Governor of Virginia; Mr. T. J. Wool, of General Consul for the Exposition Company, and others. There was music by one of the Exposition bands, the Fort was gaily decorated in flags and bunting and over 500 persons witnessed the exercises. At the close of the Exposition the Pokahuntus Bell was removed to Jamestown Island, where it has a permanent home on the reservation surrounding the historic site marked by the famous old Jamestown Church.

It is probably worth while recording the fact that Fort Boonesboro had a more or less narrow escape from destruction by fire early in the morning of June 26. A fierce conflagration swept over Pine Beach, as the territory immediately adjoining the Exposition grounds at the western extremity is called. The fire raged furiously for the space of three or four hours and swept hotels, store-rooms and other buildings from a territory covering a total of twenty acres. The Exposition Fire Department worked valiantly and successfully to save the Inside Inn and adjacent buildings within the Exposition grounds. At one time the wind changed and brought

the sparks in a threatening manner towards Fort Boonesboro. Occupants of the Fort supplied food and refreshments to the fire fighters and took care of two or three individuals who were overcome by the heat while attempting to rescue their belongings from the small hotels which went up in flames.

Mrs. Hubert Vreeland became hostess on July 1. During that month the three Kentucky Regiments, National Guards, encamped at the Exposition. These regiments came in the following order, each spending eight days at the World's Fair: First Regiment, commanded by Col. W. B. Haldeman, of Louisville; Third Regiment, commanded by Col. Jouett Henry, of Hopkinsville; Second Regiment, commanded by Col. J. Embry Allen, of Lexington. The Kentucky Regiments participated in the camp of instruction maintained as one of the features of the Exposition.

Kentucky was one of the first States to observe a day at the Exposition. Tuesday, July 16, was selected as the date. A Kentucky barbecue was given. It is not strange that so unique a form of entertainment should have attracted much attention and over 2,000 persons visited the building on that day. This was almost double the number of visitors at any other State building in celebration of a similar occasion.

Many days were devoted to the preparation of the function. The pine grove in the rear of Fort Boonesboro was fenced off and here the meat was prepared and the burgoo was made. Load after load of wood was hauled. Immense cauldrons were used for the cooking of meats and burgoo and long tables were laid out for the accommodation of the guests. Mr. R. C. Hieatt, Sheriff of Franklin county, gratuitously gave his services to the Commission as master of ceremonies for the barbecue. The Third Kentucky Regiment was at the Exposition at the time and the Regimental Band furnished music. The Earlington Company, under the command of Capt. Price, was given the place of honor as special guard for the enclosure where the feast was served.

Following the barbecue, exercises were held on a platform within the stockade inclosure. President John B. Atkinson, of the Kentucky Commission, presided. The orators of the day were the Hon. William Rogers Clay, of Lexington, and the Hon. A. Y. Ford, of Louisville. The Hon. Harry St. George Tucker, President of the Exposition Company, delivered the address of welcome. A distinguished guest on this occasion was the Hon. Alton B. Parker, of New York, former Democratic candidate for the Presidency, who, at the time, was visiting Mr. Tucker. Souvenirs of the event were attractive buttons, bearing a picture of the main building at Fort Boonesboro, and the date of Kentucky Day.

Mrs. James M. Benton, of Winchester, became hostess on July 15. The next hostess was Mrs. J. P. Hobson, of Frankfort, who arrived at Fort Boonesboro on August 15.

Winchester was the only Kentucky city which had a day to itself. The thriving capital of Clark county sent over 150 prominent citizens for the occasion, and no city throughout the country was able to present so attractive a celebration during the Exposition period. The day was observed on August 23, when an outdoor drama was enacted. It was a reproduction of the kidnapping of the Calloway girls and Jemima Boone from the original Fort. The historic event was faithfully reproduced to the great interest and delight of a goodly throng which assembled to witness the exercises. Miss Goldie Perry played the part of Jemima Boone. Miss Ruth Searcy represented Frances Calloway and Miss Annie Lee Sutherland took the part of Elizabeth Calloway. The young women are all residents of Winchester. The Hon. A. F. Byrd, and the Hon. J. F. Garner, both of Winchester, delivered notable addresses on this occasion. The Winchester Committee, of which Mr. R. B. Perry was chairman, provided a luncheon for its guests, following the exercises.

Mrs. M. H. Crump, of Bowling Green, became hostess at Fort Boonesboro on September 4. During her visit to the Kentucky Building one of the delightful social functions of the sum-

mer was held. It was a Japanese tea given on the spacious verandas of the rustic building. The main house of the Fort looked particularly attractive in decorations of American and Japanese flags, and a liberal coloring of Japanese lanterns.

The tea was given in honor of the visiting ladies with the Grand Council, Improved Order of Red Men, which at the time was holding its national convention in Norfolk. Louisville was making a determined effort to secure the Long House, or permanent headquarters of the national order, and a committee, composed of members of the Louisville Commercial Club and prominent representatives of the Red Men Order in Kentucky, had opened at the Monticello Hotel in Norfolk headquarters from which was conducted the campaign in the interest of the Kentucky metropolis. It was decided by the Kentucky Commission that this effort to bring a worthy institution to the Bluegrass State might be given some aid through this little courtesy to the visiting ladies. At the same time the Commission through its Secretary, was bending every effort to assist the committee sent to Norfolk. It may be recorded that the canvass made in the interest of Louisville resulted successfully.

Mrs. James A. Fuqua assumed the duties of hostess on September 15. Beginning with Sunday September 25, "Golden Rod" week was inaugurated. This flower has been largely



One of the "Block Houses"—Fort Boonesboro



This page in the original text is blank.



adopted as the official flower of Kentucky, as it is the national flower. The broad fields around Hampton Roads were brilliant with the yellow blossom during the latter part of September and wagon loads of it were carried to Fort Boonesboro for decorations, and the log pillars supporting the porch roofs were entwined with it. Everywhere within and without the building massive bouquets of the blossom were on display. Fresh installments were added each day of the week and several wagon loads of the flowers were used. The decorations presented a wonderfully attractive appearance and drew many visitors to the Fort. As souvenirs for the week there were distributed several thousand cards with a picture of the building and each card bearing a sprig of golden rod. On the cards was the following inscription:

Golden Rod, the Flower of Kentucky.

The State which offers golden opportunities.

You and your friends are always welcome at Fort Boonesboro (Kentucky Building).

Visit the Kentucky exhibits in the States Exhibit Palace and the Mines and Metallurgy Building.

The cards were much sought after as souvenirs and were used by many as mailing cards to their friends at home.

Mrs. M. H. Coffman, of Georgetown, niece of Col. J. Stoddard Johnston, arrived on October 1, to act as hostess.

On Saturday, October 5, the Kentucky Commission had as its guests the orphans of Norfolk and vicinity. Probably no event during the summer was a source of more satisfaction to the members of the Board and drew forth more favorable comment than the little courtesy shown by Kentucky to the parentless children of Tidewater, many of whom enjoyed their first visit to the Exposition as the result of this State's generosity. Children to the number of 150 were given an outing lasting the entire day and filled from early morning to evening with strenuous enjoyment.

The youngsters were assembled at the Old Dominion Steamship Company's wharf in Norfolk and taken to the Exposition on a steamboat. Landing at Deepwater Pier, they were transported in miniature railway trains directly to the Kentucky Building. There monster automobiles waited to take them across the Exposition grounds to the Filipino Village, where the sight-seeing stunts commenced. A tour of the Government exhibits came next, and this brought the little visitors at high noon back to the Kentucky Building.

The occupants of the Fort had been busy during the absence of the youngsters. The day

was ideal and long rows of chairs had been arranged for the orphans under the shade within the stockade. They lost no time in vigorously falling upon the luncheon which had been prepared for them. The menu included wholesome ham sandwiches and pickles, bread and butter with old-fashioned jam, pumpkin pie and milk. Cakes and watermelon concluded the repast.

After posing for a photograph, the children resumed their sight-seeing tour. The attractions of the Warpath were next in order. The Wild Animal Show, Japanese Theater, Scenic Railway, Ostrich Farm, Deep Sea Divers and Esquimo Village were visited in the order named. The children re-assembled at the Kentucky Building where the miniature railway trains were in waiting for them and, in order to combat the pangs of hunger on the homeward trip, each youngster carried away with him a bag of pop corn and fruit. The deep appreciation in which the day's events were held by the children is illustrated in the following letters received by the Commission:

ST. MARY'S ASYLUM, NORFOLK, VA., October 6, 1907.

*To the Board of Kentucky Commissioners:*

GENTLEMEN:—I am deeply grateful to you and each member of the Kentucky Commission for the day of enjoyment you gave to our dear little orphans. It will be to them one of golden remembrance, since its every moment was spent in pleasure and happiness.

To the "Good Master," the Father of the orphans, we present our petitions for the temporal and spiritual welfare of our good, kind Kentucky friends. He who has promised to receive as done to Himself what we do for the least of His little ones, will not let go unrewarded the charity of the members of the Kentucky Commission.

"May God bless you," is the prayer of the Sister and children of St. Mary's Asylum.

Sincerely and gratefully yours,

(Signed) SISTER OLYMPIA.

*To the Board of Kentucky Commissioners :*

GENTLEMEN:—I speak for each and every one of the Holt Street Orphan Asylum when I tell you that we have never enjoyed anything more than we did the delightful outing you gave us Saturday. Every moment of it was thoroughly enjoyed, and I believe there has never been a happier crowd of sight-seers at the Jamestown Exposition, and we want you to know how much we appreciated your kindness to us. We will always remember it as one of our brightest days. If any of you ever come to Norfolk, come to see us and we will give you a hearty welcome

Very sincerely yours,

ONE OF THE GIRLS.

(Signed) ANNA M. HARRIS.

Holt Street Orphan Asylum, October 6, 1907.



Feeding the Orphans on October 5, 1907



This page in the original text is blank.

182 WOOD STREET, NORFOLK, VA., October 9, 1907.

*Kentucky Board of Commissioners:*

GENTLEMEN:—The Board of Lady Managers of the Holt Street Female Orphan Asylum desires me to express their gratitude to you for the royal way in which the children of that institution were entertained by the Kentucky Commission at the Exposition on Saturday, Oct. 5. I don't think that the children have ever had a day's outing that they enjoyed more, and the remembrance of it will linger with them always. On reaching home Saturday some of them remarked that they were tired, but their faces fairly beamed as they added, "Oh, what a fine time we had!" I think could you have seen the glint in their eyes you would have felt repaid for all the trouble involved in the personal supervision of such an enterprise.

The ladies request you to express their thanks to all who in any way added to the pleasure of the day, remembering that even a cup of cold water to one of His little ones is not overlooked by our own Heavenly Father, but will bring down its own blessing. Again thanking you, I remain,

Yours sincerely,

(Signed) MRS. ROBERT STEPHENS, Sec.

*Kentucky Board of Commissioners:*

GENTLEMEN:—I feel that I must *again* thank you and those who so kindly aided you for the *delightful* day given our children. They agree "they never had such a good time." In

the years to come "Children's Day" and the Kentucky Commission will figure in their happiest recollections.

Very truly yours,

(Signed) MARION N. FISHER, Matron of "The Jackson Orphanage."

October 7, 1907.

Mrs. Charles J. Norwood, of Lexington, became hostess on November 1. The last month of the Exposition was marked by no social or other events of consequence at the Kentucky Building. The weather was beginning to grow cool and wintry and the roaring log fires of the Fort bespoke a hospitality that was cordially enjoyed by all visitors.







WHILE Fort Boonesboro exemplified the old-fashioned hospitality of Kentucky and at the same time presented a faithful historic lesson, the State looked after its commercial interests by offering to the Exposition visitors exhibits of its products and resources calculated to arouse general interest and to give a fair idea of the wonderful advantages presented by the Commonwealth.

The States' Exhibit Palace was in many respects the most important Exposition building. A score or more of different States here made imposing exhibits and Kentucky was included in the number. The building was an innovation in Exposition enterprises and proved one of the attractions sought out by visitors. Kentucky had in this building Section No. 23, a space forty feet wide by sixty feet long in the center of the southern wing of the great palace. The location was an excellent one. Across the aisle, to the west, was Ohio's exhibit. To the north was Maryland's, and to the east and south, Louisiana had a display.

The Kentucky section was surrounded by an attractive fence containing forty-seven varieties of dressed and polished native woods. The western end of the enclosure was made exclusively of wild cherry. The Forbes Manufacturing Company, of Hopkinsville, furnished the eastern end of the fence. This was composed of two long panels, representing the sides of a wagon bed, with half wheel contrivances at each end.

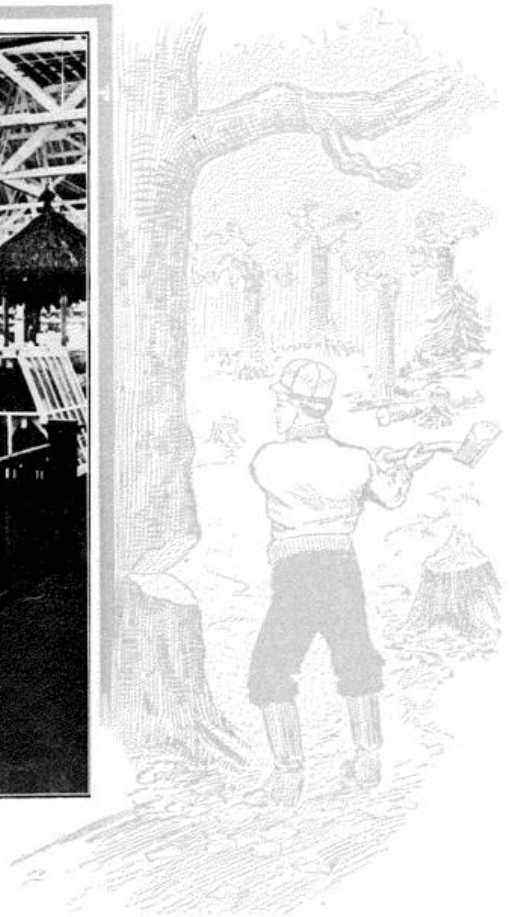
Kentucky's agricultural and forestry products were displayed within the enclosure. Three large white crates, set on the trunks of monster trees, furnished the frame work for a display of beautiful transparencies of Kentucky farm, mine and forest scenes. There were 122 of these pictures, and each picture was framed in a different variety of Kentucky wood. This imposing exhibit, as well as the major portion of the fence and two triangles composed of polished Kentucky planks, was provided by the St. Bernard Mining Company of Hopkins county.

The display just described occupied the northeast corner of the rectangle. In the southeast corner was a hexagonal display of axe and tool handles, furnished by the Turner, Day & Woolworth Handle Company, of Louisville. In the southwest corner of the Kentucky section the chief figure was an attractive booth, some twelve or fourteen feet high, displaying Kentucky hemp. A placard announced that ninety per cent. of the hemp produced in the United States comes from Kentucky. This display was made up in a large measure by samples furnished by the Agricultural Experiment Station at Lexington. An individual display of hemp was provided by Mr. H. M. Matthis, of Fayette county.

The tobacco display, with a booth similar in size and shape to the hemp booth, was the



Transparencies Framed in Native Woods of Kentucky—Forestry Exhibit



This page in the original text is blank.

feature of the northwest corner of the exhibit space. Samples of black and white burley tobacco made up the display, while a monster "twist," weighing over 100 pounds, was made one of the attractions of the exhibit. The dark tobacco was furnished by Mr. J. B. Kennedy, of Paducah, and Mr. R. C. West, of Hopkinsville, and the white burley tobacco was furnished by the Clark County Equity Warehouse Company and by exhibitors from Henry, Owen and Mason counties.

The centerpiece for the Kentucky section was a magnificent pyramid showing Kentucky seeds and grains displayed in glass jars. This exhibit, together with the display cases and show cases filled with grains, was furnished by Wood, Stubbs & Co., of Louisville, and by the Agricultural Experiment Station at Lexington.

The Ohio Valley Pulley Works, of Maysville, furnished an exhibit of wooden pulleys. The Anderson Box & Basket Company, of Henderson, displayed shipping crates. Plow stock was exhibited by B. F. Avery & Sons, of Louisville, and wagon stock by Pratt & Worthington, of Crofton. A magnificent poplar plank, over fifty inches in diameter, was sent by the Swann-Day Lumber Company, of Clay City. A fine display of grasses was made by the St. Bernard Mining Company, of Hopkins County, and wheat and oats in stalk were exhibited by the Agricultural Experiment Station at Lexington.

During the latter months of the Exposition, Mr. Joseph W. Morris, of New Castle, represented the Commission in charge of the Kentucky exhibit. He was constantly on hand answering the queries of visitors and ably assisting in exploiting the State's products and resources.

The other collective exhibit made by Kentucky was in the Mines and Metallurgy Building. This State was assigned Section No. 3, a space one hundred and ten feet long by ten feet in width, at the eastern end of the building. In many respects it was the most complete mineral display ever presented by Kentucky. Thirteen handsome Flemish oak show cases were used in making the display. In addition, there was a large case devoted exclusively to building stone and another containing a topographical map of Kentucky. A pyramid was devoted to the display of crude petroleum and its products. About one dozen samples of Kentucky coal, in block were neatly arranged along the floor in front of the mineral cases.

It has already been pointed out that sixty-nine different counties in Kentucky in some manner furnished financial aid to the movement having for its purpose State representation at the Ter-Centennial, and a total of over 100 counties were participants in some way at the Exposition. It will no doubt be a matter of interest to repeat the manner in which the different counties were exploited.

More individual counties were represented in the State's mineral exhibit than anywhere else. Allen county's mineral resources were exploited by several fine specimens of kaolin. Ballard county had coal, lignite, ocherous clay, tile clay, sands and tertiary clay. Samples of handsomely painted manufactured pottery accompanied the last-named exhibit. Ballard county also laid claim to fame in connection with the enterprise because the Fiscal Court of the county was the first to subscribe and pay in its entirety the quota asked from the various counties.

Barren county had samples of crude petroleum and its products, rough and polished onyx, clay ochre, limestone, shale and iron ore. Bath county was also represented with a petroleum exhibit and samples of its iron ores. Bell county had ochre, sandstone and iron ores, and also some splendid samples of its cannel and bituminous coal.

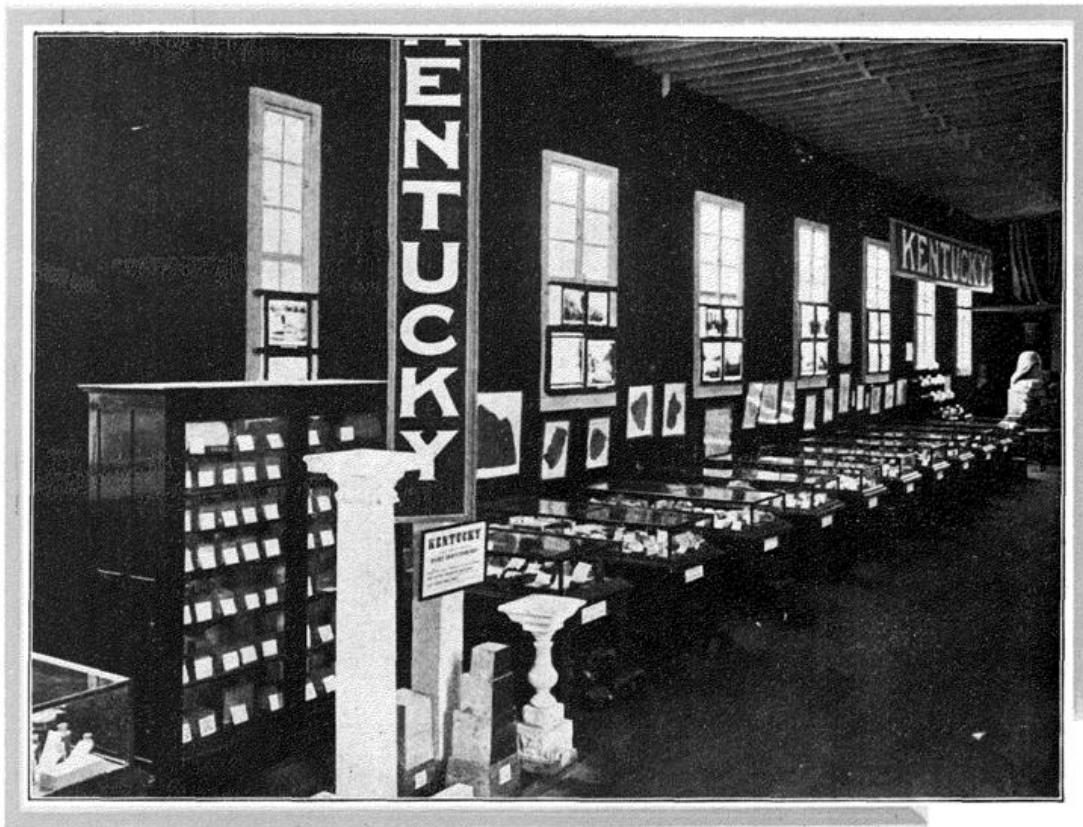
Some of the finest corn at the Exposition came from Boone county. Bourbon confined her exhibits to limestone, sphalerite, barite and galena. In addition to the logs from her forests, which were seen in the Kentucky Building, Boyd county had samples of iron ores and coal, the latter of both cannel and bituminous varieties. Breckinridge county presented a creditable display of asphalt, kaolin, sandstone, marls and sands. Butler county was represented with iron ores and coal.

In the State's mineral exhibit were a number of handsome pieces of pottery manufactured and decorated in Kentucky. Two pitchers which aroused considerable comment were made from clays found in Calloway county. Pipe, plastic and fire clays were included in that county's exhibit. Caldwell county had oolitic limestone, ochre, marl, barite and fluorite. Molding sands, adapted for the manufacture of heavy and light machinery, were shown from Campbell county. Plastic clays and clay products were sent from Carlisle, while Carter county had exhibits of asphalt, iron ores and various clays.

Christian county was well represented. Many logs used in the construction of Fort Boonesboro were furnished by farmers in that county. There were samples of excellent corn and wheat and tobacco from the farms around Hopkinsville, and the factories of the county seat sent wagon stock, swings and yard chairs to help along with the State's contribution to the Exposition. Limestone, fluorite, barite and calcite and galena from Christian county were found in the mineral exhibit.

Clark county citizens from the first took especial interest in the enterprise. They contributed liberally in money and from the opening of the Exposition citizens of the wealthy Bluegrass county liberally supported the Ter-Centennial with their attendance. In proportion





A Portion of Kentucky's Mineral Exhibit



This page in the original text is blank.

to the population, no county in the State was so well represented at the Exposition. Some of the finest white burley tobacco in the Kentucky exhibit came from Clark county. A miniature hemp break from an enterprising Winchester firm was one of the novelties of Kentucky's hemp exhibit. Plastic clays, ochre and limestone were among the county's contributions to the mineral exhibit.

Clay county furnished bituminous coal and Clinton county had crude and refined petroleum as well as limestone. Almost an entire case was filled with mineral specimens from Crittenden county. These included coal, iron ores, porcelain clays, kaolin, various kinds of sand, fluorspar, barites, fluorite and calcite. Cumberland county had a display of crude petroleum and Daviess county put tile and brick clay on exhibition. An Owensboro distillery was represented with an exhibit in the Food Products Building. Two extensive asphalt exhibits were made by companies operating in Edmonson county and iron ores were also exhibited from that section. Elliott county sent coal and ochre. Estill county is rich in petroleum, iron ore, ochre, shale and limestone, judging from the exhibits that were made.

Fayette county and the State in general were represented through the Agricultural Experiment Station. This institution furnished excellent exhibits of wheat and other grains and

offered the hemp exhibit which probably aroused more attention than any other display in the States' Exhibit Palace. An interesting device was also furnished by the Experiment Station to show various strata of soil through a certain section of Fayette county. Limestone, fluorspar, barites and calcite were contributed by the county to the mineral exhibit. Floyd county had petroleum and its products and iron ores in the mineral exhibits.

Franklin county's mineral wealth was represented by barites and zinc blende, zinc ore and galena. This county was also one of the most generous financial supporters of the movement. Plastic and fire clays, lignite and brown coal were contributed by Fulton county. Garrard county furnished the unique distinction of having as a citizen the man who made the first contribution to the Kentucky exhibit fund. This was Mr. Joseph R. Mount, of Lancaster, who contributed to the fund immediately when the subject of Kentucky's participation in the Exposition was first mentioned. The county had sphalerite, barites, fluorspar and limestone exhibits in the mineral display.

Pryorsburg and vicinity, in Graves county, produce many clays and the potteries of that little city displayed some excellent manufactured products. Coal and lignite were also among the county's exhibits. There were also asphalt, iron ore and coal from Grayson county. This

section of the State likewise sent samples of marls and limestone in its rough and polished state. There was limestone from Green county's quarries. Iron ores and cannel coal, together with exhibits of fire clay, came from Greenup county.

In connection with the State's forestry exhibit, a factory in Hawesville sent samples of its vehicle hubs, thus giving Hancock county representation at the Fair. Asphalt and shale came from Hardin county, and oolitic limestone, iron ore and bituminous and semi-cannel coal were sent from Harlan county. Barites and galena represent some of the wealth of Harrison county. Crude clays and manufactured products in the shape of cups, vases and pitchers came from Hart county soil and potteries. The same county also had some samples of its iron ore and kaolin.

Henderson's factories and mills were represented. There was an exhibit of shipping crates and baskets and also one of flour from the hustling city on the Ohio river. Henry county had some barites and galena, as well as some samples of its white burley tobacco. Tile and plastic clays are found in abundance in Hickman county and samples of these, together with an exhibit of sand from that county, were on display.

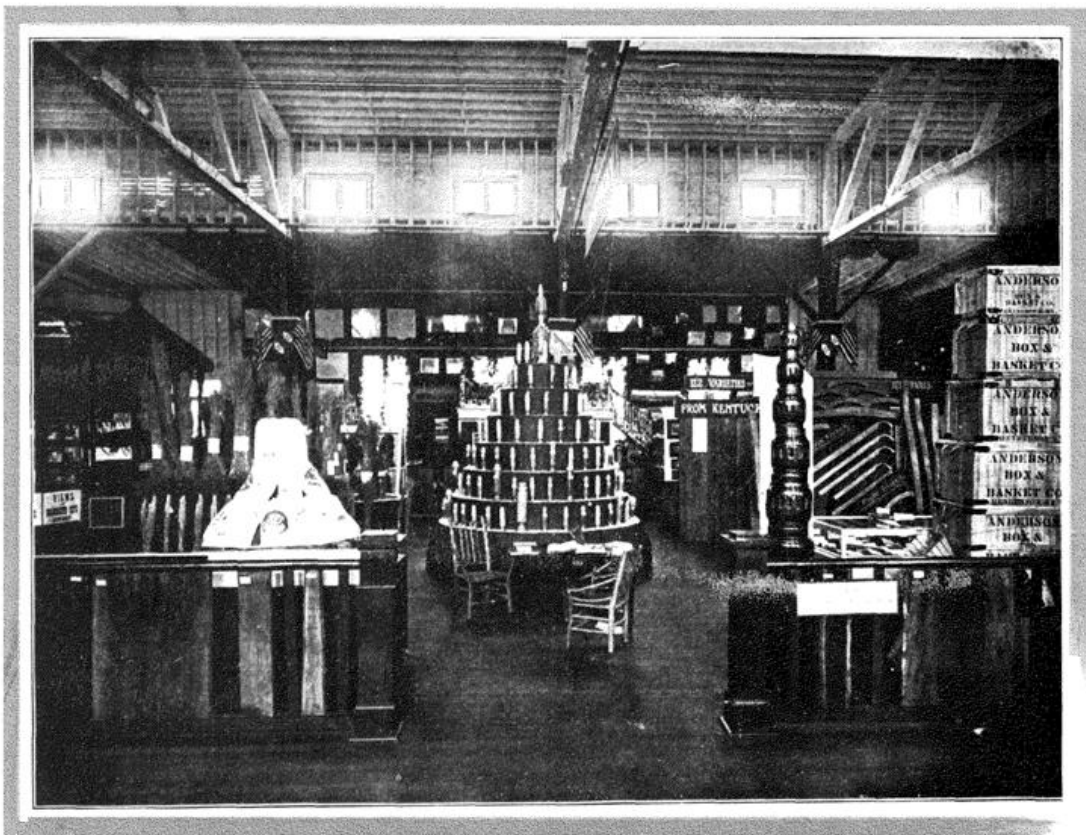
From Hopkins county came a most interesting collection. Clover seed, oats, wheat and

grasses were found. There were timothy stalks almost six feet tall and some well-headed sheaves of bluegrass from this western county. It was also this county which presented such an excellent forestry exhibit at the Exposition, as already explained. In the Mineral Building there were several samples of coal from the mining district of Hopkins county.

Jefferson county citizens were liberal in their support of the movement. The Fiscal Court of the most populous county in the State, as already recorded, subscribed \$5,000 to the fund which was used to advertise the county and State. Three or four Louisville manufacturing firms were represented with creditable exhibits in the Palace of Liberal Arts. Another Louisville factory had an exhibit in the Transportation Building, while two other Falls City concerns were represented in the Food Products Building.

Jefferson county was well represented in the Kentucky agricultural and forestry exhibit. It has been seen that the great pyramid which formed the centerpiece for the Kentucky exhibit was filled with field and garden seeds, collected largely from Jefferson county. Limestone was the only article exhibited by Jefferson county in the Mineral Building.

Jessamine county had zinc blende, barites and some fluorspar. Iron ore, coal and sandstone came from Johnson county, this region also furnishing some of the logs used in the con-



Center Pyramid of Seeds and Grain—Agricultural Exhibit



This page in the original text is blank.



struction of the Kentucky Home. Larue county had samples of kaolin, and Laurel county produced sands and bituminous coal. Iron ore, bituminous coal and cannel coal were displayed by Lawrence county. Excellent exhibits of coal were made by Lee county. It also had some samples of iron ore. Leslie and Letcher counties sent samples of their coal.

From Lewis county was sent zinc blende and dressed sandstone. Lincoln county was represented by hemp exhibits and also samples of its barites. Livingston county's varied mineral wealth was generously displayed. There was iron ore, fire clay, marl, fluorite crystals, interwoven with barites, fluorspar, sphalerite and fluorite. Asphalt, limestone blocks, polished limestone, fire clay and manganese-iron ore were sent from Logan county, while some samples of iron ore also came from Lyon county.

Madison was one of those counties which raised more than the sum asked from it by the Kentucky Commission. It was in this county that Fort Boonesboro was erected more than one hundred years ago. It has been related above that some of the logs used in the construction of the Kentucky Home came from almost the identical spot on which the original fort stood. In the mineral exhibit, Madison county was represented by terra cotta, plastic and fire clay. Manufactured products from these clays were shown, and some asphalt rock was

also to be seen. Marion county had several samples of its limestone, and Marshall county sent plastic and fire clays.

Mason county early contributed more than the sum asked from it by the State Commission. Some of the first white burley tobacco installed in the Kentucky exhibit came from the farms of this county. Wooden pulleys were on display from one of the factories of Maysville. It is declared that the only lithograph stone outside of Germany comes from Meade county. An excellent sample of this stone was on display in the Mineral Building. The county also had limestone and oolitic limestone, used in the manufacture of Portland cement. Menefee had samples of its iron ore and clays. Calcite, fluorite, barite and fluorspar crystals were displayed by Mercer county. There was an excellent exhibit of tobacco from the farms of McCracken, while iron ore, plastic, fire and refractory clays were brought from that county. McLean county furnished some of the logs for the Kentucky Building, and had on display crude petroleum and its products, and samples of coal. Coal and petroleum came from Morgan county, and coal, sandstone, iron ore and fire clay were exhibited by Muhlenberg county. There were samples of asphalt rock and limestone from Nelson county, and coal, iron ore and sands from Ohio county. Niagara limestone was displayed from Oldham county. Owen

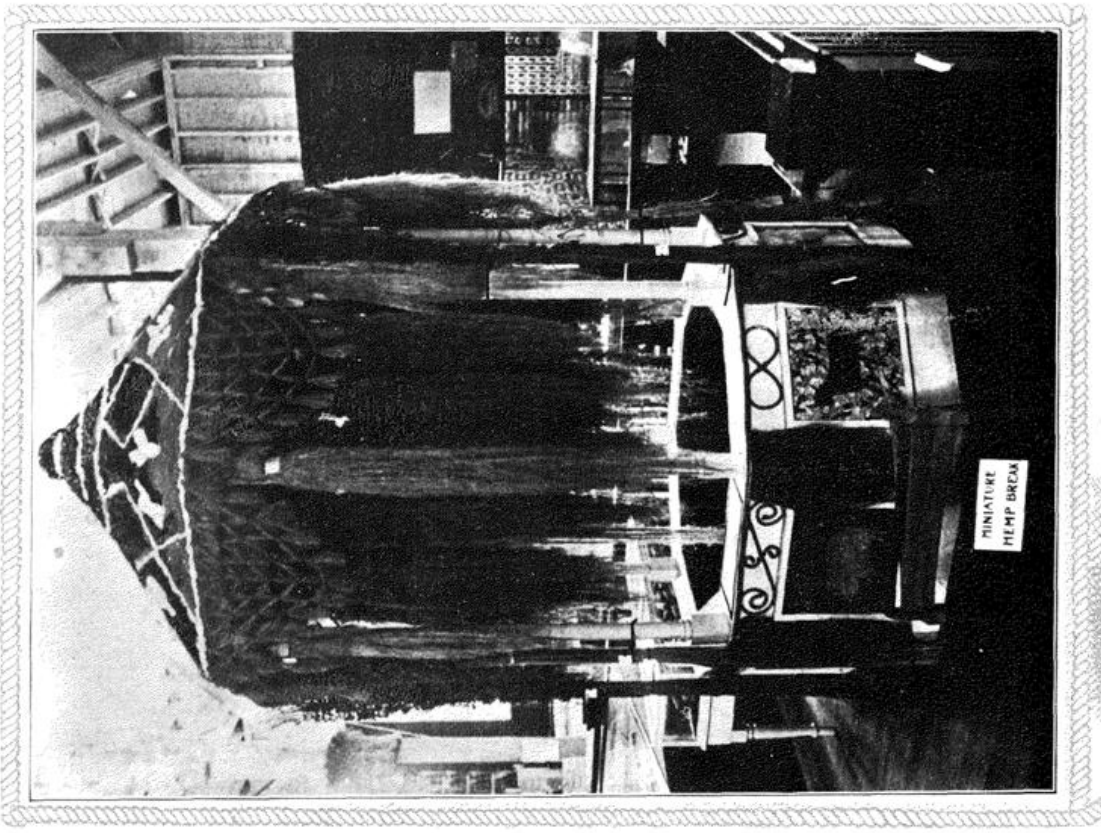
county assisted in the big tobacco display with which Kentucky outranked all competitors. There were several samples of zinc sulphide, barites, calcite and limestone from this county. Owsley county had some samples of her coal, as also had Perry county. The latter county sent blocks of cannel, splint and bituminous coal. Pike county, too, contributed coal.

A carload of the logs used in the construction of Fort Boonesboro came from Powell county. Plastic and fire clays and rich samples of Portland cement made from clays of Powell county were on display. Pulaski county sent coal and fire clay. Rockcastle county furnished logs for the fort, and was also represented among the exhibits with iron ores, fire clays and dressed sandstone and limestone. Sandstone was sent from Rowan county, and barites, zinc blende, limestone and a number of other products of the earth came from Scott county. Simpson county furnished sandstone and limestone and Taylor county had kaolinitic. Fluorspar and iron ore were displayed from Trigg county. Limestone was exhibited by Trimble county, and coal by Union county.

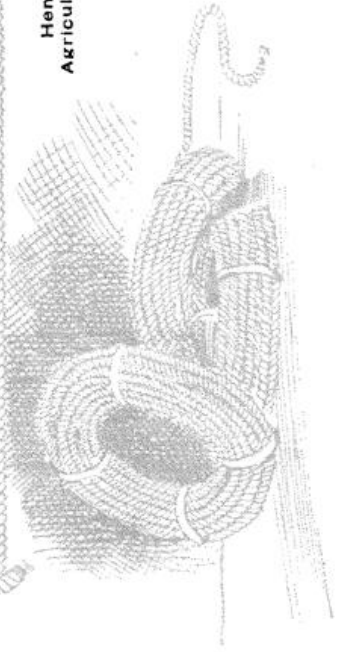
A number of Warren county citizens contributed logs for the State Building. The mineral display from Kentucky also had several excellent exhibits of oolitic limestone which came from this county. Washington county furnished limestone, and Wayne county had samples

of coal, iron ore and petroleum. There was coal from Webster county, and also from Whitley county. The latter region had crude petroleum and its products, iron ore, shale, fire clay and sandstone among its exhibits. Iron ore, coal, petroleum and fire clay came from Wolfe county. Some of the logs used in the fort were also furnished by this county. Excellent samples of corn raised in Woodford county were on display, and the same county sent calcite, sphalerite, zinc blende, barites and galena to the Exposition.





Hemp Booth  
Agricultural Exhibit



This page in the original text is blank.



THE exploitation of the State's advantages was not confined alone to displaying samples of her products and resources, and to the distribution of her hospitality. It should not be forgotten that the newspapers at home and abroad were at all times most generous in their assistance. The newspapers, as indicated earlier in this volume, were liberal and enthusiastic in their support of the movement when funds were being raised. They were equally earnest in their assistance when it came to describing what had been accomplished. The newspapers of Norfolk and other Virginia cities, as well as some of the larger dailies of the Eastern section, not infrequently called attention to the striking part Kentucky was taking in the Ter-Centennial. Several cities and counties at the request of the Commission furnished literature advertising their respective communities. This was judiciously distributed at the Kentucky Building, and also from the office in the State's exhibit. From beginning to end of the World's Fair every advantage was taken of the opportunity to thoroughly and appropriately advertise the Commonwealth.

A feature of the exploitation work done under the immediate auspices of the Commission was the distribution of a series of postcards during the last month of the Ter-Centennial which showed in pictures Fort Boonesboro and the Kentucky exhibits.

Immediately following the close of the Exposition, disposition was made of the Kentucky Building and furniture, and the packing of exhibits for shipment home was begun. Fort Boonesboro was sold to the Norfolk & Hampton Roads Company, owner of the land occupied by the building. Kentucky was the first State with so considerable a display to completely wind up its affairs at the Exposition. Within three days the packing of exhibits was completed and within less than a week thereafter, the exhibits were loaded in cars and on the way home. A few weeks prior to the close of the Exposition, a contribution was made by the Commission to the Naval Young Men's Christian Association. This was in the shape of six pieces of old hickory furniture, which will be used as a nucleus for furnishing a "Kentucky Corner" in the handsome Association home now being erected in Norfolk. This building will be for the use of sailors on shore leave.

The remaining furniture was sold to the purchaser of the State Building, excepting a few minor articles, which were here and there disposed of to other purchasers. A contribution was made by the Commission to the State Geological Survey of the thirteen Flemish oak show cases which held a portion of the mineral display. To the same institution was turned over some ten dozen glass display jars used on the seed pyramid in the agricultural exhibit.



The registers used at the Kentucky Building were sent to the State Historical Society at Frankfort, and will find a permanent home in the new State Capitol when the Society transfers its headquarters to that handsome structure.



### Subscriptions by Counties.

Adair . . . . . \$ 18.00	Garrard . . . . . 101.00	Monroe . . . . . 8.00
Ballard . . . . . 165.43	Grayson . . . . . 7.50	Montgomery . . . . . 294.85
Barren . . . . . 5.00	Greenup . . . . . 12.50	Muhlenburg . . . . . 1,487.50
Bath . . . . . 20.00	Hardin . . . . . 128.72	Nicholas . . . . . 209.50
Bell . . . . . 189.70	Harrison . . . . . 100.00	Oldham . . . . . 7.00
Boyd . . . . . 25.00	Hart . . . . . 66.88	Owen . . . . . 4.25
Boyle . . . . . 45.00	Henderson . . . . . 372.00	Pike . . . . . 250.00
Bracken . . . . . 9.50	Henry . . . . . 121.00	Powell . . . . . 25.00
Breckinridge . . . . . 6.50	Hopkins . . . . . 1,823.50	Pulaski . . . . . 50.00
Bullitt . . . . . 32.25	Jessamine . . . . . 183.03	Robertson . . . . . 6.00
Campbell . . . . . 262.50	Jefferson . . . . . 9,183.20	Scott . . . . . 161.00
Carlisle . . . . . 112.63	Johnson . . . . . 250.00	Shelby . . . . . 250.00
Carroll . . . . . 7.50	Kenton . . . . . 766.50	Simpson . . . . . 27.00
Carter . . . . . 7.50	Knott . . . . . 67.00	Taylor . . . . . 75.90
Christian . . . . . 577.75	Lee . . . . . 72.00	Trigg . . . . . 14.25
Clark . . . . . 622.25	Lincoln . . . . . 283.00	Trimble . . . . . 11.00
Crittenden . . . . . 32.50	Livingston . . . . . 2.25	Union . . . . . 7.50
Daviess . . . . . 156.00	Logan . . . . . 20.00	Warren . . . . . 140.00
Edmonson . . . . . 155.00	Madison . . . . . 541.00	Webster . . . . . 62.50
Fayette . . . . . 720.05	Mason . . . . . 588.26	Whitley . . . . . 211.50
Fleming . . . . . 41.25	McCracken . . . . . 130.00	Woodford . . . . . 85.00
Floyd . . . . . 95.06	McLean . . . . . 130.00	
Franklin . . . . . 1,497.02	Mercer . . . . . 262.00	\$23,451.43
Gallatin . . . . . 38.95	Metcalfe . . . . . 10.90	
Total subscriptions from Counties . . . . . \$23,451.43		
Total receipts from Schools . . . . . 778.85		
Total receipts from Other Sources . . . . . 884.03		
Grand total . . . . . \$25,114.31		



Tobacco and Grasses—Agricultural Exhibit

This page in the original text is blank.

### Subscriptions by Public School Pupils of Kentucky.

Louisville Public Schools .....	\$107.06	Fleming County Public Schools .....	.43
Spencerian Commercial School (Louisville) . . . . .	8.08	Jefferson County Public Schools (Brown's School, Louisville) .....	.28
Louisville Training School for Boys ....	2.06	Lee County Public Schools .....	.33
Lawrenceburg Public Schools .....	3.80	Nelson County Public Schools .....	18.72
Greenville Graded Schools .....	7.06	Owensboro City Schools .....	34.86
Orphanage of Good Shepherd (Louisville)	1.00	Breckinridge County Public Schools ...	24.65
University-Flexner School (Louisville) .	2.80	Leslie County Schools (Hyden Academy)	2.66
Louisville Public Schools (2d subscrip- tion) . . . . .	16.66	Webster County Public Schools .....	15.65
Breckinridge County Schools (Lodiburg)	.25	Louisville Public Schools (3d subscrip- tion) . . . . .	5.13
Spencer County Public Schools (Little Mount) . . . . .	.50	Greenup County Public Schools (Siloam School) . . . . .	.62
Owsley County Public Schools .....	1.00	Warren County Public Schools .....	16.56
Earlington Public Schools .....	23.15	Crab Orchard Graded Schools .....	3.01
St. Charles Schools .....	6.55	Graves County Public Schools .....	2.50
Bowling Green Public Schools .....	20.28	Lawrence County Public Schools .....	1.56
Frankfort Public Schools .....	19.44	Boyd County Public Schools .....	.94
Harrison County Public Schools .....	5.75	Graves County Public Schools (Lynn- ville) . . . . .	.40

Warren County Schools (Smith's Grove)	.26	Henderson County Public Schools (2d	
Breckinridge County Schools (McQuady)	.40	subscription)	.35
Oldham County Public Schools (Beards)	.15	Johnson County Public Schools	9.55
Henderson County Public Schools	10.72	Trigg County Public Schools	.25
Bourbon County Public Schools	11.30	Ballard County Public Schools	10.00
Clark County Public Schools	5.70	Ohio County Public Schools	11.46
Lawrence County Public Schools	4.67	Montgomery County Public Schools	12.69
Spencer County Public Schools	.50	Greenup County Public Schools	8.23
Breckinridge County Public Schools (Garfield School)	.26	Owen County Public Schools	11.07
Franklin County Public Schools	11.59	Spencer County Public Schools	1.50
Graves County Public Schools (2d subscription)	.50	Breckinridge County Public Schools	2.24
MeLean County Public Schools	20.00	Madison County Public Schools	12.86
Warren County Schools (Ogden College, Bowling Green)	3.09	Lebanon Public Schools	6.38
Christian County Public Schools	7.34	Garrard County Public Schools	1.75
Louisville Public Schools (4th subscription)	3.47	Breckinridge County Public Schools, (Raymond)	.30
Wayne County Public Schools	.75	Shelby County Public Schools (Shelbyville)	5.25
		Lee County Public Schools	5.85
		Jefferson County Public Schools	36.64
		Grant County Public Schools	2.97

Webster County Public Schools (2d sub- scription) . . . . .	3.09
Graves County Public Schools (3d sub- scription) . . . . .	1.83
Whitley County Public Schools . . . . .	4.80
Logan County Public Schools . . . . .	1.50
Warren County Public Schools . . . . .	1.00
Madisonville Graded Schools . . . . .	2.50
Lyon County Public Schools . . . . .	.75
Trigg County Public Schools . . . . .	10.87
Boone County Public Schools . . . . .	7.00
Ohio County Public Schools . . . . .	.22
Owensboro Public Schools . . . . .	5.22
Winchester Public Schools . . . . .	19.77
Scott County Public Schools . . . . .	8.21
Metcalfe County Public Schools . . . . .	.30
Wayne County Public Schools . . . . .	.75
Hart County Public Schools . . . . .	2.00
Logan County Public Schools . . . . .	1.00
Boone County Public Schools (2d sub- scription) . . . . .	.68

Morehead Public Schools . . . . .	2.11
Bell County Public Schools . . . . .	3.58
Owsley County Public Schools (Turin) . . . . .	.26
Fulton County Public Schools . . . . .	.50
Fleming County Public Schools (2d sub- scription) . . . . .	.76
Bath County Public Schools . . . . .	.53
Runkel High School, Lebanon . . . . .	3.00
Estill County Public Schools . . . . .	1.25
St. Augustine's Parochial School (Leba- non) . . . . .	4.70
Kenton County Public Schools . . . . .	16.64
Barren County Public Schools . . . . .	16.83
Allen County Public Schools (Dist. No. 7) . . . . .	1.00
Meade County Public Schools (Dists. Nos. 34 and 50) . . . . .	1.30
Bourbon County Public Schools (2d subscription) . . . . .	2.77
Gallatin County Public Schools . . . . .	10.84
Lexington High School . . . . .	3.50

Shelby County Public Schools (District No. 36) . . . . .	1.25	Bath County Public Schools (Dist. B) . . . . .	1.00
Hopkins County Public Schools (Hecla School) . . . . .	3.50	Bourbon County Public Schools (Clay's Cross Roads) . . . . .	.35
Jefferson County Public Schools (2d subscription) . . . . .	4.01	Jefferson County Public Schools (Colored) . . . . .	1.00
Garrard County Public Schools . . . . .	.60	Lexington City Schools . . . . .	20.02
Warren County Public Schools (District N) . . . . .	.45	Robertson County Public Schools (Mt. Olivet District) . . . . .	.50
Centre College Debating Society (Danville) . . . . .	10.00	Hardin County Public Schools . . . . .	10.99
Madison County Public Schools (2d subscription) . . . . .	1.29	Washington County Public Schools . . . . .	2.96
		Christian County Public Schools . . . . .	1.09
		Carroll County Public Schools . . . . .	5.00
		<b>Total . . . . .</b>	<b>\$778.85</b>





## Financial Statement.

RECEIPTS.	EXPENDITURES.
<p style="text-align: center;">ACCOUNT:</p> <p>Finance . . . . . \$23,451.43</p> <p>Exploitation . . . . . 80.00</p> <p>Office Expense . . . . .</p> <p>Building . . . . . 546.59</p> <p>Minerals . . . . . 14.50</p> <p>“Jamestown and Boonesboro” Day . . . . . 778.85</p> <p>Commissioners . . . . .</p> <p>Manufactures . . . . .</p> <p>Agriculture . . . . . 10.25</p> <p>Entertainment . . . . .</p> <p>Forestry . . . . .</p> <p>Maintenance . . . . . 232.69</p> <p style="text-align: right; border-top: 1px solid black;">Total Receipts . . . . . \$25,114.31</p>	<p style="text-align: center;">ACCOUNT:</p> <p>Finance . . . . . \$ 727.69</p> <p>Exploitation . . . . . 1,628.06</p> <p>Office Expense . . . . . 3,128.60</p> <p>Building . . . . . 8,637.70</p> <p>Minerals . . . . . 1,311.51</p> <p>“Jamestown and Boonesboro” Day . . . . . 189.40</p> <p>Commissioners . . . . . 28.04</p> <p>Manufactures . . . . . 21.15</p> <p>Agriculture . . . . . 1,117.60</p> <p>Entertainment . . . . . 918.35</p> <p>Forestry . . . . . 1,005.28</p> <p>Maintenance . . . . . 4,056.60</p> <p>Surplus for Refund . . . . . 2,344.33</p> <p style="text-align: right; border-top: 1px solid black;">Total Expenditures . . . . . \$25,114 31</p>