

Bulletin of the

UNIVERSITY OF KENTUCKY



SUMMER QUARTER
1947

First Term: June 16 to July 24

Second Term: July 25 to August 30

Published monthly, January to September inclusive, by the University of Kentucky, Lexington. Entered as Second-Class Matter at the Post Office, Lexington, Ky., under the Act of July 16, 1894.

Acceptance for mailing at special rate of postage provided for in Section 1103, Act of October 3, 1917, authorized June 30, 1920.

Vol. 39

APRIL

No. 4

BOARD OF TRUSTEES

1947

Ex Officio Members

Simeon S. Willis, Governor
John Fred Williams, Superintendent of Public Instruction
Elliott Robertson, Commissioner of Agriculture

From the State Board of Agriculture

J. N. Smith, Eddyville, 1952
Eldred E. Adams, Louisa, 1950
Robert Tway, Louisville, 1948

Members at Large

E. C. O'Rear, Frankfort, 1952
Harper Gatton, Madisonville, 1952
Mrs. Paul G. Blazer, Ashland, 1950
John C. Everett, Maysville, 1950
Richard C. Stoll, Lexington, 1948
R. P. Hobson, Louisville, 1948

Alumni Members

T. H. Cutler, Frankfort, 1952
Grover Creech, Louisville, 1950
H. D. Palmore, Frankfort, 1948

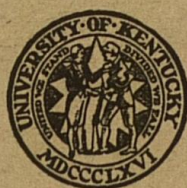
Officers of the Board

Simeon S. Willis, Chairman
Richard C. Stoll, Vice Chairman
Frank D. Peterson, Secretary and Treasurer

Executive Committee

Richard C. Stoll, Chairman
T. H. Cutler
John C. Everett
R. P. Hobson
H. D. Palmore

BULLETIN
OF THE
University of Kentucky



SUMMER QUARTER, 1947

First Term: June 16 to July 24

Second Term: July 25 to August 30

UNIVERSITY SCHOOL

Elementary—June 9 to July 24

High School—June 9 to July 24

CONTENTS

	Pages
Calendar	3
Administrative Officers	4
Part I. General Information	5
The Summer Quarter for 1947.....	7
Accredited Relations	8
The Environment of the University.....	8
Placement Service	9
The University School and Student Teaching.....	10
Length of Quarter	11
Admission	11
Numbering of Courses	14
Student Load	14
Fees	14
Refunds	14
Late Registration	15
Marking System	15
Room and Board	15
University Health Service	16
Requirements for Graduation	16
College of Arts and Sciences	17
College of Agriculture and Home Economics.....	21
College of Engineering	22
College of Law	23
College of Education	23
College of Commerce	25
Graduate School	25
Part II. Schedule of Classes	29

SUMMER QUARTER CALENDAR 1947

- | | |
|-------------|--|
| June 16, 17 | Monday and Tuesday—Registration for First Term. |
| June 18 | Wednesday—Class work begins. |
| June 21 | Saturday—Last date on which one may enter an organized class. |
| June 27 | Friday—Last date on which one may drop a course without a grade. |
| June 27 | Friday—Period for filing applications for degrees. |
| July 4, 5 | Friday and Saturday—Independence Day Holiday. |
| July 24 | Thursday, 6 p. m.—First Term ends. |
| July 25, 26 | Friday and Saturday—Registration for Second Term. |
| July 28 | Monday—Class work begins. |
| July 31 | Thursday—Last date on which one may enter an organized class. |
| July 31 | Thursday—Last date for filing applications for degrees. |
| August 7 | Thursday—Last date on which one may drop a course without a grade. |
| August 29 | Friday—Summer School Commencement. |
| August 30 | Saturday, 6 p. m.—Quarter ends. |

ADMINISTRATIVE OFFICERS

GENERAL

HERMAN LEE DONOVAN, M.A., Ph.D., LL.D., President

LEO M. CHAMBERLAIN, M.A., Ph.D., Vice President

MAURICE F. SEAY, M.A., Ph.D., LL.D., Dean of the University and Registrar

ALBERT DENNIS KIRWAN, M.A., Ph.D., Dean of Men

SARAH BENNETT HOLMES, M.A., Dean of Women

FRANK D. PETERSON, A.B., University Comptroller

MARGARET ISADORA KING, A.B., B.S., Librarian

LOUIS CLIFTON, M.A., Director of University Extension

THE COLLEGES

MARTIN MARSHALL WHITE, M.A., Ph.D., Dean of the College of Arts and Sciences

THOMAS POE COOPER, B.S., D.Sc., LL.D., Dean of the College of Agriculture and Home Economics and Director of the Experiment Station

DANIEL VOIERS TERRELL, C.E., Dean of the College of Engineering

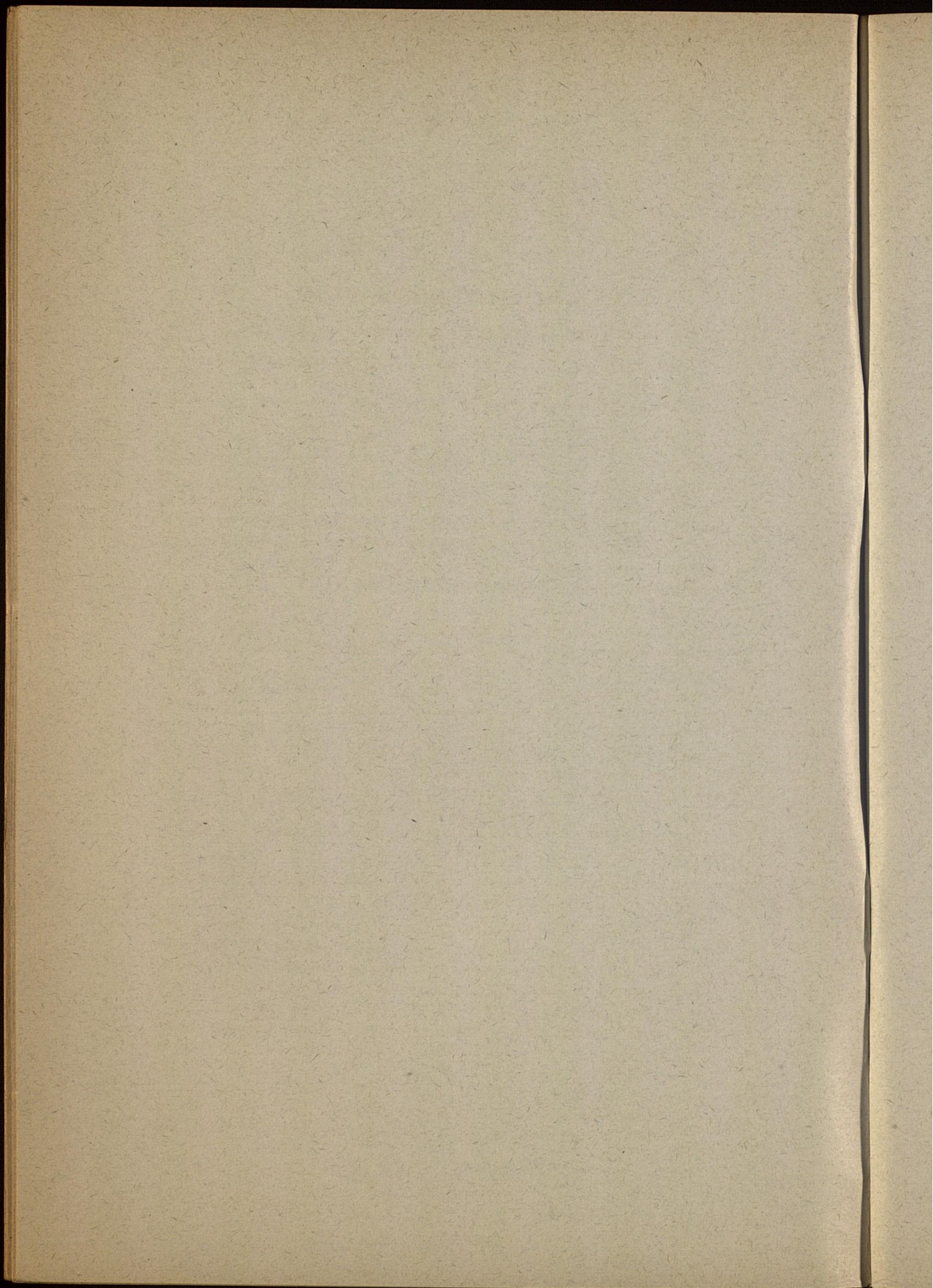
ALVIN E. EVANS, M.A., Ph.D., J.D., Dean of the College of Law

WILLIAM SEPTIMUS TAYLOR, M.S., Ph.D., LL.D., Dean of the College of Education

EDWARD WIEST, M.A., Ph.D., Dean of the College of Commerce

WILLIAM DELBERT FUNKHOUSER, M.A., Ph.D., D.Sc., Dean of the Graduate School

Part I
GENERAL INFORMATION



GENERAL INFORMATION

THE SUMMER QUARTER FOR 1947

The enrollment at the University has increased rapidly since the close of the war, with the number of registrations in the fall quarter of 1946 exceeding the highest pre-war figure by about 74 per cent. Currently, veteran students make up about 64 per cent of the total enrollment. There are ample reasons for predicting that the summer school enrollment for 1947 will be in excess of any previous year. Among the important factors supporting this view, is the inclination of the veteran student to remain in school throughout the four quarters. It appears quite probable that the Summer Quarter enrollment will include a minimum of 3,000 veterans beginning or continuing their education under the benefits provided by Public laws 16 and 346.

While the University is making every effort to care for all students who can qualify for admission, it must be emphasized that the housing problem is extremely difficult of solution. All prospective students are urged, therefore, to secure official approval of their admission at the earliest date possible, and at the same time to make necessary arrangements about living quarters.

The course offering during the 1947 Summer Quarter will be almost as extensive and varied as during the regular school year. As indicated in a later section of this bulletin, courses will be offered for graduates and undergraduates in the College of Arts and Sciences, the College of Agriculture and Home Economics, the College of Engineering, the College of Law, the College of Education, and the College of Commerce.

In particular, the needs of the following groups have been kept in mind in planning the Summer Quarter program for 1947.

1. The high school boy or girl who graduates this spring and wishes to begin college work without delay. If Selective Service is resumed, the boy who graduates before reaching his eighteenth birthday will find it especially advantageous to start his college work during the summer.
2. The veteran who is eligible for educational benefits under Public Law 16 or 346. It will be desirable for the veteran recently discharged to begin his college studies at the earliest date possible. Those already enrolled will find it desirable to continue in school through the summer, in order that graduation may be achieved with the least loss of time.

3. Teachers, principals, supervisors, and superintendents who wish to further their preparation for educational work. The in-service training of teachers has lagged greatly during the war, and it is expected that hundreds of teachers and other school officials will now wish to continue their summer studies.
4. All students, women and men, who are in college and wish to accelerate their programs of study.
5. Other persons who need certain courses to advance in their specific vocations, and to meet the requirements of the post-war economy.

Over and above its program of liberal education, the University Summer Quarter provides numerous opportunities for persons to prepare for specific occupations. The extent of the opportunities is indicated by the following vocational areas in which summer courses will be offered: Industrial Chemistry, Journalism, Medical Technology, Pre-Medicine, Pre-Dentistry, Pre-Nursing, Music, Library Science, Public Service, Art, Bacteriology, Geography, Geology, Psychology, Social Work, Sociology, Agriculture in its various phases, Pre-Forestry, Pre-Veterinary, Home Economics, Architectural Engineering, Aeronautical Engineering, Civil Engineering, Communications Engineering, Electrical Engineering, Mechanical Engineering, Metallurgical Engineering, Mining Engineering, Sanitary Engineering, Law, Elementary Teaching, High School Teaching, Educational Supervision and Administration, General Business, Commerce-Law, Industrial Administration, and Secretarial Work.

ACCREDITED RELATIONS

The University of Kentucky is on the approved list of the Association of American Universities, and is a member of the Southern Association of Colleges and Secondary Schools and the Kentucky Association of Colleges and Secondary Schools. It is accredited in its respective colleges or departments by the Association of American Law Schools, the American Association of Collegiate Schools of Business, the American Association of Schools and Departments of Journalism, the American Library Association, the National Association of Schools of Music, and the Engineer's Council for Professional Development, the American Chemical Society, and the National Association of Schools of Social Administration.

THE ENVIRONMENT OF THE UNIVERSITY

The University of Kentucky is located in Lexington in the center of the Bluegrass, a delightful country of scenic beauty and of great historical interest.

Many of the famous horse farms, some individual establishments containing more than a thousand acres, are open to visitors

throughout the year. These farms, with their broad pastures, sparkling streams, woodlands, and paved roads provide Fayette County with a system of parks which is unique. Idle Hour, cradle of four Derby winners; Elmendorf; Walnut Hall; Calumet, home of Whirlaway; Castleton; Hamburg Place; Dixiana; Coldstream; and Faraway, home of Man o' War, are among the beautiful horse farms in Fayette County open to visitors.

Points of particular interest in Lexington, other than the nearby farms, are Ashland, the home of Henry Clay; General John Hunt Morgan's home; the home of Mary Todd, wife of Lincoln; the vast tobacco warehouses; the Keeneland Race Track; the track of the Kentucky Trotting Horse Breeder's Association; the United States Veterans' Hospital; and the U. S. Public Health Service Hospital.

Within a relatively short distance from Lexington are Frankfort, the Capital City, with its many historical features; Herrington Lake; Shakertown; Fort Harrod and its adjacent Pioneer Cemetery; the Old Kentucky Home; the Palisades of the Kentucky River; and many other points of historical and scenic interest.

STUDENT UNION BUILDING

The Union Building is the center of student activity on the campus. Various rooms are available for the enjoyment of students during leisure hours. One may meet friends or read leading magazines and newspapers in the Great Hall; engage in pool, billiards, or pingpong in the Game Room; play cards, checkers, or chess in the Social Room; and hear the works of great composers in the Music Room.

For the convenience of students, the building maintains an information desk, telegraph and telephone service, a modern barber shop, a newly decorated cafeteria serving foods of quality, an attractive soda grill, conference rooms and comfortable lounges.

The Student Union Board is eager for all University students to take advantage of the services and facilities of the building.

PLACEMENT SERVICE

There is a constantly growing demand for the services of the graduates of the University of Kentucky. Placement services are maintained by several colleges on the campus and every attempt is made to procure for the students and for the graduates of the University the type of employment which will enable each one to achieve the best results.

In the College of Commerce is the Senior-Commerce Employment Association which is self-supporting and is headed by a permanent secretary. The Association has been very successful in placing graduates with nationally operating industrial concerns,

credit investigating and reporting companies, wholesale houses, banks, insurance companies, chain store companies, governmental agencies both federal and state, and in teaching positions. These positions included secretarial work, accounting, advertising, selling, personnel, and statistical work.

The Teacher Placement Bureau of the College of Education is designed particularly to assist in the placement of superintendents, principals, and teachers. Each student in attendance at the University who desires a teaching position should register with the Placement Bureau, Room 115, Education Building. Superintendents and college administrators who desire capable teachers should write directly to the bureau for recommendations and credentials.

The College of Engineering has an enviable reputation for training its men well for successful careers in the engineering and industrial world. The demand for their services has been such that, with a few exceptions, all members of each class have been employed soon after graduation. The placement of engineering graduates is directed by the Dean of the College with the assistance of the heads of departments.

RECREATIONAL ACTIVITIES

The summer months are vacation and recreation time. Provision is made for Summer Quarter students to participate in numerous recreational activities and to learn the fundamental skills and techniques involved. The Physical Education Department is offering recreational courses for men and women students in archery, badminton, tennis, social dancing, volley ball, bowling, and intramural sports. This is an opportunity for every summer quarter student to receive expert instruction in any or all of the above mentioned activities. If you are a novice it is your chance to learn; if an expert performer, it is your chance to participate under wholesome and enjoyable circumstances.

The primary purpose of the recreational courses is to provide pleasant and profitable leisure time activity for all students and to improve their performance ability. Teachers and supervisors of physical education will find the courses valuable in organizing teaching material and methods. Recreational leaders and directors will get new ideas on promoting leisure time activities. All Summer Quarter students will find the activities healthful and enjoyable.

THE UNIVERSITY SCHOOL AND STUDENT TEACHING

The University School will be in session during the first half of the summer quarter only. The term will begin Monday, June 9, and will run to Thursday, July 24. The University School will be open from 8:00 to 12:00 six days a week, but classes in the Elementary School will meet only five days a week.

Students desiring to register for student teaching in the University School should make application, on or before June 4, to Lyman Ginger, Director of the University School. Students are urged to file their applications for this course as early as possible, as time should be allowed the Dean's office to check the prerequisites before registration.

Summer school students with children have an opportunity to place them in the University School. Both the Elementary School and the High School maintain modern programs of education that should be of interest to parents attending the University of Kentucky summer quarter. Persons desiring to avail themselves of the opportunities of the University School should write the Director requesting reservations for their children.

The University School will provide instruction in all subjects regularly offered in the schools of Kentucky. High school pupils may earn one unit of credit toward their graduation requirements. This unit of work may be done in one subject or in two different subjects.

Pupils from any school in the state will be permitted to enroll in the University School for the summer term. The tuition charge for high school pupils will be \$10 for one-half unit or \$15 for one full unit in the ninth, tenth, eleventh, and twelfth grades. The tuition charge for seventh and eighth grade pupils will be \$7.50. No tuition is charged in the Elementary School for the summer quarter.

LENGTH OF QUARTER

The Summer Quarter of the University of Kentucky for 1947 will be eleven weeks in length, six days a week, and will be divided into two terms, the first to begin June 16 and to close July 24, the second to begin July 25 and to close August 30.

Classes during the Summer Quarter will begin at 7:00 a. m. The first hour will be from 7:00 to 8:15, the second hour from 8:25 to 9:40, the third hour from 9:50 to 11:05, and the fourth hour from 11:15 to 12:30. However, many courses will meet for one-hour periods.

ADMISSION

Students will be admitted to the University as their previous training warrants. They will be admitted to the freshman class, to advanced standing, as special students, as graduate students, or as auditors.

Applicants for admission should write the Registrar's Office for forms on which to submit their applications, stating at the time whether they wish forms for admission to the freshman class, to advanced standing, or to the Graduate School. Applications and tran-

scripts of credit should be filed in advance. Students entering with advanced standing and those entering the Graduate School should present transcripts from each institution they have attended.

To the Freshman Class. Applicants who are graduates of accredited high schools will be admitted to the University on certificate, provided they have at least fifteen units of acceptable high school work. A unit represents the study of any subject for a school year of at least thirty-two weeks, with five recitation periods a week, each of at least forty-five minutes in length, or the equivalent thereof. Double periods are required in shop, drawing, typewriting, and all other courses requiring no out-of-class preparation. One unit is the minimum credit accepted in any foreign language, and one-half unit the minimum in any other subject.

While the University does not prescribe a pattern of work for admission, it is strongly recommended that at least ten of the units presented be chosen from the English studies, the social studies, mathematics, the foreign languages, and the laboratory sciences, and that within these ten units the student offer at least three units in English, one and one-half in algebra, and one in plane geometry. Should a student lack these courses as prerequisites for any of his college work, he will be required to take them in college without credit, thus delaying his graduation.

Applicants who have graduated from unaccredited high schools and those not graduated from high school may be admitted as freshmen if, in addition to presenting the fifteen acceptable units, they successfully pass the University classification examinations.

Admission to the University does not necessarily qualify a student for admission to a particular college. In every case the student must meet the admission requirements of the college in which he is to enroll.

To Advanced Standing. A student who applies for admission with advanced standing is expected to present evidence that he is in good standing in every respect in the institution last attended, and in general is required to have maintained a standing of 1.0 in all previous college work. The University does not disregard at any time or under any conditions college or university records in order to admit applicants solely on the basis of their high school records.

As a Special Student. A graduate of another university or college may enter the University as a special student. Other persons may be admitted as special students provided they are fully prepared to do the work desired and provided they are at least twenty-one years of age.

As an Auditor. By payment of the required fees any person may be admitted to a class or classes as an auditor. A student regularly enrolled in any college must apply to the Dean of the college

in which he is registered in order to be an auditor. Other persons should apply to the Registrar's Office for admission. No credit can be given for a class audited, nor is the student permitted an examination for credit.

College of Arts and Sciences. Admission to this college is governed by the general admission requirements of the University outlined above.

College of Agriculture and Home Economics. Admission to this College is governed by the general admission requirements of the University outlined above.

College of Engineering. Admission to the freshman class of the College of Engineering is limited to students rated in the upper three-quarters on the University placement tests.

In addition to meeting the general requirements for admission to the University, the high school credits presented by the applicant shall include one unit in Plane Geometry, one-half unit in Solid Geometry, and one and one-half units in Algebra. If the student lacks only the half unit in Solid Geometry, he may be admitted, but this subject will be added to the requirements of the freshman year.

College of Law. An applicant for admission to the College of Law must offer 90 quarter hours (exclusive of physical education and military science) completed in residence in colleges other than Law, nine of which must be in English. A standing of 1.0 is the minimum qualitative requirement, but in other than exceptional cases an applicant will not be accepted unless he has maintained a standing of 1.3 on all previous work. While there is no prescribed pre-law curriculum, the applicant's record is evaluated in terms of its relationship to the study of law, and in terms of the requirements of the Association of American Law Schools.

College of Education. Admission to the freshman class of the College of Education is limited to students rated in the upper three-fourths on the University placement tests. In order to transfer to the College of Education from another institution or from another college of the University, a student must have a standing of 1.0 or higher. The freshman applicant must meet the general admission requirements of the University.

College of Commerce. Admission to the freshman class of the College of Commerce is limited to students rated in the upper three-fourths on the University placement tests. The freshman applicant must meet the general admission requirements of the University.

The Graduate School. A graduate of a fully accredited institution of higher learning may be admitted to the Graduate School upon evidence of graduation and an official transcript of under-

graduate courses. However, such admission does not obligate the University to accept all credit granted by the undergraduate school. When full credit is not granted, the student will be required to do more than the normal amount of work to complete a graduate degree. Applications from graduates of institutions not fully accredited will be individually evaluated. However, a student from such a school is encouraged to secure a bachelor's degree from a fully accredited institution before applying.

NUMBERING OF COURSES

Courses numbered 1 to 99, inclusive, may be taken for credit only by undergraduate students. Courses numbered 100 to 199, inclusive, may be taken for credit by juniors, seniors, and graduate students, provided that a course so numbered may carry graduate credit only with the approval of the student's graduate committee. Courses numbered 200 or above are open only to graduate students.

STUDENT LOAD

The normal load for the summer quarter is from 16 to 18 quarter hours, and for one term of the quarter, eight or nine hours.

FEES

For 1947 the fee for all resident students, except those enrolled in the Law School, will be \$37.50 for the full summer quarter, and \$24.25 for either term. For non-resident students the corresponding fees will be \$57.50 and \$29.25. For resident students enrolled in the College of Law, the fee for the full summer quarter will be \$40.50 and for either term \$26.25. The corresponding fees for non-resident students will be \$60.50 and \$31.25.

Part-time students will pay according to the number of quarter hours carried, except that the full-time fee will be paid in all cases when the student load for one term equals or exceeds six quarter hours.

Students attending for the full quarter must register at the beginning of each term, paying the term fee for the first term and the balance of the full-quarter fee for the second term.

REFUNDS

During the first week after the opening of either term of the Summer Quarter, students withdrawing from the University may receive a refund on the amount paid in fees, not to exceed 70 per cent of all fees paid. During the second week a refund of 50 per cent may be secured, and during the third week a refund of 30 per cent. In no case shall the amount refunded exceed 70 per cent and in no case will refunds be made after the first three weeks.

LATE REGISTRATION

No student will be allowed to register for credit for the first term after June 21, or for the second term after July 31.

Students entering the University after the regular registration periods will be charged an additional fee of \$3.00 for the first day, \$4.00 for the second day, and \$5.00 for any day thereafter. No exceptions to this charge will be granted.

MARKING SYSTEM

Results of work will be recorded in the Registrar's office as follows:

- A—Exceptionally high quality, valued at 3 points for each quarter hour.
- B—Good, valued at 2 points for each quarter hour.
- C—Fair, valued at 1 point for each quarter hour.
- D—Unsatisfactory, indicates a deficiency and gives no points, but gives credit for graduation if with such credit the student's standing is 1 or more.
- E—Failure, valued at no points and no credit.
- I—Incomplete.
- X—Absent from examination.
- WP—Withdrew passing.
- WF—Withdrew failing.

The standing of a student is defined as the ratio of his total number of points to his total number of credits. When a quarter's work is to be considered a standing is understood to be the ratio of the number of points gained to the number of credits scheduled.

ROOM AND BOARD

Application for a room in the Women's Residence Halls should be made to the Dean of Women, and for a room in the Men's Residence Halls to the Dean of Men. Each application should be accompanied by a reservation fee of ten dollars. If a check is sent in payment of this fee it should be made payable to the University of Kentucky. **Refunds of this fee will be made only in case notification of cancellation is given the Dean of Women or the Dean of Men at least thirty days before the term opens for which the reservation is made.** Upon occupancy of the room by a student, this fee will be held as a breakage deposit to be returned at the close of the quarter.

Women's Residence Halls. As the housing shortage has seriously limited the number of available rooms in Lexington, prospective students should make reservations for the Residence Halls or Sorority Houses as early as possible. The three large halls and as many of the smaller units as needed will remain open. Meals will be served in the central dining unit of the Residence Halls. The

cost of room and board is \$120 per quarter or \$60 per term.* Bed linens are furnished but students should bring blankets and towels. An application blank for reserving a room in the Residence Halls, should be secured from the office of the Dean of Women but a reservation will not be made until the completed application is returned accompanied by a \$10 deposit. Admission to the University by the Registrar's Office does not constitute a reservation in the Residence Halls. All room assignments are made in the order of receipt of the completed application. In order to hold a room beyond the regular registration dates, special arrangements for late arrival should be made with the Dean of Women.

Men's Residence Halls. All freshmen men are required, by order of the Board of Trustees, to live in the halls unless excused by the Dean of Men. Upperclassmen will be accepted in the residence halls to the limit of available space. The Office of the Dean of Men has a list of rooms in the city which are available to students and will be glad to furnish a list to any who are interested.

For the 1947 Summer Quarter, prices of rooms in the Men's Halls will be as follows: Suites, \$40 per person; triple rooms, \$34 per person; double rooms, \$30 per person; single rooms, \$40 per person. For one term of the summer quarter prices will be approximately half those stated for the full quarter.

Barracks: These were erected by the Federal Housing Administration and are operated under Government direction. Rent for the quarter per person will be \$30 and \$36; for the term, \$16 and \$19. The rental per month on units for married students is from \$26.50 to \$41.00.

University Cafeteria. Meals will be served at the University Cafeteria during the Summer Quarter.

Rooms and Board in Lexington. All prospective University of Kentucky students should make arrangements for living quarters before coming to Lexington. For information relative to available rooms the student should apply to the Office of the Dean of Women, or Dean of Men. The housing shortage has seriously limited the number of available rooms in the city.

UNIVERSITY HEALTH SERVICE

The services of a physician and nurse and complete infirmary facilities will be available during both terms to the students registered in the Summer Quarter.

REQUIREMENTS FOR GRADUATION

Undergraduate Colleges. To be eligible for graduation from any under-graduate college of the University, a student must have completed the requirements of the curriculum as approved by the

* The University reserves the right to change this figure in view of constantly rising living costs.

University Faculty. In addition to gaining the specified number of quarter hours he must have an equal number of quality points—that is, a standing of 1.0.

Regardless of the length of time the student has attended the University, a minimum of forty-five of the last fifty-four quarter hours presented for the degree must be completed in residence at the University.

Not more than forty-eight of the quarter hours required for an undergraduate degree may be gained by extension, special examination, or both. A student may not satisfy in excess of one-half the requirements for a major by extension, special examination, or both.

The Graduate School. A student is required to satisfy the requirements for the degree for which he is a candidate as of the date on which he enters the Graduate School. In all cases, however, a minimum residence of one year (36 weeks) is required for the master's degree, and three years (108 weeks) for the doctorate. See the Catalog or Graduate Bulletin for the specific requirements for the various graduate degrees.

No transferred credits are accepted toward the master's degree. Two years of graduate work from a fully accredited institution which offers the doctor's degree may be accepted toward the Ph.D. degree.

Theses must be presented in final form to the Dean of the Graduate School not later than three weeks before the date set for the final examination. The final examination must be taken at least fifteen days before the close of the quarter.

A graduate student must maintain a standing of 2.0 and no grade below C shall be counted.

No graduate credit is given for courses taken by correspondence or class extension.

No work is given graduate credit unless the student was enrolled in the Graduate School at the time during which the work was taken.

Application for a Degree. All students in residence during the first term who are to be candidates for degrees in August should make formal application in the office of the Registrar on Friday, June 27. All applications for degrees must be filed not later than Thursday, July 31. No applications for graduation in August will be received after this date. The student is responsible for making application for the correct degree. That is, if a student is working for the degree, Bachelor of Arts in Education, he should apply for this degree and not make application for the degree, Bachelor of Arts, granted in the College of Arts and Sciences. If, for any reason, a student does not receive the degree at the time indicated on the application, it will be necessary for him to file another appli-

cation, as the University is not responsible for carrying over applications from one session to another.

COLLEGE OF ARTS AND SCIENCES

The college courses are planned to meet the needs of various classes of students. They may be listed under the following heads:

1. General cultural courses with majors and fields of concentration, leading to the degrees of A.B. and B.S.
2. Professional courses in industrial chemistry, leading to the degree of B.S. in Industrial Chemistry; in journalism, leading to the degree of A.B. in Journalism; in library science, leading to the degree of B.S. in Library Science; in music, leading to the degree of A.B. in Music; and in bacteriology, leading to the degree of B.S. in Medical Technology.
3. Professional courses in which the general requirements for the A.B. and B.S. degrees are fulfilled.
4. Pre-Professional courses meeting the requirements for admission to professional schools.
5. Combined courses, by means of which students may save a year or more in gaining both the A.B. or B.S. and a degree in Law, Medicine, or Dentistry.
6. Graduate courses leading to the master's and doctor's degrees in the Graduate School.

The Degree of Bachelor of Arts. For the degree of Bachelor of Arts the student is required to gain a total of 192 quarter hours and 192 points; that is, a standing of 1.0, subject to the following conditions.

OUTLINE OF REQUIREMENTS FOR GRADUATION

Lower Division—Freshman and Sophomore Years

General Requirements:

Freshman Orientation, first quarter, freshman year, 1 quarter hour.

English, first, second, and third quarters, freshman year, 9 quarter hours.

General Hygiene, first, second, or third quarter, 2 quarter hours.

Physical Education, freshman and sophomore years, passing the physical education achievement tests.

Military Science (men), freshman and sophomore years, 12 quarter hours.

Group Requirements:

Humanities, freshman or sophomore year, 8 to 10 quarter hours. (Literature, Art, Music, Philosophy.)

Social Studies, freshman or sophomore year, 8 to 10 quarter hours. (Economics, Geography, History, Political Science, Sociology.)

Physical Sciences, freshman or sophomore year, 8 to 10 quarter hours. (Astronomy, Chemistry, Geology, Mathematics, Physics.)

Biological Sciences, freshman or sophomore year, 8 to 10 quarter hours. (Anthropology, Bacteriology, Botany, Physiology, Psychology, Zoology.)

Foreign Languages until proficiency examination is passed on 10 quarter hours. (French, German, Greek, Italian, Latin, Spanish.)

Ways in Which the Group Requirements May Be Satisfied

1. *The Humanities.* All lower division students will be required to complete a series of three introductory courses in the Humanities (for a total of nine quarter hours), to be chosen in any combination of three from the following specific courses, except that one, and not more than two, shall be selected from the literature courses: (Each of these courses will carry three quarter hours.)

English A, Introduction to Humanities Through English Literature; Romance Language A, Introduction to Humanities Through Romance Literature; German A, Introduction to Humanities Through German Literature; Philosophy A, Introduction to Humanities Through Philosophy; Music A, Introduction to Humanities Through Music; and Art A, Introduction to Humanities Through Art.

2. *The Social Studies.* The student is permitted to choose one of the following sequences, to satisfy the group requirement in the social studies: (Each sequence will carry ten quarter hours.)

History 10a, b, or Political Science 10a, b, American Civilization; History 8a, b or Political Science 8a, b, European Civilization; Sociology 3a, b or Geography 3a, b, Societies Around the World.

3. *The Biological Sciences.* Those students who, upon entering the University, state that they expect to elect a science curriculum shall satisfy the biological group requirements of the lower division by any general course or courses in one of the departments of the biological group. Other students shall satisfy the group requirements in the biological sciences by taking any two of the following courses: Anatomy and Physiology 2; Anthropology 1 or 2; Botany 25; Psychology 1; Zoology 25.

4. *The Physical Sciences.* Students will be permitted to take work in either one or two departments in order to satisfy the physical science group requirement. The student may choose eight or more hours from the following courses: Astronomy 51a, b; Chemistry 1a, b, 4a, b, Geology 50a, b, c, (50a is prerequisite for 50b or c), 14a, b, c (in connection with 50a, b, c), 3, 30a, b, c, 52; Mathematics 5a, b (only one counted on group), 17, 3, 19; Physics 1a, b, c, 3a, b, c, 51, 52, 53 (51 is prerequisite for 52 or 53).

Freshman Core Curriculum	Qtr. Hrs.
Orientation	1
General Hygiene	2
Military Science (men)	6
Physical Education—3 quarters	0
English	9
Humanities, or Social Studies	8-10
Physical or Biological Sciences	8-10
Foreign Languages or free electives	10

Total number of quarter hours required in Lower Division, 96.

The normal load per quarter is 16 quarter hours.

Rules and Procedures

1. Superior Students: Entering freshmen, in the upper twenty-five per cent of the classification scale, as determined by University of Kentucky classification tests, may substitute other courses in the groups for those courses which are set up especially to satisfy group requirements. Other students, in the top twenty-five per cent of the classification scale of the University of Kentucky classification tests, with a standing of 2, may be granted the same privilege.
2. The requirements in whole or in part for English, for General Hygiene, and for any of the Groups under Section II, may be satisfied without credit by passing a departmental proficiency examination.
3. A student deficient in English, as indicated by the freshman tests, will be required to pass English D (with no credit) in his first quarter, and the regular freshman English course in his second, third, and fourth quarters, or whenever he has satisfactorily removed the deficiency.
4. A student deficient in mathematics, as indicated by the freshman tests, will be required to pass Mathematics D (with no credit).

Upper Division—Junior and Senior Years

Field of Concentration. Sixty quarter hours are to be elected subject to the approval of the student's adviser and the Dean of the College, and must be in courses not open to freshmen.

Major. At least 22 quarter hours of the required 60 in the field of concentration must be in one department, the major department, exclusive of courses open to freshmen. However, the major department may require more than the minimum 22. A minimum of 8 quarter hours is required as a prerequisite for a major in any department. **A Topical Major** is also offered, which is not confined to one department or field.

The Four Generically Related Fields Are: 1. Literature, Philosophy, and the Arts. 2. Social Studies. 3. Physical Sciences. 4. Biological Sciences.

Tutorial Work and Comprehensive Examinations. Students majoring in the departments of Anatomy and Physiology, Ancient Languages, Art, Botany, Economics, Geology, German, Journalism, Mathematics and Astronomy, Music, Philosophy, Physical Education, Physics, Political Science, Romance Languages, Social Work, Sociology, and Zoology will be required to schedule tutorial courses as specified by their major department and to take final comprehensive examinations as a prerequisite for graduation for major students in these departments.

COLLEGE OF AGRICULTURE AND HOME ECONOMICS

Agriculture

To receive the degree of Bachelor of Science in Agriculture a student must complete 204 quarter hours and 204 quality points. These hours are classified as follows:

Prescribed subjects, non-agriculture.....	59 hours
Prescribed subjects, agriculture	48 hours
Electives required in agriculture	45 hours
Electives required in social studies, humanities, foreign language, or mathematics	10 hours
Free electives	42 hours
	<hr/>
Total	204 hours

The liberal system of electives enables a student to take a general course or to pursue some specialization in a chosen field. Options from which a choice may be made are: General agriculture, extension, high school teaching, agricultural entomology, agronomy, animal husbandry, dairying, poultry, farm economics and rural sociology, markets and rural finance, horticulture, and agricultural science.

Students planning to prepare for professional work in agricultural engineering, veterinary medicine, forestry, or the rural ministry may take work that will permit them to enter these schools. A two-year, non-degree course is provided for those who do not desire to complete the degree requirements. The poultry

short course will be held in August and plans are being made for other short courses.

Home Economics

To receive the degree of Bachelor of Science in Home Economics a student must complete 204 quarter hours and 204 quality points. These hours are classified as follows:

Prescribed subjects, non-home economics	69 hours
Prescribed subjects, home economics	70 hours
Electives required in home economics.....	17 hours
Free electives	48 hours
	Total
	204 hours

Through the proper choice of electives a student may take a general course or may pursue some specialization in one of the following options: General home economics; high school teaching; extension; institution economics and dietetics; clothing, textiles, and related art; and child development and family living. The Summer Quarter offers unusual opportunity for choice of electives in all of these options.

COLLEGE OF ENGINEERING

Admission. For admission to the freshman class in the College of Engineering, applicants should present one and one-half units in Algebra, one unit in Plane Geometry, and one-half unit in Solid Geometry, other requirements being the same as specified for admission to the freshman class in general. Applicants meeting all of the general requirements, except the half unit in Solid Geometry, may be admitted to the freshman class, but will be required to remove the deficiency during the freshman year. It is desirable, but not obligatory, that applicants also have high school credit in Chemistry, Physics, and Trigonometry. Admission to the freshman class of this college is limited to students rated in the upper three-quarters on the placement tests.

Courses of Study and Degrees. The College of Engineering offers instruction leading to the following baccalaureate degrees:

- Bachelor of Science in Civil Engineering
- Bachelor of Science in Electrical Engineering
- Bachelor of Science in Mechanical Engineering
- Bachelor of Science in Metallurgical Engineering
- Bachelor of Science in Mining Engineering

The courses of study leading to these degrees are identical during the first two quarters of the freshman year. This gives the student the benefit of a period of training in fundamental subjects before he is required to choose among the different fields.

There will be a freshman class in engineering beginning work in the Summer Quarter of 1947.

COLLEGE OF LAW

The Summer Quarter is a regular part of the work of the school, and the same quantity and quality of work is required as in the regular session. An effort has been made to provide a full program, not only for the beginning students, but also for those who have completed part of a law course. One-third of the year's work can be completed in a summer quarter so that by attending three summer quarters a student may complete the full three-year curriculum in two calendar years.

The courses in the College of Law for the Summer Quarter are planned with special reference to three types of students: first, students who desire to shorten the three-year period by studying during the summer; second, public school teachers who desire to know something about the law either for their own benefit or for the purpose of advising students; third, lawyers, probate judges, and prosecuting attorneys who desire either to complete their work for a degree or to become acquainted with recent developments of the law.

The law library is one of the best in the South, consisting of over 31,000 volumes. It receives regularly approximately 100 legal periodicals.

The Order of the Coif was established in 1931. Summer school students are entitled to consideration for membership in this Order on the completion of their work.

The Law School publishes the Kentucky Law Journal four times a year.

COLLEGE OF EDUCATION

The College of Education grants the degree of Bachelor of Arts in Education.

To be admitted to the College of Education a student shall meet the following requirements: standing of at least 1.0 (average of C on all previous work) or, if an entering freshman, he must rank in the upper three-fourths on the University placement tests.

For a degree in education the student is required to present a total of 192 quarter hours with standing of 1.0.

General Requirements for Students in the Field of Secondary Education

1. Minimum General Preparation	Quarter Hours
English	16
Psychology	8
Physical Education	0
Military Science (for men only)	12

2. Teaching Fields		
Two majors (36+36)		72
or		
One major, two minors (36+24+24)		84
or		
An Area of Concentration		72
3. Professional Preparation*		
Education 35		2
Education 16		5
Education 101		4
Education 105		4
Directed Teaching		12
4. Core Curriculum		40
At least forty quarter hours must be submitted from the fields listed below. No candidate may present fewer than three nor more than four fields, nor fewer than eight quarter hours in any field; nor may any candidate select under the core curriculum any field which he uses as a major or minor.		
Fine Arts	Philosophy and Psychology	
Science	Foreign Languages	
Social Science	Vocational Subjects	
Mathematics	Health, Physical Education, and Safety	

General Requirements for Students in the Field of Elementary Education

	Quarter Hours
1. English	16
a. Oral and Written Composition	
b. History of English Literature	
2. Science	16
a. Heredity	
b. Electives	
3. Social Sciences	32
a. History—American and Kentucky	
b. Political Science	
c. Sociology	
d. Geography	
4. Fine Arts	12
a. Public School Art	
b. Elective in Art	
c. Public School Music	

* Music and Art Majors should substitute Education C44 for Education 35. Physical education majors should substitute P. E. 129, Physical Education in the Secondary School, for Education 35. Business Education Majors should substitute Education 104 and Education 158a, b for Education 101 and Education 105.

5. Health and Physical Education	11
6. Psychology	10
7. Professional Preparation	47
a. Fundamentals of Elementary Education	
b. Children's Literature	
c. Teaching Arithmetic	
d. Teaching Science	
e. Teaching Reading	
f. Industrial Arts	
g. Supervised Student Teaching	
8. Electives, including Principles of Nutrition.....	48

COLLEGE OF COMMERCE

The degree of Bachelor of Science in Commerce is conferred upon students who meet the requirements of any one of the following curricula: General-Business, Business-Management, Industrial-Administration, Marketing and Advertising, Commerce-Law, and Secretarial. The minimum number of quarter hours required for graduation is 192, except under the Industrial-Administration Curriculum which requires 216. The scholastic standing must be at least 1.0. Unless two units in the ancient or modern foreign languages are offered for entrance, one year of language in college is required for graduation under all curricula except the Industrial-Administration. Regardless of the minimum requirements all commerce students are urged to take some foreign language.

THE GRADUATE SCHOOL

The Growth of the Graduate Program. The demand for graduate work at the University of Kentucky has grown rapidly in recent years. High school teachers, supervisors, principals and superintendents of schools, and teachers in normal schools and junior and senior colleges are seeking the education and training represented by higher degrees. To meet this demand, the several colleges of the University are providing larger programs of work for graduate students.

Residence Credit. A graduate student must carry at least six quarter hours in each term of the Summer Quarter to be entitled to full residence credit for that term.

Applicants for Graduate Degrees. Applications for degrees must be made at least four weeks before the date of commencement. These applications are made at the office of the Registrar of the University.

Requirements for the Master's Degree. A candidate for the degree of Master of Arts or Master of Science is required to complete 36 quarter hours of graduate work of which two-thirds is in

a major and one-third in electives, spend a full year in residence, present an acceptable thesis, have a reading knowledge of one modern foreign language and pass a final oral examination. He must maintain a standing of 2.0.

Requirements for Professional Degrees. The professional degree of M.A. or M.S. in Education, or M.S. in Agriculture or Home Economics, may be secured with the same requirements except that there is no language requirement and, that with the permission of the department concerned, 18 additional quarter hours and 12 additional weeks may be offered in lieu of a thesis.

General Requirements for a Master's Degree. All candidates for any master's degree must have completed the equivalent of a B.A. or B.S. degree in a fully accredited institution. Part-time residence during any quarter is computed on the basis of one week of residence for each quarter hour earned, but the amount of residence for part-time work is limited, except for graduate assistants and part-time instructors, to not more than four weeks in any one quarter. No credit toward advanced degrees is allowed for correspondence or extension work and no transferred credit is accepted toward a master's degree.

General Requirements for the Doctor's Degree. The degree of Doctor of Philosophy is offered with major work in the following departments: Agricultural Economics and Rural Sociology, Chemistry, Education, Economics, English, History, Mathematics, Physics, Psychology, Political Science, and Romance Languages. Minor work may be carried in any department offering graduate courses.

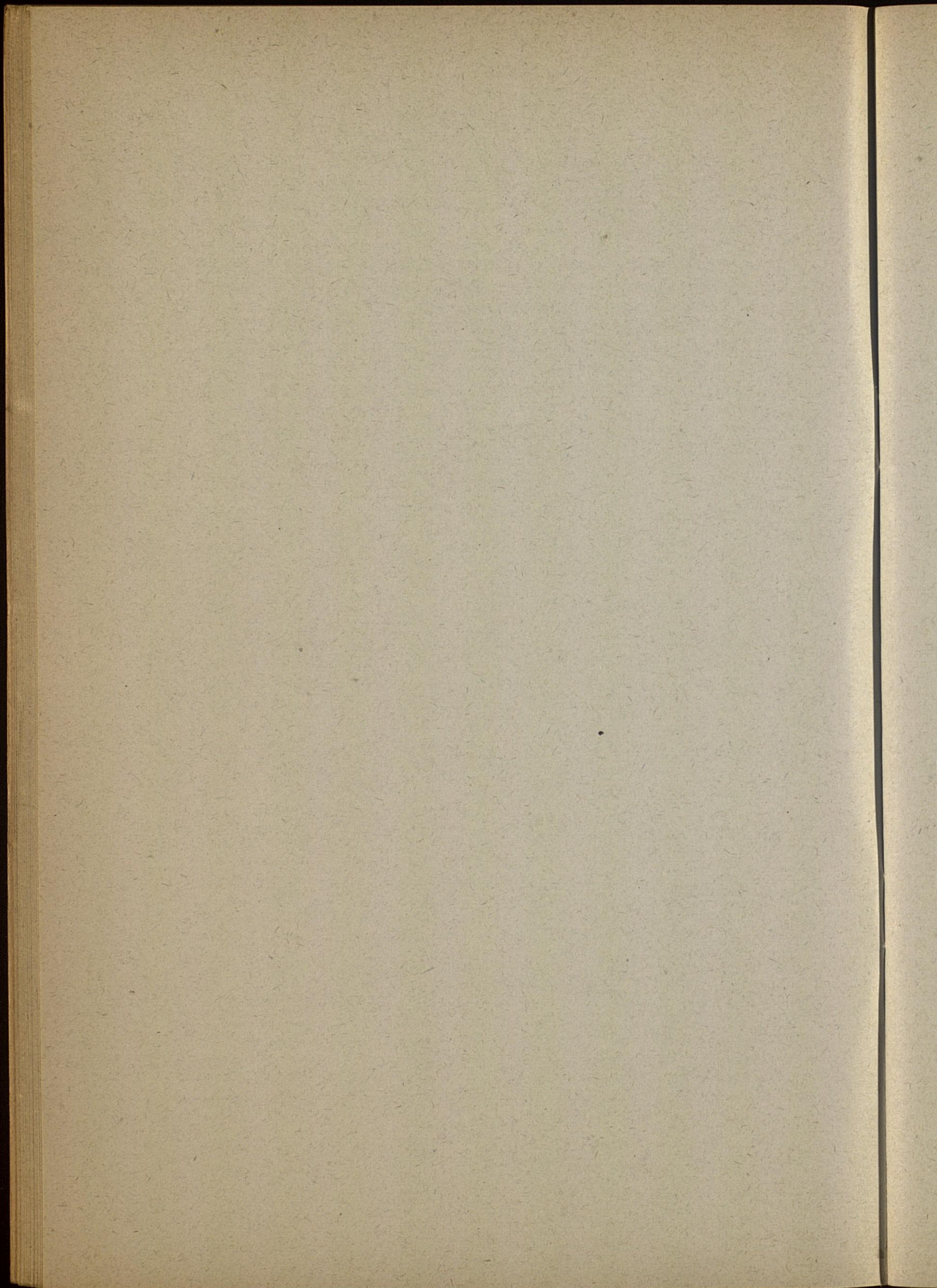
The degree of Doctor of Philosophy is conferred upon a candidate who after completing not less than three years of graduate work devoted to the study of a special field of knowledge, satisfies the language requirements, passes the required examination in the subjects, presents a satisfactory dissertation, and is deemed worthy of recognition as a scholar of high attainments in his chosen province.

The doctor's degree is intended to represent not a specified amount of work covering a specified time, but the attainment through long study of independent and comprehensive scholarship in a special field. Such scholarship should be shown by the candidate's thorough acquaintance with present knowledge in his special field of learning and a marked capacity for research.

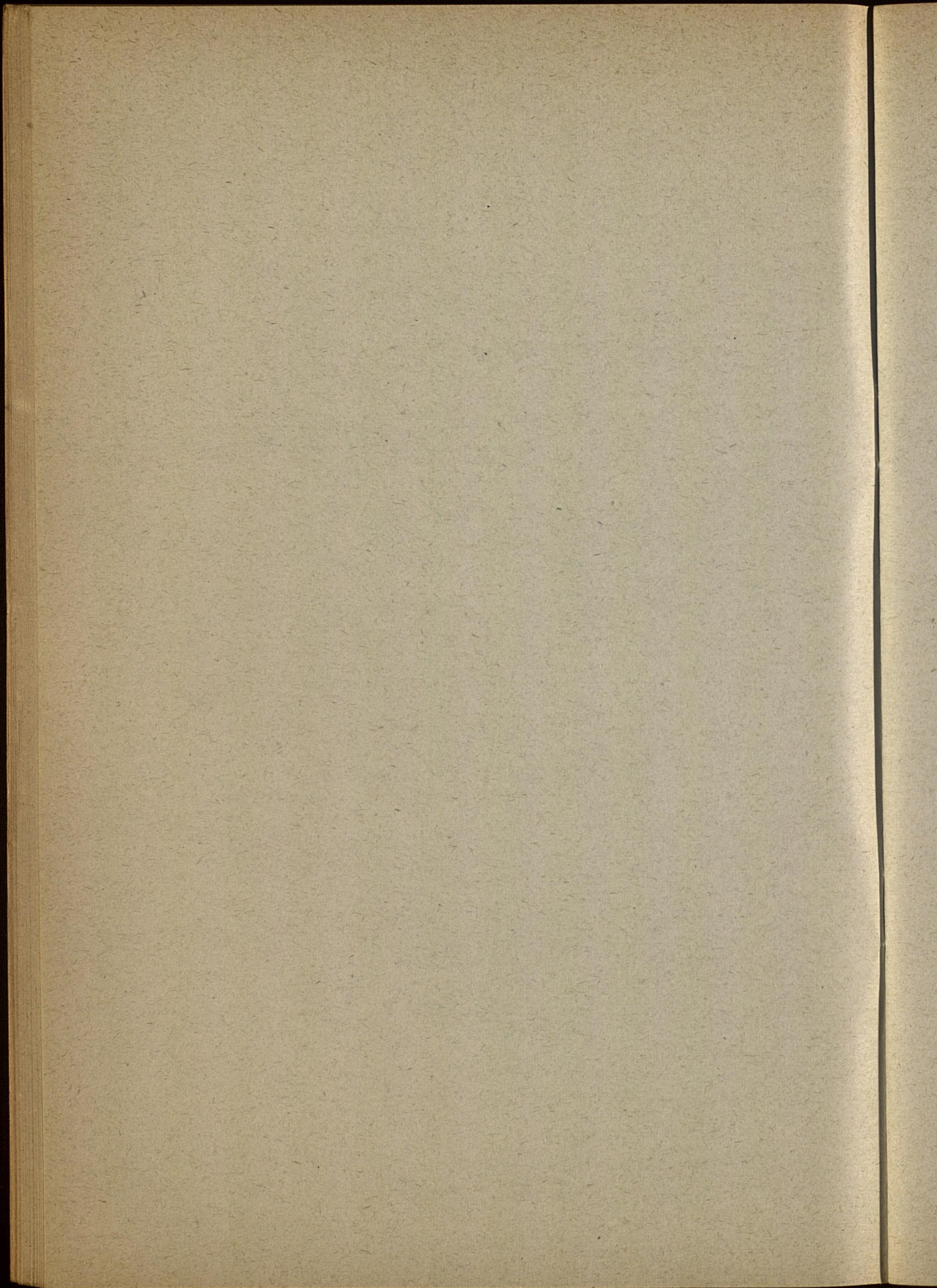
A minimum of three collegiate years of resident graduate work, of which at least the last year must be spent at the University of Kentucky, is required for the doctorate. The full time of each of these years must be spent in study. Part-time students and those holding assistantships or engaging in other outside activities will of course be required to take a proportionately longer time.

While it is expected that a well prepared student of good ability may secure the degree upon the completion of three years of study, it should be understood that this time requirement is a minimum and is wholly secondary to the matter of scholarship. Neither time spent in study, however long, nor the accumulation of facts, however great in amount, nor the completion of advanced courses, however numerous, can be substituted for independent thinking and original research.

Work done in other institutions of learning may be accepted toward the doctorate at the University of Kentucky but no work is credited which has not been done in a college or university of recognized standing or in a research laboratory.



Part II
SCHEDULE OF CLASSES
BY COLLEGES AND DEPARTMENTS



EXPLANATIONS AND ABBREVIATIONS

Colleges are arranged according to order in the catalog and in general, the departments of each College are arranged alphabetically.

Days of recitations are indicated by the initial letters of the days. For example, M-Th indicates the class is offered Monday through Thursday, M-S indicates the class is offered Monday through Saturday, etc.

The buildings are indicated as follows:

A, Administration	MeH, Memorial Hall
AE, Agricultural Engineering	MeL, Meat Laboratory
AP, Animal Pathology	MG, Men's Gymnasium
Agr, Agriculture	MH, Miller Hall
BH, Barker Hall	ML, Mining Laboratory
BS, Biological Sciences	Museum
D, Dairy	NH, Neville Hall
E, Education	NorH, Norwood Hall
Eng, Engineering	NS, Nursery School
FH, Frazee Hall	Obs, Observatory
GA, Gymnasium Annex	Pence, Pence Hall
HB, Health and Hygiene	SP, Stock Judging Pavilion
HE, Home Economics	TL, Tobacco Laboratory
KH, Kastle Hall	UL, University Library
L, Lafferty Hall	WG, Women's Gymnasium
McVH, McVey Hall	WH, White Hall

RECITATION HOURS

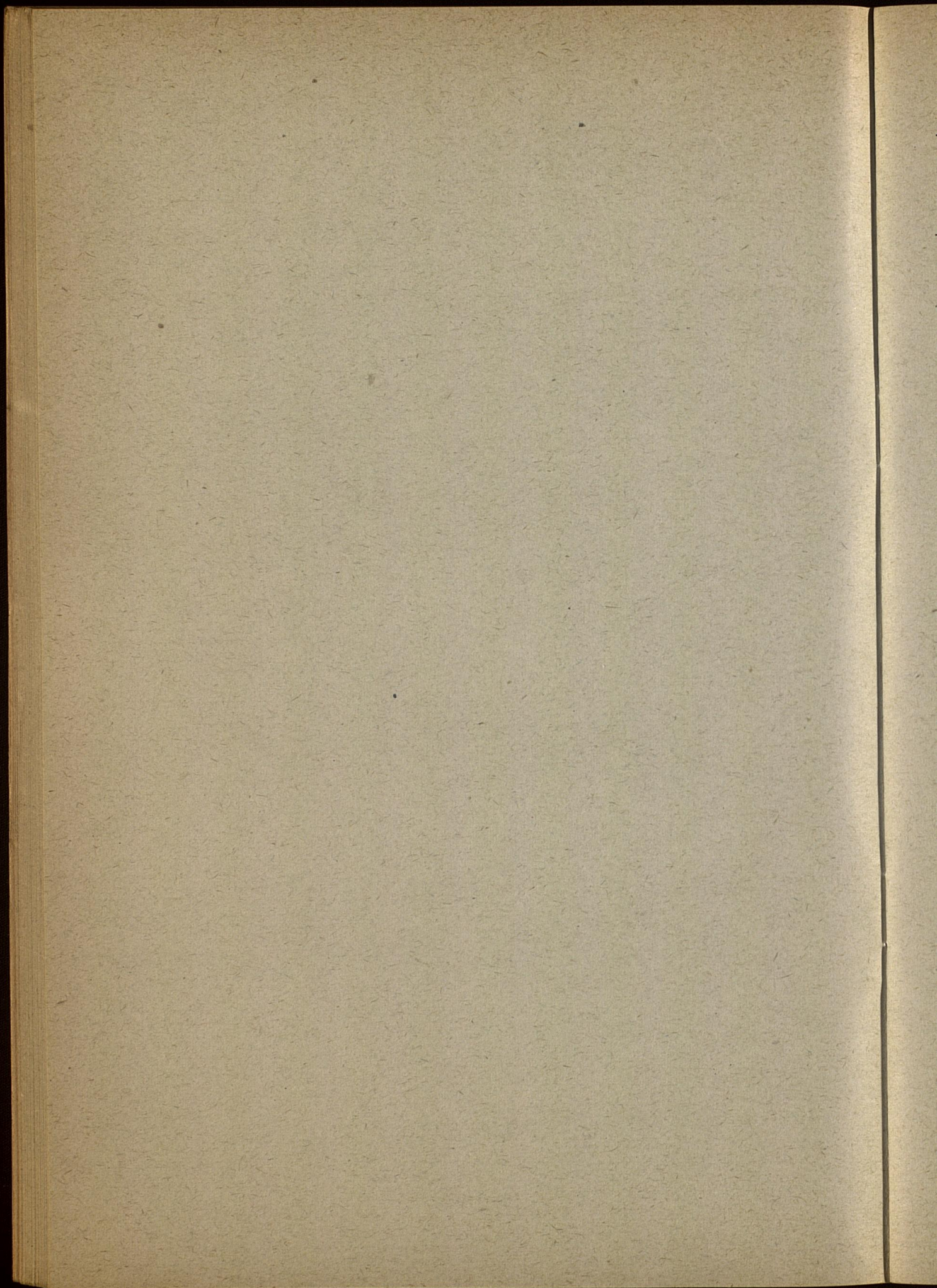
First Hour	7:00— 8:15
Second Hour	8:25— 9:40
Third Hour	9:50—11:05
Fourth Hour	11:15—12:30
Fifth Hour	12:40— 1:55
Sixth Hour	2:05— 3:20
Seventh Hour	3:30— 4:45

INSTRUCTIONS FOR CLASSIFICATION

1. After you have registered go to the Dean's booth in the Men's Gymnasium, for information and assignment to your adviser.
2. Make out your schedule with the help of your adviser.
3. In making out your schedule write, in the proper spaces, the name of the department with course and section numbers.

4. After classes are assigned leave two copies of your schedule at your Dean's booth.
5. **Any changes** from the original schedule must be made in the Dean's office. To drop a subject at any time during the quarter, you should first consult your dean.
6. Extra work petitions must be presented when schedules exceed the amount permitted by the college in which you are enrolled. A standing of 2.0 is required.
7. Four copies of your completed schedule, must be filed with your Dean before the close of the registration period.
8. A course cannot be added to your schedule after June 23 for the First Term or July 31 for the Second Term.

FIRST TERM



FIRST TERM—SUMMER 1947
COLLEGE OF ARTS AND SCIENCES
 Martin Marshall White, Dean

Course No.	Subject	Qtr. Hrs.	Hour	Days	Building	Room No.	Instructor
------------	---------	-----------	------	------	----------	----------	------------

AGRICULTURE

A student in the College of Arts and Sciences may elect toward the A.B. or B.S. degree a total of 45 quarter hours from other colleges of the University.

ANATOMY AND
PHYSIOLOGY

R. S. Allen, Head of Department, Biological Science Bldg., 304.

UPPER DIVISION REQUIREMENTS—Junior and Senior Years

Requirements in the Field of Concentration: Sixty quarter hours of advanced work in the field of Biological Sciences during the junior and senior years, including the major work.

Requirements for a Major. Prerequisites: Anatomy and Physiology 1a, 1b; Zoology 1a, 1b, 1c; Physics 1a, 1b, 1c; Chemistry 1a, 1b. **Required:** A minimum of 21 quarter hours of advanced work in Anatomy and Physiology plus Seminar 116a, 116b, 116c) and passing a comprehensive examination in the senior year.

LOWER DIVISION REQUIREMENTS—See Page 18.

1a	General Physiology	4	2	M-F	BS	313	Wiedeman
	Courses open only to Junior, Senior, and Graduate Students:						
104a-d	Independent Work in Physiology	4		By Appt.	BS	303	Wiedeman
106	Introduction to Endocrinology..	4	3	M-F	BS	307	Allen
108a ₁	Advanced Physiology, Lec., Rec.	4	2	M-W	BS	307	Allen
108a ₂	Advanced Physiology, Lab.....	4		5, 6	ThF	BS	307
	Courses open only to Graduate Students:						
201a-d	Research in Physiology	6		By Appt. M-S	BS	304a	Allen
	Full Quarter Courses						
*2	Elementary Anat. and Physiol., Lec., Rec., and Dem.....	5		{ 9:50- 10:40 }	M-S	BS	313 Cole
*6a ₁	Gen. Anat. and Physiol. for Nurses, Lec. and Rec.....	4		{ 7:00- 8:00 }	MWF	BS	313 Wiedeman
*6a ₂	Gen. Anat. and Physiol. for Nurses, Lab.	4		{ 7:00- 9:10 }	S	BS	306 Wiedeman
3 ₁	Physiology (Home Ec.), Lec., Rec.	5		{ 1:00- 2:00 }	MWF	BS	313 Cole
3 ₂	Physiology (Home Ec.), Lab...	5		{ 2:00- 4:10 }	MW	BS	306 Cole
4 ₁	Elementary Anat. (Phys. Ed.), Lec., Rec.	5		{ 7:00- 8:00 }	MWF	BS	307 Cole
4 ₂	Elementary Anat. (Phys. Ed.), Lab.	5		{ 7:00- 9:10 }	TTh	BS	306 Cole
	Courses open only to Juniors, Seniors, and Graduate Students:						
107 ₁	Advanced Anatomy, Lec., Rec.	5		{ 11:15- 12:05 }	TThFS	BS	307 Allen
107 ₂	Advanced Anatomy, Lab.	5		{ 1:00-2:50 }	MW	BS	308 Allen

* Open to Freshmen.

FIRST TERM—SUMMER 1947
COLLEGE OF ARTS AND SCIENCES—Continued

Course No.	Subject	Qtr. Hrs.	Hour	Days	Building	Room No.	Instructor
ANCIENT LANGUAGES							

Administration Bldg., 5 or 303.

UPPER DIVISION REQUIREMENTS—Junior and Senior Years

Requirements in the Field of Concentration: 60 quarter hours of advanced work in the field of Literature, Philosophy, and the Arts during the junior and senior years, including the major work.

Requirements for a Major. Prerequisites: First two years of college Latin.

Required: A minimum of 22 quarter hours of advanced work in A. L.: Tutorial Work; comprehensive examination in senior year.

Note.—No credit given when work done in High School is repeated. One year of High School language is considered the equivalent of one quarter of University work. Two courses at same hour not allowed. No credit given in A. L. 1a until A. L. 1b has been completed.

LOWER DIVISION REQUIREMENTS—See Page 18.

*C1a, b	Beginning Latin (1st or 2nd half)	4	1	M-F	A	303	
*C2	Caesar and Selections	4	2	M-F	A	303	
*C3	Cicero and Selections						
*C4a	Vergil						
*C5	Livy						
*C6a, b	Horace						
*C51a.	Beginning Greek						
Courses open only to Upper Division and Graduate Students:							
C120	Survey of Greek Civilization.... (In English, does not count as foreign language requirement.)	4	3	M-F	A	303	
C150a, b	Teacher's Course in Latin	4	By Appt.	M-F	A	303	
C151a-d	(Based on first year's work.) Independent Work in Ancient Languages	4	By Appt.	M-F	A	303	

ANTHROPOLOGY

W. S. Webb, Head of Department, Pence Hall 101.

Courses open only to Upper Division and Graduate Students:							
106	Ethnology of Europe	3	3	{ MT } { WTh }	BS	200	Funkhouser
Full Quarter							
Courses open only to Upper Division and Graduate Students:							
110a	Field Work in Archaeology.....	4	By Appt.		{ Museum } B		Haag

* Open to Freshmen.

FIRST TERM—SUMMER 1947
COLLEGE OF ARTS AND SCIENCES—Continued

Course No.	Subject	Qtr. Hrs.	Hour	Days	Building	Room No.	Instructor
ART							
Edward W. Rannells, Head of Department, Biological Sciences Building 219-222.							
UPPER DIVISION REQUIREMENTS—Junior and Senior Years							
Requirements in the Field of Concentration: 60 quarter hours of advanced work in the field of Literature, Philosophy, and the Arts during the junior and senior years, including the major work.							
Requirements for a Major. Prerequisites: Art 61a, 61b (drawing), 62 (design), 35, 36 (history of art). Required: A minimum of 30 quarter hours—12 to 16 in studio courses, 12 to 16 in history of art, plus the senior seminar and comprehensive examination in the senior year.							
LOWER DIVISION REQUIREMENTS—See Page 18.							
*A	An Introduction to the Humanities Through the Study of Art	3	4	M-F	BS	211	Callihan
10a	Public School Art	3	6, 7	TTh	BS	314	Callihan
			(and 6 clock-hrs. by Appt.)				
*61a	Elementary Drawing	4	6, 7	MWF	BS	213	Rannells
			(and 8 clock-hrs. by Appt.)				
*62	Basic Design	4	6, 7	MWF	BS	214	Barnhart
			(and 8 clock-hrs. by Appt.)				
C64a, b	Intermediate Design	3	6, 7	TTh	BS	214	Barnhart
			(and 7 clock-hrs. by Appt.)				
65a, b, c	Painting	4	6, 7	TTh	BS	316	Rannells
			(and 11 clock-hrs. by Appt.)				
C65a, b, c	Painting	3	6, 7	TTh	BS	316	Rannells
			(and 7 clock-hrs. by Appt.)				
C165a, b, c	Advanced Painting	3	6, 7	TTh	BS	316	Rannells
			(and 7 clock-hrs. by Appt.)				
119a-c	Independent Work: Design, Construction	4	By Appt.				Staff

(Note.—All four-quarter-hour courses in Drawing, Painting, or Design will require 20 studio hours per week for full credit for the summer term of five weeks; but they also may be scheduled for limited credit with studio hours reduced in proportion, e. g., 10 studio hours for half-credit.)

BACTERIOLOGY

M. Scherago, Head of Department, Biological Sciences Building, 103.

UPPER DIVISION REQUIREMENTS—Junior and Senior Years

Requirements in the Field of Concentration: Six quarter hours of advanced work in the field of Biological Sciences during the junior and senior years, including the major work.

Requirements for a Major. Prerequisites: Chemistry 1a, b; Bact. 2b or 52 and 104. **Required:** Three quarter hours of Seminar and a minimum of 20 additional quarter hours of advanced work in Bacteriology, including Bact. 125a and b.

Note.—For outline of course leading to the degree B.S. in Medical Technology consult the University catalog.

LOWER DIVISION REQUIREMENTS—See Page 18.

* Open to Freshmen.

FIRST TERM—SUMMER 1947
COLLEGE OF ARTS AND SCIENCES—Continued

Course No.	Subject	Qtr. Hrs.	Hour	Days	Building	Room No.	Instructor
BACTERIOLOGY—Cont.							
*2a ₁	Elem. Microbiology, Lec.	6	{	By Appt.	M-S	BS	124 Weaver
*2a ₂	Elem. Microbiology, Lab.			M-S	BS	208 Muedeking	
C56a ₁	Bact. of Foods, Lec.	3, 3	{	9:50-	M-S	BS	124 Weaver
b ₁				10:40-			
C56a ₂	Bact. of Foods, Lab.		{	10:40-	M-S	BS	207 Muedeking
b ₂				12:30			
Open only to Upper Division and Graduate Students:							
102 ₁	General Bacteriology, Lec.	6	{	7:00-7:50	M-S	BS	124 Edwards
102 ₂	General Bacteriology, Lab.			7:50-9:40	M-S	BS	210 Edwards
103 ₁	Pathogenic Bact., Lec.	6	{	1:30-	M-F	BS	124 Humphries
103 ₂	Pathogenic Bact., Lab.			2:30			
104	Applied Bact., Lab.	3	{	By Appt.	M-S	BS	207 Muedeking
110a, b	Lab. Diagnosis	3, 3	{	7:00-	M-S	BS	206 Hotchkiss
111 ₁	Gen. Pathology, Lec.	6	{	10:30			
111 ₂	Gen. Pathology, Lab.			By Appt.	M-S	BS	125 Scherago
115a-f	Independent Work, Lab.	4	{	By Appt.	M-S	BS	206 Staff
120a, b, c	Hosp. Lab. Pract., Lab.	6, 4, 5		By Appt.		Hospital	
Courses open only to Graduate Students:							
201a-f	Research in Bact.	5		By Appt.		BS	Staff
C206a ₁	Bact. of Foods, Lec.	3, 3	{	9:50-	M-S	BS	124 Weaver
b ₁				10:40-			
C206a ₂	Bact. of Foods, Lab.		{	10:40-	M-S	BS	207 Muedeking
b ₂				12:30			

BOTANY

Herbert P. Riley, Head of Department, Norwood Hall, 105.

UPPER DIVISION REQUIREMENTS—Junior and Senior Years

Requirements in the Field of Concentration: Sixty quarter hours of advanced work in the field of Biological Sciences during the junior and senior years, including the major work.

Requirements for a Major. Prerequisites: Botany 1b or 8b. **Required:** A minimum of 30 quarter hours of advanced work in Botany and the passing of a comprehensive examination covering chiefly the fields of morphology, taxonomy, and physiology.

LOWER DIVISION REQUIREMENTS—See Page 18.

*1a	General Botany, Lec.	4	{	5	M-F	NORH	202	McInteer
	General Botany, Lab.			6	M-Th	NORH	202	McInteer
*1b	General Botany, Lec.	4	{	5	M-F	NORH	203	Riley
	General Botany, Lab.			6	M-Th	NORH	203	Riley
Prerequisite: Bot. 1a, 8a, or 25								
*25	General Plant Biology	5		3	M-S	NORH	203	Riley
114	Ecology	5		3	M-S	NORH	202	McInteer
Prerequisite: Bot. 1b or 8b								

* Open to Freshmen.

FIRST TERM—SUMMER 1947
COLLEGE OF ARTS AND SCIENCES—Continued

Course No.	Subject	Qtr. Hrs.	Hour	Days	Building	Room No.	Instructor
CHEMISTRY							
Lyle R. Dawson, Head of Department, Kastle Hall, 105A.							
UPPER DIVISION REQUIREMENTS—Junior and Senior Years							
Requirements in the Field of Concentration: Sixty quarter hours of advanced work in the field of Physical Sciences during the junior and senior years, including the major work.							
Requirements for a Major. Prerequisites: 1a, 1b, 20, 21a, 21b, 21c, and Mathematics through the Calculus. Required: 130a, 130b, 130c, 140a, 140b, 140c, 144a, 144b, 144c, 110a, 110b, 111, 133, 188a, 188b, 188c, and 15 quarter hours to be chosen from the field of Physical Science.							
21a	For prerequisites see Catalog. Quant. Anal., Lec.....		{ 9:50-}				
21a ₁	Quant. Anal., Lab.	4	{ 10:50-}	WF	KH	111	Stewart
21a ₂	Quant. Anal., Lab.		{ 7:00-}	MT	KH	113	Stewart and Asst.
			{ 9:40-}	WTh			
			{ 12:40-}	MT	KH	113	Stewart
			{ 3:20-}	WTh			
37	Organic Chemistry, Lec. and Lab.	6	7:00-9:40	M-S	KH	{ 214 } { 215 }	{ } { Barkenbus }
Full Quarter Courses							
*1a ₁	Gen. Chem., Lec.	5	{ 2:00-2:50	TTh	KH	201	Staff
*1a ₁	Gen. Chem., Rec.		{ 1:00-1:50	F	KH	201	Staff
*1a ₁	Gen. Chem., Lab.		{ 1:00-2:50	MW	KH	101	Staff
*1a ₂	Gen. Chem., Lec.	5	{ 3:30-4:20	TTh	KH	201	Staff
*1a ₂	Gen. Chem., Rec.		{ 3:30-4:20	F	KH	201	Staff
*1a ₂	Gen. Chem., Lab.		{ 3:30-5:20	MW	KH	101	Staff
*1b ₁	Gen. Chem., Lec. and Rec.....	5	{ 8:25-9:15	MWF	KH	201	Staff
*1b ₁	Gen. Chem., Lab.		{ 7:25-9:15	TTh	KH	101	Staff
*1b ₂	General Chemistry, Lec. and Rec.	5	{ 11:15-}				
			{ 12:05-}	MWF	KH	201	Staff
*1b ₂	General Chemistry, Lab.		{ 10:00-}				
			{ 11:50-}	TTh	KH	101	Staff
*2a ₁	Gen. Chem. for Engr., Lec. and Rec.	5	{ 8:25-9:15	TThS	KH	201	Staff
*2a ₁	Gen. Chem. for Engr., Lab.		{ 7:25-9:15	MW	KH	101	Staff
*2a ₂	Gen. Chem. for Engr., Lec. and Rec.	5	{ 11:15-}				
			{ 12:05-}	TThS	KH	201	Staff
*2a ₂	Gen. Chem. for Engr., Lab.		{ 10:00-}				
			{ 11:50-}	MW	KH	101	Staff
*2b ₁	Gen. Chem. for Engr., Lec. and Rec.	5	{ 2:05-2:55	MWF	KH	201	Staff
*2b ₁	Gen. Chem. for Engr., Lab.....		{ 1:00-2:50	TTh	KH	101	Staff
*2b ₂	Gen. Chem. for Engr., Lec. and Rec.	5	{ 3:30-4:20	MWF	KH	201	Staff
			{ 3:30-5:20	TTh	KH	101	Staff
*3b	Chemistry for Nurses, Lec.....	4	{ 8:25-9:15	WF	KH	200	Estes
			{ 9:25-}				
*3b	Chemistry for Nurses, Lab.....		{ 11:05-}	WF	KH	B1	Estes
*20	Qual. Anal., Lec. and Rec.....		{ 9:50-}				
			{ 10:40-}	MWF		214	Sheibley
*20 ₁	Qual. Anal., Lab.	6	{ 12:40-}				
			{ 2:30-}	MW	KH	B1	Sheibley
*20 ₂	Qual. Anal., Lab.		{ 12:40-}				
			{ 2:30-}	TTh	KH	B1	Sheibley

* Open to Freshmen.

FIRST TERM—SUMMER 1947
COLLEGE OF ARTS AND SCIENCES—Continued

Course No.	Subject	Qtr. Hrs.	Hour	Days	Building	Room No.	Instructor
CHEMISTRY—Cont.							
Courses open only to Upper Division and Graduate Students:							
Full Quarter Courses							
110a	Adv. Inorganic Chemistry	3	8:25-9:15	MWF	KH	209	Leader
133	Qual. Organic Anal., Lec.....	5	1 hrs. By Appt.		KH	209	Estes
133	Qual. Organic, Lab.	5	12 hrs. By Appt.		KH	215	Estes
140a	Physical Chem., Lec.	3	11:15-12:05	MWF	KH	B14	Holley
144a	Physical Chem., Lab.	2	12:30-3:20	TTh	KH	B17	Holley
115a	Nuclear Chemistry, Lec.	3	11:15-12:05	MWF	KH	209	Leader
181	Chemical Literature	1	1 hr. By Appt.		KH	205	Sheibley
Chemistry 136a, 136b, will be offered either as term or as quarter courses on request.							
Courses open only to Graduate Students:							
Full Quarter Courses							
222	Electrometric Analysis	4	12 hrs. By Appt.		KH	113	Watters
234a	Electronic Theory as Applied to Org. Reactions	3	3 hrs. By Appt.		KH	209	Estes
240a	Theoretical Electrochemistry ..	3	9:50-10:40	MWF	KH	B14	Dawson
290a-h	Research in Chemistry	5	15 hrs. By Appt.		KH	Arr.	Staff
ECONOMICS							
Economics Majors see Professor L. H. Carter, College of Commerce.							
UPPER DIVISION REQUIREMENTS—Junior and Senior Years							
Requirements in the Field of Concentration: Sixty quarter hours of advanced work in the field of Social Studies during the junior and senior years, including the major work.							
Requirements for a Major. Prerequisites: Two courses in Economics, including Economics 1. Required. A minimum of 28 quarter hours of advanced work in Economics, including Economics 102, 104 and 105; the remainder of credits to be selected from the Arts and Sciences list of Economics courses numbered above 100. In addition tutorial courses 16a, b must be taken in the senior year to prepare for the required comprehensive examination.							
LOWER DIVISION REQUIREMENTS—See Page 18.							
1 ₁	Principles of Economics	5	1	M-S	WH	303	Massie
1 ₂	Principles of Economics	5	3	M-S	WH	303	Ellis
*2	Economic History of Europe....	4	7	M-F	WH	101	Jennings
7a	Principles of Accounting, Rec.	5	1	MWFS	WH	101	Ellis
	Principles of Accounting, Lab.		7, 8	TTh	WH	306	Ellis
*9 ₁	Business Organization	4	2	M-F	WH	303	Tolman
*9 ₂	Business Organization	4	6	M-F	WH	303	Massie
Open only to Upper Division and Graduate Students:							
102	Labor Problems	4	2	M-F	WH	102	Carter
	(Prereq.: Econ. 1)						

* Open to Freshmen.

FIRST TERM—SUMMER 1947
COLLEGE OF ARTS AND SCIENCES—Continued

Course No.	Subject	Qtr. Hrs.	Hour	Days	Building	Room No.	Instructor
ECONOMICS—Cont.							
104	Public Finance (Prereq.: Econ. 1)	4	4	M-F	WH	101	Martin
105	Money and Banking (Prereq.: Econ. 1)	4	1	M-F	WH	103	Carpenter
110	Business Cycles (Prereq.: Econ. 1 and a course in Elem. Statistics)	4	3	M-F	WH	103	Carpenter
112a-f	Indiv. Work in Economics.....1 each			By Appt.			Staff
115	Value and Distribution Theory Courses open only to Graduate Students:	4	8	M-F	WH	103	Sullivan
202a-f	Seminar1 each			By Appt.			Wiest
212a-f	Research Problems in Economics1 each			By Appt.			Staff
EDUCATION							

A student in the College of Arts and Sciences may elect toward the A.B. or B.S. degree a total of 45 quarter hours from other colleges of the University.

ENGINEERING

A student in the College of Arts and Sciences may elect toward the A.B. or B.S. degree a total of 45 quarter hours from other colleges of the University.

ENGLISH

George K. Brady, Acting Head of Department, McVey Hall, 213.

UPPER DIVISION REQUIREMENTS—Junior and Senior Years

Requirements in the Field of Concentration: Sixty quarter hours of advanced work in the field of Literature, Philosophy and the Arts, including thirty quarter hours of advanced work in English.

Requirements for a Major. Prerequisites: English 1a, 1b, 1c, 3a, 3b, 3c. **Required:** A minimum of thirty quarter hours of advanced work in English.

LOWER DIVISION REQUIREMENTS—See Page 18.

*T1a ₁	English Composition, A&S 30....	3	1	M-Th	McVH	204	
*T1a ₂	English Composition, A&S 25, Ed. 5	3	1	M-Th	McVH		
*T1a ₃	English Composition, A&S 25, Ed. 5	3	2	M-Th	McVH	200	
*T1a ₄	English Composition, A&S 25, Ed. 5	3	3	M-Th	McVH	200	
*T1a ₅	English Composition, A&S 30....	3	3	M-Th	McVH		
*T1a ₆	English Composition, A&S 30....	3	4	M-Th	McVH	200	
*T1a ₇	English Composition, A&S 30....	3	4	M-Th	McVH		
*T1a ₈	English Composition, A&S 25, Ed. 5	3	6	M-Th	McVH	200	
*T1a ₉	English Composition, A&S 30....	3	6	M-Th	McVH		
*T1a ₁₀	English Composition, A&S 30....	3	6	M-Th	McVH	200	
*T1a ₁₁	English Composition, A&S 30....	3	7	M-Th	McVH	200	
*T1a ₁₂	English Composition, A&S 30....	3	7	M-Th	McVH		
*T1b ₁	English Composition, A&S 25, Ed. 5	3	1	M-Th	McVH	203	
*T1b ₂	English Composition, A&S 30....	3	2	M-Th	McVH	203	
*T1b ₃	English Composition, A&S 25, Ed. 5	3	3	M-Th	McVH	203	

* Open to Freshmen.

FIRST TERM—SUMMER 1947
COLLEGE OF ARTS AND SCIENCES—Continued

Course No.	Subject	Qtr. Hrs.	Hour	Days	Building	Room No.	Instructor
ENGLISH—Cont.							
*T1b ₄	English Composition, A&S 30....	3	4	M-Th	McVH	203	
*T1b ₅	English Composition, A&S 25, Ed. 5	3	6	M-Th	McVH	203	
*T1b ₆	English Composition, A&S 30....	3	6	M-Th	McVH		
*T1b ₇	English Composition, A&S 30....	3	7	M-Th	McVH	203	
*T1b ₈	English Composition, A&S 30....	3	7	M-Th	McVH		
*T1c ₁	English Composition, A&S 25, Ed. 5	3	1	M-Th	McVH	211	
*T1c ₂	English Composition, A&S 30....	3	2	M-Th	McVH	211	
*T1c ₃	English Composition, A&S 25, Ed. 5	3	3	M-Th	McVH	206	
*T1c ₄	English Composition, A&S 30....	3	6	M-Th	McVH	211	
*T1c ₅	English Composition, A&S 30....	3	6	M-Th	McVH		
*T1c ₆	English Composition, A&S 25, Ed. 5	3	7	M-Th	McVH	211	
*T1c ₇	English Composition, A&S 30....	3	7	M-Th	McVH	230	
Not open to Freshmen:							
3a ₁	History of English Literature..	3	1	M-Th	McVH	206	
3a ₂	History of English Literature..	3	2	M-Th	McVH	206	
3b	History of English Literature..	3	1	M-Th	McVH	207	
3c	History of English Literature..	3	2	M-Th	McVH	231	
C32	Voice Development	4	6	M-F			Briggs
C33	Expressive Reading	4	7	M-F			Briggs
Courses open only to Upper Division and Graduate Students:							
102	History of the English Language	5	2	M-S	McVH	207	Cutler
C116	The Contemporary Drama	4	1	M-F	McVH	230	Farquhar
C123a	American Literature before 1830	4	1	M-F	McVH	200	Knight
C124	The Renaissance	4	4	M-F	McVH		Stoakes
C147	Age of Johnson	4	3	M-F	McVH	207	Cooke
C153	The Drama of the Restoration and Eighteenth Century	4	4	M-F	McVH	207	Cooke
160	Theory and Technique of Acting	4	6	M-F			Fowler
C172	Writing the One-Act Play.....	4	7	M-F			Fowler
Courses open only to Graduate Students:							
C201a	Literary Criticism	4	3	M-F	McVH	230	Farquhar
Full Quarter Courses							
*1a ₁	English Composition, Engr. 30..	3	8:25-9:15	MWF	McVH		
			{ 11:15- }				
*1a ₂	English Composition, Engr. 30..	3	{ 12:05 }	MWF	McVH		
*1a ₃	English Composition, Engr. 30..	3	1:00-1:50	MWF	McVH		
*1a ₄	English Composition, Engr. 30..	3	2:00-2:50	MWF	McVH		
*1a ₅	English Composition, Engr. 30..	3	3:00-3:50	MWF	McVH		
*1b ₁	English Composition, Engr. 30..	3	7:25-8:15	MWF	McVH	210	
*1b ₂	English Composition, Engr. 30..	3	8:25-9:15	MWF	McVH	210	
*1b ₃	English Composition, Engr. 30..	3	8:25-9:15	TThS	McVH	231	
*1b ₄	English Composition, Engr. 30..	3	2:00-2:50	MWF	McVH	231	
*1b ₅	English Composition, Engr. 30..	3	3:00-3:50	MWF			
*1c ₁	English Composition, Engr. 30..	3	7:50-8:15	MWF	McVH		

* Open to Freshmen.

FIRST TERM—SUMMER 1947
COLLEGE OF ARTS AND SCIENCES—Continued

Course No.	Subject	Qtr. Hrs.	Hour	Days	Building	Room No.	Instructor
ENGLISH—Cont.							
*1c ₂	English Composition, Engr. 30..	3	8:25-9:15	MWF	McVH		
*1c ₃	English Composition, Engr. 30..	3	{ 9:50- }	TThS			
*1c ₄	English Composition, Engr. 30..	3	{ 10:40 }				
*1c ₅	English Composition, Engr. 30..	3	{ 11:15- }	MWF	McVH	231	
30 ₁	English Composition, Engr. 30..	3	{ 12:05 }				
30 ₂	English Composition, Engr. 30..	3	2:00-2:50	MWF	McVH	231	
30 ₁	Not open to Freshmen: Business English, Engr. 30.....	3	{ 9:50- }	MWF	McVH	231	
30 ₂	Business English, Engr. 30.....	3	{ 10:40 }				
30 ₂	Business English, Engr. 30.....	3	1:00-1:50	MWF			
GEOGRAPHY							

J. R. Schwendeman, Head of Department, Biological Science, 320.

UPPER DIVISION REQUIREMENTS—Junior and Senior Years

Requirements in the Field of Concentration: Sixty quarter hours of advanced work in the field of Social Studies and certain closely allied Physical Science fields.

Requirements for a Major. Prerequisites: Geography 1a, 3a-b; 10-12; 20-22. A minimum of 24 hours of advanced work is required of which 16 hours will be in regional geography. The 8 additional hours may be four hours in Cartography and four hours of field study and report. This latter selection will be especially for those planning graduate or professional work in Geography.

LOWER DIVISION REQUIREMENTS—See Page 18.

*1	Elements of Geography	4	6	M-F	BS	224	Hutter
*2	Regional Geography of the World	4	1	M-F	BS	224	Schwendeman
*3a†	Societies Around the World.....	5	2	M-S	BS	200	Schwendeman
*3b†	Societies Around the World.....	5	6	M-S	BS	200	Tuthill
*10 ₁	Economic Geography	4	4	M-F	BS	224	Tuthill
Courses open only to Upper Division and Graduate Students:							
101	Geography of North America....	4	3	M-F	BS	224	Hutter
102	Regional Geography of Latin America	4	5	M-F	BS	224	Schwendeman
Full Quarter Course							
*10 ₂	Economic Geography	4	2	M-Th	BS	224	Tuthill
GEOLOGY							

A. C. McFarlan, Head of Department, Miller Hall, 209.

UPPER DIVISION REQUIREMENTS—Junior and Senior Years

Requirements in the Field of Concentration: Sixty quarter hours in the field of Physical and Biological Science, including the major work, in courses not open to freshmen.

Requirements for a Major: Geology 10a, b, c; 30a, b, c; 31a, b; 101a, b, c; 106a, b; 107a, b, c; 123a, b; 118a or 118b; and 124a, b, c. **Field Work:** An early summer field trip, Geology 118a-d, is required of major students for graduation. This covers five weeks' work in selected regions. Local field work is offered throughout the year.

† Geog. 3a is prerequisite to 3b.

* Open to Freshmen.

FIRST TERM—SUMMER 1947
COLLEGE OF ARTS AND SCIENCES—Continued

Course No.	Subject	Qtr. Hrs.	Hour	Days	Building	Room No.	Instructor
GEOLOGY—Cont.							
Students majoring in Geology are required to pass a final comprehensive examination in the department.							
LOWER DIVISION REQUIREMENTS—See Page 18.							
*23a, b	El. Field Work in Regional Geology	6	{ June 16–July 22 } Field Camp, Pulaski, Va.				McFarlan and Nelson
118a-d	Field Work in Regional Geology	6	{ June 16–July 22 } Field Camp, Pulaski, Va.				McFarlan and Nelson
*50a ₁	Outlines of Geology	3	2	M–Th	MH	203	MacQuown
*3 ₁	Elementary Geology	4	2	M–F	MH	203	MacQuown
*50a ₂	Outlines of Geology	3	3	M–Th	MH	108	Hamilton
*3 ₂	Elementary Geology	4	3	M–F	MH	108	Hamilton
*50b	Outlines of Geology	3	4	M–Th	MH	108	Hamilton
*50c	Outlines of Geology	3	3	M–Th	MH	203	MacQuown
*14a	Elementary Field Geology	1	5–7	T	MH	203	MacQuown
GERMAN LANGUAGE AND LITERATURE							

A. E. Bigge, Head of Department, Miller Hall, 303A.

UPPER DIVISION REQUIREMENTS—Junior and Senior Years

Requirements in the Field of Concentration: Sixty quarter hours in the field of Literature, Philosophy, and the Arts, including the major work, in courses not open to freshmen.

Requirements for a Major. Prerequisites: Junior standing; 1a, 1b, 2a, 2b, **Required:** A minimum of 27 quarter hours of advanced work, independent of tutorial courses. Major students are required to enroll in tutorial courses, giving one hour credit for each of two quarters in the junior year, and two hours in the senior year, and to pass a comprehensive examination.

Note.—No credit is given when work done in high school is repeated. One year of high school language is considered the equivalent of one quarter of university language study. No credit will be given for German 1a until German 1b has been completed. No student should enroll in two beginning language courses at the same time. A proficiency examination must be passed as in any foreign language.

LOWER DIVISION REQUIREMENTS—See Page 18.

2b ₁	Intermediate German (Prereq. 2a; Pre-Med., Med., Tech., and Bact. Maj.)	4	2	M–F	MH	310	
2b ₂	Intermediate German (Prereq. 2a; Ind. Chem. and Chem. Maj.)	4	3	M–F	MH	310	
2b ₃	Intermediate German (Prereq. 2a; Literary Section)	4	4	M–F	MH	310	
3b	Selected German (Prereq. 3a, 2b or approval of German Dept.)	4		By Appt.	MH	303a	
10b	German Conversation and Composition (Prereq. 10a or by approval of Dept.)	3		By Appt.	MH	303a	

* Open to Freshmen.

FIRST TERM—SUMMER 1947
COLLEGE OF ARTS AND SCIENCES—Continued

Course No.	Subject	Qtr. Hrs.	Hour	Days	Building	Room No.	Instructor
	GERMAN LANGUAGE AND LITERATURE—Cont.						
	Courses open only to Upper Division and Graduate Students:						
101b	19th Century Literature (Prereq. 3b or approval of Dept.)	3	By Appt.		MH	314a	
105a-f	Independent Work in German	4	By Appt.		MH	303a	
106b	Scientific German (Prereq. 2b)	3	By Appt.		MH	314a	
	Full Quarter Courses						
*1a ₁	Elementary German	5	8:00-8:50	M-F	MH	302	
*1a ₂	Elementary German	5	9:00-9:50	M-F	MH	302	
*1b	Elem. German. (Prereq. 1a)	5	{ 10:00- } } 10:50 {	M-F	MH	302	
	HISTORY						

Thomas D. Clark, Head of Department, Frazee Hall, 203.

UPPER DIVISION REQUIREMENTS—Junior and Senior Years

Requirements in the Field of Concentration: Sixty quarter hours of advanced work in the field of Social Studies. During the junior and senior years, including the major work.

Requirements for a Major. Prerequisites: History 8-10 qtr. hrs. **Required:** A minimum of 27 quarter hours of advanced courses in History. Should include the Senior Seminar.

LOWER DIVISION REQUIREMENTS—See Page 18.

*C4b ₁	Mod. Europe since the Fr. Rev.	4	2	M-F	FH	204	Lunde
*C4b ₂	Mod. Europe since the Fr. Rev.	4	4	M-F	FH	204	Carson
*C8a ₁	Eu. Civil. to 1815	4	1	M-F	FH	204	McCloy
*C8a ₂	Eu. Civil. to 1815	4	3	M-F	FH	201	
*Cab ₁	Eu. Civil. since 1815	4	1	M-F	FH	201	Carson
*C8b ₂	Eu. Civil. since 1815	4	3	M-F	FH	201	
*C10a ₁	Am. Civil., 1607-1865	4	2	M-F	FH	201	Hopkins
*C10a ₂	Am. Civil., 1607-1865	5	3	M-S	FH	301	England
*C10a ₃	Am. Civil., 1607-1865	4	4	M-F	FH	201	Kirwan
*C10a ₄	Am. Civil., 1607-1865	4	1	M-F	FH	302	Cotterill
*C10b ₁	Am. Civil. since 1865	4	1	M-F	FH	202	Wall
*C10b ₂	Am. Civil. since 1865	4	5	M-F	FH	201	Eaton
40	History of Kentucky	4	2	M-F	FH	202	Wall
	Courses open only to Upper Division and Graduate Students:						
100a	The Dip. and For. Pol. of the U. S. to 1898	4	4	M-F	FH	202	Hopkins
C106a	Colonial Latin America	4	3	M-F	FH	202	Cotterill
C179	Modern Europe	4	5	M-F	FH	204	Lunde
124a	Social and Cultural History of the United States to 1830	4	2	M-F	FH	301	Robert
180a	History of the Old South	4	4	M-F	FH	301	Eaton

* Open to Freshmen.

FIRST TERM—SUMMER 1947

COLLEGE OF ARTS AND SCIENCES—Continued

Course No.	Subject	Qtr. Hrs.	Hour	Days	Building	Room No.	Instructor
HISTORY—Cont.							
Open only to Graduate Students:							
C280	European Historiography	4	6, 7	MWF	FH	202	McCloy
C247a	Seminar in United States History	4	6, 7, 8	TTh	FH	202	Robert
Full Quarter Courses							
30 ₁	Rise of the American Nationality since 1607 to the Present (For Engineers not open, etc.)	5	8:25-9:15	M-F	FH	302	Taylor
30 ₂	Rise of the American Nationality since 1607 to the Present (For Engineers not open, etc.)	5	{ 9:50- 10:40 }		FH	302	Taylor
30 ₃	Rise of the American Nationality since 1607 to the Present (For Engineers not open, etc.)	5	{ 11:15- 12:05 }		FH	302	Taylor
HOME ECONOMICS							

A student in the College of Arts and Sciences may elect toward the A.B. or B.S. degree a total of 45 quarter hours from other colleges of the University.

HYGIENE AND PUBLIC HEALTH

J. S. Chambers, Head of Department, Health Bldg., 105.

UPPER DIVISION REQUIREMENTS—Junior and Senior Years

Requirements in the Field of Concentration: Sixty quarter hours in the field of Biological Sciences and Social Studies (Sociology, Social Work, Psychology, Political Science), including the major work, in the courses not open to freshmen.

Requirements for a Major. Prerequisites: 18 quarter hours in the Biological Sciences. **Required:** A minimum of 22 quarter hours of advanced work in Hygiene and Public Health.

LOWER DIVISION REQUIREMENTS—See Page 18.

*9	Hygiene for Teachers	3	3	MTThF	BS	125	Heinz
Courses open only to Upper Division and Graduate Students:							
C100b	Public Health	3	2	T-F	BS	125	Chambers
C110	Health Education	3	4	T-F	BS	125	Heinz
111a-d	Independent Work in Hygiene and Public Health	4 each		By Appt.	HB	104	Heinz

JOURNALISM

Niel Plummer, Head of Department, McVey Hall, 55.

UPPER DIVISION REQUIREMENTS—Junior and Senior Years

Requirements in Field of Concentration: Sixty quarter hours in courses not open to freshmen, including the major work, in either the field of Social Studies or that of Literature, Philosophy, and the Arts, during junior and senior years.

* Open to Freshmen.

FIRST TERM—SUMMER 1947
COLLEGE OF ARTS AND SCIENCES—Continued

Course No.	Subject	Qtr. Hrs.	Hour	Days	Building	Room No.	Instructor
JOURNALISM—Cont.							
<p>Requirements for a Major. Prerequisite: Journalism 2, 21, and 22. Required: Journalism 100a, 100b, 101a, 101b, 105, 106, 107, 108, 109a, 109b, 123a, 123b, and 127. Comprehensive examination.</p> <p>The degree of A.B. in Journalism. Four sequences leading to the degree of a A.B. in Journalism are outlined in the general catalog.</p>							
LOWER DIVISION REQUIREMENTS—See Page 18.							
*2	Introduction to Journalism	3	3	MTThF	McVH	53	Plummer
10a	Survey of Journalism	4	3	M-F	McVH	54	McLaughlin
22	Principles of News Writing	4	4	M-F	McVH	66	Tucker
Courses open only to Upper Division and Graduate Students:							
112	Critical Writing for the Press..	4	4	M-F	McVH	54	McLaughlin
Full Quarter Courses							
21	Etymology	4	1-1:50	{MW } {ThF }	{McVH }	53	Tucker
101a	Copyreading	3	{ 3 2, 3	M WF	{McVH }	66	Plummer
127	Reporting Public Affairs	3	4	MWF	McVH	53	Plummer
LAW							

A student in the College of Arts and Sciences may elect toward the A.B. degree a total of 45 quarter hours from other colleges of the University. However election of law courses is restricted. For the combined Arts-Law course see University catalog.

LIBRARY SCIENCE

Robert H. Deily, Head of Department, University Library, 313.

UPPER DIVISION REQUIREMENTS—**Junior and Senior Years**

Requirements in the Field of Concentration: Sixty quarter hours of advanced work in the field of Literature, Philosophy and the Arts (or acceptable equivalent), including the major, during the junior and senior years.

Requirements for a Major. Junior and senior standing. **Required:** The professional curriculum of 45 quarter hours. With the approval of the Head of the Department a student may substitute one course outside the Library Science Department, e.g., Education 186, Visual Teaching, for one of the electives.

LOWER DIVISION REQUIREMENTS—See Page 18.

*25	Use of the Library	2	3	MWF	UL	314	Deily
Open only to Upper Division and Graduate Students:							
†101a-d	Independent Work	1		By Appt.	UL	313	Deily
114	The College and University Library	3	6	M-F	UL	314	Deily
Prereq.: L. S. 121, 129a, 133a, 152a							
121	Introduction to Library Work..	3	4	M-F	UL	314	Wofford
128	Children's Literature	3	5	M-F	UL	314	Martin

† This course 101a-d (Independent Work) will be given as the demand for it justifies.

*Open to Freshmen.

FIRST TERM—SUMMER 1947
COLLEGE OF ARTS AND SCIENCES—Continued

Course No.	Subject	Qtr. Hrs.	Hour	Days	Building	Room No.	Instructor
LIBRARY SCIENCE—Cont.							
129a	Cataloging and Classification.....	4	2	M-S	UL	314	Wofford
152a	Book Selection	4	3	M-S	UL	314	Martin
MATHEMATICS AND ASTRONOMY							

Paul P. Boyd, Head of Department, McVey, 120 or Administration, 109.

UPPER DIVISION REQUIREMENTS—Junior and Senior Years

Requirements in the Field of Concentration: Sixty quarter hours of advanced work in the field of Physical Sciences during the junior and senior years, including the major work.

Courses open only to Upper Division and Graduate Students:							
16a-f	Tutorial Work in Math.	1 each		By Appt.	McVH		Staff
103	Theory of Equations	4		By Appt.	McVH	128	Downing
107	Projective Geometry	4		By Appt.	McVH	100	Pence
110a-f	Independent Work in Math....	4 each		By Appt.	McVH		Staff
Open only to Graduate Students:							
211	Higher Algebra	4		By Appt.	McVH	106	Latimer
Full Quarter							
*C2 ₁	Solid Geometry	3	{ 11:15- } 12:05	{ TThS	McVH		Heath
*C2 ₂	Solid Geometry	3	{ 11:15- } 12:05	{ MWF	McVH		Heath
*C2 ₃	Solid Geometry	3	4:00-4:50	MWF	McVH	100	Heath
*3 ₁	Plane Trigonometry, Engr. and Others	5	7:25-8:15	M-F	McVH	{107	Brown
*3 ₂	Plane Trigonometry, Engr.	5	8:25-9:15	M-F	McVH	{106	Hayes
*3 ₃	Plane Trigonometry, Engr. and Others	5	{ 11:15- } 12:05	{ M-F	McVH	128	Foster
*3 ₄	Plane Trigonometry, Engr.	5	2:00-2:50	M-F	McVH	{.....	Royster
*3 ₅	Plane Trigonometry, Engr. and Others	5	3:00-3:50	M-F	McVH	{107	Dyer
*3 ₆	Plane Trigonometry, I. C. and Others	5	1:00-1:50	M-F	McVH	{106	Dyer
*5a ₁	College Algebra, Engr.	4	{ 11:15- } 12:05	{ MTThF	McVH	{107	Jasper
*5a ₂	College Algebra, Engr. and I. C.	4	{ 11:15- } 12:05	{ MTThF	McVH	{106	Hayes
*5a ₃	College Algebra, Engr. and Others	4	1:00-1:50	MTThF	McVH	129	Foster
*5a ₄	College Algebra, Engr.	4	2:00-2:50	MTThF	McVH	106	Rohde
*5b ₁	College Algebra, Engr. and Others	4	8:25-9:15	MTThF	McVH	{106	Rohde
*5b ₂	College Algebra, Engr.	4	{ 11:15- } 12:05	{ MTThF	McVH	{100	Yearley
*5b ₃	College Algebra, Engr. and Others	4	3:00-3:50	MTThF	McVH	{128	Foster
						{106	Rohde

* Open to Freshmen.

FIRST TERM—SUMMER 1947
COLLEGE OF ARTS AND SCIENCES—Continued

Course No.	Subject	Qtr. Hrs.	Hour	Days	Building	Room No.	Instructor
	MATH. AND ASTRON.—Cont.						
*5b ₄	College Algebra, I. C. and Others	4	1:00-1:50	MTThF	McVH		Royster
*15	Mathematics of Finance, Com.	4	{ 9:50- } 10:40	MTThF	McVH	109	Fields
*17 ₁	College Algebra, Engr. 15, Others 15	5	8:25-9:15	M-F	McVH	107	Jasper
*17 ₂	College Algebra, Engr. 15, I. C. 15	5	{ 11:15- } 12:05	M-F	McVH	104	Riggs
*17 ₃	College Algebra, Engr. 15, Others 15	5	2:00-2:50	M-F	McVH	104	Baskett, Lane
*17 ₄	College Algebra, Engr. 15, Others 15	5	4:00-4:50	M-F	McVH	128	Dyer, Lane
*17 ₅	College Algebra, Com. 15, Others	5	{ 9:50- } 10:40	M-F	McVH	107	Dyer
*19 ₁	Pl. and Sol. Anal. Geometry, Engr.	5	7:25-8:15	M-F	McVH	128	Tiller
*19 ₂	Plane and Solid Analytic Geometry, Engr. and I. C.	5	8:25-9:15	M-F	McVH	103	Foster
*19 ₃	Plane and Solid Analytic Geometry, Engr.	5	8:25-9:15	M-F	McVH	109	Atkins
*19 ₄	Plane and Solid Analytic Geometry, Engr. and Others..	5	{ 11:15- } 12:05	M-F	McVH	109	Atkins
*19 ₅	Plane and Solid Analytic Geometry, Engr. and Others..	5	{ 11:15- } 12:05	M-F	McVH		Rohde
*19 ₆	Plane and Solid Analytic Geometry, Engr.	5	1:00-1:50	M-F	McVH	104	Riggs
*19 ₇	Plane and Solid Analytic Geometry, Engr.	5	2:00-2:50	M-F	McVH	128	Tiller
*19 ₈	Plane and Solid Analytic Geometry	5	3:00-3:50	M-F	McVH	107	Jasper
*19 ₉	Plane and Solid Analytic Geometry, Engr. and Others..	5	4:00-4:50	M-F	McVH	129	Baskett, Dyer
20a ₁	Diff. Calculus, Engr. & Others	5	7:25-8:15	M-F	McVH	{ 103 } 100	Goffman Yeardley
20a ₂	Diff. Calculus, Engr. & Others	5	7:25-8:15	M-F	McVH	{ 129 } 100	South Royster
20a ₃	Diff. Calculus, Engr. & Others	5	8:25-9:15	M-F	McVH	{ 128 } 128	Tiller Downing
20a ₄	Diff. Calculus, Engr. & Others	5	8:25-9:15	M-F	McVH	104	Riggs
20a ₅	Diff. Calculus, Engr. & Others	5	{ 9:50- } 10:40	M-F	McVH	{ 100 } 104	Pence Tiller
20a ₆	Diff. Calculus, Engr. & Others	5	{ 9:50- } 10:40	M-F	McVH	{ 103 } 106	Goffman Wood
20a ₇	Diff. Calculus, Engr. and I. C.	5	{ 11:15- } 12:05	M-F	McVH	129	South, Yeardley
20a ₈	Diff. Calculus, Engr. & Others	5	{ 11:15- } 12:05	M-F	McVH	100	Fields
20b ₁	Int. Calculus, Engr.	5	{ 11:50- } 12:05	M-F	McVH	{ 106 } 109	Latimer Goffman
20b ₂	Int. Calculus, Engr. and I. C.	5	1:00-1:50	M-F	McVH	128	Downing
20b ₃	Int. Calculus, Engr. and Others	5	1:00-1:50	M-F	McVH	107	Brown
20b ₄	Int. Calculus, Engr. and Others	5	2:00-2:50	M-F	McVH	{ 103 } 100	Goffman Jasper

* Open to Freshmen.

FIRST TERM—SUMMER 1947
COLLEGE OF ARTS AND SCIENCES—Continued

Course No.	Subject	Qtr. Hrs.	Hour	Days	Building	Room No.	Instructor
	MATH. AND ASTRON.—Cont.						
20b ₅	Int. Calculus, Engr. and Others	5	2:00-2:50	M-F	McVH	107	Brown
C35 ₁	Diff. Equations	3	1:00-1:50	MWF	McVH	100	Pence
						109	Goffman
C35 ₂	Diff. Equations	3	{ 9:50- 10:40 }	MWF	McVH	129	South
	Courses open only to Upper Division and Graduate Students:					128	Downing
C105a ₁	Diff. Equations	3	1:00-1:50	MWF	McVH	100	Pence
						109	Goffman
C105a ₂	Diff. Equations	3	{ 9:50- 10:40 }	MWF	McVH	129	South
						128	Downing
	MUSIC						

Alexander Capurso, Head of Department, McVey, 4th Floor.

UPPER DIVISION REQUIREMENTS—Junior and Senior Years

Requirements in Field of Concentration: Sixty quarter hours of advanced work in the field of Literature, Philosophy, and the Arts during junior and senior years including the major work.

Requirements for a Major. Prerequisite: Junior standing; Music A; 12a, b; 33a, b, c; Applied Music 18 quarter hours. **Required:** A minimum of 22 quarter hours of advanced work in Applied Music and music courses 19a, b; 34a, b, c; and 114a or 115 (depending upon instrumental or choral major). Other courses, such as Music 4a, b; 7, 8, 9; 13a, b; or 26 may be elected. Music 42 and a comprehensive examination are required of all music majors in the senior year. All music majors are required to take part in either the Orchestra or Glee Club for which participation they receive credit in junior and senior years.

Fees for Applied Music: All Applied Music (piano, voice, organ, instrumental) require a fee of \$15 for one half-hour lesson per week. Practice room fee is \$4 per term, additionally. Organ practice fees are: \$12 per quarter for five hours a week practice; \$24 a quarter for 10 hours a week practice. Organ practice may be arranged for on a quarterly basis only, not by the hour. Rental of instrument for use in Music 7, 8, 9 is \$2.50 per quarter per course.

Note.—Enrollment fee for non-University students (in addition to above fees), \$10 per quarter.

All fees payable within thirty days after registration.

A ₁	An Introduction to the Humanities Through the Study of Music (For both Music Majors and non-Music Majors)	3	5	M-Th	AC	19	Prindl
A ₂	An Introduction to the Humanities Through the Study of Music (For both Music Majors and non-Music Majors)	3	2	M-Th	AC	19	Lewis
*4a	Public School Music (For both Music Majors and non-Music Majors)	3	5	M-Th	AC	17	Lewis

Note.—Admittance to Glee Club is by the director. No credit for Music Majors until Junior-Senior years.

* Open to Freshmen.

FIRST TERM—SUMMER 1947
COLLEGE OF ARTS AND SCIENCES—Continued

Course No.	Subject	Qtr. Hrs.	Hour	Days	Building	Room No.	Instructor
MUSIC—Cont.							
*4b	Public School Music (For both Music Majors and non-Music Majors)	3	3	M-Th	AC	17	Lewis
*12a	Counterpoint	3	3	M-Th	AC	19	
*20a	Survey of Musical Literature	3	4	M-Th	AC	18	Capurso
22a, b, c	Band (Freshmen)	2	4:00-5:00 p.m.	M-W	AC	9	Prindl
23a, b, c	Band (Sophomore)	2	4:00-5:00 p.m.	M-W	AC	9	Prindl
*39a-L	Glee Club (Men and Women)	1	6	MW	AC	19	Lewis
Applied Music							
*15a-L	Applied Music—Piano	2	By Appt.	†	}	3	Morgan
						1	Cullis
*C15a-L	Applied Music—Piano	1	By Appt.	†	}	3	Morgan
						1	Cullis
*16a-L	Applied Music—Strings	2	By Appt.		AC	7	
*C16a-L	Applied Music—Strings	1	By Appt.		AC	7	
						9	Prindl
*17a-L	Applied Music—Voice	2	By Appt.	‡		1	Kiviniemi
*C17a-L	Applied Music—Voice	1	By Appt.	‡		1	Kiviniemi
*18a-L	Applied Music—Organ	2	By Appt.		MeH Aud		Cullis
*C18a-L	Applied Music—Organ	1	By Appt.		MeH Aud		Cullis
*31a-L	Applied Music—Woodwin Instrs.	2	By Appt.		AC	9	Prindl
*C31a-L	Applied Music—Woodwin Instrs.	1	By Appt.		AC	9	Prindl
*32a-L	Applied Music—Brass and Percussion Instrs.	2	By Appt.		AC	9	Prindl
*C32a-L	Applied Music—Brass and Percussion Instrs.	1	By Appt.		AC	9	Prindl
Courses open only to Upper Division and Graduate Students:							
28a, b, c	Concert Band (Juniors)	2	4:00-5:00 p.m.	M-W	AC	9	Prindl
29a, b, c	Concert Band (Seniors)	2	4:00-5:00 p.m.	M-W	AC	9	
34a	Advanced Harmony, Sight-singing and Dictation	4	2	M-F	AC	19	
114a	Orchestration	3	3	M-Th	AC	18	Capurso
Courses open only to Graduate Students:							
208a-d	Seminar in Music	1	5, 6	Th	AC	18	Capurso
215a, b, c	Applied Music—Piano	2	By Appt.	†		3	Morgan
216a, b, c	Applied Music—Strings	2	By Appt.		AC	7	
217a, b, c	Applied Music—Voice	2	By Appt.	‡		1	Kiviniemi

* Open to Freshmen.

† 628 S. Lime.

‡ 624 S. Lime.

FIRST TERM—SUMMER 1947
COLLEGE OF ARTS AND SCIENCES—Continued

Course No.	Subject	Qtr. Hrs.	Hour	Days	Building	Room No.	Instructor
------------	---------	-----------	------	------	----------	----------	------------

PHILOSOPHY

John Kuiper, Head of Department, Frazee Hall, 103.

UPPER DIVISION REQUIREMENTS—Junior and Senior Years

Requirements in Field of Concentration: Sixty quarter hours in courses not open to freshmen, which may be elected in either (1) the Field of Literature, Philosophy, and the Arts, or (2) the Field of Social Science.

Requirements for a Major. Prerequisite: 8 quarter hours in Philosophy. **Required:** A minimum of 22 quarter hours in Philosophy; Philosophy 35a-c; and a comprehensive examination in the senior year.

LOWER DIVISION REQUIREMENTS—See Page 18.

*A	An Introduction to the Humanities Through the Study of Philosophy	3	6	M-Th	FH	205	De Boer
31	Logic (Elementary)	4	2	M-F	FH	205	Kuiper
	Courses open only to Upper Division and Graduate Students:						
101b	History of Philosophy (Modern)	4	4	M-F	FH	205	Kuiper
118	The Philosophy of Plato.....	4	3	M-F	FH	205	De Boer
	Courses open only to Graduate Students:						
201a	Seminar in Phil.	2		By Appt.	FH	205	Staff

PHYSICAL EDUCATION

William E. McCubbin, Acting Head of Department, Alumni Gymnasium

UPPER DIVISION REQUIREMENTS—Junior and Senior Years

Requirements in Field of Concentration: Sixty quarter hours of advanced work in the field of Biological Sciences, including the major work.

Requirements for a Major. Prerequisites: Zoology 1a, 1b and 1c or 25; for Men, Physical Education 30, 31, 33, 34, and 35; for Women, Physical Education 30, 31, 32, 36, 37, and 38. **Required:** 123, 125, 120a and b (for women, 115), 60a, b, c. Anatomy and Physiology 4 and 5 and Hygiene 7. Minimum on Major 22 credits. Comprehensive examination senior year. For teacher requirements check with the College of Education.

LOWER DIVISION REQUIREMENTS—See Page 18.

*C30	Calisthenics, Apparatus and Tumbling (Men)	4	1, 2	D	MG		Johnson
*37	Basketball and Volleyball Coaching Fundamentals for Women	3	1, 2	M-F	WG		Shaw
42	Physical Education in the Elementary Schools	5	3	D	FH		
	Courses open only to Upper Division and Graduate Students:						
120b	Kinesiology	3	1	M-Th	FH		Hackensmith
123	History and Principles of Physical Education	5	3	D	FH		McCubbin
149	Administration of Physical Education and Athletics	4	4	M-F	FH		Lancaster
151	Organization of Intramural Sports	3	4	M-Th	FH		McCubbin

* Open to Freshmen.

FIRST TERM—SUMMER 1947
COLLEGE OF ARTS AND SCIENCES—Continued

Course No.	Subject	Qtr. Hrs.	Hour	Days	Building	Room No.	Instructor
	PHYSICAL EDUCA.—Cont.						
	Open only to Graduate Students:						
C200	Graduate Seminar in P. E.....	4	6	M-F	FH		Lancaster
201a	Research in Physical Education	4	2	M-F	FH		Hackensmith
	Full Quarter Courses For Men and Women:						

Required Physical Education will be scheduled for each student by reporting to the Physical Education Department.

Course No.	Subject	Qtr. Hrs.	Hour	Days	Building	Room No.	Instructor
	Elective and Professional Courses:						
*11 ₁	Tennis (Women)	1	4	MWF	WG		Shaw
*11 ₂	Tennis (Men)	1	4	MWF	MG		Johnson
*14	Volleyball (Men)	1	5	MWF	MG		Johnson
*19	Folk Dancing (Men & Women)	1	7	MWF	WG		Shaw
*20	Badminton (Women)	1	6	T			
			6, 7	Th	WG		
*22	Bowling (Men and Women).....	1	6	MWF	MG		Shaw
*27	Modern Dance (Women)	1					Johnson
*29	Advanced Modern Dance		6	MWF	WG		Shaw
	(Women)	1	3	MWF	WG		Shaw
	PHYSICS						

W. S. Webb, Head of the Department, Pence Hall, 101.

UPPER DIVISION REQUIREMENTS—Junior and Senior Years

Requirements in the Field of Concentration: Sixty quarter hours of advanced work in the field of Physical Sciences, including the major work.

Requirements for a Major. Prerequisites: Physics 3a, 3b, 3c; Mathematics 17, 3, and 19. **Required:** Mathematics 20a, 20b; Physics 125c, and a minimum of 22 quarter hours of advanced work in Physics; and a comprehensive examination in the senior year.

LOWER DIVISION REQUIREMENTS—See Page 18.

7a	Gen. Elem. Phys.	7	1, 2	D	PENCE	201	Webb
	Full Quarter Courses						
3a ₁	Gen. Col. Phys., Lec. and Rec.	6	7:25-8:15	TThFS	PENCE	205	Staff
3a ₁₁	Gen. Col. Phys., Lab.						
3a ₂	Gen. Col. Phys., Lec. and Rec.	6	7:25-8:15	MWFS	PENCE	206	Staff
3a ₂₁	Gen. Col. Phys., Lab.						
3a ₃	Gen. Col. Phys., Lec. and Rec.	6	7:25-8:15	MTWTh	PENCE	208	Staff
3a ₃₁	Gen. Col. Phys., Lab.						
3a ₄	Gen. Col. Phys., Lec. and Rec.	6	11:15-12:05	TThFS	PENCE	205	Staff
3a ₄₁	Gen. Col. Phys., Lab.						

* Open to Freshmen.

FIRST TERM—SUMMER 1947
COLLEGE OF ARTS AND SCIENCES—Continued

Course No.	Subject	Qtr. Hrs.	Hour	Days	Building	Room No.	Instructor
PHYSICS—Cont.							
Full Quarter Courses—Cont.							
3a ₅	Gen. Col. Phys., Lec. and Rec.	6	{ 11:15- 12:05	MWFS	PENCE	206	Staff
3a ₅₁	Gen. Col. Phys., Lab.		{ 10:15- 12:05				
3a ₆	Gen. Col. Phys., Lec. and Rec.	6	{ 11:15- 12:05	{ MT WTh }	PENCE	208	Staff
3a ₆₁	Gen. Col. Phys., Lab.		{ 10:15- 12:05				
3a ₇	Gen. Col. Phys., Lec. and Rec.	6	{ 1-1:50 1-2:50	TF Th	PENCE	208	Staff
3a ₇₁	Gen. Col. Phys., Lab.		{ 1-2:50 1-2:50				
3a ₈	Gen. Col. Phys., Lec. and Rec.	6	{ 1-1:50 1-2:50	MF W	PENCE	206	Staff
3a ₈₁	Gen. Col. Phys., Lab.		{ 1-2:50 1-2:50				
3b ₁	Gen. Col. Phys., Lec. and Rec.	6	{ 8:25- 9:15	TThFS	PENCE	205	Staff
3b ₁₁	Gen. Col. Phys., Lab.		{ 7:25- 9:15				
3b ₂	Gen. Col. Phys., Lec. and Rec.	6	{ 8:25- 9:15	MWFS	PENCE	206	Staff
3b ₂₁	Gen. Col. Phys., Lab.		{ 7:25- 9:15				
3b ₃	Gen. Col. Phys., Lec. and Rec.	6	{ 9:50- 10:40	{ MT WTh }	PENCE	205	Staff
3b ₃₁	Gen. Col. Phys., Lab.		{ 9:50- 11:40				
3b ₄	Gen. Col. Phys., Lec. and Rec.	6	{ 9:50- 10:40	TThFS	PENCE	206	Staff
3b ₄₁	Gen. Col. Phys., Lab.		{ 9:50- 11:40				
3b ₅	Gen. Col. Phys., Lec. and Rec.	6	{ 9:50- 10:40	MWFS	PENCE	208	Staff
3b ₅₁	Gen. Col. Phys., Lab.		{ 9:50- 11:40				
3c ₁	Gen. Col. Phys., Lec. and Rec.	6	{ 7:25- 8:15	TThFS	PENCE	103	Staff
3c ₁₁	Gen. Col. Phys., Lab.		{ 7:25- 9:15				
3c ₃	Gen. Col. Phys., Lec. and Rec.	6	{ 7:25- 8:15	MWFS	PENCE	309	Staff
3c ₃₁	Gen. Col. Phys., Lab.		{ 7:25- 9:15				
3c ₃	Gen. Col. Phys., Lec. and Rec.	6	{ 7:25- 8:15	{ MT WTh }	PENCE	303	Staff
3c ₃₁	Gen. Col. Phys., Lab.		{ 7:25- 9:15				
3c ₄	Gen. Col. Phys., Lec. and Rec.	6	{ 11:15- 12:05	TThFS	PENCE	303	Staff
3c ₄₁	Gen. Col. Phys., Lab.		{ 10:15- 12:05				
3c ₅	Gen. Col. Phys., Lec. and Rec.	6	{ 11:15- 12:05	MWFS	PENCE	309	Staff
3c ₅₁	Gen. Col. Phys., Lab.		{ 10:15- 12:05				

* Open to Freshmen.

FIRST TERM—SUMMER 1947
COLLEGE OF ARTS AND SCIENCES—Continued

Course No.	Subject	Qtr. Hrs.	Hour	Days	Building	Room No.	Instructor
PHYSICS—Cont.							
Full Quarter Courses							
Courses open only to Upper Division and Graduate Students:							
111	Electricity and Magnetism	5		By Appt.			Crawley
120	X-Ray Technique	3		By Appt.			Crawley
155	Fundamental Atomic and Nuclear Physics	5		By Appt.			Pardue
Full Quarter Courses							
Courses open only to Graduate Students:							
227a	Research in Physics	6		By Appt.			Crawley
227b	Research in Physics	6		By Appt.			Pardue

Note.—Other advanced or graduate courses will be given if the need for them arises.

POLITICAL SCIENCE

Amry Vandebosch, Head of Department, Administration Bldg., 202.

UPPER DIVISION REQUIREMENTS—Junior and Senior Years

Requirements in the Field of Concentration: Sixty quarter hours credits of advanced work in the field of Social Studies, during the junior and senior years, including the major work.

Requirements for a Major. Prerequisites: Political Science or History 10a and 10b. **Required:** At least one course in each of four fields of Political Science, including one course in Constitutional Development and one in Political Theory; Political Science 190; minimum of twenty-four quarter hours of advanced work in Political Science; and a comprehensive examination in the senior year.

LOWER DIVISION REQUIREMENTS—See Page 18.

*C8b	European Civilization Since 1815	4	7	M-F	A	301	Stout
*C10a ₁	American Civilization 1607-1865	4	6	M-F	A	301	Povlovich
*C10b ₁	American Civilization Since 1865	4	4	M-F	A	302	Edelmann
*C10b ₂	American Civilization Since 1865	4	5	M-F	A	302	Stout
*C51 ₁	American Government	4	5	M-F	A	301	Trimble
*C51 ₂	American Government	4	3	M-F	A	301	Povlovich
*C51 ₃	American Government	4	4	M-F	A	203	Vanlandingham
C80	State Government	4	5	M-F	A	203	Vanlandingham
Courses open only to Upper Division and Graduate Students:							
C159a	American Constitutional Development	4	3	M-F	A	302	Trimble
C160	American Foreign Relations.....	4	1	M-F	A	203	Vandebosch

* Open to Freshmen.

FIRST TERM—SUMMER 1947
COLLEGE OF ARTS AND SCIENCES—Continued

Course No.	Subject	Qtr. Hrs.	Hour	Days	Building	Room No.	Instructor
	POLITICAL SCIENCE—Cont.						
C165	World Politics	4	2	M-F	A	302	Edelman
C172	Kentucky Government and Constitution	2†	7	M-F	A	203	Staff and others
C177a	Principles of Public Administration	4	2	M-F	A	203	Kammerer
C180a-d	Independent Work	4	By	Appt.			Staff
	Courses open only to Graduate Students:						
C217	Contemporary American Diplomatic Problems	4	2	M-F	A	202 ^b	Vandenbosch
	Full Quarter Courses						
*15 ₁	Problems of Citizenship	5	7:25-8:15	M-F	A	302	
*15 ₂	Problems of Citizenship	5	8:25-9:15	M-F	A	301	
*15 ₃	Problems of Citizenship	5	{ 9:50- 10:40 }	M-F	A	301	
51	American Government	5	{ 11:15- 12:10 }	M-F	A	301	
	PSYCHOLOGY						

Head of Department, Neville Hall, 106.

UPPER DIVISION REQUIREMENTS—Junior and Senior Years

Requirements for a Major. Prerequisites: A minimum of 10 quarter hours in Psychology, including Psychology 1 and 8, or their equivalent. **Required:** The student may choose as his field of concentration either the Biological or the Social Science group of subjects. In either case 22 of the 60 quarter hours in the field must be courses in Psychology not open to freshmen.

LOWER DIVISION REQUIREMENTS—See Page 18.

*2	Applied Psychology. Prereq.: Psychology 1	4	3	M-F	NH	112	Mellenbruch
*6	Personality. Prereq.: Psy. 1	4	5	M-F	NH	112	Newbury
7	Psychology of the Child. Prereq.: Psychology 1	4	1	T-F	Agr	4	Humphreys
8	Individual Differences. Prereq.: Psychology 1	4	4	M-F	NH	112	Newbury
	Courses open only to Upper Division and Graduate Students:						
101	Practice in Testing: Intelligence Tests. Prereq.: Psy. 8	3	1, 2	MWF	NH	112	Mellenbruch
113	Psychology of Learning. Prereq.: Psychology 1	3	{ 6 2 hrs. By Appt.	MW	NH	112	Calvin
121	Student Personnel	4	2	M-F	NH	112	Croft
124	Mental Hygiene. Prereq.: Psy. 1	4	2	M-F	E		
	Full Quarter Courses						
*1 ₁	Introduction to Psychology, Lec.	6	7:25-8:15	MWF			
*1 ₂	Introduction to Psychology, Lec.	6	8:25-9:15	MWF			Humphreys

† A series of special lectures on the Constitution and government of Kentucky. The course will run during the first two weeks of the First Term.

* Open to Freshmen.

FIRST TERM—SUMMER 1947
COLLEGE OF ARTS AND SCIENCES—Continued

Course No.	Subject	Qtr. Hrs.	Hour	Days	Building	Room No.	Instructor
PSYCHOLOGY—Cont.							
*1 ₃	Intoduction to Psychology, Rec. (15 Engr.)		7:25-8:15	MWF	NH	205	Calvin
*1 ₄	Intoduction to Psychology, Rec.		7:25-8:15	MWF	NH	206	Henry
*1 ₅	Intoduction to Psychology, Rec. (15 Engr.)		8:25-9:15	MWF	NH	205	Calvin
*1 ₆	Intoduction to Psychology, Rec.		8:25-9:15	MWF	NH	206	
*1 ₇	Intoduction to Psychology, Rec. (15 Engr.)		{ 9:50- } } 10:40	{ MWF	NH	205	
*1 ₈	Intoduction to Psychology, Rec.		{ 9:50- } } 10:40	{ MWF	NH	206	
*1 ₉	Intoduction to Psychology, Rec. (15 Engr.)		{ 11:15- } } 12:05	{ MWF	NH	205	Humphreys
*1 ₁₀	Intoduction to Psychology, Rec.		{ 11:15- } } 12:05	{ MWF	NH	206	
*1 ₁₁	Intoduction to Psychology, Rec. (15 Engr.)		1:30-2:20	MWF	NH	205	
*1 ₁₂	Intoduction to Psychology, Rec.		1:30-2:20	MWF	NH	206	
*1 ₁₃	Intoduction to Psychology, Rec. (15 Engr.)		7:25-8:15	TThS	NH	205	
*1 ₁₄	Intoduction to Psychology, Rec.		7:25-8:15	TThS	NH	206	Henry
*1 ₁₅	Intoduction to Psychology, Rec.		8:25-9:15	TThS	NH	205	
*1 ₁₆	Intoduction to Psychology, Rec.		8:25-9:15	TThS	NH	206	
*1 ₁₇	Intoduction to Psychology, Rec.		{ 9:50- } } 10:40	{ TThS	NH	205	
*1 ₁₈	Intoduction to Psychology, Rec.		{ 9:50- } } 10:40	{ TThS	NH	206	Dimmick
Courses open only to Graduate Students:							
219	Clinical Psychology	5	1, 2	TThS	NH	202	Dimmick
238	The Rorschach Test. Prereq.: Psy. 219	6	1, 2	MWF	NH	202	Dimmick
203a-h	Problems in Psychology	3		By Appt.	NH	106	Staff
210a-h	Research in Psychology	5		By Appt.	NH	106	Staff
431d	Special Field Practicum	6		By Appt.	NH	106	Dimmick

RADIO ARTS

Elmer G. Sulzer, Head of Department, Radio Studios, top floor, McVey Hall.

2a	Radio Announcing	3	4	{ MT } { WTh }	McVH Rad.		L. Robinson
	No prerequisites to 2a. Not open to freshmen.						

ROMANCE LANGUAGES

Hobart Ryland, Head of Department, Miller Hall, 301.

UPPER DIVISION REQUIREMENTS—Junior and Senior Years

Requirements in Field of Concentration: Sixty quarter hours of advanced work in the field of Literature, Philosophy, and the Arts during the junior and senior years, including the major work.

* Open to Freshmen.

FIRST TERM—SUMMER 1947
COLLEGE OF ARTS AND SCIENCES—Continued

Course No.	Subject	Qtr. Hrs.	Hour	Days	Building	Room No.	Instructor
ROMANCE LANGS.—Cont.							
<p>Requirements for a Major. Prerequisites: Junior standing; in French R. L. 1a-b, 2a-b, 4a-b or 5a-b, 3a-b or 8a-b; in Spanish: R. L. 1a-b or 4a-b, 5a-b, 7a-b, 10a-b-c. Required: A minimum of 22 quarter hours of advanced work in Romance Languages: R. L. 80a, b, c. Comprehensive examination in senior year.</p>							
<p>LOWER DIVISION REQUIREMENTS—See Page 18.</p>							
<p>Note.—No credit for duplicating work done in high school. Each year of high school language study is considered the equivalent of one quarter of University language study. Example: If a student has had two years of French in high school, he should take R. L. 2a. No credit for first quarter of a beginning language until second quarter is completed.</p>							
2a	Intermediate French	4	1	M-F	MH	308	
2b	Intermediate French	4	5	M-F	MH	308	
7a	Intermediate Spanish	4	3	M-F	MH	308	
7b	Intermediate Spanish	4	1	M-F	MH	306b	Keller
3a	French Conversation & Comp. 3	3	3	M-Th	MH	301	Ryland
3b	French Conversation & Comp. 3	3	3	M-Th	MH	301	Ryland
6a, b, c	French Novel and Drama..... 4	4	4	M-F	MH	308	Niess
9a, b, c	Spanish Novel and Drama 4	4	2	M-F	MH	308	Keller
Courses open only to Upper Division and Graduate Students:							
109b	Fr. Lit., XIX Cent. 3	4	M-Th	MH	306b	Ryland	
112b	Sp. Lit., XIX Cent. 3	2	M-Th	MH	306b	Server	
115b	Fr. Lit., XVIII Cent. 3	3	M-Th	MH	306b	Niess	
114a-h	Independent Work 3		By Appt.			Staff	
Full Quarter Courses							
*A	An Introduction to the Humanities Through the Study of Romance Literatures	3	1:30-2:20	MWF	MH	307	Ryland
*1a ₁	Elementary French	5	7:25-8:15	M-F	MH	307	Schick
*1a ₂	Elementary French	5	{ 9:50- } 10:40 {	M-F	MH	307	Schick
*1b ₁	Elementary French	5	8:25-9:15	M-F	MH	307	Schick
*1b ₂	Elementary French	5	{ 11:15- } 12:05 {	M-F	MH	307	
*5a ₁	Elementary Spanish	5	8:25-9:15	M-F	MH	309	
*5a ₂	Elementary Spanish	5	{ 11:15- } 12:05 {	M-F	MH	309	Server
*5b ₁	Elementary Spanish	5	7:25-8:15	M-F	MH	309	
*5b ₂	Elementary Spanish	5	{ 9:50- } 10:40 {	M-F	MH	309	Server

SOCIAL WORK

H. E. Wetzel, Head of Department, McVey Hall, 314.

UPPER DIVISION REQUIREMENTS—Junior and Senior Years

Requirements in the Field of Concentration: Sixty quarter hours of advanced work in the field of Social Studies during the junior and senior years, including the major work.

Requirements for a Major: A basic minimum of twenty-two hours in social work including 116, 122, 124, 130a, plus additional courses depending on the

* Open to Freshmen.

FIRST TERM—SUMMER 1947
COLLEGE OF ARTS AND SCIENCES—Continued

Course No.	Subject	Qtr. Hrs.	Hour	Days	Building	Room No.	Instructor
------------	---------	-----------	------	------	----------	----------	------------

SOCIAL WORK—Cont.

students area of specialization including specific courses in Sociology, Psychology, Hygiene, and Rural Sociology.

Tutorial and comprehensive examination in the senior year.

LOWER DIVISION REQUIREMENTS—See Page 18.

	Courses open only to Upper Division and Graduate Students:						
116	Social Investigation	4	3	M-F	McVH	326	Wetzel
122	Fields of Social Work	4	4	M-F	McVH	326	Rucker
C130a	Community Organization for Soc. Welfare	3	2	M-Th	McVH	326	Rucker
C144	Field Participation in Group Work Programs (for group work majors only)	2	(To be arranged)		McVH	326	Rucker
C127a	Tutorial Work in Social Work..	2	(To be arranged)		McVH	326	Wetzel

SOCIOLOGY

Irwin T. Sanders, Head of Department, Frazee Hall, 102.

UPPER DIVISION REQUIREMENTS—Junior and Senior Years

Requirements in the Field of Concentration: Sixty quarter hours of advanced work in the field of Social Studies, during the junior and senior years, including the major work.

Prerequisite for a Major: Sociology 3a, 3b, or Sociology 1 and one of the following: 2, 7, 18. **Required:** A minimum of 22 quarter hours of advanced work in Sociology, including at least 8 quarter hours in Theory and Methodology, 8 quarter hours in one of the other subdivisions of the field, and Sociology 19a, b, c, and 20a, b, c. Comprehensive examination in senior year.

LOWER DIVISION REQUIREMENTS—See Page 18.

*C1	Introductory Sociology	4	1	M-F	FH	106	Best
*3a	Societies Around the World	4	2	M-F	FH	105	Hatch
*C3b	Societies Around the World	4	3	M-F	FH	105	Sanders
	(Soc. 3a, b same as Geog. 3a b.)						
*C2	Modern Social Problems	4	1	M-F	FH	105	Holmes
	Courses open only to Upper Division and Graduate Students:						
103	Criminology	4	2	M-F	FH	106	Best
109	The Family	4	4	M-F	FH	105	Hatch
114a-c	Independent Work in Soc.	3	3	M-Th	FH	102	Sanders
	Courses open only to Graduate Students:						
201c	Sociology Seminar	2	5	M-W	FH	102	Sanders

ZOOLOGY

W. D. Funkhouser, Head of Department, Biological Sciences Bldg., 14.

UPPER DIVISION REQUIREMENTS—Junior and Senior Years

Requirements in the Field of Concentration: Sixty quarter hours of advanced work in the field of Biological Sciences, during the junior and senior years, including the major.

* Open to Freshmen.

FIRST TERM—SUMMER 1947
COLLEGE OF ARTS AND SCIENCES—Continued

Course No.	Subject	Qtr. Hrs.	Hour	Days	Building	Room No.	Instructor
ZOOLOGY—Cont.							
<p>Requirements for a Major. Prerequisites: Junior standing; Zoology 1a, 1b, 1c. Required: Zoology 7a, b, c, or 157a, b, c; Zoology 106; Zoology 108a, b; Zoology 114a, b, c; a minimum of twenty-two quarter hours work above 1a, b, c, passing a comprehensive examination before graduation.</p>							
<p>LOWER DIVISION REQUIREMENTS—See Page 18.</p>							
*1a ₁	General Zoology, Lec.....	4	3	M-F	BS	B8	Allen
*1a ₂	General Zoology, Lab.						
*25 ₁	General Animal Biology, Rec.	5	1	M-F	BS	200	Muller
*25 ₂	General Animal Biology, Lab.						
Open only to Upper Division and Graduate Students:							
101a ₁	Histology, Lec.	4	2, 3	S	BS	125	Brauer
101a ₂	Histology, Lab.						
108b	Prin. of Zoology (Heredity)....	3	4	M-Th	BS	200	Funkhouser
Open only to Graduate Students:							
110a-f	Independent Work	4		By Appt.			Staff
210a-d	Research in Zoology	4		By Appt.			Staff
Full Quarter Courses							
Open only to Upper Division and Graduate Students:							
105 ₁	Parasitology, Lec.	5	1	MWF	BS	3	Lincicome
105 ₂	Parasitology, Lab.						
115	Advanced Parasitology	4		By Appt.			Lincicome
Open only to Graduate Students:							
210a-c	Problems in Zoology	4		By Appt.			Staff

* Open to Freshmen.

FIRST TERM—SUMMER 1947
COLLEGE OF AGRICULTURE AND HOME ECONOMICS

Thomas Poe Cooper, Dean
 Levi Jackson Horlacher, Assistant Dean

Course No.	Subject	Qtr. Hrs.	Hour	Days	Building	Room No.	Instructor
AGRICULTURAL ENTOMOLOGY							
*104	Economic Entomology: Farm Crop Insects and Animal Parasites	4	3	M-F	Agr	1	Townsend
AGRONOMY							
11	Market Grain Grading and Grain Judging	3	5, 6	MThF	Agr	304	Phillippe
12	Soil Conservation	3	5, 6	MT	Agr	301	
*102	Development in the Agronomic Field (July 7 to 24)	4	3, 3	D	Agr	301	Fergus, Karraker, Kinney, Valteau
*104	Advanced Crops: Forage Crops	4	1	M-F	Agr	301	Phillippe
†204a, b, c	Special Problems in Production of Forage Crops	3		By Appt.	Agr	301	Fergus
ANIMAL INDUSTRY							
1 ₁	Farm Livestock Production, Lec.	5	2	M-Th	SP	101	Johnson
1 ₂	Farm Livestock Production, Lab.		3	M-Th			Johnson
1 ₃	Farm Livestock Production, Lab.		4	M-Th			Johnson
41	Farm Poultry Production	4	3	D	SP	101	Wightman
61	Genetics	4	3	M-F	D	109	Steele
62	Genetics Laboratory	1	7	MW	D		Steele
*141	Adv. Poultry Production	5	1, 2	M-F	SP	106	Wightman
*161	Genetics	4	3	MF	D	109	Steele
*162	Genetics Laboratory	1	7	MW	D		Steele
ANIMAL PATHOLOGY							
*102	Infectious Diseases of Domestic Animals	4	4	M-F	AP	201	Dimock
FARM ECONOMICS							
†202a	Economics of Production as Applied to Agriculture	3	6	M-Th	Agr	4	McComas
FARM ENGINEERING							
3	Farm Structural Engineering....	3	2, 3	T-F	AE	201	Young
*101a-d	Special Problems	4	5, 6, 7	M-F	AE	106	Young
	(Prereq.: F. E. 1 and permission of instructor.) (July 7 to 24)						

* Courses open only to Upper Division and Graduate Students.

† Courses open only to Graduate Students.

FIRST TERM—SUMMER 1947

COLLEGE OF AGRICULTURE AND HOME ECONOMICS—Continued

Course No.	Subject	Qtr. Hrs.	Hour	Days	Building	Room No.	Instructor
HORTICULTURE							
*120	Landscape Gardening June 16-July 3)	4	2-6	M-F	Agr	202	Elliott
MARKETS AND RURAL FINANCE							
*100	Marketing	4	4	M-F	Agr	4	Brown
HOME ECONOMICS							
2	Nutrition and Public Health....	3	4	MTThF	HE	105	Erikson
5	Foods	5	5, 6	M-F	HE	200	Barkley
17	Clothing	3	2, 3	MWF	HE	308	Latzke
25	Textiles	3	4	M-Th	HE	302	Sumner
26	Costume Design	4	1, 2	M-F	HE	300	Seeds
61	Housing	4	2	M-F	HE	9	Wilmore
*101	Principles of Nutrition	4	2	M-F	HE	105	Wooldridge
*103a	Public School Nutrition	2	4	MWF	HE	204	Wooldridge
*107	Workshop in Nutrition	5	1	D	HE	105	Erikson
*114	Food Preservation	3	2, 3	M-Th	HE	200	Helton
*129	Interior Decoration	4	3, 4	M-F	HE	300	Seeds
*137	Advanced Clothing Problems	3	By	Appt.	HE	308	Latzke
*140	The School Lunch	3	5	M-F	HE	9	Helton
*155	The Child and His Clothing	3	1	M-Th	HE	9	Bentley
*157	Infant Development	3	5	T-F	HE	105	Mumford
*162a	Home Management and Family Relationships, Lec....	4	3	M-F	HE	105	Wilmore
*162b	Home Management and Family Relationships	5	By	Appt.			Wilmore
†206a	Field Work in Nutrition	1	By	Appt.	HE	204	Wooldridge
Full Quarter Courses							
AGRONOMY							
*112a-d	Special Problems in Soils	3	By	Appt.			Karraker
†204a- b-c	Special Problems in Produc- tion of Forage Crops	3	By	Appt.			Fergus
†212a-d	Research in Soils	3	By	Appt.			Karraker
FARM ECONOMICS							
1	Agricultural Economics	5	1	M-F	Agr	4	Bradford
*110	Farm Management	4	3	M-Th	Agr	4	Bradford
*111	Advanced Farm Management....	3	5	MWF	Agr	4	McComas
†210a, b, c	Research in Farm Economics....	3	By	Appt.			McComas

* Courses open only to Upper Division and Graduate Students.

† Courses open only to Graduate Students.

FIRST TERM—SUMMER 1947
COLLEGE OF ENGINEERING

Daniel Voiers Terrell, Dean

Course No.	Subject	Qtr. Hrs.	Hour	Days	Building	Room No.	Instructor
CIVIL ENGINEERING							
15	General Surveying	5	} Summer Survey- ing Camp, Camp Robinson				} Shaver and others
16b	Route Surveying	4					
17	Hydrographic Surveying	1					
262a	Geodetic Surveying	9					
262b	Geodetic Surveying	9	} Summer Survey- ing Camp, Camp Robinson				} Shaver and others
Full Quarter							
31	Highway Location, Construc- tion and Maintenance	3	8:25-9:15	MWF	Eng	206	Chambers
81 ₁	Testing Materials	2	1:00-5:00	M	Eng	108	Chambers and others
81 ₂	Testing Materials	2	1:00-5:00	T	Eng	108	Chambers and others
81 ₃	Testing Materials	2	1:00-5:00	W	Eng	108	Chambers and others
81 ₄	Testing Materials	2	1:00-5:00	Th	Eng	108	Chambers and others
81 ₅	Testing Materials	2	1:00-5:00	F	Eng	108	Chambers and others
81 ₆	Testing Materials	2	8:00-12	S	Eng	108	Chambers and others
107	Soil Mechanics	5	} 7:25-8:15	MWF	Eng	206	Baker
171b	Theory of Structures	3					
173a	Steel Structures	4	{ 9:50- 10:40	{ MWF	Eng	206	Mory
			{ 1:00-5	{ M			
			{ 1:00-4	{ WF	Eng	216	Mory
ELECTRICAL ENGINEERING							
Full Quarter							
11 ₁	Electrical Laboratory	1	2 hrs. By Appt.				
11 ₂	Electrical Laboratory	1	2 hrs. By Appt.				
11 ₃	Electrical Laboratory	1	2 hrs. By Appt.				
21 ₁	Principles of Elec. Engr., Rec.	6	5 hrs. By Appt.				
21 ₁₁	Principles of Elec. Engr., Lab.		2 hrs. By Appt.				
21 ₁₂	Principles of Elec. Engr., Lab.		2 hrs. By Appt.				
21 ₂	Principles of Elec. Engr., Rec.	6	5 hrs. By Appt.				
21 ₂₁	Principles of Elec. Engr., Lab.		2 hrs. By Appt.				
21 ₂₂	Principles of Elec. Engr., Lab.		2 hrs. By Appt.				
114 ₁	Alternating Current Circuits, Rec.	6	5 hrs. By Appt.				
114 ₁₁	Alternating Current Circuits, Lab.		3 hrs. By Appt.				
114 ₁₂	Alternating Current Circuits, Lab.		3 hrs. By Appt.				
114 ₂	Alternating Current Circuits, Rec.	6	5 hrs. By Appt.				
114 ₂₁	Alternating Current Circuits, Lab.		3 hrs. By Appt.				
114 ₂₂	Alternating Current Circuits, Lab.		3 hrs. By Appt.				

FIRST TERM—SUMMER 1947
COLLEGE OF ENGINEERING—Continued

Course No.	Subject	Qtr. Hrs.	Hour	Days	Building	Room No.	Instructor
ELEC. ENGINEERING—Cont.							
115	Direct Current Machinery, Rec.	4	3 hrs.	By Appt.			
115 ₁₁	Direct Current, Machinery, Lab.		3 hrs.	By Appt.			
116	Alternating Current Machinery	5	7 hrs.	By Appt.			
102	Electrical Machinery	3	3 hrs.	By Appt.			
108	Electronic Controls	4	6 hrs.	By Appt.			
110a	Electrical Laboratory	1	2 hrs.	By Appt.			
110b	Electrical Laboratory	1	2 hrs.	By Appt.			
117	Adv. Alternating Current Mach.	5	5 hrs.	By Appt.			
123	Elec. Equipment Problems	3	9 hrs.	By Appt.			
151a	Seminar	1	2 hrs.	By Appt.			
151b	Seminar	1	2 hrs.	By Appt.			
151c	Seminar	1	2 hrs.	By Appt.			
162	Radio Engineering-Receivers....	4	6 hrs.	By Appt.			
ENGINEERING—GENERAL							
Applied Mechanics							
Full Quarter							
2 ₁	Mechanisms	3	{ 3:00-3:50 3:30-3:50 p.m.	{ TTh W	Eng Eng	201 204	Lawson
2 ₂	Mechanisms	3	{ 3:00-3:50 7:25- 10:15 } a.m.	{ TTh Th	Eng Eng	202 204	Boyd
2 ₃	Mechanisms	3	{ 4:00-4:50 12:10- 2:50 } p.m.	{ TTh F	Eng Eng	201 204	Lawson
2 ₄	Mechanisms	3	{ 4:00-4:50 3:00-5:50 p.m.	{ WF Th	Eng Eng	201 204	Macke
3 ₁	Statics	5	{ 9:50- 10:40 } a.m.	{ M-F	Eng	201	Staff
3 ₂	Statics	5	{ 11:15- 12:05 } p.m.	{ M-F	Eng	201	Staff
3 ₃	Statics	5	1:00-1:50 p.m.	M-F	Eng	202	Staff
3 ₄	Statics	5	1:00-1:50 p.m.	M-F	Eng	201	Staff
3 ₅	Statics	5	2:00-2:50 p.m.	M-F	Eng	202	Staff
3 ₆	Statics	5	2:00-2:50 p.m.	M-F	Eng	201	Staff
4 ₁	Dynamics	3	3:00-3:50 p.m.	MWF	Eng	202	Staff
4 ₂	Dynamics	3	3:00-3:50 p.m.	MWF	Eng	201	Staff
4 ₃	Dynamics	3	5:00-5:50 p.m.	TWF	Eng	202	Staff
4 ₄	Dynamics	3	5:00-5:50 p.m.	TWF	Eng	201	Staff
4 ₅	Dynamics	3	{ 5:00-5:50 4:00-4:50 } p.m.	{ M WF	Eng	202	Staff

FIRST TERM—SUMMER 1947
COLLEGE OF ENGINEERING—Continued

Course No.	Subject	Qtr. Hrs.	Hour	Days	Building	Room No.	Instructor
	ENGINEER'G—GEN.—Cont.						
100 ₁	Strength of Materials	5	7:25-8:15 a.m.	M-F	Eng	201	Staff
100 ₂	Strength of Materials	5	8:25-9:15 a.m.	M-F	Eng	202	Hawkins
100 ₃	Strength of Materials	5	8:25-9:15 a.m.	M-F	Eng	201	Lawson
100 ₄	Strength of Materials	5	{ 9:50- 10:40 } a.m.	{ M-F	Eng	202	Hawkins
100 ₅	Strength of Materials	5	{ 11:15- 12:05 } a.m.	{ M-F	Eng	202	Lawson
106	Advanced Strength of Materials	5	7:25-8:15 a.m.	M-F	Eng	202	Hawkins and Lawson
	Engineering Drawing						
	Full Quarter						
1a	Elem. Engineering Drawing.....	3	{ 7:25-8:15 8:25-9:15 } a.m.	{ M-Th M-F	Eng	216	Nollau and Staff
1b	Descriptive Geometry	3	{ { 9:50- 10:40 } { 10:50- 11:40 } } a.m.	{ M-Th M-F	Eng	216	Nollau and Staff
†12 ₁	Graphical Computations, Lec...	3	8:25-9:15 a.m.	S	Eng	235	Terry
†12 ₂	Graphical Computations, Lec...	3	{ 11:15- 12:05 } a.m.	{ Th	Eng	235	Terry
†12 ₃	Graphical Computations, Lec...	3	1:00-1:50 p.m.	W	Eng	237	Carter
†12 ₄	Graphical Computations, Drafting		{ 12:10- 2:50 } p.m.	{ M	Eng	204	Carter
†12 ₅	Graphical Computations, Drafting		{ 8:25- 11:15 } a.m.	{ T	Eng	204	Terry
†12 ₆	Graphical Computations, Drafting		{ 12:10- 2:50 } p.m.	{ T	Eng	204	Carter
†12 ₇	Graphical Computations, Drafting		3:00-5:50 p.m.	F	Eng	204	Terry
18 ₁	Advanced Engineering Drawing	3	{ 1:00-1:50 2:00-2:50 } p.m.	{ M-F M-Th	Eng	216	Nollau and Staff
18 ₂	Adv. Engineering Drawing	3	{ 3:00-3:50 4:00-4:50 } p.m.	{ M-F M-Th	Eng	216	Nollau and Staff
	Student Assemblies						
2 ₃₁	Engineering Problems	1	{ 9:50- 10:40 } a.m.	{ TTh	Eng	235	Knight
2 ₃₂	Engineering Problems	1	{ 9:50- 10:40 } a.m.	{ TTh	Eng	236	Carter

† Note.—Student must sign one lecture section and two drafting sections.)

FIRST TERM—SUMMER 1947
COLLEGE OF ENGINEERING—Continued

Course No.	Subject	Qtr. Hrs.	Hour	Days	Building	Room No.	Instructor	
	ENGINEER'G—GEN.—Cont.							
2 ₁₁	Engineering Problems	1	{ 9:50— 10:40 } a.m.	TTh	Eng			
2 ₁₂	Engineering Problems	1	{ 9:50— 10:40 } a.m.	TTh	Eng			
	MECHANICAL ENGINEERING							
	Full Quarter							
*15a ₁	Manufacturing Processes (20)..	3	1:00—4:50 p.m.	M	Eng	110c	Meyer and Staff	
*15a ₂	Manufacturing Processes (20)..		1:00—4:50 p.m.	T	Eng	110c		
*15a ₃	Manufacturing Processes (20)..		1:00—4:50 p.m.	W	Eng	110c		
*15a ₄	Manufacturing Processes (20)..		1:00—4:50 p.m.	Th	Eng	110c		
*15a ₅	Manufacturing Processes (20)..		1:00—4:50 p.m.	F	Eng	110c		
*15a ₆	Manufacturing Processes (20)..		8:00—12 a.m.	S	Eng	110c		
*15a ₇	Manufacturing Processes (60)..		3:00—4:50 p.m.	M	Eng	232		
*15a ₈	Manufacturing Processes (60)..		3:00—4:50 p.m.	W	Eng	232		
*15a ₉	Manufacturing Processes (60)..		3:00—4:50 p.m.	F	Eng	232		
*15b ₁	Manufacturing Processes (20)..		1:00—4:50 p.m.	M	Eng	110c		
*15b ₂	Manufacturing Processes (20)..		1:00—4:50 p.m.	T	Eng	110c		
*15b ₃	Manufacturing Processes (20)..		1:00—4:50 p.m.	W	Eng	110c		
*15b ₄	Manufacturing Processes (20)..		1:00—4:50 p.m.	Th	Eng	110c		
*15b ₅	Manufacturing Processes (20)..		1:00—4:50 p.m.	F	Eng	110c		
*15b ₆	Manufacturing Processes (20)..		8:00—12	S	Eng	110c		
*15b ₇	Manufacturing Processes (60)..		3:00—4:50 p.m.	M	Eng	232		
*15b ₈	Manufacturing Processes (60)..		3:00—4:50 p.m.	W	Eng	232		
*15b ₉	Manufacturing Processes (60)..		3:00—4:50 p.m.	F	Eng	232		
100a ₁	Machine Design	4	{ 7:25—8:15 a.m.	TTh	Eng	235		Carter
100a ₁₁	Machine Design		{ 8:00— 11:00 } 3:00—5:50 p.m.	{ S T	Eng Eng	204 204		Carter

(*Note.—Student must sign for one 4-hr. section and one 2-hr. section.)

FIRST TERM—SUMMER 1947
COLLEGE OF ENGINEERING—Continued

Course No.	Subject	Qtr. Hrs.	Hour	Days	Building	Room No.	Instructor
	MECH .ENGINEERING—Cont.						
100b ₁	Machine Design	4	{ 8:25-9:15 a.m.	TTh	Eng	235	Carter
100b ₁₁	Machine Design		{ 3:00-5:50 p.m.	MT	Eng	204	Carter
104a ₁	Engineering Thermodynamics ..	3	7:25-8:15 a.m.	MWF	Eng	235	Terry
104a ₂	Engineering Thermodynamics ..	3	{ 9:50- 10:40 } a.m.	MWF	Eng	237	Terry
104b	Engineering Thermodynamics ..	3	8:25-9:15 a.m.	MWF	Eng	236	Carter
104c	Engineering Thermodynamics ..	3	7:25-8:15 a.m.	MWF	Eng	237	Knight
112a ₁	Mechanical Laboratory	2	1:00-4:50 p.m.	Th	Eng	131a	Stewart
112a ₂	Mechanical Laboratory	2	1:00-4:50 p.m.	T	Eng	131a	Stewart
112b ₁	Mechanical Laboratory	2	1:00-4:50 p.m.	W	Eng	131a	Terry
112b ₂	Mechanical Laboratory	2	1:00-4:50 p.m.	F	Eng	131a	Carter
113a	Mechanical Laboratory	2	8:00-12	S	Eng	131a	Knight
113b	Mechanical Laboratory	2	1:00-4:50 p.m.	M	Eng	131a	Terry
114a	Air Cond., Heating and Vent.....	5	8:25-9:15 a.m.	M-F	Eng	237	Knight
114b ₁	Air Cond., Heating and Vent. (Design, Lec.)	4	{ {11:15- 12:05 } 12:10- }	MF	Eng	236	Knight
114b ₁₁	Air Cond., Heating and Vent. (Design, Drafting)		{ 2:50 } p.m.	WTh	Eng	204	Knight
122b	Seminar	1	2:00-3:50 p.m.	Th	Eng	234	Penrod
129	Elements of Heat Transfer	4	{ 9:50- 10:40 } a.m.	MWFS	Eng	235	Penrod
130a	Applied Aerodynamics	3	7:25-8:15 a.m.	MWF	Eng	234	Savage
130b	Applied Aerodynamics	3	{ 9:50- 10:40 } a.m.	MWF	Eng	236	Savage
131a	Airplane Design	3	7:25-8:15 a.m.	TThS	Eng	237	Savage
131b	Airplane Design	3	8:25-9:15 a.m.	MWF	Eng	235	Savage
131c	Airplane Design	3	8:25-9:15 a.m.	TThS	Eng	236	Savage
132	Aerodynamics Laboratory	3	{ 11:15- 12:05 } a.m.	MWF	Eng		Savage
	MINING AND METALLURGI- CAL ENGINEERING						
	Metallurgical Engineering						
	Full Quarter						
121	Fuel and Metallurgical Laboratory	2	6 hrs. By Appt.		Eng		Crouse

FIRST TERM—SUMMER 1947
COLLEGE OF ENGINEERING—Continued

Course No.	Subject	Qtr. Hrs.	Hour	Days	Building	Room No.	Instructor
	MINING AND METALLURGICAL ENGINEERING—Cont.						
128	Metallurgy of Non-Ferrous Metals	4	8:25-9:15 a.m.	M-Th	Eng	237	Gerhard
140	The Science of Metals	4	{ 9:50- } { 10:40 } a.m.	M-Th	Eng	237	Gerhard
216c	The Physical Chemistry of Steel Making	4					6 hrs. By Appt.
	Mining Engineering						
	First Term						
160	Mine Surveying and Field Practice in Mining Engineering.....	10	{ Summer Surveying Camp, Camp Robinson				Carter

FIRST TERM—SUMMER 1947

COLLEGE OF LAW

Alvin E. Evans, Dean

Course No.	Subject	Qtr. Hrs.	Hour	Days	Building	Room No.	Instructor
FIRST YEAR							
C106a	Pleading I	2	8:00-8:50	{MT } {WTh }	L	100	Randall
*C107a	Criminal Law						
	1st term	4	{ 11:00- } { 11:50 }	{WTh } {FS }	L	100	Moreland
	2nd term		{ 11:00- } { 11:50 }	{WTh } {FS }	L	100	Moreland
SECOND AND THIRD YEARS							
*C122	Property III						
	1st term	4	{ 8:00- } { 8:50 }	{MT } {WTh }	L	212	Staff
	2nd term		{ 8:00- } { 8:50 }	{MT } {WTh }	L	212	Staff
*123 ₁	Negotiable Instruments						
	1st term	4	{ 8:00- } { 8:50 }	{WTh } {FS }	L	212	Staff
	2nd term		{ 11:00- } { 11:50 }	{MT } {FS }	L	212	Staff
*123 ₂	Negotiable Instruments						
	1st term	4	{ 10:00- } { 10:50 }	{WTh } {FS }	L	212	Staff
	2nd term		{ 10:00- } { 10:50 }	{WTh } {FS }	L	212	Staff
*C145	Insurance						
	1st term	4	{ 11:00- } { 11:50 }	{WTh } {FS }	L	212	Staff
	2nd term		{ 11:00- } { 11:50 }	{WTh } {FS }	L	212	Staff
*150	Public Utilities						
	1st term	4	{ 10:00- } { 10:50 }	{WTh } {FS }	L	100	Moreland
	2nd term		{ 10:00- } { 10:50 }	{WTh } {FS }	L	100	Moreland
*163 ₁	Wills and the Administration of Estates						
	1st term	4	{ 9:00- } { 9:50 }	{MT } {WTh }	L	212	Staff
	2nd term		{ 9:00- } { 9:50 }	{MT } {WTh }	L	212	Staff
*163 ₂	Wills and the Administration of Estates						
	1st term	4	9:00-9:50 { 10:00- }	FS {MT }	L	212	Staff
	2nd term		9:00-9:50 { 10:00- }	FS {MT }	L	212	Staff
C170	Legal Ethics	2	8:00-8:50 { 11:00- }	FS {MT }	L	100	Staff
174	Credit Transactions (Suretyship)	2	{ 11:50 } { 2:00- } { 2:50 }	{MT } {MT } {WTh }	L	212	Staff

* Full quarter courses.

FIRST TERM—SUMMER 1947

COLLEGE OF EDUCATION

William S. Taylor, Dean

Course No.	Subject	Qtr. Hrs.	Hour	Days	Building	Room No.	Instructor
A standing of 1.0 is required for admission to any course in the College of Education							
ADMINISTRATION							
101	School Organization	4	1	M-F	E	131	
198	The Administration of Pupil Personnel (June 16-July 5)....	4	2, 3	D	Agr	4	Carty
Courses open only to Graduate Students:							
C202	Local School Administration....	4	4	M-F	E	222	Meece
207	School Building and Equipment	4	1	M-F	E	222	Dunn
210a, b	Independent Work in School Administration	4	By	Appt.	E	232	Meece
225a	Supervision of Instruction	4	7	M-F	E	222	Spain and Cherry
301a, b	Research Problems in Educational Administration	4	By	Appt.	E	232	Meece
321a, b	Research Problems in Higher Education	4	By	Appt.	E	128	Taylor
AGRICULTURAL EDUCATION							
179	Determining Content in Vocational Agriculture (June 16-July 5)	4	By	Appt.	E	226	Hammonds and Wall
Courses open only to Graduate Students:							
280	Method in Teaching Vocational Agriculture (July 7-24)	4	By	Appt.	E	144b	Hammonds and Wall
287a	Advanced Problems in Agricultural Education	5	By	Appt.	E	219	Hammonds, Armstrong, and Tabb
287b	Selecting Teaching Materials (July 7-24)	4	By	Appt.	E	226	Tabb
287c	Adult-Farmer Schools (June 16-July 5)	4	By	Appt.	E	144b	Tabb
287f	Young-Farmer Schools (June 16-July 5)	4	By	Appt.	E	140	Armstrong
289a, b	Research in Agricultural Education	5	By	Appt.	E	219	Hammonds, Armstrong, and Tabb
BUSINESS EDUCATION							
104	Foundations of Business Education in the High School.....	4	1	M-F	WH	102	
158a	Teaching Secretarial Subjects	3	4	MWThF	WH	205	Thomas
158b	Teaching Accounting	3	7	MTThF	WH	103	
184	Teaching Office Appliances	3	6	MTThF	WH	207	Thomas
Courses open only to Graduate Students:							
208a-d	Problems in Business Education	4	By	Appt.	WH	203	Lawrence
257a, b	Seminar in Business Education	1	2:00-3:30	Th	WH	205	Lawrence
259	The Commerce Curriculum	4	3	M-F	WH	102	Lawrence
272a, b	Independent Work in Business Education	4	By	Appt.	WH	203	Lawrence

FIRST TERM—SUMMER 1947
COLLEGE OF EDUCATION—Continued

Course No.	Subject	Qtr. Hrs.	Hour	Days	Building	Room No.	Instructor
CURRICULUM AND INSTRUCTION							
226f	Problems of the School Curriculum (June 16-July 5)	4	3, 4	D	E	144a	Smith
205a	Review of Current Educational Literature	4	2	M-F	E	222	Hartford
226a	Problems of the School Curriculum (Safety Education Workshop) (June 16-July 5)	4	9:00-12	D	E	†	Ginger
227a	Principles of Curriculum Construction	4	6	M-F	E	131	Spain
245	Organization of Audio-Visual Aids (July 7-24)	4	9:00-12	D	E	†	
DISTRIBUTIVE OCCUPATIONS							
112	Determining Teaching Content in Distributive Occupations..	4		By Appt.	E	234	Baker
116	Problems of the Coordinator in Distributive Occupations..	4		By Appt.	E	234	Baker
EDUCATIONAL PSYCHOLOGY							
147	Foundations of Secondary Education	4	4	M-F	E	136	
Courses open only to Graduate Students:							
222	Methodology of Educational Research	4	3	M-F	E	131	Taylor
C223	Educational Statistics	4	2	M-F	E	136	
ELEMENTARY EDUCATION							
20	Industrial Arts for Elementary Grades	3	3, 4	M-Th	E	170	Haines
42	Arithmetic in Elementary Grades	4	3	M-F	E	136	Adams
110	Advanced Industrial Arts	3	1, 2	M-Th	E	170	Haines
*C133	Student Teaching in the Elementary School	9		By Appt.	E	126	Ginger and Critic Tchrs.
C141	Problems in Diagnostic and Remedial Reading	5	2	D	E	144a	Duncan
172	Teaching Reading in the Elementary School	5	2	D	E	144a	Duncan
196	Science in the Elementary School	5	5	D	E	131	Adams
Courses open only to Graduate Students:							
C229	The Elementary Principal	4	4	M-F	E	131	Duncan
HISTORY OF EDUCATION							
Courses open only to Graduate Students:							
219	Great Educators and Their Work	4	3	M-F	E	222	Hartford

* Application should be made in advance in order that prerequisites may be checked.

† Recreation Room.

FIRST TERM—SUMMER 1947
COLLEGE OF EDUCATION—Continued

Course No.	Subject	Qtr. Hrs.	Hour	Days	Building	Room No.	Instructor
HOME ECONOMICS EDUCATION							
165	Adult Education in Home Economics (July 7-24)	4	2, 4	M-F	E	140	
Courses open only to Graduate Students:							
226a-d ₁	Problems of the School Curriculum (Cannery Workshop) (June 16-July 5)	4		By Appt.	Cannery		Sneed
226a, b ₂	Problems of the School Curriculum (Housing Workshop) (June 16-July 5)	4		By Appt.	E Cafe		Parker
263	Current Problems in Home Economics Education (July 7-24)	4	2, 4	M-F	E Cafe		Parker
INDUSTRIAL EDUCATION							
71	Trade Analysis (June 16-July 5)	3	3, 4	D	E	144a	Crumpton
77	Shop Management Problems (July 7-24)	3	3, 4	M-Th	E	144a	Hankins
82	Instruction Material in Industrial Education (June 16-July 5)	3	3, 4	D	E	144a	Hankins
143	Modern Industrial Analysis (July 7-24)	3	2, 3	M-Th	Agr	4	Crumpton
SECONDARY EDUCATION							
105	Fundamentals of Secondary Education	4	6	M-F	E	222	Cherry
C153 ₁	Student Teaching in English....	9		By Appt.	E	107	Anderson
C153 ₂	Student Teaching in English....	9		By Appt.	E	201	Shipman
C154	Student Teaching in Languages	9		By Appt.	E	208	Robinson
C155	Student Teaching in the Sciences	9		By Appt.	E	204	Kemper
C156	Student Teaching in Mathematics	9		By Appt.	E	211	Church
C157 ₁	Student Teaching in the Social Studies	9		By Appt.	E	207	Peck
C157 ₂	Student Teaching in the Social Studies	9		By Appt.	E	201	Shipman
193	Student Teaching in Business Education	9		By Appt.	E	134	Humphreys
Courses open only to Graduate Students:							
214a	The Secondary School	4	2	M-F	E	131	Ligon
248a, b	Independent Work in Secondary Education	4		By Appt.	E	122	Cherry

FIRST TERM—SUMMER 1947

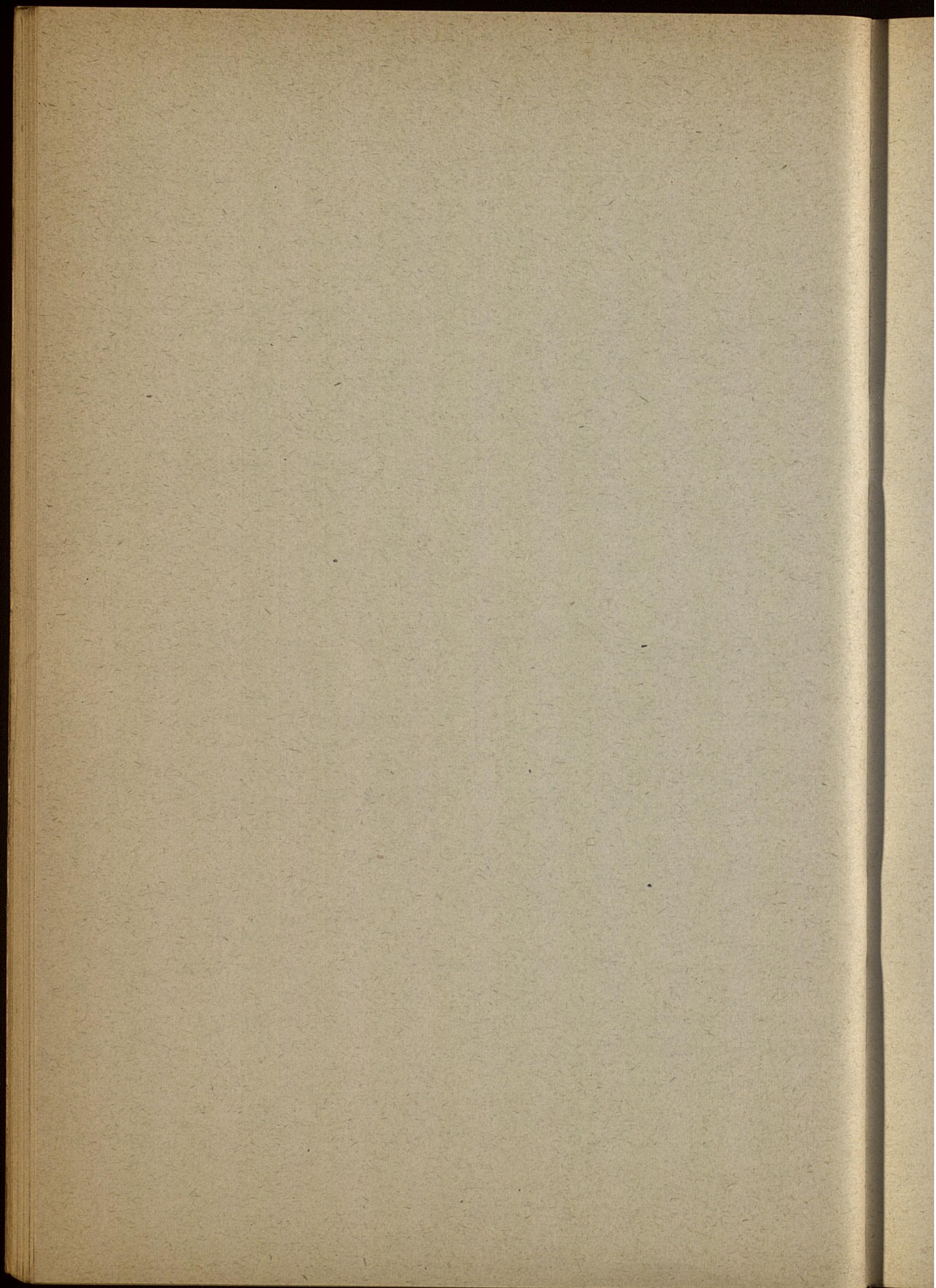
COLLEGE OF COMMERCE

Edward Wiest, Dean

Course No.	Subject	Qtr. Hrs.	Hour	Days	Building	Room No.	Instructor
1 ₁	Principles of Economics	5	1	M-S	WH	303	Massie
1 ₂	Principles of Economics	5	3	M-S	WH	303	Ellis
*2	Economic History of Europe	4	7	M-F	WH	101	Jennings
7a	Principles of Accounting, Rec.	5	1	MWFS	WH	101	Ellis
	Principles of Accounting, Lab.		7, 8	TTh	WH	306	Ellis
*9 ₁	Business Organization	4	2	M-F	WH	303	Tolman
*9 ₂	Business Organization	4	6	M-F	WH	303	Massie
10	Principles of Marketing	5	4	M-S	WH	303	DeVoe
11	Salesmanship	3	7	M-Th	WH	102	McIntyre
†*13a	Secretarial Practice, Shorthand (Prereq. or concurrent: Eng. 1a)	4	2	M-F	WH	101	
*13b	Secretarial Practice, Shorthand	4	3	M-F	WH	101	
14a	Adv. Secretarial Practice	4	2	M-F	WH	301	
14b	Adv. Secretarial Practice	4	3	M-F	WH	301	Thomas
*17a	Secretarial Practice, Type- writing	3	1	MTWF	WH	301	
	(Prereq. or concurrent: Eng. 1a)						
*17b	Secretarial Practice, Type- writing	3	4	MTWF	WH	301	
101	Secretarial Office Practice	2		By Appt.			Lawrence
102	Labor Problems	4	2	M-F	WH	102	Carter
	(Prereq.: Econ. 1)						
104	Public Finance	4	4	M-F	WH	101	Martin
	(Prereq.: Econ. 1)						
105	Money and Banking	4	1	M-F	WH	103	Carpenter
	(Prereq.: Econ. 1)						
106a	Intermediate Accounting	4	6	M-F	WH	101	Beals
	(Prereq.: Com. 7a and 7b)						
109a	Business Law	4	7	M-F	WH	303	Haun
110	Business Cycles	4	3	M-F	WH	103	Carpenter
	(Prereq.: Econ. 1 and a course in Elem. Statistics)						
111	Advanced Salesmanship	4	7	M-F	WH	102	McIntyre
112a-f	Individual Work in Economics	1 each		By Appt.			Staff
115	Value and Distribution Theory	4	8	M-F	WH	103	Sullivan
117	Corporation Finance	4	2	M-F	WH	103	Pickett
	(Prereq.: Econ. 1 and Com. 7a and 7b)						
119	Retail Merchandising	4	3	M-F	WH	103	McIntyre
	(Prereq.: Econ. 1 and Com. 10)						
133	Income Tax Procedure	4	3	M-F	WH	205	Haun
	(Prereq.: Com. 106a and b)						
143	Life Insurance	4	8	M-F	WH	101	Pickett
	(Prereq.: Econ. 1)						
156	Business Reports	3	2	MTWF	WH	105	Lawrence
202a-f	Seminar	1 each		By Appt.			Wiest
212a-f	Research Problems in Economics	1 each		By Appt.			Staff

* Open to Freshmen.

† No credit for 13a until 13b is completed.



SECOND TERM

SECOND TERM—SUMMER 1947
COLLEGE OF ARTS AND SCIENCES

Course No.	Subject	Qtr. Hrs.	Hour	Days	Building	Room No.	Instructor
	ANATOMY and PHYSIOLOGY						
	For Upper Division Requirements, see First Term.						
1b	General Physiology	4	2	M-F	BS	313	Archdeacon
	Courses open only to Upper Division and Graduate Students:						
104a-d	Independent Work in Physiology	4	By	Appt.	BS	303	Wiedeman
C105	Architecture of the Human Skeleton	4	3	M-F	BS	307	Allen
108b ₁	Advanced Physiology, Lec., Rec.	4	4 5, 6	M-W	BS	313	Archdeacon
108b ₂	Advanced Physiology, Lab.	4		ThF	BS	307	Wiedeman
	Courses open only to Graduate Students:						
201a-d	Research in Physiology	6	By Appt.	M-S	BS	304a 305a	Allen Archdeacon
	ANCIENT LANGUAGES						
	For Upper Division Requirements, see First Term.						
*C1a, b	Beginning Latin (1st or 2nd half)	4	1	M-F	A	303	Jones
*C2, 3	Caesar and Sel., Cicero & Sel.						
*C4a, b	Vergil						
*C5	Livy	4	2	M-F	A	303	Jones
*C6a, b	Horace						
*C51a, b	Beginning Greek (1st or 2nd half)						
	Courses open only to Upper Division and Graduate Students:						
C122a, b	Greek Literature in English Translation (Epic and Lyric or Drama, History, Oratory, Philosophy) (Does not count as foreign language requirements)	4	3	M-F	A	303	Jones
C150a, b	Teacher's Course in Latin (Based on 1st and 2nd year work)	4	By Appt.	M-F	A	303	Jones
C151a-d	Independent Work in Ancient Languages	4	By Appt.	M-F	A	303	Jones
	ART						
	For Upper Division Requirements, see First Term.						
*A	An Introduction to the Humanities Through the Study of Art	3	4	M-F	BS	211	Callihan

Note.—No credit given when work in high school is repeated. One year of high school language is considered the equivalent of one quarter of university work. Two courses at same hour not allowed. No credit given in A. L. 1a until A. L. 1b has been completed.

* Open to Freshmen.

SECOND TERM—SUMMER 1947
COLLEGE OF ARTS AND SCIENCES—Continued

Course No.	Subject	Qtr. Hrs.	Hour	Days	Building	Room No.	Instructor
ART—Cont.							
10b	Public School Art	3	3, 4	M—Th	E	170	Haines
*61b	Elementary Drawing	4	6, 7	MWF	BS	213	Barnhart
C64a, b	Intermediate Design	3	(and 8 clock-hrs. by Appt.) 6, 7	TTh	BS	214	
C66a, b	Design in Decoration	3	(and 7 clock-hrs. by Appt.) 6, 7	TTh	BS	214	Callihan
65a, b, c	Painting	4	(and 7 clock-hrs. by Appt.) 6, 7	TTh	BS	316	Barnhart
C65a, b, c	Painting	3	(and 11 clock-hrs. by Appt.) 6, 7	TTh	BS	316	Barnhart
C165a, b, c	Advanced Painting	3	(and 7 clock-hrs. by Appt.) 6, 7	TTh	BS	316	Barnhart
119a-c	Independent Work: Design; Construction	4	(and 7 clock-hrs. by Appt.) By Appt.				Staff
BACTERIOLOGY							
For Upper Division Requirements, see First Term.							
*2b ₁	Elementary Microbiology, Lec.}	6	{By Appt.	M—S	BS	124	Weaver
*2b ₂	Elementary Microbiology, Lab.}		{By Appt.	M—S	BS	208	Muedeking
57a ₁ , b ₁	Bact. of Water and Sewage, Lec.	4, 2	{ 9:50— 10:40 }	M—S	BS	124	Weaver
57a ₂ , b ₂	Bact. of Water and Sewage, Lab.		{ 10:40— 12:30 }	M—S	BS	207	Muedeking
Courses open only to Upper Division and Graduate Students:							
102 ₁	General Bacteriology, Lec.}	6	{ 8:50—9:40	M—S	BS	124	Edwards
102 ₂	General Bacteriology, Lab.}		{ 7:00—8:50	M—S	BS	210	Edwards
104	Applied Bacteriology, Lab.}	3	{ By Appt.	M—S	BS	207	Hotchkiss
110c	Laboratory Diagnosis, Lab.}	3	{ 10—11:50	M—S	BS	206	Hotchkiss
115a-f	Independent Work	4	{ By Appt.	M—S	BS	206	Staff
120a, b, c	Hosp. Lab. Prac., Lab.}	6, 4, 5			Hospital		
125a ₁	Immunology and Serology, Lec. (1st half of term)	5	{ 1:00— 2:00 }	M—F	BS	124	Scherago
125a ₂	Immunology and Serology, Lab.		{ 7:00— 10:00 }	M—S	BS	206	Humphries
125b ₁	Immunology and Serology, Lec. (2nd half of term)	3	{ 1:00— 2:00 }	M—F	BS	124	Scherago
125b ₂	Immunology and Serology, Lab.		{ 7:00— 10:00 }	M—S	BS	206	Humphries
Courses open only to Graduate Students:							
201a-f	Research in Bacteriology	5	By Appt.		BS		Staff
207 ₁	Bact. of Water and Sewage, Lec.	6	{ 9:50— 10:40 }	M—S	BS	124	Weaver
207 ₂	Bact. of Water and Sewage, Lab.		{ 10:40— 12:30 }	M—S	BS	207	Humphries

(Note.—All four-quarter-hour courses in Drawing, Painting, or Design will require 20 studio hours per week for full credit for the summer term of five weeks; but they also may be scheduled for limited credit with studio hours reduced in proportion, e. g., 10 studio hours for half-credit.)

*Open to Freshmen.

SECOND TERM—SUMMER 1947
COLLEGE OF ARTS AND SCIENCES—Continued

Course No.	Subject	Qtr. Hrs.	Hour	Days	Building	Room No.	Instructor
BOTANY							
	For Upper Division Requirements, see First Term.						
*1b	General Botany, Lec.	4	5	M-F	NORH	202	McInteer
	General Botany, Lab.						
	Prerequisite: Botany 1a, 8a, or 25						
*25	General Plant Biology	5	3	M-S	NORH	202	McInteer
	No prerequisites						
CHEMISTRY							
	For Upper Division requirements see First Term.						
21b	Quant. Anal., Lec.	4	{ 9:50- } 10:50 { } 7:00- } 9:40 { } 12:40- } 3:20 {	WF	KH	111	Watters
21b ₁	Quant. Anal., Lab.						
21b ₂	Quant. Anal., Lab.			MTWTh	KH	113	Watters
C30b	Organic Chemistry			3	1, 2, 3	M-S	KH
30c	Organic Chemistry	5	1, 2, 3	M-S	KH	{209 } {215 }	{Barkenbus } {Barkenbus }
	(To obtain credit in C30b, 30c must be passed in same term.)						
	Courses open only to Upper Division and Graduate Students:						
C130b	Organic Chemistry	3	1, 2, 3	M-S	KH	{209 } {215 }	{Barkenbus } {Barkenbus }
130c	Organic Chemistry	5	1, 2, 3	M-S	KH	{209 } {215 }	{Barkenbus } {Barkenbus }
	(To obtain credit in C130b, 130c must be passed in same term.)						
ECONOMICS							
	For Upper Division Requirements, see First Term.						
1	Principles of Economics	5	2	M-S	WH	303	Tolman
*3	Econ. History of the United States	4	2	M-F	WH	101	Jennings
*4	Resources and Industries	4	7	M-F	WH	101	Jennings
7b	Principles of Accounting, Rec... ..	5	1	MWFS	WH	103	Ellis
	Principles of Accounting, Lab... ..		7, 8	TTh	WH	306	Ellis
15	Applied Economics	4	6	M-F	WH	103	Sullivan
	Open only to Upper Division and Graduate Students:						
103	Transportation	4	3	M-F	WH	103	Sullivan
	(Prereq.: Econ. 1)						
107	Statistical Method	4	3	M-F	WH	101	Massie
112a-f	Individual Work in Economics	1 each		By Appt.			Staff

* Open to Freshmen.

SECOND TERM—SUMMER 1947
COLLEGE OF ARTS AND SCIENCES—Continued

Course No.	Subject	Qtr. Hrs.	Hour	Days	Building	Room No.	Instructor
ECONOMICS—Cont.							
Open only to Graduate Students:							
212a-f	Research Problems in Economics 1 each			By Appt.			Staff
ENGLISH							
For Upper Division Requirements, see First Term.							
*1a ₁	English Composition, A&S 25, Ed. 5	3	1	M-Th	McVH	200	
*1a ₂	English Composition, A&S 25, Ed. 5	3	2	M-Th	McVH	200	
*1b ₁	English Composition, A&S 25, Ed. 5	3	1	M-Th	McVH	203	
*1b ₂	English Composition, A&S 30..	3	2	M-Th	McVH	211	
*1b ₃	English Composition, A&S 25, Ed. 5	3	3	M-Th	McVH	210	
*1b ₄	English Composition, A&S 30..	3	3	M-Th	McVH	206	
*1b ₅	English Composition, A&S 25, Ed. 5	3	6	M-Th	McVH	200	
*1b ₆	English Composition, A&S 30..	3	6	M-Th	McVH	211	
*1b ₇	English Composition, A&S 25, Ed. 5	3	6	M-Th	McVH	203	
*1b ₈	English Composition, A&S 30..	3	6	M-Th	McVH	230	
*1c ₁	English Composition, A&S 25, Ed. 5	3	1	M-Th	McVH	211	
*1c ₂	English Composition, A&S 30..	3	1	M-Th	McVH	231	
*1c ₃	English Composition, A&S 25, Ed. 5	3	2	M-Th	McVH	230	
*1c ₄	English Composition, A&S 30..	3	2	M-Th	McVH	203	
*1c ₅	English Composition, A&S 25, Ed. 5	3	3	M-Th	McVH	200	
*C6	The Essentials of Speech	4	2	M-F	McVH		Sterrett
Not open to Freshmen:							
3a	History of English Literature..	3	1	M-Th	McVH		
3b ₁	History of English Literature..	3	2	M-Th	McVH		
3b ₂	History of English Literature..	3	3	M-Th	McVH		
3c	History of English Literature..	3	4	M-Th	McVH		
C32	Voice Development	4	1	M-F			Briggs
C33	Expressive Reading	4	2	M-F			Briggs
C38	Oral Interpretation	4	4	M-F	McVH		Sterrett
Courses open only to Upper Division and Graduate Students:							
106b	English Romantic Prose	5	2	M-S	McVH	206	Ward
C107b	Victorian Prose	4	3	M-F	McVH	204	Brady
Open only to Graduate Students:							
C210	Seminar (Bibliography)	4	1	M-F	McVH	204	Brady

* Open to Freshmen.

SECOND TERM—SUMMER 1947
COLLEGE OF ARTS AND SCIENCES—Continued

Course No.	Subject	Qtr. Hrs.	Hour	Days	Building	Room No.	Instructor
GEOGRAPHY							
	For Upper Division Requirements, see First Term.						
*10 ₁	Economic Geography	4	1	M-F	BS	224	Tuthill
*3b	Societies Around the World	5	2	M-S	BS	220	Hutter
34a	Regional Field Geography	4	Tour of Mexico				Schwendeman
Courses open only to Upper Division and Graduate Students:							
108	Geography of Oceania and the Pacific Area	4	4	M-F	BS	224	Tuthill
120	Geography of Kentucky	4	3	M-F	BS	224	Hutter
GEOLOGY							
	For Upper Division Requirements, see First Term.						
*50a	Outlines of Geology	3	2	M-Th	MH	108	Hamilton
*50b	Outlines of Geology	3	3	M-Th	MH	108	Hamilton
*14b	Elementary Field Geology	1	5-7	T	MH	108	Hamilton
GERMAN LANGUAGE AND LITERATURE							
	For Upper Division Requirements, see First Term.						
3a	Selected Readings (Prereq.: 2b)	4		By Appt.	MH	303a	
Courses open only to Upper Division and Graduate Students:							
101c	19th Century Literature	3		By Appt.	MH	303a	
	(Prereq.: 3b or permission of department)						
105a-f	Independent Work in German	4		By Appt.	MH	303a	
106c	Scientific German	3		By Appt.	MH	303a	
	(Prereq.: 106b or permission of department)						
HISTORY							
	For Upper Division Requirements, see First Term.						
*C4b ₁	Mod. Europe Since the Fr. Rev.	4	2	M-F	FH	204	Lunde
*C4b ₂	Mod. Europe Since the Fr. Rev.	4	4	M-F	FH	204	Goldman
*C8a	Eu. Civilization to 1815	4	1	M-F	FH	204	Carson
†*C8b ₁	Eu. Civilization Since 1815	4	1	M-F	FH	204	Carson
†*C8b ₂	Eu. Civilization Since 1815	4	2	M-F	FH	201	Goldman
†*C8b ₃	Eu. Civilization Since 1815	4	3	M-F	FH	204	Lunde
†*C10a ₁	Am. Civilization, 1607-1865	4	2	M-F	FH	301	Hopkins
†*C10a ₂	Am. Civilization, 1607-1865	4	4	M-F	FH	201	Cotterill

* Open to Freshmen.

† Note.—History 8a and 8b duplicate Pol. Sci. 8a and 8b and History 4a, b. History 10a and 10b duplicate Pol. Sci. 10a, 10b and 51, and History 5a and 5b.

SECOND TERM—SUMMER 1947
COLLEGE OF ARTS AND SCIENCES—Continued

Course No.	Subject	Qtr. Hrs.	Hour	Days	Building	Room No.	Instructor
HISTORY—Cont.							
†*C10b ₁	Am. Civilization Since 1865.....	4	4	M-F	FH	301	Hopkins
†*C10b ₂	Am. Civilization Since 1865.....	4	3	M-F	FH	301	Kirwan
†*C10b ₃	Am. Civilization Since 1865.....	4	5	M-F	FH	201	Wall
†*C10b ₄	Am. Civilization Since 1865.....	5	1	M-S	FH	201	England
Courses open only to Upper Division and Graduate Students:							
C106b	Latin American Republics	4	3	M-F	FH	202	Cotterill
124b	Social and Cultural Hist. of the U. S. Since 1865.....	4	2	M-F	FH	202	Robert
147	Recent History of the U. S.....	4	6	M-F	FH	204	Wall
180b	The South in the Civil War and Reconstruction	4	4	M-F	FH	202	Eaton
180c	History of the New South.....	4	1	M-F	FH	202	Eaton
Open only to Graduate Students:							
C247b	Seminar in United States History	4	6, 7, 8	MWF	FH	202	Robert
HYGIENE AND PUBLIC HEALTH							
For Upper Division Requirements, see First Term.							
*9	Hygiene for Teachers	3	3	M-Th	BS	125	Hamilton
Courses open only to Upper Division and Graduate Students:							
C115	Communicable Diseases	3	4	T-F	BS	125	Hamilton
111a-d	Independent Work in Hygiene and Public Health	4 each		By Appt.	HB Lab.		Hamilton
JOURNALISM							
For Upper Division Requirements, see First Term.							
10a	Survey of Journalism	4	3	M-F	McVH	54	McLaughlin
100a	News Reporting	3	3	MTThF	McVH	53	Plummer
Courses open only to Upper Division and Graduate Students:							
102	Community Journalism	4	1	M-F	McVH	53	Portmann
109a	Typography	2	2, 3	TThS	McVH	50	Portmann
110	Supervision of High School Publications	4	4	M-F	McVH	54	Portmann
111	Verbal Criticism	4	4	M-F	McVH	66	Tucker
112	Critical Writing for the Press..	4	2	M-F	McVH	54	McLaughlin

* Open to Freshmen.

† This course 101a-d (Independent Work) will be given as the demand for it justifies.

SECOND TERM—SUMMER 1947
COLLEGE OF ARTS AND SCIENCES—Continued

Course No.	Subject	Qtr. Hrs.	Hour	Days	Building	Room No.	Instructor
LIBRARY SCIENCE							
For Upper Division Requirements, see First Term.							
†101a-d	Independent Work	1 each		By Appt.	UL	313	Deily
129b	Cataloging and Classification	4	2	M-S	UL	314	Wofford
	Prereq.: L. S. 129a						
132	Library Work with Children.....	3	5	M-F	UL	314	Martin
	(L. S. 128 advisable as prereq.)						
139	Field Work	3		As arranged			Deily
	Prereq.: L. S. 121, 129a, b, 133a, 145, 152a, b						
145	Organization of Library Materials	2	4	MWF	UL	314	Wofford
	Prereq.: L. S. 121						
152b	Book Selection	3	3	M-F	UL	314	Martin
	Prereq.: L. S. 152a						
154	Seminar	3	6	M-F	UL	314	Deily
	Prereq.: L. S. 121, 129a, b, 133a, 145, 152a, b						
MATHEMATICS AND ASTRONOMY							
For Upper Division Requirements, see First Term.							
Courses open only to Upper Division and Graduate Students:							
16a-d	Tutorial Work in Mathematics	1 each		By Appt.	McVH		Staff
110a-f	Independent Work in Math...4 each	4		By Appt.	McVH		Staff
118	Solid Analytics	4		By Appt.	McVH	107	Brown
	Courses open only to Graduate Students:						
208	Theory of Functions of a Real Variable	4		By Appt.	McVH	109	Goffman
MUSIC							
For Upper Division Requirements, see First Term.							
*A	An Introduction to the Humanities Through the Study of Music (for both Music Majors and non-Music Majors)	3	3	M-Th	McVH	**	Capurso
*20b	Survey of Musical Literature....	3	4	M-Th	McVH	**	Capurso
Applied Music							
*15a-L	Applied Music—Piano	2		By Appt.	†	1	Cullis
*C15a-L	Applied Music—Piano	1		By Appt.	†	1	Cullis
*17a-L	Applied Music—Voice	2		By Appt.	‡	1	Kiviniemi
*C17a-L	Applied Music—Voice	1		By Appt.	‡	1	Kiviniemi

* Open to Freshmen.

** 4th floor.

† 628 S. Lime.

‡ 624 S. Lime.

SECOND TERM—SUMMER 1947
COLLEGE OF ARTS AND SCIENCES—Continued

Course No.	Subject	Qtr. Hrs.	Hour	Days	Building	Room No.	Instructor
	MUSIC—Cont.						
*18a-L	Applied Music—Organ	2		By Appt.	MeH	Aud	Cullis
*C18a-L	Applied Music—Organ	1		By Appt.	MeH	Aud	Cullis
	Courses open only to Upper Division and Graduate Students:						
114b	Instrumental Conducting and Score Reading	3	2	M-Th	McVH	**	Capurso
	Courses open only to Graduate Students:						
217a, b, c	Applied Music—Voice	2 each		By Appt.	‡	1	Kiviniemi
	PHILOSOPHY						
	For Upper Division Requirements, see First Term.						
*A	An Introduction to the Humanities Through the Study of Philosophy	3	6	M-Th	FH	205	Kuiper
21	Introduction to Philosophy	4	3	M-F	FH	205	Kuiper
51	Ethics	4	2	M-F	FH	205	De Boer
	Courses open only to Upper Division and Graduate Students:						
120	Great Religions of the World....	4	4	M-F	FH	205	De Boer
	Courses open only to Graduate Students:						
201b	Seminar in Phil.	2		By Appt.	FH	205	Staff
	PHYSICAL EDUCATION						
	For Upper Division Requirements, see First Term.						
*C31	Sports and Games (Men).....	4	1, 2	D	MG		Johnson
	Courses open only to Upper Division and Graduate Students:						
115	History and Survey of the Dance	4	4	M-F	FH		Shaw
125	Administration and Organization of Recreation	4	3	M-F	FH		McCubbin
131	Advanced Basketball	3	2	M-Th	FH		Lancaster
142	Advanced Football	3	4	M-Th	FH		McCubbin
	Open only to Graduate Students:						
202	Problems Course in Contemporary Movements in Physical Education	4	3	M-F	FH		
204	Current Studies in the Administration of Athletics	3	3	M-Th	FH		Lancaster

* Open to Freshmen.

** 4th floor.

‡ 624 S. Lime.

SECOND TERM—SUMMER 1947
COLLEGE OF ARTS AND SCIENCES—Continued

Course No.	Subject	Qtr. Hrs.	Hour	Days	Building	Room No.	Instructor
PHYSICS							
7b	For Upper Division Requirements, see First Term. Gen. Elem. Physics	7	1, 2	D	PENCE	201	Koppius
POLITICAL SCIENCE							
*C8b	For Upper Division Requirements, see First Term. European Civilization Since 1815	4	5	M-F	A	301	Stout
*C10a ₁	American Civilization 1607-1865	4	2	M-F	A	301	Stout
*C10b ₁	American Civilization Since 1865	4	3	M-F	A	302	Povlovich
*C51 ₁	American Government	4	3	M-F	A	301	Vanlandingham
*C51 ₂	American Government	4	5	M-F	A	302	Povlovich
C80	State Government.....	4	1	M-F	A	203	Vanlandingham
Courses open only to Upper Division and Graduate Students:							
C100	Latin American Relations	4	3	M-F	A	203	Edelmann
C155a	Comparative Government—Parliamentary Democracies..	4	4	M-F	A	203	Edelmann
C159b	American Constitutional Development	4	2	M-F	A	302	Trimble
C180a-d	Independent Work	4	By Appt.				Staff
Courses open only to Graduate Students:							
C211	Constitution and Civil Rights..	4	4	M-F	A	202	Trimble
PSYCHOLOGY							
*2	For Upper Division Requirements, see First Term. Applied Psychology. Prereq.: Psy. 1	4	3	M-F	NH	112	Mellenbruch
5	Psychology of Advertising and Selling. Prereq.: Psy. 1.....	4	2	M-F	NH	112	Mellenbruch
7	Psychology of the Child. Prereq.: Psychology 1	4	1	M-F	Agr		Humphreys
8	Individual Differences. Prereq.: Psychology 1	4	3	M-F	NH		Newbury
Courses open only to Upper Division and Graduate Students:							
115	Genetic Psychology. Prereq.: Psy. 1	4	4	M-F	NH	112	Newbury
106	Industrial Psychology. Prereq.: Psy. 1 or equivalent	4	3	M-Th			Calvin

*Open to Freshmen.

Note.—Pol. Sci. 8a and 8b duplicate History 8a, 8b and 4a and 4b, Pol. Sci. 10a and 10b duplicate History 10a, 10b, 5a, 5b and P. S. 51.

SECOND TERM—SUMMER 1947
COLLEGE OF ARTS AND SCIENCES—Continued

Course No.	Subject	Qtr. Hrs.	Hour	Days	Building	Room No.	Instructor
*1a	RADIO ARTS Radio Today	3	4	{MT } {WTh }	McVH	Rad. Sta.	Sulzer
	ROMANCE LANGUAGES For Upper Division Requirements, see First Term.						
<p>Note.—No University credit for duplicating work done in languages in High School. One year of High School language study is considered to be the equivalent of one quarter of University language study. Example: A student having had two years of High School French should take R. L. 2a.</p>							
2b	Intermediate French	4	1	M-F	MH	308	
3b	French Conversation and Composition	3	3	M-Th	MH	301	Ryland
6a	French Novel and Drama	4	5	M-F	MH	308	
7b	Intermediate Spanish	4	3	M-F	MH	308	
9a	Spanish Novel and Drama	4	1	M-F	MH	306b	Keller
6b, c	French Novel and Drama	4	4	M-F	MH	308	Niess
9b, c	Spanish Novel and Drama	4	2	M-F	MH	308	Keller
<p>Courses open only to Upper Division and Graduate Students:</p>							
109c	Fr. Lit. XIX Cent.	3	4	M-Th	MH	306b	Ryland
112c	Sp. Lit. XIX Cent.	3	2	M-Th	MH	306b	Server
115c	Fr. Lit. of the XVIII Cent.	3	3	M-Th	MH	306b	Niess
114a-h	Independent Work	3		By Appt.			
SOCIAL WORK							
<p>For Upper Division Requirements, see First Term. Courses open only to Upper Division and Graduate Students:</p>							
105	Child Welfare Services	4	3	M-F	McVH	326	Wetzel
127b	Tutorial Work in Social Work	1	(To be arranged)		McVH	326	Wetzel
<p>Courses open only to Graduate Students:</p>							
225	Social Insurance	2	2	TThS	McVH	326	Wetzel
SOCIOLOGY							
<p>For Upper Division Requirements, see First Term.</p>							
*C3b	Societies Around the World	4	2	M-F	FH	106	Hatch
*7	Social Institutions	4	3	M-F	FH	105	Anderson
<p>Courses open only to Upper Division and Graduate Students:</p>							
128	Human Resources of the South	4	4	M-F	FH	105	Anderson
112	The Community	4	3	M-F	FH	106	Hatch
114d-f	Independent Work in Sociology	3	4	M-Th	FH	102	Sanders
164	The Balkans: Study of Peasant Society	4	2	M-F	FH	105	Sanders

* Open to Freshmen.

SECOND TERM—SUMMER 1947
COLLEGE OF ARTS AND SCIENCES—Continued

Course No.	Subject	Qtr. Hrs.	Hour	Days	Building	Room No.	Instructor
ZOOLOGY							
For Upper Division Requirements, see First Term.							
*1b ₁	General Zoology, Lec.	4	4	M-F	BS	B8	Allen
*1b ₂	General Zoology, Lab.		3	M-F	BS	B9	Allen
Open only to Upper Division and Graduate Students:							
106 ₁	Embryology, Lec.	6	2	M-S	BS	125	Brauer
106 ₂	Embryology, Lab.		3	M-S	BS	126	Brauer
110a-f	Independent Work	4	By	Appt.			Staff
Open only to Graduate Students:							
210a-c	Problems in Zoology	4	By	Appt.			Staff

* Open to Freshmen.

SECOND TERM—SUMMER 1947
COLLEGE OF AGRICULTURE AND HOME ECONOMICS

Course No.	Subject	Qtr. Hrs.	Hour	Days	Building	Room No.	Instructor
AGRICULTURAL ENTOMOLOGY							
*103	Economic Entomology: Fruit and Garden Insects	4	2	M-F	Agr	1	Townsend
AGRONOMY							
1 ₁	Elementary Farm Crops, Lec...	5	2	M-F	Agr	301	Phillippe
1 ₂	Elementary Farm Crops, Lab...		3	MW	Agr	304	Phillippe
1 ₃	Elementary Farm Crops, Lab...		4	TTh	Agr	304	Phillippe
FARM ENGINEERING							
4a	Farm Shop	3	5, 6	M-Th	AE	106	Young
4b	Farm Shop	3	2, 3	T-F	AE	106	Young
ANIMAL INDUSTRY							
21 ₁	Farm Dairying	4	4	D	D	113	Morrison
*103	Work Stock Production	3	4	MTThF	SP	101	
*120	Dairy Cattle Breeding	4	1	D	D	113	Ely
*121	Dairy Cattle Feeding and Management	4	3	D	D	113	Ely
FARM ECONOMICS							
†202b	Economics of Production as Applied to Agriculture	3	6	M-Th	Agr	4	McComas
RURAL SOCIOLOGY							
10	Rural Sociology	3	1	M-Th	Agr	205	Beers
*110	Rural Sociology	3	1	M-Th	Agr	205	Beers
*140a-c	Rural Life	1		By Appt.			Beers
MARKETS AND RURAL FINANCE							
*110	Agricultural Prices	3	2	M-Th	Agr	4	Card
HOME ECONOMICS							
6	Foods	4	3, 4	M-F	HE	201	Barkley
27	Clothing	5	1, 2	D	HE	308	Latzke
41	Institution Marketing	4	1	M-F	HE	9	Helton
*105a	Experimental Cookery	4	2, 3	M-F	HE	205	Woolridge
*112	Nutrition in Disease	4	5, 6	M-F	HE	204	Woolridge
*114	Food Preservation	3	3, 4	M-Th	HE	200	Helton
*125	Advanced Textiles	3	5	M-Th	HE	302	Sumner
*127	Advanced Clothing	4	2, 3	M-F	HE	307	Seeds
*135	Decorative Textiles	3	6	M-Th	HE	302	Sumner
*139a							
or b	Problems in Interior Decoration	3	4	M-F	HE	300	Seeds
*154	Family Living	4	4	M-F	HE	105	Mumford
*156	Play and Play Materials	3	5	M-Th	HE	9	Bentley
*161	Consumer Problems	4	2	M-F	HE	105	Wilmore
*162b	Home Management and Family Relationships	5		By Appt.	HE		Wilmore

* Courses open only to Upper Division and Graduate Students.

† Courses open only to Graduate Students.

SECOND TERM—SUMMER 1947

COLLEGE OF ENGINEERING

Course No.	Subject	Qtr. Hrs.	Hour	Days	Building	Room No.	Instructor
CIVIL ENGINEERING							
114	Advanced Surveying	4	{ 9:50- } 11:05	{ M-Th	Eng	205	Shaver
120	Hydraulics	3	6 hrs. By Appt.	M-Th	Eng	206	Cheek
123	Hydraulics Laboratory	2	8:25-9:40	M-Th	Eng	108	Cheek
			1:00-5:00	TTh			
MINING ENGINEERING							
126b	Development of Mines	3	6 hrs. By Appt.		Eng		Carter
129b	Mine Ventilation and Drainage	3	6 hrs. By Appt.		Eng		Carter

SECOND TERM—SUMMER 1947
COLLEGE OF LAW

Course No.	Subject	Qtr. Hrs.	Hour	Days	Building	Room No.	Instructor
FIRST YEAR							
C103	Property I	2	2:00-2:50	TWThF	L	100	Staff
C106b	Pleading II	2	{ 8:00- } { 8:50 }	{ MT } { WTh }	L	100	Randall
SECOND AND THIRD YEARS							
179	Legislation	2	{ 2:00- } { 2:50 }	{ MT } { WTh }	L	212	Staff

SECOND TERM—SUMMER 1947

COLLEGE OF EDUCATION

Course No.	Subject	Qtr. Hrs.	Hour	Days	Building	Room No.	Instructor
ADMINISTRATION							
101	School Organization	4	2	M-F	E	222	Dunn
	Courses open only to Graduate Students:						
210a, b	Independent Work in School Administration	4		By Appt.	E	232	Meece
225b	Supervision of Instruction	4	3	M-F	E	140	Spain
231	Financing Public Education	4	3	M-F	E	108	Meece
301a, b	Research Problems in Educational Administration	4		By Appt.	E	232	Meece
321a, b	Research Problems in Higher Education	4		By Appt.	E	128	Taylor
AGRICULTURAL EDUCATION							
175a	Modern Educational Problems (Aug. 14-30)	4		By Appt.	E	219	Hammonds and Staff
175c	Modern Educational Problems (July 25-August 13)	4		By Appt.	E	144b	Tabb
	Courses open only to Graduate Students:						
226b	Problems of the School Curriculum (July 25-Aug. 13)	4		By Appt.	E	226	Hammonds and Staff
287a	Advanced Problems in Agricultural Education	5		By Appt.	E	219	Hammonds, Armstrong Tabb
289a, b	Research in Agricultural Education	5		By Appt.	E	219	Hammonds, Armstrong Tabb
BUSINESS EDUCATION							
158a	Teaching Secretarial Subjects	3	4	MWThF	WH	103	Thomas
184	Teaching Office Appliances	3	6	MTWF	WH	207	Thomas
	Courses open only to Graduate Students:						
208a-d	Problems in Business Education	4		By Appt.	WH	203	Lawrence
270	Business Teacher Education in Colleges and Universities	4	3	M-F	WH	102	Lawrence
271	The Supervision of Business Education	3	2	T-F	WH	205	Lawrence
272a, b	Independent Work in Business Education	4		By Appt.	WH	203	Lawrence
CURRICULUM AND INSTRUCTION							
175g	Modern Educational Problems: Education of Handicapped Children (July 25-August 13)	4		By Appt.	E	107	Baldree
	Courses open only to Graduate Students:						
205b	Review of Current Educational Literature	4	2	M-F	E	144a	Hartford
227b	Techniques in Curriculum Construction	4	6	M-F	E	131	Spain
230	Problems of Educational Sociology	4	3	M-F	E	222	Hartford
246	Motion Pictures in Education..	4	1	M-F	E	222	

SECOND TERM—SUMMER 1947
COLLEGE OF EDUCATION—Continued

Course No.	Subject	Qtr. Hrs.	Hour	Days	Building	Room No.	Instructor
EDUCATIONAL PSYCHOLOGY							
C122	Educational Tests and Measurements for High School Teachers	4	4	M-F	E	222	Ross
Courses open only to Graduate Students:							
254	Problems in Educational Psychology	4	2	M-F	E	136	Ross
255a	Guidance in Today's Schools (July 25-August 13)	4	By	Appt.	E	207	Bell
255b	Techniques in Counseling (August 14-30)	4	By	Appt.	E	207	Bell
ELEMENTARY EDUCATION							
110	Advanced Industrial Arts	3	1, 2	M-Th	E	170	Haines
C173	Teaching Literature of Children	4	4	M-F	E	131	Duncan
Course open only to Graduate Students:							
212	The Elementary School	5	2	D	E	131	Duncan
HOME ECONOMICS EDUCATION							
226a	Problems of the School Curriculum (Future Homemakers Course) (July 25-August 13)	4	1, 3	M-F	E	Cafe	
261	Home Economics Supervision (July 25-August 13)	4	2, 4	M-F	E	140	Parker
269	Evaluation in Home Economics Education (August 14-30)	4	2, 4	M-F	E	140	Parker
INDUSTRIAL EDUCATION							
83	Principles of Trade Teaching (August 4-16)	3	2, 3	M-F	E	208	Crumpton
134	Organization and Operation of Part-Time and Evening Classes (August 4-16)	3	2, 3	M-F	E	104	Hankins
SECONDARY EDUCATION							
105	Fundamentals of Secondary Education	4	3	M-F	E	144a	Cherry
Courses open only to Graduate Students:							
214b	The Secondary School	4	3	M-F	E	131	Ligon
232	High School Administration	4	1	M-F	E	131	Cherry

SECOND TERM—SUMMER 1947
COLLEGE OF COMMERCE

Course No.	Subject	Qtr. Hrs.	Hour	Days	Building	Room No.	Instructor
1	Principles of Economics	5	2	M-S	WH	303	Tolman
*3	Econ. History of United States	4	2	M-F	WH	101	Jennings
*4	Resources and Industries	4	7	M-F	WH	101	Jennings
6	Secretarial Accounting	3	8	MTThF	WH	103	Thomas
7b	Principles of Accounting, Rec...	5	1	MWFS	WH	103	Ellis
	Principles of Accounting, Lab.		7, 8	TTh	WH	306	Ellis
9	Business Organization	4	4	M-F	WH	303	Tolman
10	Principles of Marketing	5	3	M-F	WH	303	DeVoe
13b	Secretarial Practice, Shorthand	4	3	M-S	WH	301	
	(Prereq.: Com. 13a or equivalent)						
14a	Adv. Secretarial Practice	4	1	M-F	WH	101	
14b	Adv. Secretarial Practice	4	3	M-F	WH	301	
15	Applied Economics	4	6	M-F	WH	103	Sullivan
	(Not open to Commerce students)						
17a	Secretarial Practice, Typewriting	3	1	MWThF	WH	301	
	(Prereq. or concurrent: Eng. 1a)						
17b	Secretarial Practice, Typewriting	3	5	MWThF	WH	301	
20	Principles of Advertising	4	1	M-F	WH	303	McIntyre
101	Secretarial Office Practice	2	By	Appt.			Lawrence
103	Transportation	4	3	M-F	WH	103	Sullivan
106b	Intermediate Accounting	4	6	M-F	WH		Beals
	(Prereq.: Com. 7a and 7b)						
107	Statistical Method	4	3	M-F	WH	101	Massie
109b	Business Law	4	7	M-F	WH	103	Haun
112a-f	Individual Work in Economics	1 each	By	Appt.			Staff
118	Cost Accounting	4	1	M-F	WH	205	Beals
131	Investments	4	2	M-F	WH	103	Pickett
	(Prereq.: Econ. 105, Com. 117)						
135	Advanced Marketing	3	6	MTThF	WH	101	DeVoe
	(Prereq.: Com. 10)						
137	Problems in Management	4	4	M-F	WH	102	Carter
151	Secretarial Statistics	4	3	M-F	WH	101	Massie
155	Industrial Relations	4	2	M-F	WH	102	Carter
212a-f	Research Problems in Econ...1 each		By	Appt.			Staff

* Open to Freshmen.

