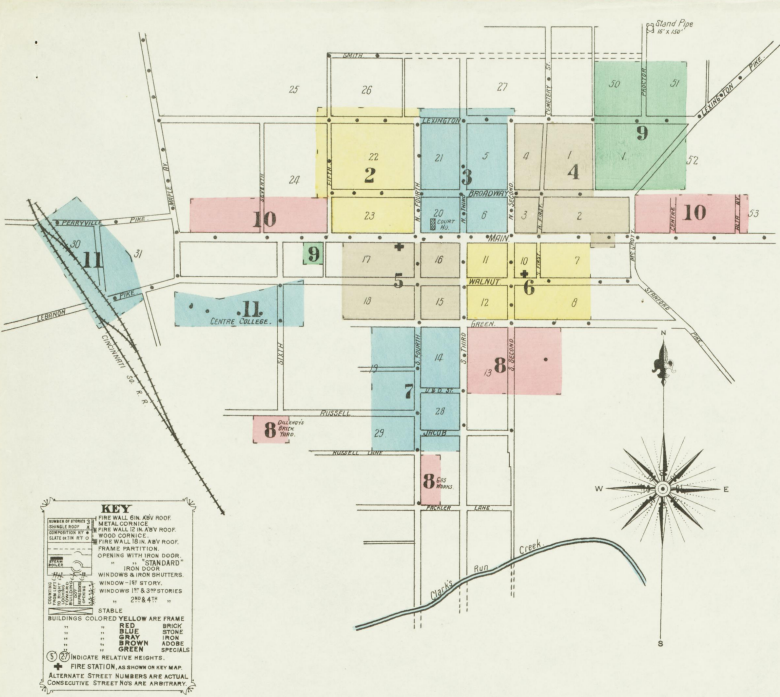
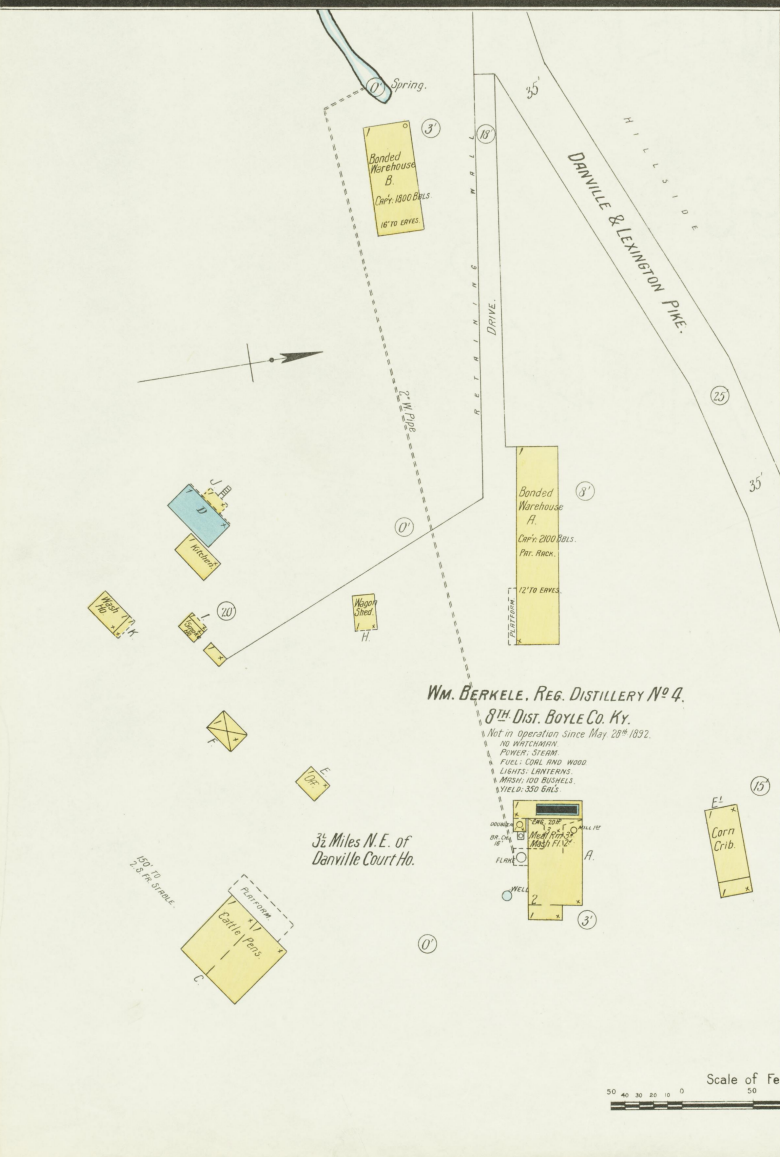


**NOTE.**  
Water Facilities:  
WATER SYSTEM OWNED BY CITY.  
SEWER SYSTEM:  
STANDARD PIPE 16" X 150".  
WATER FROM DIA RIVER  
PUMPING STATION ABOUT 5 MILES N.E. OF COURT HO.  
2,000 GALS. TO 15 MINUTES.  
11 MILES 6" TO 12" MAINS.  
STABLE AND 30 DOUBLE HYDRANTS.  
SANITARY PRESSURE: 70 LBS.  
PRESSURE FROM PUMPS CAN BE THROWN DIRECTLY INTO MAINS.  
Fire Department:  
1 FULL TIME MEN  
3 VOLUNTEER COS. OF 23 MEN EACH FOR ACTUAL SERVICE ONLY.  
1 ONE HORSE HOSE WAGON  
1 TWO HORSE HOSE WAGON  
1 MOTOR & LAUNDRY TRUCK WITH 70' LADDERS AND BRADCOCK CHEMICAL EXTING.  
1 MOTOR & LAUNDRY TRUCK WITH 70' LADDERS AND BRADCOCK CHEMICAL EXTING.  
1500' 2" HOSE.  
300' 1" HOSE.  
1 HORSE DRIVING HARNESS  
FIVE COULDES TO FIRST TEAM HITCHED TO HACK & LBD. TRUCK.  
FIRE ALARM SYSTEM IN CONNECTION WITH TELEPHONE SYSTEM.  
BELL ROOM.  
ELEVATIONS ARE COMPUTED FROM BASE OF STRAND PIPE WHICH IS ASSUMED TO BE 150'.



### INDEX.

STREETS.		SPECIALS.	
Alta Ave.	10	Anderson & Spilman, Elevator	11
Broadway	1-71	Boiler-mills	11
Centre	10	Baptist Church, Colored (brick)	3
D. & D. Street	7	Baptist Church, (frame)	4
Fifth, N.	1105-1185, arbitrary	Berkele, W., Distillery	9
First, N.	1-40	Bruce & Bright, Farm Implements, &c.	5
Fourth, N.	1-65	Caldwell College	9
Green	60-223	Central Hotel Building	9
Lexington	101-112, arbitrary	Kentucky Carriage Co.	4
Main	51-57	Centre College	4
Perryville Ave.	11	Christian Church	3
Proctor	15-27, arbitrary	Cine Southern R. R. Depot	11
Second, N.	1-57	Cine Southern R. R. Depot	11
Seventh	15-31, arbitrary	Cine Southern R. R. Depot	11
Third, N.	1-308	Cine Southern R. R. Depot	11
Walnut	68-223	Cine Southern R. R. Depot	11
City Water works Pumping Station	8		
Glenns Hotel	11		
Cogar & Davis, Hemp Warehouse	11		
County Court House and Jail	3		
Danville Gas-works	8		
Ice and Coal Co.	11		
Planing mill Co.	4		
Public School	4		
Roller mills	11		
Steam Laundry	3		
Dillehay, E. R., Brick yard	8		
Episcopal Church	5		
First Baptist Church	3		
Colored Baptist Church	6		
Presbyterian Church	9		
Glenns Hotel	6		
Harding, S., Planing-mill and Lumber-yard	11		
James Hall	3		
Kentucky Institute for Deaf Mutes	8		
Masonic Hall	3		
Methodist Episcopal Church	5		
Mock, W. R., Distillery	1		
Murphy, T., Carriage Shop	3		
Presbyterian Church (Colored)	5		
Theological Seminary	11		
St. James' A. M. E. Church	6		
Pan's Catholic Church	4		
Second Presbyterian Church	3		
Shaw, T. W., Carriage Factory	4		
Silliman, W., Warehouse	4		



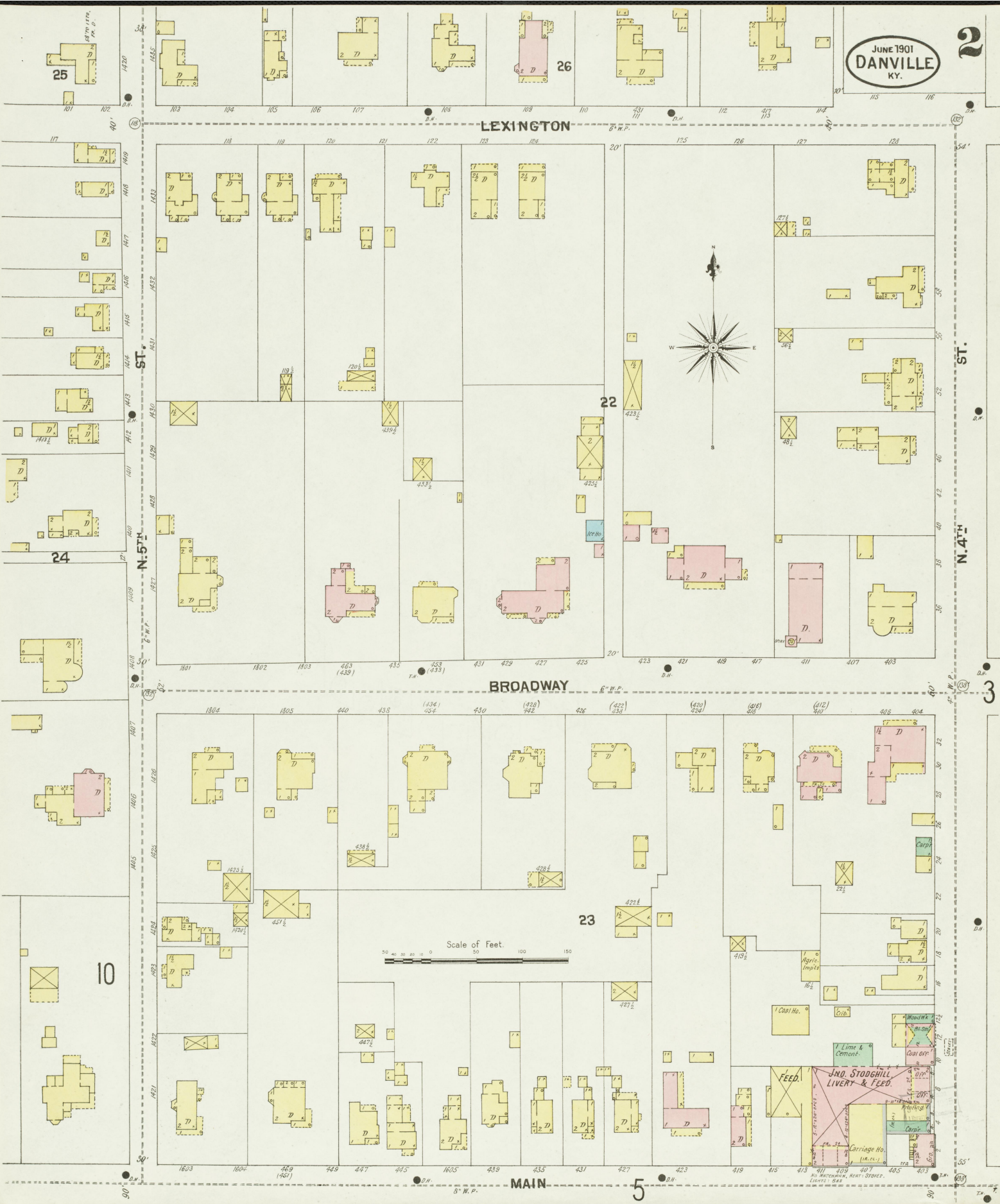
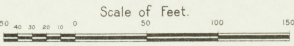
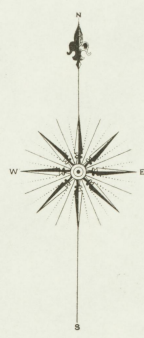
LEXINGTON

BROADWAY

MAIN

N. 5<sup>TH</sup> ST.

N. 4<sup>TH</sup> ST.



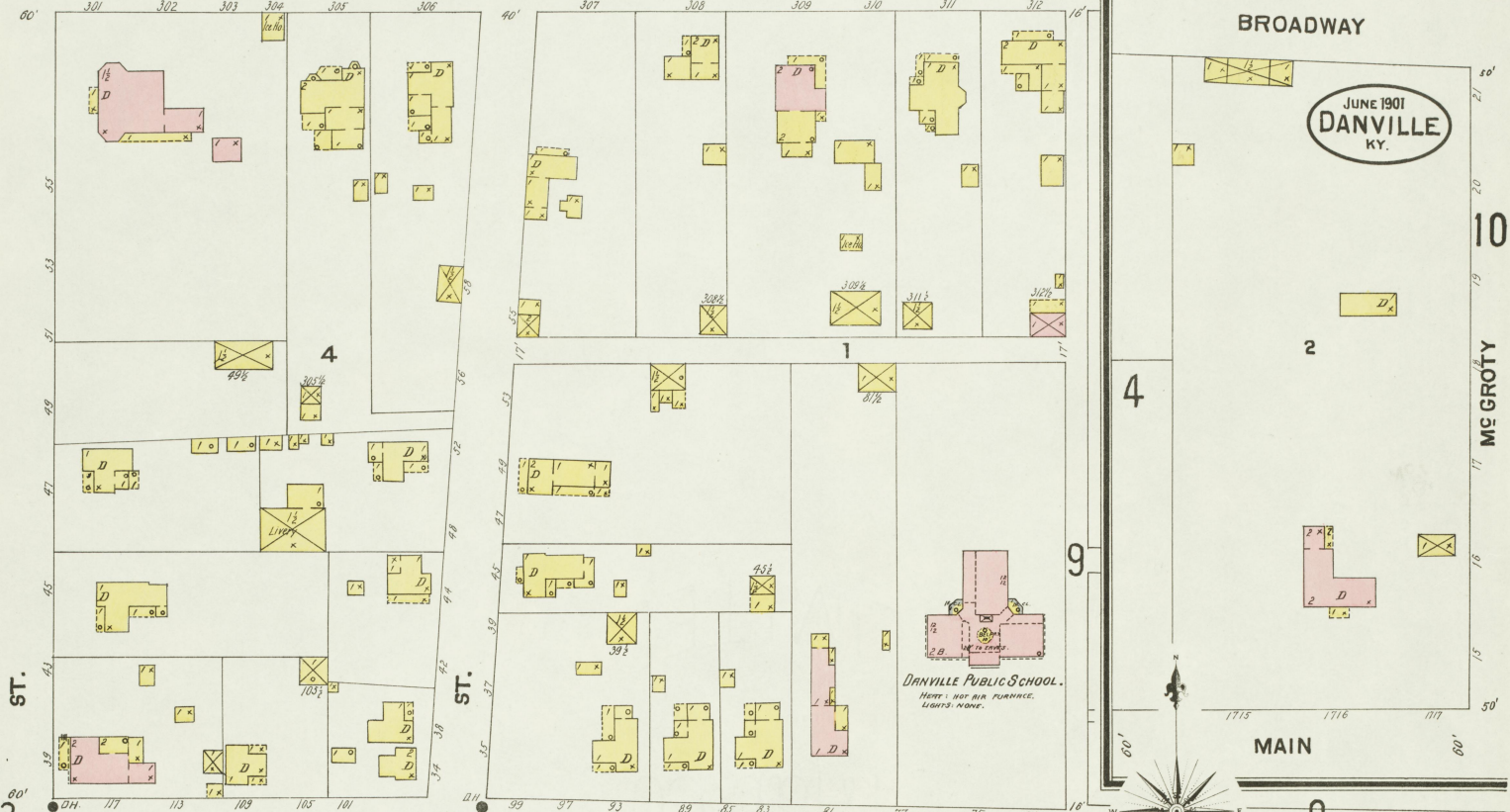


LEXINGTON

BROADWAY

JUNE 1901  
DANVILLE  
KY.

10  
MC GROTY



ST.

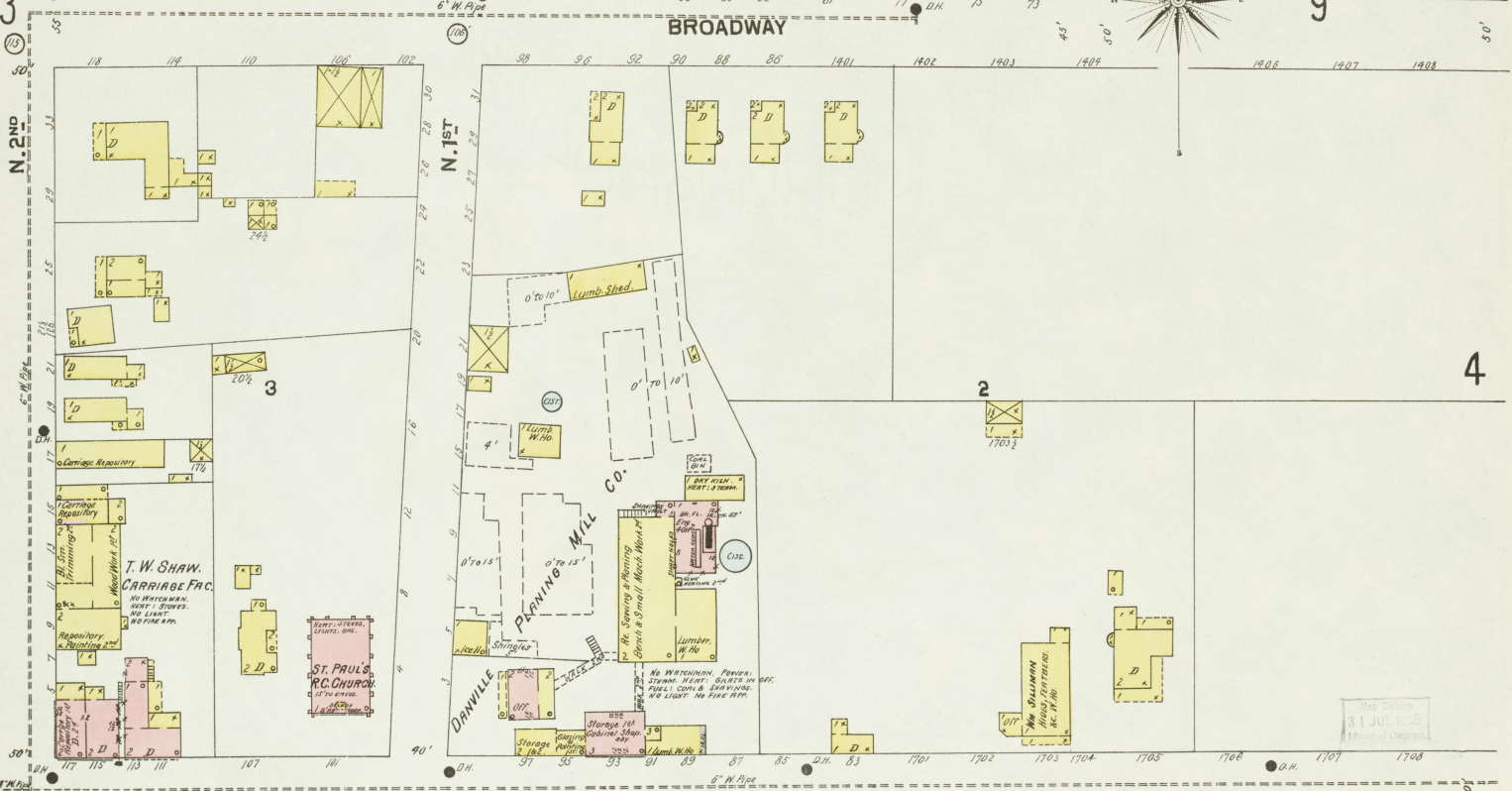
ST.

4

2

MAIN

9



N. 2ND

N. 1ST

4

MAIN

6

Scale of Feet.

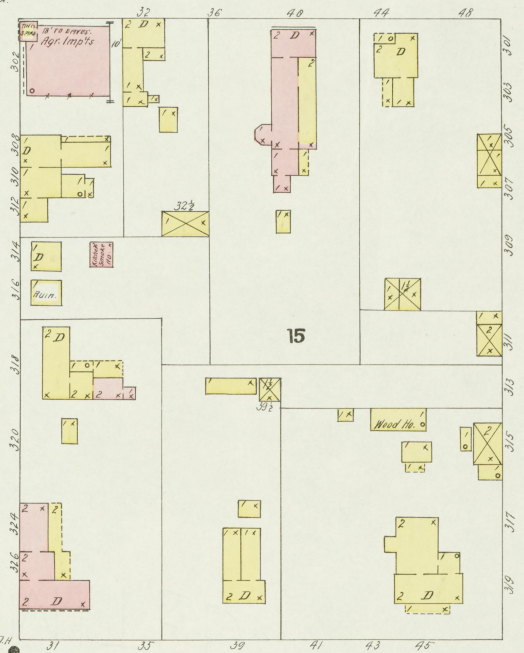
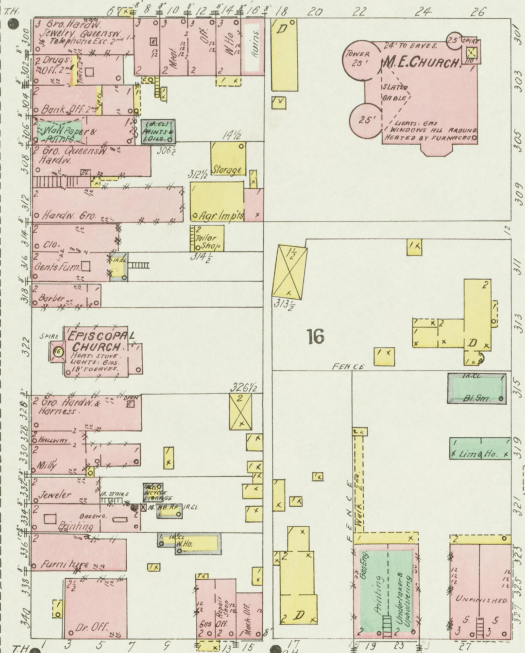
Map Datum  
31 JUL 1915  
1st Edition of Congress

6

5

S. 3<sup>RD</sup> ST.

JUNE 1901  
DANVILLE  
KY.



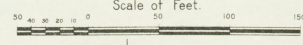
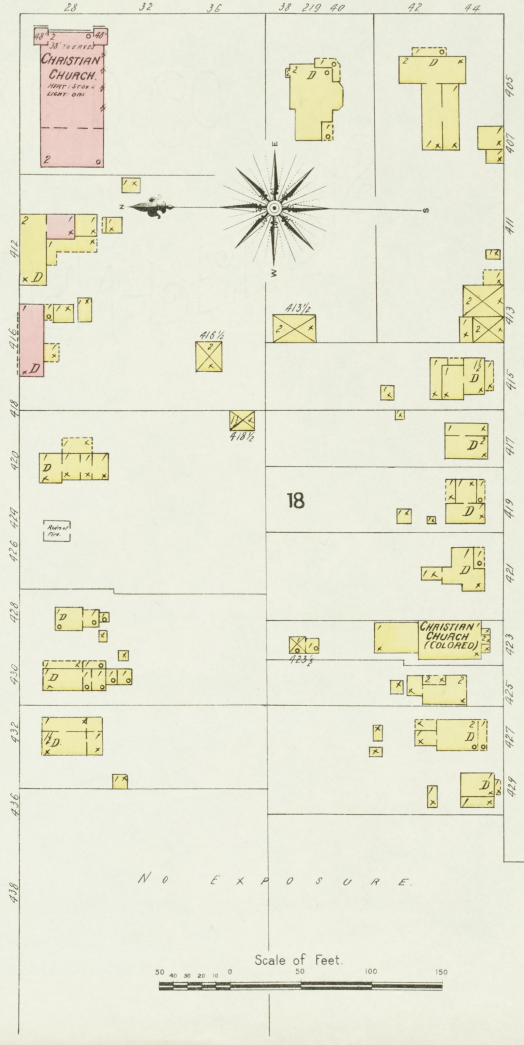
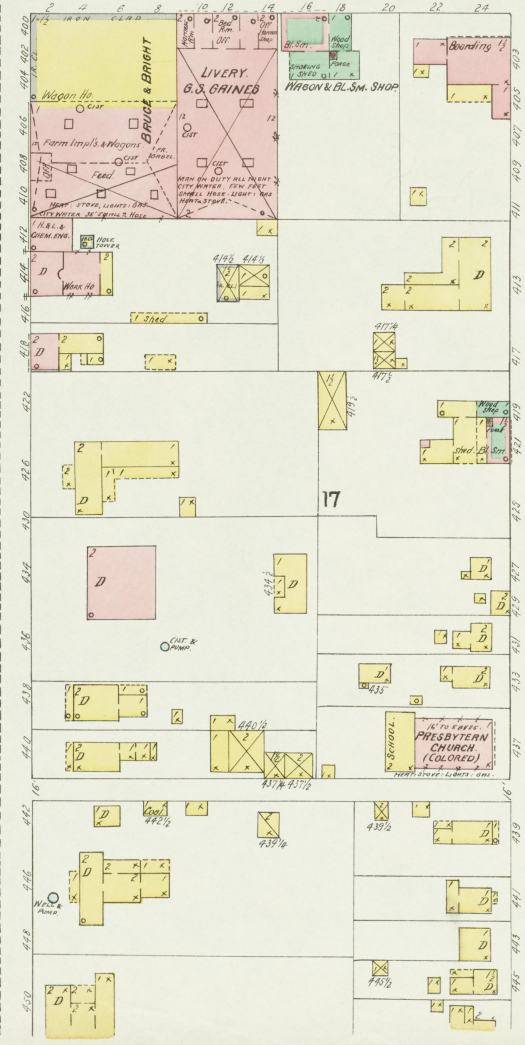
S. 4<sup>TH</sup> ST.

MAIN

WALNUT

GREEN

7



See Section  
31 J. H. S. S.  
Library of Congress

JUNE 1901  
DANVILLE  
KY.

90'

60'

70'

74'

74'

78'

76'

80'

80'

84'

84'

88'

88'

92'

92'

96'

96'

100'

100'

104'

104'

108'

108'

112'

112'

116'

116'

120'

120'

124'

124'

128'

128'

132'

132'

136'

136'

140'

140'

144'

144'

148'

148'

152'

152'

156'

156'

160'

160'

S. 1<sup>ST</sup> ST.

ST.

MAIN

WALNUT

GREEN

4 6 10 12 14 16 20

15 17 19 21 23

4 6 10 12 14 16 20

15 17 19 21 23

4 6 10 12 14 16 20

15 17 19 21 23

4 6 10 12 14 16 20

15 17 19 21 23

4 6 10 12 14 16 20

15 17 19 21 23

4 6 10 12 14 16 20

15 17 19 21 23

4 6 10 12 14 16 20

15 17 19 21 23

4 6 10 12 14 16 20

15 17 19 21 23

4 6 10 12 14 16 20

15 17 19 21 23

4 6 10 12 14 16 20

15 17 19 21 23

4 6 10 12 14 16 20

15 17 19 21 23

4 6 10 12 14 16 20

15 17 19 21 23

4 6 10 12 14 16 20

15 17 19 21 23

4 6 10 12 14 16 20

15 17 19 21 23

4 6 10 12 14 16 20

15 17 19 21 23

4 6 10 12 14 16 20

15 17 19 21 23

4 6 10 12 14 16 20

15 17 19 21 23

4 6 10 12 14 16 20

15 17 19 21 23

4 6 10 12 14 16 20

15 17 19 21 23

4 6 10 12 14 16 20

15 17 19 21 23

4 6 10 12 14 16 20

15 17 19 21 23

4 6 10 12 14 16 20

15 17 19 21 23

4 6 10 12 14 16 20

15 17 19 21 23

4 6 10 12 14 16 20

15 17 19 21 23

4 6 10 12 14 16 20

15 17 19 21 23

4 6 10 12 14 16 20

15 17 19 21 23

4 6 10 12 14 16 20

15 17 19 21 23

4 6 10 12 14 16 20

15 17 19 21 23

4 6 10 12 14 16 20

15 17 19 21 23

4 6 10 12 14 16 20

15 17 19 21 23

4 6 10 12 14 16 20

15 17 19 21 23

4 6 10 12 14 16 20

15 17 19 21 23

4 6 10 12 14 16 20

15 17 19 21 23

4 6 10 12 14 16 20

15 17 19 21 23

4 6 10 12 14 16 20

15 17 19 21 23

4 6 10 12 14 16 20

15 17 19 21 23

4 6 10 12 14 16 20

15 17 19 21 23

4 6 10 12 14 16 20

15 17 19 21 23

4 6 10 12 14 16 20

15 17 19 21 23

4 6 10 12 14 16 20

15 17 19 21 23

4 6 10 12 14 16 20

15 17 19 21 23

4 6 10 12 14 16 20

15 17 19 21 23

4 6 10 12 14 16 20

15 17 19 21 23

4 6 10 12 14 16 20

15 17 19 21 23

4 6 10 12 14 16 20

15 17 19 21 23

4 6 10 12 14 16 20

15 17 19 21 23

4 6 10 12 14 16 20

15 17 19 21 23

4 6 10 12 14 16 20

15 17 19 21 23

4 6 10 12 14 16 20

15 17 19 21 23

4 6 10 12 14 16 20

15 17 19 21 23

4 6 10 12 14 16 20

15 17 19 21 23

4 6 10 12 14 16 20

15 17 19 21 23

4 6 10 12 14 16 20

15 17 19 21 23

4 6 10 12 14 16 20

15 17 19 21 23

4 6 10 12 14 16 20

15 17 19 21 23

4 6 10 12 14 16 20

15 17 19 21 23

4 6 10 12 14 16 20

15 17 19 21 23

4 6 10 12 14 16 20

15 17 19 21 23

4 6 10 12 14 16 20

15 17 19 21 23

4 6 10 12 14 16 20

15 17 19 21 23

4 6 10 12 14 16 20

15 17 19 21 23

CENTRAL HOTEL BLDG.

GILCHERS HO.

S. 2<sup>ND</sup> ST.

ST.

3 5 7 9 11 13 15 17 19 21 23 25

24 26 28 30 32 34 36 38 40 42 44 46 48 50

3 5 7 9 11 13 15 17 19 21 23 25

24 26 28 30 32 34 36 38 40 42 44 46 48 50

3 5 7 9 11 13 15 17 19 21 23 25

24 26 28 30 32 34 36 38 40 42 44 46 48 50

3 5 7 9 11 13 15 17 19 21 23 25

24 26 28 30 32 34 36 38 40 42 44 46 48 50

3 5 7 9 11 13 15 17 19 21 23 25

24 26 28 30 32 34 36 38 40 42 44 46 48 50

3 5 7 9 11 13 15 17 19 21 23 25

24 26 28 30 32 34 36 38 40 42 44 46 48 50

3 5 7 9 11 13 15 17 19 21 23 25

24 26 28 30 32 34 36 38 40 42 44 46 48 50

3 5 7 9 11 13 15 17 19 21 23 25

24 26 28 30 32 34 36 38 40 42 44 46 48 50

3 5 7 9 11 13 15 17 19 21 23 25

24 26 28 30 32 34 36 38 40 42 44 46 48 50

3 5 7 9 11 13 15 17 19 21 23 25

24 26 28 30 32 34 36 38 40 42 44 46 48 50

Central Kentucky Carriage Co.

FOX & LOGAN, LIVERY.

WEGRO HALL

WOOD & COAL YARD

NESTOR HALL

NESTOR BAPTIST CHURCH

ST. JAMES A.M.E. CHURCH

1<sup>ST</sup> COLORED BAPTIST CHURCH

NESTOR BAPTIST CHURCH

NESTOR BAPTIST CHURCH

NESTOR BAPTIST CHURCH

NESTOR BAPTIST CHURCH

NESTOR BAPTIST CHURCH

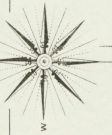
NESTOR BAPTIST CHURCH

NESTOR BAPTIST CHURCH

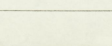
NESTOR BAPTIST CHURCH

NESTOR BAPTIST CHURCH

NESTOR BAPTIST CHURCH



Scale of Feet.



Map Blotting  
31 JUL 1915  
Bureau of Land Management

4

3

5

8

8

7

90'

60'

70'

74'

74'

78'

76'

80'

80'

84'

84'

88'

88'

92'

92'

96'

96'

100'

100'

104'

104'

108'

108'

112'

112'

116'

116'

120'

120'

124'

124'

128'

128'

132'

132'

136'

136'

140'

140'

144'



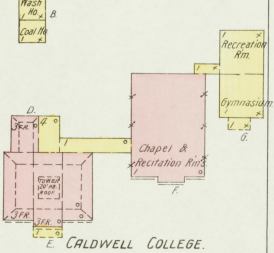
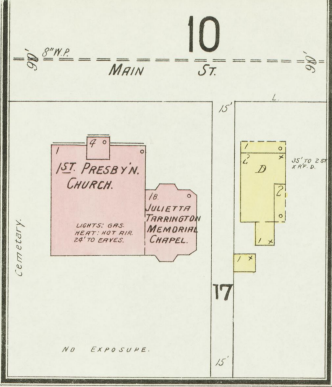




JUNE 1901  
DANVILLE  
KY.

9

EXPOSURE



PROCTOR

LEXINGTON ST.

25'

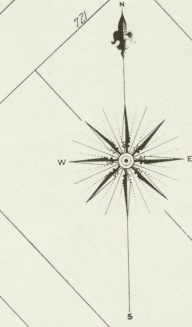
25'

40'

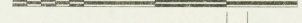
4

50'

1



Scale of Feet.



Mc Garry St.

10

Centre St.

4'

THE PLAN  
31 JULY 1901  
112 1/2

2

5TH ST.

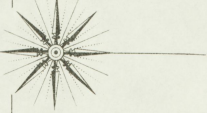
JUNE 1901  
DANVILLE  
KY.

10

9

ALTA AV.

MAIN



Old Cemetery

MAIN

2 ST. x R.F. DR. 150' B.P.C.K.

24

52

MAIN

CENTRE

7TH ST.

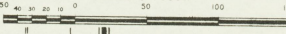
9

52

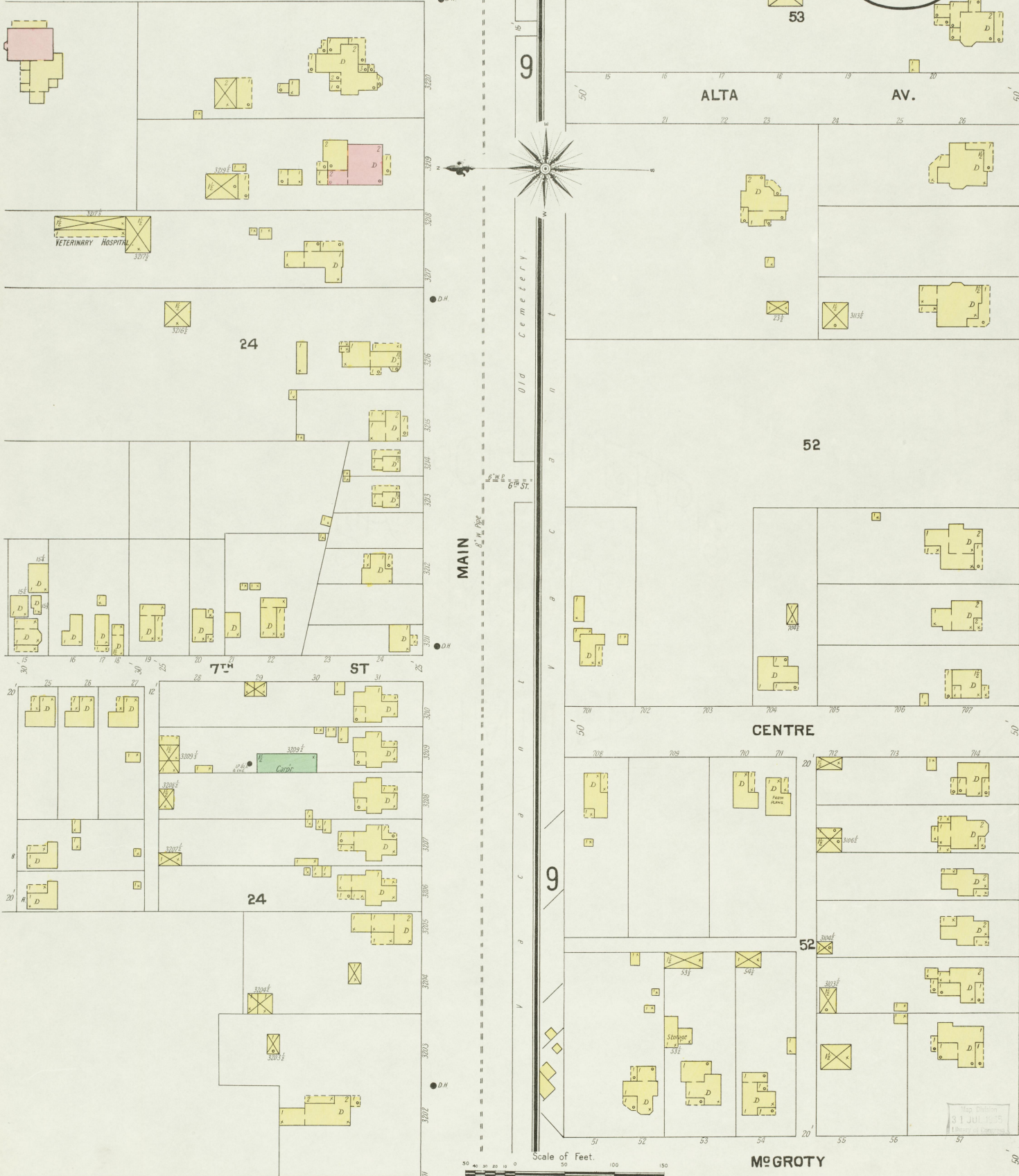
McGROTY

4

Scale of Feet.



Map Printed  
31 JUL 1925  
Library of Congress



JUNE 1901  
DANVILLE  
KY.

**DANVILLE ICE & COAL CO.**

Cold Storage.

Ice Ho.

FREEZING TRANK.

COOLING FREEZING ENG.

3000 ON FOOT ALL NIGHT. NO USE. OVER COOL. LIGHTS: ELEC. CITY WATER. NO FIRE APP.

MACHINE BLD.

**CENTRE COLLEGE**

Preparatory Department.

HEAT, STOVES.

ANDERSON & SPILMAN ELEVATOR.

Copy: 3000 Bush. (Not in Operation)

**PERRYVILLE**

**SAMUEL HARDING PLANING MILL & LUMBER YARD**

Small Scattered Piles of Lumber.

**BOYLE HUMPHREY GYMNASIUM**

**Sayre Library**

**CENTRE COLLEGE**

**Recitation Rooms & Laboratories**

**DANVILLE ROLLER MILLS**

**ANDERSON & SPILMAN**

Run during night part of year. No machinery. Power: Steam. Fuel: Coal. Lights: Coal Oil. Water from Reservoir. Small 2 1/2 inch fire hose. Hose in rollers. One barrel and bucket each fl.

**Machinery:**

20: Grinding 2 1/2 x 30 inch. Iron crusher.

10: Grinding 2 1/2 x 30 inch. Iron mill.

25: 1 Barrel roller. 1 Pulverizer.

30: 2000 bush. Iron crusher. 3 Stokers.

35: 2000 bush. Iron crusher. 3 Stokers.

40: 2000 bush. Iron crusher. 3 Stokers.

45: 2000 bush. Iron crusher. 3 Stokers.

50: 2000 bush. Iron crusher. 3 Stokers.

55: 2000 bush. Iron crusher. 3 Stokers.

60: 2000 bush. Iron crusher. 3 Stokers.

65: 2000 bush. Iron crusher. 3 Stokers.

70: 2000 bush. Iron crusher. 3 Stokers.

75: 2000 bush. Iron crusher. 3 Stokers.

80: 2000 bush. Iron crusher. 3 Stokers.

85: 2000 bush. Iron crusher. 3 Stokers.

90: 2000 bush. Iron crusher. 3 Stokers.

95: 2000 bush. Iron crusher. 3 Stokers.

100: 2000 bush. Iron crusher. 3 Stokers.

105: 2000 bush. Iron crusher. 3 Stokers.

110: 2000 bush. Iron crusher. 3 Stokers.

115: 2000 bush. Iron crusher. 3 Stokers.

120: 2000 bush. Iron crusher. 3 Stokers.

125: 2000 bush. Iron crusher. 3 Stokers.

130: 2000 bush. Iron crusher. 3 Stokers.

135: 2000 bush. Iron crusher. 3 Stokers.

140: 2000 bush. Iron crusher. 3 Stokers.

145: 2000 bush. Iron crusher. 3 Stokers.

150: 2000 bush. Iron crusher. 3 Stokers.

**COOP & DAVIS HEMP TRUCKING & WARE HO.**

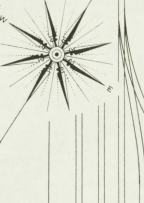
**Hemp Trucking**

**LEBANON PIKE**

**PRESBYTERIAN THEOLOGICAL SEMINARY**

**Library**

31 JUL 1901



**ANDERSON & SPILMAN**

400' 10' Pk.

300' 10' Pk.

200' 10' Pk.

100' 10' Pk.

50' 10' Pk.

25' 10' Pk.

12' 10' Pk.

6' 10' Pk.

3' 10' Pk.

1' 10' Pk.

0' 10' Pk.

