



KEY

FIRE ALARM ADV. ROOF
 METAL CORNER
 ROOF CORNER
 FIRE WALL WITH ADV. ROOF
 FRAME PARTITION
 OPENING WITH ADV. ROOF
 "STANDARD"
 "NON-FUNCTIONAL"
 WINDOW 1ST STORY
 WINDOW IN STORES
 BUILDINGS COLORED YELLOW ARE FRAMED
 RED
 BLUE
 GREEN
 BROWN
 FIRE PROOF
 BUILDINGS
 INDICATE
 RELATIVE HEIGHTS
 AUTOMATIC
 FIRE ALARMS
 FIRE STATION AS SHOWN ON CITY MAP
 & TOWN STREET NUMBERS ARE ACTUAL,
 CONSECUTIVE STREET NOS. ARE ARBITRARY

MAYFIELD

Graves County, KENTUCKY

Sanborn Map Company
 NEW YORK

JUL 22 1925
 Copyright 1925
 by the Sanborn Map Company
 Great care is exercised in the production of our publications
 and in our service but absolute accuracy is not guaranteed.

Population, 8000
 Prevailing Winds, S.W.
 GRAVEL, LEAF, SAND, SHELLS,
 PUBLIC LIGHTS EXISTING.

WATER FACILITIES
 Gravity and direct pressure system of water works owned by Kentucky & Tennessee Light and Power Co. Water supply from 4 deep wells pumped to reservoir of 120,000 gals. daily by two Laidlaw-Dunn turbine air compressors. Water pumped from reservoir directly into mains, surplus going to tank pipe of 120,000 gals. cap., elevated 270 ft. One Washington elevated engine pump (28-28-16-18) cap. 150 gals. per min. One Laidlaw-Dunn-Gardner compound engine pump, cap. 100 gals. per min. One Midwest centrifugal pump, cap. 750 gals. per min. 25 miles of water pipes, 4" to 10" diam. 724 square inch triple flywheel. Pressure - Gravity 55 lbs. Direct - 30 lbs. Average daily consumption, 150,000 gals.

FIRE DEPARTMENT
 Chief Assistant Chief and 1 man fully paid. Six partly paid volunteers. Two brick fire stations. STATION #11 213 E. Broadway, One Sprague triple combination hose truck, with 40 gal. chemical tank, 100 ft. chemical hose, pump of 120 gals. cap. per min. and 1800 ft. 2 1/2 hose. STATION #12 508 W. Broadway. One international hose truck with 40 gal. chemical tank, 100 ft. chemical hose and 75 ft. 2 1/2 hose. Department fully motorized. Fire alarm by telephone.

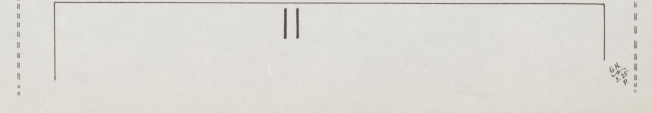
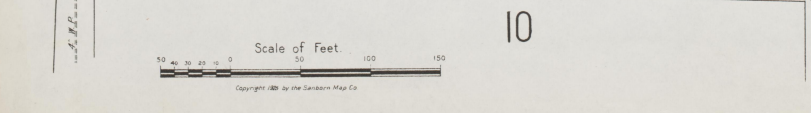
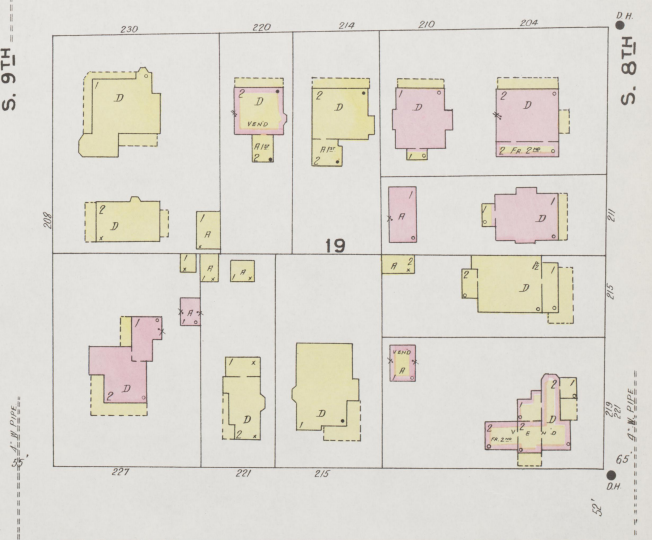
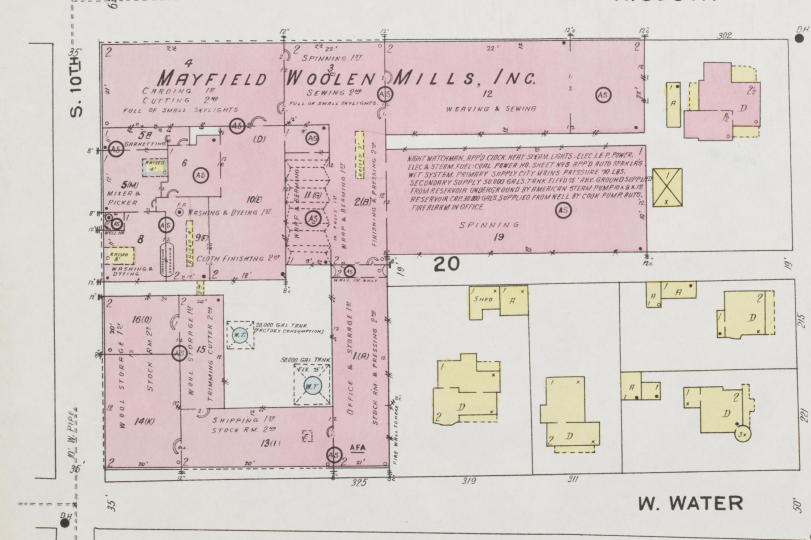
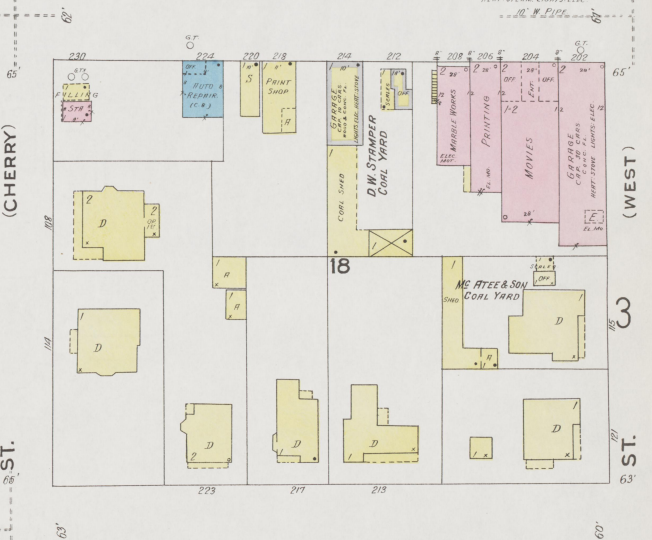
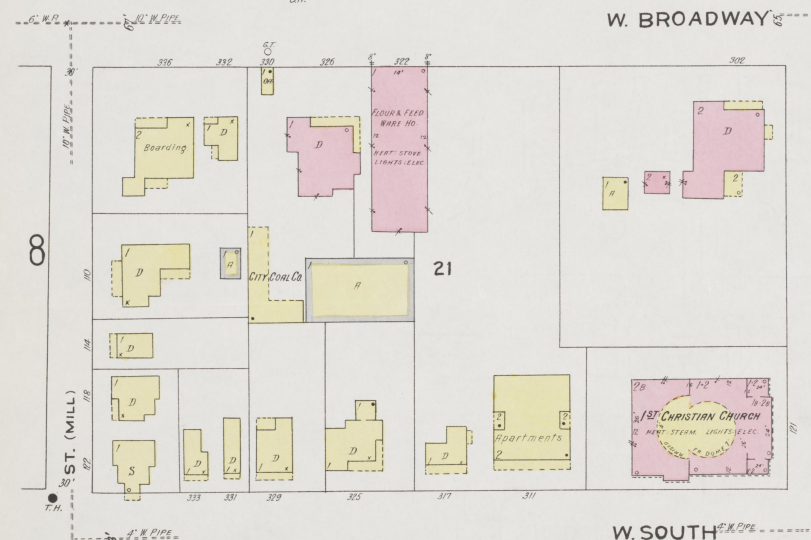
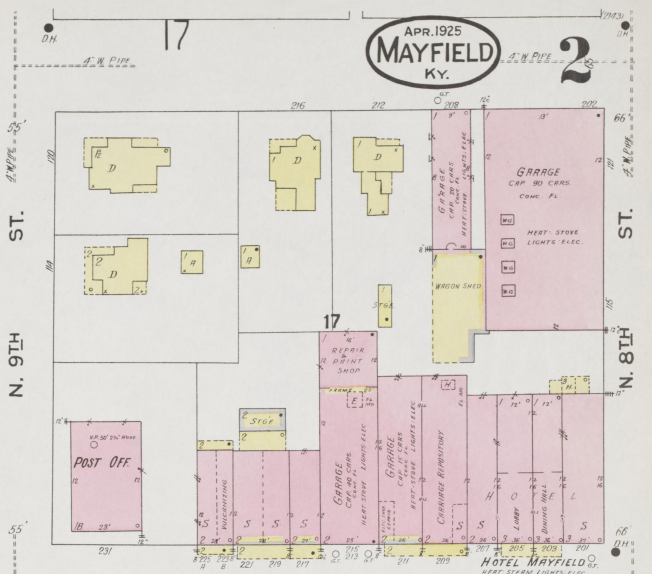
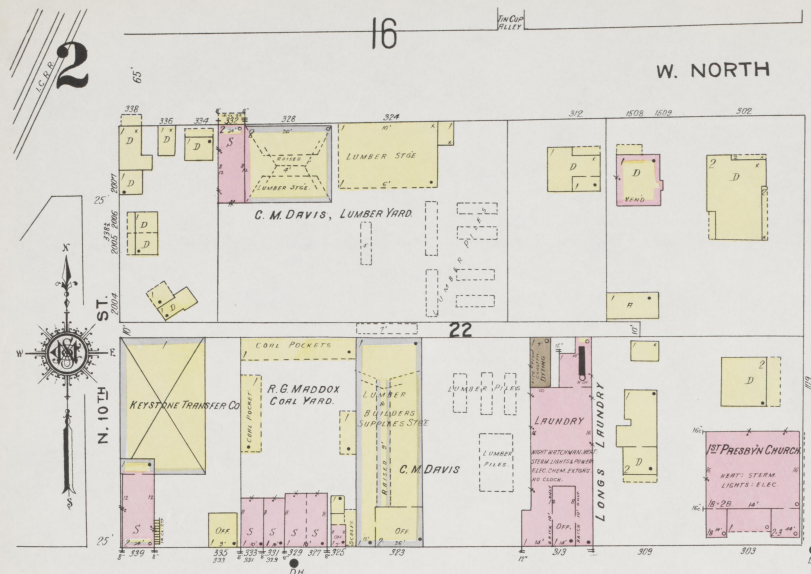
NOTE
 Alternate house numbers are actual and are those upon buildings. As a means of designation, one or more consecutive arbitrary numbers have been supplied to buildings not having actual numbers.

Scale 800 feet to one inch.

INDEX

STREETS	street	street	street	street	street
Anderson, see N. Twelfth.	100-129 18	Anderson, see N. Twelfth.	100-129 18	Anderson, see N. Twelfth.	100-129 18
Ann, E.	300-325 18	Ann, E.	300-325 18	Ann, E.	300-325 18
Arcus Court (arbitrary).	300-295 17	Arcus Court (arbitrary).	300-295 17	Arcus Court (arbitrary).	300-295 17
Bachusborough.	300-422 *20	Bachusborough.	300-422 *20	Bachusborough.	300-422 *20
Beech.	300-412 *12	Beech.	300-412 *12	Beech.	300-412 *12
Broadway, E.	100-129 18	Broadway, E.	100-129 18	Broadway, E.	100-129 18
Broadway, W.	300-412 *12	Broadway, W.	300-412 *12	Broadway, W.	300-412 *12
Butcher.	300-412 *12	Butcher.	300-412 *12	Butcher.	300-412 *12
Center, W.	300-412 *12	Center, W.	300-412 *12	Center, W.	300-412 *12
Cherry, see N. Ninth.	300-412 *12	Cherry, see N. Ninth.	300-412 *12	Cherry, see N. Ninth.	300-412 *12
Clark.	100-129 18	Clark.	100-129 18	Clark.	100-129 18
College, E.	100-129 18	College, E.	100-129 18	College, E.	100-129 18
College, W.	100-129 18	College, W.	100-129 18	College, W.	100-129 18
Depot.	500-629 16	Depot.	500-629 16	Depot.	500-629 16
Douthit.	500-629 16	Douthit.	500-629 16	Douthit.	500-629 16
Duckhorn Road, see S. Tenth.	500-629 16	Duckhorn Road, see S. Tenth.	500-629 16	Duckhorn Road, see S. Tenth.	500-629 16
Dunbar.	500-629 16	Dunbar.	500-629 16	Dunbar.	500-629 16
Eaker, see N. Thirteenth.	500-629 16	Eaker, see N. Thirteenth.	500-629 16	Eaker, see N. Thirteenth.	500-629 16
East, see N. Fifth.	500-629 16	East, see N. Fifth.	500-629 16	East, see N. Fifth.	500-629 16
Eighth, N.	100-124 *4	Eighth, N.	100-124 *4	Eighth, N.	100-124 *4
Eighth, S.	100-124 *4	Eighth, S.	100-124 *4	Eighth, S.	100-124 *4
Fancy Farm Road.	300-295 17	Fancy Farm Road.	300-295 17	Fancy Farm Road.	300-295 17
Fartling, E.	100-129 18	Fartling, E.	100-129 18	Fartling, E.	100-129 18
Fartling, W.	100-129 18	Fartling, W.	100-129 18	Fartling, W.	100-129 18
Fifth, N.	100-129 18	Fifth, N.	100-129 18	Fifth, N.	100-129 18
Fifth, S.	100-129 18	Fifth, S.	100-129 18	Fifth, S.	100-129 18
First, N.	100-129 18	First, N.	100-129 18	First, N.	100-129 18
Fourth, N.	300-325 18	Fourth, N.	300-325 18	Fourth, N.	300-325 18
Fourth, S.	300-325 18	Fourth, S.	300-325 18	Fourth, S.	300-325 18
Fuller.	100-129 18	Fuller.	100-129 18	Fuller.	100-129 18
Gardner, N. S.	300-325 18	Gardner, N. S.	300-325 18	Gardner, N. S.	300-325 18
Gardner, S. S.	300-325 18	Gardner, S. S.	300-325 18	Gardner, S. S.	300-325 18
Grove Road, see N. Fifteenth.	300-325 18	Grove Road, see N. Fifteenth.	300-325 18	Grove Road, see N. Fifteenth.	300-325 18
Hale.	300-412 *12	Hale.	300-412 *12	Hale.	300-412 *12
Hiene (arbitrary).	300-412 *12	Hiene (arbitrary).	300-412 *12	Hiene (arbitrary).	300-412 *12
Indiana Ave., E.	100-129 18	Indiana Ave., E.	100-129 18	Indiana Ave., E.	100-129 18
James, E.	100-129 18	James, E.	100-129 18	James, E.	100-129 18
James, W.	100-129 18	James, W.	100-129 18	James, W.	100-129 18
Jones.	100-129 18	Jones.	100-129 18	Jones.	100-129 18
Lee, E.	100-129 18	Lee, E.	100-129 18	Lee, E.	100-129 18
Lee, W.	100-129 18	Lee, W.	100-129 18	Lee, W.	100-129 18
Lockridge, W.	100-129 18	Lockridge, W.	100-129 18	Lockridge, W.	100-129 18
Main, see N. Sixth.	100-129 18	Main, see N. Sixth.	100-129 18	Main, see N. Sixth.	100-129 18
Maple, see N. Sixth.	100-129 18	Maple, see N. Sixth.	100-129 18	Maple, see N. Sixth.	100-129 18
Mayfield & Paris Road.	100-129 18	Mayfield & Paris Road.	100-129 18	Mayfield & Paris Road.	100-129 18
Mills, see S. Tenth.	100-129 18	Mills, see S. Tenth.	100-129 18	Mills, see S. Tenth.	100-129 18
Minden Place (arbitrary).	100-129 18	Minden Place (arbitrary).	100-129 18	Minden Place (arbitrary).	100-129 18
Ninth, N.	100-125 15	Ninth, N.	100-125 15	Ninth, N.	100-125 15
Ninth, S.	100-125 15	Ninth, S.	100-125 15	Ninth, S.	100-125 15
North, E.	100-129 18	North, E.	100-129 18	North, E.	100-129 18
North, W.	100-129 18	North, W.	100-129 18	North, W.	100-129 18
Oak.	300-412 *12	Oak.	300-412 *12	Oak.	300-412 *12
Oak Grove Road, see N. Twelfth.	300-412 *12	Oak Grove Road, see N. Twelfth.	300-412 *12	Oak Grove Road, see N. Twelfth.	300-412 *12
Palms Road, see N. Twelfth.	300-412 *12	Palms Road, see N. Twelfth.	300-412 *12	Palms Road, see N. Twelfth.	300-412 *12
Paris Road, see N. Twelfth.	300-412 *12	Paris Road, see N. Twelfth.	300-412 *12	Paris Road, see N. Twelfth.	300-412 *12
Prayer, see N. Seventh.	300-412 *12	Prayer, see N. Seventh.	300-412 *12	Prayer, see N. Seventh.	300-412 *12
Proyerson Road.	300-412 *12	Proyerson Road.	300-412 *12	Proyerson Road.	300-412 *12
Railroad Right of Way.	300-412 *12	Railroad Right of Way.	300-412 *12	Railroad Right of Way.	300-412 *12
Ridgeway, see S. Eleventh.	300-412 *12	Ridgeway, see S. Eleventh.	300-412 *12	Ridgeway, see S. Eleventh.	300-412 *12
Robertson, see N. Seventeenth.	300-412 *12	Robertson, see N. Seventeenth.	300-412 *12	Robertson, see N. Seventeenth.	300-412 *12
Second, N.	100-129 18	Second, N.	100-129 18	Second, N.	100-129 18
Seventh, N.	100-129 18	Seventh, N.	100-129 18	Seventh, N.	100-129 18
Seventh, S.	100-129 18	Seventh, S.	100-129 18	Seventh, S.	100-129 18
Sixteenth, N.	100-129 18	Sixteenth, N.	100-129 18	Sixteenth, N.	100-129 18
Sixteenth, S.	100-129 18	Sixteenth, S.	100-129 18	Sixteenth, S.	100-129 18
Sixth, N.	100-129 18	Sixth, N.	100-129 18	Sixth, N.	100-129 18
Sixth, S.	100-129 18	Sixth, S.	100-129 18	Sixth, S.	100-129 18
Tenth, N.	100-129 18	Tenth, N.	100-129 18	Tenth, N.	100-129 18
Tenth, S.	100-129 18	Tenth, S.	100-129 18	Tenth, S.	100-129 18
Thirteenth, N.	100-129 18	Thirteenth, N.	100-129 18	Thirteenth, N.	100-129 18
Thirteenth, S.	100-129 18	Thirteenth, S.	100-129 18	Thirteenth, S.	100-129 18
Third, N.	100-129 18	Third, N.	100-129 18	Third, N.	100-129 18
Third, S.	100-129 18	Third, S.	100-129 18	Third, S.	100-129 18
Walnut, E.	100-129 18	Walnut, E.	100-129 18	Walnut, E.	100-129 18
Walnut, W.	100-129 18	Walnut, W.	100-129 18	Walnut, W.	100-129 18
Washington, W.	100-129 18	Washington, W.	100-129 18	Washington, W.	100-129 18
Water, E.	100-129 18	Water, E.	100-129 18	Water, E.	100-129 18
Water, W.	100-129 18	Water, W.	100-129 18	Water, W.	100-129 18

* Indicates only one side of Street shown.



3

3



APR. 1925
MAYFIELD
Ky.



Scale of Feet
0 20 40 60 80 100 120 140 160

Copyright 1925 by the Searcy-Mas Co.

4

19

(1913)

ST. N. 6TH

ST. N. 5TH

E. NORTH

APR 1925
MAYFIELD
KY.



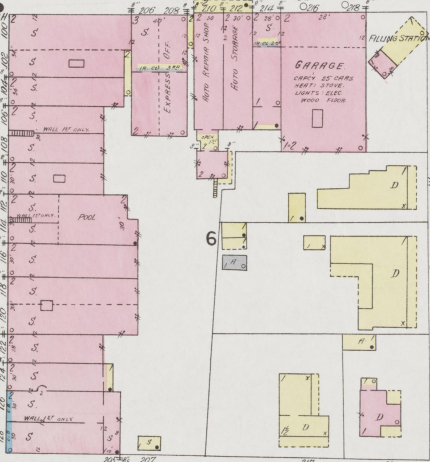
3

(MAIN)

(EAST)

E. BROADWAY

5

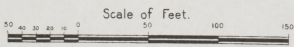
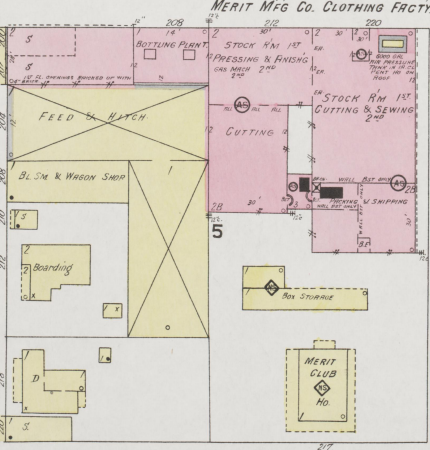


E. SOUTH

S. 6TH

S. 5TH

E. WATER



Scale of Feet.

Copyright 1925 by the Sanborn Map Co.

MERIT MFG CO

MAINT. WATERWORKS, WIND CLOCKS, HOIST, STEAM LIGHTS, ELEVATORS, POWER PLANT, WIND TURBINES, IMPROVEMENTS, GAS SYSTEM, PRIMARY SUPPLY, 6000 GAL. AIR PRESSURE, W. T. CO. WIND TURBINE, CITY WATER, 40" DIAM. PIPE, 85 LBS. PRESS. 1/2" EXPOSED.

12

13

S. 5TH

5
19

5
1749

APR. 1925
MAYFIELD
KY.



Scale of Feet.
50 100 150
Copyright 1925 by the Sanborn Map Co.

6

N. 16TH ST.

22

APR 1925
MAYFIELD
KY.

6

(242)

W. BROADWAY

22

138

140

W. WATER

W. WATER

139

75

7

W. WATER

6

75

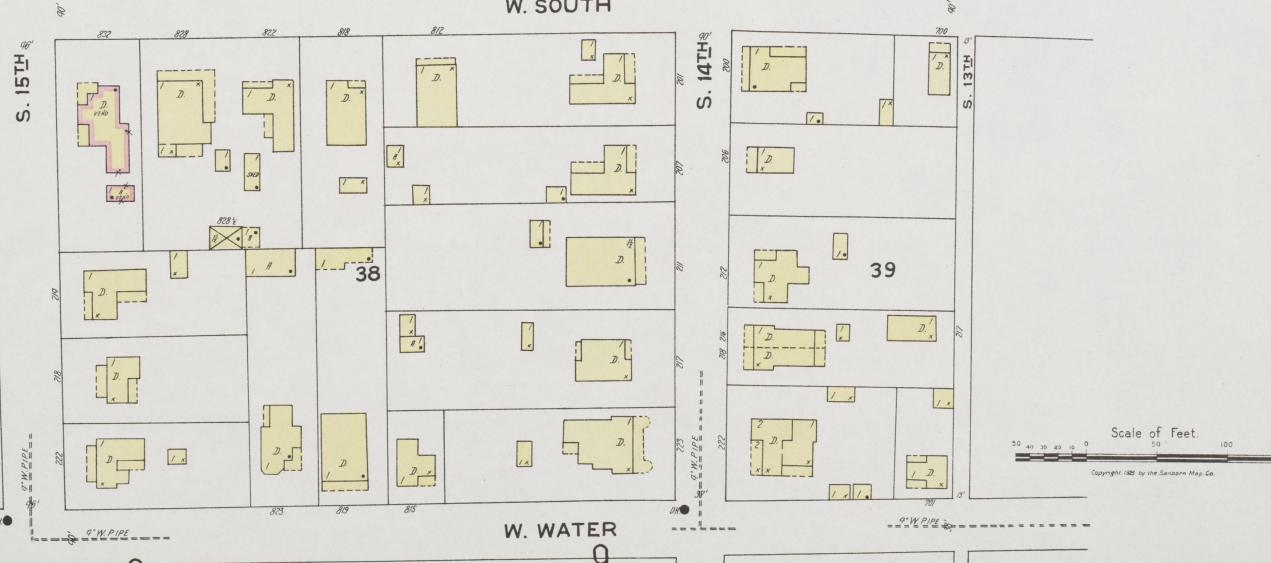
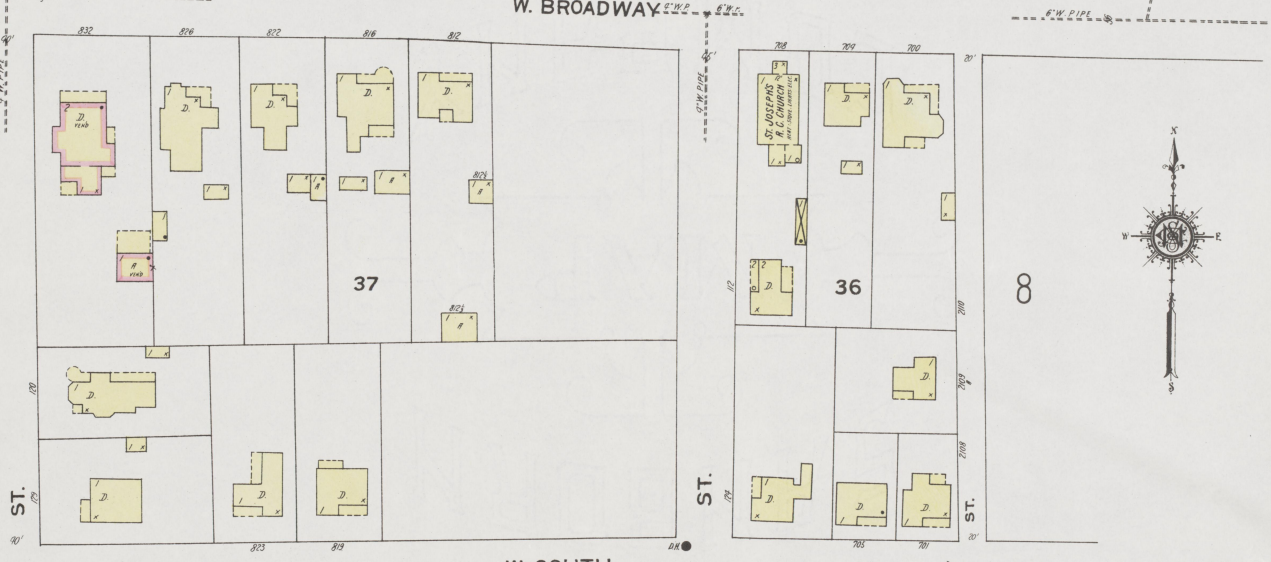
6

9



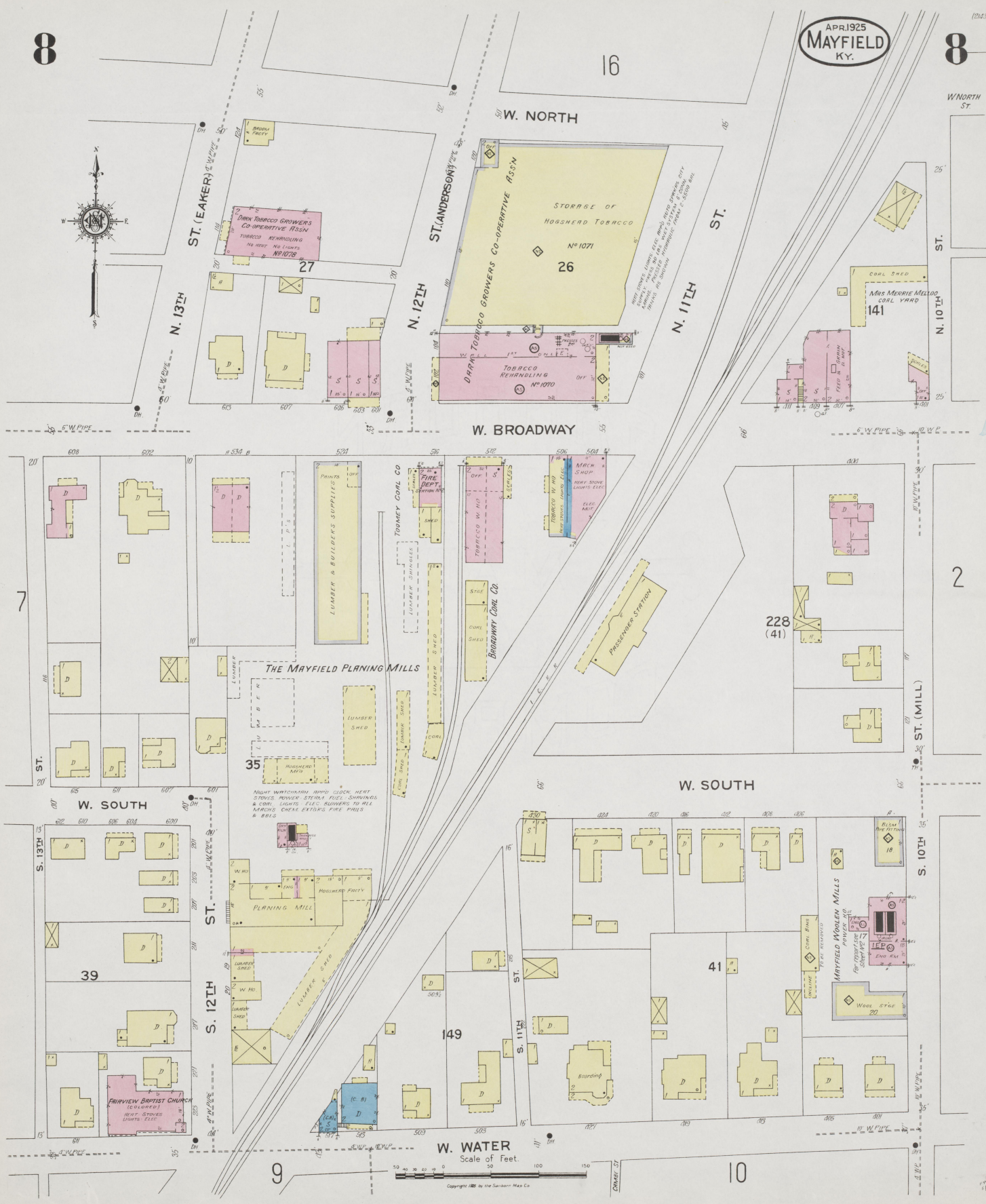
7

7

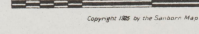


6

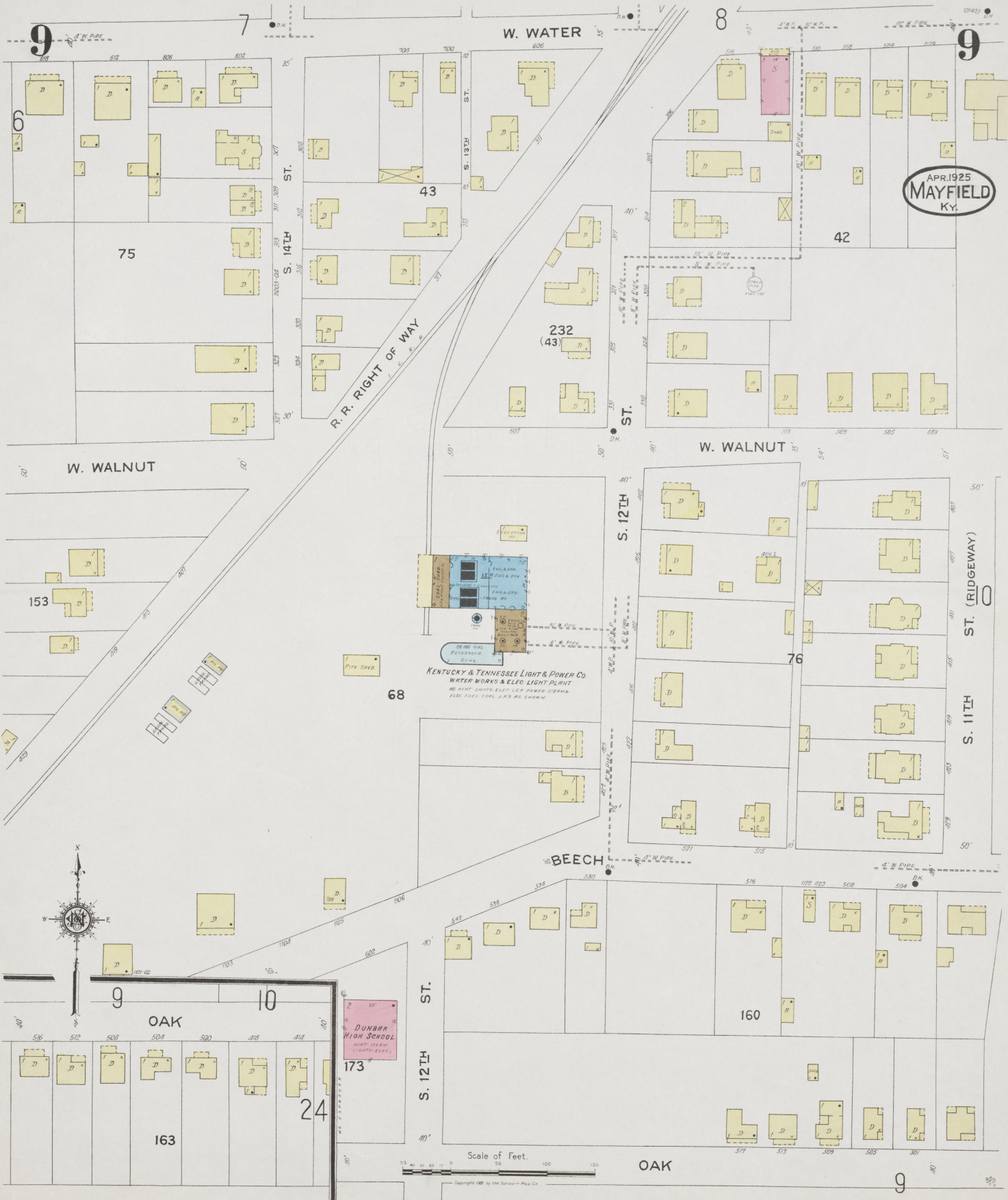
9



W. WATER
Scale of Feet.



Copyright 1925 by the Sanborn Map Co.

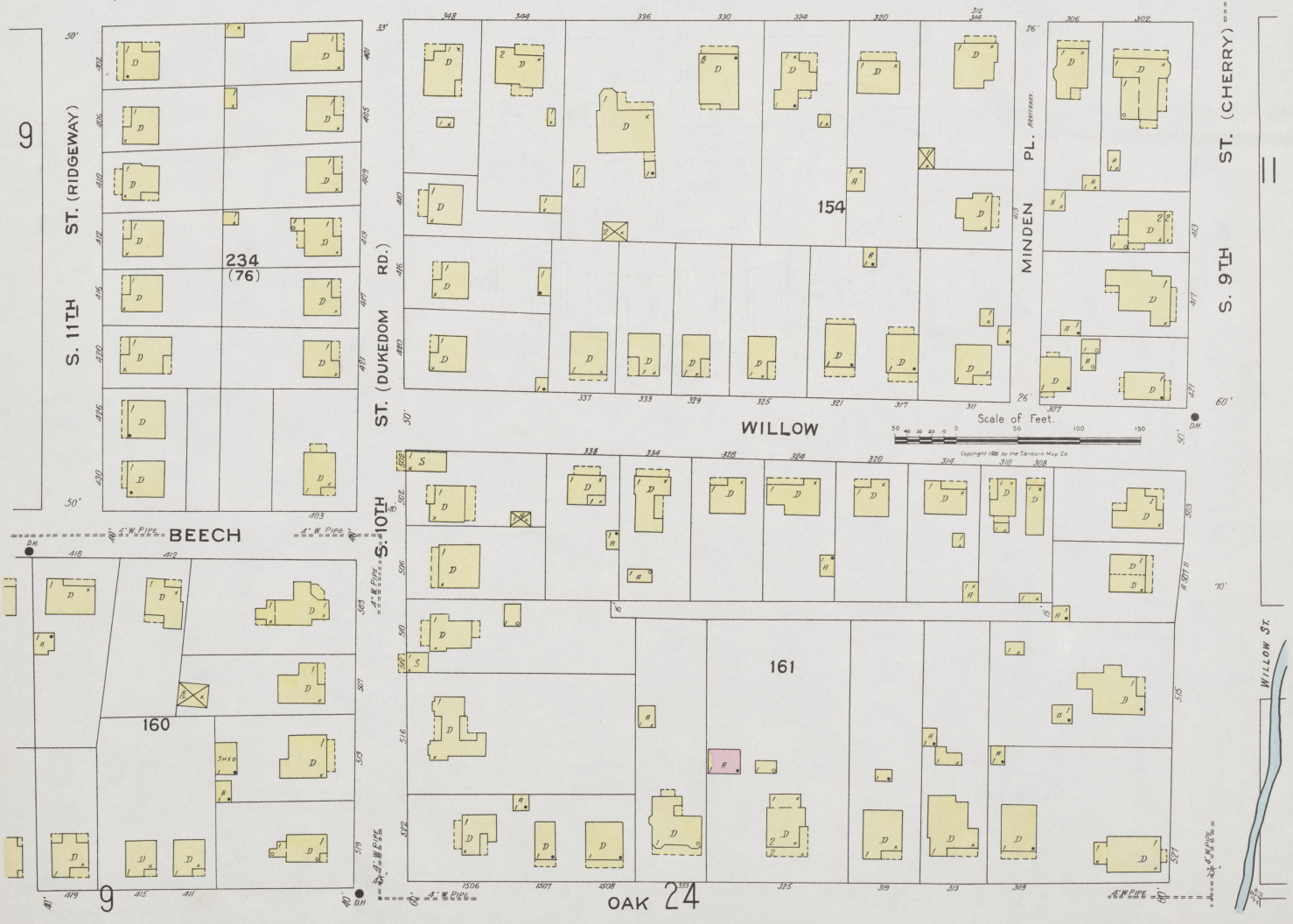


APR. 1925
MAYFIELD
KY.

KENTUCKY & TENNESSEE LIGHT & POWER CO.
WATER WORKS & ELEC LIGHT PLANT
NO. 1127 LIGHTS ELEC. LINES POWER STERNS
ELEC. FUEL COIL. 2.5'S BE SHOWN

Scale of Feet.

Copyright 1925 by the Standard Map Co.



11

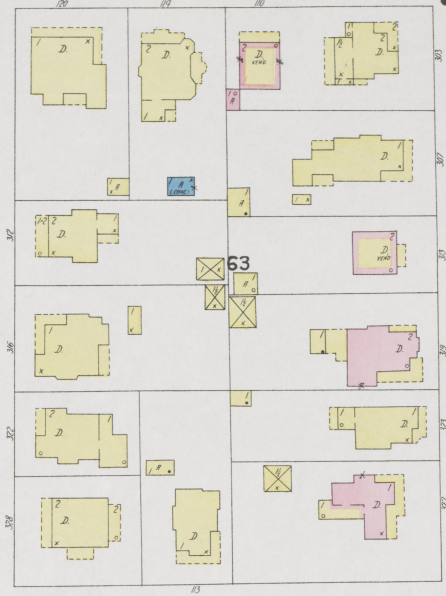
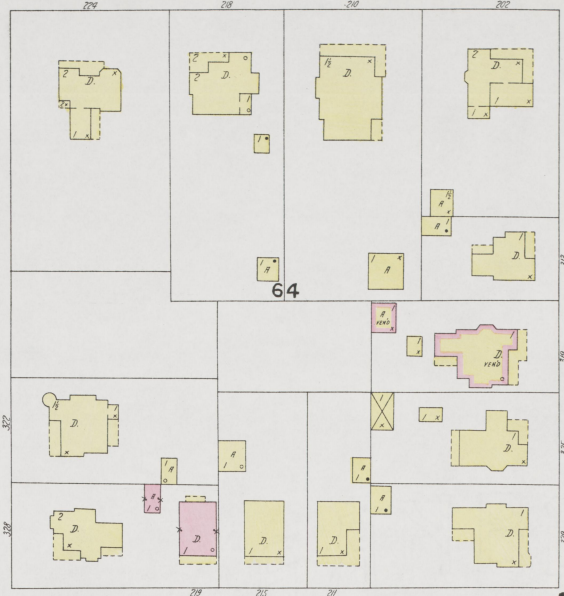
2

W. WATER ST.

3

11

APR 1925
MAYFIELD
KY.



W. WALNUT ST.

10

ST. (CHERRY)

S. 9TH

65

A.M.E. CHURCH

ST. (WEST)

S. 8TH

62

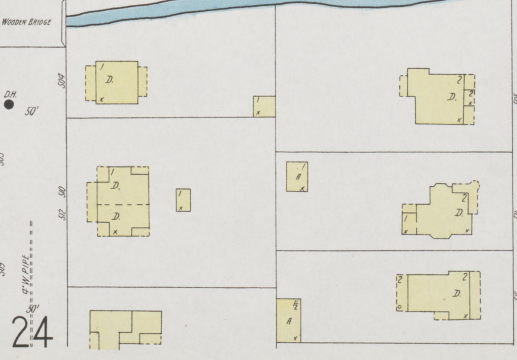
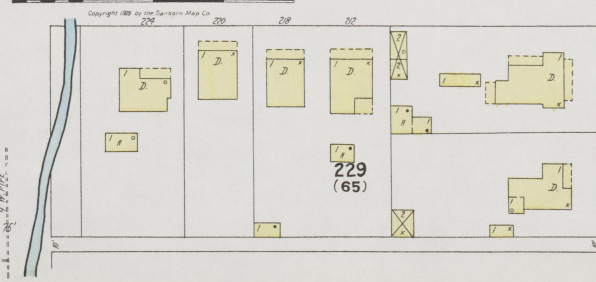
ST. (PRAIRIE)

S. 7TH

12

Scale of Feet. 0 50 100 150

WILLOW



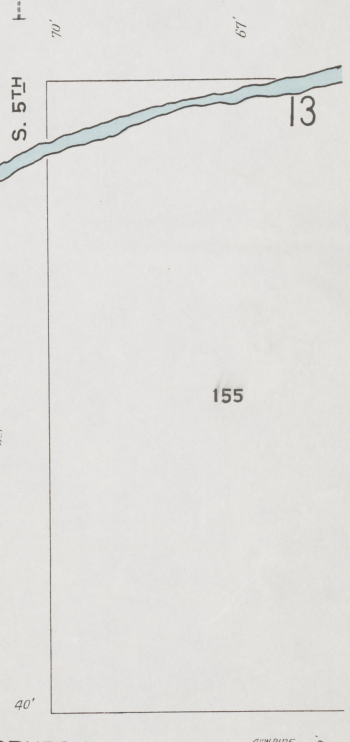
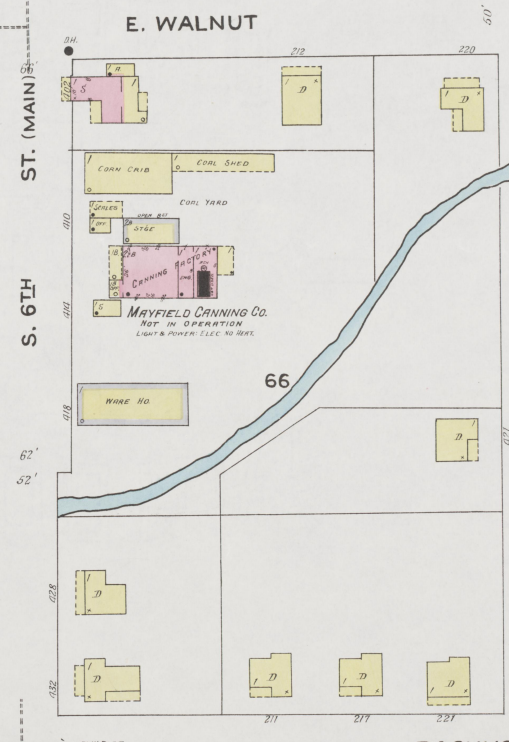
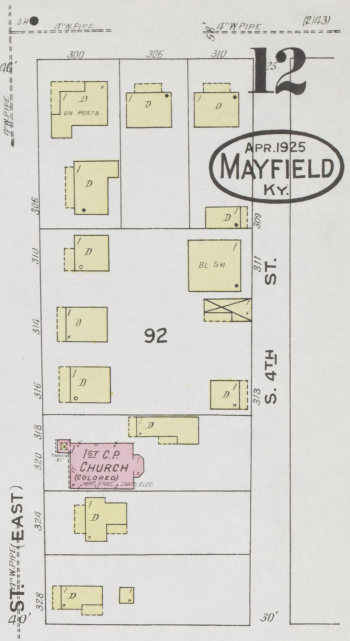
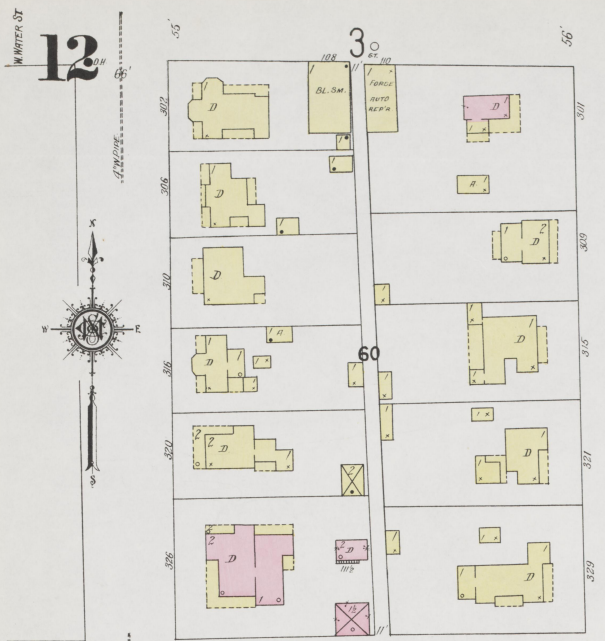
24

WILLOW ST.

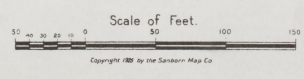
ORP ST.

ORP ST.





APR. 1925
MAYFIELD
KY.



13

4

5

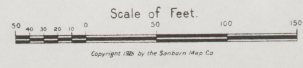
APR. 1925
MAYFIELD
KY.

13

E. WATER

E. WALNUT

BACHUSBURGH



14

5

233 (2143)
14

APR. 1925
MAYFIELD
Ky.

W. WATER

TICE RD.

152



ST. 1ST S.

13

158

PRYOR

159

X. B. WICKERSHAM BRICK CO.
 NIGHT WATCHMAN, NO CLOCK HERE
 LIGHTS, ELEC. POWER, ELEC. FLOOR, WIND & CHIM.

CLAY SHED
 BRICK MACHINE
 BRICK SHED
 LIME & CEMENT WARE HO.
 S. 16TH ST.

PRYORSBURG RD.

162

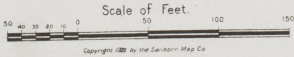
152

TICE RD.

BACHUSBURGH

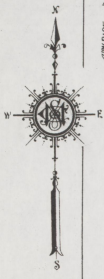
172

25



Copyright 1925 by the Seaboard Map Co.

15



23

15

(21423)

APR 1925
MAYFIELD
KY.

W. WASHINGTON

77

DUNBAR

78

W. RIDGEWAY (TOBACCO)

34

DARR TOBACCO GROWERS CO-OPERATIVE ASSOCIATION
STORAGE OF HOGSHEAD TOBACCO
HEAT STOVE LIGHTS ELEC.

TOBACCO WARE HO.
HEAT STOVE LIGHTS ELEC.

30

DEPOT

79

M BREWER
TOBACCO W. HO.

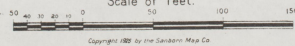
LIBON BROS.
TOBACCO WARE HO.
HEAT STOVE LIGHTS ELEC.

R.D. ROBERTSON - OWNER
H.D. FARLEY - LESSEE
TOBACCO WARE HO.
HEAT STOVE NO LIGHTS

W. NORTH

7

Scale of Feet.



Copyright 1925 by the Standard Map Co





GARDNER
226
(24 1/2)

DUNBAR ST

TIN_CUP ALLEY

23

ST. (CHERRY)
N. 9TH

N. 9TH

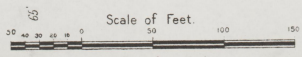
ST. (CHERRY)
N. 9TH

227
(33 1/2)

ST. (WEST)
N. 8TH

W. ANN

W. NORTH

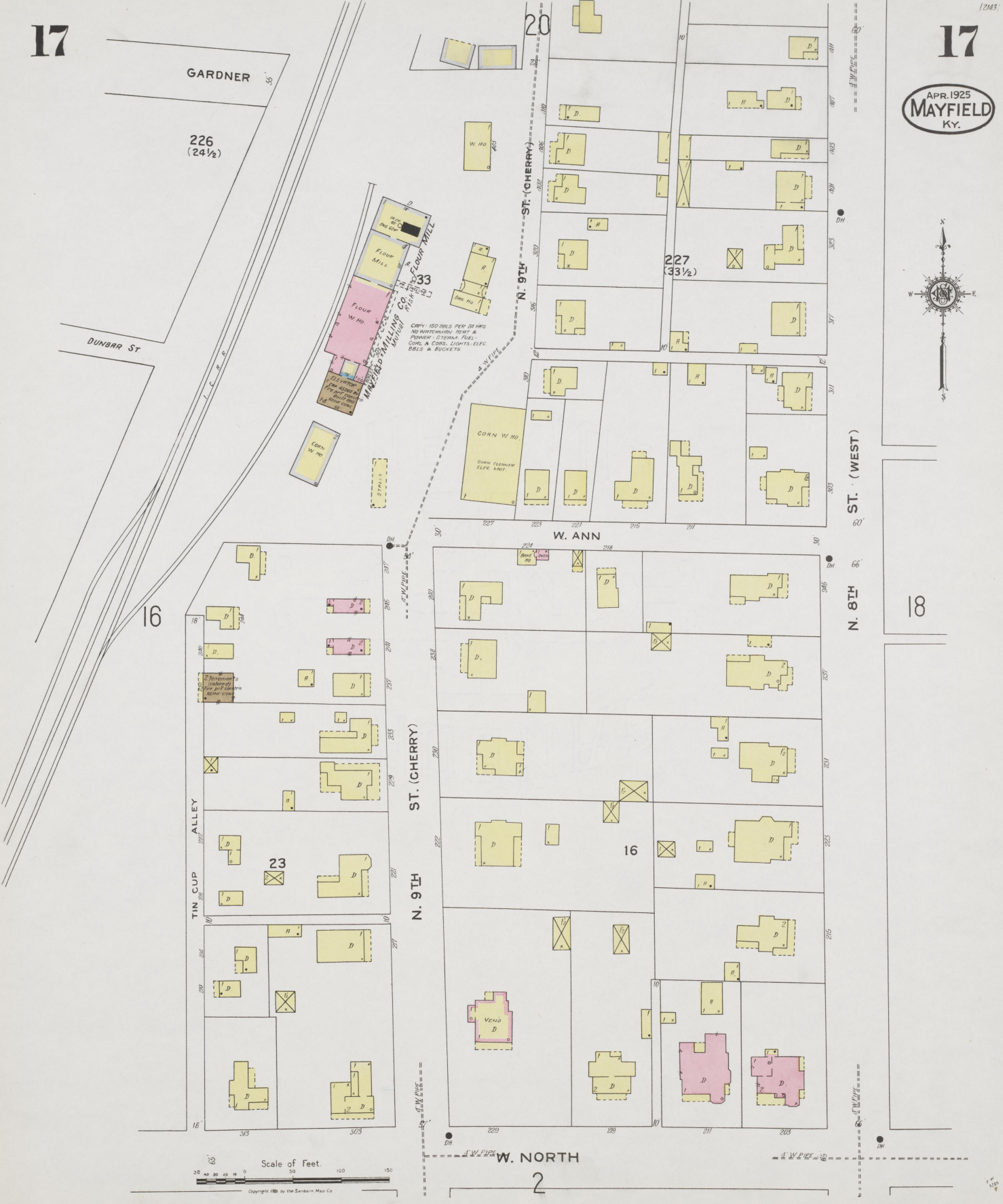


Copyright 1925 by the Sankin Map Co

APR. 1925
MAYFIELD
KY.



(2145)



APR. 1925
MAYFIELD
KY.



17

19

N. 8TH ST. (WEST)

N. 7TH ST. (PRAIRIE)

N. 6TH ST.

W. NORTH

E. NORTH

Scale of Feet.

Copyright 1925 by the Sanborn Map Co.

19

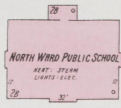
21

205

142

19

APR. 1925
MAYFIELD
KY.



E. INDIANA

AV.



86

87

ST. (MAIN)

ST. (EAST)

E. ANN

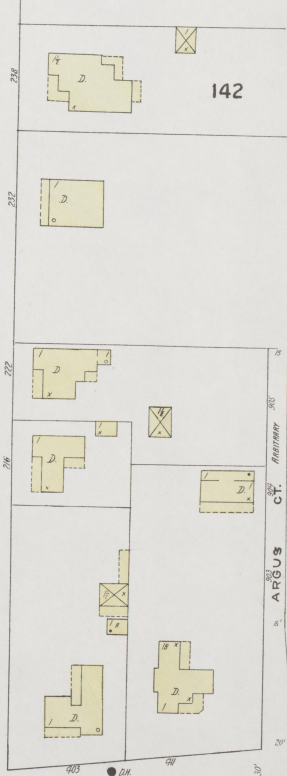
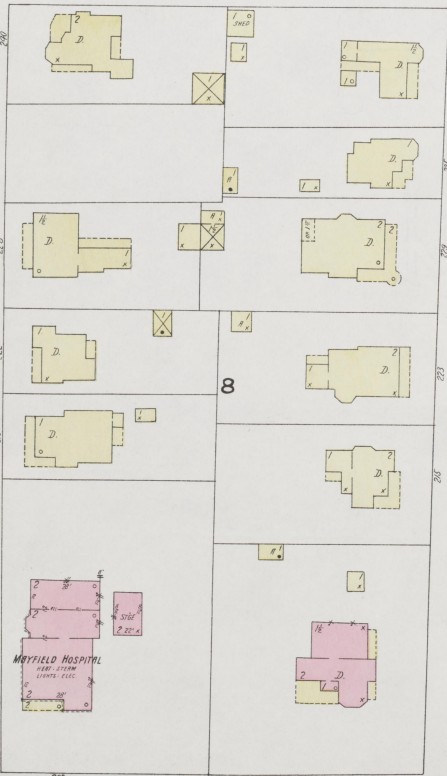
ST. (N. 3RD)

N. 4TH

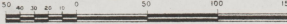
142

8

1



Scale of Feet.



Copyright 1925 by the Searborn Map Co.

E. NORTH

4

5

20

23

20

APR. 1925
MAYFIELD
KY.

W. LOCKRIDGE

110

111

81



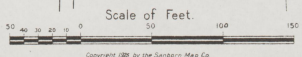
ST. (WEST)
N. 8TH

21

**ARTHUR B JARVIS
TOBACCO RE-HANDLING**
HEAT - STEAM W. STONE POWER;
STEAM FUEL OIL; LIGHT GAS;
ELECTRICITY SUPPLIED BY CITY;
WATER SERVICE & SEWER SYSTEMS.

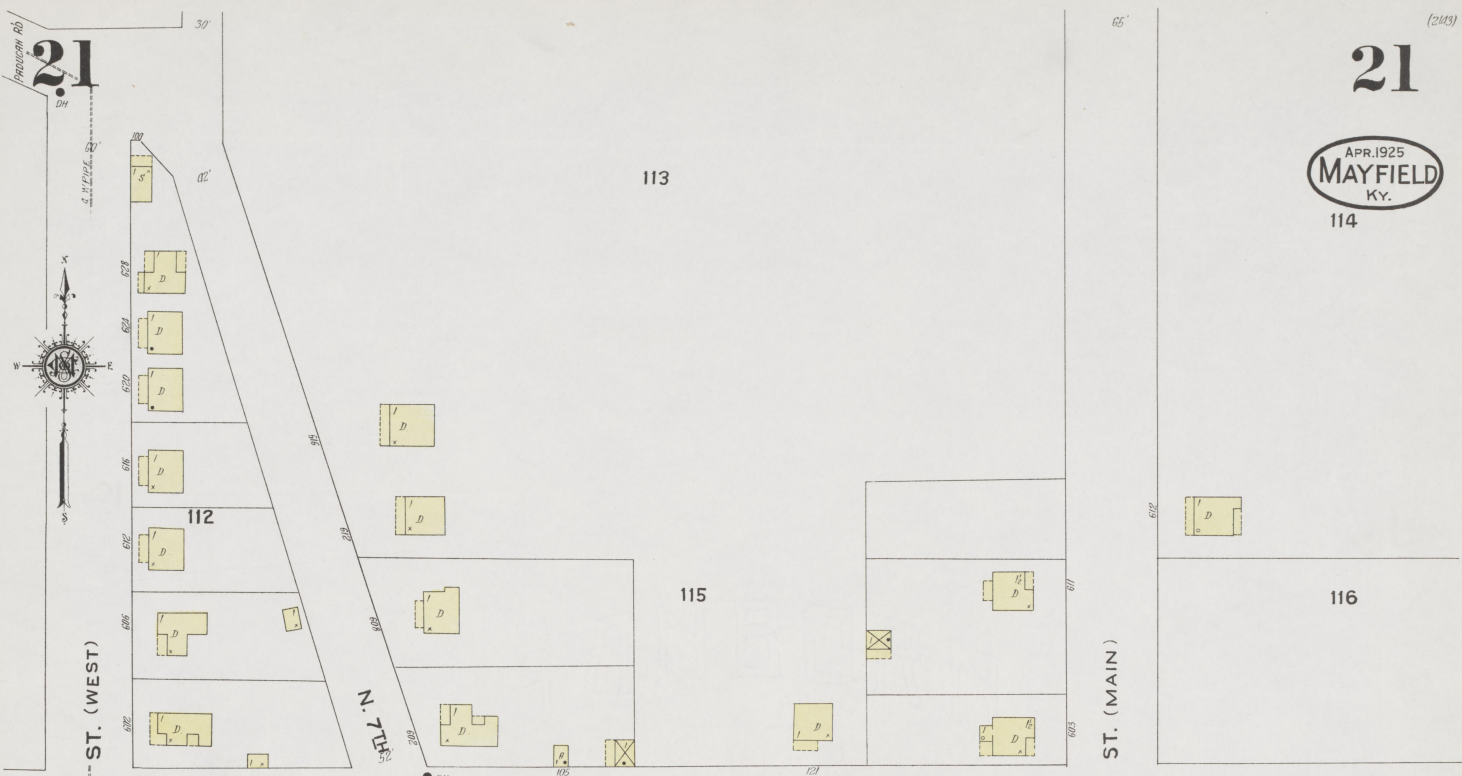
**MAYFIELD COAL & ICE CO.
ICE FACTORY**
COMPRESSION SYSTEM
WATERWORKS SUPPLIED UNDER
RAIL-STEAM OR OIL POWER
STEAM FUEL OIL; LIGHT GAS;
ELECTRICITY SUPPLIED BY CITY;
ELECTRICITY SERVICE.

MAYFIELD SWIMMING POOL
BATHS
BATHS



Scale of Feet.

Copyright 1925 by the Sanborn Map Co.



20 W. LEE E. LEE



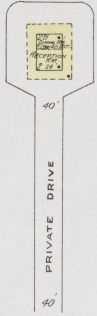
W. JAMES ST. N. 6TH ST. E. JAMES



Scale of Feet 0 50 100 150 Copyright 1925 by the Standard Map Co.

22

MAYFIELD COUNTRY CLUB INC.
HARRY FORD LIGHTS, ETC.
CONTRACTOR LINDSAY OF PHOENIX, ARIZ.
EX-1925



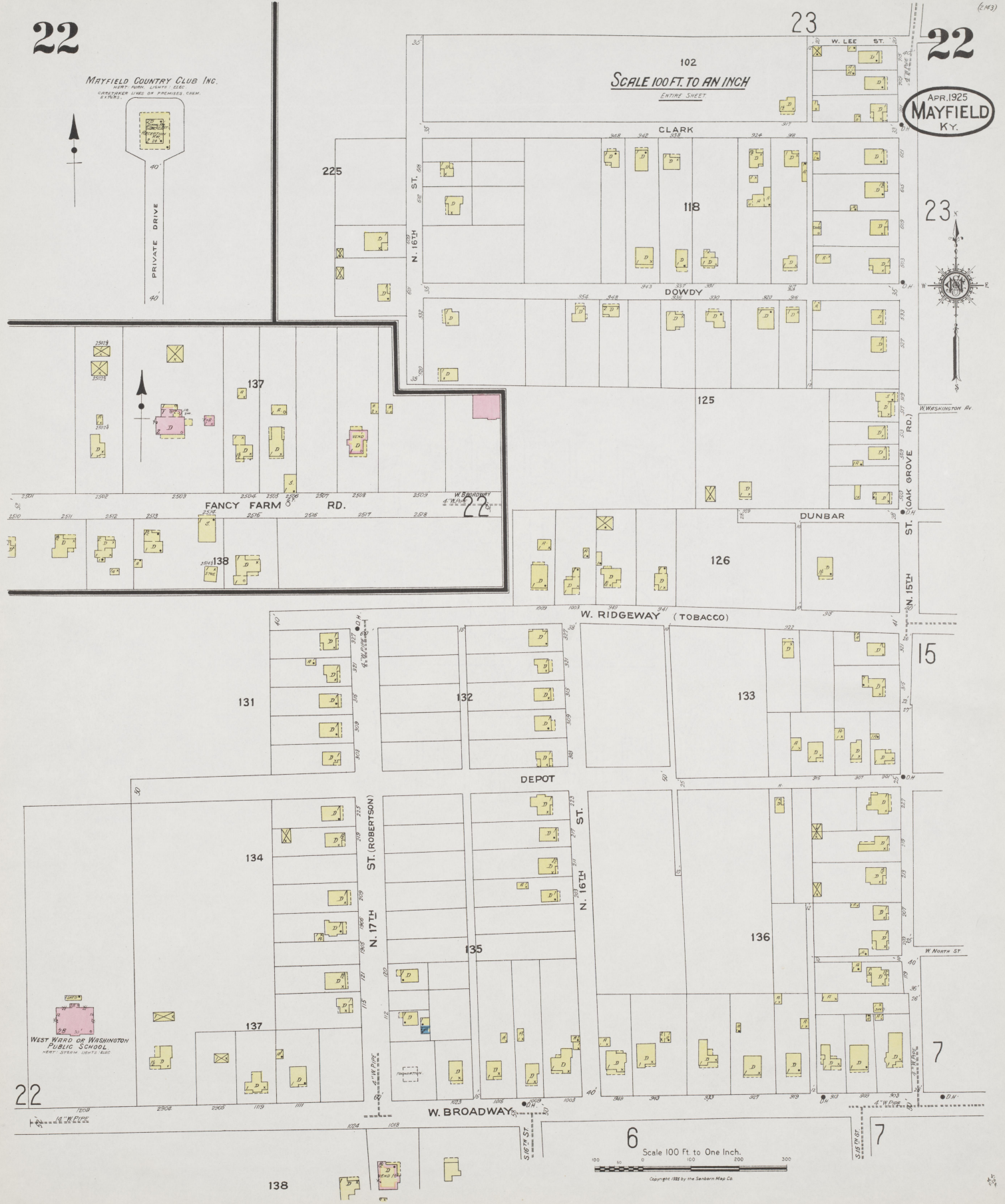
23

22

SCALE 100 FT. TO AN INCH
ENTIRE SHEET

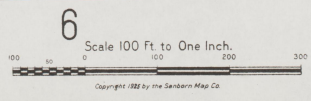
APR. 1925
MAYFIELD
KY.

23



22

7



6
Scale 100 Ft. to One Inch.

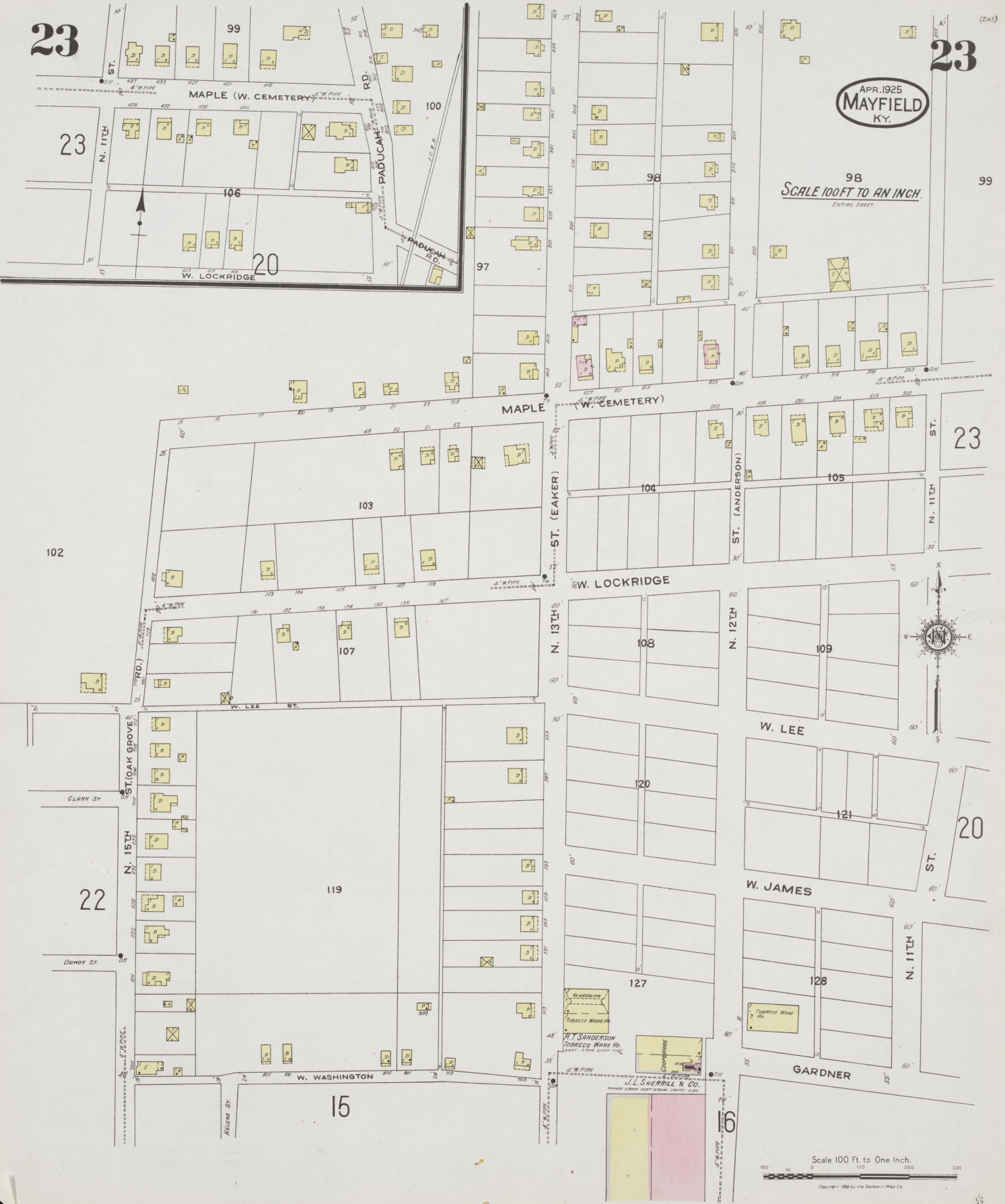
Copyright 1925 by the Sanborn Map Co.

23

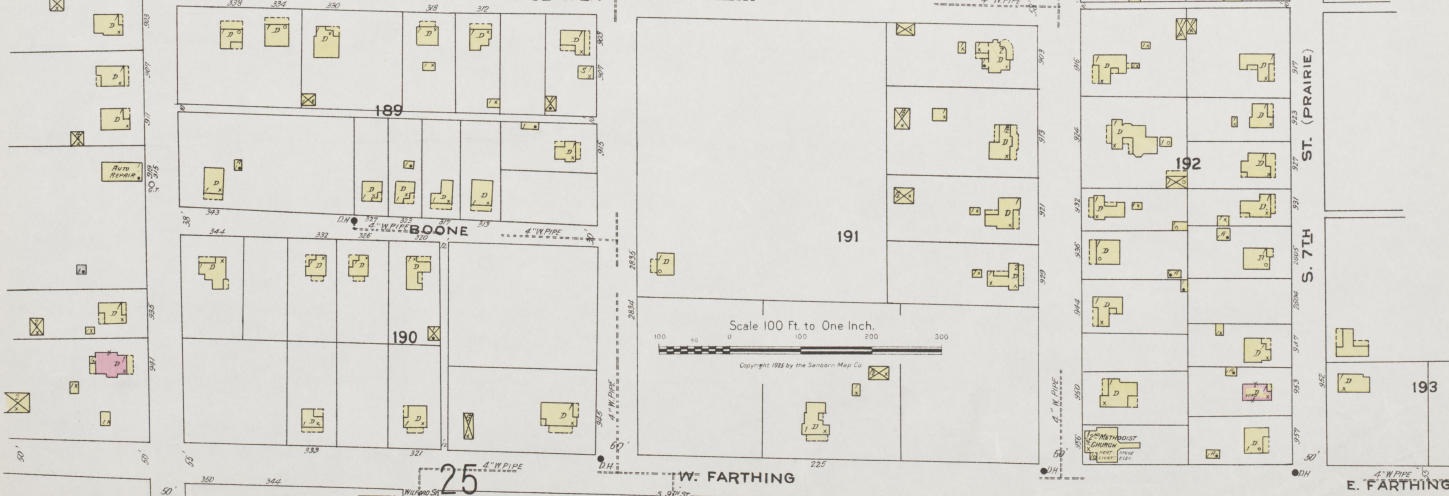
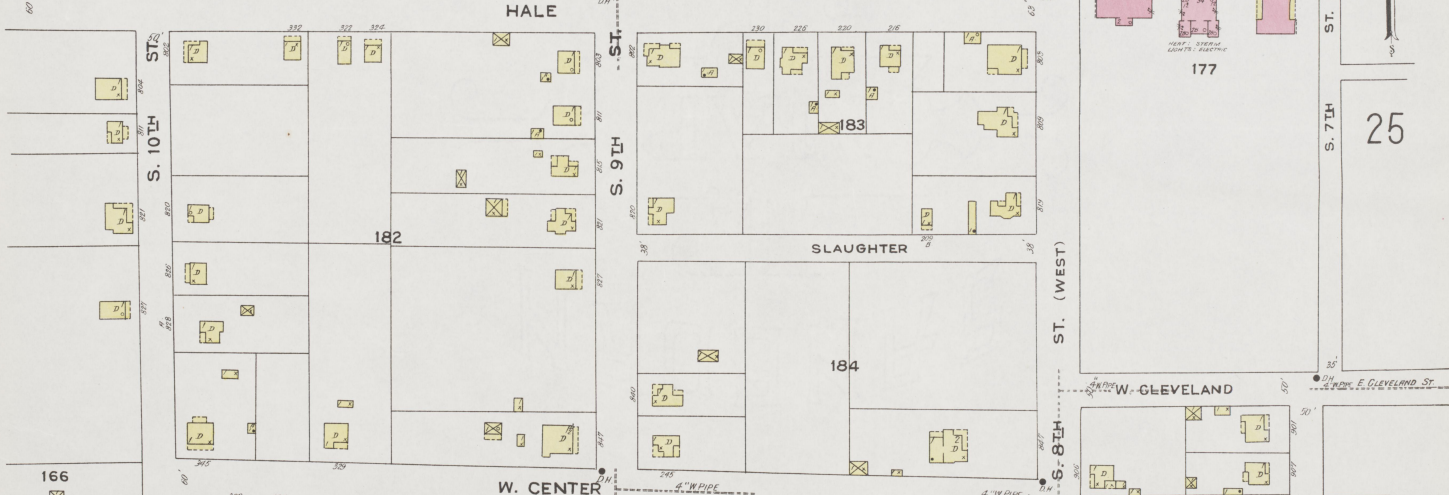
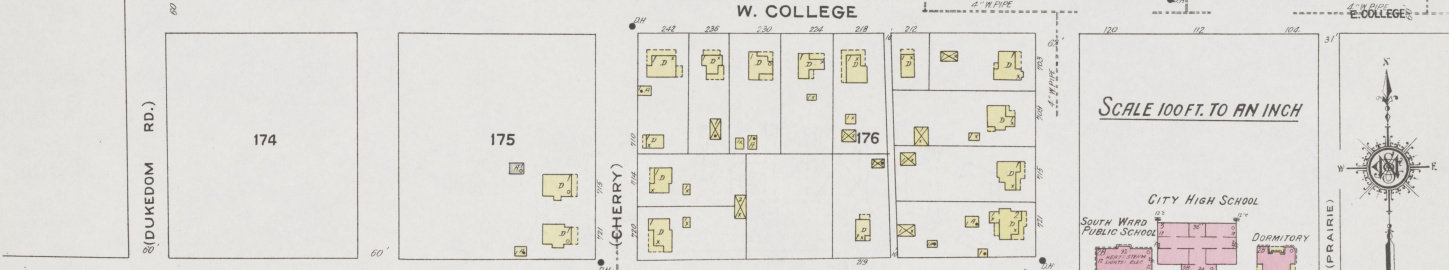
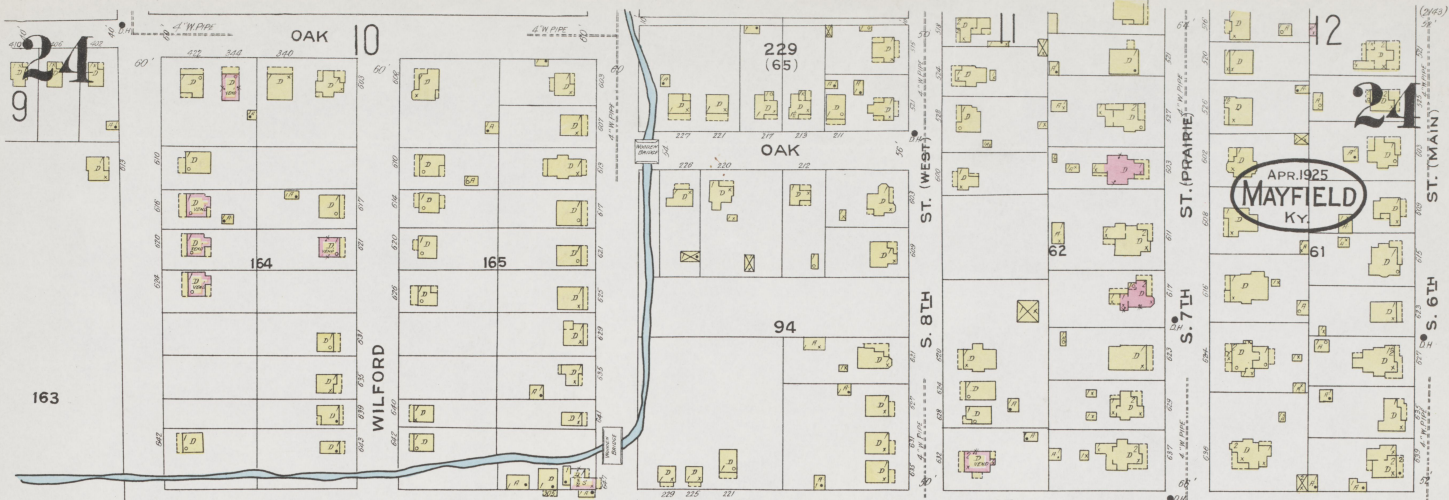
23

APR. 1925
MAYFIELD
KY.

98
SCALE 100 FT TO AN INCH.
ENTIRE SHEET



Scale 100 Ft to One Inch.
Copyright 1925 by the Searborn Map Co.



25

25

APR. 1925
MAYFIELD
Ky.

SCALE 100 FT. TO AN INCH

BACHUSBURGH

E. COLLEGE

JONES

DOUTHIT

WILFORD

FULLER

ST. (MAIN)
S. 6TH

ST.
S. 3RD

ST.
S. 2ND

ST. (EAST)
S. 5TH

ST. (CHERRY)
S. 9TH



Scale 100 Ft to One Inch
Copyright 1925 by the Sanborn Map Co.