

Gable addresses students; discusses campaign issues

By JOHN WINN MILLER
Assistant Managing Editor

"Hi, I'm Bob Gable and I'm running for governor."

The startled students in the Student Government office looked up from their desks as the Republican candidate swept into the room Tuesday afternoon.

Like a true politician Gable shook hands with each person and engaged in casual small talk. "Don't I know your uncle," and "It's too bad you joined the wrong party," were frequently repeated by Gable.

Once the social amenities were over the 41-year-old Gable plopped wearily into a couch. The effects of a strenuous speaking schedule were beginning to show. It was only 2 p.m. but he had already completed two speaking engagements and was on his way to a newspaper interview.

For the last hour Gable had been addressing more than 50 students in the Student Center. Clad in a conservative dark suit, he briefly presented an extemporaneous speech and then answered questions from the audience.

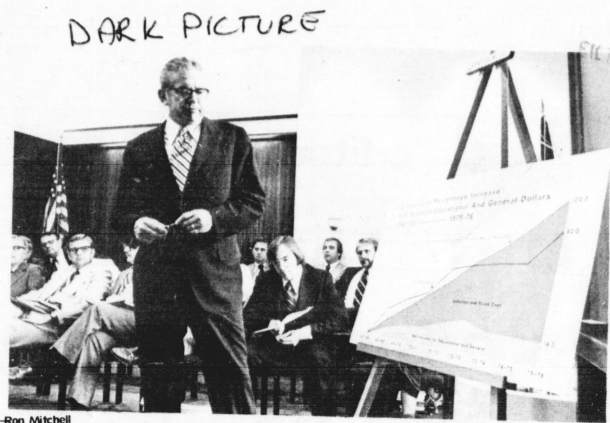
Now, slumping in the couch, his voice no longer had the round, pear-shaped tones of a public speaker. His tone had changed from the jovial politician to the cautious candidate talking to the press.

"I'm definitely against busing," he said. "Even if there are no better alternatives, busing should be eliminated."

During his speech, Gable was challenged on busing by a black student in the audience. It had been the only tense moment in an otherwise calm and passive talk. Not losing his composure for a second, Gable justified his stand by saying busing wasn't worth the trouble.

"Busing is counterproductive because it detracts from the quality of education. I personally favor neighborhood schools so kids don't have to be bused," Gable told the receptive audience. "The real solution is to increase financial support for schools and not to have the students spend eight to 10 years busing to different schools."

In the quiet of the SG office he elaborated further on how busing is counterproductive. "The state is spending



Ron Mitchell
Republican candidate for governor (right) Bob Gable, addresses about 50 students in the Student Center Tuesday.

over \$3 million on busing which could be better used to improve the quality of schools. Plus it wastes gas which we are supposed to be conserving."

Hungrily eyeing a student's hamburger, Gable repeated his recent attack against Gov. Julian Carroll's "rule by fear and intimidation." Gable said if he was elected he would "replace paranoia and egomania with reason and a sense of humor."

When a student asked bluntly what positive programs he would instigate if elected, Gable said: "I put out five white papers this summer which clearly outline my suggestions for programs and legislation."

Attempting to be more specific, Gable said he believed excess state funds which, according to him, total over \$300 million —

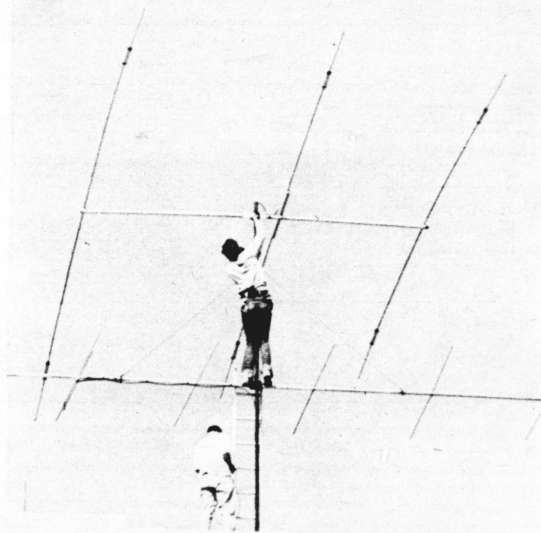
Continued on page 3

KENTUCKY Kerhel

Vol. LXVII, No. 46
Wednesday, October 8, 1975

an independent student newspaper

University of Kentucky
Lexington, Ky. 40506



Precarious perch

The fear of heights apparently does not bother two workmen as they repair an antenna on top of Anderson Hall Monday.

Board of Trustees approve biennial budget request

By BRUCE WINGES
Editor-in-Chief

A budget request of nearly a half billion dollars for the 1976-78 biennium was approved by the Board of Trustees Tuesday.

The 1976-78 biennial budget request of \$402.5 million represents a \$108.1 million increase over the 1974-76 biennial budget request of \$294.4 million.

The increase is necessary because of current inflation and enrollment increases, President Otis A. Singletary said. The budget request is approximately 60 per cent less than original University college and department requests, he added.

Under the biennial request, the total University budget for 1976-77 is \$191.5 million. This figure is a \$49.1 million increase over the 1974-75 budget request.

The biennial request sets the 1977-78 UK budget at \$211.1 million. This figure

represents a \$58.5 million increase over the 1975-76 budget request.

State appropriations in the biennial request are less than half of the total budget, Singletary said. The rest of the budget comes from sources other than state monies, he added.

"There is an important difference between the total budget and how much the state puts in," Singletary said.

State appropriations for the 1975-76 budget were \$81.3 million. The 1976-77 budget requests \$93.2 million in state funds, an \$11.9 million increase over 1975-76. The 1977-78 budget requests an additional \$12.7 million in state funds, for a \$24.6 million state appropriations increase.

A 10 per cent average salary increase for University employees is included in the budget request for each year of the biennium.

Continued on page 8

Senate Council ranks proposed grad programs

By NANCY DALY
Assistant Managing Editor

The Senate Council Tuesday ranked by priority five proposed graduate programs being considered by the state Council on Public Higher Education (CPHE).

The priority list, with the first considered to have the highest priority, is as follows:

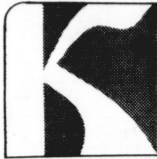
1. PhD in philosophy
2. masters in forestry
3. masters in teaching (mathematics)
4. PhD in health, physical education and recreation (HPER)
5. masters in planning

The list will be forwarded to President Otis A. Singletary, who will send CPHE his own ranking recommendation.

CPHE requested priority rankings to determine which programs are most essential or expendable in case any must be rejected because of financial constraints.

The Senate Council — the University Senate's administrative arm — ranked the programs at a luncheon meeting which had been postponed last Friday because of lack of quorum.

Continued on page 3



editorials

Letters and Spectrum articles should be addressed to the Editorial Page Editor, Room 114 Journalism Building. They should be typed, double-spaced and signed. Letters should not exceed 200 words and Spectrum articles 750 words.

Editorials do not represent the opinions of the University.

Bruce Wings
Editor-in-Chief

Ginny Edwards
Managing Editor

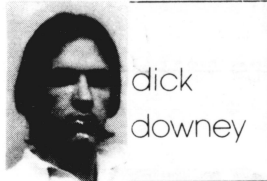
Susan Jones
Editorial Page Editor

Jack Koeneman
Associate Editor

Farming deserves better treatment

This week's column is about farmers and the work they do. I know, I know, the subject is as dull as dish-water to most people. In fact, the blandness of the trade can be equated in most people's minds only to the inherent boredom associated with activities like watching the grass grow and reading legal treatises on corporate securities regulation, or anything else that tends to similarly bedraggle the spirit and stifle the imagination.

But that's why I picked farmers and farming for this week's topic. The subject does, after all, deserve better treatment than it usually gets in the media—if you've ever suffered through Channel 18's daily evening farm report, you unfortunately probably know what I mean. It's dull, dull, dull! So what if feeder calves had a good week at the market? Who cares if shoats have gone up a nickel over the last half of September?



dick
downey

Most farmers are concerned, of course, but I suppose that the rest of us aren't. Hell, we don't even understand, much less care about, tobacco price supports, the Chicago Board of Trade, rural land-use planning and the risks involved in a possible nitrogen shortage, or any of that farm stuff for that matter.

Which is exactly the point. Agriculture is the forgotten endeavor of America, the misplaced metaphor of a nation's greatness. Once considered the backbone of a sound society, farming is now relegated to an obscure importance in the collective consciousness of the country. In fact, not only do most of us not give a damn about it any more, many of us also sometimes give in to the temptation of thinking of farmers as being no more than dirt-daubing semi-illiterates who work the land because they haven't got enough sense to do anything else except provide us with our bread daily.

Which never has made much sense to me; I'm too scared to think such a thing. Why? It's easy. Farmers control the ultimate source of the world's basic energy source, food! I mean, where does your food come from after all? The cafeteria and the supermarket? No, wrong, wrong, wrong! Food comes from farms! It seems to me that too many people in this day and age forget the true source of their energy. They forget to look past the store counters and the meat lockers to the origin of their nourishment—farms.

As a result, the problems of farmers are often lost in the shuffle of the multiplicity of problems that face all of us daily. We are just not farm-conscious at all, not even that least little bit.

As a result, we tend to forget (or never

discover) some of the difficulties that beset farmers—things like the rising costs of land, machinery, fertilizer, labor, storage equipment for grains and fuel. And then we bitch because wheat goes up two cents a bushel. Or we complain about the price of meat and blame it on the farmers when often they are at the same time losing as much as \$100 per head of cattle and the middlemen are splitting a \$250 profit on that same cow (and I have the figures to back that up). Things have gotten awful tough for the small farmer, folks.

'Agriculture is the forgotten endeavor of America...'

Sometimes I don't wonder if the Arab countries' oil cartel might not pale in comparison to the potential havoc that a large group of farmers, angry at the lack of public understanding of their problems, could wreak on the country and world by a militant withholding of their commodities from the consuming market.

Consider this: well over one-half of the food produced in this country comes from less than ten per cent of its farmers. It is not irrational to speculate on the muscle that could be employed by farmers who, convinced that politics in America have forsaken them, decide to return the favor by bringing their complaints on the agricultural issues to the very real forum of the dinner table in order to get more positive action out of the political process.

If you understand farmers at all, you will understand that such a drastic measure isn't likely to happen simply because they are such an independent and individualistic breed of people. But imagine the energy crisis that would result from a food embargo by the agricultural industry! What a plethora of possibilities! A carbohydrate shortage could be instigated by the potato farmers; dairy-products producers might start a calcium crisis; meat people could scare the protein out of everybody but the vegetarians by refusing to send livestock to the market (the vegetarians might get theirs, too, if produce wasn't sold); and finally, tobacco growers could drive the remaining vestiges of unsympathetic Americans to the brink of frenzy by creating the biggest nicotine fit that the world has ever seen.

All of this is fantasy, of course, but unless the consumers of food in this country (i.e., everyone) begin to re-achieve some sense of understanding of the true source of their human energy, we can expect some degree of unhealthy economic, social and political polarization to crop up between those who grow and those who eat, food.

Dick Downey is a hopelessly ambitious writer who is currently disguised as a UK law student. He has had some experience in the Real Worlds of journalism and disaster-area insurance adjusting. His column appears weekly in the Kernel.

Gay resolution brings emotions forward

Student senators came all too close to burning a cross at the Monday night senate meeting out of the fear and ignorance which cause people to react emotionally rather than rationally.

The senators were asked to pass a resolution supporting efforts of the Gay Students' Coalition (GSC) to gain student organizational status—which they did, by a narrow 18-14 margin. But the hour-long debate preceding the resolution's passage was a lesson in the kind of oppression which grows out of fear of the unknown.

Senators quoted the Bible, read sodomy laws, predicted orgies and pulled every trick to prevent the resolution's passage. But, now that we've all caught our collective breath, it might be a good idea to take a cooler look at the arguments used and the fear and ignorance they portray.

Senator-at-Large Mathew Welch asked whether the GSC would try to recruit heterosexuals if it obtained organizational status. As someone pointed out at the meeting, GSC is not looking for a "few good men," as are the Marines. And nobody has to fear being attacked in the bathroom or whistled at on the street if GSC were to become a student organization.

Janet Patterson, B&E senator, quoted KRS 510.100: "A person is guilty of sodomy when he engages in deviant sexual intercourse with another person of the same sex."

Although the actual sexual act as outlined in the above law, is a misdemeanor the state of being homosexual is not illegal. But up until July, 1974, anything but sex between married couples in Kentucky was also illegal—so let any of those pure among us cast the first stone.

What's more important is that in a great many states archaic sodomy laws are being struck down and there's nothing wrong with Student Government supporting such needed change.

And, finally, several senators cited their religious beliefs when explaining why they could not vote for the resolution's passage. As Arts & Sciences Senator Mary Duffy said: "This is not a moral issue, it's a political issue. The GSC is trying to work within the system to change the law." Whatever happened to the separation of church and state?

In the future when dealing with gay students or any other minorities, student senators should remember their own moral codes and prejudices should have no effect upon the way they vote. Law Senator Jerry Thornton was overwhelmingly right when he said, "The federal constitution guarantees free association, and gays are being denied their first amendment rights." Hopefully, students will never burn crosses at UK.

Soccer

Editor:

Relating to the soccer article (Kernel, "Soccer bites the dust," Sept. 30), I feel that some good points were brought forward. Soccer, in past years has become one of the best well known sports played around the world. If you think about soccer in depth, you'll realize that the highest paid player of any sport is soccer, and the person is Pele, a Brazilian soccer star. I feel that UK should let the UK soccer team go varsity instead of being a club. Not every player can afford \$15 for a uniform and \$20 for a pair of shoes and pay their own expenses for away trips.

The school only gives each driver \$5 for gas which doesn't cover very much for driving to and from the away games. During one weekend the soccer team has to drive 600 miles round trip, which means each soccer player would have to give \$5 for gas out of their own pocket. The soccer team also has to pay for their meals during the weekend, and this could cost around \$15 for a weekend trip.

At the present time the situation is ridiculous, and I hope the UK recreation department looks into this

Letters

and makes a fast change.

Kent Hyken
B&E Freshman

Life's origin

Editor:

It is now known we can recover life of sterile origin from boiling carbohydrates, but not from boiling water.

The origin of life requires a new concept: carbon-oriented biocrystals, that can induce crystals of their own image in complementary substrates.

Salines will complement crystals of salt, but not of sugar. Human ova will complement biocrystals of human sperm, but not of canine sperm. Sterile molasses will complement crystals of active charcoal. Specific areas of a cell will complement nucleic acid biocrystals in complementary regions of a cell.

Life will appear on any planet that complements biocrystals.

Searching Mars for the origin of life, which has been solved in a bowl of molasses, is like swinging a sledgehammer, to drive a tack.

B. M. Osowitz
New Jersey



campus

Senate council ranks proposed grad programs

Continued from page 1

Ranking graduate programs was delayed by the Senate Council three weeks ago because of procedural confusion and a desire for additional background information on the programs.

At that time, the Senate Council asked the Graduate Council and the Senate Academic Programs Committee to suggest priority rankings.

The Graduate Council's ranking was: 1. PhD in philosophy; 2. masters in forestry; 3. masters in teaching (mathematics); 4. PhD in Communications; 5. masters in planning; and 6. PhD in HPER.

The PhD in communications was not ranked by the Senate Council because the program hasn't yet been approved by the Board of Trustees and sent to CPHE.

The academic programs

committee ranked the programs somewhat differently.

The committee assigned the highest priority to three programs: philosophy, HPER and forestry. The masters in teaching was ranked fourth and planning fifth.

The committee further urged that forestry, HPER and philosophy be implemented immediately because indefinite delays could adversely affect faculty morale and lead to erosion of the programs' support which has already occurred in one case.

The case in question is the master in planning, which has awaited CPHE action since approval by the trustees in 1973.

CPHE delayed consideration because of a moratorium placed on graduate programs in 1972. CPHE has made only three exceptions to the moratorium, which is the prime reason for priority rankings.

Gable covers wide range of topics

Continued from page 1

should be used to improve education in Kentucky. He also proposed tax reductions in five areas which would total over \$110 million.

Some questions asked by the audience didn't seem unexpected or particularly spontaneous. The inquisitive students usually began by complimenting Gable and asking specific questions.

Covering a wide range of topics, Gable said he strongly opposes gun control, collective bargaining, racing dates for

Latonia and lowering the drinking age to 18.

"Why should we lower the drinking age to 18?" Gable asked after the speech. "I'm personally opposed to all alcoholic consumption. And, I don't see why there should be beer sales on UK's campus."

Looking at his watch an aide reminded Gable of his pressing schedule. Noting there were no more questions, Gable grabbed his brief case and hustled to a waiting car — smiling and waving all the way.

These are **COACH** bags.

You can get them at
B. Altman,
Garfinkels,
Bonwit Teller,
Bergdorf Goodman,
Lord & Taylor,
 or
 right here
 in Lexington
 at the Shop for Pappagallo.

Pappagallo

\$44 khaki rust navy saddle
 \$36 black mocha saddle putty
 \$48 navy
 \$60 saddle navy

The Shop for Pappagallo in the Lansdowne Shoppes
 Daily hours 10-6 pm

GRECIAN GARDENS

AUTHENTIC GRECIAN CUISINE FINE FOOD

5:00 PM - 1:00 AM
 MONDAY - SATURDAY
 11:00 AM - 9:00 PM SUNDAY

107 EAST MAIN LEXINGTON, KY. FOR RESERVATIONS CALL 255-4297

The stage attraction of the decade becomes the greatest entertainment event in history!

Bill Sargent presents
JAMES WHITMORE
 as Harry S. Truman in
GIVE 'EM HELL, HARRY!

A THEATRAPHON PRODUCTION BELL USED BY THEATRE TELEVISION CORPORATION Technicolor ORIGINAL SOUNDTRACK NOW AVAILABLE ON UNITED ARTISTS RECORDS AND TAPES

NOW SHOWING!
EXCLUSIVE FIRST RUN!

Cherry Chase Cinema

Times:
 2:00, 3:45, 5:35, 7:35, 9:30
 11:15 **HURRY!**
LAST 7 DAYS!

815 EUCLID 266-2174

FLU SHOTS

Will Be Given to UK Students and Their Spouses, Faculty and Staff at the Student Health Service (Medical Center Annex 4 - Across Rose Street from University Hospital.) NOTE: THE PARKING LOT IS TORN UP — THERE IS NO PARKING NEAR THE BUILDING

TUESDAY, OCT. 14 and THURSDAY, OCT. 16
 9 a.m. to noon 1 p.m. to 4 p.m.

ONLY ONE SHOT IS NECESSARY THIS YEAR

CHARGE: Student with the health fee \$1.00
All others \$3.00

IMPORTANT:

Annual influenza vaccination is not routinely recommended for healthy adults.
 Flu shots are recommended for individuals with diabetes, chronic heart, lung, renal or other debilitating conditions.
 Older persons and persons providing essential community services are also advised to consider annual vaccinations.

INTERNATIONAL LUNCHEON

Mexican Cuisine
Wednesday, October 22, 12:00 noon.
Alumni Gym Lounge

Fee: \$2.00. To make reservations in advance, call or stop by the International Student Office, 258-2755.

FREE TUTORING FREE

for STUDENTS IN PRE Or PROFESSIONAL PROGRAMS in ALLIED HEALTH, NURSING, PHARMACY

Call: 233-6347

or

Come In: Room 105E Medical Center Annex z



PEDAL POWER

MOTOBECANE bicycles are now on **SALE**
Prices are lower than last years models

Check this for **SAVINGS!!!**

Model — Mirage Reg. \$163.95

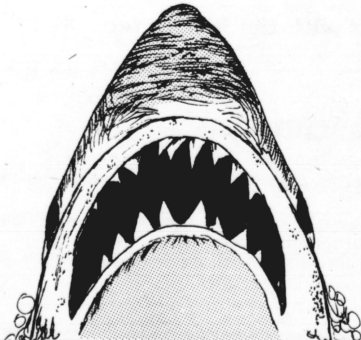
Now only **\$145.00**

We Repair all makes of Bicycles
409 S. Upper 255-6408



Area requirements beginning to put the bite on you?

If you must drop a course you can still add another through Independent Study Program Rm. 1, Frazee Hall.
Courses available in all 8 areas
Drop in Today



Geological survey helps attract industry to Kentucky, says official

By **MARY ELISE BIEGERT**
Kernel Staff Writer

A geological mapping program conducted by UK gives Kentucky an advantage over other states in attracting mineral industries, according to a Kentucky Department of Commerce official.

"The sheer force of recognition that we are receiving for this geologic mapping program is causing Kentucky to be considered by industry as never before," the official said.

The Kentucky Geological Survey (KGS), a UK research and service department, has cooperated with the U.S. Geological Survey (USGS) since 1960 to map the geologic features of the state into quadrangle units of approximately 59 square miles each.

"This is the first time in the history of the USGS that it has tried to map a state as large as Kentucky in this scale and time period," said Wallace W. Hagan, KGS director and state geologist.

The program is nearly 82 per cent complete and should be finished by July, 1978, according to Hagan.

Hagan said 671 of 767 quadrangles are field completed (surveyed and drawn up) and 529 different maps of completed areas have been produced.

He said certain quadrangles in eastern, central and western Kentucky still have to be completed and mapped.

Cooperation on the project between USGS and KGS is based on a federal matching program. USGS pays for and provides the field mappers, cartographers and technicians in the field operations. KGS matches this by providing data and reviewing and approving the maps.

KGS is funded by the Kentucky Department of Commerce, and Hagan said by July, 1976, \$8.7 million in state funds will have been spent on the mapping program.

By that date, the USGS will have spent \$17.5 million in federal funds.

Hagan estimates about \$4 million in additional funds will be needed to finish the program.

Hagan said the purpose of KGS in this and other cooperative programs, is to provide a broad base of geological and mineral resource data to aid in the economic and environmental development of Kentucky.

KGS also conducts two other cooperative programs with the USGS: a water resources investigation and a topographic mapping revision program.

KGS data is widely utilized, according to Hagan. He said the current aerial mapping would have been impossible without the topographical mapping of the state by KGS in 1958.

Hagan said KGS data is also used to determine construction and industrial sites and to plan roads. Louisville and Lexington urban county planners use the data to determine areas for solid waste disposal.

Hagan said the aerial maps are also a "lead-in" for reserve explorationists looking for areas to drill oil and gas wells.

ARMY ROTC

means

ADVENTURE/TRAINING

EXPERT STEREO

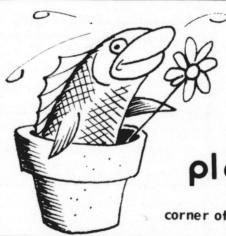
REPAIR
2 DAY
SERVICE

MODERN
SOUND
EQUIP. CO.

235 Bolivar St.

(One Block Off Campus)

254-5719



There's fish among the foliage at

plantaquarium

corner of Woodland and Euclid 254-4875

ROYAL CINEMAS
IN THE NEW LEXINGTON MALL
King 266-2176 Queen

Tommy



Roger Daltrey is Tommy

Ann-Margret Oliver Reed Roger Daltrey Elton John PG-13

Eric Clapton John Entwistle Keith Moon Paul Nicholas
Jack Nicholson Robert Powell Pete Townshend
Tina Turner The Who

This message can help save you from cancer.

- 1 Have your doctor give you a complete health checkup every year.
- 2 If you're a man or woman over 40, make sure that checkup includes a procto exam.
- 3 If you're a woman make sure it includes a simple, easy Pap test.
- 4 If you're a woman make sure you examine your breasts once a month.
- 5 Ask your dentist to check your mouth when he checks your teeth.
- 6 When you're out in the sun cover up and use screening lotion.
- 7 Don't smoke cigarettes.

These seven safeguards are saving lives every day. They're easy to follow. The next life they save could be your own.

American Cancer Society



sports

Lady Kats win close decisions

By JENNIFER WILLIAMSON
Kernel Staff Writer

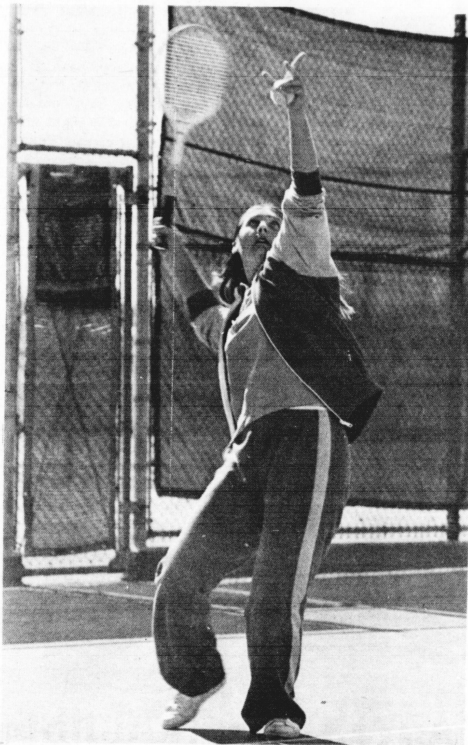
UK's women's tennis team made an impressive performance last weekend as it hosted a tri-match Oct. 3-4. The opposing teams were the University of Tennessee at Chattanooga and Indiana University.

The Lady Kats downed UT at Chattanooga 5-4 despite the fact the visitor's Candy Reynolds defeated Jackie Gibson, UK's top player, 6-2 and 6-0. Reynolds is ranked as the number one player in the South.

UK's number four player, Cindy Kearney, set the Lady Kats in the plus column as she won her single match. Kearney was followed by teammates' Holly Rentz and Doreen Dougherty's victories.

In doubles, Rentz and Gibson, along with Leslie Fisher and Nancy Meyer added wins for UK. Their victories gave UK the one point advantage it needed to put UT at Chattanooga behind them.

Gibson started things off against Indiana as she won her single event. Kathy Cassidy, Fisher, and Kearney also defeated their counterparts. Their victories tied the match at that time, but Gibson and Kearney joined forces to defeat Indiana's number one doubles team and gain another UK season victory by a score of 5-4.



—Steve Schuler

Freshman Jackie Gibson is ranked as the top Lady Kat tennis player this fall. Last weekend Gibson faced the South's number one player, Candy Reynolds, and lost rather convincingly 6-2, 6-0.

Moore leads team to victory

Sophomore Lisa Moore paced UK to its second win of the season by defeating Tennessee in a dual meet last weekend. Moore was clocked at 19:01 over the three-mile course, edging teammate Janna Andersen by less than a second. Sally Sligar, a track standout from Louisville Ballard, was Tennessee's best finisher at 20:24.

Student tickets go quickly

Student football tickets were non-existent at the Memorial Coliseum ticket windows by Tuesday afternoon.

Ticket Manager Al Morgan reports that "student tickets expired at 12:10 p.m. on Tuesday. That's a little earlier than usual." Morgan said the quick sellout

(tickets were sold for 14 hours Monday) was "a result of this being the first SEC (Southeastern Conference) game for UK and being a night game, also.

"Better than 15,000 tickets were sold," Morgan said. "Sixty per cent of these tickets went to block seating."

THE KENTUCKY KERNEL, Wednesday, October 8, 1975-5

GENERAL CINEMA CORPORATION
BARGAIN MATS. EVERY DAY 'TIL 2:30 P.M. - \$1.25

FAYETTE MALL
277-6602
NICHOLASVILLE & NEW CIRCLE RDS. 16th WEEK!

The terrifying motion picture from the terrifying No. 1 best seller.

JAWS

ROBERT SHAW RICHARD DREYFUSS
BOB SCHEIDER Times 2:00 4:40
7:20 9:40

FAYETTE MALL
277-6602
NICHOLASVILLE & NEW CIRCLE RDS. 3rd WEEK!

"LOVE and DEATH"

Woody Allen Times 2:00 4:00
Diane Keaton 5:50 7:40 9:30

TURFLAND MALL
HARRISBURG RD. 277-6100
& LANE ALLEN NOW SHOWING!

BEYOND THE DOOR

Times: 2 4 5:55 with
7:45 9:40 Juliet Mills and Richard Johnson
Rated R

FALK GINA and JOHN CASSAVETES

A WOMAN UNDER THE INFLUENCE

Produced by SAM SHAW
Written and Directed by JOHN CASSAVETES

Times: 2:30 5:30 8:30

★★★ Highest Rating!
—Kathleen Carroll, N.Y. DAILY NEWS
"The Best Picture of the Year"
—INDEPENDENT FILM CRITICS ASSN.
"The Best Picture of the Year."
—Pa. Collins, WCBS-TV NEWS
"Peter Falk Brilliant"
—Gene Shaltz, WNBC-TV
"Best Actress of the Year—Gena Rowlands"
—NATIONAL BOARD OF REVIEW

Crossroads

Cinema 1-2
1 East Reynolds Rd. Phone 472 6111 NOW!

Times: 2:00 3:50 5:40
7:45 9:45

"THE OTHER SIDE OF THE MOUNTAIN"

PG

Perkins
CAKE & STEAK HOUSE
729 S. Lime

MUNCHIE MAGIC

TIL 2AM

CHOW

919 S. LIME

uk theatre out of doors
a floating theatre festival

october 6-10

Festival * in the event of rain performances will be scheduled at the festival tent in the botanical garden

Ⓐ amphitheatre Ⓑ dorm complex
Ⓒ botanical garden Ⓓ library lawn
Ⓔ student center patio

Wednesday

12—lemonade BG
noah webster's unabridged electric ark L
change: or mr. shatter's cow L
tilly tutweiler's silly trip to the moon BG
4—the loveliest afternoon of the year: A
dunelawn BG
6:15—the doll factory DC
change: or mr. shatter's cow DC

Thursday

12:15—in the beginning L
lemonade SCP
picnic on the battlefield A
tilly tutweiler's silly trip to the moon BG
4—lunchtime concert BG
spoon river A
6:15—why i live at the po DC
the loveliest afternoon of the year DC

Friday

11:4:30— all plays in the festival tent BG

FAYETTE FUN-D RAISING

- PARTY NIGHT!

THURSDAY, OCT 9, 1975 ★ ★

FOOD & ENTERTAINMENT 5:30 P.M. EDT ★

<p>RED MILE GRANDSTAND</p> <p>FEATURING</p> <p>Governor Julian Carroll and other Statewide Democratic Candidates</p>	<p>REFRESHMENTS & ENTERTAINMENT</p>	<p>\$200</p> <p>STUDENT TICKET</p> <p>CHILDREN UNDER 12 ADMITTED FREE</p>	Paid for by Fayette County Democrats United 75 161 N. Limestone St. Lexington, Ky. 40507 Cecil F. Dunn, Treasurer
--	--	---	--

BOB TRUE Circuit Court Clerk
 PAT MOLLOY Commonwealth Attorney
 MIKE MOLONEY Senator, 13th District
 JAMES LEMASTER Representative, 72nd Dist.
 WILLIAM KENTON Representative, 75th Dist.
 STEVEN BESHEAR Representative, 76th Dist.
 GLENVA BEVINS Representative, 77th Dist.
 JOE SAVAGE Representative, 78th Dist.
 DON STEPHENS Representative, 79th Dist.

For advance tickets call Gay Dwyer at 257-2476

Reds and Red Sox clinch playoff championships

PITTSBURGH (AP) — Pinch-hitter Ed Armbrister's sacrifice fly drove in the winning run in the 10th inning Tuesday night, giving the Cincinnati Reds a 5-3 triumph over the Pittsburgh Pirates and the National League pennant.

The third game of the National League playoffs went into the 10th inning Tuesday night after Cincinnati relief pitcher Rawley Eastwick walked Duffy Dyer with the bases loaded, pulling Pittsburgh into a 3-3 tie.

The victory gave the Reds a three-game sweep of the NL playoffs and sent them into Saturday's opening game of the 1975 World Series against Boston in the Red Sox' Fenway Park. Boston beat three-time world champion Oakland in three straight games to win the American League pennant.

OAKLAND (AP) — Boston relief pitcher Dick Drago killed Oakland's last hope for a victory with one pitch Tuesday night and Carl Yastrzemski contributed two hits and another brilliant fielding play as the Red Sox completed a sweep of the American League playoffs with a 5-3 victory over the world champion A's.

The victory gave Boston its

first league championship since 1967 and sent the Red Sox home to Fenway Park where they will open the World Series on Saturday.

Ohio St. tops poll

By The Associated Press

The Top 20 teams in the Associated Press college football poll, with first-place votes in parentheses, season records and total points. Points based on 20-18-16-14-12-10-9-8-7-6-5-4-3-2-1:

1. Ohio St. (47)	4-0-0	1,178
2. Oklahoma (14)	4-0-0	1,072
3. S. Calif. (1)	4-0-0	975
4. Nebraska	4-0-0	858
5. Texas	4-0-0	722
6. Texas A&M	4-0-0	657
7. Alabama	3-1-0	451
8. Michigan	2-0-2	444
9. Penn St.	4-1-0	383
10. W. Virginia	4-0-0	321
11. Arizona St.	4-0-0	179
12. Missouri	3-1-0	175
13. Colorado	3-1-0	153
14. Oklahoma St.	4-0-0	144
15. Michigan St.	3-1-0	141
15. Notre Dame	3-1-0	141
17. Arizona	3-0-0	116
18. Florida	3-1-0	98
19. Tennessee	2-1-0	66
20. Miami, O.	3-1-0	17

be choosy




Famous Thin'n Crispy **New Thick'n Chewy**

Some like pizza thin, others like it thick. But everybody likes the Pizza Hut® because we give you a choice. Try famous Thin'n Crispy or new Thick'n Chewy. Through thick and thin, you'll like it here.

Our people make our pizza better



© Pizza Hut, Inc. 1974 Litho in U.S.A.

STUDENTS and FACULTY
THURSDAY SPECIAL

 <p>SLACKS PANTS SKIRTS SPORT COATS</p> <p>69¢ each</p>	 <p>Men's or Ladies' SUITS & Ladies' Plain DRESSES</p> <p>\$1.09 each</p>	 <p>SHIRTS</p> <p>laundered to perfection!</p> <p>25¢ each</p>
---	--	---



One HOUR DRY CLEANERS

8 CONVENIENT LOCATIONS

Crossroads Shopping Center 742½ Winchester Road
 Chevy Chase Landsdowne Turfand Mall
 1837 East Piccadome, Northland Village Square

 KNITS should be DRYCLEANED by PROFESSIONALS

KENTUCKY
 214 E. MAIN ST. 254-6010



**"DOCTOR
 FEELGOOD"**

Starring
 HARRY REEMS and INGER KISSIN

NOW SHOWING!
 -2- ADULT HITS



After
 the
 divorce...
 Then
 the
 FUN
 begins!

*the
 Young
 Divorcees*

BOTH RATED X
 NO ONE UNDER 18 YRS. - I.D. REQUIRED

CINEMA
 220 E. MAIN ST. 254-6006

Starts Tonight!

Special Limited Engagement 7 DAYS ONLY

RICHARD ELLMAN PRESENTS A CINEMA - SOUND EXPERIENCE IN

ALL NEW



**THE
 LONDON
 ROCK
 AND ROLL
 SHOW**

PG-13

THE STARS THAT STARTED THE WORLD
 ROCKIN' ARE STILL
 ROLLIN'

CHUCK BERRY LITTLE RICHARD
 JERRY LEE LEWIS BO DIDDLEY BILL HALEY
 WITH WICK JACOBSON

Want to Feel Good? Roll Back to the '50s!

Guy's brush in your D.A.'s Gals... Dig out your Petticoats, bobbi sox, and shoes!
 Tonight anyone with a 1950's outfit admitted free...and at 7:45 p.m. \$50 to the couple the audience judges to have the best 50's outfit!

classifieds

FOR SALE

WHISKEY BARRELS White Oak Whiskey barrels only \$16.00 each. Call Steve 272-8971 1031

1965 VOLKSWAGEN bus, \$275.00, call 258-5408 after 4:00. 2908

GUITAR AMP Fender Bassman Brown Covers, 2 cabinets, best offer over \$260. 277-1620. 3010

JOTUL: Norwegian wood burning stoves. Fully cast, 76 per cent efficiency. From \$225. Dick Richards, Chicory Ridge, Rt. 2, Sadieville, (606) 234-6398. 30024

GIBSON Les Paul Custom excellent condition, \$395. Call John Cook, Jr. 255-2381 day, 266-6971 after 6:00 p.m. 308

CUSTOM built 2-way speakers utilizing Ulah components, \$100 pair. Call 278-5307. 309

1974 HARLEY DAVIDSON SX350, 1,950 miles, \$775.00. Call 254-9903 after 5:30 p.m. 309

SERTA QUEEN size mattress and box spring, \$110. call 266-5842. 608

1969 FORD Wagon, low mileage, runs perfect, \$450.00, M.F. days 258-9754. 609

HOUSE three bedrooms, dining room, one bath, garage, call 253-0928 or 272-0554. 7013

1968 REANULT RIO Reliable economical transportation, \$400. Call 258-8307. 709

1971 MONTE CARLO Chev. Automatic, air, power steering and brakes, 350 2 barrel, great condition. Phone 257-0773. 708

SMITH COROLLA Electric 12 Typewriter, never used. Call 252-1900. 708

1974 MG MIDGET convertible, blue, radio, radial tires, \$2800. Call 257-1130. 7010

SEWING MACHINE old Singer works, includes attachments, cabinet. 259-0131 after 9 p.m. \$300.00. 708

OLDER MODEL GE Refrigerator, \$25; couch end tables, kitchen table and chairs; 299-4047. 709

TWO TICKETS for Auburn game. Section III, 2B 8404. 709

STEREO GE Portable Mustang II Record Player, Headphone Jack, \$30; call 276-1773. 708

CRESCENT 10 speed all-Camp Reynolds Frame new condition, \$400. Craig 252-1900. 709

CHOCOLATE SUEDE JACKET "Highlander", zip-in lining, size 8. Worn once, \$75. 873-9388. 608

1971 MGB must sell, \$1000, after 5 pm call 278-3088. 8010

MONTGOMERY WARD Century Pool Table with balls, cue sticks, rack, table cover, table brush, manual, trick shot book, wall holder for sticks, balls and supplies. Call 278-0349. 8014

GUITAR GIBSON 12 string, excellent condition with case, \$100. 252-4319 or 255-4943. 8013

10 SPEED BIKE, "25" frame, pack, lock, chain included. \$120. 277-8131. Brand New! 809

CALCULATOR Unisonic floating decimal 12 digit battery or AC \$45 phone 266-6310. 8010

NEW 12 string Alvarez acoustic guitar, free hardshell case. Sacrifice, \$140. 252-8728. 8010

MARSHALL AMPLIFIER and Rickenbacker Guitar. 6 string, \$700.00. Call 272-8415. 8014

1968 NORTON, 750 CC; recently rebuilt and rewired; needs minor repair best offer. 269-6288 evenings and weekends 258-2965 (weekdays). 8010

CHROME MAG WHEELS. Complete set of four fit 1968-1975 Volkswagen. All models. Excellent condition. Call 873-5788. 809

1965 PLYMOUTH FURY good engine new tires, fair condition. 272-4965 after 5:00 pm. 8010

FREE KITTENS to good home. black and Siamese colored; 293-6104 after 5. 808

FENDER VIBROLUX AMPLIFIER with guitar like new \$250.00 299-9237. 8010

STEREO COMPONET Sets Pioneer 155 watts. BSR turntable, Altec design speakers \$250.00 Lafayette 40 watts same equipment as above \$200.00. 299-9237. 8010

HEWLETT PACKARD - 21 Calculator excellent condition. \$100.00 call Hart after 3:00 257-1207. 808

1972 SUZUKI MOTORCYCLE good condition \$300; 299-6851 after 5. 809

DODGE DART 45 GT automatic runs good, best offer; call 239-0120 after 5 p.m. 8010

10-SPEED BIKE \$90.00 Raleigh Grand Prix 25" Frame, Good Shape 254-6101. 808

SLEEPING BAGS new first quality from North Carolina Factory; dacron 88 & polycron filled nylon exteriors \$10 to \$15 each. Call 277-6181 or 233-1082 ask for Mike. 8012

1971 DODGE Tradesman 100 van fully customized 253-0295 from 9 to 7 pm. 8014

\$600.00 MAESTRO Rhythm bo brand new \$350.00 293-6122. 8014

BOX SPRINGS and Mattress, Dining Room chairs, Desk, Rocker, China, Manual Typewriter, 278-9273 after 5:00. 809

COCKATIELS pairs only. normal gray. \$100.00; gray-albino \$170.00. 278-6760 after 5 pm. 8010

LOST

BLACK DOG, short, female, cocker terrier mixed breed. Reward. 252-0261. 8017

SUEDE JACKET, Physic's conference room. Very important to owner. Call 258-5545. 3013

CALCULATOR in CB Thursday at 9:30 his class. Reward. 252-3175 or 257-8448. 709

NAVY BLUE SWEATER, Singles-Friday night. Car keys in pocket, extremely sentimental. Reward. 252-3664. 709

GREEN CANVAS BOOK BAG in Stadium parking lot Friday. Need notebooks and contents desperately. Reward 1-623-8472. 708

GREEN CARDIGAN SWEATER on campus Monday, 272-1539. 708

FOUND

WEIMARANER, on campus. 258-4938 or 278-6398 and identify. 8010

MISC.

FREE Tortoise shell Tiger Kitten, 2 months, really cute and playful. Vaccinated. 873-9388. 708

PART PERSIAN KITTENS, vaccinated. Tonic for price of shot. 266-2272. 8010

memos

PHILOSOPHY LECTURE. "Pre-Socratic Categories in Fichte," by Professor John Lachs of Vanderbilt University, 8:00 p.m. Room 206 Student Center. 709

ARCHAEOLOGICAL INSTITUTE, Public Lecture, Saul Weinburg, University of Missouri. "Tel Anafa: A Greek Town In Upper Galilee?" Thursday, October 9, CB 118, 8:00 p.m. 709

LEMONADE, UK Theatre Out of Doors Festival Production, Wednesday at noon in Botanical Garden, Thursday at 12:15 pm at Student Center Patio, Friday at 3:15 pm in Festival Tent in Botanical Garden. 709

CHANGE; OR MR. SHAFTER'S COW, UK Theatre Out of Doors Festival Production, Wednesday at noon at Library, Wednesday at 6:15 pm in Dorm Complex, Friday at 2:15 pm in Festival Tent in Botanical Garden. 709

TILLY TUTWEILER'S SILLY TRIP TO THE MOON, UK Theatre Out of Doors Festival Production, Wednesday at noon in Botanical Garden, Thursday at 12:15 pm in Botanical Garden, Friday at 11:40 am in Festival Tent in Botanical Garden. 709

THE LOUDEST AFTERNOON OF THE YEAR, UK Theatre Out of Doors Festival Production, Wednesday at 4:00 pm in Amphitheatre, Thursday at 6:15 pm in Dorm Complex, Friday at 1:00 pm in Festival Tent in Botanical Garden. 709

MORTAR BORRD Meeting Thursday, October 9th 8:15 at 7:00. Mark Wallace will speak on Women's Role in Employment open to the public at 7:30. 709

MEETING OF STUDENT Affiliate of the American Chemical Soc. Tuesday Oct. 14, 7:00 p.m. C.P. 137 All Chemistry Majors and Chemical Engrs. are invited. 709

"AN EVENING OF TOLKIN", readings from the works of J.R.R. Tolkien will be presented Thurs. 9 Oct. at 8:00 pm. Student Center Theater. 709

COLLEGE OF LIBRARY SCIENCE announces that Walt Morey, author of "Gentle Bert", will speak in Student Center, Rm. 206, Oct. 9, 9:30-10:45 a.m., about his writing and children books. 709

ECO-TACTICS Free U class will meet Thursday October 9 7:30 pm at 270 Rose Street. Directions? Call Steve 254-9291. Last open meeting. All welcome. 809

JAMES THUNBER Stories read by Vanturgen, McNeese, Houffs, Howard, Wed., Oct. 8, 12:00-12:50. Sponsored by Dept. of Human Communication and P.L.S. 608

THE BLACK VOICES of UK will be in concert Thursday, October 9, 1975 at 8:00 p.m. in the Sam'l Ballroom of the Student Center. The admission is free for anyone wishing to attend. 709

HAVE you "Hold the woid"? "Wifed Wednesdays" have moved to Da exciting new Contract Lounge at Holiday Inn East. All youne dames can enjoy your favorite beverages for just 4 bits (that's 50 cents) From 5:7 p.m. and listen to the best live entertainment in town. The Contract Lounge: Wednesday: BE THERE! 708

ARRON'S our new home is at 129 East Second Street. We are preparing a house-warming, but in the meantime come and see all the new goodies we have now. Shipments arriving weekly also a very few special items will be on sale. Hours 11:30-6:00 phone 255-7802. 8010

HELP WANTED

WANTED BY CHIEF EXECUTIVE: Part time secretary to handle personal mail and appointments. Must be dependable, make nice appearance, good typist and be accurate in transactions. Prefer three mornings each week but will work with applicant on a schedule. Office located near the University of Kentucky. Prefer wife of graduate student who will be at the University for several years. Excellent pay. Call 254-3447 for an interview appointment. 709

PART TIME SECRETARY, Flexible Hours Familiar with some office Equipment and Procedures. Scruggs Search and Placement Agency. 254-4615 Equal Opportunity Employment Agency. 708

WORK your own hours, selling first quality sporting goods below retail prices. Would like two males and two female students for sales position. Liberal commissions, paid daily or weekly. Call Mike at 233-1082 after 5 p.m. or 277-6183. 7013

NEED HELP with the races at Keeneland coming up. Write exchange Box 11279 Lex. Ky. 40501. 8010

PART TIME Help needed weekends, weeknights. Apply between 7:10 pm, Mc Donald's Nicholasville Rd. 109

SALESPERSON Earn \$100.00 up in your spare time, worth your time to call (502) 863-2878 George Town, ask for Ken Melvin. 308

MALE OR FEMALE MODELS for the latest in modern hair styling at no cost to you. THE IMAGE MAKERS: Phone: 273-1910 209

TWO KEYS Needs Bartender Wed. and Fri. from 8 to 12 Sat. opening to closing. 22 yrs. or over. Graduate student preferred. 333 South Limestone Wed. & Thurs. after 5:00 pm. 808

"BRANDYWINE SKI RESORT has jobs for men women who can drop out winter quarter. Good pay, lodging, Box 343 Nor- thfield, Ohio, 44667. 808

STUDENT to stay with children, afternoons 2:30-5:00 Tuesday through Friday. Call 254-7962 after 5:30 p.m. 8015

BABYSITTER to care for 2 children three half days per week. 233-0141. 7015

HOUSEPARENTS needed for girls group home. Married couple or single persons may apply, call 254-1564. 608

MATURE PERSON for innercity library position. Must know street scene. Hours: 3-5, M-F. Call Mike, 252-8871, \$2.30 wage. 608

"RECREATION HELPERS needed to work weekends with handicapped adults. Call Mrs. Yates, 272-3496 for appointment."

KELLY GIRL needs 25 inventory clerks Thursday, October 16 only. Lunch provided. Hours 8 am-5 pm. Call by October 10th to register, 233-1502. 709

DELIVERY BOY wanted 3 to 4 hours daily. Some heavy lifting. Occasional press washing. Apply Byron-Page Printing 120 Walnut. 254-6080. 709

HORSES: Student to work part or full time on Horse Farm. Must have had some experience with horses. Also must be available for 7 afternoons a week or mornings. Call 299-4677. 7013

WE HAVE AN OPENING for part time maintenance person. Must be able to work midnight till 8 AM Friday and Saturday night. Apply McDonald's 2483 Nicholasville Road. 809

FOR RENT

3 BEDROOM 2 baths, carpet, air, range, dishwasher, disposal, 304 Tiverton Way, 3016

GIRL to share house, \$67, utilities minimal, animals welcome. 278-6389 after 6. 709

FURNISHED ROOM with refrigerator, 29 S. Lime, mature students only, 233-1964. 608

FEMALE ROOMMATE to share apt. \$80 monthly, utilities included, central air, pool, Landmark Apts., close to campus, 277-3069 after 5. —809

ONE-BEDROOM apartment, furnished \$120 including utilities. call 276-1773. 809

ROOM, one block from student center, refrigerator guys only, 244-2649. 8010

NICE ROOM, bath, private entrance. Available Nov. 1. Gardenside Serious student. 278-2162. 8010

3 BEDROOM 2 baths, carpet, air, range, dishwasher, disposal, 304 Tiverton Way, 266-4919. 3016

SERVICES

STEREO REPAIR Fast expert service with all work guaranteed. After 5 PM 255-0425. 2031.

SPEED READING course: build speed and comprehension; how to study, how to write research papers and thesis. Learning foundations, the Tutoring Center. 452 E. High St., 254-5588. 6010

ABORTION AND BIRTH control information and referral. No Fee Referral Up to 24 weeks. General anesthesia. Vasectomy and tubal ligation also available. Free pregnancy test. Call PCS, Non-Prof. 202-289-7995

\$500 a month and owning your own business excite you? 293-5087 after 4 PM. 8010

GRADUATE MUSIC STUDENT will teach beginning guitar students 1/2 hr. lesson 252-5124. 809

PROFESSIONAL TYPING of Manuscripts, theses, dissertations, research papers near U.K. Bank Americard & Master Charge accepted. Blue Grass Secretarial, 61 South Broadway, 255-9425. 18A30

INTERN AND WIFE will do live-in babysitting white parents away. Phone 272-5560. 1010

NEED HELP MOVING? Rent me rent my truck. Steve 257-3593 leave number save this ad. 708

TIRED OF OVERPRICED INCOMPETENTS: Young registered mechanic wants to help. Care for that ailing loved one. Call me at home for estimate. Reasonable 259-0095. P.S. will travel. 2013

PERSONALS

HAPPY BIRTHDAY THEONA with love from Mom. 808

PEGGY & JOHN hmmm not bad! 809

MATT AND C.J.: you wrap well! Monday visitor. 808

TO JANEY: Love to my Kat; Big sis. I'm excited! JT 808

KIRK: Beware of tricky elevators in Blanding Tower! Cate and LuAnn. 808

POOH: Know that I'll always understand and love you. Steve. 708

BLAND-T 5 So What? Leave the kitchen, you can't stand the heat! Kirwan-T 17. 808

PAPI: Come back; contact me I love you. T.C. 3013

NOTICE:

As of Wednesday, October 8, THE KENTUCKY KERNEL WILL DISCONTINUE "PERSONALS". All personals already received will be inserted, but no more will be accepted after today.

WANTED

FEMALE, share two bedroom apartment with two girls, \$56.50 including utilities, own bedroom. 255-5358. 7013

RIDE TO Pikeville, KY, will pay part on gas. Call Elaine, 258-5340. 6010

ROOMMATE to share furnished apartment, close to campus, \$70, share electricity, 256 Lynchurst Place Apt. 15 after five. 608

REGULAR PART TIME babysitter, at least two 5 hour weekdays. Call 255-1680. 6010

COUPLE AND CHILD want house or duplex, U.K. or South, reasonable. 278-2162. 1010

WANTED: 2 tickets to UK Football game this weekend. Will pay up to \$20 depending on location. Call 266-8471. 8010

GOOD PAIR OF USED SKIS: Call after 5:00, 269-1579. 809

1 or 2 FEMALES to share 2 bedroom apt. \$180 252-4104. 8018

RIDERS WANTED to St. Louis Friday Oct. 10 call 254-0888 after 5. 8010

PART-TIME BABYSITTER for one five-year old boy. Room and board. 272-3505 after 5:00 p.m. Gainesway. References. 8010

BANJO TEACHER for two students. Must be patient. Call 258-8171 or 238-8023. 7010

MALE to share furnished house, near campus, \$700.00 plus one third utilities. 253-2966. 709

WOODED TRACTS

Enjoy fall color and spectacular views, near Berea, 42 miles from Lexington. Approximately eight acres, \$5,500. \$900 down, \$113 per month. 8 1/2 per cent interest. Owner financing. Or, approximately 10 acres, \$4,200. \$500 down, \$91 per month. 8 1/2 per cent interest. Call 269-4978.

KENTUCKY Kernel CLASSIFIEDS

Fall Rates for Classified Advertising are One Day, 12 Words, only 50¢. Additional words over 12 are 10¢ extra per word, per day. Deadline for classifieds is 11:00 a.m. the day before you want your ad to run.

Please print your classified here:

Dates of days your ad is to run: _____

Heading of your ad, (For Sale, Rent, etc.) _____

Your Name: _____ Address: _____

Make your check payable to The Kernel Press Inc. Mail it with this form or bring it by our office, Rm. 210 Journalism Bldg. Payment must accompany your advertisement.

Earn \$\$\$ Weekly
BLOOD PLASMA
DONOR CENTER
 313 E. Short Street
 Monday - Saturday 9:30 a.m. - 4:45 p.m.
 252-5586

LAN - MARK STORE

White Painter Pants	Bibs
Screwdriver Pants	Flannel Shirts
Khakia Pants	Hiking Boots

361 West Main St. Phone 254-7711

Board approves biennial budget

Continued from page 1

The biennial budget request also includes \$46.5 million for construction projects over the next two years. The requested facilities are urgently needed, Singletary said. The \$46.5 million is half of what was originally requested in making up the budget.

The biennial budget request will now be forwarded to the Council on Public Higher Education, which will act upon the request by mid November.

Afterwards, the budget request will be given to the Kentucky Department of Finance and Administration. This department prepares the budget for the governor, who makes his recommendations concerning the request to the legislature. The legislature will take final action on the biennial budget early next year.



—Ron Mitchell

Dr. Otis A. Singletary uses a chart to show the effects of inflation on the University at Tuesday's Board of Trustees meeting.

memos

HPSAC PARTY Freshmen Honors Program Get Together October 10, 1975—8:00 p.m. 610 Baldwin Avenue. Music provided, refreshments served. University Honors Program Freshmen only. 8010

ENVIRONMENTAL ACTION SOCIETY will meet Wednesday October 8 7:30 pm SC Rm. 10v. Discussion of campus recycling, nuclear power conference among other things. 808

ASID student chapter will meet Thursday, Oct. 9 at 7:30 in room 128 Erikson Hall. Norman Niemi from Univ. of Cincinnati will speak. 809

LUNCHTIME CONCERT, UK Theatre Out of Doors Festival Production, Tuesday at 12:15 p.m. in Botanical Garden, Thursday at 12:00 p.m. in Botanical Garden, Friday at 11:00 a.m. in Festival Tent in Botanical Garden. 608

UK THEATRE Out of Doors Festival, Friday 11:00 am-4:30 pm in Festival Tent in Botanical Garden. 8010

WHY LIVE AT THE PO, UK Theatre Out of Doors Festival Production, Tuesday at 4:00 p.m. at Fountain, Thursday at 6:15 p.m. in Dorm Complex, Friday at 1:00 in Festival Tent in Botanical Garden. 608

INTERNATIONAL FOLK DANCERS will meet Wed. Oct. 8 at 7:00 pm, 206 SC. Bring records. 708

ALPHA EPSILON Delta (a premed, pre dent honorary society) is now taking applications for membership in O.T. 271. Stop by and see if you are eligible. 608

PRE-MED& Pre Denis interested in going on A.E.D. sponsored tour of U. of L. Med. School and Dental School on Oct. 25. Must sign list in O.T. 271. 608

ABSENTEE BALLOT applications are available from now through Oct. 27 in the Student Government office, Rm. 120 Student Center. 8010

THE COLLEGE OF HOME ECONOMICS is having their third annual Historical Fashion Show Saturday, Oct. 11th at 12:30 pm at Spindletop Hall. Everyone is invited. 8010

KENTUCKY STATE DIVISION, American Association of University Women-state convention October 10th and 11th in Covington, Kentucky, further information, call AAUW, 277-9187 after 4:00 p.m. 808

DR RODOWSKAS will speak Thursday, Oct. 9 at 10:00 am in the Med Center Auditorium on the topic "How Many Pharmacists? For What?" 808

INTERNATIONAL BICENTENNIAL Festival Memorial Coliseum, Thursday, Oct. 9, 6:00 pm to 10:00 pm; Friday, Oct. 10 9:00 am to 10:00 pm; Saturday, Oct. 11 12:00 noon until midnight; Sunday, Oct. 12, noon to 6:00 pm. 8010

TENANT RIGHTS FORUM, Bring your complaints and questions. Oct. 13, Monday 7 pm Rm. 245 SC. 808

COMPLAINTS ABOUT your Landlord? Student Government is doing a survey and we need to hear from you. Call SG 257-2691. 808

FREE UNIVERSITY CLASS: meets Wednesdays 8:00 p.m. Student Center Room 116 sponsored by Divine Information Club. 808

FREE MEDITATION SEMINAR 8:00 p.m. nightly 984 Holly Springs Drive (Gardenside Area) Phone 277-5265 sponsored by Divine Information Club. 808

FREE U CLASS: National organization for the reform of Marijuana Laws (Norml) will meet wed. at 7 pm Rm. 119 SC. All interested please attend! 809

IEEE Meeting, Thursday, Oct. 9, at 12:15 pm in AH 53. There will be a short film on "Consumer Protection." 809

"BAHA'I MARRIAGE It's Meaning and Importance," an informal discussion sponsored by UK Bahai Association, Friday, 7:30 pm, Apt. A-223, Cooperstown 8010

PICNIC ON THE BATTLEFIELD, UK Theatre Out of Doors Production, Tuesday at 12:15 p.m. in Amphitheatre, Thursday at 12:15 p.m. in Amphitheatre, Friday at 1:40 p.m. in Festival Tent in Botanical Garden. 608

DUNELAWN, UK Theatre Out of Doors Festival Production, Tuesday at 4:00 p.m. in Botanical Garden, Wednesday at 4:00 p.m. in Botanical Garden, Friday at 12:15 p.m. in Festival Tent in Botanical Garden. 608

It Sounds Incredible

BUT EVELYN WOOD GRADUATES CAN READ

THE EXORCIST IN 58 MINUTES

At That Speed, The 403 Pages Come Across With More Impact Than The Movie.

You can do it, too. So far over 550,000 other people have done it. People who have different jobs, different IQs, different interests, different educations have completed the course. Our graduates are people from all walks of life. These people have all taken a course developed by Evelyn Wood, a prominent educator. Practically all of them at least tripled their reading speed with equal or better comprehension. Must have increased it even more.

Think for a moment what that means. All of them—even the slowest—now read an average novel in less than two hours. They read an entire issue of Time or Newsweek in 35 minutes. They don't skip or skim. They read every word. They use no machines. Instead, they let the material they're reading determine how fast they read. And mark this well: they actually understand more, remember more, and enjoy more than when they read slowly. That's right! They understand more. They remember more. They enjoy more. You can do the same thing—the place to learn more about it is at a free speed reading lesson.

This is the same course President Kennedy had his Joint Chiefs of Staff take. The staff of President Nixon completed this course in June 1970. The same one Senators and Congressmen have taken.

Come to a Mini-Lesson and find out. It is free to you and you will leave with a better understanding of why it works. One thing that might bother you about your reading speed is that someone might find out how slow it is. The instructors at the Evelyn Wood Reading Dynamics Free Speed Reading lesson will let you keep your secret. It's true we practice the first step to improved reading at a Mini-Lesson and we will increase your reading speed on the spot, but the results will remain your secret. Plan to attend a free Mini-Lesson and learn that it is possible to read 3-4.5 times faster, with comparable comprehension.

SCHEDULE OF FREE MINI-LESSONS

You'll increase your reading speed
50 to 100% on the spot!

Today and Tomorrow
at 4 p.m. or 8 p.m.

at the RAMADA INN IMPERIAL
525 Waller Ave.

EVELYN WOOD READING DYNAMICS