

Examined and endorsed
W. W. Formant
 PRES. LOCAL BOARD
E. J. Myall
 SECY. LOCAL BOARD
Wm. C. Carney
J. H. Talbot
Formant & Parrish
McCarthy & Co.
A. C. Parish
J. D. McCintock
John T. Doyle
John H. Webb
H. C. Hinton
Hugh Montgomery

Insurance Maps
PARIS
 Bourbon County KENTUCKY

Sanborn
PERRIS MAP CO. Limited
 115 Broadway, New York
 SCALE 50 FT. TO AN INCH
Jan'y. 1896

Copyright 1896, by the Sanborn-Perris Map Co. Limited

Population, 7000. Prev. Winds S.W.

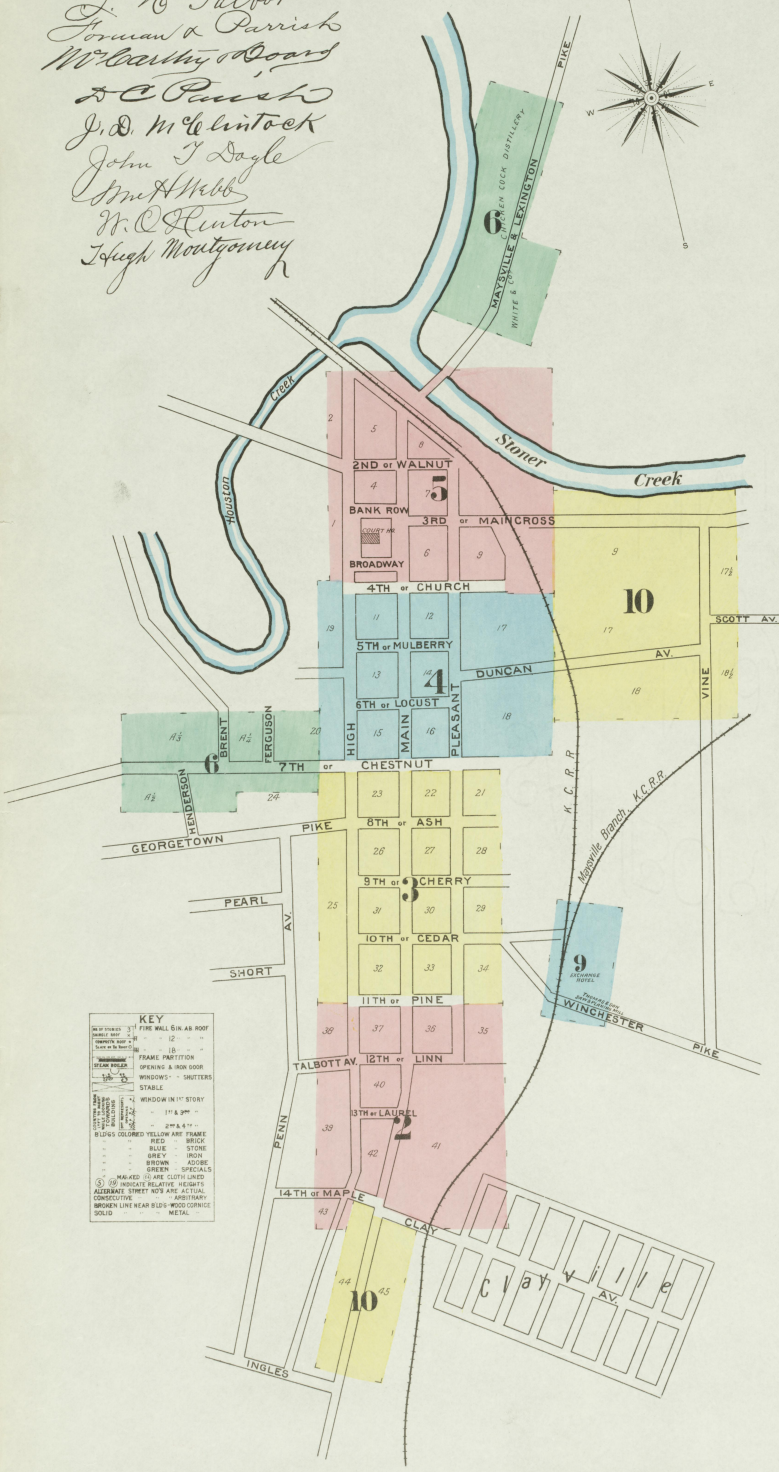
WATER FACILITIES
 Paris Water Co. (Private Corporation), Stand Pipe and Direct Pressure System of water works, 7 Miles of Water Pipes, 31 Double and 5 Quadruple Hydrants, Stand Pipe 60' high, 25" Diam. Cap'y 235,000 Galls. Elevation 40' above Court Ho. 2 Deane Duplex Pump, Cap'y 2 1/2 Million Galls. per 24 hours.

FIRE DEPARTMENT
 Volunteer, 12 Men partly paid, 2 Regular men, 22 Fire Alarm Boxes, 1 Steam Fire Engine, 2 Hose Carts, 1 Hose Wagon, 1500' 2 1/2" hose, 1 Hook & Ladder Truck, 100' of ladders.

INDEX.

STREETS.	SPECIALS.
Ash, or Eighth, A 3	Baptist Church, B 4
Bank Row, B 5	Bourbon County Distilling Co., 9
Broadway, 5	" New Printing, 6
	" Steam Laundry, 6
	" Brent, C. S., & Bro., Grain & Seed Warehouse, 4
	C
	Catholic Church, 3
	Chislen Cook Distillery, 3
	Christian Church, 3
	Colored Christian Church, 6
	County Court House, 5
	" Jail, 5
	E
	Episcopal Church, 5
	Exchange Hotel, 9
	F
	First Presbyterian Church, 4
	Grand Opera House, 3
	H
	Holiday, J. W., Carriage Factory, 5
	Hotel Fordham, 4
	Huddleston, Metcalf & Co., Carriage Works, 5
	Hutchcraft, R. B., Warehouses, 5
	K
	Kentuckian Citizen Printing, 5
	K. O. R. R. Freight Depot, 5
	" " Pass Station, 9
	" " Kentucky Republican Printing, 5
	M
	McKenny, E. J., & Son Wagon Works, 4
	Mason, W. W., Warehouses, 5
	Mechanics Hotel, 3
	Methodist Episcopal South Church, 4
	Moore, S. F., Tobacco Warehouse, 9
	N
	Neely, R. J., Warehouse, 5
	P
	Paris Distilling Co., 7
	" Electric Light Co., 9
	" Milling Co., 5
	" Peacock Distillery Co., 8
	" Public School, 6
	S
	St. Charles Hotel, 3
	" Paul's A. M. E. Church, 2
	" Second Presbyterian Church, 4
	" Simms, W. E., Warehouse, 5
	" Spears & Stuart, Warehouses, 5
	" Standard Oil Co., 10
	T
	Tarr & Temple, Planing Mill, 5 & 10
	Thomas, J. M., & Son, Lumber Yard, 2
	" " Tobacco & Lumber Warehouse, 2
	" " J. W., & Son, Tobacco Warehouse, 3
	" Tartney, Clark Mitchell, Livery, 5
	W
	Walsh, N. J., Distillery, 7
	Ward, J. Q., Tobacco Warehouse, 9
	White, G. O., & Co., Distillery, &c., 6
	Windsor Hotel, 5

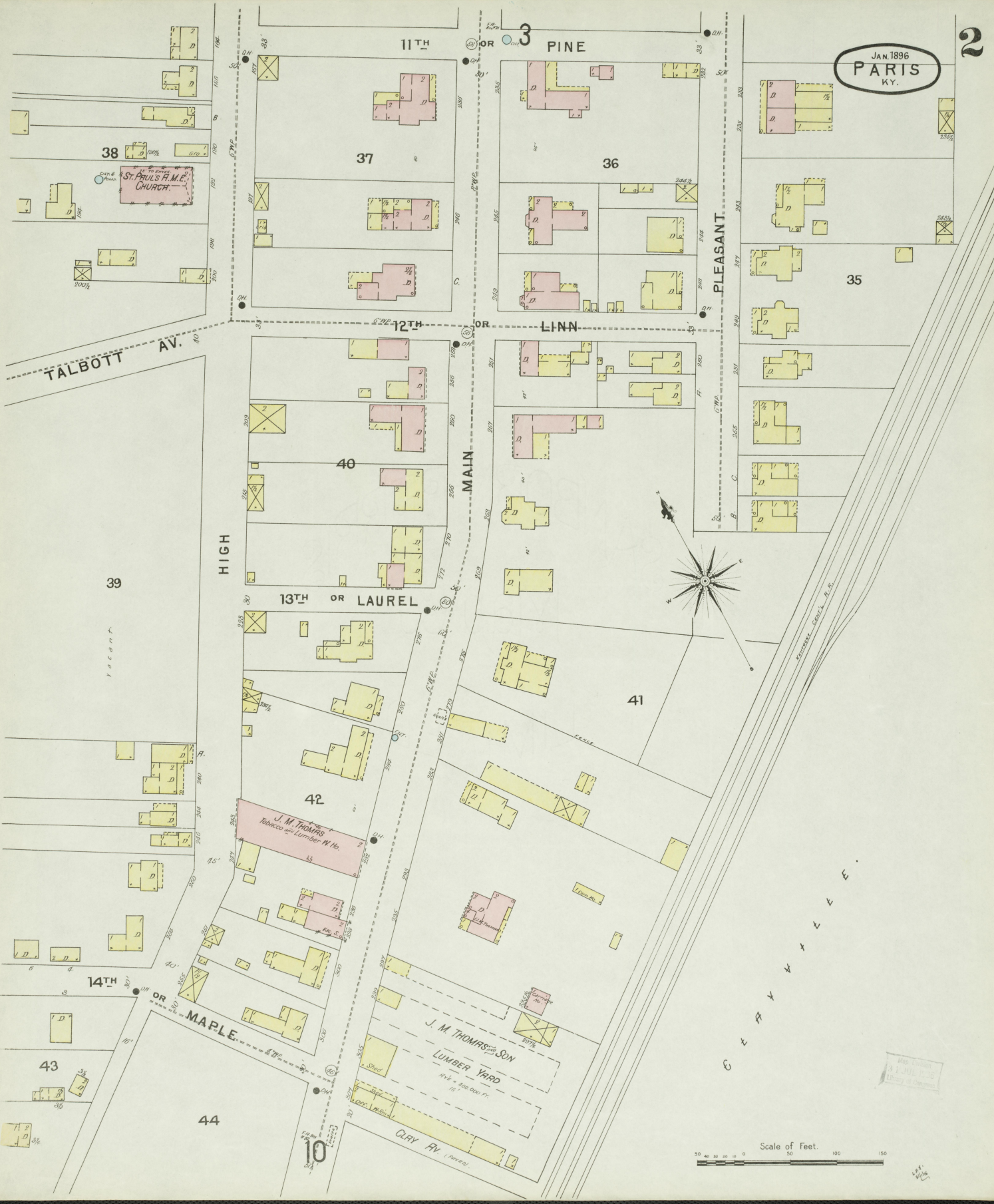
* Indicates only one side of Street shown.



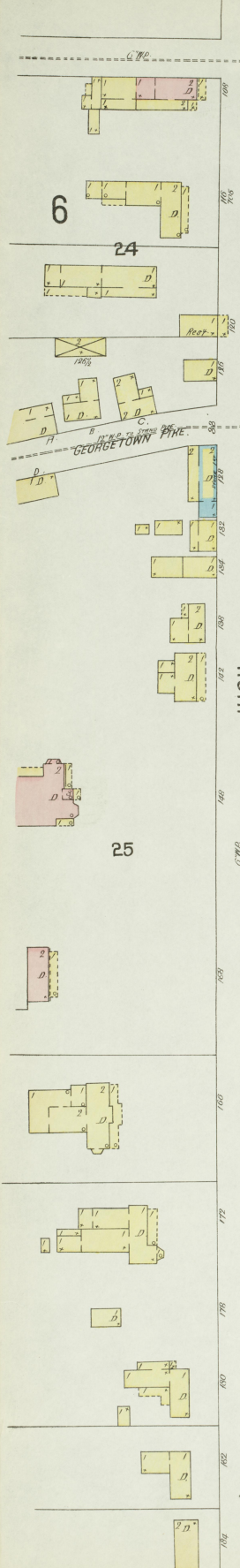
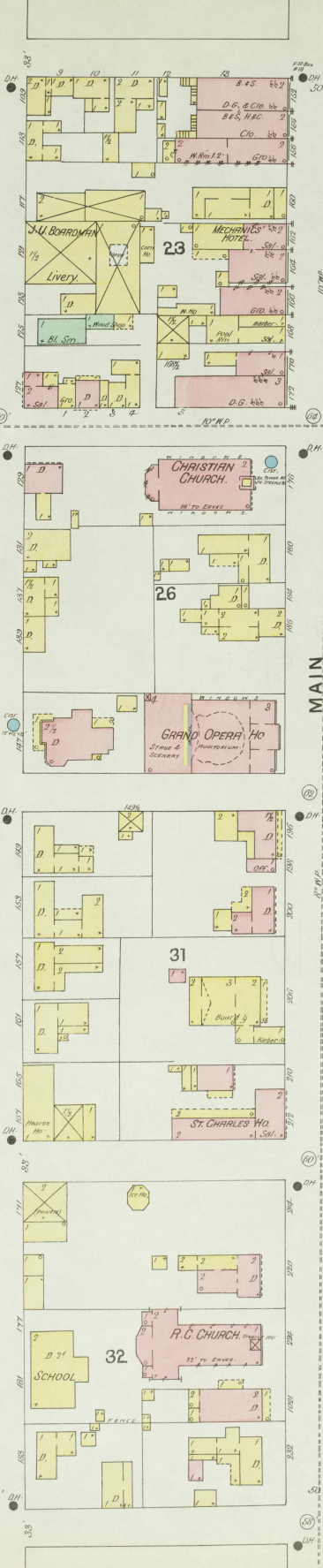
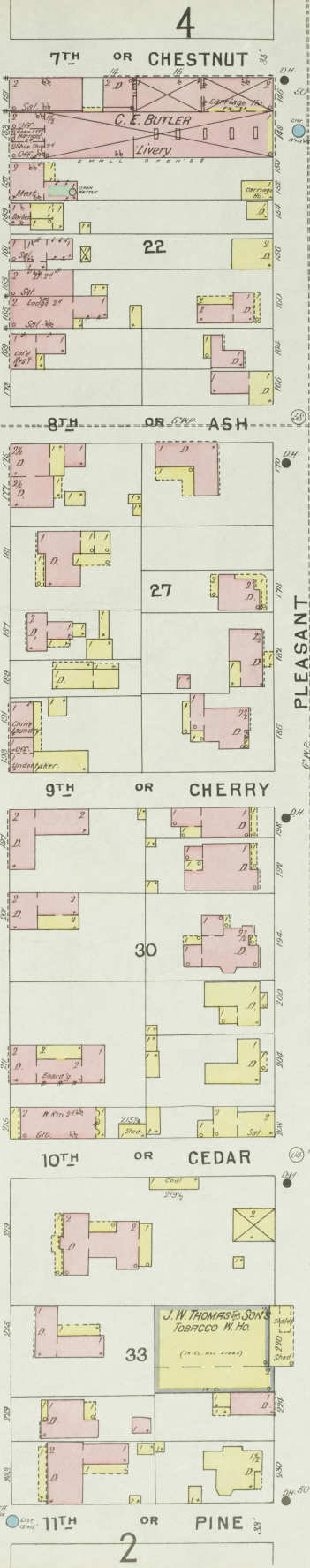
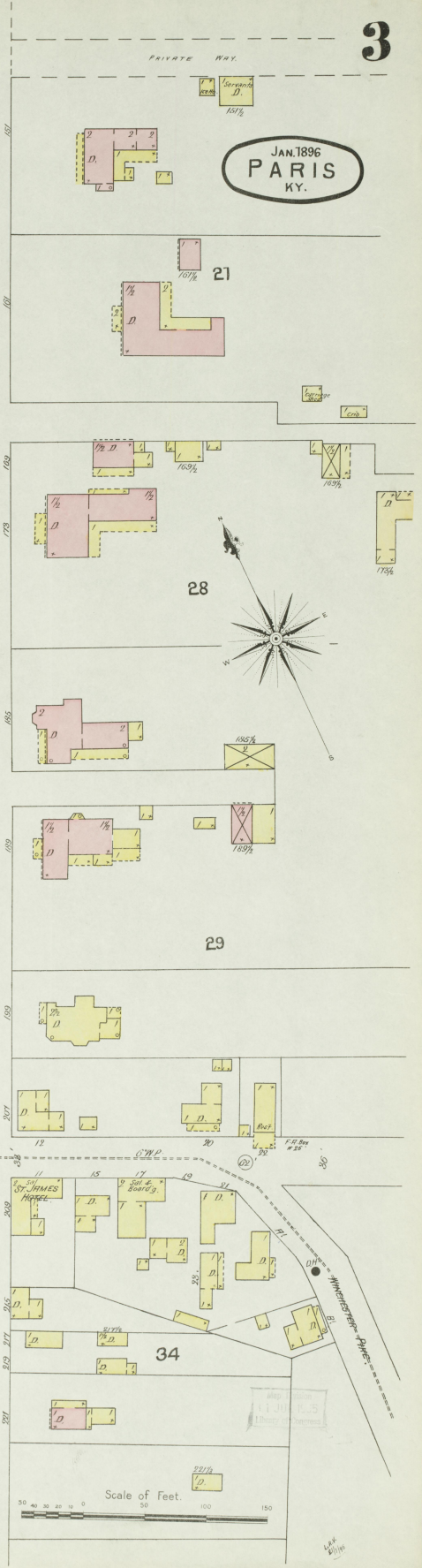
KEY
 FIRE MULL SIX AS ROOF
 12 - -
 13 - -
 14 - -
 15 - -
 16 - -
 17 - -
 18 - -
 19 - -
 20 - -
 21 - -
 22 - -
 23 - -
 24 - -
 25 - -
 26 - -
 27 - -
 28 - -
 29 - -
 30 - -
 31 - -
 32 - -
 33 - -
 34 - -
 35 - -
 36 - -
 37 - -
 38 - -
 39 - -
 40 - -
 41 - -
 42 - -
 43 - -
 44 - -
 45 - -
 46 - -
 47 - -
 48 - -
 49 - -
 50 - -
 51 - -
 52 - -
 53 - -
 54 - -
 55 - -
 56 - -
 57 - -
 58 - -
 59 - -
 60 - -
 61 - -
 62 - -
 63 - -
 64 - -
 65 - -
 66 - -
 67 - -
 68 - -
 69 - -
 70 - -
 71 - -
 72 - -
 73 - -
 74 - -
 75 - -
 76 - -
 77 - -
 78 - -
 79 - -
 80 - -
 81 - -
 82 - -
 83 - -
 84 - -
 85 - -
 86 - -
 87 - -
 88 - -
 89 - -
 90 - -
 91 - -
 92 - -
 93 - -
 94 - -
 95 - -
 96 - -
 97 - -
 98 - -
 99 - -
 100 - -

JAN. 1896
PARIS
KY.

2



JAN. 1896
PARIS
KY.



Scale of Feet.
0 50 100 150

JAN 1896
PARIS
KY.

4

6

20

19

CHESTNUT

LOCUST

MULBERRY

CHURCH

HIGH

MAIN

PLEASANT

3

7TH

6TH

5TH

4TH

5

15

13

11

16

14

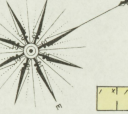
12

18

17

10

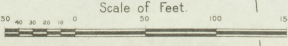
DUNCAN AV.



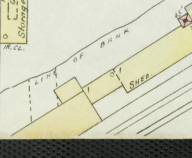
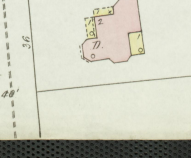
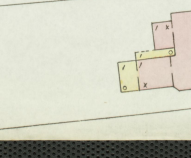
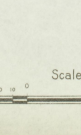
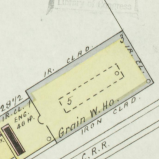
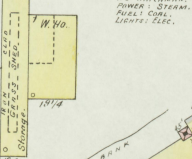
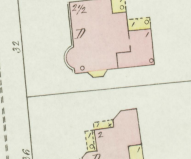
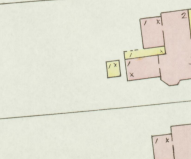
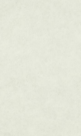
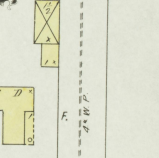
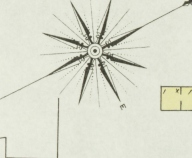
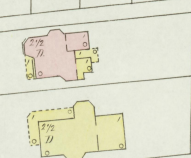
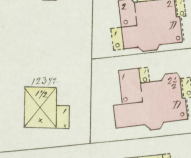
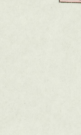
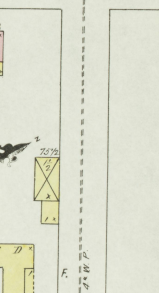
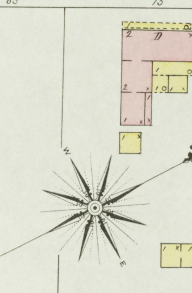
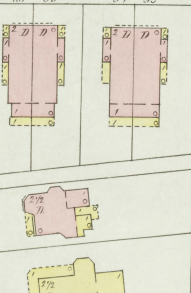
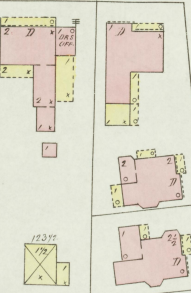
CHRIS. S. BRENT & BRO.
GRAIN & SEED W. HO.

VIA MATCHLESS
POWER & STEAM
PULVERIZERS
LUMBER & ETC.

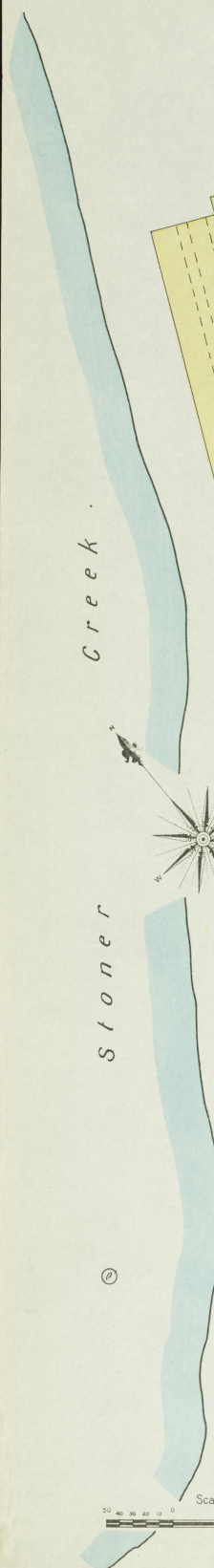
GRAIN W. HO.
K.C.R.R.



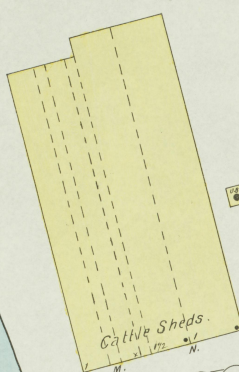
PRIVATE DRIVE



JAN. 1896
PARIS
KY.

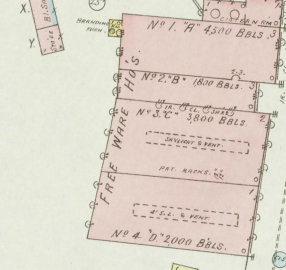
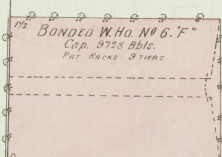
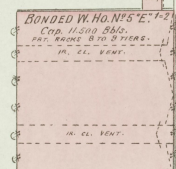


Stoner Creek



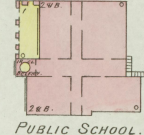
G. G. WHITE CO.
CHICKEN COCK DISTILLERY.
Registered Distillery No. 14.
7th Dist. Bourbon Co. Ky.

MASH 600 BUS. PER DAY. YIELD 87 BALS. PURTY.
MASH & STILLER WORKING.
CLEAN & SPARKING PLANT.
STILLER, 1000 GALS. CAP. 175°.
300° 174° WOOD. LIGHTS:
1000 174° WOODS.



MAYSVILLE & LEXINGTON PIKE

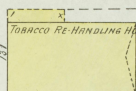
HENDERSON



PUBLIC SCHOOL.

A 1/3

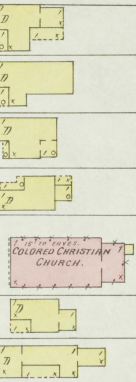
BRENT



TOBACCO RE-HANDLING BLDG.

A 1/4

FERGUSON



COLORED CHRISTIAN CHURCH.

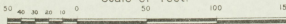
20

3

4

HIGH

Scale of Feet.



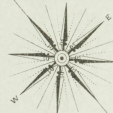
NO EXPOSURE.

BOURBON STEAM LAUNDRY.

POWER: 1000.
LIGHTS: 100.
CAP. 24 H.

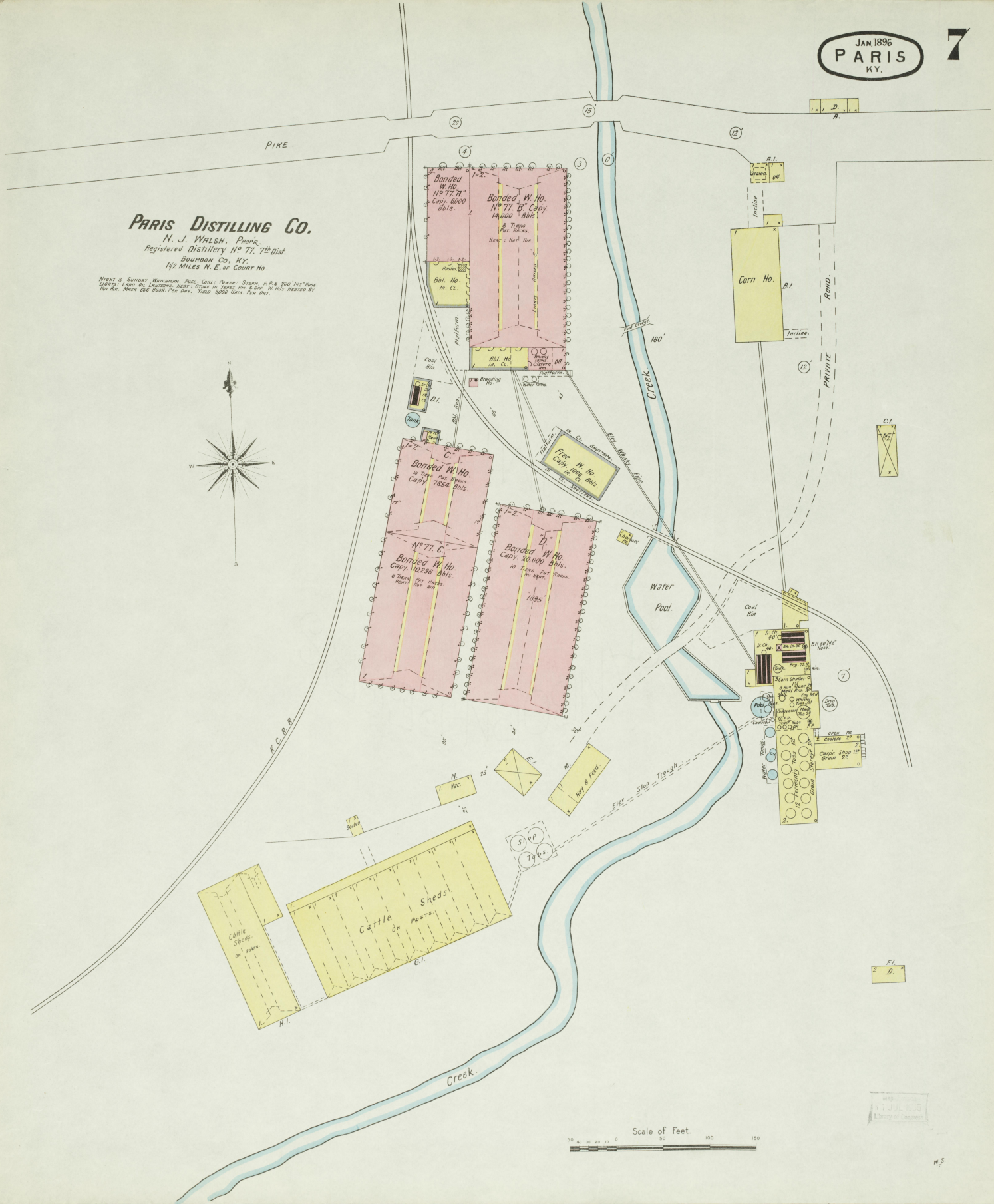
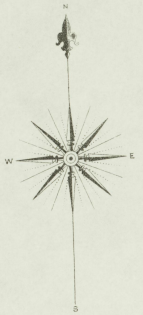
PRIVATE ALLEY.

NO EXPOSURE.



PARIS DISTILLING CO.
N. J. WALSH, PROP.
Registered Distillery No 77, 7th Dist.
BOURBON Co., KY.
1 1/2 MILES N. E. of COURT HO.

HEAT & SMOKE WATERMAN: FUEL, COAL, POWER: STEAM: F. P. & 200' HIG. HALL.
LIGHTS: LAMP, GAS, ELECTRIC; HEAT: STOVE IN YARD, 10' x 6' 6". W. HALL HEATED BY
HOT AIR. MECH. 250' DIA. PER DAY. VISC. 3000 GALS. PER DAY.

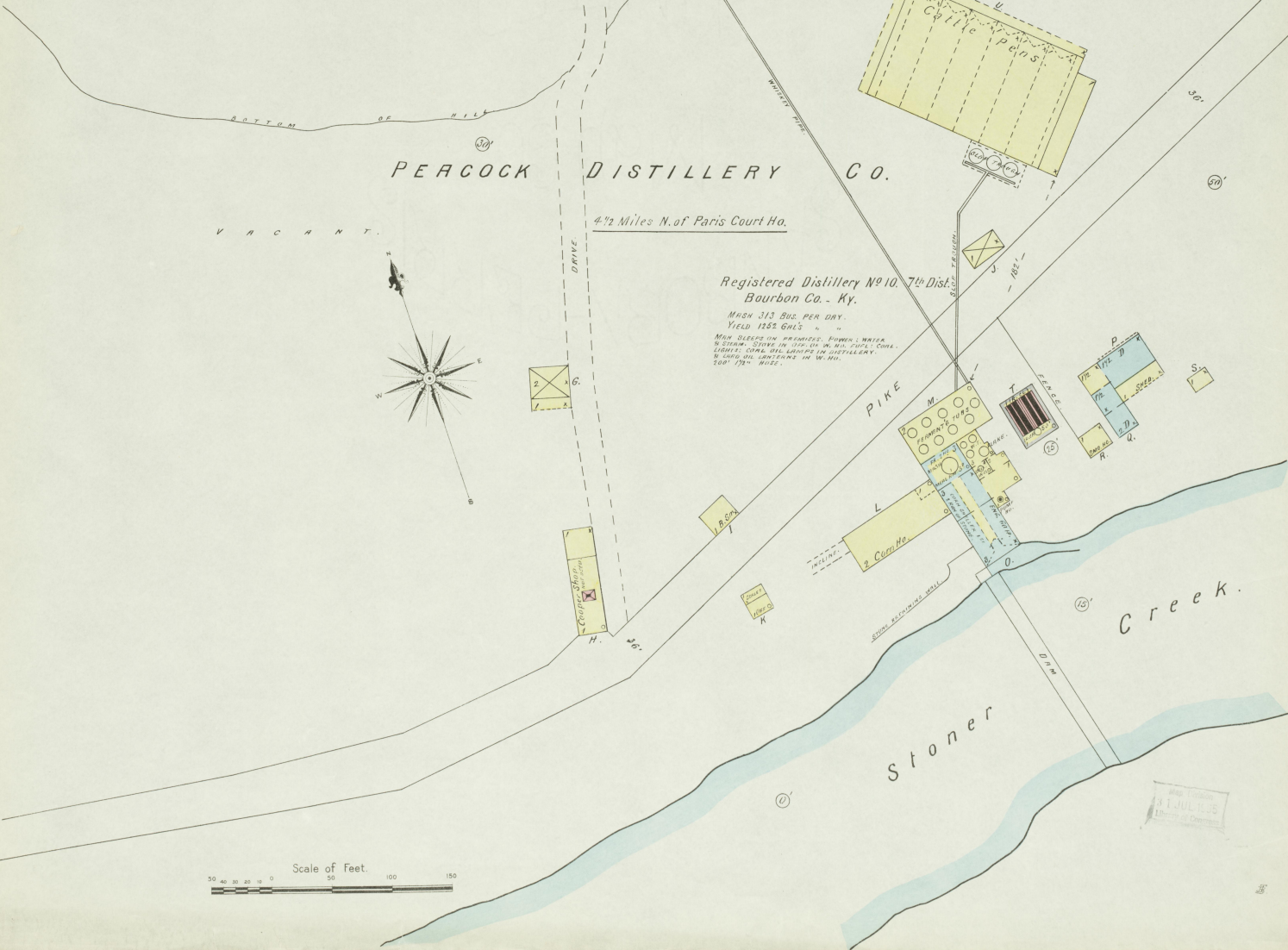
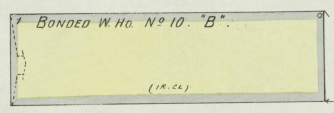


Scale of Feet.
0 50 100 150

N O E X P O S U R E

N O E X P O S U R E

V A C A N T



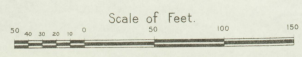
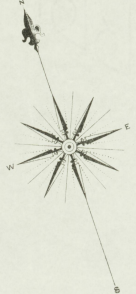
PERCOCK DISTILLERY C O.

4 1/2 Miles N. of Paris Court Ho.

Registered Distillery No. 10, 7th Dist.
Bourbon Co. - Ky.

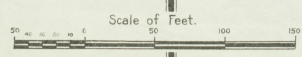
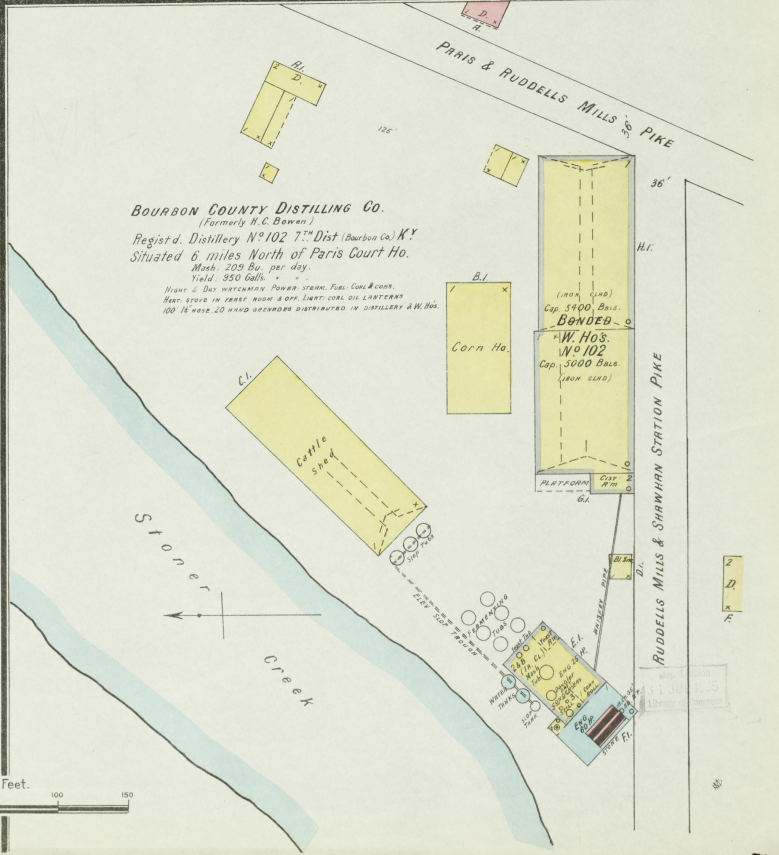
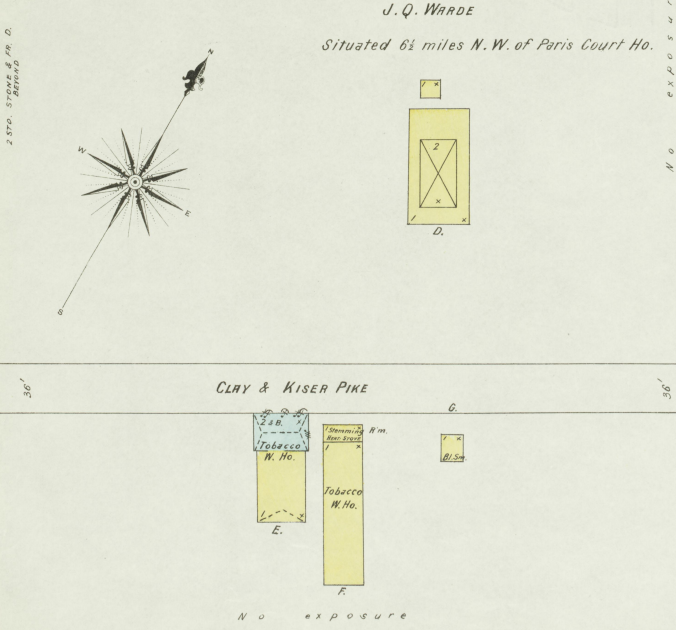
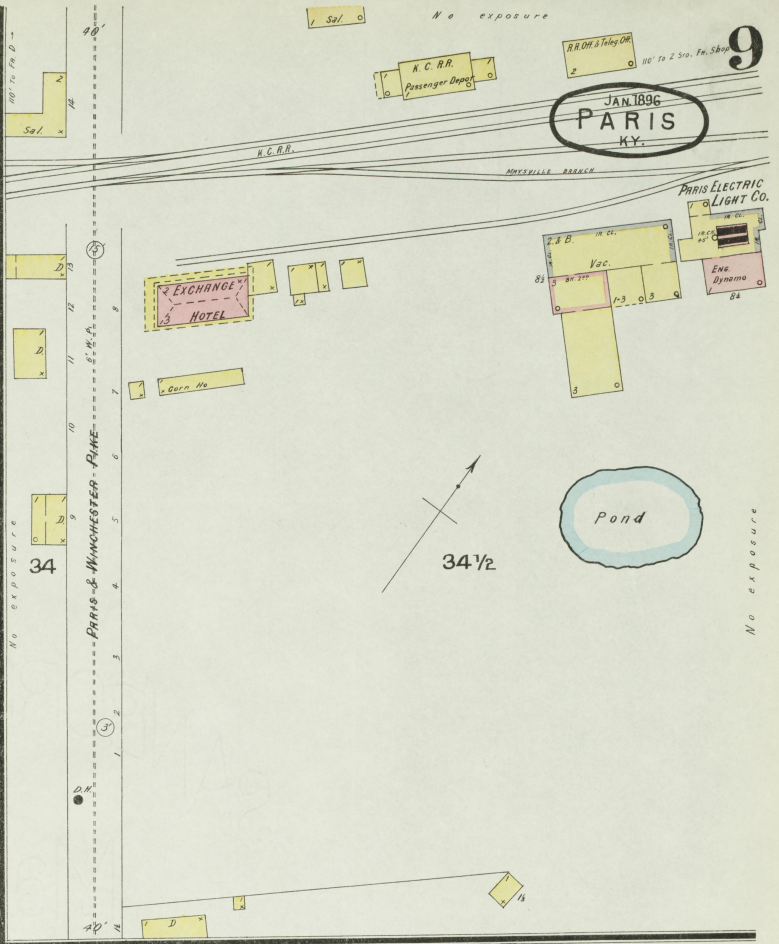
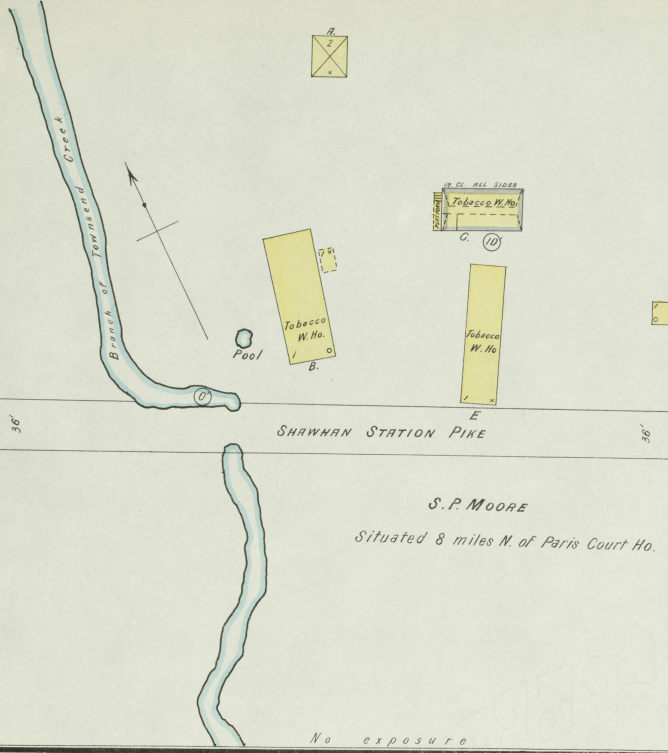
MASH 313 GALS. PER DAY.
YIELD 1352 GALS. " " "

MASH SLEDS ON WHEELS; POWER; WATER
W. STEAM; STONE W. 312 IN. W. 800; COILS
LIGHTS; SOME USE WINDS IN DISTILLERY.
W. 100 GALS. WINDS IN W. HO.
100' 72" HOSE.

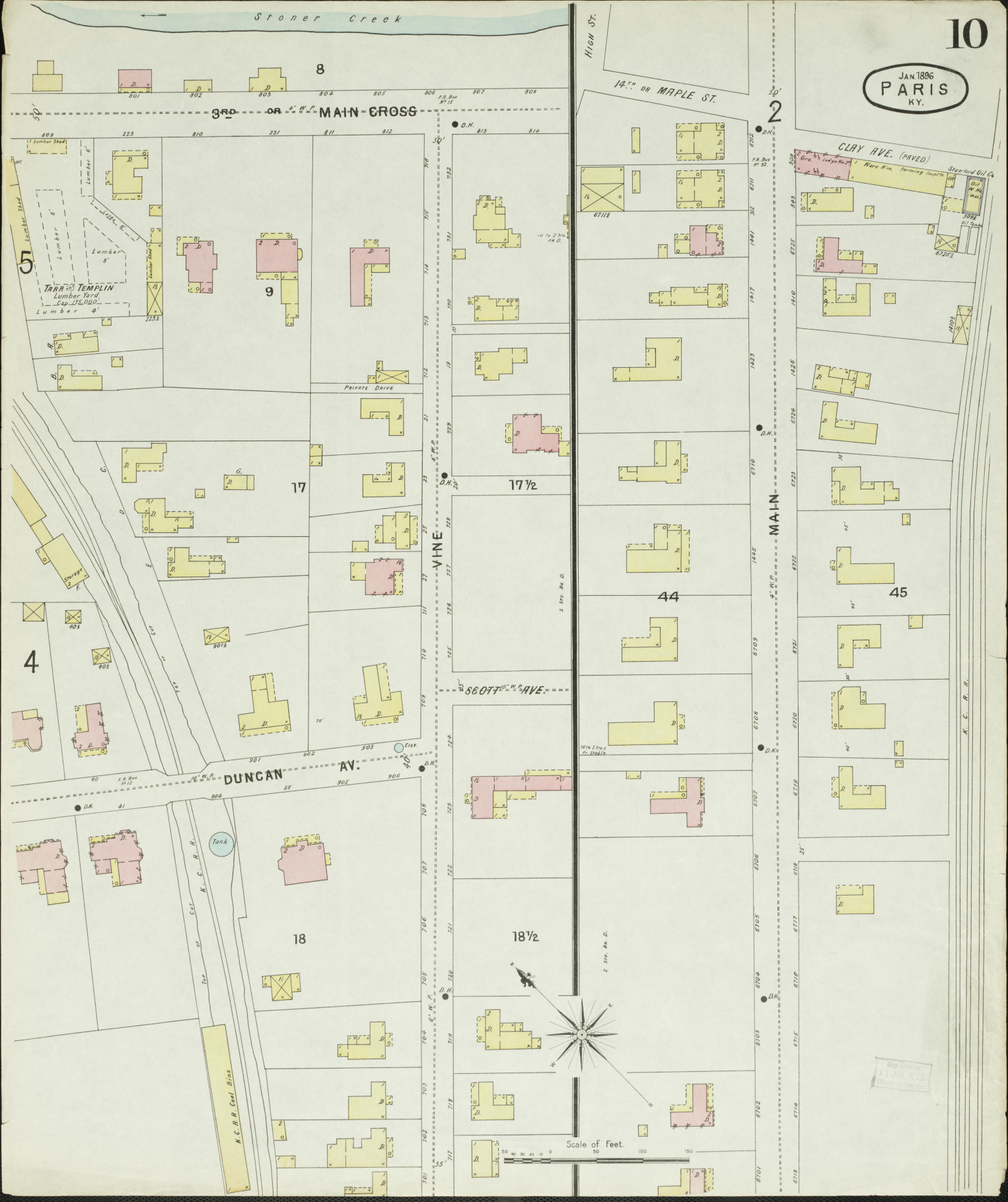


Wm. T. Atchley
Surveyor & Engineer

JAN 1896
PARIS
KY.



JAN 1896
PARIS
KY.



3RD OR MAIN-CROSS

VINE

MAIN

DUNCAN AV.

SCOTT AVE.

HIGH ST.

14th or MAPLE ST.

CLAY AVE. (PAVED)

K. C. R. R. Coal Bins

Scale of Feet.

K. C. R. R.

Map of Paris, Ky. 1896