

THE KENTUCKY KERNEL

UNIVERSITY OF KENTUCKY
LEXINGTON, KENTUCKY, FRIDAY, SEPTEMBER 25, 1942

ON PAGE EIGHT—
University Sports, Present and Future

ON PAGE TWO—
To the Freshmen— And Upperclassmen

VOLUME XXXIV 2346

APPOINTMENTS OF UK TRUSTEES ARE ANNOUNCED

Holmes Is Named Dean Of Women, Other Posts Filled

Mrs. Sarah B. Holmes, acting dean of women last year, was named permanent dean of women by the board of trustees on September 23 following the recommendation of President Donovan.

Dr. Donovan stated that Mrs. Holmes had served with distinction during the past year as acting dean and that she had measured up to the responsibilities of her office in every respect.

Appointments made by the board in the College of Agriculture and Home Economics included the following assistant home demonstration agents: Ella Landrum, Muehlenberg county; Frances P. Gladney, Hancock county; Gladys E. Hill, Christian county; and the following assistant county agents: Earl M. Bolin, Hickman county; Harry L. Copenhaver, Warren county; James Harris, Christian county; Bennet K. Brown, Warren county; and Prichard Knott, Christian county; Elmer L. Hixon, field husbandry, experiment station; Dr. Joseph C. Campbell, assistant veterinarian, experiment station; H. Dean Bunch, instructor in farm crops (temporary appointment); and Julia Wood, assistant in agricultural extension.

Prerequisites in the same college included the following: Ole Bernard, field instructor in horticulture in Warren county agent in Lincoln; Albert L. Isbarn, farm associate county agent in Davison county; and the following assistant county agents: Elmer Van Arsdale, farm associate county agent in Bourbon; Dorothy E. Hill, farm associate county agent in Union; Margaret Gully, farm associate agent in Franklin; full county agent in Letcher; Elizabeth Kennell, farm associate agent in Wayne; full-time agent in Anderson; Lorraine Harris, farm associate agent in Boone; and George H. Hurley, who has been assistant county agent in Fulton and Hickman counties, was transferred to Graves county. Leaves of absence were granted to Joseph R. McCord, county agent in Bullitt; and Charles E. Bortner, assistant agronomist at the Experiment Station, as they have entered military service.

Robert M. Odear, assistant city corporation counsel, was appointed instructor in business law in the College of Law. Other appointments in this college included those of Ray H. Garrison, graduate assistant reader, and John F. Martin, graduate research assistant. In the college of Arts and Sciences, appointments included those of Mrs. Lucile Naff Clay, graduate assistant in English; Miss Louise Nabst, graduate assistant in philosophy; Miss Margaret Jarrell, part-time instructor in psychology; second quarter; Donald Irvine, instructor in English; Dr. C. B. Hamman, instructor in bacteriology; Alfred M. Reese, part-time instructor in physical education; Esther Bickett, part-time nurse in hygiene and public health; J. Munoz, junior technician in bacteriology; Mrs. Mildred Stanley, part-time secretary.

Fred R. McCrea, Elinor Cullison, Kathryn Morrison and Alice R. Weston, student assistants in zoology; Margery Thomas, graduate assistant in English; Dr. Henry Noble Sherwood, lecturer in political science; Dr. Charles Smith, associate professor in political science; Anna Jane McCloskey, part-time instructor in political science; Rosanna Blake, graduate assistant in political science; Miss G. M. McCreary, secretary in the physics department; Esther Montgomery, part-time nurse; and Elmer Glib, assistant football coach.

In the department of Extension, Minta Anne Hockaday was appointed assistant secretary in charge of the work of the Batciff Godfrey. Mrs. Bush Allen Gorman was named secretary to the dean of men to replace Dr. Dean Abel Adams, resigned. The title of Miss Anita Gardner, in the office of the dean of women, was changed from secretary to assistant.



JEANNETTE GRAVES will serve as president of the YW this year

Graves Is Elected President of YWCA

Jeannette Graves, arts and sciences senior from Lexington, has been elected president of the University YWCA for the present year, being chosen at a special business meeting of the YWCA board. She succeeds Mildred Murray Campbell, who recently resigned, did not return to school.

NYA PROGRAM CUT SHARPLY Demand Is Less, Says Dean Jones

NYA aid to students on the campus has been cut to less than half of last year's quota. Dr. T. T. Jones, dean of men, announced today. In comparison with last year's figure of 286 units of aid, the number has been cut to 109 for this year. Fifty-five men students and fifty-four women students will benefit from the program.

Concomitant with the cut in the amount of aid to be given this year is the decreased amount of money available for the program. The dean stated in explaining that the cut will not have a very great effect. He attributed the decrease in student demand to the loss of students and the better financial condition of students who probably would have sought help.

Dean Jones anticipates a problem in the assignment of NYA students to the different departments on the campus because the demand will greatly exceed the supply.

Entrance Deadline Wednesday, September 30, is the last day on which a student may enter an organized course, according to the registrar's office.

A fine of \$1 will be assessed for each day that a student is late for registration for a class beginning today.

Frosh Domes Must Be Covered, SGA President Announces

ANNEX OPENED FOR PAT HALL Overflow Housed At 273 South Lime

A new cooperative house and an annex to the women's residence halls have been opened by the University this fall in effort to house the overflow of students unable to be accommodated in the dormitories. In former years, according to Mrs. Sarah B. Holmes, dean of women, there were from 25 to 50 cancellations in reservations for the women's halls during the last week before the opening of school. This turnover, she stated, usually cleared any waiting list which might exist. However, this year, the cancellations in reservations were very few, necessitating the opening of two new houses.

Patterson Annex, 273 South Limestone street, was rented by the University late Friday afternoon, September 18. Mrs. Holmes said. Ten workers were employed Saturday morning to clean, and furniture was arranged that afternoon in order that students might move in Sunday.

The house, which accommodates 12 girls, is considered a new section of Patterson Hall. Only freshmen and sophomore women will reside there. Residents have their meals in the dormitory dining rooms and abide by the same regulations as the dormitory women.

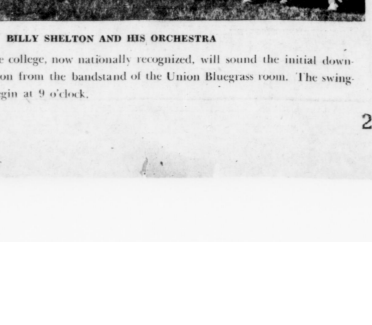
Hamilton House, located next door to Patterson Hall on South Limestone street, is the third cooperative house to be established at the University. It houses 18 women and the housemother, Mrs. Sarah Just, Midway. Most of the residents are home economics students. The house was purchased by the University and was completely redecorated and is completely ready to move in Sunday.

Freshmen Can Play On Varsity Teams

In an all-out effort to make regular training available for the many graders leaving for military service, members of the Southeastern Conference have voted to make freshmen eligible for varsity competition. The action came last Friday in a meeting at Atlanta.

Shelton To Open New Dancing Season

formerly of the Murray State college, now nationally recognized, will sound the initial down beat of the 1942-43 season from the bandstand of the Union Bluegrass room. The swinging and swaying will begin at 9 o'clock.



BILLY SHELTON and HIS ORCHESTRA

Frosh Story No. 1

Freshman blunder number one for this year concerns a young man in the campus postoffice. Said student purchased a stamp, placed the stamp on a letter, and deposited the letter in the nearest trash can.

Then, realizing his error, and with some embarrassment, he opened the trash can, procured his letter, deposited it in the correct letter slot, and slunk out rather sheepishly. "O my my! But you were a freshman one too."

TRIGG TO DIRECT UNION COMMONS U. K. Graduate Succeeds Limbach

Miss Jennie Mae Trigg has been selected as director of the Student Union commons and grill to replace Miss Alberta Limbach, who resigned in order to give full time to her work as director and manager of the residence halls for the month of September. Miss Trigg, who will act as assistant to Miss Limbach until the first of September, is a member of Phi Upsilon Omicron, home economics honor. After her graduation she taught home economics in Newport for a year. She was worked as assistant director of the cafeteria at Eastern State Teachers' college at Richmond and as dietitian at the Owensboro hospital.

Miss King was dietitian in a college at High Point, North Carolina, before coming here. She has also acted as dietitian at the Margaret Hill School for Girls in Versailles. During the next coming year, she will work on her masters degree at Columbia University.

Miss Limbach assumed her duties as director of the cafeteria and grill in January, 1941, when the University took over the management of the YM-YWCA. Before coming here she had worked as a contractor, but did not lose money during the past year as it had in previous years. Her work has been based on a non-profit basis for the benefit of the University students. Business is greatly increased this year, the contractor stated.

New schedules for the cafeteria have been announced as follows: Breakfast—7:15 to 8:45 a.m. Lunch—11:30 to 1:00 p.m. Dinner—3:30 to 6:30 p.m. The grill will be open from 8 a.m. until 3:30 p.m.

Former UK Students Advance At Army Air Force Bases

Press releases from flying fields and training stations over the nation reveal that former University students are advancing in all branches of the armed forces. First Lieutenant Oscar Monroe Corbin, class of '40, has recently been assigned for duty with the new Army Air Force flexible young school located at Ft. Myers, Florida. Lt. Corbin was a member of Alpha Sigma Phi, Block and Bridge, and the varsity track team.

He was secretary of the Interfraternity council. After his graduation he joined the staff of the Agricultural Experiment station. He entered the army in March, 1941, as an aviation cadet and was commissioned a second lieutenant in December of that year. Pilot Cadet Thomas Bain Cullow, Corbin, was recently commissioned a second lieutenant in the Army Air Force at Turner Field, Albany, Georgia. Turner Field is an advanced flying school in a group of air bases which comprise the Southeast Army Air Force Training Center, which is being determined during this year and the next.

Whether you are to be a slave of a freeman, you must be prepared to be called to take your place in it. It is incumbent that you prepare yourself to be effective in this conflict. H. L. DONOVAN, President of the University

Enrollment Decreased As 2040 Are Registered

Registration Closes On September 30, 687 Frosh Enroll

Registration figures show that 2040 students had enrolled in the University at noon yesterday, including the 687 freshmen who registered during the first day. Upper classmen whose names begin with H through L, and a miscellaneous group of late students registered yesterday afternoon but no figures were available at press time.

Decrease in enrollment over last year was expected and Wednesday afternoon's total of 1173 compared with 1441 who had registered during a similar period last year. These figures are not strictly comparable, however, since they represent different letter groups. Several hours a day will be devoted to registration until September 30, the last day on which a student may enter an organized class, it was announced from the office of the registrar.

War Literature Centralized In Key Center Of Information

Civilian Defense, Labor Problem Materials On File

For information on the war effort, government bonds, labor problems, prices, civil liberties, national and civilian defense, location of battle areas, and the organization, regulations, and insignia of the service branches, Room 143 of the Library has been opened as the War Information Library. The center, which is open from 8 to 4 on weekdays and until noon Saturday, contains approximately 1200 pamphlets on 100 general subjects. There are clippings from newspapers and magazines, posters and maps. Pictorial illustrations of Russian and British weapons, British battle dress, aircraft recognitions, and Chinese cadets may be found on the reverse of many of the large maps. Recent or unusual items are displayed in the wall case in the hall opposite the center.

The collection of material has been developed largely through gifts. Since the University is an official Key Center of Information, a fairly large collection was received from the United States government and about 50 other organizations publishing authoritative material. Individual items have been added through solicitation by Miss Norma Cass, secretary of the Key Center.

Old Kernal Staff To Hold Meeting

All students who worked on the editorial or reporter staff of the Kentucky Kernal during the second semester of last year or during the summer session are requested to meet at 10 a.m. tomorrow in the Kernal news room. A meeting will be held later in the week for students wishing to work on the Kernal who have never been members of the staff, it was announced.

Freshman Club To Meet Tuesday

The Freshman Club, a sub-division of the YM-YWCA, will hold its first meeting at 7 p.m., Tuesday, in the Y lounge of the Student Union building. Both men and women first-year students are invited to join the group which meets weekly during the school year.

Deputy Collins and Walter Leet are to be the advisors for this year. The program Tuesday night will be followed by games and group singing, according to Miss Rosalie Oakes, YW secretary.

Joint Board Will Explain Reserve Plan Army, Navy, Marine Representatives Here September 28

A Joint Army, Navy, Marine Corps board consisting of five members will visit the campus on September 28 and 29 for the purpose of explaining the Enlisted Reserve Corps plan. A Joint Army, Navy, Marine Corps board consisting of five members will visit the campus on September 28 and 29 for the purpose of explaining the Enlisted Reserve Corps plan.

CHAMBERLAIN APPOINTED DEAN UK Registrar Succeeds Hill

Dr. Leo M. Chamberlain, registrar since 1937, has been appointed dean of the University. He replaces Dr. Henry H. Hill who resigned to accept a position at Pittsburgh, Pa., as city superintendent of schools. Dr. Chamberlain will occupy both positions for the present. After the war, if the student enrollment increases and his duties multiply, he will be permitted to drop his registrar's duties, authorities stated. The new dean became a member of the University faculty in 1929 as professor of education. He was formerly director of the University Bureau of School Service. Dr. Chamberlain is president of the Lexington Kiwanis club, the University Research club, and the American Educational Research club. He is editor of the American Association of Collegiate Registrars Journal.

Kampus Kernels

GERMAN... appointment classes will meet at 4 p. m. Monday in room 304 of the Administration building. FELLOWSHIP GROUP... of the First Methodist church will hold their opening meeting at 6 p. m. Monday in the club basement. All University students are invited to attend. REYOUTS... for roles in Chinua will be held from 8 to 9:30 p. m. at the Guilford theatre. ALL UNIVERSITY... Dance will be held from 9 to 12 tonight in the Bluegrass room of the Union building.

McVey To Speak

Dr. Frank L. McVey, president emeritus of the University, will be the principal speaker Sunday night at the Westminster Fellowship Forum of the Maxwell Presbyterian Church. The forum meeting, a supper to be held at 6:30 p. m. in the church will be led by Robert Davis, president. Faculty and student members will attend.

THE KENTUCKY KERNEL
 "STUDENT OWNED AND OPERATED"
 —MEMBERS—
 Kentucky Intercollegiate Press Association Lexington Board of Commerce
 Kentucky Press Association National Editorial Association
 National Advertising Service, Inc.
 420 MADISON AVE. NEW YORK, N. Y.
 Chicago - Boston - San Francisco
 Patricia Snider Editor
 Betty Jane Pugh News Editor
 Robert Conway Managing Editor
 Jay Wilson Business Manager
 SUBSCRIPTION RATES
 One Year—\$2.00 One Year
 All news articles and columns are to be considered the opinions of the writers. Democrats, and do not necessarily reflect the opinion of the Kernel.

O.K., Frosh, It's Up To You

To the Freshmen of the University of Kentucky: You are on your own now. The most of you are not living at home any more, and although home may be only a few miles away—or a thousand miles—it is up to you now. You must do your own thinking and your own acting, preferably in that order. No one is going to do it for you.
 No one can make you do anything you don't want to do. You have the alternative of obeying the rules of the University or getting out. Your friend Butch can't make you go out on a binge the night before final exams, if you don't want to go. Or if you want to make hoop-la no one here can keep you from it.
 You can go straight to hell on a platter or to heaven in a halo here at the University and no one can keep you from doing it except you. There will be good advice offered and a friendly hand given by one set of people, but they cannot make you take it. Or the push in the wrong direction may be given, but you can pull a mule cart and not budge an inch.
 The professors are willing and anxious to help you any time that they can, but you are going to have to go to see them. They simply cannot chase all over the city of Lexington just to find out why little Herbert has not been handing in his assignments.
 Then there is the matter of cutting classes. The University rule is that a student cutting more than one fourth of the meetings of a given class has forfeited his right to take the final examination in the course. And try passing a course without taking the final. Other than this the professors vary as to the decisions on class cutting. Some lower the grade for every cut, others don't care whether you come or not—as far as grades are concerned, and others think that three cuts is enough for any student.

Gehrig's Life Showing At Kentucky

Talkie Talk—By Pat
 Stron Bob Messel and Bill Dickey, Douglas Croft plays the boy Gehrig, and Walter Brennan is cast as Gehrig's newspaperman—sponsor, Sam Blake.
 Although baseball forms the colorful background of the picture, that background is merely incidental to the human story of Lou Gehrig and his remarkable career, told with the wealth of detail and accuracy that makes the picture a genuine personal document.
 A Samuel Goldwyn production, directed by Sam Wood, it is a must picture for old and young alike.
 At the Ben All, starting tomorrow night with a midnight show, Mickey Rooney, the typical American boy, gives up dreams of Notre Dame and becomes "A Yank at Ebbets" when his mother marries an Englishman.
 Retelling against the age-old tradition of the institution, he tries to introduce American methods which fall to win the approval of head master of classmates. At home, he is slow to realize that his step-father is a kindly man. The result of this conflict of ideas will be found in the picture show itself, not on the pages of a newspaper.
 "Far better is it to dare mighty things, to win glorious triumphs, even though checked by failure, than to rank with those poor spirits who neither enjoy much because they live in the gray twilight that knows neither victory nor defeat."
 —Theodore Roosevelt
 World's highest capital is La Paz, Bolivia, which is situated high in the Andes mountains.

WAR DISCUSSIONS WILL BEGIN SOON

The weekly discussion of the world which all the participants see eye to eye on a subject, and in some of the Union forum committee and the University women for defense committee will continue this fall. This fall that included three faculty members and one student drawn from different departments.
 The discussion takes the events that of the week as regards the military, or economic news of the war and each member states his views on the subject and strives to understand them in the face of opposition. There has never been a panel in University.

Complete Line of Sheaffer Pens and Pencils at Campus Book Store
 Welcome, Students!

WE WANT YOU FOR YOUR PAST PATRONAGE AND INVITE YOU SOON TO YOUR WAY OVER TO ROSE STREET CONFECTIONERY
 Rose and College View
 SANDWICHES • SOFT DRINKS
 SHORT ORDERS
 EXCELLENT CURB SERVICE PHONE 2116

Students And The War

By JIM CARROLL
 Last September, when all were whistling "I don't want to see the world on fire" we were unpacked, the horizon carried a voice—became prophetic for the "real nerves" of Europe were beginning to spread their tingling sensations to this hemisphere but we were college students; we didn't give a damn.
 The school year ahead promised plenty of time to loaf, for fun, to play and work; the latter less appealing but we must have a goal and goals are worth working for even in the college world. And we never realized that there were so many "Brooklyn Fans" in the student body until the Dodgers began to rock the baseball world. Remember becoming wakened—happened up on 15-4 lead over Vanderbilt at ball time and how we went to the Cottage to drown our sorrows when the Commodores returned to the field and scored 33 points but Kentucky stood still—final results Ky, 15; Vandy 39.
 And then on Sunday morning, December 7, 1941 came this startling news "Japanese Forces Have Attacked Pearl Harbor."
 Well, you know as well as I what things have come to pass; many full-blown careers have been blasted as though they were soap bubbles; sons and husbands drafted and daughters, conscriptions of glory, sought, what seemed to be high-paying positions, in the shadows of our nation's capitol.
 We have these changes; they are not for us. Now the American youth is forced to look forward to a world in the throes of changes. As they try to keep their minds on their studies, the news of the world keeps breaking through. This they cannot shut out; the rhythm of marching feet, the roar of planes and tanks, the crashing of bursting shells and bombs and the omnipresent fact that they have a Local Board. While they prepare themselves for life in the world of tomorrow, they can form no clear perception of what that world will be like.
 Perhaps men have lived in a world of changes, but never in a world that changes as swiftly and as expeditiously as this one before the very eyes of every human being. The revolving changes are so that we are swept from our feet before we recognize them. Then it is too late.
 It is our tough luck that we were born twenty years too soon; that we must live our lives in this time of changes—rapid, unpredictable, challenging, disturbing and confusing.
 Now don't get us wrong; we're not crying; we're only flexing our muscles in preparation for a fight that must be won that the next generation here at Kentucky will not have to be bothered about carrying a draft card and the like.

Taxicabs! Phone 8200
 LEXINGTON YELLOW CAB CO.
 Incorporated

STATISTICAL LifeLines Feathertouch Ensemble, 114
 ANY MAIL FOR ME?
 SHEAFFER'S
 Note: Fuel all pens carefully. Sheaffer's SERIP is kind to the rubber and other critical parts of pens—makes all pens write better and last longer.
 SHEAFFER'S
 W. A. SHEAFFER PEN CO. PORT HADISON IOWA

THE UNIVERSITY OF KENTUCKY
COLONEL Of The Week
 Have you a grudge to be aired? letters, because they give the pulse A compliment to pay? Or do you of the student thought. Faculty think that the students are not taking letters. Many items have been cleared in the letters to the editor, because someone on the campus will have the answer.
 The Kernel is glad to receive the feet.
 A fathom, used as a unit of measurement in sea depth, is six feet.

IF YOU HAVE A GRUDGE WRITE TO THE KERNEL
 Have you a grudge to be aired? letters, because they give the pulse A compliment to pay? Or do you of the student thought. Faculty think that the students are not taking letters. Many items have been cleared in the letters to the editor, because someone on the campus will have the answer.
 The Kernel is glad to receive the feet.
 A fathom, used as a unit of measurement in sea depth, is six feet.

NEXT WEEK'S COMMITTEE
 George Barker, Chairman Martha Kopplus, Chi Omega
 George Dudley, SAE LeGrand Hatcher, Independent
 SERVING HOURS
 Luncheon 11:30 to 1:45
 Dinner 5:00 to 7:45
 Open Sunday 11:00 to 8:00

Glasses designed to add to your good looks
 When you have your eyes examined bring your prescription to us... where reliability and excellent quality work is combined with reasonableness of price and promptness of service.
 We do not examine your eyes... we fit your glasses to your Doctor's prescription.

Cedar Village Restaurant

Cromwell Optical Co.
 112 N. Upper Phone 654

WALK OVER TO **407 JONES 407** COME ON OVER
 Across from Student Union Building
 SANDWICHES
 Hamburger on Toasted Bun .10
 Cheeseburger .15
 Steak on Grilled Bun .15
 Ham Salad .15
 Pimento Cheese (Home Made) .10
 Frenchfurter (Grilled on Toasted Bun) .10
 Swiss on Rye .10
 Peanut Honey .10
 Grilled Ham on Toasted Bun .15
 Hot Bar-B-Q (on Toasted Bun) .15
 Chicken Salad .15
 Tuna Fish .15
 Goose Liver .15
 Bacon and Tomato .15
 Goose Liver and Swiss Cheese .20
 Tomato and Lettuce .10
 Ham (Home Baked) .15
 Ham and Tomato .20
 Ham and Cream Cheese .20
 Ham Salad and Tomato .20
 Olive-Tuna .15
 Egg (Sliced) .15
 Grilled Cheese .10
 Salmon Salad .10
 Chicken Salad and Tomato .20
 Bacon and Cream Cheese .20
 No extra charge for grilling if desired
 SPECIALS
 1. HAM (Home Baked) Potato or Combination Salad .30
 Potato Chips
 2. ASSORTED COLD CUTS Potato or Combination Salad .30
 Potato Chips
 3. SALMON SALAD Sliced Tomatoes .20
 Potato Chips
 4. GRILLED PEANUT BUTTER and HONEY SANDWICH Sliced Tomatoes .20
 Potato Chips
 5. CHILLED FRUIT PLATE .25
 Potato Chips
 6. BACON & TOMATO SANDWICH Potato or Fruit Salad .30
 Potato Chips
 7. TOMATO STUFFED WITH CHICKEN or TUNA FISH SALAD .25
 Potato Chips
 A LA CARTE SALADS
 Tomato and Cabbage Salad .15
 Combination Vegetable .15
 Potato and Cabbage .15
 Tomato and Lettuce .15
 ICE CREAM AND SOFT DRINKS
 Want Some FUN?
 1800 Records on our Juke Box
 Let's Dance Chillun! Let's Dance!!
 DANCE **407 JONES 407** SOUTH PLAY CARPET GOLF LIME

Kappa Sig Rushes

Kappa Sigma entertained with a Monte Carlo party Monday night at the chapter house. The house was decorated in scarlet, green and white, the fraternity colors. Games consisting of a crap table, dice, cards, roulette wheel were played during the evening and script money was used. Jack Hill was in charge of the affair and Mrs. J. P. Jones chaperoned the party.

Tuesday, the fraternity honored the rushes with a dinner at the Lexington Country Club followed by a house dance at the chapter house. Bill Jordan and his orchestra played for the party. Mr. and Mrs. H. A. Sawin were the chaperons.

A house party was given Wednesday night and a steak fry was given in honor of the rushes Thursday at Camp Driftwood on the Kentucky river.

A convoy party will be given by the fraternity Friday. There will be a tour of various amusement places ending with songs at the chapter house.

KA Activities

The Kappa Alpha fraternity is entertaining this week with a series of rush parties in honor of the new pledges and rushes.

Monday the fraternity honored the rushes with a dinner followed by dancing at Joyland with Richard Daniels in charge of the arrangements. A formal dinner and house dance was given Tuesday. The house was decorated with crepe paper and balloons forming a false ceiling. The plans were made by Richard Daniels. Nelson Woolcott was in charge of a dinner Wednesday followed by a skating party at the Bollarena. Kappa Alpha entertained with a buffet supper and house dance Thursday with Nelson Woolcott in charge. A smoker has been planned for tonight.

House Dance

Kentucky chapter of Triangle honored a group of rushes with a house dance Tuesday. Melvin Sigman, rush chairman, made plans for the affair. Mr. and Mrs. E. B. Farris chaperoned the party.

Tinder-Box



Many dangerous blazes start in closets, so it's foolhardy to carry a lighted cigaret while poking about in closets filled with inflammable articles.

Formal Teas Highlight Sorority Rush Program

KD's, AD Pi's, Kappa's Give Initial Functions

Sorority rushing opened Tuesday afternoon with teas given by Kappa Delta, Alpha Delta Pi and Kappa Kappa Gamma sororities from 4 to 7 o'clock.

Alpha Gamma Delta, Chi Omega, and Delta Delta Delta sororities gave teas from 3 to 6 o'clock Wednesday and Alpha Xi Delta and Zeta Tau Alpha entertained on Thursday from 3 to 6 p.m.

Kappa Kappa Gamma gave a Cruise party at the chapter house. Garden flowers in pink and lavender decorated the house. Lobby Lewis, Sue Ewing, Louise Milward and Martha McCauley wore sailor suits, and Elizabeth Hughes and Sue Pan Gooding wore grass skirts. Rushes entered the house by a gang plank and were presented with anchor name tags and Hawaiian leis.

Punch and cookies were served during the afternoon. In the receiving line were Mrs. George Newman, housemother, Sara Ewing, rush chairman, Ethel Cogar, president, and Louise Wilson, summer rush chairman. They wore corsages of gardenias. Mary K. Scott was in charge of the arrangements.

The Alpha Gams entertained with a general tea. Garden flowers decorated the sorority house. Punch and cookies were served during the afternoon. Juliette Bryson and Emmett Porter planned the party.

In the receiving line were Mrs. John Hagan, housemother, Barbara Rehm, president, Annette Kelley, president of Alumnae, and Jean Ray Crawford, rush chairman; all wore red rose corsages.

Chi Omega gave a Colonial tea with Edith Conant in charge. The house was decorated with fall flowers, and the table held a centerpiece of white carnations. The activities of the chapter were Early American costumes. Punch and cookies were served. Mrs. Fannie Bell Bogie, Martha Adams and Camilla Weathers were in the receiving line wearing white carnation corsages.

Tri Delta entertained with a Colonial tea. Fall flowers decorated the house and the activities were colonial dresses. Tea was served out of a block of ice and presented as mint juleps in silvercups with cookies.

In the receiving line were Mrs. Harry Lee, Marjorie Schwartz, and Julia Johnson wearing gardenias. Alpha Xi Delta entertained with a formal tea. Margaret Stokes was in charge of the party. The house was decorated with blue and gold asters, the sorority colors, and lighted tapers. Favors were leatherette date books of blue, embossed with the Alpha Xi Delta quill in gold. Harpist Bunny Boone, furnished the music during the afternoon. Mrs. Will Hughes, housemother, Betty Jane Pugh, president, and Jean Reynolds, rush chairman, formed the receiving line for guests.

AGR's Entertain

Rushes of Alpha Gamma Rho fraternity have been entertained this week with several parties. Monday night a stag party was held at the chapter house followed on Tuesday by a lawn party where a buffet supper was served. Flares and fall flowers were used as decorations. A smoker was given on Wednesday evening with honor guests being Professor and Mrs. Morrison, and Professor Ely. Thursday night entertainment was in the form of a hayride to Johnson's mill. A picnic supper was served and dancing furnished further entertainment.

A University of Oregon "athletic honor roll" shows more than 100 former Webfoot athletes now in the armed service of their country.

Sigma Chi's Rush

A movie, smoker, house dance, and steak fry at the Boots and Saddie Club in Winchester were included on the program of Sigma Chi rush parties for the week. A buffet supper will be held at the house tonight.

Vermont is the only state not represented by a student at the University of California this year.

U. of Ky. CO-EDS

WELCOME

to the Campus and to



We invite you to make our store your Friendly Downtown Headquarters.

BAYNHAM'S SPECTATORS

The pets of the Campus for over 25 years — there is no finer selection of spectators in the nation!



- 1—"AVON"—walled toe spectators of brown suede, with tan calf trim—high heel. \$6.95
- 2—"MARSHA"—classic wing-tip spectator in black or brown suede with calf trim—high or medium heel. \$8.95
- 3—"BEATRICE"—polished calf spectator—high heel in Pine Green, Kama Red, Town Brown or Black; also in brown suede with tan calf heel and toe. \$5.95

BAYNHAM SHOE COMPANY

135 EAST MAIN ST. also Louisville, Ky. and Nashville, Tenn.

FASHION TRIUMPH
Red Pencil...
by Charles of the Ritz

A very wearable true, pure red
[with no clashing blue or orange]
Crestlines to mar in clearest Checks
with every new fashion ensemble
Use RED PENCIL to flatter your smile — enhance your beauty — aromatize your ensemble

RED PENCIL Lipstick \$1.00 and \$1.50 with matching soap \$1.10 and \$2.00

Also comes in RED PENCIL K.O. Jumbo lipstick with matching Creamlip Vial \$2.50 complete.

Wolf Wile's

AD Pi Housewarming

The new home of the Beta Psi chapter of Alpha Delta Pi will be the location of several rush parties this week. Friday afternoon rushes will be entertained with a Josephine College party. Banners, pennants and bubble gum will add to the atmosphere. Cigarettes tied with the sorority colors creating diplomas will be passed out among the guests by an Alpha Delta Pi member in cap and gown. Cokes and Nabe will be served as the highlight of the evening.

Saturday a prisoners party will be held, highlights being an electric chair and chain gang. Pictures will be taken of each rushee together with her number as she enters. Pin wheel sandwiches and a striped motif will prevail together with the playing of the prisoners song.

The traditional formal black diamond coffee of Alpha Delta Pi will be held Monday evening. The table will be decorated with black velvet, the centerpiece being a diamond of white flowers. Individual corsages of white flowers will be given to each guest. Patsy Horkan, rush chairman, will be in charge of the affair.

Sigma Nu Gives Victory Party

The chapter entertained Monday night with a house dance. Punch and cookies were served, and Mrs. Drury, housemother, chaperoned the affair.

A victory party was given by Sigma Nu Tuesday night at the fraternity house in honor of the rushes and their dates. Refreshments consisting of palma cocktails, peanut butter and jelly sandwiches in the shape of a V and cheese sandwiches were served. Ken Gray played the piano during the evening.

The chapter honored rushes with a smoker Wednesday at the fraternity house and a house dance Thursday. Harold Lindsay is in charge of a steak fry for tonight.

Please Her With Delicious Meal At The Cottage

You will enjoy the good food in the cool atmosphere of Lexington's most popular spot.

128 EAST MAIN STREET

Canary Cottage

OPEN 11 A. M. to 11 P. M.

as seen in VOGUE

JACQUELINE Black or Pecan Brown Suede 6.95

CONNIE Black Suede "Platform" Sandal 5.95

CONNIE Military Tan Calf, Black or Brown Suede 4.95

CONNIE Military Tan or Black Calf 4.95

JACQUELINE Vinylite with Black Suede 7.95

CONNIE Military Tan Calf, Black or Brown Suede, 5.95

JACQUELINE Black or Brown 6.95

Names You Know! Shoes You Love!

4.95 to 7.95

Styled for a season of doing... these beautiful shoes are exhilarating no matter what the type! Walking... casual... tailored... or dress styles... of finest leathers... crafted with the perfection that discriminating women know and love! We show you only some of the styles in our fall collection... Come in to see and admire them all!

The Mitchell, Baker, Smith Co.
INCORPORATED

Zeta Tau Tea

The Alpha Chi chapter of Zeta Tau Alpha began the rush season with a formal tea Thursday afternoon in the newly redecorated chapter house at 365 Aylesford

Place. In the receiving line were Mary Lucille Horr, president, Mrs. J. M. Collier, housemother, and Florence Brown and Esie March, co-rush chairmen. Other parties will follow on Friday and Saturday together with a preference party on Monday afternoon.

Delta Delta Delta

Friday afternoon rushers of Tri Delta have been invited to a school days party, the old fashioned school house motif being carried out, together with lunch boxes filled with lemonade, sucker, apple, sandwich and bubble gum. Each girl will go through four classes led by Profs Peggy Lindsay, history; Wynette White, astronomy and Greek; Margaret Erskine, singing; and Marion Johnson, social studies. Saturday afternoon a Hell, Earth, and Heaven party will be given. The first floor will represent hell and tomato juice and a puppet show will be featured. The second floor will portray earth and a trio will adorn the entertainment. Salad and sandwiches will be served and red rosbuds given to each rushee. Heaven will be on the third floor of the house and a ritual will be held. The walls will be draped in white and organ music will prevail. Pineapple sherbet and white cake will be served.

Monday the preference party will be featured as a cabaret party with beer bottles, candles and Dora Peery as fortune teller. A floor show will be held with Peggy Lindsay doing a mock striptease and Nancy Shophire as a blues singer. Music will be furnished by a three piece orchestra.

Julia Johnson is in charge of the arrangements.

With 13 stations scattered throughout the state carrying the program, the University of Wisconsin band is in its fifth year of broadcasting concert music.

Rush Week Calendar

Monday

Sigma Nu—house dance
Kappa Sigma—Monte Carlo party at house
Alpha Gamma Rho—stag party
Phi Delta Theta—house dance
Sigma Alpha Epsilon—rush dinner
Kappa Alpha—dinner at house and dancing at Jostland
Sigma Chi—Sigma Chi movie at fraternity house

Tuesday

Phi Tau—weiler roast at Herrington Lake
Phi Delta Theta—smoker at house
Sigma Alpha Epsilon—dinner and dance at house
Sigma Nu—Victory party
Kappa Sigma—dinner at Lexington Country Club
Tri-Alpha—house dance
Alpha Gamma Rho—lawn party
Kappa Alpha—formal dinner and dance
Sigma Chi—house dance
Kappa Kappa Gamma—Cruise party
Kappa Delta—tea at chapter house
Alpha Delta Pi—formal fall tea

Wednesday

Sigma Alpha Epsilon—steak fry at Charles Michler's home followed by a smoker
Phi Delta Theta—dinner and dance at Lexington Country Club
Sigma Nu—smoker at chapter house
Kappa Sigma—house party
Phi Tau—dance at the fraternity house
Delta Delta Delta—colonial tea
Sigma Chi—smoker at fraternity house
Alpha Gamma Rho—smoker at chapter house
Alpha Gamma Delta—general tea
Chi Omega—colonial tea
Kappa Alpha—dinner at fraternity house followed by skating party at Rollarena

Thursday

Alpha Xi Delta—tea at sorority house
Sigma Alpha Epsilon—dinner at fraternity house followed by dance at the home of Bob Watts
Zeta Tau Alpha—formal tea at chapter house
Kappa Sigma—steak fry at Camp Driftwood, Clifton
Sigma Nu—house dance
Alpha Gamma Rho—picnic at Johnson's mill
Kappa Alpha—buffet supper and house dance
Sigma Chi—steak fry at Boots and Saddle club, Winchester

Friday

Kappa Kappa Gamma—style show in the Lafayette hotel ballroom
Delta Delta Delta—school days party at chapter house
Alpha Gamma Delta—Night club party at sorority house
Chi Omega—informal party at house
Alpha Delta Pi—Josephine College party at chapter house
Kappa Alpha—smoker at fraternity house
Kappa Sigma—Gimby party
Sigma Nu—steak fry on fraternity lawn
Sigma Alpha Epsilon—steak fry and smoker at chapter house
Alpha Xi Delta—cabaret party at sorority house
Sigma Chi—buffet supper at fraternity house

Saturday

Delta Delta Delta—Hell, Earth and Heaven party
Kappa Kappa Gamma—alumni party
Chi Omega—mock wedding at chapter house
Alpha Xi Delta—Collegiate party
Alpha Gamma Delta—Campus party at sorority house
Alpha Delta Pi—Prisoner party
Formal pledging of all fraternities

Monday

Alpha Xi Delta—Hawaiian party
Delta Delta Delta—cabaret party
Chi Omega—White tea at chapter house
Kappa Kappa Gamma—preference party
Alpha Gamma Delta—Rose tea at sorority house
Alpha Delta Pi—Black Diamond Coffee party

Tuesday

Formal pledging of all sororities

The first U. S. Marine to receive the Congressional medal of honor was Sgt. Pinkerton R. Vaughn in 1863.

Chi Omega Mock Wedding

Chi Omega will entertain with an informal party this afternoon. Punch and sandwiches will be served and bridge will be played during the afternoon. Camilla Weathers, Mary Bewley Steele and Marjorie Hunsinger are in charge of the arrangements for the party.

A mock wedding will be given Saturday at the chapter house by the Chi Omegas. The altar will be banked with ferns and cathedra tapers. The bride will come down the steps and enter the living room to the music of an electric organ played by Frances Spragens. The bride will wear a white organza dress and a finger tip veil, and her bouquet will be of gardenias, baby's breath and stephanias. The preacher will wear a tuxedo and the bridegroom will wear a military uniform. The two bridesmaids will wear yellow dresses and carry blue asters. A reception will follow immediately. The three-layer cake will be decorated with a miniature bride and bridegroom and will be cut with a saber. Elizabeth File, Mary Bewley Steele, Mary Varnon Gibson, Sarah Anderson, and Mary Beale Mylor are in charge.

Monday afternoon, the sorority will give a White Tea.

Sgt. Josiah Whitcomb commanded the first U. S. Marine corps guard aboard the first iron ship of the navy in 1844.

Alpha Gamma Delta

Alpha Gamma Delta will entertain its rushers Friday with a Night Club party. A bartender, floor show and checked cloths will reign. Refreshments will be hot dogs and cokes.

Pennants, banners and a football field will give the atmosphere of the campus party to be held on Saturday. Football games will be played and refreshments served.

A Rose Tea will be given Monday as their preference party. Barbara Rehm will preside as queen of the roses, Emma Bell Porter, Jerry Williams, Sarah Hogan and Virginia Walker will complete the court. A rose will be given each rushee as favor, and red and buff roses will decorate the house. Rose bud loes and cake will be served.

Try Our Chinese Food


Tasty American Luncheon Only 40c

WING'S

Corner Lime and Main

FLOWERS

Make an Evening an Event.




AND THEY ARE GAY FOR THE GAME!!

Say it with flowers, but . . . Say it with Ours!!

ASHLAND FLORISTS

636 E. Main Phone 453

YOU ARE INVITED TO




Purcell's

Purcell's is Lexington's largest department store— Located on West Main street— Whether you came from Podunk Junction— New York— or Chicago you will find your favorite brands of merchandise in our great store—as we carry practically all the better lines of Nationally Advertised merchandise—

We advise you to get the Purcell habit early, not wait till you're a Senior before you realize what you have been missing. . . . You'll find our courteous service a most encouraging reason for making Purcell's your down town headquarters.

PURCELL'S



Victuals WITH Vitamins FOR Victory

Student Union Cafeteria

SERVING HOURS

Breakfast	7:15 to 8:45
Lunch	11:30 to 1:00
Dinner	5:30 to 6:30

Welcome Students

We wish to take this opportunity to thank the old students for their splendid patronage and cooperation in the years gone by.

To the new students we look forward to a pleasant year serving, and trust that you will be as well satisfied as other patrons of the Studio.

Official Photographers For The Kentuckian

YOUR PRINTS ARE ALWAYS KEPT IN OUR FILES

Frames To Fit Any Picture

LAFAYETTE STUDIO


141 N. LIMESTONE

☆ Buy Defense Bonds and Savings Stamps ☆

George-Rex Beauty Salon

WELLINGTON ARMS APTS.
508 E. Main St.
Telephone 2550

Originators and Creators of the CURLY HAIRCUT AND BRUSH PERMANENT WAVE



MR. GEORGE
Famed Hair Stylist

Curly Haircut, Shampoo and Hairdo	\$2.00
Shampoo and Finger Wave	\$.75
Shampoo and Finger Wave by Mr. George	\$1.00

To introduce our well-known SALON to the teachers and students of the University we shall for two weeks give a beautiful permanent wave, haircut, shampoo, and hair-do for \$7.50.

This permanent is originally given for \$10.00. This offer will be good until the 15th of October.

AIR CONDITIONED

Kappa Sigs Escort Hollywood Star

Kappa Sigma actives and pledgees were awarded the honor of escorting Jane Wyman, Hollywood star, to the war-bond victory-luncheon held Tuesday at the Phoenix hotel. Jack Hill and Roger Cooper, Kappa Sigma actives, served as Miss Wyman's honor guard and were seated at the honor table, because their fraternity was the first to sell \$1,000 in war bonds. Lewis Swain, Kappa Sigma, act-

ed as chief announcer for the coast to coast broadcast. Plates at the luncheon were secured for \$1 plus the purchase of a \$100 war bond.

Miss Wyman arrived in Lexington at 12:15 and paraded through the downtown area in an open car. She was accompanied by Mr. Hill, Mr. Cooper, and her manager, Gabe York. After the luncheon she conducted a war bond rally in front of the court house.

TRY KERNEL CLASSIFIED ADS

Beans, the traditional Army food, reached a U.S. production record in 1941 of 18,226,000 hundred-pound bags.

Whalebone, once so valuable in commerce, has lost most of its value, due to manufactured substitutes.

University of Wisconsin has discovered a method of extracting vanilla, a vegetable product vanilla, from certain trees.

Phi Delta Theta

Phi Delta Theta entertained with a house dance Monday night and a smoker Tuesday at the house for a group of rushes. The Phi Deltas gave a dinner Wednesday at the Lexington Country Club followed by dancing at the house. The chaplains were Mrs. Walter Reed, housemother, Mr. and Mrs. Hal Tanner, Mr. and Mrs. John Greathouse and Mr. and Mrs. Louis Hillenmeyer, Jr.

Sigma Alpha Epsilon

A rush dinner was given Monday night at the house by the Sigma Alpha Epsilon fraternity, and a dinner and dance was given Tuesday. Charles Michler will entertain the S.A.E.'s with a steak fry and smoker Wednesday at his home. The rushesses will be honored with a dinner at the fraternity house followed by a dance at the home of Bob Watta. Windy Ellis, rush chairman, is in charge of a steak fry followed by a smoker tonight at the fraternity house.

PATRONIZE KERNEL ADVERTISERS

DANCE

To The Music Of
Billy Shelton

And His Orchestra



Semi-Formal

75c Drag or Stag

in the
Blue Grass Ball Room

of the
STUDENT UNION BUILDING

SATURDAY, SEPTEMBER 26
9:00 Till 12:00

Students Welcome



To you who are looking upon this college world with new eyes, we extend a hearty welcome, and to you others who visit a future beyond the pale of college ties, we bid good luck, God speed, and a continuation of friendship through the coming years.

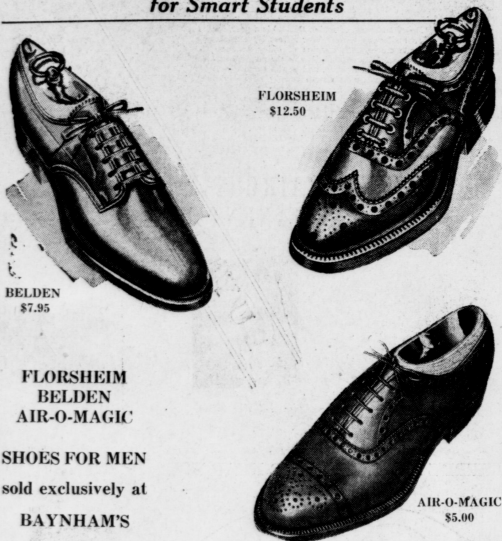
And in welcoming you we wish to say that we are for you from the opening whistle to the last touchdown—win or lose—and it is our desire that you make the LAFAYETTE a part of your college home.

THE LAFAYETTE HOTEL

MEN of U.K.

WELCOME
to Lexington and to
BAYNHAM'S

for over 25 years the Foot-quarters
for Smart Students



FLORSHEIM \$12.50

BELDEN \$7.95

FLORSHEIM BELDEN AIR-O-MAGIC

SHOES FOR MEN
sold exclusively at
BAYNHAM'S

AIR-O-MAGIC \$5.00

BE BETTER FITTED AT
BAYNHAM SHOE COMPANY
Incorporated

135 E. Main Street

Official Headquarters for Freshman Caps

JEAN REYNOLDS
will be in charge of arrangements for Alpha Xi Delta rush parties this week.

Alpha Xi Delta Gives Cabaret Party

Alpha Xi Delta rushesses will be honored today with a cabaret party. The house will be decorated with balloons, streamers and confetti. Tables and a mock bar will portray the setting. Individual corsages will be presented to each girl. Saturday, a collegiate party will be held with banners, pennants, and fall flowers creating a collegiate motif. Members who are Suky girls will present each girl with an Alpha Xi Delta paddle as favors.

A Hawaiian party will be held Monday afternoon, each rushess receiving a lei, and a book mark designed as replica of Alpha Xi Delta quilts. Hawaiian music will be played at intervals throughout the afternoon.

Virginia Hendricks, rush chairman, is in charge of the affairs.

Appointments

(Continued from Page One)

Robert Wilson Landrum, Dr. Ellis Hartford, director of the University school; Barbara Shipp and Ida Pieratt, secretaries in the department of elementary education; Margaret Bell Humphreys, critic teacher in business education, succeeding Leslie Betz, who is on military leave; Mrs. Forest Mercer, teacher in mathematics and biology in the University school, replacing LeRoy Kaffer, resigned; G. Robert Boyd and Mary J. Patterson, graduate assistants; Evadne Parker, critic teacher in home economics at Lafayette high; Mrs. Lillian Gaines Webb Brown, assistant secretary in the dean's office.

Prof. Jasper B. Shaugan, a member of the political science department, was granted a year's leave of absence for the 1942-43 school year to accept a visiting professorship at the University of Wisconsin. Other leaves approved included those of Prof. William H. Pittman, of the College of Law, who has a year's leave to serve as visiting professor in the University of Missouri law school; Mrs. Roberta Wilson Landrum, secretary in the department of vocational education; Wallace Briggs, instructor in the University school, ordered to military service; Peter Kurachek, physical education teacher in the University school, military service; Dr. Robert D. Haun, of the College of Commerce, granted leave to serve with the Kentucky branch of the Office of Price Administration, and Prof. R. D. McIntyre, of the College of Commerce, military service.

Resignations accepted included those of Dr. J. D. Williams, director of the University School, who has accepted the presidency of Marshall College at Huntington, W. Va.; Virginia Pinesur, secretary in the department of elementary education; LeRoy J. Kaffer, critic teacher in chemistry and mathematics in the University school; Mrs. Margaret Norris Byrn Ward, critic teacher in home economics; Miss Susan Clay, assistant secretary in the office of the dean of the College of Education; Emeline Eggenmeyer, instructor in English; C. H. Wyatt, graduate scholar in physical education; Sidney Sorenson, graduate scholar in physical education; Joe Rupert, assistant football coach, and Martha Taylor, part-time nurse.

Hugh O. Myers, assistant in department of agronomy; Reginald Prather, assistant county agent at Carrollton, who has been inducted into the Navy; Larue R. Underwood, home demonstration agent at Morganfield; Wilson M. Routt, assistant county agent at Princeton; Woodrow H. Hughes, assistant county agent, Russellville, to attend military training school; John W. Cowgill, assistant county agent at Henderson, who has been inducted into the Army; J. H. Blackstone, graduate assistant in department of farm economics, who has been called for military service; Dr. J. T. Spencer, who has entered the U. S. Naval Reserve; Graham Wilkins, assistant county agent, Benton, to enlist in the U. S. Signal Corps; Louise McGoldrick, home

(Continued on Page Eight)

HELLO, STUDENTS

READ THIS SIGN

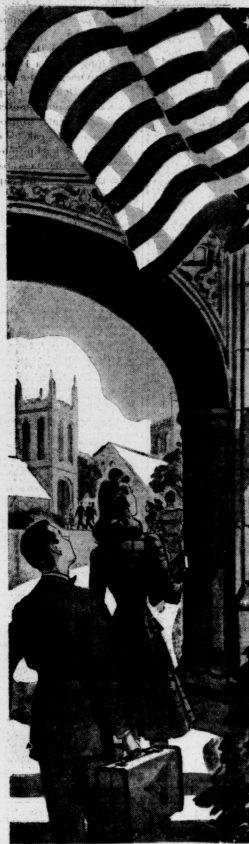


ALWAYS PHONE 62

ONLY OUR QUALITY CLEANING WILL CONSERVE YOUR CLOTHES. WHEN YOU CAN REPLACE THEM GOODNESS ONLY KNOWS!

Lexington Laundry Co.
LAUNDRETS • DRY CLEANERS • RUG CLEANERS

BUY WAR SAVINGS STAMPS



Book Store
Open Until
9 P. M.
Friday Night

- Gym Supplies
- Drawing Instruments \$11.50-\$13.50 up
- Eye Ease Lamps \$2.25
- Sheaffer Pens \$2.75-\$5.00
- Wasp Pens \$1.00
- Sporting Goods
- "T" Shirts 60c
- Socks 30c
- Locks 25c-85c
- Stationery 12c-25c-\$1.00
- Greeting Cards 5c-10c-25c
- Note Books 10c-35c-\$1.25
- Water Color, Oil, Paints, Charcoal, etc.
- Pennants 5c-25c-50c-\$1.00
- Jewelry with Seal
- Modern Library Giants

USED BOOKS BOUGHT AND SOLD

Campus Book Store

A single farm in Zavala County, Texas, produces more spinach than any state in the Union, except Texas. Fewer major crimes are com-

mitted in China than in other countries, asserts Frank R. Chinn Lee, graduate of the University of California, in his dissertation for his doctor of philosophy degree.

RENT A CAR!
—NEW—
Fords and Plymouths

Phone 648
FORD U-DRIVE-IT
139 E. Short Street

Freshman Games Cancelled As SEC Issues New Ruling

Six Frosh Elevated To Varsity Squad

For the first time since 1921 the Wilcat freshman football squad will play no scheduled games, according to an announcement by Ralph McRight, new frosh grid mentor. Eligibility of first year men for varsity competition due to a new Southeastern conference ruling and a shortage of yearling material were given as reasons for the decision.

Kentucky's absence from the frosh grid world will be the first in two decades. Games carded with Vanderbilt and Tennessee have been canceled. A tilt scheduled with Xavier had been called off previously when the Musketeers made freshmen eligible for the varsity.

In disclosing the announcement McRight added that the best prospects will be moved up to the Big Blue squad. Six Kittens have already joined the ranks of the varsity; two saw action in Saturday's game with Georgia in Louisville. Yarusis, guard from Gary, Ind., and Kohl, tackle from Cleveland, were the yearlings who faced the southerners. Other first year men who have been promoted to the big team include: Byrley, Cochrane, fullback; Sauer, guard hailing from Louisville; Cook, guard from Ft. Thomas, and Bradshaw, end from Montgomery, Ala. Coach McRight indicated that other freshmen will be moved up if they show sufficient improvement.

Parking Permits

Dean T. T. Jones announced today that parking permits would not be required on the campus this week. A decision as to the time of sale of the permits will be made next week.

STATEMENT OF OWNERSHIP

STATEMENT OF THE OWNERSHIP, MANAGEMENT, CIRCULATION ETC. REQUIRED BY THE ACT OF OCTOBER 3, 1917 (ACT OF AUGUST 24, 1912, AND MARCH 3, 1909).

Of The Kentucky Kernel, published twice a week at the University of Kentucky, Lexington, Ky., for 1942-43.

State of Kentucky, County of Fayette. BEGGS me, a Notary Public in and for the State and county aforesaid, personally appeared Patricia Snider, who having been duly sworn according to law, depose and say that she is the holder of the Kentucky Kernel, and that she is the best of her knowledge and belief a true statement of the ownership, management, and circulation of the said publication for the date shown in the above caption, required by the Act of October 3, 1917, as amended by the Act of March 3, 1909, and section 1102, Postal Law, and Regulations, to wit:

1. That the name and address of the publisher, editor, managing editor, and business manager are:

Publisher: The students of the University of Kentucky, Lexington, Ky.

Editor: Patricia Snider, University of Kentucky.

Managing editor: Robert Conway, University of Kentucky.

Business manager: Jay Wilson, University of Kentucky.

2. That the owner by the University of Kentucky, Lexington, Ky.

3. That the known bondholders, mortgagees, and other security holders owning or holding 1 per cent or more of the total amount of bonds, mortgages, or other securities are:

None.

4. That the two paragraphs next above giving the names of the owners, stockholders, and security holders, if any, contain not only the list of stockholders and security holders as they appear upon the books of the company but also in cases where the stockholders or security holders do not appear upon the books of the company or security holder appears upon the books of the company in a capacity other than that of a bona fide owner; and this affiant has no reason to believe that any other person, association, or corporation has any interest direct or indirect in the said stock, bonds, or other securities than as so stated by him.

5. That the average number of copies of each issue of this publication sold or distributed through the mails or otherwise to paid subscribers during the twelve months preceding the date shown above is: this information is required from daily publications only.

PATRICIA SNIDER, Signature of editor.

Sworn to and subscribed before me this 19th day of September, 1942.

BESS D. MAYES, My commission expires April 11, 1946.

KENTUCKY
NOW—Mat, 45c. Eve. & Sun. 60c
THE IDOL OF MILLIONS

GARY COOPER
The Pride of the Yankees
THE LIFE STORY OF LEO FRANKLIN
WITH TERESA WRIGHT, WALTER BRIDGMAN

BEEN-ALL!
STARTS SUNDAY
MIDNITE PREVUE SAT. 11:30

MICKEY ROONEY
becomes a one-man A. E. F., on **A YANK ATON**
A "Bogie" for Britain!

Steinfort Named Sports Editor

Roy Steinfort, Covington, senior journalism student, has been appointed sports editor of The Kernel to succeed Bob Adair, Journalism senior from Lexington. Adair resigned to accept a position on the sports staff of the Lexington Herald.

Steinfort is a former Kernel sports editor, columnist, and staff writer. He is director of athletic publicity for the University and president of Kappa Sigma, social fraternity.

The new sports editor was elected president of the Kentucky Intercollegiate Press Association last April to serve during the present year.

TRY KERNEL CLASSIFIED ADS

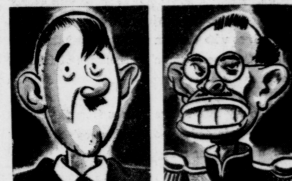
Ruthless Destruction Marks Nazi Occupation



Russians survey the once-beautiful, serene town of Vereya, in the Moscow region, after German invaders had been driven out by Red troops. Usual ruthless destruction marks the temporary Nazi occupation.

THEY ARE LOOSE!!

WANTED



...BUT NOT FOR LONG!!



Yes, they are loose now, but America is beginning to roll Tanks, guns, planes and ships are rolling off the assembly line in an ever increasing avalanche. Men and machines will defeat the Axis! You can help, too, by making daily purchases of Defense Stamps.

Your government has publicly commended the Dairy Industry, of which DIXIE is a part, for its contribution to our War Effort by absorbing the tremendous surplus of dairy products, materially contributing to the nation's nutritional welfare, and at the same time, assuring an ample supply of dairy products for the leaner Winter months ahead - dairy supplies for our Armed Forces, our Allies, our War Workers and our Children. You, too, can still enjoy Dixie. It is still the same delicious, healthful, fresh cream of the Bluegrass!

BUY DEFENSE STAMPS!!

THERE'S A DIXIE DEALER NEAR YOU!

ENJOY **Dixie** ICE CREAM
CREAM OF THE BLUE GRASS

Protect Your **AUTOMOBILE**
Your Car Is No **JEEP!**

YOUR CAR IS PRECIOUS NOW. LET US GIVE IT THE QUICK, EFFICIENT SERVICE IT DESERVES.

EXPERT REPAIR • LUBRICATION • PEPPER GAS • AMALIE OIL

TAYLOR TIRE COMPANY

Phone 2030 Vine at Southeastern 24 Hour Service

University uniform

You'll find your University uniform at Graves-Cox. We don't mean the army type, but rather the campus uniform that's setting the style this Fall. If it's covert, tweeds, or shetlands, we have them in the styles you like and priced the way you'd want them. As for shirts, ties, shoes, and other accessories, they are here too. New Fall colors in smart styles that are strictly for campus wear. Let our clothes be your uniform until Uncle Sam wants you in his!

GRAVES-COX
SAND COMMERCE BLDG.
Lexington, Ky.
1888

Like To Eat??

... then let us welcome you to the COLONIAL RESTAURANT where you may eat what you want, all you want, and LIKE IT! You will like our quality food at such inexpensive prices.

- Plate Lunch 35c
- Club Steak Dinner 55c
- Short Orders
- Breakfast

The Colonial Restaurant

545 S. Lime Across from Memorial Hall

Blues Seek First Victory In Musketeer Tilt Tonight

Prospects Point To Best Grid Team In Recent Years

By BAXTER MELTON
With the prospect of having their best season in years, Coach Ab Kirwan's Wildcats will try for their initial 1942 victory against Xavier's Musketeers tonight in Cincinnati. Reason for their optimism is the Jan. 7-6 decision they held Georgia to last Saturday in Louisville.

The Bulldogs, Orange Bowl champions and ranked near the top in the national grid ratings, were easy favorites to trample the boys from Rose St. Tech according to all the prognosticators. There was only one hitch, everyone knew just how bad the Wildcats were going to get

beat except the Wildcats themselves; they didn't even bother to read the sports pages, they preferred to write their own story.

For two quarters Kentucky more than held its own, then amazed everyone by pushing over a touchdown in the third period to take the lead over All-American Frankie Sinkwich and associates. Charlie Kuhn's try for the extra point was blocked. The advantage was erased in the last stanza when Sinkwich led a 63-yard march to the double-stripe territory. Then Leo Costa, a specialist in the placekicking business, sent Georgia into the lead

with a perfect boot.

Outstanding feature of the day—from a Wildcat view—was the strong forward wall of the Kentuckians. Previously an annual headache for the coaches, the line shouldn't cause any sleepless nights this year. On the offensive side it was Phil Cutchin and Kuhn for the Wildcats. Cutchin outshone the heralded Sinkwich by averaging 4.9 yards per try, while the Georgian had 3.5. In the kicking department Cutchin was far ahead with an average of 40 yards per boot on nine tries. Sinkwich's mark was 21 in five tries. Kuhn crossed the Peach State goal line standing up, while quarterback Tommy Ewing unceremoniously steamrolled Mr. Sinkwich.

Every member of the line did a magnificent job but Clyde "Big

Sloop" Johnson, burly 230-pound tackle from Ashland, stood out. Bill Griffin, Jay Rudecymre, Hut Jones and Charles Browning were outstanding on the line, while Bob Herbert, Jess Tunstall, Tommy Ewing, and Gene Meeks gave creditable performances in the backfield. Clark Wood, senior tackle, demonstrated his versatility by alternating at right and left tackle. Kentucky blocking was far better than usual.

Kentucky employed a bit of strategy to count its marker. Griffin nailed Sinkwich, attempting to pass, on the Georgia seven and fell on the plegkin when the Bulldog star dropped it. Kuhn drove to the three, and Bob Herbert went to the one. Then Georgia, expecting a thrust through the line, was caught off balance when Kuhn skirted the left end.

Georgia registered 16 first downs to Kentucky's five, gained 146 yards by rushing to the Wildcats' 106. Advances via the aerial route was all Bulldog, as the winners picked up 120 yards. Kentucky nine. Sinkwich completed nine of Georgia's 10 successful passes.

Safety Steps



Falls from stairs cause half of the nation's home accidents. If the runner has become loose at one of the steps, fix it at once. Also keep stairs clear of toys, check handrails for solidity, and keep stairways well-lighted.

INTRAMURALS JUST AS USUAL

There will be no curtailment in the intramural sports department, despite an expected drop in enrollment and the derangements due to the war. C. W. Hackensmith, acting head of the physical education department, announced recently.

"We intend to offer every facility this year which has been possible formerly," he said.

The appointment of A. T. Gullette, former director of athletics at Lindsey Wilson junior college, to the post of intramural sports supervisor, left vacant by the naming of Hackensmith to his present position, was also announced.

During the fall quarter tennis, touch football, volleyball, boxing, wrestling, golf, and bowling tournaments will be held, while winter sports will include ping pong, handball, free throw, bowling, basketball, badminton, and shuffleboard. In the spring golf, horseshoes, archery, track, softball, fencing, and tennis will hold the limelight.

"When the number of participants necessitate it, we will form A, B, C, and possibly D leagues in certain sports such as basketball and bowling," Hackensmith said.

Hackensmith outlined a new system of scoring in intramural events which will be inaugurated this year. The system, designed to discourage dropping out of tournaments, enables a team to be credited with a certain number of points for entering an event, then to add to these with each victory.

The participation trophy will be awarded to the organization having the highest number of participation points, and a runners-up trophy to the organization having the second highest number. Also, as formerly, a trophy will be awarded to the individual who has participated in at least half of the sports and who has earned the most points.

Hackensmith outlined the objectives of intramural sports as follows: (1) the betterment of health, (2) the provision of wholesome recreation, (3) the encouragement of better citizenship, and (4) the social development of the individual.

LOANS

ON

- DIAMONDS
- WATCHES
- JEWELRY
- VALUABLES

RITZ

JEWELRY — LUGGAGE
110 N. LIME NEAR MAIN

Welcome Back, Students!

FROZEN FOOD BANK

110 E. MAXWELL

PHONE 17-0

FLOWERS?

Jordan Florist

645 E. MAIN

PHONE 2177



Are you the Daguerreotype or the Arrow Type?

DEEP breathably and picture yourself in one of Arrow's new pride-swelling white shirts. They're tops in authentic styling and sport a collar that made history. Sanforized-labeled (fabric shrinkage less than 1%). Cost less than you'd expect.



\$2.25 up

• BUY U. S. WAR BONDS AND STAMPS •

ARROW SHIRTS

TIES • COLLARS • HANKERCHIEFS • UNDERWEAR • SPORT SHIRTS

MEYERS

This Year, More Than Ever—the Opening of the University calls for better, more durable SCHOOL APPAREL

Note! Myers—the Home of Fashion Park, Don Richard and Monroe Clothes—offers Fashion's finest selection of Suits, Overcoats and Topcoats tailored and designed especially for College Men.

Wind Breaker

Every college man's wardrobe calls for one of these windproof, waterproof jackets. To shelter you and your new feeling of brisk alertness... the smart, functional jacket that's ready to go whenever you are! Scientifically designed for comfort and freedom in action.

500 Up



Sport Jackets

Leather Coats and Jackets in suede — elk, cowhide—corduroy—two-tone, leather and wool—and all wool. Tailored to the n-th degree. For school wear or active sportswear.

795 Up



Hosiery

New imported wool hosiery from Scotland and England. Patterned and plain. The college man's favorite. Other smart fall hosiery.

39c Up



"Regulation Military Outfitters"

MEYERS

340 W. MAIN

Jarman "Moc-Sons"

the "walking order" of the day!

Styled with spirit and built to take it! Just slip on a pair of these Rugged "Moc-Sons" and let the shoe horn be the judge... Your foot will be ushered into a new experience... Jarman's "friendliness of fit."

Jarman SHOES FOR MEN \$5.95 to \$8.95 MOST STYLES



HAND-RUBBED TO THE FINISH OF YOUR CHOICE

LET THE SHOE HORN BE THE JUDGE!

BUY U. S. WAR BONDS AND STAMPS

PHILLIPS

107 E. MAIN

☆ Don't Forget, Buy Defense Stamps Today! ☆



WAACY?

... Not by a long shot—not about her cleaning and laundering!! She knows that BECKER'S is the place for the finest work available for the most reasonable prices. Call us or come in and give us a try.

Shirts Laundered 10c

DRIVE IN AND SAVE 15%

SOUTH LIME and EUCLID

BRANCH STORES

212 S. Lime
4th and B'way

201 Woodland
Rose and Lime

BECKER

Launderers and Cleaners

Lime at Euclid

Phone 621-624

CAGE OUTLOOK NOT TOO BRIGHT

Eight Men Lost From Title Team

By BAXTER MELTON

If eight players from a basketball team's traveling squad of 11 were lost through some reason or another, what chances would you give that quarter during the ensuing season? That's the situation confronting Adolph Rupp, head coach of the Wildcat basketball team.

The defending Southeastern Conference champions will have to depend on freshmen, according to the Baron, who says "Whatever our chances are remain to be seen." Four performers departed via the graduation route, two were lost by military graduation and the other two left for military service.

Carl Staker, captain, Jim King, Ernal Allen, and Waller White were graduated in June. Kenny England and Lloyd Ramsey were only juniors, but completed their military training in the spring. Adrian Back accepted an appointment to the Naval Academy last week and Vincent Splane has enlisted in the air corps.

The affable Mr. Rupp, familiarly known as the Man in the Brown Suit, is none too optimistic over his proteges' chances in the campaign for a defense of the title won last February in Louisville.



DEARLY BELOVED

Benny Goodman

EVERY NIGHT ABOUT THIS TIME

Kay Kyser

MANHATTAN SERENADE

Tommy Dorsey

HE'S MY GUY

Ella Fitzgerald

CROSS ROADS

Jimmy Dorsey

Hair-don't



On the dance floor, loose, fluffy hair may be attractive, but it's just a hazard near machinery. If you work in a factory, keep a hair out of harm's way with a cap or hair-net.

"Look at that suicide schedule of ours," reasons the hardwood maestro, who is entering his 13th year as net coach. First game on the 'Cat docket lists Miami University here December 5. Among the more prominent quintets on the schedule are Indiana, Notre Dame, Ohio State, Tennessee, Alabama, the Great Lakes team, and old Knox. Xavier, which annually produces a strong five, and Vanderbilt are also listed on the card, which calls for 21 contests in addition to the conference tournament, which is to be held in Louisville's Jefferson County armory again this year.

The three returning lettermen around whom Coach Rupp will build his squad are Mel Brewer, center, Marvin Akers, guard, and Mill Tocco, forward. The rest of the squad will be chosen from a list of outstanding freshmen who are to report to Rupp.

Among these are Noel Midway; Moseley Lafayette; Coleman, Corbin; Schu, Versailles; French, Corbin; Morgan, Harlan; Glazer, Knoxville, Tenn.; and Buschie, Roger Bacon high, Cincinnati. Rupp has not yet selected a date for the opening of cage practice, but plans to meet all freshmen aspirants Monday afternoon at 3:30 o'clock in the gym. Any freshmen who are interested in trying out for the team are asked to be present.

Tennessee, pre-tourney favorite to make the Southeastern crown last season, is reported to be much stronger this year, and Georgia is also expected to have a much better team. Much of Kentucky's hardwood success will depend on the play of several freshmen. Moseley was a member of the state champion Lafayette squad; Noel played on the Midway outfit that lost by one point to Lafayette in the regional eliminations; Coleman attracted attention by his play in the All-Kentucky Conference tourney here in early February; Schu was the offensive star of the Versailles five that finished near the top in standings; and Morgan played a major role in pacing Harlan to the final game of the state tourney before losing to Lafayette's Generals.

Oakes Appointed YWCA Secretary

Miss Rosalie Oakes, Winchester, Virginia, has been chosen as the secretary of the University YWCA for the present year. She succeeds the former Miss Anne Morrow who was married this summer.

Miss Oakes is a graduate of the University of Richmond, Richmond, Virginia, in the class of 1939. She was graduated last June from Crozer's Theological Seminary, Chester, Pennsylvania. In college she was active in the cabinet of the YW and served as president of that organization during her senior year.

The new secretary stated that she was particularly interested in working with the freshmen group this year. She also expressed the desire that there will be closer coordination between the YW and the YM than in previous years.

The University of Wisconsin military science department is training 1,881 cadets for duty with the army

Seventy-two per cent of the students in the University of California college of dentistry work while they are in school.

A clever, ugly man every now and then is successful with the ladies; but a handsome fool is irresistible.

Pitch horseshoes? A set of eight shoes and two stakes uses as much steel as an Army rifle.

The federal government is spending \$5,800,000 on college ROTC units for the year ending June 30, 1942—(ACP).

CLEM

STATE BARBER SHOP
Across From Memorial Hall

Haircuts . . . 40c
Shaves . . . 25c



College Success In Clothes For Classroom Wear

Autumn Smartness

Every line — every stitch represents new design and styling. All first quality woolsens in patterns and shades that will put you in the front ranks of suit fashion for fall and winter.



Fall Topcoats

The new wartime models, that combine thrift and fashion for the college man. Single breast-ed slash pockets, triple stitch edge, outstanding style values for campus wear.

Just "Hanging Around"!

... But that is just one of the many recreational features your Student Union Building has to offer students with a few "spare" hours in which to relax from University work. It also provides . . .

- Ball Room
- Conference Rooms
- Game Room
- Barber Shop
- Cafeteria
- Card Room
- Music Room
- Beauty Salon

* In the Student Union Building you find a place to study in a pleasant, quiet atmosphere . . . reception rooms to meet your friends . . . check room for your convenience . . . Information Desk to help you . . . and mail and telegraph service for your correspondence.

Student Union Building

The Corner of The Campus—Yet The Center of Activity



Appointments

(Continued From Page Five.)
demonstration agent, Nicholasville; Paul Estes, assistant county agent, Madisonville, and Prof. Merton Oyer, assistant in rural life studies, department of farm economics. Mr. Oyer has accepted a position on the regional staff of the Regional Land Tenure project at Fayetteville, Ark.



WHITE TAVERNS

Delicious
5c HAMBURGERS 6c
"Take Home A Sack-full"
300 E. MAIN
518 W. MAIN 113 N. LIME

KAUFMAN'S