

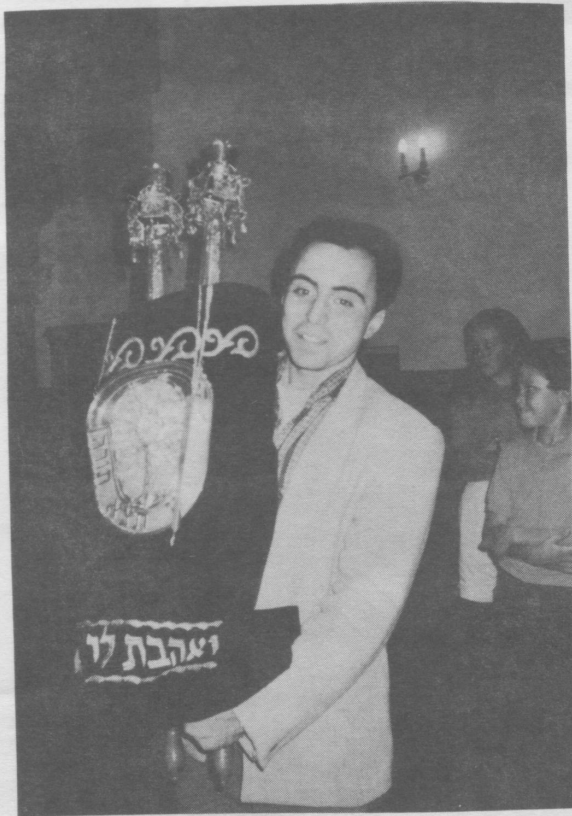


# CENTRAL KENTUCKY JEWISH FEDERATION

VOL. X

NO. 6

Rabbi Adland recently led a well attended workshop on the High Holy Days for our new Americans.



Michael Rubin, Anastasia Kaidanov and Zoya Orlov hold the Torah for the first time.





**Jon Goldes learns how to blow the Shofar.**



**Rabbi Adland discussing the Torah with the group.**



**A MESSAGE FROM JUDY SAXE, CKJF  
PRESIDENT...**

Dear Friends,

As the High Holiday season approaches, we refer to this time of year as one of introspection, a time to examine our spiritual selves. At the same time we have learned that we must take responsibility for our human relationships. We must work to make them better, acknowledging to ourselves and those affected when something goes awry.

This year our preparation for Rosh Hashanah and Yom Kippur must include reflection on the natural and man made catastrophes that confront us: Hurricane Andrew and Inike, a typhoon in Guam, ethnic hostilities in Eastern Europe, ongoing killing in South Africa, famine complicated by Civil War in Somalia.



And yes, there is something we can do about it.

We can contribute to disaster relief here in the United States. (see article on page 6). Equally important, is the importance of supporting our own CKJF Campaign. Funds we collect are used not only to resettle new immigrants in Israel, but also are utilized by the Joint Distribution Committee and other agencies to assist the victims of the tragic hostilities in Yugoslavia.

Not surprisingly, we find human needs existing right here in Lexington; older adults without the network of family support we once took for granted; families in crisis, financially or emotionally; and more.

(Continued on page 4)

*L Shana Tova* 

**ORR FUNDING APPROVED BY  
HOUSE OF REPRESENTATIVES**

In a major victory for our Federations and affiliated agencies committed to the resettlement of refugees in this country, the House of Representatives voted to provide \$321.75 million for FY 1993 for the domestic refugee resettlement program under the Office of Refugee Resettlement (ORR) at the Department of Health and Human Services, as part of the \$300 billion Labor, Health and Human Services and Education Appropriations bill, despite threats by a few to defund the program. This approval came shortly after Rep. William D. Natcher (D-KY) included funding for the refugee program during his appropriations subcommittee markup of the bill.

Although this recommendation is less than the Congressional Budget Resolution figure of \$424 million, the House-passed figure is nearly \$100 million more than the President's request and more than the level first projected by Rep. Natcher's subcommittee.

The Senate will not consider this measure until after Labor Day, leaving only three weeks for final action on the bill, including funding, to be completed by the end of the fiscal year or 30 September. The goal is for the Senate to restore funding to the essential \$424 million.

The CJF Washington Action Office has worked in coalition with public and nonprofit private agencies for the past seven months to secure at a minimum \$424 million for FY 1993 for the domestic refugee resettlement program, in spite of the Administration's request to cut the

program to \$227 million. Federations have been quick to respond to our pleas for help on behalf of refugees.

**URGENT ACTION NEEDED**

Therefore, it is essential that you contact both of your Senators and urge them to support full funding of \$424 million for the Office of Refugee Resettlement for FY 1993.

---

(continued from page 3)

We also strive to meet cultural needs that help strengthen our sense of Jewish Community.

This season we here in Lexington have much to appreciate, much to be thankful for. But this is also a season to think about taking an active role in helping improve the condition of our fellow Jews, of all who suffer.

May you all have a happy and healthy year, and may we see progress toward a world of peace.

Judy Saxe





### FEDERATION LOAN GUARANTEE PROGRAM

We are pleased to report that 95,242 loans have been authorized in the amount of \$73,768,636 for New Israelis from the former Soviet Union. This represents money guaranteed by North American Federations under the CJF Loan Guarantee Program. The average loan given to an individual is \$782 with the maximum amount being \$1250.

---

### ISRAEL BONDS IS BACK IN LEXINGTON

After several years of inactivity, State of Israel Bonds is making a determined effort to renew its relationship with the Jewish community of Lexington. Joseph Englander, who recently joined the Israel Bonds staff in Cincinnati, will be in Lexington on a regular basis and is looking forward to forming a steering committee that will help organize a Lexington Israel Bonds Campaign.

State of Israel Bonds is an international securities organization offering interest-bearing investments. Since its inception in 1951, Bonds have mobilized more than \$12 billion in investment capital for the development of every aspect of Israel's economy, including agriculture, commerce and industry. Now, with hundreds of thousands of Jews arriving from the former Soviet Union, bond proceeds are being utilized to provide jobs and homes for these, Ethiopian and other immigrants.

With yields as high as 7.5%, Israel Bonds are an attractive investment in today's marketplace. For more information about purchasing or getting involved with Israel Bonds, please call Joseph collect at (513) 421-4144.

---

**Often we are asked where does the money go? The Joint Distribution Committee sent us this news article describing one recipient of our aid.**

### WHERE DOES THE MONEY GO?

**Romania...The Princess.** Ilona Glocer, a blind 78 year old widow in Bucharest, lives in what would be called a hovel by Western standards-- a two room basement apartment with a doorway four feet high and no indoor toilet. Her only child died at a young age.

FEDROM (the Federation of Jewish Communities of Romania), funded by Joint Distribution Committee, wanted to move her into an old age home. Although she knew the living conditions would be far better than in her apartment, she didn't want to leave.

She explained that she sometimes kisses the walls of her home because they hold so many memories of her life with her husband and child.

JDC through FEDROM has enabled her to remain in the apartment by providing her with Meals on Wheels, homecare, and medical and cash assistance.

By Western standards the woman has almost nothing, yet she says she has everything she could possibly need--friends who visit, her radio and the homecare service. "I feel like a princess," she informed her JDC visitors.

## HURRICANE ANDREW

Our office has received numerous inquiries regarding Hurricane Andrew. At this point 55,000 Jewish individuals were affected by the hurricane and the relief needs are enormous.

Jewish communities in South Florida have coordinated a broad response to the crisis. Federations and CRC's throughout Southern Florida have set up drop-off sites for donations of relief supplies (food, water, medical supplies, building materials, etc.). These supplies are being delivered directly to communities in need and also to the Greater Miami Jewish Federation, which is providing a variety of goods and services to the Jewish and general populations affected by the hurricane. The Miami Federation is working together with the Federal Emergency Management Agency (FEMA) in providing needed services to the area. (This working relationship is consistent with the 1985 agreement between FEMA and the federations to work together in disaster relief efforts).

The Miami Federation, now open seven days a week, is integrating efforts with the United Way and the Red Cross to serve the Jewish and general populations affected by the hurricane. We have been advised by the Miami Federation and by CJF that individual and organizational cash contributions may be sent to:

**Greater Miami Jewish Federation Hurricane Relief Fund**

**4200 Biscayne Blvd.**

**Miami, FL 33137**

**telephone: (305) 576-7401 or (305) 576-4000**

**or**

**Miami JFS Hurricane Disaster Fund**

**Jewish Family Service**

**1790 SW 27th Avenue**

**Miami, FL 33145**

---

**The October 8th  
date scheduled with  
DR. ELLEN CANNON  
has been  
CANCELLED!**



# High Holiday Services

## 1992-5753

### TEMPLE ADATH ISRAEL

#### EREV ROSH HASHANAH SERVICES

**Sunday, September 27**

7:00 pm Early Service  
9:00 pm Late Service

#### ROSH HASHANAH SERVICES

**Monday, September 28**

8:45 am Family Service  
10:30 am Late Service

#### MEMORIAL SERVICE

**Sunday, October 4**

1:00 pm Lexington Cemetery

#### KOL NIDRE SERVICES

**Tuesday, October 6**

6:45 pm Early Service  
9:15 pm Late Service

#### YOM KIPPUR SERVICES

**Wednesday, October 7**

8:45 am Family Service  
10:30 am Late Morning Service  
3:00 pm Afternoon Service

\*Yizkor at approximately 4:30 pm  
followed by Nelloh Concluding  
Service

Break-The-Fast following services

\*There **will be no break** between the  
afternoon and Yizkor services.

### OHAVAY ZION SYNAGOGUE

#### ROSH HASHANA

**Sunday, September 27**

7:30 Mincha/Maariv

**Monday, September 28**

9:00 am Shacharit  
10:00 am Youth 6-10 years  
11:00 am Children 3-5 years  
1:00 pm Tashlich  
7:30 pm Mincha  
7:45 pm Maariv II

**Tuesday, September 29**

9:00 am Shacharit II  
10:00 am Youth II 6-10 years  
11:00 am Children II 3-5 years  
7:30 pm Mincha II

#### FAST OF GEDALIAH

**Wednesday, September 30**

#### EREV SHABBAT SHUVAH

**Saturday, October 3**

9:30 am Shacharit  
7:45 pm Erev Shabbat Shuvah

#### MEMORIAL SERVICE

**Sunday, October 4**

1:00 pm Lexington Cemetery

#### YOM KIPPUR

**Tuesday, October 6**

6:45 pm Kol Nidre  
(Be at OZS by 6:30, doors  
close at 6:45)

**Wednesday, October 7**

9:00 am Shacharit  
10:00 am Youth 6-10 years  
11:00 am Children 3-5 years  
12:15 pm Yizkor  
3:30 pm Study  
4:30 pm Mincha  
6:45 pm Nelloh  
7:45 pm Maariv, Havdallah &  
Break Fast

#### SUKKOT

**Sunday, October 11**

7:30 pm Erev Sukkot

**Monday, October 12**

9:30 am Shacharit  
7:30 pm Mincha  
7:45 pm Maariv II

**Tuesday, October 13**

9:30 am Shacharit II  
7:30 pm Mincha

**Sunday, October 18**

7:30 pm Erev Shmini Atzeret

**Monday, October 19**

9:30 am Shacharit  
11:30 am Yizkor  
6:30 pm Mincha  
7:00 pm Erev Simchat Torah  
Singing & Dancing

**Tuesday, October 20**

9:30 am More Singing & Dancing  
7:30 pm Mincha II

# LEXINGTON HAVURAH

## ROSH HASHANAH SERVICES

Unitarian Universalist Church  
3564 Clays Mill Road

Monday, 28 September at 10:00 a.m. Tuesday, 29 September at 10:00 a.m.

## YOM KIPPUR SERVICES

Lansdowne Club  
3200 Lansdowne Drive  
Kol Nidre at 6:30 p.m.  
Yom Kippur at 10:00 a.m.

Break the Fast will follow the maariv services.

For additional information call 272-8972 or 268-2596.



## WHAT IS THE GENERAL ASSEMBLY?

Jewish individuals from all over the country will meet to discuss critical Jewish issues. The General Assembly is open to all Jewish individuals. This year's General Assembly will be held in New York City on November 10 - 15, 1992.

This year's agenda for the General Assembly is to clearly place before the Federation movement the task of building renewed Jewish Communities and New Jewish Meaning.

1. We must adapt to dramatic changes in our environment and our Jewish people.
2. We must reinvigorate our connection to the people of Israel to be a source not just of mutual support but of mutual Jewish meaning.
3. We must redefine our understanding of "community" and of the Federation's role in building community to develop new partnerships to provide support and leadership to the wide range of Jewish institutions which must play a creative role in sustaining a vital Jewish future.
4. We must develop the financial resources to meet these challenges and use these challenges to develop new and creative ways to expand our resources.
5. We must find new ways to enhance Jewish meaning for individuals and to meet our collective obligations to the continuity of Jewish history, in a context of freedom.

**This will be the focus of the 1992 General Assembly.**

There will be a few members from the Lexington Jewish Community. Please join us if you can.



---

**SHALOM!**

One of the surprises of volunteerism is that, on occasion, organizations take you at your word when you say "If there is anything I can do to help...". Consequently, I find myself in the role of Interim, Temporary, Acting Executive Director of our Federation. It is a challenging experience.

For many years I've sat on the "other side of the desk". Now I'm in the position of implementing policy, and am coming to appreciate how difficult a job it is. So my first words are of admiration for my predecessors for their diligence and labor.

Now I am supposed to tell you who I am. That is a dangerous offer to make to a verbose philosopher. But I'll be brief. I came to Lexington in 1968 as a faculty member at the U.K. College of Nursing. I was immediately befriended by the Jewish community and my response was to become involved in many facets of our activities and organizations. In June I retired from U.K.; but there is no way I'd disengage from the Lexington Jewish community. My participation has been rewarding and enriching. I am grateful for all I have gained from my past involvement and hope that all I have learned will serve you in good stead until a new "exec" is employed.

L'shanah Tovah U'metachah

Evelyn Dantzig Geller

# Register, Read & Vote!



**MEET OUR NEW CKJF**

**OFFICE MANAGER,**

**KIMBERLY NYE**

Hello! I am the new CKJF Office Manager, Kimberly Nye. It has been quite an adventure for me up to this point. I am in the long process of organizing boxes and boxes of files and updating information on the computer. With great help from Jana DeBenedetti and Betty Hickey, I believe I may get things in order before too long.

My husband and I recently moved to Lexington from Costa Mesa, California. We were both attending school there. I have my B.A. in English and plan to pursue my Ph.D., in English Literature. Although we miss the California climate, we are looking forward to making Lexington our home and believe it has many things to offer its residents.

I want to thank all of the Board Members and staff for their encouragement and cooperation during my first month here, your comments have been comforting. If there is anything I can do to help you, or if you have any suggestions please call the CKJF office at 268-0672 or 268-0775. My hours are 8:30 am - 4:30 pm Monday through Friday.

-Kimberly

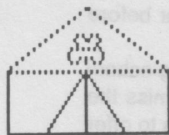
## NEWS FROM CAMP SHALOM

June 7th - June 25th 1993

The 1992-1993 season for Camp Shalom will offer some changes. Camp Shalom will have a new location for its upcoming season. The first two weeks of camp will be held at Woodman of the World Campground. The camp is located on Tates Creek Road approximately eight miles south from New Circle Road, just past Spears, Kentucky. The camp facilities include; a lodge with flush toilets, a dining hall, small stage; a pavilion with tables, water fountains, barbecue pit; swimming pool; campfire site; small lake, volleyball pit and basketball court. The third week of camp will be held at the Temple.

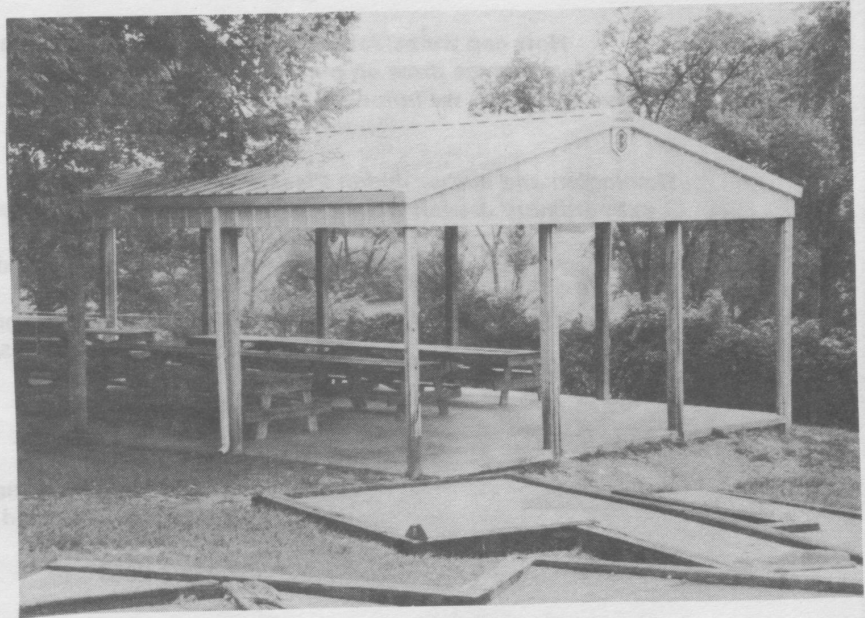
We think this is a necessary change for camp. By using this location format, the camp will have shelter, access to telephones and running water. The following are some pictures of Woodman of the World Camp.

### THE LODGE

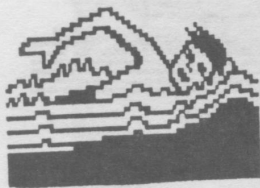




## THE PAVILION



## SWIMMING POOL



Camp Shalom hours will be extended this year. Times will be from 8:30 a.m. to 4:30 p.m. We will have bus service this year with central pick-up and drop-off site. Ages will be 4-9 years and camp will be all day long for all age groups. If anyone has any questions please call the Federation or Jessica Ross at 273-4231.

**JEWISH WOMEN'S SPIRITUALITY CONFERENCE**

AT GRAILVILLE, LOVELAND, OHIO

OCTOBER 23-25, 1992

*How can we as Jewish women participate fully in Judaism?  
How can we draw on our tradition for strength and sustenance?  
In what ways can we influence the life of Judaism to help make it a source of  
nourishment for all Jews?*

*Theologian and author Judith Plaskow will guide us as we draw on the lives of  
extraordinary Jewish women for insights into our past, present and future.*



JOIN US for a distinctive weekend of  
learning and thinking  
exploration and reflection  
conversation and companionship

For more information contact:

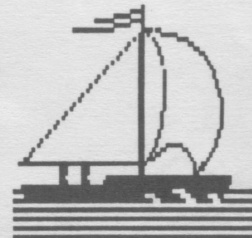
Myrna Silverstein  
Jewish Women's Spirituality Conference  
932 O'Bannonville Road  
Loveland, OH 45140  
(513) 683-2340

*Vegetarian Meals readily available. Kosher meals can be arranged.  
More information is available at the Ohav Zion Synagogue.*



World Zionist Organization  
Maj. Gen. (Res.) Uzi Narkiss, Chairman  
Zionist Delegation of North America  
invites you to join him on

**A Gala Jewish Singles Cruise**  
December 19-26, 1992



Miami - Grand Cayman - Ocho Rios Blue Lagoon - Miami  
aboard the M/S Caribe

**Elegant Accommodations Lavish Meals Midnight Buffets**  
**Superb Entertainment Masquerade Ball Party, Party, Party!**

Rates from \$825, inside cabin, per person, double occupancy (cruise only)  
Luxury Suites at \$1,745 p.p.d.o. (cruise only)

**Get together for what promises to be the  
hottest single event of the year!**

Call Today: 305-755-6180  
or your Travel Agent

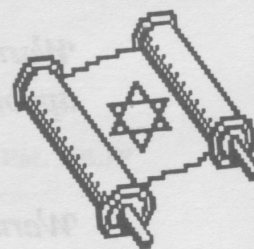


**BAT MITZVAH**

*Our daughter Sara Ann  
will be called to the Torah  
as a Bat Mitzvah  
Saturday, the tenth of October  
Nineteen hundred and ninety-*

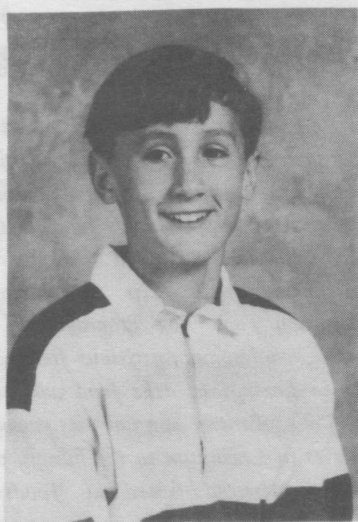


*two  
at ten-thirty in the morning  
Temple Adath Israel  
124 North Ashland Avenue  
Lexington, Kentucky*



*We hope you will join us  
for the service  
followed by a kiddush luncheon*

*Marylynn and Andy Gladstein*



**BAR MITZVAH**

*Bruce and Elizabeth Broudy  
invite you to join in  
the celebration of  
the Bar Mitzvah of  
their son,*

*Joseph Benjamin Broudy  
on Saturday, October 24, 1992  
at 10:00 a.m.*

*Ohavay Zion Synagogue,  
2048 Edgewater Court.*

*Joe will also lead the Sabbath  
evening services at the Synagogue  
at 8:00 p.m. on October 23, 1992.*

# Mazelto: to:

*Warm wishes and Mazeltov to Marilyn Moosnick on her appointment as the Kentucky Arts Council, Chair.*

*Warm wishes and Mazeltov to Irving Rosenstein and Dr. Richard Freed who were both appointed to serve on the Board of Regents at Eastern Kentucky University by Governor Brereton Jones.*

## LEXTY..LEXTY..LEXTY..LEXTY

**ATTENTION!** All 9-12 grade students. You are invited to join the Temple Adath Israel's **YOUTH GROUP, LEXTY.**

Dues are \$15.00 per year.

For further information phone:

Haggai Elitzur, Youth Group President  
269-3711

Betsey Wides, Youth Group Advisor  
276-2313

Rabbi Adland - 269-2979

**"YOU FILL THE NEED...**

**WE FILL THE PLATE"**

**G-D'S PANTRY FALL FOOD DRIVE**

*With your help, G-d's Pantry is alleviating hunger in our community. We will be conducting a food drive to raise nonperishable food for G-d's Pantry from September 21 until December 17. Your contribution will help to ensure that the Emergency Food Box Program will continue to provide wholesome, nutritious food to the hungry poor in Lexington. The food will be distributed by G-d's Pantry through its network of six pantries in Lexington to the hungry poor who are in temporary need of food aid. Foods most needed are infant formula; dry milk; canned meats or tuna, tomato products, and soups; canned fruit; peanut butter; and macaroni & cheese dinners.*

**THERE WILL BE A BOX AT THE  
CKJF OFFICE.**



## CKJF CALENDAR

### SEPTEMBER

- 27 Erev Rosh Hashana
- 28 1st Day Rosh Hashona
- 29 2nd Day Rosh Hashona
- 30 Community Relations Committee Meeting 7:30 PM, CKJF office

### OCTOBER

- 6 Erev Yom Kippur
- 7 Yom Kippur
- 8 Campaign Committee Meeting 7:30 PM, Gloria Katz's home
- 10 Sara Gladstein Bar Mitzvah Temple Adath Israel
- 11 Temple Adath Israel Sukkoth Open House - Adland Home
- 11 Erev Yom Tov
- 12 1st Day Sukkoth
- 13 2nd Day Sukkoth
- 14 Management Committee Meeting 8:00 PM - Nancy Hoffman's
- 18 Hoshana Rabah
- 19 Shmini Atzeret
- 20 Simchat Torah
- 21 CKJF Board Meeting 7:30 PM
- 23-25 Women's Spirituality Conference, Cincinatti
- 24 Joe Broudy Bar Mitzvah Ohavi Zion Synagogue
- 31 Andrea Silberman Bat Mitzvah Temple Adath Israel



**On behalf of the  
Central Kentucky  
Jewish Federation  
we sincerely wish  
you a very happy,  
healthy, and  
peaceful New Year!**

**The Staff of CKJF**

**Sharyn Sharer- Program Director  
Kimberly Nye- Staff Assistant  
Together, during the coming year,  
we will be working to meet the  
needs of Lexington's Jewish  
community. L'Shonah Tova !**





## VOLUNTEER OPPORTUNITIES

Once again the Lexington Jewish Community will host a new wave of Russian Immigrants. Please consider making yourself available to assist in this project of Resettlement.

### SOVIET RESETTLEMENT VOLUNTEER INFORMATION

Name \_\_\_\_\_ Home Phone \_\_\_\_\_  
Address \_\_\_\_\_ Work Phone \_\_\_\_\_  
\_\_\_\_\_  
\_\_\_\_\_

Please check those positions for which you would consider serving as a volunteer.

#### PRE-ARRIVAL

- \_\_\_\_\_ Locate apartment
- \_\_\_\_\_ Prepare apartment (i.e. cleaning, available when the furniture arrives)
- \_\_\_\_\_ Purchase food for apartment and stock
- \_\_\_\_\_ Purchase household supplies and stock

#### ARRIVAL

- \_\_\_\_\_ Meet family at Airport
- \_\_\_\_\_ Provide first meal (either prepare and have at apartment/invite within day of arrival)
- \_\_\_\_\_ Determine emergency clothing needs (arrange to get clothing from warehouse)

#### POST ARRIVAL

- \_\_\_\_\_ Orient to apartment life (day after arrival)
- \_\_\_\_\_ Orient to Lexington support services (within week of arrival)
- \_\_\_\_\_ Assess medical needs (i.e. arrange appointments and transportation)
- \_\_\_\_\_ Register for government services (i.e. Social Security, Refugee Services)
- \_\_\_\_\_ Assess educational needs (i.e. tour schools, English classes)
- \_\_\_\_\_ Serve as host family (i.e. invite for home hospitality)

### GENERAL VOLUNTEER OPPORTUNITIES

These are opportunities which are available and flexible. You could be called upon as needed.

- |  |   |
|--|---|
| _____ Available to teach driving                     | _____ Sort donated clothing                       |
| _____ English tutor (i.e. visit 1-2 hours a week)    | _____ Transportation (i.e. take to grocery)       |
| _____ Host for Jewish community programs             | _____ Typing (i.e. letters, resumes)              |
| _____ Make phone calls                               | _____ Special skills (i.e. teach to dance, music) |
| _____ Prepare for job interview                      | _____   |
| _____ Provide home hospitality (i.e. Shabbat dinner) | _____   |
| _____ Other _____                                    | _____   |

DAYS AVAILABLE: Mon \_\_\_ Tue \_\_\_ Wed \_\_\_ Thur \_\_\_ Fri \_\_\_ Sat \_\_\_ Sun \_\_\_

HOURS AVAILABLE: (List Times)

Mornings \_\_\_\_\_ Afternoon \_\_\_\_\_ Evenings \_\_\_\_\_

LANGUAGES YOU SPEAK: \_\_\_\_\_

SPECIAL INTERESTS: \_\_\_\_\_

Please complete the form and return to Central Kentucky Jewish Federation, 340 Romany Road, Lexington, KY. 40502-2400, or call Sharyn Sharer for more information, 268-0672 or 268-0775.



**Care enough to give the best -  
Volunteer!**

**"To be part of a community is the  
most urgent, historic obligation  
facing a Jew"  
- Elie Wiesel**

**Call the CKJF office for details ...268-0672 or 268-0775.**

**CK JF**



**CENTRAL KENTUCKY JEWISH FEDERATION**

340 Romany Road  
Lexington, Kentucky 40502-2400

Non-Profit Org  
U.S. POSTAGE  
**PAID**  
Permit No. 719  
Lexington, Ky.