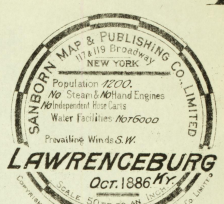
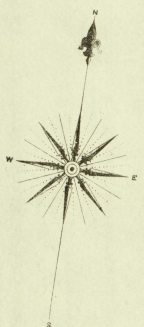


INDEX OF SPECIALS.

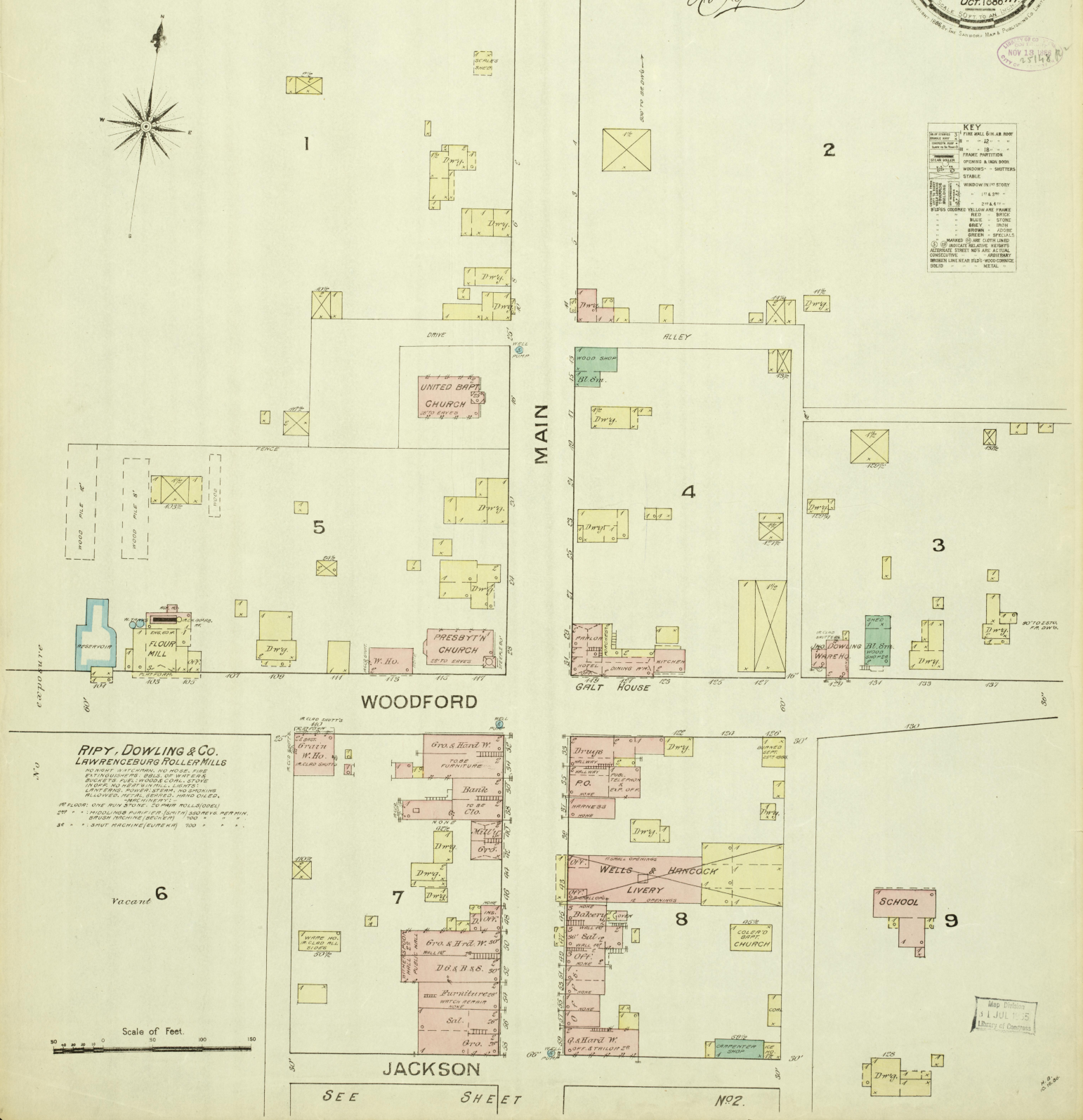
A	B	C	D	E	F	G	H	I	J	K	L	M	N	O	P	Q	R	S	T	U	V	W	X	Y	Z
Anderson County Distillery, No. 134, 7	Galt House, 3	Ripe, Dowling & Co. Roller Mills, 1	Belle of Anderson Distillery, 6	Hackley, S. O., Distillery, 7	Hawkins Bros., 8	Searcy & Co., Distillery, 7	Boiling Spring Distillery, 7	Lawrenceburg Roller Mills, 1	Stevens, J. W., & Co., Distillery, No. 416, 7	Stevens, J. W., & Co., Distillery, No. 367, 8	United Baptist Church, 1	Bond & Hughes, Carriage Shop, 2	Lillard, Distillery, 3	McBrayer, J. H., Distillery, 7	Walker, J. M., Distillery, 6	Waterfall & Dowling, Distillery, 5	Methodist Episc. Church, 4	Murphy & Dowling, Distillery, 2	Neetaraen Distillery, 6	Walls & Hancock, Livery, 1	Witterspoon, J. F., Wholes. Liquors, 6	Day & Haft, Distillery, 7	Dowling, J., Cooper Shops, 2	Warehouse, 1	Presbyterian Church, 1



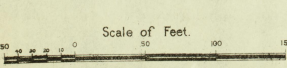
Lawrenceburg Ky.
 We the undersigned have examined the
 new map of Lawrenceburg, made by
 the Sanborn Map & Pub. Co., Limited of
 New York and find it to be complete &
 accurate. We recommend the map to
 all the G.O.'s we respectively
 represent.
Geo. J. H. ...
W. H. ...

KEY

Blue	Water	Black	Fire
Red	Iron	Yellow	Stone
Green	Wood	Brown	Brick
Orange	Coal	Pink	Plaster
White	Concrete	Grey	Iron
Black	Steel	Dark Green	Brick
Black	Brick	Dark Green	Brick
Black	Brick	Dark Green	Brick
Black	Brick	Dark Green	Brick
Black	Brick	Dark Green	Brick
Black	Brick	Dark Green	Brick

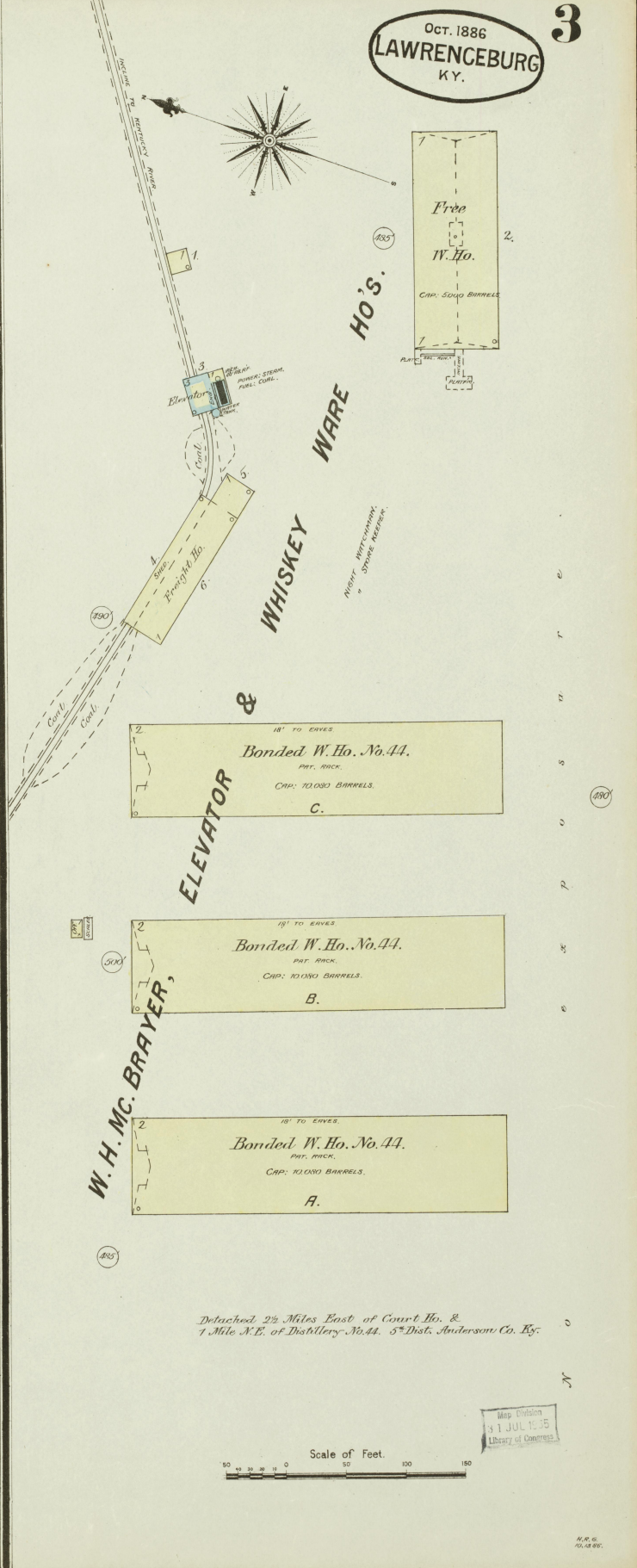
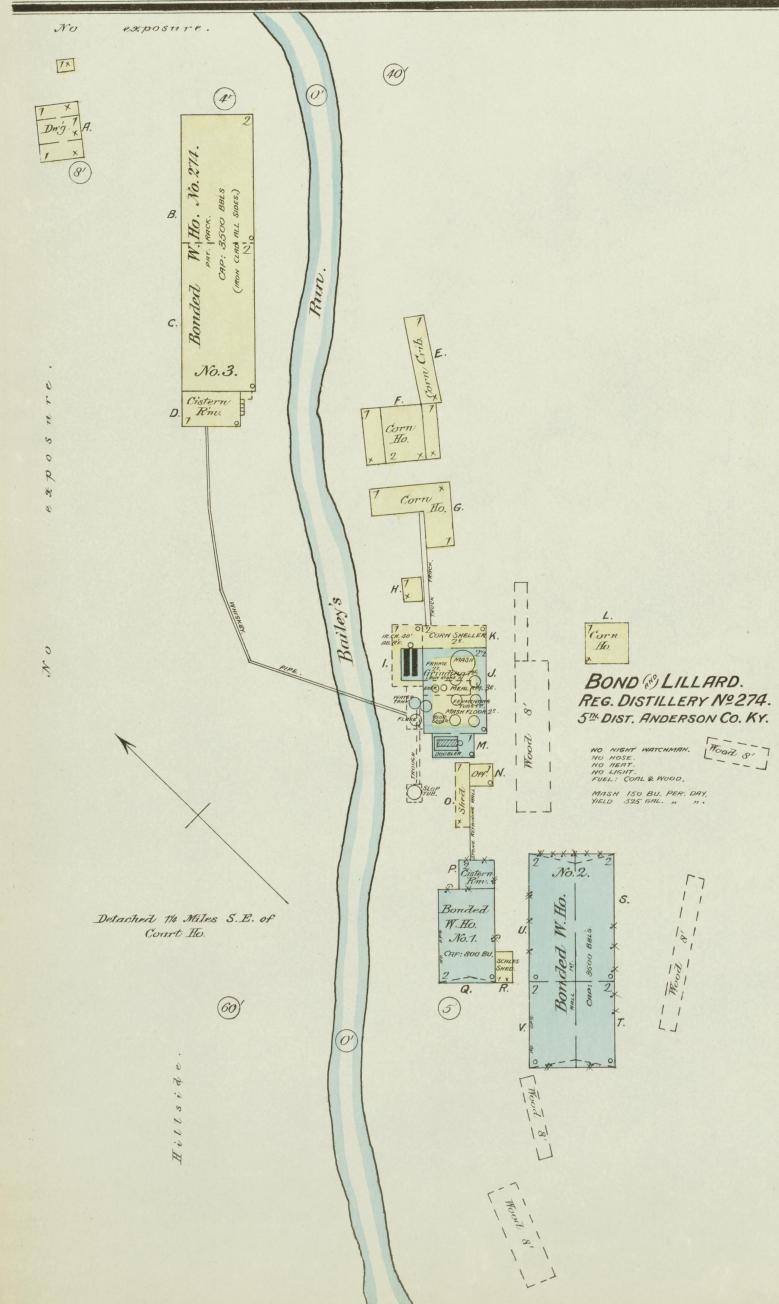
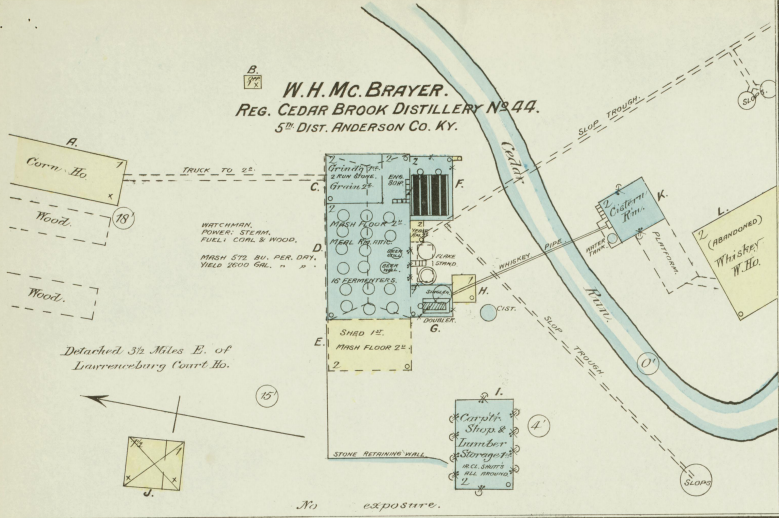


RIPY, DOWLING & CO.
LAWRENCEBURG ROLLER MILLS
 NIGHT WATER, NO ROSS, FIRE
 EXTENSIVE, BARS OF WHITE IRON,
 BUCKETS, PULVER, WOOD, COAL, STONE
 IN ONE, ALL KINDS OF MILL, GRINDERS,
 LAVERS, CRANES, STEAM, NO SPRING,
 MILLWHEELS, REELS, ROLLERS, HAND CRANES,
 SHUTTLING, ETC.
 1st FLOOR: ONE RUN STONE, 20 PAIR ROLLS (OBE)
 2nd FLOOR: 100 PAIR ROLLS (OBE)
 3rd FLOOR: 100 PAIR ROLLS (OBE)
 4th FLOOR: 100 PAIR ROLLS (OBE)
 5th FLOOR: 100 PAIR ROLLS (OBE)
 6th FLOOR: 100 PAIR ROLLS (OBE)



Map Division
 JUL 18 1888
 Library of Congress

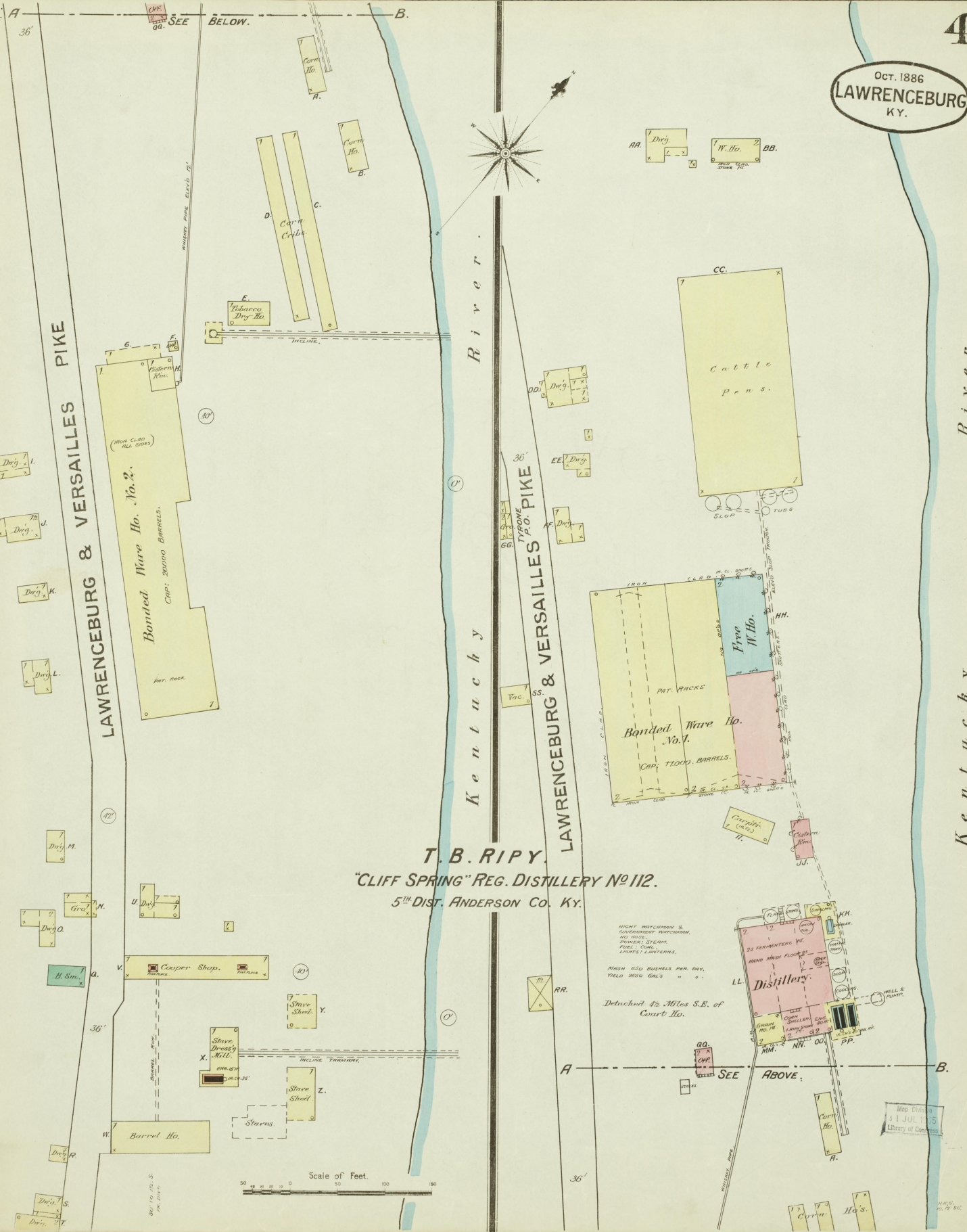
OCT. 1886
LAWRENCEBURG
KY.



Scale of Feet.
0 50 100 150

Map Division
31 JUL 1885
Library of Congress

Oct. 1886
LAWRENCEBURG
KY.

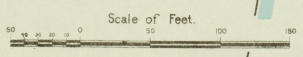


T. B. RIPPY.
 "CLIFF SPRING" REG. DISTILLERY No 112.
 5th DIST. ANDERSON CO. KY.

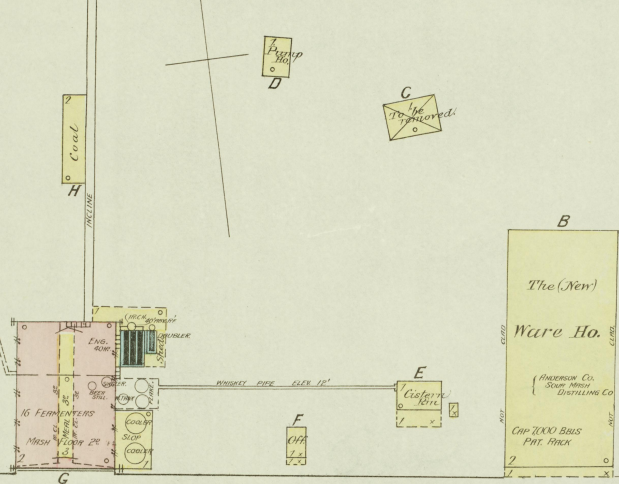
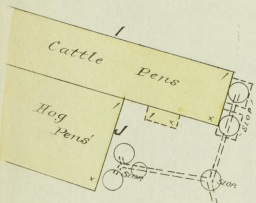
NIGHT PROHIBITION &
 SUNDAY REST RESTRICTION.
 NO WINE.
 PROHIBIT TO SELL
 FIRE, SUGAR,
 LIQUOR, LAUNDRIES.

MASH 650 BUSHELS PER DAY.
 YIELD 2850 GALS " "

Detached $\frac{1}{2}$ Miles S.E. of
 Court Ho.

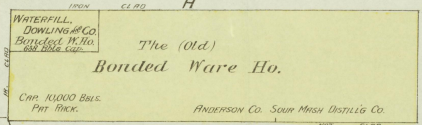


Map Division
 JUL 1885
 Library of Congress



**ANDERSON COUNTY SOUR MASH
DISTILLING CO.**
T. B. RIPP, PROP'R.
Reg. Distilly No. 418, 5th Dist. Anderson Co. Ky.

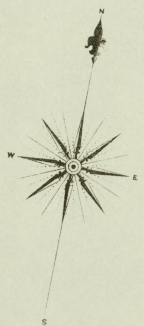
MASH CAP. PER DAY 600 BUSH.
FINE YIELD 2755 GALS.
HIGH WATTCOMB. FULL COR.
LIGHTS, LANTERNS & KEYS OR.
POWER, STEAM, NO WHEEL.
DETACHED 4 MILES S.E.
OF COURT HO.



RIPP'S PIKE

Pike

No exposure



COUNTY ROAD



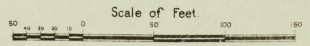
WATERFILL & DOWLING
WATERFILL & FRAZIER
Reg. Distilly No. 41, 5th Dist.
Anderson Co. Ky.

MASH CAP. 60 BUSH. PER DAY.
FINE YIELD 210 GALS.
NO WATTCOMB. FULL WOOD & COR.
POWER, STEAM, NO WHEEL.
DETACHED 4 MILES S.E.
OF COURT HO.



Bailey's Run

No exposure



Map Division
JUL 10 1885
Library of Congress

OCT. 1886
LAWRENCEBURG
KY.

A
Bonded
Ware Ho.
3000 Bbls. cap.
IRON CL. ALL SIDES

B
Dm^g



Bonded Ho.
WALKER

D
Fermenters
MASH FLOOR

J. M. WALKER
Reg. Distill^y No. 166, 5th Dist.
Anderson Co. Ky.

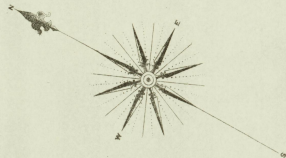
WIND MASH - 5000 BUSH.
MASH - 1000 BUSH. PER DAY.
YIELD THE 500 GALS. - -
WET LAMP.
LIGHTS, LAMPS,
FUEL, STEAM,
POWER, SYSTEM,
NO HEATING.

Detached 1 Mile N.E. of Court Ho.

Hog Pens E Sheds

Cattle F Sheds

Kentucky River



Cattle Pens C

MURPHY AND DOWLING
"BELLE OF ANDERSON"
Reg. Distill^y No. 400, 5th Dist.
Anderson Co. Ky.

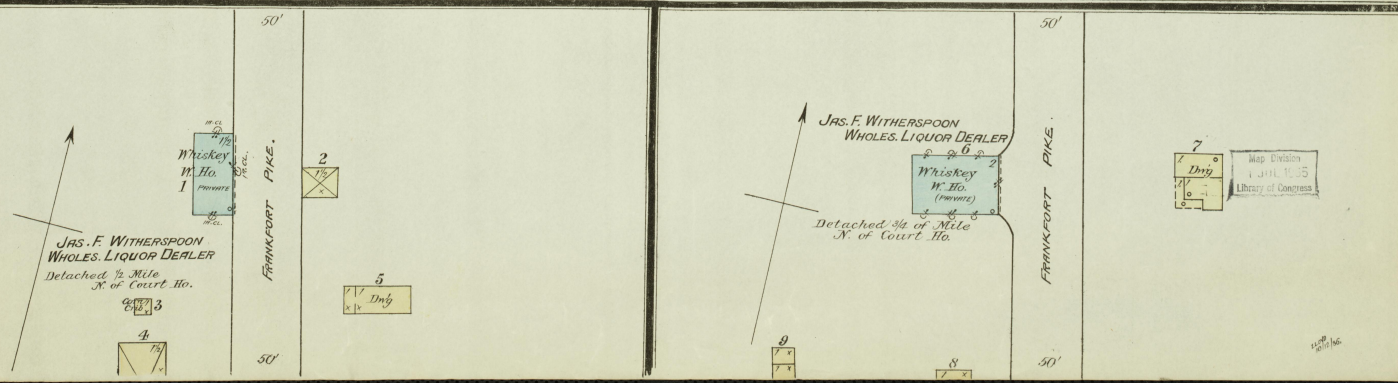
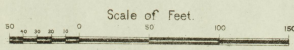
Detached 3 Miles N.E.
of Lawrenceburg Court Ho.

MASH - 1000 BUSH. PER DAY.
YIELD 5000 GALS. - -
WET LAMP.
LIGHTS, LAMPS,
FUEL, STEAM,
POWER, SYSTEM,
NO HEATING.

A
Bonded Ware Ho.
Cap. 4500 Bbls.

B
Corn
Cattle Ho.
Mash 25
Mash 25
Mash 25
Mash 25

No exposure



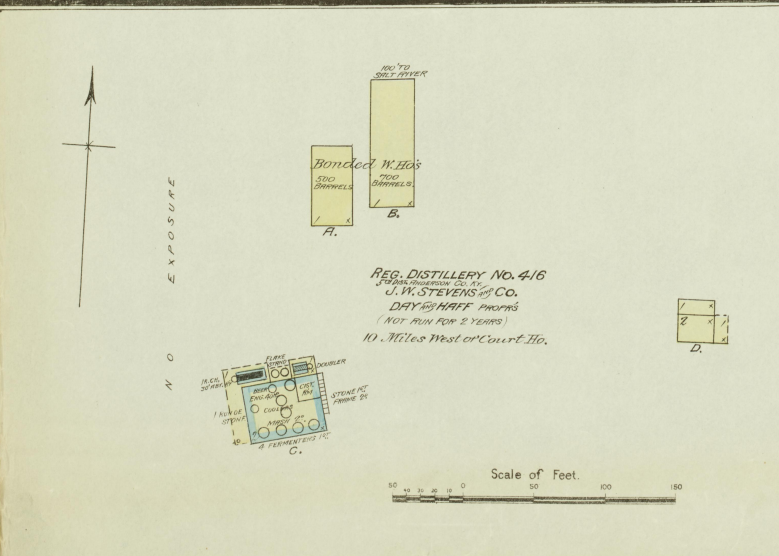
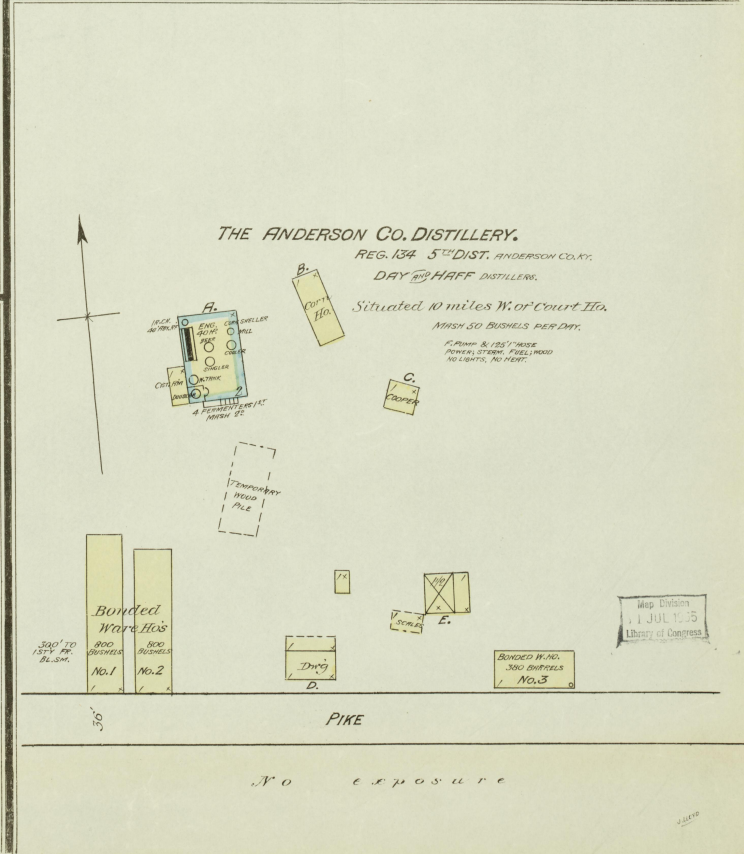
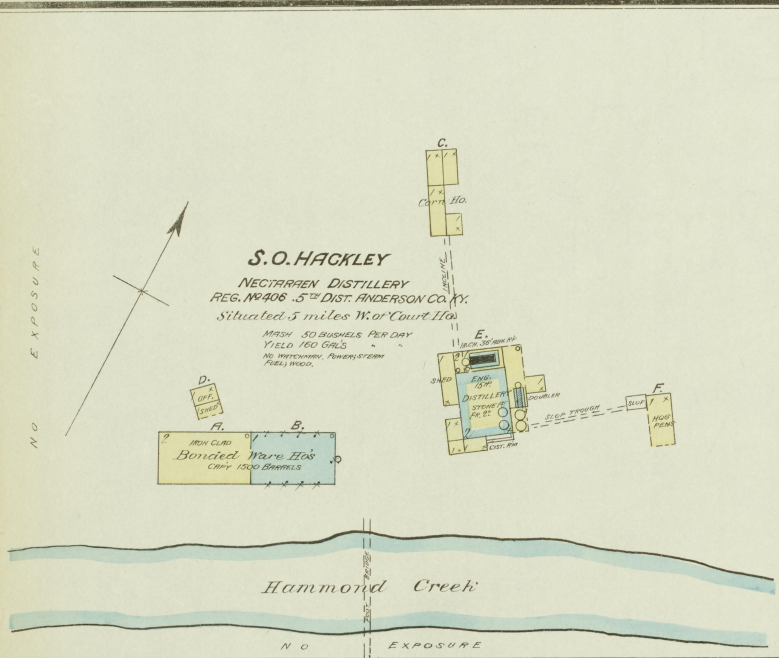
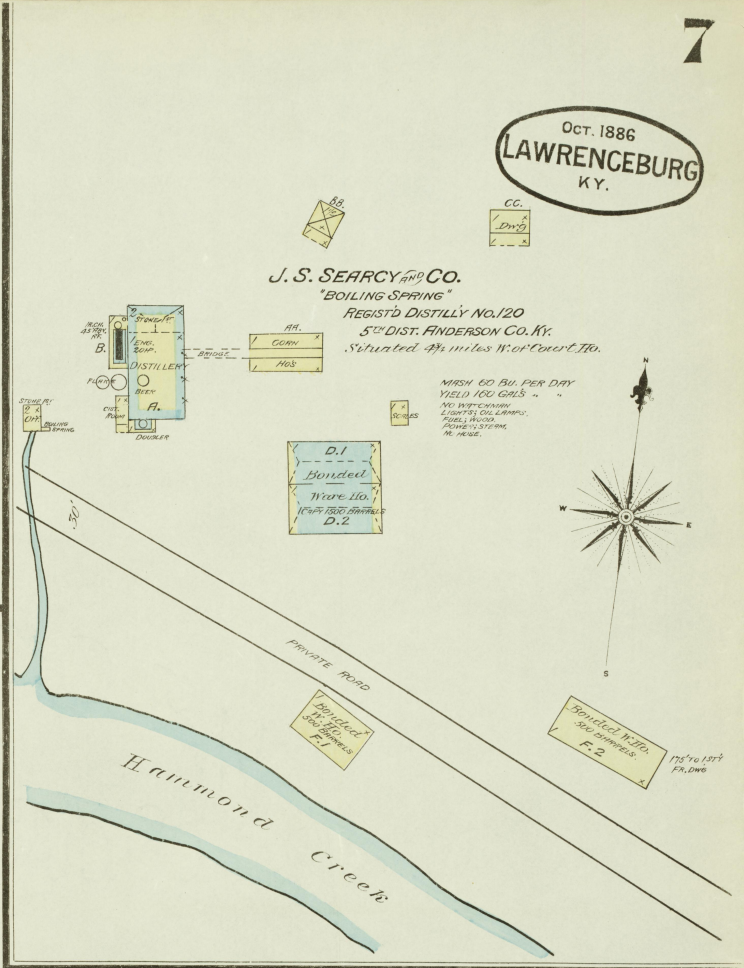
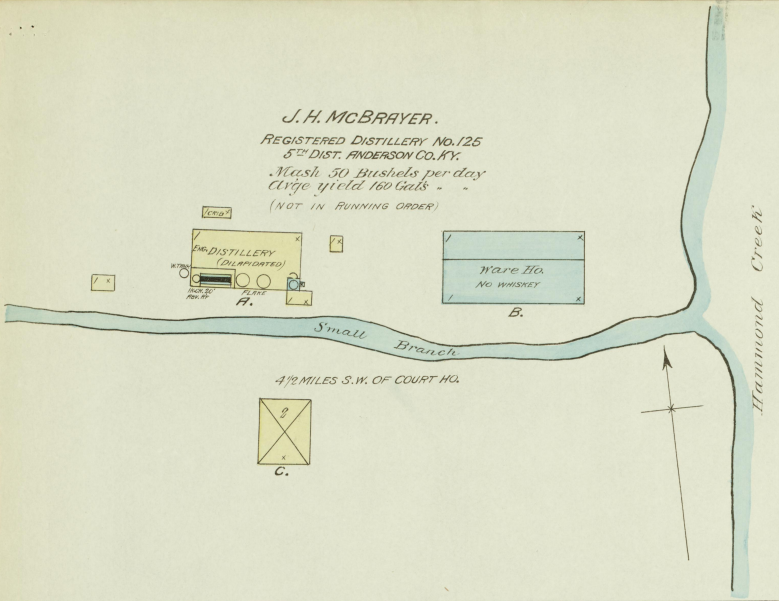
JAS. F. WITHERSPOON
WHOLESALE LIQUOR DEALER
Detached 1/2 Mile
N. of Court Ho.

JAS. F. WITHERSPOON
WHOLESALE LIQUOR DEALER
Whiskey W. Ho.
(FRONT)

Detached 3/4 of Mile
N. of Court Ho.

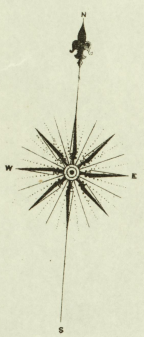
Map Division
JAN. 1886
Library of Congress

Oct. 1886
LAWRENCEBURG
KY.



Map Division
1 JUL 1935
Library of Congress

Oct. 1886
LAWRENCEBURG
KY.

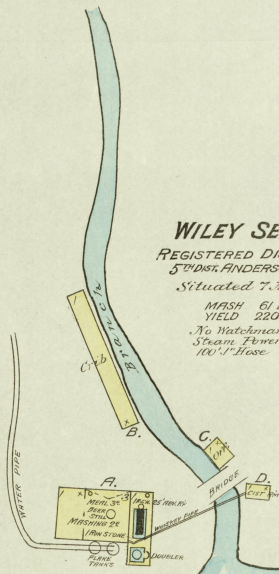
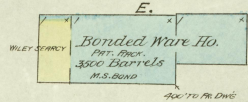


No exposure

No exposure

WILEY SEARCY (SUCCESSOR TO M.S. BOND)
REGISTERED DISTILLERY No. 45
5th DIST. ANDERSON CO. KY.
Sited 7 Miles S.E. of Court Ho.

MASH 61 BUSH PER DAY.
YIELD 220 GALS.
No Watchman, No Light, No Heat
Steam, Power, Fuel, Wood & Coal,
100' Horse.

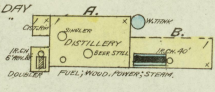


Gilbert's Creek

Beaver Creek

J.W. STEVENS.
REGISTERED DISTILLERY No. 367
5th DIST. ANDERSON CO. KY.
At Stillch 10 Miles S.W. of Court Ho.

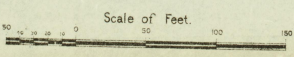
MASH 35 BUSHELS PER DAY
YIELD 125 GALS.
Not run for 2 Years
DRY STONE KEEPER



CHRISTIAN CHURCH

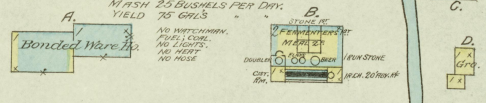
Dry

Grill



HAWKINS BROS.
REGISTERED DISTILLERY No. 236
5th DIST. ANDERSON CO. KY.
8 Miles S.E. of Court House

MASH 25 BUSHELS PER DAY
YIELD 75 GALS.
NO WATCHMAN, NO LIGHT, NO HEAT
NO STEAM, NO FUEL, NO WOOD,
NO HORSE.



Gilbert's Creek

Map Division
MAY 1885