

# GATEWAY TO THE MOUNTAINS

## ANDREW PICKENS RANGER DISTRICT SUMTER National Forest

The northwestern corner of South Carolina always has been a gateway to the mountains beyond—for warriors, peaceful travelers and now for those seeking recreation and relaxation.

The Cherokee Indians came through the area in their conquest of the Piedmont tribes. The high plateaus and mountains were the last strongholds of the Cherokees in South Carolina before they moved out in 1792 after signing a treaty with Andrew Pickens.

Colonel Andrew Williamson's attack on British-led Cherokees at the start of the American Revolution was launched from this area. And Andrew Michaux and William Bartram came through the valleys searching for new and rare plants of the Appalachians.

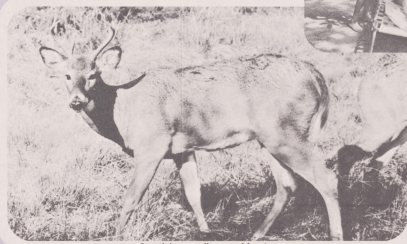
Today, there is still a gateway to the mountains—the Andrew Pickens Ranger District of the Sumter National Forest. Now it is a gateway to mountain pleasures without rugged mountain driving. Visitors can leave the hustle and bustle of the industrial piedmont and reach the cool of the highland forest after a short drive. The abrupt change from rolling country to mountains has created many spectacular waterfalls.



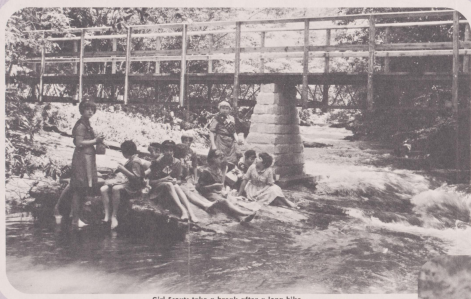
Learning about trees is part of camping.

For those who like to see the outdoors as it once was, Ellicott Rock Scenic Area is one spot that is in much the same condition it was when the Cherokees lived and hunted in the area.

One of the attractions of the Andrew Pickens Ranger District is the Chattooga River. It begins as a small stream high in the mountains of North Carolina but before it flows into Tugaloo Lake some 50 miles away it becomes a rough whitewater stream that taxes the ability of expert canoeists. The Chattooga forms the border between South Carolina and Georgia for 40 miles.



Deer thrive on well managed forests.



Girl Scouts take a break after a long hike.

Visitors find a variety of activities on the Andrew Pickens Ranger District. They can picnic and camp in areas where environmental quality, not quantity, was the first consideration. They can wander through the forest along 15 miles of hiking trails or pick from more than 80 miles of trout streams for fishing.

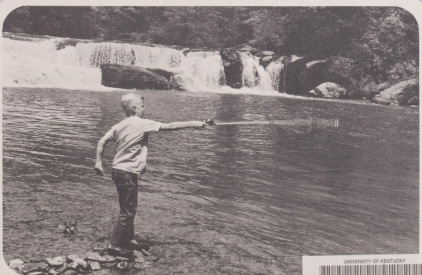


Ranger explaining forest ecology to Boy Scouts.

The Forest Service has been studying the Chattooga as a possible candidate for inclusion in the National Wild and Scenic Rivers Act. In many places, the Chattooga is wild and remote and is accessible only on foot.

The resources of National Forests—timber, water, wildlife, forage and recreation—are managed for the continuing benefit of the American people. This management provides for the immediate needs of the people and makes certain that future needs also can be met.

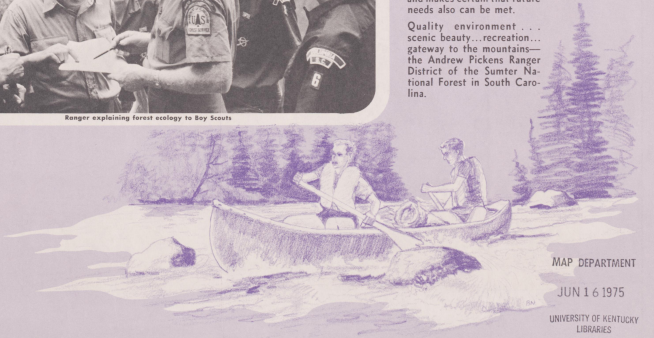
Quality environment... scenic beauty... recreation... gateway to the mountains—the Andrew Pickens Ranger District of the Sumter National Forest in South Carolina.



Fishing—sport for all ages.

The Forest Service cooperates with the South Carolina Wildlife Resources Department in the management of fishing and hunting, which are under state regulation. Hunting was resumed only a few years ago and animals still have a sense of security, making it easier for visitors to see wildlife in the forest.

All the beauty of a mountain springtime can be found on the Andrew Pickens and, in the fall, the flaming colors linger on after winter has arrived just a few miles to the north.



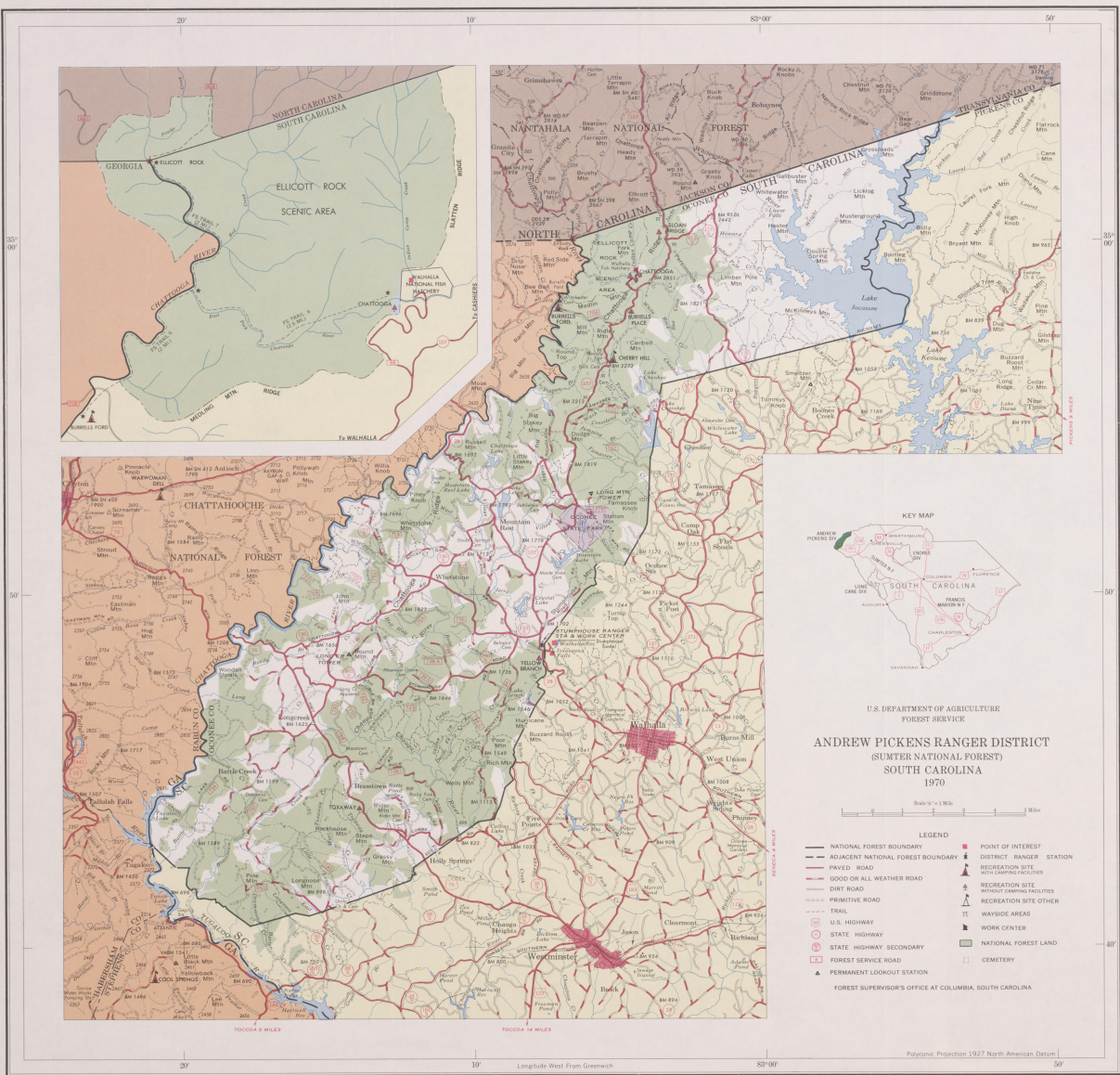
MAP DEPARTMENT

JUN 16 1975

UNIVERSITY OF KENTUCKY LIBRARIES

63912 .S9 : 1970 .U6





U.S. DEPARTMENT OF AGRICULTURE  
FOREST SERVICE—SOUTHERN REGION



**GATEWAY TO THE MOUNTAINS**  
SUMTER National Forest



**PREVENT FOREST FIRES!**

The Forest Service, U.S. Department of Agriculture, is dedicated to the principle of multiple use management of the Nation's forest resources for sustained yields of wood, water, forage, wildlife, and recreation. Through forestry research, cooperation with the States and private forest owners, and management of the National Forests and National Grasslands, it strives—as directed by Congress—to provide increasingly greater service to a growing Nation.

For Additional Information Contact:  
FRANCIS MARION & SUMNER  
NATIONAL FORESTS  
1801 ASSEMBLY STREET  
COLUMBIA, SOUTH CAROLINA 29201  
OR  
DISTRICT RANGER  
ANDREW PICKENS RANGER DISTRICT  
WALHALLA, S.C. 29691