

Frankfort Ky.
November 1890

We, the insurance agents of Frankfort, Ky. have examined the map of our city made by the Sanborn-Perris Map Co. of New York, and endorse it as being very complete and accurate, and recommend same to all companies we represent, being the best map extant.

John B. Lindsey Pres.
H. H. Watson Secy.
G. H. Berry
Jacob Jungblut
Chas. J. Oxum
J. J. Montgomery

FRANKFORT

FRANKLIN CO. KY.

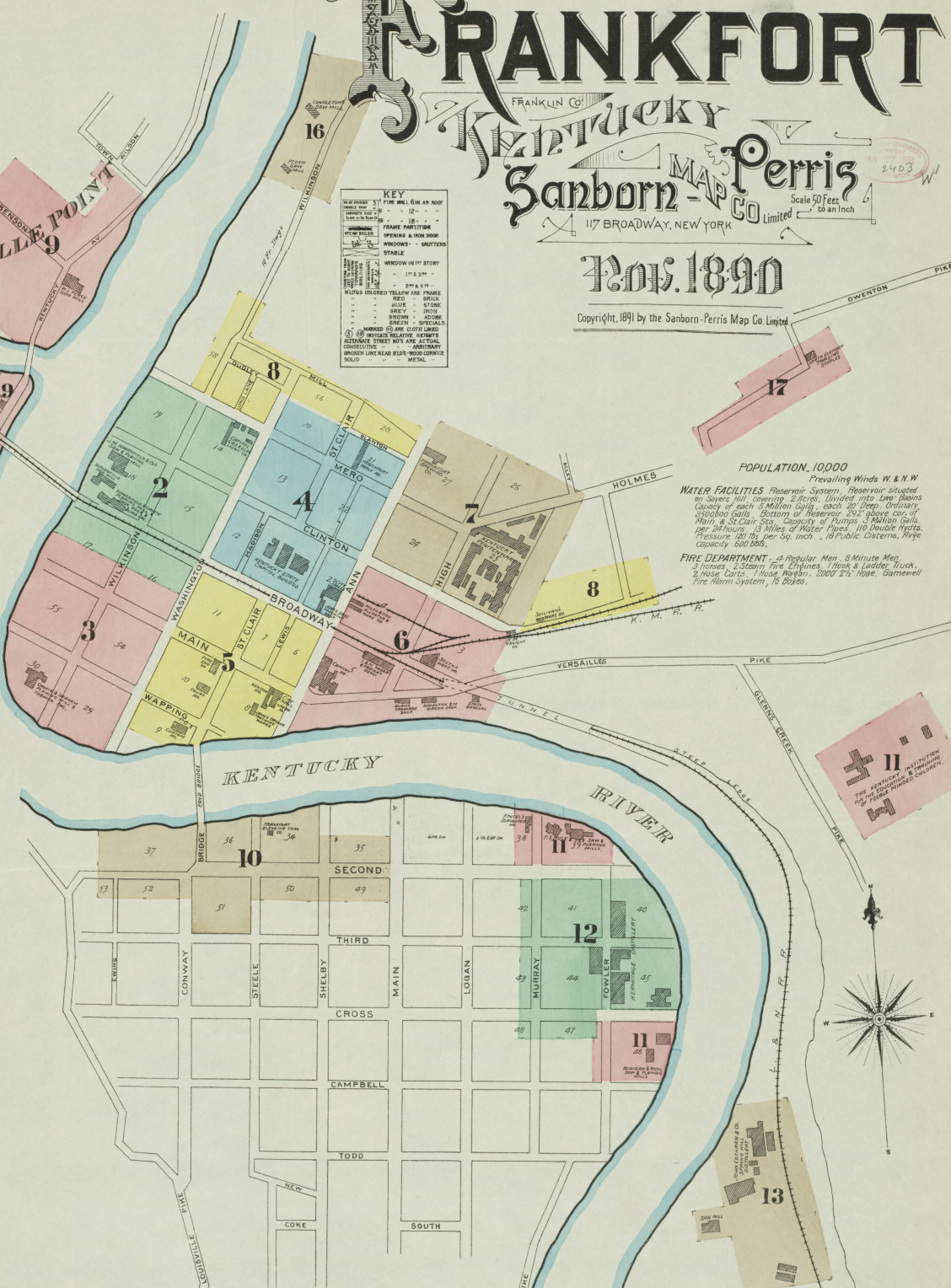
Sanborn-Perris MAP CO. Limited
117 BROADWAY, NEW YORK
Scale 50 Feet to an Inch
No. 1890

Nov. 1890

Copyright, 1891 by the Sanborn-Perris Map Co. Limited

KEY

NEW BUILDING FIRE W. L. G. M. AN. ROOF
 LIGHT WOOD 12"
 HEAVY WOOD 12"
 LIGHT BRICK
 HEAVY BRICK
 FRAME PARTITION
 IRONING & NEW WOOD
 WINDOWS - SHUTTERS
 STAIRS
 WOODWORK 11" STORY
 11" 3 1/2"
 2 1/2" 4 1/2"
 RIDGES COLORED YELLOW FRAME
 RED BRICK
 IRON
 IRONING & NEW WOOD
 GREEN SPECIALS
 MARKED ON ONE CORNER
 (S) INDICATE RELATIVE HEIGHTS
 DISTANCE STREETS NOT ACTUAL
 COERCIVE - ARBITRARY
 BROKEN LINE NEAR BLUE WOOD CORNER
 SOLID - METAL



INDEX.

For "BEARS FOOT," see Sheet No. 9.

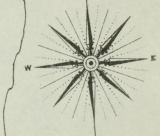
STREETS.	Page
A	
Ann	100-214
Aspen	125-145
B	
Belle Point	100-117
Blanton	301-317
Bright	1-29
Broadway	1-144
Buffalo Alley	400-545
C	
Clinton	1-144
Cross	301-317
Conway	400-545
D	
Dunigan & Nicol, Saw & Pig Mills	11
E	
Episcopal Church	5
Ellettsburgh	1-144
F	
Fine's Slaughter House	11
Frankfort Brewing Co.	5
Cooper Works	10
Heritage Coal Co.	10
Free School	4
Halt Works	11
G	
Gaines, J. W. & Son, Coal Yard	3
W. A. & Co., Hermitage Distlry	12
Goldsmith, P., Cooper Works	5
Griffin Hotel	5
H	
Hamilton & Co., Carriage Shop	6
Hercules, C. C., Mill House	4
Hermitage Distlry	12
Hughes, W. J. & Co., Saw & Pig Mills	11
Hume Block	4
I	
Independent Baptist Church	4
J	
Jones Bros., Machine Shop	4
K	
Kentucky Insult, for Female Minded	11
Millard E. H., Freight Ho.	7
Military Institute	2
Penitentiary	16
River Mills	16
State Arsenal	4
Capitol	5
L	
Kenyon Hotel	5
M	
Labrot & Graham, Distillery	14
L & N. B. B., Depo.	8
Lindsay, J. B., Warehouse	5
N	
Morgan & Darvell, Wagon Shop	7
Masson-Ford Co.'s Penitent Shop	7
Methodist Episc. Church	5
Mills & Son, River Mills	16
Grain Elevator	6
O	
North Elkhorn Training Station	17
Old Fellows Block	10
O. F. U. Distillery	15
Old Cow Distillery	14
Oscar Pepper Distillery	14
Opera House	5
P	
Pedler, J. C., Saw Mill	16
Pepper, S. T., Stone Mill, etc.	9
W. L., Saw Mill	9
Presbyterian Church	2
R	
Rule, P. S., & Co., Saw & Pig Mills	11
S	
Saffell, J. & J. M., Distillery	13
W. B., Distillery	17
St. Joseph's Academy	5
Southern Family Church	16
South S. Warehouse	6
Spring Hill Distillery	16
Stagg, G. T., Co., Cooper Shops	16
State Normal School	11
Sullivan, M., Junk Yard	8
T	
Taylor, E. H., Jr., & Sons, Distillery	14
Taylor, J. N., Distillery	15
Turbin & Co., Horse Shoeing	6
U	
U. S. Custom House & P. O.	5
W	
Wakfield & Co., Saw & B. M. P. Co.	2
J. M., Lumber Yard, etc.	2 & 8
Saw Mill	2

SPECIALS.

A	
A. M. E. Church	10
Arnold Spring Distillery	10
B	
Baptist Church	10
Blakemore, J. N., Distillery	10
Burns, T., Carriage Shop	10
C	
Capitol City Machine Works	10
Chas. & Elletts, L. Co.	2
Hotel	10
Capitol Distillery	10
Chapel Distillery	10
Chas. Bon Distillery	10

* Indicates only one side of Street shown.

POPULATION, 10,000
 Prevailing Winds W. & N.W.
WATER FACILITIES Reservoir System Situated on Sayers Hill covering 2 Acres. Divided into Two Basins Capacity of each 5 Million Gallons, each 20 Deep. Ordinary 350,000 Gallons. Bottom of Reservoir 250' above cor. of Main & St. Clair Sts. Capacity of Pumps 3 Million Gallons per 24 Hours. 13 Miles of Water Pipes. 110 Double Hydrants. Pressure 120 lbs. per Sq. Inch. 18 Public Cisterns, Hydrant Capacity 500,000.
FIRE DEPARTMENT A Regular Man, 6 Minute Men, 3 Horses, 2 Steam Fire Engines, 1 Hook & Ladder Truck, 2 Hose Carts, 1 Hose Wagon, 2000' H. Hose, Garnered Fire Alarm System, 15 Boxes.



Map Sold
 31 JUL 1895
 Library of Congress

SEE

SHEET

LOW LINE ALLEY 50'

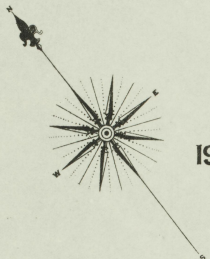
No. 8.

Nov. 1890
FRANKFORT
KY.

2

MERO

CAPITOL GAS & ELECTRIC LIGHT CO.
FUEL COAL
SMALL WARE
IN BRICKS NO.



19

14

CLINTON

WILKINSON

WASHINGTON

SHEET

SEE

W. J. HUGHES & Co.
SAW & PLANING MILL.
WENT WESTON, P. POWER 200' ST. BASE.
MFT. STEAM, PULP, SAWDUST, & SLABS.
NO LIGHTS, SLEETS, PATENTING LANTERN.
PLANING MILL.
17' PLANK, MATCHES & 4' SIK.
SAND PAPER MARK, SLIT MARK.
TERRAZO, STICKS, MULLING, MORTICE,
60' SAW, JOINTER, LATHE.

300,000' 8'
AVERAGE 10'
Lumber 14'

J. M. WAKEFIELD
SAW MILL
PLANING MILL
SLABS
SHED
Lumber Yard

400,000' DRIVE
Lumber 14'

BROADWAY

Scale of Feet.
0 50 100 150

17

16

SEE

A SHEET

No. 3. B.

SEE SHEET

No. 5.

SEE SHEET

W. H. H. & Co.

Nov. 1890
FRANKFORT
KY.



Scale of Feet.

Map Drawn
31 JUL 1890
Library of Congress

SEE SHEET No. 8.

SEE SHEET No. 2.

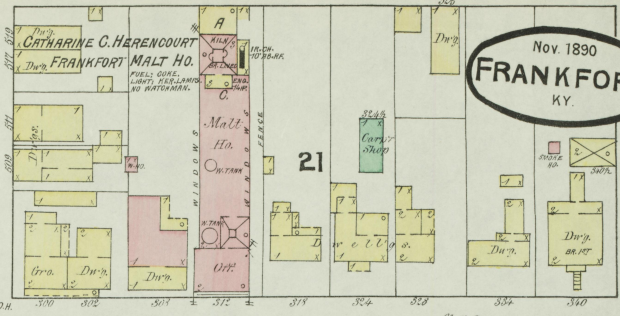
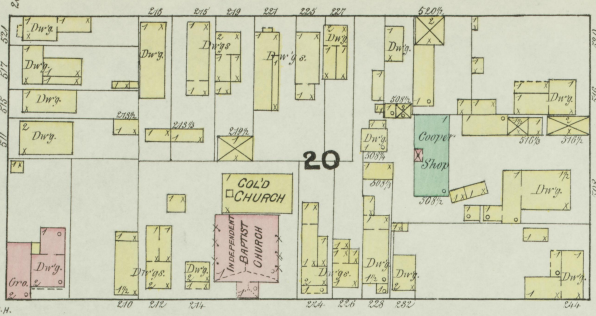
SEE

SEE SHEET

BLANTON No. 8.

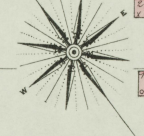
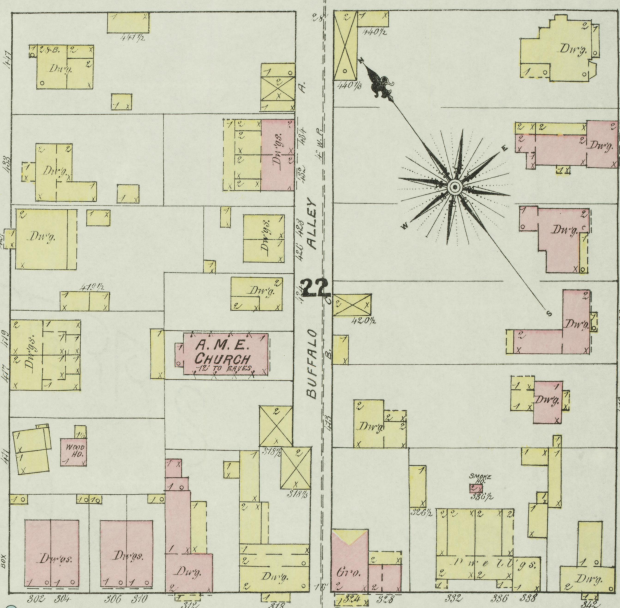
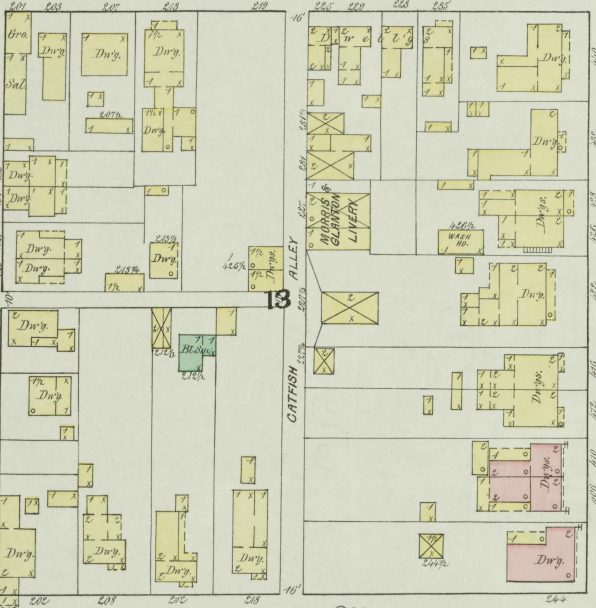
4

Nov. 1890
FRANKFORT
KY.



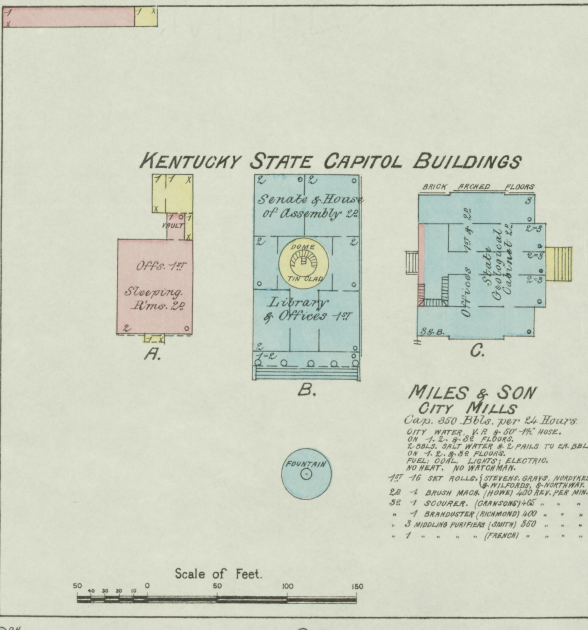
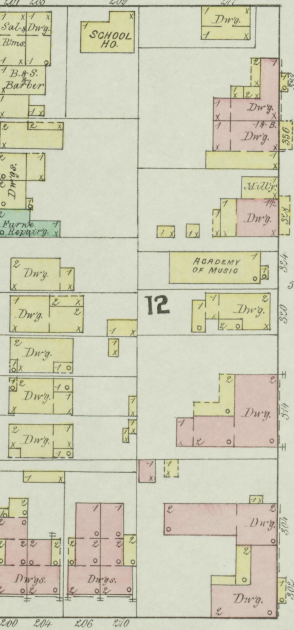
MERO

SEE SHEET No. 7.

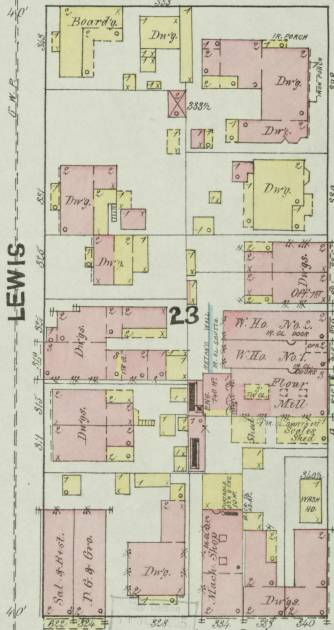
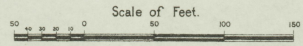


GLINTON

SEE SHEET No. 6.



KENTUCKY STATE CAPITOL BUILDINGS
Senate & House of Assembly 22
Library & Offices 187
MILES & SON CITY MILLS
CAP. 500 BRG. 207 24 HOURS
CITY WATER 1/2 IN. 100-100' HORIZ.
ON 1/2 IN. 24" DIAM. PIPES
2" DIA. 1/2" WATER & 2" PIPES TO EA. BLDG.
18" 4" DIA. 1/2" WATER & 2" PIPES TO EA. BLDG.
PULL COILS, LIGHTS, ELECTRIC, 100 WATT 100 WATT MAN.
157 16 SET ROLLS, STEEL, 2000 YDS. HOISTED
16 1/2" DIA. 1/2" DIA. 1/2" DIA. 1/2" DIA. 1/2" DIA.
20 1 BRUSH MARK (HORN) 400 BRG. PER MIN.
30 1 SCOUTER. (CHAMPION) 100
1 1 BRUSH MARK (HORN) 400
3 1 BRUSH MARK (HORN) 400
1 1 BRUSH MARK (HORN) 400



BROADWAY

SEE SHEET

No. 5.

1890

SEE SHEET NO. 2
SEE SHEET NO. 3
WASHINGTON

SEE SHEET NO. 6
ANN

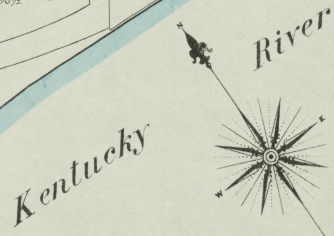
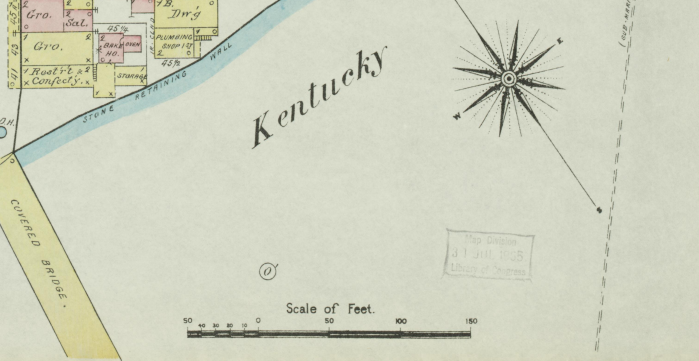
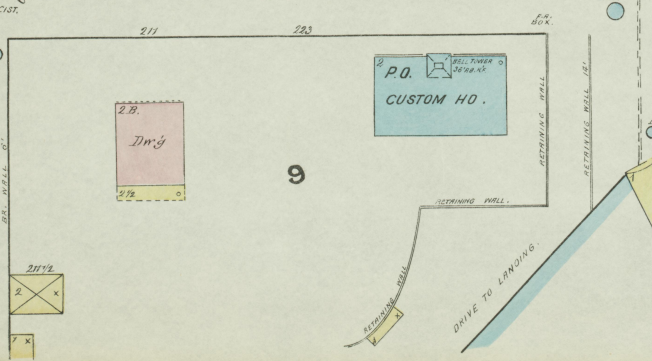
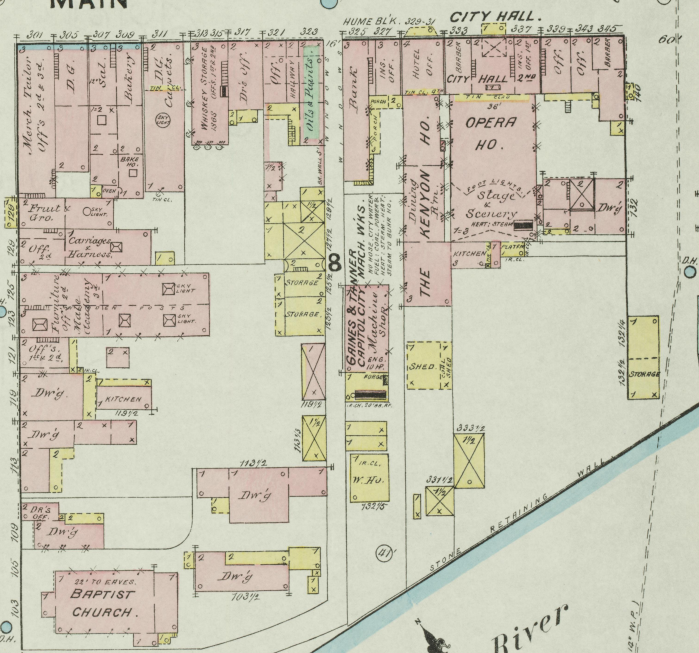
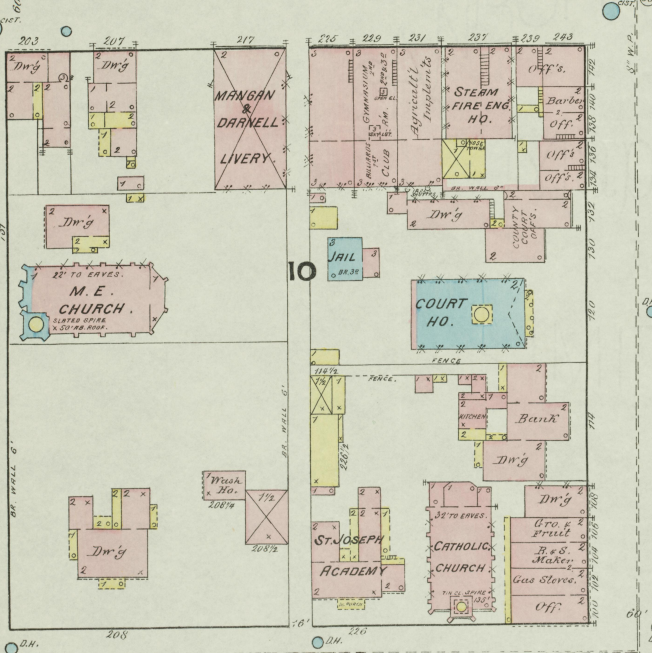
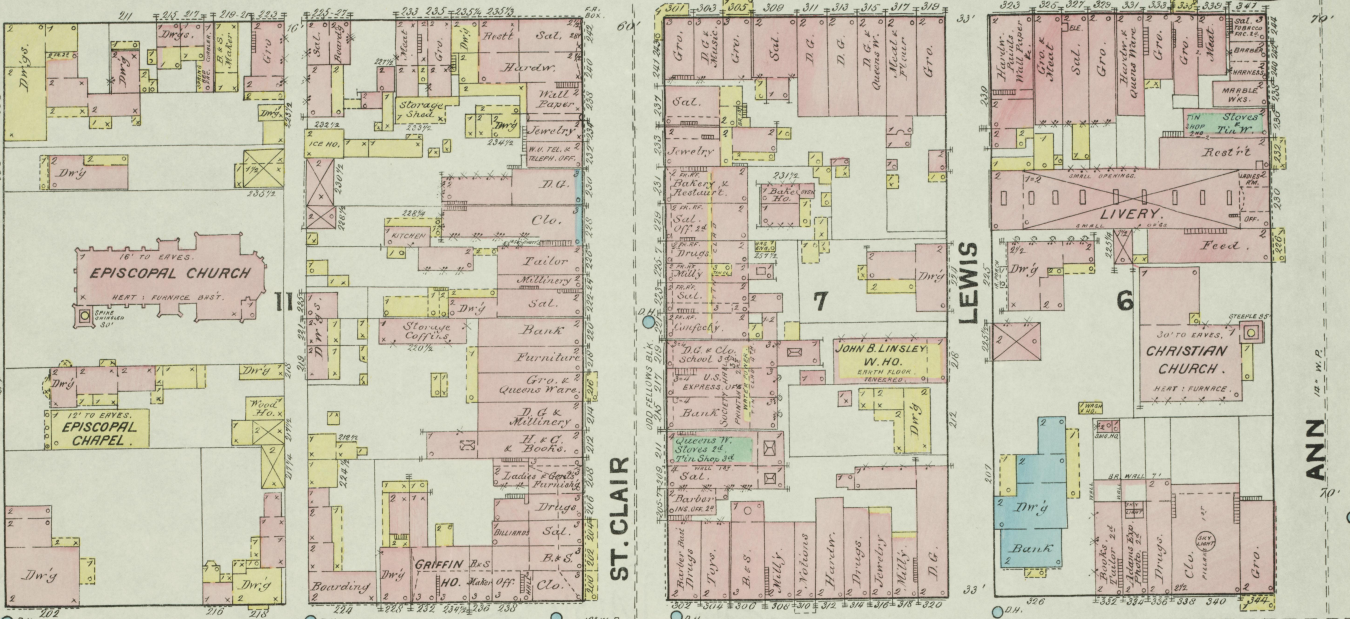
BROADWAY

ST. CLAIR

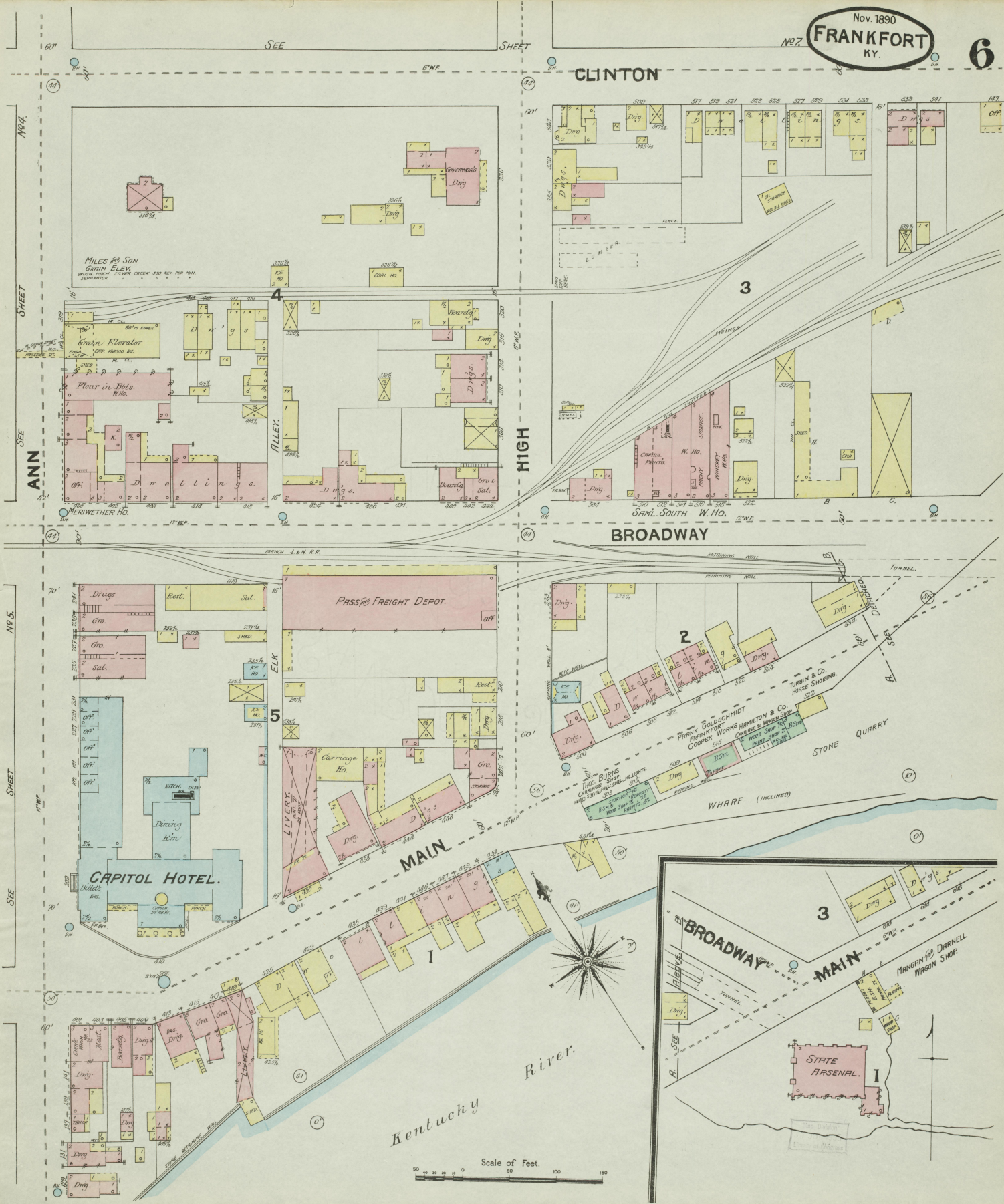
LEWIS

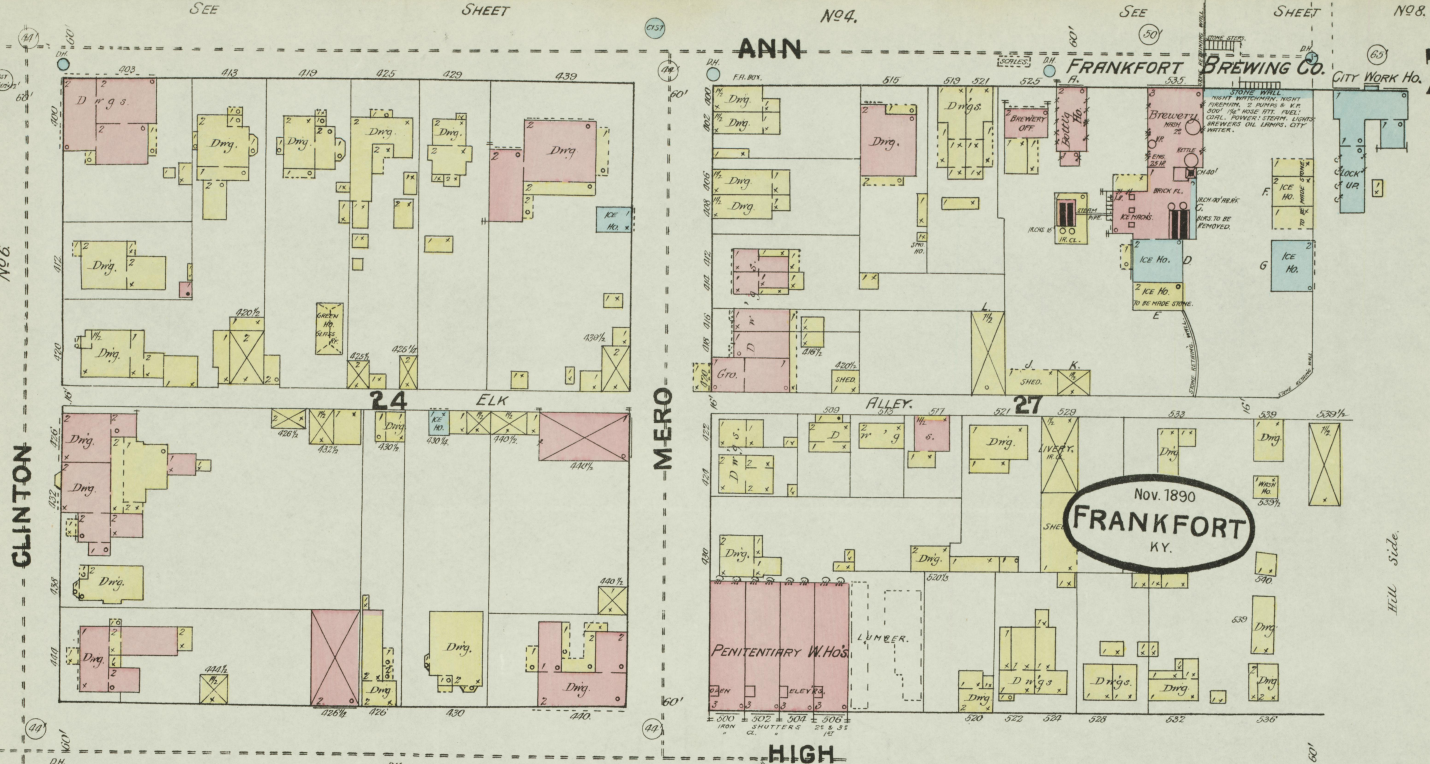
MAIN

WAPPING



Scale of Feet.

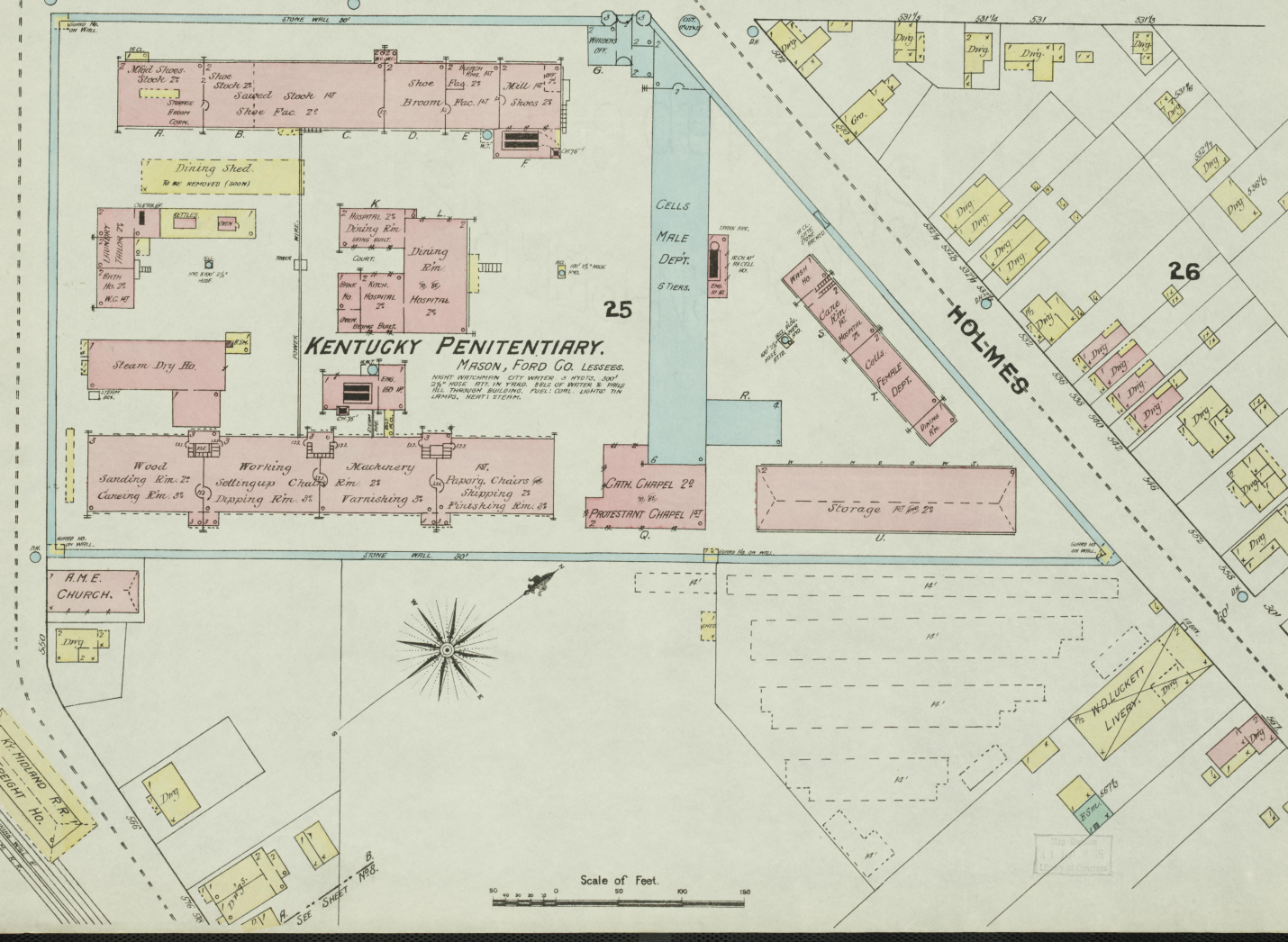




CITY WORK No. 7

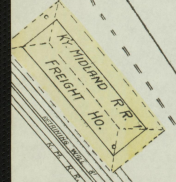
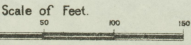
Nov. 1890
FRANKFORT
KY.

Mill Side.

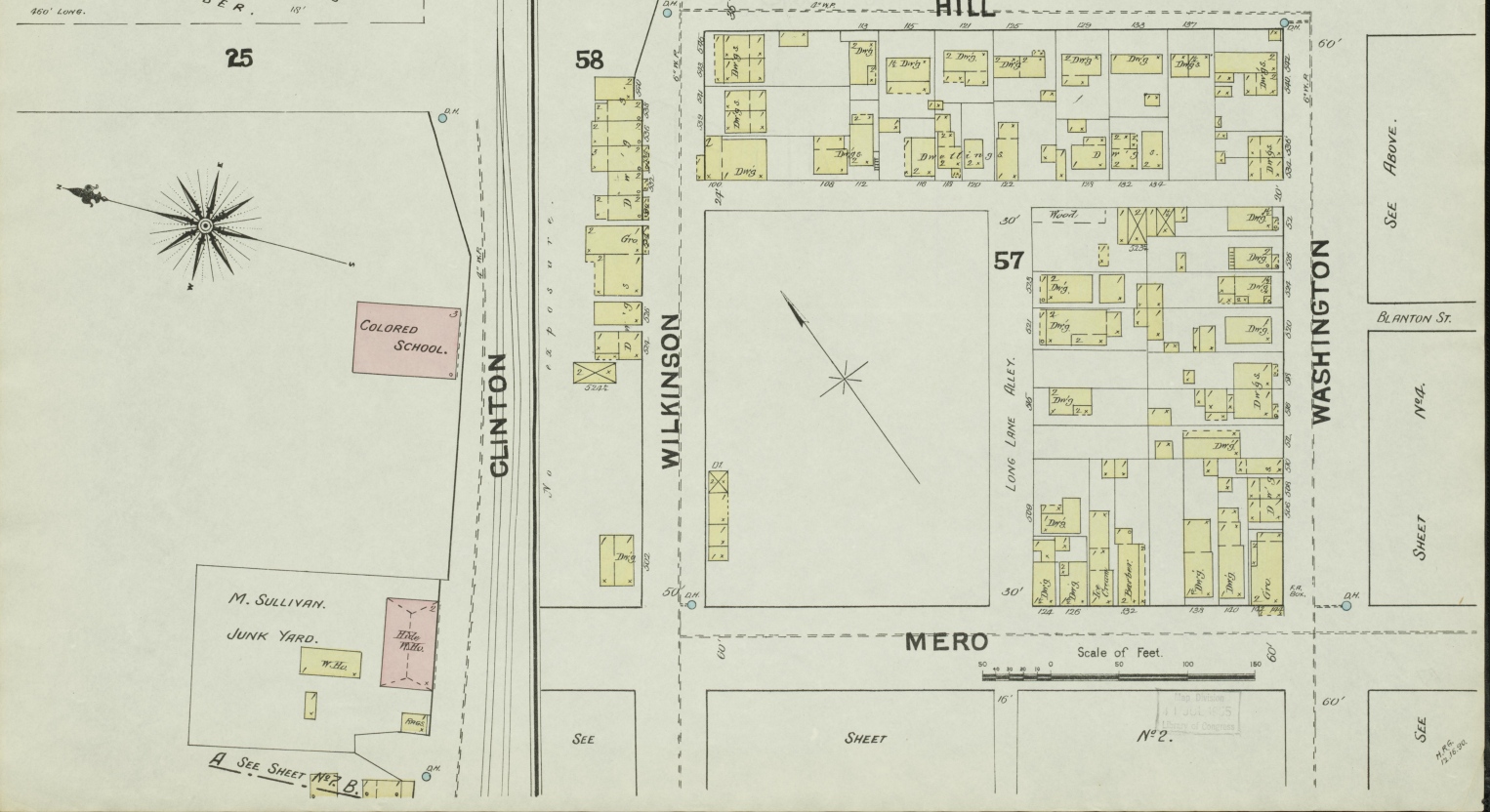
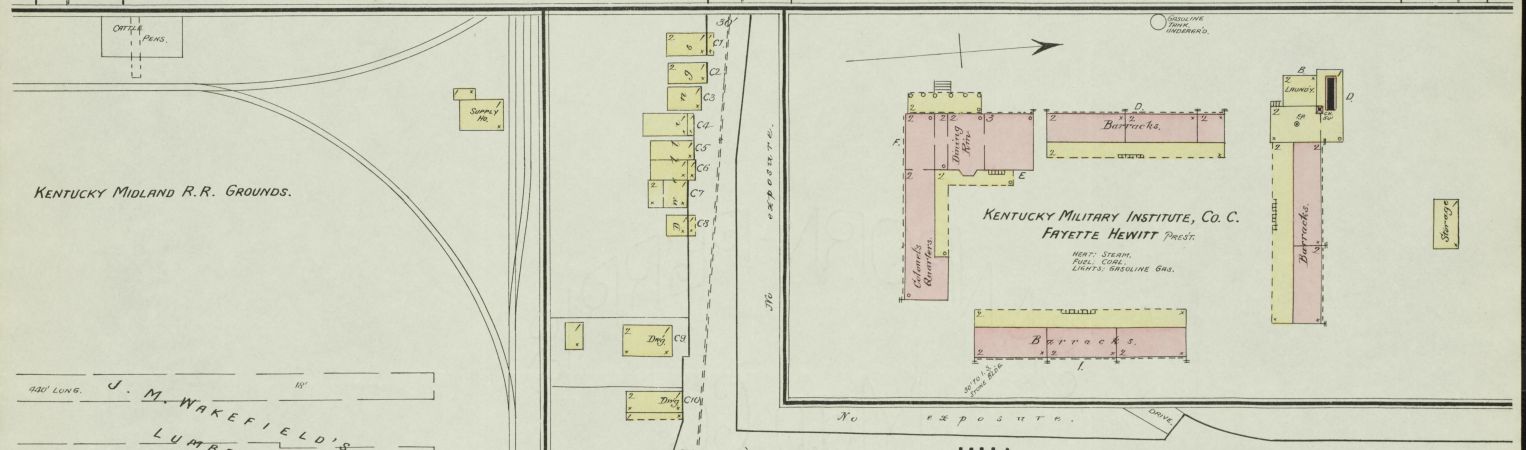
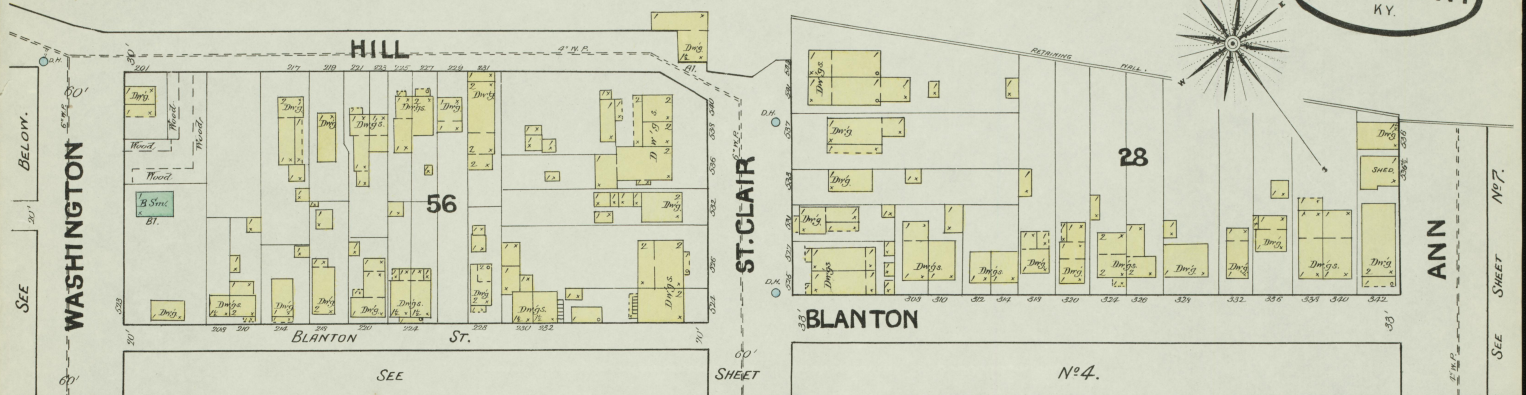


SHEET

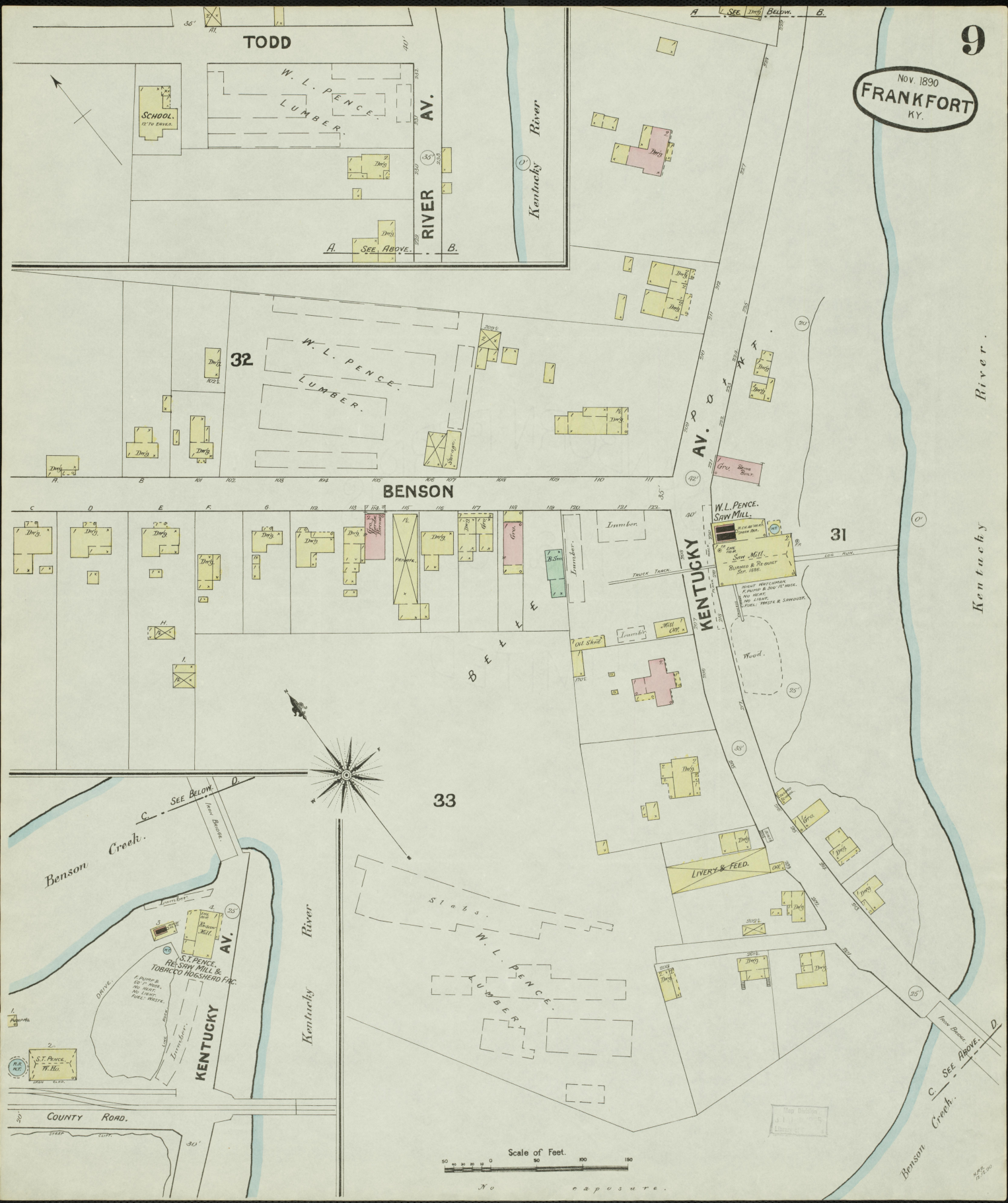
SEE



SEE SHEET NO. 8.



NOV. 1890
FRANKFORT
KY.

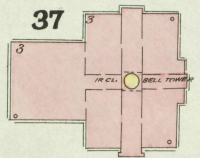


Scale of Feet.
0 50 100 150

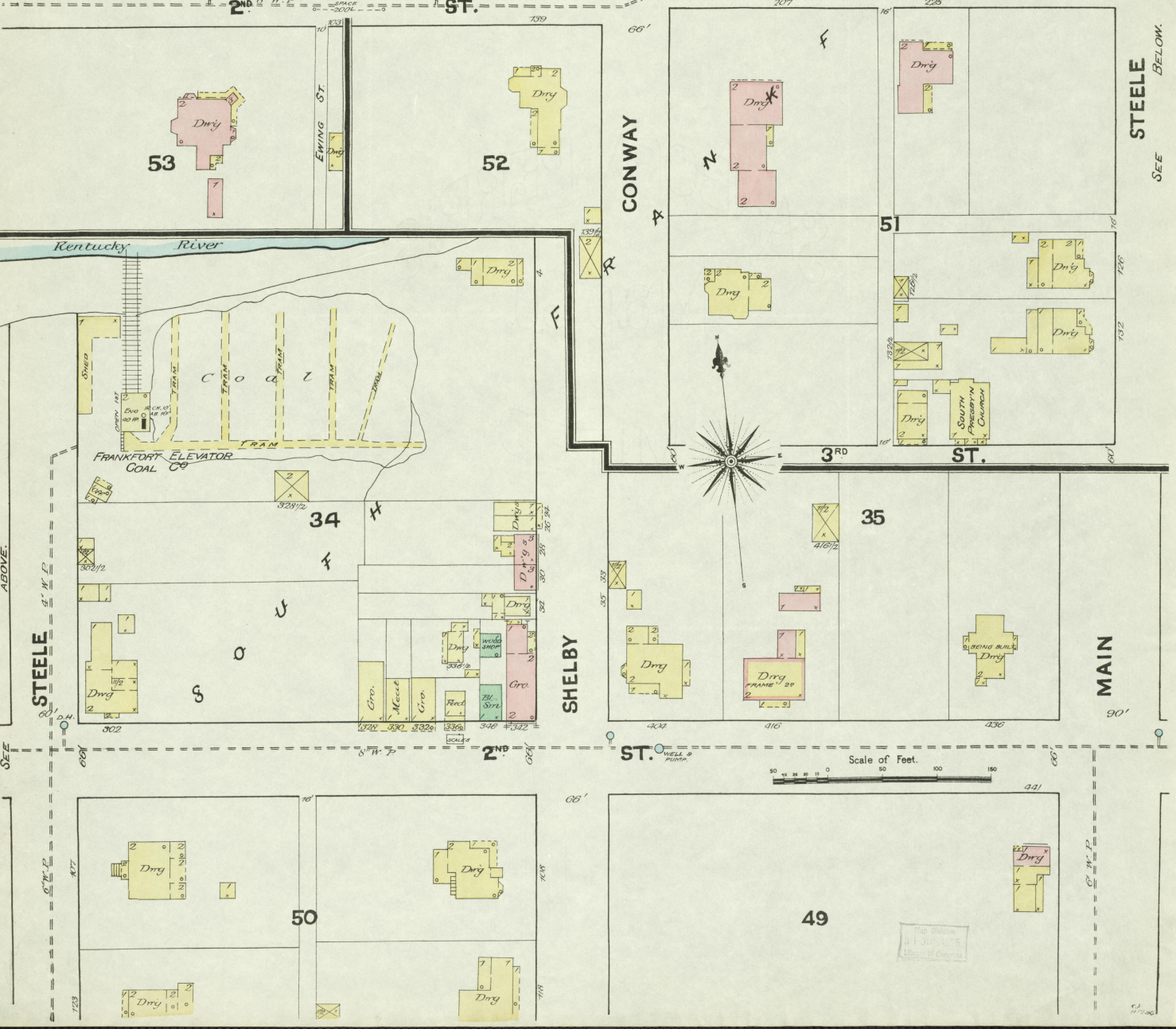
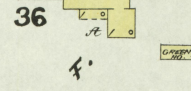
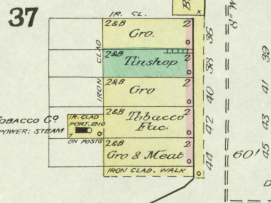
No captures.

Nov. 1890
FRANKFORT
KY.

FRANKFORT'S FREE SCHOOL.



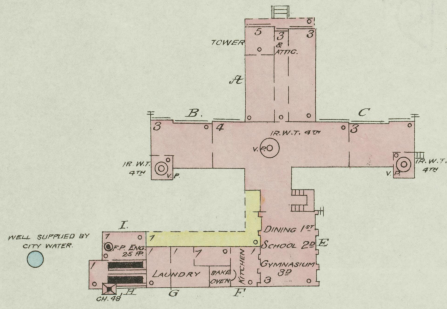
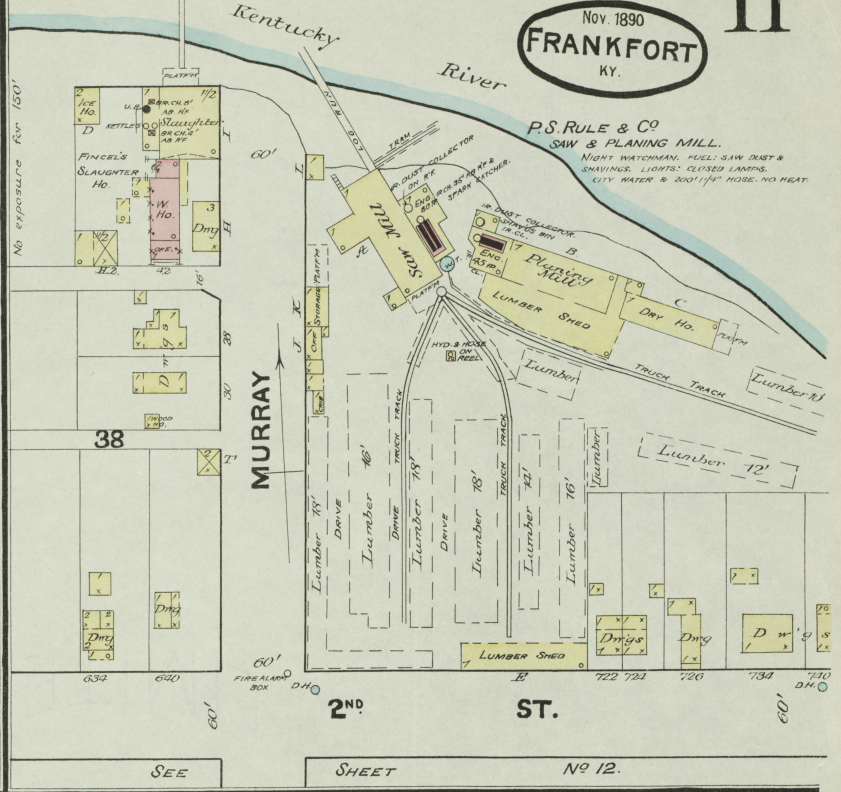
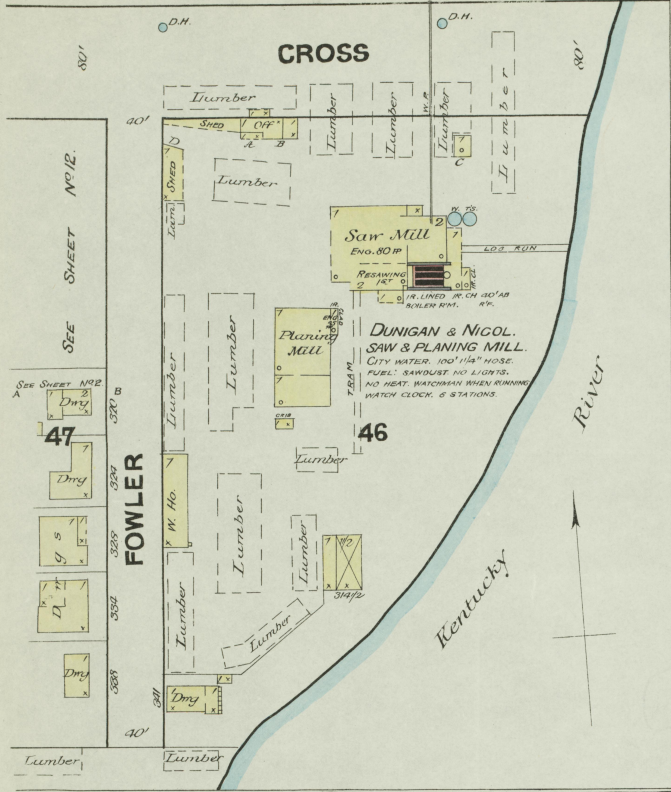
THE ETHEL TOBACCO CO
FUEL, COAL, PAPER, STRAW



SEE BELOW.
SEE ABOVE.

Scale of Feet.
0 50 100 150

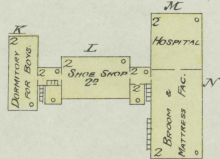
Map drawn
3-1-1901
L.H.S. of Phelps



THE KENTUCKY INSTITUTION FOR THE EDUCATION & TRAINING OF FEEBLE MINDED CHILDREN.

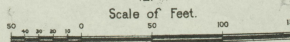
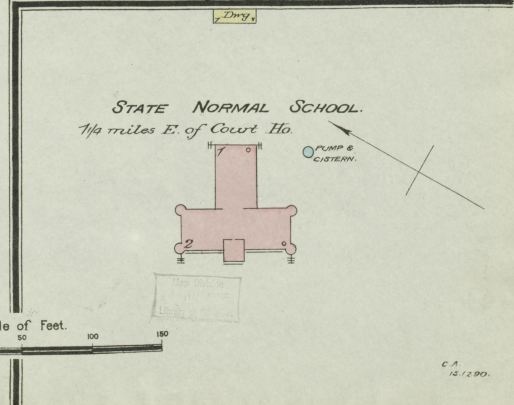
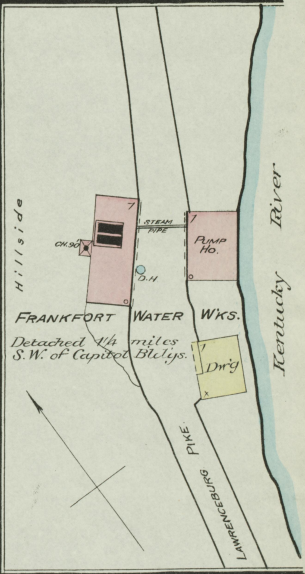
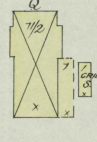
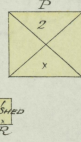
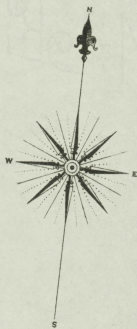
FORCE PUMP 3 LARGE IRON TANKS SITUATED IN REAR OF BLDG. WITH 2 1/2" V.P.S. & 2 1/2" HOSE ATTACHED. AT EACH END, ON EACH FLOOR. 600' 2 1/2" HOSE IN BLDG. 600' 2 1/2" HOSE IN BLDG. END. FIRM ATTACHED TO PUMP. FUEL: COAL. HEAT: STEAM. LIGHTS: GAS. (CITY)

Detached 3/4 mile S.E. of State Capitol Bldgs.

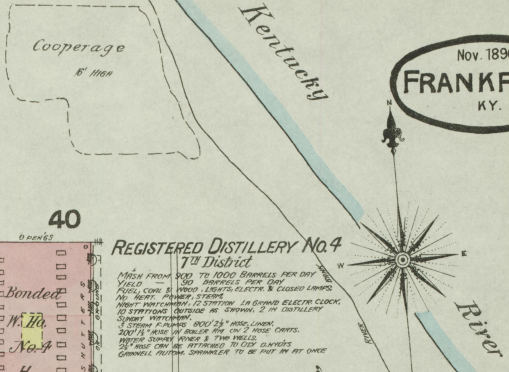
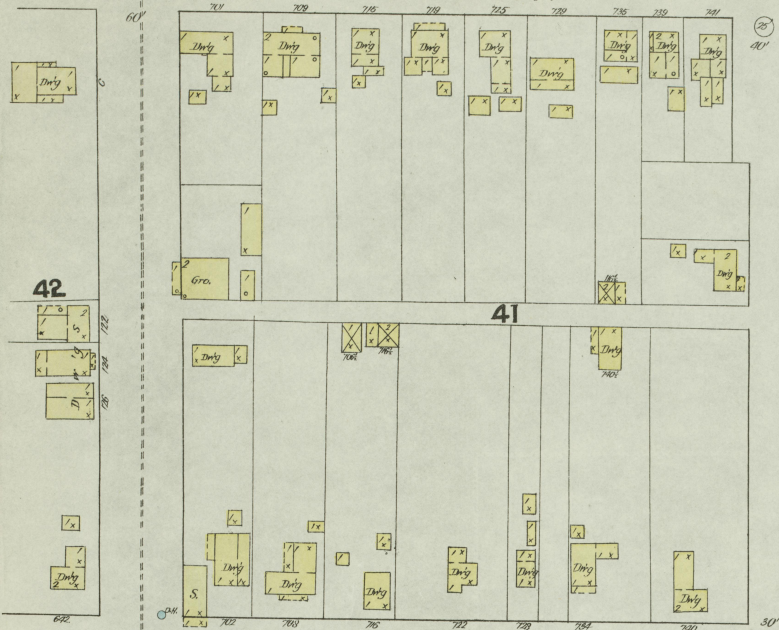


Carpenter

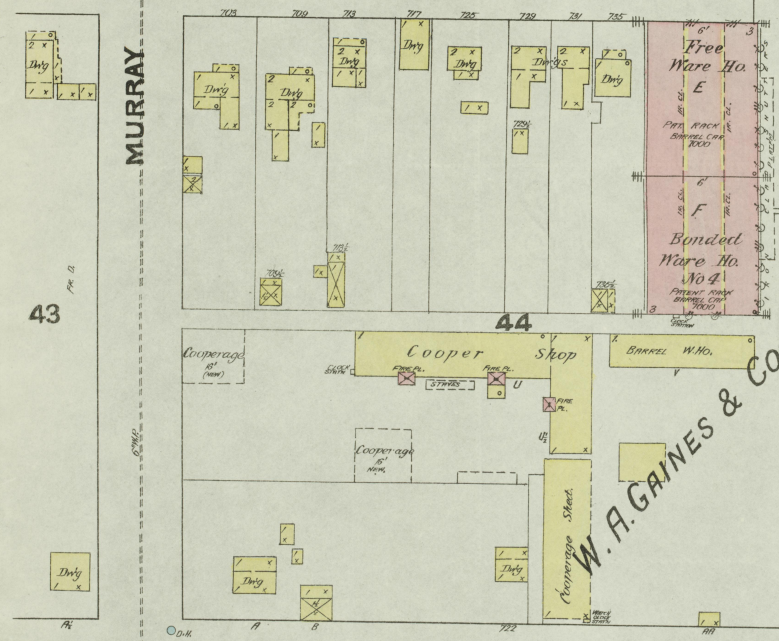
No exposure.



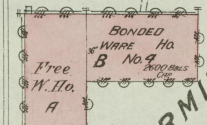
SEE SHEET No. 11
2ND ST.



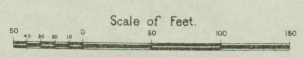
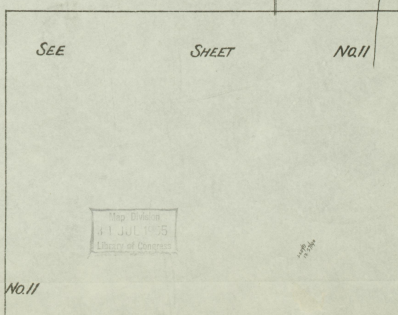
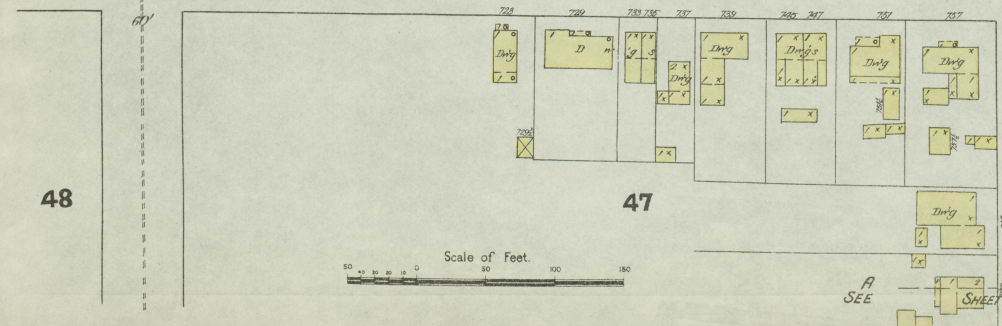
3RD ST.



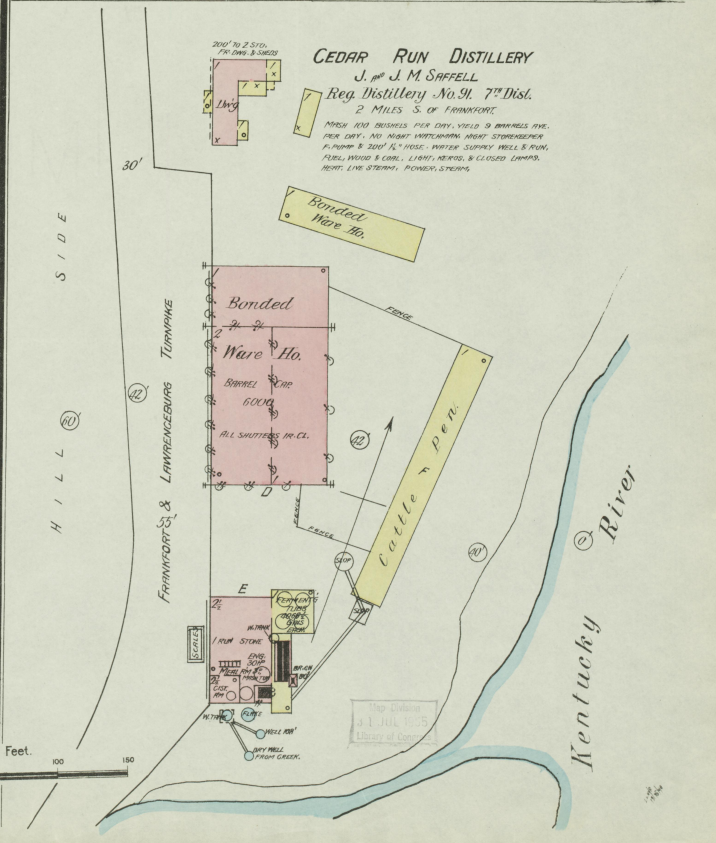
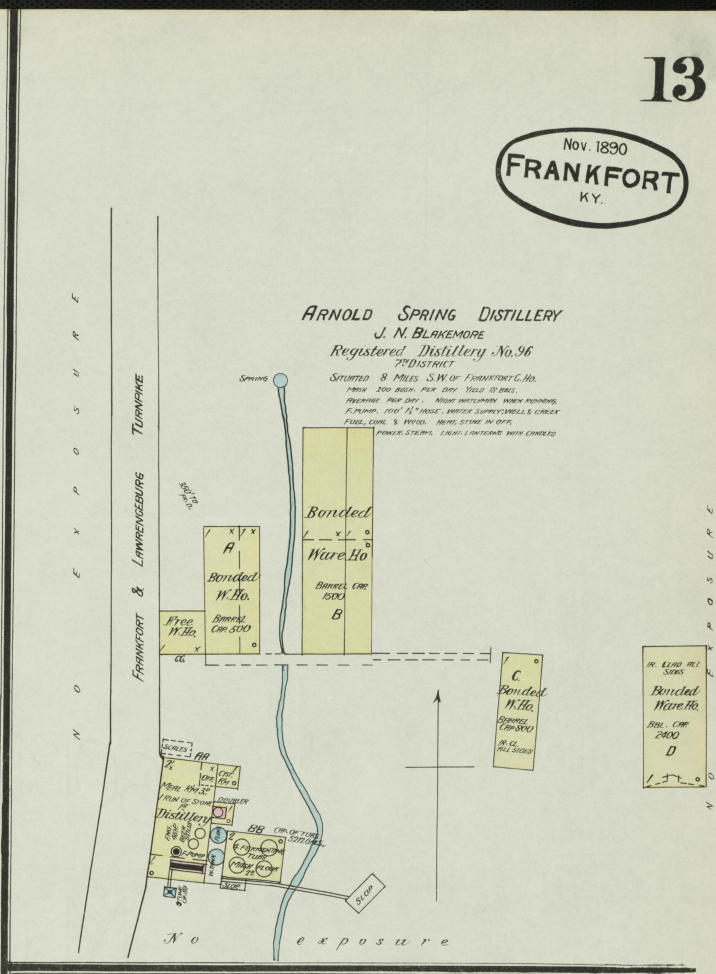
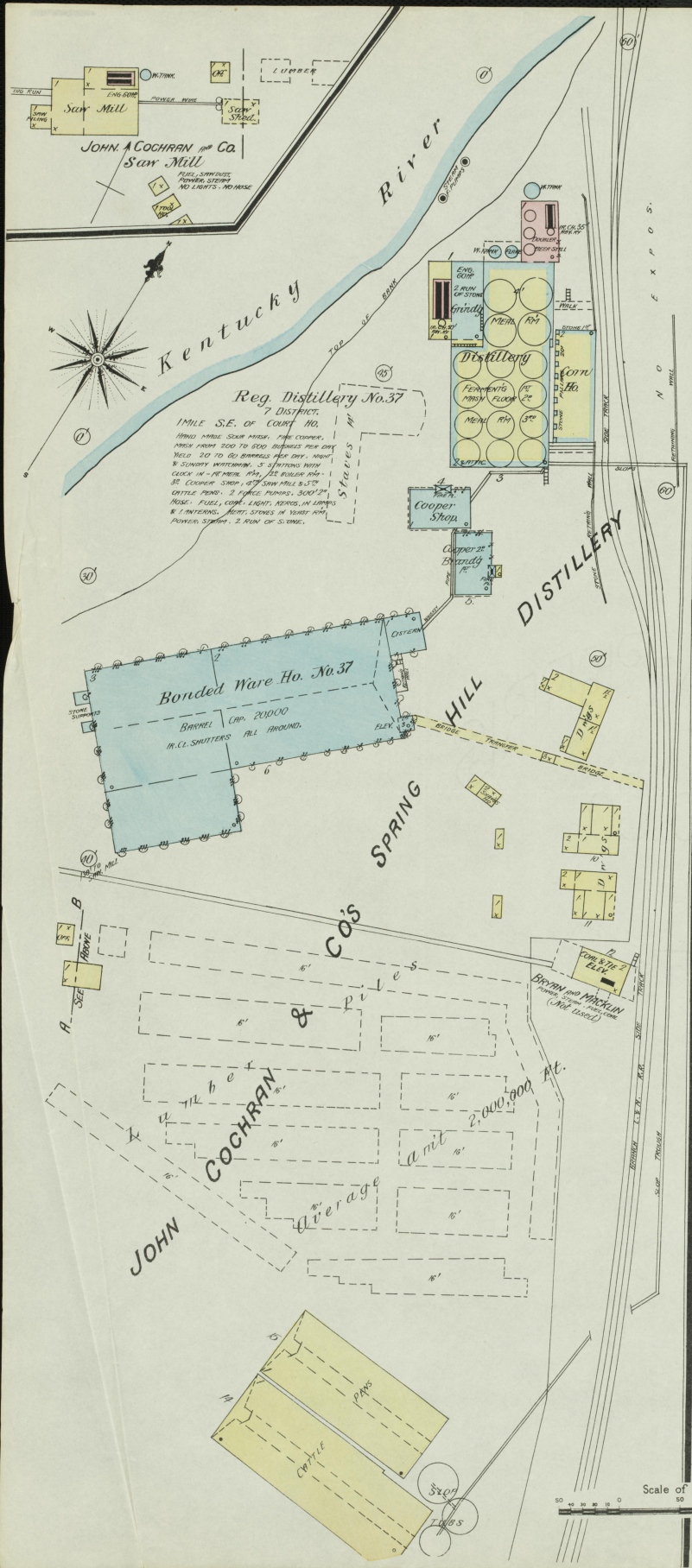
FOWLER

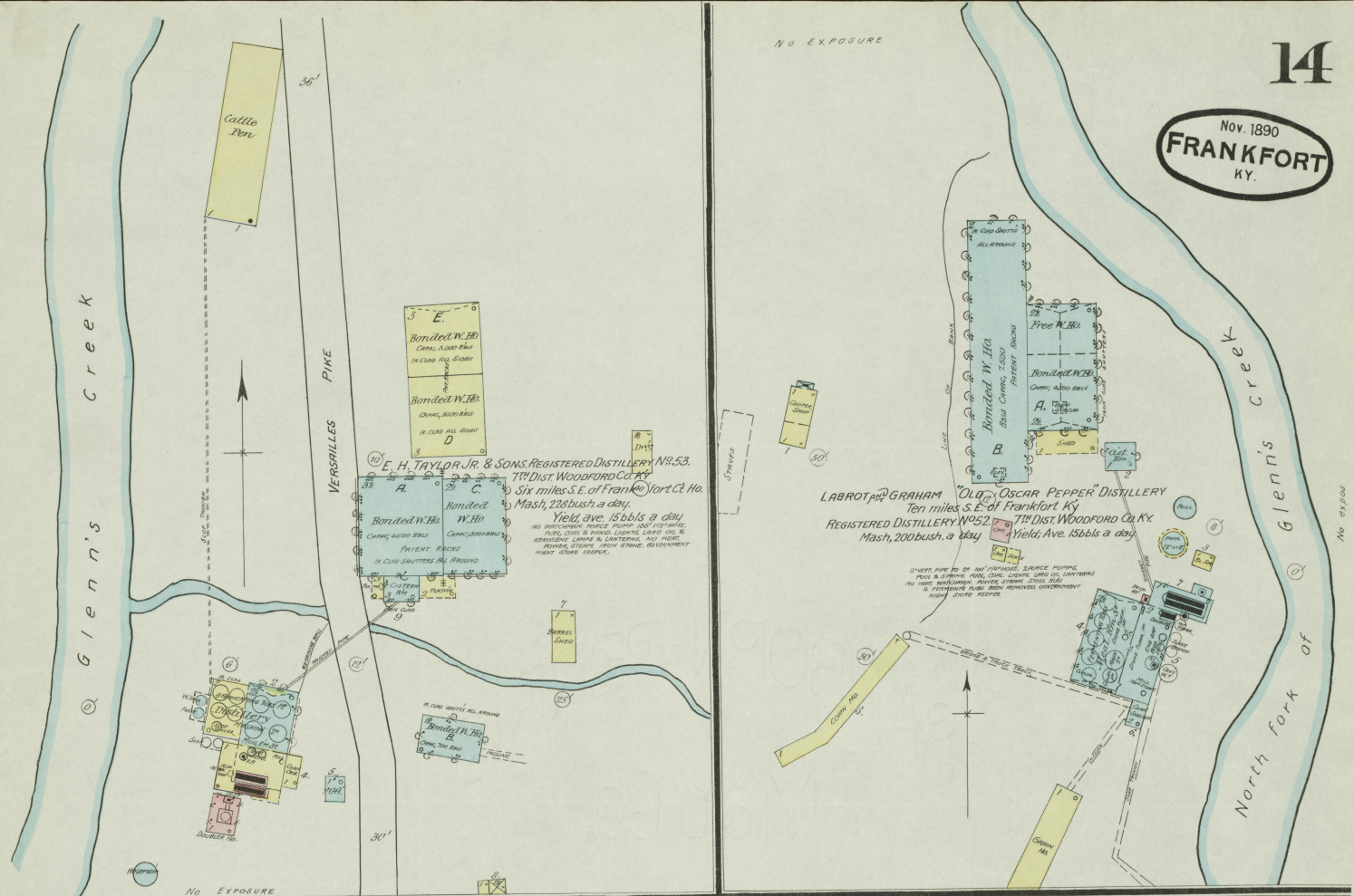


CROSS

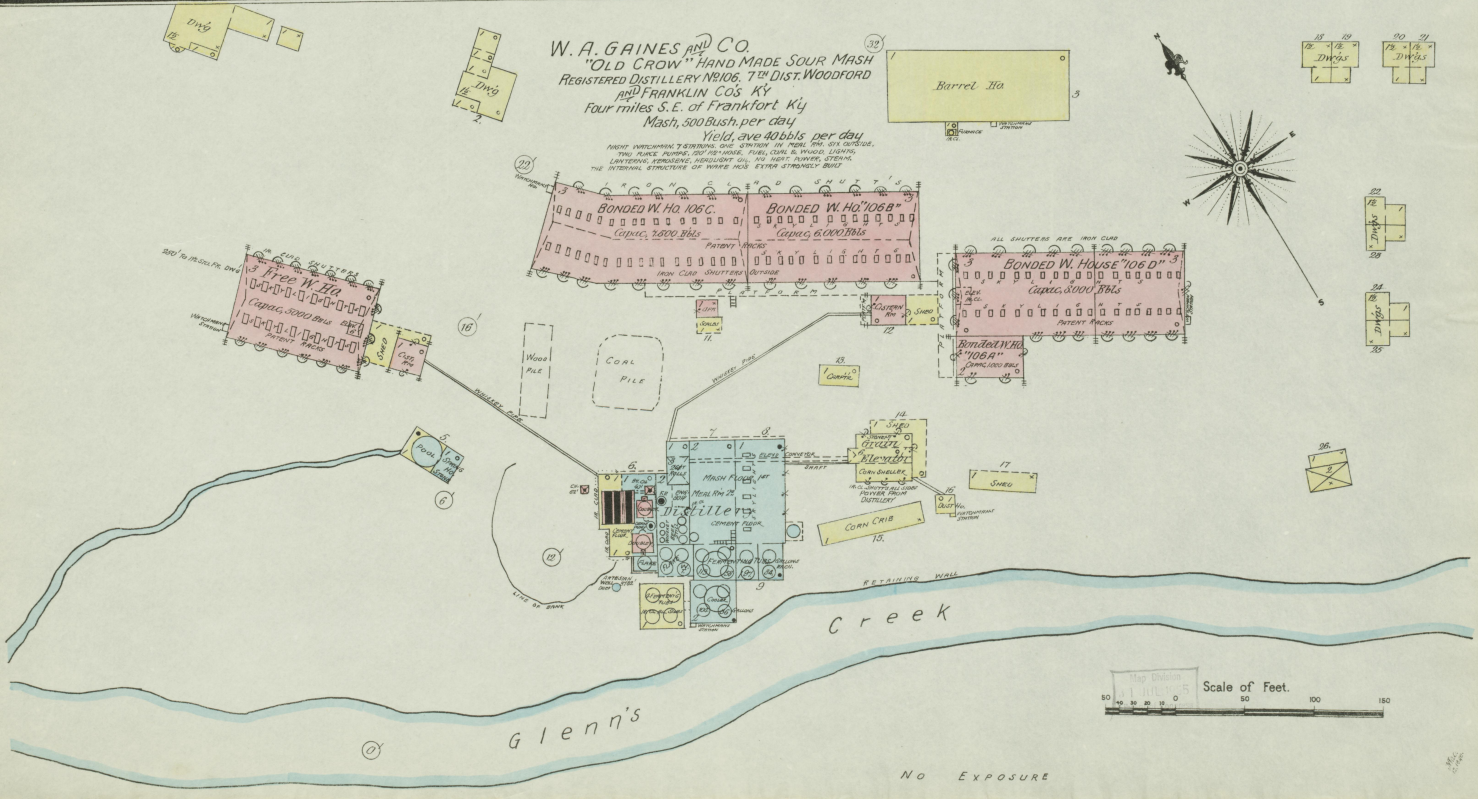


Map drawn
11 JUL 1895
E. J. DAVIS

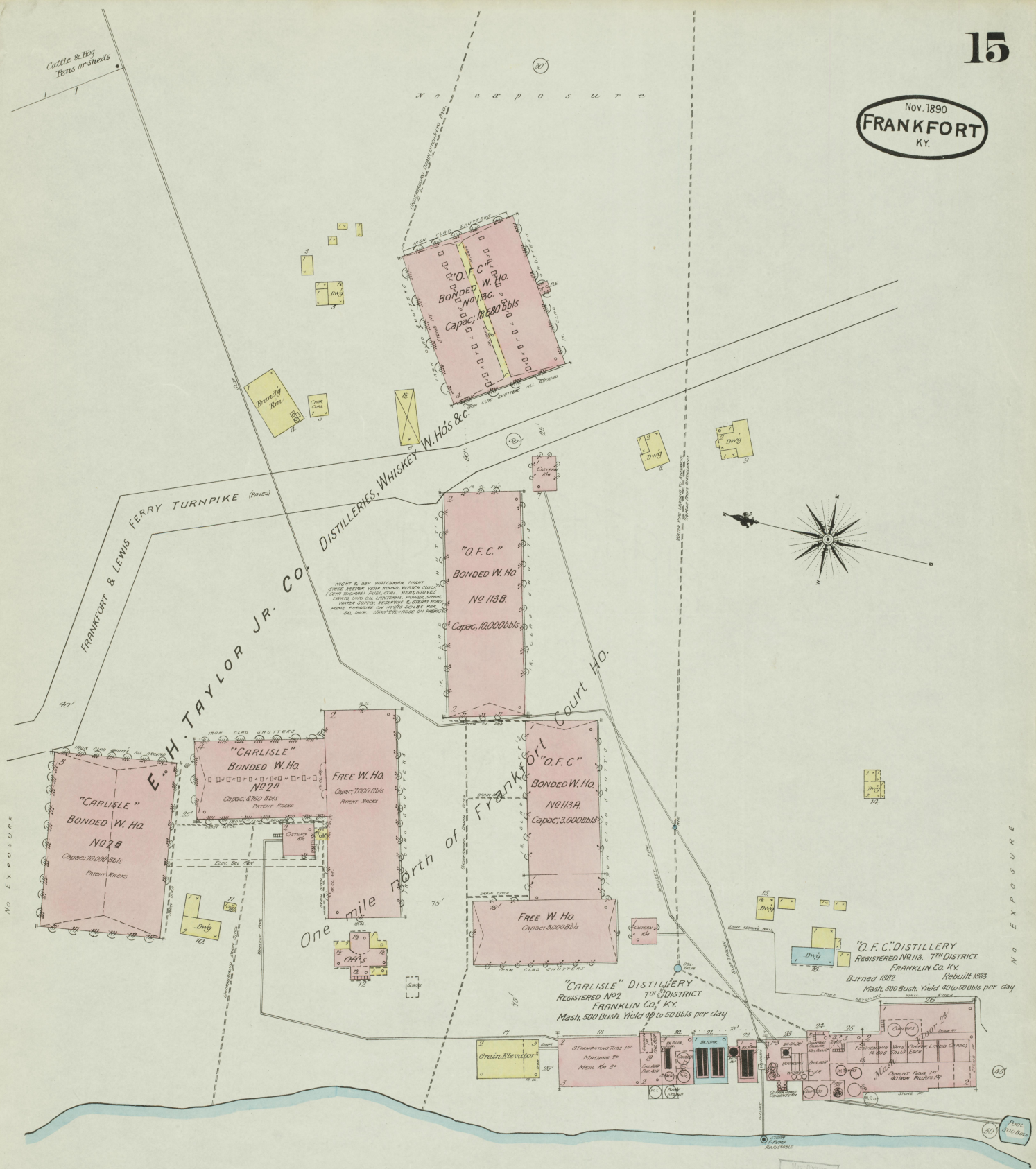




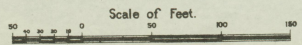
W. A. GAINES AND CO.
"OLD CROW" HAND MADE SOUR MASH
 REGISTERED DISTILLERY NR. 60, 7th DIST. WOODFORD
 CO. KY.
 Four miles S.E. of Frankfort Ky.
 Mash, 500 bush. per day.
 Yield, ave 40 bbls. per day.

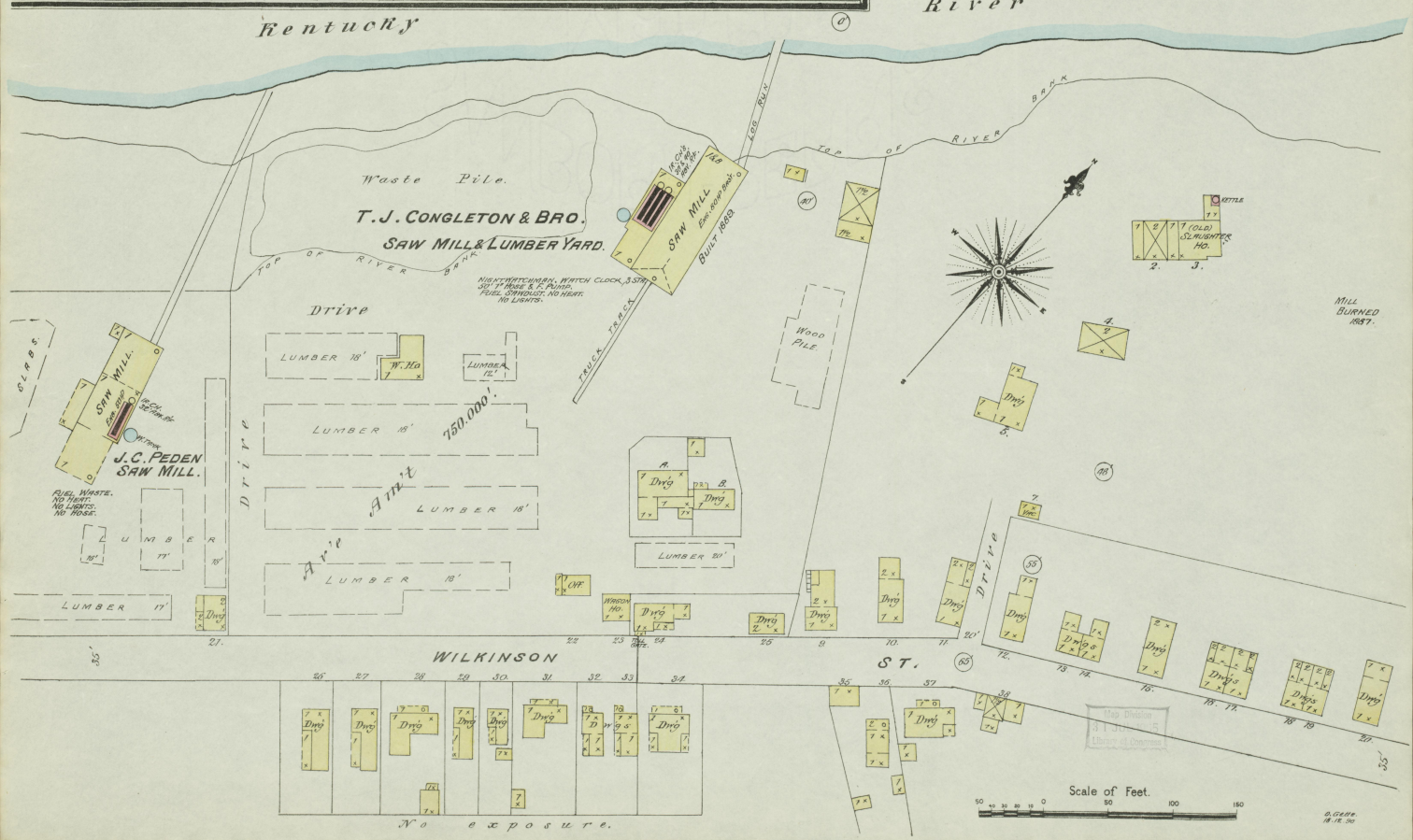
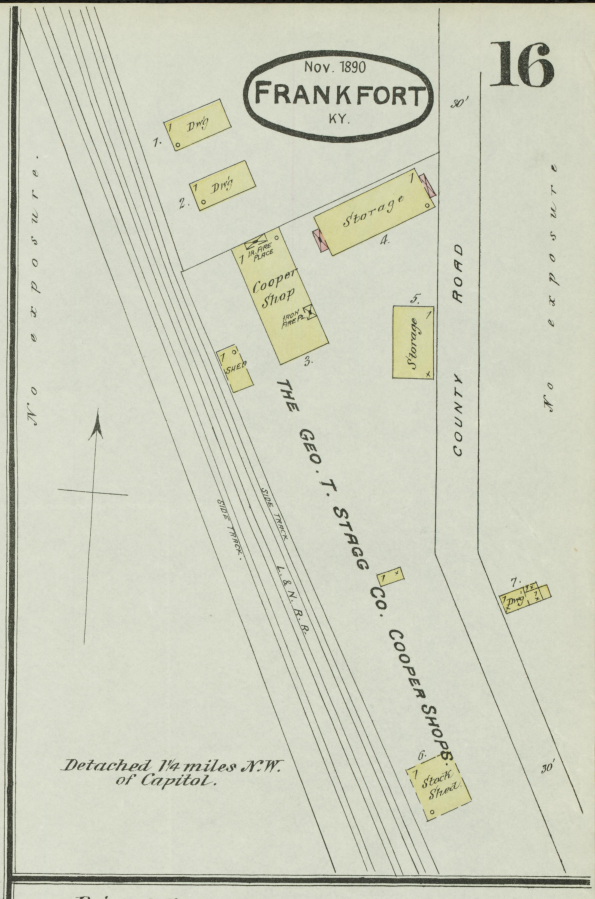
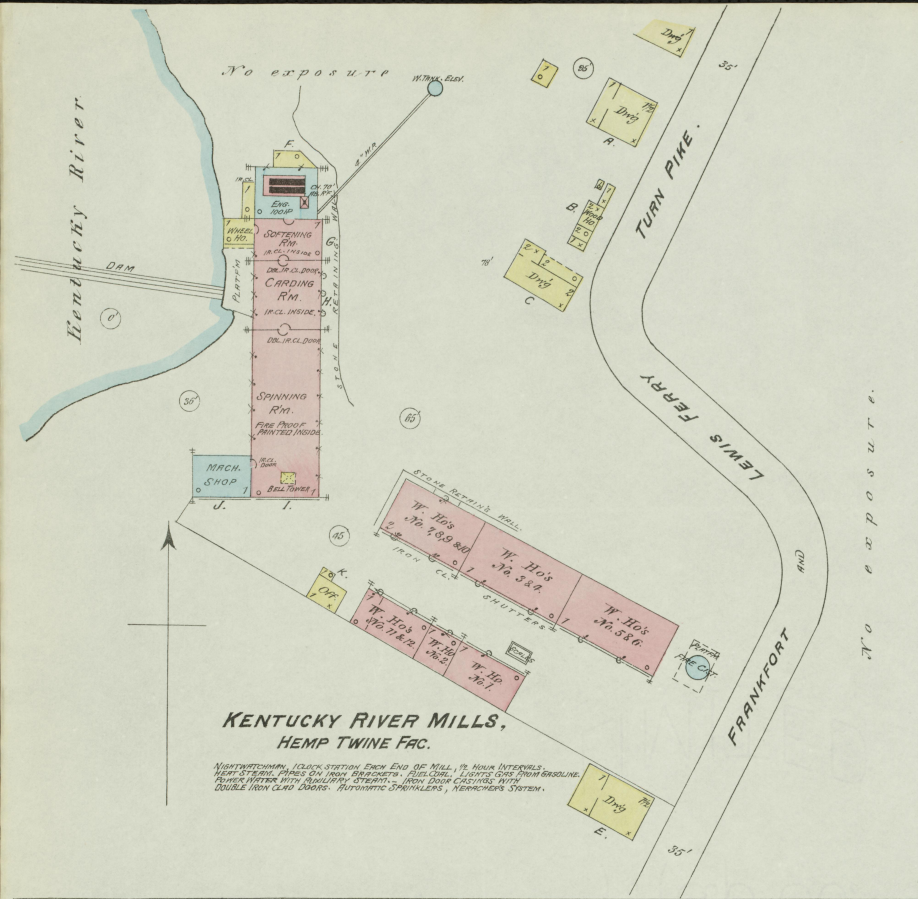


Nov. 1890
FRANKFORT
KY.



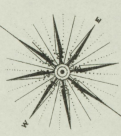
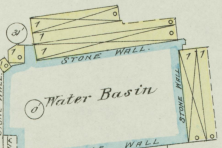
Kentucky River



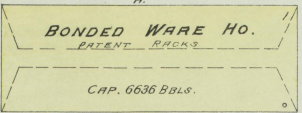


Nov. 1890
FRANKFORT
KY.

NORTH ELKHORN TRAINING STABLES.
CHURCH BROS PROPRIETORS



No exposure

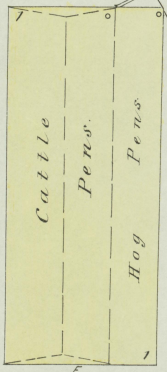
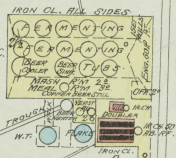


W. B. SAFFELL,
REGISTERED DISTILLERY
No. 123, 8TH DISTRICT
ANDERSON CO. KY.

NOTE: WATCHMAN WHEN RUNNING
MASH SHUT OFF VALVE ATTACHED
TO STEAM PIPE - FUEL COKE & WOOD
HEAVY SYSTEM IN DEF. LIGHTS, LAMP, &
WREN, WHEN NECESSARY.
MASH CAP. 528 BUSH. PER DAY.

11 Miles S.W. of Frankfort.

COUNTY



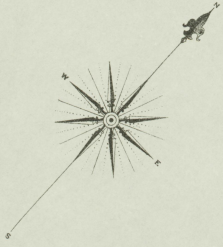
ROAD

L.S.R.P.
TRESTLE

Hammond
Creek

No exposure

No exposure



Scale of Feet.
0 50 100 150

A 1/2

A 1/3

HOLMES

