

VOLUME XXIII

Gray, Helm, Reuter, Smathers Are

971 VOTES CAST BY STUDENT BODY DURING ELECTION

Returns Compiled Show Less Interest in Class Elections

U. K. MEN'S COUNCIL DIRECTS TABULATION

Indications Show That Poll Is Most Clean and Fair in Years

Election returns compiled early last night indicated 971 students had cast ballots during class elections conducted Thursday.

Class presidents selected Thursday are Russell Gray, Schenectady, N. Y., Triangles, senior, college of Engineering; Horace Helm, Henderson, Sigma Alpha Epsilon, junior, college of Engineering; and Reuter, Louisville, Alpha Sigma Phi, sophomore, college of Engineering.

Forward Smathers, sociology, Sigma Chi pledge, freshman, college of Arts and Sciences.

Voting was carried on between the hours of 9 a. m. and 12 noon, 1 p. m. until 4 p. m. Ballots were required to enter the polling room by the west door and leave by the east.

Although election officials discovered a few students attempting to "stuff" the ballot boxes, only a slight discrepancy was noted in the final tabulations.

Ballots credited totaled 971. Approximately 20 votes were discarded in the final count for voters' failures to sign their names.

During the polling hours in White hall, election officers kept a close watch on the ballot boxes. During the noon interim the boxes were locked in the office of the Dean of Men.

After the final count and check-up had been completed, council members indicated that Thursday's elections were probably as fair and as clean as any ever held at the university.

Kampus Kernels

There will be an important meeting of the Women's Athletic Council at 4 p. m. Monday in the office of Miss Beverly Wynn.

Get Your Kat Early The Kampus Kat will make its first appearance of the school year at the Alabama game Saturday.

The Kampus Kat will be a limited number printed, it will be well for anyone who wants one to get it early.

There will be a meeting of Mortar Board in Patterson hall, 4:30 p. m. Monday.

Alpha Zeta, honorary agriculture fraternity, will give a smoker for the faculty and the freshmen of the College of Agriculture, 7:30 p. m. Tuesday, November 1, at the Dairy building.

There will be a meeting of Mortar Board in Patterson hall, 4:30 p. m. Monday.

Freshman Caps Are at Thorpe's

November 1 Set By Council as Date When All Frosh Must Have Pots

Freshman caps have arrived and may be obtained at Thorpe's Clothing store for 33 cents, according to an announcement issued yesterday by John Ewing, president of the Men's Student Council.

All freshmen will be required to have the headgear by November 1, it was stated in a ruling made by the council who is in charge of the distribution of the caps.

TEN ARE PLEDGED TO HONOR GROUP

Seven Seniors, Three Juniors Accept Bids of Tau Beta Pi Honorary

Tau Beta Pi, honorary engineering fraternity, held their regular semi-annual pledging exercises at the assembly of engineers in Memorial hall at 10 a. m. Wednesday.

The program was opened with an organ prelude played by Edward Barlow, senior engineer, after which John Kang gave a short talk concerning the organization, its history, purpose, and prospects for the future.

William Bounding Cundiff, sophomore engineer, was then presented a slide rule by the organization for having attained the highest scholastic standing as a freshman in the College of Engineering last year.

The following seniors were then pledged to the organization: W. F. Davis, Owensboro; J. Isaacs, Bushel; I. N. Brown, McAfee; W. Cowley, Fort Knox; L. C. Anderson, Va.; A. S. Ammerman, Lexington; R. Gray, Saratoga, New York.

Three juniors pledged at the meeting were: E. W. Combs, Louisville, scholastic standing of 2.62; H. Greenup, Frankfort, standing, 2.76; and W. Steffler, Owensboro, standing, 2.76.

Tau Beta Pi was founded at Lehigh University in 1885, and was the first honorary organization based on scholarship.

SuKy Will Culminate Jinx Services at Rally

Luicy Jean Anderson, Zeta Tau Alpha, and J. D. Haggard, Kappa Alpha, were selected as additions to the cheering team, by SuKy circle at a meeting Tuesday afternoon.

The committee which is in charge of the pep rally, the voodoo with doctors and the mournful processions which have been wending their way through the campus this past week, will be culminated in a brilliant pep rally, tonight at 8:15 o'clock.

After the pep rally, the Strand theater is offering a free show to the university students.

The contest will be held at 8:15 o'clock, after 9:30 upon showing his ticket book at the door.

The contest will be held at 8:15 o'clock, after 9:30 upon showing his ticket book at the door.

SuKy cups will be offered again this year with the present team for the campus which will erect the

Child Welfare Group to Hear Dr. H. Barnard

Five Seniors, One Junior Accepted Honor Proffered by Leadership Group

O. D. K. PLEDGES SIX AT MEETING HELD YESTERDAY

Smallest Group Pledged in Several Years; All Are Active Campus Leaders

Howard Baker, Marvin Wachs, Gilbert Kingsbury, O. B. Coffman, James E. Schaefer and Gordon E. Burns were pledged to Omicron Delta Kappa, national honorary campus leaders fraternity, pledging took place in the assembly room of the commerce college yesterday.

The announcement was made for the student body by means of a large O. D. K. key placed in the front of the administration building.

Marvin Wachs, Covington, is a senior in the College of Arts and Sciences. It is a member of Phi Kappa Tau social fraternity and is managing editor of The Kernel.

Gordon Burns, Schenectady, New York, is a member of Alpha Sigma Phi, national honorary campus leaders fraternity, and is president of the men's Pan-Hellenic council, departmental editor of the Kentuckian, and is representative of the university Pan-Hellenic council.

James E. Schaefer, is a member of Phi Kappa Tau social fraternity and is an associate editor of the Kampus Kat, student newspaper of the university.

Marvin Wachs, Covington, is a senior in the College of Arts and Sciences. It is a member of Phi Kappa Tau social fraternity and is managing editor of The Kernel.

Gordon Burns, Schenectady, New York, is a member of Alpha Sigma Phi, national honorary campus leaders fraternity, and is president of the men's Pan-Hellenic council, departmental editor of the Kentuckian, and is representative of the university Pan-Hellenic council.

James E. Schaefer, is a member of Phi Kappa Tau social fraternity and is an associate editor of the Kampus Kat, student newspaper of the university.

Y. W. C. A. DRIVE IS SUCCESSFUL

Figures Are Not Yet Available on Membership-Finance Campaign as Committee Begins Eleventh Day

Under the direction of Alice Lane, finance chairman for the Y. W. C. A., the annual campus-wide membership-finance drive of the student Y. W. C. A. today begins its eleventh day.

The drive was inaugurated immediately following the women's meeting October 18, in Memorial hall, and will continue through the first ten days of the drive.

The drive was inaugurated immediately following the women's meeting October 18, in Memorial hall, and will continue through the first ten days of the drive.

The drive was inaugurated immediately following the women's meeting October 18, in Memorial hall, and will continue through the first ten days of the drive.

The drive was inaugurated immediately following the women's meeting October 18, in Memorial hall, and will continue through the first ten days of the drive.

The drive was inaugurated immediately following the women's meeting October 18, in Memorial hall, and will continue through the first ten days of the drive.

Wildcats Hope To Break Spell Of Tidemen's Nine-Year Jinx

Hoover's Plurality In Straw Vote Is 10,468

Herbert Hoover polling 28,180 votes, a plurality of 10,468 won the first national intercollegiate straw vote. Gov. Franklin D. Roosevelt captured second place by polling 17,712 votes.

The collegiate poll reflected accurately the past balloting of various national members of the inter-college were included to give the Democratic candidate a majority of ballots cast within the inter-college schools voted approval of the present Republican administration.

The surprise of the entire poll was the vote of Norman Thomas the Socialist candidate who received 10,468 votes.

The poll was the first national collegiate canvass of any consequence. It was conducted by the Daily Princetonian, daily newspaper of Princeton University, and 35 colleges and universities through out the entire country.

The poll was the first national collegiate canvass of any consequence. It was conducted by the Daily Princetonian, daily newspaper of Princeton University, and 35 colleges and universities through out the entire country.

Soft Drink Sales Are Taboo at Games

Danger of Broken Bottles Cited as Cause; Will Continue to Sell Candy

No more soft drinks will be sold in the stadium during football games. This was announced yesterday by the athletic committee.

Drinks will be sold at the stand on the south side of the field, and various other small stands will be established beneath both sides of the stadium and at each end of the field.

Drinks will be sold at the stand on the south side of the field, and various other small stands will be established beneath both sides of the stadium and at each end of the field.

English Club Has First Meeting

The English club held its first meeting of the semester Tuesday, October 25 in McVey hall.

The English club held its first meeting of the semester Tuesday, October 25 in McVey hall.

The English club held its first meeting of the semester Tuesday, October 25 in McVey hall.

The English club held its first meeting of the semester Tuesday, October 25 in McVey hall.

The English club held its first meeting of the semester Tuesday, October 25 in McVey hall.

The English club held its first meeting of the semester Tuesday, October 25 in McVey hall.

The English club held its first meeting of the semester Tuesday, October 25 in McVey hall.

Football Team To Sponsor Hop

Dance Will Be Held in Alumni Gymnasium Saturday Night From 9 to 12 P. M.

Following the Kentucky-Alabama football game Saturday afternoon on Stoll field, members of the university varsity football team will stage a dance from 9 to 12 p. m. in the Alumni gymnasium.

Following the Kentucky-Alabama football game Saturday afternoon on Stoll field, members of the university varsity football team will stage a dance from 9 to 12 p. m. in the Alumni gymnasium.

Following the Kentucky-Alabama football game Saturday afternoon on Stoll field, members of the university varsity football team will stage a dance from 9 to 12 p. m. in the Alumni gymnasium.

Following the Kentucky-Alabama football game Saturday afternoon on Stoll field, members of the university varsity football team will stage a dance from 9 to 12 p. m. in the Alumni gymnasium.

Following the Kentucky-Alabama football game Saturday afternoon on Stoll field, members of the university varsity football team will stage a dance from 9 to 12 p. m. in the Alumni gymnasium.

LITERARY GROUP 'IOLDS PLEDGING

Exercises, Dinner Held at Green Tree Terminal; Six Accept Honor From Chi Delta Phi

Chi Delta Phi, national honorary literary sorority, held its annual pledging dinner at the Green Tree room at 6:30 Wednesday afternoon.

Chi Delta Phi, national honorary literary sorority, held its annual pledging dinner at the Green Tree room at 6:30 Wednesday afternoon.

Chi Delta Phi, national honorary literary sorority, held its annual pledging dinner at the Green Tree room at 6:30 Wednesday afternoon.

University Student Expires in Hospital

Robert Tupman, 18 years of age, freshman in the College of Engineering, died at the Good Samaritan hospital Wednesday afternoon, 11 days after undergoing an operation there for appendicitis.

Robert Tupman, 18 years of age, freshman in the College of Engineering, died at the Good Samaritan hospital Wednesday afternoon, 11 days after undergoing an operation there for appendicitis.

Robert Tupman, 18 years of age, freshman in the College of Engineering, died at the Good Samaritan hospital Wednesday afternoon, 11 days after undergoing an operation there for appendicitis.

Robert Tupman, 18 years of age, freshman in the College of Engineering, died at the Good Samaritan hospital Wednesday afternoon, 11 days after undergoing an operation there for appendicitis.

Robert Tupman, 18 years of age, freshman in the College of Engineering, died at the Good Samaritan hospital Wednesday afternoon, 11 days after undergoing an operation there for appendicitis.

Robert Tupman, 18 years of age, freshman in the College of Engineering, died at the Good Samaritan hospital Wednesday afternoon, 11 days after undergoing an operation there for appendicitis.

Robert Tupman, 18 years of age, freshman in the College of Engineering, died at the Good Samaritan hospital Wednesday afternoon, 11 days after undergoing an operation there for appendicitis.

Each Team Has Full Personnel Ready For Fray

Game Will Start at 2:30 P. M. Saturday On Stoll Field

Alabama's Crimson Tide, surging at full flood, will meet the Wildcats tomorrow afternoon at 2 o'clock on Stoll field in one of the most important gridiron battles in the Southern conference.

Alabama's Crimson Tide, surging at full flood, will meet the Wildcats tomorrow afternoon at 2 o'clock on Stoll field in one of the most important gridiron battles in the Southern conference.

Alabama's Crimson Tide, surging at full flood, will meet the Wildcats tomorrow afternoon at 2 o'clock on Stoll field in one of the most important gridiron battles in the Southern conference.

Alabama's Crimson Tide, surging at full flood, will meet the Wildcats tomorrow afternoon at 2 o'clock on Stoll field in one of the most important gridiron battles in the Southern conference.

Alabama's Crimson Tide, surging at full flood, will meet the Wildcats tomorrow afternoon at 2 o'clock on Stoll field in one of the most important gridiron battles in the Southern conference.

Eight Musicales On Philharmonic List for Year

Orchestra Will Broadcast Over WHAS Extension Studio 4 Times

The University of Kentucky Philharmonic orchestra is enjoying one of the most brilliant years of its career. There are now 45 members in the organization under the direction of Prof. Carl Lampert, head of the music department.

The University of Kentucky Philharmonic orchestra is enjoying one of the most brilliant years of its career. There are now 45 members in the organization under the direction of Prof. Carl Lampert, head of the music department.

The University of Kentucky Philharmonic orchestra is enjoying one of the most brilliant years of its career. There are now 45 members in the organization under the direction of Prof. Carl Lampert, head of the music department.

The University of Kentucky Philharmonic orchestra is enjoying one of the most brilliant years of its career. There are now 45 members in the organization under the direction of Prof. Carl Lampert, head of the music department.

The University of Kentucky Philharmonic orchestra is enjoying one of the most brilliant years of its career. There are now 45 members in the organization under the direction of Prof. Carl Lampert, head of the music department.

The University of Kentucky Philharmonic orchestra is enjoying one of the most brilliant years of its career. There are now 45 members in the organization under the direction of Prof. Carl Lampert, head of the music department.

The University of Kentucky Philharmonic orchestra is enjoying one of the most brilliant years of its career. There are now 45 members in the organization under the direction of Prof. Carl Lampert, head of the music department.

The University of Kentucky Philharmonic orchestra is enjoying one of the most brilliant years of its career. There are now 45 members in the organization under the direction of Prof. Carl Lampert, head of the music department.

The University of Kentucky Philharmonic orchestra is enjoying one of the most brilliant years of its career. There are now 45 members in the organization under the direction of Prof. Carl Lampert, head of the music department.

The University of Kentucky Philharmonic orchestra is enjoying one of the most brilliant years of its career. There are now 45 members in the organization under the direction of Prof. Carl Lampert, head of the music department.

The Kentucky Kernel

Member National College Press Association Kentucky Intercollegiate Press Association Lexington Board of Commerce Official Newspaper of the Students of the University of Kentucky, Lexington

HERE SHALL THE KERNEL ALL STUDENT RIGHTS MAINTAIN

LAWRENCE A. HERRON, Editor-in-Chief MARVIN G. WACHS, Managing Editor

ASSOCIATE EDITORS James Minter, Mary Jo LaFerty, Joe S. Reister

ASSISTANT EDITORS Fred Rhiles, Bill Warren, Virginia Lee Moore

ELIZABETH HARDIN, Society Editor Jane Ann Matthews, Assist. Society Editor

JOHNIE CRADDOCK, Art Editor JOAN CARICAN, Staff Editor JAMES W. CURTIS, Literary Editor

SPECIAL WRITERS Ray Stark, Howard L. Cleveland

ASSISTANT NEWS EDITORS Mary Carolyn Terrell, J. D. Palmer Robert H. McCaughey

REPORTERS Jack Wild, Fred Adams, Ben Taylor Myrtle Pelt, Frank Adams, Jack Quinn

SPORTS WRITERS Henry C. McCown, Stanley Trickett Gene Lucas, Joe Quinn Edward Waite

COLLEMAN R. SMITH, Business Manager BUSINESS STAFF Dave Dillard

ADVERTISING STAFF William Carney, Robert Hall

CAMERON COFFMAN, Circulation Manager

FIT SUBJECTS FOR PUNISHMENT

Signs, placards, and handbills advertising Thursday class elections made an appearance early this week throughout the campus. Today, a good 12 hours after the elections have been decided, they remain in view.

Scattered in glaring and tawdry confusion with total disregard for appropriateness of background or location, these gaudy political advertisements have been tacked or pasted to bulletin boards, trees, refuse cans, traffic signs, windows, buildings—in fact, anywhere the overzealous propagandists wished to place them.

The issue involved is not whether political advertising during class elections is permissible. Such advertising, if properly handled, is most expedient in heightening interest in the campaign.

The perpetrators of the existing campus billing should be brought under the immediate jurisdiction of the two student governing bodies, the Men's Student Council and the Women's Self-Governing Association.

KAMPUS KAT Campus Kat, university humor publication, will make its initial appearance this week, Saturday at the Kentucky-Alabama football game.

similar to that first used last year when the publishers discontinued its newspaper makeup and innovated the magazine form.

Previous issues of the comic publication were devoted, for the larger part, to humorous references of a local nature.

Jest Among Us

Some persons fish with flies; others eat, camp, and sleep with them. And then there was the copy reader who discovered a typographical error in his alphabet vegetable soup.

Communications

SUKY WELCOMES "RUSH" PREVENTATIVE SUGGESTIONS (To the Editor of The Kernel) Dear Sir: The last issue of The Kernel carried an editorial discussing the problem of theater rushing.

As you say, something must be done. The circle would be glad to hear any student having a solution for this difficulty.

W. S. G. A. WILL MEET Members of W. S. G. A. will meet at 3 p. m. Monday in the Reading room at Boyd hall.

BURTON'S LUNCHEONS 25c—DINNERS 35c PARTY CATERING OUR SPECIALTY Rose and High

ALL MAKES OF TYPEWRITERS

Special Rental Rates to Students STANDARD TYPEWRITER CO. Opp. Courthouse WEST SHORT ST. Ash. 1792

PATRONAGE RESPECTFULLY SOLICITED FOUNTAIN PENS & PENCILS, INK & STATIONERY

Bring Us Your Prescriptions LUNCHEONETTE PHOENIX DRUG CO., Inc. 102 E. Main St.—Lexington, Ky.

DOTES AND ANTI-DOTES

By LAWRENCE HERRON

And now, my dear public, as no "Dotes and Anti-dotes" suggestions have flooded the office since Tuesday, we'll have to continue our dusty walk together.

Among presidential ballots cast by our said and dignified faculty: One vote for Sophie Glutz, one vote for "Rudy," by Tillie the Toler, and one addendum: "Hay—this is a Straw Vote!"

Supported by Kahpas, Delaws, Pyscops, Alfagams, Zetaws, Alfafaws, Kadles, and Fydells—Zetaw Horace Miner, president; Kahpa Mary King Montgomery, vice-president; Zetaw Mary Elizabeth Price, secretary; Alfataw Jess Herndon, treasurer; Juniors: Pyscap Tom Cassidy, president; Alfagamarow Smith Broadbent, vice-president; Fydell Miles Davis, secretary-treasurer; Sophomores: Fydell Phil Ardery, president; Zetaw Catherine Cook, vice-president; Kadie Elizabeth Jones, secretary-treasurer; Freshmen: William Daniel, president; Kadie Margaret Greenhouse, vice-president; Kahpa Mary Dantzer, secretary-treasurer.

Supported by Independents—Sens: Aggie Sale, president; Elise Buren, vice-president; Javis O'Brien, secretary; James Miner, treasurer; Juniors: Joe Reister, president; Bill Davis, secretary-treasurer; Sophomores: David Lawrence, president; Anna Gordon, vice-president; Bill Davis, secretary-treasurer; Freshmen: no candidates.

Supported by Alfafags, Chios, Kapsigs, Sigafis, Fyefaws, Lamadawes, Trevels, Slickyes, and Alfafams—Seniors: Triangle Russell Gray, president; Alfagam Neill Dishman, vice-president; Chio Jane Glavan, secretary; Kapsig Charlton Wallace, treasurer; Juniors: Sigaf Horace Helm, president; Fyefaw Howard Kreuter, vice-president; Lamadawey Ralph Edwards, secretary-treasurer; Sophomores: Alfafag Oscar Renter, president; Trevel Louise Johnson, vice-president; Independent Bill Wilson, secretary-treasurer; Freshmen: Siskye Howard Smithers, president; Chio Stevenson, vice-president; Kapsig Sam Warren, secretary-treasurer.

And Sigaf Horace Helm, candidate for Ignor president, ran for the editorship of the 1932 Kentuckian last spring. Must want another shot at the job.

Law college seniors are inaugurating a tradition Saturday... will meet at the Hurdin and go in body to the 'Cat-Tide contest... will all carry cans.

Typewriter clicks: Freshman with a rust mark running down each side of his face was noticed staggering from the Pat hall vicinity... said window bars were spaced too closely for successful courtship.

Very truly yours, GIL KINGSBURY, President.

Viaduct Pharmacy Ash. 4779 Ash. 9154 Phone us for quick delivery on sandwiches and drinks. Also complete drug store service.

CID the CYNIC

Two heads outdo the worth of one In almost every rating. And with this adage I'll agree—Especially when I'm dating.

gentlemen reside nearby, Alex's Grill is doing a high-powered morning business, mostly ettes. Someone says that I was wrong about there being more votes cast in junior prom queen balloting than there were juniors...

NO JUDGING TEAM Assistant Dean L. J. Horlacher of the College of Agriculture announced that there will be no judging team this year because of lack of funds.

CURB SERVICE "DINE AND DANCE AND CHASE THE BLUES AWAY" at ROSEMONT GARDEN INN "Come Out and Get Acquainted with Jean" 204 ROSEMONT GARDEN TEL. ASH. 9269

ROAMIN' THE RIALTO

Once in a lifetime grotesquerie like Hollywood happens, an exaggerated exception to every main-made rule, and Broadway pauses to enjoy a good laugh at its expense with that happy satire "Once In A Lifetime."

When Director Fowler announced, in his opening night speech, that Guignol, ignoring depression, would present, not five, but seven plays during the season, we lifted a doubtful eyebrow.

Who killed Jenny Wren? It might have been Ricardo Cortez, as house thief turned detective, or Pauline Frederick as the proud and haughty dowager, or any one of eleven others in a weird house party who equally merited suspicion...

unravels the mystery in "The Phantom of Crestwood," starting Sunday at the Ben Al.

Harold Lloyd returns to the screen after an absence of two years, in the Paramount comedy "Movie Crazy," Saturday at the Kentucky Theater.

Ruth Chatterton's second picture for First National is "The Crash," coming Saturday to the Strand.

THE MIND IMPRISONED The iron walls Rise before me, Grim, Severe, Cold. With relentless arms They enfold me, Until I breathe no more, O, that I could escape them And soar to unknown heights, To grasp the unattainable, To conquer the gnomes of the night, Those forbidding, sneering creatures.

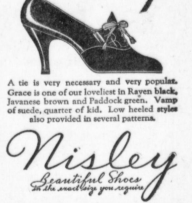
To U. K. Co-Eds Extend a Cordial Invitation to Visit Our Shop

Shampoo and Finger Wave 50c (as an introduction to our shop) Ask us about our free Shampoo and Finger Wave Permanent Wave Shop Licensed and Experienced Operators Only Ash. 5257 308 Hernando Bldg.

Who whisper in my ear, 'Ah, we are thy masters, Listen, can you hear? Quite unless it would be, Vain mortal that thou art, To fight against us three, Thou wert doomed from the start. Come Woe, follow Distrust And I, Doubt will lead thee, Against this hopeless soul We can surely win—we must.



Poise! You'll have a good foundation for perfect poise under all conditions if your shoes fit perfectly and are styled by the fashion authorities of the Nisley Style Bureau.



HERE are entirely different kinds of tobacco. Blend them and you get a different taste. Cross-Blend them and you get a better taste. While blending mixes the tobaccos together, Cross-Blending "welds" and "joins" their flavors into one.

Chesterfield CROSS-BLENDED for Milder Better Taste



SOCIETY

UNCERTAINTY Sometimes I'm certain only Of my own uncertainty! And so I pray the misty gods

MY BOY! I STARTED ON \$6. A WEEK!



BUT HOW DID YOU GET TO BE PRESIDENT?



ME? I EAT SHREDDED WHEAT!



YES, indeed, Shredded Wheat has been drowned in cream by some of the biggest business shots in this broad land! It has what they need... what you need! It's nature's own energy food, 100% whole wheat. Nothing is added... nothing taken away. Nature's full quota of energy-building elements is packed away in every golden-brown Shredded Wheat Biscuit... yours for the eating! Hop into the Shredded Wheat cheering section! Eat two biscuits a day for the next week! You'll feel bigger and better than ever.



When you see Niagara Falls on the package, you KNOW you have Shredded Wheat.

SHREDDED WHEAT NATIONAL BISCUIT COMPANY "Uneeda Bakers"

Tonite! "HAT CHECK GIRL" Plus "TRANSATLANTIC" Starts Saturday



On the Stage SINNETT On the Stage The Eminent Mind Reader Tuesday: ALL AMERICAN

That they be still Forging guides to me. —THOMAS EMMETT MOORE.

Mercer-Curtis The marriage of Miss Kitty Mercer, pledge of Delta Delta Delta, to Mr. Whitney Curtis, pledge of Sigma Thursday morning at the home of



the Rev. Pitzer. Those in attendance were Miss Anna Mae Lewis, Mr. Clyde Ruby, and Mr. J. C. Hulet.

Tea at Maxwell Place Mrs. Frank L. McVey entertained with her usual Wednesday afternoon tea this week, and had as special guests the members and new pledges of Tau Beta Pi, and members of the College of Engineering faculty. At five o'clock a meeting of Alma Mater was held there, with Drewella Steele presiding.

The following girls assisted with the serving of the guests: Misses Adele Headley, Elizabeth Hardin, Celeste Thompson, Lucy Guernant, Mary Lewis Shearer, Susan Herrington, Sally Johnston, June Winslow, Elizabeth Warren, Elizabeth Michler, Martha Lowry, Mary Clarke, and Elise Buresau.

Hallow'en Party Alpha Chi chapter of Zeta Tau Alpha will entertain from 8 to 11 o'clock Saturday night at the chapter house with a Hallow'en party.

The house will be decorated with the traditional Hallow'en decorations and will be furnished for dancing; and refreshments in the form of doughnuts, cider, and ginger ale will be served.

This afternoon Zeta Tau Alpha will hold open house for the members of the Delta Tau Delta fraternity. The Delta Chi fraternity was entertained last Friday.

Five new students at the university were dinner guests at the Zeta house Thursday evening.

Intramural

Out of a field of 77 entrants, 37 will start the annual cross-country race at 4 p. m. Friday, October 28. The race will start and finish on the north side of the stadium on Stoll field. Physical examinations and a weekly training schedule have cut the majority of contestants from the list of those eligible to compete. Although the field is small this year, the race will prove to be more than interesting because most of the participants are in good physical condition. The best times have been turned in so far are R. Vinson, 6:48; C. Holbrook, 6:55; and T. Hanna, 6:58. There will be seven teams and seven free lancers competing.

Volley ball, boxing, and wrestling entries are due October 28, 6 p. m. This year the volleyball tournament will include one independent team, six R. O. T. C. teams, and 18 fraternity teams. Games will start at 7:15 p. m. November 7. All games will be played at the Gym Annex. The entry fee for volleyball is \$1.25 per team. The entry fee for boxing and wrestling will be 25 cents per individual.

The following rules pertain to boxing and wrestling: Rules Common to Wrestling and Boxing

Entries will close October 25, 12:00 a. m. Bouts begin November 28, 7:15 p. m. Finals December 15, 8:00 p. m. Men's gym. Entry fee, 50 cents per individual. Number of entries unlimited. Champions of the school year, 1931-32 may remain in the weight they won and are not required to move up or down a weight.

To be eligible, each contestant is required to have a physical examination (date to be announced in The Kernel), and to work out at the Gym Annex not less than two afternoons a week, besides devoting one more afternoon to road work.

Each contestant weighing in shall have three pounds grace. Contestants must weigh in the afternoon before their bout, between 1:30 p. m. and 5:30 p. m. The weights in the sports will be as follows: 115, 125, 135, 145, 155, 165, 175, and unlimited.

Special Rules: Boxing 1. Each bout will consist of three two-minute rounds with one minute rest periods in between rounds; 2. In the event of a draw, the contestants shall go another round of two minutes; 3. If a contestant is knocked down by a blow, the round ends and goes to the other boxer. After a minute rest, the next round starts; 4. Rabbit punch is barred; 5. A contestant who deliberately swings at his opponent after the song sounds shall be disqualified; 6. Failure to weigh in the afternoon before the bout shall disqualify a contestant; 7. Contestants must furnish their own tape and bandages; 8. Ten ounce gloves will be used for preliminary and final bouts.

Special Rules: Wrestling 1. Bouts shall be of five minute duration; 2. A contestant must have a time advantage of thirty seconds over his opponent's time to win. A fall shall constitute a win; 3. In the event of a draw, each contestant shall have the advantage in two bouts of a minute each. In between these two one-minute bouts, the contestants shall have a one-minute rest period. A time advantage of any number of seconds wins; 4. Should two contestants wrestle on their feet for more than two minutes, the referee shall cause them to take the "on the mat" position. The referee shall designate who shall be on top; 5. Holds barred: Strangle-hold, Hammer-lock, Full Nelson, Toe-

Bama Has Been National Champions Three Times

By A. STANLEY TRICKETT

When the Crimson Tide of Alabama surges into Lexington for Saturday's game with the Big Blue of Kentucky, football fans will be able to watch one of the most colorful teams that football annals has on record. The Red Elephants have been one of the nation's greatest eleveners during the past twelve years. They have played three Rose Bowl games in the past seven years, and are yet to be defeated in a New Year's day battle.

Much of the color and success which has been Alabama's can be attributed to their former coach, Wallace Wade, whose direction they played the inspired brand of ball that made them the nation's best several times. Now Wade is gone, Duke has claimed him, but still Alabama carries on under the leadership of young Frank Thomas, Rockne pupil of a few years back.

Alabama's first national championship came in 1925, when Wade developed a team that went through the season without a blemish. Coined to the Rose Bowl, this team started the Alabama tradition. They battled Washington, the Pacific coast champions, in a hectic battle and won 20-19. The big guns in the Alabama attack were "Pooley" Herbert, and Johnny Mack Brown, now famous football star of the movies. Hubert and Brown scored the three touchdowns in the third quarter to overtake the Washington boys, who started like a hurricane in the first half. The great thrill of the game was a 65-yard pass from Hubert to Brown, which gave the Tide a touchdown and set a world's record for pass distance while in actual play.

Leading Hubert and Brown didn't dismay the Tide of 1926; they won all their games and then took a second jaunt to the Pacific region to play Stanford in the New Year's game and set old Johnny Mack Brown, who was thrilling the Hollywood queens by that time. Stanford outplayed the Red Elephants but the Tide got a break and converted it into the points necessary for a tie. Winslett, Bama end, blocked a Stanford kick late in the last quarter and the Crimson shirted lads got the ball on the fourteen yard stripe. In four plays Johnny Mack Brown, substitute backfield ace, charged the big line of "Pop" Warner's for a touchdown. Caldwell's kick was good and with two minutes to play the score was Alabama 7, Stanford 7.

The next westward trek of the Tide came in 1930, the last year of the Wade era. The Red Elephants held, and any holds cutting off the wind. A contestant's shoulders must be held to the mat for three seconds to count as a fall. Rules 6 and 7 of Special Rules in Boxing shall also apply to Wrestling.

phants defeated Washington State by the decisive tune of 24-0. The big cannon in the Bama attack was John "Spinner" Campbell, the "Monk" of the southern gridirons. Campbell, now backfield coach of the Wildcats, was a regular formation, scoring fifteen points all by his lonesome, in what was one of the greatest performances ever given by a single player in the Rose Bowl. Now that "Monk" teaches Kentucky halfbacks that same tricky spin that resulted in two touchdowns against the Huskies of Washington State.

Alabama and Kentucky have played eleven games; so far Kentucky has only been able to win once back in 1922. The first game in 1917 was an easy victory for Bama, 28-0. In 1922 the Cats, led by Birke's Lee Fribble, present freshman mentor, downed the Tide for the one and only time. The Bama eleven of that year was making its first bid for a national championship when Kentucky put them on the skids. The score was 6-6, a very close football game as

the score indicates. In 1923 Johnny Mack Brown and "Pooley" Hubert started their three years of glory for dear Ala-bama. The 1923 result was 16-8. In 1924 Stoll Field saw a track meet as Brown persisted in carrying back kickoffs to the Kentucky goal line. The score was 42-7. Turkey Hughes made Kentucky's touchdown on the 101-yard run after he had received a Bama boot behind his goal line.

Kentucky was unable to offer the Crimson Tide much opposition in the years to follow. It was not until 1929 that they were given a chance to win. Then with the change, old man fate robbed them again. Shipwreck Kelly and Will Covington, regular halfbacks, were unable to play. The Big Blue led the Tide for three quarters, but a furious last quarter drive led by All-American "Tony" Holm sunk the Cats to the tune of 24-13.

In 1930 the Tide and Blue entertained the greatest crowd that ever filled Stoll Field. The 24,000 fans saw a game Kentucky eleven fall before the eyes of the greatest, if not the greatest, teams that the nation has ever seen. The final count was 19-0.

Last year the Tide defeated Kentucky 9-7, and the boys in blue are out to revenge what they thought an unearned victory. The Cats will



Yeah! Kentucky! Beat Alabama! Then— FANS—GO INTO

have to fight hard for the Crimson is better than last year—so is the Blue!

Call Us For All Your Drug Needs HUTCHINSON DRUG STORE Main and Deweese Phone Ash. 21 - 640

Hot soups, sandwiches, drinks. N. E. Corner Stadium CALL CLAY 390

College Shoe Dept. Mitchell, Baker & Smith, Inc. DASHING FOOTWEAR

NELLIE DON CAME BACK TODAY-- WITH A BRAND NEW DRESS DISPLAY

AT EMBRY'S



NELLY DON DRESSES The neckline and the sleeves "date" this Nelly Don wool knit emphatically Fall 1932! Ever so youthful with its novelty collar of sharkskin satin, leg-o'-mutton sleeves and colorful buttons. Nelly Don tailors it with dressmaker care and perfect fit for the small price of \$95 Just try One On



NELLY DON DRESSES Nelly Don's new pure French spun Jersey Fashions do practically nothing to your bank account and everything for your self-esteem! Styles such as this... with its young dotted collar and cuffs... V-yoke and slimming skirt. \$95 Just try One On

LARGE ASSORTMENT OF SMART STYLES THIRD FLOOR - DRESS DEPT. EMBRY & CO. (Incorporated) WHERE "NELLIE DON" RESIDES

SATURDAY, OCT. 29
9-12 P. M.
After Alabama Game

FOOTBALL DANCE

Sponsored by
Varsity Football
Team

ADMISSION
\$1.10
Tax Included

LAFAYETTE DRUG COMPANY

At our fountain, a special from 11 a.m. until 2 p.m.,
Your favorite flavored malted milk and a choice of
sandwiches—both for 20c.

OUR CANDY IS ALWAYS FRESH



With a deadly
dart in her silver
hair, she lay there
white and still

4
DAYS
STARTS
SUNDAY



Thirteen different
people had thirteen
different reasons
for wanting her out
of the way.

Any one of them
could have been
convicted of the
murder.

Millions of people have tried
to solve this baffling crime
riddle... And now the
world shall know... WHO
KILLED JENNY WRENI

THE PHANTOM OF CRESTWOOD

The drama that thrilled you on the air... amazing and
sensational on the screen!

With RICARDO CORTEZ • KAREN MORLEY
Anita Louise, Pauline Frederick, Ivan Simpson, Alison Pringle, M. B. Warren,
Sam Hardy, Mary Duncan, "Blonde" Gallagher, George E. Stone, Robert
McWade, Milda Vaughn, Gerie Gordon

Directed by J. Walter Ruben. Screen Play by Borzini Corrochi.
Doris O. Salzman, Executive Producer. Marlon C. Cooper, Associate Producer



TODAY AND SATURDAY
"GRAND HOTEL"

You'll
Want
to Know



One of the first things you college fellers coming into Lex-
ington will want to know is where to get good ice cream,
the real Kentucky kind made of pure sweet Blue Grass
cream and fresh fruits and not more than 24 hours from
the freezer. After you've been here a few days you'll know
it's Dixie you want and that it's easy to find.



You don't have
to hunt far
... "There's a Dixie dealer
near you."

Hoover Is Winner
of National Poll

Table with columns for State, H, R, T, F. Lists election results for various states including Alabama, Arkansas, California, etc.

'Beat Alabama' Is
Wildcat Howl

(Continued from Page One)
stone coaches, Frank Thomas and
Hank Crisp. Others on the squad
hampered by minor injuries have
recovered, and the Tide will hurl
the Cats have been turning in
some tip-top workouts the past few
days as they prepared for the Red
Elephants and seem to have suffered
no lasting injury to their morale by
their defeat at the hands of
V. P. L. but on the contrary seem
more determined than ever to turn
back the invaders from the Cap-
stone. Kercheval suffering for the
better part of this season with an
injured ankle has not been putting
up to his usual form, but in the
last few practices has shown that
old-time form and is expected to
reach the peak of his production
(in distance) against the Alabamians.

Both Coach Frank Thomas of the
Tide and Gamage of the Cats were
undecided about their starting line-
ups, but the probable lineups follow:
Alabama Pos. Kentucky
Leach...RE...Kreuter
Lassie...C...Luther
Kirkland...LT...Drury
Hupke...RG...Davidson
Godfrey...RT...Skinner
Dohrn...RB...Rupert
Moseley...QB...Kercheval
Chappell...HB...Darby
Holley...FB...Bach
Cain...FB...Cassady or
Miller

971 Votes Tallied
In Class Elections

Table with columns for Class, President, Secretary, Treasurer. Lists election results for various classes including SENIOR, JUNIOR, SOPHOMORE.

Vice-President
Louise Johnson...127
Catherine Cooke...72
Anna B. Gordon...54
Secretary-Treasurer
William Jones...167
Elizabeth Jones...86
TOTAL...253

FRESHMAN
President
Howard Smathers...174
William Daniel...172
Mary Daniel...58
Vice-President
Ann Stevenson...157
Margaret Gresham...114
Secretary-Treasurer
Sam Warren...155
Mary Daniel...113

O. D. K. Pledges Six
In Fall Exercises

(Continued from Page One)
addition Coffman is a member of
Strollers.
James E. Scholl, Schneetady, New
York, is a member of Alpha Sigma
Phi social fraternity. He holds
membership in Tau Beta Pi, engi-
neer's honorary scholastic fraterni-
ty, Phi Mu, Alpha, professional
music fraternity, the university Glee
club, and is associate editor of the
Kentuckian, Pan-Politian repre-
sentative, and a member of the uni-
versity debate team.
Last semester O. D. K. pledged
16 men. Only juniors and seniors
are admitted to the organization
and must have obtained sufficient
points in various activities as to
their leadership ability. The organi-
zation was founded at Washington
and Lee and is a member of the
national interfraternity honorary
council as is Phi Beta Kappa, Tau
Beta Pi, and others of similar pre-
stige.

Welfare Group
To Hear Barnard

(Continued from Page One)
of the first workers in food and
drug legislation, and collaborated
with Dr. Harvey W. Wiley in draft-
ing the laws which protect public
health.
During the World War Doctor
Barnard was state food administra-
tor for Indiana. Since that time he
has been associated with President

Hoover, going to Washington short-
ly after Mr. Hoover became presi-
dent, to organize the White House
conference.
The program for the Kentucky
White House conference is the final
result of the organization started
almost two years ago by Prof.
W. L. Norcher of Asbury College.
County committees have been ap-
pointed in each of the 120 counties
of the state to carry the message

of the conference back to their re-
spective counties.
Dean William S. Taylor of the
College of Education is the active
chairman of the Kentucky confer-
ence, and Dr. Frank L. McVey will
preside at the meetings.
—Beat Alabama—
LOST—A small back fountain pen
and French book. Finder please
return to Room 20, Boyd hall.



Today
Richard Dix in 'HELL'S HIGHWAY'

Sat. thru Tues.
RUTH
CHATTERTON
GEORGE BRENT
in
'THE CRASH'

Wed.-Thurs.-Fri.
BACK AGAIN BY POPULAR
DEMAND

'BIRD
OF
PARADISE'



"Nature in the Raw
is seldom MILD"

RIDE 'EM, COWBOY
"Nature in the Raw"—as expressed
in the famous rodeo cry; inspired
by the picture in the July issue of the
National Geographic Magazine
taken at the Ski Hi Stampede,
Monte Vista, Colorado. "Nature in
the Raw is Seldom Mild"—and raw
tobacco has no place in cigarettes.

No raw tobaccos in Luckies
—that's why they're so mild



WE buy the finest, the
very finest tobaccos
in all the world—but that
does not explain why folks
everywhere regard Lucky
Strike as the mildest ciga-
rette. The fact is, we never
overlook the truth that
"Nature in the Raw is
Seldom Mild"—so these
fine tobaccos, after proper
aging and mellowing, are
then given the benefit of
that Lucky Strike purify-
ing process, described by
the words—"It's toasted".
That's why folks in every
city, town and hamlet say
that Luckies are such mild
cigarettes.
"IT'S TOASTED"
That package of mild Luckies