

KENTUCKY Kernel

Volume LXIX, Number 140
Thursday, April 20, 1978

University of Kentucky
Lexington, Kentucky

Senate approves school changes

By DEBBIE MCDANIEL
Kernel Staff Writer

A College of Engineering selective admission proposal was approved by majority vote yesterday at the University Senate Council meeting. The new policy, effective this fall, states new requirements for upper and lower-division admission and allows several options for entry into specific engineering degree programs.

The council approved the admissions policy after learning of an increase of almost 700 undergraduates in the engineering college this year. According to a council member, 15 percent of these undergraduates aren't eligible under the program's approved admission changes, but he said 85 percent of that number are expected to fail.

According to the new policy, high school applicants must have ACT math and composite scores in the top half for college bound students. College students transferring into the lower-division engineering program will need a minimum 2.0 GPA in math, chemistry, physics and freshman English.

To advance into upper-division courses, students will need a cumulative minimum 2.0 GPA in freshmen English and course sequences of freshmen chemistry, physics, and calculus. Completion of 60 semester-hours which are acceptable to the degree program will be mandatory.

The admission changes don't apply to currently enrolled

engineering students. The college plans to notify graduating high school seniors interested in engineering of the new admission requirements.

In other action, the council approved a Graduate School proposal allowing the Dean to drop graduate students who have passed the qualifying examination but exhibit academic deficiencies.

The proposal was approved by the Graduate Council before reaching the Senate Council and contains recommendations regarding new rules governing termination procedures. These rules include the creation of a document clearly stating the following criteria for graduate students: admission requirements, expected academic and professional standards, examination methods, and the time and manner of required student evaluations.

If the results of this evaluation show definite academic weaknesses, the student will receive a warning notice and be given a specified improvement period. If after this time the student shows no sign of improvement, the graduate faculty would meet to discuss the evaluation and take a vote on a termination decision.

According to the proposal, students must be notified of their evaluation results and receive written notice from the Dean regarding their termination. Students will be allowed to appeal the recommended termination to the Graduate Council.

Continued on page 8



Looking good

Landscape architecture sophomore Jennie Russell was slightly soggy yesterday after she took her surprise test in the rain. She probably wouldn't be able

to keep her transit dry today, either, since the forecast calls for scattered showers.

Happiness

By GIL LAWSON
Kernel Staff Writer

The UK Placement Service has been using a new approach in helping students get jobs they want and according to director Jim Alcorn, it's working. "Life Career Planning" is the name of the concept the Placement Service is using. Alcorn said the object of Life Career Planning is to "get the individual to start looking and thinking about how to control their life and work at what they enjoy."

In previous years the Placement Service only set up interviews with prospective employers for students. The service now offers an eight-hour course that helps students

relate their skills to the job they're interested in.

In the course, the Placement Service provides information with which students can establish priorities in matters such as the amount of leisure time they require and the area in which they would like to live.

Harry Jones, Placement Service assistant director, said five to 35 students participate in each section of the eight-hour course. "We try to let it meet the needs of the group," Jones said. He added the course looks into work values and life values and relates them to the type of employment students want.

Alcorn said this new approach stresses the importance of being happy with an occupation and en-

joying one's residence and leisure time.

He believes Life Career Planning has been successful. "The recruiters come back to us and tell us the students are doing better in their interviewing," Alcorn said.

He added the Placement Service also helps undeclared students choose a major and advises those having problems choosing a profession.

"The big thing," he said, "is to get the students thinking about what they want to do and where they want to live, even if they're only freshmen."

Alcorn said there are six steps to take once the student decides what job he is interested in:

Register with the Placement

Service and sign up for an interview. This consists of filling out a registration form and providing recommendations and references. The student can also add a grade transcript and personal resume. The Placement Service keeps these records for eight years and will send the records to off-campus interviewers.

Research the company you plan to interview with and find out as much information about it as possible. Alcorn said it is important to show interest in and knowledge of the company when being interviewed.

Go through a practice interview session with a friend and find your weak points. Keep practicing until you are comfortable with any type of

question the interviewer might ask. Attend the interview you signed up for; do not cancel appointments unless absolutely necessary. Alcorn said it is important to be punctual and properly dressed.

After the interview write interviewer and ask if he or she needs any further information. Also thank him or her for the interview.

If the company asks you to make a visit to the home office, do additional research on the company and the community in which you might be living.

The Placement Service also publishes two bulletins to help students and alumni looking for jobs.

A recruiting bulletin is put out twice monthly which lists recruiters

who will be on campus.

An alumni bulletin with job openings and requirements is published and sent to unemployed alumni.

The service has a Career Resource Library which provides information on job requirements, living areas, summer jobs, internships and resume composition. The library also has several slide shows and films on interviewing techniques. Life Career Planning and companies students can expect to encounter.

Alcorn said he would like to see more students take advantage of the resources that the Placement Service makes available. "Some students take advantage of it, but not a majority," he said.

Placement Service uses new 'Life Career Planning' to guide UK students to more satisfying future

today

campus

Voting for Student Government positions began yesterday, with turnout at the polls reported as "good."

Fred P'Pool, agricultural economics senior and chairman of the election board, said he was quite pleased with the turnout. About 1,500 students voted yesterday.

"I think that's pretty good," P'Pool said. "I would say by tomorrow we'll probably have 4,000 votes. Some people think I'm too optimistic and say 3,000-5,000. Last year we only had 2,600 (votes in the SG election)." Results from elections will be processed tonight starting at about 9:30. The winners will be announced outside the SG offices on the first floor of the Student Center about 11:30 tonight.

inside

"POPCORN," A CARTOON SERIES by Perry Cooper and Editorial Assistant B. Eric Bradley, debuts today. Check out the first panels on page 4.

state

COLLECTIONS FROM THE COAL SEVERANCE TAX, upon which Kentucky relies heavily for income, fell sharply last month, but the total in the nine fiscal months is well ahead of the previous corresponding period.

Revenue Commissioner Maurice Carpenter said yesterday the decline in March reflects the nationwide coal strike and bad weather for February. Only \$8.8 million was collected last month compared with \$9.1 million in March 1977.

nation

THE STATE VETERINARIAN'S office announced yesterday that 54 more thoroughbred mares and one stallion have been released from a breeding quarantine imposed after the outbreak of a highly contagious equine venereal disease.

J.D. Wolf, assistant director for livestock sanitation, said the horses were released after tests for contagious equine metritis, or CEM, proved negative.

THE UNITED STATES WAS PREPARED TO DEFEND the Panama Canal if the Panamanian military had tried to take the waterway by force, President Carter's chief spokesman said yesterday.

"It is safe for you to assume we would be prepared to defend American interests and the canal, as we have been," White House press secretary Jody Powell said. The White House statement was prompted after Panamanian leader Gen. Omar Torrijos declared that his regime was ready to sabotage the canal had the Senate defeated the second of the Panama Canal treaties on Tuesday night. The treaties relinquish U.S. control of the international waterway by the end of the century.

Torrijos said after the Senate's vote that if the treaty had been rejected, "we would have started another struggle for liberation." Torrijos said the close vote placed the Panama Canal "within two votes of being destroyed."

weather

CLOUDY WITH A 30 PERCENT CHANCE of scattered showers today, high in the upper 40s to low 50s. Mostly cloudy tonight with lows in the mid 30s, and the high tomorrow will be in the 50s.

History 354

The focus is on terrorism in new history course

By GAIL MCCULAH
Kernel Reporter

Acts of political violence have been prevalent in recent headlines; the names and places have almost become household words: Yasser Arafat, the PLO, Entebbe, the Red Brigade, Lebanon.

Although UK is physically and spiritually removed from the events associated with these names, students in one course are studying the past, present and future of terrorism.

Robert Tri, a history doctoral student, is teaching a course called "Terrorism in Historical Perspective" (History 354). Tri described the class as "a historical survey" in which he and his students "seek to find the roots of terrorism." The class, designed by Tri, is self-paced and completely individualized.

The 17 students enrolled in the course, most of whom are history and political science majors, are required to complete six reading

units, write a short reaction paper after each unit and write a major research paper.

One of the study units involves terrorism as it exists today — its causes and underlying purposes. In the unit, the class discusses Black September's slaying of Israeli athletes during the 1972 Olympics.

Tri presents the Black September raid as the Arab group's way of getting the public's attention. The guerrillas didn't hold the athletes personally responsible for the Arab-Israeli conflict, Tri said, but believed all Israeli citizens were guilty since they represented Jewish society.

The class covers other topics, including the origins of modern terrorism, terrorism in fiction, the ideology of terrorism and counter-terrorism (terrorism by the Establishment). It also explores the personality and psychological makeup of terrorist groups.

"There is a category of terrorism called psychotic terrorism," Tri said, "but it is a misnomer to

classify terrorism on a whole as insane."

The class also examines the future of terrorism and its relationship to technological advancement. According to Tri, many political analysts are worried about the possible use of nuclear weapons by terrorist groups.

One reason it might be possible for terrorists to gain access to nuclear powered weapons, Tri said, is that "highly developed countries tend to ignore terrorism." He said this attitude could lead to a dangerous amount of laxity in the control of nuclear material.

Although designed by Tri, the terrorism course was supported by a grant he received last summer from the UK Extension Class Program — Evening Class Division, and was promoted by Dr. Stephen Langston, assistant vice president for academic affairs; Dr. John Stephenson, dean for undergraduate studies, and Dr. Raymond Betts, director of undergraduate studies for the Department of History.

KENTUCKY Kernel

editorials & comments

Steve Ballinger Editor in Chief	David Hibbits Sports Editor	Gregg Fields Richard McDonald Jim McNair Mike Messer Betty Pearce Copy Editors
Dick Gabriel Managing Editor	Bob Stauble Assistant Sports Editor	
Thomas Clark Assistant Managing Editor	Walter Tunis Arts & Entertainment Editor	David O'Neil Photo Manager
Charles Main Editorial Editor	Nell Fields Assistant Arts & Entertainment Editor	Jeanne Wehms Photo Supervisor
Jennifer Gurr Staff Artist		

Glamour

The one thing his job doesn't have

I guess that a lot of people think this is a pretty glamorous occupation. I am referring of course, to my position as a writer for the Kernel. I'd like to talk with you a moment about my preferred position.

john cooke

Okay, sure, there are some invaluable fringe benefits to this job. I mean, I am virtually guaranteed a seat in any restaurant after I wait in line. I can cash my checks almost anywhere with two valid forms of identification, provided one of them has a picture. People usually know my name after I introduce myself and hand out my card. Red lights turn to green for me after a relatively short period and I may often turn right on red. Now, before you turn magenta with envy, there are a few things I should clear up. I have to confess that these convenient privileges do not in any way compensate for the torment and frustration of this job. You see, I have said some very, very insightful things on these

pages and no one, and I mean no one has noticed. I would like to give you a brief rundown of the revelations that you have missed on these pages:

- 1) On 4 Apr. 1978, I predicted that UK would take the NCAA championship.
- 2) On 17 Feb. 1974, I was the first non-union rug cutter to recognize that Eddie Huncker was not Ed Ames.
- 3) Last semester, I reported that Montparnasse did not serve orange juice.
- 4) No later than June of last year, I revealed that Helen Reddy had enlarged her breasts through surgery, not prayer.
- 4a) I also proved to the world that Paul Williams was not Helen Reddy in drag and that fact alone could have saved the American public ten or 12 dollars.
- 5) A couple of weeks ago, the mystery about the break of "Rocks" was solved for all practical semimaintenance. Send your answer and \$2.50 to: Rm. 114, Journalism Bldg.

7) As early as March of 1972, I foresaw an irreparable rift between the Beatles which would lead to their breakup.

8) Thanks to my astounding literary expertise, I showed the intended meaning of the line "No man is an island" is "No mayonnaise in Ireland."

9) Years before he was recognized as the world's foremost monogamist, I said that perhaps there was a strong chance that Richard Burton might be a potential alcoholic.

10) Last week, I produced evidence that Tom Swift Meets the Grain Freaks was not written by Edgar Allen Poe. In fact, it was not written at all. Mr. Poe did pen Tom Swift Meets Charles Nelson Reilly.

Well, how do you feel now? Pretty stupid, huh? Okay, I'll give you one last chance for redemption. Show me you're still out there. Decipher this puzzle: evlaniamt-seimifehrury. Send your answer and \$2.50 to: Rm. 114, Journalism Bldg.

John Cooke is an English junior. His column appears on every editorial page of every Thursday's Kernel.



Letters to the Editor

Parking

It should come as news to nobody that there is a parking shortage around UK. However, when you hear the word shortage, the action of conservation should automatically come to mind. Yes, I do mean conservation of parking spaces.

Why is it that when some drivers come up to a space big enough for two cars they carefully park their car squarely in the center? In doing this they deprive the next driver of a parking place. Certainly some of these drivers that drive large cars figure that two of their cars wouldn't fit in the space, but they should realize that some people drive smaller cars that might fit.

It has been said that all is fair in love and parking, but after you have succeeded in finding the parking place that you wanted, don't deprive the next person of a parking place—please pull your car up that few extra feet.

Richard McInteer
Typical major sophomore

Reeks

Yesterday's article "Many are qualified—Choices are difficult" is certainly misnamed. It states that only eight candidates are "deserving of consideration." This number strikes me as being few indeed. It is admirable of the Kernel to make our decisions so clear. By informing the students that there are only two major candidates for president, and providing the students with quotes from interviews with these two experienced men, I'm sure that you have saved many students the inconvenience of judging the third candidate themselves.

Being that third candidate I must wonder why interviews were sought with them and not myself. Anyone at Monday night's forum (Kernel staff excepted) was aware that three major groups were seeking Student Government offices. Unfortunately the most influential student medium has effectively eliminated one group from consideration. I'm sure that candidates Lobb and Fitchner were as surprised as myself at the embarrassment caused by this omission. Whoever decided that I have only "good ideas and a fresh attitude" surely must have been groping for words in a rather deficient mind. This hopelessly inept attempt of representation reeks of shit, as does the Kernel.

As for my good ideas and fresh attitude—I believe they will be applied to some profit-making concern rather than the betterment of student affairs.

Dennis Reynolds
SG Presidential Candidate

Boycott

After observing the recent demonstration on our campus protesting our government's policies, I couldn't help but think of

how this group was overlooking the most obvious and effective method of protest they could use. They should simply boycott our country's universities.

Just imagine what a blow that would be to our colleges! Think of what a hard time we would have filling our campus housing and how empty our classes would be!

So, the next time our government begs them to enroll in our universities, they should simply reply, "Due to the policies of the Fascist American Pig government, we feel that to attend your schools would be hypocritical," and stay home.

Jim McCullum
Mining Engineering Junior

Paraquat

Recently the media has been scattering annoying evidence that significant quantities of illegal marijuana, imported from Mexico, may inflict permanent damage to the lungs of American pot smokers.

In a joint effort of the American and Mexican governments to combat the illegal smuggling of Mexican marijuana into the United States, the Mexican authorities are using a chemical spray, "paraquat" to inhibit marijuana growth. It seems they apply the herbicide to newly discovered fields of the weed, attempting to control it, but often before the plants can die they are harvested and smuggled north to American consumers.

Newly released government documents reveal that the U.S. Department of Agriculture warned the State Department 27 months ago not to use the herbicide paraquat in its anti-drug spraying program in Mexico. According to the Zodiac News Service, the scientific studies conducted by the Department of Agriculture informed the State Department, in December of 1975, that paraquat possesses greater potential health hazards than any other herbicide known.

Despite this warning the State Department and the Drug Enforcement Agency supplied funding, advisors and airplanes during the next two years to Mexican officials for the application of paraquat on marijuana fields south of the border.

Now the U.S. Department of Health, Education and Welfare (HEW) reports the poison is being found on up to 20 percent of the marijuana smuggled into the United States from Mexico. HEW secretary Joseph Califano has warned that highly toxic herbicide might produce irreversible lung damage known as "fibrosis" in pot smokers.

The first cases of paraquat poisoning, caused by smoking contaminated weed, have been reported in San Francisco's Haight Ashbury Medical Clinic. Zodiac News Service reports that Dr. David Smith has treated three persons suffering from pulmonary hemorrhaging. Smith says the disorder is characterized by "respiratory distress," accompanied by the coughing up of a foamy discharge discolored with blood.

The doctor also reported the three

subjects as "heavy users" of contaminated marijuana. Each subject learned through independent studies the pot they had been smoking was contaminated by the herbicide paraquat.

In spite of these cases American officials insist that they cannot tell Mexican officials what to do. The State Department and the White House stated that all they can do is "inform Mexico of the paraquat problem and let the Mexican government decide on its own if it wants to continue the use of paraquat."

The State Department is unable to explain why none of the information regarding paraquat has been forwarded to Mexican authorities. The National Organization for the Reform of Marijuana Laws (NORML), a lobbyist for the decriminalization of marijuana, is trying to file suit against the U.S. government's irresponsible role to the American public in its Mexican anti-drug efforts.

James A Nelson
Arts and Sciences Junior

'What a riot'

What a riot, Mark Mann! (Kernel, Apr. 17, 1978, editorial section) I guess that the essence of that equal station that we "assume among the powers of the earth to which the Laws of Nature entitle us," the essence of those liberties which inhere in human beings, those "unalienable rights" lie in reality, not with a person dignified perspective but with "membership dues paid yet, buddy?" approach.

Oh, dear, better watch out, you tax evaders; Iranian, French, German, Canadian, etc. students; Mexican crop workers; visiting ambassadors; overseas vacationers; UN delegates: for you are a class of humans below Mark's, his rights exceed yours (if you have any in this country at all). Your fate is left up to his mercy, for, you see, he belongs to the "club." He has paid his dues.

Karen Grunstein
Junior

Thanks

We would like to express our sincere appreciation to the faculty and students of the University of Kentucky for tolerating our recent helicopter equipment lift to the top of Kirwan Tower.

Enroute, weather, for the second time, delayed the arrival of our helicopter and forced cancellation of the 11 a.m. lift. We are grateful to the safety personnel, officials and administrators of the University for their understanding and cooperation in allowing us to reschedule the lift for that afternoon.

Finally, a special thank you to the occupants of the Kirwan residence complex for their patience during the evacuation of their buildings.

Grasis Corporation
500 Gardner Avenue
Kansas City, Missouri

Socialist editor to speak

The Lexington In These Times associates are sponsoring a public talk by the paper's general manager, Nick Rabkin, this week.

comment

In These Times is an independent socialist newspaper, published in Chicago. It is part of a renaissance of socialist thinking and practice that has occurred around the world in the last twenty years. Its goal is to make socialism a public issue, introducing the idea to the mainstream of American life and institutions.

In These Times stands for democratic socialism. We reassert the socialist commitment to both liberty and equality. A movement for social equality without the commitment to liberty, as the historical record testifies, can never achieve genuine equality, because the people, as the movement accedes to power, are deprived of the right to practice self-determination in mutual relationships.

Liberty, without the commitment to equality, on the other hand, as the history of even the most wealthy capitalist societies reveals, never achieves genuine liberty for all, and threatens its destruction for each, because the people are deprived of real access to practicing liberty, to exercising their rights and assuming

their responsibilities in directing their own social and personal affairs.

Liberty becomes the power and privilege of the few, an instrument for the manipulation and exploitation of the many. As the mask for narrow self-interest destructive of community and mutuality of social responsibility, liberty divorced from equality discredits genuine liberty itself and places it in jeopardy to disillusion and cynicism. Liberty arrayed against equality dissolves real liberty in its own virtue of "law and order," vigilante coercion, intolerance of dissent and non-commercial diversity, and knee-jerk reaction.

In the United States, the material, social and cultural developments of the 20th century have established the conditions for the achievement of both liberty and equality, just as they have pitted the two in the most intense opposition. Either they will be reconciled and realized together, or we will have a society where both continue to be dishonored and degraded if not altogether lost.

United States history presents us with a storehouse of experience in people's efforts to achieve the combined development of liberty and equality. In the industrial era since the mid-nineteenth century, those efforts lay at the heart of abolitionism, populism, Afro-American national and civil rights movements, the women's movement

and labor and socialist movements, including the similar and more diverse movements of our own times in the past two decades.

Through United States history, the popular aspiration for both liberty and equality has fed both the utopian optimism of the brighter, more generous image of America and, in the rhetoric of the guardians of the Corporate Way, the routine hypocrisy of everyday business and politics. The growing doubts about their combined achievement underlie the sinking pessimism spreading among thoughtful persons about the shape of America's future. If there is an honorable American Dream, this is it—the wedding of liberty and equality.

This point of view runs directly counter to recent statements by leading defenders of capitalism, such as the Trilateral Commission, which argues that the struggles of poor and working people for equality are undermining our liberties by weakening our economic system.

We believe democracy will survive only with democratic popular control of capital investment decisions made in the interests of people, not profits.

Nick Rabkin will speak on the prospects for a popular American socialism at 7:15 p.m. tonight at the Lexington Public Library, 251 West Second St. Everyone is invited.

Tom Parsons
Lexington In These Times associates

"TO CREATE MEANINGFUL STUDENT CONTROL OVER STUDENT AFFAIRS FROM THE PREAMBLE OF THE CONSTITUTION OF STUDENT GOVERNMENT"



After observing the recent demonstration on our campus protesting our government's policies, I couldn't help but think of

The Italian situation

Terror's turning point

This comment is the first of two parts. Part two will appear tomorrow.

By MICHELE PAVON

Thursday, Mar. 16, 1978, 9:15 a.m. Rome. Aldo Moro, the president and most prestigious leader of the Christian Democratic Party (DC), is kidnapped by a commando of the Red Brigades.

commentary

It is immediately clear that this episode represents a turning point in the strategy of terrorism in Italy. Instead of confusion and insecurity, the new goal is to spread fear and panic among the masses. What kind of support can groups like the Red Brigades count on? What is the ultimate goal of the forces which are backing them? Why was Moro the "right" target?

For the answers to some of these questions, and hypotheses on others, we must closely analyze the role played by political violence in the Italian scenario during the last ten years.

1968. The country is in a difficult situation. The economic policies chosen by the center and center-left governments in the post-war period are showing their dramatic shortcomings. Italy has produced many cars and freeways, but few schools and hospitals. Millions of people have left the country to live in the cities, which have grown without planning.

Agriculture, lacking the necessary support for a profound transformation, is incapable of providing many necessary food items, which Italy is forced to import, overburdening its balance of payments. Southern Italy has been abandoned to its historical problems of unemployment, emigration, backwardness and the mafia. The educational program is obsolete, often the same as in the fascist period. The DC power network is based on a number of state-owned companies which waste much of the country's financial resources. The corruption of the ruling causes popular distrust of the state institutions.

In the 1968 elections, the Communist Party (PCI), which has given a voice to the

popular dissatisfaction, scores considerable gains. The PCI, having its base in the factory working class, comes out of the ideological ghetto in which the Cold War had confined it in the spring of 1947.

March 1969. Bombs are found on trains in several locations in Italy. It is the beginning of what will be called the "strategy of tension."

Spring 1969. Student protest explodes in high schools and universities. The "Hot Fall" of 1969. Steelworkers, the most advanced segment of the labor movement, engage in a long struggle with steel corporations for a new contract. The corporations' determined effort to stop the steelworkers is defeated. The victory opens new prospects for the entire labor movement. Since then, workers have played a central role in the country's democratic institutions.

December 12, 1969. Milan. A bomb, placed in the Bank of Agriculture, kills 16 persons and wounds nearly 100. Investigations are immediately directed toward an anarchist group, the weakest in the so-called extraparlimentary left. The "monster" is soon recognized to be anarchist Pietro Valpreda. Another anarchist, Pinelli, "commits suicide" after an interrogation in the police station. The story has similarities to the JFK murder. In both cases there is a fabrication by the police intended to make people believe that a lone leftist is responsible for the crime and to hide the real perpetrator of the crime. Valpreda and Oswald are designed to be the "monsters" before the criminal acts even take place.

Soon, the work of thousands of leftist militants provides a different version of the facts. A fascist group, led by attorney Franco Freda, editor Giovanni Ventura and neo-Nazi Pino Rauti, was responsible for the bombs on the trains and in the bank. The group was based near Venice and could count on important national and international protection and support. This group was one of the militant arms of the neofascist MSI party.

The role of the MSI changes dramatically in 1969. Large payoffs are made to the party

during this period by Italian businessmen like Monti, Garrone, Pesenti (oil and sugar magnates) and by American individuals, some of them made directly by ambassador Graham Martin. The latter contributions are part of some \$50 billion given to the Italian right by the U.S. since World War II. The MSI also receives money and sends some of its militants to be trained in military camps in that country.

One of the militants, Mario Merlino, actually infiltrates, along with a police agent, Valpreda's anarchist group.

It will take years to fully discover the role of Gian-nellini, a member of the fascist cell in Padua. This rightist journalist was an SID (the Italian version of the CIA) agent and represents the key to the whole story. The desperate attempt made by important representatives of the police, the courts and

the DC to cover this agent's affiliation with the SID, showed that the fascists had been a tool in the hands of the secret agencies, used to try to roll back the labor movement, the student movement, the whole left.

In planning and executing this strategy, called the "tension strategy" and continued to this day, the SID cooperated with national and international forces. This analysis, then barely believed by even the PCI, is now part of the modern history of Italy, accepted even by a considerable part of the DC. Despite the concerted effort of reactionary forces to defeat the worker movement, popular determination to fight neo-fascist terrorism grew significantly during this period, bringing millions of Italians into the political arena.

Michele Pavon is a graduate student in Mathematics.

SUMMER JOBS

A lot has been said about working with the Varsity Company here at U.K. Here are a few facts you may not be aware of:

- (A) Our Average Income last summer was \$5,311 per student.
- (B) We have never had a Kentucky graduate of our program not be accepted for Graduate, Law, Dental, Veterinarian, and YES...even Medical School.

We have a few jobs left. If you think it's time you learned about handling yourself and others, call one of our U.K. student managers for an interview.

GOOD LUCK, you'll need it!

Donnie Berry	258-4547	Greg Hester	258-4052
Jim Brown	858-3412	Steve Hester	253-1935
David Loucks	233-0248	Doug Morris	258-4306
Jim Morre	233-3951	John Newhall	258-5063



©1977 Miller Brewing Co., Milwaukee, WI.

WE'VE KEPT VALUES IN SIGHT.

Hard Contact Lenses **89.95**

Soft Contact Lenses **169.95**

price includes a complete thermal care kit

A FINE SELECTION OF COMPLETE QUALITY EYEGLASSES

Single-Vision as low as **24.95**

Bifocals as low as **34.95**

We have the latest in prescription and nonprescription fashion sunglasses and lens, including B&B RayBan

Monfried Optical

Zandale Center
2240 Nicholasville Rd.
278-9487

Garden Springs Shp. Ctr.
276-4479
Franklin Square Shp. Ctr.
233-2314

Not subject to further discount.

Now comes Miller time.



nel, I
ual the
the
rich
ose
ity,
per-
ship
sch.
tax
ian,
ican
am-
ers;
is of
ghts
his
up to
es.
isen
mior

our
culty
y of
e cent
e top


econd
our
ion of
ful to
y and
y for
ration
e lift

to the
denice
uring
igs.

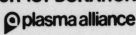
ration
venue
ssouri

CHECK IT

In the Kernel
A & E section
every Friday


KENTUCKY
 MIDNITE MOVIE
FRI. & SAT. \$1.00
"RABID" (R)
CINEMA
 the WACKIEST,
 SEXIEST, OFF-the-WALL
 ADULT movie EVER!

BIG THUMBS
 you have to see it
 to believe it
 JAMIE GILLIS-DAVID LIPMAN
 JANETTE SINCLAIR
WEEK DAYS
 12:15-1:40 / 4:15-9:20
SAT. & SUN.
 1:45-3:20 / 4:45-9:20

WHAT IS BUDDHISM?
 and Buddhist meditation . . . ?
 A Lecture by
Rev. Piyadassi
 Professor of Buddhism from
 SRI LANKA
7 p.m. Thurs., April 20 C.B. 110
 Free admission Open to Public

UP TO
\$100
PER MONTH
\$2.00 EXTRA WITH THIS AD
FOR YOUR 1ST DONATION=\$12.00

 754-8047
 2040 Oxford Circle
 Cardinal Valley Shopping Center
 8a.m.-7p.m. Mon.-Fri.
 Sat. 8am-3pm

BREAKFAST

Two Egg Omelet (Plain)	\$.85
Cheese Omelet	\$1.00
Ham or Corned Beef	\$1.00
(with tomato, onion and green chili peppers)	\$.25 extra
Egg sandwich	\$.85
Ham and Egg Sandwich	\$1.50
Home Fries	\$.70
Orange Juice (10 oz.)	\$.40
Breakfast Served Til 11:30 A.M.	

ENCHILADAS

Cheese and onion	\$.85
Beef	\$.85
Beef and sour cream	\$1.00
Green chili	\$1.00
Chicken & sour cream	\$1.00
Sour Cream	\$.80

TACOS & TOSTADOS

Beef	\$.70
Bean	\$.40
Beef and Bean	\$.75
Chicken	\$.75

BURRITOS

Beef	\$.85
Bean	\$.50
Beef and Bean	\$.95
Beef and Sour Cream	\$1.00
Chicken and Sour Cream	\$1.00

CASSEROLES

Chicken and rice	\$1.00
Chito Sherries	\$1.70
Phase allow 20 minutes for casseroles.	

SIDE ORDERS

French Fries	\$.55
Refried Beans	\$.55
Mexican Rice	\$.65
Peas and Corn	\$.55
Tortillas	\$.25
Tossed Salad	\$.65
Chef Salad	\$.95
Bu Cheese (ROQ)	\$.30 extra

EXTRAS

Green Chili	\$.35
Red Chili	\$.35
Cherry	\$.35
Letto, Tomato and Onion	\$.35
Beef and Red Chili	\$.30
Beef and Green Chili	\$.30
Hot Sauce	\$.30
Jalapenos	\$.35

CLUBHOUSE
High On Rose
 corner of High &
 Rose Streets 252-9653

The ones for the job

More Kernel candidate endorsements

It really isn't fair — to the readers or to the candidates — to run endorsements on the second day of SG elections but, for a variety of reasons, some candidates worthy of consideration were unintentionally omitted from the list in yesterday's Kernel.

Three senators, two seeking at-large seats and one seeking election in the College of Arts and Sciences, are deserving of the opportunity to serve in SG. That their names were omitted

from yesterday's list is not an implication that they are any less qualified than those who were mentioned yesterday.

He has pledged to continue his work on upgrading Student Advisory Councils and will lobby for a realignment of the ticket distribution procedure.

"It's important to have good organization," Sturgeon said in an interview Tuesday. "You have to have organizers organizing organizers — it's the only way to get things done."

committee work in the past year has put him close to several issues, which he will pursue if elected again.

Sturgeon hopes to be elected to his third term in the Student Senate. He has experience with and a thorough understanding of parliamentary procedure and legislative process. His

"I just don't know about some of the other people running. Sure, a lot of them are concerned and want to work, but I don't know how much they know about the way SG works, and what it takes."



Brad Sturgeon

Brad Plashke

Micrael Whitlock

TELL THEM YOU SAW IT
 IN

THE KENTUCKY KERNEL

CHECK THE CLASSIFIEDS!

POPCORN

FRICK CLONE, DID YOU READ ABOUT THE STUDENT BY VYLE WHO SAID THAT HE'D LEARNED TO BUILD AN ATOMIC BOMB IN CLASS?

OF COURSE I'VE READ ABOUT IT. WHY?

WELL, I THOUGHT YOU'D LIKE TO KNOW THAT I MET THAT STUDENT LAST SUMMER...

AND IS BETTER GET A 95 ON THE EXAM TOMORROW, UNDER STRUD?



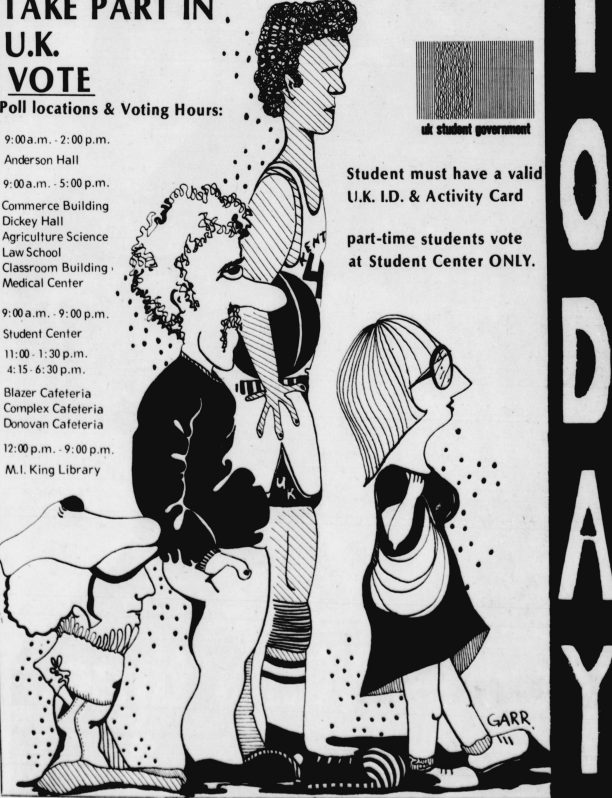
By Cooper and Bradley

LAST DAY!!
TAKE PART IN
U.K. VOTE
Poll locations & Voting Hours:

9:00 a.m. - 2:00 p.m.	Anderson Hall
9:00 a.m. - 5:00 p.m.	Commerce Building Dickey Hall Agriculture Science Law School Classroom Building Medical Center
9:00 a.m. - 9:00 p.m.	Student Center
11:00 - 1:30 p.m.	4:15 - 6:30 p.m.
Blazer Cafeteria Complex Cafeteria Donovan Cafeteria	
12:00 p.m. - 9:00 p.m.	M.I. King Library


Student must have a valid U.K. I.D. & Activity Card

part-time students vote at Student Center ONLY.



TODAY

• POOL • PINBALL
 • VIDEO GAMES • FOOSBALL
 • ARCADE GAMES
CAMPUS BILLIARDS
 130 W. Euclid Avenue
 Near U.K. campus next to Tolly Ho

BIG B
ONE HOUR DRY CLEANERS
 Chevy Chase Lexington Mall
 Overbrook Winchester Road
 Lansdowne
 Northland Turfand Mall
 Versailles Road
 East Piccadille


THURSDAY IS UK DAY!
All UK Students & Faculty Special Values!

TROUSERS, SKIRTS, SWEATERS, SPORT COATS	PLAIN DRESSES, PANT SUITS, MEN'S SUITS
79¢	\$1.49
SHIRTS LAUNDERED TO PERFECTION FOLDED OR ON HANGERS	35¢ each



arts

A foole in the Supreme Court

Carlin's work still not safe for airwaves

WASHINGTON (AP)—Comedian George Carlin may be "boffo" on the college concert circuit, but one sample of his irreverent brand of humor may bomb at the Supreme Court.

There were no smiles in evidence Tuesday as a very select audience of nine justices considered whether a Carlin monologue should be banned from the airwaves.

The justices' final critique probably won't be announced until late June.

At issue is whether the government, namely the Federal Communications Commission, can ban certain "dirty words" from broadcasts.

The controversy stems from the playing of Carlin's Occupation: Foole album, on a non-commercial station in New York City radio station, WBAI-FM, almost five years ago.

Jazz concerts coming back to UK next year

By M. TIMOTHY KOONTZ
Kernel Reporter

Jazz, as an art form, suffers miserably at UK.

Every outside jazz group booked at UK for the last three years has lost money and future jazz concerts are expected to lose money also.

Why then has the Student Center Board Concert Committee lined up five major jazz acts to perform at UK next year?

"We don't just try to entertain the UK community," explained John Herbst, program director for the Student Center Board. "It's important to us (in booking concerts) to try and induce a cultural awareness into different areas of the performing arts."

Herbie Hancock, Weather Report, Chick Corea all failed to break even financially in their performances at UK over the last several years. For awhile, the concert committee had a "hands-off" policy for scheduling any type of jazz shows at UK.

"Jazz is a real loser on this campus," remarked one concert committee member earlier this year.

The Preservation Hall Jazz Band concert was sponsored by the performing arts committee, also a SCB organization, along with outside support from the Southern Foundation of the Arts. Unlike the concert

committee which must support itself, the performing arts committee spends an annual allocated sum.

As a result of "changing moods on campus which have created a broader base for various genres of the arts," the concert committee is returning jazz programming to UK.

Next year, tentative bookings for Memorial Hall include Dave Brubeck, Oregon, McCoy Tyner, Ron Carter and Larry Coryell.

"It's obvious that bringing in certain areas of the performing arts is not a profit making enterprise," Herbst said. "O'Keefe's (a bar on West Short Street) has been the only consistent jazz programmer in Lexington."

A greater rapport between the jazz performer and the audience is needed at UK, according to Herbst. "I'd like some of these programmed jazz musicians to become involved with in-residence workshops or master-class training after their performances."

"Jazz has always been recognized as an art form," Herbst said, "but on this campus, jazz will never be a profit making art."

Editor's note: This is the first of a two-part feature on the return of jazz to UK. The second part will give greater details of the program coming next year.

In the monologue about "cuss words," Carlin takes a satirical look at how society deals with words depicting sexual or excretory organs and activities.

After receiving a complaint from a WBAI listener whose young son had heard part of the broadcast, the FCC decided to clarify its definition of the term "indecent."

The commission said Carlin's use of seven specific words made his monologue indecent, and ruled that those words never may be used on the air at times when children might be listening.

A federal appeals court last years struck down the FCC's ban. It said that as in cases of alleged obscenity, words deemed indecent must be considered in context to determine whether they have any "serious literary, artistic, political or scientific value."

The context test for judging whether a work is obscene was prescribed by the Supreme Court in a landmark 1973 ruling.

The Justice Department refused to represent the FCC in court because Justice Lawyers agreed with the appeals court that the ban was overly broad.

Carlin was absent from Tuesday's courtroom proceedings. So were the two FCC lawyers.

Before FCC lawyer Joseph Marino began to argue, Chief Justice Warren E. Burger advised him that the court was "fully aware" of the facts of the case and that he could proceed to the legalities. Marino stuck to vague terms when dismissed what he called "verbal taboos."

WBAI's lawyer, Harry Plotkin of Washington, portrayed WBAI as an educational station ad said it is similar to a popular local television station. "Not quite," snapped Justice William H. Rehnquist.

Plotkin was weaving his way through First Amendment arguments — "the government is trying to suppress speech" — when Burger asked in incredulous tones, "Are you arguing that this work had literary value?"

Plotkin could barely reply "yes" when Justice Thurgood Marshall interjected: "I'm no expert but if that is artistic, deliver me."

If the Justices decide that the words in question are never suitable for airing, Carlin's work will be in good company.

As the appeals court noted, "The commission's action proscribes the uncensored broadcast of many of the great works of literature, including Shakespearean plays...the works of renowned classical and contemporary poets and writers, and passage from the Bible."

vote today

ENTAM and SUNSHINE PRESENT
GRATEFUL DEAD
TOMORROW 7:00 PM
TICKETS ON SALE NOW
ORDER BY MAIL NOW
LEXINGTON CENTER'S RUPP ARENA

CONSOLIDATED SALES COMPANY
CSS'S SUPER SOUND SAVINGS... YOU'VE NEVER HEARD IT SO GOOD!
ON SALE TODAY THRU MONDAY, APRIL 24

TODAY'S TOP HITS ON STEREO! ALBUMS OR 8-TRACK TAPES!
\$4.97 ALBUM OR TAPE! YOUR CHOICE!
Save 37% From Nationally Advertised Price!

Select From:
• JACKSON BROWNE "Running On Empty"
• ROD STEWART "Foot Loose & Fancy Free"
• FLEETWOOD MAC "Rumours"
• GORDON LIGHTFOOT "Endless Wire"
• EMMYLOU HARRIS "Quarter Moon In A Ten Cent Town"
• BOOTSIE'S RUBBER BAND "Bootsy"
• ROBERTA FLACK "Blue Lights In The Basement"
• ABBA "The Album"
• CHIC "Chic"
• ANDREW GOLD "All This And Heaven Too"
• VAN HALEN "Van Halen"

LITTLE FEAT "WAITING FOR COLUMBUS"
\$6.97 ALBUM OR TAPE! YOUR CHOICE!
Save 29% From Nationally Advertised Price!

GEORGE BENSON "WEEKEND IN L.A."
\$8.97 ALBUM OR TAPE! YOUR CHOICE!
Save 30% From Nationally Advertised Price!

OPEN DAILY 9AM-10PM
CLOSED SUNDAYS
2397 RICHMOND ROAD
Phone 269-3359, Prescriptions 269-3379
AT NEW CIRCLE INTERSECTION
CONSOLIDATED SALES COMPANY QUALITY DISCOUNT DEPARTMENT STORES

U-STOR-IT Leave your goods with us
MINI WAREHOUSE this summer!
Monthly rates available
Call 233-3688
New Circle & Winchester Rd. Interchange

WHITWAY LAUNDRIES
WELCOME ALL U.K. STUDENTS AND FACULTY
2 LOCATIONS
Chev Chase Coin Laundry Whitway Coin Laundry
312 S. Ashland Ave. 393 Waller Ave.
8:00 AM — 10:00 PM
7 days per week
Clean, modern equipment
Courteous Attendants

LAN-MARK STORE
Your Lexington Headquarters For:
• Khakis • Duck Head Jeans
• Straight Leg Levi's • Bib Overalls
• Wind Breakers • Red Wing Boots
361 W. Main 254-7711

HELP!
LET ME
OUT OF
HERE!!



**Take Your Professors
Home With You
This Summer.**
(By mail, of course!)

**Let Independent Study
Get You Ahead or Help
You Catch Up.**

COME BY OUR INDEPENDENT STUDY OFFICE
RM 1, FRAZEE HALL AND LOOK THROUGH THE STUDY GUIDE.
We have 97 professors with courses & willing to travel.

KENTUCKIAN '78 Yearbook

Limited number left for advanced sale
so get it while you can for only \$6.00

advance sales start: in Rm. 113A or
Tues. April 18 Rm. 210 Journalism Bldg.

The 78 Kentuckian contains: Complete NCAA coverage
(from the game to the Airport), as well as color coverage
for Regular Season Basketball and Football plus many
other campus activities.

Books will be here for pick-up May 8th.

K

sports

Rain, cold, darkness precede cellar

Even if they were only playing for bragging rights to the occupancy of last place in the Southeastern Conference's Western Division, Kentucky and Tennessee battled rain, cold weather and darkness at the Shively Sports Center baseball field yesterday.

An on-and-off rain system muddied things for the afternoon as the Wildcats split a doubleheader with the Vols.

After a delay of an hour, the

two teams took the field for pregame warmups. But when the leadoff batter for UT approached the plate, the rain poured once again.

Twenty minutes later, play began. Apparently, the only team which was "all wet" was UK, because Tennessee hit and ran its way to a 6-4 first-game victory.

In the top of the second inning, UT's Stan Loy and Steve Pinkham both drew walks and later scored to give

Tennessee a 2-0 lead.

In that early rally, Bernie Beazley lifted a Texas leaguer into shallow right field while teammate Bruce Basham tapped an unintentional bunt to advance the runners. A wild pitch aided the UT cause.

UK tied the game in its half of the inning. Shortstop Jeff Schartzler drew a base on balls and went to third on second baseman Chuck Long's grounder, which bounced off the glove of the UT first baseman.

The next stanza found Tennessee recapturing the lead. With two out and the bases loaded, Pinkham doubled to the deepest corner of right field to bring home all three runners.

UK added two more runs before it was over, but it was not enough to overtake the Volunteers, who also added a run.

Kentucky's starting pitcher, Tim Brandenburg, went the entire seven innings in the first game.

The finale for the day gave the few fans some recompense, as UK won it 4-2.

The game was awarded to Kentucky because of darkness in the bottom of the fifth inning after two UK hitters had drawn walks and Freddie Smith had barely been able to see a low, inside pitch.

Kerry Jolly, who began the deciding game of the series with a 1-4 record, pitched a gem of a game, according to UK coach Tuffy Horne.

"The reason we won was the way Jolly pitched," Horne said. "The way he pitched, you know the game must've meant something to him."

"It rubbed off on the rest of the team. He was directing traffic out there."

Both teams tallied a run apiece in the first inning. For the Cats, first baseman Randy Gipson singled to left field, driving in Long, who had reached base via a walk.

Kentucky collected two more runs in the third inning and another in the fourth to nail down the victory.

Designated hitter Mike McDonald pounded a key double to left field in that third stanza.

"Mac didn't even dress yesterday," Horne said of McDonald.

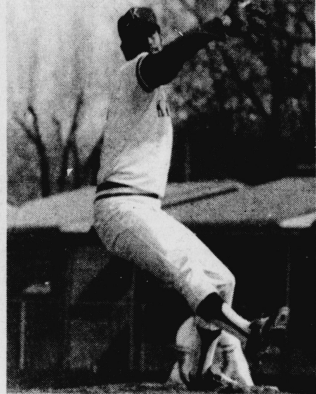
By salvaging the split yesterday, both Kentucky shares the cellar with Tennessee at 6-11.

UK owns an 18-19 record overall now and is approaching the 500 mark because of the recent long home stand.

"It's not a time of the season to have pep talks," Horne said of the current mood of his team. "The time for that is over."

Kentucky is still shooting for second place in its division, but will probably have to win its seven remaining conference games.

The Cats will face a Bellarmine College in a non-conference game today in a 3 p.m.



Kerry Jolly, shown firing a pitch in an earlier game this year, went the short distance of five innings yesterday in UK's 4-2 win for a doubleheader split with Tennessee.

No Moleste wins feature at Keeneland

(AP) — No Moleste slipped through along the rail on the turn yesterday to win the \$8,000 Homewood Purse at Keeneland.

J.W. Roland's 3-year-old held off Sundance Stable's Imminent Danger by a length for his third straight win. E.A. Seltzer's Pool Court was 3 1/2 lengths further back in third.

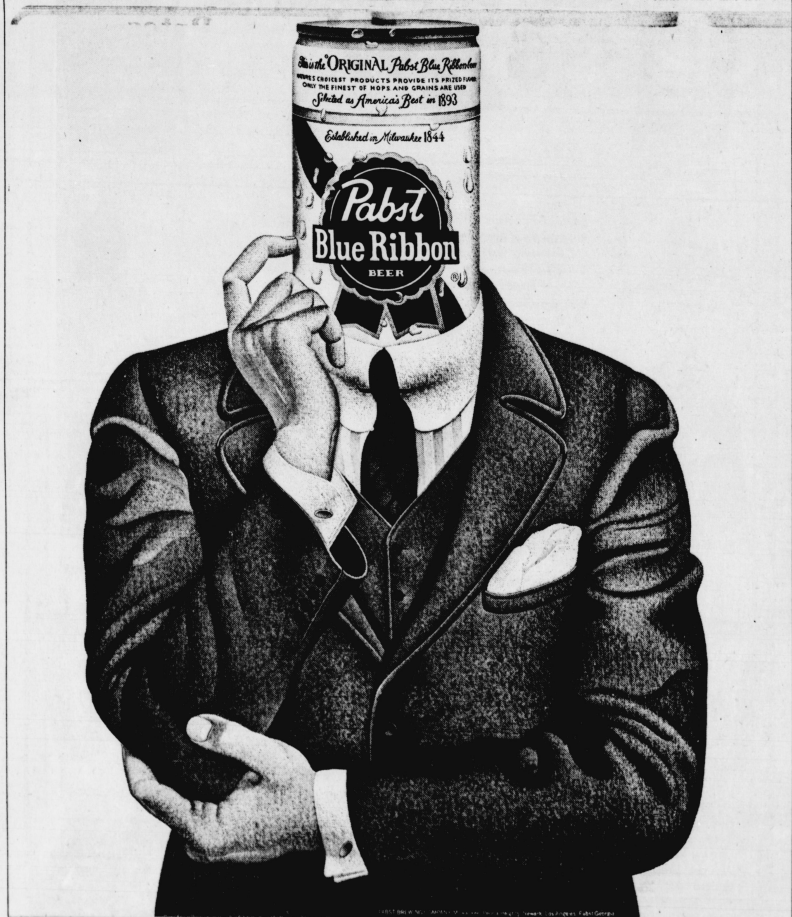
No Moleste ran the seven furlongs in 1:25 over the sloppy track to give jockey Jimmy McKnight his second consecutive victory. He paid \$5.60, \$3.40 and \$2.60. Imminent Danger paid \$4.60 and

\$2.80. Pool Court returned \$3.60 to show.

When the early leaders, Uruguayida and Pool Court, drifted out on the turn, McKnight sent No Moleste to the lead along the rail. Imminent Danger drew even in the stretch but No Moleste rallied to pull away near the wire.

In a 1 1/16-mile supporting feature, Kentucky Derby nominee Chief of Dixieland splashed from last place to defeat Putty by a neck with Entebbe third. He ran the distance in 1:48 3/5.

"I've got Pabst Blue Ribbon on my mind."



KAPPA ALPHA
presents
SHARECROPPER'S BALL
Friday, April 21 from 9-1
at the National Guard Armory (Airport)
Featuring: the **TRENDELLS**
Tickets \$5 couple from a KA
\$6 at the door.

**vote
today**

GENERAL CINEMA THEATRES
ALL CINEMAS—EVERY DAY 'TIL 2:30 P.M.—\$1.50

FAYETTE MALL ONE WEEK ONLY Times: 1:30-3:30 5:30-7:30-9:30 THE GENE WILDER WORLD'S GREATEST LOVER	FAYETTE MALL ONE WEEK ONLY Times: 2:30-4:30 7:30-9:30 "ANNIE HALL" WOODY ALLEN DANIE KEATON
TURLAND MALL ONE OF THE MOST SPECTACULAR MADE Times: 2:30 6:30-7:30-9:30 CLOSE ENCOUNTERS OF THE THIRD KIND	TURLAND MALL NOW SHOWING EXCLUSIVE!! Times: 1:30-3:30 5:30-7:30-9:30 Starring: Robert Mitchum & Cathy Niles THE GUN BOONE CLARK COURTNEY FOX MILLS

Where will it end? NCAA shooting buries previous record

MISSION, Kan. (AP) — Those boys in the backroom of the National Collegiate Athletic Association, the NCAA Statistical Service, rummaged through their basketball figures and came up with some mathematical conclusions yesterday about this season.

In their words, "The country's major-college basketball players have done it again. They have set another record high for field goal accuracy."

All of the NCAA's Division I players combined for a 47.3 field goal percentage, bettering by six percent the

previous record set in 1977. That, say the statisticians, is the 27th such increase in the last 20 years.

If that doesn't grab you, consider this: Exactly 53 teams shot at least .500 ball this season. That's better than one out of every five major teams of the 254 in Division I. In 1977, the 500 teams totaled 35.

Arkansas repeated as the best field goal shooting team with .546 percent, just missing the record .547 set by Maryland in 1975. Southern University followed with .545, national champion Kentucky with .541 and North Carolina

Wilmington with .540. The other seven national team statistical leaders were:

Won-lost percentage, Kentucky, 30-2 for 938; free throws, Duke, with .791; scoring margin, UCLA, 17.9, averaging 85.3 points per game; scoring offense average, New Mexico, 97.5 per game, and scoring defense, Fresno State, 52.5 per game; rebound margin, Alcorn State, 16.3 per game by averaging 52.3 against 36.0 for opponents, and Delaware State had the best defensive average of .407 against opponent field goals, barely

edging Kansas with .408. Here and there:

Field goal attempts, an all-time low at 127.4 per game for both teams; personal fouls, about average at 40.5; missed shots per game, free throws and field goals combined, averaged at 79.

The Atlantic Coast Conference led other conferences in field goal percentage with .509 and in scoring at 81.4; the ECAC New England Independents led in free throw percentage with .717; the Midwest Independents led in field goal defense at .449, and the Ivy League had the best scoring defense at 68.4



The return of the high-percentage dunk shot in college basketball during the last two years complements the ascent of shooting percentages in NCAA Division I competition. In figures released yesterday, the 254 Division I schools shot a combined 47.3 percent, six points better than the previous record.

Jim McKay and nine breeders are honorees

(AP) — A sportscaster and nine thoroughbred breeders will be honored at the Governor's Award Luncheon May 4 at Louisville's Churchill Downs, the Thoroughbred Breeders of Kentucky announced.

Jim McKay, winner of seven Emmy awards as an ABC-TV sports commentator, was selected as the eighth recipient of the Englehard Award for general excellence in covering the thoroughbred industry.

Ben Castleman, a Covington restaurant owner and member of the Kentucky State Racing Commission, will receive the P.A.B. Widener Trophy for significant accomplishments in thoroughbred breeding.

Castleman established White Horse Acres here in 1954. The farm's foundation mare, Fair Chatterer, produced My Charmer, whose first foal was Seattle

Slew, last year's Triple Crown winner.

Other breeders to be honored are:

—Mrs. Edward H. Gerry of Lary F. Ranch for Fogo, handicap champion and former horse of the year.

—Admiral and Mrs. Gene Markey of Calumet Farm for Our Mims, champion 3-year-old filly, and Alydar, winner of the Flamingo Stakes and Florida Derby this year and an early Kentucky Derby favorite.

—J.R. Battersworth for My Juliet, champion steeple for year-old filly.

—Raymond R. Guest of Powhatan Plantation for Cascapedia, champion handicap mare.

—Mrs. Charles W. Englehard for Exceller, champion grass horse.

—Mrs. June McKnight for Alleged, best Kentucky-bred racing abroad.

Vote Today

Kick-off Party for the Alpha Gamma Delta-Sigma Nu SPRING FLING!

803 South
Thurs., April 20, 9:00-1:00

Donations go to the Ephraim McDowell Cancer Network.

Advertising Director
Anthony Gray
158-871

Ad Production Manager
Diana Markzade
268-184

Production Manager
James Lewis
284-118

The Kentucky Kernel, 114 Journalism Building, University of Kentucky, Lexington, Kentucky 40506. It is mailed five times weekly during the year except during the summer months, and weekly during the summer months. Three class postage paid at Lexington, Kentucky 40511. Subscription rates are mailed \$2 per year or one cent per year non-mail.



HORSEBACK RIDING

\$4.00 per hour & Hay Rides

Open 7 days a week. 9 'til dark

Richmond Rd. 1/4 mile past New Circle

WAGON WHEEL RIDING STABLES

SUPERSIZZLE!

SUPERSTEAKS \$4.25 NOW ONLY

Terriald or Western style. It's the best Steak Bargain in town! REG. 14.95

INCLUDES Steak, French, Texas Toast, Onion Ring Garnish and Tossed Salad.

WHERE THE GOOD TIMES ARE FOUND!
233 Southland Dr. Lexington, Ky. 276-1029

258-4616

In the number to call for information about the best real estate service on campus, the normal classified section. The deadline for classifieds is noon, one day prior to publication.

classifieds

Rates

CLASSIFIEDS	PERSONALS
1 day, 12 words or less, 85 cents	1 day, 12 words or less, 75 cents
2 days, 12 words or less, 75 cents per day	2 days, 12 words or less, 65 cents per day
5 days, 12 words or less, 65 cents per day	5 days, 12 words or less, 55 cents per day
10 cents extra per word per day	

for sale

1980 DODGE POLARA alt. dependable transportation. 800. 805. 25-412 ext. 3474. 24hrs. 267-7975. 1A20

1972 VW BEETLE for sale 260-4124. 1A20

1977 HONDA Civic standard auto radio new tires book value \$2300. 273-7114. 1A20

1971 KAWASAKI 75 CC. 500 miles, excellent running condition. Best offer. Call 82-9024. 1A24

1974 FORD ECONOLINE Van very good condition. 200000 miles. 9 a.m. or night. 253-3424. 1A20

1974 DODGE CRAIC 2712 Dodge high level. Like new. 284. call 256-4228. 1A21

FLEASER TYPewriter Neko-Data All system. Truck available. Independent. L.L. Best. 265-2078. 1A21

1974 HAT 315. low miles great shape. Book value at \$1000. First offer over \$1200. 253-3440 after 5pm. 1A20

FOR SALE: 1966 Oldsmobile, 2 door, gold with black vinyl top. Excellent condition. 800 or will trade for jeep or van. Call 253-3424. 1A20

1974 VW BUS, new warranted rebuild engine, best offer over \$500. 262-9715. Offer to see Ed McCannan. English. 262-9715. 1A21

1974 Dodge sportsman. Must sell. Great buy for conversion. 85-4882. 1A21

MATCHING COUCH chair excellent condition. 815 call Betty 266-2717 or 254-2005. 1A21

1974 STAFFER Oldsmobile excellent condition. extra AC. PS 258-2991. 1A21

1980 TRUMPF TR4. Classic sportscar. Excellent running condition. Asking \$1700. 273-2368. 267-2977. 1A20

1974 VEGA Hatchback automatic new engine looks great 880. 277-2362. 1A20

1974 MERCURY Capri alt. str. \$2200. Best offer. 253-2889 after 6. 1A21

1974 MORRIS mini 1086c clean 2000. 253-2727 or 257-2004. 1A21

FENTAL SPHINX with 50mm D. camera. Trip. 266-7833. Good deal 253-6139. 1A20

ERENT track car player with speakers and power amp. small portable. New with tape deck call 768-7283. 1A21

FOR SALE: Labrador Retriever 10 weeks old, wormed, 14 lbs. housebroken. Call 253-3440 after 5pm. 1A21

FOR SALE: 1969 Ford Mustang. Speed. 20-000. 480. 480. after 6. 1A21

1974 VW SQUAREBACK. Top condition. Station wagon. Interior. 8000 miles. 279-2828. 1A20

"YEAR OF THE CAT" color prints. \$3.95. 2000 and numbered. 279-2800. 1A20

TAMARA 80 cassette. plus. great price. perfect condition. 253-20-000. 1A21

lost & found

RECEPTION-Secretarial: Congenial assertive person to answer phone, type, file, take dictation. 276-4247. 1A21

ARBY'S ROAST BEEF 232 Southland Hwy. 4 units. 24-hour operation. Part time help. 2 or 3 nights a week. Please contact Bill Rhodes or Ronnie Boucher. 262-2424. 1A21

PAINTER, experienced only. Reference available. Full and part time work for students. 260-40-16pm only. 1A20

FOR RENT: 1000 miles, run good. 204-4487. 267-7808 key trying. 1A21

1974 HONDA Civic. Excellent condition. Above low mileage. 272-8008. 1A21

1974 VW BEETLE. Good shape all over. 8000 miles. Good Karma. 25-30 mpg. Call Mike 263-7994. 1A21

HONDA CB350. 6-speed transmission. beautiful condition. Best offer. 272-2388 ask for Mark. 1A21

SPRINKLER 1/2. Pumps. Goodhold. Type. 2000. 253-3424. 1A21

MAVERICK 6. 2 cyl. 2-door Sedan. green. \$1500. Call 257-2808. 1A21

1974 HONDA CR800. Electric start with extra. 2000 miles 1973 or Best offer call 267-7994. 1A21

FULL AND PART time help cooks and millage people. Apply Joe Bologna's at all locations. 1A21

ARE YOU a night owl? You could earn extra money with a part time job in our 24-hour restaurant, The Bittersby. Apply to person. Hospitally Inn. 2143 N. Broadway. No phone calls. 1A21

BREAK THE Hamburger Habit at Arby's! Best part time full time spring & summer help available. Flexible hours call 253-2266 for interview. 1A21

DARRYL'S 181-100. New living cook w/extra-wellness. Homeless. 266-7808. 1A21

FOUR GUIDES wanted for part time and some full time work. Preferable and must be people and have a good driving record. Positions available immediately telephone: 266-4123. 1A21

A CONVENIENT OPPORTUNITY for: Manpower Temporary Services has a variety of short and long term assignments which can fit into your schedule. Immediate openings. Industrial, data processing and light industrial assignments. Manpower Inc., 2000 Regency Road off Southland Dr. 25-1118. 1A21

OVERSEAS JOBS—Summer-year round. Europe, S. America, Australia, Asia, etc. All fields. \$500-\$1000 monthly. Expenses paid. Lighthouse. Free information Write: BHP Co., Box 496, Dept. KD, Berkeley CA 94704. 1A21

TO THE GAMMA PSI Beta chapters. You're the greatest! From the actives. 20-20. 1A21

PENNY. Just received an album by Boney. You must have something. Roman Numerals A. 26-20. 1A21

LENNIE HAPPY 22nd. Love Me. Love Me. Call. 26-20. 1A21

W. HAPPY 21st. Do you feel old now? M. 26-20. 1A21

CHEN-NOVA. A scarf. good time on your 22nd Birthday. Love 27. Birthdays. 26-20. 1A21

roommate wanted

FEMALE share apartment for summer. All lease available, near campus. 262-2715. 1A20

ROOMMATES WANTED for summer. House at 148 Linden Walk. 253-0618. 1A21

ROOMMATE WANTED: Person to share 3 bedroom house call 260-2087 for details. 1A21

FREE. FOUR weeks rent! Two bedroom apt. available last two weeks May thru first two weeks August! You pay half June, July and \$95 a month 260-4026. 1A21

ROOMMATE NEEDED by May 15 close to campus. Own room. 807 or monthly utilities call 254-2628. 20-21

ORIENTAL Foods & Gifts

276-2013
357 Southland Lexington, Ky. 40503

GLENN LIPTON—Your voice in Student Government. Vote Senator at Large. Today. 26-20. 1A21

BICYCLES new and used. full service available. any make. Everybody's Bike Shop. 68 E. High St. of Woodland. 222-1744. at Raleigh Presbyterian. 1A21

YOUR VOTE will make a difference in your candidate and in your school. Vote today in your Student Government Elections. It means more to your future. 1A21

ATTENTION AD members. Officer nominations will be held at meeting Thursday, April 20, 7:00 pm, Room 112 Student Center. Budget plans will be announced. 1A21

THE YOUNG DEMOCRATS wish to invite all members and guests to a meeting Thursday, April 20, 7:00 pm in Room 107 of the Student Center. 1A20

VOTE TODAY in the Student Government Elections. Support someone who can really make a difference. Glenn Lipton for Senate at large. 1A20

help wanted

1974 STAFFER Oldsmobile excellent condition. extra AC. PS 258-2991. 1A21

1980 TRUMPF TR4. Classic sportscar. Excellent running condition. Asking \$1700. 273-2368. 267-2977. 1A20

1974 VEGA Hatchback automatic new engine looks great 880. 277-2362. 1A20

1974 MERCURY Capri alt. str. \$2200. Best offer. 253-2889 after 6. 1A21

1974 MORRIS mini 1086c clean 2000. 253-2727 or 257-2004. 1A21

FENTAL SPHINX with 50mm D. camera. Trip. 266-7833. Good deal 253-6139. 1A20

ERENT track car player with speakers and power amp. small portable. New with tape deck call 768-7283. 1A21

FOR SALE: Labrador Retriever 10 weeks old, wormed, 14 lbs. housebroken. Call 253-3440 after 5pm. 1A21

FOR SALE: 1969 Ford Mustang. Speed. 20-000. 480. 480. after 6. 1A21

1974 VW SQUAREBACK. Top condition. Station wagon. Interior. 8000 miles. 279-2828. 1A20

"YEAR OF THE CAT" color prints. \$3.95. 2000 and numbered. 279-2800. 1A20

TAMARA 80 cassette. plus. great price. perfect condition. 253-20-000. 1A21

for rent

EFFICIENCY apartments for summer and fall term on Rose Lane. Air conditioned. \$150 per month \$6-11. 1A20

SEBRIDGE for summer. 3 bedroom house. garage. 265-7900. 1A20

FOR SUMMER one bedroom furnished. furnished near UK. 253-6811. 1A21

AVAILABLE MAY 1st furnished apartment close to campus females only call 260-4021. 1A21

SUBLET: FURNISHED 2 bedroom. June-Aug more or less. close to park. 260-4008. 1A21

TWO ROOMS available. \$60.00 and \$80.00. Upper Classroom preferred. call 253-2266. 1A21

THREE BEDROOM and 4 bedroom furnished for rent starting May 15. Close to UK. no pets call Mr. Cowgill after 5pm 260-4021. 1A21

FURNISHED ROOMS at 220 Transylvania. 24hr. for summer. Lease and deposit. 253-7474. Prefer male students. 20-20. 1A21

SUBLET SUMMER. nice 3 bedroom furnished apartment. utilities paid. 2 blocks campus. no pets. 257-1286. 253-0933. 1A21

NEW—NOW LEASING Aspen Apartments. Located at Woodland. Next to UK. One bedroom adults no pets. Deluxe features include: split air systems and complete security systems. \$245.00. 253-7085. 20-24. 1A21

STEREO REPAIR—Fast, expert service with all gear guaranteed 269-2099 between 6-9pm. 1A20

PROFESSIONAL AUDIO Repair and Service convenient to campus O.H.S. 266-4123. 1A21

ALTERATIONS (major or minor) 252-3188 ERNIE DRY CLEANERS Imperial Plaza 293 Walker Avenue Lexington, Ky. 1A21

ALTERATIONS (major or minor) 252-3188 ERNIE DRY CLEANERS Imperial Plaza 293 Walker Avenue Lexington, Ky. 1A21

ALTERATIONS (major or minor) 252-3188 ERNIE DRY CLEANERS Imperial Plaza 293 Walker Avenue Lexington, Ky. 1A21

ALTERATIONS (major or minor) 252-3188 ERNIE DRY CLEANERS Imperial Plaza 293 Walker Avenue Lexington, Ky. 1A21

wanted

BOYS'GOUT LEADER wanted to be scoutmaster for Troop near UK. For more information please call Division of Neighborhood Services 253-2681. 1A21

RENTAL AGENT, weekends only. 151 Todd Rd. No phone calls. 1A20

ATTENTION NEEDED by Male, Physically handicapped graduate student. This has a work. Room \$100 monthly. 262-9977. 1A21

GRADUATE STUDENT in Electrical Engineering with Microprocessor experience. Needs job. Masters degree in Physics. Teaching experience. 253-0997. 1A21

SIX FOUR OR TALLER? College basketball center or forward? Like to travel? The Ohio Scouter Basketball Association is seeking 3 athletes to play with their teams for 6 months. Start immediately through the summer. Transportation, all expenses, plus monthly stipend. Interested? Contact: Mark Malone, Kentucky Scouter. 269-8774. 100 Reading Rd. 1A20

WANTED: STUDENTS who are interested in making money. Call 272-4603. 1A21

TEACHER RETURNING to graduate school seeks large unfurnished room near campus. 259-0778. 1A21

misc.

RITZ Old clothes trunks tables chairs, cradle. Rear Me. 262-1423. 3-4 weekdays. Room 613. Main. 1A20

HILLEL PANOVER. Seder Sunday April 23. 8:30 pm at Temple Adas Israel. Only \$2.50. Call 254-6174 for reservations anytime but after 6:30pm Friday because of Alter's Seder. 1A21

LEAVE THE RUNNING TO US!

... running classifieds that is!

When you decide to RUN that classified think of the KERNEL first.

KENTUCKY Kernel

Students file parking complaints

By MEL HOLBROOK
Kernel Reporter

The UK Handicapped Student Union has registered complaints about handicapped-designated parking spaces on campus and at Lexington Center being oc-

cupied by non-handicapped drivers.

According to Dick Cambron, HSU president, handicapped parking spaces in the civic center lots are "non-existent."

Gene Tichenor, Student Affairs chairman for Student

U Senate makes changes

Continued from front page
Currently, graduate students can be terminated only through three semesters of academic probation, failure to be admitted to candidacy, or inability to successfully pass the examinations in the program in two attempts. (The two exams are the final examination for the master's degree and the qualifying examination for the doctorate.)

The council also unanimously approved a Law School proposal to create a new course called Employment Law. Council Chairman Paul Oberst said

the course would not overlap an existing Labor Law course dealing with labor negotiations and collective bargaining, but will contain topics such as work production, worker liability, and pay issues.

Another Law School proposal adds one credit-hour to a Criminal Procedure course. Oberst attributed this proposal to the changed State Criminal Law Code. He said the course content increasingly includes constitutional as well as criminal law. The credit for the Criminal Procedure course increases from three to four hours.

Government, said the UK Parking Committee is working on a solution to the problem on-campus.

"We're trying to get the Parking Committee to consider raising the fine for parking tickets for people who occupy handicapped spaces," Tichenor said.

"Right now the fine is \$5 for a ticket and \$15 for a tow — \$20 in total — but we want to make the fee \$25 for a ticket (in a handicapped space), costing violators \$40. People would think twice about it before they parked in a handicapped student's space."

"We're waiting for the committee to meet and discuss our recommendation. Right now it's just a wait-and-see situation."

"The Lexington Center Corporation claims it doesn't have the manpower to guard these spots, and the police aren't allowed to tow the cars because the parking lot is private property."

Tom Minter, civic center executive director and

general manager, said, "We've had a difficult time with violators. The problem of parking is more of the general public's concern and not only the handicapped's problem."

"We originally planned 2,000 parking spaces but we have constructed only 600 of them. We plan to start construction in 30 days on a new parking lot north of the center on High Street. This new lot will double the number of handicapped spaces and triple the number of public spaces."

Minter said he is working with Urban County Council members to try to get an ordinance passed that would change local law.

"This new ordinance would make it possible for police to patrol private lots," he said.

"But the problem with this would be that other owners of privately-owned lots would want their lots patrolled, too. The police force doesn't have enough manpower to handle that."

KERNEL CLASSIFIEDS WORK WORK WORK!!!

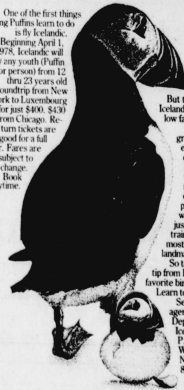


Talking books

Kathy Taney, left, who is legally blind, is coordinator of recording services at UK. She is instructing volunteer Starr Dittert in the use of recording equipment in a soundproof booth in Alumni Gym. The equipment is used to produce "audio textbooks" for blind students.

The Puffin fare for youths.

One of the first things young Puffins learn to do is fly Icelandic. Beginning April 1, 1978, Iceland will fly any youth (Puffin or person) from 12 thru 23 years old roundtrip from New York to Luxembourg for just \$400. (\$430 from Chicago. Return tickets are good for a full year. Fares are subject to change. Book anytime.



But there's more to Iceland than just low fares.

You'll get a great dinner and excellent service on your trip. And Iceland will set you down right in the middle of the European Continent, where you'll be just hours away by train from Europe's most famous landmarks.

So take a travel tip from Iceland's favorite bird.

Learn to fly Icelandic. See your travel agent. Or write Dept. #4302, Icelandic Airlines, P.O. Box 105, West Hempstead, N.Y. 11552. Call 800-555-1212 for toll-free number in your area.

\$275

Roundtrip 14-15 day APEX fare from NY*

\$400

Roundtrip Youth Fare. Good thru age 23. Icelandic to Europe

*\$20 from Chicago. Tickets must be reserved 45 days prior to departure and good for return dates of one year. Add \$15 each way for taxes on weekends.

Mountaineering #1.

FUNDAMENTALS OF MOUNTAINEERING

What is mountaineering all about? Funny you should ask. Because we just happen to have an answer. (Ah-h, life's little coincidences.) Mountaineering is a skill, a science and an art. Yet anyone with a thirst for excellence and normally developed motor skills can master it. Simply study these fundamentals and follow them, faithfully.

1 Step one, appropriately enough, starts by selecting the correct site. To do so, pick up a bottle of Busch. This is commonly called heading for the mountains.

2 Okay, here's where the fun begins. Hold the mountain firmly in your left hand, grasp the mountain top with your right hand and twist the little fella off. There you go.

3 Now for the tricky part. Neophytes, listen up: the proper pour is straight down the center of the glass. Only in this way will the cold, invigorating taste of the mountain come to a head.

4 Once poured, pacing becomes paramount. As any seasoned mountaineer will tell you, the only way to down a mountain is slowly, smoothly and steadily — savoring every swallow of the brew that is Busch. If you're a bit awkward at first, don't be discouraged. Perfection takes practice. Soon enough, having emptied your glass and filled your soul, you too will be a mountaineer.



Fig. 1 Before Mountaineering

Fig. 2 During Mountaineering

Fig. 3 After Mountaineering



Don't just reach for a beer. **BUSCH** Head for the mountains.



Fashions

Supplement to the Kentucky K... April 20, 1978



The College Man

They're looking their best and feeling good, in casuals from McAlpin's Men's Shop.

A. (left)

100 percent pre-washed denim fashion jeans. 28-38 \$19.
Terry cloth shirts. S,M,L,XL..... \$17.

B. (right)

Brushed denim jeans, front pleat. 28-38..... \$22
Poly-cotton knit shirt in contrasting colors.
S,M,L,XL \$10.99

The College Woman

Outdoors or in class, look fresh and cool in casuals from McAlpins Junior Department.

A. (left)

Separates by Bronson of California.

Brown and white belted shirt. 5-13..... \$16.
Tube Top..... \$6.
Button front skirt with split. 5-13..... \$22.

B. (right)

100 percent cotton separates by the Strawberry Plant
Nehru shirt, natural and blue strip. 5-13..... \$37.
Slacks. 5-13..... \$34.
Embroidered shirt. 5-13..... \$22.
Matching skirt and shorts available.



Turfland Mall
Harrodsburg Rd.
Lexington, Ky.

McAlpin's

Lexington Mall
Richmond Rd.
Lexington, Ky.

Supplement to the Kentucky Kernel

Fashionality

spring and summer Forecast '78

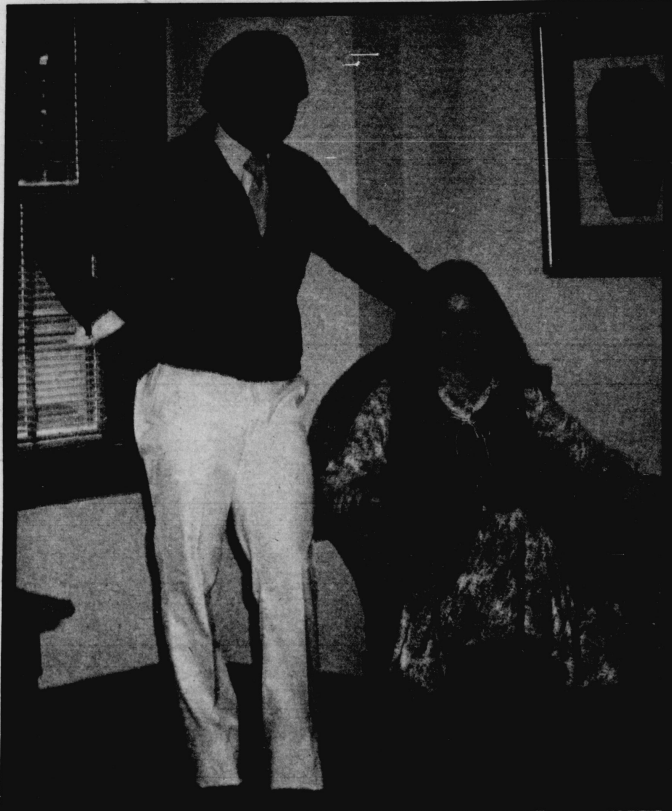
Fashionality - express yourself	5
Marty Baldyga	
Spring and summer forecast	18
Marty Baldyga	
Men's trends	14
Marty Baldyga	
Profile of two chic UK students	8,9
Mary Ann Buchar	
Back to basics	4
Marty Baldyga	
Clinch the job	12
Jennifer Greer	
Wave lengths	6
Marty Baldyga	
Anthony Gray	Director
Mark Carroll	Advertising Director
Diane Harkrader	Production
Marty Baldyga	Editor
Ronald Cason	Photographer
Michael Mac	Artist
Suzanne Kellar	Fashion Coordinator
Cover fashions provided by McAlpins Men's and Junior departments McAlpins Lexington Mall Turfland Mall	



Suzanne Kellar
Fashion Coordinator

Step Into Spring With Bear Traps
 With soft leather uppers and stylish wood and crepe bottoms, Bear Traps are a stylish yet comfortable addition to your Spring and Summer Wardrobe. See the Bear Trap collections at any of Wenneker's four Lexington locations.

wenneker's
 East Main Street
 Turfland Mall
 Fayette Mall
 Lexington Mall

The POINT AFTER
 In the Lansdowne Shops

Mendy's fashions are by Body English. Dallas is wearing a Ferrer y Sentis velour evening jacket, our designer exclusive. His shirt is by Geoffrey Beene.

Molding a wardrobe takes flexible clothes

Component parts add up to an easy way to maneuver your closet. When trying to mold an interchangeable, complementary wardrobe a good approach to fashion is based on separates. Active people may have to go all day in the same outfit, so flexible clothes are important.

Skirts look good when loose and easy, and dirndls are the single most popular style. Slimmer skirts are pleated falling to below-the-knee or midcalf.

Pants are simply shaped with pleating at the waist, fullness through the hips and tapering at the ankle. Many pants stop short at the ankle and some are cuffed, buttoned and tied.



emphasis on physical education and "active" looks shorts are coming into their own as fashion items.

There's a smattering of shorts—from tiny and light to flaring around the knee. Two basic styles that have emerged are the utilitarian bermuda in cuffed longer lengths and the short cut. With the narrower minded long pants, the natural evolution is to go into short shorts. People became so accustomed to seeing joggers in shorts that they are acceptable as street wear. These playpant are big in rompers, boxer shorts and bloomers. The shorts crop for summer gets suspenders as well as high waists for slick city wear.

The T-shirt is the backbone of any wardrobe. Charcoal black and bright white are perennials.

"Hot Stuff"

When the heat's on it's the Bare Minimum in the hot selling sundress. It can be doubled up with shawl-collared jackets, skimpy boleros, relaxed shirts and boxy vests. You can find it in every imaginable combination of prints and solids; in fabrics from voile to flowing interlocks; detailed with pleats,

ruffles, embroidery, braid, laces, tucks; strapped with ties, suspenders, or spaghetts.

The taste for textures
 Continued from page 13

"Investment Dressing"

Put your fashion dollar on the line for long-term gains instead of diminishing returns in a vest that can be teamed with anything. A winning combination is a blazer with a vest. Vests are reversed to and backed by stripes, checks or foulards.

The blazer if a Trailblazer is cut spencer short, to-the-waist, or three-quarter length. The blouson or streamlined Big Shapes are single or double breasted and shawl or notch collared. Jackets and blazers button lower this spring. Shoulders are lightly padded and a narrow waist is always marked. Keep your eye on the narrow lapels and collars.

Dresses go schoolgirl or innocent. Whether flounced or tiered the classics are the shirtwaist and the wraparound. This season one and two-piece dresses are teamed with a matching or coordinated coverup or jacket for cool evenings.

"Playing Short Stop"

Shorts are in full swing for summer—bare-legged or paired with lightweight cotton stockings. As a consequence of increasing

Display your individuality by mixing textures, colors

The fact that novelists frequently describe the appearance of characters in minute detail relates to the predictive value of appearance in human relations. It conveys ideas about the bearer of the given look and sets the expectations of the onlooker.

A well dressed man or woman asking directions is likely to receive more spontaneous and speedy service than someone not putting forth any forethought into their adornment. The impact you make and the overall impression you leave is dictated by the Gestalt, the total look, of which dress is a viable part.

Fashion, like dance, is a universal language. Someone without any training can surmise whether the dancer was effective or if the outfit worked.

That stylish air is easily definable visually yet intangible. Taste in fashion implies a sensitivity to what is artistic and how to create a unique identity out of the mundane, even to the point of deceiving the eye of the beholder. The tricks you can play, the shapes you can contrive, the coverings used or discarded are reflective of the individuals' instinct, insight and intuition.

Your genius can be displayed by the way you mix textures, colors and fabrics. Variations in detail (trimmings, skirt length, or shoulder, waist and sleeve treatment) offer consumers unlimited opportunity to express Fashionality, although most don't stray far from the framework of an accepted silhouette.

Chemin de Fer, a Los Angeles based jeans house that sometimes produces 7,000 pairs of jeans a day has gained notoriety as being one of the most famous jean labels in

California. Chemin, perhaps more than any other jeans maker, has perfected the personalized stitched back pocket which Chemin says reflects individualized personality.

Texture can modify appearance by making the form appear bulkier or more slender, depending on the roughness or smoothness of materials used. It affects the drape of a garment. Chiffon clings and flows while corduroy is stiff and bulky.

Color is a dominant factor in apparel selection for both sexes, since it is part of the packaging. Colors have historically denoted rank and profession. Purple was associated with royalty and at some periods could only be worn by those of noble births. White is the Western World's symbol of purity, worn by brides and used in communion dresses. Black is traditionally the color of mourning and that donned by the clergy.

Several investigators have produced support for the old adage "clothes make the man." In one study it was found that the evaluation of men in photographs could be altered by changing their dress. In other research two college psychology teachers each came to their first classes wearing the black suit and Roman collar of the catholic priest. For another class the same teachers wore coats and ties. When asked to give their first impressions of the teachers, the classes to which they had worn priestly dress rated them as significantly more moral, reputable, unusual and also more withdrawn, than the classes to which they had come in regular dress.

Nine weeks later one of the teachers was rated again. The class to which he had worn priestly dress rated him significantly

more introverted, solitary, unscientific, self-contained and discouraging than the class where he wore a coat and tie. The effect of clothing on impressions did not disappear over time. It would be interesting to know whether the dress stereotypes had remained in the students' minds for nine weeks or whether the teacher actually behaved differently when dressed in discordant attire.

There are mental effects linked to a change of clothing. It's a stimulating effect to completely change your clothes. After a hard day of disappointment and defeat the sensation of being a renewed person emerges.

Clothing is a signature one wears. Designer Sonia Rykiel's personal look is a black marabou overcoat topped by a sleeveless knit vest, black culottes, a typical black clingy sweater and two gold

Continued on page 19



FASHIONALITY - U.K.

Michael Mee 78

Colorful Coordinates For Spring

This spring and summer season, let the Missing Link dress you in style with tasteful and colorful outfits. From Levia's and Wild Oats. Such outfits as Ellen's white slacks, pegged at the ankles with matching Levia shirt and Ron's Wild Oat's jeans will outfit you for the warm weather.

**Missing
THE Link**

136 Southland Drive

Michael Mee





Swimwear

Wave lengths

Taking the plunge

Getting on this season's swimwear wave length means surfacing with the new sleek maillots, getting back on the bikini bandwagon and incorporating the newest accessories and coverups.

Several trends have been spotted in swimwear collections in the never-ending conversation between clothes and body.

The one-piece suit is still in the lead on the fashion front. The latest maillots are cut high on the thigh to bare lots of leg and a portion of the lower hip and might be strapless as well. The silhouettes feature easy drawstring pull to adjust the Leggy Looks. Front-zip maillots open and close to reveal lots of skin. Sleek shapes include the subtle sweetheart U-scooped or plunging V-neckline. A few suits have tiny capped sleeves for a leotard look that is totally impulsive.

Last season's offerings included touches of glitter and mylar, not so for 1978. Instead, watch for drawstring and shirred

waists, peasant necklines, cut-out sides, ruffled camisole body suits, one-shoulder basics and removable spaghetti or criss-cross back straps. Other versions to zero in on are the racing tank suit and the side shirred draped blouson.

Psychologists tell us we breathe and hear with the epidermis. Marshall McLuhan in "Understanding the Media" conveys the idea of clothing being an extension of our skin. Your clothing translates your sense impressions.

There's nothing between you and the world but your swimsuit so put yourself on the Body Conscious Wave Length in Antron Nylon-Lycra Spandex for extra control. Although this is the key fabrication there are sprinklings of polyester pongees and 100 percent cotton cropping up now and then.

Briefer look

The rising star in the swimwear category is the European-inspired un-

Continued on page 7



Best Bets

The Keeneland outfit from Casual Corner. The Traditional styled blazer by J.G. Hook comes in Kelly Green. Combined with navy slacks, it's the odds on favorite for an afternoon of racing. With reinforced felt-lined lapels and hand-tied pearl buttons, the jacket is made of 35 percent cotton and 65 percent polyester.

The look is topped off with a 100 percent cotton madras shirt and accessorized with chains by Napier. Renauld sunglasses and shoes by Diesse.

With the diversity of fashions from Casual Corner, you're playing the favorite.



casual corner
Fayette Mall

From Board Meeting to Racetrack

Now about this three button Madras blazer by Palm Beach.

Retail \$95.

Top it off with poly-wool navy slacks by Corbin.

If the order of the day is business, picture yourself in this three-piece plaid suit.

The men's store for every occasion.



136 West Main Street — Lexington, Kentucky 40507



paul harris
Fayette Mall

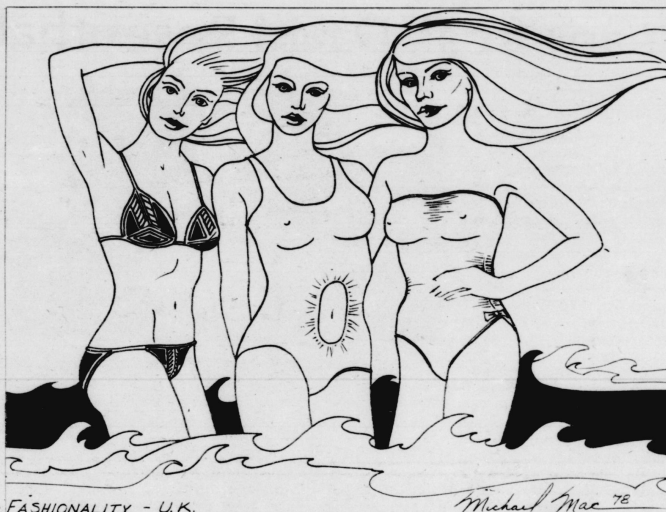
Swimsuit trends feature maillots, return to bikinis and terry fever

Continued from page 6
 constructed maillot. Of that, the tubed bandeau is popular which is a narrow rectangular piece of material worn around the top. It might have a keyhole cut out on one side so you can wear it either in the front or back. With the return of the bikini after a few seasons' neglect, there's renewed fashion stress on the bare String. The newest ones have soft shirring details or front V'd bottoms and come in solid colors or engineered prints combining geometrics and flowers. The mitred or chevron look and Leopard print are noteworthy.

Emphasis is on mid-summer darks and toned-down fashion colors including deep parma fuschia — and lots of black. Slinky silhouettes are shaped in the figure-8 and nipped-in bra.

There's plenty of fanfare when it comes to this season's beach coverings:

Lots of effortless coverups stand on their own and portray fashion multiplicity including convertible skirts-to-dresses, Big Shirts, fringed or ruffle-edged shawls doing Double Duty as skirts or shoulder wraps. The Caftan dress and Sari are prominent pool accomplices. The tissueweight voile Swim Shirt is gaining momen-



FASHIONALITY - U.K.

tum as a protective device against the sun's unmerciful rays. This Big Smock enjoys added dimension when floating over skinny pants and full skirts.

Terry fever is storming

summer loungewear, and it's taking a step in the white direction, whether in track shorts or beach coverups. Front and side-slit cotton tunics have clout at the cabanas. Chamois, like silk, is

making a year-round appearance especially in tunics that are smashing in the new shortie Daring Daytime Dresses, or can be worn over skirts, jeans or a swimsuit. "Over and Out"



A Tierful Story

Tiers are an important component in the billowy loose look that is so evident in 1978's Spring Summer fashion scene.

Our two models in the middle are wearing delicate prints with tiered skirts. Chris on the left has a strapless camisole combined with a three tier fully lined skirt from Ragtime. Shelly on the right has on a one-piece, off the shoulder tiered sundress in a blue floral print design.

Susan on the far left is donning white straight leg trousers with draw string waist by Jean Nicholas.

Leslie on the right is also showing the straight leg with pleated trousers from Happy Legs. Her outfit is topped off with scarf and belt from Anne Klein.

Hymson's

Downtown and Turfand Mall

Jeans freak David Rosenthal tries to shun fads

By MARY ANN BUCHART
Kernel Staff Writer

David Rosenthal thinks about the way he dresses because it runs in the family. His father and brother are in the men's clothing business in Winchester.

"It's something that's hard for me to avoid. I was just brought up in that environment," he says. "I've never owned top-siders or khakis because I don't want to be another book on the shelf. You don't have to dress 'way-out' to be noticed. You can look nice in something that's common, if it's put together well."

A business administration senior, Rosenthal describes his style of dress as a cross between conservative and faddish. "I'm not really conservative, but I don't buy faddish things because they're the fad. I just happen to like them sometimes."

He said he does keep up with the fashion trends because he notices what people wear. "I also read *Gentleman's Quarterly* (a national men's fashion magazine) in order to get



ideas. I don't dwell upon wanting to be a showpiece," he says. "I just want to look nice, not necessarily stand out."

Rosenthal thinks there is a reason why Lexington seems to be so slow in following the fashion trends. "A lot of people joke about how traditional

the dress is in Lexington. But you have to look at the differences in population between the fashion-setting cities and Lexington, New York and the others have so many more people that the diversity is greater. And the fashions originate in

those cities, so naturally they have to start trends."

Casual campus dress makes sense, he says, because it's so functional. "The majority of the people on campus dress for comfort. They don't try to look outstanding and that makes sense for everyday wear. Plus, when people do get dressed up, they get more excited about what they wear."

When it comes to Rosenthal's basic dress for class, he describes himself as a "jeans freak." His closet need hold only a few pairs of jeans and a lot of shirts, he says, although he has all kinds of outfits. "I have a lot more shirts than slacks mostly in blues, whites and off-whites. Those are my favorite colors."

The manner in which others dress affects his clothing selection, Rosenthal says. "I see what looks good on other people and then I decide whether it's something I'd like to have and would use. Otherwise, if I'm shopping, I just walk around and see if anything catches my eye. I generally go shopping, though, with something in mind."

When selecting clothes, he does keep certain points in mind. "I'm not big, so I don't really have much to worry about, but there are things that I can buy that others could not. For example, I always wear three-piece suits, which bigger men could not wear. I don't usually need to worry about buying certain colors or about plaids, but I do favor lighter colors, especially when I have a tan. I wear a lot of blue also, because my eyes are blue."

Fashion trends are changing, though, so that men's and women's clothes are getting to look more alike, he says.

"Women are now wearing suits designed like men's and men are wearing shirts that used to be restricted to women. I think this is good. We don't need a stigma attached saying who should wear what."

Rosenthal gave his forecast for fun in the sun.

"This summer, there is going to be a lot of drawing lightweight pants for both guys and and girls. Also there will be a lot of lightweight clothes that will look good as well as feel good."

Leisure at the Ranch

Dallas is at his favorite leisure in a chemise et cie silk shirt and Angel Flight pants by Tobias. His friend is cool and laid back in a white peasant dress by Young Edwardian.



The Ranch
Fayette Mall



Paula Powell demands quality and versatility in the clothes she buys

By MARY ANN BUCHART
Kernel Staff Writer

The consensus among Paula Powell's friends is that she represents the epitome of fashion consciousness, a label she modestly downplays.

"I don't really think of myself that way, but I do consider my appearance to be important. I guess that I just never thought of myself in those terms."

Powell described her mode of dress as "half-way conservative. I try to stay away from faddish things. The quality is usually lower and it's usually good for only part of a season."

A textiles and clothing merchandising sophomore, Powell said she does keep up with the trends. "I like to keep up with what's going on because it's interesting to watch what trends are being set, even though the New York styles don't always carry down to Kentucky. I would like to dress more with the trends, but you do have to conform to a certain extent to what being worn around you. People who dress like Vogue look out of place on campus."

"People at UK dress like everybody else on college campuses. It seems like topsiders, khakis and button-downs are the

basics, but there is a lot of diversification."

She said she tries to keep some basics in her wardrobe at all times. "I buy basics around a central color scheme. Sometimes I buy coordinates, sometimes separates and I always have a couple of basic suits to work around. Classic items are always your basics — I mean, plain blouses, a couple of skirts and a dress that will go for just about anywhere. And you can't forget jeans when you're in school."

"I also build my wardrobe around a basic color for the season. This winter, I had a lot of browns, tans and grays. For this spring, I mostly have kelly green. With a basic color, you can build up or down," Powell added.

When selecting clothes, Powell said, she watches "what's going on overall in fashion. I then decide what I want and need. I generally look for quality and versatility, not quantity."

Powell also has specific shopping habits. "I try to always know what I want to buy because if I don't, I will lose in the long run. I will waste a lot of time wandering around and there is a greater risk that I will buy faddish things or get pressured by the



salespeople into purchasing something that I don't really want or need."

Physical characteristics, such as skin color, also help her determine what she buys.

"I have a peachy undercolor, compared to some people whose skin color is pinkish. Pink and sometimes red clothes will clash with my skin color."

"Another thing is my size. I guess I'm lucky because I never have a problem with sizing or fit.

I try to stick with smaller prints and plaids because the larger ones make anyone look heavy. Solids are always good. I also try to wear less fuller styles, but that's hard these days with fullness being the rage."

As for the latest trends, Powell said, "Women's clothes are becoming a lot more feminine and dressy. They are soft, not as tailored, and the colors are not quite

as bright, but they are more natural.

"This summer, the skirt lengths will be long and really full with more tiers and ruffles. Disco is also trying to bring in the skinny pants. These have plats at the waistband and they narrow around the ankles. Another big thing this summer will be the dirndl skirts."

Dirndl skirts are a fuller version of the straight

Continued on page 19.



The Big Look

From Courtisan. For spring and summer 1978, Courtisan is showing big, loose tops with slim pants of 100 percent cotton in a full range of colors.

The tops are loose and billowy for that cool look of leisure in warm weather. The slacks are sleek silhouettes tight up top and pegged at the ankle.

Visit Courtisan and check out their unique fashion concepts for Spring and Summer 1978.



the mall
at Lexington Center





Spring Fever at **shillito's** FAYETTE MALL



Photo A:
All of the latest looks in cotton, gauze and muslin with all of the right accessories. All from Shillito's Junior Shop. Our guys are ready for the active scene in looks of linen, khaki and cotton from Shillito's Men's Shop.

Photo B:
Greg's super looking jacket is made of shiny satin with contrasting detail. And of course, our Annie Hall look with Linda's shorts, vest and tie. All of these outfits add up to the total look for Spring—and naturally it's from Shillito's.

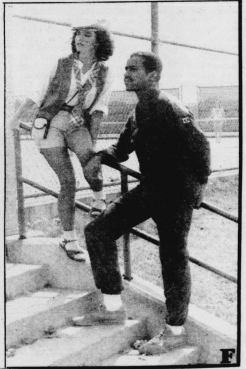
Photo C:
They're ready for Spring in Khaki and gauze fashions. Linda is cool and colorful in a feminine gauze blouse and long flounced skirt. Greg has on Khaki separates from Levi teamed with a colorful plaid shirt.



Photo D:
Show off your summer tan in this white strapless muslin dress. The full blouse top is easy to accessorize with a colorful nylon fishnet scarf and a pretty spring flower.

Photo E:
Step into Spring with cool, vibrant colors, big, billowy tops and long, flowing skirts. Susan adds the final touch with a bright sash and a fishnet pouch. Nancy is ready for a day at the races in a casual vest with coordinating separates and narrow tie.

Photo F:
Glen is ready for the courts in this terry warm-up suit from the Racquetball Collection by Callina. Linda's layered look of vest, blouse, tie and shorts is perfect for a warm, active day.



Employers agree on importance of neat, well-dressed appearance among prospective job applicants

It pays not to make a big deal out over most things. Your job interview is a major exception. Consider this. Research by behavioral scientists has shown that "attractive and well put-together people are viewed as being more hireable and more likely to be successful at a given job than someone who is not."

Fair or not, that's the way it is. Three local employers interviewed last week confirmed this, maintaining that your appearance tells them a great deal about you — a lot of which, you may not want them to know. Thus, it's possible for an applicant to put together a real knockout resume, and if he or she doesn't look as good in person as they do on paper, the employer probably won't be interested.

"The key here is effort and common sense," said Tom Preston, a former newspaper editor who runs his own public relations firm in Lexington. "When an individual, who may be

very qualified, shows up in jeans or a skirt and a T-shirt, I would tend to think he or she is lacking in maturity, self-pride or wasn't really interested in the position."

"If an applicant doesn't make an effort to appear personally attractive to me — I mean a neat, well-dressed appearance — then he won't make that effort with my clients. Any businessman will tell you the atmosphere in their office is very important, if your clients don't like it, if it's unpleasant or unprofessional, they won't do business with you. That's why I insist that my employees be the kind of people that will contribute to a friendly, but business-like atmosphere."

Preston added that he thinks the way you dress is an obvious manifestation of your personality (something most employers are interested in) and almost always an accurate indicator of character qualifications. "I look to see if an individual's dress is ap-

propriate, watching for extremes. While appearance is by no means my number one criteria in evaluating a candidate, if there was something displeasing about the way a person presented himself, particularly his dress, I'll remember that too. The way I see it, why create a negative impression, when you don't have to." With jobs scarce, and competition stiff, it's just plain common sense to chalk up as many pluses as you can for yourself."

Pat Jones, of Snelling and Snelling here in Lexington, perhaps said it best. "You don't get a second chance to make a first impression." Ms. Jones is a technical counselor for the world's largest employment agency. She interviews people for a living and knows how important it is to "play it smart" when dressing for a job interview.

"The other day, a man came in to talk to one of our clients about an accounting job. he had on a



dark, three-piece suit with black shoes and white socks. When I mentioned the socks he said he hadn't even noticed. I wondered how he could not have noticed and sent him home to change."

Ms. Jones explained that most people don't realize how much of an effect their overall appearance has on the interview. "We've had prospective employers get a chance look at an applicant out a window or through a door, decide they don't like the way he looks and be suddenly 'unavailable' to meet with the individual."

That's why Snelling and Snelling insists that women wear a dress or skirt and men put on a coat and tie (there are exceptions) to any interview arranged through the company.

"Some people give me static about these requirements, saying they don't own a dress or a coat jacket. If they aren't willing to purchase or borrow these items I say, 'goodbye and good luck somewhere else.' Our reputation is built on the rate of applicant success," she said. "Besides, I work on commission. As a professional, I know the applicant must accurately project the image of the job

he wants in order to get hired. Companies depend on us to pre-screen; if someone doesn't look the part, I'm not even going to set up an interview. It would be a waste of everybody's time."

At the UK Placement service, where hundreds of students are interested every semester. Associate Director, Harry Jones, says the same thing only more emphatically. "Almost without exception we tell students to come as close to the business approach as possible."

Jones, who has been with the service for nearly nine years, said the "dating game" was the best analogy he could think of to describe what effect your appearance has on interviewers.

"They see you before they even talk with you and receive a good or bad impression (no matter how subjective) right off the bat. If it's a negative one, they're less likely to listen to what you have to say."

He cited a recent study among educational employers in which 80 percent of them said the interview went either uphill or downhill on the basis of

Continued on page 15

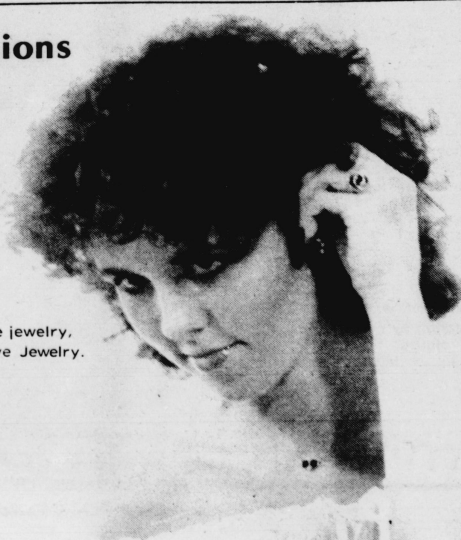
Onyx Fashions For Spring

Linda's finger bears a beautiful 14 kt. onyx and diamond ring. Her pendant is a coordinate to the ring, on a 14 kt. gold chain.

For contemporary fine jewelry, visit Goldrush Creative Jewelry.

Goldrush Jewelry

Lexington Mall



Jean-ology rules

Jeans have become uniform for thousands of people

Continued on page 4

this season is combined with an appreciation of openness and airiness. Clothes are soft and sheer and as fluid as water over the body.

"Jean-ology. Having a fit about jeans."

In the 1940's teenagers plunged into bathtubs in their jeans just to get the right fit. This effort is illustrative of the extent today's University student will go to so that a sculptured, girdle-tight fit

may be acquired. Those who once bought jeans as an antifashion statement are now being thrown into a frenzy finding the right fit and perfect cut that will most likely be breath-stopping snug. Jeans have become a uniform for thousands of people and the well-accessorized jeans look is more than acceptable at most trendy restaurants and parties and a must for campus life. Since blue jeans were started by Levi Strauss I recommend that your closet contain at least one pair of these in order to

score those, extra points. Invest in a maillot even if you don't go near the water. It can be the basis of your summer dressing adding a new look to shorts, skirts and pants. The single most important accessory item is the tie-bowed or knotted. Wrapped belts are a must. The flatter shoes are more in tune with the figure molding pants. Nothing equals the ease and versatility of dressing in separates and inventing new combinations each time you reach into your closet.

GOT A NEWS ITEM?

CALL 257-3152

Read the **KERNEL**





Interchangeable parts

The exciting "big shirt" look can be completely coordinated at the Limited. Layered dressing with teamwork outfits are a big stunning compromise between the big look and the slim down. The tunic is by Jones of New York and sells \$29. It is accompanied by the new look vest, short, big and open. Combined with straight leg slacks that are pegged at the ankle the look is topped off with the five foot madras tie.

the limited

Fayette Mall

Phillip Gall & Son For All Seasons

We've traded in all of our down jackets and pack shoes for a wide selection of warm weather attire to meet all your outdoor activity needs. Greg, for instance, is wearing Woolrich pants combined with a Coming Attraction shirt (100 percent cotton). We have a large selection of Spring separates in a variety of colors, all in men and women's sizes. While you're here, check out our outstanding assortment of totes and backpacks. Phillip Gall, your alternative to the catalog.

Visa, Mastercharge, American Express Accepted
Free Parking, with purchase, in Rainbow Lot

Outfitters to Outdoor People
250 W. Main Street · Lexington, Kentucky

to get
depend
een; if
ook the
going to
ew. It
ste of

cement
ndreds
erested
ociate
Jones,
ag only
cally.
ception
ome as
ess ap-

been
nearly
d the
as the
could
e what
arance

before
h you
or bad
matter
nt off
egative
ely to
ave to

study
em-
ercent
rview
ill or
sis of-
page 15

Stories have been told of spies who sold their old code sheets in the **KERNEL** classifieds

Wildcat Wear



from Kennedy's

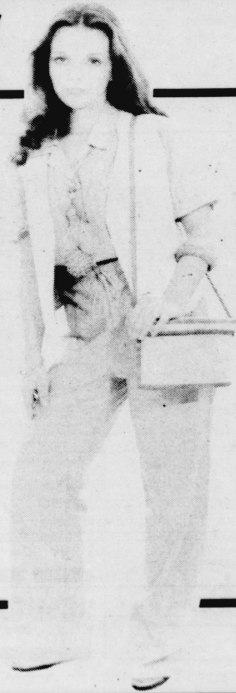
embry's/

Vested separates

How's this for teamwork? The matching shirt and pants by Trousers Up come in blue, rose and peach. The reversible vest comes in three combinations: cream-rose, blue-khaki and lilac-blue.

The outfit is accessorized with a shell necklace and binocular case.

See it at Embry's
141 E. Main St.
Fayette Mall



Easy look coming this summer for men as well as women

Pulling Weight Are:

The same outsize shape women continue to opt for, the loose and easy look, has permeated men's fashion. Headlining the bill is sportswear, with tops and bottoms generating the excitement. The roomy oversized top is paired with narrow trousers that either drape or start slim at the hip and continue narrowly down to a tight ankle. High waisted bubble pants look innovative when coupled with the short cropped spencer, once a favorite of the Duke of Windsor in his youth.

An interpretation of rugged, outdoor sportswear for an in-town life style is the unconstructed jacket called "office sportswear." It is complete with shoulder padding and a just-right boxier look while the pants silhouette has more volume at the hips and a comfortable higher rise. The thrust is toward the tapered leg. Makers emphasize the 19-inch knee and 18-inch bottom.

Sport coat makers are flirting with the classic feeling of impeccable tailoring. The center of gravity is lowered for a boxier, looser look like Jack Nicholson's attire in the 1978 Academy Award presentation or in his performance as J. Gittes in "Chinatown."

Lapels are narrow and pockets are lower. Look for loads of back detail. No rules apply to the vented—unvented; peaked—unvented; notched lapel or double-breasted—single-breasted (although single does appear more prophetic) controversies.

The fevered pitch of vested suits shows no signs of abating. Unique twists are the jackets with removable hoods (zipper and snap closure) worn over reversible vests epitomizing the survival look.

The short story on outerwear is the jean jacket. First featured in 1971 it remains just as

obvious on the ready-to-wear scene.

In the dress shirt department patterns are subtler, fit is roomier and collars are smaller. The latter can be tabbed, button down a la the British or plain (small rounded ones seem newest) and can either match the shirt or provide a solid-color contrast.

The bigger, the better the sport shirt particularly those with voluminous sleeves. The most explosive tops are placket front models in fabrics such as nubby cotton and terry velour.

"This Sporting Life"

The trend to emulate sports influenced styles is ever present especially in tennis and soccer wear. The classic Rugby shirt which arrived on these shores from England in 1963 is still in the mainstream. The original Rugby shirt worn for matches is a white twill cotton, collared jersey pullover. A multitude of variations in pattern and color exist.

"Narrow-Minded"

Neckwear is definitely narrowing. For the first time since the late 60's, width has again become an issue. A topic which has already been discussed and debated by a national network and the Wall Street Journal, narrower ties are on the orders of most fashion retailers for 1978. The new tie can be anywhere from 3 and a half inches down to 2 and a half inches, depending on the area of the country where it is sold, and the fashion awareness of the store's customers. The 4-inch width is regarded as classic — having lasted about five or six years and is still expected to be around for another few years in mainstream markets.

Neckwear is being

Continued on page 15

To job interview

Personal attractiveness is key

Continued from page 12

that initial impression. "I remember one example of a young man who came dressed in a nice, expensive-looking suit, but wore his shirt collar open — no tie. More than one recruiter commented in writing that his 'casual appearance hurt him.'"

Jones also recalled research conducted about four years ago, which showed that a beard reduced a man's chances of getting hired by 85 percent and a mustache did the same by 50 percent.

"You've got to realize that while the interviewer may be 27 or 28 and have no objection to a hairy face, he's usually not the employer. That's some other guy, farther up the line, who's about 40 or 45, and anti-beard, anti-mustache."

Most students who object to "dressing-up" for job interviews maintain they should be hired for their "qualifications, not looks."

To them, Jones says, "These companies aren't interested in how pretty or handsome a person is; they just want to be able to feel that you're interested enough in them to go out of your way to look your best."

"If you don't think the interview is worth putting yourself out for, the recruiter isn't going to think you're worth recommending to the boss. Even if you manage to do a super sell job, he'll wonder what in the hell you're trying to prove."

Ms. Jones, Preston and Jones were all careful to stress that employers aren't looking for physical beauty, but something more easily attainable — "personal attractiveness." They recognize that many, who are just getting started, cannot afford a Pierre Cardin suit or a dress from Diane von Furstenberg's spring collection.

Just what is the look that will clinch the job? Do gentlemen interviewers really prefer Hanes?

Check our Fashion Do's and Don't's to see. Better yet, clip them out to tape on your closet door for quick, easy consultation.

WOMEN—DO'S

1) Do wear a stylish, matching skirt and jacket or an afternoon dress, as many interviewers prefer them to pants, unless, of course, you look much better in a pants suit.

2) As for accessories, coordinate your purse and shoes, they'll notice if you don't. Shoes are one of the things many employers look first at, perhaps because they act to "complete" an outfit. If you're careless about choosing them, this reflects a disregard for the overall effect of your dress — an oversight that the interviewer could interpret in a variety of ways. In most cases, fashionably high heels and open toed shoes are fine, if they compliment your ensemble. (Please, no bare-nothing sandals or kinky spike heels; soo tacky here.) Boots are O.K. in the winter, especially in bad weather, if worn tastefully, (don't stuff them with a pair of tight black pants) for instance, with a mid-calf length skirt, matching vest or sweater or jacket.

3) Any hairstyle is acceptable as long as it's neat and becoming. Forget flowers or brightly colored hair ornaments, if you wear a scarf around your neck or collar, it must be the correct color and tied properly before it will look flattering.

4) Wear only a modest amount of jewelry. Plain white or gold band earrings, a matching necklace and bracelet can often serve to enhance the effect of your apparel, plus 'everyday' rings.

WOMEN—DON'T'S

1) Don't overdress, this was one of the biggest complaints from employers, who don't care for

women who look "frilly or flashy." Comment: "I can tel; when a candidate has got \$400 wrapped around her; it's inappropriate and it almost always turns me off."

2) Beware of gouchos and other trendy fashions. Many male interviewers think they're "too much." Wearing them with boots, a coordinating vest and jacket might be an exception — if you want to take the chance.

3) Don't go too heavy on the makeup and no sunglasses, please. Comment: "If you're wearing those reflector sunglasses, the interviewer might think you're trying to hide your pupils and wonder why."

4) Lavish, heavy jewelry is distracting, at best, according to the three employers we spoke with. Their comments were: "There's no real reason to wear a lot of jewelry in a working situation for it looks out of place," and "Don't try to impress

Continued on page 17



Comfort and practicality

Continued from page 14

handled differently, too, with smaller knots or no-knot, half hitch looks that resemble an ascot. A neckwear alternative for spring is the leather lariat — but only for the avant garde.

Rumpled chic is here for spring so yeild to your inclinations and enjoy this 1940's flavored alternative to the structured look and go spontaneous. A more relaxed way of dressing almost sloppy in some cases, adds up to an easy going approach to putting oneself together. This offbeat Tom Waits flair for fashion is to males what the Annie Hall approach is to women. The incongruous touch of a feminine frilly petticoat underscores the menswear

fabrics, fedora and tie.

This season's radiator hot items afford more functional details like throat latches, shirring at the waist, T shoulders and an option to go pleated or cuffed.

To fit that credit card lifestyle go with personal leather goods with stitch and welt details. Contrast edgings act as active sportswear embellishments. The focus on fabrics range from natural linen to khaki gabardine. An accessory to take note of is the ever-present, although, barely visible under those tiny collars, collar pins.

The prime words are comfort and practicality. Layering for high versatility equals that multi-textured Total look. Spring dressing is full of soft touches indeed.



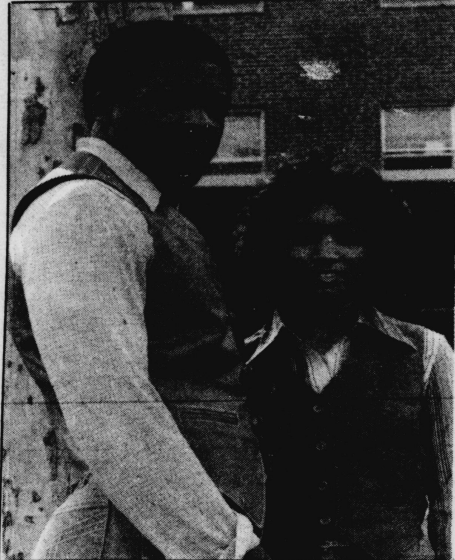
Simple beauty

Creative jewelry from Goldrush is meeting the trend of simple uncluttered fashions in fine jewelry. Mendy is wearing a 4-strand 14 kt. fine Italian Serpentine necklace.

Visit Goldrush for the perfect accents to simple beauty.

Goldrush Jewelry

Lexington Mall



Custom Tailored Vests

This spring, let us fit you into one of our cowhide, unfinished, tailor-made vests.

Starting at \$40.00



504 1/2 Euclid Ave.
253-3121

Trendy new looks for upcoming summer will be lightweight, earthy, natural

Continued from page 18

There are fantasy folklore prints with children's storybook pictures coming to life. Bicolor and tonal effects, subtle texture and organic patterns, representing waves, the sky, wind and rain are impressionistically translated. There are plenty of earth tone plaids, muted shaded stripes, pointillist paisley and syncopated stripes and dots that go on for yards of variety without repeating themselves.

There are hand-painted designs on fabrics such as silk crepe de chine to coordinate with wovens, tweed concepts using thick and thin handspun yarns or in lightweight open-weave effects like leno or Indian gauze.

Inventive prints come small-scale—tiny geometrics, shadowed florals, wallpaper stripes, pinstrips by day, pin dots and checks for evening.

The Feel of the Real

Spring's fabric mix is loaded with surface interest. Fabrics must obviously appeal to the eye for spring 1978 and also to the tactile sensation like glazed cotton lawn.

Two important fabrics this summer will be silk and linen, which are both natural, even rustic and extremely lightweight. The effect is dressy, almost luxurious and a definite departure from the "poverty look" of last season with raw calicos, rumpled khakis and drill uniform fatigues. Cotton is an all-time favorite in soft voiles, seersucker and eyelets. Other fabrics run the gamut from chemille, airy gossamer, muslin, bright shantung, to the nubby look of rough weave georgette.

Color Me Earthen

The color paintbrush for spring is a spicy one, leaning toward the rich mid-tones of paprika,

nutmeg, cayenne red, tarragon green and shrimp. The shades are almost edible and delicious to the palette with mocha, celery, mustard, oatmeal, cream, bordeaux, mango, chestnut, tea, blueberry, burnt cinnamon, bitersweet, deep eggplant and champagne.

The colors are still soft and translucent; the contrasts gentle. The drift is toward fresh pastels and primary reds, greens and blues. Background contrast is washed with neutrals like gray or raisin.

The Accessory

— Scarves worn under shirt collars are knotted like a man's tie or wrapped as a bandeau bathing suit top.

— Knotted leather belts or yards of lariot loop around your waist.

— Sunglasses prevent those crow's feet.

— Shawls serve as Double Duty apparel.

— Whether heading for the great outdoors or city activity, anklets with ruffles or lace are a must both for day and night.

The Summer Roundup

This season sportswear includes cotton lace easy skirts over gauze with matching camisoles, khaki and ivory pleated ruffletrimmed poplin petticoats and soft, waffle weave cotton separates.

Cylinder straight pants and slimmer skirts are often teamed with big blousons and oversized jackets.

Trendy new looks, which seem to spring from the streets, often begin with antique-clothing buffs.

Victorian petticoats and nightshirts, camisoles, kimonos and tapered slouched pants are all part of the big classic put

Continued on page 19

Paul Harris Separates You From the Crowd

She has that unique look of big and lazy in a blue gauze slouch dress by Mindy Malane. The outfit features an off-the-shoulder neckline, elastic waistband and roll-up sleeves. And you can complete the outfit at Paul Harris. Stop by Paul Harris and let them set you apart from the crowd.



Lis
fo

then
cut
have

1)
or a
unle
a jo
janit
woul
Shir
iron
to fi

2)
they
it an
mal
each
you'
a be
keep
Boot
bad

3)
very
coll

L
KE

Sell your leftover onion bulbs
with a KERNEL classified

Sultry Separates

For a luxe romantic mood blousey full sleeved tops coupled with ruffled skirts are stepping out. Capture the fresh look with two piece dressing that ensures and air of cool, clean elegance.



Shirley's Dress Shop
2242 Zandale
Telephone: 276-1596



List of do's and don'ts for male job applicants

them with your diamonds, cut glass or whatever you have, it'll only backfire."

preferred, although recruiters say their bosses aren't as uptight about it as they used to be.

MEN—DO'S

1) Do wear a coat and tie or a suit if you have one unless you're applying for a job as a plumber or janitor, in which case it would be inappropriate. Shirts should be neatly ironed and jackets tailored to fit. Tie? Conservative.

2) Do shine shoes if they're the kind that need it and, watch your socks — make sure they match each other and what you've got on. Coordinate a belt with shoes or else keep your jacket buttoned. Boots are acceptable in bad winter weather.

3) Good grooming is very important. Ear or collar-length hair is

MEN—DON'T'S

1) Don't wear a "leisure suit" with an open-necked flowered shirt for obvious reasons. A turtle neck with a jacket is also considered too informal as a tie is a MUST.

2) No necklaces, stick-pins or flashy rings. Comment "They look terribly out of place."

3) Be aware of the fact that long, bushy beards and very large afros might not work in your favor. Sometimes a good trim will do the trick.

4) No reflector sunglasses, as again, the interviewer will wonder what you're trying to hide.

LOST:

Jocko Biggley once lost 5 lbs. while reading the classifieds in the KERNEL. It's worth a try.

KENTUCKY KERNEL - 210 Journalism Building

All Your Favorite Brands Under One Roof

Levi, Wrangler, Faded Glory and Male, the leaders in denim fashions are available in a wide selection at the Missing Link in Lexington Mall.

They also have the latest in denim coordinate separates to compliment your jeans.

For contemporary spring denim fashions by famous names, visit the Missing Link at Lexington Mall.



The Missing
Link
LEXINGTON MALL

Spring look is casual, yet sophisticated

The spring sentiment is away from the body with a tailoring that allows a feel of shape and structure. The look is casual, but more thought out, even sophisticated. Subtle layers of sporty separates are more controlled, not bulky, and add up to Extra Spring. Shapes and fabrics which glide over the body often take the simple, uncluttered approach. The chief shapes are a mixture of big looks and a sprinkling of the slim-down.

This season's sportswear scenario includes cotton lace easy skirts with matching camisoles, ruffle-trimmed poplin petticoats and soft waffle-weave cotton separates. The focus is on sportswear from country squire casual to carefully constructed sloppy looks gleaned from young people in the streets.

The nonchalant mood of the season is getting shaped into billowy, voluminous Big Tops and narrowly proportioned skinny bottoms just waiting for you to start

stepping out. Dressage suits are sensational with long, nipped in, side pleated jackets.

Jackets range from the tailored button-suit, to boxy and short, to long and square-cut with new broad shoulders. One can find short hacking jackets, or the big unstructured Casablanca jacket that can be worn as a sweater over everything.

Go to the head of the class with the schoolgirl dress. It meets all the

requirements of romantic dressing with a long or flared, dropped torso and Balloon Blouson in whisperweight. The

slimmer shapes are never skin-tight, but instead skim the body. The leading looks explore the long strapless and pleated dresses to those cut on the bias. An exotic new entry is the classical shouldered toga-like dress, a free spirit both in its freeform and demeanor. For vampish enticement experience the Jean Harlow type wraparound dresses



with batwing bodices.

There has been a resurgence in popularity of the blouse. Tops move from body-baring camisoles and peasant shirts. The "little" blouse, usually short-sleeved or sleeveless, is a favorite. Blouses soften the tailored look with details of shoulder shirring, inset yokes, rounded collars and lace touches. Sometimes the blouse grows into a big soft dress. The sportier blouson gets its draw from the inspirational sweat-shirt. Blouses are best in soft fabrics that are boatnecked, flounce at the neck, cowl, Pierrot or tie with peasant details. Sleeves are tab-closed and rolled up or kimono cut.

The bottom line in skirts is the lean walking skirt with an inverted pleat for an outdoor look. Other ideas include softly tailored, easily gathered or very full shapes with high front or side slits.

A reedlike shape in pants for spring are what manufacturers are hoping will infuse fashion interest in the pants market, complement recent directions in hoisery and footwear and generally restructure apparel proportions. It has as many titles as interpretations: the forerunner—the cigaret jean, the slouch, the skinny, punk or tackle pants. New pencil slim trousers slouch over the ankles with the ease of a

dancer's warmup tights. They have a practical application for biking or hiking.

These pegged pants shape up easily around the waist and through the hips, and taper down to a new fresh narrowness at the ankle like jodphurs. The legs balloon or are whitened down at the ankles until tapering off to narrow cuffs. This luxe variation of the punk pant is called the Rajah pant.

A penchant for the Pegged Path is shown in the ankle emphasis this summer. Ankles are getting lots of hugs for spring sometimes it's with buttons, sometimes straps or slits, and sometimes its just those fabrics that get snug around the bottoms of those slim pants. A wider leg just doesn't show accessorizing.

Vests are reversed to and backed by stripes, checks or foulards. Try some tasty new shapes in this garment like the halter vest, bolero, overlong vest or long tunic top.

The accent is on feminine embellishments like baby white lace edging, tiny collars, small buttons at the side of a small cuffed pant, ruffles, point d'esprit lace, scalloped edging, facet stitching, lettuce leaf edging, hip smocking, and the blow-torched hem. Sweet lingerie particularities are exemplified through satin ribbon, embroidery and eyelet.

If you're in prints we've got you covered. Designers have planted yards of bouquets of stylized flowers and mille-fleurs. Prints will be significant in bold florals and tropicals, in bright colors or tiny challis-type prints in powdered pastels or with white predominating. There's extensive use of border prints using both themes.

Prints that flirt, cajole or deceive look like woven checks, homespun plaids, tweeds, or Oriental carpets.

Continued on page 16

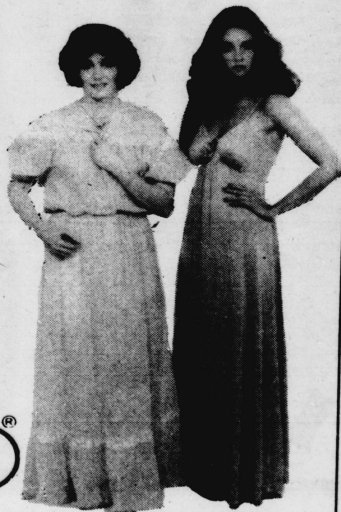
Steppin' Out?

For dining and dance, how about this simple but elegant spaghetti strap gown. It's 100 percent polyester which means easy care. The beautiful mauve colored dress with lace inset is just \$46 at The Limited and comes in sizes 5-13.

The Limited, where you can be you.

the limited

Fayette Mall



Clothing shows pride, self-esteem, vanity, envy, ambition and emulation

Continued from page 5
 trimmed bodysacks one of which is trimmed in red pompom fringe. Now that has got to be a statement on the characteristics of the soul, mind or temperament of the person.

The human inclination is to become tired of sensations that are experienced constantly, thus a quest for novelty ensues. Curiosity, the need for more stimuli and a spirit of adventure dare us to see what will happen under untried circumstances. Curiosity must occasionally come into conflict with established custom or habit or what is beautiful and harmonious.

The underlying meaning of how one garnishes the human body is communicated in part by nonverbal leakage.

Clothing enhances that certain mystery, and alludes to that strange double side of character. Let's delve deeper and examine the inner motivational variables promoting fashion interest.

Fashion is a protective armour that may defend us against imaginary dangers. A recluse may seek refuge from a hostile world by piling on layer upon layer. People draw clothes around them in an unfriendly atmosphere and loosen them in friendly, secure surroundings. It is a shield against temptation. Religious dress usually hides the figure beneath

the garb. Garments also transmit unconscious exhibitionism.

An outfit can command attention by being shocking or provocative. Self-assertion displays a need to be different. The desire for recognition may merely involve an effort to secure a response from people with whom we're associated with or a voracious appetite for praise.

Boredom feeds fashion change. Restlessness is

notable in the case of strong colors, dramatic accessories and extreme designs.

Clothing shows pride, self-esteem, vanity, envy, ambition and emulation. It can boost moral and confidence like with the purchase of a new hat.

A single piece of clothing can indicate leadership, identification with a particular social group, or double as a seductive ploy.

Ostentation acts as a trademark signifying who

we are and our outlook on life. Dress is a communicative tool expressing status or disapproval of it, position in the social hierarchy, conventionality, professional role, need for companionship through group identification, age, moods, desire to be desired, sense of order and time of day.

Let your fashions exude your personality, for clothes today are as the people who wear them.

Emphasis is on delicate details, feminine touches, necklines, cottons

Continued from page 16
 together for spring.

The chemise is a shape that fits everyone, often falling softly from a gathered yoke or drawstring neckline. Feminine touches such as

flounces and tiers, smocking and yoke necklines, add to the fullness of the silhouette. Neckline interest is strong, with deep slash versus drawstrings, Oriental induced Mandarin collars and stock ties.

The emphasis is on delicate details. Fabrics have that tactile sensation. Textures are crunchy. All cottons, such as gauze, hopsacking and crinkled looks and poplin, are taking off.

First impressions are based upon appearance, says Paula Powell

Continued from page 9
 skirt that was so popular last year, according to Powell. They are barely gathered — just in the front. She also added that the blouson tops, ankle strap shoes and spike heels will be popular this summer. Most of the clothes will be made out of natural fibers, "which means a lot of cotton and linen this summer."

Powell gets most of her information about the latest trends from Women's Wear Daily, a New York publication renowned as the bible of the fashion industry. "I only take it once a week, so I can get an idea about what's going on in the fashion market. I also read a lot of fashion magazines."

She finds fashion very interesting, for more than one reason. "You can tell a lot about people by the way they dress. A person's personality and lifestyle

can be detected from the clothes they like to wear. For example, athletic people wear more active sportswear, whereas people who are dressed up and look neat all the time may have the kind of job that requires meeting people a lot."

Powell said the way she looks is important to her because she feels better if she feels attractive. "People seem to have more respect for you if you take pride in yourself. Also, first impressions are based on what you see, so there again, appearance is important."

She added that she likes casual clothes when it's the proper place and that jeans will always be in, but she's glad that the trend is toward dressier clothes.

"Men seem to be changing with the women; they care more about how they look. Both are going back to the more classic styles."



Outdoors at the Ranch

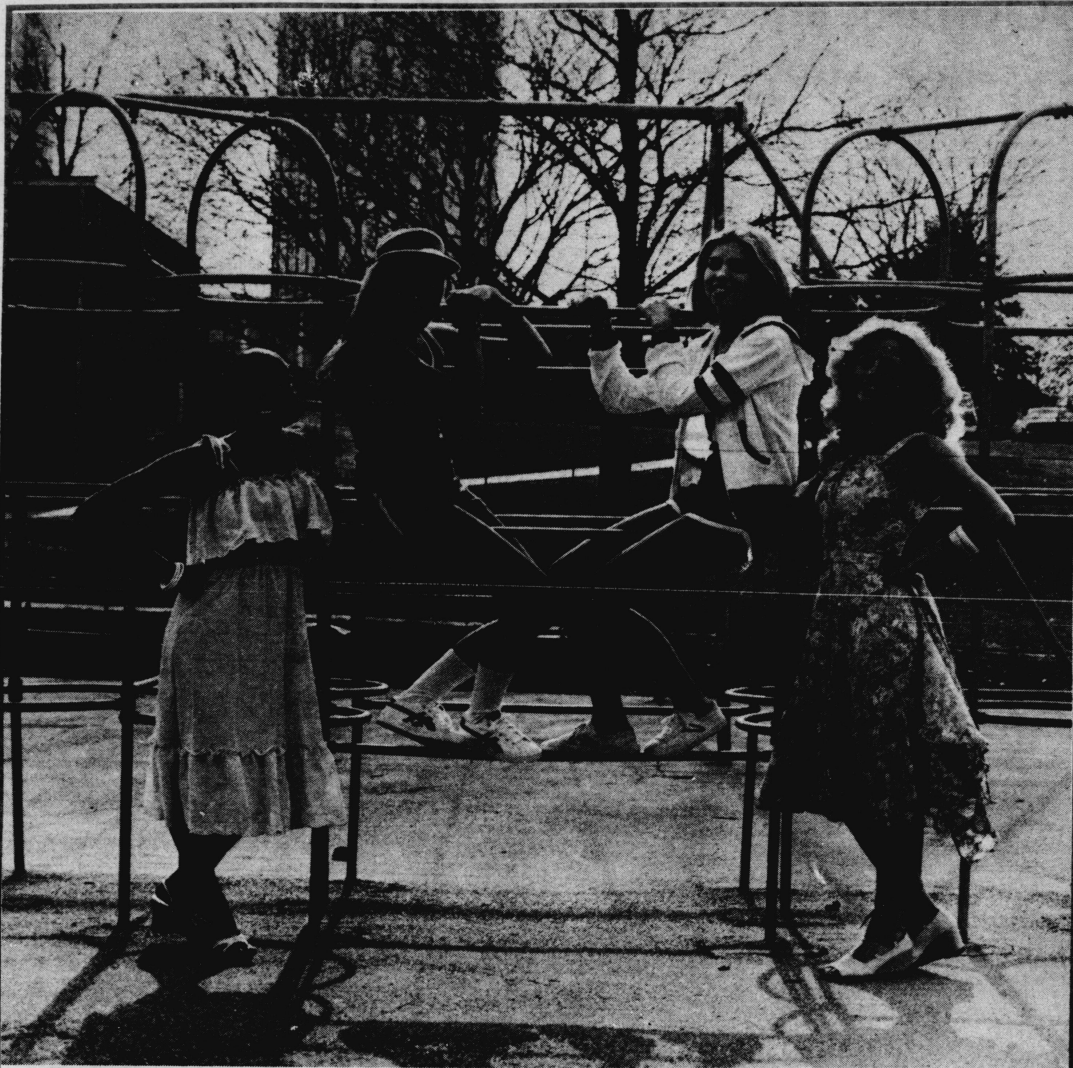
Whether it's Saturday Night leisure or out on the range, the Ranch has the diversity of fashions to meet your every need.

The young lady is wearing a navy overshirt by Jasmine Leas and Khaki slacks by Organically Grown. The outfit is accessorized with a visor by Betmar and a pocketbook by Marcus.

For the full range of name brand fashions for Spring and Summer, visit the Ranch at Fayette Mall.

The Ranch

**So you think you got problems?
 Check the KERNEL classifieds**



Gearing For a No. 1 Spring

J.C. Penney has the fashion look that will place you in the Winner's Circle. For those busy days at the tennis court and the beach, select coordinating separates from our terry cloth collection in our Junior Shop. Or you can dress up and step out for an evening of disco this summer in a colorful sundress from the J.C. Penney Dress Shop.

This
is JCPenney
Turfland Mall