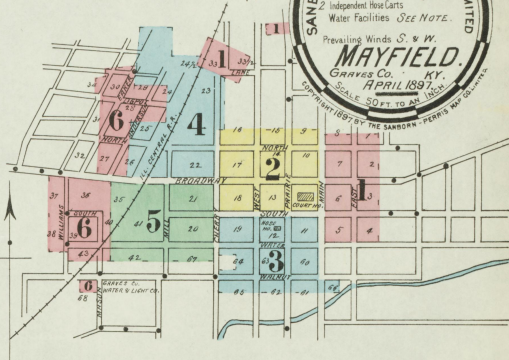


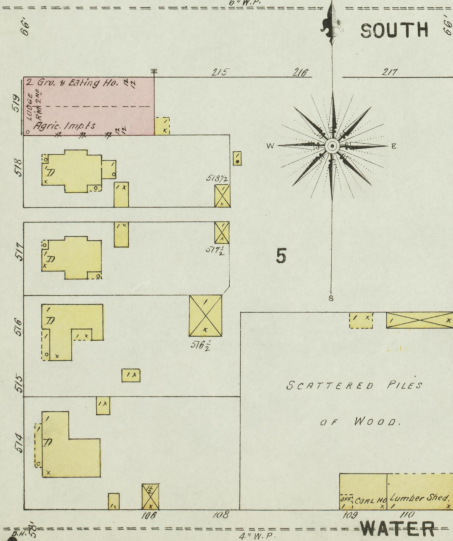
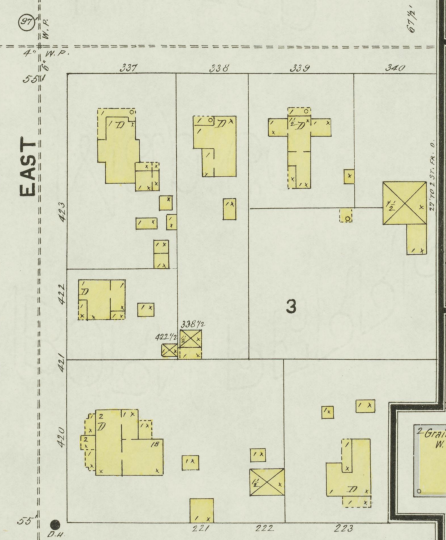
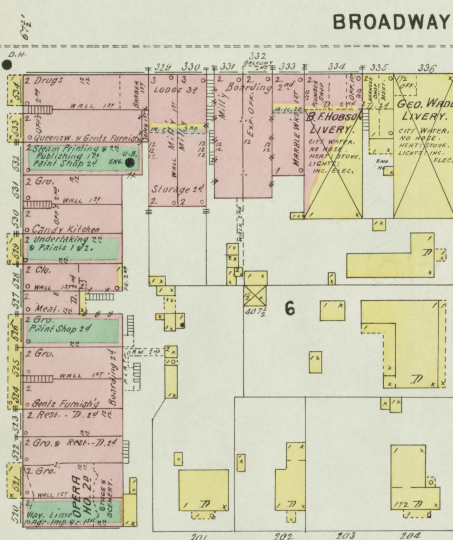
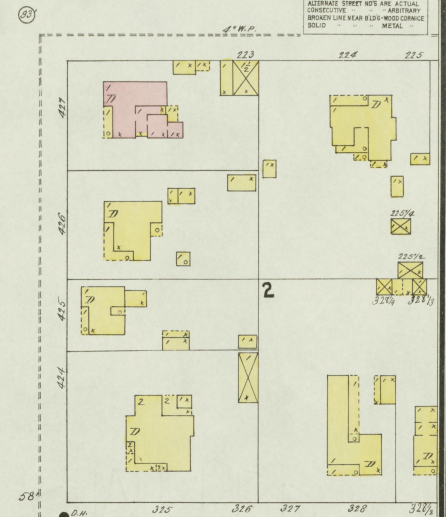
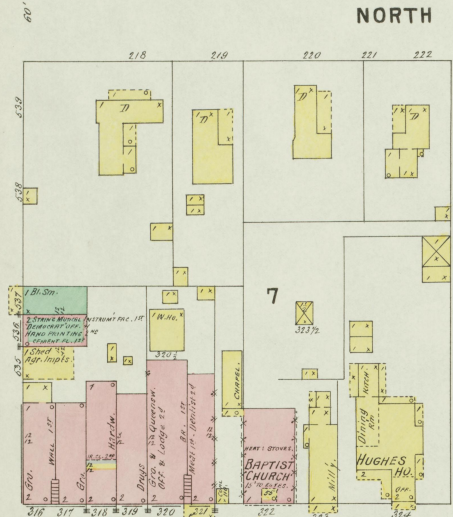
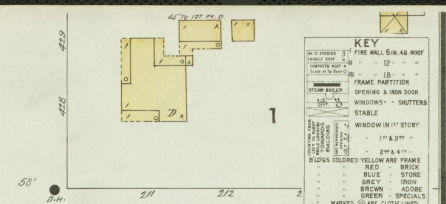
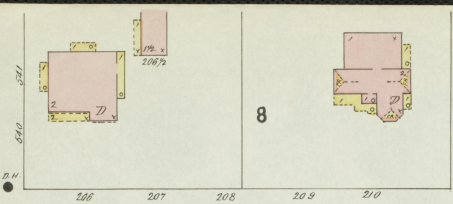
NOTE
Water Facilities. WATER WORKS SYSTEM
CHANGED BY BRIDGE TO BRIDGE CO. SERVICE
DIRECT PRESSURE SYSTEM. SUPPLY 4 WELLS.
2000 GALLONS PER HOUR. PUMPING HEAD 100 FT.
2 1/2" x 12" x 12" 5 WORKINGTON DUPLEX STEAM
PUMPS WITH CHANGING CAPACITY (750 x 1400)
500 GALLONS PER HOUR. 200 PSI. 1000
PRESSURE. 70 LBS.
FIRE DEPARTMENT VOLUNTEERS. 2 CO. OF 14 MEN &
CHIEF WHO ARE PAID FOR ACTUAL SERVICE.
TWO 2" WELLS HEAD HOSE CAPS. 800' 2 1/2"
GUSH RUBBER HOSE



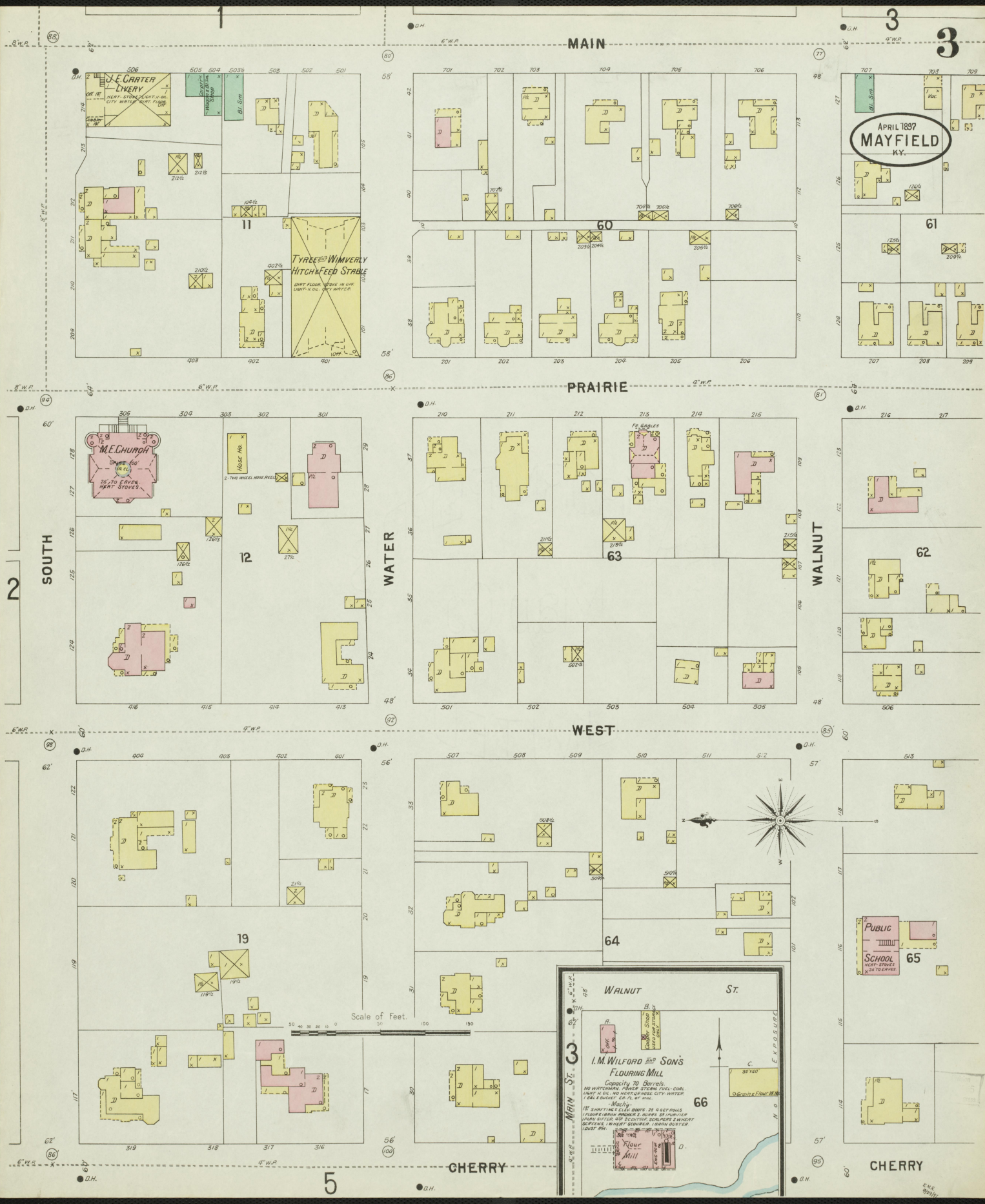
INDEX.

SPECIALS.

ADDRESS	DESCRIPTION	ADDRESS	DESCRIPTION
Albritton, J. T. Corn Mill	1	Hughes Hotel	1
Allen, R. H. Tobacco Rehandling	2	H. Centr. R. H. Depot	4
A. Bennett, Tobacco Rehandling	3	Ligon Bros. Tobacco Rehandling	5
Barlett Church	4	H. W. Tobacco Rehandling	5
Blalock, J. P. Tobacco Rehandling	5	Mayfield Steam Engine	5
Boaswell, C. W. & Co. Tobacco Rehandling	6	Woolen Mills	5
Conrad, Othum & Coy. Flour Mill, Box 1 & 2	6	Mason's Episcopal Church	5
Casey, W. A. Lumber Yard & Coopers	6	Master Printing	5
Catholic Church	6	Meyers & Sons Tobacco Rehandling	5
Chowling & Wright, Spoke Factory	6	Opera House	5
Clark, S. D. Tobacco Rehandling	6	Public School	5
Colored Baptist Church	6	Sherrill, Allen & Co. Tobacco Warehouse	5
County Court House	6	Sherrill, Allen & Co. Tobacco Rehandling	5
Democrat Printing	6	Slayden, W. J. Tobacco Rehandling	5
Enterprise Warehouse	6	Stove Works	5
Flood, T. S. Cooper Shop	6	Standard Oil Co.	5
Garland, R. H. Tobacco Rehandling	6	Stevens, A. M. Lumber Co.	5
Graves County Water & Light Co.	6	Western Baptist Warehouse Co.	5
Griffin & Sherrill, Tobacco Rehandling	6	Wilford, I. M. & Son, Flour Mill	5
Hahn, H. W. Tobacco Rehandling	6	Wright, J. A. Tobacco Rehandling	5
Hankin, J. Tobacco Rehandling	6	W. T. Tobacco Rehandling	5
Houston, Ligon & Co. Tobacco Warehouse	6		



APRIL 1897
MAYFIELD
N.Y.



MAIN

PRAIRIE

WEST

CHERRY

SOUTH

WATER

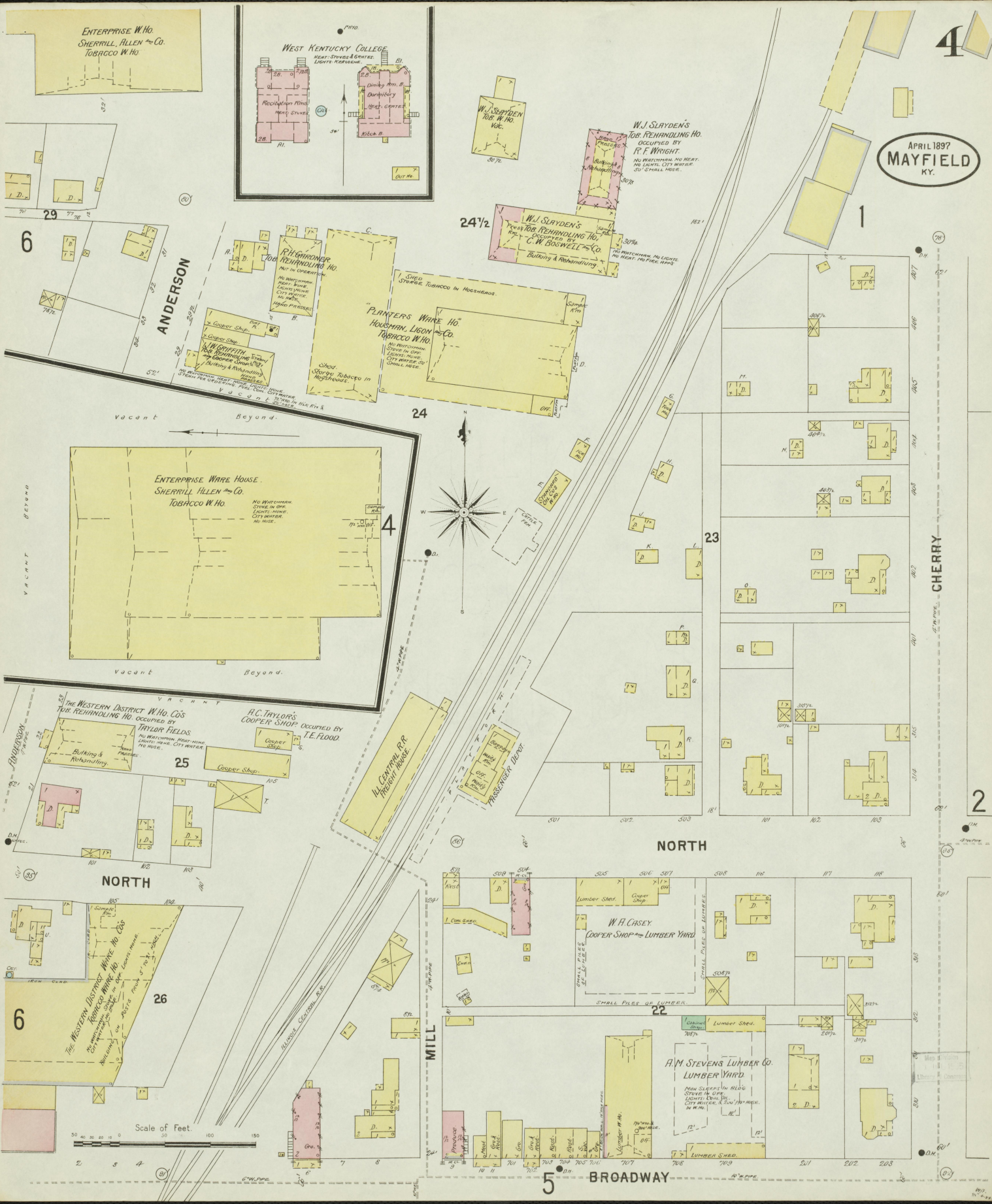
WALNUT

CHERRY

**I.M. WILFORD & SON'S
FLOURING MILL**
Capacity 70 Barrels.
NO WATERSIDE POWER SYSTEM FULL-CORR.
SHUT IN OR NO REPT. OF HOSE CITY-WATER
1 GAL. & BUCKET OF OIL PER MIN.
Machinery:
18' SHAFTHOLE STEEL DRUMS 25 H. P. ROLLERS
1 FLOUR BRUSH AND 2 QUIPS 34 IN. DIAMETER
WINDMILL OVER 800 SCOTLAND SCOTLAND'S WINDMILL
SCREWES, 1 WHEAT SCREWES, 1 CORN DUSTER
LOUISIANA

PUBLIC
SCHOOL
HOSE STOVES
24 TO 25 P.M.

Scale of Feet.



CHERRY

NORTH

5 BROADWAY

Scale of Feet

2

3

5

CHERRY

APRIL 1897
MAYFIELD
KY.

SOUTH

WATER

BROADWAY

MILL

4

MAYFIELD WOOLEN MILLS
Woolen Mills and Paint Factory

Reservoir

G. R. ALLEN TOB-REHANDLING HO.
ALLEN & BENNETT

J. A. WRIGHT TOB-REHANDLING HO.
J. A. WRIGHT & CO.

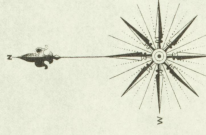
CANADAY GILLUM & HEY
LUMBER W. HO.
BEING BUILT

Scale of Feet.
0 20 40 60 80 100 120 140 150

6

42

CENTRAL



NIGHT & SUNDAY WORKING, AND ALSO CHECK BETW. 12 HOURS. HEAVY STEAM 12:00 IN EVENING AND 4:00 IN DAY. HEAVY STEAM FUEL CON. LIGHTS. ELEC. INC. 575 WATER 12:00 IN YARD WITH 100 HOPS ON SAND. 12:00 IN DAY. BLEND FOR FLOUR MADE IN CYLINDERS AND ROLL. 2 1/2 TONS AMPHONIA FROM RESERVOIR TO BLEND 10 1/2 HOPS IN MILL AND 2 STEAM 12:00 IN EVENING.

PROVISIONS
D.H.

STAND
PURE
1250
C.M.B.
3/15/97

