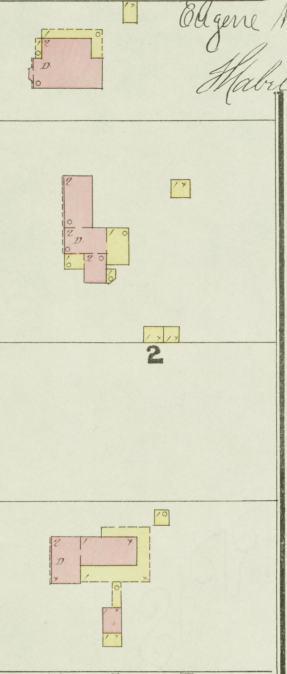


BRADSTOWN, KY. OCT. 1891.

WE HAVE EXAMINED THE NEW MAP OF BRADSTOWN, KY. MADE BY THE SANBORN-PERRIS MAP CO. LIMITED OF NEW YORK, AND FIND IT INCLUDES ALL THE BUSINESS AND LARGE SPACES OF THE RESIDENCE DISTRICTS. ALL DISTRICTIONS WRITTEN HERE AND ALL SPACES BETWEEN ONE TIE OF THE COURTESY. ALSO THAT THE RISKS ARE CORRECTLY SHOWN.

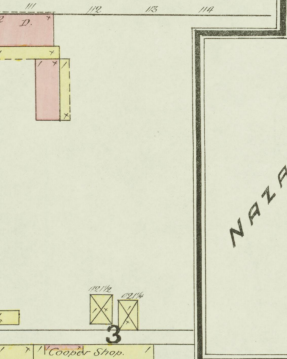
*Ed Halliday Esq
Eugene Wilson Esq
Habel Gray Esq*

BEALL

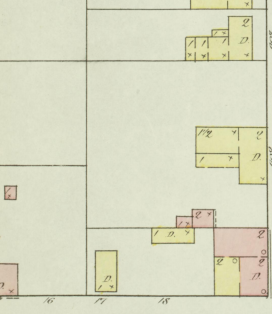
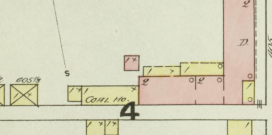
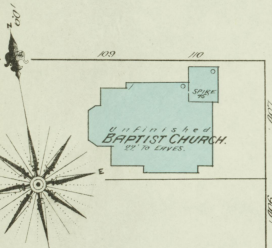
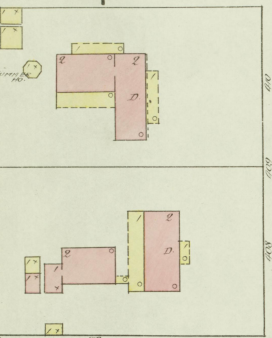
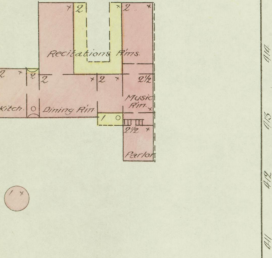


MAIN OR 3RD

CHESTNUT



BRADSTOWN FEMALE ACADEMY

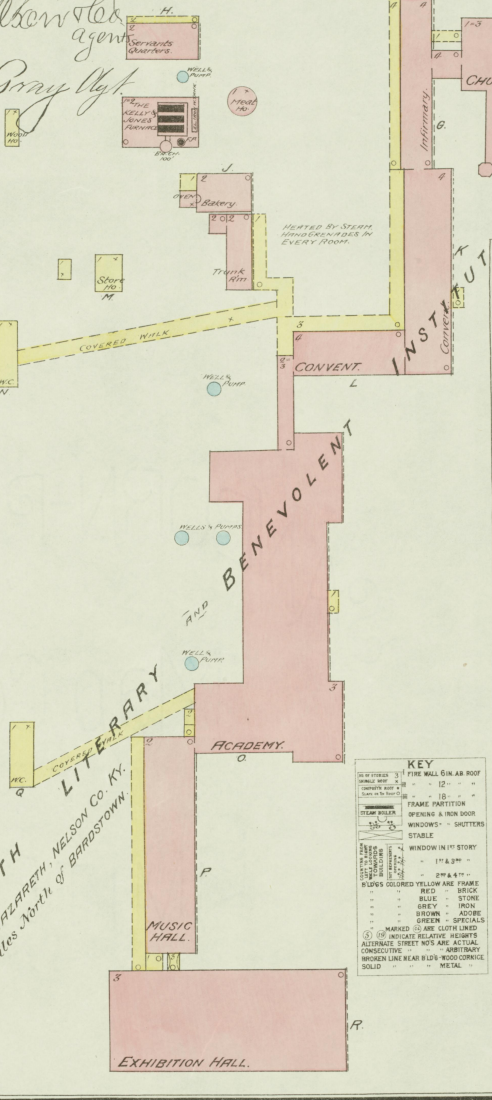


BROADWAY



SEE SHEET

Nº 2.



NAZARETH LITERARY AND BENEVOLENT ACADEMY
MUSIC HALL
EXHIBITION HALL

KEY

- FIRE WALL ON AB ROOF
- IRON DOOR
- FRAME PARTITION
- OPENING IN IRON DOOR
- WINDOW - SHUTTERS
- STABLE
- WINDOW IN 1ST STORY
- STAIR
- SLIP'S COLORED YELLOW ARE FRAME
- RED - BRICK
- BLUE - STONE
- BROWN - IRON
- GREEN - ASBESTOS
- GREEN - SPECIALS
- MARKED 'S' ARE CLOTH LINED
- MARKED 'A' ARE ALTERNATE STREET NOS ARE ACTUAL
- CONDUCTIVE - ARBITRARY
- BROKEN LINE NEAR BLDG'S WOOD CORNICHE
- SOLID



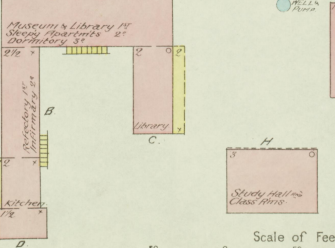
INDEX.

SPECIALS.

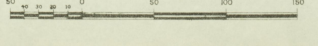
Baptist Church	1
Barber & Ferriell, Distillery	1
Bradstown Female Academy	1
Barnes, C. R., & Co. Store House	2
Beam, D. M., & Son, Distillery	2
Belle of Nelson Distillery	2
Boone & Bro., Distillery	2
Big Spring Distillery	2
Brooks & McClaskey, Distillery	2
Carothers & Bros. Lumber Yard	2
Central Hotel	2
Chapman, A. & B., Distillery	2
Corn Hollow Distillery	2
Dant, J. B., Distillery	2
Early Times Distillery Co.	2
Greentree Distillery Co.	2
Gwyn Spring Distillery	2
Haydon, H. B., & Co., Distillery	2
Head & Beam, Distillery	2
Lawcaster, S. P., Distillery	2
McKee & Beam, Distillery	2
McKenna, H., Distillery	2
Market House	2
Mattingly & Moore, Distillery	2
Methodist Church	2
Miles, E. L., & Co., Distillery	2
Moore, T. S., Distillery	2
Murphy, Barber & Co., Distillery	2
Hotel	2
Nazareth Literary & Benev. Instit.	2
Nelson County Distillery Co.	2
Record Printing	2
New Hope Distillery Co.	2
Newman House	2
O'Regan Hotel	2
Presbyterian Church	2
St. Joseph's College & School	2
Samuels, T. W., Distillery	2
W. B., & Co., Distillery	2
Shahan & Co. Flour Mill	2
Simms & Edson, Distillery	2
Sisco, J. W., Carriage Factory	2
Smith, G. T., Roller Mill	2
Sugar Valley Distillery	2
Sutherland, H., Distillery	2
Walker, F. G., Distillery	2
Whalen, H., Saw & Planing Mill	2

ST. JOSEPH COLLEGE AND CHURCH

(COLLEGE NOT IN OPERATION NOW)

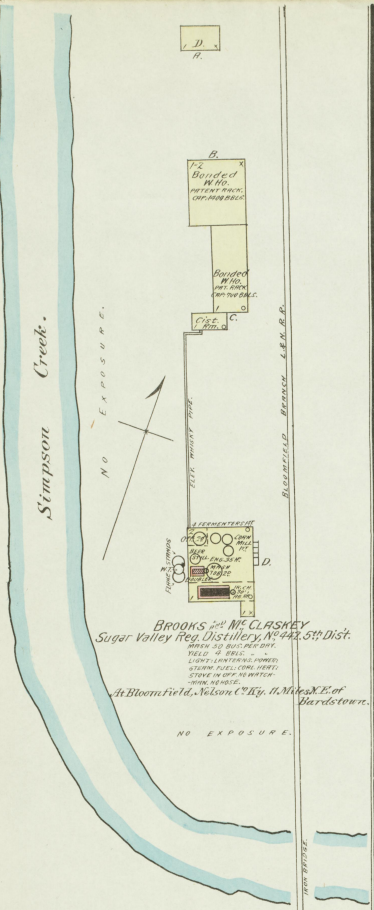


Scale of Feet.

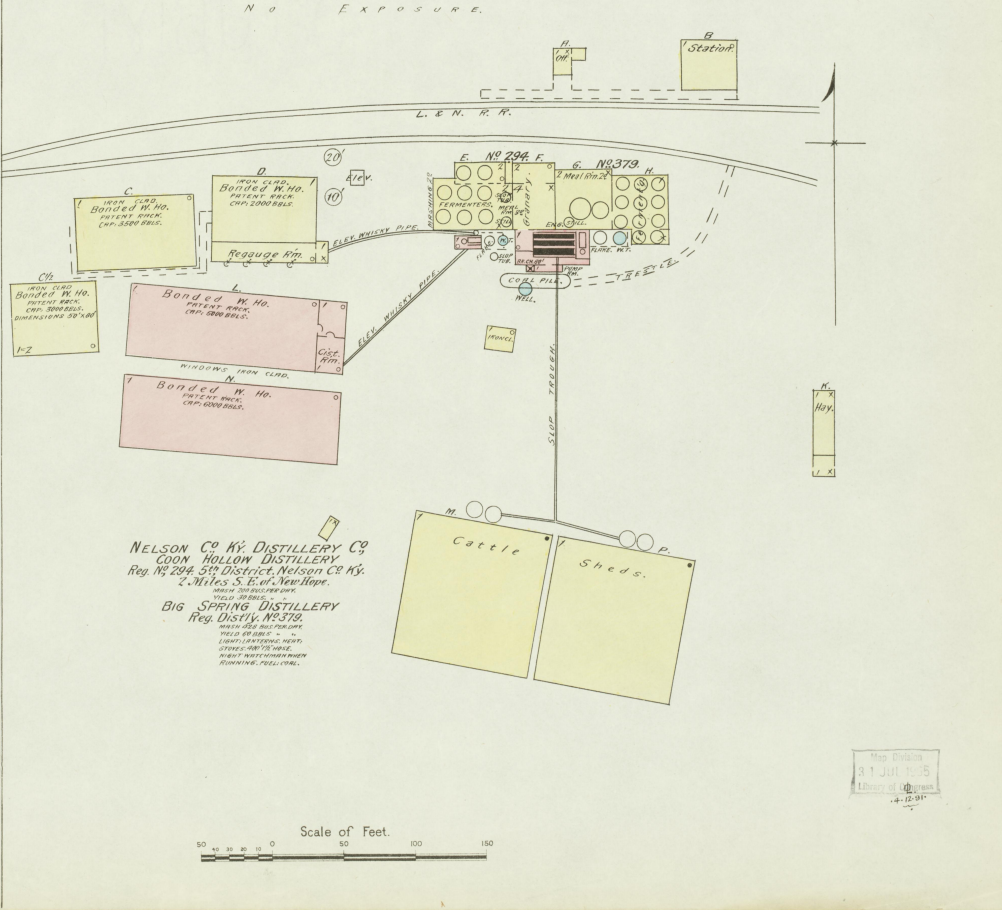
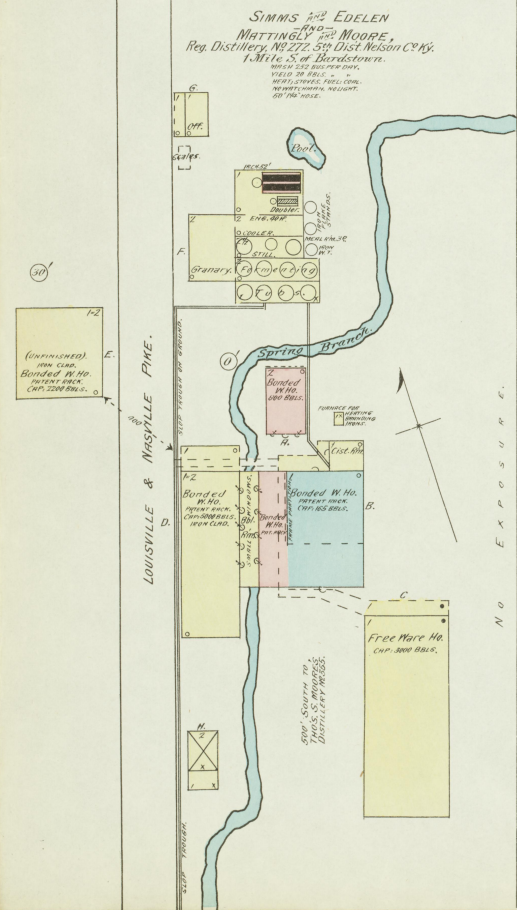
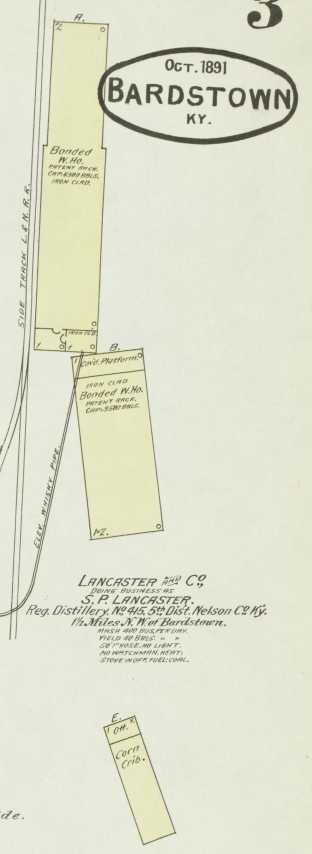
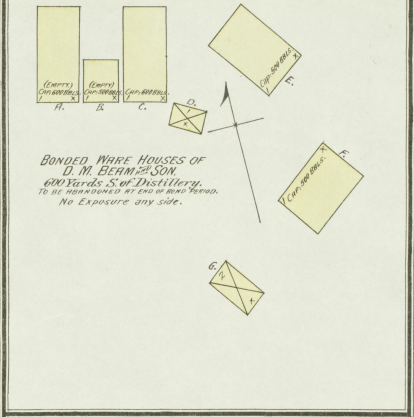
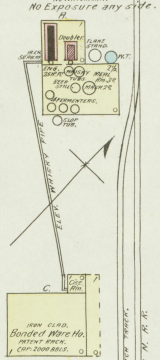


MARKET ST.

OCT. 1891
BARDSTOWN
KY.

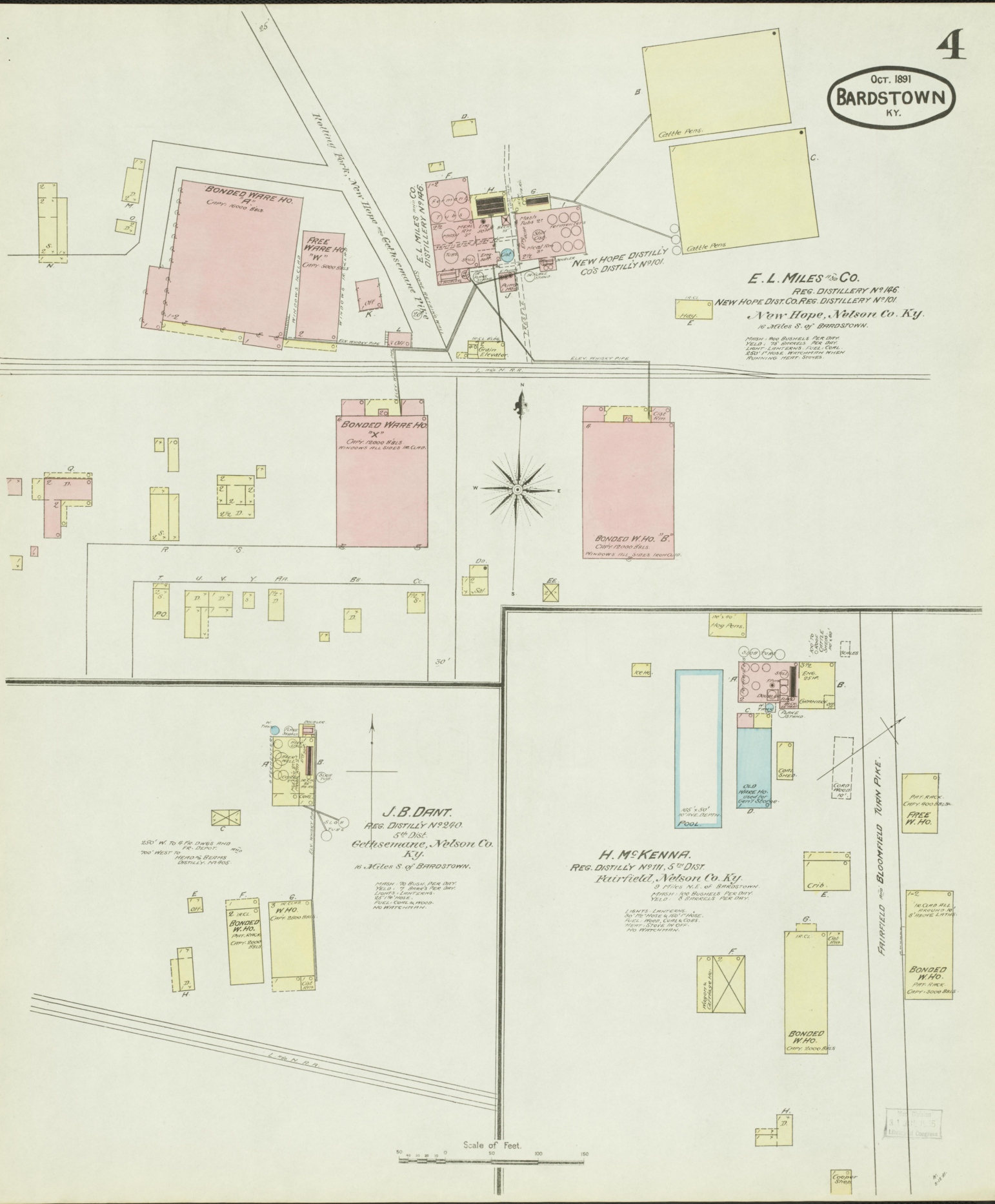


D. M. BERN & SON
Reg. Distillery, No. 230, 5th Dist. Nelson Co Ky.
3 Miles N. W. of Bardstown.



Map Made
31 JUL 1895
Library of Congress
-1895-

OCT. 1891
BARDSTOWN
KY.



E. L. MILES & Co.
REG. DISTILLERY NO. 96.
NEW HOPE DIST. CO. REG. DISTILLERY NO. 101.
New Hope, Nelson Co. Ky.
10 Miles S. of Bardstown.

WASH. AND BUSHELS FOR DRY
YIELD 75 BUSHELS PER DAY
LIGHT LANTERNS FUEL COAL
2501 POUNDS WITH COAL WHEN
RUNNING HEAT STOVES.

J. B. DANT.
REG. DISTILLERY NO. 240.
5th Dist.
Cokesmore, Nelson Co.
Ky.
16 Miles S. of Bardstown.

WASH. AND BUSHELS FOR DRY
YIELD 75 BUSHELS PER DAY
LIGHT LANTERNS FUEL COAL
2501 POUNDS WITH COAL WHEN
RUNNING HEAT STOVES.

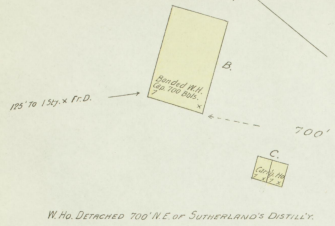
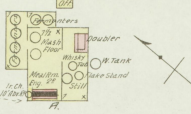
H. McKENNA.
REG. DISTILLERY NO. 311.
5th Dist.
Fairfield, Nelson Co. Ky.
9 Miles N.E. of Bardstown.

WASH. AND BUSHELS FOR DRY
YIELD 75 BUSHELS PER DAY
LIGHT LANTERNS FUEL COAL
2501 POUNDS WITH COAL WHEN
RUNNING HEAT STOVES.

Scale of Feet.
0 50 100 150

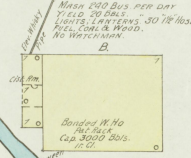
Oct. 1891
BARDSTOWN
KY.

HENRY SUTHERLAND
Regd. Distill. No 100, 5th Dist.
NELSON CO. KY.
4 Miles S.W. of Bardstown.
Wash 20 Bus. per day.
Yield 3 Bbls.
No Lights, Fuel, Wood,
No Watchman.

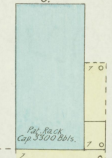
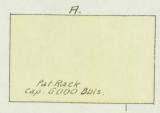


W.Ho. Detached 700' N.E. of Sutherland's Distillery.

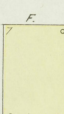
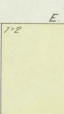
F.G. WALKER
Regd. Distill. No 210, 5th Dist.
NELSON CO. KY.
1 Mile W. of Bardstown.
Wash 200 Bus. per day.
Yield 30 Bbls.
No Lights, Lintens, No Fire Hose,
No Coal & Wood,
No Watchman.



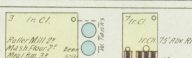
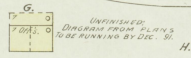
Bonded W.Hos. of
EARLY TIMES DISTILLERY CO.
3/4 Mile E. of Distillery
To be abandoned at end of bond



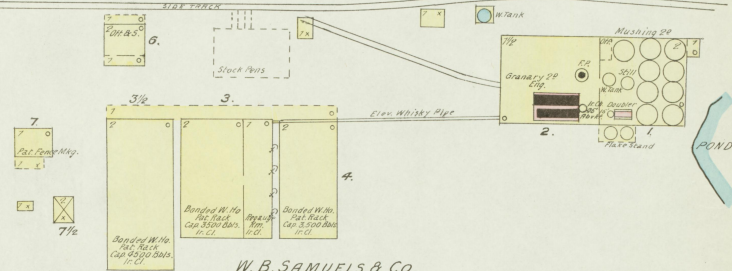
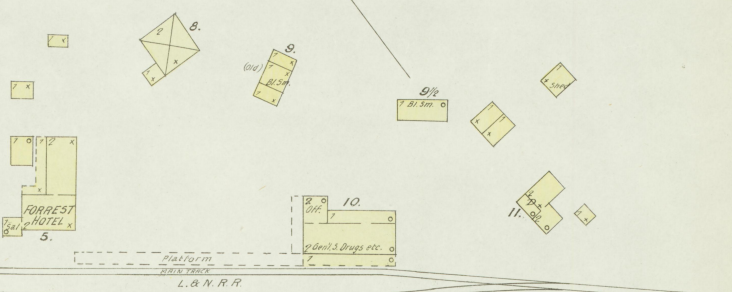
MAIN TRACK L. & N. R. R.



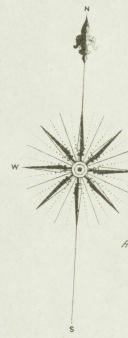
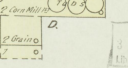
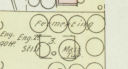
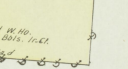
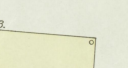
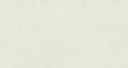
EARLY TIMES DISTILLERY CO.
Regd. Distill. No 270, 5th Dist.
NELSON CO. KY.
5 Miles N.E. of Bardstown.
Wash 600 Bus. per day.
Yield 30 Bbls.
No Lights, Fuel, Coal, Lintens,
No Coal & Wood, No Watchman when running.
No Explosive on site.



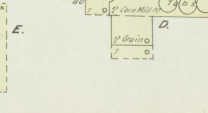
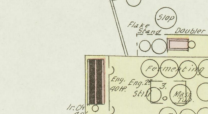
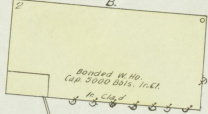
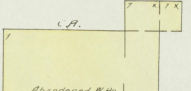
Scale of Feet.
0 50 100 150



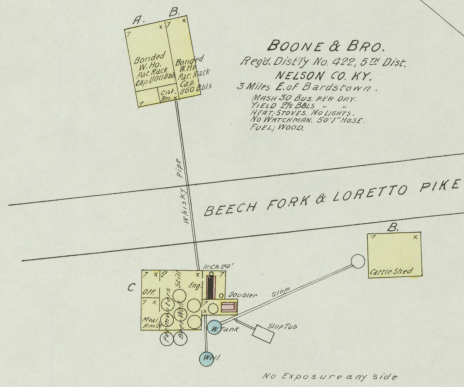
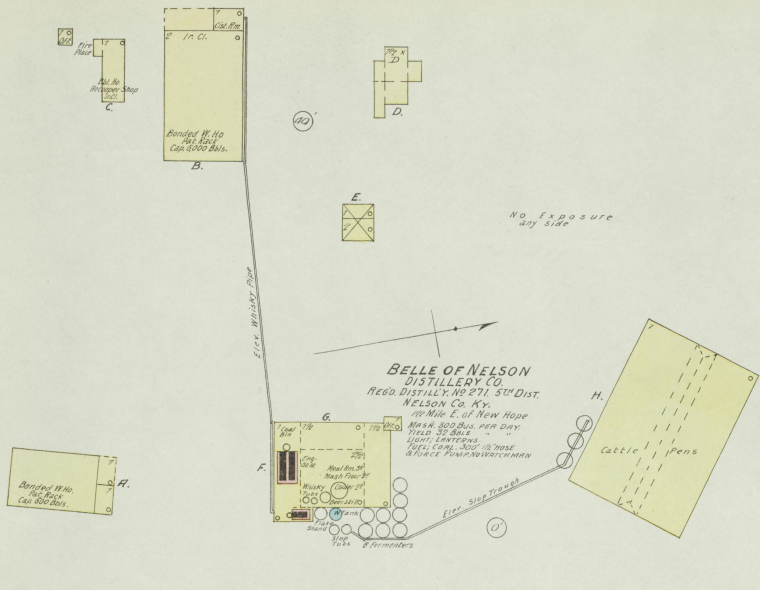
W.B. SAMUELS & CO
Regd. Distill. No 201, 5th Dist.
NELSON CO. KY.
6 Miles N. of Bardstown.
Wash 300 Bus. per day.
Yield 30 Bbls.
No Lights, Lintens, Cap. Ternis,
No Coal & Wood,
No Watchman, Fuel, Coal & Wood.



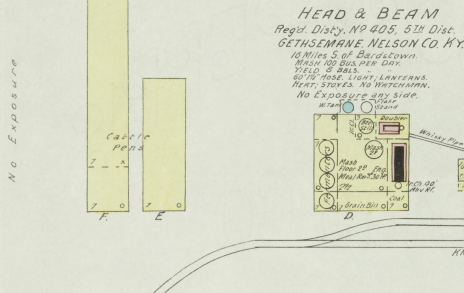
T.W. SAMUELS
Regd. Distill. No 195, 5th Dist.
NELSON CO. KY.
7 Miles N. of Bardstown.
Wash 100 Bus. per day.
Yield 30 Bbls.
No Lights, Lintens, Cap. Ternis,
No Coal & Wood, No Watchman.



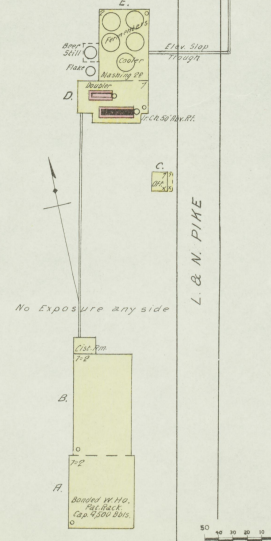
Map drawn
31 Jan. 1891
Library of Congress



GWYN SPRING DISTILLERY.
Mc GEE & BEAM
 Regd. Distill. No. 271, 5th Dist. NELSON CO. KY.
 5 Miles N. of Bardstown.
 Mash 20 BUS. PER DAY
 YIELD 10 BLS
 LIGHT LANTERNS
 NO WATCHMAN, FIRE, WOOD



THOS. S. MOORE
 Regd. Distill. No. 355, 5th Dist. NELSON CO. KY.
 1 Mile S. of Bardstown.
 Mash 100 BUS. PER DAY
 YIELD 10 BLS
 LIGHT LANTERNS, HEAT STOVE IN OFF
 100' 1/2 IN. CASE, NO WATCHMAN.



GREENBRIAR DISTILLERY CO.
 Regd. Distill. No. 5th Dist. NELSON CO. KY.
 4 1/2 Miles E. of Bardstown.
 Mash 200 BUS. PER DAY
 YIELD 20 BLS
 LIGHT LANTERNS, LANTERNS, HEAT STOVES, NO WATCHMAN WHEN RUNNING
 NO EXPOSURE ANY SIDE
 UNWITNESSED, DIAGRAM SHOWS PLANS, WILL BE RUNNING BY DEC. 31.

