

10

CARR

14

SECOND

11

1A

17

16

4

3

4



APRIL 1909
FULTON
KY. & TENN.

3

NORMAN NOT PAVED

VINE NOT PAVED

ARCH NOT PAVED

MC COMB NOT PAVED

BURTON IMPROVED

LAKE EXTENDED

WALNUT

USONA HOTEL

2

9

J.F. WALLACE MILLING Co.

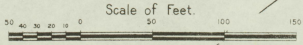
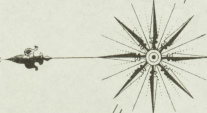
NOT IN OPERATION MARCH 27, 08
BUSHING-MAN-NO HEET-NO FIRE APP-
LIGHTS ELEC & LANTERNS-FUEL-COAL-
MACHINERY-
47 FT 6 DOUBLE STAND ROLLERS, 200 REV-
ONE BARREN & 2 SILVER DRESS SHOOTERS-
600 REV-1 S.B.S. SEPARATOR-200 REV-
200 FT 4 SMITH PUMPHERS, 100 REV-1 BURN
QUARTER-1 SHARP SHOOTER-
300 FT 1 SCALPING FEELS-2 ROUND FEELS-
8 CENTRIC FEELS-3 FINE SUB COLLECTORS-

FULTON WATER WORKS
WATER SUPPLY COMPANY OF FULTON, KY.
CAPACITY 1,000,000 GALLONS PER DAY
ELEVATION 1,200 FEET

FULTON ELEC. LIGHT & POWER Co.
WORK ON DUTY CONVEYERS
HEAT-STEAM-LIGHTS ELEC-
FUEL-COAL-CITY WATER-
NO FIRE APP-

STANDARD OIL CO.

11



LAKE ST. EXT'N

FOURTH

MERRS ALLEY

WASHINGTON ST.

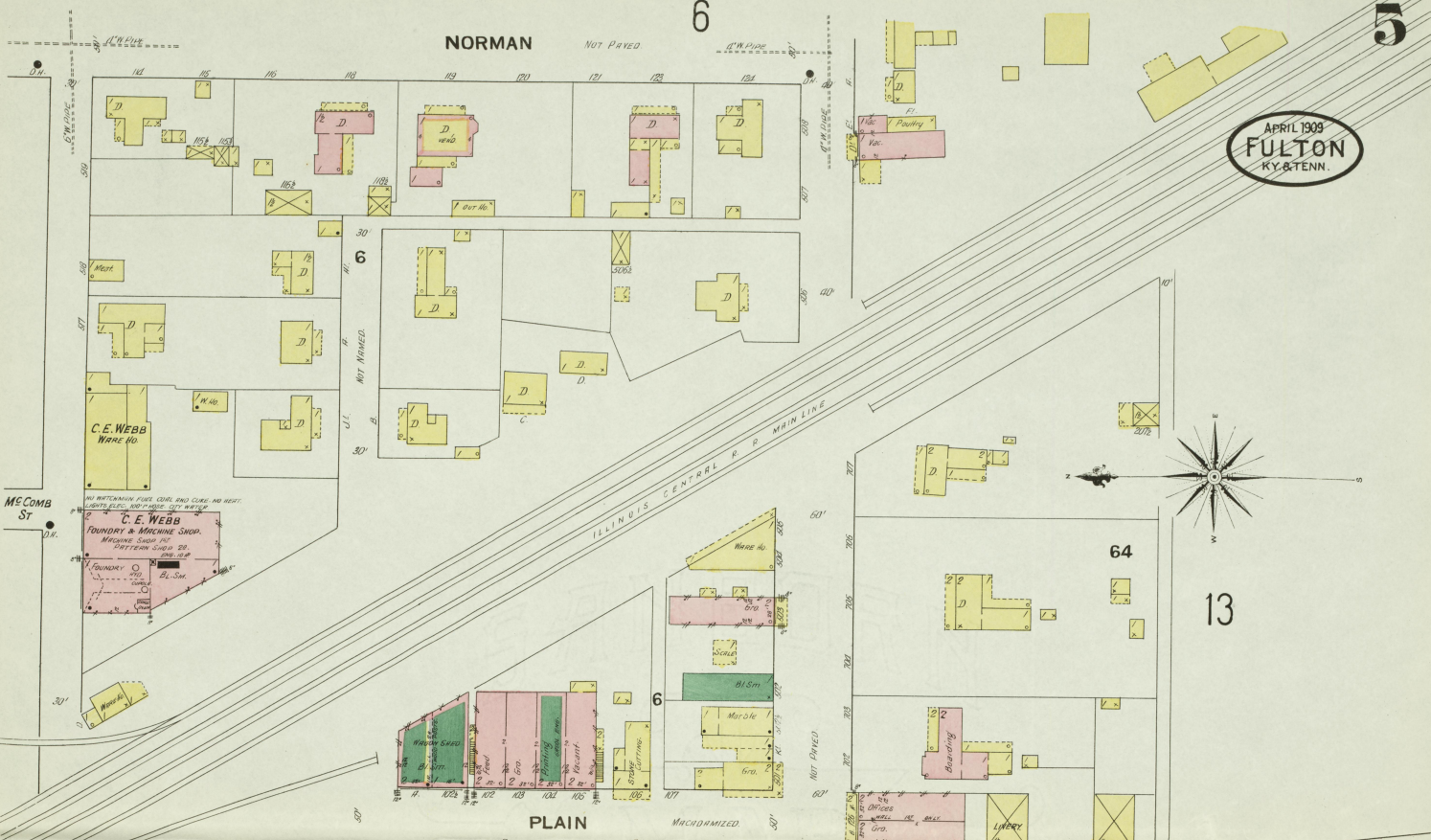
MILBERRY ST.

APRIL 1908
FULTON
KY. & TENN.

NORMAN

6

5

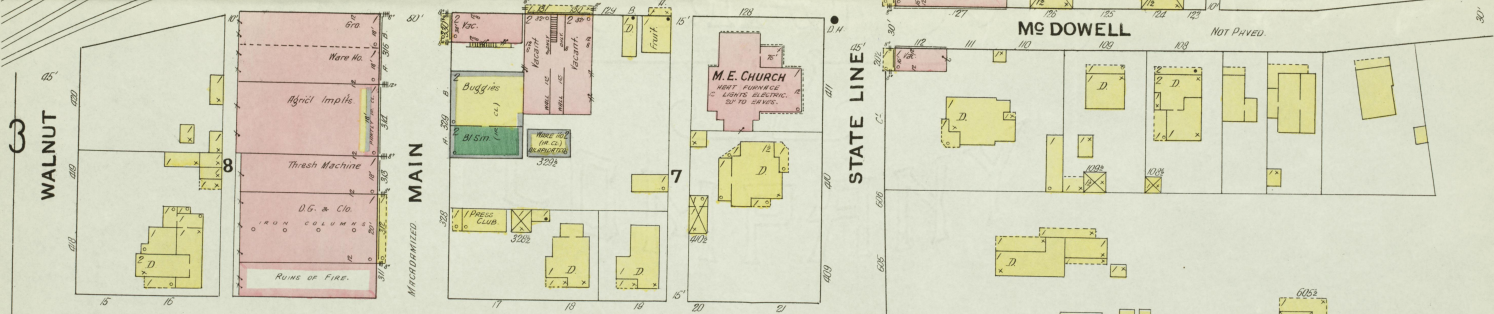


PLAIN

6

64

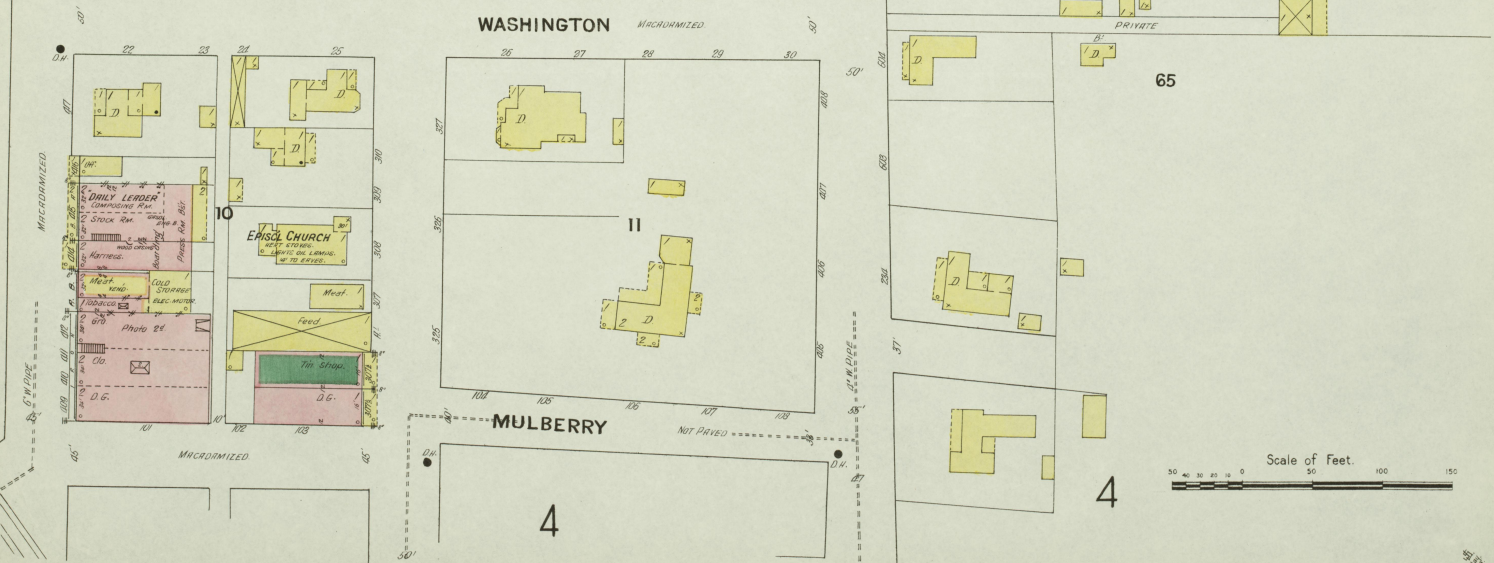
13



WASHINGTON

11

65

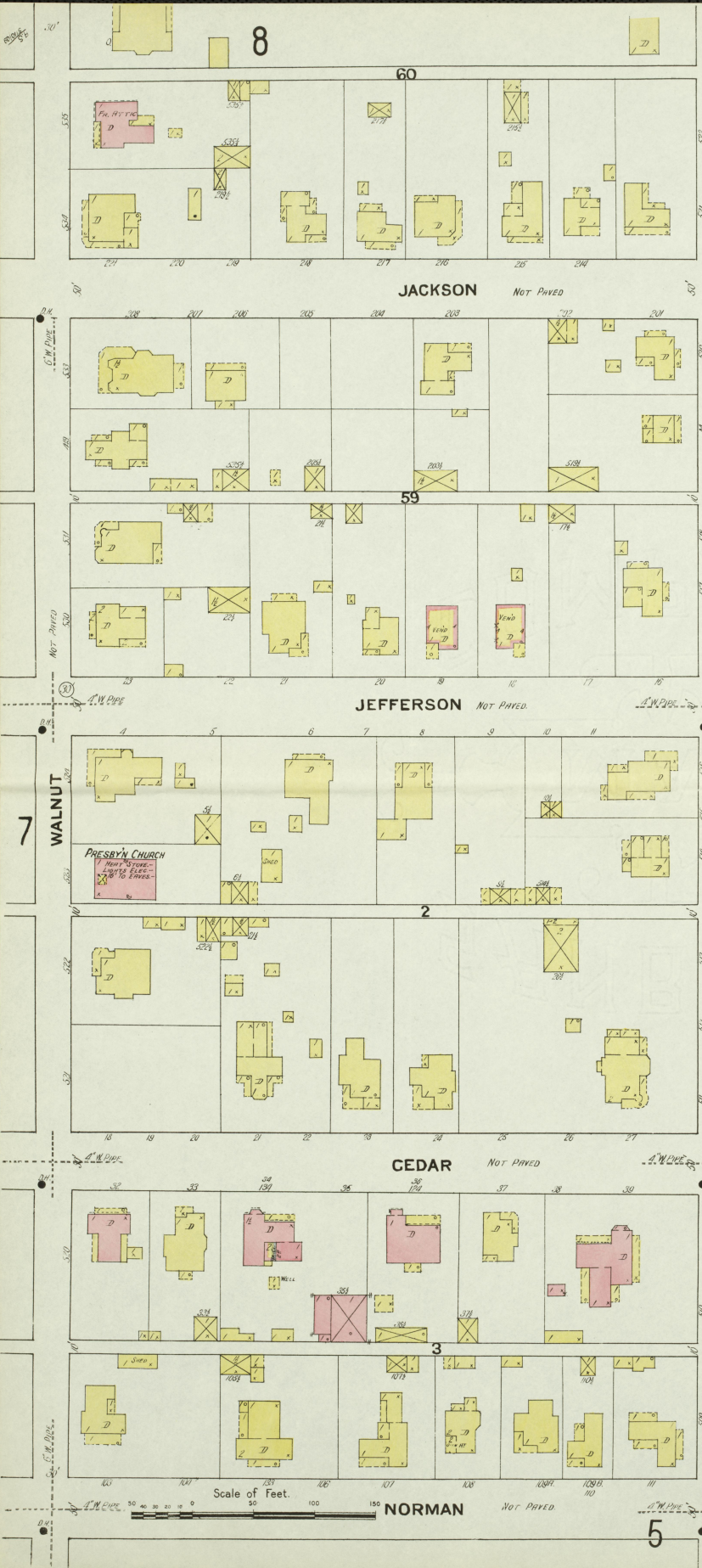
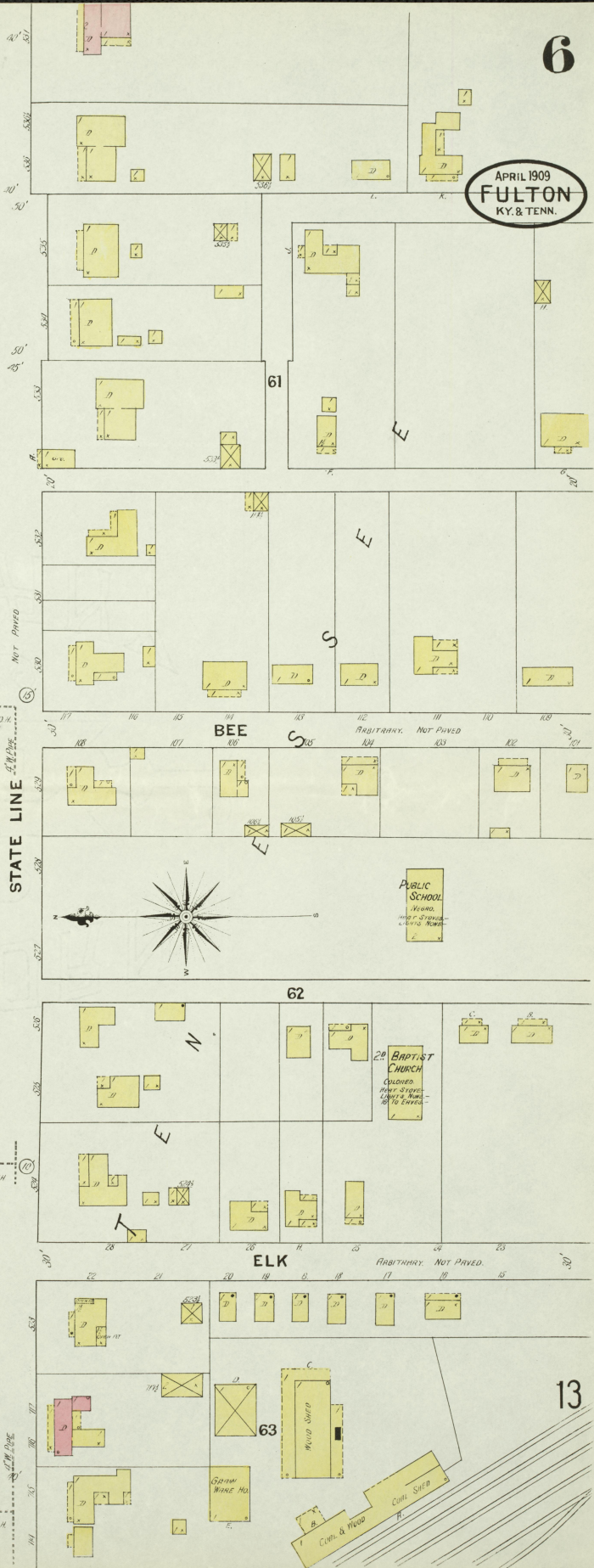


MULBERRY

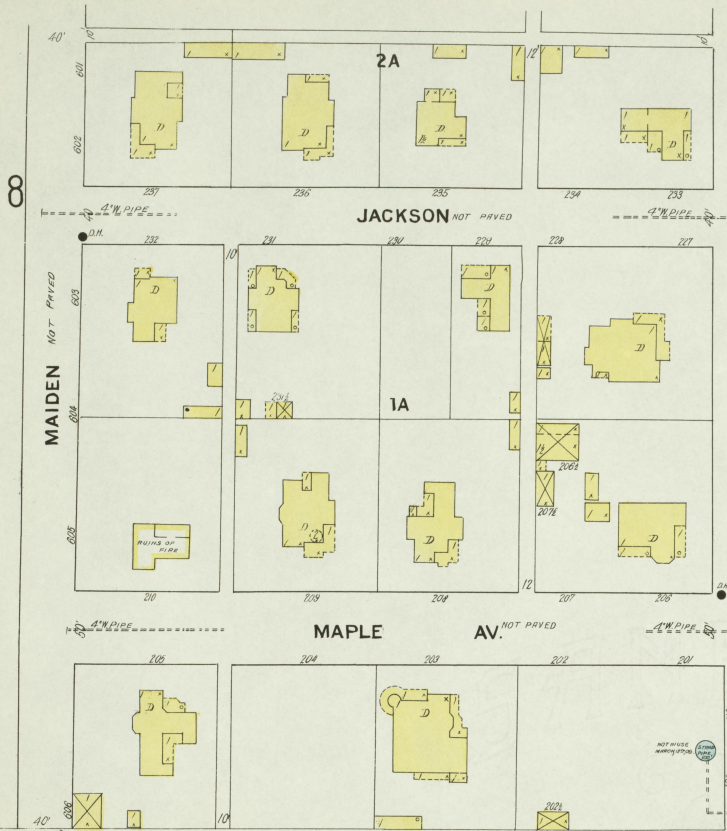
4

4

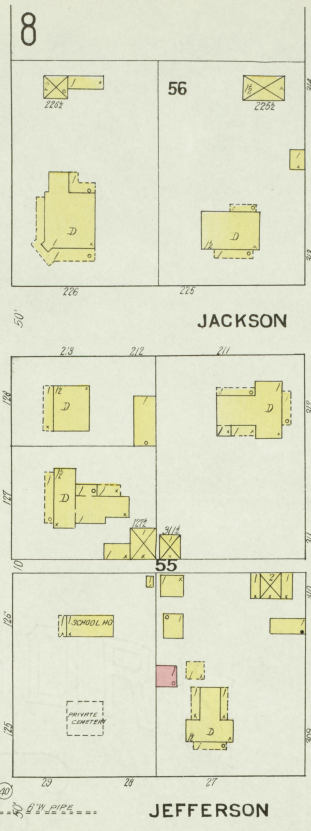
Scale of Feet.
0 50 100 150



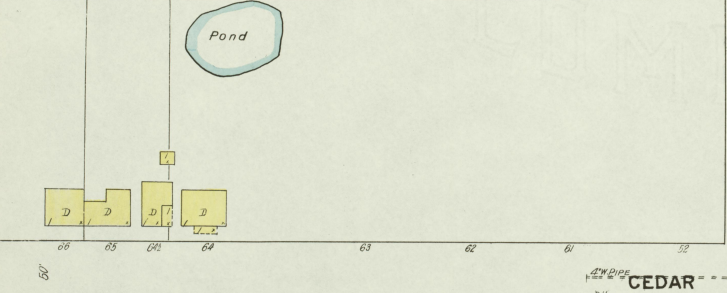
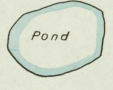
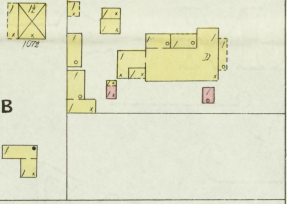
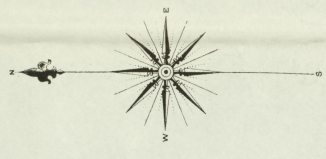
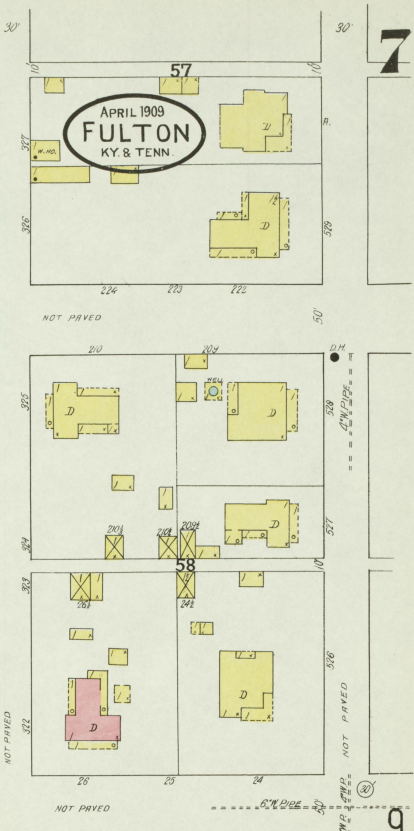
8



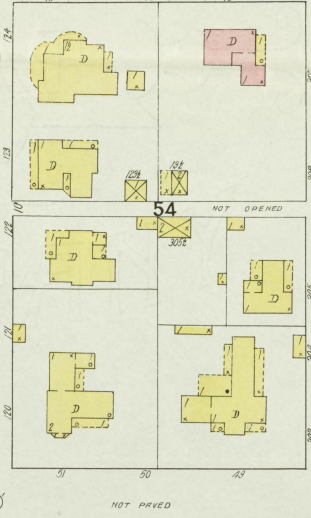
8



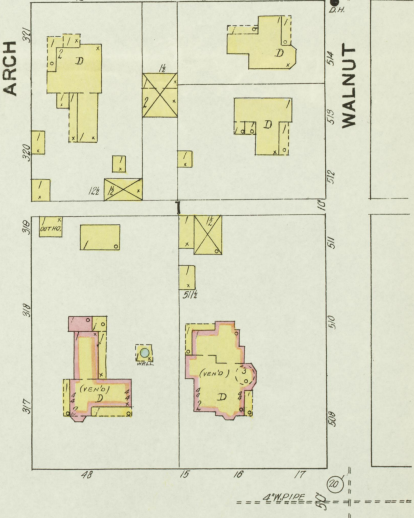
7



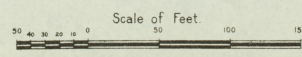
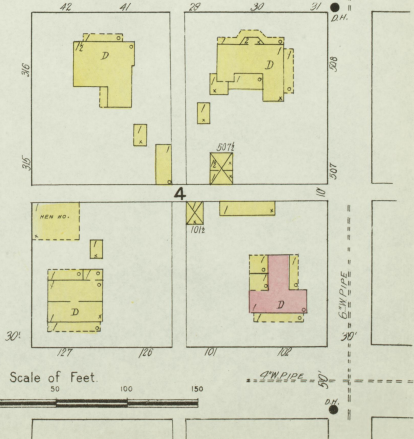
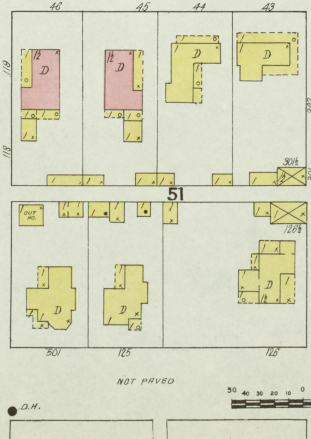
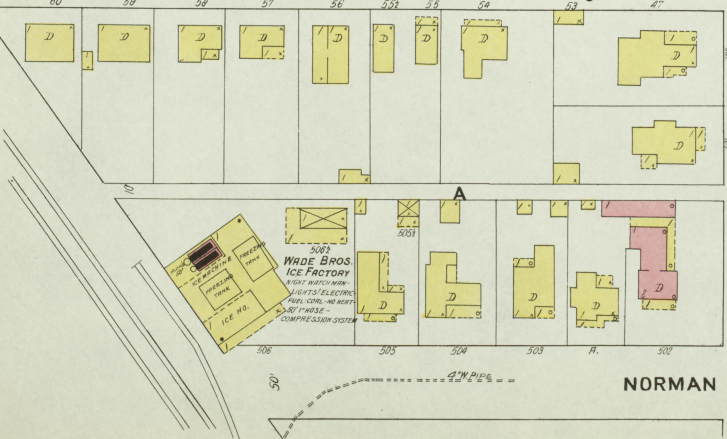
VINE

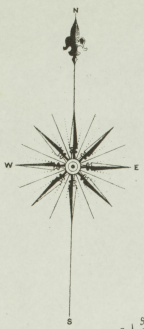


9



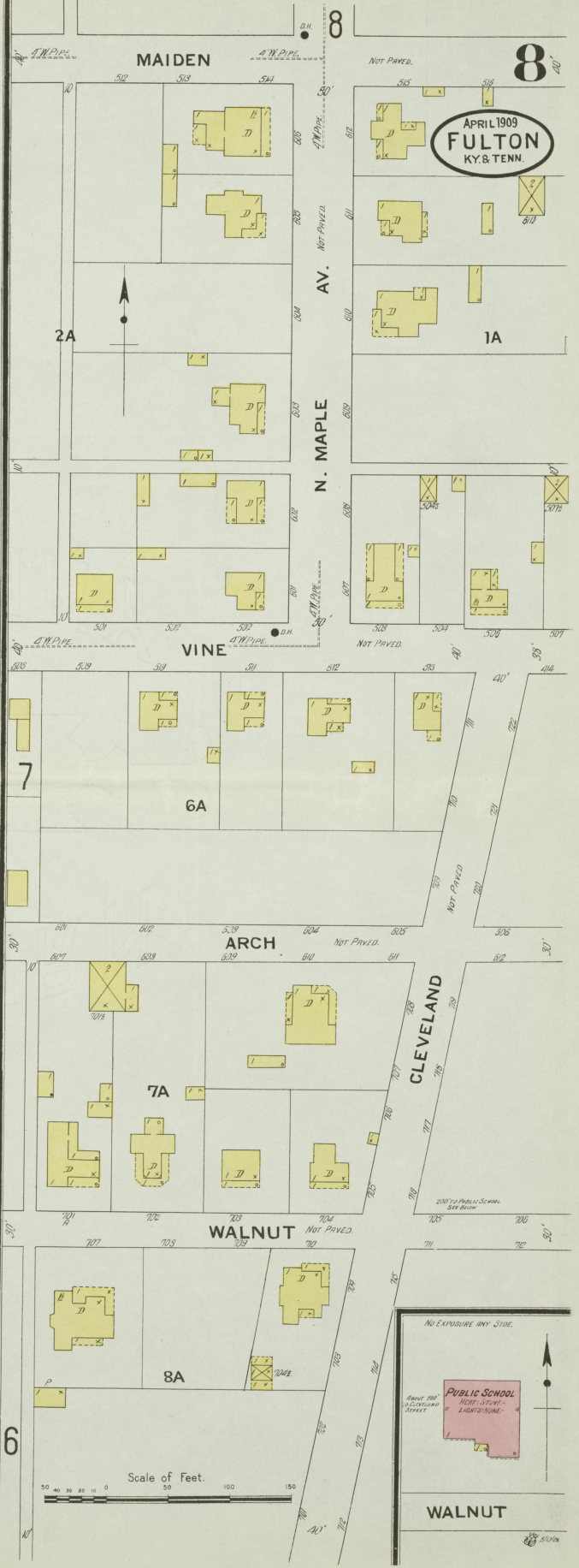
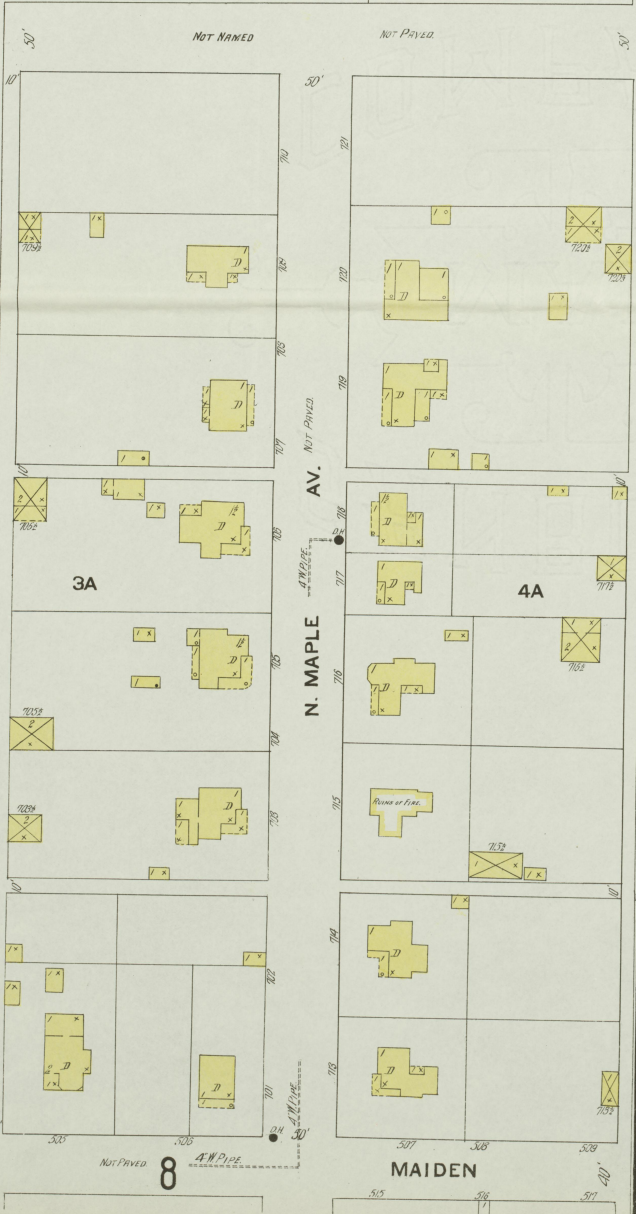
3



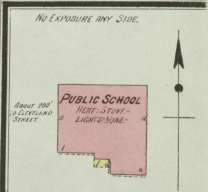
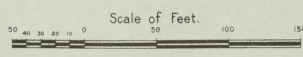


ILLINOIS CENTRAL P. R.

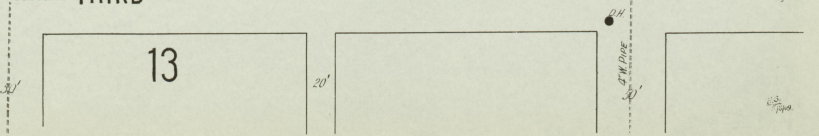
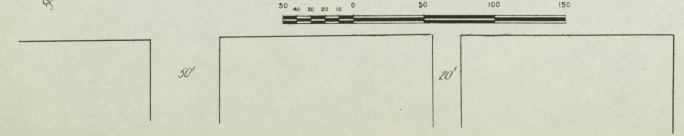
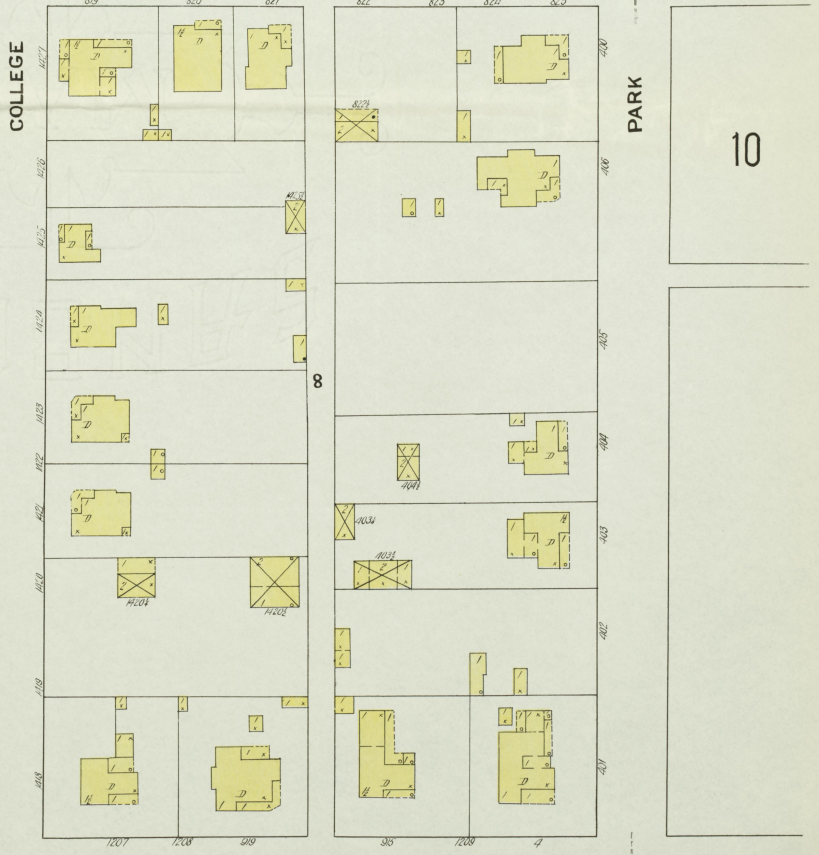
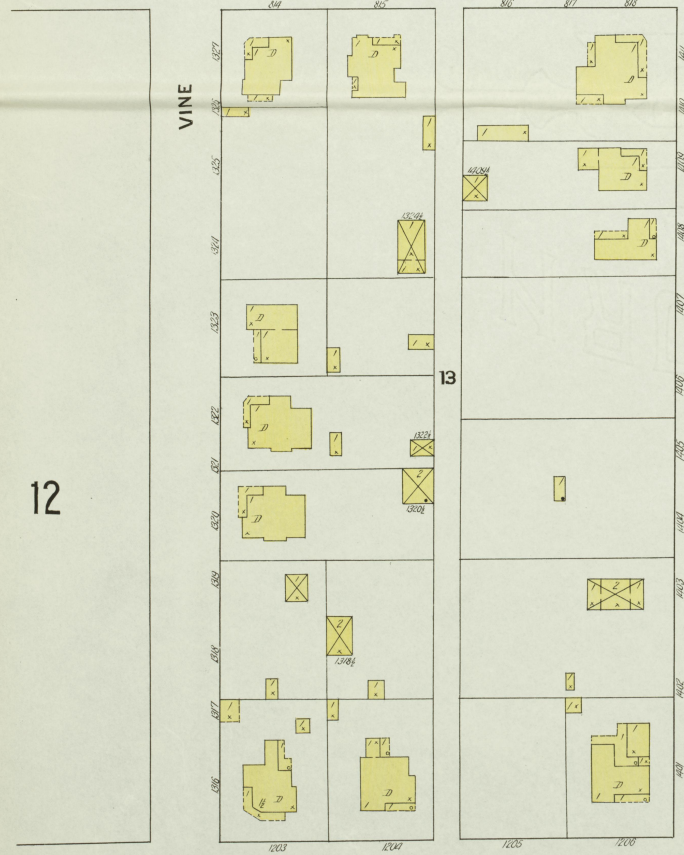
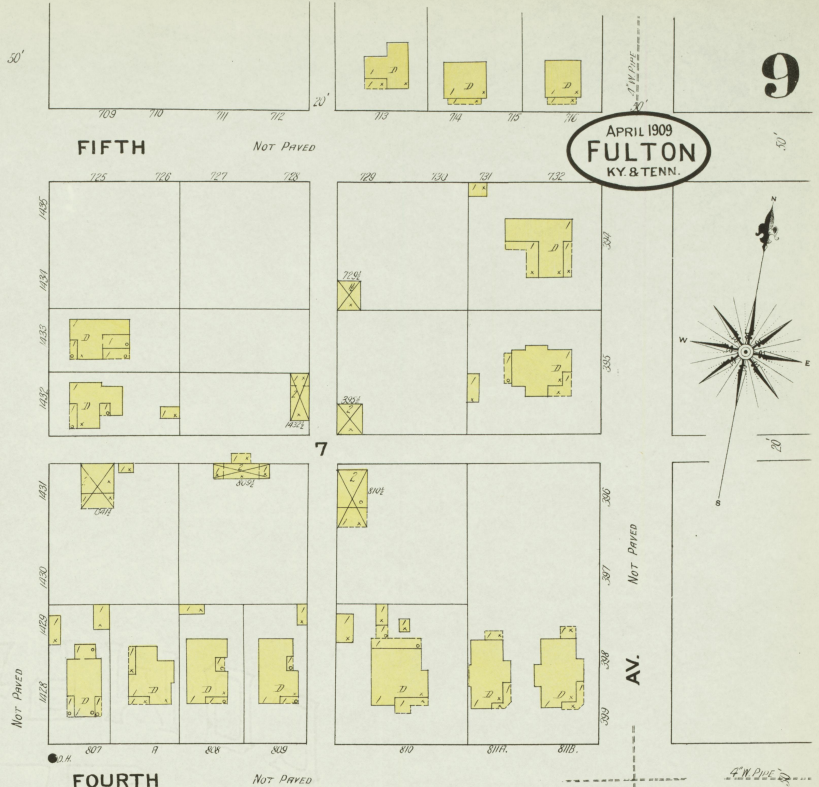
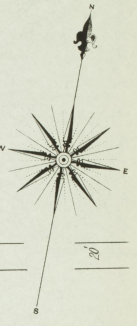
5A



APRIL 1909
FULTON
KY. & TENN.



APRIL 1909
FULTON
 KY. & TENN.



12

14

7

FOURTH

13

8

13

VINE

COLLEGE

PARK

NOT PAVED

NOT PAVED

NOT PAVED

AV.

4 1/2" W. PIPE

D.H.

D.H.

11

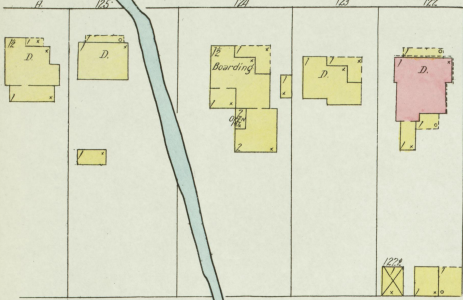
2

10

APRIL 1909
FULTON
KY. & TENN.

CARR

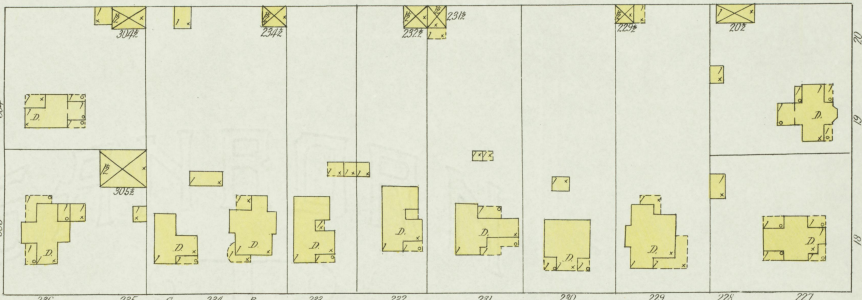
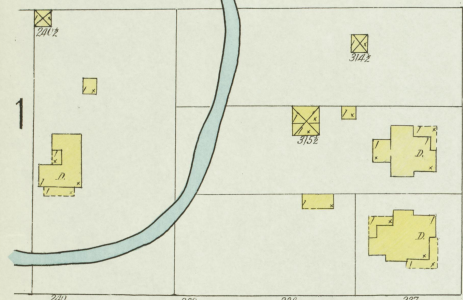
MARSHALIZED



16

19

14

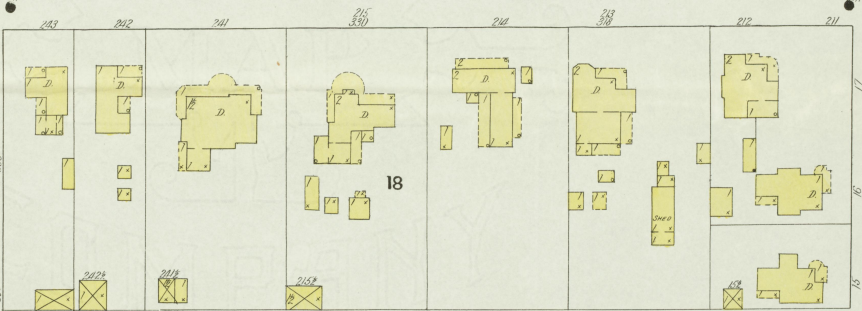
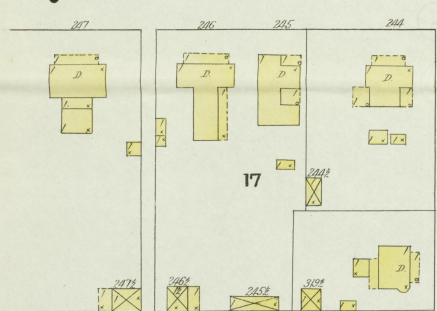


EDDINGS

NOT PAVED

FOURTH

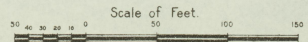
THIRD



PARK

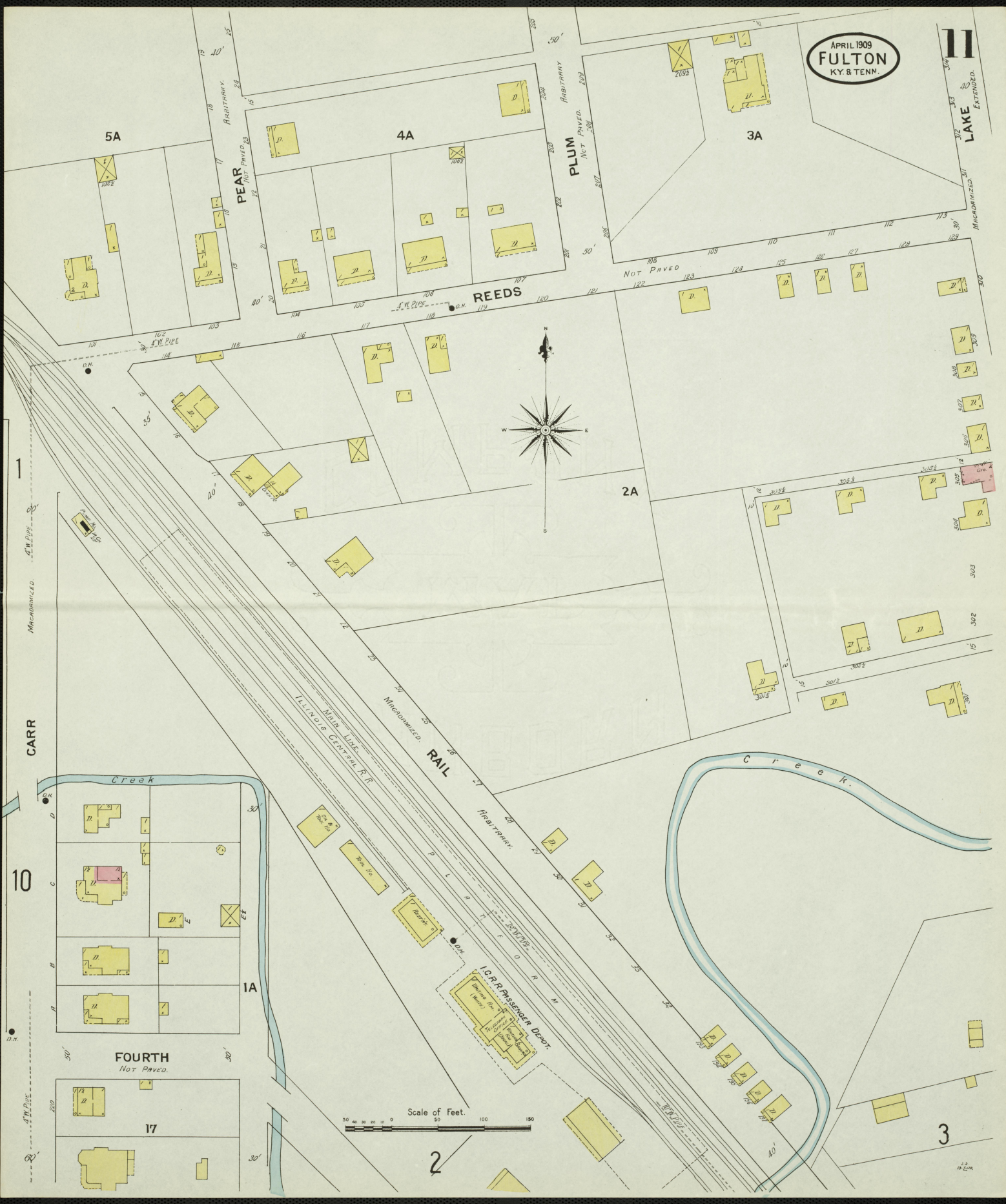
AV. NOT PAVED

9



APRIL 1909
FULTON
KY. & TENN.

SW
3/2
LAKE
EXTENDED
SE
MECHANIZED 3/1



Scale of Feet.
0 20 40 60 80 100 120 140 150

1
MECHANIZED
4" W. PIPE
CARR

10

5A

4A

3A

REEDS

2A

FOURTH
NOT PAVED.

17

3



9

VINE

NOT PAVED

13

12

APRIL 1909
FULTON
KY. & TENN.

FOURTH

NOT PAVED

THIRD

NOT PAVED

GREEN

12

FULTON MFG CO.
BEST WEST COASTERS - NO. 12 CLOCKS -
55" SQUARE - FULL CORNER -
LIGHTS ETC.

NO EXPOSURE ANY SIDE.

Office
Packhouse
MILL
Saw Mill
25' x 25' x 25' HIGH
25' x 25' x 25' HIGH
FINISHING & PACKING 25'

POLK

8A

7A

13

VINE

NOT PAVED

CROW ST

16

STATE LINE NOT PAVED

POLK ST.

15

12

GREEN

SECOND

POLK

NOT PAVED

1A

2A

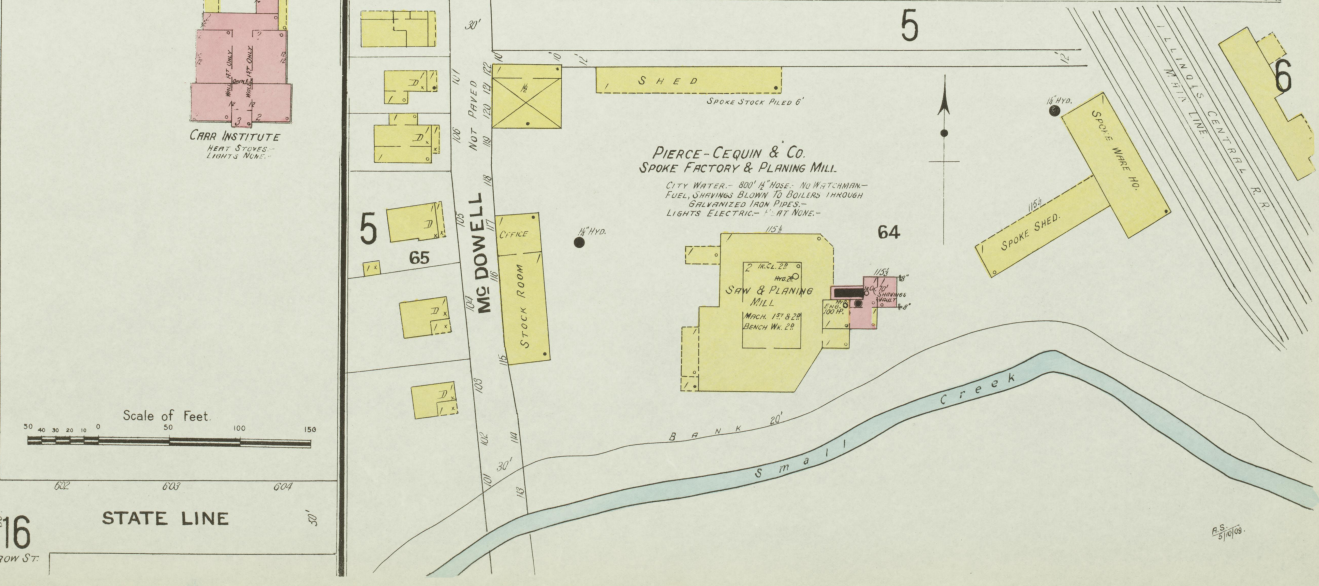
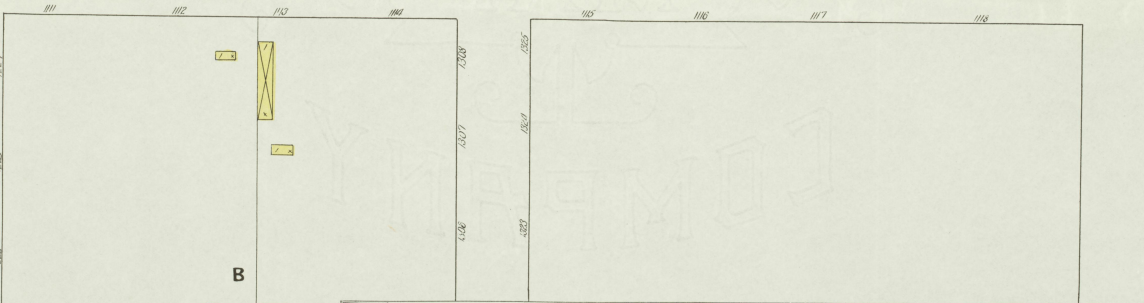
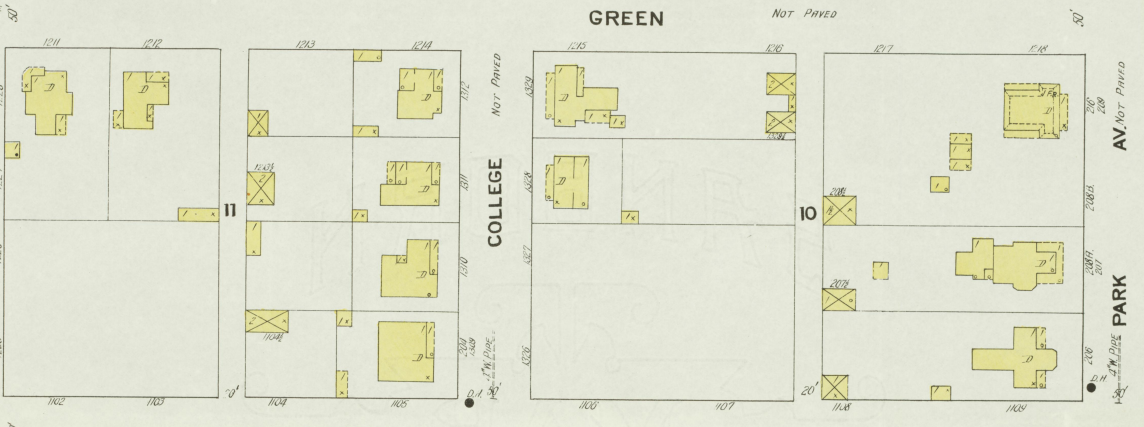
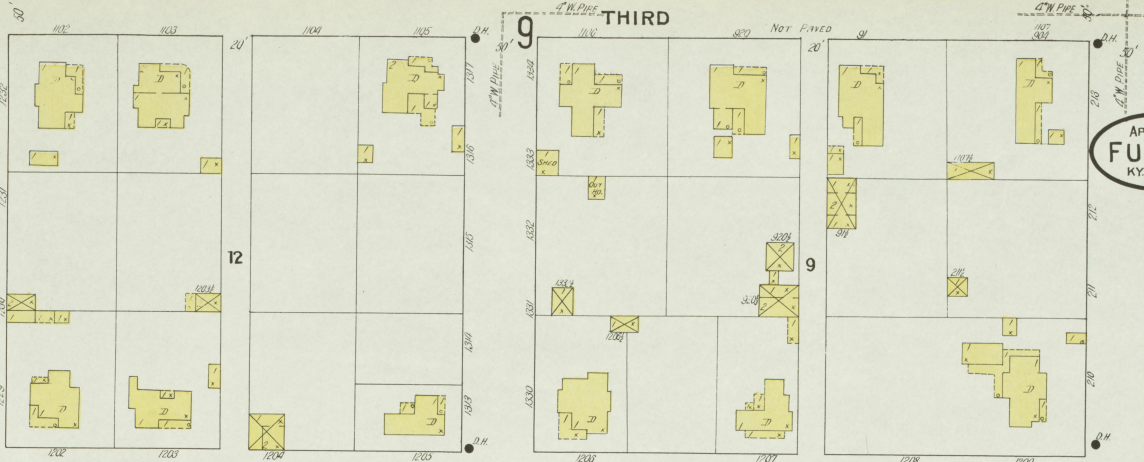
4A

3A

Scale of Feet.
0 50 100 150

13

APRIL 1909
FULTON
KY. & TENN.



APRIL 1909
FULTON
KY. & TENN.

14

10

THIRD

MECHANIZED

21

20

GREEN

NOT PAVED

13

1

22

EDDINGS

CARR

2

FIELD'S HAMLETT CO.
TOBACCO PRIZING.
415 S. MAIN.
HIGH STORIES.
NO WALKERS.

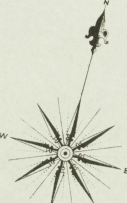
SECOND

NOT PAVED

23

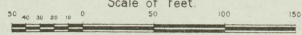
CHRISTIAN CHURCH
157 S. STONE
LUMBER SHED
W. ST. ENDS

PARK



22 1/2

Scale of Feet.

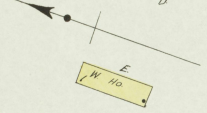
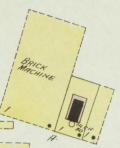


17 STATE LINE

NOT PAVED.

J.G.
8.200

G. H. BRANSFORD & SONS
BRICK YARD
No WITCHAMUN - No FIRE BRD
FUEL COAL - NO LIGHT - CITY WATER
No Exposure Any Side

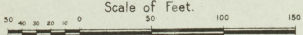


SO. FULTON INSTITUTE



2A

Scale of Feet.



8A

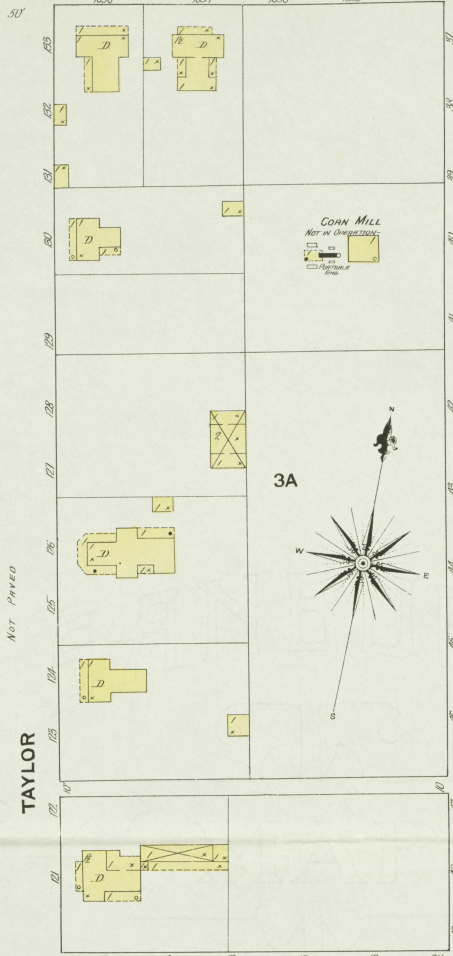
STATE

LINE

12

15

APRIL 1909
FULTON
KY. TENN.

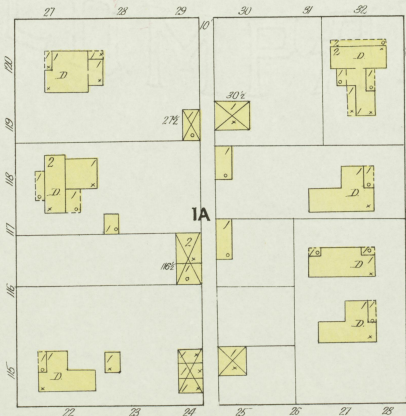


3A

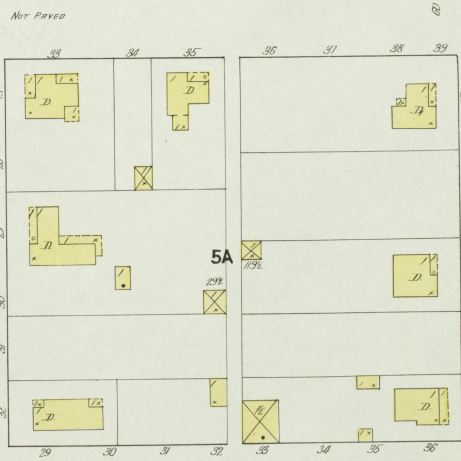


4A

NUT
ARBITRARY

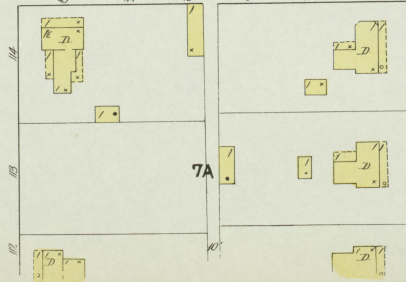


1A

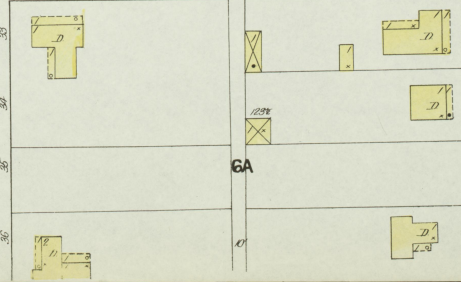


5A

GRAIN
ARBITRARY



7A



6A

TAYLOR

DUCK

POLK

16

12

VINE ST

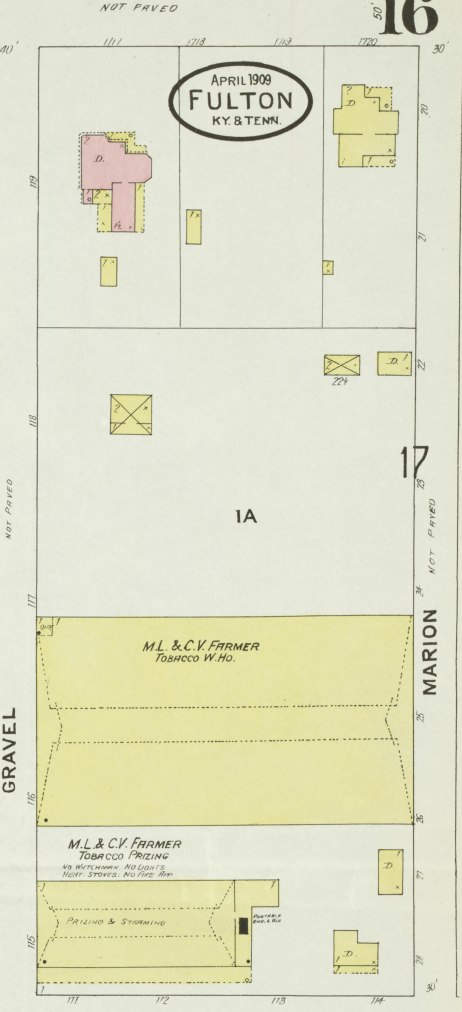
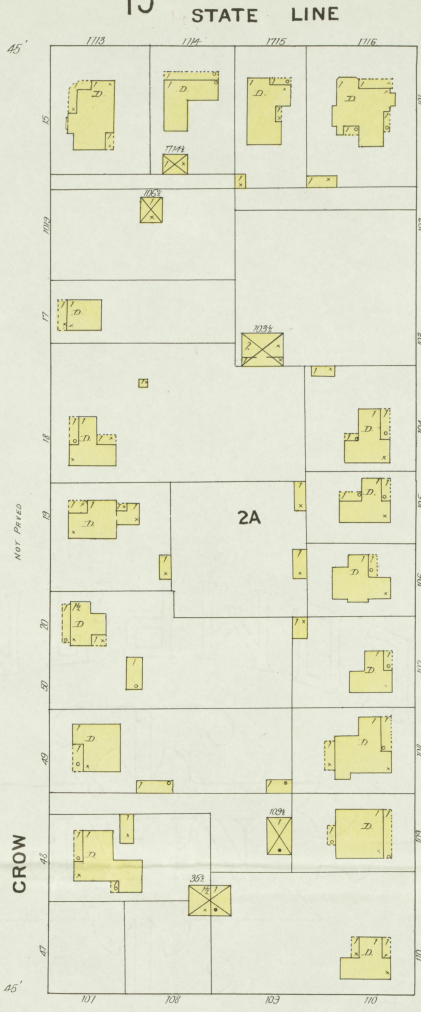
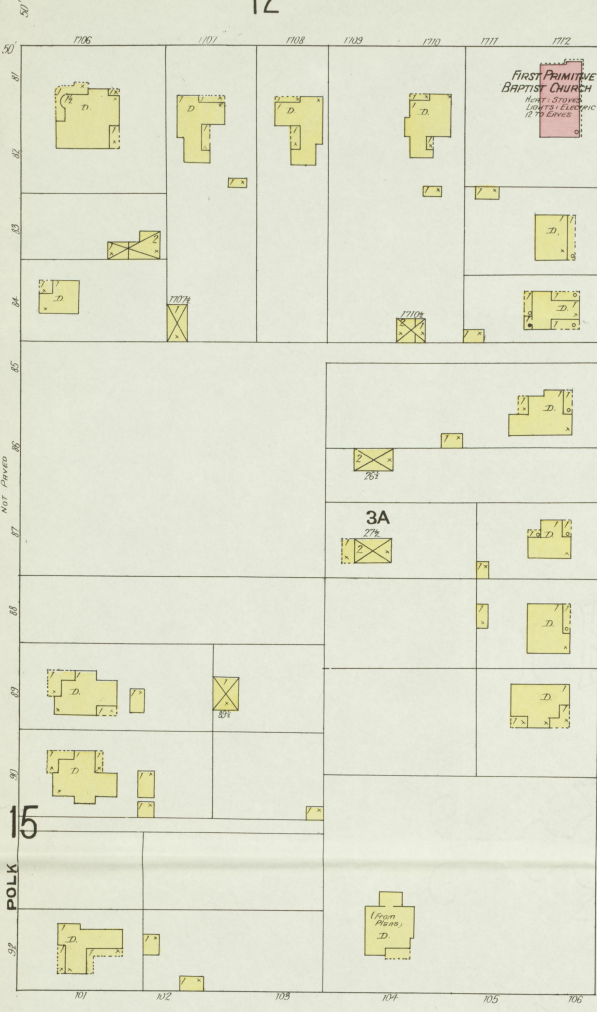
13

STATE LINE

COLLEGE ST

16

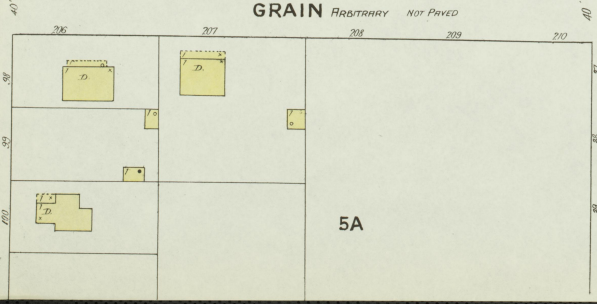
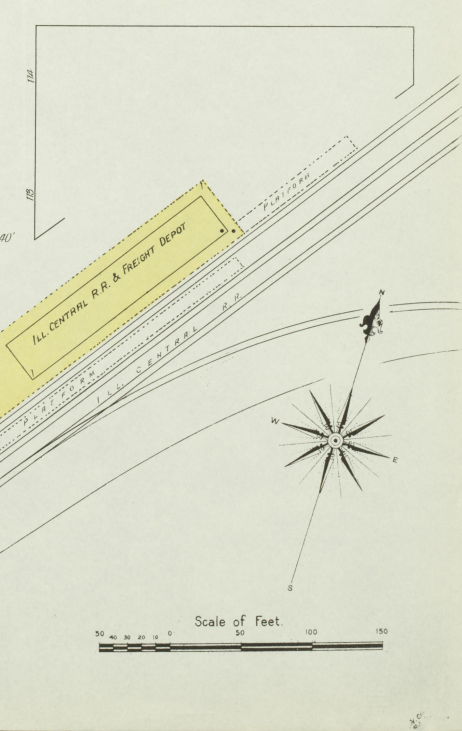
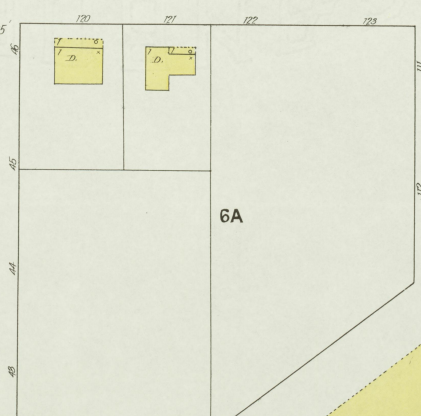
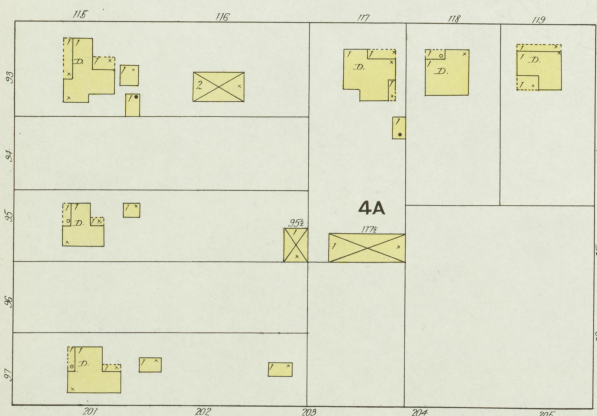
NOT PAVED



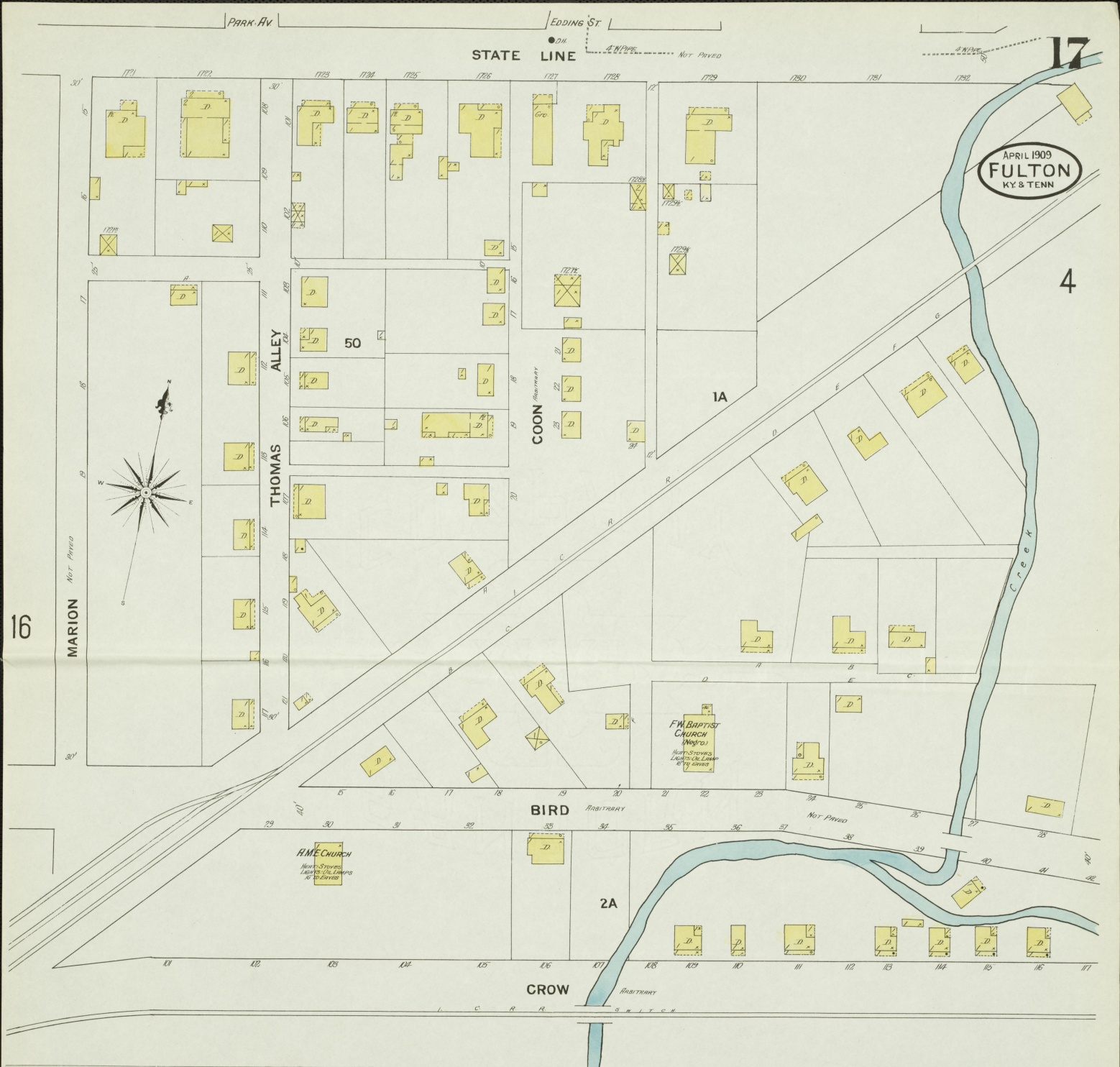
15

NUT ARBITRARY

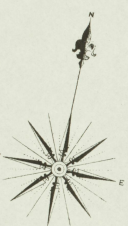
NOT PAVED



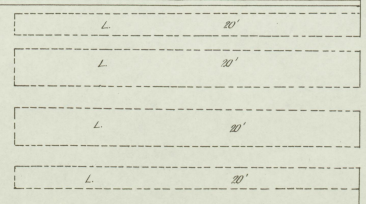
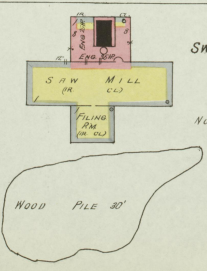
Scale of Feet



APRIL 1909
FULTON
 KY & TENN



SWAIN - KARMIRE LUMBER CO
SAW MILL & LUMBER YARD
 NIGHT WATCHMAN - NO CLOCK -
 30' W. BUSH - BARRILS & BUCKETS -
 FUEL - SAWDUST - & WOOD - HEAT STOVES -
 LIGHTS - OIL LAMPS - POWER STERN -
 NO EXPOSURE ANY SIDE



CHURCH

