

INSURANCE MAP OF Bowling Green of KENTUCKY COUNTY

SANBORN MAP COMPANY
11 Broadway, New York

SCALE 50 FT TO AN INCH
Oct. 1914

Copyright 1914, by the Sanborn Map Co. C.D.F. 26857

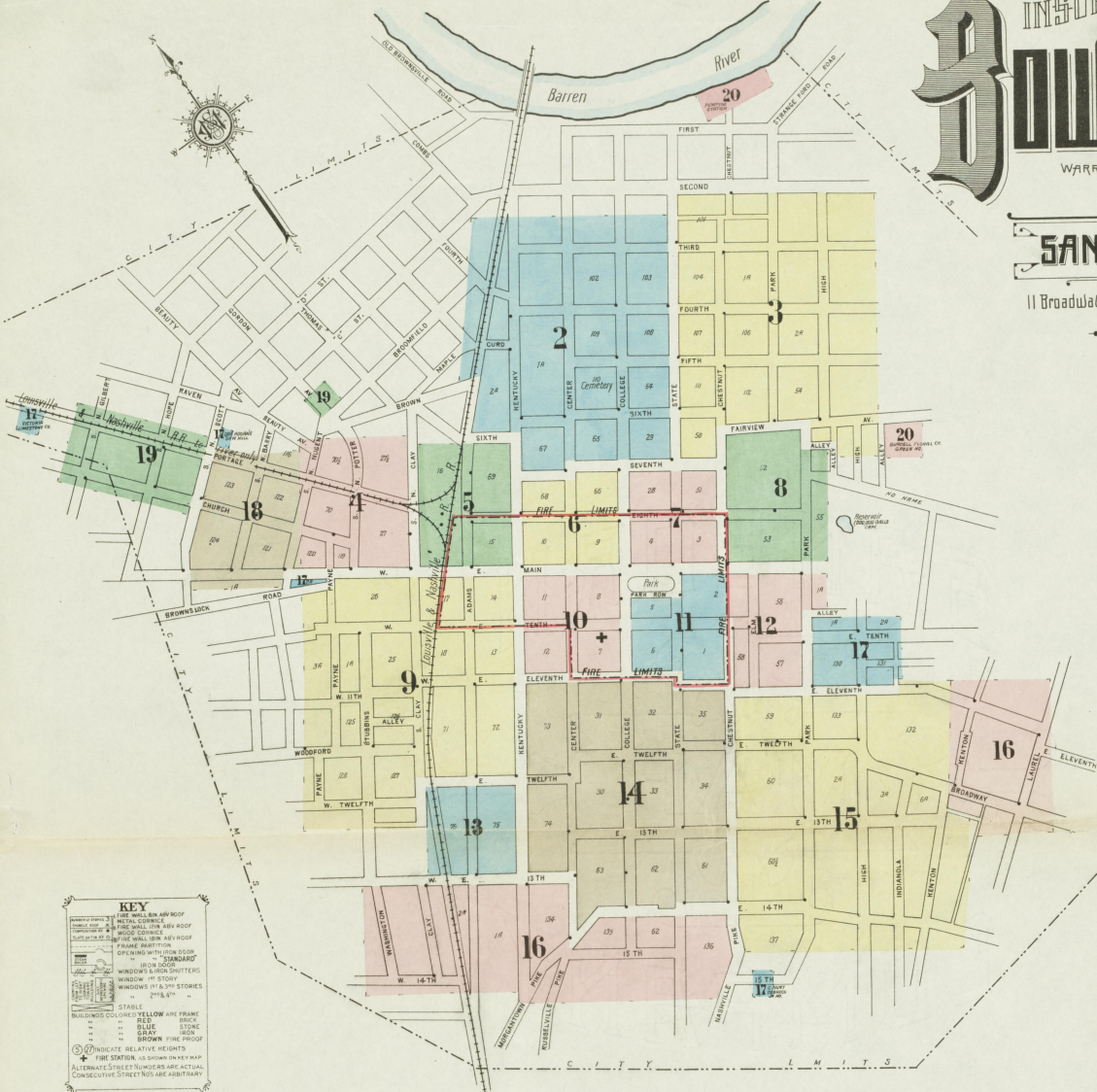
Population 15000. Prevailing Winds, S.W.

WATER FACILITIES.

Gravity and direct pressure system of water works installed in 1875 takes supply from Barren River pumped to reservoir of one million galls. Capacity, elevated 135 ft. above Main and State Sts. and directly into mains by one 14-inch pump carry two million galls, and one 12-inch pump, 100 feet million galls, per an hrs. 20 miles of water pipes, 4" to 16" diam. 193 Hydrants. Direct pressure during the day suffices to reserve, average pressure 65 lbs. Average daily consumption 700,000 galls.

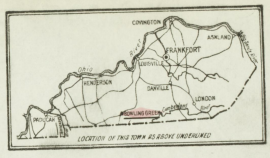
FIRE DEPARTMENT.

One chief and 10 paid men, three companies. Six horses. One Phoenix-Max Model 1/2 combination motor; hose truck with booster pump, 1000 ft. 2 1/2" hose and 500 ft. hose on truck; two combination chemical hose wagons with 50 gal. chemical tank and 220 ft. chemical hose on each; one hand hose reel; one 2-inch hose & ladder; one 1 1/2" hose & ladder. 125 ft. 2 1/2" hose in good condition. 300 ft. of old hose to have 500 ft. of new.
Fire alarm by telephone. Man on duty at desk nights.
Grotes as shown. Streets paved with asphalt and Macadamized. Public lights electric.



KEY

1. FIRE WALLS AND ROOF
2. METAL CORNICE AND ROOF
3. PAINTED WALLS AND ROOF
4. BRICK WALLS AND ROOF
5. FRAME PARTITION
6. OPENINGS WITH SHUTTERS
7. IRON AND STEEL DOORS
8. WINDOWS AND SHUTTERS
9. WINDOW 10 STORY
10. WINDOWS 15 STORY
11. 2" & 4" STILES
12. STAIRS
13. FOUNDATION YELLOW AND FRAME
14. BLUE
15. RED
16. STONE
17. SAND
18. BROWN
19. FINE PROOF
20. FIRE STATION, AS SHOWN ON RECAP
21. ALTERNATE STREET NUMBERS ARE ACTUAL, CONSECUTIVE STREET NUMBERS ARE ARBITRARY



INDEX

STREETS	SHEET	STREETS	SHEET	STREETS	SHEET	STREETS	SHEET
Adams, A	210-420	College, E	701-841	Kenton, K	1020-1120	Thirteenth, E	300-320
Barren River Pike, B	100-150	Eleventh, E	1-140	Drive, K	1020-1120	Coca-Cola Bottling Works, S	100-200
Barry, N	700-800	Fourth, E	200-300	Row, K	400-440	College Street Public School, S	100-200
Beatty Ave., S	800-850	Fifth, E	300-400	Payne, K	1200-1215	County Court House and Jail, S	100-200
Boat Landing Road, S	800-850	Sixth, E	400-500	1216-1218, K	1216-1218	Cumberland Presbyterian Church, College St., S	100-200
Broadway, S	800-850	Seventh, E	500-600	200-212, K	200-212	Three Springs Road, S	900-911
Broomfield, S	800-850	Eighth, E	600-700	614-648, K	614-648	Tweeth, E, S	1-134 & 13
Brown, S	800-850	Ninth, E	700-800	615-845, K	615-845	W, S	300-330
Brown Lock Road, S & 17	100-140	Tenth, E	800-900	100-103, K	100-103	Washington, W	1300-1370
Center, C	210-420	Eleventh, E	900-1000	1100-1220, K	1100-1220	Wassa Place (arbitrary), W	600-613
Church, C	210-420	Twelfth, E	1000-1100	1200-1250, K	1200-1250	Woodford, W	100-210
Clay, N	100-110	Thirteenth, E	1100-1200	1300-1390, K	1300-1390	Laurel, L	1024-1225
College, C	210-420	Fourteenth, E	1200-1300	1400-1500, K	1400-1500	Louisville and Nashville Pike, L	1024-1225
Club Alley (arbitrary), C	210-420	Fifteenth, E	1300-1400	1600-1620, K	1600-1620	Main, E, M	1-143
College, C	210-420	Sixteenth, E	1400-1500	1700-1800, K	1700-1800	1-242, K	1-242
		Seventeenth, E	1500-1600	1800-1810, K	1800-1810	1-300, K	1-300
		Eighteenth, E	1600-1700	1810-1819, K	1810-1819	1-320, K	1-320
		Nineteenth, E	1700-1800	1820-1830, K	1820-1830	1-380, K	1-380
		Twentieth, E	1800-1900	1830-1840, K	1830-1840	1-400, K	1-400
		Twenty-first, E	1900-2000	1840-1849, K	1840-1849	1-420, K	1-420
		Twenty-second, E	2000-2100	1850-1859, K	1850-1859	1-440, K	1-440
		Twenty-third, E	2100-2200	1860-1869, K	1860-1869	1-460, K	1-460
		Twenty-fourth, E	2200-2300	1870-1879, K	1870-1879	1-480, K	1-480
		Twenty-fifth, E	2300-2400	1880-1889, K	1880-1889	1-500, K	1-500
		Twenty-sixth, E	2400-2500	1890-1899, K	1890-1899	1-520, K	1-520
		Twenty-seventh, E	2500-2600	1900-1909, K	1900-1909	1-540, K	1-540
		Twenty-eighth, E	2600-2700	1910-1919, K	1910-1919	1-560, K	1-560
		Twenty-ninth, E	2700-2800	1920-1929, K	1920-1929	1-580, K	1-580
		Thirtieth, E	2800-2900	1930-1939, K	1930-1939	1-600, K	1-600
		Thirty-first, E	2900-3000	1940-1949, K	1940-1949	1-620, K	1-620
		Thirty-second, E	3000-3100	1950-1959, K	1950-1959	1-640, K	1-640
		Thirty-third, E	3100-3200	1960-1969, K	1960-1969	1-660, K	1-660
		Thirty-fourth, E	3200-3300	1970-1979, K	1970-1979	1-680, K	1-680
		Thirty-fifth, E	3300-3400	1980-1989, K	1980-1989	1-700, K	1-700
		Thirty-sixth, E	3400-3500	1990-1999, K	1990-1999	1-720, K	1-720
		Thirty-seventh, E	3500-3600	2000-2009, K	2000-2009	1-740, K	1-740
		Thirty-eighth, E	3600-3700	2010-2019, K	2010-2019	1-760, K	1-760
		Thirty-ninth, E	3700-3800	2020-2029, K	2020-2029	1-780, K	1-780
		Fortieth, E	3800-3900	2030-2039, K	2030-2039	1-800, K	1-800
		Forty-first, E	3900-4000	2040-2049, K	2040-2049	1-820, K	1-820
		Forty-second, E	4000-4100	2050-2059, K	2050-2059	1-840, K	1-840
		Forty-third, E	4100-4200	2060-2069, K	2060-2069	1-860, K	1-860
		Forty-fourth, E	4200-4300	2070-2079, K	2070-2079	1-880, K	1-880
		Forty-fifth, E	4300-4400	2080-2089, K	2080-2089	1-900, K	1-900
		Forty-sixth, E	4400-4500	2090-2099, K	2090-2099	1-920, K	1-920
		Forty-seventh, E	4500-4600	2100-2109, K	2100-2109	1-940, K	1-940
		Forty-eighth, E	4600-4700	2110-2119, K	2110-2119	1-960, K	1-960
		Forty-ninth, E	4700-4800	2120-2129, K	2120-2129	1-980, K	1-980
		Fiftieth, E	4800-4900	2130-2139, K	2130-2139	1-1000, K	1-1000

* Indicates only one side of Street shown.

OCT. 1914
BOWLING GREEN
KY.

PROX CITY MILLING CO
BOWLING GREEN, KY.
MILLS
No. 1
No. 2
No. 3
No. 4
No. 5
No. 6
No. 7
No. 8
No. 9
No. 10
No. 11
No. 12
No. 13
No. 14
No. 15
No. 16
No. 17
No. 18
No. 19
No. 20
No. 21
No. 22
No. 23
No. 24
No. 25
No. 26
No. 27
No. 28
No. 29
No. 30
No. 31
No. 32
No. 33
No. 34
No. 35
No. 36
No. 37
No. 38
No. 39
No. 40
No. 41
No. 42
No. 43
No. 44
No. 45
No. 46
No. 47
No. 48
No. 49
No. 50
No. 51
No. 52
No. 53
No. 54
No. 55
No. 56
No. 57
No. 58
No. 59
No. 60
No. 61
No. 62
No. 63
No. 64
No. 65
No. 66
No. 67
No. 68
No. 69
No. 70
No. 71
No. 72
No. 73
No. 74
No. 75
No. 76
No. 77
No. 78
No. 79
No. 80
No. 81
No. 82
No. 83
No. 84
No. 85
No. 86
No. 87
No. 88
No. 89
No. 90
No. 91
No. 92
No. 93
No. 94
No. 95
No. 96
No. 97
No. 98
No. 99
No. 100

SCALE 100 FT TO AN INCH

WARREN COUNTY LEAF
TOBACCO WARE HO CO
WARREN CO
Tobacco Warehouse
No. 108
No. 109
No. 110
No. 111
No. 112
No. 113
No. 114
No. 115
No. 116
No. 117
No. 118
No. 119
No. 120
No. 121
No. 122
No. 123
No. 124
No. 125
No. 126
No. 127
No. 128
No. 129
No. 130
No. 131
No. 132
No. 133
No. 134
No. 135
No. 136
No. 137
No. 138
No. 139
No. 140
No. 141
No. 142
No. 143
No. 144
No. 145
No. 146
No. 147
No. 148
No. 149
No. 150
No. 151
No. 152
No. 153
No. 154
No. 155
No. 156
No. 157
No. 158
No. 159
No. 160
No. 161
No. 162
No. 163
No. 164
No. 165
No. 166
No. 167
No. 168
No. 169
No. 170
No. 171
No. 172
No. 173
No. 174
No. 175
No. 176
No. 177
No. 178
No. 179
No. 180
No. 181
No. 182
No. 183
No. 184
No. 185
No. 186
No. 187
No. 188
No. 189
No. 190
No. 191
No. 192
No. 193
No. 194
No. 195
No. 196
No. 197
No. 198
No. 199
No. 200

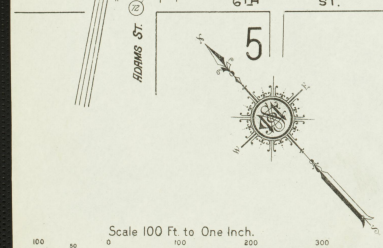
FL KISTER
FURNITURE MFG & PLANNING MFG
No. 29
No. 30
No. 31
No. 32
No. 33
No. 34
No. 35
No. 36
No. 37
No. 38
No. 39
No. 40
No. 41
No. 42
No. 43
No. 44
No. 45
No. 46
No. 47
No. 48
No. 49
No. 50
No. 51
No. 52
No. 53
No. 54
No. 55
No. 56
No. 57
No. 58
No. 59
No. 60
No. 61
No. 62
No. 63
No. 64
No. 65
No. 66
No. 67
No. 68
No. 69
No. 70
No. 71
No. 72
No. 73
No. 74
No. 75
No. 76
No. 77
No. 78
No. 79
No. 80
No. 81
No. 82
No. 83
No. 84
No. 85
No. 86
No. 87
No. 88
No. 89
No. 90
No. 91
No. 92
No. 93
No. 94
No. 95
No. 96
No. 97
No. 98
No. 99
No. 100

Scale 100 Ft to One Inch

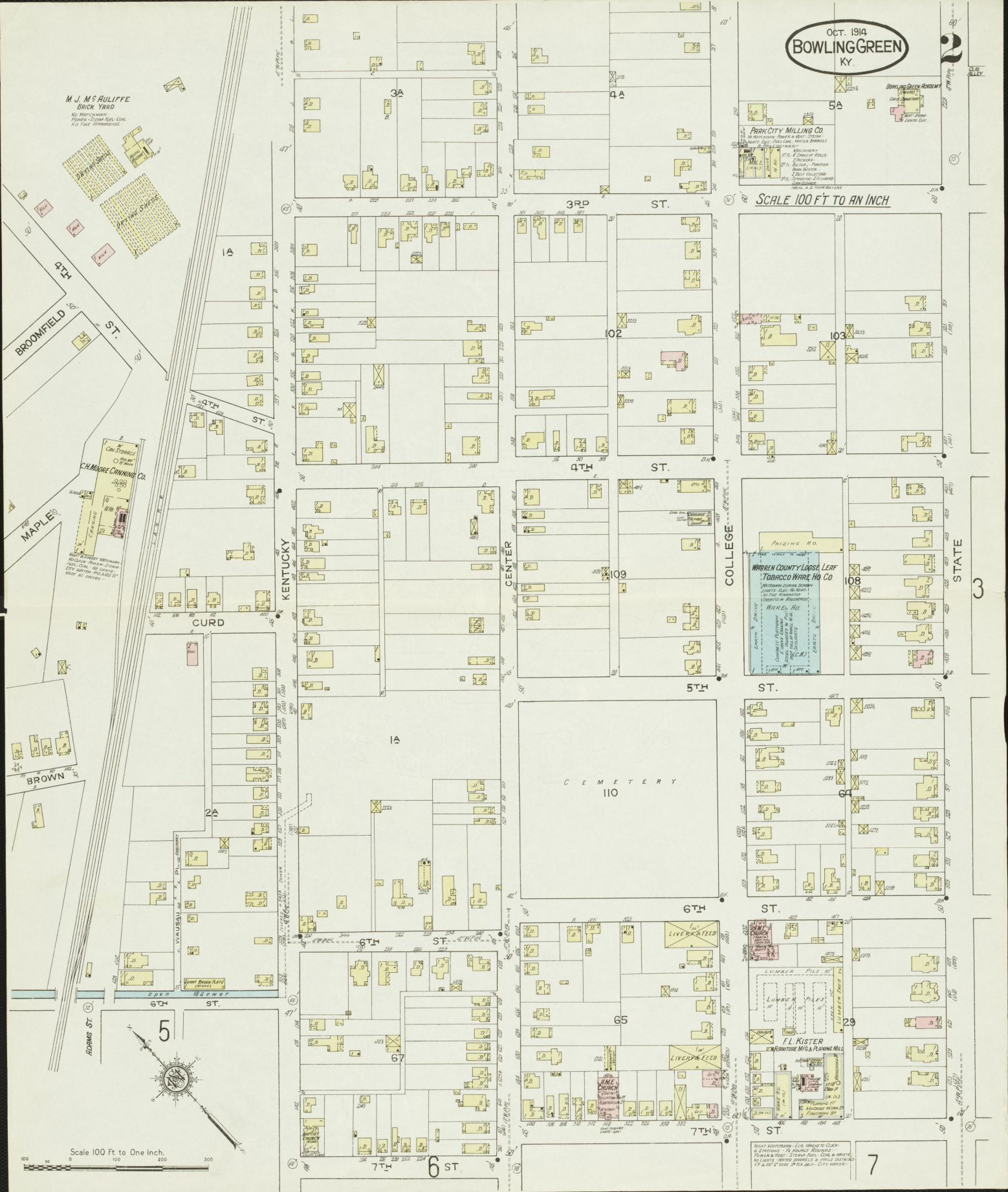
M. J. MC AULIFFE
BRICK YARD
No. 1
No. 2
No. 3
No. 4
No. 5
No. 6
No. 7
No. 8
No. 9
No. 10
No. 11
No. 12
No. 13
No. 14
No. 15
No. 16
No. 17
No. 18
No. 19
No. 20
No. 21
No. 22
No. 23
No. 24
No. 25
No. 26
No. 27
No. 28
No. 29
No. 30
No. 31
No. 32
No. 33
No. 34
No. 35
No. 36
No. 37
No. 38
No. 39
No. 40
No. 41
No. 42
No. 43
No. 44
No. 45
No. 46
No. 47
No. 48
No. 49
No. 50
No. 51
No. 52
No. 53
No. 54
No. 55
No. 56
No. 57
No. 58
No. 59
No. 60
No. 61
No. 62
No. 63
No. 64
No. 65
No. 66
No. 67
No. 68
No. 69
No. 70
No. 71
No. 72
No. 73
No. 74
No. 75
No. 76
No. 77
No. 78
No. 79
No. 80
No. 81
No. 82
No. 83
No. 84
No. 85
No. 86
No. 87
No. 88
No. 89
No. 90
No. 91
No. 92
No. 93
No. 94
No. 95
No. 96
No. 97
No. 98
No. 99
No. 100

CH. MOORE
CANNING CO
No. 1
No. 2
No. 3
No. 4
No. 5
No. 6
No. 7
No. 8
No. 9
No. 10
No. 11
No. 12
No. 13
No. 14
No. 15
No. 16
No. 17
No. 18
No. 19
No. 20
No. 21
No. 22
No. 23
No. 24
No. 25
No. 26
No. 27
No. 28
No. 29
No. 30
No. 31
No. 32
No. 33
No. 34
No. 35
No. 36
No. 37
No. 38
No. 39
No. 40
No. 41
No. 42
No. 43
No. 44
No. 45
No. 46
No. 47
No. 48
No. 49
No. 50
No. 51
No. 52
No. 53
No. 54
No. 55
No. 56
No. 57
No. 58
No. 59
No. 60
No. 61
No. 62
No. 63
No. 64
No. 65
No. 66
No. 67
No. 68
No. 69
No. 70
No. 71
No. 72
No. 73
No. 74
No. 75
No. 76
No. 77
No. 78
No. 79
No. 80
No. 81
No. 82
No. 83
No. 84
No. 85
No. 86
No. 87
No. 88
No. 89
No. 90
No. 91
No. 92
No. 93
No. 94
No. 95
No. 96
No. 97
No. 98
No. 99
No. 100

BROWN
No. 1
No. 2
No. 3
No. 4
No. 5
No. 6
No. 7
No. 8
No. 9
No. 10
No. 11
No. 12
No. 13
No. 14
No. 15
No. 16
No. 17
No. 18
No. 19
No. 20
No. 21
No. 22
No. 23
No. 24
No. 25
No. 26
No. 27
No. 28
No. 29
No. 30
No. 31
No. 32
No. 33
No. 34
No. 35
No. 36
No. 37
No. 38
No. 39
No. 40
No. 41
No. 42
No. 43
No. 44
No. 45
No. 46
No. 47
No. 48
No. 49
No. 50
No. 51
No. 52
No. 53
No. 54
No. 55
No. 56
No. 57
No. 58
No. 59
No. 60
No. 61
No. 62
No. 63
No. 64
No. 65
No. 66
No. 67
No. 68
No. 69
No. 70
No. 71
No. 72
No. 73
No. 74
No. 75
No. 76
No. 77
No. 78
No. 79
No. 80
No. 81
No. 82
No. 83
No. 84
No. 85
No. 86
No. 87
No. 88
No. 89
No. 90
No. 91
No. 92
No. 93
No. 94
No. 95
No. 96
No. 97
No. 98
No. 99
No. 100



Scale 100 Ft to One Inch

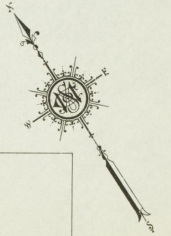


STATE 3

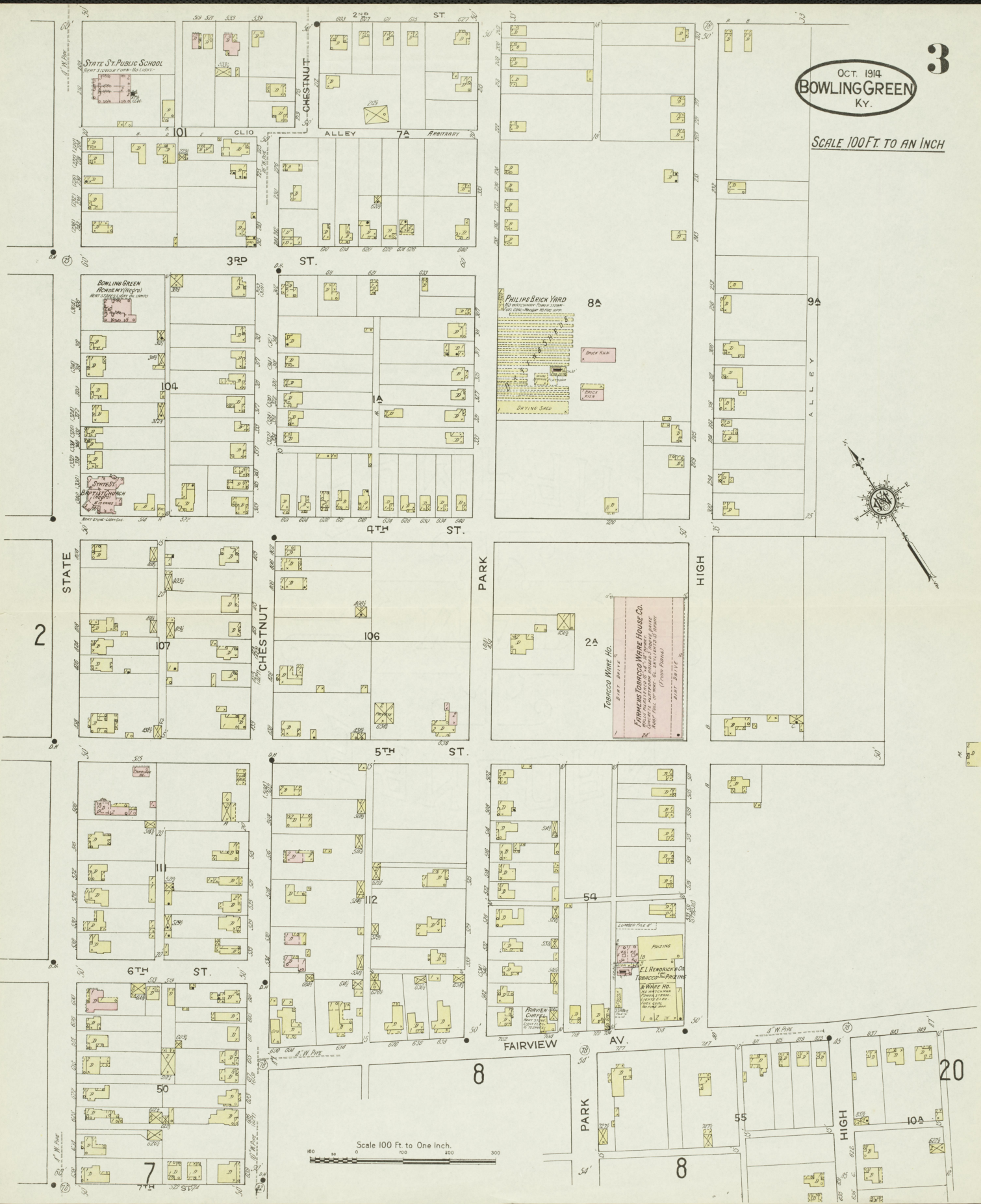
OCT. 1914
BOWLING GREEN
KY.

3

SCALE 100 FT TO AN INCH



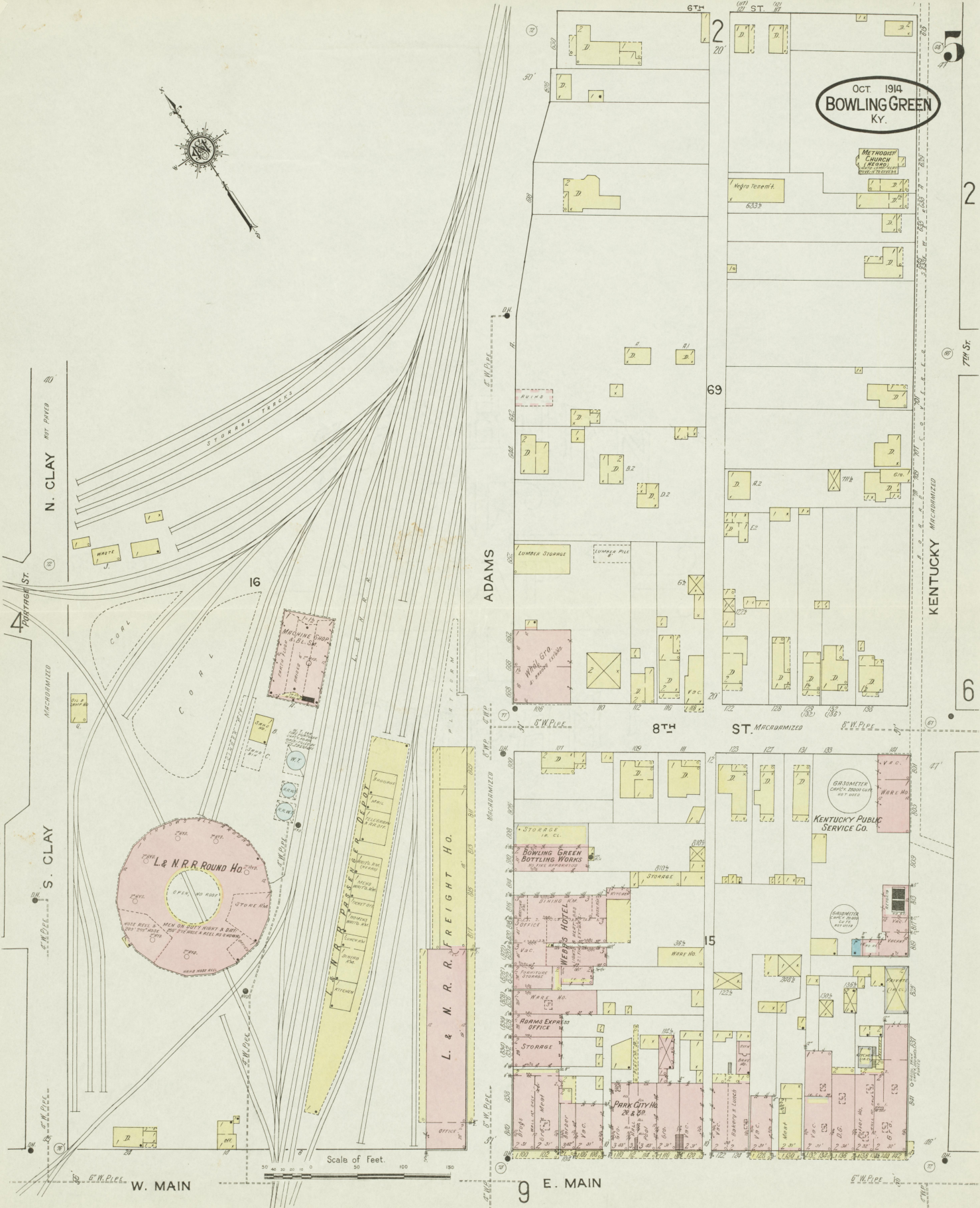
Scale 100 Ft to One Inch.







OCT. 1914
BOWLING GREEN
KY.



Scale of Feet.

5

2

7th St.

KENTUCKY

6

9 E. MAIN

OCT. 1914
BOWLING GREEN
KY.



OCT. 1914
BOWLINGGREEN
KY.



3

2

7TH

ST. MACADAMIZED

6

8TH

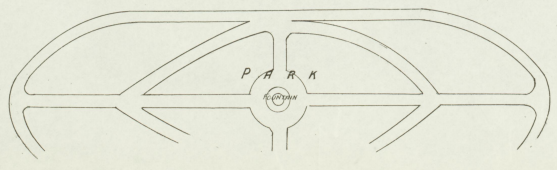
ST. MACADAMIZED

COLLEGE

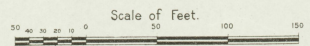
STATE

CHESTNUT

E. MAIN



11



FAIRVIEW AV.

OCT. 1914
BOWLINGGREEN
KY.
3

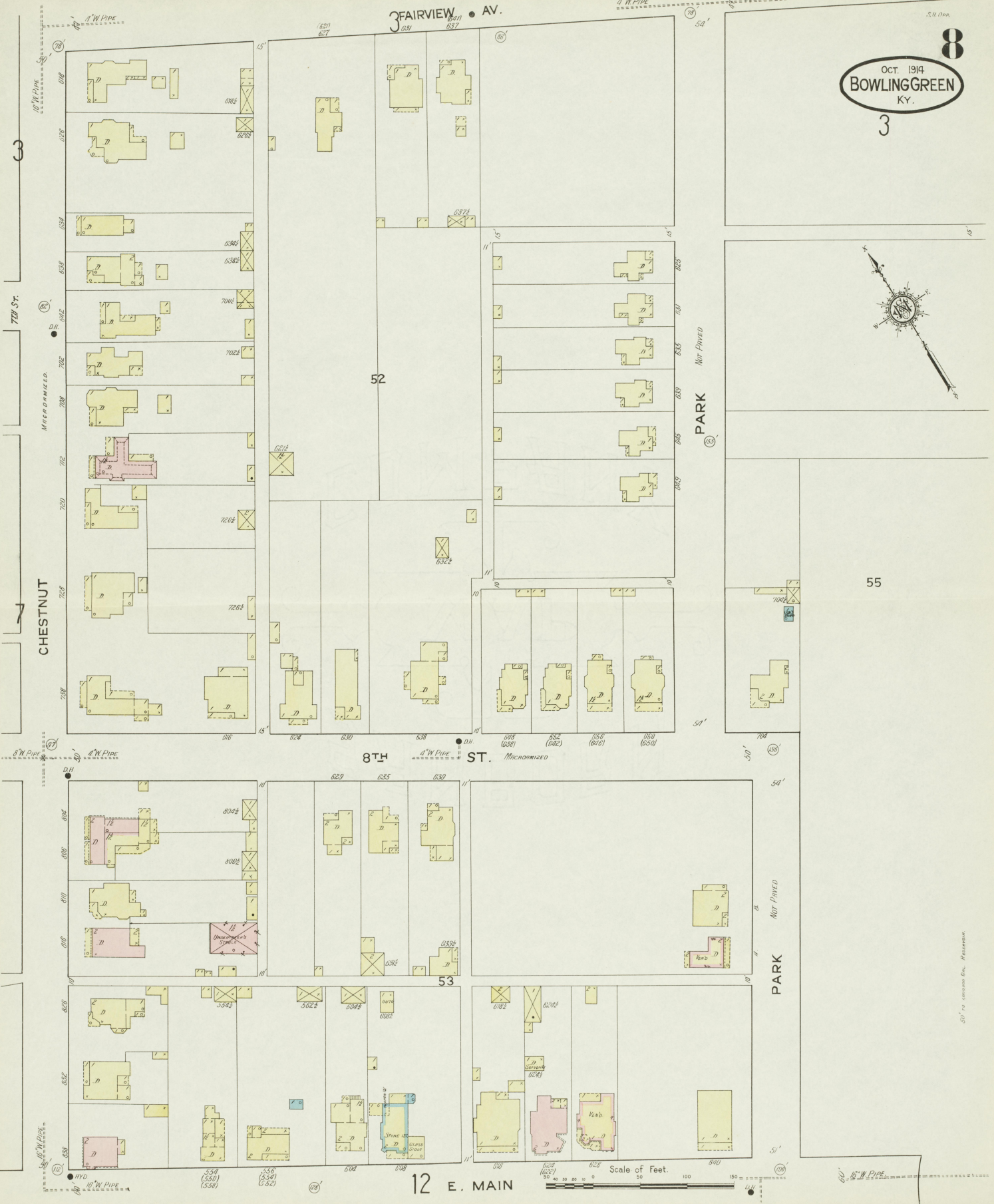
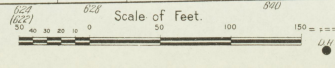
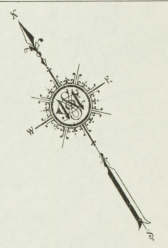
7th St.
Chestnut

Park

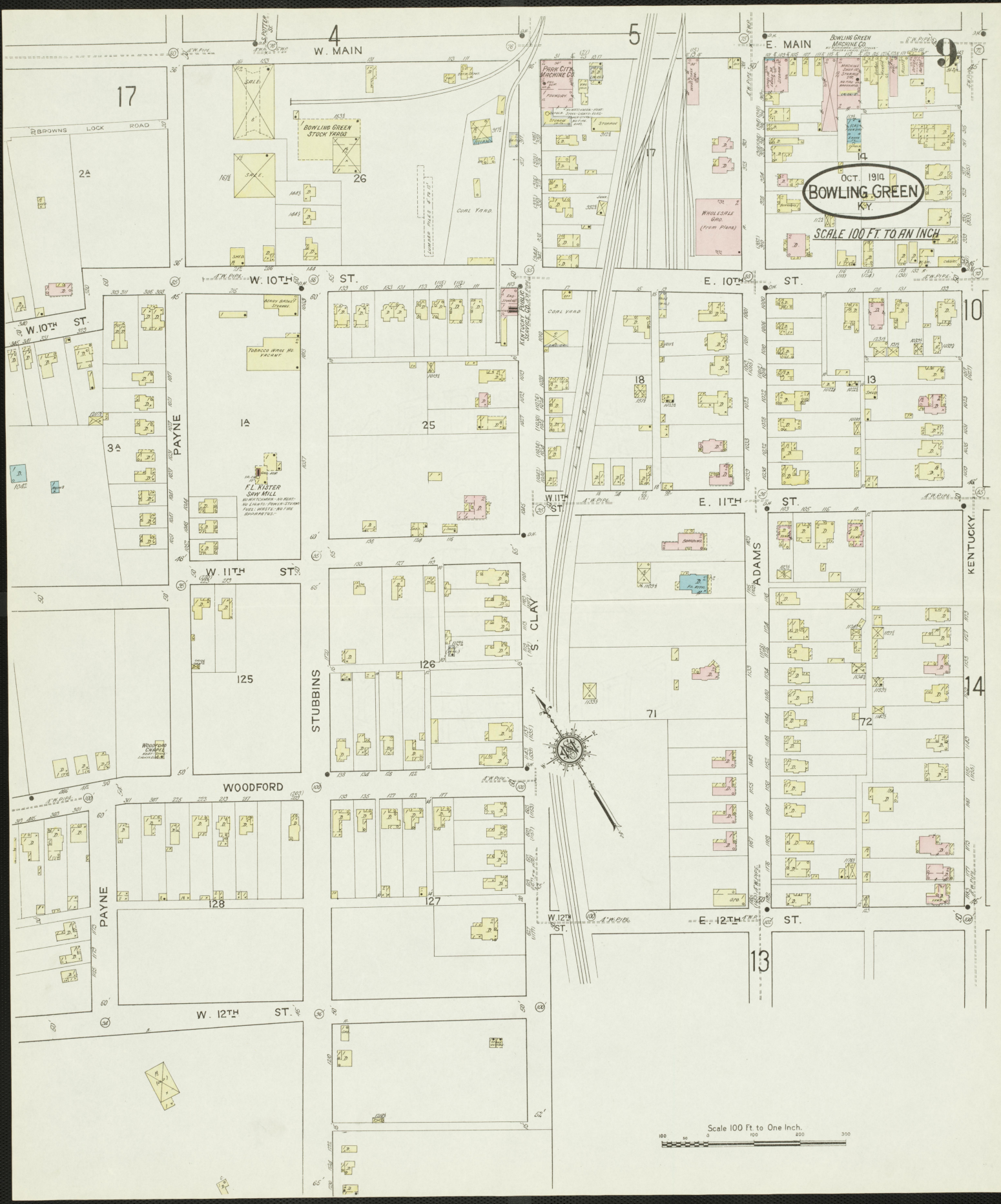
8th St.

Park

12 E. MAIN



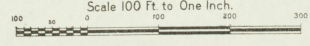
City of Bowling Green, Kentucky



OCT. 1914
BOWLING GREEN
KY.

SCALE 100 FT. TO AN INCH

Scale 100 Ft. to One Inch.





6

E. MAIN
U.S. POST OFFICE &
COURT HOUSE

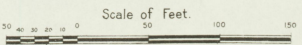
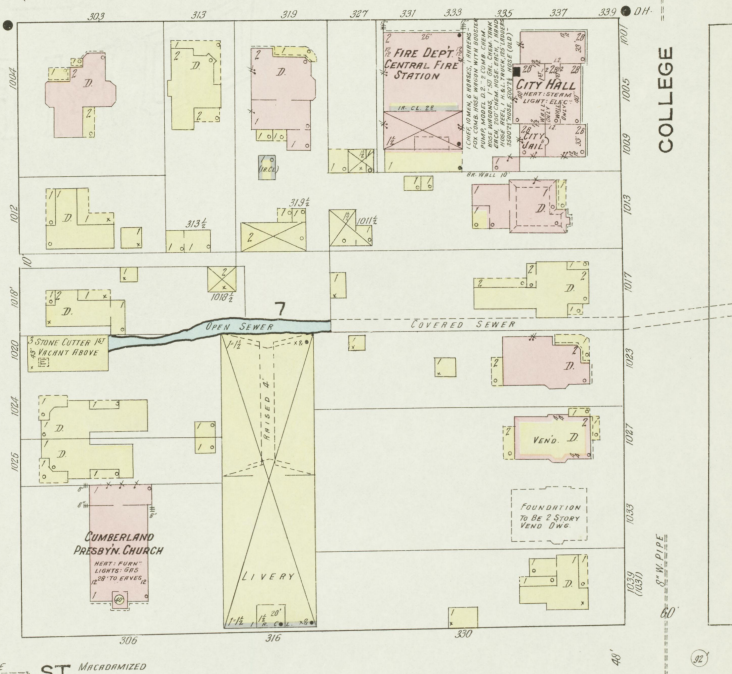


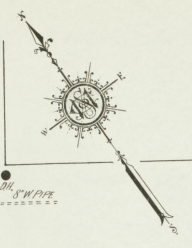
E. 10TH ST.



E. 11TH ST.

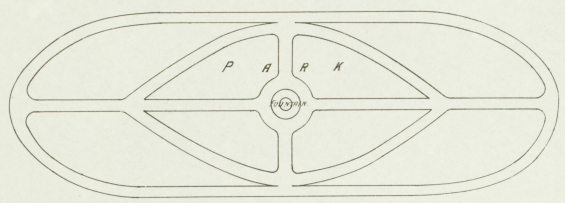
14



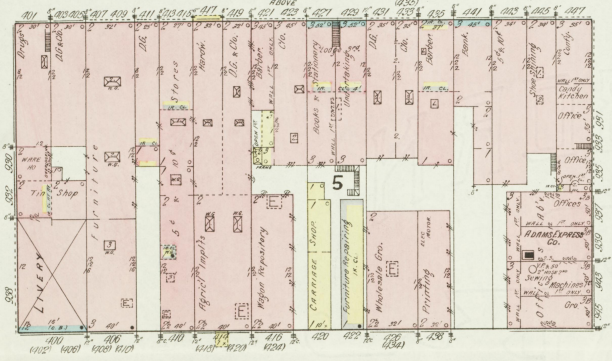


OCT 1914
BOWLING GREEN
KY.

E. MAIN

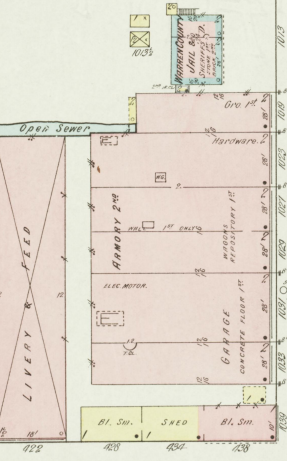


PARK ROW
HOTELLEWIS



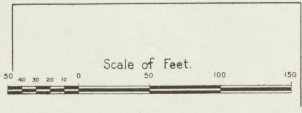
E. 10TH

WARREN COUNTY COURT HO.
HEAT STOVE LIGHTS ELEC.



E. 11TH ST.

ST. MACROBIMIZED



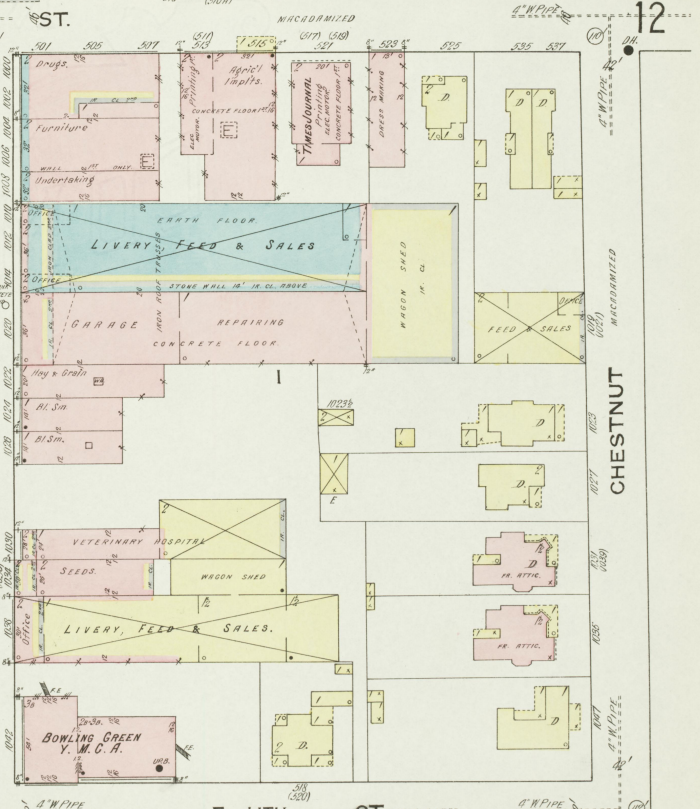
7

ASPHALT PAVED

ASPHALT PAVED

STATE

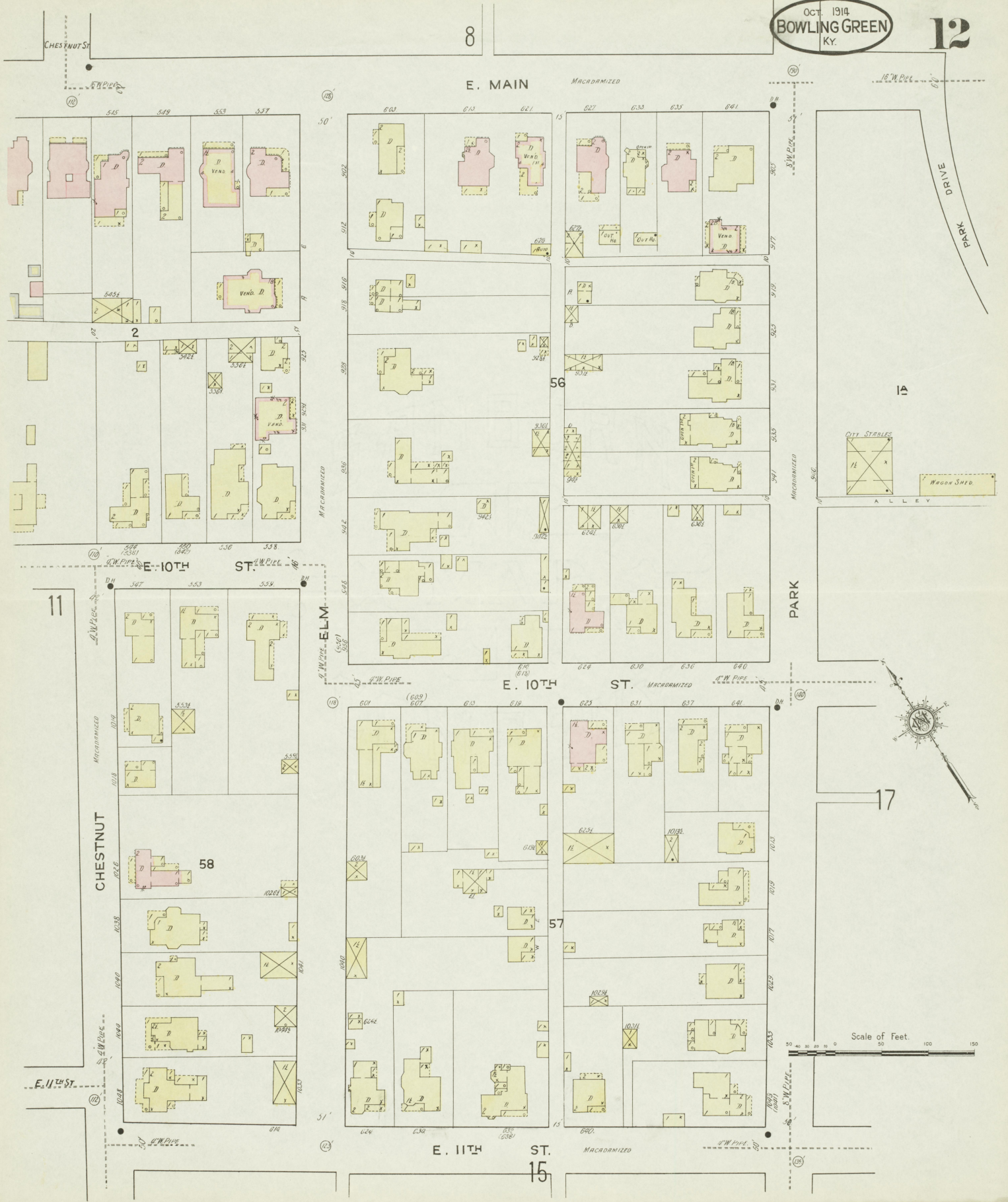
14

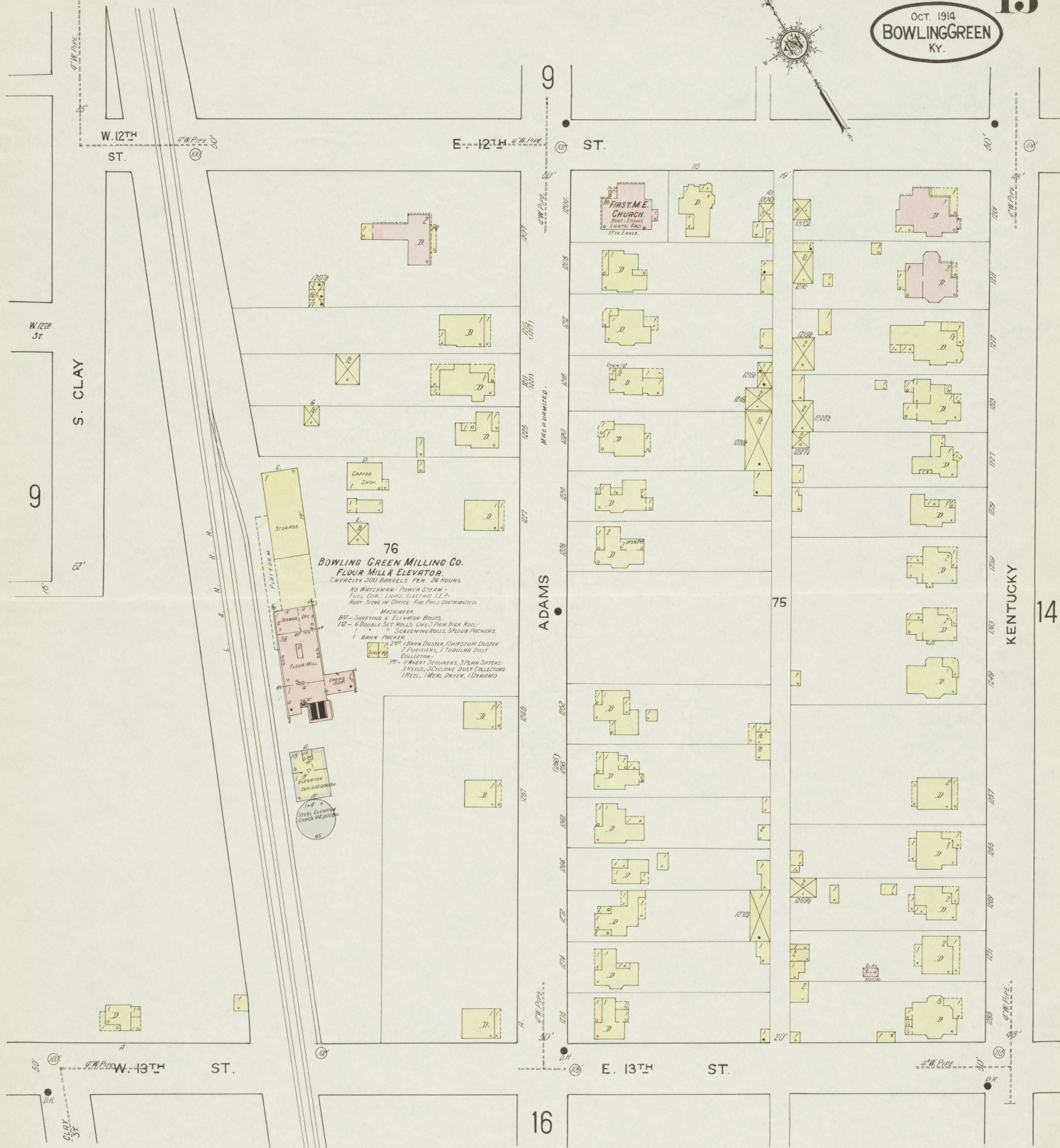
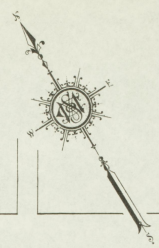


E. 11TH ST. MACROBIMIZED

CHESTNUT

E. 11TH ST.

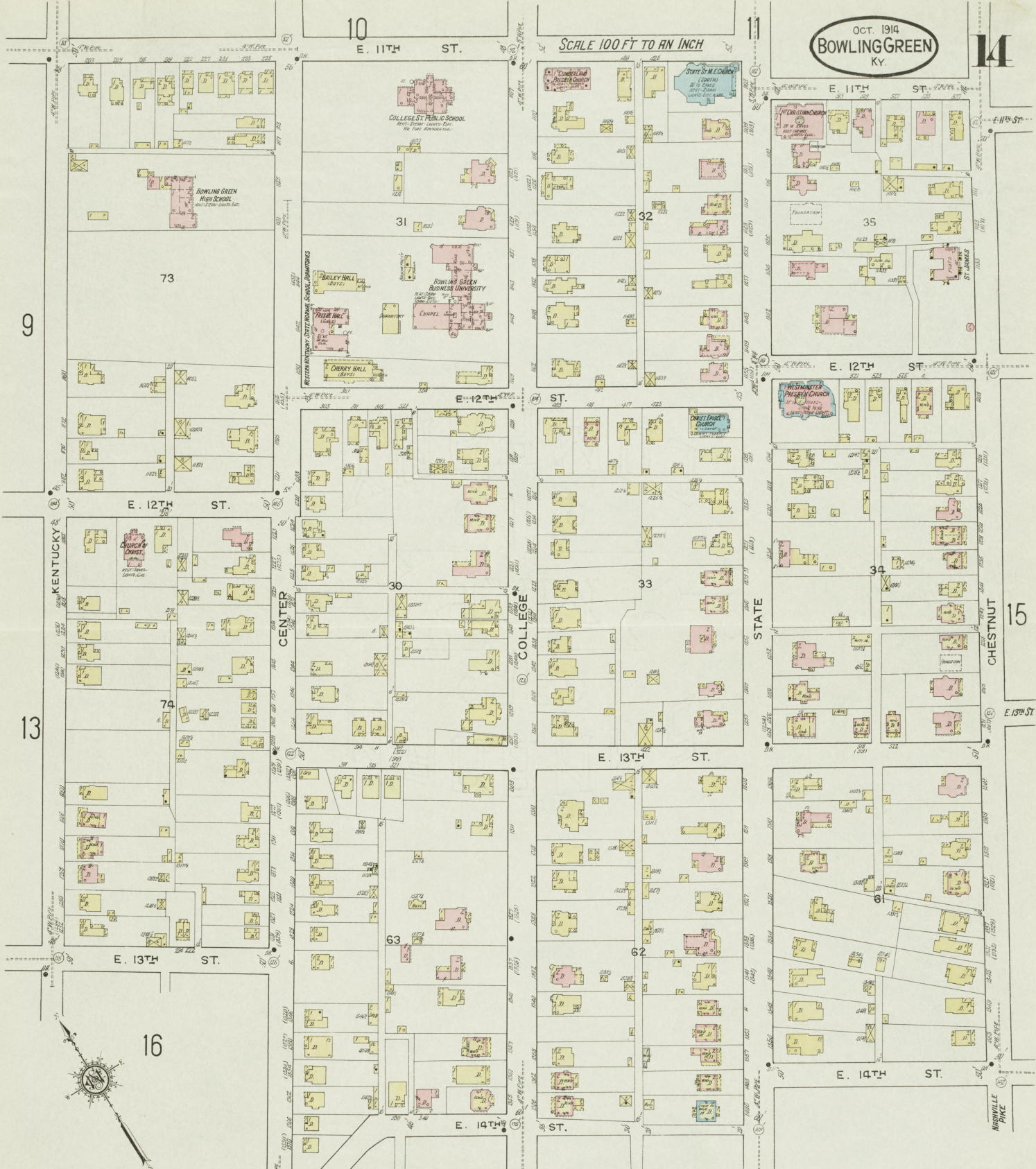




OCT. 1914
BOWLING GREEN
Ky.

SCALE 100 FT TO AN INCH

14



Scale 100 Ft to One Inch.
0 100 200 300

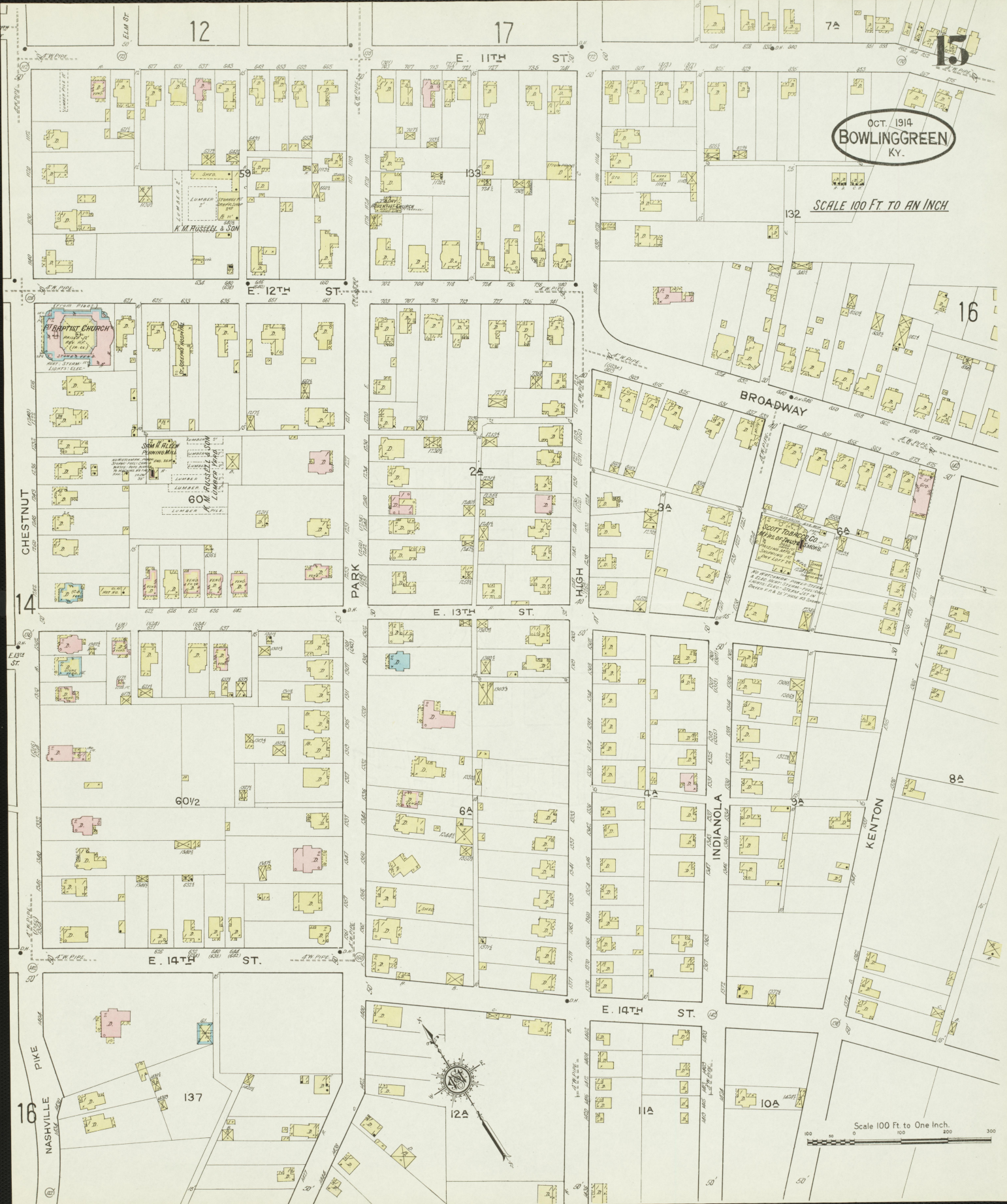
9

13

16

16

15



OCT. 1914
BOWLING GREEN
KY.

SCALE 100 FT. TO AN INCH

BROADWAY

INDIANOLA

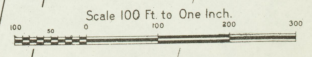
KENTON

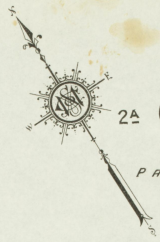
CHESTNUT

PARK

HIGH

PIKE
NASHVILLE





15TH ST.

C. HUNT
TOBACCO REHANDLING
TOBACCO WARE HO.
NO WATCHMAN, NO HEAT,
NO LIGHT, NO FIRE APPS.

12

1A

702 706 710 712 714 716 718 720 722 724 726 728 730 732 734 736 738 740

Barren River

PERKINS BROS.
GLASS FACTORY
NO WATCHMAN, NO POWER
LIGHT, ELECTRIC, HEAT, STEAM,
NO FIRE APPARATUS.

E. 10TH MICHIGAN ST.

12

130

15

E. 11TH 15 ST.

702 706 710 712 714 716 718 720 722 724 726 728 730 732 734 736 738 740

802 806 810 814 818 822 826 830 834 838 842 846 850 854 858 862 866 870 874 878 882 886 890 894 898 902 906 910 914 918 922 926 930 934 938 942 946 950 954 958 962 966 970 974 978 982 986 990 994 998

131

15

802 806 810 814 818 822 826 830 834 838 842 846 850 854 858 862 866 870 874 878 882 886 890 894 898 902 906 910 914 918 922 926 930 934 938 942 946 950 954 958 962 966 970 974 978 982 986 990 994 998

Wadsworth Stone & Paving Co.

NO WATCHMAN,
HEAT, STEAM,
NO LIGHT,
NO FIRE APPS.

TRAVELING CANAL

Barren River

BOWLING GREEN & GREEN RIVER
QUARRIES CO.
NIGHT & SUNDAY WATCHMAN
NO CLOCK, LIGHT, ELECTRIC,
NO FIRE APPARATUS.

STONE SAWING

Located about 2 Miles N.W. of Court Ho.

THE VICTORIA LIMESTONE CO.
NOT IN OPERATION.

STONE
POLISHING
SHED.
ELEC. MACH.

TRAVELING CANAL

PORTAGE (EXTN)

18

4

W. MAIN

327 333 341 347 351 357 361

2A

9

BROWNS LOCK RD.

PAYNE

PORTAGE (EXTN)

19

18

Scale of Feet.

0 20 40 60 80 100 120 140 160

J. Scott
St. 117

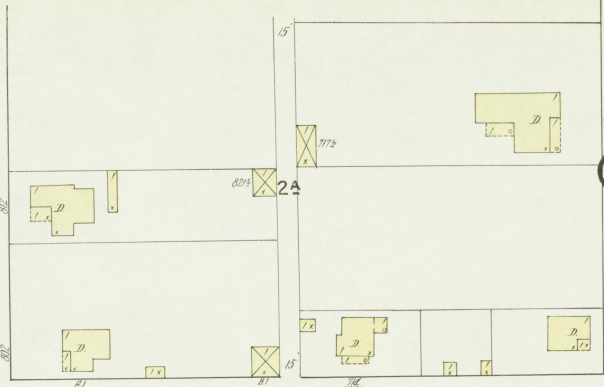
DAN HOBAN
SAW MILL
NIGHT WATCHMAN
NO CLOCK, POWER,
STEAM, FUEL, COAL,
NO FIRE APPS.

PORTAGE

OCT. 1914
BOWLINGGREEN
KY.

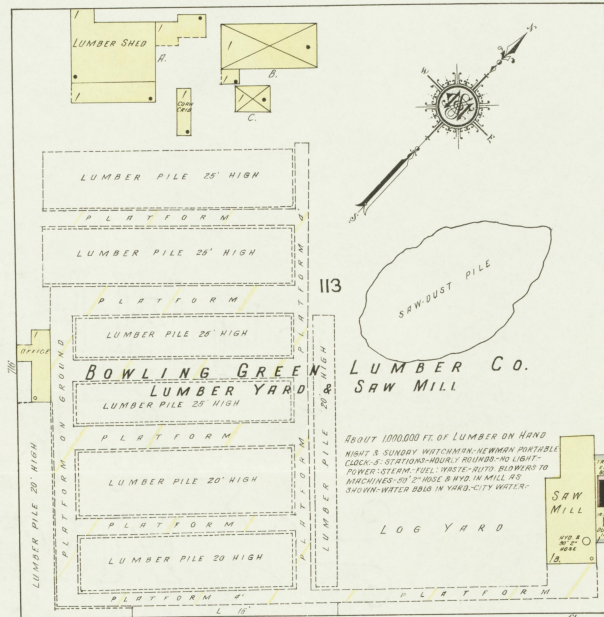


Scale of Feet
0 50 100 150



S. GILBERT

NOT PAVED



S. HOPE

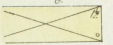
NOT PAVED

S.W. Pipe



S. SCOTT

NOT PAVED



MACHINERY:
14" FORCE PUMP, 1000
1 FLOUR MILL
1 CORN MILL
1 STEAM ENGINE
1 WHEAT MILL
1 SAW MILL
1 SHED
1 BARN
1 STABLE
1 CLOSET
1 W.C.
1 HALL
1 PORCH
1 DRIVE

LOUISVILLE & NASHVILLE PIKE

THREE SPRINGS ROAD

CORNER CRIB

Cave Milling Co.
CAPACITY: 800 BBL. PER DAY
NO WASTE WATER
STEAM-HEAT-STORES-FUEL-COAL &
WOOD-BUILD 2-3 BUCKETS PER FLAT
1 1/2 SUPPLIED FROM WELLS-CHERRY-CHERRY
GRAVE LOCATED 1 MILE S. OF MILL & ELEV
650 FEET-TRUCK FUELLED ON GRAVE PLUMBER
PUMP DRAWING FROM WELLS ON TOP OF MILL-
WELLS ON TOP OF MILL 1/2 MILE S. OF
RIVER-PUMP & PUMPS FROM LOST
RIVER-PUMP & PUMPS FROM LOST
RIVER-PUMP & PUMPS FROM LOST
RIVER-PUMP & PUMPS FROM LOST

Lost River
R.VINE

Located 3 Miles S.W. of Court Ho.
NO EXPOSURE ANY SIDE

SHED

CHURCH

PORTAGE

FARM LANDS

GORDON AV.

BROOMFIELD (BROWN)

