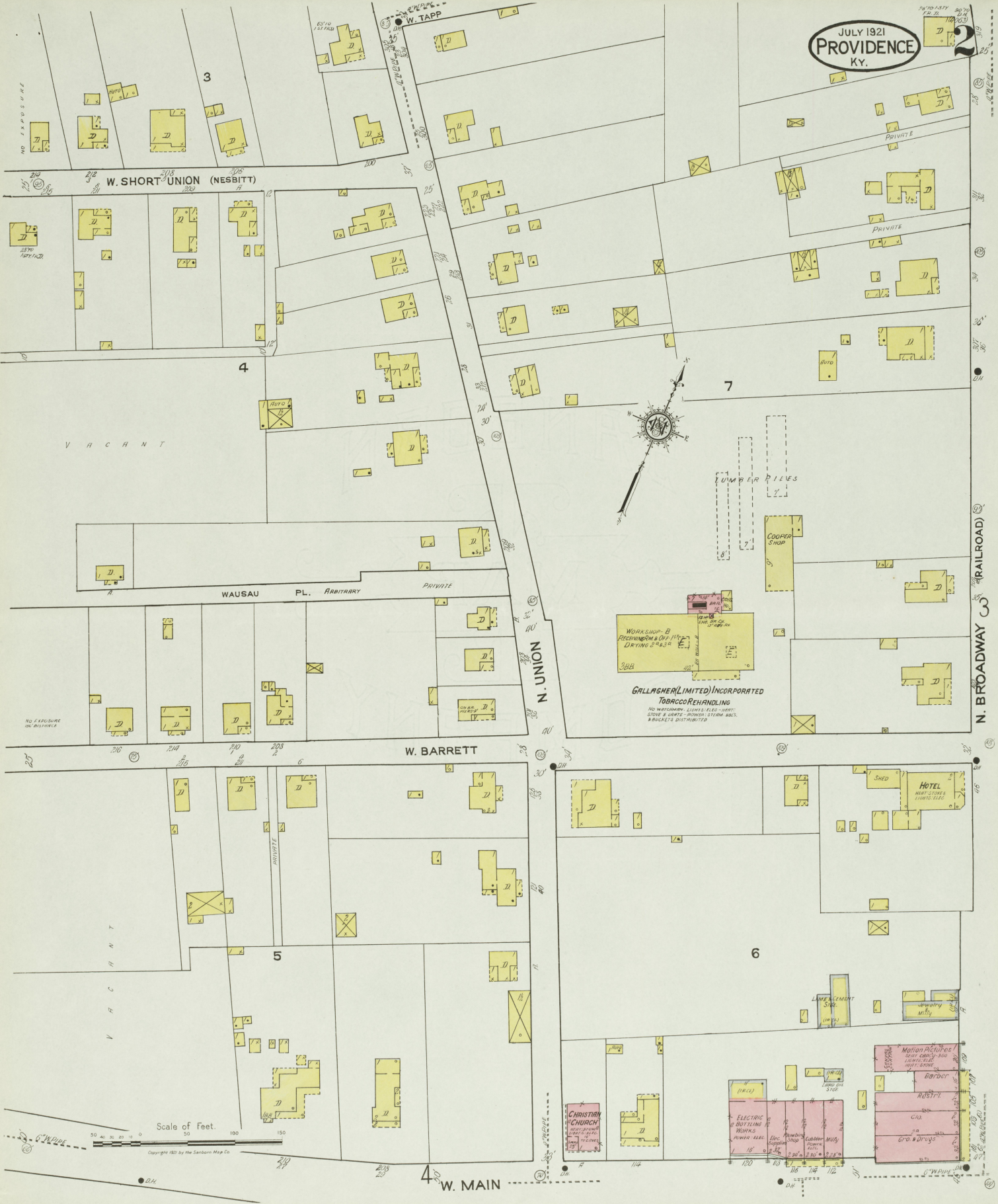


JULY 1921
PROVIDENCE
Ky.



(RAILROAD)

Scale of Feet.

Copyright 1921 by the Southern Map Co.

W. MAIN

Motion Pictures
Barber
CLO
Gro & Drugs

CHRISTIAN
CHURCH

ELECTRIC
BOTTLING
WORKS

WORKSHOP - B
RECEIVING ROOM & OFFICE
DRYING 2 1/2 TONS
388

GALLAGHER (LIMITED) INCORPORATED
TOBACCO REHANDLING
NO WAREHOUSE, LUMBER, ELEC. PARTS
STONE & GRAVE - MONUMENT STORM HALLS
BUCKETS DISTRIBUTED

COOPER
SHOP

LUMBER
PILES

WAUSAU PL. ARBITRARY PRIVATE

W. SHORT UNION (NESBITT)

W. BARRETT

NO EXPOSURE

VACANT

VACANT

NO EXPOSURE
OR RESERVE

PRIVATE

PRIVATE

PRIVATE

PRIVATE

PRIVATE

PRIVATE

PRIVATE

PRIVATE

PRIVATE

PRIVATE

PRIVATE

PRIVATE

PRIVATE

PRIVATE

PRIVATE

PRIVATE

PRIVATE

PRIVATE

PRIVATE

PRIVATE

PRIVATE

PRIVATE

PRIVATE

PRIVATE

PRIVATE

PRIVATE

PRIVATE

PRIVATE

PRIVATE

PRIVATE

PRIVATE

PRIVATE

PRIVATE

PRIVATE

PRIVATE

PRIVATE

PRIVATE

PRIVATE

PRIVATE

PRIVATE

PRIVATE

PRIVATE

PRIVATE

PRIVATE

PRIVATE

PRIVATE

PRIVATE

PRIVATE

PRIVATE

PRIVATE

PRIVATE

PRIVATE

PRIVATE

PRIVATE

PRIVATE

PRIVATE

PRIVATE

PRIVATE

PRIVATE

PRIVATE

PRIVATE

PRIVATE

PRIVATE

PRIVATE

PRIVATE

PRIVATE

PRIVATE

PRIVATE

PRIVATE

PRIVATE

PRIVATE

PRIVATE

PRIVATE

PRIVATE

PRIVATE

PRIVATE

PRIVATE

PRIVATE

PRIVATE

PRIVATE

PRIVATE

PRIVATE

PRIVATE

PRIVATE

PRIVATE

PRIVATE

PRIVATE

PRIVATE

PRIVATE

PRIVATE

PRIVATE

PRIVATE

PRIVATE

PRIVATE

PRIVATE

PRIVATE

PRIVATE

PRIVATE

PRIVATE

PRIVATE

PRIVATE

PRIVATE

PRIVATE

PRIVATE

PRIVATE

PRIVATE

PRIVATE

PRIVATE

PRIVATE

PRIVATE

PRIVATE

PRIVATE

PRIVATE

PRIVATE

PRIVATE

PRIVATE

PRIVATE

PRIVATE

PRIVATE

PRIVATE

PRIVATE

PRIVATE

PRIVATE

PRIVATE

PRIVATE

PRIVATE

PRIVATE

PRIVATE

PRIVATE

PRIVATE

PRIVATE

PRIVATE

PRIVATE

PRIVATE

PRIVATE

PRIVATE

PRIVATE

PRIVATE

PRIVATE

PRIVATE

PRIVATE

PRIVATE

PRIVATE

PRIVATE

PRIVATE

PRIVATE

PRIVATE

PRIVATE

PRIVATE

PRIVATE

PRIVATE

PRIVATE

PRIVATE

PRIVATE

PRIVATE

PRIVATE

PRIVATE

PRIVATE

PRIVATE

PRIVATE

PRIVATE

PRIVATE

PRIVATE

PRIVATE

PRIVATE

PRIVATE

PRIVATE

PRIVATE

PRIVATE

PRIVATE

PRIVATE

PRIVATE

PRIVATE

PRIVATE

PRIVATE

PRIVATE

PRIVATE

PRIVATE

PRIVATE

PRIVATE

PRIVATE

PRIVATE

PRIVATE

PRIVATE

PRIVATE

PRIVATE

PRIVATE

PRIVATE

PRIVATE

PRIVATE

PRIVATE

PRIVATE

PRIVATE

PRIVATE

PRIVATE

PRIVATE

PRIVATE

PRIVATE

PRIVATE

PRIVATE

PRIVATE

PRIVATE

PRIVATE

PRIVATE

PRIVATE

PRIVATE

PRIVATE

PRIVATE

PRIVATE

PRIVATE

PRIVATE

PRIVATE

PRIVATE

PRIVATE

PRIVATE

PRIVATE

PRIVATE

PRIVATE

PRIVATE

PRIVATE

PRIVATE

PRIVATE

PRIVATE

PRIVATE

PRIVATE

PRIVATE

PRIVATE

PRIVATE

PRIVATE

PRIVATE

PRIVATE

PRIVATE

PRIVATE

PRIVATE

PRIVATE

PRIVATE

PRIVATE

PRIVATE

PRIVATE

PRIVATE

PRIVATE

PRIVATE

PRIVATE

PRIVATE

PRIVATE

PRIVATE

PRIVATE

PRIVATE

PRIVATE

PRIVATE

PRIVATE

PRIVATE

PRIVATE

PRIVATE

PRIVATE

PRIVATE

PRIVATE

PRIVATE

PRIVATE

PRIVATE

PRIVATE

PRIVATE

PRIVATE

PRIVATE

PRIVATE

PRIVATE

PRIVATE

PRIVATE

PRIVATE

PRIVATE

PRIVATE

PRIVATE

PRIVATE

PRIVATE

PRIVATE

PRIVATE

PRIVATE

PRIVATE

PRIVATE

PRIVATE

PRIVATE

PRIVATE

PRIVATE

PRIVATE

PRIVATE

PRIVATE

PRIVATE

PRIVATE

PRIVATE

PRIVATE

PRIVATE

PRIVATE

PRIVATE

PRIVATE

PRIVATE

PRIVATE

PRIVATE

PRIVATE

PRIVATE

PRIVATE

PRIVATE

PRIVATE

PRIVATE

PRIVATE

PRIVATE

PRIVATE

PRIVATE

PRIVATE

PRIVATE

PRIVATE

PRIVATE

PRIVATE

PRIVATE

PRIVATE

PRIVATE

PRIVATE

PRIVATE

PRIVATE

PRIVATE

PRIVATE

PRIVATE

PRIVATE

PRIVATE

PRIVATE

PRIVATE

PRIVATE

PRIVATE

PRIVATE

PRIVATE

PRIVATE

PRIVATE

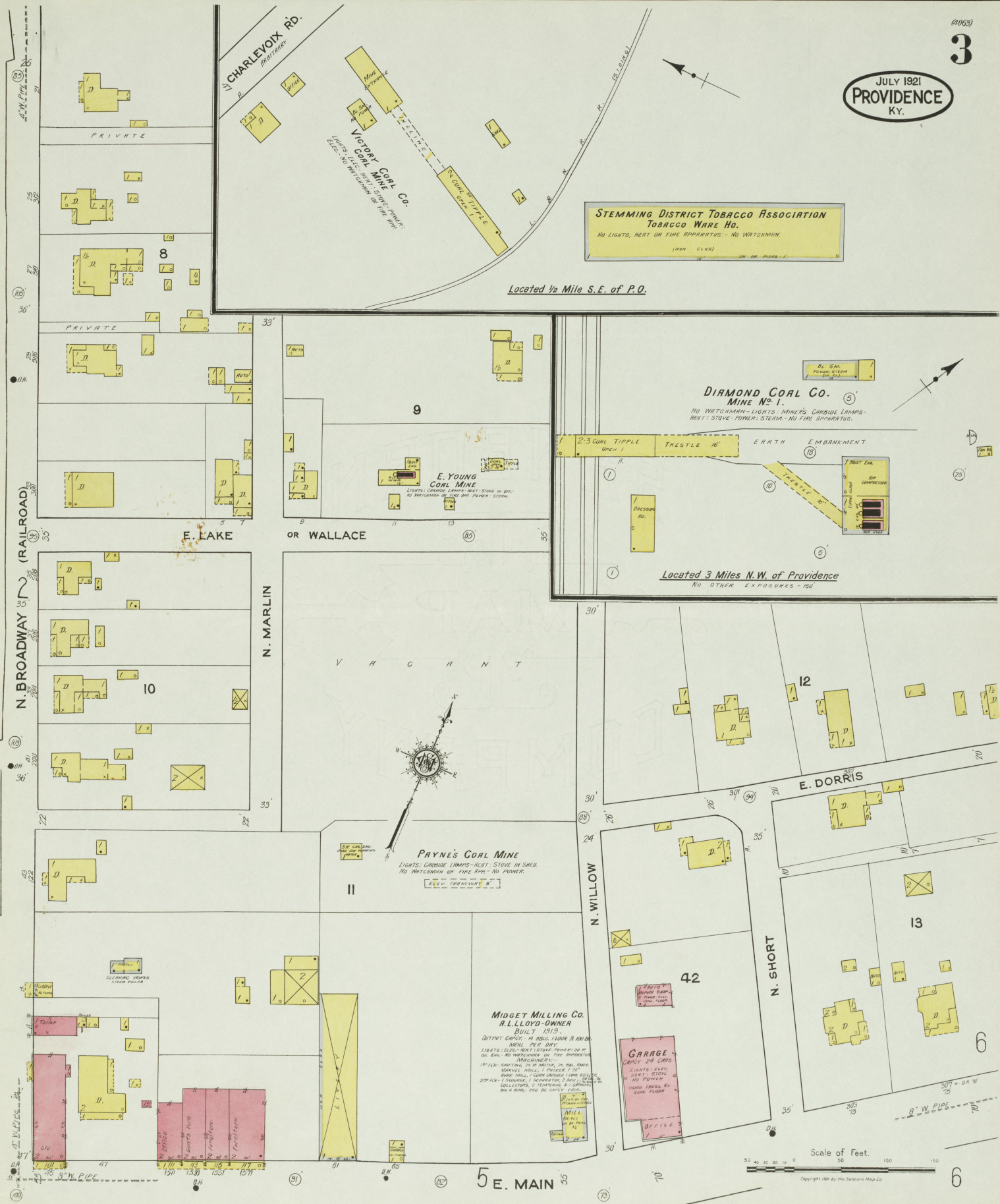
PRIVATE

PRIVATE

PRIVATE

PRIVATE

JULY 1921
PROVIDENCE
KY.



**STEMMING DISTRICT TOBACCO ASSOCIATION
TOBACCO WARE HO.**
NO LIGHTS, HEAT OR FINE APPARATUS - NO WATCHMAN.
(IRON CLAD) ON OR UNDER

Located 1/2 Mile S.E. of P.O.

**DIAMOND COAL CO.
MINE NO. 1.**

NO WATCHMAN - LIGHTS - MINERS CARBIDE LAMPS - HEAT - STOVE - PUMPS - STEAM - NO FIRE APPARATUS.

Located 3 Miles N.W. of Providence
NO OTHER EXPOSURES - 150'

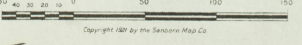
PAYNE'S COAL MINE
LIGHTS: CARBIDE LAMPS - HEAT: STOVE IN SHAED.
NO WATCHMAN OR FIRE APPS - NO POWER.
ELEV. TRAMWAY 8'

**MIDGET MILLING CO.
R.L. LLOYD - OWNER**
BUILT 1919.
OUTPUT CAPACITY: 40 TONS PER HOUR IS AVERAGE.
WHEEL PER DAY.

LIGHTS: ELECT. AND 150 WATT POWER IN SHAED.
NO FIRE APPS. NO WATCHMAN OR FIRE APPARATUS.
TRUCKS AND TRAILERS.
150 FLK. SORTING 75 IN MOUTH, 25 IN. WIDE.
SOURCE: MILL & POWER 1 1/2 MI.
BURN MALL, 1 CUM DRUMMER, 1 SHED.
200 PK. 1 FLOOR, 1 SCRAPPER, 1 SHED.
COLLECTORS, 2 TRAMPING, 1 SHED.
MILL & BURN, 250 2ND CORNER, 1 SHED.

GARAGE
CAPACITY 24 CARS
2 LIGHTS & LAMP
HEAT & STOVE
NO POWER
WOOD FLOOR BY
CONC. FLOOR

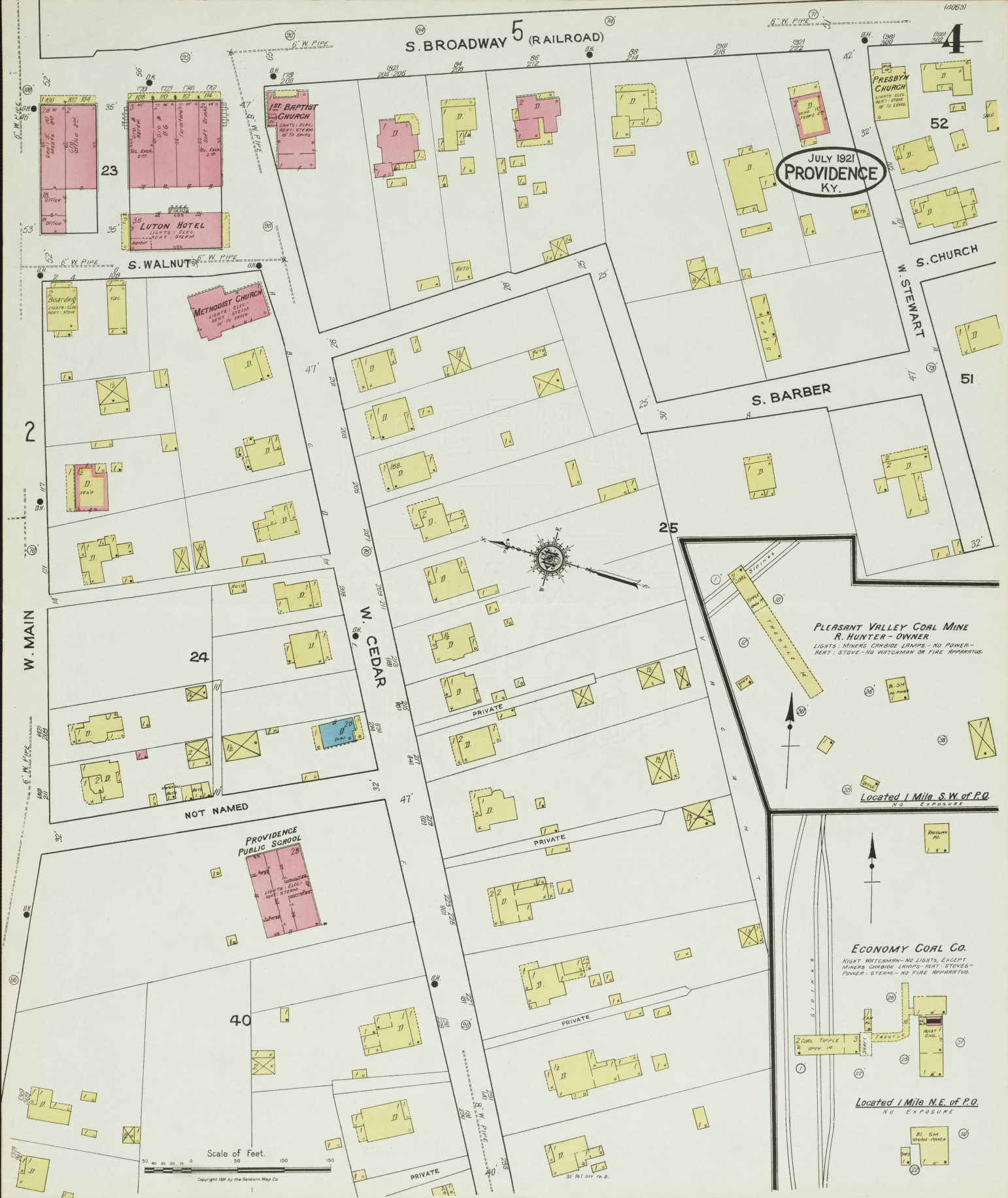
Scale of Feet.



Copyright 1921 by the Sanderson Map Co.

S. BROADWAY 5 (RAILROAD)

JULY 1921
PROVIDENCE
KY.



23

LUTON HOTEL
LIGHTS ELEC.
HEAT STEAM
BARBER

METHODIST CHURCH
LIGHTS ELEC.
HEAT STEAM
30' 10' EAVES

PROVIDENCE PUBLIC SCHOOL
28

PRESBYTN CHURCH
LIGHTS ELEC.
HEAT STEAM
10' 10' EAVES

52

51

PLEASANT VALLEY COAL MINE
R. HUNTER - OWNER
LIGHTS: MINERS CARBIDE LAMPS - NO POWER -
HEAT: STOVE - NO WATCHMAN OR FIRE APPARATUS.

Located 1 Mile S.W. of P.O.
NO EXPOSURE

ECONOMY COAL CO.
NIGHT WATCHMAN - NO LIGHTS, EXCEPT
MINERS CARBIDE LAMPS - HEAT: STOVES -
POWER: STEAM - NO FIRE APPARATUS.

Located 1 Mile N.E. of P.O.
NO EXPOSURE

Scale of Feet.

Copyright 1921 by the Seaborn Map Co.

JULY 1921
PROVIDENCE
KY.



FARMER'S LOUSE-LEAF FLIPPING TOBACCO W HO-
CH. STGE.
FR. 100
NO IMPROVEMENTS PERMITTED
ON STRIKE PLANS 2'

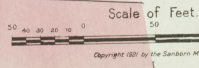
S. BROADWAY (RAILROAD)

S. WILLOW

E. LOCUST

S. ADAMS

E. GREEN



JULY 1921
PROVIDENCE
KY.

6

7
PROVIDENCE LOOSE LEAF
FLOOR INC.
TOBACCO WARE HO.
(1920 CLAD)
LIGHTS: ELEC. HEAT BRUTE- NO
POWER- NO WATERSINKS OR FIRE
APPURTUS

16

S. MONTGOMERY

E. MAIN

E. LOCUST

N. ROSAMOND
AV.

14

19

18

N. CEMETERY

13

S. MAPLE

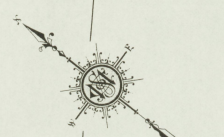
20

N. SHORT

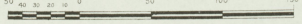
5

ADAMS

CUMBERLAND
PRESBYN CHURCH



Scale of Feet.



Copyright 1921 by the Standard Map Co.



JULY 1921
PROVIDENCE
KY.



NO NAME

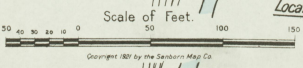
PLERANT HILL
BAPTIST CHURCH
COLORED

Located about $\frac{3}{4}$
Mile E of P.O.

N. EXPOSURE 150'

PROVIDENCE MINING CO.
SHAFT MINE NO. 2

LIGHTS (ELEC.) (L.E.P.)
WATER SYSTEM
PUMP HOUSE
FUEL EXHAUST



Located $\frac{1}{4}$ Mile S of P.O.



JULY 1921
PROVIDENCE
KY.

S. MAPLE

E. OAK (PICKLE)

S. PRINCETON

E. OAK (PICKLE)

S. RAILROAD

S. WILLOW

S. BROADWAY
(RAILROAD)

E. GREEN

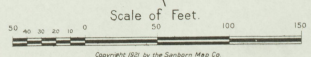
STOCK
YARD

LUMBER DEPOT

DUNBAR HOTEL
LUMBER SHED
REST ROOM

PUBLIC SCHOOL
LUMBER ROOMS
LUMBER SHED

DEVERS COAL CO.
COAL MINE
NO. 1000
NO. 1001
NO. 1002
NO. 1003
NO. 1004
NO. 1005
NO. 1006
NO. 1007
NO. 1008
NO. 1009
NO. 1010
NO. 1011
NO. 1012
NO. 1013
NO. 1014
NO. 1015
NO. 1016
NO. 1017
NO. 1018
NO. 1019
NO. 1020
NO. 1021
NO. 1022
NO. 1023
NO. 1024
NO. 1025
NO. 1026
NO. 1027
NO. 1028
NO. 1029
NO. 1030
NO. 1031
NO. 1032
NO. 1033
NO. 1034
NO. 1035
NO. 1036
NO. 1037
NO. 1038
NO. 1039
NO. 1040
NO. 1041
NO. 1042
NO. 1043
NO. 1044
NO. 1045
NO. 1046
NO. 1047
NO. 1048
NO. 1049
NO. 1050
NO. 1051
NO. 1052
NO. 1053
NO. 1054
NO. 1055
NO. 1056
NO. 1057
NO. 1058
NO. 1059
NO. 1060
NO. 1061
NO. 1062
NO. 1063
NO. 1064
NO. 1065
NO. 1066
NO. 1067
NO. 1068
NO. 1069
NO. 1070
NO. 1071
NO. 1072
NO. 1073
NO. 1074
NO. 1075
NO. 1076
NO. 1077
NO. 1078
NO. 1079
NO. 1080
NO. 1081
NO. 1082
NO. 1083
NO. 1084
NO. 1085
NO. 1086
NO. 1087
NO. 1088
NO. 1089
NO. 1090
NO. 1091
NO. 1092
NO. 1093
NO. 1094
NO. 1095
NO. 1096
NO. 1097
NO. 1098
NO. 1099
NO. 1100
NO. 1101
NO. 1102
NO. 1103
NO. 1104
NO. 1105
NO. 1106
NO. 1107
NO. 1108
NO. 1109
NO. 1110
NO. 1111
NO. 1112
NO. 1113
NO. 1114
NO. 1115
NO. 1116
NO. 1117
NO. 1118
NO. 1119
NO. 1120
NO. 1121
NO. 1122
NO. 1123
NO. 1124
NO. 1125
NO. 1126
NO. 1127
NO. 1128
NO. 1129
NO. 1130
NO. 1131
NO. 1132
NO. 1133
NO. 1134
NO. 1135
NO. 1136
NO. 1137
NO. 1138
NO. 1139
NO. 1140
NO. 1141
NO. 1142
NO. 1143
NO. 1144
NO. 1145
NO. 1146
NO. 1147
NO. 1148
NO. 1149
NO. 1150
NO. 1151
NO. 1152
NO. 1153
NO. 1154
NO. 1155
NO. 1156
NO. 1157
NO. 1158
NO. 1159
NO. 1160
NO. 1161
NO. 1162
NO. 1163
NO. 1164
NO. 1165
NO. 1166
NO. 1167
NO. 1168
NO. 1169
NO. 1170
NO. 1171
NO. 1172
NO. 1173
NO. 1174
NO. 1175
NO. 1176
NO. 1177
NO. 1178
NO. 1179
NO. 1180
NO. 1181
NO. 1182
NO. 1183
NO. 1184
NO. 1185
NO. 1186
NO. 1187
NO. 1188
NO. 1189
NO. 1190
NO. 1191
NO. 1192
NO. 1193
NO. 1194
NO. 1195
NO. 1196
NO. 1197
NO. 1198
NO. 1199
NO. 1200



Copyright 1921 by the Sanborn Map Co.

JULY 1921
PROVIDENCE
KY.

29



W. BARBOR

S. RAILROAD

E. CHURCH

E. COLEMAN

S. PRINCETON

S. MAPLE

E. THOMPSON

HARMON

Scale of Feet.

Copyright 1921 by the Sanborn Map Co.

Located About 3/4 Mile SW. of P.O.

