

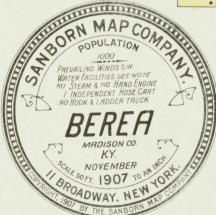
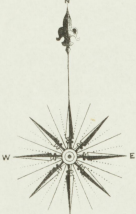
WATER FACILITIES:
 Gravity system, source 2 reservoirs combined
 capacity 800,000 gals. situated 2 1/2 miles S.E. of
 Lincoln Hall. 5 miles of mains 4" & 6" (1919
 1924) 24 hydrants, pressure 90 lbs.

FIRE DEPT.:
 Volunteer students, 1 hand, 2 wheel hose reel
 300' 2 1/2" canvas hose. Alarm given by siren
 bells, notifications sounded by watchman from
 bell in tower on Chapel flag and whistle at
 engine room.
 Ground elevations nearly level.

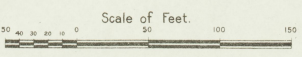
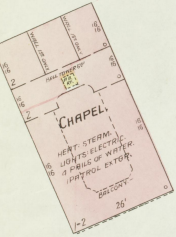
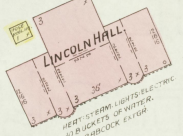
KEY

HEAVY DASH	PIPE WALL ON 2ND FLOOR
DASH	METAL CORNICE
THICK DASH	PIPE WALL ON 1ST FLOOR
DASH WITH X	FIRE WALL ON ANY ROOF
DASH WITH O	FRAME PARTITION
DASH WITH I	OPENING WITH IRON DOOR
DASH WITH W	WINDOW WITH IRON SHUTTERS
DASH WITH S	WINDOW IN STORY
DASH WITH T	WINDOW ON 2ND STORIES
DASH WITH 4	2ND & 4TH
SOLID	STAIRS
BUILDINGS COLORED YELLOW	ARE FRAMES
RED	BRICK
BLUE	WOOD
BROWN	IRON
GREEN	ASBESTOS
SPICALS	SPECIALS

① INDICATE RELATIVE HEIGHTS
 * FIRE STATION AS SHOWN ON KEY MAP
 ALTERNATE STREET NUMBERS ARE ACTUAL
 CONSECUTIVE STREET NUMBERS ARE ARBITRARY

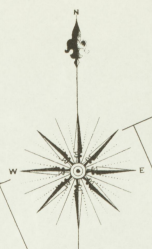


Map Division
 JAN 17 1908
 Library of Congress



Map Division
 31 JUL 1908
 Library of Congress

Nov. 1907
BEREA
KY.



2

RICHMOND

GOLDEN PL.

CENTER

RAWLINGS PL.

MAIN

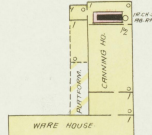
JACKSON

SHORT

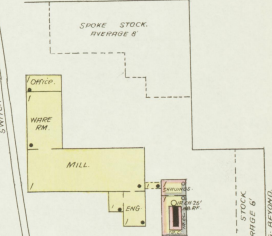
CHESTNUT

AV.

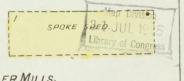
Located 1/4 Mile W. of Lincoln Hill



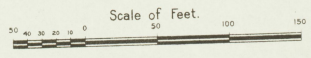
BEREA CANNING & PACKING Co.
FUEL, COAL, POWER, STEAM.
HEAT, STEAM, NO LIGHTS.



STANDARD WHEEL CO.
NIGHT WATCHMAN, TO HAVE CLOCK AND
STATIONS, FUEL, SWAPING, POWER,
STEAM, NO HEAT, LIGHTS, OIL, LANTERNS,
BARRELS OF WATER AND BUCKETS
THROUGHT.



BEREA ROLLER MILLS:
ANDREW ISARCS PROP.
FUEL, COAL, POWER, STEAM, NO HEAT,
NO LIGHTS, NO FIRE PROTECTION.
MACHINERY: 1ST COGN CRUSHER,
1ST & 2ND TRIND OF ROLLS, 1 COGN MILL,
1 CORN SHELDER, 1 PACKER,
28 1/2 BURN DUST W. 14 HURDLES,
28 1/2 CENTRIFUGAL REEL, 1 CULVE,
2 DUST COLLECTORS, 1 STOWEP,
1 PACK BOLLER, 1 RECEIVING
SEPARATOR.



LOUISVILLE & NORTONVILLE R.P.R.

FOR DWG. BEYOND

3/11/17

