

copy 2

# vanderbilt vs kentucky

# K DAY

# K DAY



STOLL FIELD



NOVEMBER 5, 1966



OFFICIAL PROGRAM



50c

Est. Price

.48

Tax

..... .02



**EXCLUSIVELY**  
**Dawahare's**

- LEXINGTON
- WHITESBURG
- PIKEVILLE
- HAZARD
- NEON
- CORBIN

**Gardenside Plaza**



*PLENTY FREE PARKING*

STORE HOURS—10 a.m. 'til 9 p.m.

Monday thru Saturday

*First National Charge*

30 Day Charge—

6 Month Revolving Charge

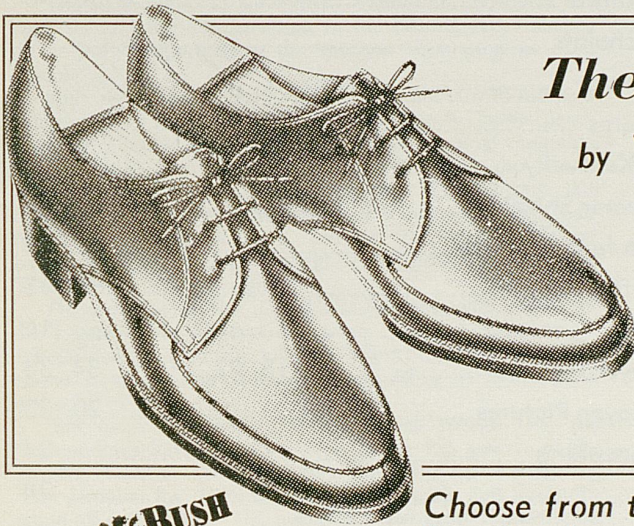


Also available at Dawahare's  
**WILDCAT BOOSTER TIES**  
Pure Silk





... PURCELL'S, Central Kentucky's  
Headquarters For Fine Quality Shoes



The "WILDCAT"

by **WINTHROP**



SHOES FOR MEN

**13<sup>00</sup>**  
pr.

- Black Slip-on
- Black Oxford
- Brown Oxford
- Sizes 6½-12, B to D

**NUNN & BUSH**  
**Hush Puppies**

Town & Country Shoes

**Evans**



**Coach & Four**

*Edgerton*  
SHOES FOR MEN



**Capesio**

**DEBUTANTE**  
Beautiful Shoes

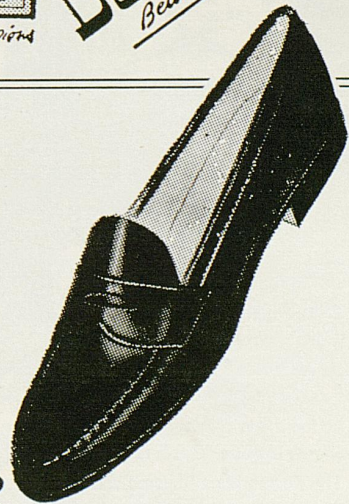
The "KITTEN"

by

**SPALDING**

**14<sup>00</sup>**  
pr.

- Black
- Brown
- 4½ To 10
- AAAA To B



*Purcell's*

CENTRAL KENTUCKY'S SMARTEST STORE SINCE 1887  
SHOE CENTER — MAIN FLOOR



## OFFICIAL WATCH FOR THIS GAME



**LONGINES**  
THE WORLD'S  
MOST HONORED  
WATCH

10 WORLD'S FAIR  
GRAND PRIZES  
28 GOLD MEDALS

Longines watches are  
recognized as **OFFICIAL**  
for timing world  
championships and Olympic  
sports in all fields  
throughout the world.



Longines 5-Star Admiral Automatic with Calendar,  
All-Proof®, sweep-second, 14K gold strap—\$185.00

### *The Longines Credo*

Every Longines watch,  
whatever its type, for whatever  
its use, today, as for almost  
a century, is manufactured to  
be the finest of its kind and  
worthy in every respect to be called  
The World's Most Honored Watch

**LONGINES-WITTMAYER WATCH CO.**  
MONTREAL • NEW YORK • GENEVA  
Maker of Watches of the Highest Character Since 1857

## OFFICIAL UK FOOTBALL PROGRAM CONTENTS

	Page
Game Story .....	5
Governor Breathitt .....	6
Dollars For Scholars .....	8
President Oswald .....	9
Freshman Scores .....	10
Athletics At Kentucky .....	11
Athletics Director Shively .....	12
Varsity Schedule and Scores .....	14
Coaching Staff .....	15
Head Coach Bradshaw .....	16
Kentucky Player Pictures .....	18, 22, 26, 30, 34, 38
Vanderbilt Player Pictures .....	20, 33
Statistically Speaking .....	24
Rosters .....	28
Lineups .....	Center Spread
Depth Chart .....	29
Vanderbilt Administration .....	37
The College Game Is Best .....	40
What Opponents Are Doing .....	42
Meet The Kittens .....	43
Southeastern Conference Schedule .....	44
K-Men's Association .....	46
Homecoming Preview .....	47
Band .....	49
Wildcat Coaches—Athletics Staff .....	50
UK Choristers .....	52-53
Kentucky Basketball .....	54

### OFFICIAL 1966 SOUVENIR FOOTBALL PROGRAM

Published by U.K. Athletics Association  
Bernie A. Shively, Director of Athletics  
Edited by Ken Kuhn  
Director of Sports Information

Represented for National Advertising by  
Spencer Advertising, Inc.  
271 Madison Avenue, New York, N. Y.



# Wildcat Gridiron News

## KENTUCKY vs. VANDERBILT

The stage for today's Kentucky-Vanderbilt encounter has been set and the 39th meeting in the historic series shapes up as itally important to the gridiron reputation of each school.

Only with a win over the pesky Commodores to use as a stepping stone can the troubled force of Coach Charlie Bradshaw keep alive hopes for salvaging a winning campaign out of 1966. The Kentuckians, now 2-4-1 on the season after settling for a 14-all deadlock with West Virginia last Saturday, must sweep their final three contests to up their record above the .500 level. On tap following Vandy are battles with Houston in Lexington and powerful arch-rival Tennessee in Volunteerland.

On the face of the record alone, Vanderbilt enters today's game as a decided underdog. Victims of too much schedule and apparently too little talent, the Nashville crew shows an accounting of only one win offset by five straight setbacks.

But close examination of the record reveals that the Commodores have taken on some of the top powers of the country—Georgia Tech, Alabama, and Florida. Against the only common foe, Virginia Tech, both Vandy and Kentucky came off second best—UK losing in a 7-0 upset following on the heels of its own upset of Auburn a week earlier and Vanderbilt dropping a 21-6 decision to the underrated Gobblers at neutral Richmond.

Nobody seriously expected great things from Vandy this season after Coach Jack Green's outfit lost such key hands as quarterback Dave Waller and halfback Toby Wilt. However, the Commodores are praised by most experts for

"holding their head above water" with sound, well-balanced performances that indicate a potential to give any opponent trouble on a given Saturday.

Scouts rate the Commodores as a team that prefers to play "grind-it-out" football rather than depend on spectacular plays. In last Saturday's close (13-12) loss to Tulane, Vandy aired only five passes in the entire game. A new quarterback, Roger May, punched his club to 159 yards rushing and was threatening the Greenies with the winning TD from the one-yard line when the game ended. Spearheading the Vandy running were fullback Jim Whiteside and tailback Don North.

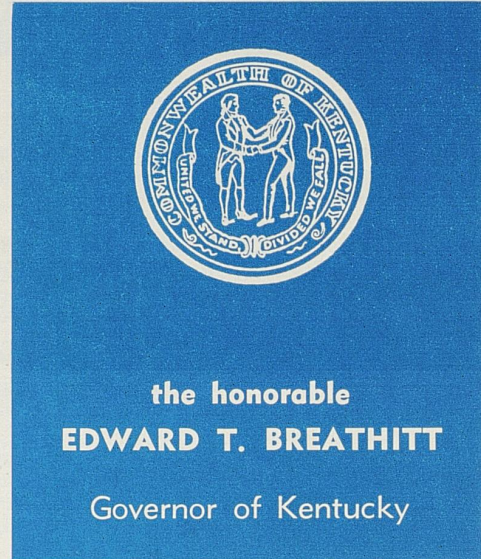
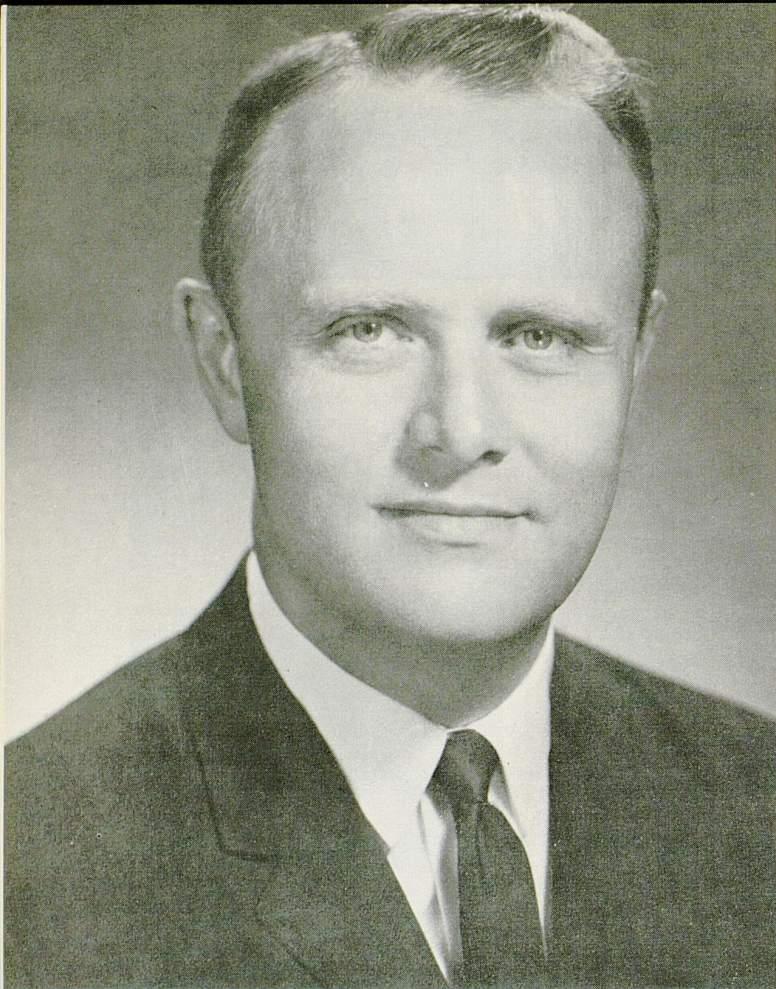
Kentucky's varsity has an added challenge to achieve victory today. First of all, it is K-Day and many Wildcat greats and near greats from years gone by will be watching from the stands. Secondly, the UK Kittens provided their "big brothers" an example of how victory over Vanderbilt should be achieved by soundly trouncing the Baby Commodores last Saturday night, 42-8.

Gridiron relations between Kentucky and Vanderbilt date way back to 1896 and the rivalry stands as one of the oldest in the South, both from the standpoint of first meeting and number of games played. History shows a record solidly in the Commodores' favor—23 wins to Kentucky's 11 and four ties. However, the Wildcats have dominated the series in recent years to the extent that Vandy has not won since taking an 11-6 game in Nashville in 1959. Thanks mainly to early year successes, the Commodores hold a 7-6-2 superiority in games taking place in Lexington. Their last win here came in 1948 on a 26-7 count. Since then UK has topped the scoreboard four times and one scoreless tie resulted in 1958.

**BAYOU BENGAL CAGED**—Louisiana State's Tigers, particularly fullback Gwain DiBetta, found the path to victory over the Wildcats a difficult one to traverse. In this action photo, DiBetta (21) comes face to face with Kentucky's sterling linebacker Mike McGraw (40). Coming up to put on the finishing touches are Dicky Lyons (24) and Jerry Davis (25).







## Alumnus Governor Boosts Wildcat Gridders . . .

Edward T. Breathitt, at 41, is the nation's second youngest Governor. A Hopkinsville attorney, he continues a family record of distinguished public service that dates back to pre-Civil War days when an ancestor, John Breathitt, served as the state's chief executive.

Governor Breathitt, who in his capacity as Governor, also serves as chairman of the University of Kentucky Board of Trustees, began his career as a lawyer and public servant immediately upon graduation from the University of Kentucky College of Law in 1950. At the age of 27, he was elected to the State House of Representatives. Later he was State Personnel Commissioner and a member of the State Public Service Commission before being elected to Kentucky's highest office in 1963.

While a student at the University of Kentucky, where he also obtained a degree in Commerce, he proved his capacity for leadership. While there, he was president of Lamp and Cross, senior men's honorary, and ODK, men's leadership and scholarship honorary fraternity.

His distinguished background also includes three years in the Army Air Force during World War II and the state presidency of the Young Democratic Clubs of Kentucky.

A native of Hopkinsville, he is married to the former Frances Holleman of Mayfield. They have four children—Mary Fran, who is 16; Linda, 15; Susan, 9; and Edward III, who is 7.

Governor Breathitt continues to be one of the most enthusiastic boosters of his Alma Mater and its football team.





## CHEER FOR MILK'S VITALITY

Put Vitality on your team... drink milk! A glass of cool, refreshing milk with meals and snacks helps see you through the busiest fall schedule. No other beverage helps you get the lasting energy found only in nature's Vitality drink... Milk. You'll cheer for milk's Vitality.

a message from dairy farmer members of



american  
dairy  
association





## Dollars for Scholars

Current recipients of scholarships made possible by the University's K-Men's Association are shown above with Mr. James Ingle (center), Director of UK's Office of Student Financial Aid. The students, from the left, are Edmund Sutton, Jr., Patricia Correll, Beatrice Talley Mahan; and Harold Bell.

Through the unique generosity of an organization of former University of Kentucky athletes, known as the K-Men's Association, deserving young Kentuckians are now afforded the opportunity to gain a college education that otherwise might escape them.

The scholarship plan, begun three years ago by the ex-lettermen and financed through proceeds from "Dollars For Scholars" games (one freshman football game and one in basketball), is believed to be nationally unique. The scholarships are academic rather than athletic, based on need and are available to either a boy or a girl who are residents of Kentucky. Grants are renewable annually provided the student recipient makes satisfactory academic progress.

Current holders of K-Men's Association scholarships are Beatrice Talley Mahan, a senior from Magnolia studying math and German; Harold

Bell, Cynthiana junior and Social Science major; Patricia Correll, Ft. Thomas sophomore majoring in math; and Edmund Sutton a freshman from Lancaster who plans to major in electrical engineering.

The K-Men's Association plans to create at least one new scholarship each year with profits derived from the benefit games allotted the group by the UK Athletic Association.

James Ingle, director of the University's Office of Student Financial Aid, calls the generous action of the former athletes in establishing the fund "a significant addition to the University's total scholarship program." He added that "it is highly unusual that such an award is given entirely on the basis of scholastic ability and need for financial assistance by an athletics-oriented organization."





**JOHN W. OSWALD**  
President  
University of Kentucky



### **University's President Knows Value of An Athletic Program . . .**

When Dr. John W. Oswald became the sixth president of the University of Kentucky on Sept. 1, 1963, he brought to the position most unique qualifications that have since aided immeasurably in his administration of one of the nation's foremost and fastest-growing educational institutions.

John Oswald's background reflects the highest standard of excellence in educational preparation and also includes experience in athletics at both the player and coach levels.

The 49-year-old educator, who was born in St. Paul, Minnesota, received his education in the public schools of La Grange, Ill., and at DePauw University where he was a Phi Beta Kappa graduate in 1938. He also did graduate work on the Davis and Berkeley campuses of the University of California, receiving the Ph.D. Degree in plant pathology in 1942.

Following a World War II stint in the Navy as a PT boat captain and division commander, he returned to UC as a professor in his special field

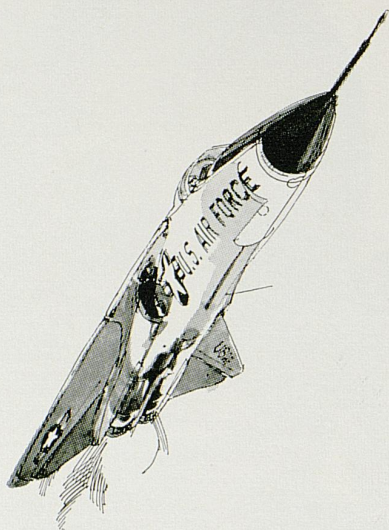
and later rose through the administrative ranks to the position of Vice-President for Administration.

Dr. Oswald's athletic experience, that now stands him in good stead as president of a university boasting an ambitious athletic program, came as a player in his collegiate days at De Pauw as he played guard on the football team for three years and later at California's Davis campus—where he tried his hand at coaching (by avocation) the grid team for a brief period.

In 1962, he was named by Sports Illustrated on its Silver Anniversary All-America team, composed of former football players who achieved special prominence in their chosen professions.

Dr. Oswald is a staunch supporter of Kentucky's athletic teams and advocates a fair-minded approach that lends proper emphasis to the athletic program. UK athletics flourish within the proper perspective as an equal part of the total university.





## Have astronauts made pilots old hat?

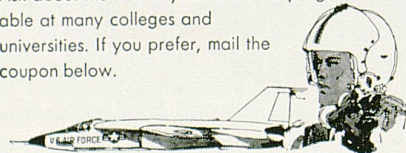
Sure, the boys who go off the "pads" get the big, bold headlines. But if you want to fly, the big opportunities are still with the aircraft that take off and land on several thousand feet of runway.

Who needs pilots? TAC does. And MAC. And SAC. And ADC.

There's a real future in Air Force flying. In years to come aircraft may fly higher, faster, and further than we dare dream of. But they'll be flying, with men who've had Air Force flight training at the controls. Of course the Air Force also has plenty of jobs for those who won't be flying. As one of the world's largest and most advanced research and development organizations, we have a continuing need for scientists and engineers.

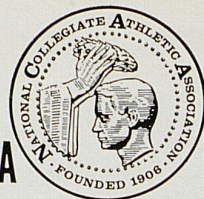
Young college graduates in these fields will find that they'll have the opportunity to do work that is both interesting and important. The fact is, nowhere will you have greater latitude or responsibility *right from the start* than on the Aerospace Team—the U.S. Air Force!

Interested? The place to find out more is at the office of the Professor of Aerospace Studies, if there is an Air Force ROTC unit on your campus. Ask about the new 2-year AFROTC program available at many colleges and universities. If you prefer, mail the coupon below.



Air Force ROTC	28
Maxwell Air Force Base, Ala. 36112	
Name _____	
College _____ Class of 19 _____	
Address _____	
City _____ State _____ Zip _____	

UNITED STATES AIR FORCE



NCAA Member

## STUDENTS, SPECTATORS!

NOISE is a serious problem at many inter-collegiate football games, and on some occasions has prevented the quarterback's signals from being heard. Such a situation may be interpreted as "interference" with the conduct of the game, and penalized. We seek your assistance in preventing excessive noise, which could cause a penalty.

Should unusual noise develop, the Referee will call "Time-Out" and instruct the Defensive Captain to request QUIET, which he will do by moving toward the noise area with both arms and hands raised. If necessary the Offensive Captain will make the same request on the opposite side of the field. We shall appreciate your respect for Sportsmanship in remaining quiet at this time. Please cooperate. Don't help to draw a penalty against your team.

## 1966 FRESHMAN SCHEDULE AND RESULTS

Date	Opponent	Site	UK	Opp.
Oct. 7	Tennessee Frosh (A)	.....	14	21
Oct. 14	Va. Tech Frosh (A)	.....	37	8
Oct. 20	Cincinnati Frosh (H)	.....	20	14
Oct. 29	Vanderbilt Frosh (H)	....	42	8

## 1965 RESULTS (Freshmen)

(Won 2, Lost 2)

7	Vanderbilt Frosh (A)	0
12	Va. Tech Frosh (H)	36
19	Cincinnati Frosh (A)	15
0	Tennessee Frosh (H)	40
38		91



## — Athletics At Kentucky —

Kentucky's athletic program, a well-balanced and ambitious activity featuring inter-collegiate competition in ten different sports, is organized under the Department of Athletics and a corporation known as the University of Kentucky Athletics Association.

The program is conducted without overemphasis or sacrifice of educational objectives and in strict compliance with the rules of the University, the Southeastern Conference and the National Collegiate Athletic Association.

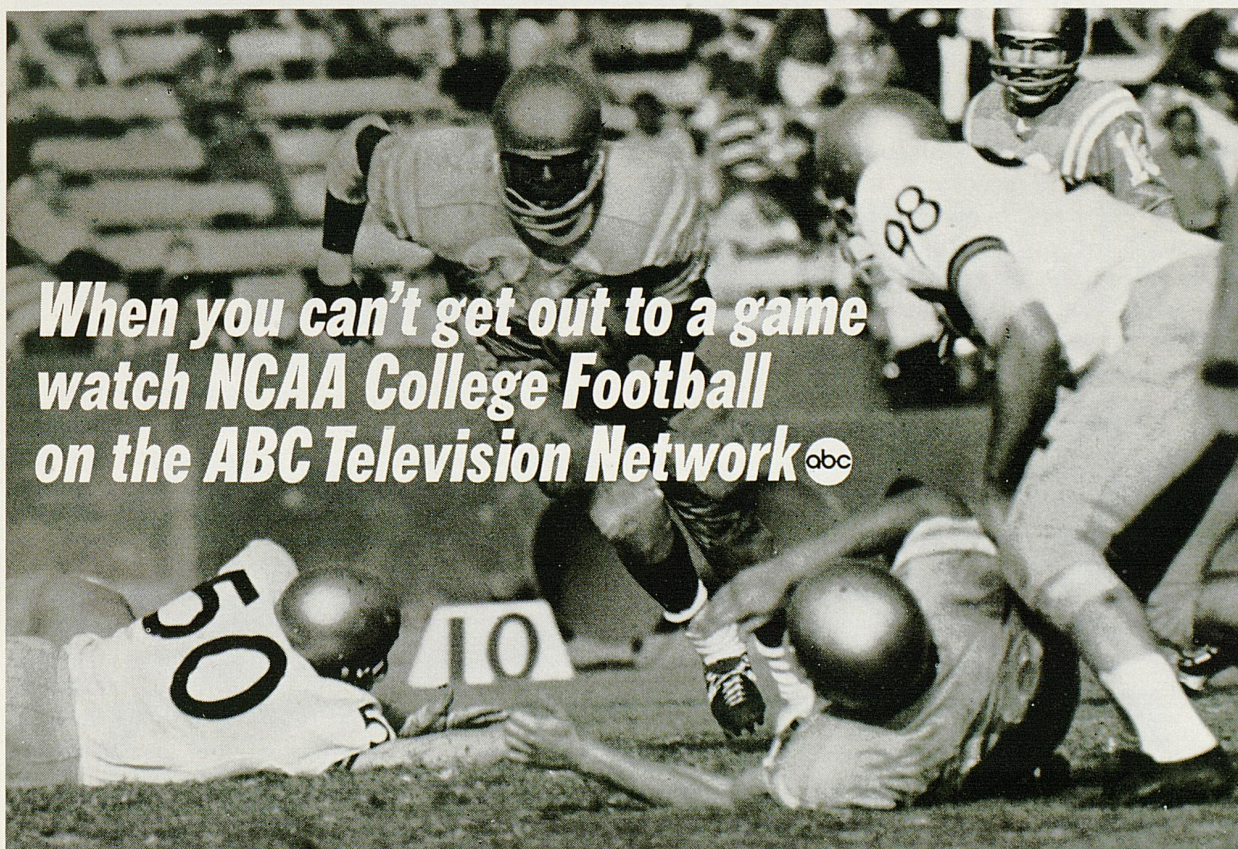
A board of directors, headed by University President John W. Oswald in the capacity of chairman, maintains overall policy supervision of the athletic program. Ex-officio members, in addition to the president, include Vice Presidents Robert Johnson and Glen Creech, Dr. W. L. Matthews in the capacity of secretary to the board, and a student representative—all appointed by the president. Twelve other men, drawn from the University faculty and the general public, also serve on the board as appointees of the president.


Supervising the steady growth and balanced

development of one of the nation's top athletic programs is Bernie A. Shively, a former Illinois grid All-American and a veteran of over 25 years in the post of Director of Athletics.

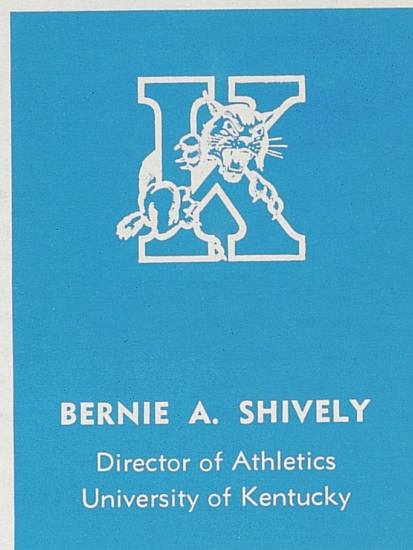
The Association's Board of Directors is composed of the following:

Dr. John W. Oswald, Chairman  
Robert Johnson, Vice Chairman  
Dr. W. L. Matthews, Jr., Secretary  
Dr. Ralph Angelucci  
Prof. David Blythe  
Dr. Aubrey Brown  
Dr. Loren Carlson  
Dr. Thomas Clark  
Dr. Glen Creech  
Dr. John Douglas  
Dr. Lyman Ginger  
Dr. A. D. Kirwan  
Carson Porter (Student)  
Douglas Parrish  
James H. Pence  
Dr. Douglas Schwartz  
Floyd Wright



***When you can't get out to a game  
watch NCAA College Football  
on the ABC Television Network ***





## Bernie Shively — A Veteran Administrator . . .

Behind every successful athletic program in the country today is a capable administrator who diligently attends the many and varied responsibilities connected with a big business operation.

University of Kentucky is fortunate to have the services of one of the nation's most widely-respected Directors of Athletics in the person of Bernie A. Shively. A veteran of 28 years on the job, "Shive" (as he is familiarly known to thousands of sports fans) is a tall, silver-haired, former football All-American who has gained widespread respect and recognition for his fair-minded guidance of a harmonious program that today features September to June activity in 10 different sports and involves the use of facilities valued at several million dollars.

In addition to a fair-minded policy direction that has resulted in "big time" stature for the school's athletic teams, Shively during his 28-year tenure has directly supervised major expansions in the physical plant designed to keep pace with the growing patronage by a sports-minded public. Among these have been the doubling of the seating capacity of Stoll Field, construction of a four-million-dollar coliseum and preparation of a spacious sports center to

provide top facilities for spring sports teams and football practice.

Shively's first claim to fame came during undergraduate days at University of Illinois as he achieved All-America recognition as a guard on the 1926 grid team made famous by teammate Red Grange. The future UK Athletic Director also won the Big 10 heavyweight wrestling title and lettered in track.

Following graduation in 1927, he accepted a position at UK as a line coach in football to start a long-time association. In the days since, he has served as head football coach for one year (1945), track and baseball coach and headed the physical education department.

Shively also has found time to be active in civic and alumni affairs and has attained national prominence through dedicated service in national athletic organizations. He currently holds membership in the powerful NCAA Executive Committee. Only recently, he completed a second term as chairman of the University Division NCAA Basketball Tournament Committee and formerly served with the NCAA Summer Baseball group.





A sure winner  
for convenient  
banking

*Central*  
**BANK & TRUST CO.**

SHORT AND UPPER STREETS  
LEXINGTON, KENTUCKY

Now In Lexington...

ONE OF THE SOUTH'S *Finest* Motels



110 Luxurious Rooms • Cocktail Lounge  
Banquet & Meeting Rooms • Two Dining Rooms  
Swimming Pool & Patio • Dancing Nitely



**Imperial House Motel**

U.S. 68 Waller Ave. at Harrodsburg Road  
Phone 255-2540 for Reservations



## 1966 KENTUCKY FOOTBALL SCHEDULE AND RESULTS

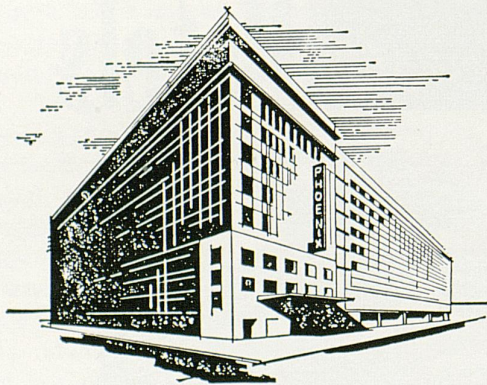
Date	Opponent	Site	UK	Opp.	Date	Opponent	Site	UK	Opp.
Sept. 17	*North Carolina (H)	.....	10	0	Oct. 22	Georgia (A)	.....	15	27
Sept. 24	*Mississippi (N)	.....	0	17	Oct. 29	West Virginia (A)	.....	14	14
Oct. 1	*Auburn (H)	.....	17	7	Nov. 5	Vanderbilt (K-Day)	.....	Home	
Oct. 8	*Virginia Tech (H)	.....	0	7	Nov. 12	Houston (HC)	.....	Home	
Oct. 15	Louisiana State (H)	.....	0	30	Nov. 19	Tennessee (TV)	.....	Away	

\* Night game

# Turf Catering Co.

*"Serving Keeneland Association, Breeders Sales,  
Lexington Trots, and Oaklawn Jockey Club at  
Hot Springs, Arkansas"*

## *Lexington's Largest and Finest!*



Kentucky's Convention  
Headquarters  
120 E. Main St.  
Downtown Lexington, Ky.  
Phone 255-3210

### FEATURING

Le Deauville

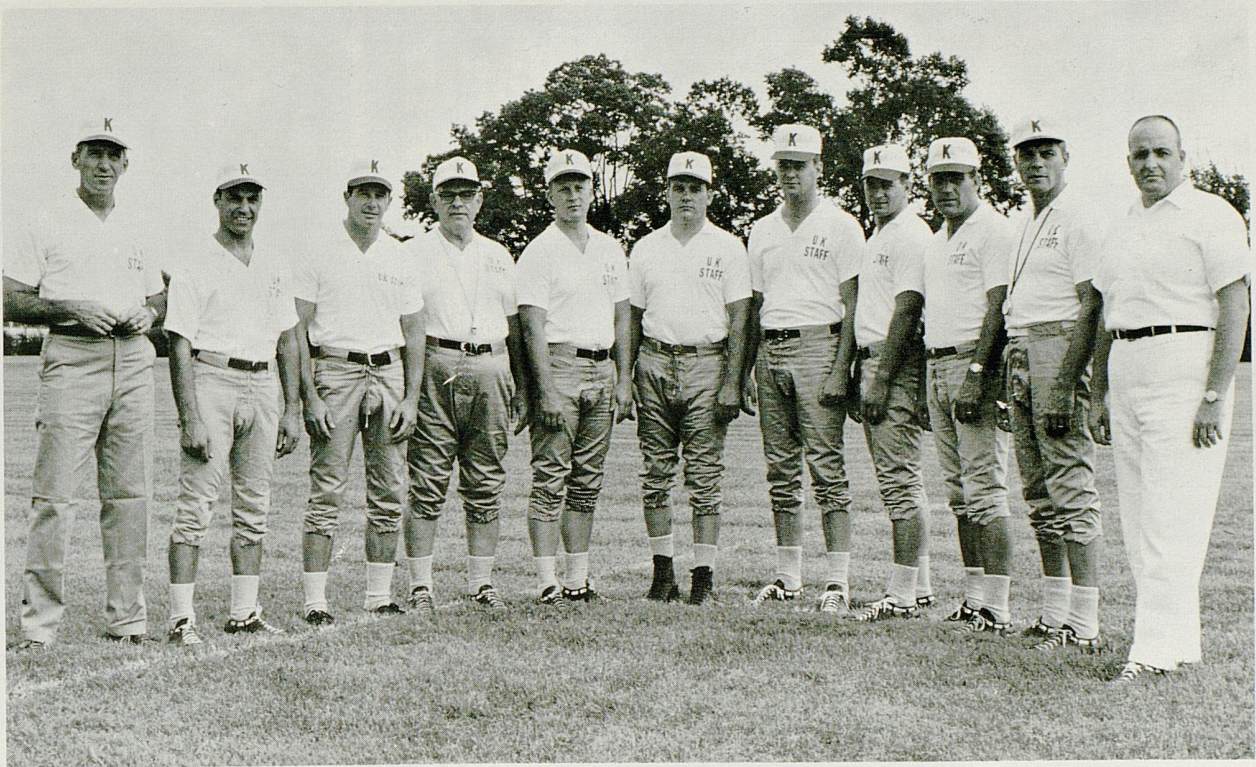
RESTAURANT

and LOUNGE

- FREE PARKING
- BEVERAGE & FREE ICE MACHINE  
ON EACH GUEST FLOOR
- 100% AIR CONDITIONED
- TV IN ALL ROOMS
- ALL ROOMS REMODELED  
AND REDECORATED
- COFFEE SHOP AND DINING ROOM  
WITH ECONOMICAL PRICES

**PHOENIX HOTEL**





Head Coach Charlie Bradshaw (left) poses with the aides who will be working with him in 1966. From the left, they include Phil Owen, Leon Fuller, Clarence Underwood, Wally English, Jim Poynter, Doug Shively, Charley Pell, Ray Callahan, George Sengel and Trainer Ralph Berlin.

## Wildcat Coaching Staff

**RAY CALLAHAN (Kentucky '56)**—No stranger in state grid circles, Callahan is a former Kentucky back and guard from Lebanon who enjoyed a highly-successful coaching career in prep ranks following graduation . . . Prior to joining Bradshaw staff in 1963, he assisted at Versailles and Manual High and guided Danville to state AA title.

**WALLY ENGLISH (Louisville '58)**—A former quarterback for the U. of L. Cardinals, English works with the offensive backfield. He has a background of playing and coaching experience in Kentucky and Texas. First joined Bradshaw staff in 1965 as graduate assistant.

**LEON FULLER (Alabama '61)**—This new addition to the UK staff, who tutors the defensive backfield, played his final two seasons at Alabama when Bradshaw was an assistant. He won All-SEC honor as a defensive back and was named on the Academic All-America.

**PHIL OWEN (Georgetown '53)**—Like five other current Wildcat assistants, Owen entered collegiate coaching ranks by making Kentucky his first stop . . . Joined Bradshaw staff in 1964 after successful, nine-year tenure at Mt. Sterling High . . . He directs talented frosh team this season.

**CHARLEY PELL (Alabama '63)**—Entering his second season on the Kentucky staff, Pell enjoys the confidence of his new boss stemming from a three-year player and coach relationship while both were at Alabama . . . Works with the defensive interior line.

**JIM POYNTER (Kentucky '61)**—One of four former Wildcats on the staff, Poynter had a great high school coaching career before returning to UK early this year. In five seasons at three schools, his teams posted composite record of 40-10-1.

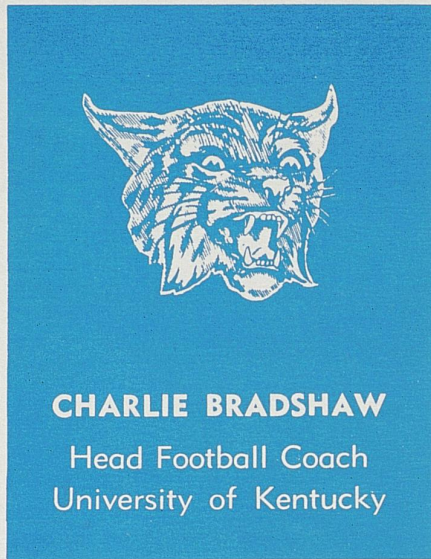
**GEORGE SENDEL (Kentucky '48)**—Louisvillian Sengel's career as a Wildcat wingman overlapped that of Coach Bradshaw by a couple of years and his former teammate asked Sengel to stay on the staff he had joined in 1961 . . . The 44-year-old Air Force vet had nine years of coaching schoolboy ranks in Florida and Kentucky prior to becoming UK end coach.

**DOUG SHIVELY (Kentucky '59)**—A youthful veteran of seven years in the coaching profession, Shively is a former Wildcat wingman and son of UK's Athletic Director. After one season at a Texas high school, Doug moved to Virginia Tech—his point of departure in coming to UK.

**CLARENCE UNDERWOOD (Marshall '38)**—Back "home" after 10-year absence, this tough-but-popular veterans has responsibility of shoring up UK defense. Spent 8 years here prior to successful 10-year stint at Jefferson High in Port Arthur, Texas. Compiled 77-26-6 record and was state "Coach of the Year."

**RALPH BERLIN (Iowa State '62)**—This 30-year-old Marine Corps veteran serves as head football trainer for the Wildcats . . . He's a veteran of six years in training field.





## Wildcat Coach Sets Winning Tradition . . .

After four hectic years, Charlie Bradshaw stands high as a coach and gentleman fully vindicated in his promise to rebuild the shattered foundations of Kentucky football into a solid front and re-establish a winning tradition.

Exemplifying the faith placed in his hard work philosophy and procedures is the unique "lifetime" contract tendered the youthful and determined ex-Wildcat upon the successful (6-4) completion of an adversity-plagued 1965 season. The new pact, believed unique to college-coach relationships, assures Bradshaw of tenure similar to that given academic personnel. At such time as he ceases to perform his current coaching duties, he will have the opportunity to take another position on the University staff.

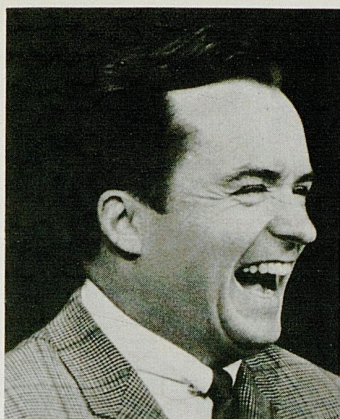
Bradshaw, a 41-year-old former UK end and assistant coach, returned to his alma mater in 1962 to take on the difficult task of repairing a sputtering Kentucky football machine that had not run well since the early fifties Bowl Era.

The magnitude of the repair job never will be fully understood by anyone less closely connected with it than the self-sacrificing Bradshaw. Only

he could take a positive approach to the almost impossible problems—and, more importantly, stick with it in the face of increasing odds. How he tackled the assignment of producing a winner out of the meager raw material reflects the type of person Charlie Bradshaw is—the personification of qualities of inner fortitude, outwardly serious demeanor, ability, confidence, integrity and quiet determination. He is an inspirational leader possessing the valuable trait of exuding enthusiasm and confidence to a degree that inspires those around him—players and assistants—to get the job done in a way that pays off with success. He demands great effort of himself and others in the belief that success cannot be purchased easily.

Bradshaw's influence not only is paying off with success on the gridiron—his 1965 team posted the school's best record since 1956—but also is being felt around the state. Coaches, alumni, general public and prospective Wildcats are rallying to the side of Bradshaw's long-range program in a fashion never before seen in the State of Kentucky.





**Brisk  
and  
Breezy  
TV's  
Biggest  
Stars  
Perform  
on The  
Mike  
Douglas  
Show \***



**4 P.M.  
Daily  
On**



*Enjoy friendly service always . . .*  
**FROM YOUR GOOD NEIGHBOR ASHLAND OIL DEALER**



Yes, your Good Neighbor Ashland Oil Dealer offers friendly, helpful service and the finest petroleum products . . . like Ashland Vitalized Gasoline and Valvoline Motor Oil. And when you need tires, batteries or accessories, you can buy with confidence at an Ashland Oil Service Station—because your Good Neighbor Ashland Oil Dealer stands behind the products he sells.

Drive in soon. Get to know your Good Neighbor Ashland Oil Dealer. You'll like his fine petroleum products and his fast, friendly, expert service.

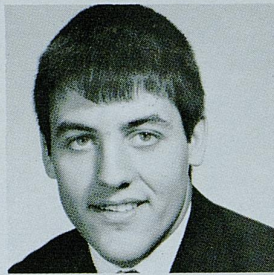


**ASHLAND OIL & REFINING COMPANY**  
Ashland, Kentucky





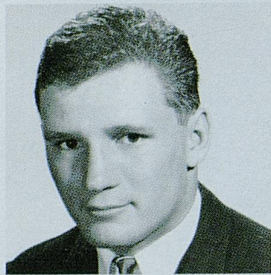
MIKE CASSITY



BILL CARTWRIGHT



JERRY DAVIS



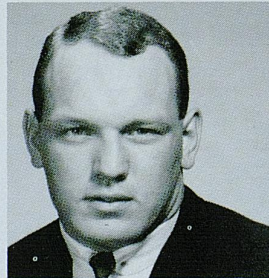
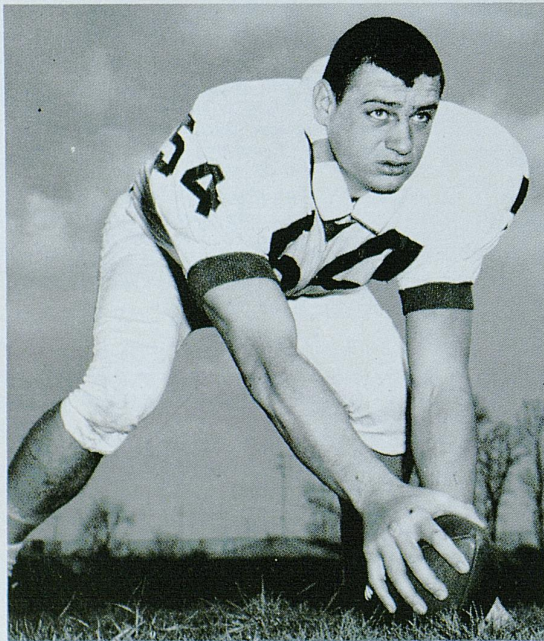
JOE CARROLL



AL PHANEUF

# KENTUCKY

CALVIN WITHROW



MIKE BEIRNE



BOB BARTKOW



CHUCK ARNOLD



TOM ANDERSON



# YOUNG HO! GO CHEVRON!

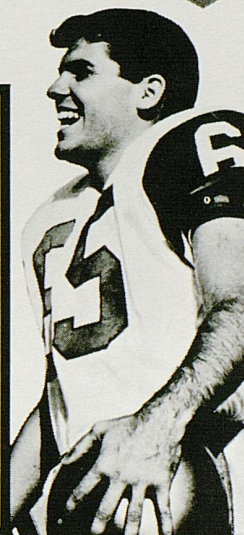


Follow the WILDCATS in '66



**ON THE  
STANDARD OIL  
RADIO  
NETWORK**

<b>WVLK</b> Lexington	<b>WINN</b> Louisville	<b>WOMI</b> Owensboro	<b>WDXR</b> Paducah
<b>WCMJ</b> Ashland	<b>WIEL</b> E. Town	<b>WHOP</b> Hpk'ville	<b>WMLF</b> Pineville
<b>WLBK</b> Bwl'g Green	<b>WFKY</b> Frankfort	<b>WKIC</b> Hazard	<b>WPKE</b> Pikeville
<b>WCTT</b> Corbin	<b>WHIR</b> Danville	<b>WFTM</b> Maysville	<b>WKAY</b> Glasgow
<b>WSIP</b> Paintsville	<b>WNGO</b> Mayfield	<b>WSFC</b> Somerset	



LEXINGTON'S #1 STATION YEAR after YEAR

CBS **WVLK** 590

UK FOOTBALL  
STANDARD OIL SPORTS NETWORK

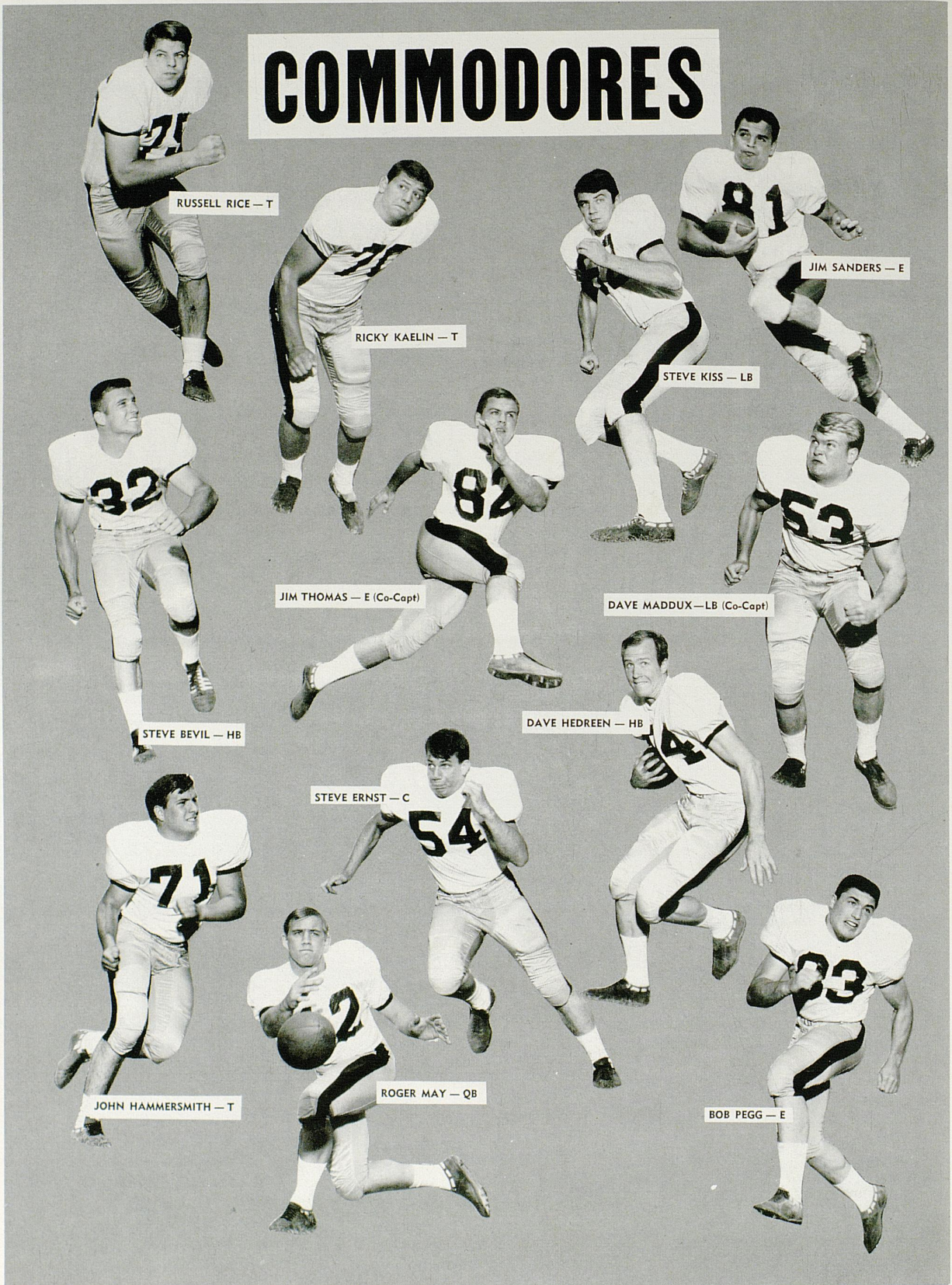
- ★ Plus - "Pick-of-Dixie"
- ★ SEC Game of The Week
- ★ Cleveland Browns
- ★ Cincinnati Reds
- ★ ★ ★ ★ ★



CLAUDE SULLIVAN



# COMMODORES



RUSSELL RICE — T

RICKY KAEIN — T

JIM SANDERS — E

STEVE KISS — LB

JIM THOMAS — E (Co-Capt)

DAVE MADDUX — LB (Co-Capt)

STEVE BEVIL — HB

DAVE HEDREEN — HB

STEVE ERNST — C

JOHN HAMMERSMITH — T

ROGER MAY — QB

BOB PEGG — E



'SEATS ON  
THE FIFTY-  
YARD LINE'



EVERYDAY YOU  
BANK WITH THE  
WINNING 'TEAM' OF OVER  
350 EMPLOYEES AT FIRST SECURITY ...  
YOUR FULL-SERVICE BANK WITH  
SEVEN CONVENIENT LOCATIONS.

**First Security**  
NATIONAL BANK AND TRUST COMPANY

Member FDIC

Member Federal Reserve System

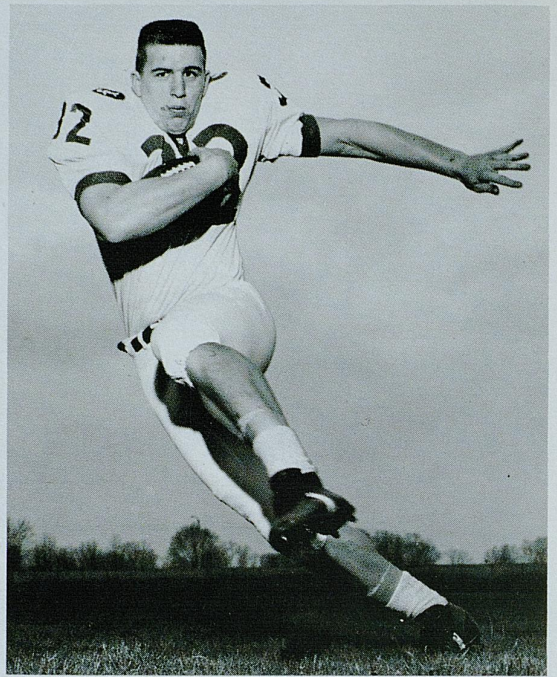




TOM FEE



BOB FRIEBERT



LARRY SEIPLE



DENNIS DRINNEN

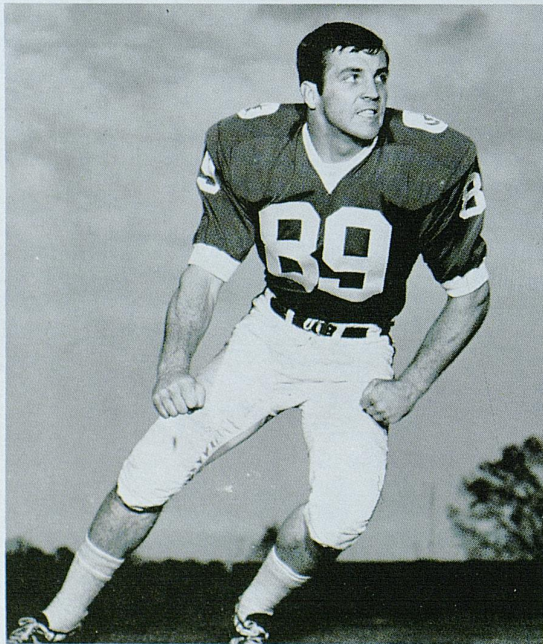


TOM FERGUSON

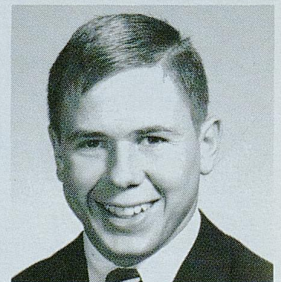


KENTUCKY

RICH MACHEL



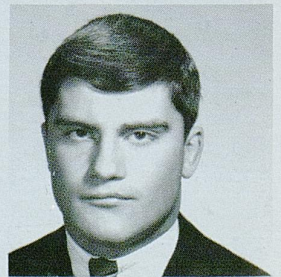
DON CHACOS



DAVID CHILDRE



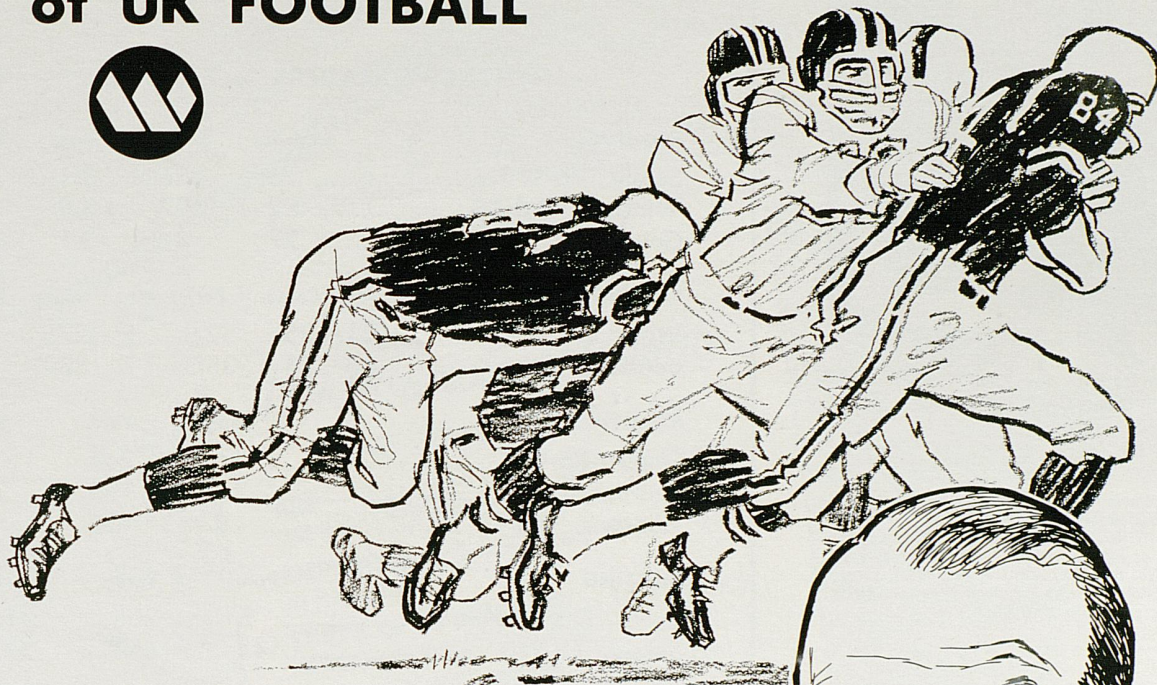
HOMER GOINS



ROD CLOYD



## Hear the *GOING SOUND* of UK FOOTBALL



### Follow the Wildcats with Cawood Ledford on 'H-A-S 840 Radio!



#### Cawood Calls Football

Before each game, Purnell's "Old Folks" Sausage sponsors a special program of football stories and interviews with sports director Cawood Ledford.

#### Football Warmup

Ten minutes prior to game time, Jerry's Drive-In Restaurants present Cawood with opponents' records, histories and rivalries.

#### EVERY UK FOOTBALL GAME

Cawood's play-by-play calls of UK football games are co-sponsored by Your Friendly SINCLAIR DEALER and EAST KENTUCKY Rural Electric Co-operatives.

#### S.E.C. FOOTBALL

Keep up with the Wildcats' opponents . . . exciting football every week.



# WHAS 840 RADIO





W. H. Davis (left), Alcoa's General Manager—Industrial Relations, says: "We've found that Army ROTC graduates with active duty experience as officers possess better than average initiative, foresight, and responsibility. These are qualities we rate very highly, and we gladly pay a premium to get them."

## Why did Alcoa hire Rod Wilson?

Because Alcoa needs men to fill key positions—men capable of moving to the top; men who seek and measure up to responsibility. Rod Wilson is that kind of man. An Army ROTC Distinguished Military Graduate at Colorado State University, Rod won an officer's commission in the Regular Army along with his degree. Forty-four months of active duty, including 16 months overseas as an artillery commander, earned Rod Wilson 24-carat credentials as a leader, a man schooled in the demanding disciplines of command, the kind of man Alcoa looks for.

If you're this kind of man, prove it to yourself, and to the companies like Alcoa who are looking for you. How? Get in Army ROTC. Stay with Army ROTC, all the way to success.

# ARMY ROTC

## STATISTICALLY SPEAKING

### KENTUCKY LEADERS — 7 GAMES

RUSHING	Carries	Gain	Avg.	TD's
Seiple, TB-WB .....	76	236	3.1	1
Windsor, WB-TB .....	52	197	3.9	1
Goins, TB .....	27	84	3.1	0

PASSING	Att.	Comp.	Pct.	Int.	Gain	TD's
Walz, QB .....	44	25	52.3	2	276	0
Beadles, QB .....	60	23	38.3	7	339	3

RECEIVING	Caught	Yards	TD's
Seiple, TB-WB .....	16	244	3
Spanish, E .....	14	196	0
Windsor, WB-TB .....	9	112	0

PUNTING	Punts	Yards	Avg.
Lyons, DHB-TB-FB .....	5	208	41.6
Seiple, TB-WB .....	44	1654	37.6

SCORING	TD's	Convs.	FG's	Points
Seiple, TB-WB .....	4	1	0-0	24
Arnold, KS .....	0	6-6	2-3	12

### VANDERBILT LEADERS — 6 GAMES

RUSHING	Carries	Gain	Avg.	TD's
Whiteside, FB .....	54	164	3.0	1
May, QB .....	35	101	2.9	0

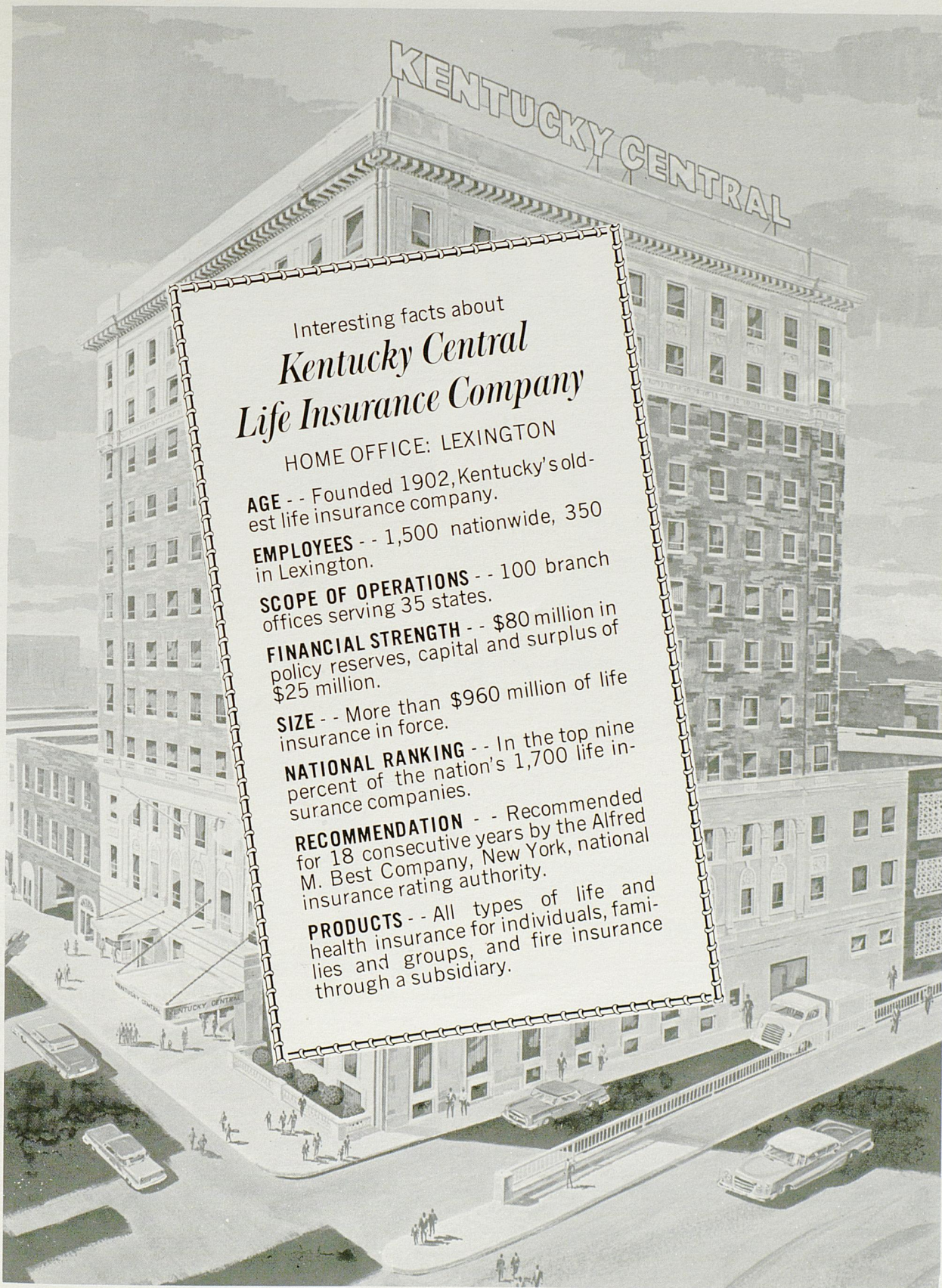
PASSING	Att.	Comp.	Pct.	Int.	Gain	TD's
Davis, QB .....	82	37	45.1	5	442	0
May, QB .....	20	8	40.0	2	49	1

RECEIVING	Caught	Yards	TD's
Boyd, E .....	13	142	0
Skupas, E .....	12	139	1

PUNTING	Punts	Yards	Avg.
Maclean, KS .....	44	1663	38.7

SCORING	TD's	Convs.	FG's	Points
Davis, QB .....	2	0-0	0-0	12
(Six others have 6 points apiece)				





Interesting facts about  
***Kentucky Central***  
***Life Insurance Company***

HOME OFFICE: LEXINGTON

**AGE** - - Founded 1902, Kentucky's oldest life insurance company.

**EMPLOYEES** - - 1,500 nationwide, 350 in Lexington.

**SCOPE OF OPERATIONS** - - 100 branch offices serving 35 states.

**FINANCIAL STRENGTH** - - \$80 million in policy reserves, capital and surplus of \$25 million.

**SIZE** - - More than \$960 million of life insurance in force.

**NATIONAL RANKING** - - In the top nine percent of the nation's 1,700 life insurance companies.

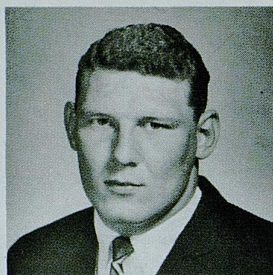
**RECOMMENDATION** - - Recommended for 18 consecutive years by the Alfred M. Best Company, New York, national insurance rating authority.

**PRODUCTS** - - All types of life and health insurance for individuals, families and groups, and fire insurance through a subsidiary.





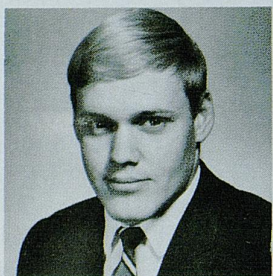
JACK GAWLER



RONNIE ROBERTS



MIKE McGRAW



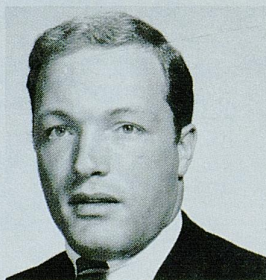
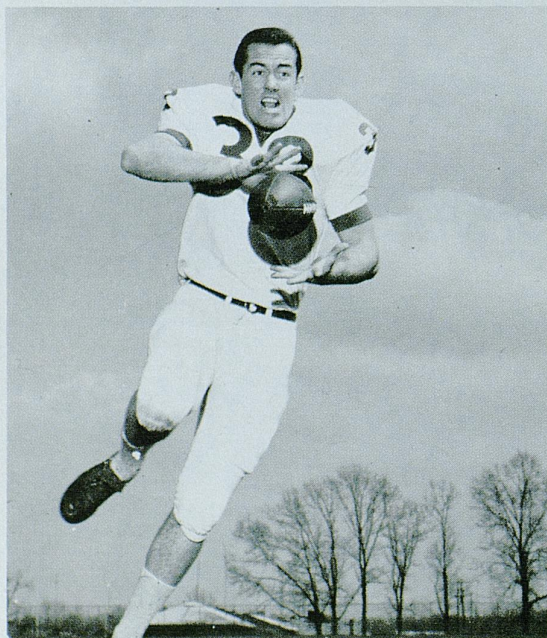
KERRY CURLING



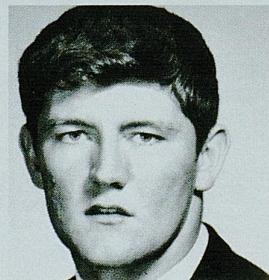
GEORGE KATZENBACH

# KENTUCKY

BOB WINDSOR



GEORGE McCLELLAN



DWIGHT LITTLE



DOYLE KING



BASIL MULLINS

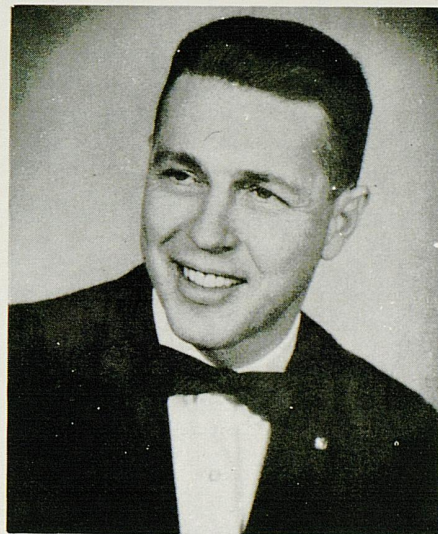




# WBLG presents KENTUCKY FOOTBALL

**BILL SORRELL**

Play-by-Play  
Announcing  
of All Games



**GEORGE CONLEY**

Color and comment on  
the broadcasts of all home games

## BROADCASTS OF ALL U.K. GAMES PRESENTED BY

FRISCH'S  
DRIVE-IN RESTAURANTS

DIXIE-BELL  
DAIRY

SEVEN-UP

AMERICAN  
DAIRY ASSOCIATION

DAWAHARE'S  
DEPARTMENT STORE

MEADOW GOLD  
DAIRY

# WBLG

the BLUE Grass station • dial 1300



## VANDERBILT

10	Cloyce Darnell, Sr., SAF	21	6-1	201	Boaz, Ala.
12	Roger May, Jr., QB	20	6-0	185	Pensacola, Fla.
14	Bob Kerr, Sr., QB	21	6-1	190	Birmingham, Ala.
15	Bernie Kemple, Sr., SAF	20	6-0	170	Kirkwood, Mo.
16	Lee Noel, Soph., HB	19	5-10	185	Nashville, Tenn.
17	Gary Davis, Jr., QB	21	6-2	195	LaMirado, Calif.
20	Rusty Cantwell, Jr., HB	19	5-8	172	Morristown, Tenn.
22	Dan Lipperman, Soph., HB	19	6-0	173	Bellaire, Ohio
23	Wiley Maiden, Sr., HB	21	6-1	177	Memphis, Tenn.
25	John Gamble, Sr., HB	21	6-0	185	Tuscumbia, Ala.
30	Charlie Orth, Sr., HB	21	6-0	180	Evansville, Ind.
32	Steve Bevil, Sr., HB	21	6-1	180	Chattanooga, Tenn.
33	Don North, Soph., HB	18	6-1	185	Lynchburg, Va.
34	Trow Gillespie, Soph., HB	19	6-0	175	Memphis, Tenn.
35	Bob Goodridge, Jr., MM	20	6-2	195	Cincinnati, Ohio
41	Dave Semlow, Sr., HB	20	6-0	180	Chicago, Ill.
42	John Bruno, Sr., FB	21	5-9	180	Jackson, Miss.
43	DeWitt Thompson, Jr., HB	20	5-11	200	Nashville, Tenn.
44	Jim Whiteside, Jr., FB	19	6-2	214	Glasgow, Ky.
45	Chip Healy, Soph., MM	19	6-0	220	Lookout Mt., Tenn.
53	Dave Maddux, Sr., LB	20	6-2	208	Hopkinsville, Ky.
54	Steve Ernst, Soph., C	19	6-3	220	Evansville, Ind.
55	Butch Brown, Jr., C	20	6-1	195	Johnson, City, Tenn.
60	Mike Greene, Jr., PG	20	5-11	200	Chicago, Ill.
61	Terry Thomas, Soph., LB	19	6-1	210	Rosedale, N. Y.
62	Steve Kiss, Sr., LB	21	6-2	190	Decatur, Ill.
63	John Shugart, Soph., G	19	6-0	210	Camp Hill, Pa.
64	Frank Curtin, Jr., DT	20	6-1	215	Haverton, Pa.
65	Mike Dawson, Sr., OG	21	6-0	195	Arlington Hts., Ill.
67	Scott Hall, Jr., OG	20	6-0	215	Tulsa, Okla.
68	Jerry Prior, Sr., OG	21	6-0	220	Morton Grove, Ill.
69	Sid Ransom, Jr., LB	20	6-0	205	Rome, Ga.
70	Rickie Kaelin, Soph., OT	19	6-5	250	Louisville, Ky.
71	John Hammersmith, Sr., OT	21	6-0	225	Chicago, Ill.
72	Kelly Meyer, Soph., MG	19	6-4	208	Pine Bluff, Ark.
73	Don Booker, Jr., OT	20	6-3	220	Kingsport, Tenn.
74	Dan Cundiff, Jr., OT	19	6-3	222	Louisville, Ky.
75	Russell Rice, Sr., DT	21	6-0	220	Jackson, Tenn.
76	Tim Theis, Soph., OT	18	6-2	230	Frederick, Md.
80	George Parker, Sr., DT	21	6-0	240	Louisville, Ky.
88	Chuck Boyd, Jr., OE	20	5-11	183	Madison, Tenn.
81	Jim Sanders, Sr., OE	20	5-8	160	Johnson City, Tenn.
82	Jim Thomas, Sr., DE	22	6-1	205	Medina, Ohio
83	Bob Pegg, Soph., DE	19	6-1	215	Coeur d'Alene, Idaho
84	Bob Ivey, Jr., OE	20	6-3	201	Decatur, Ga.
86	Jack Calhoun, Jr., Sp.	19	6-0	178	Jackson, Tenn.
87	Steve Skupas, Sr., OE	21	6-3	208	Evansville, Ind.
88	Chuck Ousley, Sr., OE	21	6-2	195	Jackson, Tenn.
89	Fred Klaasen, Jr., OE	20	6-1	197	Cleveland, Ohio
90	Alex Maclean, Soph., Sp.	19	5-10	180	St. Louis, Mo.

## KENTUCKY

12	Roger Walz, Sr., QB	22	5-10	171	Ft. Thomas, Ky.
14	Terry Beadles, Jr., QB	20	5-11	192	Fulton, Ky.
15	Tom Ferguson, Soph., LB	19	5-11	182	Ashland, Ky.
16	Bob Barkow, Sr., QB	21	6-0	187	Rockville, Md.
17	Jim Prather, Soph., QB	19	6-0	186	Cincinnati, Ohio
18	Rod Cloyd, Soph., DHB	19	6-0	193	Lawrenceburg, Ky.
21	Mike Granato, Soph., SAF	20	6-1	180	Cumberland, Ky.
22	Tom Fee, Jr., DHB	21	5-9	171	Uniontown, Pa.
23	Homer Gains, Jr., TB	22	5-11	191	Everts, Ky.
24	Dicky Lyons, Soph., DHB-FB	19	6-0	183	Louisville, Ky.
25	Jerry Davis, Sr., SAF	22	5-10	180	Fairborn, Ohio
30	Don Chacos, Soph., WB	19	6-2	186	Bethesda, Md.
32	Larry Seipie, Sr., TB-WB	21	5-11	205	Allentown, Pa.
33	Steve Gray, Soph., DHB	19	6-2	189	Detroit, Mich.
34	Al Phaneuf, Soph., DHB	22	6-0	190	Montreal, Quebec
36	Joe Carroll, Jr., FB	21	5-9	185	Sharon Hill, Pa.
38	Bob Windsor, Sr., WB-TB	24	6-4	216	Silver Spring, Md.
40	Mike McGraw, Sr., LB	21	5-11	205	Ft. Thomas, Ky.
41	Don Britton, Jr., FB	22	5-10	199	Broomall, Pa.
42	Kerry Curling, Jr., DG	20	5-10	189	Princeton, Ky.
43	Rodger Hart, Jr., LB	21	5-9	178	Albertville, Ala.
44	Bill Jansen, Soph., LB	19	5-11	188	Louisville, Ky.
45	George McClellan, Jr., LB	23	5-10	180	Bristol, Tenn.
46	Ken Wood, Soph., LB	19	6-0	193	Montgomery, Ala.
50	John Harris, Soph., LB-C	19	6-2	200	Highland Park, Ill.
51	Bill Carwright, Soph., C	19	6-0	203	Princeton, Ky.
52	Eddie Ingram, Soph., C-G	20	5-10	185	Dyersburg, Tenn.
54	Calvin Withrow, Sr., C	21	6-0	218	Kettering, Ohio
55	Ronnie Roberts, Jr., LB	20	6-3	225	Louisville, Ky.
60	Mike Beirne, Jr., OG	21	6-1	206	McKeesport, Pa.
61	Mike Cassidy, Jr., OG	21	6-2	210	Xenia, Ohio
62	David Childre, Soph., OG	18	6-0	188	Henderson, Ky.
63	Doyle King, Soph., DT	19	6-1	214	Mt. Sterling, Ky.
64	Rich Machel, Sr., DG	21	6-1	202	Pittsburgh, Pa.
65	Jim Gresham, Jr., DG-DT	20	6-0	223	Jeffersonville, Ind.
66	Wesley Nails, Soph., OG	20	6-2	222	Loyal, Ky.
67	Louis Wolf, Soph., OG	19	5-11	192	Louisville, Ky.
68	Ed Zaremba, Soph., DT	20	6-2	203	Parma, Ohio
69	Dick Palmer, Soph., DG-DT	19	6-1	208	Huntsville, Ala.
71	Bob Friebert, Soph., OT	19	6-2	213	Louisville, Ky.
72	Jack Gawler, Jr., DT	20	6-1	235	Rockville, Md.
73	Marty Joyce, Soph., DT	19	6-1	236	Wilmington, Del.
74	Dennis Drinnen, Soph., OT	19	6-1	224	Loveland, Ohio
75	Scott Valentine, Soph., OT	19	6-0	220	Fairfax, Va.
76	Dwight Little, Jr., OT	20	6-3	226	Marion, Ky.
77	Leonard Rush, Soph., OT	19	6-2	226	Hamilton, Ohio
78	Basil Mullins, Sr., DT	22	6-4	215	Paintsville, Ky.
79	George Katzenbach, Soph., DT	20	6-1	227	Philadelphia, Pa.
80	Phil Greer, Soph., OE	19	6-2	192	Burdine, Ky.
81	Tom Anderson, Jr., DE-OE	22	6-0	177	Birmingham, Ala.
82	Dan Spanish, Sr., OE	21	5-10	195	New Castle, Pa.
83	Derek Potter, Soph., OE	19	6-2	199	Elkhorn City, Ky.
84	Tommy Sauer, Soph., OE	20	5-11	189	Owensboro, Ky.
85	Jim Swart, Sr., DE	21	6-2	224	Louisville, Ky.
86	Joe David Smith, Sr., DE	21	6-1	205	Mayfield, Ky.
87	Doug Van Meter, Jr., DE	20	6-0	200	Owensboro, Ky.
88	Jeff Van Nore, Soph., DE	20	6-1	210	Anchorage, Ky.
89	John Zeles, Soph., DE-OE	20	6-2	191	Phoenixville, Pa.
90	Chuck Arnold, Sr., KS	21	6-1	210	Howell, Mich.



20 Chick Almond, 31, NJ  
21 6-1 Z10  
22  
23  
24  
25  
26  
27  
28  
29  
30  
31  
32  
33  
34  
35  
36  
37  
38  
39  
40  
41  
42  
43  
44  
45  
46  
47  
48  
49  
50  
51  
52  
53  
54  
55  
56  
57  
58  
59  
60  
61  
62  
63  
64  
65  
66  
67  
68  
69  
70  
71  
72  
73  
74  
75  
76  
77  
78  
79  
80  
81  
82  
83  
84  
85  
86  
87  
88  
89  
90  
91  
92  
93  
94  
95  
96  
97  
98  
99  
100



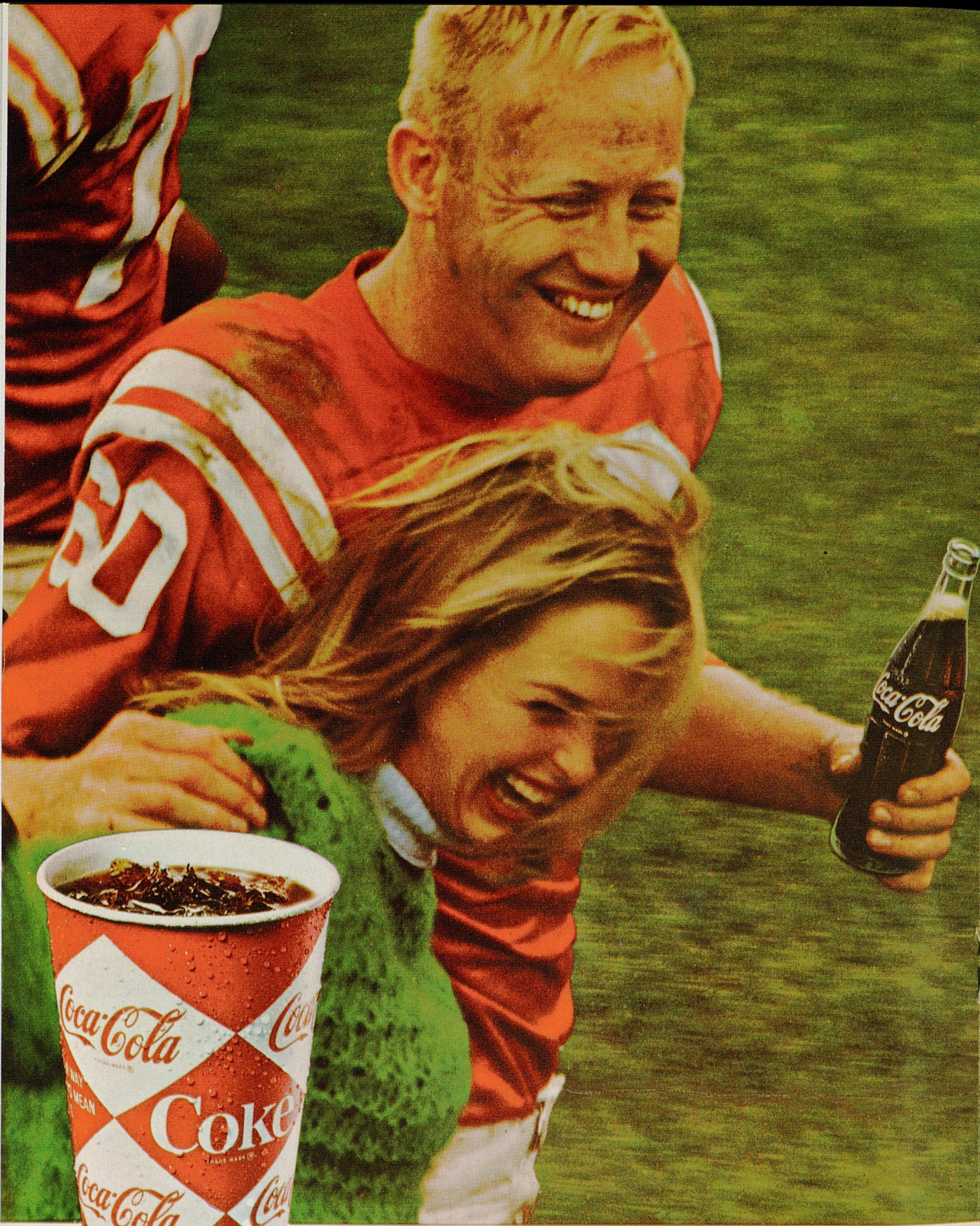
# IN '67 BUICK

Get in with the In Crowd in a GS-400



BUICK MOTOR DIVISION





things go  
better  
with  
**Coke**  
TRADE MARK

**FOR THE TASTE YOU**



### OFFENSE

- 80 CHUCK BOYD . . . . . SE
- 71 JOHN HAMMERSMITH . ST
- 62 STEVE KISS . . . . . SG
- 55 BUTCH BROWN . . . . . C
- 64 FRANK CURTIN . . . . . PG
- 78 GEORGE PARKER . . . . . PT
- 87 STEVE SKUPAS . . . . . PE
- 12 ROGER MAY . . . . . QB
- 33 DON NORTH . . . . . TB
- 44 JIM WHITESIDE . . . . . FB
- 20 RUSTY CANTWELL . . . . . WB

## Vanderbilt

### DEFENSE

- 83 BOB PEGG . . . . . LE
- 69 SID RANSOM . . . . . LT
- 45 CHIP HEALY . . . . . LLB
- 43 DeWITT THOMPSON . . MG
- 53 DAVE MADDUX . . . . . RLB
- 72 KELLY MEYER . . . . . RT
- 82 JIM THOMAS . . . . . RE
- 35 BOB GOODRIDGE . . . . . M
- 30 CHARLIE ORTH . . . . . LH
- 15 BERNIE KEMPLE . . . . . S
- 34 TROW GILLESPIE . . . . . RH

### COMMODORE SQUAD

- |                  |                    |
|------------------|--------------------|
| 10 Darnell, SAF  | 62 Kiss, LB        |
| 12 May, QB       | 63 Shugart, G      |
| 14 Kerr, QB      | 64 Curtin, DT      |
| 15 Kemple, SAF   | 65 Dawson, OG      |
| 16 Noel, HB      | 67 Hall, OG        |
| 17 Davis, QB     | 68 Prior, OG       |
| 20 Cantwell, HB  | 69 Ransom, LB      |
| 22 Lipperman, HB | 70 Kaelin, OT      |
| 23 Maiden, HB    | 71 Hammersmith, OT |
| 25 Gamble, HB    | 72 Meyer, MG       |
| 30 Orth, HB      | 73 Booker, OT      |
| 32 Bevil, HB     | 74 Cundiff, OT     |
| 33 North, HB     | 75 Rice, DT        |
| 34 Gillespie, HB | 76 Theis, OT       |
| 35 Goodridge, MM | 78 Parker, OT      |
| 41 Semlow, HB    | 80 Boyd, OE        |
| 42 Bruno, FB     | 81 Sanders, OE     |
| 43 Thompson, HB  | 82 J. Thomas, DE   |
| 44 Whiteside, FB | 83 Pegg, DE        |
| 45 Healy, MM     | 84 Ivey, OE        |
| 53 Maddux, LB    | 86 Calhoun, Sp.    |
| 54 Ernst, C      | 87 Skupas, OE      |
| 55 Brown, C      | 88 Ousley, OE      |
| 60 Greene, G     | 89 Klaass, OE      |
| 61 T. Thomas, LB | 90 Maclean, Sp.    |

### DEFENSE

- 87 DOUG VAN METER . . . . . LE
- 65 JIM GRESHAM . . . . . LT
- 42 KERRY CURLING . . . . . MG
- 79 GEORGE KATZENBACH . RT
- 88 JEFF VAN NOTE . . . . . RE
- 44 BILL JANSEN . . . . . LB
- 55 RONNIE ROBERTS . . . . . LB
- 43 ROGER HART . . . . . LB
- 34 AL PHANEUF . . . . . LH
- 25 JERRY DAVIS . . . . . SAF
- 22 TOM FEE . . . . . RH

## Kentucky

### OFFENSE

- 82 DAN SPANISH . . . . . QE
- 76 DWIGHT LITTLE . . . . . QT
- 64 RICH MACHEL . . . . . QG
- 54 CAL WITHROW . . . . . C
- 61 MIKE CASSITY . . . . . SG
- 78 BASIL MULLINS . . . . . ST
- 86 J. D. SMITH . . . . . SE
- 14 TERRY BEADLES . . . . . QB
- 38 BOB WINDSOR . . . . . TB
- 32 LARRY SEIPLE . . . . . WB
- 24 DICKY LYONS . . . . . FB

### WILDCAT SQUAD

- |                   |                    |
|-------------------|--------------------|
| 12 Walz, QB       | 61 Cassity, OG     |
| 14 Beadles, QB    | 62 Childre, OG     |
| 15 Ferguson, LB   | 63 King, DT        |
| 16 Bartkow, QB    | 64 Machel, MG      |
| 17 Prather, QB    | 65 Gresham, DG-DT  |
| 18 Cloyd, DHB     | 66 Nails, OG       |
| 21 Granato, SAF   | 67 Wolf, OG        |
| 22 Fee, DHB       | 68 Zaremba, DT     |
| 23 Goins, TB      | 69 Palmer, DG-DT   |
| 24 Lyons, DHB-FB  | 71 Friebert, OT    |
| 25 Davis, SAF     | 72 Gawler, DT      |
| 30 Chacos, WB     | 73 Joyce, DT       |
| 32 Seiple, TB-WB  | 74 Drinnen, OT     |
| 33 Gray, DHB      | 75 Valentine, OT   |
| 34 Phaneuf, DHB   | 76 Little, OT      |
| 36 Carroll, FB    | 77 Rush, OT        |
| 38 Windsor, WB-TB | 78 Mullins, DT     |
| 40 McGraw, LB     | 79 Katzenbach, DT  |
| 41 Britton, FB    | 80 Greer, OE       |
| 42 Curling, DG    | 81 Anderson, DE-OE |
| 43 Hart, LB       | 82 Spanish, OE     |
| 44 Jansen, LB     | 83 Potter, OE      |
| 45 McClellan, LB  | 84 Sauer, OE       |
| 46 Wood, LB       | 85 Swart, DE       |
| 50 Harris, LB-C   | 86 Smith, DE       |
| 51 Cartwright, C  | 87 Van Meter, DE   |
| 52 Ingram, C-G    | 88 Van Note, DE    |
| 54 Withrow, C     | 89 Zeles, DE-OE    |
| 55 Roberts, LB    | 90 Arnold, KS      |
| 60 Beirne, OG     |                    |

#### — Officials —

Referee ..... Joe DeLaney  
 Umpire ..... Harold Johnson  
 Head Linesman ..... Ed Copeland

Field Judge ..... Paul Sprayberry  
 Back Judge ..... Ned Searcy  
 Electric Clock Operator ..... William Stanton



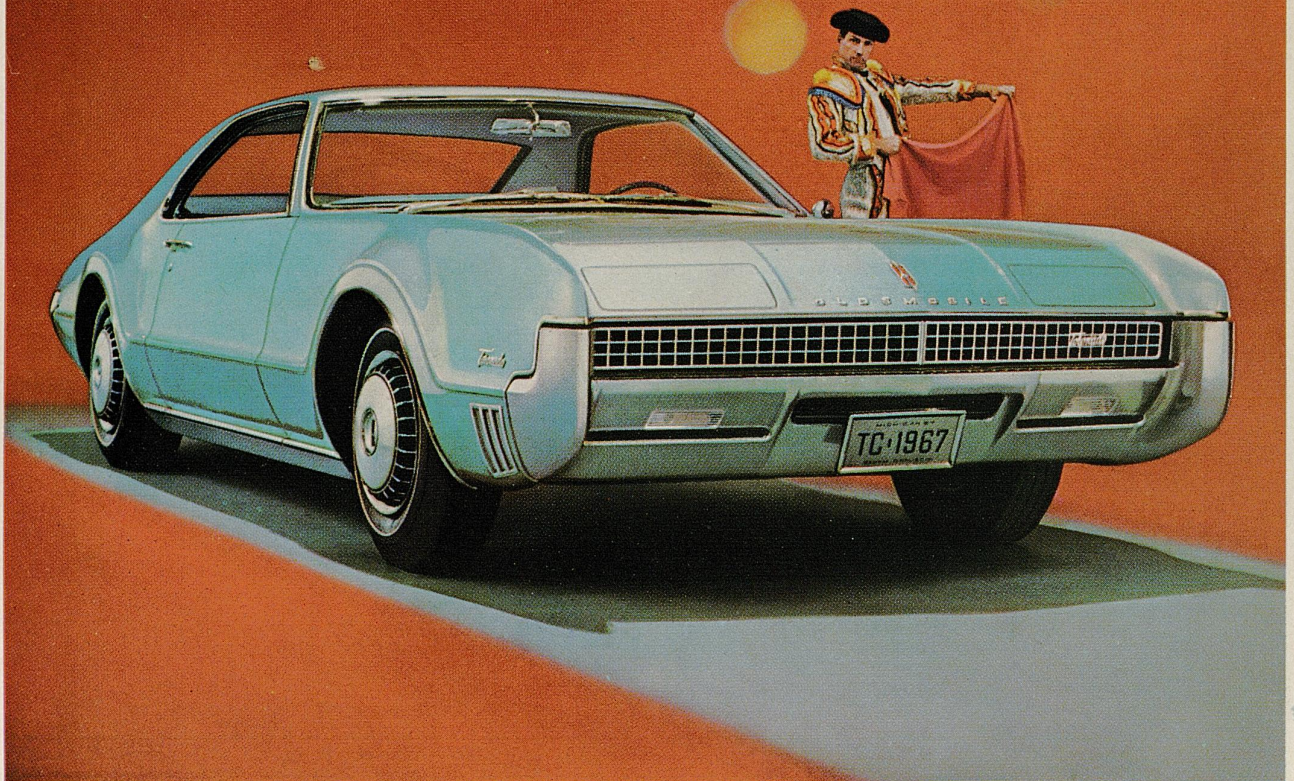
"COCA-COLA" AND "COKE" ARE REGISTERED TRADE-MARKS WHICH IDENTIFY ONLY THE PRODUCT OF THE COCA-COLA COMPANY. PRINTED IN U.S.A.

# YOU NEVER GET TIRED OF





*The Rocket Action Cars are out front again!*



After you've walked off with all the honors,  
what do you do for an encore?

Meet Olds Toronado—'67 edition.

*Awards for this. Awards for that. Awards for just about everything. But rest on its laurels? Not Toronado. Swinging new look outside. Posh new detailing inside. Doors with torsion-bar spring assists that open easier than ever to the flat-floored, room-for-six interior. Even that fabulous front-wheel-drive ride is smoother and quieter for '67. And front disc brakes and radial ply tires are available. Trend-setting Toronado: Proved and applauded by tens of thousands of satisfied owners. Greater than ever the second time around!*

**OBEY  
LAWS  
DRIVE  
SAFELY**

Olds thinks of your safety, too, with the GM-developed energy-absorbing steering column that can compress on severe impact up to 8½ inches; with four-way hazard warning flasher; outside rearview mirror; dual master cylinder brake system, plus many other safety features—all standard for '67.

Engineered for excitement . . . Toronado-style!  
**'67 OLDSMOBILE**





**KENTUCKY SPECIALISTS**

PLACEMENTS: Granato (21), Arnold (90), Spanish (82)  
 PUNTING: Seiple (32), Lyons (24), Beadles (14)

**INFORMATION**

SERIES: UK Won 11, VU Won 23, Ties 4  
 LAST US WIN: 34-0 in '65 (A)  
 NEXT MEETING: November 11, 1967 (A)

**KENTUCKY  
Wildcats**

(SENIORS, Juniors, Sophomores)

**FACTS ABOUT KENTUCKY**

President ..... Dr. John W. Oswald  
 Athletic Director ..... Bernie Shively  
 Head Coach ..... Charlie Bradshaw  
 Publicists ..... Ken Kuhn and Bill Baxter  
 Colors ..... Blue and White  
 Offense ..... Wing T and "I"

<b>QUICK E</b>	<b>QUICK T</b>	<b>QUICK G</b>	<b>CENTER</b>	<b>STRONG G</b>	<b>STRONG T</b>	<b>STRONG E</b>
82 SPANISH	76 Little	64 MACHEL	54 WITHROW	61 Cassidy	78 MULLINS	86 SMITH
81 Anderson	71 Friebert	67 Wolf	51 Cartwright	66 Nails	77 Rush	83 Potter

**OFFENSE**

**OFFENSE**

<b>LEFT END</b>	<b>LEFT TACKLE</b>	<b>LINEBACKER</b>	<b>MIDDLE GUARD</b>	<b>RIGHT TACKLE</b>	<b>RIGHT END</b>
87 Van Meter	65 Gresham	55 Roberts	42 Curling	79 Katzenbach	88 Van Note
85 SWART	63 King	62 Childre	60 Beirne	74 Drinnen	69 Palmer

**DEFENSE**

**DEFENSE**

**VANDERBILT SPECIALISTS**

PLACEMENTS: Klaass (89), T. Thomas (61)  
 PUNTERS: Calhoun (86), Maclean (90), Cantwell (20)

**SERIES INFORMATION**

BIGGEST WIN: UK 34-0 (A) in 1965  
 VU 50-0 (A) in 1897  
 AT LEXINGTON: Vandy leads 8-6-1

**VANDERBILT  
Commodores**

(SENIORS, Juniors, Sophomores)

**FACTS ABOUT VANDERBILT**

Chancellor ..... Dr. Alexander Heard  
 Athletic Director ..... Jack Green  
 and Head Coach ..... Bill Stewart  
 Publicist ..... Black and Gold  
 Colors ..... Black and Gold  
 Offense ..... Wing T

<b>SE</b>	<b>ST</b>	<b>SG</b>	<b>C</b>	<b>PG</b>	<b>PT</b>	<b>PE</b>
80 Boyd	71 HAMMERSMITH	62 KISS	55 Brown	64 Curtin	78 PARKER	87 SKUPAS
81 SANDERS	76 Theis	63 Shugart	54 Ernst	60 Greene	74 Cundiff	84 Ivey

**OFFENSE**

**OFFENSE**

<b>LE</b>	<b>LT</b>	<b>LLB</b>	<b>MG</b>	<b>RLB</b>	<b>RT</b>	<b>RE</b>
83 Pegg	69 Ransom	45 Healy	43 Thompson	53 MADDUX	72 Meyer	82 THOMAS
65 DAWSON	70 Kaelin	53 MADDUX	69 Ransom	67 Hall	75 RICE	65 DAWSON

**DEFENSE**

**DEFENSE**

<b>M</b>	<b>LH</b>	<b>S</b>	<b>RB</b>
35 Goodridge	30 ORTH	15 KEMPLE	34 Gillespie
43 Thompson	23 MAIDEN	10 DARNELL	25 GAMBLE

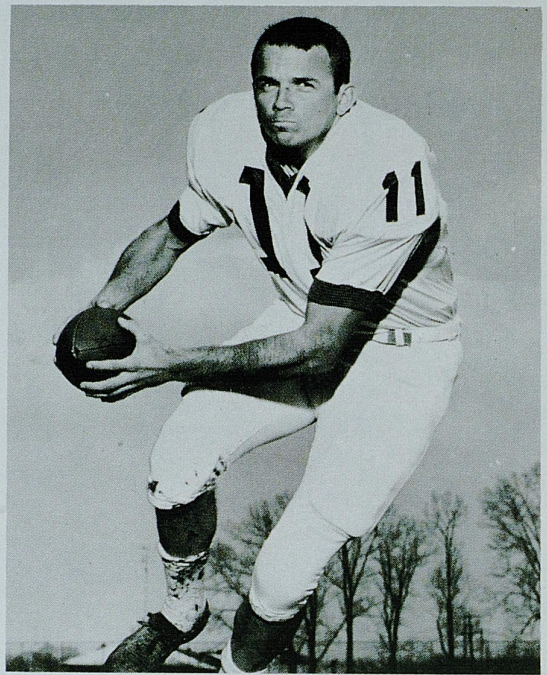




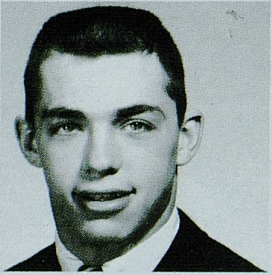
STEVE GRAY



PHIL GREER



ROGER WALZ



BILL JANSEN



RODGER HART

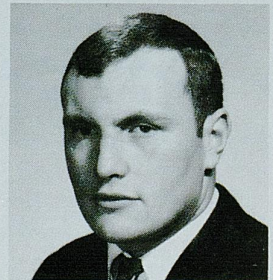


KENTUCKY

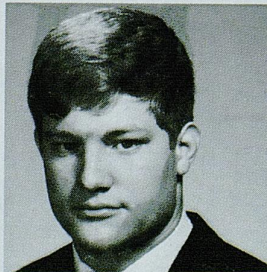
TERRY BEADLES



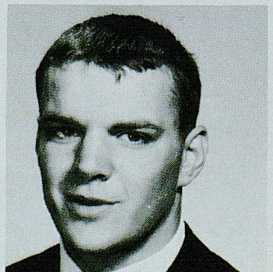
JIM GRESHAM



MARTY JOYCE



JOHN HARRIS



MIKE GRANATO



# WLEX-TV

"Best in SPORTS"

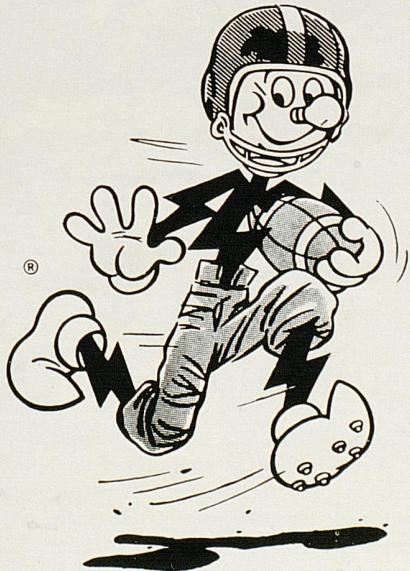


**CY FOLLMER**  
WLEX-TV  
SPORTS DIRECTOR

Presents

- SPORTS EXTRA 6:00 P.M.
- SPORTS FINAL 11:20 P.M.
- ● BOTH in FULL COLOR

- **NFL FOOTBALL 66-67**
- 32 GAMES
- ● ● ● ● Including ● ● ● ●
- NFL Championship Game Jan. 1
- NFL Runner-up Bowl Jan. 8
- NFL PRO - Bowl Jan. 15
- And Many Top NCAA Bowl Games



# LET'S GO!

GO!

GO!

GO!

# ALL ELECTRIC

**KU**

SYMBOL  
of  
SERVICE

You meet the happiest people in an All-Electric home!

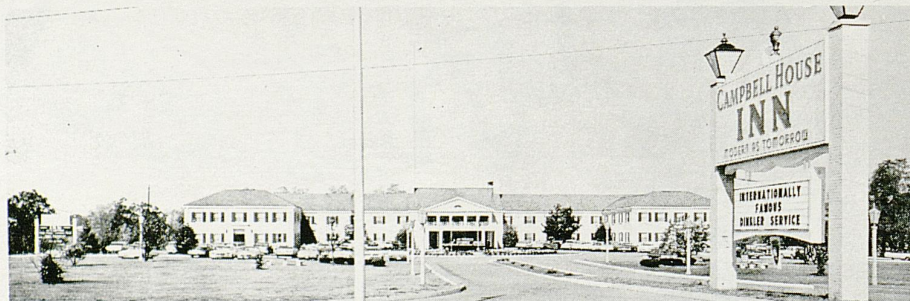
**KENTUCKY UTILITIES COMPANY**



# DeBoor

Laundry      Dry Cleaning  
Rug Cleaning      Storage

★ ★ ★ ★ ★ ★ ★ ★ ★ ★  
KEEP FREEDOM  
IN YOUR FUTURE  
WITH  
U. S. SAVINGS BONDS  
★ ★ ★ ★ ★ ★ ★ ★ ★ ★



## Dinkler Campbell House Inn

Nothing matches the Dinkler Campbell House Inn for fun or food. The superb cuisine of the Cotillion Room (winner of the coveted Holiday Magazine excellence award for several years) will make your stay a memorable experience. Here you will find a happy blending of traditional Kentucky hospitality and every modern convenience; luxurious suites and rooms, beautiful Dining Room, Cocktail Lounge with sparkling entertainment, Exercise and Massage Room, Gift Shop, Dress Shop, Barber Shop and Beauty Salon. Adjacent to Par Three Golf Course and Driving Range. May we have the pleasure of serving you soon?

Harrodsburg Road • Lexington, Kentucky  
Phone 254-8490

Paul Cordet • General Manager



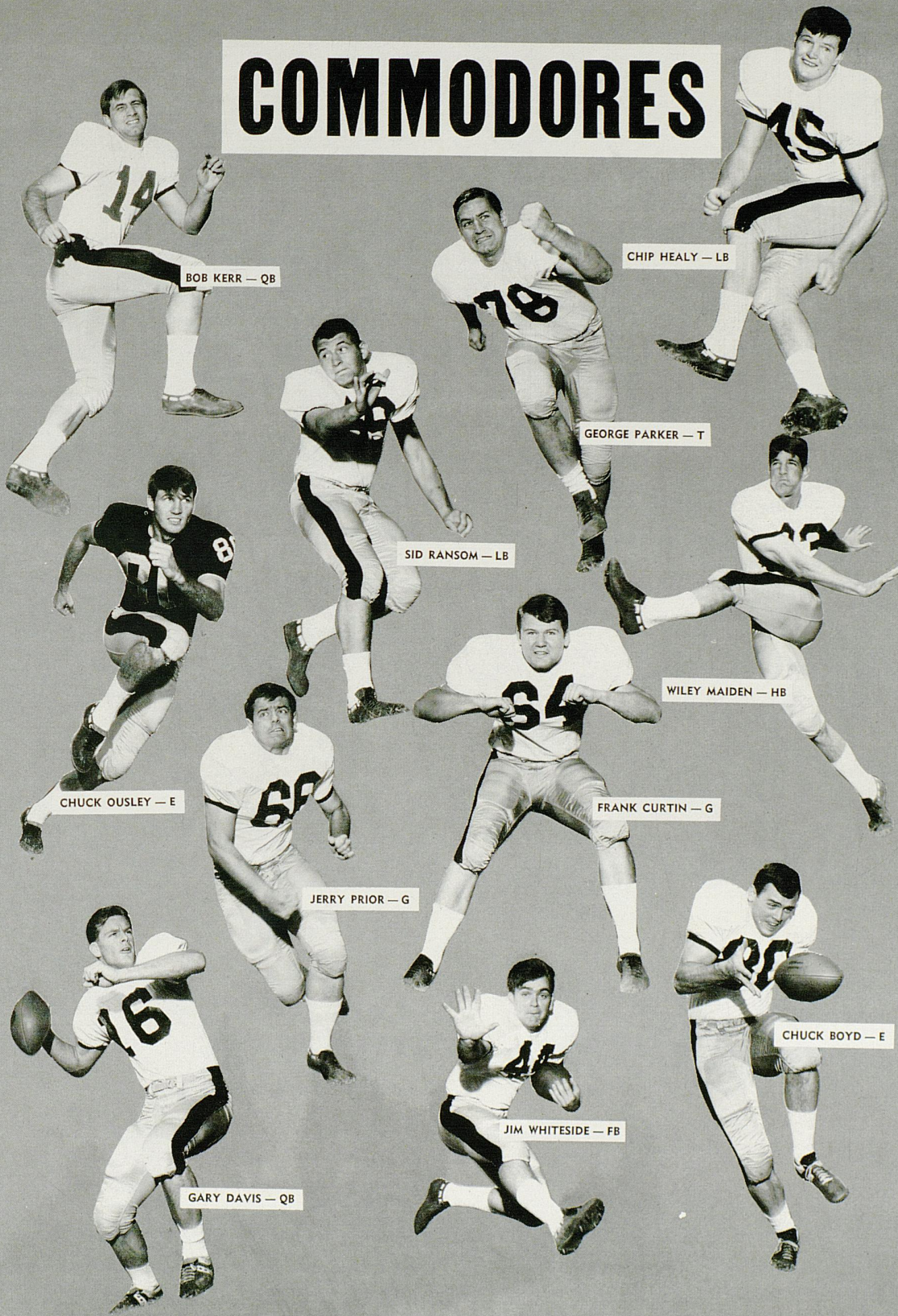
DINKLER HOTEL CORPORATION • Carling Dinkler, Jr., President

A wholly - owned subsidiary of Transcontinental Investing Corporation





# COMMODORES



BOB KERR — QB

CHIP HEALY — LB

GEORGE PARKER — T

SID RANSOM — LB

WILEY MAIDEN — HB

CHUCK OUSLEY — E

FRANK CURTIN — G

JERRY PRIOR — G

CHUCK BOYD — E

GARY DAVIS — QB

JIM WHITESIDE — FB





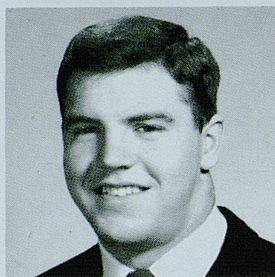
DICK PALMER



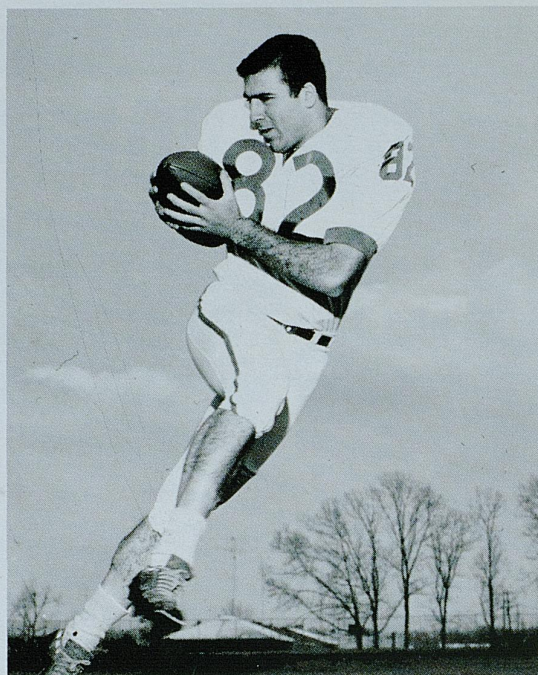
SCOTT VALENTINE



LEONARD RUSH



DEREK POTTER



DAN SPANISH

# KENTUCKY

DON BRITTON



TOMMY SAUER



WESLEY NAILS



JIM PRATHER



JOE DAVID SMITH



New and "USED" Book Center on Campus  
in the  
STUDENT CENTER

## UNIVERSITY BOOK STORE

UK GLASSWARE

UK SWEATSHIRTS

UK PENNANTS

UK JEWELRY

UK SOUVENIRS

UK DECALS

OPEN AFTER DAY GAMES UNTIL 6 P.M.

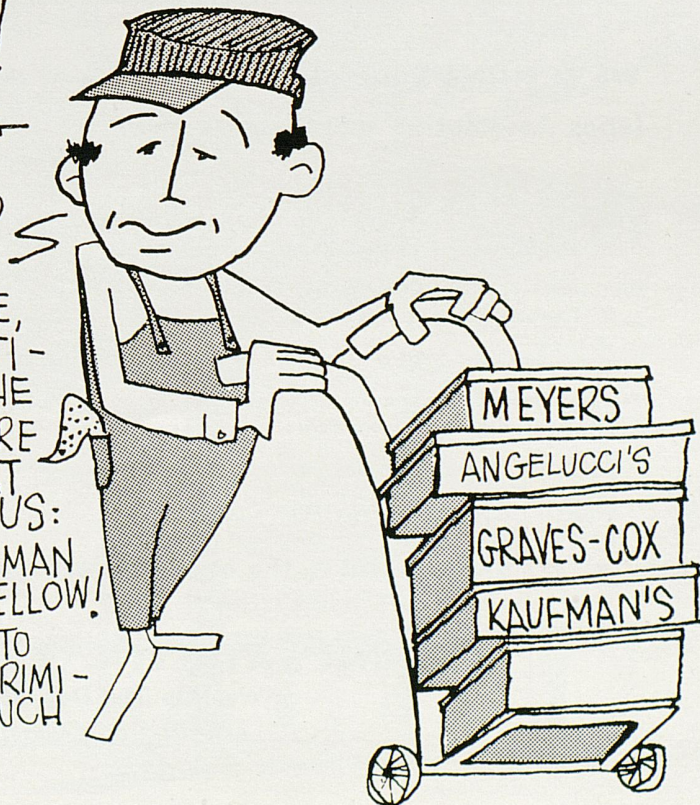
CONGRATULATIONS SIR!

DID YOU KNOW THAT YOU &  
THE MEN YOU SEE AROUND YOU,  
ARE AMONG THE BEST DRESSED  
MEN IN THIS WHOLE U.S.A.?

IT'S A FACT! HERETOFORE,  
THOSE FAST HORSES & BEAUTI-  
FUL WOMEN HAVE STOLEN THE  
SHOW, BUT MAYBE THEY ARE  
THE STRIKING PROOF OF WHAT  
OUR MANUFACTURERS TELL US:

THE BLUE GRASS GENTLEMAN  
IS A MOST DISCRIMINATING FELLOW!

AND WE FEEL HONORED TO  
HAVE DRESSED SO MANY DISCRIMI-  
NATING GENTLEMEN FOR SUCH  
A LONG WHILE.





*Support U. of K. Football*



**BUSINESSMEN'S LIFE INSURANCE COMPANY**

144 SOUTHLAND DRIVE    LEXINGTON, KENTUCKY 40503    PHONE 278-2351

*Be A Wildcat Booster*

**We at HUNT'S are pleased to supply to the University of Kentucky Athletics Association merchandise manufactured by the following firms:**

Adidas—Track Shoes

Bike Web Company—Trainer's Supplies

Brunswick—Football Uniforms and Equipment  
for Football, Baseball, and all Sports

Cramer Chemical Company—Trainer's Supplies

Fair Play Scoreboard Company—Football Score-  
board and Basketball Scoreboard

Hillerich and Bradsby Company—Louisville Slugger  
Bats

Johnson and Johnson—Trainer's Tape

King O'Shea Company—Basketball Uniforms

Powers Mfg. Company—Award Jackets

John T. Riddell, Inc.—Football Helmets and Shoes

A. G. Spalding & Bros.—Football and Basketballs

Spanjian of Pasadena—Football and Baseball  
Uniforms

Sports Equipment Co.—SECO Athletic Supplies

**We are grateful to the above manufacturers who sponsor this ad.**

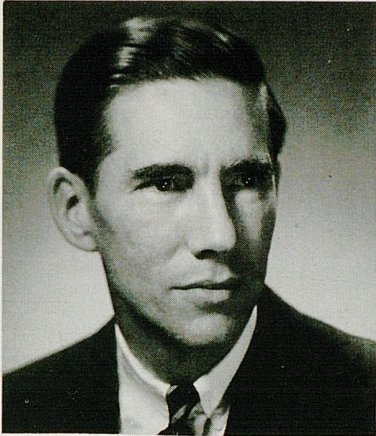
**HUNT'S ATHLETIC GOODS CO., INC.**

**"We Ship The Day You Buy"**

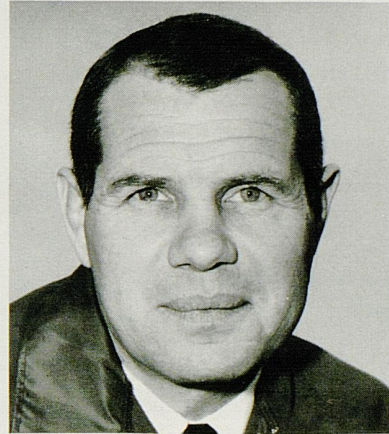
**MAYFIELD, KENTUCKY**



*Vanderbilt*  
*University*

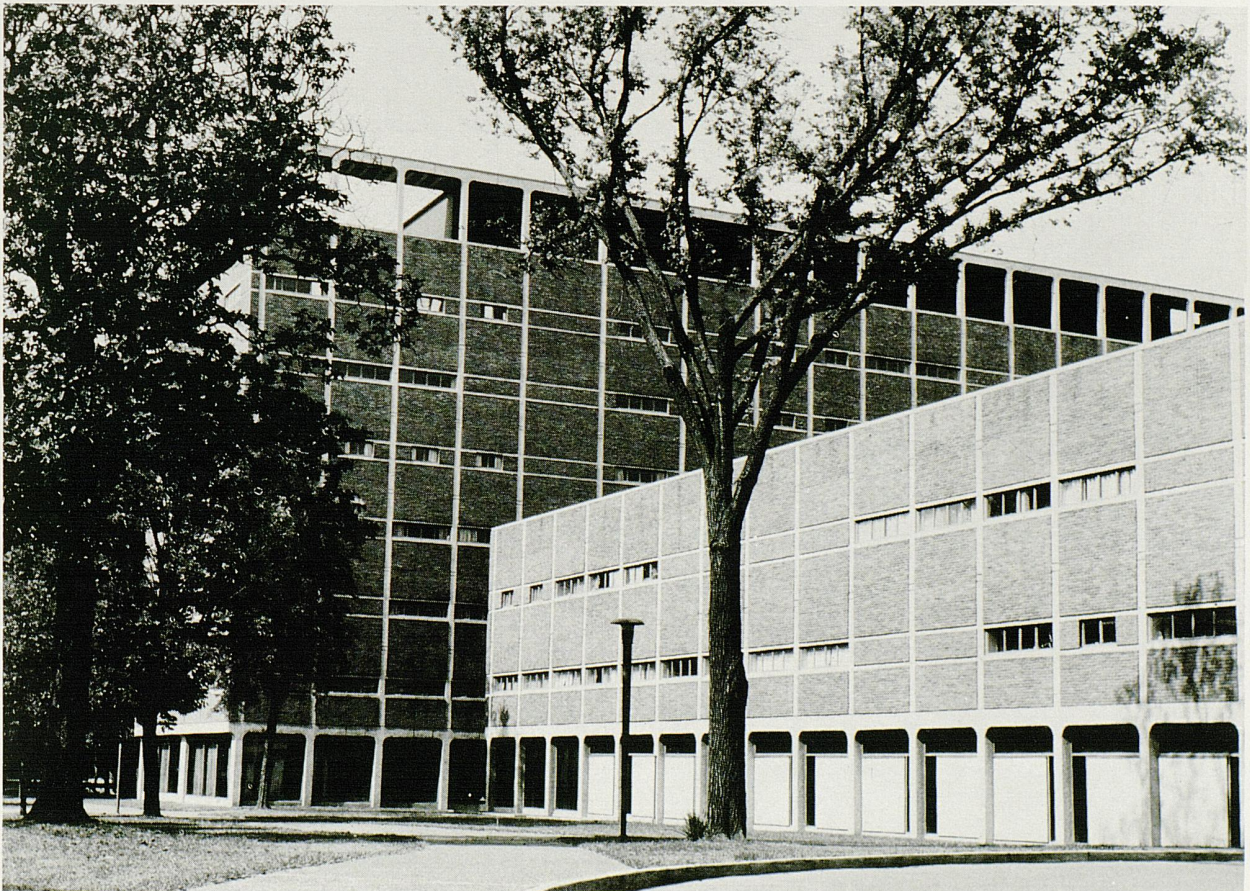


ALEXANDER HEARD  
Chancellor



JACK GREEN  
Head Coach  
Athletic Director

SCIENCE CENTER



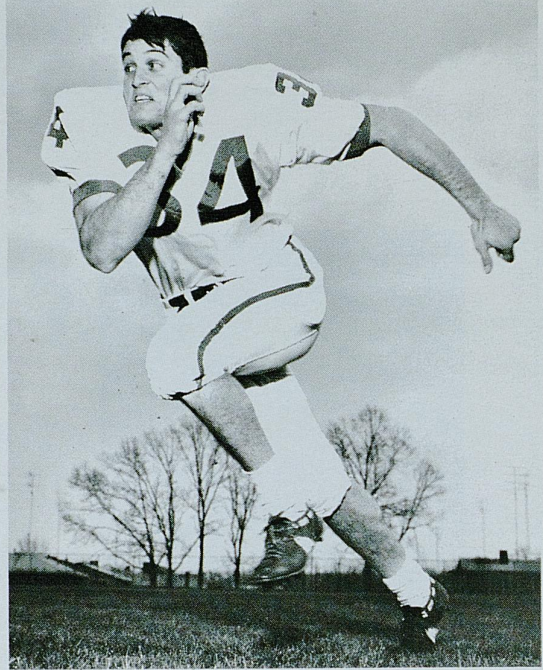




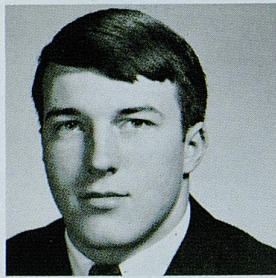
EDDIE INGRAM



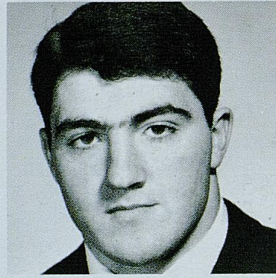
ED ZAREMBA



DICKY LYONS



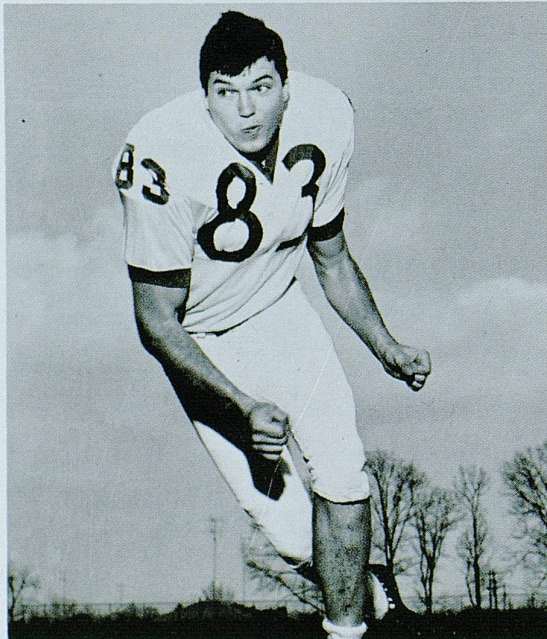
KEN WOOD



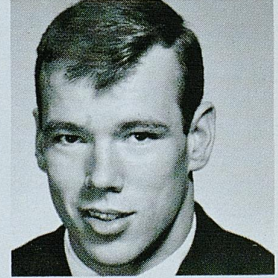
JEFF VAN NOTE

# KENTUCKY

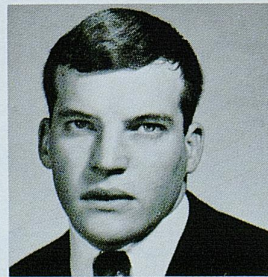
JIM SWART



LOUIS WOLF



JOHN ZELES



DOUG VAN METER





# Springs Motel

2020 South Broadway PHONE 277-5751 Lexington, Kentucky

DANCE TO THE MUSIC OF "THE NEPTUNES"  
Tuesday through Saturday — 8:00 - 1:00

Dine in the Elegant Setting of "THE POMPEI ROOM"  
Cocktail hour — 4:00 - 6:00

## LEXINGTON

Insurance Agency, Inc.

*"Complete Insurance Service"*

Kentucky Central Building

Phone

254-6257



Open  
Mondays  
and  
Fridays  
'Til 9

# Stewart's

Phone or Write  
Sally Stewart  
Personal Shopper  
252-2210



# Safeguarding the Athlete

by CARL S. BLYTH

*Chairman, NCAA Committee on Competitive Safeguards and Medical Aspects of Sports*

**T**HE FULLBACK took the tackle's forearm shiver squarely across the chops and collapsed.

With a startled gasp, the trainer ran out onto the field, fearing the fullback had lost several teeth. But the player jumped to his feet, his grin disclosing that his rubber mouthpiece had cushioned the blow. The trainer turned back, sighing with relief.

The fullback's mouthpiece was intact. So were all his teeth.

That custom-fitted mouthpiece was recommended for use by the NCAA Committee on Competitive Safeguards and Medical Aspects of Sports in 1962. Since then, institutions using the mouthpiece have reported almost no dental injuries.

Perfect health in every athlete is the goal of each coach, athletic administrator and trainer. But all recognize that injuries do occur and it is the responsibility of the medical personnel connected with the team to prevent as many injuries as possible. Preventive measures are also a function of the NCAA Committee on Competitive Safeguards and Medical Aspects of Sports.

The NCAA was one of the first organizations to appoint a professionally-trained group to devote itself entirely to the study of safety and accident prevention in athletics. This Committee is composed of trainers, physicians, physiologists, coaches and athletic administrators devoted to the study of athletic medicine.

It has the responsibility of gathering and classifying all important information in regard to the safety and medical aspects of sports. It keeps all NCAA-member institutions informed of its findings and makes available to all NCAA rules and tournament committees its recommendations for possible incorporation into the official collegiate playing rules of the sport



involved.

A recent recommendation by the Committee resulted in a 1965 football rules change. "The use of the head and face (with a mask) to strike a blow constitutes a personal foul," the Committee suggested. "In addition, the practice of coaches teaching techniques of blocking and tackling using the head and face as the contact point is dangerous and should be curtailed."

The NCAA Football Rules Committee agreed. Rule 9, Section 1, Article 2j now reads: "No player shall deliberately and maliciously use his helmet or head to unnecessarily butt or ram an opponent." It costs the offending team 15 yards and flagrant violators are disqualified.

Recommendations by the Committee from two research studies it conducts, the Annual College Football Injury Survey and the Annual Football Fatality Survey, also have led to changes over the years in football rules as well as modification in playing fields and equipment.

The latest Football Fatality Survey reports that the incidence of direct fatal injuries is less than two participants per 100,000 players. It also discloses that approximately one-third of all football fatalities are not di-

rectly related to football. In general, the indirect fatalities result from heart and circulatory accidents and infections.

An interesting finding in the 1965 Football Fatality Survey was that player equipment was satisfactory and did not contribute to the fatality. Although the Committee believes that those concerned with the health of the athletes should continue the search for improved and safer equipment, it also is appreciative of the manufacturers' and coaches' roles in providing the best equipment for all competing athletes.

The Committee previously found that too many institutions were providing only one physical examination (at the beginning of the freshman year) for the college athlete. The Committee strongly recommended yearly physical and health examinations for all athletes. It also suggested that a physician give written approval before a player can return to practice and competition after injury.

Hot weather has been a problem for many schools at the beginning of fall practice. But a seven-point "hot weather hints" program was recommended by the Committee and has been instrumental in halting heat exhaustion.

The Committee has studied and discussed the practice of crash dieting, particularly in the sport of wrestling. It has severely criticized this unnatural means of losing weight.

A joint commission was founded in 1965 for the purpose of researching, studying and pooling resources in the specialty of athletic medicine. Co-operating organizations are the American College Health Association, National Athletic Trainers Association, National Federation of State High School Athletic Associations and the NCAA. It is anticipated that this joint commission will provide even greater impetus toward the prevention of athletic injuries.



# BECKER

Laundry—Dry Cleaning, Inc.

5 Convenient Locations

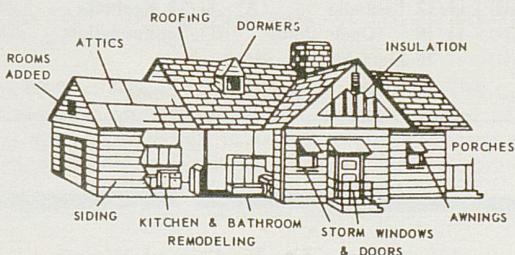
Main Plant — S. Limestone and Euclid Avenue  
 4th Street and N. Broadway    Walton and Aurora Avenue    S. Limestone and Vine    Southland Shopping Center

**NOBODY** can Launder a Shirt like BECKER

Claude McGaughey, Jr., President — U.K. Grad — Class '48

**For All Types of Remodeling  
 Commercial or Residential**

*"Your Best Bet is Cornett"*



**Dial 252-5036**

Recreation Rooms — Garages

Custom Kitchens — Room Additions



**Cornett Construction Co.**

1077 S. Broadway

Lexington, Ky.

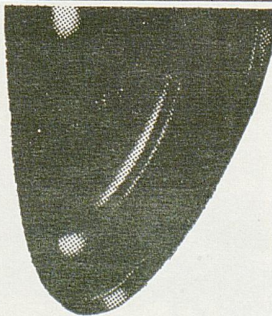
*Borden's*

**ICE CREAM**

Throughout  
 Central Kentucky



576 E. Third St. — Phone 254-2855



**FRENCH  
 SHRINER**

*Outstanding.*  
**COMFORT,  
 QUALITY  
 & STYLE**

SHOES FOR MEN

**BAYNHAM'S**

135 East Main Street

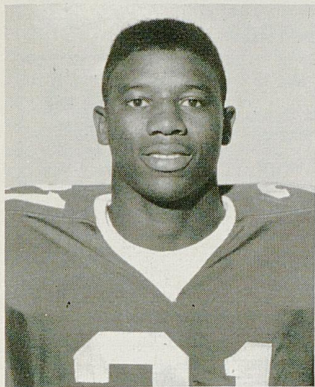




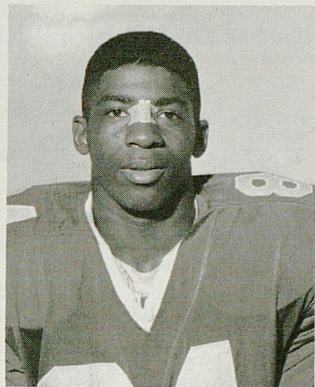




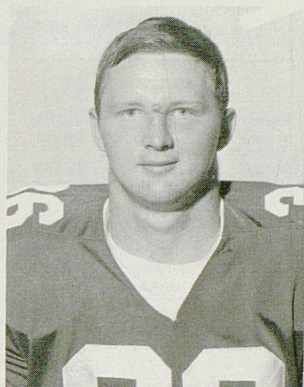
## MEET THE "KITTENS" . . .



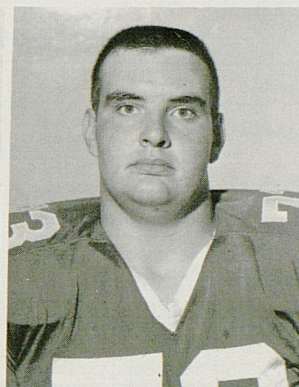
NORTHINGTON



PAGE



PHILLIPS



PURSELL

**NAT NORTHINGTON**—Alternating as the Kittens' tailback, Nat has lived up to the All-State reputation gained at Thomas Jefferson High in Louisville . . . The slender Negro, first of his race to gain athletic scholarship at UK, gained over 2,000 yards and 194 points in final two years as school-boy star . . . Scored 41-yard touchdown in Kitten's rout of Virginia Tech frosh and broke away for 32-yard kickoff return versus Baby Vols.

**GREG PAGE**—Trained for future football greatness by Coach Walt Green at Middlesboro High, Greg performed at end in aiding the Yellow Jackets to a 10-2 record in '65 and state runner-up honors in Class AA . . . The husky Negro won All-State honors and was MVP of conference (SEKC) . . . Also played basketball, track and baseball . . . Sizes up at 6-2½, 192.

**RONNIE PHILLIPS**—Rushed for 2,100 yards in his senior year at Grundy Senior High in Virginia and has shown exceptional promise as a collegiate fullback . . . Set a school record for ground gaining . . . Picked up schoolboy All-America honor, All-State and his team's MVP . . . Brother, Donnie, is following in footsteps at Grundy High.

**DAVE PURSELL**—Cited by coaches for outstanding job at tackle . . . UK's biggest signee, Pursell stacks up at 6-5½ and 265 pounds . . . Calls Morrisville, Pa., home and attended Pennsburg High in Fairless Hills . . . Big 33 game participant, All-State and honorable mention All-America

. . . Looked particularly good against Tennessee's Baby Vols as he recovered two fumbles.

**KEITH RAYNOR**—One of the back bones of the Kitten offense, fullback Raynor averaged about three yards per carry over the ground in UK's early games . . . Attended high school at Garner (N. C.) Senior and later prepped at Fredericksburg Military Academy . . . Calls Raleigh, N. C., home . . . Won All-State honors and was MVP and team captain at Garner High.

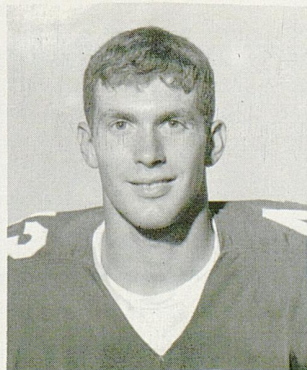
**JAY REYNOLDS**—Set school record at Boyle County High for touchdowns as he scored 114 points last year and another for yardage in the course of picking up 1,028 in 10 games . . . Averaged 7.1 per carry as a tailback and fullback . . . Third team All-State . . . Also saw service at end and safety and linebacker . . . Now tailback for Kittens.

**DON RICKETTS**—A quarterback and place kicking specialist, Ricketts got the Kittens off on the right foot by connecting on a 34-yard field goal early in the game against Va. Tech's Frosh . . . In high school at Louisville's duPont Manual, Don registered 58 points by kicking and hit a school record, 40-yard field goal.

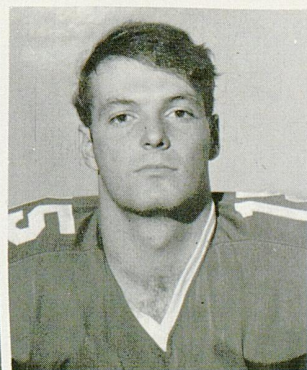
**FRANK SALOTTI**—This young strongman tackle from Monessen, Pa., makes a hobby of increasing his strength by weight lifting . . . Sizes up at 6-2 and 210 pounds and is able to perform creditably on either offense or defense . . . Frank has ambitions to go on to medical school following undergraduate study . . . Favorite subject is Biology.



RAYNOR



REYNOLDS



RICKETTS



SALOTTI



## 1966—SOUTHEASTERN CONFERENCE FOOTBALL SCHEDULE—1966

WEEK-END	SEPT. 17	SEPT. 24	OCT. 1	OCT. 8	OCT. 15	OCT. 22	OCT. 29	NOV. 5	NOV. 12	NOV. 19	NOV. 26
ALABAMA		La. Tech Birmingham*	Ole Miss Jackson*	Clemson Tuscaloosa	Tennessee Knoxville	Vanderbilt Birmingham	Miss. State Tuscaloosa	L.S.U. Birmingham-T	So. Carolina Tuscaloosa		Sou. Miss. Mobile
AUBURN	Chattanooga Auburn	Tennessee Birmingham	Kentucky Lexington*	Wake Forest Auburn	Ga. Tech Birmingham	T.C.U. Auburn	Florida Gainesville	Miss. State Jackson	Georgia Auburn		Auburn-T Dec. 3 - B'ham Alabama-T
FLORIDA	Northwestern Gainesville	Miss. State Gainesville	Vanderbilt Nashville	Fla. State Tallahassee	N. C. State Raleigh	L.S.U. Baton Rouge*	Auburn Gainesville	Georgia Jacksonville	Tulane Gainesville		Miami Gainesville
GEORGIA	Miss. State Jackson*	V.M.I. Roanoke*	So. Carolina Columbia*	Ole Miss Athens	Miami Miami#	Kentucky Athens	No. Carolina Athens	Florida Jacksonville	Auburn Auburn		Ga. Tech Athens
KENTUCKY	No. Carolina Lexington*	Ole Miss Jackson*	Auburn Lexington*	Va. Tech Lexington*	L.S.U. Lexington*	Georgia Athens	W. Virginia Morgantown	Vanderbilt Lexington	Houston Lexington	Tennessee Knoxville-T	
L.S.U.	So. Carolina Baton Rouge*	Rice Houston*	Miami Baton Rouge*	Texas A&M Baton Rouge*	Kentucky Lexington*	Florida Baton Rouge*	Ole Miss Baton Rouge*	Alabama Birmingham-T	Miss. State Baton Rouge-T	Tulane New Orleans*	
MISSISSIPPI	Memphis St. Memphis*	Kentucky Jackson*	Alabama Jackson*	Georgia Athens	Sou. Miss. Oxford	Houston Memphis	L.S.U. Baton Rouge*		Tennessee Knoxville	Vanderbilt Jackson	Miss. State Oxford
MISS. STATE	Georgia Jackson*	Florida Gainesville	Richmond Starkville	Sou. Miss. Starkville	Houston Houston*	Fla. State Tallahassee*	Alabama Tuscaloosa	Auburn Jackson	L.S.U. Baton Rouge - T		Ole Miss Oxford
TENNESSEE		Auburn Birmingham	Rice Knoxville	Ga. Tech Atlanta-T	Alabama Knoxville	S. Carolina Knoxville	Army Memphis	Chattanooga Knoxville	Ole Miss Knoxville	Kentucky Knoxville-T	Vanderbilt Nashville
VANDERBILT	The Citadel Nashville*	Ga. Tech Atlanta	Florida Nashville*		Va. Tech Richmond	Alabama Birmingham	Tulane Nashville	Kentucky Lexington	Navy Nashville	Ole Miss Jackson	Tennessee Nashville

\*—Night #—Friday Night

T—Television

# Dixie Bell Dairy Company

**"The Largest and Only Locally  
Owned Dairy Serving  
Central Kentucky"**



**315 North Limestone Street  
LEXINGTON, KY.**

## Places of Interest To Visit In Lexington:

Henry Clay Home                      Big Red Mile  
Hunt Morgan House                  Horse Farms  
Keeneland Race Course

And

# WENNEKERS

153-155 East Main Street

*Where Sports Celebrities Make Their  
Headquarters*

**Save Money on Nationally Advertised Shoes**

**Prices You Can Afford**



R

*"No Order Too Small"*

R

# Sageser Drugs

R

*"Ask Your Doctor"*

R

## CARRY OUT ORDER SERVICE

Phone 277-5211 — We'll have your  
order in a jiffy — Piping hot.



# Italian

## Spaghetti

## Pizza

## Steaks

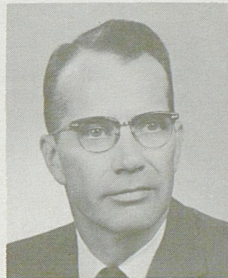
## Ruben Sandwiches

## "DOODLES"

1915 South Lime

Phone 277-5211

Restaurant-Cocktail Lounge



MILLER WELCH

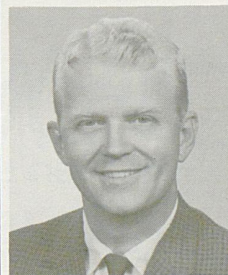


CHARLES LEAR

## CARPENTER-WARREN

INSURANCE AGENCY  
Since 1927

137 N. Upper St. PHONE 252-4155 Lexington, Ky.



DONALD ROSE

### ALL FORMS OF INSURANCE



## LEXINGTON PHOTO ENGRAVING CO.

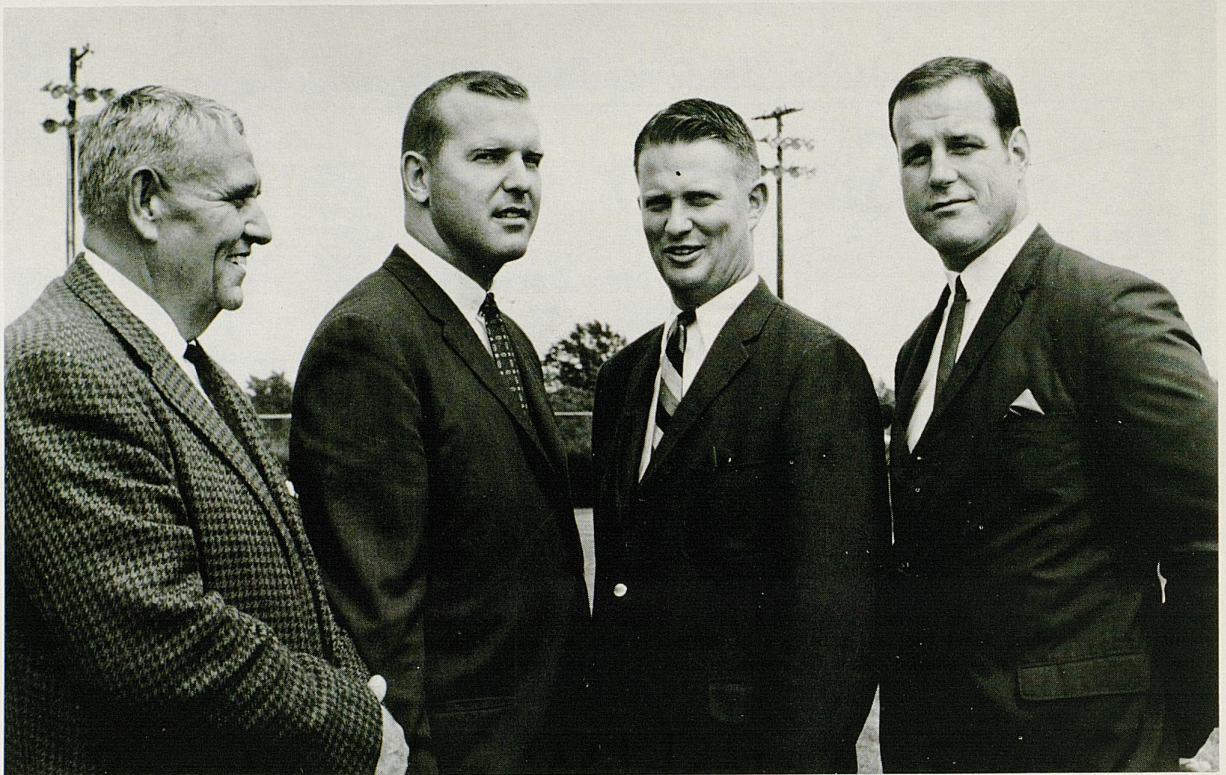
223 W. Short  
Tel. 255-5015

If your **GOAL** is  
**"Fast Production — Fine Reproduction"**  
for your printing needs,  
**RUSH** to left **GOAL** for letterpress plates,  
or  
**RUSH** to right **GOAL** for offset plates.  
Let us **TACKLE** your plate-making to **END**  
your problems. **PASS** them to our **CENTER**  
and you will **GUARD** against a **KICK** in the  
final **RUN**.

## LEXINGTON PHOTO LITH INC.

223 W. Short  
Tel. 255-5015





Heading up the organization of University of Kentucky lettermen known as the K-Men's Association are the former sports heroes shown above. Well-remembered for their contribution on the athletic battlefield are (from the left) Frank Seale, president; Dickie Mueller, vice-president; Jim Host, editor of the newsletter; and J. T. Frankenberger, secretary. Missing when the picture was made was treasurer Dick Rushing.

## Boosting the Wildcats to Success

— K-Men's Association —

Well-known during their undergraduate days at the University for their heroic exploits as members of major athletic teams, the alumni lettermen are continuing their contribution in a less-heralded way and it is particularly fitting that this day (K-Day) is dedicated in their honor.

The K-Men's Association, as the group is known, has to be recognized as one of the most active organizations supporting the athletic program of their Alma Mater on a year-round basis.

Surprising as it may seem to people inclined to classify athletes as an interest group dissociated with the academic side of the University, the "K-Men" actually direct their major efforts in the direction of promoting scholarship. With the aid of the Athletic Association, the group sponsors freshman games in both football

and basketball each year for the benefit of an academic scholarship program that currently is financing the education of four young Kentuckians.

In addition, the K-Men's Association annually honors a senior football Wildcat for maintaining the highest scholastic average for four years. The award is given in memory of alumnus Sam Huey, who originated the honor several years ago.

President Frank Seale, former grid standout and main prime mover in organizing the K-Men's Association, also gives an award in both football and basketball to the varsity senior deemed most outstanding—with scholarship given high consideration.





# HOMECOMING '66

November 8-12

You're invited to . . .

**TUESDAY and WEDNESDAY:**  
Vote for the Homecoming Queen and her court.

**WEDNESDAY:** Memorial Coliseum, Homecoming Concert 8:30 p.m. U.S. Army Band, sponsored by, Homecoming Committee and U.S. Army ROTC.

**THURSDAY:** Torchlight Parade, Pep Rally, and Bonfire, 6:30. Announcement of the Queen Finalists . . . Haggin Hall area.



**FRIDAY:** Jam Session in the Euclid-Rose parking lot, 8-10:30.

**SATURDAY:** Homecoming Football Game: Kentucky Wildcats vs. Houston Cougars, 2:00.

Homecoming Queen and her Court crowned at half-time.

House Display winners announced at half-time.

Homecoming Dance with Soul, Inc., in the S.C. Ballroom and the Town Criers in the S.C. Grill.



# BALL HOMES INC.

*Homes of Distinction  
At a Moderate Price*

254-7777

1316 Versailles Road, Lexington



- 28 Different Varieties of Pancakes & Waffles
- Businessman's Luncheon Mon. thru Friday
- Steaks, Chops, Chicken, Seafood Also Available
- Dine In An Early American Atmosphere
- Special Family Nights & Childrens Portions
- Informal, Friendly Service
- Private Dining Room For Parties Clubs, Banquets, Etc.

BILL ELLIS — Manager

DIAL — 254-7835

Located On U.S. 27 At S. Lime and Rose Sts.  
Across From U. of Ky. Medical Center

*"Stop in Whenever Your Appetite  
Craves a Treat"*

## SOUTHLAND SPORT SHOP

Distributors of

*Riddell, Rawlings, Wilson, and Spalding Sporting Goods*

*Adidas Track Shoes Speedo Cramer Products*

**Plenty of Free Parking Space**

Gene Stokley — In The Southland Shopping Center — Dick Wallace

P.O. BOX 8251

PHONE 277-3977

## Second National Bank & Trust Co.

123 Cheapside, Lexington, Ky.

BRANCH BANK LOCATIONS:

2225 Nicholasville Road, 286 New Circle Road N.W., 1718 Alexandria Drive

**REMEMBER: *Safety Is Our Inherent Way,  
Saving Is Your Touchdown Play.***



# UNIVERSITY OF KENTUCKY

## “WILDCAT”

FRED M. DART ..... *Director*

JOHN CARR .. *Assistant Director*

BRIAN GORRELL .... *Drum Major*

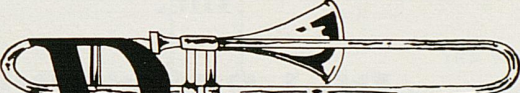
JOHN EDMONSON .... *Arranger*

JOHN TATGENHORST *Arranger*

JERRY GRADY ..... *Arranger*

GLENN TAYLOR ..... *Artist*

  
**MARCHING**

  
**BAND**



### *Theme of Show*

### AMERICA THE BEAUTIFUL

<i>Formations</i>	<i>Music</i>
BLOCK BAND DANCE .....	“St. Louis Blues”
D-I-X-I-E .....	“On! On! Dixie Style”
MAP OF U.S.A. ....	“America the Beautiful”



**HOWARD JOHNSON'S**  
**Motor Lodge**



TWO LOCATIONS

Nicholasville Road, U.S. 27, South  
Phone 277-1191, Lexington, Kentucky

and

North Broadway, U.S. 27, North  
Phone 299-1202, Lexington, Kentucky

*LANDMARK FOR SLEEPY AMERICANS*

# Lexington Yellow Cab Co.

Inc.

**ALL  
RADIO CABS**

**Dial 252-2230**

**ALL  
RADIO CABS**

ROY ALEXANDER  
Rifle



BUSTER BROWN  
FB Equip. Mgr.



C. W. BRUNER  
Fields Supt.



HARVEY HODGES  
Ticket Mgr.



BOB JOHNSON  
Track



KEN KUHN  
Information Dir.



## WILDCAT HEAD COACHES AND ATHLETICS STAFF



AL MORGAN  
Supervisor  
Student Admissions



WYNN PAUL  
Swimming  
Water Polo



ADOLPH RUPP  
Basketball



JOE SHANNON  
Baseball



DICK VIMONT  
Tennis



HUMSEY YESSIN  
Golf



*Flying Somewhere?*

Contact . . .

*All-American Tours Inc.*

(Lexington's largest travel agency—established 1932)

**Phoenix Hotel — Telephone 255-6780**

. . . Where you get information on ALL airlines by one call or visit. There is no service charge.

—— ALSO ——

We have an attractive program of tours and cruises to all parts of the world.



145 N. UPPER ST.  
1220 HARRODSBURG RD.

*You're Always Welcome At . . .*



WALGREEN AGENCY DRUG STORES

IN LEXINGTON

- ★ 69 Eastland Shopping Center
- ★ Northland Shopping Center
- ★ 878 East High Street
- ★ 404 Southland Drive
- ★ 1743 Alexandria Drive

SERVING THE BEST  
IN  
DRUG STORE NEEDS  
SINCE 1921

16 DRUG STORES IN KENTUCKY

*"Last Year . . . .*

*Was a Very Good Year"  
But This Year Will Be  
Better!*

**GO CATS 1966**

And Shop

**WALLACE'S**

A few steps more mean  
more for your books and  
more for your money

S. Lime at Euclid      Ph. 252-8753



## *U.K. Choristers Go Big Time In New York*

The University Choristers and the Lexington Singers will go "big time" next January. The two groups will join forces with the Cincinnati Symphony Orchestra, under the direction of Max Rudolf, director of the Symphony, to present a concert in New York City's Carnegie Hall, January 25 and 26.

Their appearance is an outgrowth of the concerts presented this past year by the two choral groups with the Symphony in Lexington and Cincinnati. "The Manzoni Requiem" by Verdi, which was the work performed, received wide acclaim. Quoting the critic Henry Humphreys, Cincinnati Enquirer music critic, "If Cincinnatians have the idea that our Lexington-area friends concentrate on raising fine horses and distilling heavenly bourbon, then they are behind time. Kentucky is currently 'jumping' with musical talent and these choristers readily proved my contention;" "specific praise must, of course, be accorded Aimo Kiviniemi and Phyllis

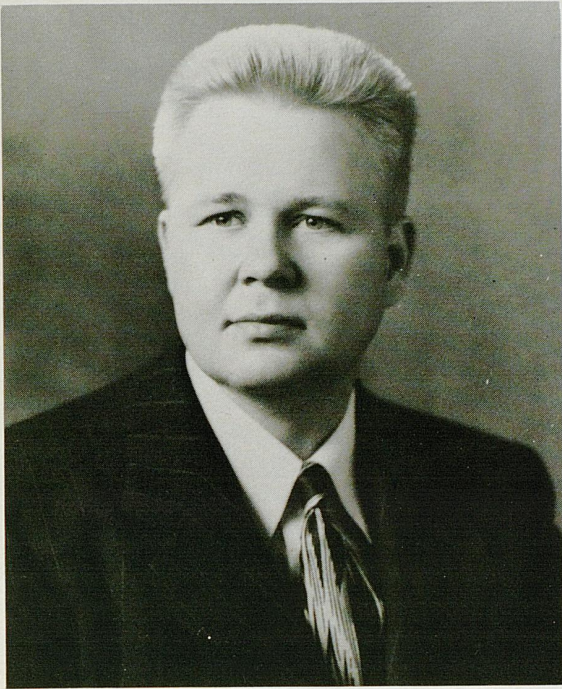
Jenness, the directors of these two excellent choral groups."

The major work to be performed at Carnegie Hall next January will be the "Requiem" Op. 39 of Wilfred Josephs, a young British composer. The work was the winner of the \$5,000 First Prize in the International Composition Competition of La-Scala and the City of Milan, Italy, in 1963, and has had wide acclaim for performances in both Europe and England. The Orchestra, Choristers, and the Singers have been approved to give the American premiere of the "Requiem" which will take place in Cincinnati on January 13 and 14. This concert will then be repeated in New York in Carnegie Hall. It is hoped that the concert will also be given in Lexington.

Director of the Choristers is Aimo Kiviniemi, vice chairman of the Department of Music, and director of the Lexington Singers is Miss Phyllis Jenness, associate professor of applied music.







*Aimo Kiviniemi*

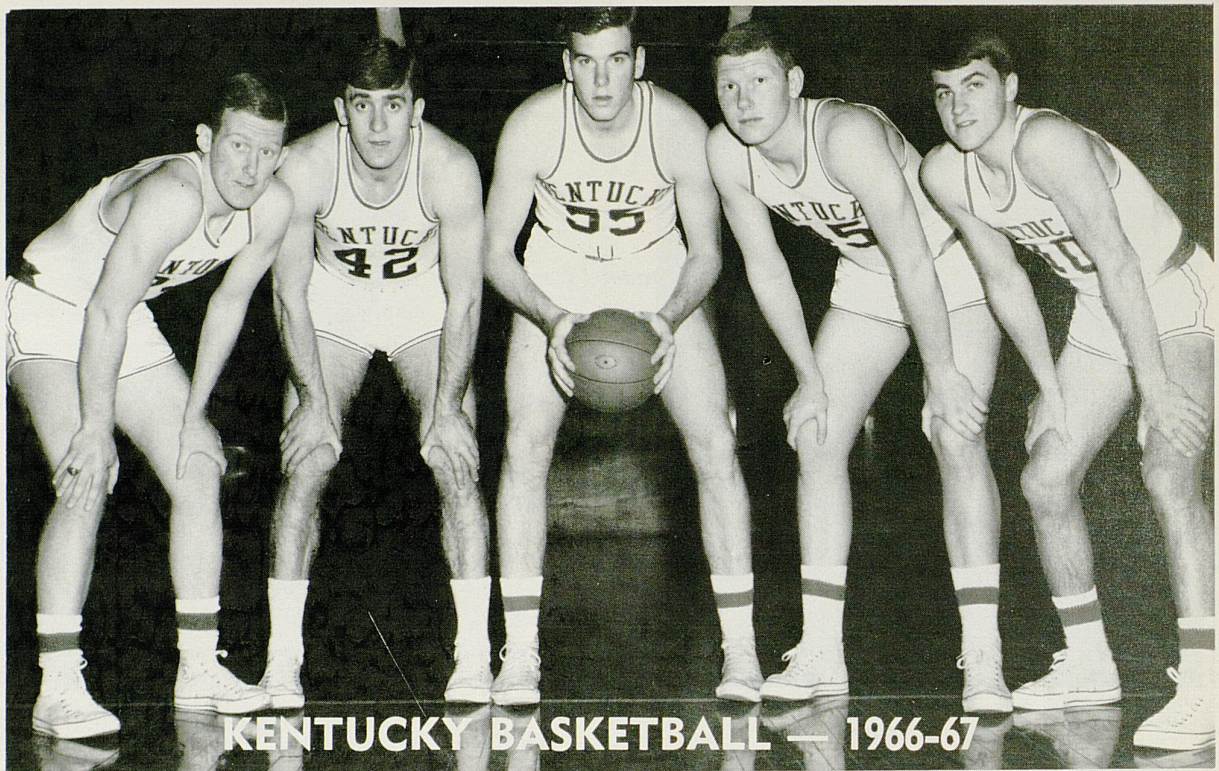


*Miss Phyllis Jenness*



*University Choristers, Lexington Singers, Cincinnati Symphony Orchestra, conducted by Max Rudolf.*





**UNIVERSITY OF KENTUCKY  
BASKETBALL SCHEDULE — 1966-67**

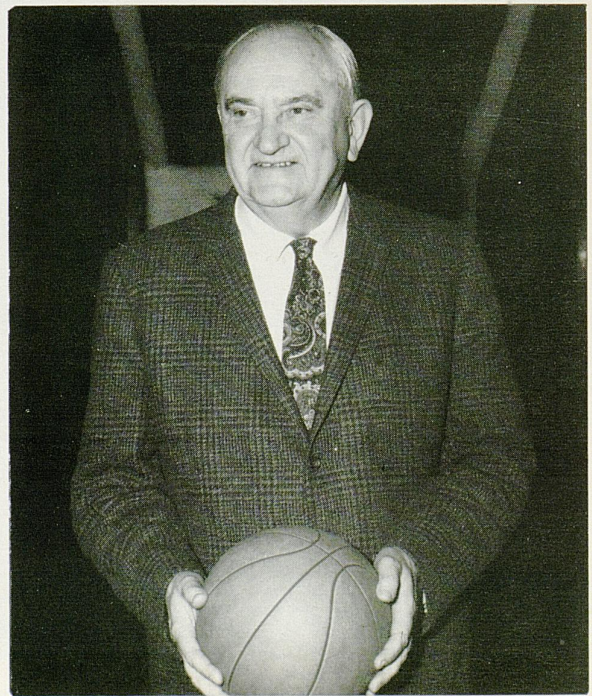
**1966**

Dec. 3 (Sat.)	Virginia .....	Lexington
Dec. 5 (Mon.)	Illinois .....	Lexington
Dec. 10 (Sat.)	Northwestern .....	Evanston
Dec. 13 (Tue.)	North Carolina .....	Lexington
Dec. 17 (Sat.)	Florida .....	Lexington
Dec. 22 (Thurs.)	U.K.I.T. ....	Lexington
Dec. 23 (Fri.)	(Penn State, Kansas State, Oregon State, Kentucky)	
Dec. 28 (Wed.)	Cornell .....	Lexington
Dec. 31 (Sat.)	Notre Dame .....	Louisville

**1967**

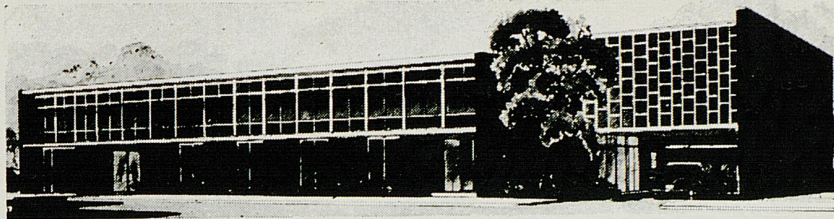
Jan. 5 (Thurs.)	Vanderbilt .....	Lexington
Jan. 14 (Sat.)	Florida .....	Gainesville
Jan. 16 (Mon.)	Georgia .....	Athens
Jan. 21 (Sat.)	Auburn .....	Lexington
Jan. 23 (Mon.)	Tennessee .....	Lexington
Jan. 28 (Sat.)	Louisiana State .....	Lexington
Jan. 30 (Mon.)	Mississippi .....	Lexington
Feb. 4 (Sat.)	Louisiana State .....	Baton Rouge
Feb. 6 (Mon.)	Mississippi .....	Oxford
Feb. 11 (Sat.)	Mississippi State .....	Lexington
Feb. 13 (Mon.)	Tennessee .....	Knoxville
Feb. 18 (Sat.)	Mississippi State .....	Starkville
Feb. 20 (Mon.)	Georgia .....	Lexington
Feb. 25 (Sat.)	Alabama .....	Tuscaloosa
Feb. 27 (Mon.)	Auburn .....	Auburn
Mar. 4 (Sat.)	Vanderbilt .....	Nashville
Mar. 6 (Mon.)	Alabama .....	Lexington

The group pictured above seems the most likely choice as a starting combo for 1966-67. From the left are Bob Tallent, All-America Pat Riley, SEC Soph of the Year Thad Jaracz, 6-8 Cliff Berger and All-America Louie Dampier. Baron Adolph Rupp (below) starts his 37th season at UK as the nation's winningest cage mentor.





## The Downtowner Motor Hotel



LEXINGTON'S FINEST — 155 ROOMS — RESTAURANT — COCKTAIL LOUNGE — CONFERENCE ROOMS  
PARK AT YOUR FRONT DOOR — TV — HI-FI — RADIO — PHONES — SWIMMING POOL  
347 EAST MAIN — JUST EAST OF ROSE

Two Big, Modern Department Stores To Shop In

## BEN SNYDER

DOWNTOWN • EASTLAND SHOPPING CENTER

*Open a Ben Snyder Charge Account for Fast, Easy Shopping*

*"IRRESISTIBLE" Your Home in Modern, Provincial*

*or Early American, by . . .*



**ROBERTS**  
*Furniture Company*

Established  
1893

• Open Monday Night  
to 9 . . . for Your  
Shopping Pleasure!

425 W. MAIN • FREE PARKING AT SIDE DOOR

## MAGNA-GRAPHIC

INC.

MANUFACTURERS OF FINE PRINTING PLATES

*Offset — Photo-Engravings — Matrices*

*Four Color Process Separations*

430 WEST SHORT ST.

LEXINGTON, KY.







Why wait for her to pout?  
**VOLUNTEER...**to take her out  
for dinner at **Jerry's** Restaurant

Listen to U of K Warm-Up Time with Cawood Ledford  
ON WHAS 840 RADIO  
Brought To You By Jerry's

