

# THE KENTUCKY KERNEL

VOLUME XII

LEXINGTON, KENTUCKY, FRIDAY, APRIL 27, 1951

NUMBER 26

Water Show . . . . . Monday, Tuesday  
Best Dressed Contest . . . . . Tuesday Night  
SGA Elections . . . . . Next Friday



## UK's First Water Show To Have Cast Of 50

The UK Coliseum pool will be the scene of the first water show presented on campus under the auspices of the UK Physical Education Department. Tickets for the show which will be held April 30 and May 1 may be purchased for 50 cents from members of the cast at the Men's or Women's Physical Education Department, or at the Coliseum pool the night of the show.

### UK To Make Time Switch

The University will change to Central Daylight Saving Time on Sunday, April 29, it was announced by the University.

### Music Festival Is In Progress

The plans and vocal sections of the 27th annual State High School Music Festival are being held this week at UK. Beginn on Thursday they will run through tomorrow.

### Our Apology, Helen

Helen Smith, senior in the College of Arts and Sciences, was elected to Phi Beta Kappa, senior national scholastic honor. Her name was omitted unintentionally from last week's Kernel.

### Louisa Wilson Represents UK

Miss Louisa Wilson, College of Education senior, has been named UK's representative to the 1951 Kentucky Mountain Laurel Festival to be held at Pineridge.

### Degree Applications Must Be In May 4

Applications for degrees must be filed before Friday, May 4 by all seniors and graduate students expecting to complete their requirements for graduation in June.

### May Day Queen

### This Is Day Of Election

An all-campus election to select the Queen and her court for the busy May Day will be held today from 9 a.m. to 4 p.m. in the ticket booth of the SUB.

### YMCA Marks Centennial On Continent

Mr. Frank T. Dillon, Executive Secretary of the Louisville YMCA will be the principal speaker at the YMCA's Annual Installation Dinner, which is to be held in the Football room of the Student Union Building at 5:30 p.m. Tuesday.

### Ivey To Give Recital Here

Donald Ivey, baritone, College of Arts and Sciences, will give his recital at 8:15 p.m. Wednesday in the Laboratory Theatre of the Fine Arts building.

### SGA Actions And Policies Explained By Ballantine

By Dorman Cordell  
With the election of Assembly members of the Student Government Association approaching, many students are curious as to just what the SGA is, and what it does.

### Sigma Chi's 'Best Dressed' Contest To Be Held Tuesday In Memorial Hall

Collegiate Fashions Will Be Keypote  
Collegiate fashion and the "new look" in styles for men and women "Gambler, Don't Lose Your Place," the annual Sigma Chi fraternity "Best Dressed" contest scheduled for 7:30 p.m. Tuesday in Memorial Hall.

### 28 UK Students To Try For Titles

Kappa Alpha Theta; Jane LaFollette, Chi Omega; Joyce Harrison, Alpha Delta Pi; Mary Jayne Finson, Alpha Xi Delta; Sara Davidson, Zeta Tau Alpha; Phi Sigma; Beta Beta Beta; Gamma Delta; Judy Sonnabend, Tau Alpha Pi.

### Newly Formed Group Includes Greeks, Others

### Cotton And Smith Are Candidates For President's Office

Campus politics will take the limelight on campus next week with the Student Government Association elections scheduled for Friday, May 4. At the present, two parties have declared their candidates for the day-long election.

### United Students Platform

Henry Neel, chairman of the United Students Party, has announced the party platform prepared by members of the party.

### Constitutionalist Platform

Fred Dorr, chairman of the Constitutionalist Party, has announced the party platform prepared by the candidates of the party.

# United Students Present Opposition To Reigning Party In SGA Election



UNITED STUDENTS NOMINEES are seated on steps; Henry Neel and Bob Smith; standing, left to right: Carter Glass, Claude Taylor, Roy Giehl, Betty Carey, Pat Vincent, and Bill Wilson.

## Newly Formed Group Includes Greeks, Others

### Cotton And Smith Are Candidates For President's Office

Campus politics will take the limelight on campus next week with the Student Government Association elections scheduled for Friday, May 4. At the present, two parties have declared their candidates for the day-long election.

## Constitutionalist Platform

### Fred Dorr, Chairman of the Constitutionalist Party, Has Announced the Party Platform Prepared by the Candidates of the Party.

The Constitutionalist Party will endeavor to accomplish tasks which are conceivable within the realm of actuality. We do not pretend to make claims that are beyond our power to accomplish or perform.



CONSTITUTIONALIST NOMINEES are seated on steps: Bill Nix, Brewster Todd, Jr., Fred Davis, and Franklin Cook; seated: Bruce Cotton, Paul Wright, General Peterson, Don Richardson, and David Nightingale.

### United Students Platform

Henry Neel, chairman of the United Students Party, has announced the party platform prepared by members of the party.

### Constitutionalist Platform

Fred Dorr, chairman of the Constitutionalist Party, has announced the party platform prepared by the candidates of the party.

### Our Apology, Helen

Helen Smith, senior in the College of Arts and Sciences, was elected to Phi Beta Kappa, senior national scholastic honor. Her name was omitted unintentionally from last week's Kernel.

### Louisa Wilson Represents UK

Miss Louisa Wilson, College of Education senior, has been named UK's representative to the 1951 Kentucky Mountain Laurel Festival to be held at Pineridge.

### SGA Actions And Policies Explained By Ballantine

By Dorman Cordell  
With the election of Assembly members of the Student Government Association approaching, many students are curious as to just what the SGA is, and what it does.

### Sigma Chi's 'Best Dressed' Contest To Be Held Tuesday In Memorial Hall

Collegiate Fashions Will Be Keypote  
Collegiate fashion and the "new look" in styles for men and women "Gambler, Don't Lose Your Place," the annual Sigma Chi fraternity "Best Dressed" contest scheduled for 7:30 p.m. Tuesday in Memorial Hall.

### 28 UK Students To Try For Titles

Kappa Alpha Theta; Jane LaFollette, Chi Omega; Joyce Harrison, Alpha Delta Pi; Mary Jayne Finson, Alpha Xi Delta; Sara Davidson, Zeta Tau Alpha; Phi Sigma; Beta Beta Beta; Gamma Delta; Judy Sonnabend, Tau Alpha Pi.

### Dr. U. T. Holmes Will Address Foreign Language Conference

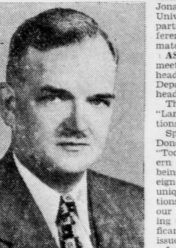
Dr. Urban T. Holmes, the Kenan Professor of Philology at the University of North Carolina, will open today's session of the Fourth University of Kentucky Foreign Language Conference. The conference began last night with a concert.

### Our Apology, Helen

Helen Smith, senior in the College of Arts and Sciences, was elected to Phi Beta Kappa, senior national scholastic honor. Her name was omitted unintentionally from last week's Kernel.

### Louisa Wilson Represents UK

Miss Louisa Wilson, College of Education senior, has been named UK's representative to the 1951 Kentucky Mountain Laurel Festival to be held at Pineridge.



Urban T. Holmes

The Kentucky Kernel

UNIVERSITY OF KENTUCKY

Issued weekly during school, except holidays and terms, and entered at the Post Office at Lexington, Kentucky, as second class matter under the Act of March 3, 1879.

SUBSCRIPTION RATES \$1.00 per semester

JANET ANDERSON, Editor; BILL DON GROTE, Business Mgr.; DICK MACKAY, Managing Editor; ROSEMARY HILLING, News Editor

Editorial Staff

BILL MANSFIELD, Assistant Managing Editor; KATHRYN WHITMER, Ed. Conf. Mgr.; Assistant News Editor; CLARA EARLY, Society Editor; EMILY CAMPBELL, Assistant; DOMINUS CHOWELL, Feature Editor; BOB ANDERSON, Photographer; BILL SCHLEIBER, JOHN WILTZ, Copy Desk; PAUL KNAPP, MELVIN MITCHELL, BILL BOKROBY, RAY COLEBY, HAI GROSS, MARTHA TAYLOR, News Desk; ROBERT A. MOORE, Cartoonist; DOLLY SULLIVANT, Proofreader.

Sports Staff

LEWIS DONOHUE, Editor; FRED LAWSON, Assistant; E. T. KING, DON ANDERSON, DICK WOLFEINSTEIN, JOE HOWARD, BARRY BUTTNER, Writers.

Business Staff

ART WEINBERG, Advertising Manager; BERT MCKENNA, NEAL ASHER, Advertising Staff; YO COLETTA, Circulation Manager.

Reporters

Carley Monroe, Dorman Cordehl, Dolly Sullivant, Mary Ellen Hooge, Janet Payne, Pat Green, Elaine Moore, Bob Finn, Hazel Jones, Roberta Clark, Faye Newton, Elza Whalen, Barry Buttner, Ed Owsley, Cynthia Collis, Beatrice Van Horn, Louis Hempel, Charles Tully, Richard Taylor, Bill Burlington, Suzanne Switzer, Thornton Wright, Babs Hickey, Jean Grant.

SGA Time Again

It's encouraging to see the return of the two-party system in the Student Government Association spring elections. There's little enough interest in SGA as it is, and last fall's one-party walk-over didn't help matters any.

We have always felt that competition should spring from issues instead of following the Greek versus Independent pattern. Although there are no actual issues involved in the current campaign, the competition provided by the United Students Party, composed of both Greeks and Independents, will provide the spark of interest necessary to the life of any organization and the success of any election.

The comments heard about the coming elections point up the already established fact that "nobody knows what SGA is all about" and "SGA never does anything." It's also pretty well known that SGA has little power to do anything. Its constitution is filled with clauses reading "subject to the approval of . . ." (the University Faculty or the President) and most of the powers are along the line of "advise," "request," and "recommend." The Assembly's lack of control over its own budget is also a severe limitation.

But we still believe SGA's existence is justified — if on no other grounds than that it shows an interest in student welfare and a desire for self-government still exist. And the Assembly does perform many valuable student services outside the governing field.

As long as SGA keeps trying and does what it can, there's a chance that it may some day become an actual, functioning Student GOVERNMENT Association.

A feature about the work and constitution of SGA appears elsewhere in today's Kernel. We hope it helps a little to answer the question "What's SGA all about?"

May 2 Is Final Date To Submit Dissertations

The deadline for these for graduate students working for Master's degrees and for dissertations from candidates for Doctor's degrees has been set at May 2. These works should be submitted to the Graduate School. Additional information may be obtained by contacting the office of the Graduate School in Pence Hall.

Interviews Offered For Summer Jobs

Mr. Robert Gibson, representative of a Marshall Field Enterprise, will interview students for summer positions from 9 a.m. to 5 p.m. on Thursday and Friday, May 2 and 4, in Room 128 of the SUB.

According to Mr. Gibson, the positions offered make it possible for students to earn several thousand dollars or more this summer. Although appointments have already been made with several applicants, anyone wishing to apply for a position may come. Applicants who are hired may work in their own home towns, or any part of the country they choose.

Education Honorary Plans Tea Thursday

Kappa Delta Phi, honorary education fraternity, will entertain with a tea Thursday afternoon at 4:45-5:30 in the Music Room of the Student Union Building, honoring the new members of the organization.

All members of the College of Education faculty, their wives and husbands, presidents of the fourteen campus honorary societies, and active and alumni members of Kappa Delta Phi may attend.

Immediately preceding the tea, a formal installation of officers will be held in Room 127 of the SUB.

TB Tests, Chest X-Rays To Be Given UK Seniors

All seniors graduating in June and August are requested to report to Health Service for a tuberculin test and chest X-ray on April 30, May 1 or 2 between 1 and 5 p.m.

This examination is a policy for all seniors and is compulsory for Physical Education majors.

Alumni News

THEN and NOW

Kentucky pharmacists held a work-shop at the Seelbach hotel in Louisville April 19, and four UK College of Pharmacy graduates participated on the program.

SIDNEY PANSAMANEK, '18, of Louisville, president of the Kentucky Pharmaceutical Association presided at the one-day conference. The invocation was given by Dean EARL P. SLOAN, '23, of the College of Pharmacy.

WILLIAM CREEY, '29, of Lexington and JAMES DRISKILL, '25, of Carrollton, lead discussions during the meeting.

SAM H. RIDGWAY of Shepherdsville is the new Kentucky plant superintendent for the Southern Bell Telephone and Telegraph Company. He was appointed last December.

MISS LOUISE POTTINGER, former director of nurses at the Good Samaritan hospital in Lexington, has accepted a position as associate professor of nursing at the University of Virginia hospital, in Richmond.

She has been director of nurses at the Good Samaritan for the last 15 years. A native of Bardonia, Miss Pottinger served as president of the Kentucky State Nurses Association and the Kentucky League of Nurses.

A paper on the effect of taper on screw thread load distribution, written by Mr. H. G. Macke, mechanical engineering graduate, and E. E. Stockley, was presented at the spring meeting of the American Society of Mechanical Engineers, held April 2 in Atlanta.

The research and writing of the paper was done by Mr. Macke while an employee of the Aircraft Gas Turbine Division of General Electric.

Marion Walton Bell of Flemingsburg has accepted a position as assistant to the soil conservationist at Carlisle.

A graduate of the University, Mr. Bell was a vetrus instructor at Crab Orchard before accepting the position at Carlisle.

ROBERT P. EVANS of Lexington who has been a civilian athletic director to the Army in Germany, has been recalled to extended active duty from the officers' reserve corps as a captain.

Capt. Evans is assigned to the Heidelberg Military post as post athletic director where he is in charge of the sports program for officers and enlisted men.

A graduate of K.M.I. and the University, Capt. Evans entered the Army in 1942 as a second lieutenant and served during World War II as a platoon leader and company commander with the First Armored Division in the Mediterranean theater.

MISS LOUISE POTTINGER, former director of nurses at the Good Samaritan hospital in Lexington, has accepted a position as associate professor of nursing at the University of Virginia hospital, in Richmond.

She has been director of nurses at the Good Samaritan for the last 15 years. A native of Bardonia, Miss Pottinger served as president of the Kentucky State Nurses Association and the Kentucky League of Nurses.

A paper on the effect of taper on screw thread load distribution, written by Mr. H. G. Macke, mechanical engineering graduate, and E. E. Stockley, was presented at the spring meeting of the American Society of Mechanical Engineers, held April 2 in Atlanta.

The research and writing of the paper was done by Mr. Macke while an employee of the Aircraft Gas Turbine Division of General Electric.

Marion Walton Bell of Flemingsburg has accepted a position as assistant to the soil conservationist at Carlisle.

A graduate of the University, Mr. Bell was a vetrus instructor at Crab Orchard before accepting the position at Carlisle.

College Of Pharmacy RX NOTES



By Eugene Miller

Miss Joy Rasmick and Don C. Harris were married April 11 in the Brandenburg Church, Brandenburg. Miss Harris is a graduating senior in the UK College of Pharmacy and Mr. Harris is a graduate of the UK College of Pharmacy, class of 1950.

At present, he is employed at the Corner Drug Store in Campbellsville.

Miss Carol Clarice Sharp, pharmacy junior, gave a shower in honor of Miss Rasmick, at her home on April 9. All the girls of the College of Pharmacy were invited.

THE LAMBDA CHAPTER of the Alpha Zeta Omega Pharmaceutical Fraternity recently initiated ten pledges. The ceremony was held in the College of Pharmacy Lounge.

Those initiated were Arnie Purris, Myles Davidson, Sidney Piga, Jerry Meli, Hershel Weinbert, Lawrence Sabers, Joe Roubin, David Dreitman, Sam Kushner, and Eugene Miller.

The following students and officers of the student branch of the American Pharmaceutical Association attended the convention in Ann Arbor, Michigan on April 15-17.

Carl Sharp, Gloria Hartman, James Feltz, Elmer McDaniel. One of the main topics of discussion was the "Five Year Pharmacy Curriculum."

A Louisville team won the men's part of the 1951 Midwest Regional tournament of the American Contract Bridge League at the Seelbach Hotel on April 6. The men, Julian Koslowe and Leonard Goren, scored 195 points. Players from 12 states besides Kentucky entered the tournament. Julia Koslowe is a graduating senior at the College of Pharmacy.

THE PHI DELTA CHI Professional Fraternity recently sponsored a dance at the Seelbach Hotel Banquet Room on April 6. The

dance was highlighted by the presence of Mr. James W. Miles and Mr. Wilfred H. Duncan Jr. Antithesis of the name of the latest medical journal to join the ranks of professional literature. It is published monthly by the Washington Institute of Medicine and is edited by Henry Walsh, director of the Antibiotics of the Federal Drug Administration. Almost 50 internationally known authorities are listed as contributors. Among them are Dr. Selmer Waksman, co-discoverer of streptomycin, Sir Alexander Fleming of penicillin fame, and Dr. Charles E. Ditcher, medical director of Schenley Laboratories.

Formula for Success Add Katharine Gibbs secretarial training to your college education! With this combination, you're prepared to go far in any business or profession.

Enroll today! Write these for catalog: Katharine Gibbs

111 Superior St., Chicago 11 250 August 25, 1951 (K.G.B. 100) 100 Washington St., Boston 10

What's New On Wax . . . —and at Shackleton's

• The Loveliest Night of the Year—Mario Lanza

• When You and I Were Young—Maggie Blane

• September Song—Stan Kenton

• A-Ba-Daba-Honeymoon

• Mocking Bird Hill

• By My Love

• Across the Wide Missouri

• I Apologize

• Sparrow In The Tree-top

• She's Got Her Eyes On—Disney Gillespie

• I'll Never Know Why—Billy Daniels

• Judith—Louisville Symphony Orchestra L. P. Mercury Ms. 10088

Late Hits Arriving Daily On All Speeds

Shackleton's 147 E. MAIN • LEXINGTON 'The Record Center of the South'

YW To Install New Cabinet

Installation services for the new officers and Cabinet of the YWCA will be held at 5 p.m. Tuesday in the Music Room of the Student Union. It was announced by Jo Dougherty, retiring president.

Officers to be installed are Sally Hancock, president; Ruth Ann Magrard, vice president; Polly Boteler, secretary; and Evelyn Baker, treasurer.

Heading the four commissions, along with a co-chairman from the YM Cabinet, will be Ann Capron, Faith and Life Commission; Betty Jo Turner, Personal and Campus Affairs; Marilyn Kilens, Social Responsibility; and Betty Carol Pace, World Relationships.

New committee chairmen are: Worshipful, Betty Paul Lunney; Social, Pat Vincent; Social Service, Betty Dickinson; World Student Service Fund, Marilyn Youmans; Study Yers, Mary Pardue; Publicity, Barbara Baldwin; Membership, Myra Hensley; and Race Relations, June Webb.

Jeanne Hubbard will be YW Advisor to the Freshman Club; Ann Williams will head the Dutch Lunch Club; and Nancy Flood will serve as Foreign Student Advisor.

New committee chairmen are: Worshipful, Betty Paul Lunney; Social, Pat Vincent; Social Service, Betty Dickinson; World Student Service Fund, Marilyn Youmans; Study Yers, Mary Pardue; Publicity, Barbara Baldwin; Membership, Myra Hensley; and Race Relations, June Webb.

Jeanne Hubbard will be YW Advisor to the Freshman Club; Ann Williams will head the Dutch Lunch Club; and Nancy Flood will serve as Foreign Student Advisor.

New committee chairmen are: Worshipful, Betty Paul Lunney; Social, Pat Vincent; Social Service, Betty Dickinson; World Student Service Fund, Marilyn Youmans; Study Yers, Mary Pardue; Publicity, Barbara Baldwin; Membership, Myra Hensley; and Race Relations, June Webb.

Jeanne Hubbard will be YW Advisor to the Freshman Club; Ann Williams will head the Dutch Lunch Club; and Nancy Flood will serve as Foreign Student Advisor.

New committee chairmen are: Worshipful, Betty Paul Lunney; Social, Pat Vincent; Social Service, Betty Dickinson; World Student Service Fund, Marilyn Youmans; Study Yers, Mary Pardue; Publicity, Barbara Baldwin; Membership, Myra Hensley; and Race Relations, June Webb.

Jeanne Hubbard will be YW Advisor to the Freshman Club; Ann Williams will head the Dutch Lunch Club; and Nancy Flood will serve as Foreign Student Advisor.

New committee chairmen are: Worshipful, Betty Paul Lunney; Social, Pat Vincent; Social Service, Betty Dickinson; World Student Service Fund, Marilyn Youmans; Study Yers, Mary Pardue; Publicity, Barbara Baldwin; Membership, Myra Hensley; and Race Relations, June Webb.

Jeanne Hubbard will be YW Advisor to the Freshman Club; Ann Williams will head the Dutch Lunch Club; and Nancy Flood will serve as Foreign Student Advisor.

New committee chairmen are: Worshipful, Betty Paul Lunney; Social, Pat Vincent; Social Service, Betty Dickinson; World Student Service Fund, Marilyn Youmans; Study Yers, Mary Pardue; Publicity, Barbara Baldwin; Membership, Myra Hensley; and Race Relations, June Webb.

Jeanne Hubbard will be YW Advisor to the Freshman Club; Ann Williams will head the Dutch Lunch Club; and Nancy Flood will serve as Foreign Student Advisor.

New committee chairmen are: Worshipful, Betty Paul Lunney; Social, Pat Vincent; Social Service, Betty Dickinson; World Student Service Fund, Marilyn Youmans; Study Yers, Mary Pardue; Publicity, Barbara Baldwin; Membership, Myra Hensley; and Race Relations, June Webb.

Jeanne Hubbard will be YW Advisor to the Freshman Club; Ann Williams will head the Dutch Lunch Club; and Nancy Flood will serve as Foreign Student Advisor.

New committee chairmen are: Worshipful, Betty Paul Lunney; Social, Pat Vincent; Social Service, Betty Dickinson; World Student Service Fund, Marilyn Youmans; Study Yers, Mary Pardue; Publicity, Barbara Baldwin; Membership, Myra Hensley; and Race Relations, June Webb.

Jeanne Hubbard will be YW Advisor to the Freshman Club; Ann Williams will head the Dutch Lunch Club; and Nancy Flood will serve as Foreign Student Advisor.

New committee chairmen are: Worshipful, Betty Paul Lunney; Social, Pat Vincent; Social Service, Betty Dickinson; World Student Service Fund, Marilyn Youmans; Study Yers, Mary Pardue; Publicity, Barbara Baldwin; Membership, Myra Hensley; and Race Relations, June Webb.

Jeanne Hubbard will be YW Advisor to the Freshman Club; Ann Williams will head the Dutch Lunch Club; and Nancy Flood will serve as Foreign Student Advisor.

New committee chairmen are: Worshipful, Betty Paul Lunney; Social, Pat Vincent; Social Service, Betty Dickinson; World Student Service Fund, Marilyn Youmans; Study Yers, Mary Pardue; Publicity, Barbara Baldwin; Membership, Myra Hensley; and Race Relations, June Webb.

Jeanne Hubbard will be YW Advisor to the Freshman Club; Ann Williams will head the Dutch Lunch Club; and Nancy Flood will serve as Foreign Student Advisor.

New committee chairmen are: Worshipful, Betty Paul Lunney; Social, Pat Vincent; Social Service, Betty Dickinson; World Student Service Fund, Marilyn Youmans; Study Yers, Mary Pardue; Publicity, Barbara Baldwin; Membership, Myra Hensley; and Race Relations, June Webb.

Jeanne Hubbard will be YW Advisor to the Freshman Club; Ann Williams will head the Dutch Lunch Club; and Nancy Flood will serve as Foreign Student Advisor.

New committee chairmen are: Worshipful, Betty Paul Lunney; Social, Pat Vincent; Social Service, Betty Dickinson; World Student Service Fund, Marilyn Youmans; Study Yers, Mary Pardue; Publicity, Barbara Baldwin; Membership, Myra Hensley; and Race Relations, June Webb.

Jeanne Hubbard will be YW Advisor to the Freshman Club; Ann Williams will head the Dutch Lunch Club; and Nancy Flood will serve as Foreign Student Advisor.

New committee chairmen are: Worshipful, Betty Paul Lunney; Social, Pat Vincent; Social Service, Betty Dickinson; World Student Service Fund, Marilyn Youmans; Study Yers, Mary Pardue; Publicity, Barbara Baldwin; Membership, Myra Hensley; and Race Relations, June Webb.

Jeanne Hubbard will be YW Advisor to the Freshman Club; Ann Williams will head the Dutch Lunch Club; and Nancy Flood will serve as Foreign Student Advisor.

New committee chairmen are: Worshipful, Betty Paul Lunney; Social, Pat Vincent; Social Service, Betty Dickinson; World Student Service Fund, Marilyn Youmans; Study Yers, Mary Pardue; Publicity, Barbara Baldwin; Membership, Myra Hensley; and Race Relations, June Webb.

Jeanne Hubbard will be YW Advisor to the Freshman Club; Ann Williams will head the Dutch Lunch Club; and Nancy Flood will serve as Foreign Student Advisor.

New committee chairmen are: Worshipful, Betty Paul Lunney; Social, Pat Vincent; Social Service, Betty Dickinson; World Student Service Fund, Marilyn Youmans; Study Yers, Mary Pardue; Publicity, Barbara Baldwin; Membership, Myra Hensley; and Race Relations, June Webb.

Jeanne Hubbard will be YW Advisor to the Freshman Club; Ann Williams will head the Dutch Lunch Club; and Nancy Flood will serve as Foreign Student Advisor.

New committee chairmen are: Worshipful, Betty Paul Lunney; Social, Pat Vincent; Social Service, Betty Dickinson; World Student Service Fund, Marilyn Youmans; Study Yers, Mary Pardue; Publicity, Barbara Baldwin; Membership, Myra Hensley; and Race Relations, June Webb.

Jeanne Hubbard will be YW Advisor to the Freshman Club; Ann Williams will head the Dutch Lunch Club; and Nancy Flood will serve as Foreign Student Advisor.

Jest Knappin'

By Paul Knapp

I don't want to be a bad guy about it, but if all the local establishments insist on re-painting their rest rooms, the best friend I have is going to run out of contemporary folklore. Wasn't it some psychologist who should have said "Original creation is aided by the ideal environment"? Now that we've had our lesson on morals and morale for today, let's see how the other half is living.

"What you need for your health is a little sun and air."

"But, Doctor, I'm not even married."

"Did you get home all right after the party last night?"

"Yes, thanks; except that just as I was turning into my street some idiot stepped on my fingers."

He: "Can I take you home?" She: "Sure, where do you live?"

College Youth: "Please, lady, can you help a cripple by giving him a quarter for a sandwich and coffee?" Old lady (looking at him): "How are you crippled?" College Youth: "Financially."

A fellow I know lost his life last summer in Venice. He left a bar in a drunken stupor and laid down in the gutter to sleep it off.

House Mother: "I thought I saw you taking a gentleman up to your room last night, Miss Jones."

WE SPECIALIZE In Sundry Needs of College Folks

TOILETRIES COSMETICS PERSONAL SUPPLIES HOME STYLE FOOD AT STUDENT BUDGET PRICES

Complete Fountain Service Breakfasts, Lunches, Dinners, and All Short Orders

VIADUCT STORE East High & Viaduct

cleaned and returned Wrinkle-Free on hangers from

BECKER'S Lime at Euclid

Miss Jones: "Yeah, that's what I thought, too."

"What do you think would go well with my new green and purple argyle?"

Stan: "How do you like bathing beauties?"

Don: "I don't know. I've never washed any."

PERSONAL LOANS Designed Especially for UK Faculty and Personnel UP TO \$500 PAYMASTER LOANS Incorporated 117 Chesapeake Fred Fogazzi, Mgr. Dut. 2-7416

It Means So Much . . . . It really is important to her that she wear a distinctive corsage. Foushee's will be glad to help you please her. The decorations for your big date mean a lot, too. Let Foushee help with the theme for your fraternity or sorority dance. We're As Close As Your Phone FOUSHEE FLORIST 216 S. Lime Phone 3-4854

"Fashion Field" Our name is just what it implies — The newest styles in women's wear and accessories at the lowest prices. • Toppers — all wool — Special . . . . . 19.95 • Pure Rayon Shantung Suits — Special 15.00 • All Wool Spring Suits — Special 1/2 Price • Dresses of Pure Silk, Rayon, Nylon and Cotton Priced . . . . . 6.75 to 26.95

"Fashion Field" from BECKER'S Lime at Euclid 145 S. Lime

Be Happy - Go Lucky! LUCKIES TASTE BETTER THAN ANY OTHER CIGARETTE! Fine tobacco — and only fine tobacco — can give you the perfect mildness and rich taste that make a cigarette completely enjoyable. And Lucky Strike means fine tobacco. So if you're not happy with your present brand (and a 38-city survey shows that millions are not), switch to Luckies. You'll find that Luckies taste better than any other cigarette. Be Happy — Go Lucky today! The way I make my girl feel good when things don't seem so funny is just to say, "The world's okay. For here's a Lucky, honey!" M. J. Sarton Stanford University

LUCKY-TUCKY This week's Lucky-Tucky is Bob Boulter. Bob, a senior in the College of Commerce is a member of Sigma Chi fraternity. CEDAR VILLAGE Serving 11:45 a.m. — 1:30 p.m. and 5:00 p.m. — 8:00 p.m. Shackleton's 147 E. MAIN • LEXINGTON 'The Record Center of the South'



Friday, April 27, 1951

Social Scene

Clara-fying Campus Capers

By Clara Early
SUE NEWELL, junior in the college of Education, and member of the Kappa Alpha Theta sorority was chosen as Dream Girl of the Pi Kappa Alpha fraternity at the spring formal last Friday night.

Other new officers of YKCA are Charles Campbell, vice-president; Jack Willard, secretary, and Frank Wiedmer, treasurer.

DELTA DELTA DELTA social society will hold a tea dance this afternoon from 2-4 p.m. at the Lexington Country Club.

DELTA DELTA DELTA social society will hold a tea dance this afternoon from 2-4 p.m. at the Lexington Country Club.

DELTA DELTA DELTA social society will hold a tea dance this afternoon from 2-4 p.m. at the Lexington Country Club.

DELTA DELTA DELTA social society will hold a tea dance this afternoon from 2-4 p.m. at the Lexington Country Club.

DELTA DELTA DELTA social society will hold a tea dance this afternoon from 2-4 p.m. at the Lexington Country Club.

DELTA DELTA DELTA social society will hold a tea dance this afternoon from 2-4 p.m. at the Lexington Country Club.

DELTA DELTA DELTA social society will hold a tea dance this afternoon from 2-4 p.m. at the Lexington Country Club.

DELTA DELTA DELTA social society will hold a tea dance this afternoon from 2-4 p.m. at the Lexington Country Club.

DELTA DELTA DELTA social society will hold a tea dance this afternoon from 2-4 p.m. at the Lexington Country Club.

DELTA DELTA DELTA social society will hold a tea dance this afternoon from 2-4 p.m. at the Lexington Country Club.

DELTA DELTA DELTA social society will hold a tea dance this afternoon from 2-4 p.m. at the Lexington Country Club.

DELTA DELTA DELTA social society will hold a tea dance this afternoon from 2-4 p.m. at the Lexington Country Club.

DELTA DELTA DELTA social society will hold a tea dance this afternoon from 2-4 p.m. at the Lexington Country Club.

DELTA DELTA DELTA social society will hold a tea dance this afternoon from 2-4 p.m. at the Lexington Country Club.

DELTA DELTA DELTA social society will hold a tea dance this afternoon from 2-4 p.m. at the Lexington Country Club.

DELTA DELTA DELTA social society will hold a tea dance this afternoon from 2-4 p.m. at the Lexington Country Club.

DELTA DELTA DELTA social society will hold a tea dance this afternoon from 2-4 p.m. at the Lexington Country Club.

Language Exam Dates Set

The basic achievement examination in foreign languages will be given on May 9, 10, 11. All students wishing to take this test must sign up for it in Room 128, McVee Hall by May 8, Dean M. M. White has announced.

ROTC Selects New Sponsors

Mary Elizabeth Ballard, freshman, was crowned brigade sponsor last Friday at the annual Military Ball sponsored by Sashard and Blaine, national honorary military fraternity.

Ground Force sponsors are Regimental sponsor, James Hawick; First Battalion, Audrey Breneman; Second Battalion, Eleanor Gash; Company A, Lou Toombs; Company B, Jane Bartlett; Company C, Mary Rose House; Company D, Young King; Company E, Ann Oldham; and Company F, Joan Van Beber.

Air Force sponsors are Wing sponsor, Joe King; First Group, Jane Bartlett; Second Group, Bobby Compton; Squadron A, Nancy Carol; Squadron B, Joyce Stephens; Squadron C, Mary Ruth Jones; Squadron D, Carolyn Carter; Squadron E, Dorothy Dixon; and Squadron F, Louise Borie.

Student Newspaper Receives High Rating

The Associated Collegiate Press in its ratings of college newspapers for the first semester of 1950-51, listed the Kentucky Kernel as one of the thirteen best newspapers in college newspapers in 1950-51.

The sports page, which was edited by Bob Gordon, now with the Lexington Herald, received the highest praise from the ACP. Coverage, treatment, and style of writing on the sports page received perfect ratings.

Wesleyans to Meet in Cincinnati Sunday
Fourteen UK and Transylvania members of Wesley Foundation will meet with the University of Cincinnati Wesleyans in Cincinnati Sunday.

Wesley Foundation will hold a service to Natural Bridge May 5. Other plans will be announced later.

ASCE Chapters Plan Joint Dinner Meeting

The University of Louisville and UK student chapters of the American Society of Civil Engineers, will hold a joint dinner meeting with the state section of the ASCE tonight at 6:30 p.m. at the Brown Hotel at Louisville.

Three students from each school will present technical papers in competition for prizes given by the state section. J. A. Howard, C. G. Mitchell, and Miss Barbara Beam will represent UK.

CHICAGO COLLEGE OF OPTOMETRY Fully Accredited

An Outstanding College in a Splendid Profession
Entrance requirement thirty semester hours of credit in specified courses. Advanced standing granted for additional L.A. credits in specified courses.

Registration Now Open
Excellent clinical facilities. Recreational and athletic activities. Dormitories on campus. Approved for Veterans.

2303 No. Clark St. CHICAGO 14, ILLINOIS

Men's Glee Club To Present Annual Concert This Sunday

The University Men's Glee Club will present its annual concert at 4 p.m. Sunday in Memorial Hall. This will be the first appearance of Mr. Earl Holloway, baritone, as director of the group.

The Glee Club numbers about 40 men and is composed of lay students as well as music majors. The group recently toured Southern and Eastern Kentucky, giving concerts in several towns.

Mr. Holloway joined the music faculty last fall and is a graduate of George Peabody College, Nashville. He has been soloist with the Nashville Symphony Orchestra and appeared in a number of recitals and operatic productions.

James Benny Smith, junior in the College of Arts and Sciences, will accompany Mr. Holloway, on the piano.

Campbell Is Named Phi Mu Alpha Leader

Kent Campbell, senior music student, was elected president of Phi Mu Alpha, men's national music honorary fraternity following a banquet at the SUB Sunday night. He will succeed Nathaniel "Tinker" Bagarty.

Other officers elected were Jim Scott, vice-president; Fred Hines, secretary; Don Hartford, treasurer; Bill Sletten, historian; "Tinker" Bagarty, alumni secretary; and Paul Knapp, historian.

Proceeds of the banquet, the following men were formally pledged: Bill Jones, Elbert Harter, Albert Aesch, Max Smith, and Dave Robinson.

Presbyterian Minister Will Lecture Sunday

The Rev. Edward Goldman, pastor of the First Presbyterian Church of Lawrenceburg, will speak and conduct a discussion on "Group Dynamics and what it means to a student Christian group" for the Westminster Fellowship evening program Sunday.

The program opens with supper at 6:30 p.m., followed by Evening song and the discussion period.

Eight Are Initiated By Alpha Chi Sigma

Initiation ceremonies for Alpha Chi Sigma, men's honorary chemical society, were held last week in Kastle Hall.

New members are J. E. Gump, Ernest Hart, C. Kenneth Black, Dan Goldfarb, Joseph Smith, Donald Wilson, Carl Berger, and William London.

Qualifications for the honorary require each student to be a second semester sophomore, a major in chemistry or an allied field, and possess good character and a high scholastic standing. Dr. William Wagner, of the Chemistry Department, said.

Home Ec Students To Attend Workshop

Students and faculty members of the College of Home Economics will attend the workshop meeting of Province Six at Berea College, today and tomorrow. Theme of the workshop is "Strengthening Home Economics."

Delegates are Betty Ford, Kentucky State President; Annette Westerman, club president; Jean Thompson, vice president; Mrs. Polly Freed, club adviser; Miss Leora Bentley, club adviser elect; Miss Helen Wilmore, province adviser; Miss Mary Sweeney, former director of Merrill-Palmer Institute, Detroit; Rachel Johnson, Wilma Faye Sumpter, Marja Percy, and Bruce Giddon, will present a panel discussion on their trip to Europe last summer as 4-H Farm Youth Exchange Students.

Approximately 150 college home economics members representing 60 colleges from Kentucky, Indiana, Ohio, and West Virginia will attend the workshop.

Dr. Szent-Gyorgyi Speaks Here May 4

Dr. A. Szent-Gyorgyi of the Biological Marine Laboratory in Woods Hole, Mass., will be the principal speaker at an open meeting under the sponsorship of the Department of Bacteriology and the University Bacteriology Society.

The subject of his talk will be "Patterns and Levels of Biological Organization." The meeting will be held at 8 p.m. May 4 in Room 200 of the Punhouser Biological Science Building.

Members of a class in Institutional Economics in the College of Agriculture and Home Economics, will visit the Kruger Foundation, the Terrace Plaza Hotel, Milk Cafeteria and Skky Chefs, Inc., at the Cincinnati airport.

Taking the trip with Miss Elizabeth Helton, instructor, will be Sue McCann, Frances Jones and Maryery Mitchell.

The class made a similar trip to Louisville on Tuesday where they visited the foods departments of the Stewart Company Tea Room, the Colomade Restaurant, and the Nichols General Hospital.

Lances Scholarship Winners Are Named

Donald E. Gelle, commerce junior, and Richard J. Fuchs, agriculture junior, have been awarded the Lances Junior men's leadership society scholarships.

The scholarships, valued at \$400 and \$300 respectively, are for the year 1951-52.

Recipients are chosen on the basis of scholarship character and need. Funds for the annual award are raised by the Lances carnival held each fall on the campus.

Home Ec Students To Attend Workshop

Students and faculty members of the College of Home Economics will attend the workshop meeting of Province Six at Berea College, today and tomorrow. Theme of the workshop is "Strengthening Home Economics."

Delegates are Betty Ford, Kentucky State President; Annette Westerman, club president; Jean Thompson, vice president; Mrs. Polly Freed, club adviser; Miss Leora Bentley, club adviser elect; Miss Helen Wilmore, province adviser; Miss Mary Sweeney, former director of Merrill-Palmer Institute, Detroit; Rachel Johnson, Wilma Faye Sumpter, Marja Percy, and Bruce Giddon, will present a panel discussion on their trip to Europe last summer as 4-H Farm Youth Exchange Students.

Approximately 150 college home economics members representing 60 colleges from Kentucky, Indiana, Ohio, and West Virginia will attend the workshop.

Dr. Szent-Gyorgyi Speaks Here May 4

Dr. A. Szent-Gyorgyi of the Biological Marine Laboratory in Woods Hole, Mass., will be the principal speaker at an open meeting under the sponsorship of the Department of Bacteriology and the University Bacteriology Society.

The subject of his talk will be "Patterns and Levels of Biological Organization." The meeting will be held at 8 p.m. May 4 in Room 200 of the Punhouser Biological Science Building.

Members of a class in Institutional Economics in the College of Agriculture and Home Economics, will visit the Kruger Foundation, the Terrace Plaza Hotel, Milk Cafeteria and Skky Chefs, Inc., at the Cincinnati airport.

Taking the trip with Miss Elizabeth Helton, instructor, will be Sue McCann, Frances Jones and Maryery Mitchell.

The class made a similar trip to Louisville on Tuesday where they visited the foods departments of the Stewart Company Tea Room, the Colomade Restaurant, and the Nichols General Hospital.

Lances Scholarship Winners Are Named

Donald E. Gelle, commerce junior, and Richard J. Fuchs, agriculture junior, have been awarded the Lances Junior men's leadership society scholarships.

The scholarships, valued at \$400 and \$300 respectively, are for the year 1951-52.

Recipients are chosen on the basis of scholarship character and need. Funds for the annual award are raised by the Lances carnival held each fall on the campus.

Expert... Watch and Jewelry Repairing
All Work Guaranteed For One Year

Tiny's Jewelry Shop
109 N. Lime
"Twenty steps from Main"

Short Orders LUNCHES Of All Kinds Fountain Service
Student SPECIAL 50c LUNCH DAILY
Come Over To The...

Campus Kitchen
545 S. Lime
Closed Sundays
Daily 6 a.m.—9 p.m.

The Story in a Corset Box
It's the same story you've been a part of since your first big formal... but had you ever thought that there is no final chapter.

Michler Florist
417 E. Maxwell
Dial 3-0929

Koffee Klub To Hear 'Miss Margie' Tuesday
Koffee Klub will have Miss Margie McLambin as its speaker at 4 p.m. on Tuesday, in the Music Room of the Student Union Building.

Thick & Cooling DAIRY QUEEN
Talk about thick! Brother, you haven't tasted anything till you try one of these double-thick, extra-thick DAIRY QUEEN malts and shakes.

Roberson Is Elected Shawneetown Mayor
B. K. Roberson, education senior, was elected mayor at the Shawneetown Council meeting last Tuesday evening.

FOR EFFICIENT PICK-UP AND DELIVERY SERVICE
DIAL 2-1340 CASH AND CARRY

Kentucky Cleaners
921 SOUTH LIME
895 N. Broadway
lots of parking space

GIORDANO'S SHOE REBUILDING
387 SOUTH LIME AT EUCLID
Next To Becker's Main Plank
Best of Workmanship And Materials All Work Guaranteed

AROUND THE CAMPUS
Miss Betty Patton wearing a formal of pale yellow marquisette over orange taffeta 39.95
Purcell's Fashion Floor

When the gang drops in
just the book for... PICTURE TAKERS
THIS IS Photography
NESCAFÉ makes coffee right... this minute!
Get set to play hot... at a moment's notice, any time of day or night! In the seconds it takes to start a bull session, we'll coffee can be ready for the gang.

The link is strong
The telephone forms an important link in our program of defense. It speeds the urgent, vital calls of Government, industry, The armed forces and civil defense. And the link it forms is strong. Since the end of World War II, Over thirteen million new telephones have been added to the Bell System. Billions of dollars have been spent For new equipment of all kinds. The quality and scope of service Have constantly improved. It's a good thing The telephone has grown— It is now better equipped For the big job of defense.

### Baseball Team Meets Centre On Saturday

#### Cats Return To SEC Competition Next Week

By Don Armstrong  
Al MacLeod, Cat pitcher who last Friday beat Centre with a one-hit performance, will draw the starting assignment tomorrow as Kentucky travels to Danville to engage the Colonels.

MacLeod now has the second best pitching mark for the Cats, having one victory against no defeats. He had a solid one-hit win in process against Georgia for five innings before the Bulldogs started stealing signals and chased him to the disc.

Centre used three pitchers against the Cats in their first meeting as Kentucky pounded out 18 hits. The Blue will hold the additional advantage of playing at home in this tilt.

Through last weekend, Frank Ramsey was still pacing Kentucky at the plate with an average of .452. The Madisonville outfielder collected 18 hits in 42 times at bat, including four doubles, two triples and a pair of home runs.

Behind Ramsey comes Third Baseaman Bob Terrell, who boasts an average of .369 on 13 hits in 33 trips to the plate. He is also second in runs batted in with 12 and has two doubles and two triples to his credit. Ramsey has knocked in 16 runs.

In the pitching department, Guy Strong is the leader among Kentucky hurlers with two wins and no losses. MacLeod's one victory and no losses comes second and Newton's two triumphs and three strikeouts holds third. Ben Zarank is charged with one defeat, a relief setback against Georgia.

### Hawkins Will Speak

Prof. George A. Hawkins, associate director of the Engineering Experiment Station at Purdue University, will speak on "The Basic Engineering Disciplines" at the General Engineering Assembly at 10 a. m. Thursday in Memorial Hall.

Winners of the Pi Tau Sigma plaque and the Old Times Award will be recognized.

Most of the millionaires in New York are rich.

As a rule, brunettes are not red-headed.



HE'S OUT!—Henry Abraham of ZBT tries to beat out one against PIKA but he's too late as Don Donahue stretches to snag the ball. The PIKA's won the game, 12-2.

### I-M Softball In Semi-Finals

#### Two Games On Tap For Today's Play

Games today: Sigma Nu vs. Kappa Sigma, Sigma Phi Epsilon vs. Phi Sigma Kappa.  
Monday's games: Delta Tau Delta vs. Kappa Sigma, Sigma Nu winner, Phi Kappa Tau vs. Alpha Sigma Phi.

A week from today, May 4, is the new deadline for entries in I-M handball. Play is to begin on the following Monday.

Trials of the bowling tournament were held yesterday afternoon between Phi Kappa Tau and Beta Sigma Rho. The meet was originally scheduled for Monday of this week, but was postponed.

Jerry Iman of Delta Tau Delta won the badminton singles tournament recently, defeating Phil Johnson of Sigma Nu by 13-17, 15-8, 15-8.

### Five UK Professors To Talk At Richmond

Five faculty members of the UK Mathematics Department will speak at the Kentucky section of the Mathematical Association of America tomorrow at Richmond.

The speakers will be Prof. James A. Ward, who will speak on "Three Dimensional Representation of Complex Roots"; Mr. Sherman Yarnman, "On a Joint Life Probability"; Prof. Teddus Liser, "Old and New Methods in the Theory of Elasticity"; Miss Elsie T. Church, "Invention With Respect to a Cubic of the Szyzyle Pencel" and Prof. A. W. Goodman, "The Knight's Move Sign With Respect to a Cubic of

### Philosophers Meet

The Philosophy Club will meet at 7:30 p. m. Monday in Room 204, Student Union Building. Harold Butner, a student member of the club, will speak on the "Philosophy of Emerson."

## CAGERS TO PLAY ALL-STARS

### Meet Tonight at 8:00 In Coliseum As Special Feature Of Coaching Clinic

By Fred Lawson, Assistant Sports Editor  
Georgetown, setting a state record for the highest individual total in a single game and compiling the best scoring average of any player in the state last season, Morehead mates to play along with Baker on the all-star team are 6-8 Paul Gilley, 6-5 Russell McLain and two six-footers, Etza Whaley and Jess Mayhew.

This game is a special feature of the Coaching Clinic which is being held at the University today and Saturday.

Opposing Coach Rupp as coach of the all-stars is Ellis Johnson, head coach at Morehead. Johnson is a former Wildcat star. He made the All-American squad in 1932 while performing at the guard post for Kentucky.

Coach Johnson will have two of the high scorers in the state playing for him. They are Jack Baker of Morehead and Charley Pennington of Georgetown.

Baker, a 6-2 sophomore from Holingsburg, Ohio, won all-Ohio Valley Conference honors the past season. He dropped in 32 points as Morehead defeated Eastern for his top spot by scoring 29 points.

Pennington was the big gun for

### Watches + Diamonds + Jewelry

#### Lexington Jewelry & Luggage Co.

143 S. Lime Dial 2-5125

### Clean Clothes

LOOK BETTER - WEAR BETTER

Bring all your Spring Dry Cleaning to Croppers for Prompt, Courteous Service

### Croppers Laundry

529 S. Lime 241 E. Short  
105 Walton Ave. 803 Euclid Ave.

### TAYLOR TIRE CO.

Incorporated  
Dial 2-7127  
Complete Automotive Service  
VINE & S. EASTERN  
Lexington, Ky.

### Cincy Wallops Wildcats

#### UK Whips Centre; Record Still Even

By Don Armstrong  
Winning one game and losing the next, a familiar pattern with Kentucky's baseball team, the Wildcats kept their 500 per cent win-loss record after last weekend's pair of single contests with Centre and Cincinnati.

In the first game, played Friday at Legion Field, the Cats shut out Centre by 13-0 as Al MacLeod shacked the Colonels with one-hit pitching. To back up his masterful performance, every Kentucky batter had at least one hit.

On Saturday, the Cats moved to Cincinnati to play the Bearcats and came home smattering from an 18-2

### We've found a Treasure Chest of USED TIRES for YOU!

### Not Just Ordinary Tires ... Every One Guaranteed!!!

Recent demands for new Goodyear tires have caused many motorists to trade in good tires long before their useful mileage had been used up. Their loss is your gain. Come on in and get yours today - quantities limited!

**GUARANTEED USED TIRES** 250  
This is the best crop of used tires we've ever seen! Clean tires with many, many safe miles of driving... use 'em for spares or every-day driving. We have your size.

**GUARANTEED ORIGINAL CHANGE-OVERS** 1500  
Practically new, but reduced in price because they've been driven a few miles - many, only a few blocks. Traded in by new car owners. Here you get real new-tire quality at a great saving. Many in matched sets. Assortment includes new low-pressure sizes.

**GUARANTEED RE-TREATED TIRES** 850  
Flawless body with deep new-tire tread - you get the appearance of new tires at a fraction of their cost. Top quality workmanship and material - carefully inspected for safety to assure you more than your money's worth in safe mileage.

**TERMS AS LOW AS 50¢ A WEEK**  
SPECIAL PRICES TO UK STUDENTS & PERSONNEL

### Brighter Shines

WITH 1/2 THE RUBBING  
COVERS SCUFF MARKS! GIVES SHOES RICHER COLOR! Black, Tan, Brown, Dark Tan, Mid-Tan, Blue, Oxblood, Mahogany, and Neutral

## COLONEL Of The Week

The Stirrup Cup salutes Carol Chambers as Colonel of the Week. A senior from Lexington, Kentucky, Carol is majoring in Social Work. She has an overall standing of 2.6.

Carol is a member of Phi Beta Kappa, Mortar Board, Kappa Delta sorority, and the University Mixed Chorus. She is vice-president of the Pitkin Club, secretary of SIKY, and a counselor on the Kentucky committee on Children and Youth for the White House Conference of 1950.

She has served as secretary of the Student Government Association, and the Dutch Lunch Club. Formerly president of Alpha Lambda Delta, Carol is now senior advisor to the group. She has also been a member of Omicron and received the Alpha Gamma Delta Cup for the outstanding Freshman Woman of 1949.

For these achievements the Stirrup Cup is pleased to invite Carol to enjoy any two of its delicious meals.

Now Serving Daily NOON AND EVENING MEALS 11:45 a.m. to 2:00 p.m. 5:00 p.m. to 8:30 p.m.

## STIRRUP CUP RESTAURANT

MAIN ST. AT ASHLAND

### Kaufman's is first to bring you the new After Six formal

featuring **Stain-Shy** the miracle fabric finish

- resists stains • water repellent
- discourages wrinkles

Don't cry over spill drinks. Don't fret about the rain. Most liquids just "roll off" these new dinner jackets without leaving a stain. Ice cube cool, crease resistant rayon cancels the heat, holds its smooth, well pressed lines, and retains its durable water repellent finish even after numerous dry cleanings. Single and double breasted models—whites and pastels.

2950

## KAUFMAN'S

as advertised in Esquire

### BENTON-McGOODWIN TIRE CO.

Phone 4-2377





### UK COACHING CLINIC OPENS TODAY

#### Five Top Coaches Will Instruct Here

By Fred Lawson  
More than 400 high school coaches from Kentucky and 12 other states have registered for the University of Kentucky's annual two-day coaching clinic which opens today and runs through Saturday.

All indications point to the most successful clinic in history. Besides the coaches that have already registered, hundreds more are expected to arrive today from towns within easy driving distance of Lexington. The previous high number of "students" is believed to be approximately 150, who attended the clinic last year.

The annual five clinic, aimed to provide high school coaches with tips on their profession from the most successful in the profession, this year will have an instructional staff composed of five of the outstanding mentors in the country.

Clinic sessions dealing with the cage sport will offer the nation's two top basketball coaches in explanations of the direct offensive styles of play—"fast break" or "control"—for which they have become famous as the leading advocates.

Kentucky's own coach, Adolph Rupp, the famed "Man In The Brown Suit" and basketball coach of the nation-leading Wildcats, is a crafty professor of hardwood tactics who stresses the advantages of the "fast break" system. In 21 years at the Bluegrass school, Rupp's Raiders have compiled an amazing

record of 438 victories and 79 defeats. His Wildcats hold an unequal record of 77 wins against 17 defeats in major tournament competition.

Coach Henry P. (Hank) Iba, head mentor and athletic director of the Oklahoma A & M Angies is best known as the country's leading proponent of the "control" or "slow down" brand of basketball. A veteran of 24 seasons of coaching, he ranks second only to Rupp as the nation's most successful cage coach on the basis of his winning percentage. In the 17 years as basketball coach at the Aggie school, his teams have won 371 games and lost 99. He has produced 10 All-Americans at A & M, most notable of whom was seven-foot Bob Kurland.

Discussions of the three major systems of offense—"split T," "Single-Double Wing," and "T"—will highlight the football section of the clinic with three of the nation's most successful coaches as instructors.

The first is Coach Charles (Bud) Wilkinson, headmaster of the Oklahoma Sooners, who moved to Kentucky in the Sugar Bowl classic, the number one team of 1950, Wilkinson has a lifetime coaching record of 38 wins, three losses and one tie for 526 percent. He is one of the leading advocates of the Split T formation.

Second is H. N. (Rusty) Russell, past head coach at Southern Methodist University. Russell is credited by many observers with much of the Mustangs' success over the past few seasons. He is recognized throughout the country for his ability to design and develop winning

plays confusing to the opposition and pleasing to the fans, based generally on variations of wingback formations.

Third is Coach Paul Bryant, chief mentor of Kentucky's Sugar Bowl champion Wildcats, who ranks as one of the nation's outstanding young college grid coaches. In five seasons at the helm of the Kentucky football machine, the 36-year-old former Alabama star end has lifted the victory-famished Wildcats out of the doldrums of the Southeastern Conference and into the national spotlight. He has taken teams to the Orange and Sugar Bowls in the past two seasons.

Attracted by the national reputation of the guest instructors and the fact that each represents one of the leading proponents of various styles of play and attack, high school coaches have already registered from Kentucky, Ohio, Indiana, Tennessee, West Virginia, Illinois, South Carolina, Pennsylvania, Michigan, Missouri, New Jersey, Arkansas, and Virginia.

Among the coaches expected to take the sessions will be Miss Dee Jenkins, cage coach at Riverside Christian Training School at Lead Creek, Kentucky, a Breathitt county town with a total population of 60 persons.

All demonstrations will be made by members of the University of Kentucky's "winners" of the Southeastern Conference Championships in both football and basketball. The demonstrations will take place on Stoll Field and in Memorial Coliseum. All lectures will be held in the Coliseum.

## Thinlies Meet Marshall Saturday

### Wildcats Defeat University of The South As Bruno Leads Way With Two Victories

By Fred Lawson  
Assistant Sports Editor

Coach Don Seaton's track team meets Marshall College Saturday afternoon at 1:30 on Stoll Field in their first home dual meet of the season.

The Wildcats thinlies will be out to improve their record of one win and one loss. The Cats lost to Vanderbilt but last Saturday they downed Sewanee for their first victory.

Last year the Cats easily downed Marshall, but Coach Seaton has heard reports that they are much stronger this year.

In the meet last week with Sewanee, John Imanski set a new Kentucky record for the 400-yard dash with a time of 45.2 seconds. This was the winning one with the time 42.4.

The event that lost the meet last week was won by the Wildcats this week, Nachand, Bradbury, Wallace, and Rishell, won in the time of 3:35.

Although the Sewanee team lost the meet, two new school records were set.

Dave Wendell's time of 21.9 in the 200-yard dash was a new mark for Sewanee as was a six-foot high jump by Bruce Birch.

The summary:

Shotput — Imanski (K), Gunsten (W), Whitaker (S); 45 feet, one inch.

Javelin — Bruno (K), Wakefield (S), Jenkins (S); 174 feet, nine inches.

High jump — Burch (S), Zeigler (K), Whitaker (K); six feet.

Pole vault — Zeigler (K), Fulton (S), Jenkins (S); 11 feet, four inches.

Discus — Bruno (K), Imanski (K), Whitaker (S); 120 feet, 9 1/2 inches.

Broad jump — Hill (S), Whitaker (K), Seidule (S); 21 feet, 5 1/2 inches.

100-yard dash — Wendel (S), Lawson (K), Burch (S); 10.3.

High hurdles — Critchell (S), Lamb (S), Weeks (K); 15.2.

Half mile — Wallace (K), Nachand (K), Ragland (S); 2:02.2.

220-yard dash — Wendel (S), Rishell (K), Burch (S); 2:19.

Two-mile — Wills (K), Farmer (S), Pilcheg (S); 10:55.5.

Low hurdles — Lamb (S), Weeks (K), Critchell (S); 26.2.

100-yard dash — Wendel (S), Lawson (K), Burch (S); 10.3.

High hurdles — Critchell (S), Lamb (S), Weeks (K); 15.2.

Half mile — Wallace (K), Nachand (K), Ragland (S); 2:02.2.

220-yard dash — Wendel (S), Rishell (K), Burch (S); 2:19.

Two-mile — Wills (K), Farmer (S), Pilcheg (S); 10:55.5.

Low hurdles — Lamb (S), Weeks (K), Critchell (S); 26.2.

100-yard dash — Wendel (S), Lawson (K), Burch (S); 10.3.

High hurdles — Critchell (S), Lamb (S), Weeks (K); 15.2.

Half mile — Wallace (K), Nachand (K), Ragland (S); 2:02.2.

220-yard dash — Wendel (S), Rishell (K), Burch (S); 2:19.

Two-mile — Wills (K), Farmer (S), Pilcheg (S); 10:55.5.

Low hurdles — Lamb (S), Weeks (K), Critchell (S); 26.2.

100-yard dash — Wendel (S), Lawson (K), Burch (S); 10.3.

High hurdles — Critchell (S), Lamb (S), Weeks (K); 15.2.

Half mile — Wallace (K), Nachand (K), Ragland (S); 2:02.2.

220-yard dash — Wendel (S), Rishell (K), Burch (S); 2:19.

Two-mile — Wills (K), Farmer (S), Pilcheg (S); 10:55.5.

Low hurdles — Lamb (S), Weeks (K), Critchell (S); 26.2.

100-yard dash — Wendel (S), Lawson (K), Burch (S); 10.3.

High hurdles — Critchell (S), Lamb (S), Weeks (K); 15.2.

Half mile — Wallace (K), Nachand (K), Ragland (S); 2:02.2.

220-yard dash — Wendel (S), Rishell (K), Burch (S); 2:19.

Two-mile — Wills (K), Farmer (S), Pilcheg (S); 10:55.5.

Low hurdles — Lamb (S), Weeks (K), Critchell (S); 26.2.

100-yard dash — Wendel (S), Lawson (K), Burch (S); 10.3.

High hurdles — Critchell (S), Lamb (S), Weeks (K); 15.2.

Half mile — Wallace (K), Nachand (K), Ragland (S); 2:02.2.

220-yard dash — Wendel (S), Rishell (K), Burch (S); 2:19.

Two-mile — Wills (K), Farmer (S), Pilcheg (S); 10:55.5.

Low hurdles — Lamb (S), Weeks (K), Critchell (S); 26.2.

100-yard dash — Wendel (S), Lawson (K), Burch (S); 10.3.

High hurdles — Critchell (S), Lamb (S), Weeks (K); 15.2.

Half mile — Wallace (K), Nachand (K), Ragland (S); 2:02.2.

220-yard dash — Wendel (S), Rishell (K), Burch (S); 2:19.

Two-mile — Wills (K), Farmer (S), Pilcheg (S); 10:55.5.

Low hurdles — Lamb (S), Weeks (K), Critchell (S); 26.2.

100-yard dash — Wendel (S), Lawson (K), Burch (S); 10.3.

High hurdles — Critchell (S), Lamb (S), Weeks (K); 15.2.

Half mile — Wallace (K), Nachand (K), Ragland (S); 2:02.2.

220-yard dash — Wendel (S), Rishell (K), Burch (S); 2:19.

Two-mile — Wills (K), Farmer (S), Pilcheg (S); 10:55.5.

Low hurdles — Lamb (S), Weeks (K), Critchell (S); 26.2.

100-yard dash — Wendel (S), Lawson (K), Burch (S); 10.3.

High hurdles — Critchell (S), Lamb (S), Weeks (K); 15.2.

Half mile — Wallace (K), Nachand (K), Ragland (S); 2:02.2.

220-yard dash — Wendel (S), Rishell (K), Burch (S); 2:19.

Two-mile — Wills (K), Farmer (S), Pilcheg (S); 10:55.5.

Low hurdles — Lamb (S), Weeks (K), Critchell (S); 26.2.

100-yard dash — Wendel (S), Lawson (K), Burch (S); 10.3.

Shotput — Imanski (K), Gunsten (W), Whitaker (S); 45 feet, one inch.

Javelin — Bruno (K), Wakefield (S), Jenkins (S); 174 feet, nine inches.

High jump — Burch (S), Zeigler (K), Whitaker (K); six feet.

Pole vault — Zeigler (K), Fulton (S), Jenkins (S); 11 feet, four inches.

Discus — Bruno (K), Imanski (K), Whitaker (S); 120 feet, 9 1/2 inches.

Broad jump — Hill (S), Whitaker (K), Seidule (S); 21 feet, 5 1/2 inches.

100-yard dash — Wendel (S), Lawson (K), Burch (S); 10.3.

High hurdles — Critchell (S), Lamb (S), Weeks (K); 15.2.

Half mile — Wallace (K), Nachand (K), Ragland (S); 2:02.2.

220-yard dash — Wendel (S), Rishell (K), Burch (S); 2:19.

Two-mile — Wills (K), Farmer (S), Pilcheg (S); 10:55.5.

Low hurdles — Lamb (S), Weeks (K), Critchell (S); 26.2.

100-yard dash — Wendel (S), Lawson (K), Burch (S); 10.3.

High hurdles — Critchell (S), Lamb (S), Weeks (K); 15.2.

Half mile — Wallace (K), Nachand (K), Ragland (S); 2:02.2.

220-yard dash — Wendel (S), Rishell (K), Burch (S); 2:19.

Two-mile — Wills (K), Farmer (S), Pilcheg (S); 10:55.5.

Low hurdles — Lamb (S), Weeks (K), Critchell (S); 26.2.

100-yard dash — Wendel (S), Lawson (K), Burch (S); 10.3.

High hurdles — Critchell (S), Lamb (S), Weeks (K); 15.2.

Half mile — Wallace (K), Nachand (K), Ragland (S); 2:02.2.

220-yard dash — Wendel (S), Rishell (K), Burch (S); 2:19.

Two-mile — Wills (K), Farmer (S), Pilcheg (S); 10:55.5.

Low hurdles — Lamb (S), Weeks (K), Critchell (S); 26.2.

100-yard dash — Wendel (S), Lawson (K), Burch (S); 10.3.

High hurdles — Critchell (S), Lamb (S), Weeks (K); 15.2.

Half mile — Wallace (K), Nachand (K), Ragland (S); 2:02.2.

220-yard dash — Wendel (S), Rishell (K), Burch (S); 2:19.

Two-mile — Wills (K), Farmer (S), Pilcheg (S); 10:55.5.

Low hurdles — Lamb (S), Weeks (K), Critchell (S); 26.2.

100-yard dash — Wendel (S), Lawson (K), Burch (S); 10.3.

High hurdles — Critchell (S), Lamb (S), Weeks (K); 15.2.

Half mile — Wallace (K), Nachand (K), Ragland (S); 2:02.2.

220-yard dash — Wendel (S), Rishell (K), Burch (S); 2:19.

Two-mile — Wills (K), Farmer (S), Pilcheg (S); 10:55.5.

Low hurdles — Lamb (S), Weeks (K), Critchell (S); 26.2.

100-yard dash — Wendel (S), Lawson (K), Burch (S); 10.3.

High hurdles — Critchell (S), Lamb (S), Weeks (K); 15.2.

Half mile — Wallace (K), Nachand (K), Ragland (S); 2:02.2.

220-yard dash — Wendel (S), Rishell (K), Burch (S); 2:19.

Two-mile — Wills (K), Farmer (S), Pilcheg (S); 10:55.5.

Low hurdles — Lamb (S), Weeks (K), Critchell (S); 26.2.

100-yard dash — Wendel (S), Lawson (K), Burch (S); 10.3.

High hurdles — Critchell (S), Lamb (S), Weeks (K); 15.2.

Half mile — Wallace (K), Nachand (K), Ragland (S); 2:02.2.

220-yard dash — Wendel (S), Rishell (K), Burch (S); 2:19.

Two-mile — Wills (K), Farmer (S), Pilcheg (S); 10:55.5.

Low hurdles — Lamb (S), Weeks (K), Critchell (S); 26.2.

100-yard dash — Wendel (S), Lawson (K), Burch (S); 10.3.

High hurdles — Critchell (S), Lamb (S), Weeks (K); 15.2.

Half mile — Wallace (K), Nachand (K), Ragland (S); 2:02.2.

220-yard dash — Wendel (S), Rishell (K), Burch (S); 2:19.

Two-mile — Wills (K), Farmer (S), Pilcheg (S); 10:55.5.

Low hurdles — Lamb (S), Weeks (K), Critchell (S); 26.2.

100-yard dash — Wendel (S), Lawson (K), Burch (S); 10.3.

High hurdles — Critchell (S), Lamb (S), Weeks (K); 15.2.

Half mile — Wallace (K), Nachand (K), Ragland (S); 2:02.2.

220-yard dash — Wendel (S), Rishell (K), Burch (S); 2:19.

Two-mile — Wills (K), Farmer (S), Pilcheg (S); 10:55.5.

Low hurdles — Lamb (S), Weeks (K), Critchell (S); 26.2.

100-yard dash — Wendel (S), Lawson (K), Burch (S); 10.3.

High hurdles — Critchell (S), Lamb (S), Weeks (K); 15.2.

**For The Best**  
in Fountain Service  
Sandwiches  
and  
Short Orders

Come To  
**SCOTTIES**  
Formerly Tutties  
Parking In Rear  
919 South Lime

**SPRING SPECIAL**

Change Oil	1.80
Lubrication	1.00
Pack Front Wheels	1.15
	3.95

REGULAR PRICE 4.50  
Special Price **3.95**  
at  
**L. R. Cooke Chevrolet**  
180 E. High Dial 2-5166 328 E. Vine

### Kentucky Linksmen Will Meet Western At Boiling Springs Course Saturday

Coach Johnny Owens' six golfers play their first match of the week here Saturday when they take on the linksmen from Western on the Boiling Springs course.

### Discarded Clothing Needed For Children

Members of the YWCA Cabinet are collecting used and discarded clothing for a family of 14 motherless children. The case was brought to the attention of Dean Sarah B. Holmes through a letter from a neighbor of the family.

### Netters Meet Vandy Monday

Kentucky's tennis team will meet Vanderbilt here Monday afternoon in the last home match this month. The Cats will try to get back in the win column after dropping two matches to Conference foes over the weekend.

Last Saturday in Atlanta the Wildcats 7-0. Tech made a clean sweep of the match as they won five singles and two doubles matches. Friday afternoon the Tennessee Volunteers also defeated the Wildcats in Knoxville.

### Shirts Finished TO YOUR ORDER

Medium — Heavy  
or  
Without Starch

15 Per Cent Discount  
Cash and Carry

**De BOOR**  
opposite stadium  
Laundry Cleaning

### Netters Meet Vandy Monday

Kentucky's tennis team will meet Vanderbilt here Monday afternoon in the last home match this month. The Cats will try to get back in the win column after dropping two matches to Conference foes over the weekend.

Last Saturday in Atlanta the Wildcats 7-0. Tech made a clean sweep of the match as they won five singles and two doubles matches. Friday afternoon the Tennessee Volunteers also defeated the Wildcats in Knoxville.

### Shirts Finished TO YOUR ORDER

Medium — Heavy  
or  
Without Starch

15 Per Cent Discount  
Cash and Carry

**De BOOR**  
opposite stadium  
Laundry Cleaning

### CINCINNATI WALLOPS WILDCATS

Counted for three more runs in the same inning. The Cats added two tallies in the third on infield hits by Fucci and Harry Jones and a single to center by Larry Jones.

All told, the Wildcats garnered 18 hits off three Centre pitchers. Leigh Bush was touched for 13 hits in five frames and was charged with the loss for Centre. Tom Gross came in the sixth, pitched two innings and gave up two more safeties.

### Netters Meet Vandy Monday

Kentucky's tennis team will meet Vanderbilt here Monday afternoon in the last home match this month. The Cats will try to get back in the win column after dropping two matches to Conference foes over the weekend.

Last Saturday in Atlanta the Wildcats 7-0. Tech made a clean sweep of the match as they won five singles and two doubles matches. Friday afternoon the Tennessee Volunteers also defeated the Wildcats in Knoxville.

### Shirts Finished TO YOUR ORDER

Medium — Heavy  
or  
Without Starch

15 Per Cent Discount  
Cash and Carry

**De BOOR**  
opposite stadium  
Laundry Cleaning

### Netters Meet Vandy Monday

Kentucky's tennis team will meet Vanderbilt here Monday afternoon in the last home match this month. The Cats will try to get back in the win column after dropping two matches to Conference foes over the weekend.

Last Saturday in Atlanta the Wildcats 7-0. Tech made a clean sweep of the match as they won five singles and two doubles matches. Friday afternoon the Tennessee Volunteers also defeated the Wildcats in Knoxville.

### Shirts Finished TO YOUR ORDER

Medium — Heavy  
or  
Without Starch

15 Per Cent Discount  
Cash and Carry

**De BOOR**  
opposite stadium  
Laundry Cleaning

### Netters Meet Vandy Monday

Kentucky's tennis team will meet Vanderbilt here Monday afternoon in the last home match this month. The Cats will try to get back in the win column after dropping two matches to Conference foes over the weekend.

Last Saturday in Atlanta the Wildcats 7-0. Tech made a clean sweep of the match as they won five singles and two doubles matches. Friday afternoon the Tennessee Volunteers also defeated the Wildcats in Knoxville.

### Shirts Finished TO YOUR ORDER

Medium — Heavy  
or  
Without Starch

15 Per Cent Discount  
Cash and Carry

**De BOOR**  
opposite stadium  
Laundry Cleaning

**BELIEVE IN YOURSELF!**

Don't test one brand alone  
...compare them all!

Unlike others, we never ask you to test our brand alone. We say... compare PHILIP MORRIS... match PHILIP MORRIS... judge PHILIP MORRIS against any other cigarette!

Then make your own choice!

**TRY THIS TEST!**

Take a PHILIP MORRIS — and any other cigarette. Then, here's all you do:

- 1 Light up either cigarette. Take a puff—don't inhale—and s-l-o-w-l-y let the smoke come through your nose.
- 2 Now do exactly the same thing with the other cigarette.

NOTICE THAT PHILIP MORRIS IS DEFINITELY LESS IRRITATING, DEFINITELY MILDER!

Remember...  
**NO CIGARETTE HANGOVER**  
means  
MORE SMOKING PLEASURE!

CALL FOR PHILIP MORRIS

**BEN ALI**  
DIAL 4-4570  
—TODAY-SAT—  
"Soldiers Three"  
"Painted Hills"  
STARTS SUNDAY!  
**BAFFLING!**  
WHAT IS IT?  
HOWARD HAWKS  
Production  
**THE THING**  
from another world  
**KENTUCKY**

### Winchester Wins Debate

For the fourth consecutive time Winchester High School has carried off the annual state high school debate tournament title. The champs defeated Stamping Ground in the finals last week.

Finalists for the two schools were Jim Singer and Lester Wise on the affirmative for Stamping Ground and Bill Hillier and Mary Ann Oden on the negative for Winchester.

Prof. Louis Clifton, director of UK Extension, announced yesterday that 27 contestants in the festival have won superior ratings—and an additional 85 students have received excellent ratings for their performance in the early events which included oratorical declamation, interpretative reading, radio speaking, poetry reading, and public speaking.

### Engineers To Take Training Exams

An engineering training examination, sponsored by the State Board of Registration for Professional Engineers, will be given for senior engineering students Tuesday, May 8, in Room 204 of the Engineering Building.

Applications for this test may be obtained in Prof. C. E. Croase's office and must be submitted by Wednesday, May 2.

The examination will begin at 8 a.m. and end at 5 p.m. with an hour, 12-1 p.m., for lunch. Examinees will need pencils, two small triangles, a small scale and a slide rule. All paper will be furnished. Students are not to bring books or paper with them. (2)

### Penrod At Meeting

Prof. E. B. Penrod of the College of Engineering will attend the meeting of the Kentucky Academy of Science, which will attend the opening meeting of that organization at Morehead State College, Morehead, today and tomorrow.

### Lexington Yellow Cab Co.

Ph. 2-2230

A THINKING FELLOW CALLS A YELLOW Dev or Night



**THIS WEEK'S SPECIAL**  
BONAT FLO THRU COLD WAVE

If your hair isn't becoming to you, You should be coming to us.

Regular 10.00 **650**

GOLDA DOOLIN'S BEAUTY SHOP

"Open Evenings by Appointment"

915 S. Lime ... In The New So. Lime Post Office Bldg. ... Dial 3-1498

### YOU CAN EARN \$1,000 THIS SUMMER

Here's your opportunity for pleasant summer work with excellent earnings. Work as assistant to your home state director of a Marshall Field owned company. See: Mr. Gibson, Room 128, Kentucky Union, Thursday and Friday, May 3 and 4 from 9 a.m. to 5 p.m.

## —SENIORS—

### 29 Class Rings In Stock

Immediate Delivery

### CAPS and GOWNS—Large Class Get Yours NOW

Senior Invitations — French Fold and Leather

• Orders Taken for Calling Cards •  
Until May 1st

## Campus Book Store



PHI BETA KAPPA initiated 11 new members preceding their annual banquet in the SUB Monday night. Front row, left to right: Carol Chambers, Shirley Farmer, Helen Smith, Marietta Georgiados, Kathryn Whitmer, and Ann Perrine. In the back row, same order, are Woodridge Spears, David Lewis, Edward Colman, William Spillman, and Eurie E. Wheeler.

### Faculty Personals

**PRESIDENT HERMAN L. DONOVAN** will attend the annual meeting of the National Association of State Universities in Chicago on April 29 to May 1.

**DEAN SARAH B. HOLMES** has been appointed by the National Association of Deans of Women to attend the National Conference on College Fraternities and Societies on Sunday in Columbus, Ohio. On Saturday Dean Holmes will be one of the representatives at the Interfraternity Research and Advisory Council, also meeting in Columbus.

**MISS JACQUELINE BULL**, archivist at Margaret I. King Library, was the speaker at the April meeting of the Business Women of the First Presbyterian Church, April 16. Her topic was "A Glimpse of Lexington One Hundred Years Ago."

The talk was based on church records in the Archives of the UK Library.

**MRS. JEAN ANN DONNELLY**, graduate student in bacteriology, in conjunction with **DR. JAMES C. HUSPHERS**, associate professor of bacteriology, will present a paper on the killing action of guinea pig serum on non-concoagulated strains of Klebsiella pneumoniae to the American Association of Immunologists in Cleveland on May 2.

**DR. MORRIS SCHERAGO**, head of the Bacteriology Department, will attend the meetings of the Federation of American Society for Experimental Biologists in Cleveland, April 29-May 3.

**DR. STANLEY ERIKSON**, head of the Department of Home Economics of UK, will lead a panel discussion today at the 17th annual meeting of the Kentucky Dietetic Association in Louisville.

The discussion will center around what is happening in Kentucky in the state's welfare institutions, and the tuberculosis program.

The conference is scheduled for today and tomorrow at the Brown Hotel.

**MISS ELIZABETH HELTON**, UK professor of home economics, will preside at the Saturday luncheon meeting when Dr. Erikson will lead a discussion group on "Professional Education."

Other University faculty members attending the meeting will be **MISS RUTH BOYDEN** and **MRS. ANNE CLEMMONS**.

**DR. LAWRENCE S. THOMPSON**, director of University Libraries, has been elected secretary of the Southern Humanities Conference, a group affiliated with the American Council of Learned Societies and consisting of the leading humanistic organizations in the South.

Dr. Thompson is also the author of an article on the "History of Measurement of Library Service" in the Library Quarterly for April, 1951.

**MR. FRANK FREINDL**, director of the University Concert Band, will preside at the finals of the State Chess Tournament on Saturday, May 3, 4, and 5, he will direct and adjudicate the All-State Band of West Virginia at Huntington.

**DEAN CECIL C. CARPENTER** of the College of Commerce is attending a meeting of the American Association of Collegiate Schools of Business at Savannah, Georgia, April 26-29.

**DR. A. W. GOODMAN** of the Mathematics Department has been appointed one of the associate editors of the "Proceedings of the American Mathematical Society."

### Former Prof To Visit Here

Col. Thomas H. Hahn, assistant director of communications, Headquarters Caribbean Command, and former associate professor of Physics at UK, will soon visit his son, Dr. Thomas H. Hahn Jr., who is now himself a UK associate professor of physics.

Col. Hahn recently received orders transferring him to the White Sands Proving Ground, Las Cruces, N. M. He plans to leave his present station in Panama at an early date and will be accompanied by his family.

Before assuming his new duties, however, Col. Hahn will visit his son in Lexington, friends in Washington and New York, and Mrs. Hahn's brother who is an employee of the Patuxent River Naval Air Station, Maryland.

Col. Hahn is well known in the Canal Zone for his amateur radio activities and his call sign KZ2UT is familiar to many radio operators all over the Americas.

Prior to going to the Canal Zone, Col. Hahn served as liaison officer for the Signal Corps Engineering Laboratories at the Naval Reserve Laboratory in Washington. He arrived in Panama in November, 1948.

Prior to joining the Army, Col. Hahn was associate professor of physics at UK. He holds a doctor's degree in physics from the University of Chicago.

During the war he was assigned to the Supreme Headquarters Allied Expeditionary Force in Europe. For this he received the Bronze Star Medal.

### Secretarial Jobs Available

Several full-time secretarial positions on campus and in town are now available. Qualifications for the positions are typing and shorthand. Interested students may apply at the Dean of Women's Office.

### 112 ROTC Cadets To Attend Camp

One hundred and twelve UK Infantry ROTC cadets will report to a six weeks summer camp at Fort Campbell, on June 18. The camp is designed to develop leadership and to increase technical knowledge.

Four regular Army instructors at UK will accompany the cadets to the camp. Major S. W. Howell will be public information officer for the camp. Capt. J. C. Boleyn will be assistant special service officer; and M-Sgt. S. J. Foster and Sgt. Ina Chas. M. E. Seely will be cadet instructors.

ROTC cadets from Kent State University, Ohio University, University of Akron, University of Dayton, University of Toledo, Western Kentucky State College, and Wilberforce University will also attend the summer camp.

### Hillel Group To Elect

Hillel Foundation will elect officers at their supper meeting at 6 p.m. Sunday at Temple Adath Israel, N. Ashland Ave. A full-length movie on Israel will be shown.

Young Men's Furnishing's

Trousers \$9 to \$18

In Convenient Chevy Chase

So. Ashland at Euclid

THE TOPS IN TUNES

LOVELIEST NIGHT OF THE YEAR

Maria Lanza

HOT CANARY

Jan Garber

NEVER BEEN KISSED

Freddy Martin

DOWN THE TRAIN OF ACHING HEARTS

Patricia Page

Barney Miller

Where Radio and Television Is A Business — Not A Sideshow

Home Cooked Food

Noon Day Lunch

Meat

2 Vegetables

Salad

Desert

Drink

75c

at

Comer's Restaurant

South Broadway

LOOK to COOKE for the best in USED CARS and TRUCKS

L. R. Cooke Chevrolet

180 E. High Dial 2-5166 328 E. Viro

LIKE THOUSANDS OF AMERICA'S STUDENTS— MAKE THIS MILDNESS TEST YOURSELF AND GET

## WHAT EVERY SMOKER WANTS

PHOTOS TAKEN ON CAMPUS

JOE BENDAVID RUTGERS '54

DAN COURTNEY COLO. A & M '52

COLLEEN MURLEY WHITMAN COLLEGE '52

OPEN 'EM

SMELL 'EM

SMOKE 'EM

LEADING SELLER IN AMERICA'S COLLEGES

## MILDNESS

Plus NO UNPLEASANT AFTER-TASTE

OVER 1500 PROMINENT TOBACCO GROWERS SAY: "When I apply the standard tobacco growers' test to cigarettes I find Chesterfield is the one that smells milder and smokes milder."

A WELL-KNOWN INDUSTRIAL RESEARCH ORGANIZATION REPORTS: "Chesterfield is the only cigarette in which members of our taste panel found no unpleasant after-taste."

## ALWAYS BUY CHESTERFIELD