

COPY
University Archives
Margaret I. King Library - North
University of Kentucky
Lexington, Kentucky 40506

KENTUCKY VS AUBURN



STOLL FIELD

• OCTOBER 1, 1966

• OFFICIAL PROGRAM

• 50c Est. Price .48
Tax02

EXCLUSIVELY
Dawahare's

- LEXINGTON
- WHITESBURG
- PIKEVILLE
- HAZARD
- NEON
- CORBIN

Gardenside Plaza



PLENTY FREE PARKING

STORE HOURS—10 a.m. 'til 9 p.m.
Monday thru Saturday

First National Charge
30 Day Charge—
6 Month Revolving Charge



Also available at Dawahare's
WILDCAT BOOSTER TIES
Pure Silk



... PURCELL'S, Central Kentucky's
Headquarters For Fine Quality Shoes



The "WILDCAT"

by **WINTHROP** 
SHOES FOR MEN

13⁰⁰
pr.

- Black Slip-on
- Black Oxford
- Brown Oxford
- Sizes 6½-12, B to D

NUN & BUSH
Hush Puppies
Town & Country Shoes

Choose from the Famous
Brands, plus many others



Edgerton
SHOES FOR MEN



Capesio
DEBUTANTE
Beautiful Shoes

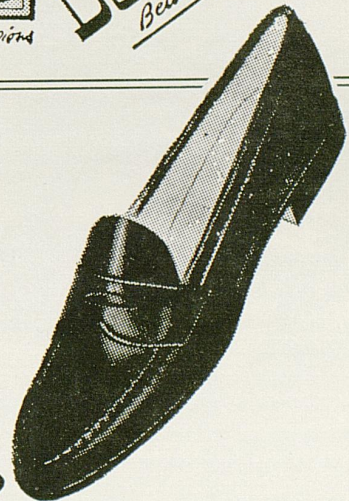
Evans
Coach & Four

The "KITTEN"

by
SPALDING

14⁰⁰
pr.

- Black
- Brown
- 4½ To 10
- AAAA To B



Purcell's

CENTRAL KENTUCKY'S SMARTEST STORE SINCE 1887
SHOE CENTER — MAIN FLOOR

OFFICIAL WATCH FOR THIS GAME



LONGINES THE WORLD'S MOST HONORED WATCH

10 WORLD'S FAIR
GRAND PRIZES
28 GOLD MEDALS



Longines watches are
recognized as **OFFICIAL**
for timing world
championships and Olympic
sports in all fields
throughout the world.



Longines 5-Star Admiral Automatic with Calendar,
All-Proof®, sweep-second, 14K gold strap—\$185.00

The Longines Credo

Every Longines watch,
whatever its type, for whatever
its use, today, as for almost
a century, is manufactured to
be the finest of its kind and
worthy in every respect to be called
The World's Most Honored Watch

LONGINES-WITNAUER WATCH CO.
MONTREAL • NEW YORK • GENEVA
Maker of Watches of the Highest Character Since 1867

OFFICIAL UK FOOTBALL PROGRAM

CONTENTS

	Page
Game Story	5
Governor Breathitt	6
UK Cheerleaders	8
President Oswald	9
Kentucky All-Americans	10
Athletics At Kentucky	11
Athletics Director Shively	12
Varsity Schedule and Scores	14
Coaching Staff	15
Head Coach Bradshaw	16
Kentucky Player Pictures	18, 22, 26, 30, 34, 38
Auburn Player Pictures	20, 33
Statistically Speaking	24
Rosters	28
Lineups	Center Spread
Depth Chart	29
Auburn Administration	37
The ABC's of TV	40
What Opponents Are Doing	42
Meet The Kittens	43
Southeastern Conference Schedule	44
Quarterback-Tipoff Club	46
Mystery Wildcats	47
Preview of Coming Attractions	47
Band	49
Wildcat Coaches—Athletics Staff	50
Development Council	52-53
Kentucky Basketball	54

OFFICIAL 1966 SOUVENIR FOOTBALL PROGRAM

Published by U.K. Athletics Association
Bernie A. Shively, Director of Athletics
Edited by Ken Kuhn
Director of Sports Information

Represented for National Advertising by
Spencer Advertising, Inc.
271 Madison Avenue, New York, N. Y.

Wildcat Gridiron News

KENTUCKY vs. AUBURN

Two of the Southeastern Conference's most stubborn contenders—Kentucky's Wildcats and the Tigers of Auburn—clash on the Stoll Field gridiron tonight in a fight to determine which has the best chance to overcome problems and jump back into the thick of the loop championship chase.

Both teams show identical, 1-1 records after taking their openers two weeks ago and then running into fired-up powerhouses last Saturday. The blemishes were inflicted by top contenders Tennessee (28-0 over Auburn) and Ole Miss (17-0 revenge victors over UK).

Despite the whitewashing, Kentucky and Auburn showed strong capabilities that should come to the forefront this week in the toss-up match.

For their part, the Wildcats of Coach Charlie Bradshaw have displayed defensive prowess in their opening two engagements. In rolling over Atlantic Coast Conference favorite North Carolina, Kentucky defenders limited the Tar Heels to just 183 yards in total offense while Mississippi's strong Rebels were able to pad the total by only 80 more yards. In the second half alone of the Ole Miss encounter, UK's proud defensive platoon rose up to halt Rebel drives inside the 20-yard line four times and on another occasion forced a field goal from the 23.

Auburn found a quarterback, sophomore Larry Blakeney, in their opener with Chattanooga as he sailed 10 strikes in 17 attempts for 231 yards. And fears over the physical fitness

of star fullback Tom Bryan disappeared in the closing minutes of the Chattanooga game he came in to spark the bogged-down offense.

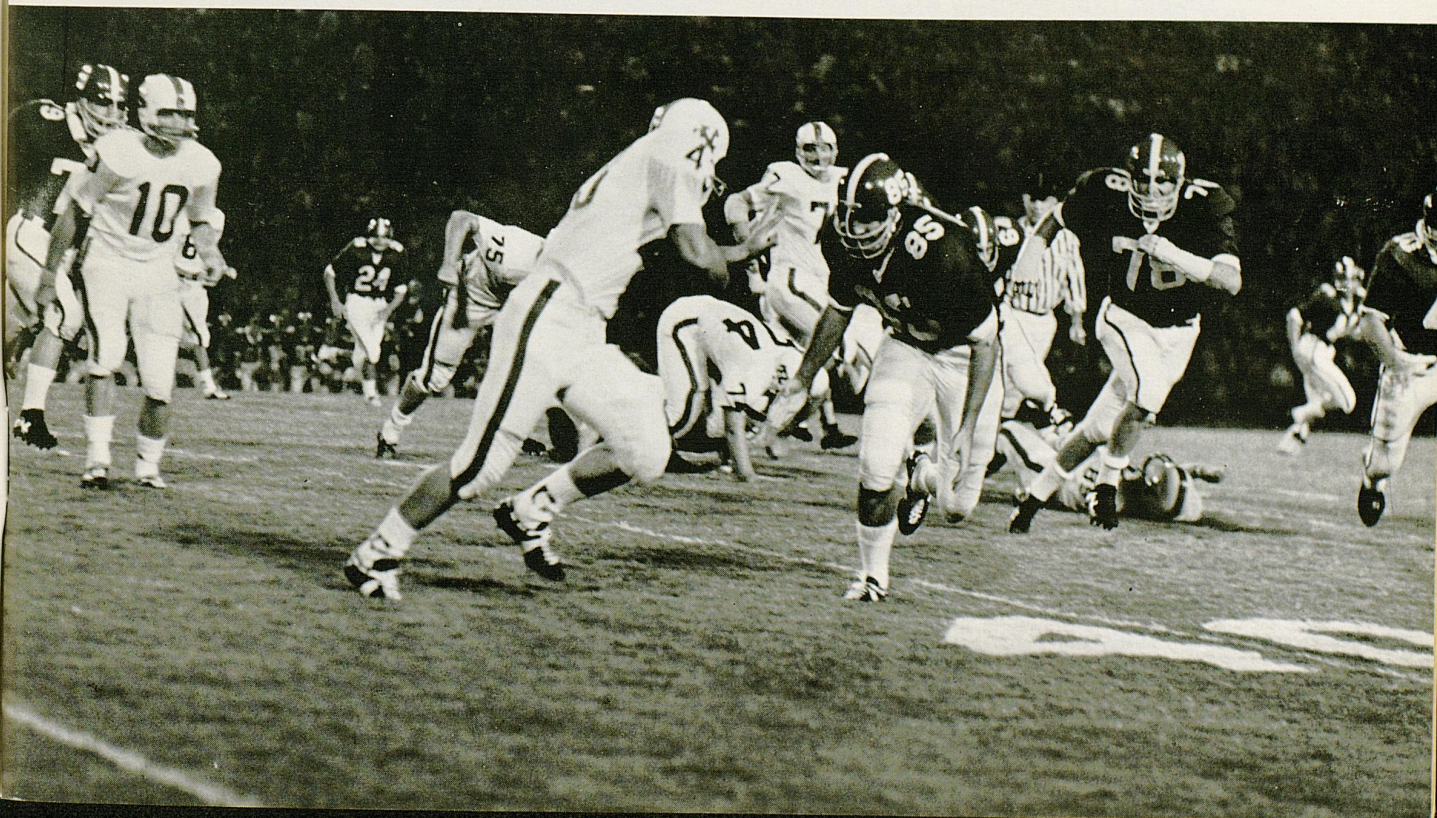
A common problem seems to take precedence in both clubs' preparations for tonight's game and the remainder of the schedule. That is passing. Auburn dented the Tennessee secondary defense for only 23 yards on two completions out of 13 tries while Kentucky, in two games, has managed to connect on just five of 29 tosses to gain 63 yards in comparison to 343 via the ground.

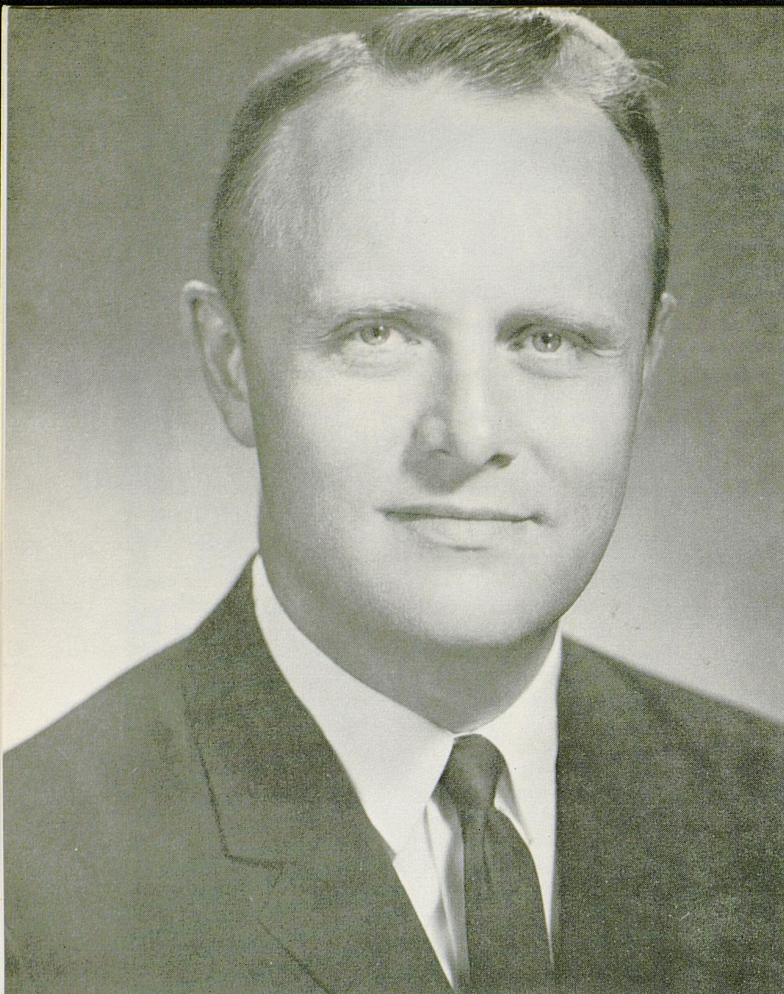
The chances of Kentucky materially improving its aerial record are clouded by the injury to starting quarterback Terry Beadles, who suffered an ankle injury in the first half of the Ole Miss game.

The Kentucky-Auburn series dates from a game played in Lexington in 1934 and copped by the Wildcats, 9-0. After a return match at Montgomery, Ala., the following year (won by Auburn, 23-0), relations were broken off and not resumed for nearly two decades. Kentucky captured the next game at Lexington in 1954 and the two schools have met annually since that time. Auburn, with a 23-18 win last season at Auburn, boosted its series lead to nine wins to Kentucky's four and one tie.

With but two exceptions, the meetings have followed a trend to closeness in final score. Breaking the pattern were a 33-0 win in 1959 by Coach Shug Jordan's crew and Kentucky's 20-0 gift to Coach Charlie Bradshaw in 1964. Auburn holds a 4-3 advantage in games played at Lexington.

COLLISION COURSE—North Carolina fullback Mark Mazza (43) looks for running room around end after receiving a handoff from quarterback Danny Talbott (10) but appears headed for trouble from a trio of Kentucky flank defenders. Coming up fast on a collision course are Jim Swart (85), Basil Mullins (78) and Mike McGraw (40). Sparked by such sterling defensive play, Kentucky won the season opener, 10-0.





the honorable
EDWARD T. BREATHITT

Governor of Kentucky

Alumnus Governor Boosts Wildcat Gridders . . .

Edward T. Breathitt, at 41, is the nation's second youngest Governor. A Hopkinsville attorney, he continues a family record of distinguished public service that dates back to pre-Civil War days when an ancestor, John Breathitt, served as the state's chief executive.

Governor Breathitt, who in his capacity as Governor, also serves as chairman of the University of Kentucky Board of Trustees, began his career as a lawyer and public servant immediately upon graduation from the University of Kentucky College of Law in 1950. At the age of 27, he was elected to the State House of Representatives. Later he was State Personnel Commissioner and a member of the State Public Service Commission before being elected to Kentucky's highest office in 1963.

While a student at the University of Kentucky, where he also obtained a degree in Commerce, he proved his capacity for leadership. While there, he was president of Lamp and Cross, senior men's honorary, and ODK, men's leadership and scholarship honorary fraternity.

His distinguished background also includes three years in the Army Air Force during World War II and the state presidency of the Young Democratic Clubs of Kentucky.

A native of Hopkinsville, he is married to the former Frances Holleman of Mayfield. They have four children—Mary Fran, who is 16; Linda, 15; Susan, 9; and Edward III, who is 7.

Governor Breathitt continues to be one of the most enthusiastic boosters of his Alma Mater and its football team.



CHEER FOR MILK'S VITALITY

Put Vitality on your team... drink milk! A glass of cool, refreshing milk with meals and snacks helps see you through the busiest fall schedule. No other beverage helps you get the lasting energy found only in nature's Vitality drink... Milk. You'll cheer for milk's Vitality.

a message from dairy farmer members of



american
dairy
association

KENTUCKY CHEERLEADERS



LEFT TO RIGHT—Nancy Coffman, Zuzanne Ziegler, Pam Robinson, Mary Frances Wright, Tom Sweet, Gwynne Deal, Winnie Jo Perry, Suzanne Huffines, Jean Allen Lankford, Bonnie Breault.

Cheer For The Wildcats

TWO BITS

Two bits, four bits,
Six bits, a dollar.
All for Kentucky,
Stand up and holler!
(then really give a
Wildcat yell!)

SPLIT 'EM UP

Give 'em the Blue, Blue,
Blue Blue Blue.
Give 'em the White, White,
White White White.
Give 'em the Blue, White,
Blue, White,
Yea Kentucky,
Fight, FIGHT

WILDCATS

W-I-L-D-C-A-T-S
Go-o-o-o Wildcats!

GO CATS GO

Go Cats go, Go Cats go.
Go Cats, Go Cats,
Go Go Go!

GIVE ME A C

Give me a C (pause) C
Give me an A (pause) A
Give me an T (pause) T
Give me an S (pause) S
Go-o-o-o CATS!

KENTUCKY

K-E-N-T-U-C-K-Y
Go-o-o-o Kentucky!
(be proud—yell loud)

GO WILD CATS

Go Wild Cats, Go Wild.
Go Wild Cats, Go Wild.
Go Wild Cats, Go Wild.
Cats Go Wild!

CHANTS

Go Cats Go! (repeat)
Rip 'Em Up, Tear 'Em Up,
Give Them Hell, Wildcats!
Go (clap clap) (repeat)
Get That Ball! (repeat)
Make That Kick! (repeat)
Block That Kick! (repeat)



JOHN W. OSWALD
President
University of Kentucky



University's President Knows Value of An Athletic Program . . .

When Dr. John W. Oswald became the sixth president of the University of Kentucky on Sept. 1, 1963, he brought to the position most unique qualifications that have since aided immeasurably in his administration of one of the nation's foremost and fastest-growing educational institutions.

John Oswald's background reflects the highest standard of excellence in educational preparation and also includes experience in athletics at both the player and coach levels.

The 49-year-old educator, who was born in St. Paul, Minnesota, received his education in the public schools of La Grange, Ill., and at DePauw University where he was a Phi Beta Kappa graduate in 1938. He also did graduate work on the Davis and Berkeley campuses of the University of California, receiving the Ph.D. Degree in plant pathology in 1942.

Following a World War II stint in the Navy as a PT boat captain and division commander, he returned to UC as a professor in his special field

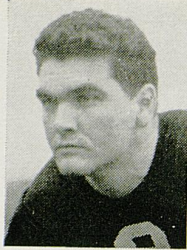
and later rose through the administrative ranks to the position of Vice-President for Administration.

Dr. Oswald's athletic experience, that now stands him in good stead as president of a university boasting an ambitious athletic program, came as a player in his collegiate days at De Pauw as he played guard on the football team for three years and later at California's Davis campus—where he tried his hand at coaching (by avocation) the grid team for a brief period.

In 1962, he was named by Sports Illustrated on its Silver Anniversary All-America team, composed of former football players who achieved special prominence in their chosen professions.

Dr. Oswald is a staunch supporter of Kentucky's athletic teams and advocates a fair-minded approach that lends proper emphasis to the athletic program. UK athletics flourish within the proper perspective as an equal part of the total university.

KENTUCKY ALL-AMERICANS



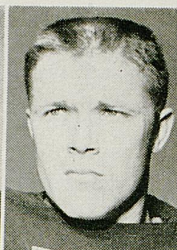
CLYDE
JOHNSON
Tackle—1942



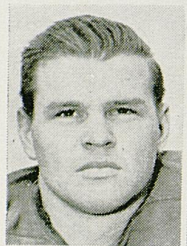
BOB
GAIN
Tackle—1949-50



VITO
PARILLI
QB—1950-51



DOUG
MOSELEY
Center—1951



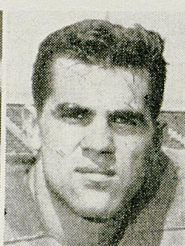
STEVE
MEILINGER
E-QB-HB—1952-53



RAY
CORRELL
Guard—1953



HOWARD
SCHNELLENBERGER
End—1955



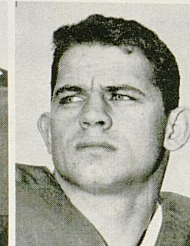
LOU
MICHAELS
Tackle—1956-57



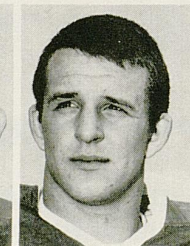
IRV GOODE
Center—1961



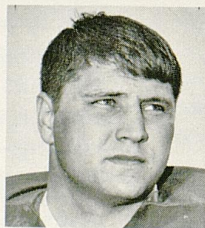
HERSCHEL
TURNER
Tackle—1963



RODGER
BIRD
Tailback—1965



RICK
NORTON
Quarterback—1965



SAM BALL
Tackle—1965

— Athletics At Kentucky —

Kentucky's athletic program, a well-balanced and ambitious activity featuring inter-collegiate competition in ten different sports, is organized under the Department of Athletics and a corporation known as the University of Kentucky Athletics Association.

The program is conducted without overemphasis or sacrifice of educational objectives and in strict compliance with the rules of the University, the Southeastern Conference and the National Collegiate Athletic Association.

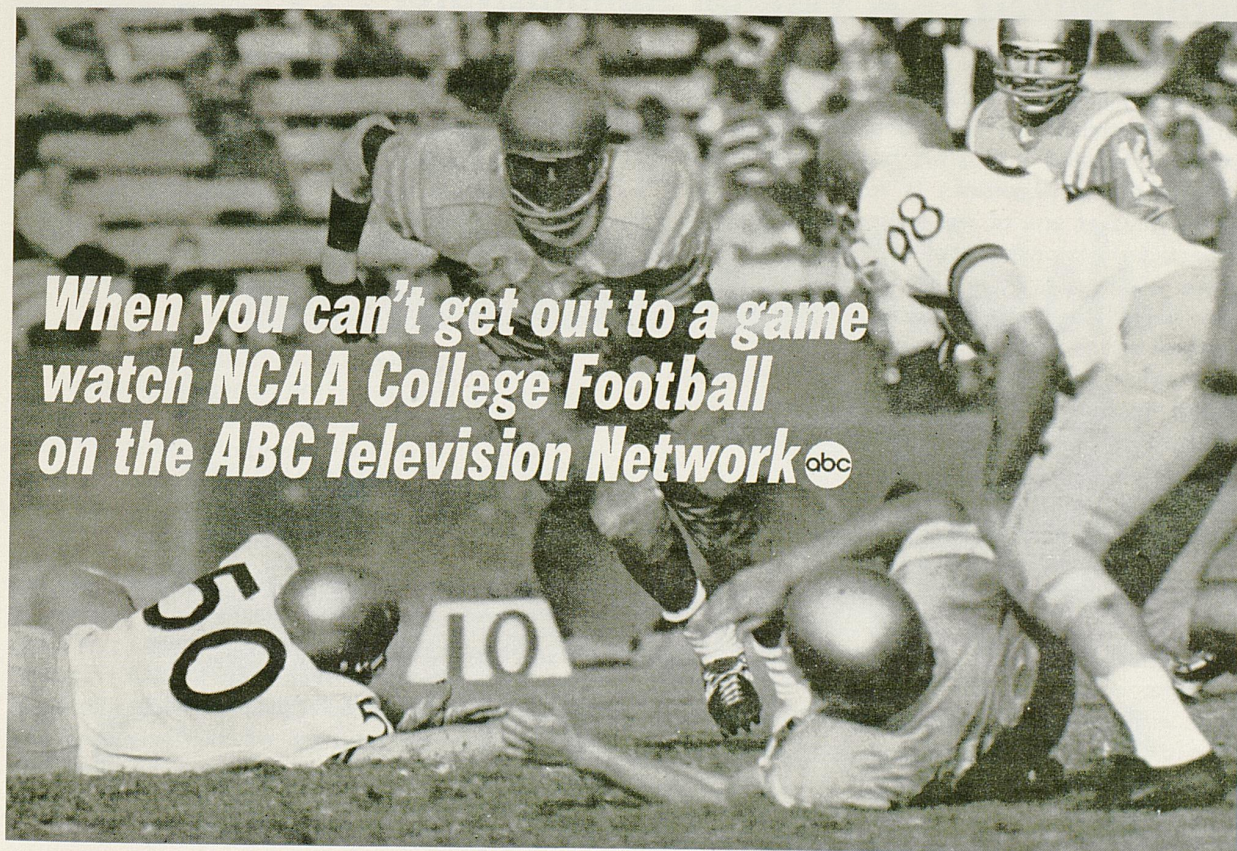
A board of directors, headed by University President John W. Oswald in the capacity of chairman, maintains overall policy supervision of the athletic program. Ex-officio members, in addition to the president, include Vice Presidents Robert Johnson and Glen Creech, Dr. W. L. Matthews in the capacity of secretary to the board, and a student representative—all appointed by the president. Twelve other men, drawn from the University faculty and the general public, also serve on the board as appointees of the president.


Supervising the steady growth and balanced

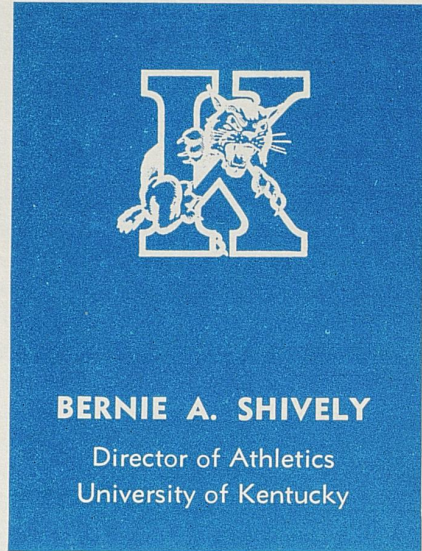
development of one of the nation's top athletic programs is Bernie A. Shively, a former Illinois grid All-American and a veteran of over 25 years in the post of Director of Athletics.

The Association's Board of Directors is composed of the following:

Dr. John W. Oswald, Chairman
Robert Johnson, Vice Chairman
Dr. W. L. Matthews, Jr., Secretary
Dr. Ralph Angelucci
Prof. David Blythe
Dr. Aubrey Brown
Dr. Loren Carlson
Dr. Thomas Clark
Dr. Glen Creech
Dr. John Douglas
Dr. Lyman Ginger
Dr. A. D. Kirwan
Carson Porter (Student)
Douglas Parrish
James H. Pence
Dr. Douglas Schwartz
Floyd Wright



**When you can't get out to a game
watch NCAA College Football
on the ABC Television Network **



Bernie Shively — A Veteran Administrator . . .

Behind every successful athletic program in the country today is a capable administrator who diligently attends the many and varied responsibilities connected with a big business operation.

University of Kentucky is fortunate to have the services of one of the nation's most widely-respected Directors of Athletics in the person of Bernie A. Shively. A veteran of 28 years on the job, "Shive" (as he is familiarly known to thousands of sports fans) is a tall, silver-haired, former football All-American who has gained widespread respect and recognition for his fair-minded guidance of a harmonious program that today features September to June activity in 10 different sports and involves the use of facilities valued at several million dollars.

In addition to a fair-minded policy direction that has resulted in "big time" stature for the school's athletic teams, Shively during his 28-year tenure has directly supervised major expansions in the physical plant designed to keep pace with the growing patronage by a sports-minded public. Among these have been the doubling of the seating capacity of Stoll Field, construction of a four-million-dollar coliseum and preparation of a spacious sports center to

provide top facilities for spring sports teams and football practice.

Shively's first claim to fame came during undergraduate days at University of Illinois as he achieved All-America recognition as a guard on the 1926 grid team made famous by teammate Red Grange. The future UK Athletic Director also won the Big 10 heavyweight wrestling title and lettered in track.

Following graduation in 1927, he accepted a position at UK as a line coach in football to start a long-time association. In the days since, he has served as head football coach for one year (1945), track and baseball coach and headed the physical education department.

Shively also has found time to be active in civic and alumni affairs and has attained national prominence through dedicated service in national athletic organizations. He currently holds membership in the powerful NCAA Executive Committee. Only recently, he completed a second term as chairman of the University Division NCAA Basketball Tournament Committee and formerly served with the NCAA Summer Baseball group.



A sure winner
for convenient
banking


Central
BANK & TRUST CO.

SHORT AND UPPER STREETS
LEXINGTON, KENTUCKY

Now In Lexington...

ONE OF THE SOUTH'S *Finest* Motels



110 Luxurious Rooms •	Cocktail Lounge		<p>Imperial House Motel U.S. 68 Waller Ave. at Harrodsburg Road Phone 255-2540 for Reservations</p>
Banquet & Meeting Rooms •	Two Dining Rooms		
Swimming Pool & Patio •	Dancing Nitely		

1966 KENTUCKY FOOTBALL SCHEDULE AND RESULTS

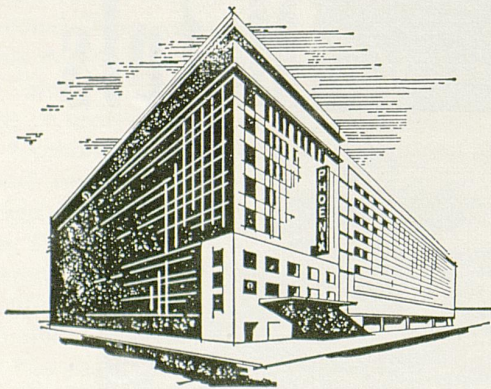
Date	Opponent	Site	UK	Opp.	Date	Opponent	Site
Sept. 17	*North Carolina (H)		10	0	Oct. 22	Georgia	Away
Sept. 24	*Mississippi (N)		0	17	Oct. 29	West Virginia	Away
Oct. 1	*Auburn	Home			Nov. 5	Vanderbilt (K-Day)	Home
Oct. 8	*Virginia Tech	Home			Nov. 12	Houston (HC)	Home
Oct. 15	*Louisiana State	Home			Nov. 19	Tennessee (TV).....	Away

* Night game

Turf Catering Co.

*"Serving Keeneland Association, Breeders Sales,
Lexington Trots, and Oaklawn Jockey Club at
Hot Springs, Arkansas"*

Lexington's Largest and Finest!



Kentucky's Convention
Headquarters

120 E. Main St.
Downtown Lexington, Ky.
Phone 255-3210

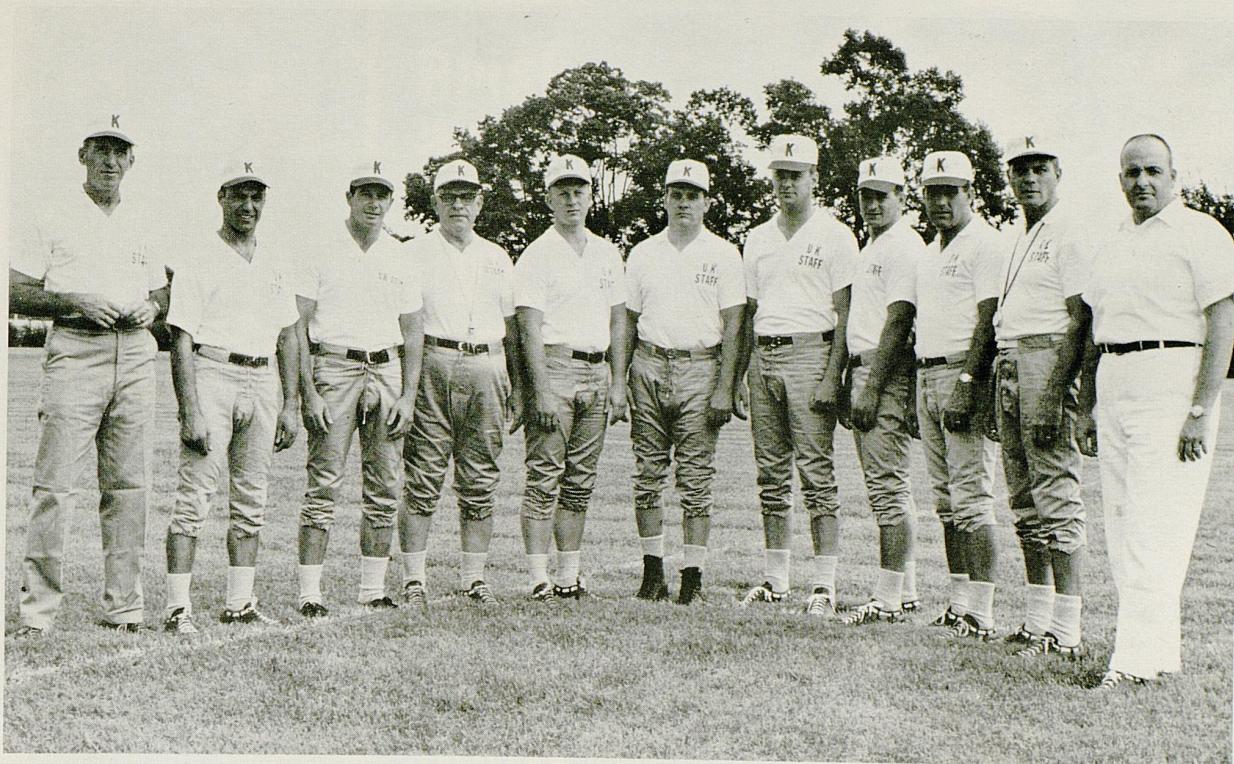
FEATURING

Le Deauville

RESTAURANT
and LOUNGE

- FREE PARKING
- BEVERAGE & FREE ICE MACHINE
ON EACH GUEST FLOOR
- 100% AIR CONDITIONED
- TV IN ALL ROOMS
- ALL ROOMS REMODELED
AND REDECORATED
- COFFEE SHOP AND DINING ROOM
WITH ECONOMICAL PRICES

PHOENIX HOTEL



Head Coach Charlie Bradshaw (left) poses with the aides who will be working with him in 1966. From the left, they include Phil Owen, Leon Fuller, Clarence Underwood, Wally English, Jim Poynter, Doug Shively, Charley Pell, Ray Callahan, George Sengel and Trainer Ralph Berlin.

Wildcat Coaching Staff

RAY CALLAHAN (Kentucky '56)—No stranger in state grid circles, Callahan is a former Kentucky back and guard from Lebanon who enjoyed a highly-successful coaching career in prep ranks following graduation . . . Prior to joining Bradshaw staff in 1963, he assisted at Versailles and Manual High and guided Danville to state AA title.

WALLY ENGLISH (Louisville '58)—A former quarterback for the U. of L. Cardinals, English works with the offensive backfield. He has a background of playing and coaching experience in Kentucky and Texas. First joined Bradshaw staff in 1965 as graduate assistant.

LEON FULLER (Alabama '61)—This new addition to the UK staff, who tutors the defensive backfield, played his final two seasons at Alabama when Bradshaw was an assistant. He won All-SEC honor as a defensive back and was named on the Academic All-America.

PHIL OWEN (Georgetown '53)—Like five other current Wildcat assistants, Owen entered collegiate coaching ranks by making Kentucky his first stop . . . Joined Bradshaw staff in 1964 after successful, nine-year tenure at Mt. Sterling High . . . He directs talented frosh team this season.

CHARLEY PELL (Alabama '63)—Entering his second season on the Kentucky staff, Pell enjoys the confidence of his new boss stemming from a three-year player and coach relationship while both were at Alabama . . . Works with the defensive interior line.

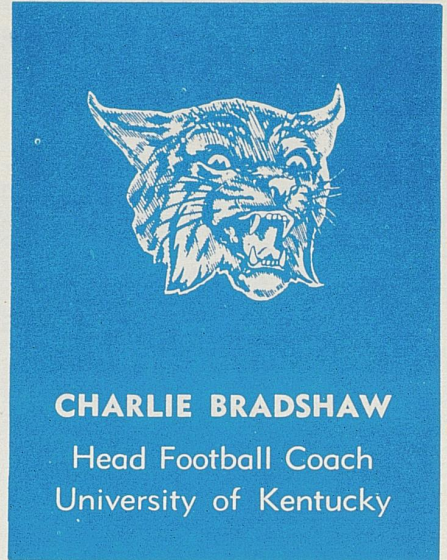
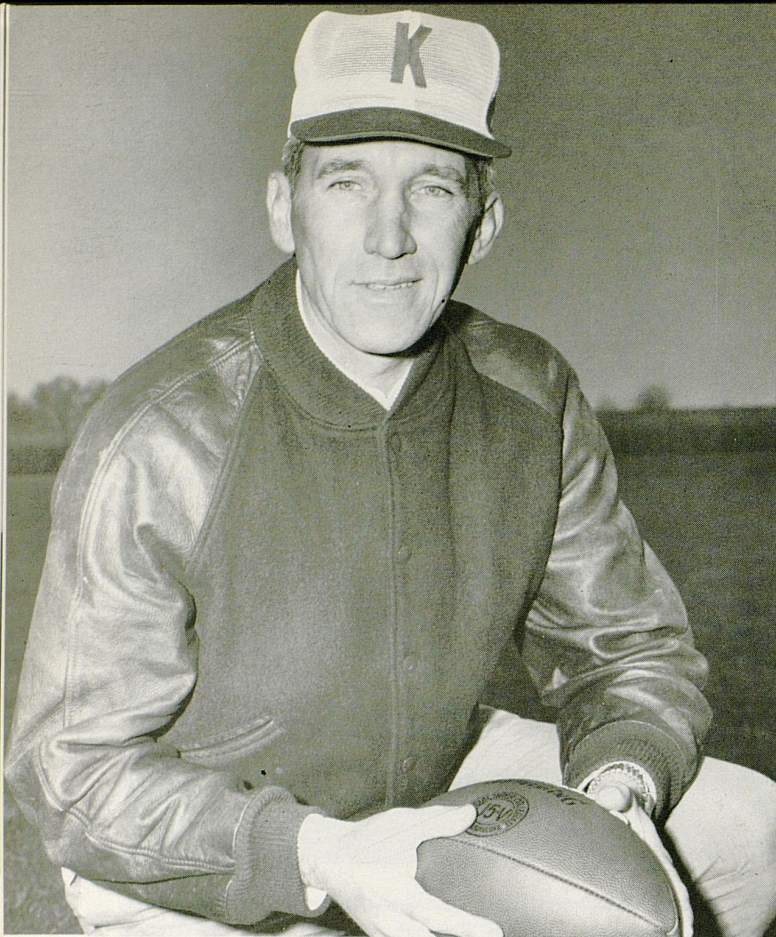
JIM POYNTER (Kentucky '61)—One of four former Wildcats on the staff, Poynter had a great high school coaching career before returning to UK early this year. In five seasons at three schools, his teams posted composite record of 40-10-1.

GEORGE SENDEL (Kentucky '48)—Louisvillian Sengel's career as a Wildcat wingman overlapped that of Coach Bradshaw by a couple of years and his former teammate asked Sengel to stay on the staff he had joined in 1961 . . . The 44-year-old Air Force vet had nine years of coaching schoolboy ranks in Florida and Kentucky prior to becoming UK end coach.

DOUG SHIVELY (Kentucky '59)—A youthful veteran of seven years in the coaching profession, Shively is a former Wildcat wingman and son of UK's Athletic Director. After one season at a Texas high school, Doug moved to Virginia Tech—his point of departure in coming to UK.

CLARENCE UNDERWOOD (Marshall '38)—Back "home" after 10-year absence, this tough-but-popular veterans has responsibility of shoring up UK defense. Spent 8 years here prior to successful 10-year stint at Jefferson High in Port Arthur, Texas. Compiled 77-26-6 record and was state "Coach of the Year."

RALPH BERLIN (Iowa State '62)—This 30-year-old Marine Corps veteran serves as head football trainer for the Wildcats . . . He's a veteran of six years in training field.



Wildcat Coach Sets Winning Tradition . . .

After four hectic years, Charlie Bradshaw stands high as a coach and gentleman, fully vindicated in his promise to rebuild the shattered foundations of Kentucky football into a solid front and re-establish a winning tradition.

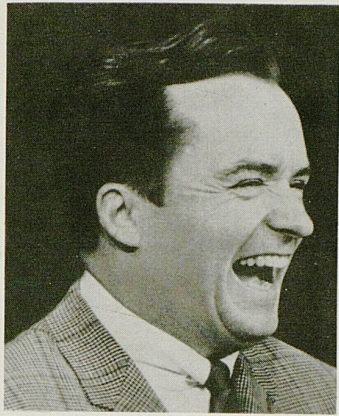
Exemplifying the faith placed in his hard work philosophy and procedures is the unique "lifetime" contract tendered the youthful and determined ex-Wildcat upon the successful (6-4) completion of an adversity-plagued 1965 season. The new pact, believed unique to college-coach relationships, assures Bradshaw of tenure similar to that given academic personnel. At such time as he ceases to perform his current coaching duties, he will have the opportunity to take another position on the University staff.

Bradshaw, a 41-year-old former UK end and assistant coach, returned to his alma mater in 1962 to take on the difficult task of repairing a sputtering Kentucky football machine that had not run well since the early fifties Bowl Era.

The magnitude of the repair job never will be fully understood by anyone less closely connected with it than the self-sacrificing Bradshaw. Only

he could take a positive approach to the almost impossible problems—and, more importantly, stick with it in the face of increasing odds. How he tackled the assignment of producing a winner out of the meager raw material reflects the type of person Charlie Bradshaw is—the personification of qualities of inner fortitude, outwardly serious demeanor, ability, confidence, integrity and quiet determination. He is an inspirational leader possessing the valuable trait of exuding enthusiasm and confidence to a degree that inspires those around him—players and assistants—to get the job done in a way that pays off with success. He demands great effort of himself and others in the belief that success cannot be purchased easily.

Bradshaw's influence not only is paying off with success on the gridiron—his 1965 team posted the school's best record since 1956—but also is being felt around the state. Coaches, alumni, general public and prospective Wildcats are rallying to the side of Bradshaw's long-range program in a fashion never before seen in the State of Kentucky.



**Brisk
and
Breezy
TV's
Biggest
Stars
Perform
on The
Mike
Douglas
Show ***



**4 P.M.
Daily
On**



Enjoy friendly service always...

FROM YOUR GOOD NEIGHBOR ASHLAND OIL DEALER



Yes, your Good Neighbor Ashland Oil Dealer offers friendly, helpful service and the finest petroleum products . . . like Ashland Vitalized Gasoline and Valvoline Motor Oil. And when you need tires, batteries or accessories, you can buy with confidence at an Ashland Oil Service Station—because your Good Neighbor Ashland Oil Dealer stands behind the products he sells.

Drive in soon. Get to know your Good Neighbor Ashland Oil Dealer. You'll like his fine petroleum products and his fast, friendly, expert service.



ASHLAND OIL & REFINING COMPANY
Ashland, Kentucky



MIKE CASSITY



BILL CARTWRIGHT



JERRY DAVIS



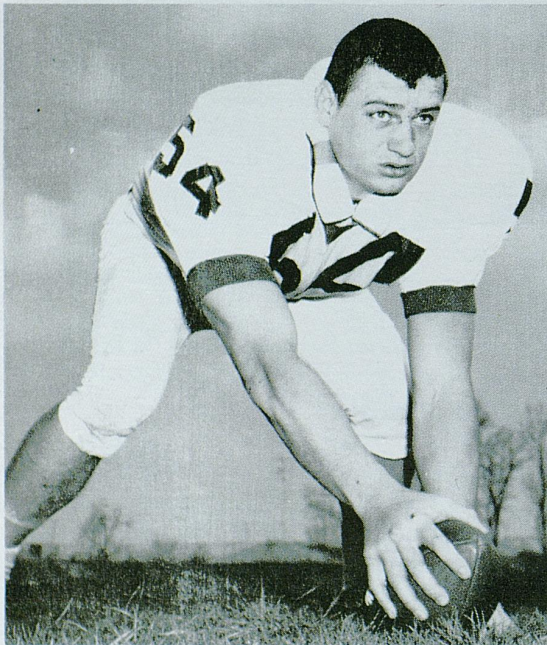
JOE CARROLL



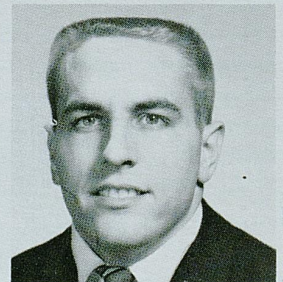
AL PHANEUF

KENTUCKY

CALVIN WITHROW



MIKE BEIRNE



BOB BARTKOW



CHUCK ARNOLD



TOM ANDERSON

YOUNG HO! GO CHEVRON!

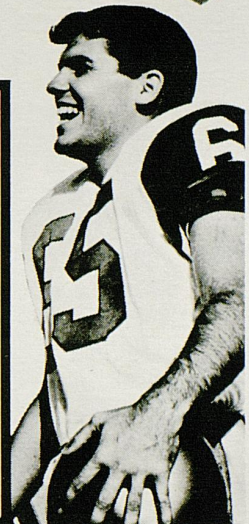


Follow the WILDCATS in '66



ON THE
STANDARD OIL
RADIO NETWORK

WVLK Lexington	WINN Louisville	WOMI Owensboro	WDXR Paducah
WCMI Ashland	WIEL E. Town	WHOP Hpk'ville	WMLF Pineville
WLBJ Bwl'g Green	WFKY Frankfort	WKIC Hazard	WPKE Pikeville
WCTT Corbin	WHIR Danville	WFTM Maysville	WKAY Glasgow
WSIP Paintsville	WNGO Mayfield	WSFC Somerset	



LEXINGTON'S #1 STATION YEAR after YEAR

CBS **WVLK** 590

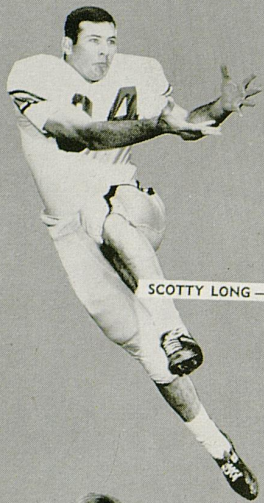
UK FOOTBALL
STANDARD OIL SPORTS NETWORK

- ★ Plus - "Pick-of-Dixie"
- ★ SEC Game of The Week
- ★ Cleveland Browns
- ★ Cincinnati Reds
- ★ ★ ★ ★ ★

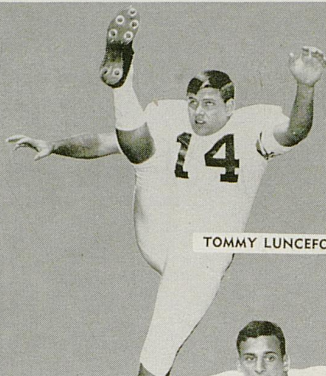


CLAUDE SULLIVAN

TIGERS



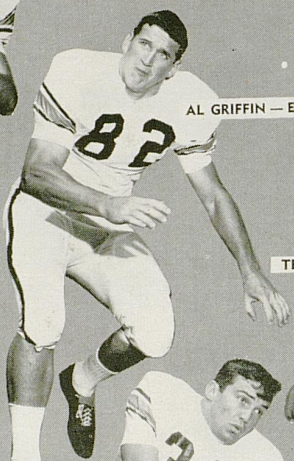
SCOTTY LONG — E



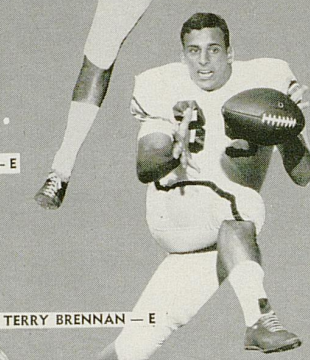
TOMMY LUNCEFORD — P



ROBERT MILLER — E



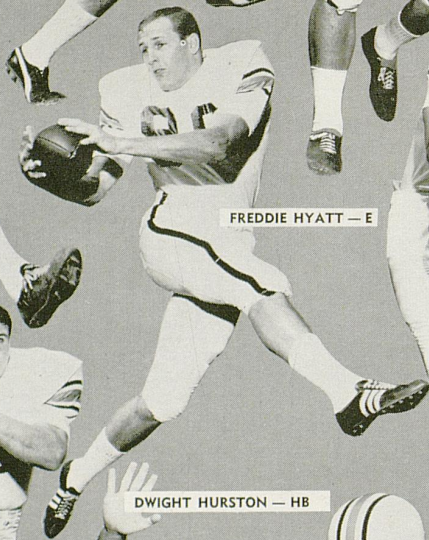
AL GRIFFIN — E



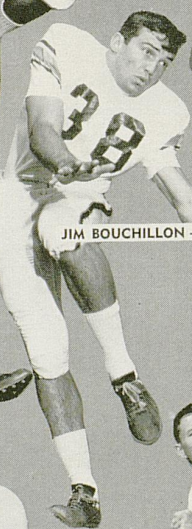
TERRY BRENNAN — E



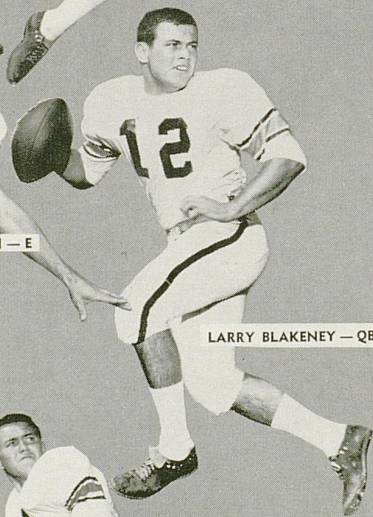
HANK HALL — HB



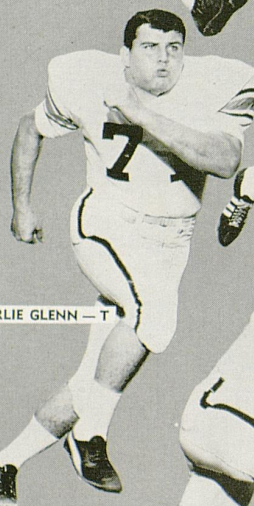
FREDDIE HYATT — E



JIM BOUCHILLON — E

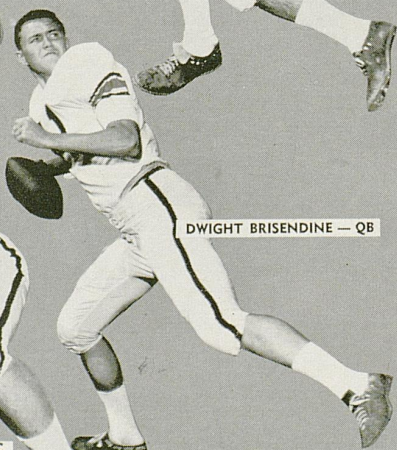


LARRY BLAKENEY — QB

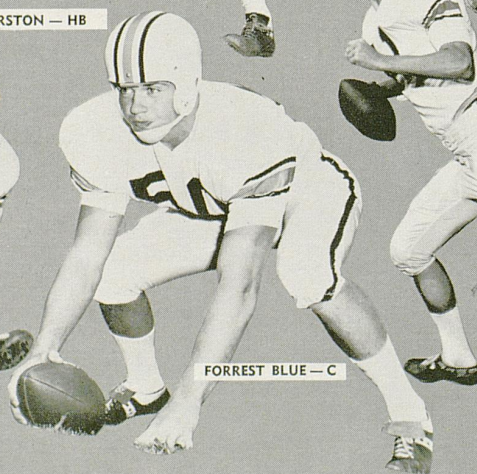


DWIGHT HURSTON — HB

CHARLIE GLENN — T



DWIGHT BRISENDINE — QB



FORREST BLUE — C

'SEATS ON
THE FIFTY-
YARD LINE'



EVERYDAY YOU
BANK WITH THE
WINNING 'TEAM' OF OVER
350 EMPLOYEES AT FIRST SECURITY ...
YOUR FULL-SERVICE BANK WITH
SEVEN CONVENIENT LOCATIONS.

First Security
NATIONAL BANK AND TRUST COMPANY

Member FDIC

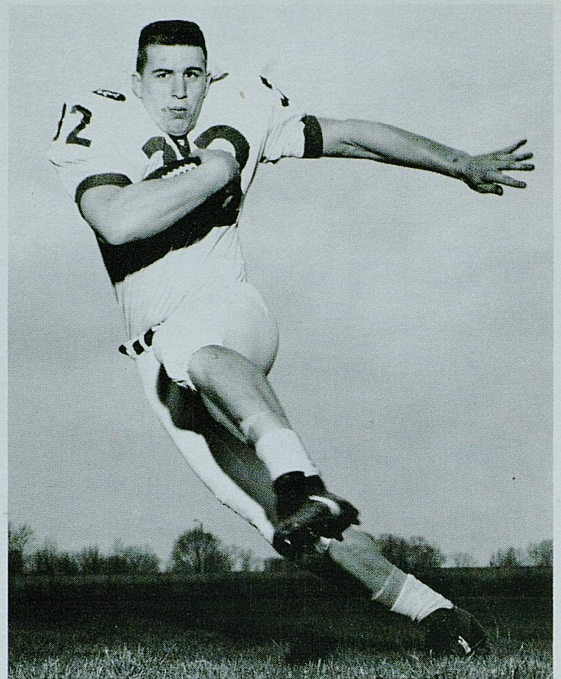
Member Federal Reserve System



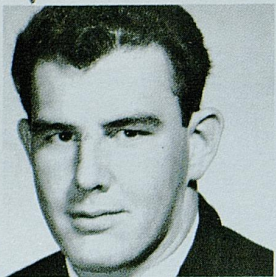
TOM FEE



BOB FRIEBERT



LARRY SEIPLE



DENNIS DRINNEN



TOM FERGUSON

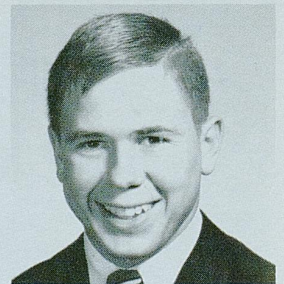


KENTUCKY

RICH MACHEL



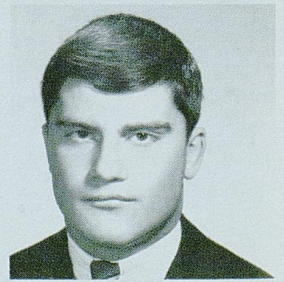
DON CHACOS



DAVID CHILDRE

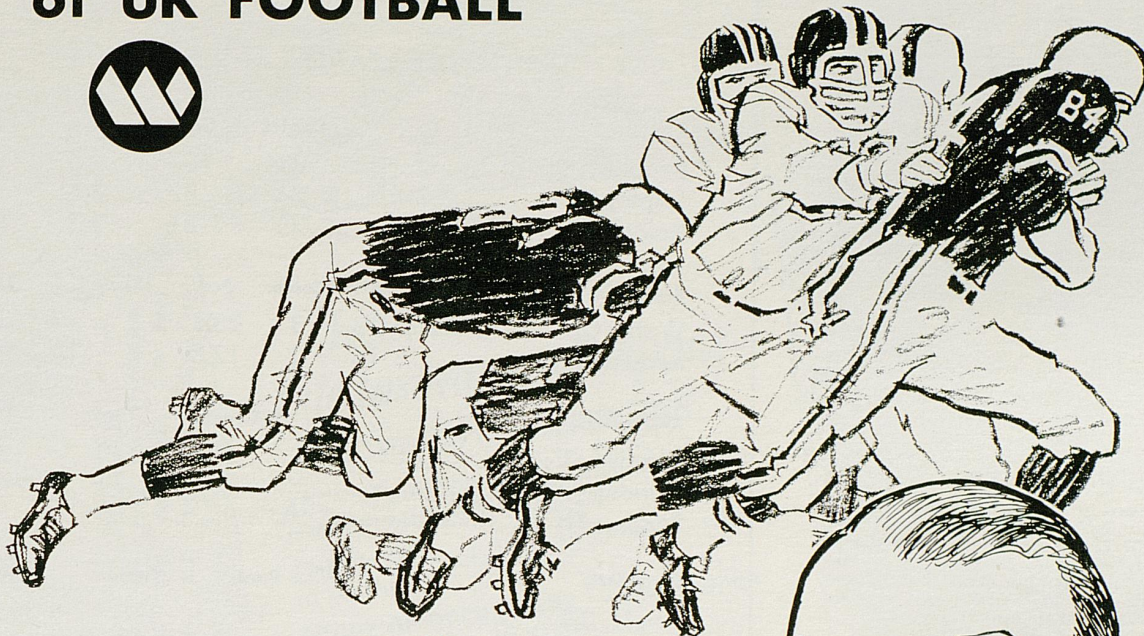


HOMER GOINS



ROD CLOYD

Hear the *GOING SOUND* of UK FOOTBALL



Follow the Wildcats with Cawood Ledford on 'H-A-S 840 Radio!



Cawood Calls Football

Before each game, Purnell's "Old Folks" Sausage sponsors a special program of football stories and interviews with sports director Cawood Ledford.

Football Warmup

Ten minutes prior to game time, Jerry's Drive-In Restaurants present Cawood with opponents' records, histories and rivalries.

EVERY UK FOOTBALL GAME

Cawood's play-by-play calls of UK football games are co-sponsored by Your Friendly SINCLAIR DEALER and EAST KENTUCKY Rural Electric Co-operatives.

S.E.C. FOOTBALL

Keep up with the Wildcats' opponents . . . exciting football every week.

 **WHAS 840 RADIO**



W. H. Davis (left), Alcoa's General Manager—Industrial Relations, says: "We've found that Army ROTC graduates with active duty experience as officers possess better than average initiative, foresight, and responsibility. These are qualities we rate very highly, and we gladly pay a premium to get them."

Why did Alcoa hire Rod Wilson?

Because Alcoa needs men to fill key positions—men capable of moving to the top; men who seek and measure up to responsibility. Rod Wilson is that kind of man. An Army ROTC Distinguished Military Graduate at Colorado State University, Rod won an officer's commission in the Regular Army along with his degree. Forty-four months of active duty, including 16 months overseas as an artillery commander, earned Rod Wilson 24-carat credentials as a leader, a man schooled in the demanding disciplines of command, the kind of man Alcoa looks for.

If you're this kind of man, prove it to yourself, and to the companies like Alcoa who are looking for you. How? Get in Army ROTC. Stay with Army ROTC, all the way to success.

ARMY ROTC

STATISTICALLY SPEAKING

KENTUCKY LEADERS — 2 GAMES

RUSHING	Carries	Gain	Avg.	TD's
Beadles, QB	24	107	4.5	0
Seiple, TB	24	87	3.6	1
Goins, TB	25	81	3.2	0

PASSING	Att.	Comp.	Pct.	Int.	Gain	TD's
Walz, QB	13	3	23.1	2	47	0
Beadles, QB	16	2	12.5	2	16	0

RECEIVING	Caught	Yards	TD's
Spanish, E	2	38	0
Windsor, WB	1	11	0
Seiple, TB	1	9	0

PUNTING	Punts	Yards	Avg.
Seiple, TB	12	475	39.6
Lyons, HB	3	145	48.3

SCORING	TD's	Convs.	FG's	Points
Seiple, TB	1	0	0	6
Arnold, KS	0	1	1	4

AUBURN LEADERS — 2 GAMES

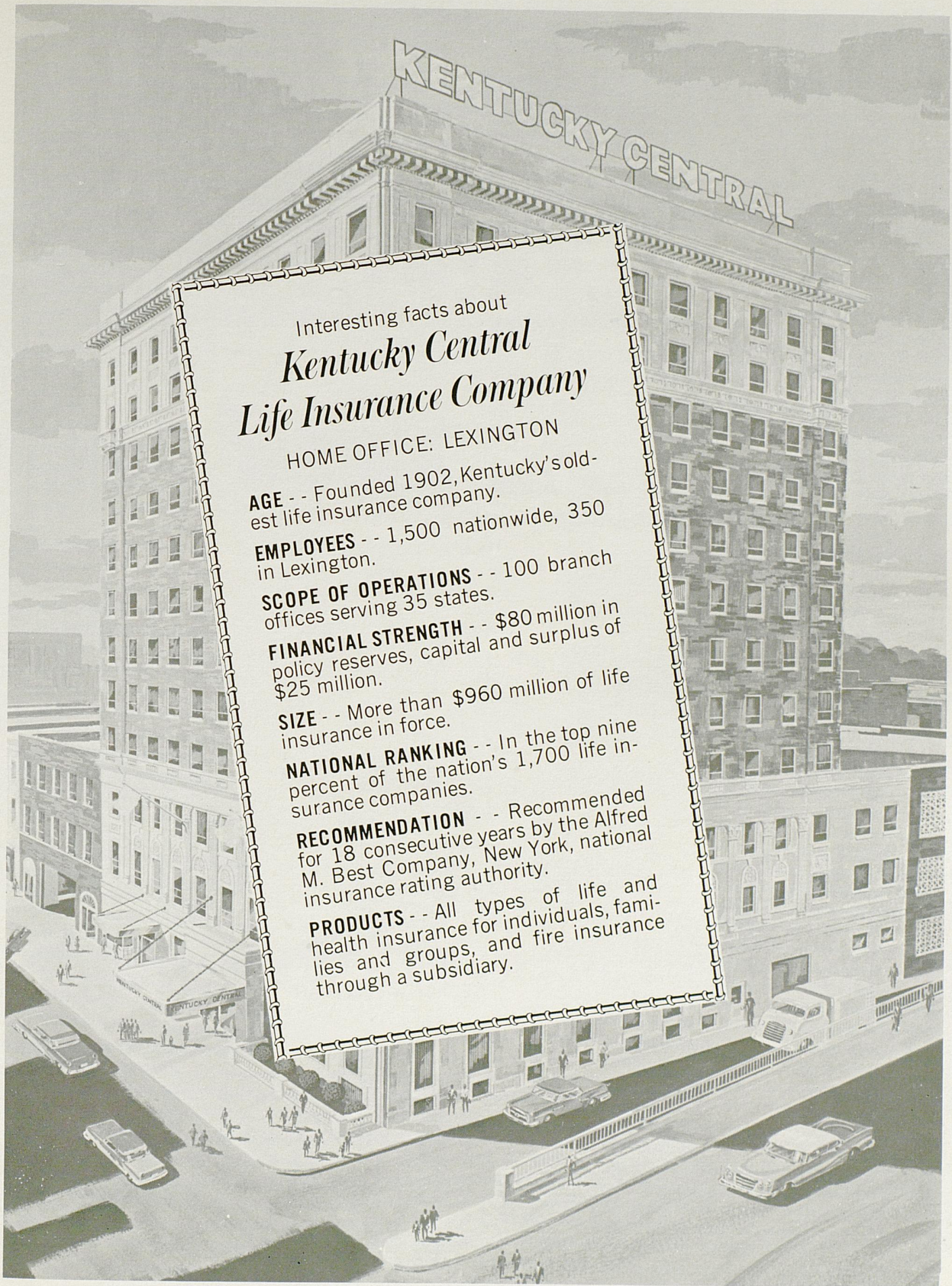
RUSHING	Carries	Gain	Avg.	TD's
Plagge, TB	21	117	5.6	0
Bryan, FB	21	98	4.7	1

PASSING	Att.	Comp.	Pct.	Int.	Gain	TD's
Blakeney, QB	22	9	40.9	2	167	1

RECEIVING	Caught	Yards	TD's
Hyatt, E	8	162	1
Perillard, WB	3	87	0

PUNTING	Punts	Yards	Avg.
Lunceford, KS	12	453	37.8

SCORING	TD's	Convs.	FG's	Points
J. Jones, SP	0	2-2	2-3	8
Hyatt, E	1	0-0	0-0	6
Bryan, FB	1	0-0	0-0	6



Interesting facts about
Kentucky Central
Life Insurance Company

HOME OFFICE: LEXINGTON

AGE - - Founded 1902, Kentucky's oldest life insurance company.

EMPLOYEES - - 1,500 nationwide, 350 in Lexington.

SCOPE OF OPERATIONS - - 100 branch offices serving 35 states.

FINANCIAL STRENGTH - - \$80 million in policy reserves, capital and surplus of \$25 million.

SIZE - - More than \$960 million of life insurance in force.

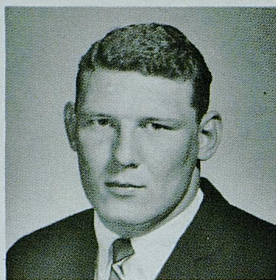
NATIONAL RANKING - - In the top nine percent of the nation's 1,700 life insurance companies.

RECOMMENDATION - - Recommended for 18 consecutive years by the Alfred M. Best Company, New York, national insurance rating authority.

PRODUCTS - - All types of life and health insurance for individuals, families and groups, and fire insurance through a subsidiary.



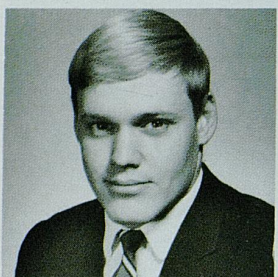
JACK GAWLER



RONNIE ROBERTS



MIKE McGRAW



KERRY CURLING

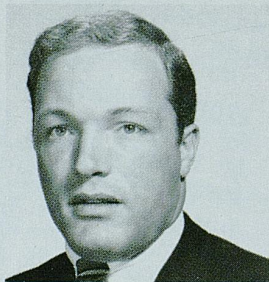
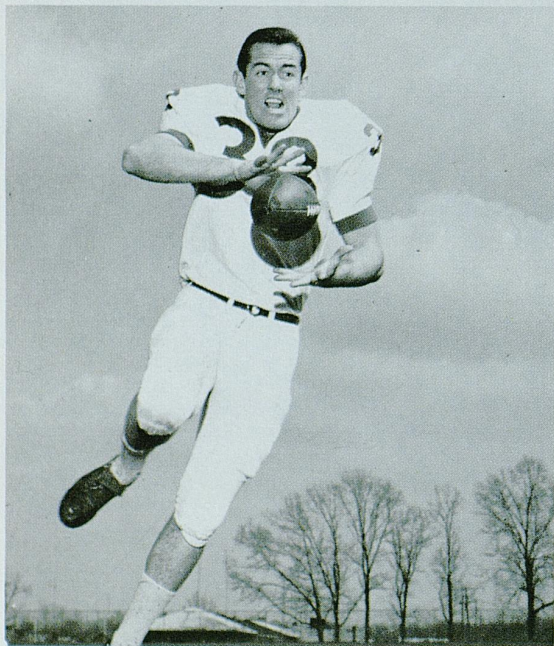


GEORGE KATZENBACH



KENTUCKY

BOB WINDSOR



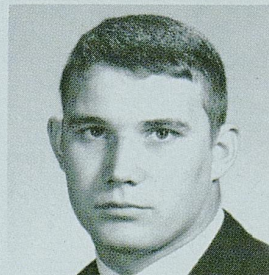
GEORGE McCLELLAN



DWIGHT LITTLE



DOYLE KING



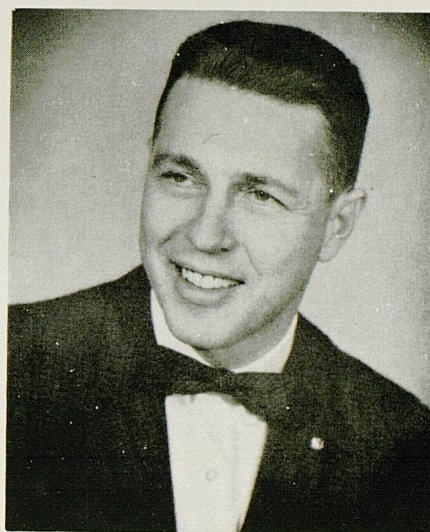
BASIL MULLINS



WBLG presents KENTUCKY FOOTBALL

BILL SORRELL

Play-by-Play
Announcing
of All Games



GEORGE CONLEY

Color and comment on
the broadcasts of all home games

BROADCASTS OF ALL U.K. GAMES PRESENTED BY

FRISCH'S
DRIVE-IN RESTAURANTS

DIXIE-BELL
DAIRY

SEVEN-UP

AMERICAN
DAIRY ASSOCIATION

DAWAHARE'S
DEPARTMENT STORE

MEADOW GOLD
DAIRY

WBLG

the Blue Grass station • dial 1300

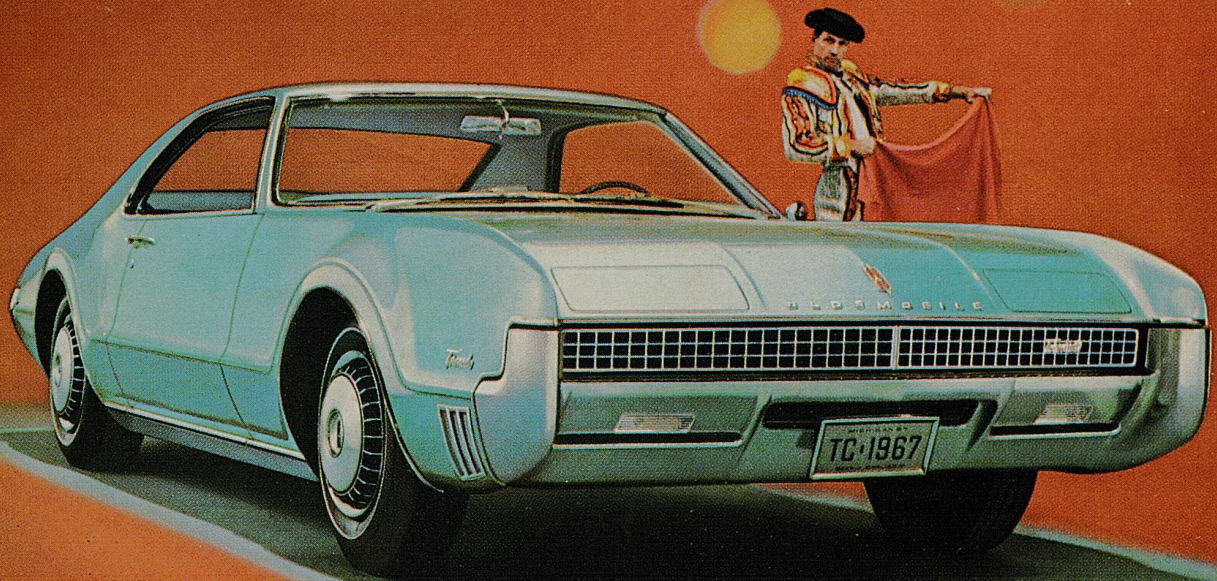
AUBURN

3	Jimmy Jones, Soph., SP	5-11	180	Opp, Ala.
4	Tommy Lunceford, Jr., SP	6-2	202	Montgomery, Ala.
9	Ben McDavid, Sr., SP	5-11	200	Montgomery, Ala.
10	Bucky Ayers, Jr., HB	6-0	170	Cedartown, Ga.
11	Dwight Brisendine, Soph., QB	6-2	190	Fort Payne, Ala.
12	Larry Blakeney, Soph., QB	5-11	190	Gordo, Ala.
16	Joe Campbell, Sr., QB	6-2	200	Pascagoula, Miss.
18	Loran Carter, Soph., QB	6-2	195	Dalton, Ga.
19	Tom Bryan, Sr., FB	6-0	200	Hartford, Ala.
20	Dwight Hurston, Soph., HB	6-0	180	Bremen, Ga.
21	Beal Lazenby, Soph., HB	6-1	180	Atlanta, Ga.
24	Robert Fulghum, Jr., HB	6-1	187	Boltvar, Tenn.
26	Jimmy Carter, Jr., HB	6-2	195	Cedartown, Ga.
28	Hank Hall, Jr., HB	6-1	192	Miami, Fla.
29	Bobby Beard, Sr., HB	6-0	190	Auburn, Ala.
32	Lee Kidd, Jr., FB	6-0	205	Atlanta, Ga.
35	Larry Ellis, Soph., FB	6-0	196	Mobile, Ala.
36	Richard Plagge, Jr., HB	6-2	212	Columbus, Ga.
37	Marvin Tucker, Jr., LB	5-10	205	Linden, Ala.
38	Jim Bouchillon, Jr., E	6-2	202	Cedar Bluff, Ala.
39	Harrison McCraw, Sr., LB	6-2	205	Andalusia, Ala.
40	Bobby Payne, Soph., R	6-2	207	Attalla, Ala.
42	Mike Penillard, Jr., HB	6-1	200	Hollywood, Fla.
45	Terry Brennan, Soph., R	6-1	195	Homestead, Fla.
46	George Davison, Soph., HB	5-11	182	Marietta, Ga.
48	Carl Hardy, Sr., HB	6-0	195	Myrtle Beach, S.C.
50	Forrest Blue, Jr., C	6-4	241	Tampa, Fla.
51	Robert Margeson, Jr., LB	6-0	202	Albany, Ga.
52	Charles Rizzo, Jr., C	6-1	217	Daytona Beach, Fla.
53	Dick Pittman, Soph., C	6-2	220	Dothan, Ala.
58	Don McCay, Jr., LB	6-2	216	Birmingham, Ala.
60	John Robinson, Jr., MG	5-11	200	Deshler, Ala.
61	Ray Chadwick, Soph., G	6-1	214	Valley Head, Ala.
62	Richard Wood, Jr., T	6-1	216	Glencoe, Ala.
65	Ron Yarbrough, Soph., MG	6-1	222	Columbus, Ga.
66	Mike Davis, Sr., G	5-11	206	Mobile, Ala.
67	Ken Jones, Jr., G	6-3	215	Hueytown, Ala.
68	Andy Gross, Sr., G	6-2	230	Elizabeth, N.J.
69	Gusty Yearout, Jr., MG	5-11	202	Birmingham, Ala.
70	Bill Braswell, Sr., T	6-3	232	Birmingham, Ala.
71	Charlie Glenn, Jr., T	6-3	234	Chattanooga, Tenn.
72	Mike Morris, Soph., T	6-2	218	Bessemer, Ala.
73	Roy Tetum, Jr., T	6-3	223	Flomaton, Ala.
74	Doug Sueli, Jr., T	6-2	220	Birmingham, Ala.
75	Larry Jeffers, Sr., T	5-11	216	Florence, Ala.
77	Jerry Gordon, Soph., T	6-5	224	Chattanooga, Tenn.
78	Charles Collins, Jr., T	6-2	213	Smyrna, Ga.
79	Bucky Howard, Soph., T	6-2	215	Birmingham, Ala.
82	Scotty Long, Sr., E	6-3	212	Lawton, Okla.
85	Tim Christian, Soph., E	6-0	188	Covington, Ga.
86	Bill James, Soph., E	6-1	195	Jasper, Ala.
87	Bruce McAfee, Jr., E	6-3	210	Altoona, Ala.
88	Freddie Hyatt, Jr., E	6-3	203	Sylacauga, Ala.
91	Hubert Comer, Jr., E	6-3	218	Fort Walton, Fla.
92	Al Giffin, Soph., E	6-3	224	Gainesville, Fla.
93	Jim Ingle, Sr., E	6-0	194	Birmingham, Ala.
95	Tommy Groat, Soph., E	6-2	208	Fort Payne, Ala.
99	Robert Miller, Sr., E	6-2	210	Cedartown, Ga.

KENTUCKY

12	Roger Walz, Sr., QB	22	5-10	171	Ft. Thomas, Ky.
14	Terry Beadles, Jr., QB	20	5-11	192	Fulton, Ky.
15	Tom Ferguson, Soph., LB	19	5-11	182	Ashland, Ky.
16	Bob Barkow, Sr., QB	21	6-0	187	Rockville, Md.
17	Jim Prather, Soph., QB	19	6-0	186	Cincinnati, Ohio
18	Rod Cloyd, Soph., DHB	19	6-0	193	Lawrenceburg, Ky.
21	Mike Granato, Soph., SAF	20	6-1	180	Cumberland, Ky.
22	Tom Fee, Jr., DHB	21	5-9	171	Uniontown, Pa.
23	Homer Goins, Jr., TB	22	5-11	191	Evarts, Ky.
24	Dicky Lyons, Soph., DHB	19	6-0	183	Louisville, Ky.
25	Jerry Davis, Sr., SAF	22	5-10	180	Fairborn, Ohio
30	Don Chacos, Soph., WB	19	6-2	186	Bethesda, Md.
32	Larry Seiple, Sr., TB	21	5-11	205	Allentown, Pa.
33	Steve Gray, Soph., DHB	19	6-2	189	Detroit, Mich.
34	Al Phaneuf, Soph., DHB	22	6-0	190	Montreal, Quebec
36	Joe Carroll, Jr., FB	21	5-9	185	Sharon Hill, Pa.
38	Bob Windsor, Sr., WB	24	6-4	216	Silver Spring, Md.
40	Mike McGraw, Sr., LB	21	5-11	205	Ft. Thomas, Ky.
41	Don Britton, Jr., FB	22	5-10	199	Broomall, Pa.
42	Kerry Curling, Jr., DG	20	5-9	189	Princeton, Ky.
43	Rodger Hart, Jr., LB	21	5-9	178	Albertville, Ala.
44	Bill Jansen, Soph., LB	19	5-11	188	Louisville, Ky.
45	George McClellan, Jr., LB	23	5-10	180	Bristol, Tenn.
46	Ken Wood, Soph., LB	19	6-0	193	Montgomery, Ala.
50	John Harris, Soph., LB-C	19	6-2	200	Highland Park, Ill.
51	Bill Cartwright, Soph., C	19	6-0	203	Princeton, Ky.
52	Eddie Ingram, Soph., C-G	20	5-10	185	Dyersburg, Tenn.
54	Calvin Withrow, Sr., C	21	6-0	218	Kettering, Ohio
55	Ronnie Roberts, Jr., LB	20	6-3	225	Louisville, Ky.
60	Mike Beirne, Jr., OG	21	6-1	206	McKeesport, Pa.
61	Mike Cassidy, Jr., OG	21	6-2	210	Xenia, Ohio
62	David Childre, Soph., OG	18	6-0	188	Henderson, Ky.
63	Doyle King, Soph., DT	19	6-1	214	Mt. Sterling, Ky.
64	Rich Machel, Sr., DG	21	6-1	202	Pittsburgh, Pa.
65	Jim Gresham, Jr., DG-DT	20	6-0	223	Jeffersonville, Ind.
66	Wesley Nails, Soph., OG	20	6-2	222	Loyal, Ky.
67	Louis Wolf, Soph., OG	19	5-11	192	Louisville, Ky.
68	Ed Zaremba, Soph., DT	20	6-2	203	Parma, Ohio
69	Dick Palmer, Soph., DG-DT	19	6-1	208	Huntsville, Ala.
71	Bob Friebert, Soph., OT	19	6-2	213	Louisville, Ky.
72	Jack Gawler, Jr., DT	20	6-1	235	Rockville, Md.
73	Marty Joyce, Soph., DT	19	6-1	236	Wilmington, Del.
74	Dennis Drinnen, Soph., OT	19	6-1	224	Loveland, Ohio
75	Scott Valentine, Soph., OT	19	6-0	220	Fairfax, Va.
76	Dwight Little, Jr., OT	20	6-3	226	Marion, Ky.
77	Leonard Rush, Soph., OT	19	6-2	226	Hamilton, Ohio
78	Basil Mullins, Sr., DT	22	6-4	215	Paintsville, Ky.
79	George Karzenbach, Soph., DT	20	6-1	227	Philadelphia, Pa.
80	Phil Greer, Soph., OE	19	6-2	192	Burdine, Ky.
81	Tom Anderson, Jr., DE-OE	22	6-0	177	Birmingham, Ala.
82	Dan Spanish, Sr., OE	21	5-10	195	New Castle, Pa.
83	Derek Porter, Soph., OE	19	6-2	199	Elkhorn City, Ky.
84	Tommy Sauer, Soph., OE	20	5-11	189	Owensboro, Ky.
85	Jim Swart, Sr., DE	21	6-2	224	Louisville, Ky.
86	Joe David Smith, Sr., DE	21	6-1	205	Mayfield, Ky.
87	Doug Van Meter, Jr., DE	20	6-0	200	Owensboro, Ky.
88	Jeff Van Note, Soph., DE	20	6-1	210	Anchorage, Ky.
89	John Zeles, Soph., DE-OE	20	6-2	191	Phoenixville, Pa.
90	Chuck Arnold, Sr., KS	21	6-1	210	Howell, Mich.

The Rocket Action Cars are out front again!



After you've walked off with all the honors,
what do you do for an encore?

Meet Olds Toronado—'67 edition.

Awards for this. Awards for that. Awards for just about everything. But rest on its laurels? Not Toronado. Swinging new look outside. Posh new detailing inside. Doors with torsion-bar spring assists that open easier than ever to the flat-floored, room-for-six interior. Even that fabulous front-wheel-drive ride is smoother and quieter for '67. And front disc brakes and radial ply tires are available. Trend-setting Toronado: Proved and applauded by tens of thousands of satisfied owners. Greater than ever the second time around!

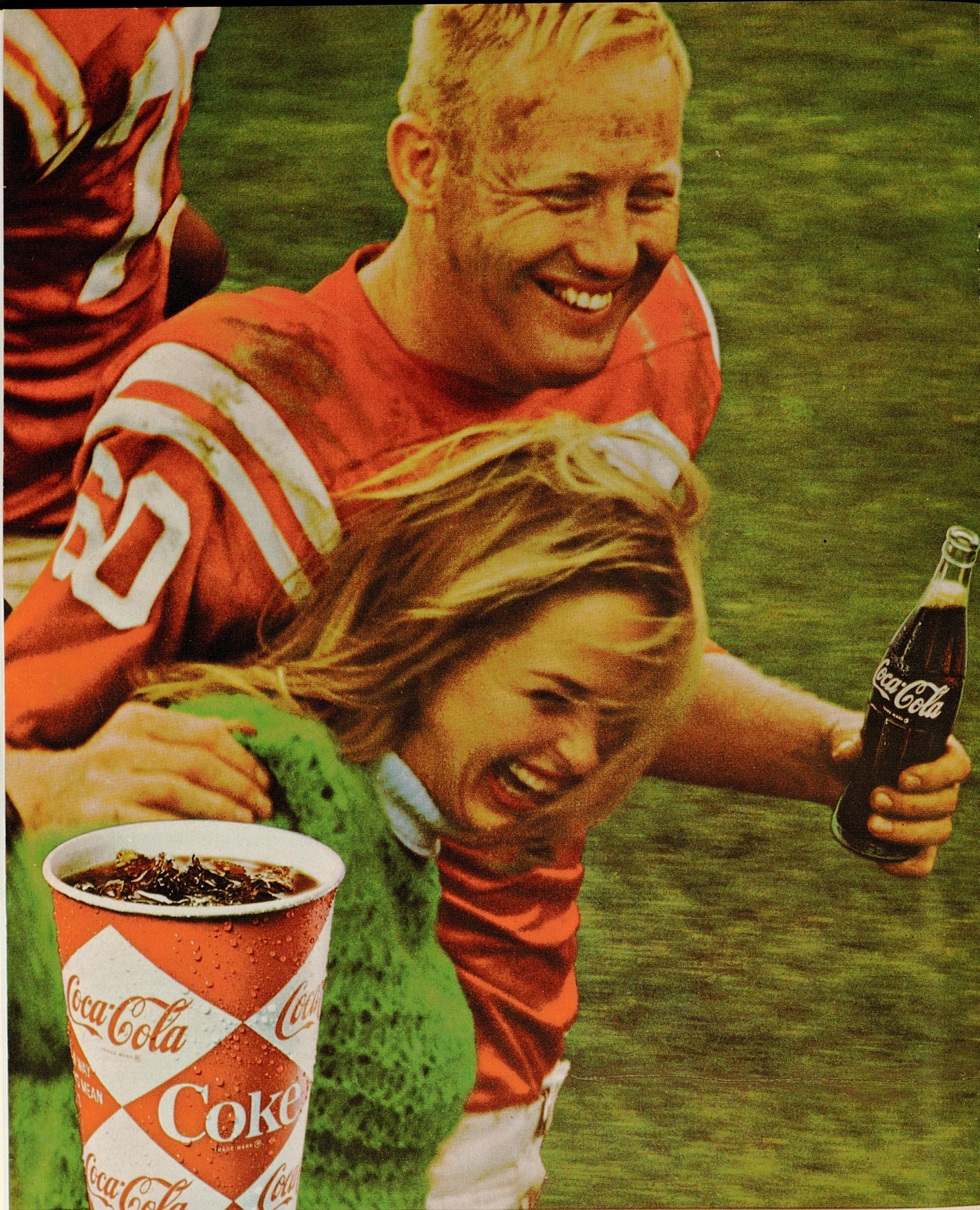
OB
EY
LA
WS
DR
IVE
SA
FELY

Olds thinks of your safety, too, with the GM-developed energy-absorbing steering column that can compress on severe impact up to 8½ inches; with four-way hazard warning flasher; outside rearview mirror; dual master cylinder brake system, plus many other safety features—all standard for '67.

Engineered for excitement . . . Toronado-style!

'67 OLDSMOBILE





things go
better
with
Coke
TRADE-MARK ®

FOR THE TASTE Y

OFFENSE

- 88 FREDDIE HYATT SE
- 70 BILL BRASWELL LT
- 66 MIKE DAVIS LG
- 50 FORREST BLUE C
- 71 CHARLIE GLENN RG
- 68 ANDY GROSS RT
- 82 SCOTTY LONG TE
- 12 LARRY BLAKENEY QB
- 36 RICHARD PLAGGE TB
- 42 MIKE PERILLARD WB
- 19 TOM BRYAN FB

Auburn

DEFENSE

- 99 ROBERT MILLER LE
- 78 CHARLES COLLINS LT
- 69 GUSTY YEAROUT MG
- 62 RICHARD WOOD RT
- 92 AL GIFFIN RE
- 51 ROBERT MARGESON LB
- 39 HARRISON McCRAW LB
- 38 JIM BOUCHILLON R
- 24 ROBERT FULGHUM LH
- 26 JIMMY CARTER RH
- 10 BUCKY AYRES SAF

TIGERS SQUAD

- | | |
|-------------------|------------------|
| 3 J. Jones, SP | 53 Pittman, C |
| 4 Lunceford, SP | 58 McCay, LB |
| 9 McDavid, SP | 60 Robinson, MG |
| 10 Ayers, HB | 61 Chadwick, G |
| 11 Brisendine, QB | 62 Wood, T |
| 12 Blakeney, QB | 65 Yarbrough, MG |
| 16 Campbell, QB | 66 Davis, G |
| 18 L. Carter, QB | 67 K. Jones, G |
| 19 Bryan, FB | 68 Gross, G |
| 20 Hurston, HB | 69 Yearout, MG |
| 21 Lazenby, HB | 70 Braswell, T |
| 24 Fulahum, HB | 71 Glenn, T |
| 26 J. Carter, HB | 72 Morris, T |
| 28 Hall, HB | 73 Tatum, T |
| 29 Beaird, HB | 74 Suell, T |
| 32 Kidd, FB | 75 Jeffers, T |
| 35 Ellis, FB | 78 Collins, T |
| 36 Plagge, HB | 79 Howard, T |
| 37 Tucker, LB | 82 Long, E |
| 38 Bouchillon, E | 85 Christian, E |
| 39 McCraw, LB | 86 James, E |
| 40 Payne, R | 87 McAfee, E |
| 42 Perillard, HB | 88 Hyatt, E |
| 45 Brennan, R | 91 Comer, E |
| 46 Davison, HB | 92 Giffin, E |
| 48 Hardy, HB | 93 Ingle, E |
| 50 Blue, C | 95 Groat, E |
| 51 Margeson, LB | 99 Miller, E |
| 52 Rizzo, C | |

DEFENSE

- 87 DOUG VAN METER LE
- 64 RICH MACHEL LT
- 42 KERRY CURLING MG
- 79 GEORGE KATZENBACH RT
- 88 JEFF VAN NOTE RE
- 44 BILL JANSEN LB
- 55 RONNIE ROBERTS LB
- 40 MIKE McGRAW LB
- 34 AL PHANEUF LH
- 25 JERRY DAVIS SAF
- 24 DICKY LYONS RH

Kentucky

OFFENSE

- 82 DAN SPANISH QE
- 76 DWIGHT LITTLE QT
- 67 LOUIS WOLF QG
- 54 CAL WITHROW C
- 61 MIKE CASSITY SG
- 77 LEONARD RUSH ST
- 83 DEREK POTTER SE
- 14 TERRY BEADLES QB
- 32 LARRY SEIPLE TB
- 38 BOB WINDSOR WB
- 41 DON BRITTON FB

WILDCAT SQUAD

- | | |
|------------------|--------------------|
| 12 Walz, QB | 61 Cassity, OG |
| 14 Beadles, QB | 62 Childre, OG |
| 15 Ferguson, LB | 63 King, DT |
| 16 Bartkow, QB | 64 Machel, MG |
| 17 Prather, QB | 65 Gresham, DG-DT |
| 18 Cloyd, DHB | 66 Nails, OG |
| 21 Granato, SAF | 67 Wolf, OG |
| 22 Fee, DHB | 68 Zaremba, DT |
| 23 Goins, TB | 69 Palmer, DG-DT |
| 24 Lyons, DHB | 71 Friebert, OT |
| 25 Davis, SAF | 72 Gawler, DT |
| 30 Chacos, WB | 73 Joyce, DT |
| 32 Seiple, TB | 74 Drinnen, OT |
| 33 Gray, DHB | 75 Valentine, OT |
| 34 Phaneuf, DHB | 76 Little, OT |
| 36 Carroll, FB | 77 Rush, OT |
| 38 Windsor, WB | 78 Mullins, DT |
| 40 McGraw, LB | 79 Katzenbach, DT |
| 41 Britton, FB | 80 Greer, OE |
| 42 Curling, DG | 81 Anderson, DE-OE |
| 43 Hart, LB | 82 Spanish, OE |
| 44 Jansen, LB | 83 Potter, OE |
| 45 McClellan, LB | 84 Sauer, OE |
| 46 Wood, LB | 85 Swart, DE |
| 50 Harris, LB-C | 86 Smith, DE |
| 51 Cartwright, C | 87 Van Meter, DE |
| 52 Ingram, C-G | 88 Van Note, DE |
| 54 Withrow, C | 89 Zeles, DE-OE |
| 55 Roberts, LB | 90 Arnold, KS |
| 60 Beirne, OG | |

— Officials —

- Referee Johnny Cook
- Umpire Harvey Hardy
- Head Linesman Robert W. Gaston

- Field Judge Preston Watts
- Back Judge Sam W. Bartholomew
- Electric Clock Operator William Stanton

"COCA-COLA" AND "COKE" ARE REGISTERED TRADE-MARKS WHICH IDENTIFY ONLY THE PRODUCT OF THE COCA-COLA COMPANY. PRINTED IN U.S.A.

YOU NEVER GET TIRED OF





IN '67 BUICK

Get in with the In Crowd in a GS-400



BUICK MOTOR DIVISION

KENTUCKY SPECIALISTS

PLACEMENTS: Granato (21), Arnold (90)
 PUNTING: Seiple (32), Lyons (24), Beadles (14)

INFORMATION

SERIES: UK Won 4, Auburn Won 9, Ties 1
 LAST UK WIN: 20-0 in 1964 (H)
 NEXT MEETING: October 7, 1967 (A)

QUICK E
 82 SPANISH
 84 Sater

QUICK T
 76 Little
 71 Friebert

QUICK G
 67 Wolf
 60 Beirne

CENTER
 54 WITHROW
 51 Cartwright

STRONG G
 61 Cassidy
 66 Nails

STRONG T
 77 Rush
 74 Drimmen

STRONG E
 83 Potter
 80 Greer

OFFENSE

QUARTERBACK
 14 Beadles
 12 WALZ

TAILBACK
 32 SEIPLE
 23 Goins

FULLBACK
 41 Britton
 36 Carroll

WINGBACK
 38 WINDSOR
 30 Chacos

OFFENSE

LEFT END
 87 Van Meter
 85 SWART

LEFT TACKLE
 64 MACHEL
 78 MULLINS

LINEBACKER
 55 Roberts
 50 Harris

MIDDLE GUARD
 42 Curling
 (64 MACHEL)

LINEBACKER
 40 McGRAW
 43 Hart

RIGHT TACKLE
 79 Katzenbach
 65 Gresham

RIGHT END
 88 Van Note
 86 SMITH

DEFENSE

ROVER
 44 Jansen
 15 Ferguson

LEFT HALF
 34 Phaneuf
 22 Fee

SAFETY
 25 DAVIS
 21 Granato

RIGHT HALF
 24 Lyons
 18 Cloyd

DEFENSE

AUBURN SPECIALISTS

KO-PAT-FG: McDavid (9), J. Jones (3)
 PUNTERS: Lunceford (4), Brisendine (11)

SERIES INFORMATION

BIGGEST WIN: By Kentucky 20-0 in 1964
 By Auburn 33-0 in 1959
 AT LEXINGTON: UK won 3, AU won 4

SPLIT END
 88 Hyatt
 85 Christian

LEFT TACKLE
 70 BRASWELL
 77 Gordon

LEFT GUARD
 66 DAVIS
 61 Chadwick

CENTER
 50 Blue
 53 Pittman

RIGHT GUARD
 71 Glenn
 67 K. Jones

RIGHT TACKLE
 68 GROSS
 79 Howard

TIGHT END
 82 LONG
 86 James

OFFENSE

FULLBACK
 19 BRYAN
 32 Kidd

WINGBACK
 42 Perillard
 48 HARDY

TAILBACK
 36 Plagge
 20 Hurston

QUARTERBACK
 12 Blakeney
 18 L. Carter

OFFENSE

LINEBACKER
 39 McCRAW
 (45 Brennan)

LINEBACKER
 51 Margeson
 58 McCay

LEFT END
 99 MILLER
 95 Groat

LEFT TACKLE
 78 Collins
 74 Suell

MIDDLE GUARD
 69 Yearout
 60 Robinson

RIGHT TACKLE
 62 Wood
 73 Tatum

RIGHT END
 92 GIFFIN
 91 Comer

DEFENSE

ROVER
 38 Bouchillon
 45 Brennan

LEFT HALF
 24 Fulghum
 29 BEAIRD

RIGHT HALF
 26 J. Carter
 (29 BEAIRD)

SAFETY
 10 Ayers
 28 Hall

DEFENSE

FACTS ABOUT KENTUCKY

President Dr. John W. Oswald
 Athletic Director Bernie Shively
 Head Coach Charlie Bradshaw
 Publicists Ken Kuhn and Bill Baxter
 Colors Blue and White
 Offense Wing T and "I"

KENTUCKY Wildcats

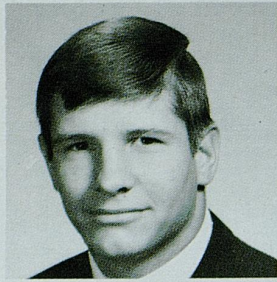
(SENIORS, Juniors, Sophomores)

FACTS ABOUT AUBURN

President Dr. Harry M. Philipott
 Athletic Director G. W. "Jeff" Beard
 Head Coach Ralph Jordan
 Publicist Buddy Davidson
 Colors Burnt Orange and Navy Blue
 Offense Multiple T

AUBURN Tigers

(SENIORS, Juniors, Sophomores)



STEVE GRAY



PHIL GREER



ROGER WALZ



BILL JANSEN

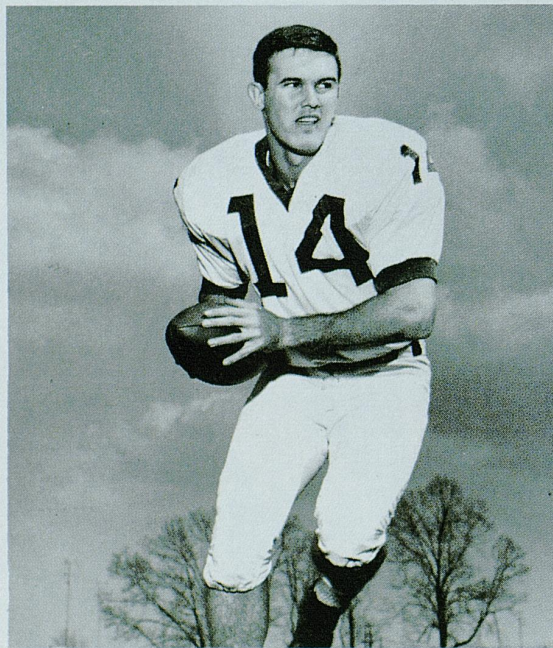


RODGER HART

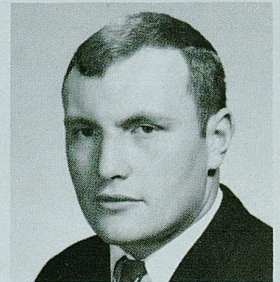


ENTUCKY

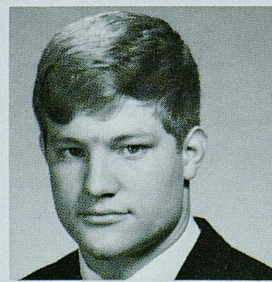
TERRY BEADLES



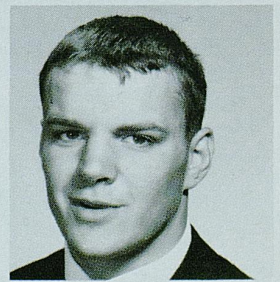
JIM GRESHAM



MARTY JOYCE



JOHN HARRIS



MIKE GRANATO

WLEX-TV

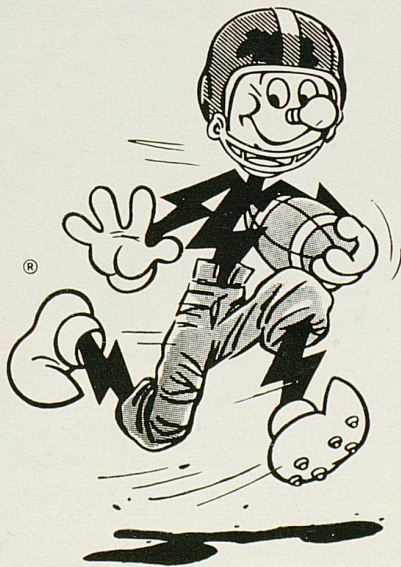
"Best in SPORTS"



CY FOLLMER
WLEX-TV
SPORTS DIRECTOR

Presents

- SPORTS EXTRA 6:00 P.M.
- SPORTS FINAL 11:20 P.M.
- ● BOTH in FULL COLOR
- **NFL FOOTBALL 66-67**
- 32 GAMES
- ● ● ● Including ● ● ● ●
- NFL Championship Game Jan. 1
- NFL Runner-up Bowl Jan. 8
- NFL PRO - Bowl Jan. 15
- And Many Top NCAA Bowl Games



LET'S GO!

GO!

GO!

GO!

ALL ELECTRIC

KU
SYMBOL
of
SERVICE

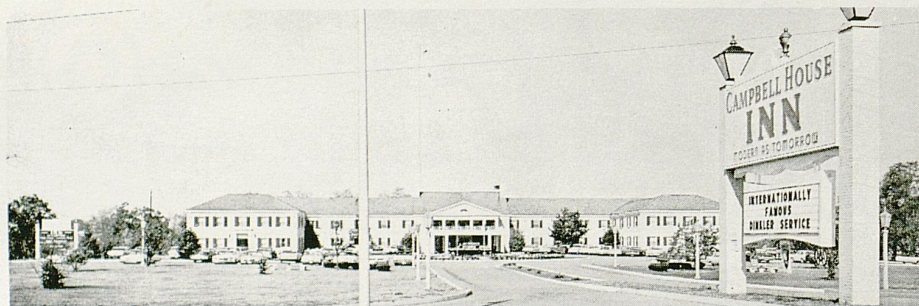
You meet the happiest people in an All-Electric home!

KENTUCKY UTILITIES COMPANY

DeBoor

Laundry Dry Cleaning
Rug Cleaning Storage

★ ★ ★ ★ ★ ★ ★ ★ ★ ★ ★ ★ ★ ★ ★ ★
KEEP FREEDOM
IN YOUR FUTURE
WITH
U. S. SAVINGS BONDS
★ ★ ★ ★ ★ ★ ★ ★ ★ ★ ★ ★ ★ ★ ★ ★



Dinkler Campbell House Inn

Nothing matches the Dinkler Campbell House Inn for fun or food. The superb cuisine of the Cotillion Room (winner of the coveted Holiday Magazine excellence award for several years) will make your stay a memorable experience. Here you will find a happy blending of traditional Kentucky hospitality and every modern convenience; luxurious suites and rooms, beautiful Dining Room, Cocktail Lounge with sparkling entertainment, Exercise and Massage Room, Gift Shop, Dress Shop, Barber Shop and Beauty Salon. Adjacent to Par Three Golf Course and Driving Range. May we have the pleasure of serving you soon?

Harrodsburg Road • Lexington, Kentucky
Phone 254-8490

Paul Cordet • General Manager

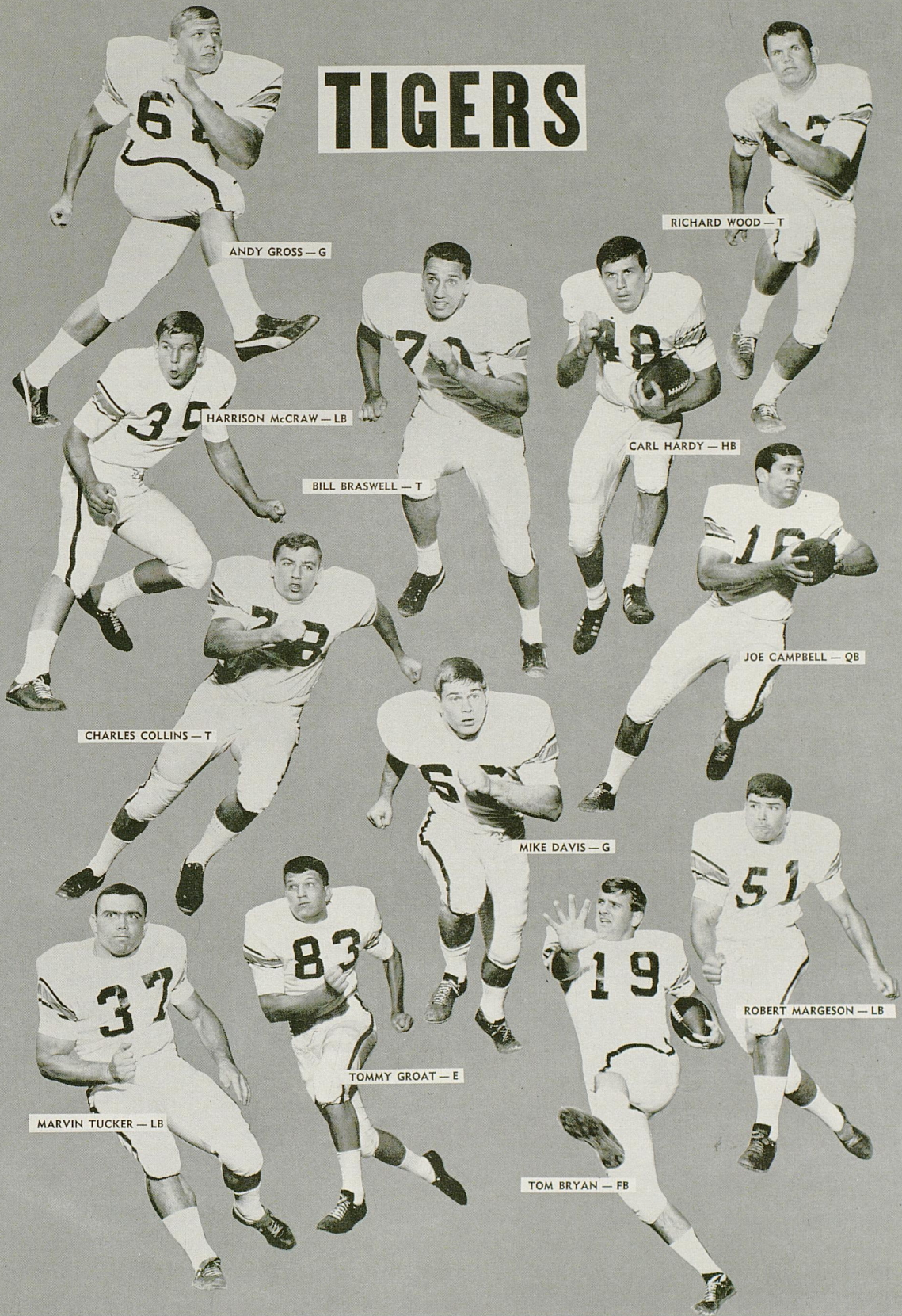


DINKLER HOTEL CORPORATION • Carling Dinkler, Jr., President

A wholly - owned subsidiary of Transcontinental Investing Corporation



TIGERS



ANDY GROSS — G

RICHARD WOOD — T

HARRISON McCRAW — LB

CARL HARDY — HB

BILL BRASWELL — T

JOE CAMPBELL — QB

CHARLES COLLINS — T

MIKE DAVIS — G

ROBERT MARGESON — LB

MARVIN TUCKER — LB

TOMMY GROAT — E

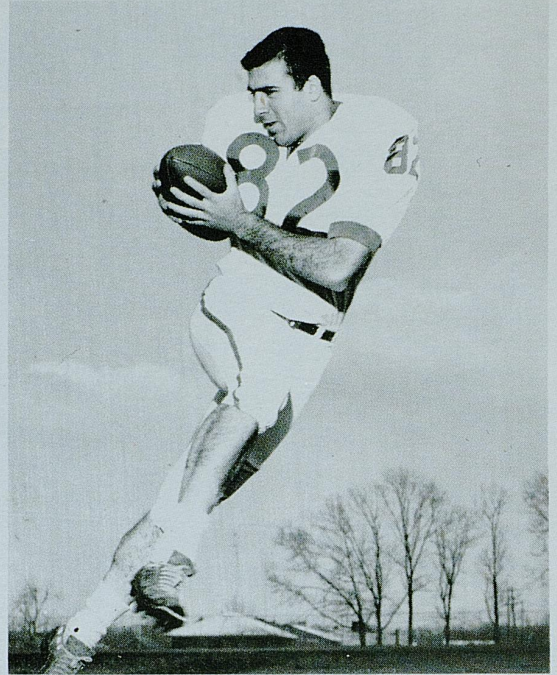
TOM BRYAN — FB



DICK PALMER



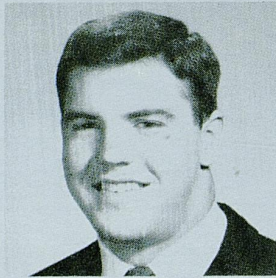
SCOTT VALENTINE



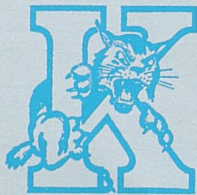
DAN SPANISH



LEONARD RUSH

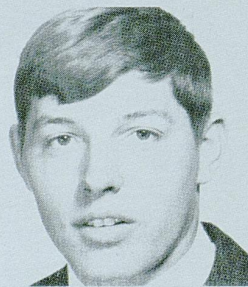


DEREK POTTER

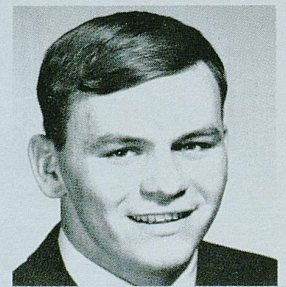


ENTUCKY

DON BRITTON



TOMMY SAUER



WESLEY NAILS



JIM PRATHER



JOE DAVID SMITH

New and "USED" Book Center on Campus
in the
STUDENT CENTER

UNIVERSITY BOOK STORE

UK GLASSWARE

UK SWEATSHIRTS

UK PENNANTS

UK JEWELRY

UK SOUVENIRS

UK DECALS

OPEN AFTER DAY GAMES UNTIL 6 P.M.

CONGRATULATIONS SIR!

DID YOU KNOW THAT YOU &
THE MEN YOU SEE AROUND YOU
ARE AMONG THE BEST DRESSED
MEN IN THIS WHOLE U.S.A.?

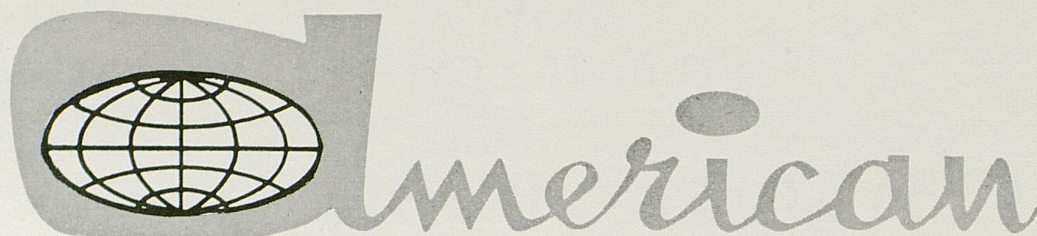
IT'S A FACT! HERETOFORE,
THOSE FAST HORSES & BEAUTI-
FUL WOMEN HAVE STOLEN THE
SHOW, BUT MAYBE THEY ARE
THE STRIKING PROOF OF WHAT
OUR MANUFACTURERS TELL US:

THE BLUE GRASS GENTLEMAN
IS A MOST DISCRIMINATING FELLOW!

AND WE FEEL HONORED TO
HAVE DRESSED SO MANY DISCRIMI-
NATING GENTLEMEN FOR SUCH
A LONG WHILE.



Support U. of K. Football



BUSINESSMEN'S LIFE INSURANCE COMPANY

144 SOUTHLAND DRIVE LEXINGTON, KENTUCKY 40503 PHONE 278-2351

Be A Wildcat Booster

We at HUNT'S are pleased to supply to the University of Kentucky Athletics Association merchandise manufactured by the following firms:

Adidas—Track Shoes

Bike Web Company—Trainer's Supplies

Brunswick—Football Uniforms and Equipment
for Football, Baseball, and all Sports

Cramer Chemical Company—Trainer's Supplies

Fair Play Scoreboard Company—Football Score-
board and Basketball Scoreboard

Hillerich and Bradsby Company—Louisville Slugger
Bats

Johnson and Johnson—Trainer's Tape

King O'Shea Company—Basketball Uniforms

Powers Mfg. Company—Award Jackets

John T. Riddell, Inc.—Football Helmets and Shoes

A. G. Spalding & Bros.—Football and Basketballs

Spanjian of Pasadena—Football and Baseball
Uniforms

Sports Equipment Co.—SECO Athletic Supplies

We are grateful to the above manufacturers who sponsor this ad.

HUNT'S ATHLETIC GOODS CO., INC.

"We Ship The Day You Buy"

MAYFIELD, KENTUCKY

Auburn
University



AUBURN UNIVERSITY



DR. HARRY M. PHILPOTT
President



RALPH JORDAN
Head Coach



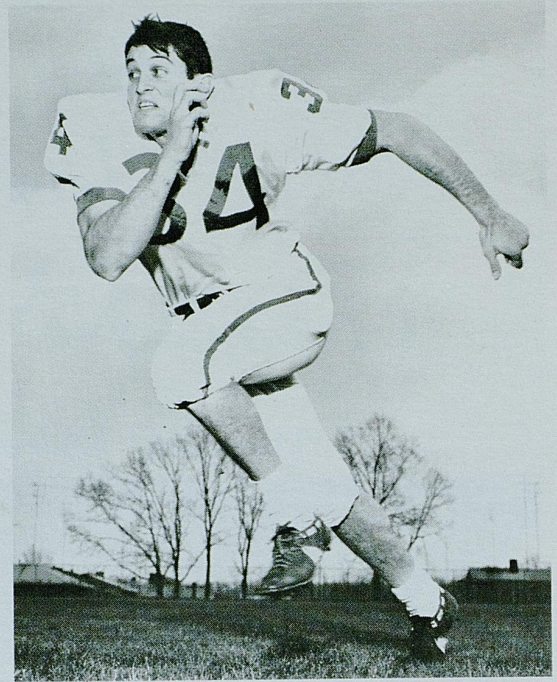
JEFF BEARD
Athletic Director



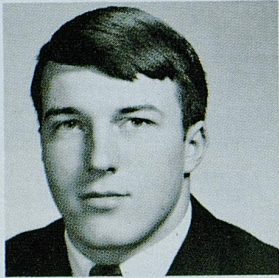
EDDIE INGRAM



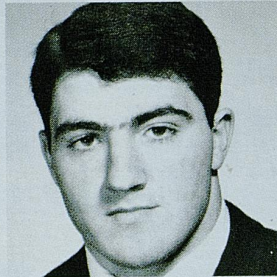
ED ZAREMBA



DICKY LYONS



KEN WOOD



JEFF VAN NOTE



KENTUCKY

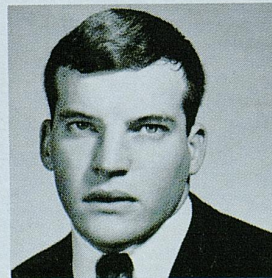
JIM SWART



LOUIS WOLF



JOHN ZELES



DOUG VAN METER



Springs Motel

2020 South Broadway PHONE 277-5751 Lexington, Kentucky

DANCE TO THE MUSIC OF "THE NEPTUNES"

Tuesday through Saturday — 8:00 - 1:00

Dine in the Elegant Setting of "THE POMPEI ROOM"

Cocktail hour — 4:00 - 6:00

LEXINGTON

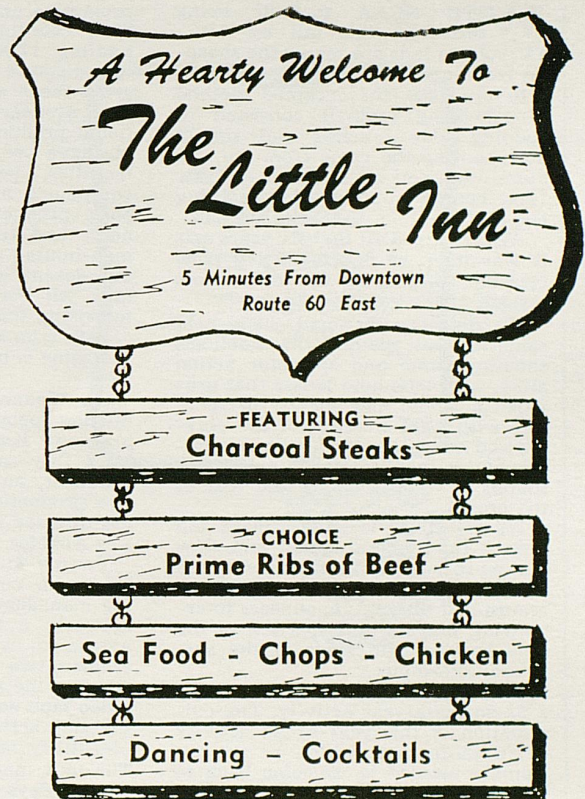
Insurance Agency, Inc.

"Complete Insurance Service"

Kentucky Central Building

Phone

254-6257



Open
Mondays
and
Fridays
'Til 9

Stewart's

Phone or Write
Sally Stewart
Personal Shopper
252-2210



The ABC's of TV

by ROONE ARLEDGE

*Vice President and Executive Producer
of ABC Sports*

WITH NCAA football being broadcast this fall by ABC-TV, college fans are seeing the sharpest techniques in sports telecasting.

Before 1960, the accepted method of televising football consisted of opening four cameras and simply documenting the game from the stadium roof. You sat at home and saw (and heard) nothing more, nothing less.

ABC changed all that six years ago. It was then we developed our concept of "bringing the fan to the game instead of the game to the fan."

We did it with small, hand-held cameras that roamed the sidelines, shooting game and spectator action alike, with telephoto lenses that provided a whole new viewer perspective with tight closeups of the players and officials, with long range microphones that isolated the exciting sounds of football above the roar of the crowd.

We added the isolated camera and instant replay, stop action and slow motion re-runs, end zone cameras and cameras high above the field on cranes and blimps, announcers interviewing players and coaches on the field and colorful shots of the surrounding campus.

At ABC-TV the world of sports is a 52-weeks-a-year activity. The culmination of this year-round activity is NCAA football, which we are extremely pleased to welcome back to the ABC Sports line-up after an absence of several seasons. Starting this September, our production and engineering teams will again pack up millions of dollars worth of electronic equipment and hit the college football trail to locations like Waco, South Bend, East Lansing and Palo Alto to bring viewers the biggest of all continuing sports attractions in America today.

The organization and execution of a football television series is an incredibly complex operation. By mid-week, prior to the first NCAA-ABC telecast, considerable advance work already has been completed. Broadcast plans and game schedules have been approved by the NCAA Television Committee and the network. Contracts have been signed with 49 teams and 13 sponsors; nationwide

promotion and publicity efforts have been coordinated; complex systems totaling 17,000 miles per week of long distance television lines and program feeds around the nation have been arranged; well over 100 additional production and technical people have been hired; the logistics of facilities, personnel and tons of equipment have been worked out; basic production planning meetings held; and thousands of specialized man-hours consumed in working out dozens of other pre-season details. All that remains is the job of televising the events!

Let's take a typical situation where the game is being played in the Midwest.

On Wednesday evening five production people are rushing for a plane at Kennedy airport in New York City—a producer, an associate producer, an associate director and two production assistants. The camera director is already en route from Los Angeles.

Twenty-four hours ago the technical group, consisting of an engineering management supervisor from the network, a technical director, four videomen, two audiomen, seven cameramen, two driver/maintenance men for the mobile control unit, two video tape engineers, an engineer for the stop action device and three cable/utility men, arrived on location. The unit manager has been in town for two days checking production arrangements. Tomorrow three announcers will fly in, plus another producer and assistant who have the separate responsibility of handling the pre-game program.

The mobile unit, a \$1,500,000 color TV station on wheels, was driven 700 miles from last week's game location and is now parked and hooked up to power at the stadium. Several members of the local telephone company are on hand to install special phone lines and broadcast audio and video circuits.

Before airtime on Saturday afternoon, the entire technical crew alone will have spent close to 1,000 man-hours in travel, hard labor and skilled workmanship in setting up and checking out color cameras, zoom lenses, microphones, headsets,

tape machines, cables and monitors. In the meantime, the production staff will be holding continuous meetings, while the announcers do homework on statistics, biographies, players and team defense and offense.

To give you an idea of what goes on at airtime, let's take a quick look at just the internal communications system needed for a football telecast.

To begin with, there are interconnecting phone lines from the producer in the mobile unit to the announcers and production assistants, both in the press box and on the field, in addition to the area where the visual scoring and identification devices are located. The Associate Director who will handle the relaying of cues is connected to the Producer's circuit, and also to the coordinating studio in Chicago.

Another circuit connects the Director to each of the seven cameramen and the stop action engineer; another from the Technical Director to the videomen who control the quality of the individual camera pictures.

There's a private line from the engineering supervisor to network master control and another from the Producer to the Associate producer who is stationed at a pair of videotape recorders in a local TV station five miles away to coordinate slow motion and instant replay.

As you can imagine, it requires highly professional teamwork from all concerned to insure that this kind of set-up functions smoothly and correctly during the broadcast. I am happy to say that it usually does.

These and other innovations in production methods and techniques have revolutionized TV football coverage and certainly increased enjoyment of the game to the fans at home.

Actually, nothing can replace the thrill of being at the game itself. But football and television have always been ideal partners and it's a safe bet that you'll be watching many of the NCAA football contests this year (most of them in color) as guests of ABC's 215 affiliated stations.

We'll be expecting you.

BECKER

Laundry—Dry Cleaning, Inc.

5 Convenient Locations

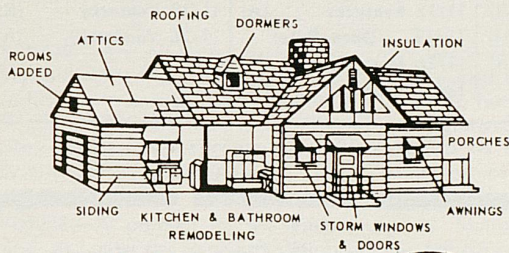
Main Plant — S. Limestone and Euclid Avenue
4th Street and N. Broadway Walton and Aurora Avenue S. Limestone and Vine Southland Shopping Center

NOBODY can Launder a Shirt like BECKER

Claude McGaughey, Jr., President — U.K. Grad — Class '48

For All Types of Remodeling
Commercial or Residential

"Your Best Bet is Cornett"



Dial 252-5036

Recreation Rooms — Garages
Custom Kitchens — Room Additions



Cornett Construction Co.

1077 S. Broadway

Lexington, Ky.

Borden's

ICE CREAM

Throughout
Central Kentucky



576 E. Third St. — Phone 254-2855



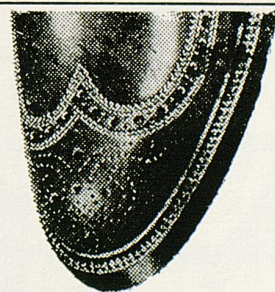
*FRENCH
SHRINER*

Outstanding.
COMFORT,
QUALITY
& STYLE

SHOES FOR MEN

BAYNHAM'S

135 East Main Street



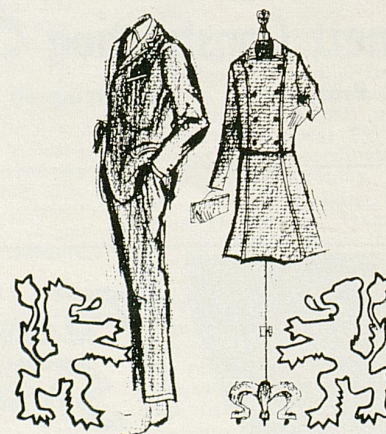
WHAT KENTUCKY OPPONENTS ARE DOING

N. CAROLINA (1-1) 0 Kentucky (A) 10 10 N.C. State (H) 7 10/1 Michigan (A) 10/8 (Open Date) 10/15 Notre Dame (A) 10/22 Wake Forest (H) 10/29 Georgia (A) 11/5 Clemson (A) 11/12 Air Force (H) 11/19 (Open Date) 11/26 Virginia (H)	MISSISSIPPI (2-0) 13 Memphis St. (A) 0 17 Kentucky (N) 0 10/1 Alabama (N) 10/8 Georgia (A) 10/15 Sou. Miss. (H) 10/22 Houston (N) 10/29 L. S. U. (A) 11/5 (Open Date) 11/12 Tennessee (A) 11/19 Vanderbilt (N) 11/26 Miss. St. (H)	AUBURN (1-1) 20 Chattanooga (H) 6 0 Tennessee (N) 28 10/1 Kentucky (A) 10/8 Wake Forest (H) 10/15 Georgia Tech (N) 10/22 T. C. U. (H) 10/29 Florida (A) 11/5 Miss. State (N) 11/12 Georgia (A) 11/19 (Open Date) 11/26 (Open Date) 12/3 Alabama (N)	VIRGINIA TECH (1-1) 0 Tulane (A) 13 49 Geo. Wash. (H) 0 10/1 West Virginia (H) 10/8 Kentucky (A) 10/15 Vanderbilt (N) 10/22 Virginia (A) 10/29 Florida State (H) 11/5 Wake Forest (A) 11/12 Wm. & Mary (A) 11/19 (Open Date) 11/24 V.M.I. (A)	LOUISIANA ST. (1-1) 28 So. Carolina (H) 12 15 Rice (A) 17 10/1 Miami (H) 10/8 Texas A&M (H) 10/15 Kentucky (A) 10/22 Florida (H) 10/29 Mississippi (H) 11/5 Alabama (N) 11/12 Miss. St. (H) 11/19 Tulane (A)
GEORGIA (2-0) 20 Miss. State (N) 17 43 V.M.I. (A) 7 10/1 So. Carolina (A) 10/8 Mississippi (H) 10/14 Miami (A) 10/22 Kentucky (H) 10/29 No. Carolina (H) 11/5 Florida (N) 11/12 Auburn (A) 11/19 (Open Date) 11/26 Georgia Tech (H)	WEST VIRGINIA (1-1) 15 Duke (A) 34 24 Wm. & Mary (H) 13 10/1 Virginia Tech (A) 10/8 Pitt (A) 10/15 Maryland (A) 10/22 Penn State (H) 10/29 Kentucky (H) 11/5 The Citadel (H) 11/12 Geo. Wash. (A) 11/19 Syracuse (H)	VANDERBILT (1-1) 24 The Citadel (H) 0 0 Georgia Tech (A) 42 10/1 Florida (H) 10/8 (Open Date) 10/15 Va. Tech (N) 10/22 Alabama (N) 10/29 Tulane (H) 11/5 Kentucky (A) 11/12 Navy (H) 11/19 Ole Miss (N) 11/26 Tennessee (H)	HOUSTON (2-0) 21 Florida State (A) 13 21 Wash. State (H) 7 10/1 Oklahoma St. (H) 10/8 (Open Date) 10/15 Miss. St. (H) 10/22 Mississippi (N) 10/29 Tampa (H) 11/5 Tulsa (H) 11/12 Kentucky (A) 11/19 (Open Date) 11/26 Memphis St. (H) 12/3 Utah (H)	TENNESSEE (1-0) 28 Auburn (N) 0 10/1 Rice (H) 10/8 Georgia Tech (A) 10/15 Alabama (H) 10/22 So. Carolina (H) 10/29 Army (N) 11/5 Chattanooga (H) 11/12 Ole Miss (H) 11/19 Kentucky (H) 11/26 Vanderbilt (A)

Kennedy Book Store

U.K. Shirts — Pennants — Decals
Textbooks — School Supplies

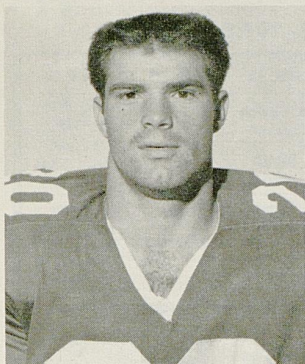
"Your Store for Traditional Wear"
Our Customers Set the Fashion Pace
Visit Us Soon and Often
Located Next to Kennedy's Book Store



The University Shop

OHIO U. EASTERN KY. U.
PURDUE U. FLORIDA U.
OHIO STATE U. MIAMI U. (O.)
BOWLING GREEN S.U. U. of KENTUCKY

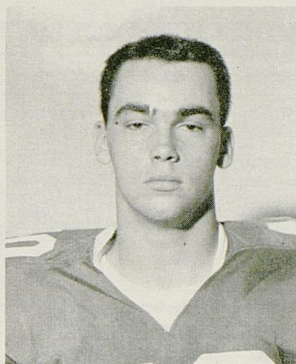
MEET THE "KITTENS"



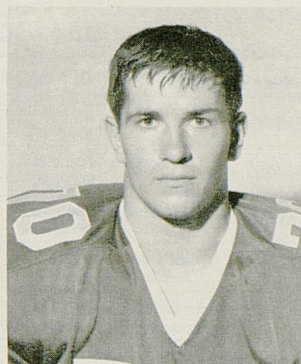
ABBOTT



BAIR



BORNE



BOULWARE

BOBBY ABBOTT—During a star-studded career in Volunteerland (Kingston, Tenn.), Bobby helped his team to two undefeated seasons and picked up personal honors as an All-State selection . . . He became the first freshman to win All-Conference and to take top scorer honors in the Tri-County league . . . Gained 4,975 yards in career . . . Plans to study art.

DAVE BAIR—An All-State quarterback from Greensburg, Pa., Bair aided his high school teams to successful grid records in his last two years . . . Passed for 1,700 yards, hitting on 99 out of 200 attempts . . . Also proved outstanding schoolboy pitcher as he compiled a 20-2 record to materially aid team in winning three straight championships.

AL BORNE—A product of ex-Wildcat Johnny Maihaus' coaching at Louisville St. Xavier High, Borne (pronounced Bor-Nay) is classed as a top halfback prospect who can go either offensively or on defense . . . Blessed with good speed as indicated by a regional record time of 23.1 seconds in the 220-yard dash and a clocking of 9.9 in the 100.

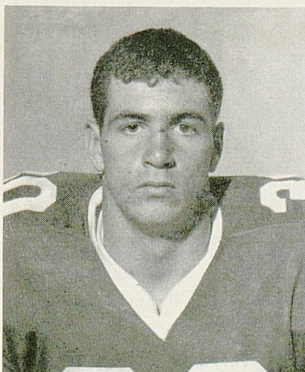
MIKE BOULWARE—Grabbed virtually out of the backyard of Ohio State, Boulware is a promising interior line prospect hailing from Columbus, Ohio . . . He was an All-District selection as he led his Bishop Watterson High team to an undefeated season as its captain in 1965 . . . Team won league title every year but one during his career.

JIM BROADWATER—Starred as a fullback and defensive end at Pennsburg High School in Fairless Hill, Pa. . . . Captained his team in 1965 as the Falcons posted a 9-1-0 record in strong competition . . . Mentioned on the All-State team and also participated in track and weightlifting . . . A brother played at Western Carolina.

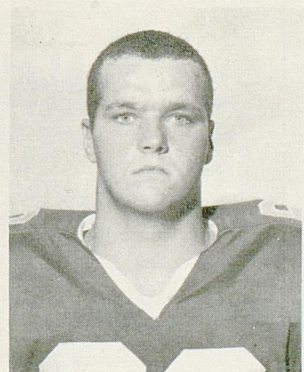
FRED CONGER—This Keystone State husky from Feasterville, Pa., never played on a losing team and picked Kentucky over 40 other schools seeking his services . . . Played in Big 33 Game and won All-State honors . . . Had 138 tackles in one year . . . Good student whose favorite subject is physics . . . Plans to play pro ball or coach.

BILL DUKE—Aspires to be a top football player and to become an aerospace engineer upon graduation . . . Played his high school football at Daviess County High in Owensboro under tutelage of former Kentucky Wildcat Waymond Morris . . . Won MVP nomination on his team two years . . . Halfback candidate.

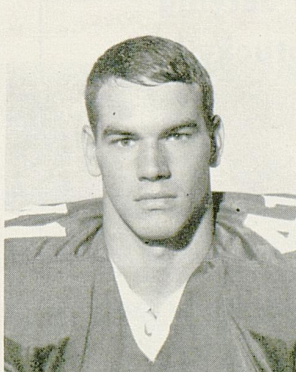
PAT ECKENROD—Started his football career in fifth grade and wound up seven years later with award as best player in Chattanooga (Tenn.) high school ranks . . . Attended Notre Dame High where played center and defensive tackle . . . Honored as All-State center selection and mention as All-Southern and All-America.



BROADWATER



CONGER



DUKE



ECKENROD

1966—SOUTHEASTERN CONFERENCE FOOTBALL SCHEDULE—1966

WEEK-END	SEPT. 17	SEPT. 24	OCT. 1	OCT. 8	OCT. 15	OCT. 22	OCT. 29	NOV. 5	NOV. 12	NOV. 19	NOV. 26
ALABAMA		La. Tech Birmingham*	Ole Miss Jackson*	Clemson Tuscaloosa	Tennessee Knoxville	Vanderbilt Birmingham	Miss. State Tuscaloosa	L.S.U. Birmingham-T	So. Carolina Tuscaloosa		Sou. Miss. Mobile
AUBURN	Chattanooga Auburn	Tennessee Birmingham	Kentucky Lexington*	Wake Forest Auburn	Ga. Tech Birmingham	T.C.U. Auburn	Florida Gainesville	Miss. State Jackson	Georgia Auburn		Auburn-T Dec. 3 - B'ham Alabama-T
FLORIDA	Northwestern Gainesville	Miss. State Gainesville	Vanderbilt Nashville	Fla. State Tallahassee	N. C. State Raleigh	L.S.U. Baton Rouge*	Auburn Gainesville	Georgia Jacksonville	Tulane Gainesville		Miami Gainesville
GEORGIA	Miss. State Jackson*	V.M.I. Roanoke*	So. Carolina Columbia*	Ole Miss Athens	Miami Miami#	Kentucky Athens	No. Carolina Athens	Florida Jacksonville	Auburn Auburn		Ga. Tech Athens
KENTUCKY	No. Carolina Lexington*	Ole Miss Jackson*	Auburn Lexington*	Va. Tech Lexington*	L.S.U. Lexington*	Georgia Athens	W. Virginia Morgantown	Vanderbilt Lexington	Houston Lexington	Tennessee Knoxville-T	
L.S.U.	So. Carolina Baton Rouge*	Rice Houston*	Miami Baton Rouge*	Texas A&M Baton Rouge*	Kentucky Lexington*	Florida Baton Rouge*	Ole Miss Baton Rouge*	Alabama Birmingham-T	Miss. State Baton Rouge-T	Tulane New Orleans*	
MISSISSIPPI	Memphis St. Memphis*	Kentucky Jackson*	Alabama Jackson*	Georgia Athens	Sou. Miss. Oxford	Houston Memphis	L.S.U. Baton Rouge*		Tennessee Knoxville	Vanderbilt Jackson	Miss. State Oxford
MISS. STATE	Georgia Jackson*	Florida Gainesville	Richmond Starkville	Sou. Miss. Starkville	Houston Houston*	Fla. State Tallahassee*	Alabama Tuscaloosa	Auburn Jackson	L.S.U. Baton Rouge-T		Ole Miss Oxford
TENNESSEE		Auburn Birmingham	Rice Knoxville	Ga. Tech Atlanta-T	Alabama Knoxville	S. Carolina Knoxville	Army Memphis	Chattanooga Knoxville	Ole Miss Knoxville	Kentucky Knoxville-T	Vanderbilt Nashville
VANDERBILT	The Citadel Nashville*	Ga. Tech Atlanta	Florida Nashville*		Va. Tech Richmond	Alabama Birmingham	Tulane Nashville	Kentucky Lexington	Navy Nashville	Ole Miss Jackson	Tennessee Nashville

*—Night #—Friday Night

T—Television

Dixie Bell Dairy Company

**"The Largest and Only Locally
Owned Dairy Serving
Central Kentucky"**



**315 North Limestone Street
LEXINGTON, KY.**

Places of Interest To Visit In Lexington:

Henry Clay Home Big Red Mile
Hunt Morgan House Horse Farms
Keeneland Race Course

And

WENNEKERS

153-155 East Main Street

*Where Sports Celebrities Make Their
Headquarters*

Save Money on Nationally Advertised Shoes

Prices You Can Afford

R

"No Order Too Small"

R

Sageser Drugs

R

"Ask Your Doctor"

R

CARRY OUT ORDER SERVICE

Phone 277-5211 — We'll have your
order in a jiffy — Piping hot.



Italian

Spaghetti

Pizza

Steaks

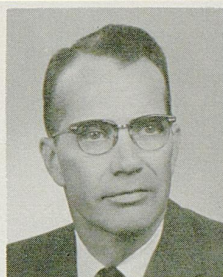
Ruben Sandwiches

"DOODLES"

1915 South Lime

Phone 277-5211

Restaurant-Cocktail Lounge



MILLER WELCH



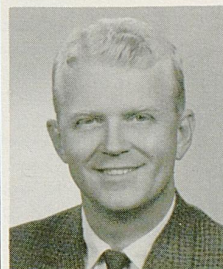
CHARLES LEAR

CARPENTER-WARREN

INSURANCE AGENCY

Since 1927

137 N. Upper St. PHONE 252-4155 Lexington, Ky.



DONALD ROSE

ALL FORMS
OF INSURANCE



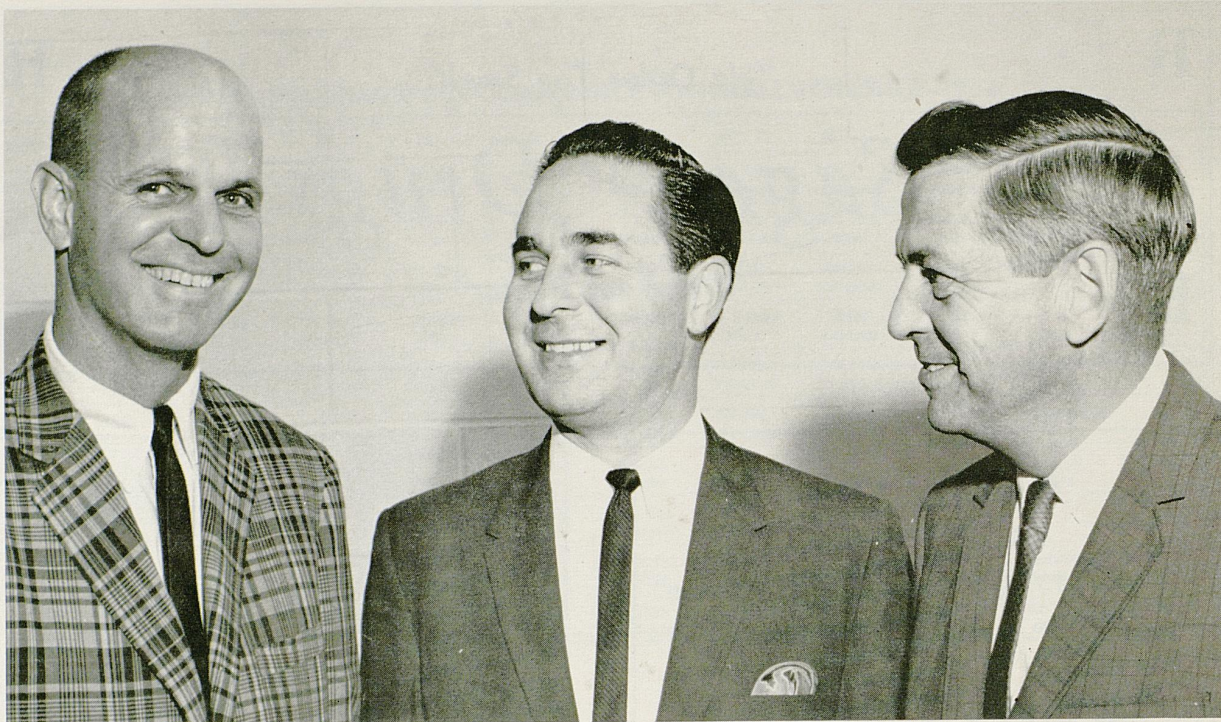
LEXINGTON PHOTO ENGRAVING CO.

223 W. Short
Tel. 255-5015

If your **GOAL** is
"Fast Production — Fine Reproduction"
for your printing needs,
RUSH to left **GOAL** for letterpress plates,
or
RUSH to right **GOAL** for offset plates.
Let us **TACKLE** your plate-making to **END**
your problems. **PASS** them to our **CENTER**
and you will **GUARD** against a **KICK** in the
final **RUN**.

LEXINGTON PHOTO LITH INC.

223 W. Short
Tel. 255-5015



LEXINGTON QUARTERBACK-TIPOFF CLUB—With a dedicated membership of nearly 300, the Lexington Quarterback-Tipoff Club annually is one of the most active supporting organizations behind the University of Kentucky's athletic program. The group, made up of vitally-interested Lexington and central Kentucky business and professional men, performs many functions in aid of the coaching staffs of football and basketball. Among these are the welcoming and guiding visiting prospects to make their stay in the Blue Grass a memorable one. Current officers of the club, pictured above, are Kermit Little (center), President; Ted Bates (left), vice-president; and Ed Williams, secretary. Missing when the picture was taken was Steve Rardin, Treasurer. Bill Faulkner, insert left, acts as Athletic Coordinator between the club and UK coaches. The club meets weekly during the football and basketball seasons to hear comments from Coaches Charlie Bradshaw and Adolph Rupp. Game highlight films also are shown.

Boosting the Wildcats to Success

Few athletic teams on any level today enjoy the sweet taste of success without the help of various non-athletic groups who give freely of their time and energy to boost their favorites to great accomplishments.

University of Kentucky is very fortunate to have the friendly assistance of several such groups in support of its teams. Operating within the strict bounds of official rules to provide all-important help are such organizations as U-KATS, the Quarterback-Tipoff Club, K-Men's

Association, UK Committee of the Chamber of Commerce and formerly the Lexington Salesmen's Club.

Athletic officials of the University—Director of Athletics Bernie A. Shively and his staff—as well as the coaches and the young men who are either team members or prospective Wildcats—sincerely appreciate the public-spirited assistance given by these private groups of citizens. To them, this page is dedicated.

Mystery Wildcats

(Outstanding UK Gridders of the Past — Identification Below)



WALLACE JONES

Although perhaps better known and remembered as a star member of the Kentucky basketball team during the "Fabulous Five" Era, this pass-snaring end performed equally well on the gridiron. The Kentucky native won four letters in football and was accorded All-Southeastern Conference recognition.

This former Wildcat should not be too hard to guess since he was a part of the first and only twin brother act in Kentucky football. He performed at halfback in the early fifties, wearing the unique jersey number 1A. His brother was identified by 1B on his jersey.



HARRY JONES

Preview of Coming Attractions

KENTUCKY vs. VIRGINIA TECH

Playing One Week From Tonight On Stoll Field

COACH—Jerry Claiborne (Won 30, Lost 19, Tied 0)

1965 Record—Won 7, Lost 3

Last Year's Score—No Game Played

Series—Wildcats lead, 3-1-2

Chief Losses—QB Bobby Owens, G John Sheehy, C Les Hanly, LB Billy Edwards, DG Mike Saunders.

Top Returnees—HB Tommy Francisco (Sr.); HB Dickie Longerbeam (Jr.); E Gene Fisher (Jr.); E Ken Barefoot (Jr.); DT-DG Sands Woody (Sr.); DE George Foussekis (Jr.); S Frank Loria (Jr.).

Sophs to Watch—DT Jim (Waddey) Harvey.

OUTLOOK—Kentuckian Jerry Claiborne has Virginia Tech football firmly established on a solid, winning foundation and his building program should show better results than ever this year. Thirty lettermen are among the holdovers and Claiborne is optimistic over the strong potential of his freshman team graduates. The defense seems to be in the best shape as Tech tackles an ambitious schedule. Only two vacancies occurred in the unit that opened last season—at linebacker and guard. Heading the '66 defense will be senior tackles Sands Woody (210) and Andy Bowling (6-3, 220). Backing up the formidable defense will be a completely experienced offensive combination built around senior tailback Tommy Francisco—the team's leading returning rusher. Other likely offensive stars are junior halfback Dickie Longerbeam and flankmen Gene Fisher and Ken Barefoot (6-5, 228)—who between them hauled in 50 passes last season. Only three offensive starters were lost, but one who will be sorely missed is quarterback Bobby Owens.



COACH
JERRY CLAIBORNE



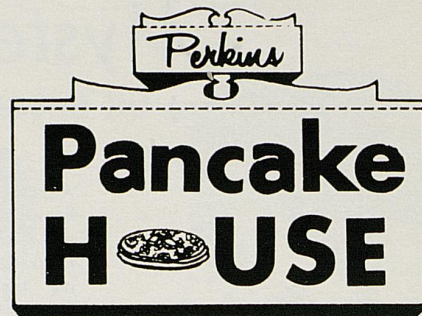
TOMMY FRANCISCO
Tailback

BALL HOMES INC.

*Homes of Distinction
At a Moderate Price*

254-7777

1316 Versailles Road, Lexington



- 28 Different Varieties of Pancakes & Waffles
- Businessman's Luncheon Mon. thru Friday
- Steaks, Chops, Chicken, Seafood Also Available
- Dine In An Early American Atmosphere
- Special Family Nights & Childrens Portions
- Informal, Friendly Service
- Private Dining Room For Parties Clubs, Banquets, Etc.

BILL ELLIS — Manager

DIAL — 254-7835

Located On U.S. 27 At S. Lime and Rose Sts.
Across From U. of Ky. Medical Center

*"Stop in Whenever Your Appetite
Craves a Treat"*

SOUTHLAND SPORT SHOP

Distributors of

Riddell, Rawlings, Wilson, and Spalding Sporting Goods

Adidas Track Shoes Speedo Cramer Products

Plenty of Free Parking Space

Gene Stokley — In The Southland Shopping Center — Dick Wallace

P.O. BOX 8251

PHONE 277-3977

Second National Bank & Trust Co.

123 Cheapside, Lexington, Ky.

BRANCH BANK LOCATIONS:

2225 Nicholasville Road, 286 New Circle Road N.W., 1718 Alexandria Drive

**REMEMBER: *Safety Is Our Inherent Way,
Saving Is Your Touchdown Play.***

UNIVERSITY OF KENTUCKY

“WILDCAT”

FRED M. DART *Director*

JOHN CARR .. *Assistant Director*

BRIAN GORRELL *Drum Major*

JOHN EDMONSON *Arranger*

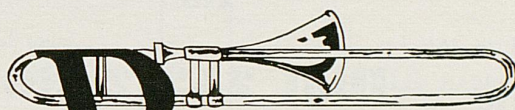
JOHN TATGENHORST *Arranger*

JERRY GRADY *Arranger*

GLENN TAYLOR *Artist*



MARCHING



BAND



Theme of Today's Show

“MEMORIES OF STEPHEN FOSTER”

<i>Formation</i>	<i>Music</i>
3 COMPANY FRONTS	Swanee River Fanfare Camptown Fanfare
STEAM BOAT	Swanee River March
CONCERT FORMATION	I Dream of Jeannie Beautiful Dreamer Massa's in the Cold, Cold Ground
2 STICK FIGURE HORSES	Camptown Races
MAP OF KENTUCKY	My Old Kentucky Home
WILDCATS	Alma Mater

HOWARD JOHNSON'S
Motor Lodge



TWO LOCATIONS
Nicholasville Road, U.S. 27, South
Phone 277-1191, Lexington, Kentucky
and
North Broadway, U.S. 27, North
Phone 299-1202, Lexington, Kentucky

LANDMARK FOR SLEEPY AMERICANS

Lexington Yellow Cab Co.

Inc.

ALL
RADIO CABS

Dial 252-2230

ALL
RADIO CABS

ROY ALEXANDER
Rifle



BUSTER BROWN
FB Equip. Mgr.



C. W. BRUNER
Fields Supt.



HARVEY HODGES
Ticket Mgr.



BOB JOHNSON
Track



KEN KUHN
Information Dir.



WILDCAT HEAD COACHES AND ATHLETICS STAFF



AL MORGAN
Supervisor
Student Admissions



WYNN PAUL
Swimming
Water Polo



ADOLPH RUPP
Basketball



JOE SHANNON
Baseball



DICK VIMONT
Tennis



HUMSEY YESSIN
Golf

Flying Somewhere?

Contact . . .

All-American Tours Inc.

(Lexington's largest travel agency—established 1932)

Phoenix Hotel — Telephone 255-6780

. . . Where you get information on ALL airlines by one call or visit. There is no service charge.

——— ALSO ———

We have an attractive program of tours and cruises to all parts of the world.



145 N. UPPER ST.
1220 HARRODSBURG RD.

You're Always Welcome At . . .



WALGREEN AGENCY DRUG STORES

IN LEXINGTON

- ★ 69 Eastland Shopping Center
- ★ Northland Shopping Center
- ★ 878 East High Street
- ★ 404 Southland Drive
- ★ 1743 Alexandria Drive

SERVING THE BEST
IN
DRUG STORE NEEDS
SINCE 1921

16 DRUG STORES IN KENTUCKY

"Last Year

*Was a Very Good Year"
But This Year Will Be
Better!*

GO CATS 1966

And Shop

WALLACE'S

A few steps more mean
more for your books and
more for your money

S. Lime at Euclid Ph. 252-8753

U.K. Development Council Seeks the Margin of Excellence

A public university is charged with a multitude of responsibilities. The world of the scholar has its center within the bounds of the University. The impossible, the improbable, the sought for answers lie just beyond and then within sight of those who follow the threads of truth wherever they lead. Imparting the lessons of old and new discoveries to succeeding generations occurs in classrooms and laboratories or in the dialogue of teacher and student.

Research in its purest form resides properly here, the pursuit of the disciplined mind—without the goad of immediate practical application.

The role of servant to the Commonwealth is fulfilled from the banks of the Big Sandy to the mighty Mississippi in the life of every man. The University of Kentucky serves through experimental farms, community colleges, home demonstration, agricultural extension, community medicine, government and economic research. Its greatest service lies in holding open the doors of higher education to all Kentuckians regardless of number.

Funds to provide basic program in these areas comes from the citizens of the Commonwealth of

Kentucky through legislative appropriation, from the students paying their fees, from certain federal programs which support key projects, and smaller amounts from a number of organizations who have an interest in the achievements to be made by the University.

Missing have been the funds for that quality described as "the margin of excellence." These are the funds which provide unusual teaching or research opportunities; scholarships for the student in need, fellowships to encourage graduate study, additional salary to retain or attract the great scholar and teacher, equipment which may have limited use and cultivation and encouragement of the arts.

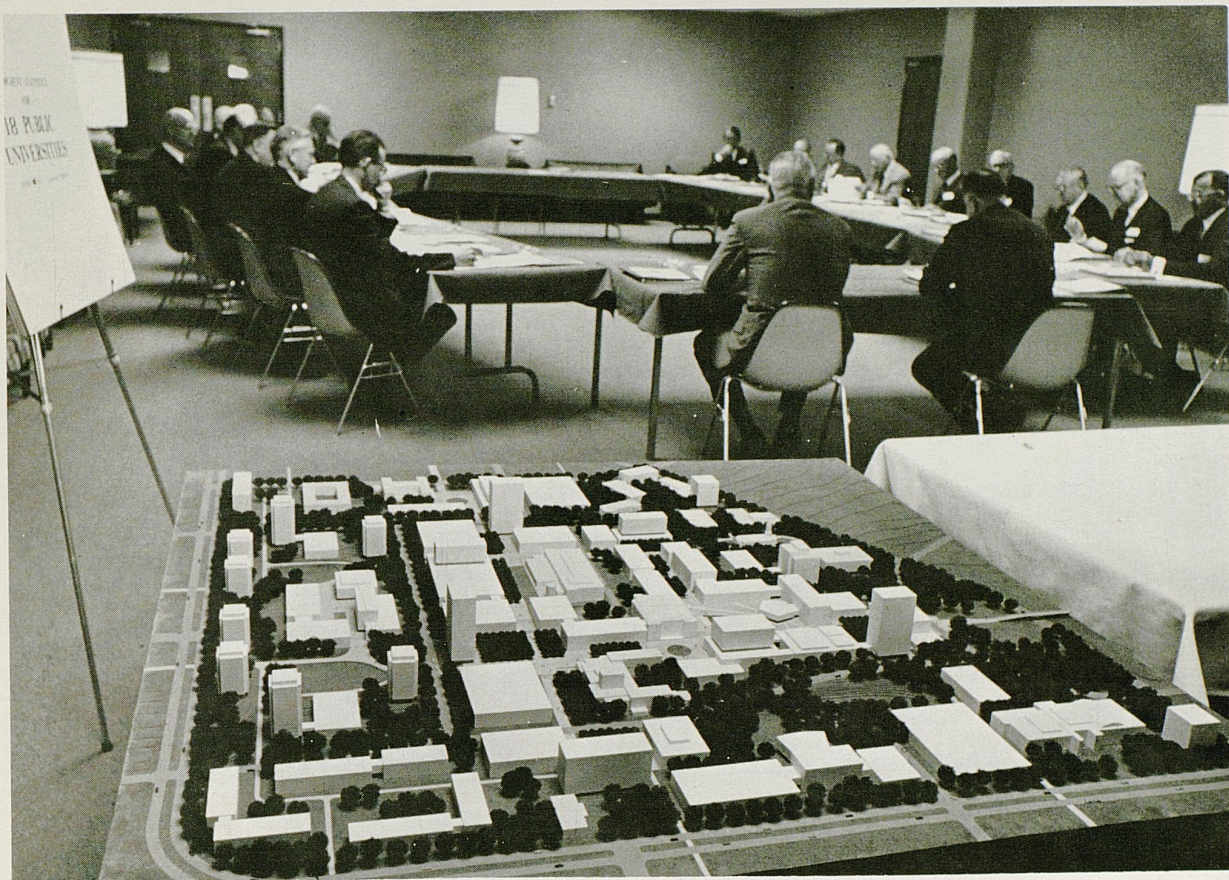
The great universities in our time, both public and private, enjoy the benefits of individual and corporate philanthropy in significant amounts. The private donor through his vision and generosity has helped to move these universities beyond necessity into enrichment and greatness.

President John W. Oswald has stated that the University of Kentucky at the beginning of its second century stands on the *threshold of greatness*.

*U.K. Development Council Members (left to right)
James S. Hudnal, '21, Geologist, Tyler Texas;
Wickliffe B. Moore, '24, President, Price Paper Company, New York, New York; Jesse W. Tapp, '20,*

Retired Chairman, Bank of America, Los Angeles, California; L. Berkley Davis, '34, Vice President, General Electric Company, Washington, D. C.





University of Kentucky Development Council in its First Meeting. (Back to camera) C. R. Yeager, '32,

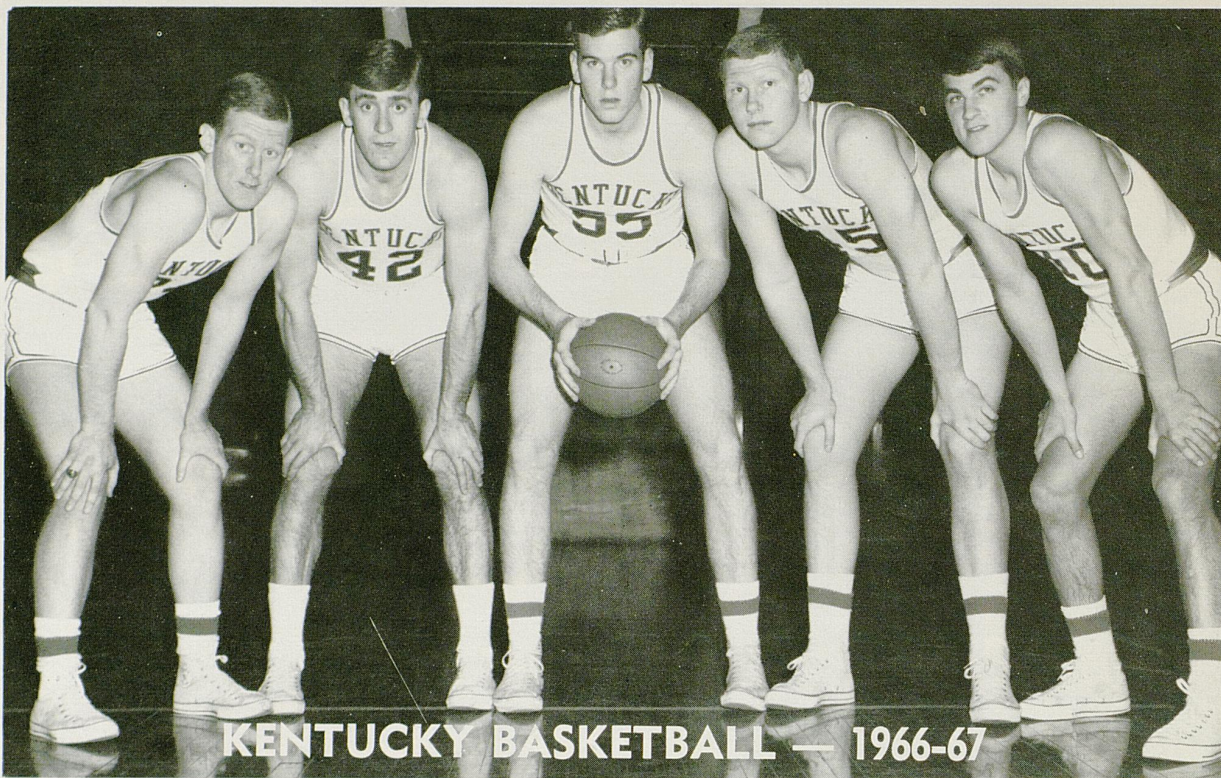
Chairman, Attleboro, Mass., Dr. John W. Oswald, President.

A new academic program, a house in order, encouraging support from the Commonwealth, all augur well for a measurable impact on the University's second century.

The Board of Trustees of the University of Kentucky, in order to begin the University's move beyond necessity into enrichment, established the University of Kentucky Development Council. It is the responsibility of the Development Council to serve in an advisory capacity to the President of the University and the Board of Trustees for all private fund development. Although membership on the Council is concentrated in Kentucky, one-third of the membership is composed of University alumni from Massachusetts to California. C. R. Yeager '32, President of L. G. Balfour and Company, Attleboro, Massachusetts serves as Chairman of the Development Council. Vice Chairman is L. Berkley Davis '34, Washington, D. C., Vice President of the General Electric Company, and General Manager of its Defense Programs Division.

Although the University needs a number of projects which only the gift dollar can achieve, the major need lies in the necessity to increase significantly the permanent endowment of the University. (The University's permanent endowment is invested, and only the income annually is used in support of University program.) Included in the University's permanent endowment are funds to attract and retain the great scholar and teacher as a permanent member of the University's faculty, funds to support the graduate student in his studies, and funds to provide the many scholarships necessary for the undergraduate student.

The trustees and staff of the University of Kentucky with the able assistance of the University's many friends and volunteer workers such as those on the Development Council are determined to cross the threshold of greatness in the University's second century. A major impact on a century is a Herculean assignment. To try less is a measure unacceptable.



KENTUCKY BASKETBALL — 1966-67

**UNIVERSITY OF KENTUCKY
BASKETBALL SCHEDULE — 1966-67**

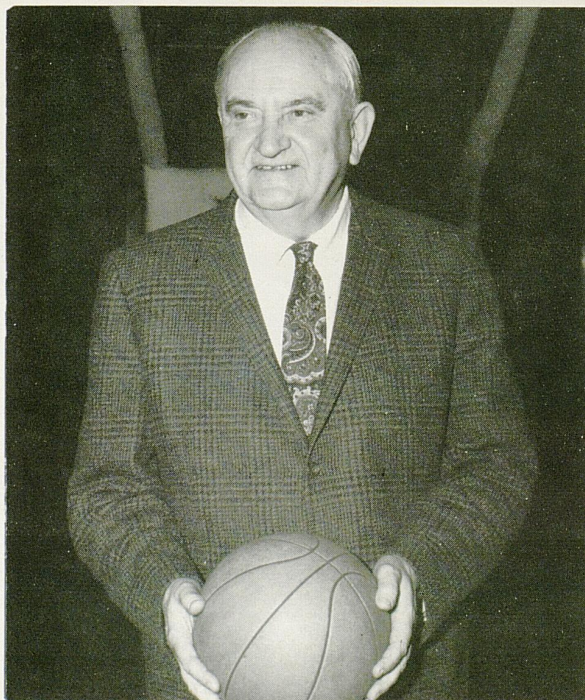
1966

Dec. 3 (Sat.)	Virginia	Lexington
Dec. 5 (Mon.)	Illinois	Lexington
Dec. 10 (Sat.)	Northwestern	Evanston
Dec. 13 (Tue.)	North Carolina	Lexington
Dec. 17 (Sat.)	Florida	Lexington
Dec. 22 (Thurs.)	U.K.I.T.	Lexington
Dec. 23 (Fri.)	(Penn State, Kansas State, Oregon State, Kentucky)	
Dec. 28 (Wed.)	Cornell	Lexington
Dec. 31 (Sat.)	Notre Dame	Louisville

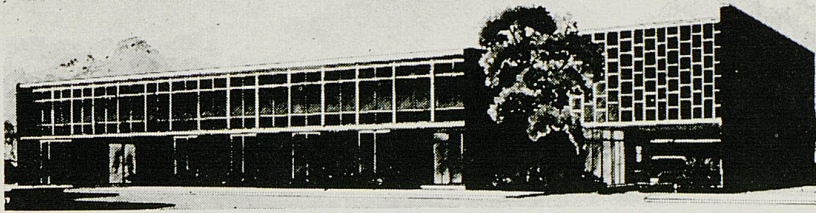
1967

Jan. 5 (Thurs.)	Vanderbilt	Lexington
Jan. 14 (Sat.)	Florida	Gainesville
Jan. 16 (Mon.)	Georgia	Athens
Jan. 21 (Sat.)	Auburn	Lexington
Jan. 23 (Mon.)	Tennessee	Lexington
Jan. 28 (Sat.)	Louisiana State	Lexington
Jan. 30 (Mon.)	Mississippi	Lexington
Feb. 4 (Sat.)	Louisiana State	Baton Rouge
Feb. 6 (Mon.)	Mississippi	Oxford
Feb. 11 (Sat.)	Mississippi State	Lexington
Feb. 13 (Mon.)	Tennessee	Knoxville
Feb. 18 (Sat.)	Mississippi State	Starkville
Feb. 20 (Mon.)	Georgia	Lexington
Feb. 25 (Sat.)	Alabama	Tuscaloosa
Feb. 27 (Mon.)	Auburn	Auburn
Mar. 4 (Sat.)	Vanderbilt	Nashville
Mar. 6 (Mon.)	Alabama	Lexington

The group pictured above seems the most likely choice as a starting combo for 1966-67. From the left are Bob Tallent, All-America Pat Riley, SEC Soph of the Year Thad Jaracz, 6-8 Cliff Berger and All-America Louie Dampier. Baron Adolph Rupp (below) starts his 37th season at UK as the nation's winningest cage mentor.



The Downtowner Motor Hotel



LEXINGTON'S FINEST — 155 ROOMS — RESTAURANT — COCKTAIL LOUNGE — CONFERENCE ROOMS
PARK AT YOUR FRONT DOOR — TV — HI-FI — RADIO — PHONES — SWIMMING POOL
347 EAST MAIN — JUST EAST OF ROSE

Two Big, Modern Department Stores To Shop In

BEN SNYDER

DOWNTOWN • EASTLAND SHOPPING CENTER

Open a Ben Snyder Charge Account for Fast, Easy Shopping

"IRRESISTIBLE" Your Home in Modern, Provincial

or Early American, by . . .



Established
1893

ROBERTS
Furniture Company

• Open Monday Night
to 9 . . . for Your
Shopping Pleasure!

425 W. MAIN • FREE PARKING AT SIDE DOOR

MAGNA-GRAPHIC

INC.

MANUFACTURERS OF FINE PRINTING PLATES

*Offset — Photo-Engravings — Matrices
Four Color Process Separations*

430 WEST SHORT ST.

LEXINGTON, KY.





Why wait for her to pout?
VOLUNTEER...to take her out
for dinner at **Jerry's** Restaurant

Listen to U of K Warm-Up Time with Cawood Ledford
ON WHAS 840 RADIO
Brought To You By Jerry's

