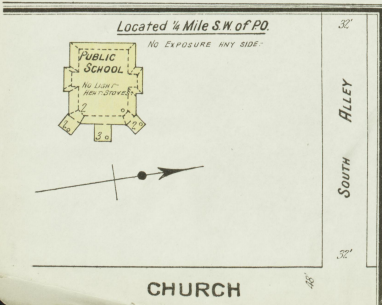
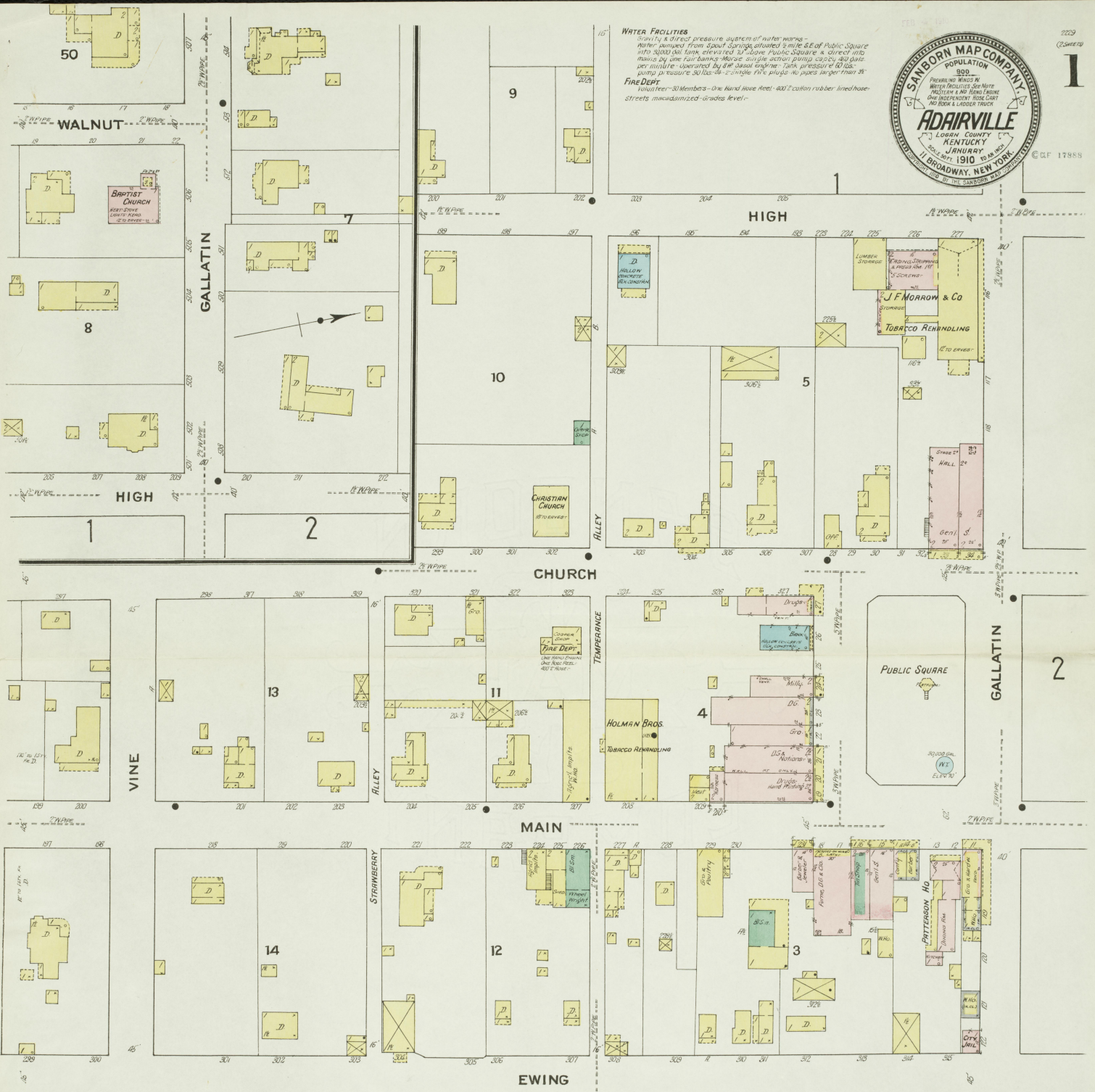




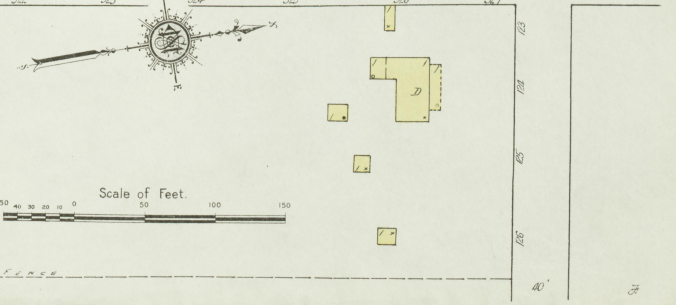
WATER FACILITIES
 Gravity & direct pressure system of water works -
 Water pumped from Spout Springs, elevated 2 miles E. of Public Square
 into 3000 gal. tank elevated 140 feet. Public Square & direct into
 mains by one fair bank Morse single action pump capacity 400 gals.
 per minute - operated by 4 hp. steam engine. Tank pressure 60 lbs.
 pump pressure 50 lbs. - 2 single fire plugs no pipes larger than 3/4"
FIRE DEPT
 Volunteer - 30 Members - One Hand hose reel - 400' cotton rubber lined hose
 Streets macadamized - grades level.



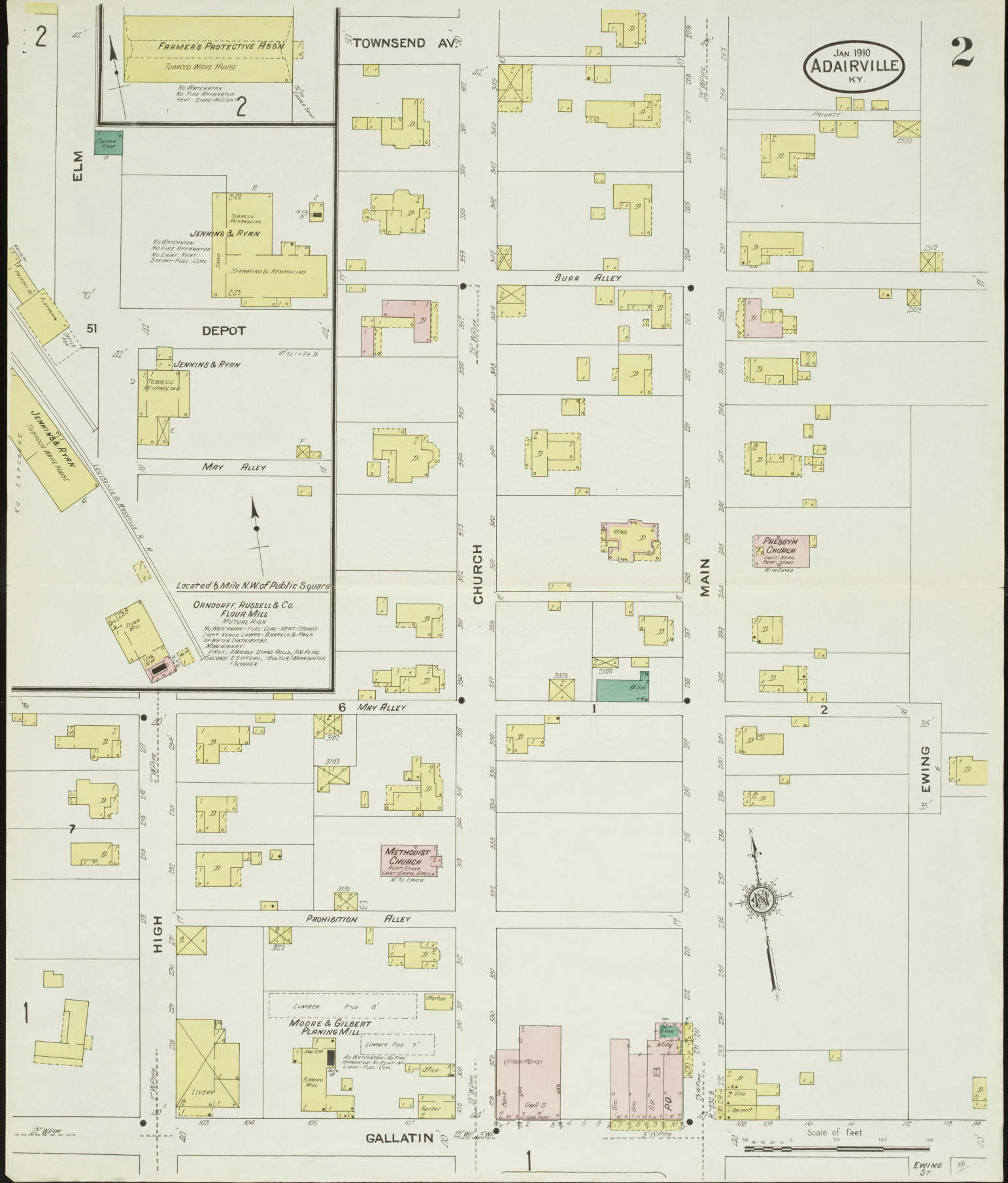
KEY

- STABLE
- RESIDENCES COLORED YELLOW AND FRAME
- RED BRICK
- STONE
- BROWN ADORNS
- GREEN
- INDICATE RELATIVE HEIGHTS
- FIRE STATION, AS SHOWN ON CITY MAP
- ALTERNATE STREET NUMBERS ARE ACTUAL
- CONSECUTIVE STREET NOS ARE ARBITRARY

J.F. MORROW & CO
 REHNDLING 1/2" x 3/4"
 Press 11"
 Back 11"
 31%
 37%
 No WITCHMAN - Bent STERN
 No LAURE - Full SWELL
 No FIRE - BURNHATED



JAN. 1910
ADAIRVILLE
KY.



FARMERS PROTECTIVE HSBN
TOBACCO WARE HOUSE
NO WATCHMAN
NO FIRE APPARATUS
HEAT - STEAM-HEAT

JENKINS & RYAN
TOBACCO REHANDLING
STEERING & REHANDLING
NO WATCHMAN
NO FIRE APPARATUS
NO LIGHT HEAT
STEAM-HEAT - COAL

DEPOT
JENKINS & RYAN
TOBACCO REHANDLING

ORNDORFF, RUSSELL & CO.
FLOUR MILL
MUTUAL RISK
NO WATCHMAN - FUEL CURS - HEAT - STEAM
LIGHT - KEROSENE LAMP - BARRELS & PAILS
OF BATTER DISTRIBUTED
MACHINERY:
FIRST - DOUBLE STAND ROLL, 500 REVL.
SECOND - 5' STRESS, 1000 REVL.
THIRD - SCOURER

METHODIST CHURCH
HEAT - STEAM
LIGHT - KEROSENE
87 TO CENTER

MOORE & GILBERT
PLANING MILL
LUMBER PILE 6'
LUMBER PILE 7'
NO WATCHMAN - NO FIRE
APPARATUS - NO LIGHT - NO
HEAT - STEAM-HEAT - COAL

PRESBYT. CHURCH
LIGHT - KEROSENE
HEAT - STEAM
87 TO CENTER



Scale of Feet.
0 20 40 60 80 100 120 140 160