

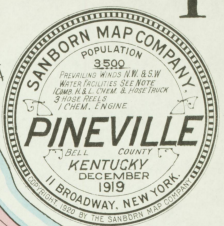
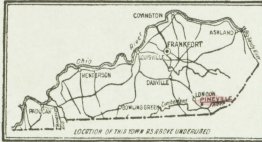
**WATER FACILITIES:**

Gravity & direct pressure system. Supply from deep well. Deep well air lifts discharge into a 120,000 gal. receiving basin from which the water is pumped into the distribution system & a 100,000 gal. reservoir located on hill South of Court house and 24 ft. above business section fire and domestic pressure 25 lb. Two 2000 gal. single acting pumps size 12"x12" capacity 200 gals. per min. Road 2000 lbs. of 2 1/2" c. distribution mains on double hydrant. Plant originally installed in 1890. Added to each year. Daily consumption about 100,000 gallons.

**FIRE DEPT.:**

Volunteers, 3 members. Laid. One fire hook & ladder truck carrying 40 gal. chemical & 300' 2 1/2" hose in good condition. Three hose houses. Each station has one hand reel. Two reels carry 350' 2 1/2" hose respectively and one reel carries 300' 2 1/2" hose. One aerial hand drawn chemical with 100' rubber hose. 25 gal. portable extinguishers distributed throughout the town. 10 open boxes fastened to telephone boxes. Fire alarm bell and whistle.

Streets mostly paved - grades level. Public lights electric.



**KEY**

- 1. FIRE WALL IN BRICK ROOF
- 2. FIRE WALL IN WOOD ROOF
- 3. FIRE WALL IN CONCRETE ROOF
- 4. FIRE WALL IN IRON ROOF
- 5. FIRE WALL IN STEEL ROOF
- 6. FIRE WALL IN TILE ROOF
- 7. FIRE WALL IN SLATE ROOF
- 8. FIRE WALL IN SHINGLE ROOF
- 9. FIRE WALL IN CORRUGATED IRON ROOF
- 10. FIRE WALL IN CORRUGATED STEEL ROOF
- 11. FIRE WALL IN CORRUGATED TILE ROOF
- 12. FIRE WALL IN CORRUGATED SLATE ROOF
- 13. FIRE WALL IN CORRUGATED SHINGLE ROOF
- 14. FIRE WALL IN CORRUGATED CORRUGATED IRON ROOF
- 15. FIRE WALL IN CORRUGATED CORRUGATED STEEL ROOF
- 16. FIRE WALL IN CORRUGATED CORRUGATED TILE ROOF
- 17. FIRE WALL IN CORRUGATED CORRUGATED SLATE ROOF
- 18. FIRE WALL IN CORRUGATED CORRUGATED SHINGLE ROOF
- 19. FIRE WALL IN CORRUGATED CORRUGATED CORRUGATED IRON ROOF
- 20. FIRE WALL IN CORRUGATED CORRUGATED CORRUGATED STEEL ROOF
- 21. FIRE WALL IN CORRUGATED CORRUGATED CORRUGATED TILE ROOF
- 22. FIRE WALL IN CORRUGATED CORRUGATED CORRUGATED SLATE ROOF
- 23. FIRE WALL IN CORRUGATED CORRUGATED CORRUGATED SHINGLE ROOF
- 24. FIRE WALL IN CORRUGATED CORRUGATED CORRUGATED CORRUGATED IRON ROOF
- 25. FIRE WALL IN CORRUGATED CORRUGATED CORRUGATED CORRUGATED STEEL ROOF
- 26. FIRE WALL IN CORRUGATED CORRUGATED CORRUGATED CORRUGATED TILE ROOF
- 27. FIRE WALL IN CORRUGATED CORRUGATED CORRUGATED CORRUGATED SLATE ROOF
- 28. FIRE WALL IN CORRUGATED CORRUGATED CORRUGATED CORRUGATED SHINGLE ROOF
- 29. FIRE WALL IN CORRUGATED CORRUGATED CORRUGATED CORRUGATED CORRUGATED IRON ROOF
- 30. FIRE WALL IN CORRUGATED CORRUGATED CORRUGATED CORRUGATED CORRUGATED STEEL ROOF
- 31. FIRE WALL IN CORRUGATED CORRUGATED CORRUGATED CORRUGATED CORRUGATED TILE ROOF
- 32. FIRE WALL IN CORRUGATED CORRUGATED CORRUGATED CORRUGATED CORRUGATED SLATE ROOF
- 33. FIRE WALL IN CORRUGATED CORRUGATED CORRUGATED CORRUGATED CORRUGATED SHINGLE ROOF
- 34. FIRE WALL IN CORRUGATED CORRUGATED CORRUGATED CORRUGATED CORRUGATED CORRUGATED IRON ROOF
- 35. FIRE WALL IN CORRUGATED CORRUGATED CORRUGATED CORRUGATED CORRUGATED CORRUGATED STEEL ROOF
- 36. FIRE WALL IN CORRUGATED CORRUGATED CORRUGATED CORRUGATED CORRUGATED CORRUGATED TILE ROOF
- 37. FIRE WALL IN CORRUGATED CORRUGATED CORRUGATED CORRUGATED CORRUGATED CORRUGATED SLATE ROOF
- 38. FIRE WALL IN CORRUGATED CORRUGATED CORRUGATED CORRUGATED CORRUGATED CORRUGATED SHINGLE ROOF
- 39. FIRE WALL IN CORRUGATED CORRUGATED CORRUGATED CORRUGATED CORRUGATED CORRUGATED CORRUGATED IRON ROOF
- 40. FIRE WALL IN CORRUGATED CORRUGATED CORRUGATED CORRUGATED CORRUGATED CORRUGATED CORRUGATED STEEL ROOF
- 41. FIRE WALL IN CORRUGATED CORRUGATED CORRUGATED CORRUGATED CORRUGATED CORRUGATED CORRUGATED TILE ROOF
- 42. FIRE WALL IN CORRUGATED CORRUGATED CORRUGATED CORRUGATED CORRUGATED CORRUGATED CORRUGATED SLATE ROOF
- 43. FIRE WALL IN CORRUGATED CORRUGATED CORRUGATED CORRUGATED CORRUGATED CORRUGATED CORRUGATED SHINGLE ROOF
- 44. FIRE WALL IN CORRUGATED CORRUGATED CORRUGATED CORRUGATED CORRUGATED CORRUGATED CORRUGATED CORRUGATED IRON ROOF
- 45. FIRE WALL IN CORRUGATED CORRUGATED CORRUGATED CORRUGATED CORRUGATED CORRUGATED CORRUGATED CORRUGATED STEEL ROOF
- 46. FIRE WALL IN CORRUGATED CORRUGATED CORRUGATED CORRUGATED CORRUGATED CORRUGATED CORRUGATED CORRUGATED TILE ROOF
- 47. FIRE WALL IN CORRUGATED CORRUGATED CORRUGATED CORRUGATED CORRUGATED CORRUGATED CORRUGATED CORRUGATED SLATE ROOF
- 48. FIRE WALL IN CORRUGATED CORRUGATED CORRUGATED CORRUGATED CORRUGATED CORRUGATED CORRUGATED CORRUGATED SHINGLE ROOF
- 49. FIRE WALL IN CORRUGATED CORRUGATED CORRUGATED CORRUGATED CORRUGATED CORRUGATED CORRUGATED CORRUGATED CORRUGATED IRON ROOF
- 50. FIRE WALL IN CORRUGATED CORRUGATED CORRUGATED CORRUGATED CORRUGATED CORRUGATED CORRUGATED CORRUGATED CORRUGATED STEEL ROOF
- 51. FIRE WALL IN CORRUGATED CORRUGATED CORRUGATED CORRUGATED CORRUGATED CORRUGATED CORRUGATED CORRUGATED CORRUGATED TILE ROOF
- 52. FIRE WALL IN CORRUGATED CORRUGATED CORRUGATED CORRUGATED CORRUGATED CORRUGATED CORRUGATED CORRUGATED CORRUGATED SLATE ROOF
- 53. FIRE WALL IN CORRUGATED CORRUGATED CORRUGATED CORRUGATED CORRUGATED CORRUGATED CORRUGATED CORRUGATED CORRUGATED SHINGLE ROOF
- 54. FIRE WALL IN CORRUGATED CORRUGATED CORRUGATED CORRUGATED CORRUGATED CORRUGATED CORRUGATED CORRUGATED CORRUGATED CORRUGATED IRON ROOF
- 55. FIRE WALL IN CORRUGATED CORRUGATED CORRUGATED CORRUGATED CORRUGATED CORRUGATED CORRUGATED CORRUGATED CORRUGATED CORRUGATED STEEL ROOF
- 56. FIRE WALL IN CORRUGATED CORRUGATED CORRUGATED CORRUGATED CORRUGATED CORRUGATED CORRUGATED CORRUGATED CORRUGATED CORRUGATED TILE ROOF
- 57. FIRE WALL IN CORRUGATED CORRUGATED CORRUGATED CORRUGATED CORRUGATED CORRUGATED CORRUGATED CORRUGATED CORRUGATED CORRUGATED SLATE ROOF
- 58. FIRE WALL IN CORRUGATED CORRUGATED CORRUGATED CORRUGATED CORRUGATED CORRUGATED CORRUGATED CORRUGATED CORRUGATED CORRUGATED SHINGLE ROOF
- 59. FIRE WALL IN CORRUGATED CORRUGATED CORRUGATED CORRUGATED CORRUGATED CORRUGATED CORRUGATED CORRUGATED CORRUGATED CORRUGATED CORRUGATED IRON ROOF
- 60. FIRE WALL IN CORRUGATED CORRUGATED CORRUGATED CORRUGATED CORRUGATED CORRUGATED CORRUGATED CORRUGATED CORRUGATED CORRUGATED CORRUGATED STEEL ROOF
- 61. FIRE WALL IN CORRUGATED CORRUGATED CORRUGATED CORRUGATED CORRUGATED CORRUGATED CORRUGATED CORRUGATED CORRUGATED CORRUGATED CORRUGATED TILE ROOF
- 62. FIRE WALL IN CORRUGATED CORRUGATED CORRUGATED CORRUGATED CORRUGATED CORRUGATED CORRUGATED CORRUGATED CORRUGATED CORRUGATED CORRUGATED SLATE ROOF
- 63. FIRE WALL IN CORRUGATED CORRUGATED CORRUGATED CORRUGATED CORRUGATED CORRUGATED CORRUGATED CORRUGATED CORRUGATED CORRUGATED CORRUGATED SHINGLE ROOF
- 64. FIRE WALL IN CORRUGATED CORRUGATED CORRUGATED CORRUGATED CORRUGATED CORRUGATED CORRUGATED CORRUGATED CORRUGATED CORRUGATED CORRUGATED CORRUGATED IRON ROOF
- 65. FIRE WALL IN CORRUGATED CORRUGATED CORRUGATED CORRUGATED CORRUGATED CORRUGATED CORRUGATED CORRUGATED CORRUGATED CORRUGATED CORRUGATED CORRUGATED STEEL ROOF
- 66. FIRE WALL IN CORRUGATED CORRUGATED CORRUGATED CORRUGATED CORRUGATED CORRUGATED CORRUGATED CORRUGATED CORRUGATED CORRUGATED CORRUGATED CORRUGATED TILE ROOF
- 67. FIRE WALL IN CORRUGATED CORRUGATED CORRUGATED CORRUGATED CORRUGATED CORRUGATED CORRUGATED CORRUGATED CORRUGATED CORRUGATED CORRUGATED CORRUGATED SLATE ROOF
- 68. FIRE WALL IN CORRUGATED CORRUGATED CORRUGATED CORRUGATED CORRUGATED CORRUGATED CORRUGATED CORRUGATED CORRUGATED CORRUGATED CORRUGATED CORRUGATED SHINGLE ROOF
- 69. FIRE WALL IN CORRUGATED CORRUGATED CORRUGATED CORRUGATED CORRUGATED CORRUGATED CORRUGATED CORRUGATED CORRUGATED CORRUGATED CORRUGATED CORRUGATED CORRUGATED IRON ROOF
- 70. FIRE WALL IN CORRUGATED CORRUGATED CORRUGATED CORRUGATED CORRUGATED CORRUGATED CORRUGATED CORRUGATED CORRUGATED CORRUGATED CORRUGATED CORRUGATED CORRUGATED STEEL ROOF
- 71. FIRE WALL IN CORRUGATED CORRUGATED CORRUGATED CORRUGATED CORRUGATED CORRUGATED CORRUGATED CORRUGATED CORRUGATED CORRUGATED CORRUGATED CORRUGATED CORRUGATED TILE ROOF
- 72. FIRE WALL IN CORRUGATED CORRUGATED CORRUGATED CORRUGATED CORRUGATED CORRUGATED CORRUGATED CORRUGATED CORRUGATED CORRUGATED CORRUGATED CORRUGATED CORRUGATED SLATE ROOF
- 73. FIRE WALL IN CORRUGATED CORRUGATED CORRUGATED CORRUGATED CORRUGATED CORRUGATED CORRUGATED CORRUGATED CORRUGATED CORRUGATED CORRUGATED CORRUGATED CORRUGATED SHINGLE ROOF
- 74. FIRE WALL IN CORRUGATED CORRUGATED CORRUGATED CORRUGATED CORRUGATED CORRUGATED CORRUGATED CORRUGATED CORRUGATED CORRUGATED CORRUGATED CORRUGATED CORRUGATED CORRUGATED IRON ROOF
- 75. FIRE WALL IN CORRUGATED CORRUGATED CORRUGATED CORRUGATED CORRUGATED CORRUGATED CORRUGATED CORRUGATED CORRUGATED CORRUGATED CORRUGATED CORRUGATED CORRUGATED CORRUGATED STEEL ROOF
- 76. FIRE WALL IN CORRUGATED CORRUGATED CORRUGATED CORRUGATED CORRUGATED CORRUGATED CORRUGATED CORRUGATED CORRUGATED CORRUGATED CORRUGATED CORRUGATED CORRUGATED CORRUGATED TILE ROOF
- 77. FIRE WALL IN CORRUGATED CORRUGATED CORRUGATED CORRUGATED CORRUGATED CORRUGATED CORRUGATED CORRUGATED CORRUGATED CORRUGATED CORRUGATED CORRUGATED CORRUGATED CORRUGATED SLATE ROOF
- 78. FIRE WALL IN CORRUGATED CORRUGATED CORRUGATED CORRUGATED CORRUGATED CORRUGATED CORRUGATED CORRUGATED CORRUGATED CORRUGATED CORRUGATED CORRUGATED CORRUGATED CORRUGATED SHINGLE ROOF
- 79. FIRE WALL IN CORRUGATED CORRUGATED CORRUGATED CORRUGATED CORRUGATED CORRUGATED CORRUGATED CORRUGATED CORRUGATED CORRUGATED CORRUGATED CORRUGATED CORRUGATED CORRUGATED CORRUGATED IRON ROOF
- 80. FIRE WALL IN CORRUGATED CORRUGATED CORRUGATED CORRUGATED CORRUGATED CORRUGATED CORRUGATED CORRUGATED CORRUGATED CORRUGATED CORRUGATED CORRUGATED CORRUGATED CORRUGATED CORRUGATED STEEL ROOF
- 81. FIRE WALL IN CORRUGATED CORRUGATED CORRUGATED CORRUGATED CORRUGATED CORRUGATED CORRUGATED CORRUGATED CORRUGATED CORRUGATED CORRUGATED CORRUGATED CORRUGATED CORRUGATED CORRUGATED TILE ROOF
- 82. FIRE WALL IN CORRUGATED CORRUGATED CORRUGATED CORRUGATED CORRUGATED CORRUGATED CORRUGATED CORRUGATED CORRUGATED CORRUGATED CORRUGATED CORRUGATED CORRUGATED CORRUGATED CORRUGATED SLATE ROOF
- 83. FIRE WALL IN CORRUGATED CORRUGATED CORRUGATED CORRUGATED CORRUGATED CORRUGATED CORRUGATED CORRUGATED CORRUGATED CORRUGATED CORRUGATED CORRUGATED CORRUGATED CORRUGATED CORRUGATED SHINGLE ROOF
- 84. FIRE WALL IN CORRUGATED CORRUGATED CORRUGATED CORRUGATED CORRUGATED CORRUGATED CORRUGATED CORRUGATED CORRUGATED CORRUGATED CORRUGATED CORRUGATED CORRUGATED CORRUGATED CORRUGATED CORRUGATED IRON ROOF
- 85. FIRE WALL IN CORRUGATED CORRUGATED CORRUGATED CORRUGATED CORRUGATED CORRUGATED CORRUGATED CORRUGATED CORRUGATED CORRUGATED CORRUGATED CORRUGATED CORRUGATED CORRUGATED CORRUGATED CORRUGATED STEEL ROOF
- 86. FIRE WALL IN CORRUGATED CORRUGATED CORRUGATED CORRUGATED CORRUGATED CORRUGATED CORRUGATED CORRUGATED CORRUGATED CORRUGATED CORRUGATED CORRUGATED CORRUGATED CORRUGATED CORRUGATED CORRUGATED TILE ROOF
- 87. FIRE WALL IN CORRUGATED CORRUGATED CORRUGATED CORRUGATED CORRUGATED CORRUGATED CORRUGATED CORRUGATED CORRUGATED CORRUGATED CORRUGATED CORRUGATED CORRUGATED CORRUGATED CORRUGATED CORRUGATED SLATE ROOF
- 88. FIRE WALL IN CORRUGATED CORRUGATED CORRUGATED CORRUGATED CORRUGATED CORRUGATED CORRUGATED CORRUGATED CORRUGATED CORRUGATED CORRUGATED CORRUGATED CORRUGATED CORRUGATED CORRUGATED CORRUGATED SHINGLE ROOF
- 89. FIRE WALL IN CORRUGATED CORRUGATED CORRUGATED CORRUGATED CORRUGATED CORRUGATED CORRUGATED CORRUGATED CORRUGATED CORRUGATED CORRUGATED CORRUGATED CORRUGATED CORRUGATED CORRUGATED CORRUGATED CORRUGATED IRON ROOF
- 90. FIRE WALL IN CORRUGATED CORRUGATED CORRUGATED CORRUGATED CORRUGATED CORRUGATED CORRUGATED CORRUGATED CORRUGATED CORRUGATED CORRUGATED CORRUGATED CORRUGATED CORRUGATED CORRUGATED CORRUGATED CORRUGATED STEEL ROOF
- 91. FIRE WALL IN CORRUGATED CORRUGATED CORRUGATED CORRUGATED CORRUGATED CORRUGATED CORRUGATED CORRUGATED CORRUGATED CORRUGATED CORRUGATED CORRUGATED CORRUGATED CORRUGATED CORRUGATED CORRUGATED CORRUGATED TILE ROOF
- 92. FIRE WALL IN CORRUGATED CORRUGATED CORRUGATED CORRUGATED CORRUGATED CORRUGATED CORRUGATED CORRUGATED CORRUGATED CORRUGATED CORRUGATED CORRUGATED CORRUGATED CORRUGATED CORRUGATED CORRUGATED CORRUGATED SLATE ROOF
- 93. FIRE WALL IN CORRUGATED CORRUGATED CORRUGATED CORRUGATED CORRUGATED CORRUGATED CORRUGATED CORRUGATED CORRUGATED CORRUGATED CORRUGATED CORRUGATED CORRUGATED CORRUGATED CORRUGATED CORRUGATED CORRUGATED SHINGLE ROOF
- 94. FIRE WALL IN CORRUGATED CORRUGATED CORRUGATED CORRUGATED CORRUGATED CORRUGATED CORRUGATED CORRUGATED CORRUGATED CORRUGATED CORRUGATED CORRUGATED CORRUGATED CORRUGATED CORRUGATED CORRUGATED CORRUGATED CORRUGATED IRON ROOF
- 95. FIRE WALL IN CORRUGATED CORRUGATED CORRUGATED CORRUGATED CORRUGATED CORRUGATED CORRUGATED CORRUGATED CORRUGATED CORRUGATED CORRUGATED CORRUGATED CORRUGATED CORRUGATED CORRUGATED CORRUGATED CORRUGATED CORRUGATED STEEL ROOF
- 96. FIRE WALL IN CORRUGATED CORRUGATED CORRUGATED CORRUGATED CORRUGATED CORRUGATED CORRUGATED CORRUGATED CORRUGATED CORRUGATED CORRUGATED CORRUGATED CORRUGATED CORRUGATED CORRUGATED CORRUGATED CORRUGATED CORRUGATED TILE ROOF
- 97. FIRE WALL IN CORRUGATED CORRUGATED CORRUGATED CORRUGATED CORRUGATED CORRUGATED CORRUGATED CORRUGATED CORRUGATED CORRUGATED CORRUGATED CORRUGATED CORRUGATED CORRUGATED CORRUGATED CORRUGATED CORRUGATED CORRUGATED SLATE ROOF
- 98. FIRE WALL IN CORRUGATED CORRUGATED CORRUGATED CORRUGATED CORRUGATED CORRUGATED CORRUGATED CORRUGATED CORRUGATED CORRUGATED CORRUGATED CORRUGATED CORRUGATED CORRUGATED CORRUGATED CORRUGATED CORRUGATED CORRUGATED SHINGLE ROOF
- 99. FIRE WALL IN CORRUGATED CORRUGATED CORRUGATED CORRUGATED CORRUGATED CORRUGATED CORRUGATED CORRUGATED CORRUGATED CORRUGATED CORRUGATED CORRUGATED CORRUGATED CORRUGATED CORRUGATED CORRUGATED CORRUGATED CORRUGATED CORRUGATED IRON ROOF
- 100. FIRE WALL IN CORRUGATED CORRUGATED CORRUGATED CORRUGATED CORRUGATED CORRUGATED CORRUGATED CORRUGATED CORRUGATED CORRUGATED CORRUGATED CORRUGATED CORRUGATED CORRUGATED CORRUGATED CORRUGATED CORRUGATED CORRUGATED CORRUGATED STEEL ROOF

**INDEX**

STREETS	ARBITRARY	ACTUAL
Alabama Ave.	101-148	401-446
Apache Place (arbitrary), at Arjay.	15-22	
Apple Blossom, at Kettle Island.	101-122	301-322
Branch Place (arbitrary), at Arjay.	101-122	301-322
Byron Place (arbitrary), at Arjay.	101-122	301-322
Catalpa.	3-4	
Clear.	15-24	
Cherry.	101-122	301-322
Cumberland Ave.	201-250	401-450
Cypress Ave.	101-122	301-322
Fifth.	3-4	
First.	3-4	
Fourth.	3-4	
Holly.	3-4	
Iroquois Place (arbitrary), at Arjay.	101-122	301-322
Kentucky Ave.	101-143	401-443
Laurel.	3-4	
Maple.	3-4	
Mountain View Ave.	4-6	
Oak.	3-4	
Park Ave.	15-18	
Pine.	301-319	401-418
Primrose, at Kettle Island.	101-122	301-322
Prospect Ave.	101-122	301-322
River (arbitrary).	3-4	
Second.	3-4	
Sunee Place (arbitrary), at Arjay.	101-122	301-322
Sixth Place (arbitrary), at Arjay.	101-122	301-322
Sixth.	3-4	
Spruce.	3-4	
Sycamore.	3-4	
Tennessee Ave.	15-22	
Third.	3-4	
Uto Place (arbitrary), at Arjay.	101-122	301-322
Virginia Ave.	15-21	

**SPECIALLY LISTED**

A. M. E. Church, Allen Chapel.	7
Arctia Coal Co.	8
Arjay Mine.	6
Baptist Church (negro).	4
Ball Hotel.	2
Christian Church.	3
City Water Works, Pumping Station.	1
Coleman Mining Co., Fox Ridge Mines.	8
Commercial Hotel.	2
Confidential Hotel.	2
County Court House.	6
County School.	6
Federal Coal Co.	8
Fire Department Station 106 Cedar St.	4
L. & N. E. Depot.	3
First M. E. Church.	8
Fox Ridge Mines.	8
Glendon Mine.	8
Kentucky Utilities Co., Ice Plant.	1
Liberty Coal and Coke Co.	7
Lyric Theatre.	6
Mt. Taber Presbyterian Church.	1
Pineville Baptist Church.	3
Public School.	3
Steam Laundry.	1
Post Office.	2
Public School, at Arjay.	3
Public School, at Fox Ridge Mines.	8
Public School, at Kettle Island.	7
Public School, at Straight Creek.	4
Public School, at Arjay (negro).	5
Riverview Hotel.	2
Thomas Catholic Church.	3
Southern M. E. Church.	2
Union Church.	2
Wilson's Hospital.	2

NOTE.—House Numbers give an arbitrary.

Scale of Feet. 0 50 100 150  
Copyright 1920 by the Sanborn Map Co.

Cumberland River

CHERRY AV.

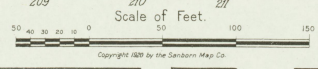
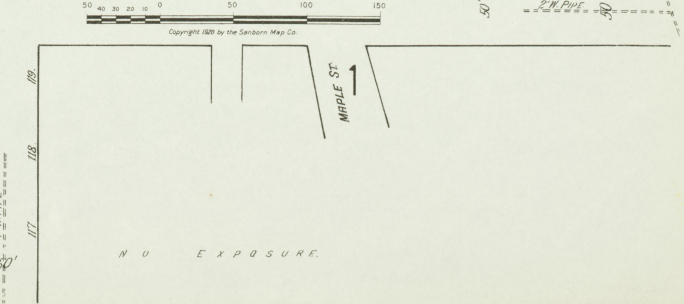
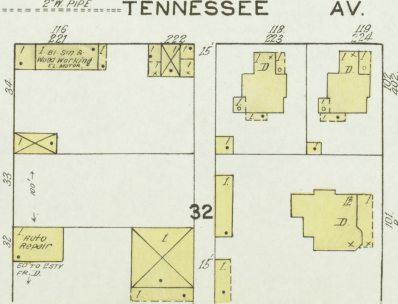
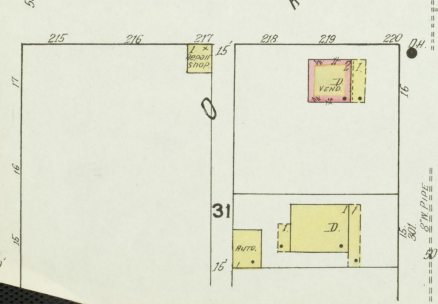
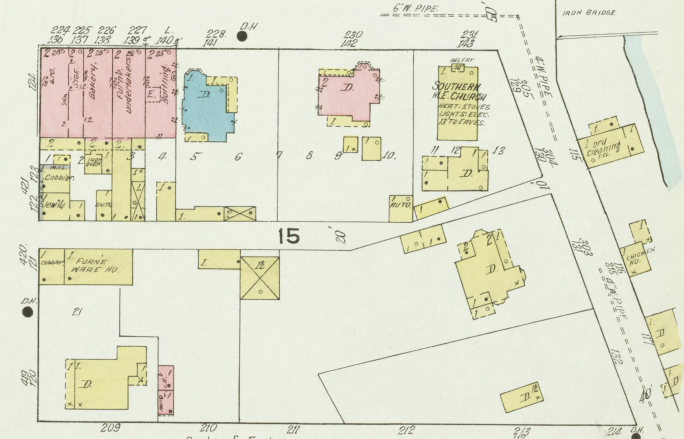
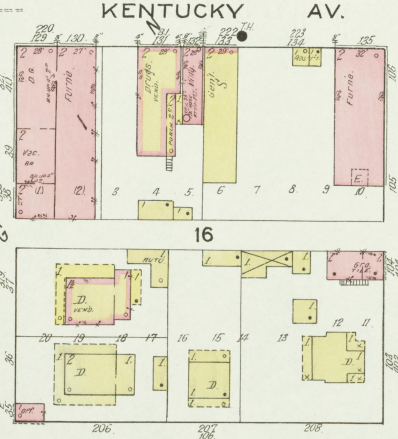
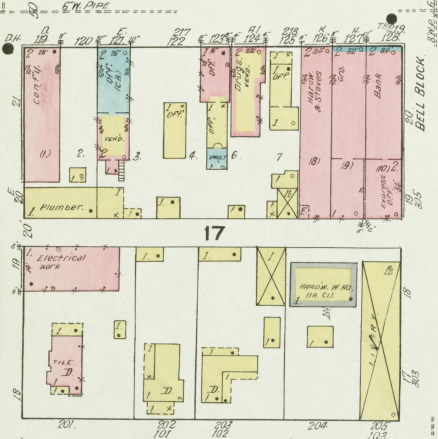
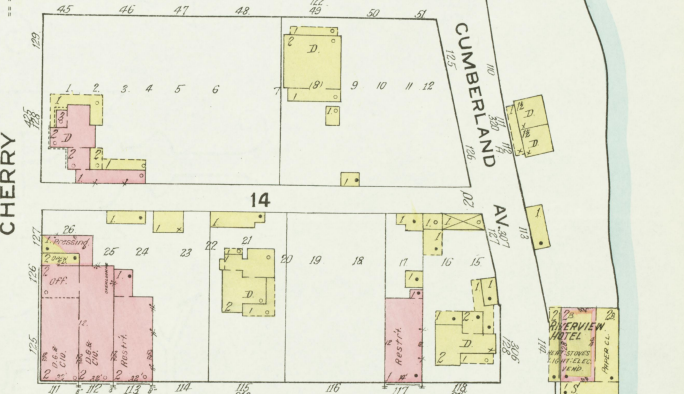
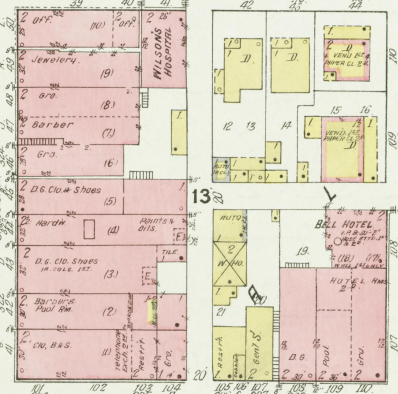
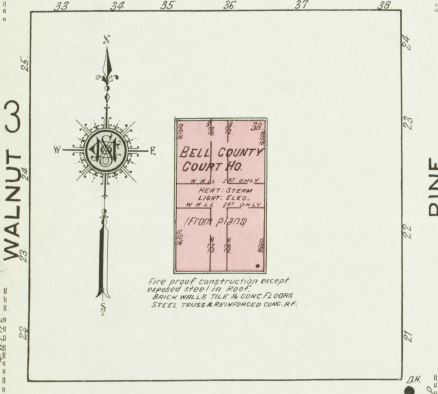
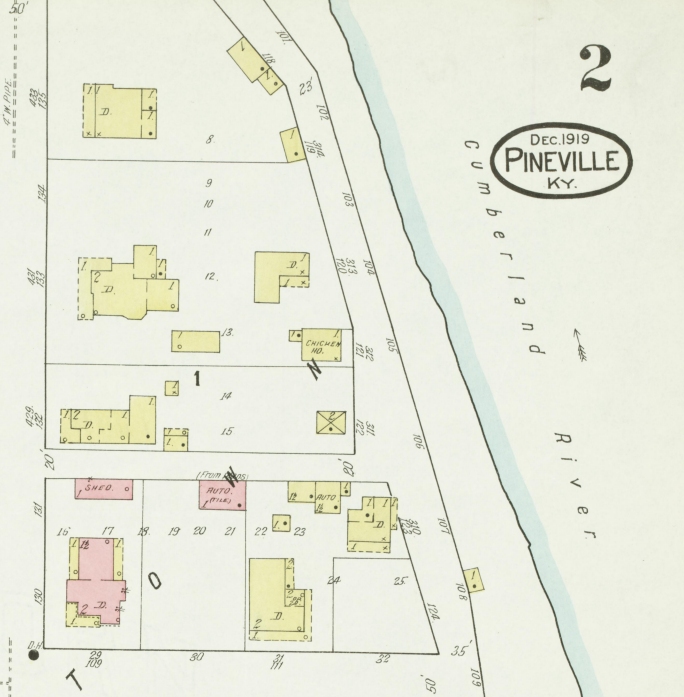
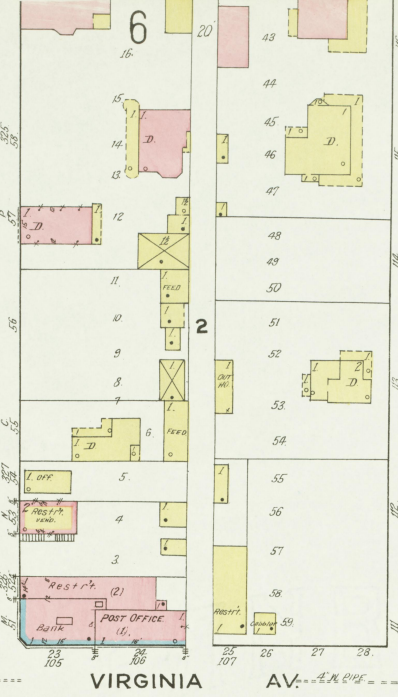
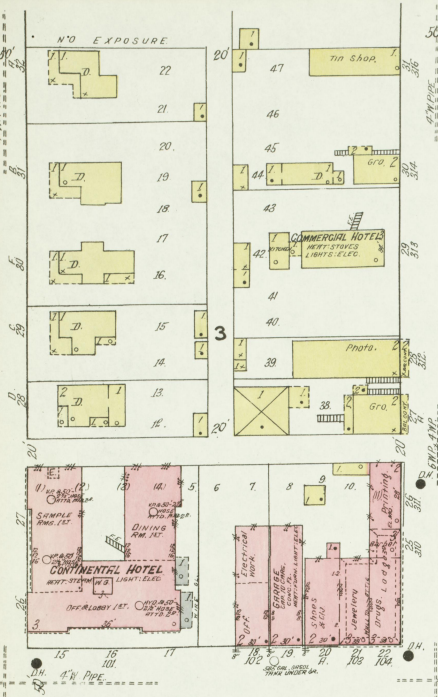
KENTUCKY AV.

TENNESSEE AV.

VIRGINIA AV.

KENTUCKY AV.

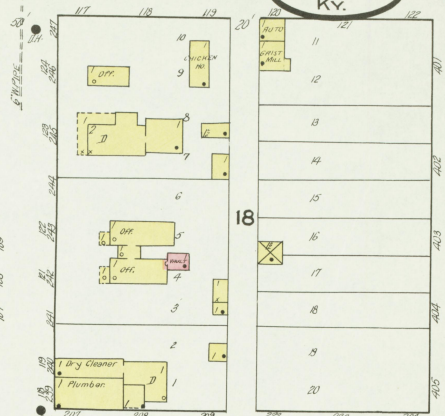
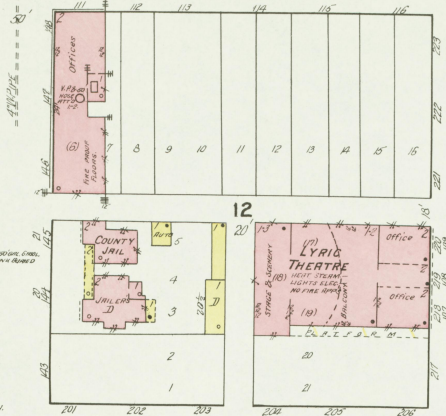
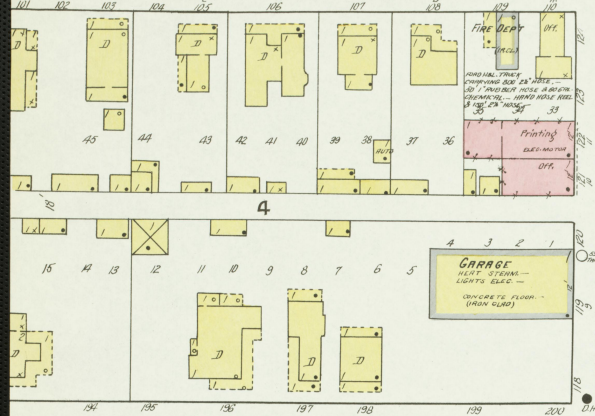
TENNESSEE AV.



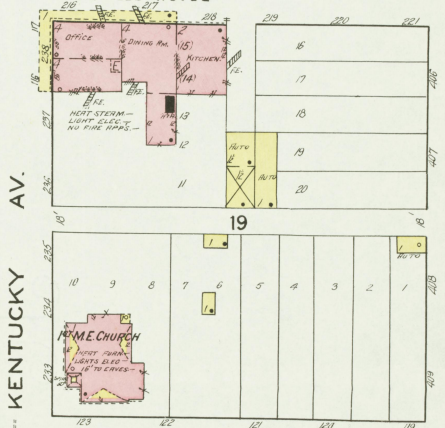
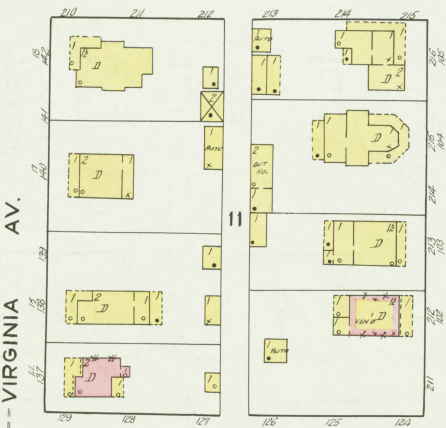
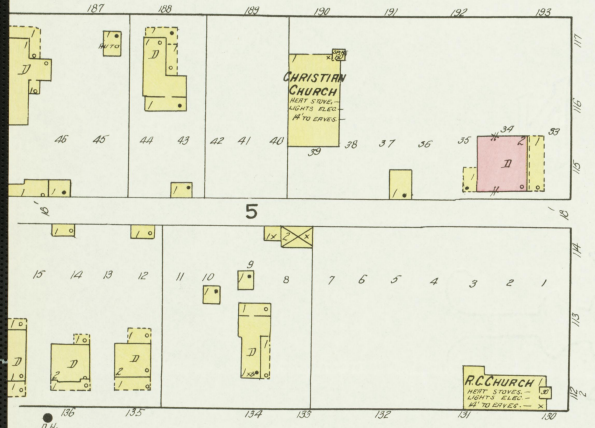
Copyright 1920 by the Sanborn Map Co.

N U E X P O S U R E .

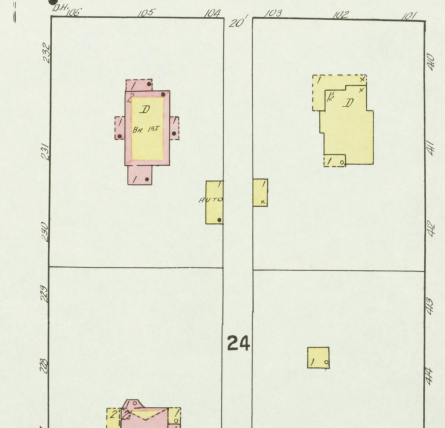
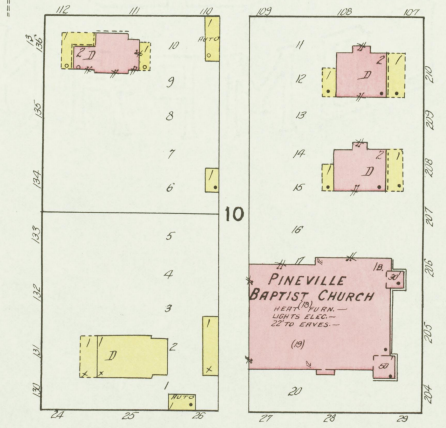
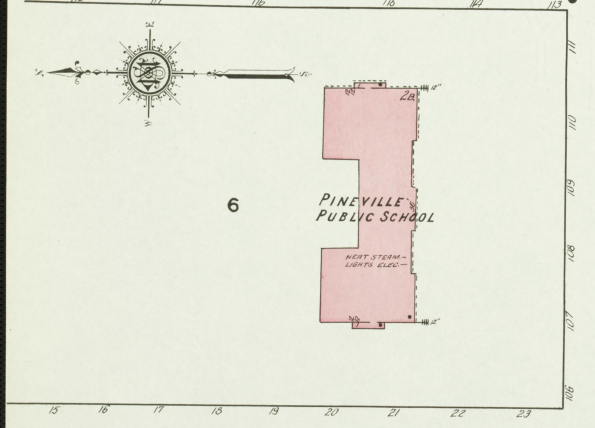
WALNUT 2



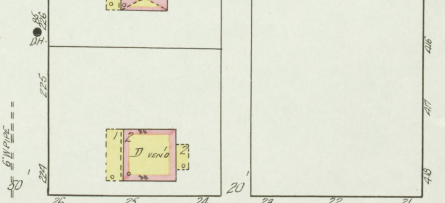
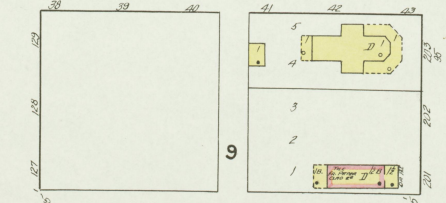
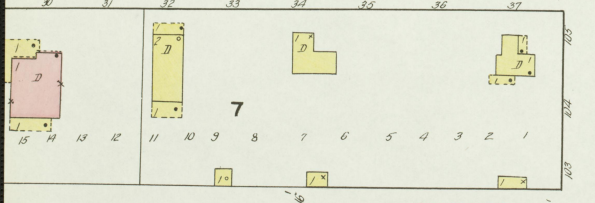
OAK



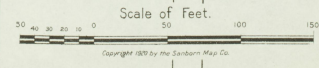
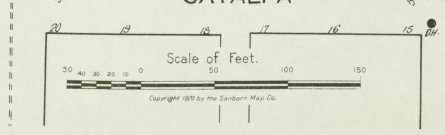
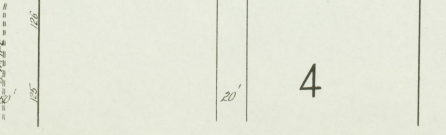
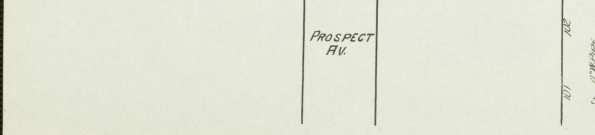
LAUREL

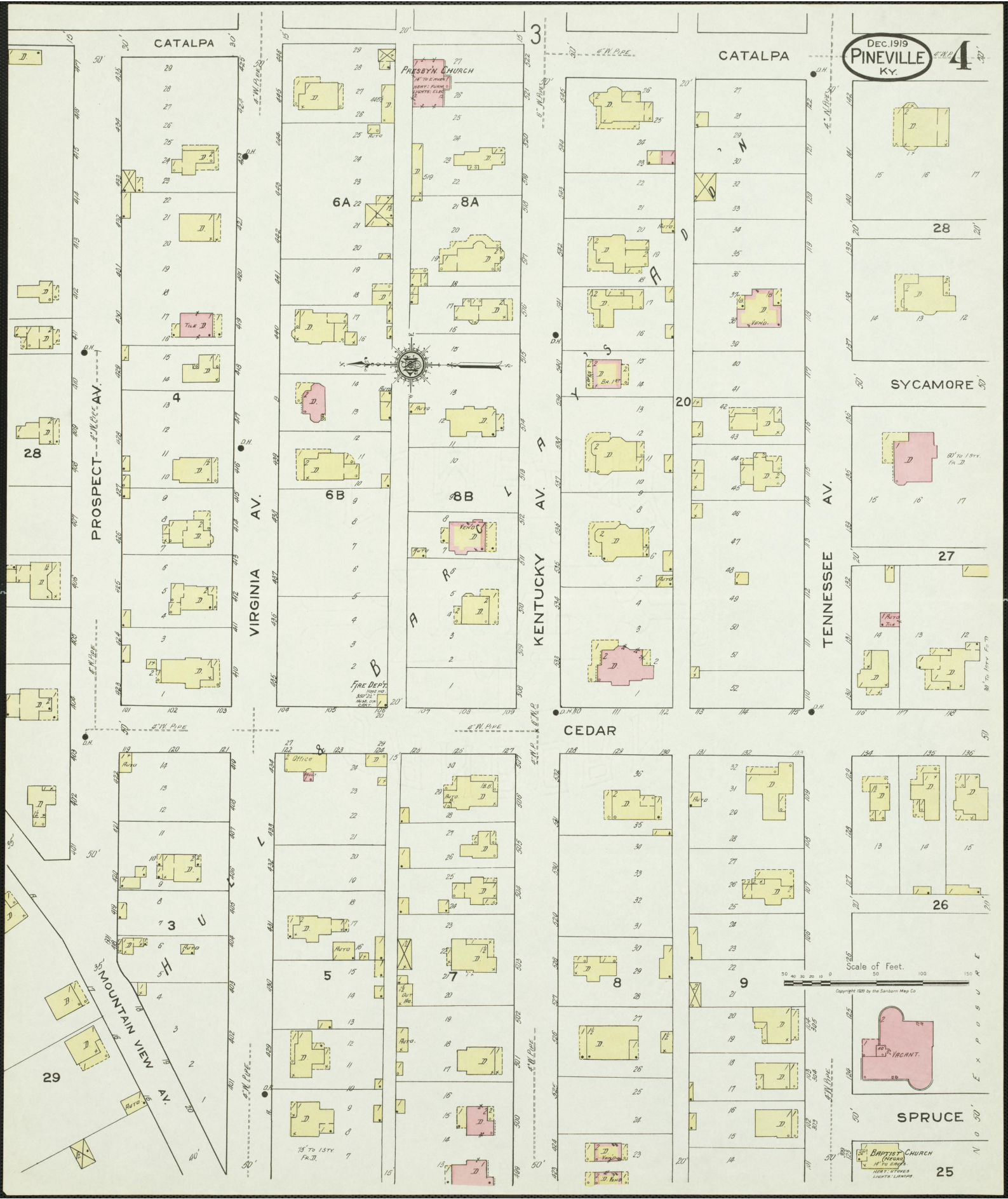


HOLLY



CATALPA





**PRESBYTERIAN CHURCH**  
1st to corner  
WENT. PARSONS  
SOUTH. CLACK

**BAPTIST CHURCH**  
1st to 2nd  
WENT. PARSONS  
SOUTH. CLACK

Scale of Feet.  
0 50 100 150

Copyright 1919 by the Sanborn Map Co

**SPRUCE**

**VACANT**

**26**

**27**

**28**

**29**

**30**

**31**

**32**

**33**

**CEDAR**

**20**

**21**

**22**

**23**

**24**

**VIRGINIA AV.**

**KENTUCKY AV.**

**TENNESSEE AV.**

**PROSPECT AV.**

**CATALPA**

**CATALPA**

**MOUNTAIN VIEW AV.**

**SPRUCE**

**25**

**26**

**27**

**28**

**29**

**30**

**31**

**6A**

**8A**

**6B**

**8B**

**5**

**7**

**3**

**8**

**4**

**1**

**29**

**28**

**27**

**26**

**25**

**24**

**23**

**22**

**21**

**20**

**19**

**18**

**17**

**16**

**15**

**14**

**13**

**12**

**11**

**10**

**9**

**8**

**7**

**6**

**5**

**4**

**3**

**2**

**1**

**20**

**19**

**18**

**17**

**16**

**15**

**14**

**13**

**12**

**11**

**10**

**9**

**8**

**7**

**6**

**5**

**4**

**3**

**2**

**1**

**20**

**19**

**18**

**17**

**16**

**15**

**14**

**13**

**12**

**11**

**10**

**9**

**8**

**7**

**6**

**5**

**4**

**3**

**2**

**1**

**20**

**19**

**18**

**17**

**16**

**15**

**14**

**13**

**12**

**11**

**10**

**9**

**8**

**7**

**6**

**5**

**4**

**3**

**2**

**1**

**20**

**19**

**18**

**17**

**16**

**15**

**14**

**13**

**12**

**11**

**10**

**9**

**8**

**7**

**6**

**5**

**4**

**3**

**2**

**1**

**20**

**19**

**18**

**17**

**16**

**15**

**14**

**13**

**12**

**11**

**10**

**9**

**8**

**7**

**6**

**5**

**4**

**3**

**2**

**1**

**20**

**19**

**18**

**17**

**16**

**15**

**14**

**13**

**12**

**11**

**10**

**9**

**8**

**7**

**6**

**5**

**4**

**3**

**2**

**1**

**20**

**19**

**18**

**17**

**16**

**15**

**14**

**13**

**12**

**11**

**10**

**9**

**8**

**7**

**6**

**5**

**4**

**3**

**2**

**1**

**20**

**19**

**18**

**17**

**16**

**15**

**14**

**13**

**12**

**11**

**10**

**9**

**8**

**7**

**6**

**5**

**4**

**3**

**2**

**1**

**20**

**19**

**18**

**17**

**16**

**15**

**14**

**13**

**12**

**11**

**10**

**9**

**8**

**7**

**6**

**5**

**4**

**3**

**2**

**1**

**20**

**19**

**18**

**17**

**16**

**15**

**14**

**13**

**12**

**11**

**10**

**9**

**8**

**7**

**6**

**5**

**4**

**3**

**2**

**1**

**20**

**19**

**18**

**17**

**16**

**15**

**14**

**13**

**12**

**11**

**10**

**9**

**8**

**7**

**6**

**5**

**4**

**3**

**2**

**1**

**20**

**19**

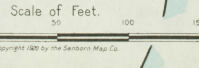
**18**

**17**

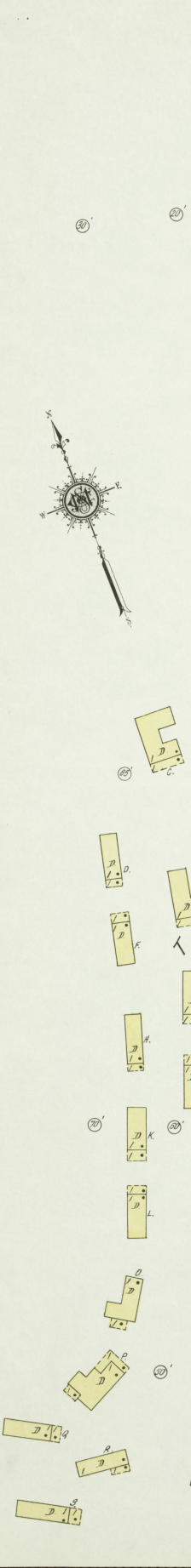
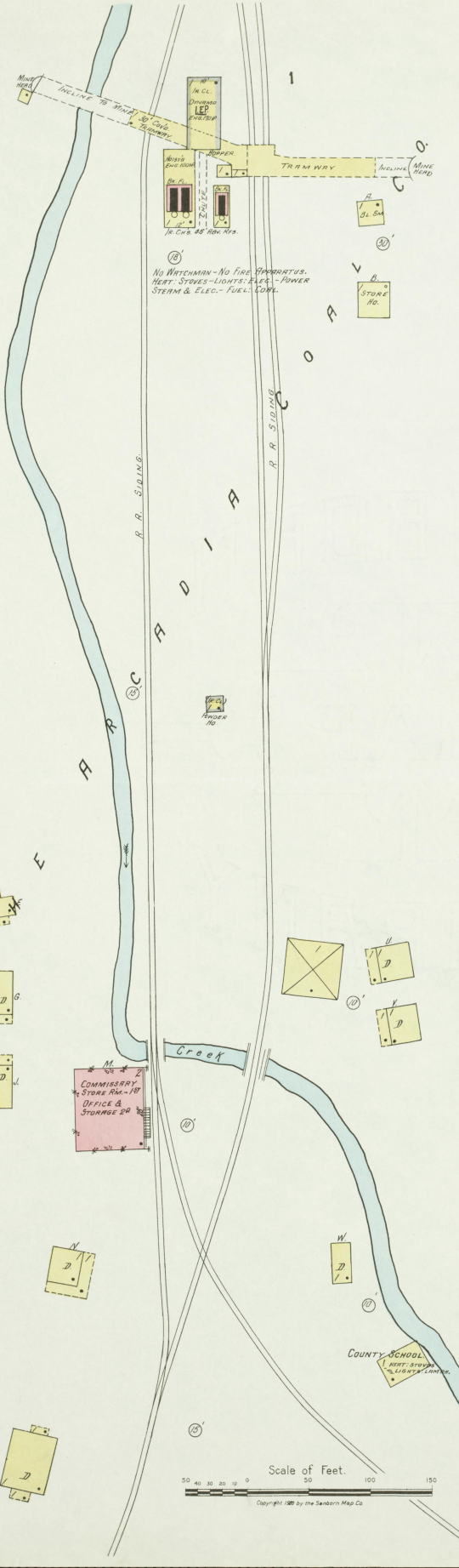
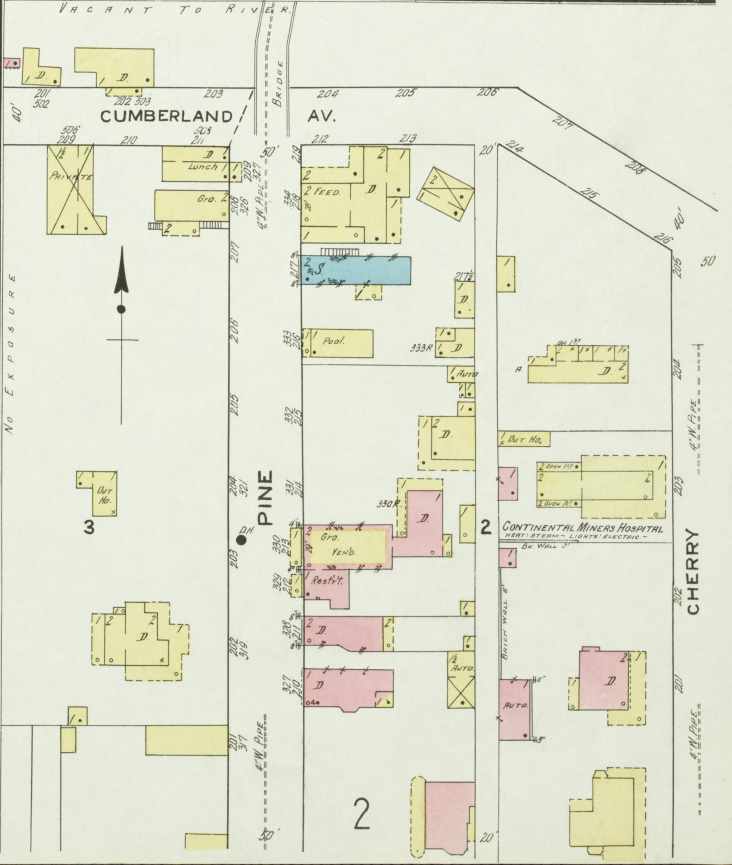
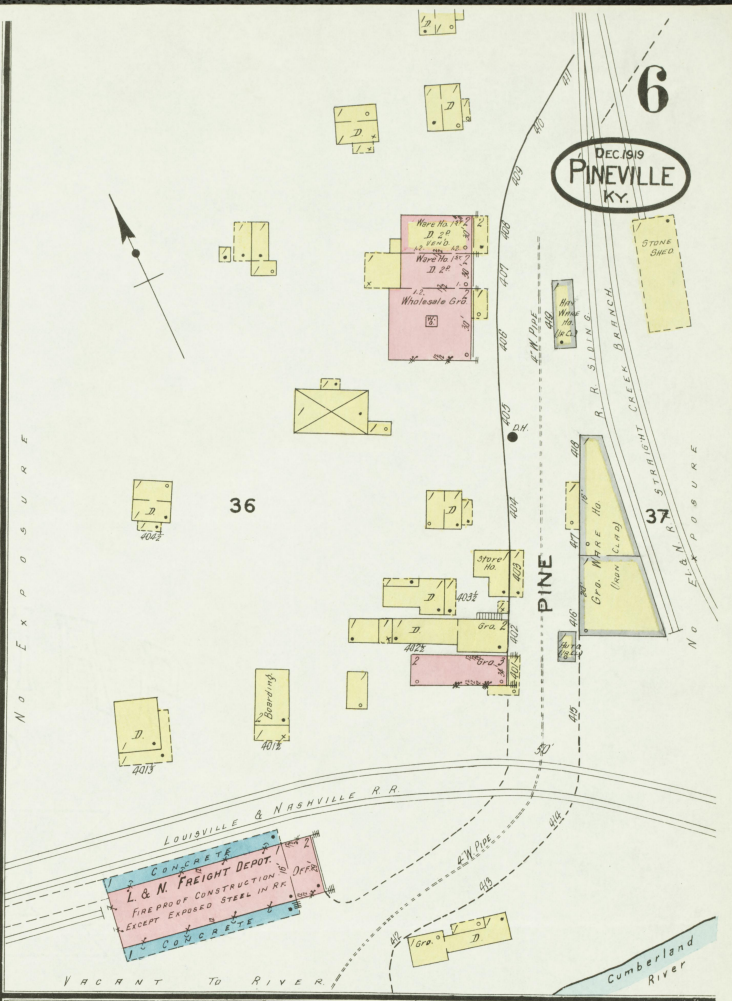
**16**

**15**

Dec 1919  
PINEVILLE  
KY.

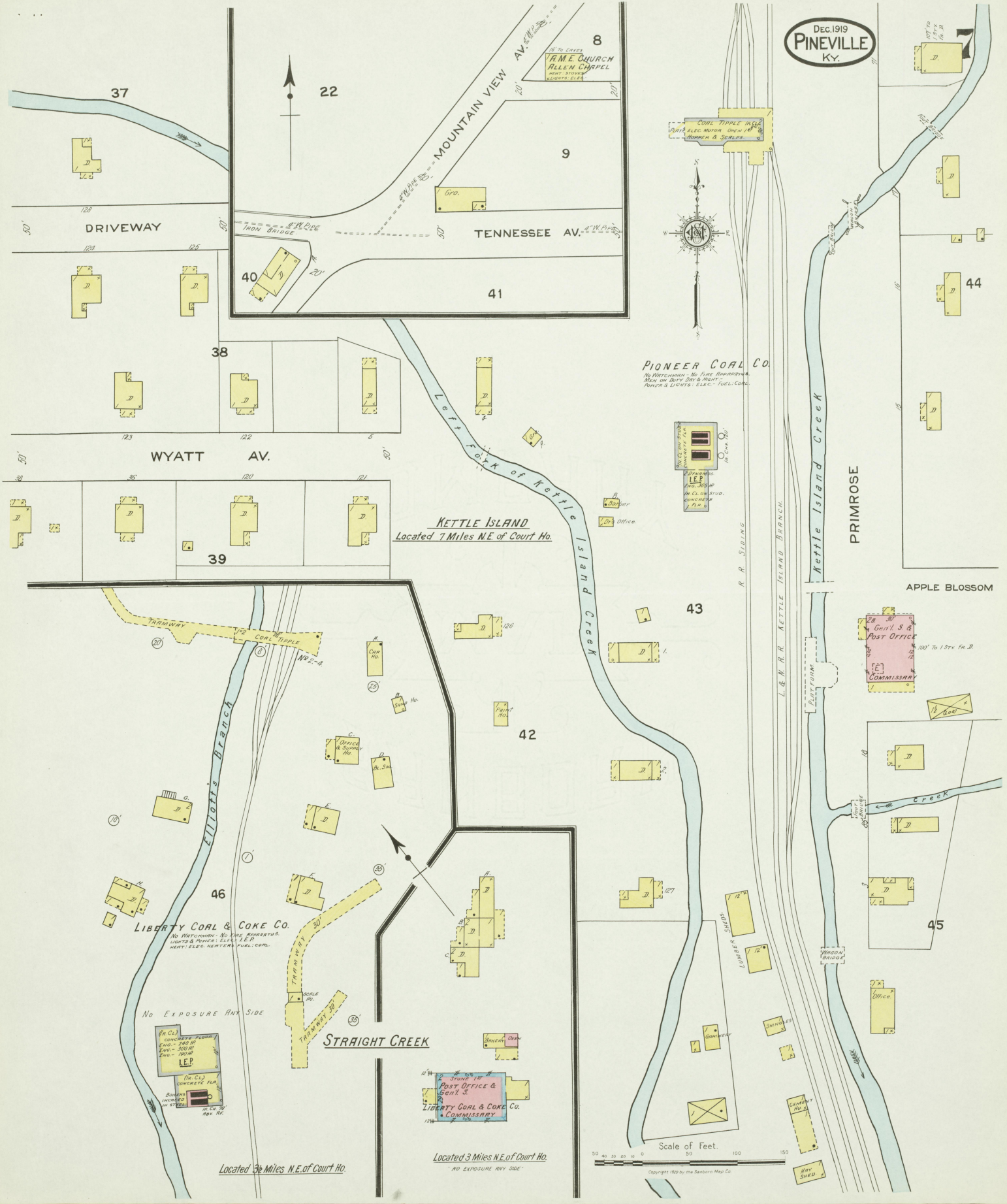


Copyright 1920 by the Seaborn Map Co.



Scale of Feet.  
0 50 100 150  
Copyright 1920 by the Sanborn Map Co.

Dec. 1919  
**PINEVILLE**  
KY.



TO COAL  
**VAME CHURCH**  
**ALLEN CHAPEL**  
RENT STORES  
RENTS \$1.00

COAL TIPPLE BLDG  
PART ELEC MOTOR CHEN AT  
MOPPER & SEALS

**PIONEER COAL CO.**  
NO WATCHMAN - NO FIRE PROTECTION  
MEN ON DUTY DAY & NIGHT  
POWER & LIGHTS - ELEC - FUEL - COAL

**KETTLE ISLAND**  
Located 7 Miles NE of Court Ho.

**LIBERTY COAL & COKE CO.**  
NO WATCHMAN - NO FIRE PROTECTION  
LIGHTS & POWER - ELEC - L.E.P.  
MANY ELEC. MACHINERY - FUEL - COAL

Post Office & Gen'l S.  
**LIBERTY COAL & COKE CO.**  
& COMMISSARY

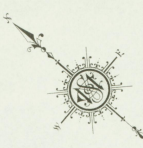
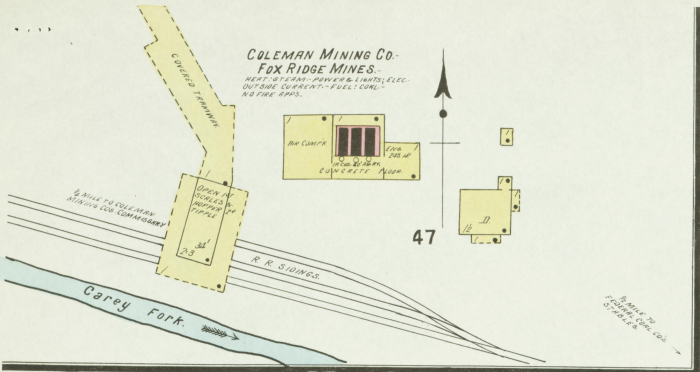
Located 3 1/2 Miles N.E. of Court Ho.

Located 3 Miles N.E. of Court Ho.  
NO EXPOSURE ANY SIDE

Scale of Feet.  
0 50 100 150

Copyright 1920 by the Seaboard Map Co.

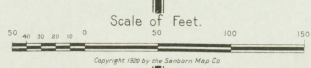
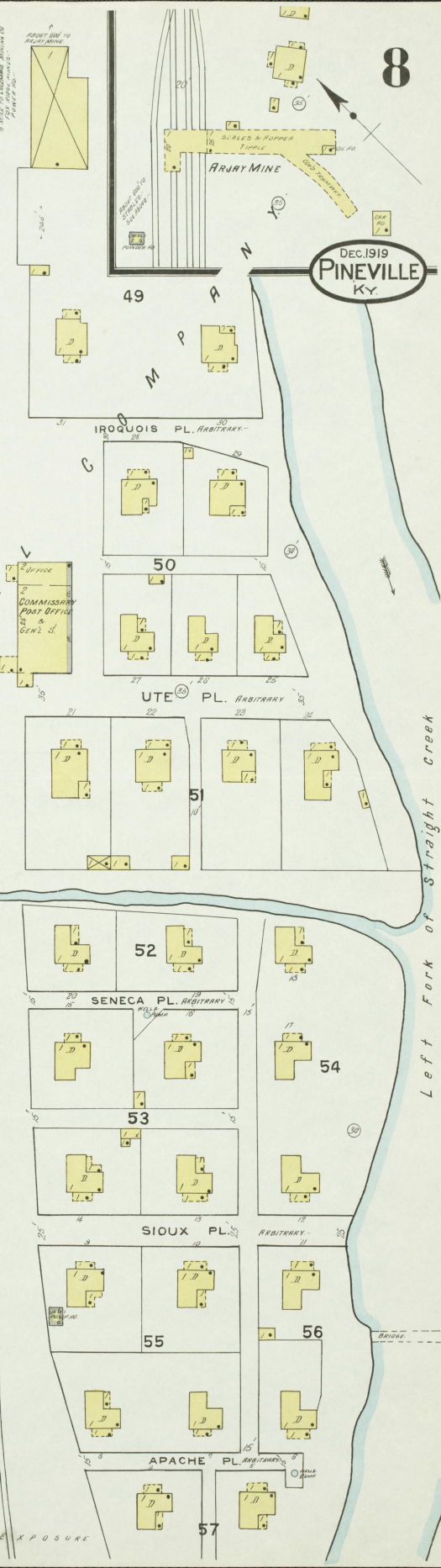
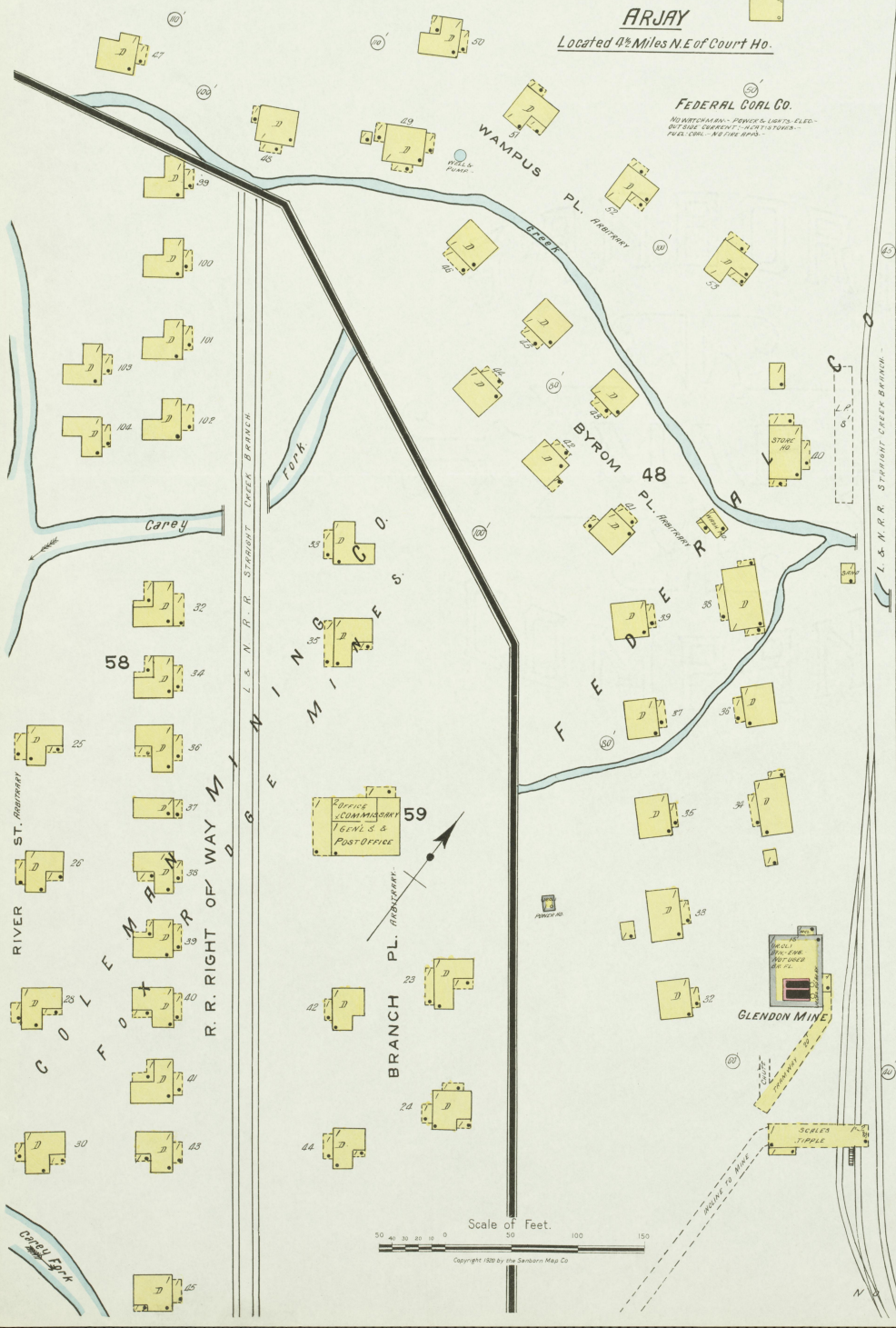
COLEMAN MINING CO.  
FOX RIDGE MINES.  
BEST OF FEAT. POWER & LIGHTS. ELEC.  
OUTSIDE CONCENTRATOR. FUEL COKE.  
NO FIRE BRD.



PUBLIC SCHOOL  
ADULTS AND LEGALS

ARJAY  
Located 4 1/2 Miles N.E. of Court Ho.

FEDERAL COAL CO.  
NO INTERMEDIATION. POWER & LIGHTS. ELEC.  
OUTSIDE CONCENTRATOR. FUEL COKE. NO FIRE BRD.



RIVER ST. ARBITRARY  
L. & N. R. R. STRAIGHT CREEK BRANCH  
L. & N. R. R. STRAIGHT CREEK BRANCH  
L. & N. R. R. STRAIGHT CREEK BRANCH  
L. & N. R. R. STRAIGHT CREEK BRANCH

L. & N. R. R. STRAIGHT CREEK BRANCH

Left Fork of Straight Creek

N. EXPOSURE