





SEE SHEET NO. 4.

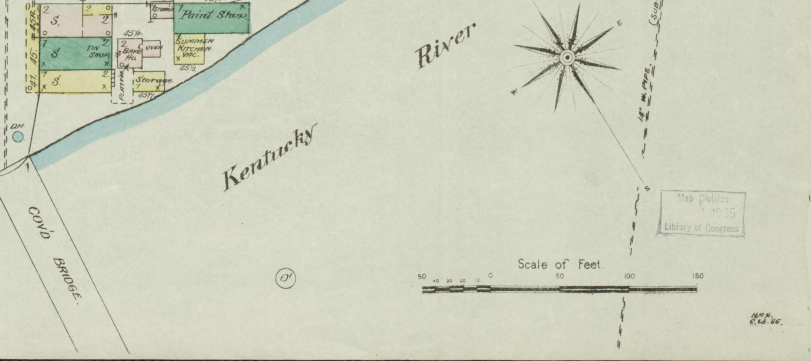
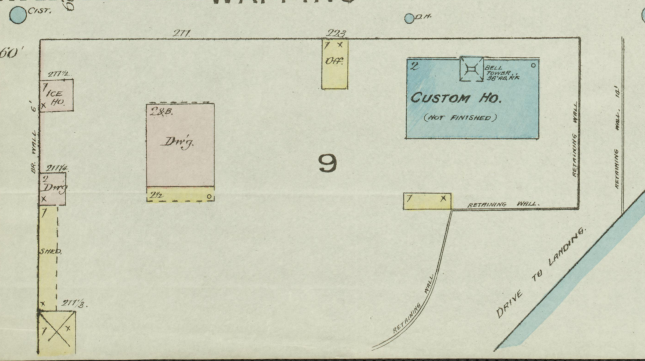
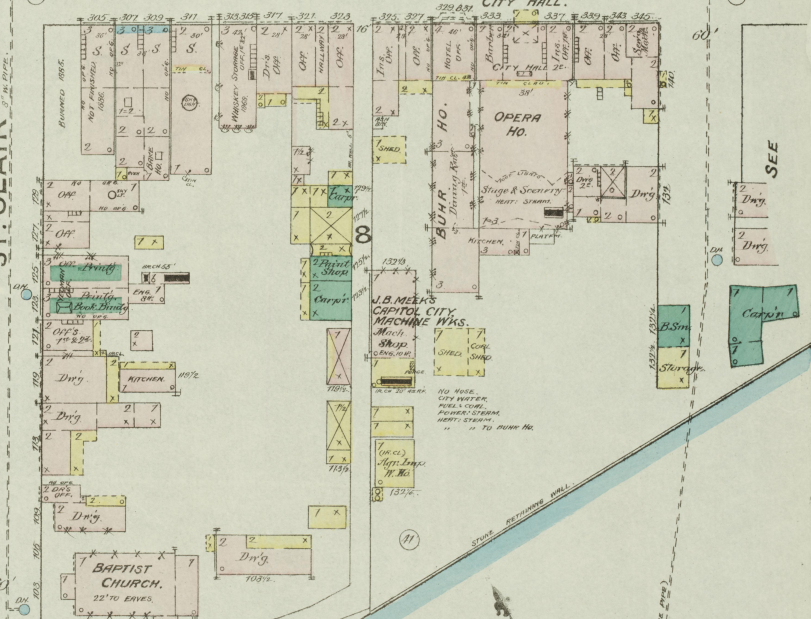
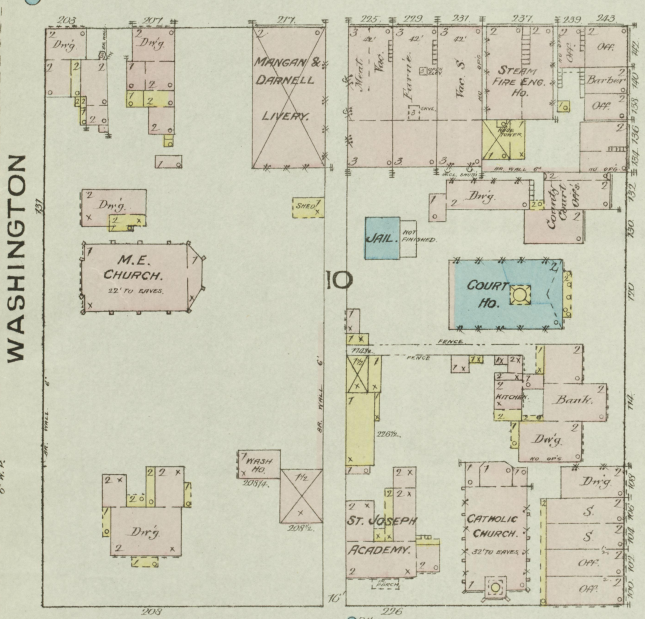
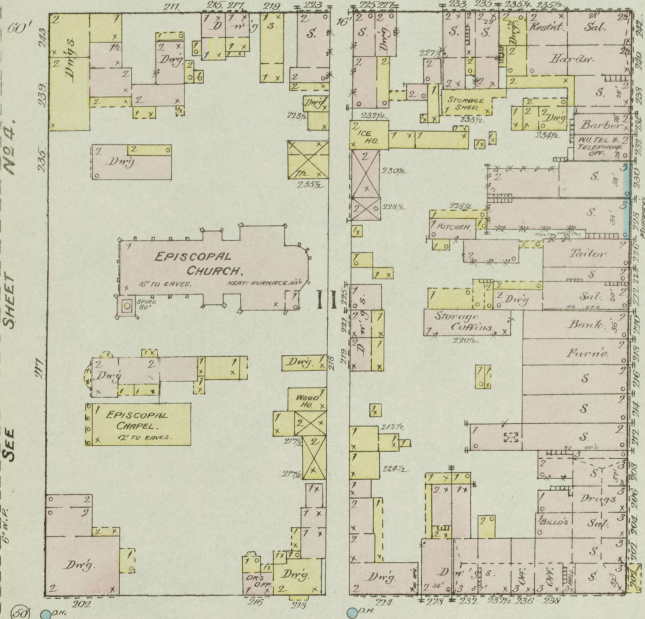
SEE SHEET

NO. 5.

3

JUNE 1886  
FRANKFORT  
KY.

BROADWAY



WASHINGTON

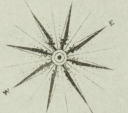
ST. CLAIR

WAPPING

MAIN

Kentucky

River



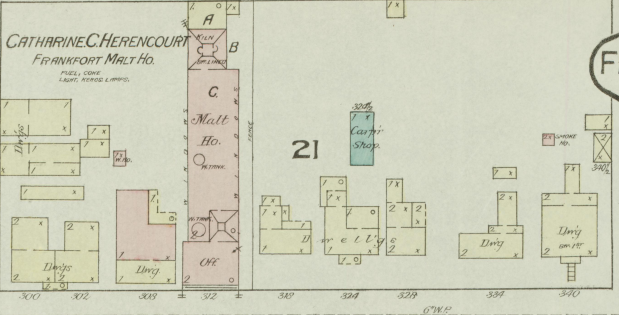
Scale of Feet

Map Division  
Library of Congress



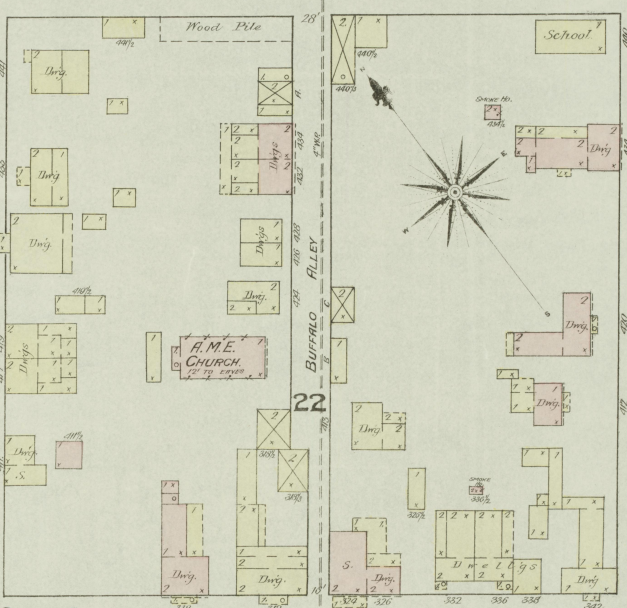
JUNE 1886  
**FRANKFORT**  
KY.

**BLANTON**



No. 6

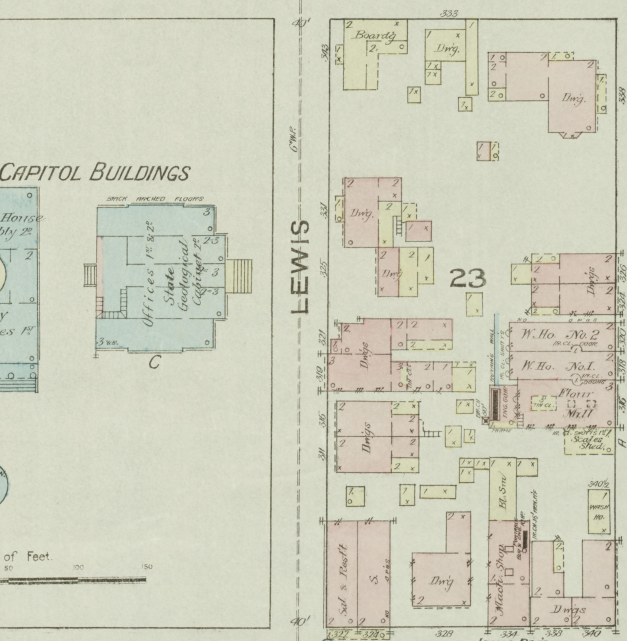
**MERO**



SHEET

SEE

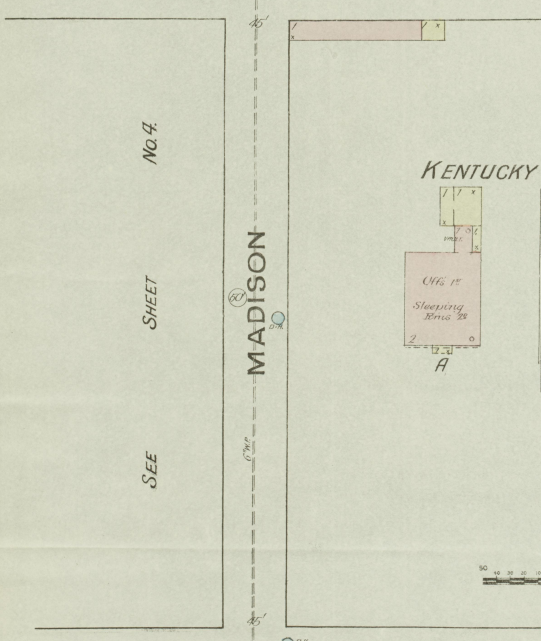
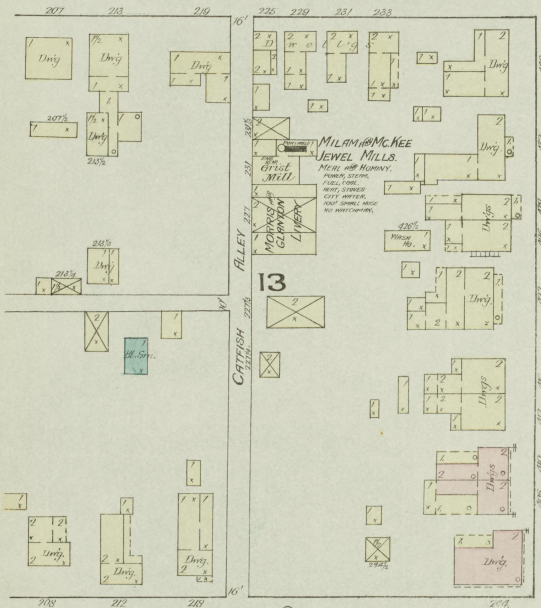
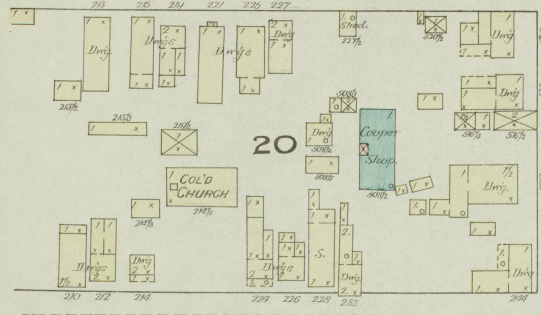
**CLINTON**



No. 2

SHEET

SEE



No. 4

SHEET

SEE

SEE

OWNER OF L. & N. R. R.

No. 3

**MILES' SON CITY MILLS**  
 1. Power & Mill  
 2. Sawmill  
 3. Flour  
 4. Grist  
 5. Lumber  
 6. Coal  
 7. Iron  
 8. Steel  
 9. Glass  
 10. Paper  
 11. Brick  
 12. Pottery  
 13. Textile  
 14. Chemical  
 15. Pharmaceutical  
 16. Agricultural  
 17. Manufacturing  
 18. Commercial  
 19. Residential  
 20. Public  
 21. Religious  
 22. Educational  
 23. Cultural  
 24. Recreational  
 25. Entertainment  
 26. Transportation  
 27. Communication  
 28. Information  
 29. Health  
 30. Social  
 31. Community  
 32. Government  
 33. Military  
 34. Law  
 35. Medicine  
 36. Education  
 37. Science  
 38. Technology  
 39. Art  
 40. Music  
 41. Sports  
 42. Entertainment  
 43. Media  
 44. Advertising  
 45. Marketing  
 46. Sales  
 47. Distribution  
 48. Logistics  
 49. Shipping  
 50. Import/Export

SEE

BLANTON

No. 5

SEE SHEET

NO. 2

CLINTON

SHEET

ANN

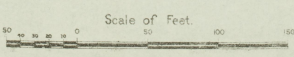
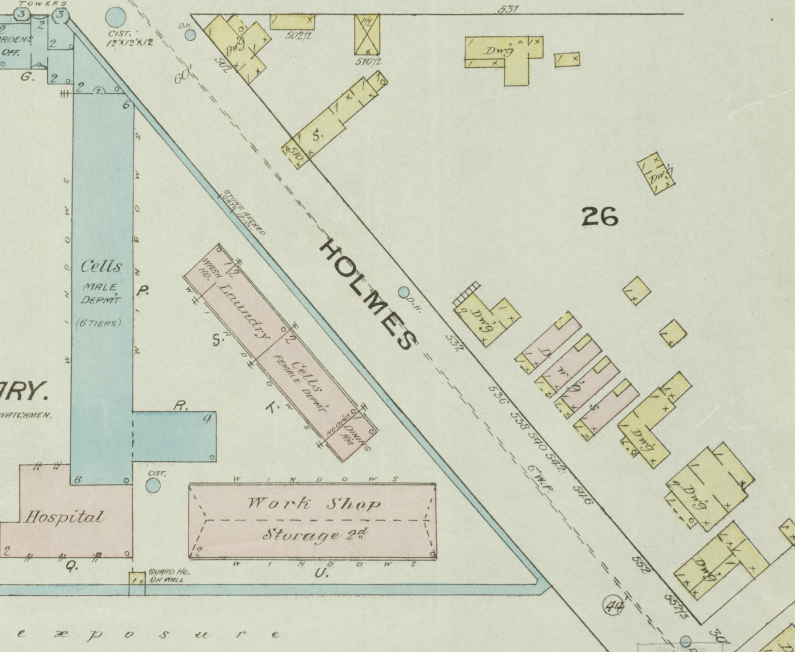
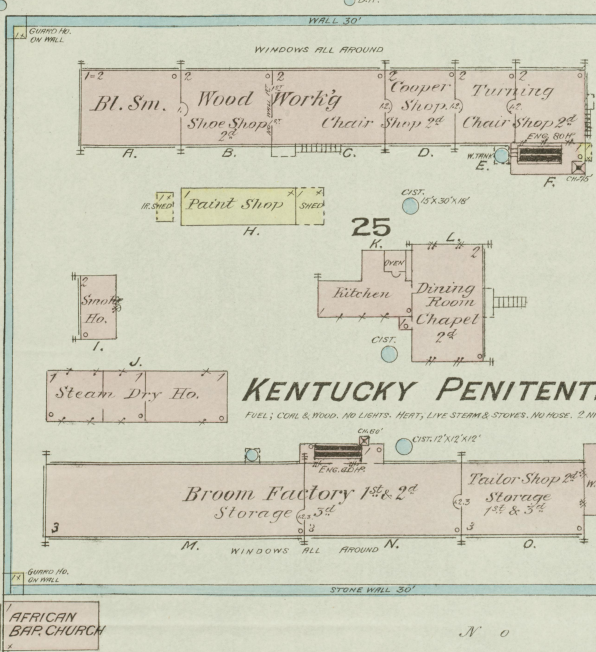
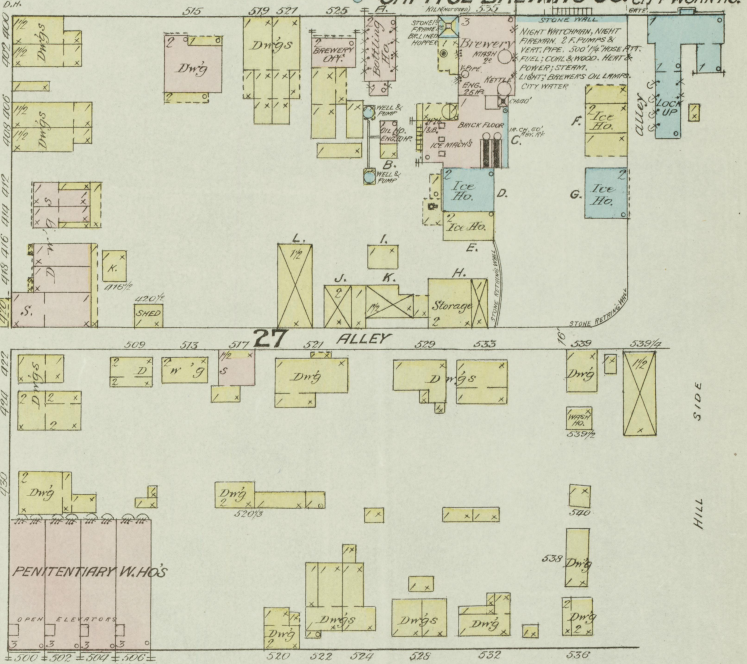
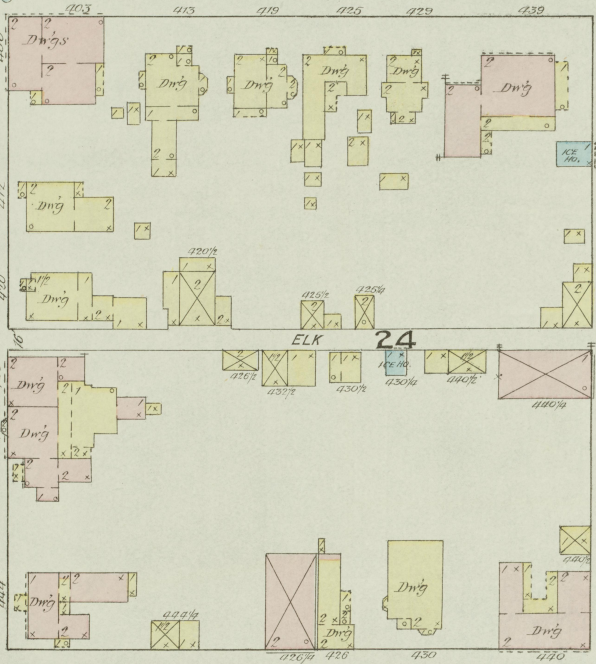
CAPITOL BREWING CO. CITY WORK HO.

MERO

HIGH

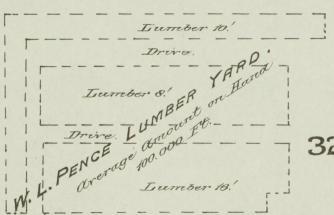
HILL

SEE



JUNE 1886  
FRANKFORT  
KY.

NO EXPOSURES.



32

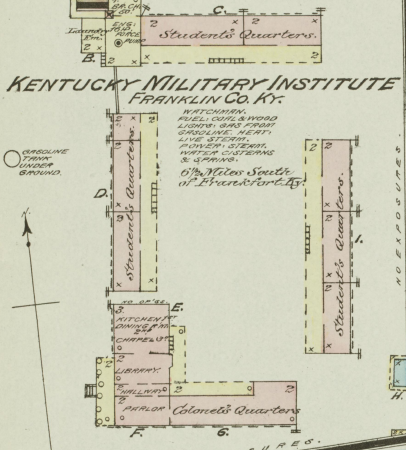
BENSON

BELLE

33

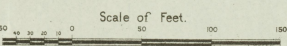
31

KENTUCKY MILITARY INSTITUTE  
FRANKLIN CO. KY.



W.L. PENCE SAW MILL

BRAWNER & MCDANIEL LIVERY



T.J. CONGLETON STEAM SAW MILL

SAW MILL

POUND

WAPPING

FRANKFORT COTTON MILLS

30

29

WILKINSON

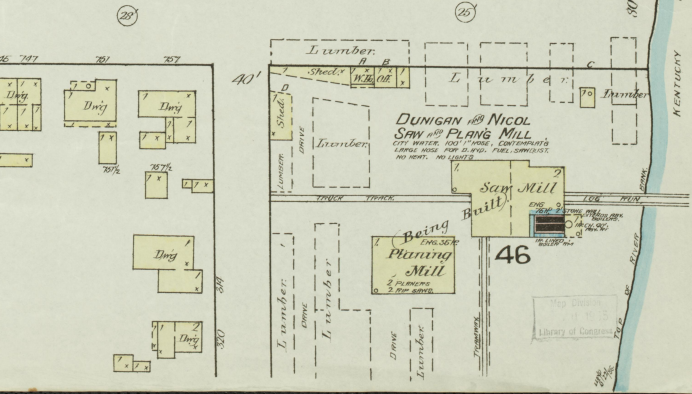
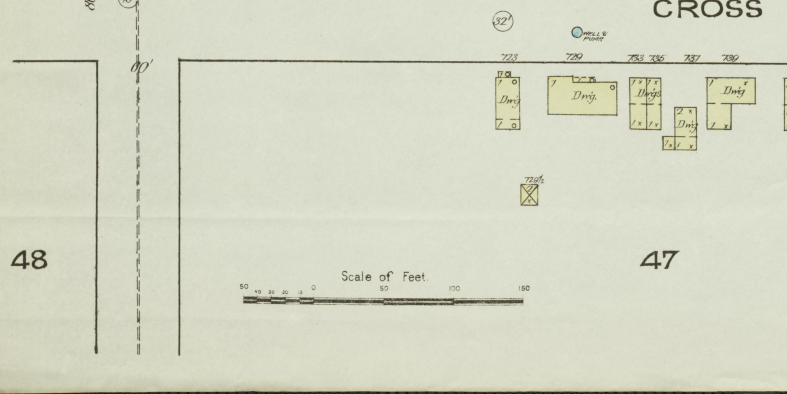
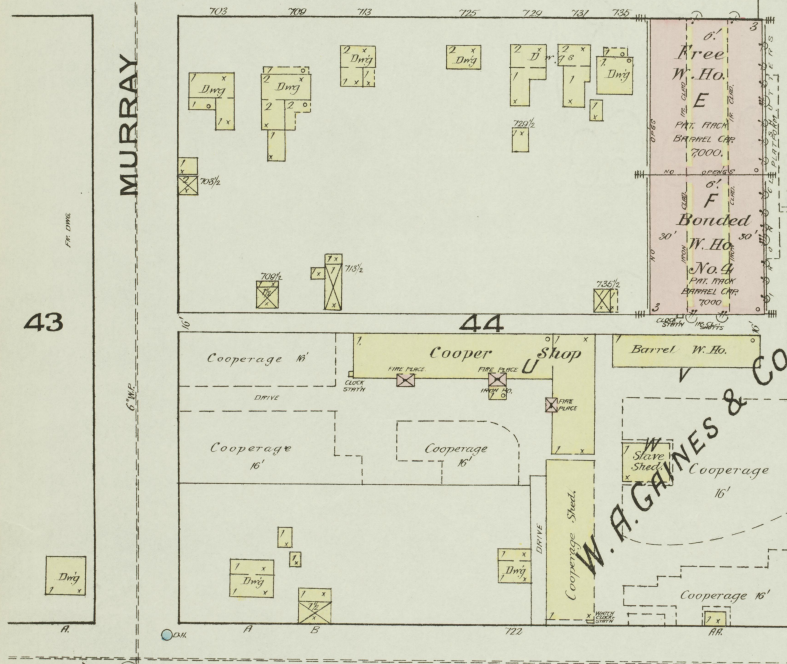
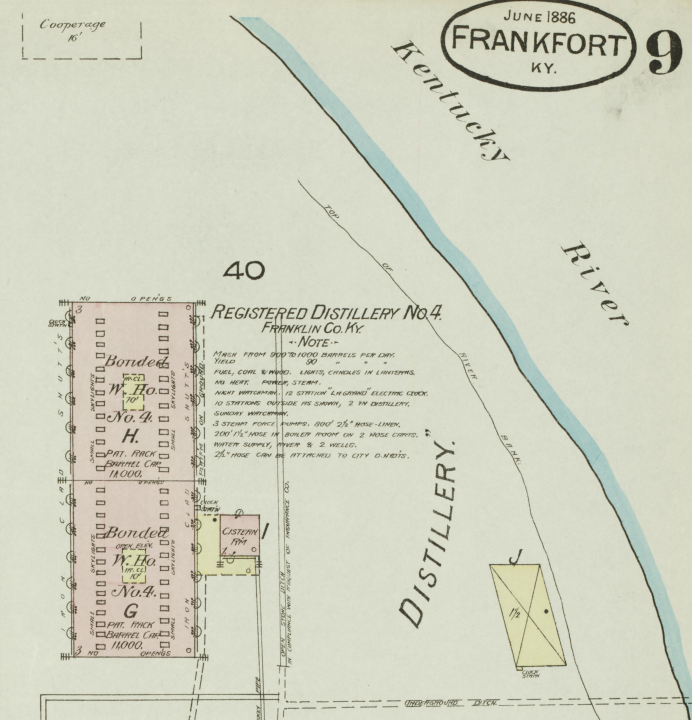
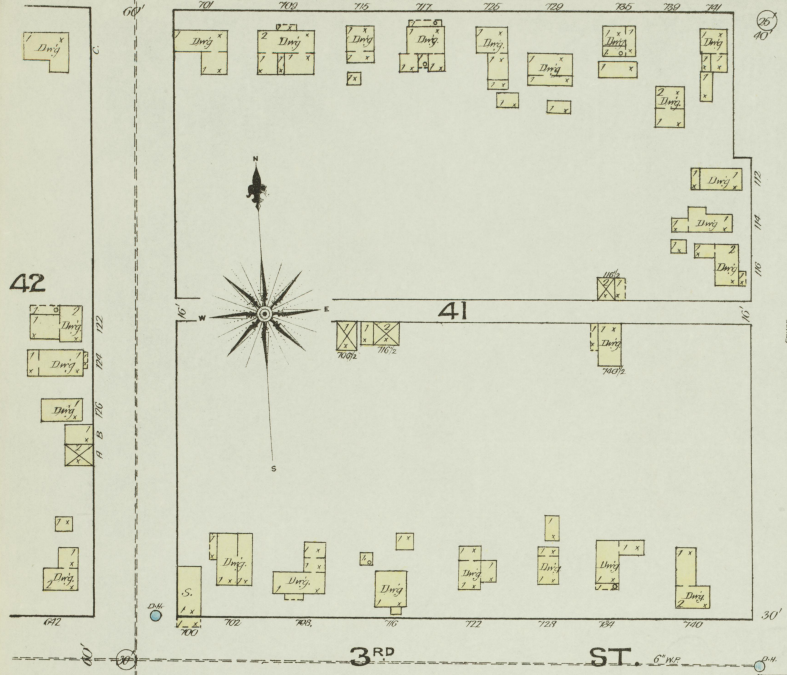
CHOATE & GRAHAM TOBACCO HOBS HEAD FACTORY

PIRE  
HILLSIDE

KENTUCKY RIVER







MURRAY

FOWLER

HERMITAGE

CROSS

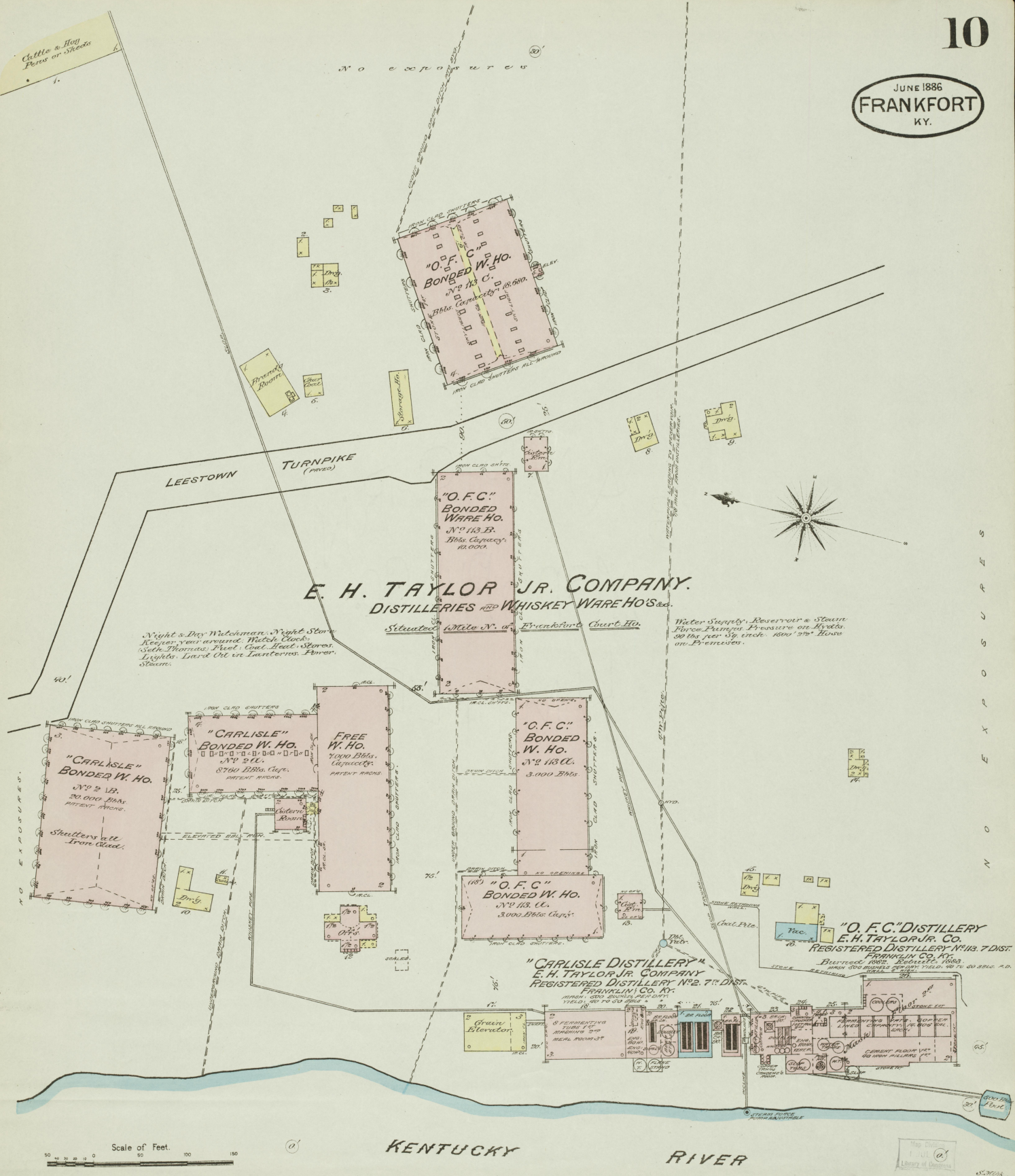
Scale of Feet

DUNGAN & NICOL SAW AND PLANING MILL

Being Planing Mill

Library of Congress

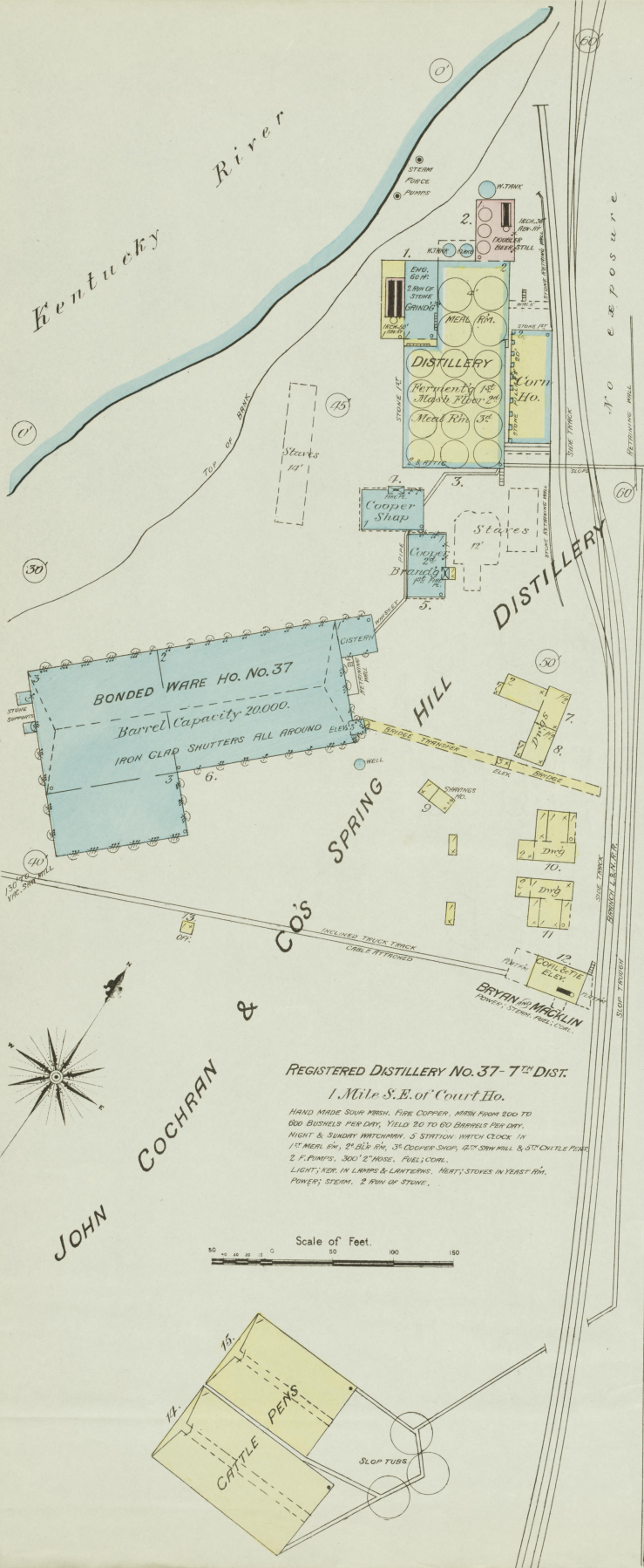
JUNE 1886  
**FRANKFORT**  
KY.



N O E X P O S U R E S

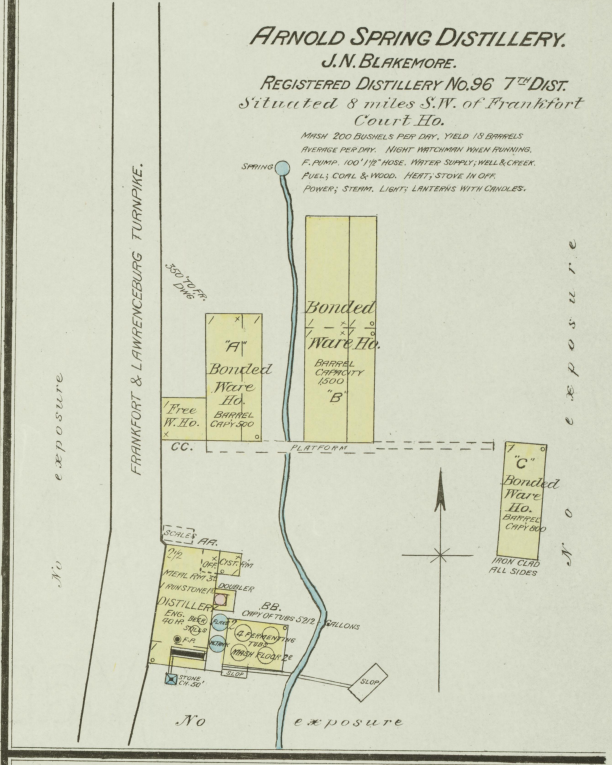
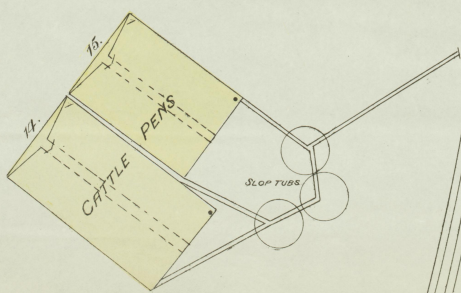
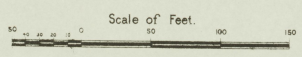
Map of  
JUL 1886  
Library of Congress

JUNE 1886  
FRANKFORT  
KY.



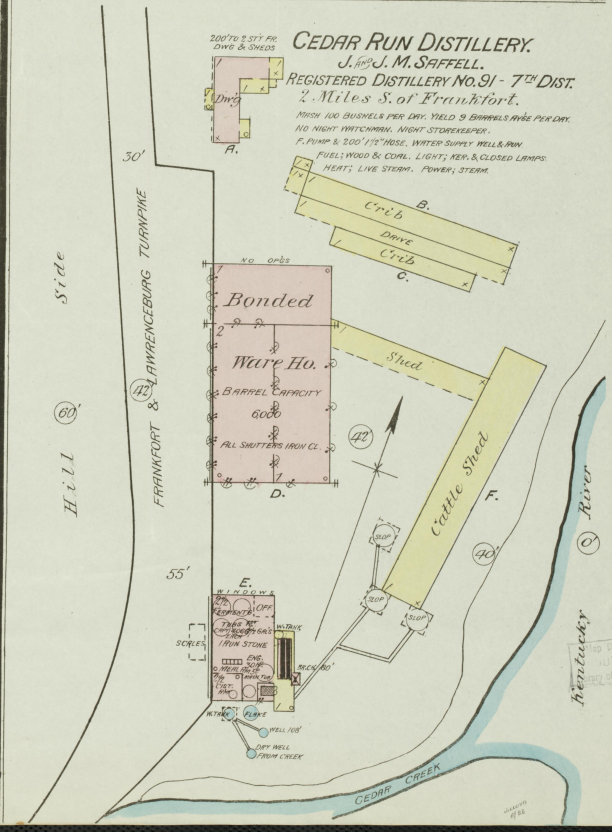
REGISTERED DISTILLERY No. 37 - 7<sup>th</sup> DIST.  
1 Mile S.E. of Court Ho.

HAND MADE SOUV. MASH. FIRE COPPER. MASH FROM 200 TO 600 BUSHELS PER DAY. YIELD 20 TO 60 BARRELS PER DAY.  
NIGHT & SUNDAY WATCHMAN. 3 STATION WATCH CLOCK IN 1<sup>st</sup> MEAL RM. 2<sup>nd</sup> MEAL RM. 3<sup>rd</sup> COOPER SHOP. 4<sup>th</sup> 5<sup>th</sup> 6<sup>th</sup> 7<sup>th</sup> 8<sup>th</sup> 9<sup>th</sup> 10<sup>th</sup> 11<sup>th</sup> 12<sup>th</sup> 13<sup>th</sup> 14<sup>th</sup> 15<sup>th</sup> 16<sup>th</sup> 17<sup>th</sup> 18<sup>th</sup> 19<sup>th</sup> 20<sup>th</sup> 21<sup>th</sup> 22<sup>th</sup> 23<sup>th</sup> 24<sup>th</sup> 25<sup>th</sup> 26<sup>th</sup> 27<sup>th</sup> 28<sup>th</sup> 29<sup>th</sup> 30<sup>th</sup> 31<sup>th</sup> 32<sup>th</sup> 33<sup>th</sup> 34<sup>th</sup> 35<sup>th</sup> 36<sup>th</sup> 37<sup>th</sup> 38<sup>th</sup> 39<sup>th</sup> 40<sup>th</sup> 41<sup>th</sup> 42<sup>th</sup> 43<sup>th</sup> 44<sup>th</sup> 45<sup>th</sup> 46<sup>th</sup> 47<sup>th</sup> 48<sup>th</sup> 49<sup>th</sup> 50<sup>th</sup> 51<sup>th</sup> 52<sup>th</sup> 53<sup>th</sup> 54<sup>th</sup> 55<sup>th</sup> 56<sup>th</sup> 57<sup>th</sup> 58<sup>th</sup> 59<sup>th</sup> 60<sup>th</sup> 61<sup>th</sup> 62<sup>th</sup> 63<sup>th</sup> 64<sup>th</sup> 65<sup>th</sup> 66<sup>th</sup> 67<sup>th</sup> 68<sup>th</sup> 69<sup>th</sup> 70<sup>th</sup> 71<sup>th</sup> 72<sup>th</sup> 73<sup>th</sup> 74<sup>th</sup> 75<sup>th</sup> 76<sup>th</sup> 77<sup>th</sup> 78<sup>th</sup> 79<sup>th</sup> 80<sup>th</sup> 81<sup>th</sup> 82<sup>th</sup> 83<sup>th</sup> 84<sup>th</sup> 85<sup>th</sup> 86<sup>th</sup> 87<sup>th</sup> 88<sup>th</sup> 89<sup>th</sup> 90<sup>th</sup> 91<sup>th</sup> 92<sup>th</sup> 93<sup>th</sup> 94<sup>th</sup> 95<sup>th</sup> 96<sup>th</sup> 97<sup>th</sup> 98<sup>th</sup> 99<sup>th</sup> 100<sup>th</sup>



ARNOLD SPRING DISTILLERY.  
J.N. BLAKEMORE.  
REGISTERED DISTILLERY No. 96 - 7<sup>th</sup> DIST.  
Situated 8 miles S.W. of Frankfort Court Ho.

MASH 200 BUSHELS PER DAY. YIELD 15 BARRELS AVERAGE PER DAY. NIGHT WATCHMAN WHEN RUNNING. F. PUMP. 100' 1/2" HOSE. WATER SUPPLY WELLS, CREEK. FUEL, COAL & WOOD. HEAT; STOVE IN OFF. POWER; STEAM. LIGHT LANTERNS WITH CHIMBLES.



CEDAR RUN DISTILLERY.  
J.M. SAFFELL.  
REGISTERED DISTILLERY No. 91 - 7<sup>th</sup> DIST.  
2 Miles S. of Frankfort.

MASH 100 BUSHELS PER DAY. YIELD 9 BARRELS AVERAGE PER DAY. NO NIGHT WATCHMAN. NIGHT STOVE BURNER. F. PUMP & 500' 1/2" HOSE. WATER SUPPLY WELLS, RAN FUEL, WOOD & COAL. LIGHT; KEYS & CLOSED LAMP. HEAT; LIVE STEAM. POWER, STEAM.

