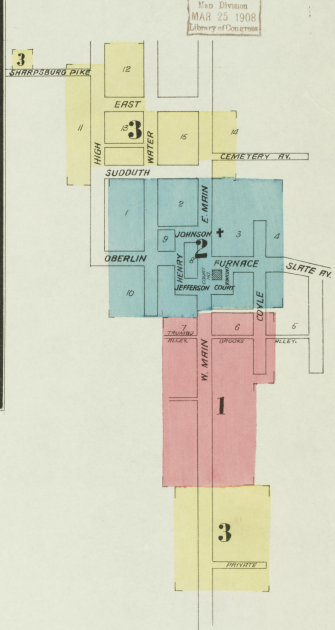




WATER FACILITIES:
Sewerage systems, Private cisterns & wells.

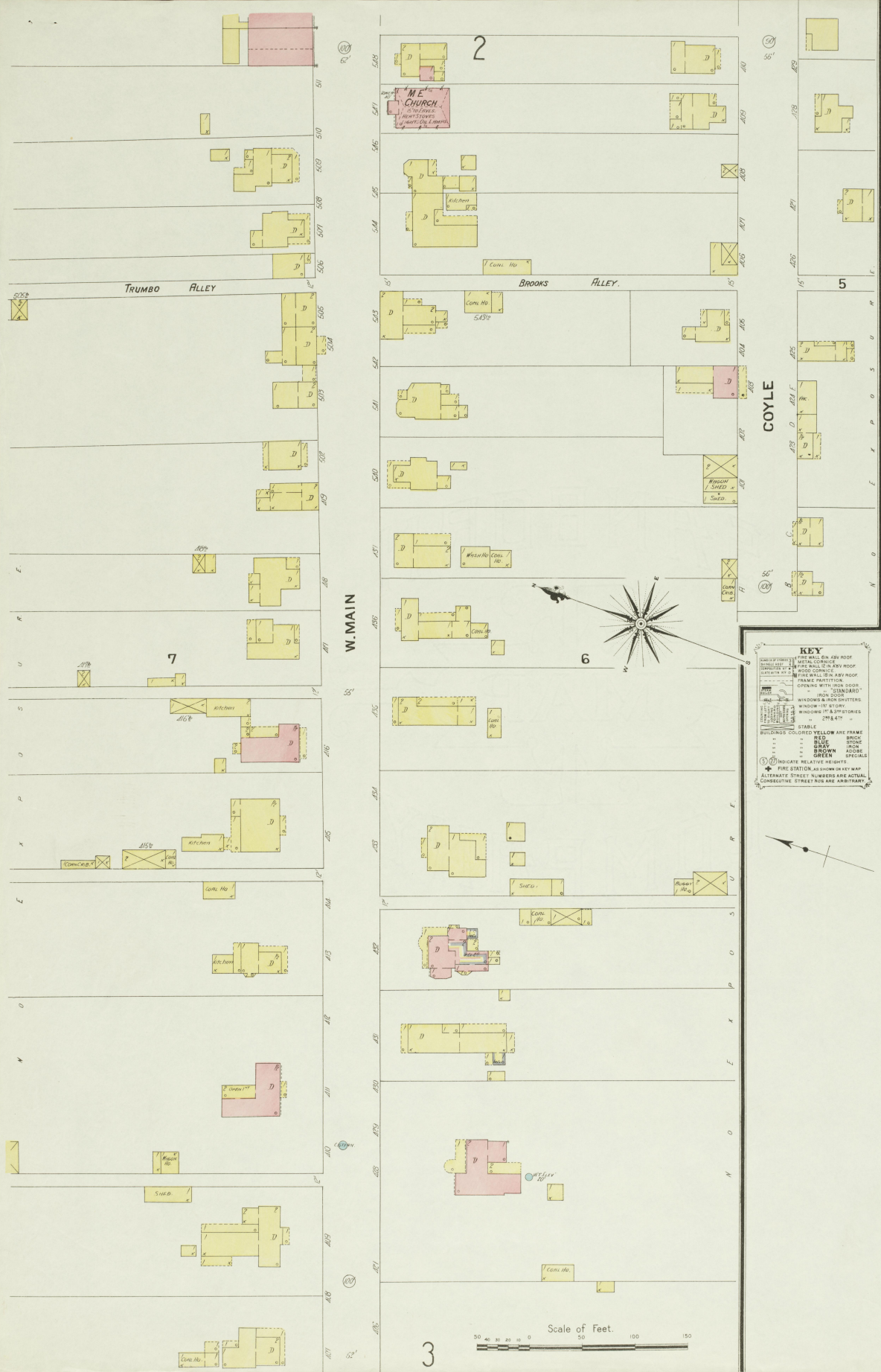
FIRE DEPT.:
Volunteer, paid while at work. One hand engine, One two wheel, hand hose reel, 700' 2" cotton hose, Three 25' ladders. No alarm system.



INDEX

SPECIALS

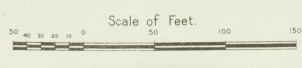
A	Adams Express Co.	2
B	Brown, T. H., Tobacco Warehouse	3
C	Christian Church	2
D	County Court House & Jail	2
E	Dawson, A. H., Coal Yard	2
F	Fire Department	2
G	Goodpaster, J. B., Flour Mills	2
L	Lane, J. W., Tobacco Warehouse	3
M	Methodist Episcopal Church	1
O	Owings House	2
O	Owingsville Electric Light Co.	2
P	Peed & Goodpaster, Tobacco Warehouse	2
P	Post Office	2
P	Presbyterian Church	2
P	Public School	2
R	Richard, J. M., Tobacco Warehouse	3
W	Water, Dell Mills	2



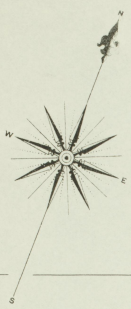
KEY

FIRE WALLS: RED
 FIRE WALLS IN ANY ROOF: RED
 ROOF CORNER: RED
 ROOF CORNER: RED
 FRAME PARTITION: RED
 OPENING WITH SHOCK ROOF: RED
 IRON STANDARD: RED
 WINDOW IN ROOF: RED
 WINDOW IN STORY: RED
 WINDOW IN STORY: RED
 WINDOW IN STORY: RED
 WINDOW IN STORY: RED

INDICATE RELATIVE HEIGHTS
 FIRE STATION AS SHOWN ON MAP
 ALTERNATE STREET NUMBERS ARE ACTUAL
 CONSECUTIVE STREET NUMBERS ARE ARBITRARY



Map Owned by
 JUL 23 1908
 Library of Congress



10

2

JAN. 1908
OWINGSVILLE
KY.

AV.

1

WATER

SUDDUTH

3

OWINGSVILLE ELECTRIC LIGHT CO.
RUN BY THE COUNCIL OF THE CITY OF OWINGSVILLE
FROM COSTING: FURN. OYSTERS, MEAT, STEAK, LIGHTS, FLEC, FURN. STEAK, FUEL, COAL.

FEED & GOODPASTER TOBACCO WARE HO.

OBERLIN

9

HENRY

CHRISTIAN CHURCH
BEST PULPIT, NO. 100, 101, 102, 103, 104, 105, 106, 107, 108, 109, 110, 111, 112, 113, 114, 115, 116, 117, 118, 119, 120, 121, 122, 123, 124, 125, 126, 127, 128, 129, 130, 131, 132, 133, 134, 135, 136, 137, 138, 139, 140, 141, 142, 143, 144, 145, 146, 147, 148, 149, 150, 151, 152, 153, 154, 155, 156, 157, 158, 159, 160, 161, 162, 163, 164, 165, 166, 167, 168, 169, 170, 171, 172, 173, 174, 175, 176, 177, 178, 179, 180, 181, 182, 183, 184, 185, 186, 187, 188, 189, 190, 191, 192, 193, 194, 195, 196, 197, 198, 199, 200, 201, 202, 203, 204, 205, 206, 207, 208, 209, 210, 211, 212, 213, 214, 215, 216, 217, 218, 219, 220, 221, 222, 223, 224, 225, 226, 227, 228, 229, 230, 231, 232, 233, 234, 235, 236, 237, 238, 239, 240, 241, 242, 243, 244, 245, 246, 247, 248, 249, 250, 251, 252, 253, 254, 255, 256, 257, 258, 259, 260, 261, 262, 263, 264, 265, 266, 267, 268, 269, 270, 271, 272, 273, 274, 275, 276, 277, 278, 279, 280, 281, 282, 283, 284, 285, 286, 287, 288, 289, 290, 291, 292, 293, 294, 295, 296, 297, 298, 299, 300, 301, 302, 303, 304, 305, 306, 307, 308, 309, 310, 311, 312, 313, 314, 315, 316, 317, 318, 319, 320, 321, 322, 323, 324, 325, 326, 327, 328, 329, 330, 331, 332, 333, 334, 335, 336, 337, 338, 339, 340, 341, 342, 343, 344, 345, 346, 347, 348, 349, 350, 351, 352, 353, 354, 355, 356, 357, 358, 359, 360, 361, 362, 363, 364, 365, 366, 367, 368, 369, 370, 371, 372, 373, 374, 375, 376, 377, 378, 379, 380, 381, 382, 383, 384, 385, 386, 387, 388, 389, 390, 391, 392, 393, 394, 395, 396, 397, 398, 399, 400, 401, 402, 403, 404, 405, 406, 407, 408, 409, 410, 411, 412, 413, 414, 415, 416, 417, 418, 419, 420, 421, 422, 423, 424, 425, 426, 427, 428, 429, 430, 431, 432, 433, 434, 435, 436, 437, 438, 439, 440, 441, 442, 443, 444, 445, 446, 447, 448, 449, 450, 451, 452, 453, 454, 455, 456, 457, 458, 459, 460, 461, 462, 463, 464, 465, 466, 467, 468, 469, 470, 471, 472, 473, 474, 475, 476, 477, 478, 479, 480, 481, 482, 483, 484, 485, 486, 487, 488, 489, 490, 491, 492, 493, 494, 495, 496, 497, 498, 499, 500, 501, 502, 503, 504, 505, 506, 507, 508, 509, 510, 511, 512, 513, 514, 515, 516, 517, 518, 519, 520, 521, 522, 523, 524, 525, 526, 527, 528, 529, 530, 531, 532, 533, 534, 535, 536, 537, 538, 539, 540, 541, 542, 543, 544, 545, 546, 547, 548, 549, 550, 551, 552, 553, 554, 555, 556, 557, 558, 559, 560, 561, 562, 563, 564, 565, 566, 567, 568, 569, 570, 571, 572, 573, 574, 575, 576, 577, 578, 579, 580, 581, 582, 583, 584, 585, 586, 587, 588, 589, 590, 591, 592, 593, 594, 595, 596, 597, 598, 599, 600, 601, 602, 603, 604, 605, 606, 607, 608, 609, 610, 611, 612, 613, 614, 615, 616, 617, 618, 619, 620, 621, 622, 623, 624, 625, 626, 627, 628, 629, 630, 631, 632, 633, 634, 635, 636, 637, 638, 639, 640, 641, 642, 643, 644, 645, 646, 647, 648, 649, 650, 651, 652, 653, 654, 655, 656, 657, 658, 659, 660, 661, 662, 663, 664, 665, 666, 667, 668, 669, 670, 671, 672, 673, 674, 675, 676, 677, 678, 679, 680, 681, 682, 683, 684, 685, 686, 687, 688, 689, 690, 691, 692, 693, 694, 695, 696, 697, 698, 699, 700, 701, 702, 703, 704, 705, 706, 707, 708, 709, 710, 711, 712, 713, 714, 715, 716, 717, 718, 719, 720, 721, 722, 723, 724, 725, 726, 727, 728, 729, 730, 731, 732, 733, 734, 735, 736, 737, 738, 739, 740, 741, 742, 743, 744, 745, 746, 747, 748, 749, 750, 751, 752, 753, 754, 755, 756, 757, 758, 759, 760, 761, 762, 763, 764, 765, 766, 767, 768, 769, 770, 771, 772, 773, 774, 775, 776, 777, 778, 779, 780, 781, 782, 783, 784, 785, 786, 787, 788, 789, 790, 791, 792, 793, 794, 795, 796, 797, 798, 799, 800, 801, 802, 803, 804, 805, 806, 807, 808, 809, 810, 811, 812, 813, 814, 815, 816, 817, 818, 819, 820, 821, 822, 823, 824, 825, 826, 827, 828, 829, 830, 831, 832, 833, 834, 835, 836, 837, 838, 839, 840, 841, 842, 843, 844, 845, 846, 847, 848, 849, 850, 851, 852, 853, 854, 855, 856, 857, 858, 859, 860, 861, 862, 863, 864, 865, 866, 867, 868, 869, 870, 871, 872, 873, 874, 875, 876, 877, 878, 879, 880, 881, 882, 883, 884, 885, 886, 887, 888, 889, 890, 891, 892, 893, 894, 895, 896, 897, 898, 899, 900, 901, 902, 903, 904, 905, 906, 907, 908, 909, 910, 911, 912, 913, 914, 915, 916, 917, 918, 919, 920, 921, 922, 923, 924, 925, 926, 927, 928, 929, 930, 931, 932, 933, 934, 935, 936, 937, 938, 939, 940, 941, 942, 943, 944, 945, 946, 947, 948, 949, 950, 951, 952, 953, 954, 955, 956, 957, 958, 959, 960, 961, 962, 963, 964, 965, 966, 967, 968, 969, 970, 971, 972, 973, 974, 975, 976, 977, 978, 979, 980, 981, 982, 983, 984, 985, 986, 987, 988, 989, 990, 991, 992, 993, 994, 995, 996, 997, 998, 999, 1000.

JEFFERSON

8

JOHNSON

2

W. MAIN

E. MAIN

COURT

COURT HO.

VIMONT

FURNACE

PUBLIC SCHOOL

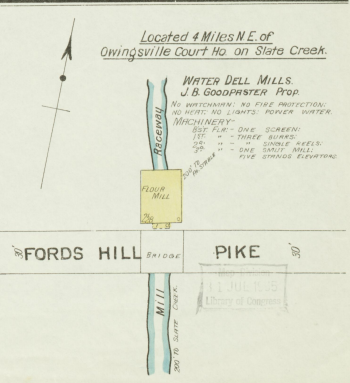
FIRE ENGINE HO.

PRESBY. CHURCH

COYLE

SLATE AV.

4



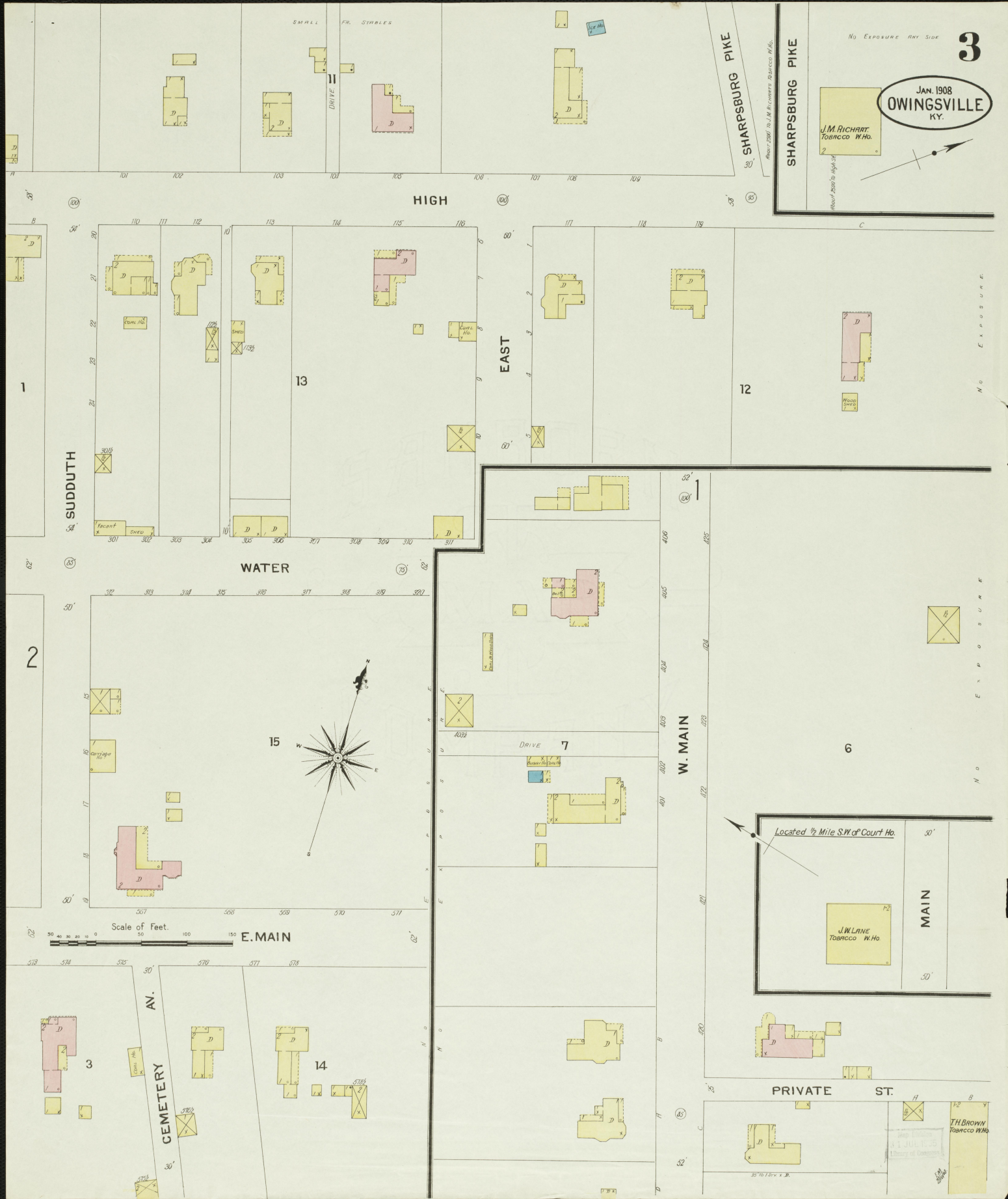
Located 4 Miles N.E. of
Owingsville Court Ho. on Slate Creek.

WATER DELL MILLS
J.B. GOODPASTER, Prop.
NO WATCHMAN; NO FIRE PROTECTION;
NO HOIST; NO LIGHTS; POWER WATER.
MACHINERY:
EST. 1840 - ONE SCREEN;
1870 - THREE BARS;
1880 - ONE SINGLE WHEEL;
1890 - ONE SINGLE WHEEL;
THE ABOVE LISTING

FORDS HILL

PIKE

Scale of Feet.
0 50 100 150



No Exposure Any Side

3

JAN. 1908

OWINGSVILLE
KY.

J.M. RICHART
TOBACCO W.H.O.

SHARPSBURG PIKE

SHARPSBURG PIKE

Plat No. 2007 To J.M. Richart Tobacco W.H.O.

Mount 2006 to High St.

Located 1/2 Mile S.W. of Court Ho.

J.W. LANE
TOBACCO W.H.O.

MAIN

30'

50'

J.H. BROWN
TOBACCO W.H.O.

35' to 75' x 30'