

# Kentucky Alumnus



Vol. VII No. 2

FOOTBALL NUMBER

September 1935

# The Kentucky Alumnus

Published quarterly by the Alumni Association of the University of Kentucky on the campus of the University at Lexington. Subscription to non-members, \$1, to members of the Association 50 cents. Entered as Second Class Matter at the Postoffice at Lexington, Kentucky, May 22, 1929, under the Act of March 3, 1879. Address all communications to Alumni Association, University of Kentucky, Lexington.

VOLUME VII

SEPTEMBER, 1935

Number 2

## OFFICERS 1935-36

Keen Johnson, '22 \_\_\_\_\_ President  
Mrs. David Phelps, '07 \_\_\_\_\_ Vice-President  
R. K. Salyers, ex-'28 \_\_\_\_\_ Secretary  
James Shropshire, '29 \_\_\_\_\_ Treasurer

## EXECUTIVE COMMITTEE

L. K. Frankel, '00 \_\_\_\_\_  
Geo. H. Wilson, '04 \_\_\_\_\_  
Wayland Rhoads, '15 \_\_\_\_\_  
Lullie Logan, '13 \_\_\_\_\_  
E. C. Elliott, '02 \_\_\_\_\_  
Ray B. Moss, '10 \_\_\_\_\_  
Mrs. T. R. Underwood, '19 \_\_\_\_\_  
G. Davis Buckner, '08 \_\_\_\_\_  
Lee McClain, '19 \_\_\_\_\_  
Maury Crutcher, '17 \_\_\_\_\_  
Willy King, '27 \_\_\_\_\_  
Marcus Redwine, '19 \_\_\_\_\_  
Marguerite McLaughlin, '03 \_\_\_\_\_

Presidents of regularly organized Kentucky Alumni Clubs are ex officio members of the Executive Committee.

## U. K. ALUMNI CLUBS

Ashland, Ky.	Harlan, Ky.
Atlanta, Ga.	Kansas
Bell County, Ky.	Lexington, Ky.
Birmingham, Ala.	Louisville, Ky.
Bowling Green, Ky.	Middletown, Ohio
Buffalo, N. Y.	New York City
Chicago, Ill.	Owensboro, Ky.
Cincinnati, Ohio	Paducah, Ky.
Cleveland, Ohio	Philadelphia, Pa.
	Washington, D. C.

For information concerning any club, write to the Alumni Secretary.

## ACTIVE MEMBERSHIP

Dues for active membership in the Alumni Association for the year 1935-36 are \$1. Active members will be sent an issue of The Kentucky Kernel each week during the regular school year. Use the blank on page 16 of this issue of the Alumnus.

## EDITORIAL COMMENT

### LOOKING FORWARD

Students of nature tell us that certain phases of plant and animal life herald with unerring certainty the approach of the various seasons. Some of us depend upon the calendar. But there is no surer sign that fall is at hand than the look of anticipation on the face of the ardent football fan.

Followers of the Blue and White are looking forward to one of the most interesting grid seasons in the University's history. Kentucky's schedule, including as it does some of the nation's outstanding teams, is a formidable one. Those who should know tell us that the Wildcats will be more powerful than last year; to all who saw the 1934 eleven in action this is most reassuring.

In his article on the next page, Gerald Griffin points out that should Kentucky win every game this year, it would be a "cinch" for the Rose Bowl, and that is just a little too much to expect at this stage of the game. It is safe to say, however, that no one who sees the games this fall, either at home or away, will have any occasion for disappointment.

It is our hope that every alumnus within striking distance will be in the stands cheering the Wildcats, from the kick-off till the final gun. Make every game a homecoming game. And when you get to Lexington, take a moment to drop in the Alumni office and say hello.

So, to Chet Wynne and his boys we say, "Good luck — with that schedule, you'll need it!"

### WHAT GOOD IS IT?

Once in a while, some alumnus asks, "What good is an alumni organization?" More often, perhaps, the question is unspoken, but the doubt is evidenced by a lack of interest in alumni activities.

The opportunity to answer such a question is welcomed by any alumni association worthy of the name. That such organizations are found on practically every college campus is evidence that they meet a recognized need. Throughout the country, alumni work is growing in scope and importance; some colleges now offer educational facilities designed especially for alumni who cannot come to the campus for regular class work.

Briefly put, it is a function of your alumni association to aid in

the growth and development of the University, to promote the best interests of its former students, and to enable them to keep in touch with each other and with the institution.

To do these things, it must have, first of all, adequate records. This is no simple task and requires the cooperation of all concerned. It must have a sound membership plan, within the reach of all, that includes regular communications to let alumni know what is going on. It must bring alumni to the campus for class reunions, homecomings and the like, and reach out to them through alumni clubs and similar activities. It must act as a clearing house for all sorts of alumni information.

The services of this association are available to every former student of the University. You are invited to make use of them, and your special attention is called to the article on page 14 and to the message on the back cover.

Waller Rodes, tackle on the University of Kentucky football squad, is the fourth member of his clan to wear a Wildcat uniform. His father, his uncle and a cousin, all famous backs, played football at Kentucky.

Havin  
teams s  
in 1919  
believes  
ing abc  
footed  
Kentuc  
be a gr  
the 193  
lost an  
Even  
and at  
that hi  
siderabl  
better,  
it is ev  
have pr  
field in  
team li  
will be  
No ou  
graduat  
Capt. J  
center a  
will be  
there a  
the ce  
Janes, a  
both of  
and SH  
more—v  
as good  
Joe B  
probably  
tackle,  
Russell  
Hagan,  
contend  
flank.  
What  
Wynne

ity o  
with  
has

## WILDCAT ELEVEN WILL HAVE MORE POWER

By GERALD GRIFFIN, '22

Having watched Wildcat football teams since he was a freshman back in 1919, the writer of this article believes he knows what he is talking about when he comes out flat-footed and expresses the belief that Kentucky's 1935 football team will be a great deal more powerful than the 1934 team which won five and lost an equal number.

Even Chet Wynne, the boss coach and athletic director, will tell you that his team this fall will be considerably improved. Just how much better, of course he will not say, but it is evident that the Wildcats will have probably their greatest backfield in history, with a good first team line. Lack of reserve linemen will be the big drawback.

No outstanding backs were lost by graduation last June, although Capt. Joe Rupert, end; Ernie Janes, center and "Honus" Wagner, tackle, will be sorely missed. However, there are two fine candidates for the center position vacated by Janes, and before the season is over both of them—Gene Myers, junior, and Sherman Hinkebein, sophomore—will be considered at least as good if not better than Janes.

Joe Bosse, 190-pound sophomore, probably will replace Wagner at tackle, while a pair of sophomores, Russell Ellington and Joe "Red" Hagan, will be among the chief contenders for Rupert's place at the flank.

What about the backfield? The Wynne system calls for a spectacu-

lar offense and he has worked toward that end since he came to Lexington in 1934. At the present time it appears that Bert Johnson, the all-Southeastern halfback of last year, will carry the brunt of the burden in advancing the ball. There were few backs in the country Johnson's equal last fall and he improved during spring practice. During the drab spring months Johnson showed improvement in his punting and passing as well as overcoming whatever weaknesses he might have had on defense. Just watch this lad against the big shots this fall.

This writer believes that Johnson

will be the only member of last year's team who will be numbered on Wynne's starting backfield this fall. Sophomores from last year's Kitten outfit which lambasted the Tennessee Rats may occupy the other three places. These eager youngsters are Dick Robinson, a husky southpaw punter and passer, will be the quarterback; Bob Davis, who is almost as fast as Johnson and even more elusive, will be the right halfback, and Elmore Simpson, a defensive terror, will be the fullback unless the writer has missed his guess after watching the spring practices.

While Davis probably is not as fast as "Shipwreck" Kelly—and what football player is—he is a better blocker and is more reliable on defense than the great Springfield Flash. Robinson is a good blocker and is fast for such a large man. Simpson, who hails from Bessemer, Ala., reminds us old timers of Curt Sanders both on offense and defense. Sanders was the answer to a coach's prayer when he backed up a line, and this sophomore, Simpson, can do the job just as well despite his inexperience. Those who saw the practice game between the 'varsity and freshmen last spring will recall that even the powerful Johnson was unable to knock Simpson out of his way and frequently found himself halted at the line of scrimmage when he tangled up with Simpson.

(Continued on Page 8)

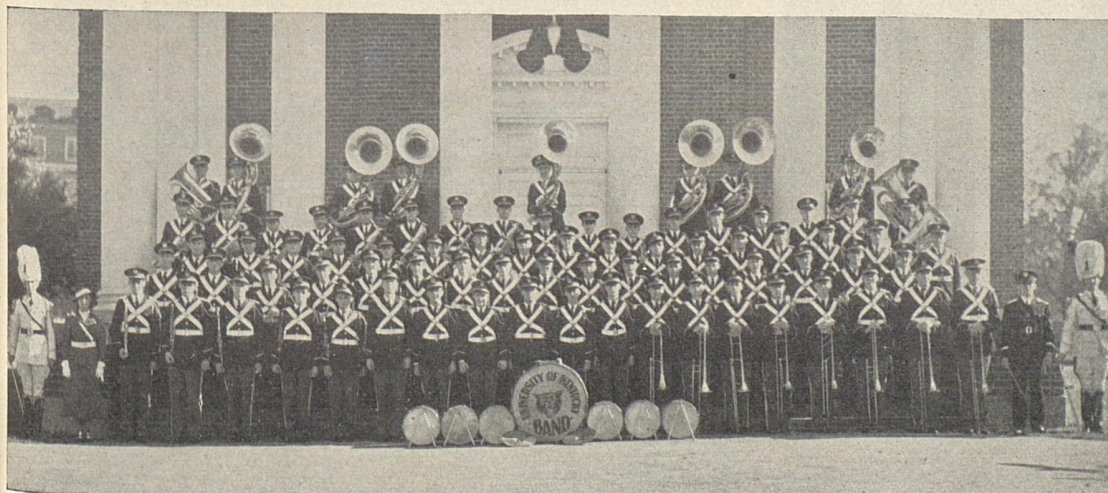
### WHERE WILDCATS PLAY

#### 1935 Schedule

Sept. 21—Maryville	Lexington
Sept. 27—Xavier (Night)	Cincinnati
Oct. 5—Ohio State	Columbus
Oct. 12—Georgia Tech	Lexington
Oct. 19—Auburn	Montgomery
Oct. 26—Freshmen	Lexington
Nov. 2—Alabama	Birmingham
Nov. 9—Florida	Lexington
(HOMECOMING)	
Nov. 16—Tulane	New Orleans
Nov. 23—Tennessee	Lexington

More Football News on Pages 8, 9, and 10.

## "BEST BAND IN DIXIE" TO BE FEATURED AT FOOTBALL GAMES



Here is the crack University of Kentucky band, resplendent in new uniforms purchased last year through the generosity of Wildcat supporters. Always a feature at grid contests on Stoll Field, the band will appear at all home games this year with a new repertoire of stirring music and unique formations. John Lewis, Jr., is director of the unit, which for many years has borne the sobriquet "Best Band in Dixie."

## Busy Year Ahead For Alumni Association

By R. K. SALYERS, Secretary

Revision of alumni records and a liberal membership plan which brings active members The Kentucky Kernel each week during the school year are features of the program set up by the University of Kentucky Alumni Association for the current year.

Keeping up with thousands of former students of the University is no easy matter and requires the cooperation of all concerned. The work of bringing alumni records up to date has been under way for some time, and has reached a point where it becomes necessary to secure the latest information direct from alumni themselves. By filling in and mailing the address blank on the back cover of this issue you can aid in this work, and the information on your record will be just as you want it.

Eventually, the Alumni Office hopes to have records and addresses not only of graduates, but of all former students of the University. Publication of a new alumni direc-

tory will be undertaken as soon as circumstances permit; the last one was published in 1929.

The membership plan for this year is unusually interesting and liberal. Although alumni dues will remain at \$1 (lower than in any university alumni association we know about), active members will receive one issue of The Kentucky Kernel, student publication, each week during the regular school year—a total of about thirty issues.

You know The Kernel—one of the outstanding college publications in the nation—full of interesting news about sports, campus activities and information that keeps you in close touch with all that goes on at the University. Better yet—each issue sent members of the Association will contain a column devoted exclusively to alumni news. You'll want to read it and contribute a bit of news for it now and then.

When you mail the address blank, (don't fail to do that, in any event) just attach a check or dollar bill and become a full-fledged active member for the year 1935-36. Under the new plan, all memberships are for the fiscal year June 1 to May 31. The first issue of The Kernel for you will be off the press about September 20; you won't want to miss a single number, so send in your membership today.

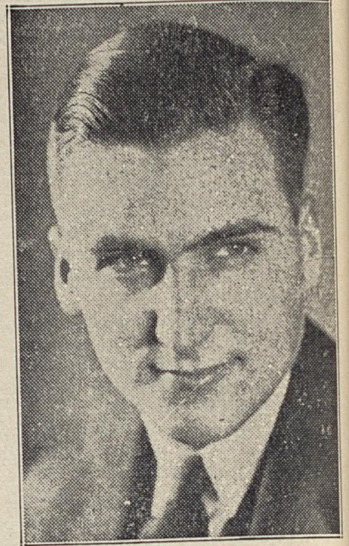
As usual, the Association will sponsor various activities in connection with the Homecoming Game, including the annual Homecoming Dance in the Alumni Gymnasium. Alumni returning for this event are urged to register at headquarters which will be maintained in Lexington hotels.

Since many alumni are unable to return for games at Lexington, but can attend those played elsewhere, the Association plans to maintain Kentucky headquarters in other cities where the Wildcats play this fall.

In order that all alumni may keep alive their contacts with the University, the Alumni Office plans to communicate at least three times during the year with all former students whose correct addresses are on file. This issue of the Alumnus is the first of these mailings; if you hear of anyone who failed to receive it, please let us know.

One phase of the alumni program to which special attention will be given this year is that pertaining to classes and class reunions. Many classes already have a permanent secretary. Do you know the name and address of your class secretary? If not, we'll tell you. Where there is no record of a permanent class

### ALUMNI SECRETARY



BOB SALYERS

Robert K. Salyers, Ex-'28, research assistant in the president's office at the University during the past year, was appointed secretary of the Alumni Association at a meeting of the Executive Committee held last April. Mr. Salyers was for several years advertising manager of the Moore Corporation, Joliet, Illinois. In 1932, he returned to the University for graduate work in Commerce, and during 1933 and 1934 was in charge of publicity for the Educational Commission and the Kentucky Education Association.

secretary, the Alumni Office will ask someone to serve until the next class reunion. This plan for better class organization also contemplates, in addition to the class secretary, a representative for each college having graduates in the class. You'll hear more about this later.

Every day the Alumni Office handles requests for addresses of alumni, information about football and basketball games and other University matters. It is ready to serve in every possible way, and letters from alumni are always more than welcome. When may we expect a letter from you?

Col. J. H. Graham, newly-appointed dean of the College of Engineering, University of Kentucky, was a great football player as an undergraduate at the University of Kentucky, from which he was graduated in the class of 1900. He played left guard on the "Immortals of 1898," which team was undefeated, untied, and unscored on.

### ALUMNI PRESIDENT



KEEN JOHNSON

Keen Johnson, '22, Richmond, Kentucky, was elected president of the Alumni Association for the year 1935-36, succeeding Judge Charles I. Dawson, Louisville. He is editor of the Richmond Daily Register and is widely known throughout the state.

# ALUMNI RETURN FOR REUNION

With the usual shaking of hands, recalling of names, reminiscent recitals of youthful adventures—good, bad, and otherwise—and renewal of acquaintances both old and new, University alumni from far and near trekked back to the campus again this year to revel in the atmosphere of college activity and commencement time, and to enjoy a program of entertainment planned especially for them.

Thursday, May 30, was the day set aside especially for alumni activities. Events of the day started at 9 a. m. with registration in the Alumni office. First to register was John Willmott, class of '95, and he had just finished filling out his card when he was greeted by Rufus L. Weaver, also of '95. Others followed in quick succession and many gathered in the Alumni Office to talk over old times.

First event was the Class Day program by members of the senior class, revived after a lapse of several years. The noon hour brought class members together at reunion luncheons, informal in nature, and always an enjoyable occasion for those returning to the campus. Reunion classes this year were those ending in "0", "5", and the class of '33.

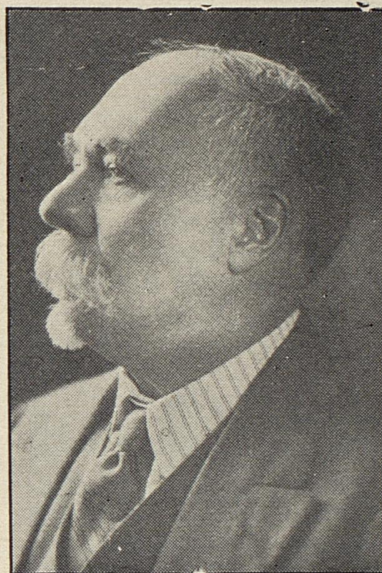
The afternoon program began with baccalaureate exercises in Memorial hall at 3 p. m. Dr. Arthur Braden, president of Transylvania University, was the speaker. At 4:30, President and Mrs. McVey entertained alumni and guests of the graduating class with a tea at Maxwell Place.

More than 200 alumni attended the annual banquet, held at 7 o'clock in the ballroom of the Phoenix Hotel. Arthur Bryson, Ashland, was toastmaster, and introduced Congressman James Scrugham, '00, of Nevada, who made the principal address. Mr. George Gess, '85, Lexington, extended greetings from the fifty-year class, oldest to be represented at the banquet. Dr. A. M. Peter, member of the class of '80, who was present at various events during the day, was unable to attend the evening program. In the absence of Judge Charles I. Dawson, president of the Association, Mr. L. L. Frankel, '00, chairman of the executive committee, introduced Keen Johnson, who had been elected president of the Association for 1935-36.

An unusual feature of the banquet was a musical program presented by the University Radio Studio orchestra, under the direction of Elmer G. Suizer, with Mary Louise McKenna and Harlowe Dean, Lexington, as soloists.

Climax of Alumni Day was the Radio Salute to Alumni, broadcast through the University Extension Studios of WHAS, Louisville, from 10:35 until 11:00 p. m. Greetings were extended by Rufus L. Weaver, '95, R. E. Edwards, '10, Annette Kelly, '25, and Joe Rupert, '35, and musical numbers popular during each of the periods represented were played by the studio orchestra. President McVey spoke on behalf of the University. Visiting alumni were present in the studio during the presentation of the broadcast.

## REPRESENTS CLASS OF '80 AT REUNION



DR. A. M. PETER

Many alumni attended commencement exercises held Friday morning at 10 a. m. in the Alumni gymnasium. Following commencement, a luncheon for graduates, alumni, and friends was held in the University Commons. The annual meeting of the Alumni Association was held immediately after the luncheon, with about 75 members of the Association attending. Dr. G. Davis Buckner, member of the Alumni Executive Committee, presided. Reports were made by officers of the Association and plans for the year discussed.

### PRIZE FOR BEST LIBRARY

Major Samuel M. Wilson, of Lexington, recently announced that he will award a \$50 prize to the University student having the best library at the close of the next school year.

Details and conditions of the award have not been definitely worked out, but the prize probably will be presented during the 1936 Commencement program.

When Coach Wynne calls for "Red" he is likely to be answered by four fiery thatched football players, all of whom are called "Red." They are "Red" Simpson, "Red" Sympson, "Red" Hagan, and "Red" Craig, three of whom are sophomores.

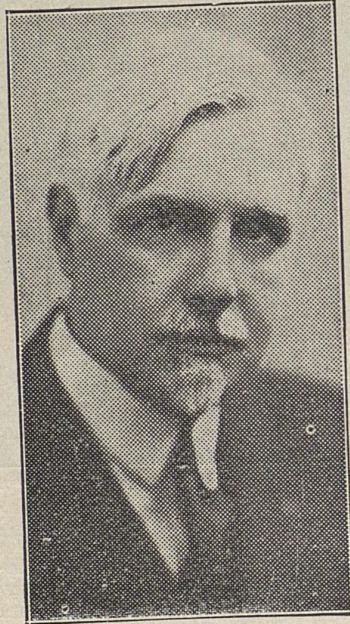
## RETURNING ALUMNI AT MAXWELL PLACE



Here are some of the returning alumni who attended the tea given by President and Mrs. McVey on Alumni Day.

## NEWS FROM THE CAMPUS

### ENGINEERING DEAN



COL. JAMES H. GRAHAM

Colonel James Hiram Graham, Louisville, consulting engineer, former president of the Indian Refining Company, author and alumnus of the University of Kentucky in the class of 1900, has been appointed dean of the University of Kentucky College of Engineering to succeed the late F. Paul Anderson who died April 8, 1934.

Colonel Graham received his degree of Bachelor of Science in Civil Engineering from the University of Kentucky in 1900 and up to the time of the World War was engaged in the practice of engineering, ranging from railway location construction, the driving of tunnels and the development of methods for the concrete lining of them, coal mining and metal mining, work with the smelting of ores, the construction of earth and concrete dams; and in addition he carried on as a contractor.

In June 1917, he entered the war as a captain in the Corps of Engineers, United States Army. During the period of the war he created four separate and distinct organizations within the American Expeditionary Forces. After the Armistice Colonel Graham, in connection with the Corps of Engineers, organ-

ized and supervised the repair of over seven thousand miles of highway in France and occupied Germany. He was awarded the Distinguished Service Medal of our government for "meritorious and distinguished services in positions of great responsibility," and was also given the rank of Officer in the Legion of Honor by the French government.

Since the war Colonel Graham has been engaged as a consultant in engineering and industrial matters in this country and abroad, and at one time served as president of the Indian Refining Company. He is an author as well as an engineer and last year his book, "Joseph, the Husband of Mary," was published. He brings to the College of Engineering a wide experience and knowledge of industrial affairs.

### Enrollment Record Reached By 1935 Summer Session

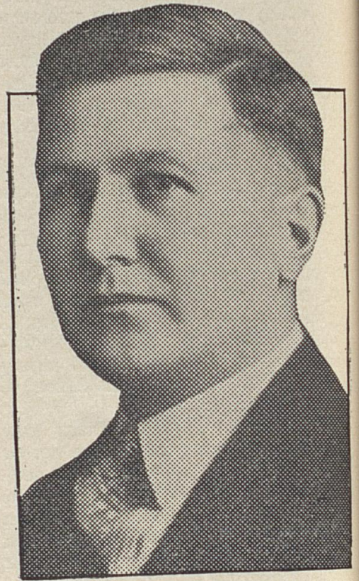
The conferring of 118 undergraduate and 37 graduate degrees at annual commencement exercises on Friday, August 16 in Memorial Hall brought to a close the largest and one of the most successful Summer Sessions in the history of the University.

Dr. Archibald Henderson, head of the mathematics department of the University of North Carolina, at Chapel Hill, was the principal speaker, his subject being "The Need for a Higher Form of Scholarship in American Universities." Dr. Jesse Adams, director of the Summer Sessions, conferred the degrees and gave the pledge to the senior class.

Featuring an imposing array of prominent speakers and entertainers, the first Summer Session opened June 10 with an all-time high enrollment of 1,716, surpassing the former record for a summer school term of 1,695 made in 1931. Prominent speakers and teachers who conducted conferences and seminars during the term included Dr. Frederick L. Paxon, professor of history, University of California; Dr. Annette Phelan, member of the executive committee of the National Society for the Prevention of Blindness; and Cale Young Rice, author and critic.

Performances by the Coffer-Miller players and by Frank Parker, noted diseur, and a presentation of "The Mikado," by summer session students under the direction of Prof. Carl Lampert, were features of the

### EXTENSION DIRECTOR



PROF. LOUIS CLIFTON

Louis Clifton, assistant director of the Department of University Extension since 1926, was appointed director of extension at the May meeting of the University Board of Trustees, according to a recent bulletin from the president's office.

Wellington Patrick, for many years director of the department, is now devoting his full time to teaching in the College of Education.

Mr. Clifton is a graduate of the class of 1925 and received his Master of Arts degree at the University in 1929. He is secretary-treasurer of the local chapter of Phi Delta Kappa, national honorary graduate educational fraternity.

extra-curricular program. Band concerts by the University summer school band under the direction of John Lewis were held weekly. Twenty-seven states of the nation and 118 counties of Kentucky were represented at the first session.

Enrollment for the second term also established a record, a total of 1,028 entering, showing an increase of 85 over the previous second term record of 954 students, made in 1931. One hundred and eight counties of Kentucky and nineteen other states were represented.

Prominent speakers who visited  
(Continued on Page 15)

### Experiment Station's Fiftieth Anniversary to Be Celebrated September 25

By **JOB D. TURNER**, Chairman  
Committee on Arrangements

Celebration on September 25 of the Fiftieth Anniversary of the establishment of the Kentucky Agricultural Experiment Station will be a most interesting event, because of its historic interest and by reason of the program to be presented.

The principal address of the occasion will be delivered by Dean F. B. Mumford, College of Agriculture, University of Missouri, on the subject: "Agriculture and Science." Dr. Frank L. McVey, President of the University, will preside at the meeting. Dean Thomas P. Cooper, Director of the Kentucky Agricultural Experiment Station for the past seventeen years, will speak on the subject: "Half a Century in Retrospect," telling of the development of the institution since its establishment two years before the passage of the Hatch Act giving national aid in building and maintaining such institutions.

"Melville Amassa Scovell—Founder and Builder" will be the subject of Professor George Roberts as he tells of the enduring work of the first Dean and Director. Senator Perry B. Gaines, prominent Carroll County farmer, will speak on the subject: "As the Farmer Views the Experiment Station."

The Kentucky Agricultural Experiment Station has published during its establishment more than 399 bulletins and circulars on varied subjects of agriculture. It has acquired for experimental uses 600 acres of land in the central farm

at Lexington, Kentucky, 600 acres at the western Kentucky Sub-station at Princeton, and 15,000 acres of forest land in Breathitt and Perry counties. Constant service is given in problems of soil fertility, crops and crop pests, live stock and live stock diseases, to the farmers of the state and nation, and its research work is internationally known. It is also charged with the enforcement of a number of regulatory measures, such as the fertilizer, feed, seed and nursery laws. The Public Service laboratories, housed within its buildings, examine approximately 136,000 samples a year for the State Board of Health of Kentucky and others interested in health work.

Visitors will be invited to inspect the laboratories, equipment, experimental plots, herds and flocks of the Experiment Station. The meeting will be held in the Amphitheater of Memorial Hall if the weather will permit, but in case of inclement weather it will be held in the Hall.

Alumni of the University are especially invited to attend the celebration exercises. A committee composed of Professors A. M. Peter, H. E. Curtis, George Roberts, E. S. Good, T. R. Bryant and Job D. Turner, Chairman, is in charge of the arrangements.

### Six Building Projects Are Submitted to W. P. A.

Application for WPA projects to finance the erection of buildings at the University totalling approximately \$1,100,000 was recently made to Washington authorities.

Proposed structures include a student union building, a music and art building, an engineering building, a home economics building, a law building and library, and a central heating plant.

The proposed student union building is a project which has greatly interested both faculty and students for the past few years. Student organizations have sponsored activities to arouse interest in the project and establish a student union fund, and approximately \$4,000 has already been raised in this way.

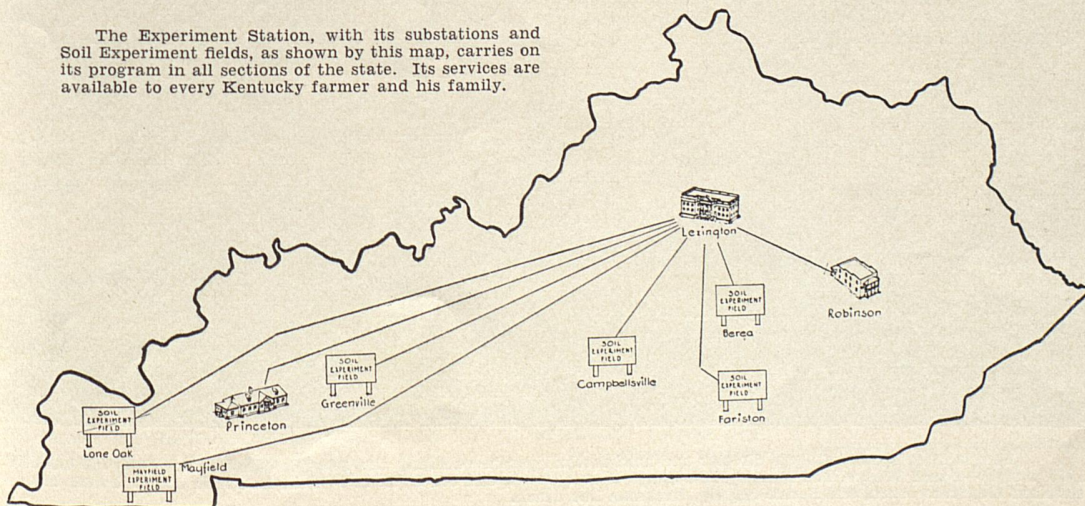
A special committee to aid in drawing up plans for erection and operation of the building has been appointed by President McVey. It is composed of the following: James S. Shropshire, director of student publications, chairman; Roy Moreland, professor of Law; Maury J. Crutcher, superintendent of buildings and grounds; Sarah Blanding, dean of women; M. E. Potter, professor of physical education; Robert K. Salyers, research assistant in the president's office; and Robert Haun, professor of commerce. Two students, Frances Kerr, Lexington, and David Difford, Louisville, are also members of the committee.

Although no definite arrangements have been made it is hoped that the student union building will include offices of the Alumni Association.

### KENTUCKY POET LAUREATE ISSUES NEW BOOK

"The Valleys of Parnassus" is the title of a collection of original poetry just off the press, authored by Dr. J. T. C. "Cotton" Noe, poet laureate of Kentucky, and professor of education, emeritus, at the University of Kentucky. This volume contains a selection of Noe's best lyrics from previously published volumes, plus twenty which have not hitherto been included in his books.

The Experiment Station, with its substations and Soil Experiment fields, as shown by this map, carries on its program in all sections of the state. Its services are available to every Kentucky farmer and his family.



CTOR

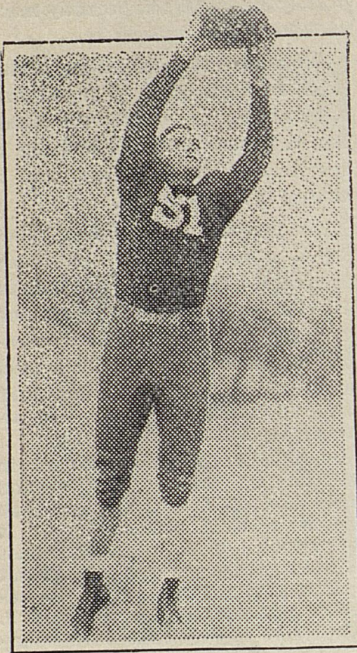
ON

director of  
University Ex-  
appointed  
the May  
y Board of  
recent bul-  
s office.  
for many  
partment, is  
e to teach-  
ducation.  
ate of the  
d his Mas-  
University  
y-treasurer  
Phi Delta  
ry graduate

am. Band  
ity summer  
direction of  
ekly. Twen-  
nation and  
y were rep-  
sion.  
second term  
d, a total of  
an increase  
second term  
made in 1931.  
counties of  
other states  
who visited  
ge 15)

# COACH WYNNE SAYS GRID PROSPECTS ARE GOOD

## WILDCAT CAPTAIN



**JIMMY LONG**  
Jimmy Long, who played a stellar game at left end last year, will captain the Big Blue during the 1935 season.

(EDITOR'S NOTE: Believing that alumni would like a word from "headquarters" as to grid prospects for this fall, THE ALUMNUS asked Coach Wynne for a short statement. Here it is.)

By **CHET WYNNE**

Our prospects are very much improved over last year. We only lost four or five boys through graduation, and I believe the boys from the freshman squad will more than make up for the loss.

On the other hand, the team should have considerably more knowledge concerning their offense than they had last year — it being the first year that the coaches and squad were together—and of course over the past year we have learned to understand each other and also to analyze the strong points and weaknesses of the various members of the squad.

I am looking for a much improved team although our schedule is difficult, and we may not win any more games than we did last year, but you can rest assured that we will have a better team on the field.

### WILDCAT ELEVEN WILL HAVE MORE POWER

(CONTINUED FROM PAGE THREE)

Although the team will be improved, don't expect the 'Cats to go

through their season undefeated; it can't be done because they have to play the two most powerful teams in the Nation in Alabama and Ohio State. Any team powerful enough to defeat both of these teams would be a sure thing for the Rose Bowl this year and Kentucky is not yet a Rose Bowl aspirant.

Many of us recall the humiliation we experienced a decade or more ago when teams thought nothing of smacking our Wildcats all over the lot and defeating Kentucky by fifty points or more. That will not happen this year. The 'Cats may take a few lickings but you alumni will be proud of them even in defeat.

The material is better than it has been in several years and the boys have had the advantage of Chet Wynne's coaching for a full year. They have learned more about him and have learned to admire him more than ever. They will turn on the heat for Wynne as they never have before for any coach at Kentucky.

The squad will be larger numerically than it was last year and there is more speed and determination to be found among the candidates. Probably a majority of the first team will be sophomores but they are talented sophs and you need not worry on that account.

## MEN WHO GUIDE DESTINIES OF BLUE AND WHITE



Here is Chet Wynne, athletic director and head football coach, outlining the season's plans to members of his staff. Left to right—Coach Wynne, Ted Twomey, line coach; Porter Grant, end coach; B. L. Pribble, freshman coach; Frank Mosely, assistant freshman coach, and Bernie Shively, freshman line coach.



# CRISP WEATHER! OLD FRIENDS! GOOD TIMES! WHICH MEANS "A KENTUCKY HOMECOMING!"

Kentucky alumni will come home November 9! Put a red circle around that date, alumni, make your plans, pack your bags, and arrange to leave the kids with Aunt Minnie, for on that date Kentucky meets the University of Florida on the gridiron, and on that date, so the Athletic Council has decreed it, loyal alumni will celebrate their annual homecoming.

A Kentucky homecoming! What a vision it stirs up of roast turkey with plenty of stuffing; crisp November weather, when "the frost is on the pumpkin" and on the julep cup; when old friends meet, to renew acquaintances, cheer lustily for the big blue, and gather at the end of the day for the annual homecoming dance at the Alumni gymnasium.

This particular homecoming will have added significance, however, for those loyal Kentuckians who were in school at the University in the halcyon days of 1911 to 1916. For Kentucky's gridiron tussle with Florida will bring back to the campus an old friend, teacher and coach, Dr. John J. Tigert, former United States Commissioner of Education, now president of the University of Florida, and from 1911 to 1916 a member of the University of Kentucky teaching staff and football coach.

Doctor Tigert came to the University in 1911 as head of the department of Philosophy and Psychology; but in the fall of 1912 he was induced to act as assistant football coach, taking over the head coaching job in 1913. In 1914 he acted as coach of the freshmen, and in 1915-16 he was athletic director and head coach of the Wildcats.

So, the Kentucky-Florida game will be more than a football encounter; more than a friendly rivalry between two southern schools; it will bring back to Kentucky an old coach, respected teacher and good friend, and Kentucky alumni will be here en masse to welcome President Tigert of the University of Florida.

According to Coach Chet Wynne, Kentucky will have a considerably improved team this fall, and returning alumni should take heart in this statement, as Kentucky's team last year was a heartening sight in itself, playing with the fire and enthusiasm inspired by its new and efficient coaching staff and the pep of the famous Notre Dame system, with Coach Wynne's own variations.

Only four men were lost to the

By HELEN KING

team through graduation; Captain Joe Rupert, stellar end; Wagner, powerful tackle and one of the most dependable that the University has ever boasted; Ernie Janes, Kentucky's fine pivot man last season; and Harry Walker, quarterback. According to Coach Wynne, the sophomore crop this year will more

a bigger and better one than those which have gone before, and that, in the parlance of the campus, is sumpin'!

## U. K. GRADUATES LISTED IN COLLEGE "WHO'S WHO"

Mary Caroline Terrell, '35, and George Trimble Skinner, '33, have been chosen as outstanding students to appear in the 1935 edition of "Who's Who Among Students in American Universities and Colleges," according to a recent announcement.

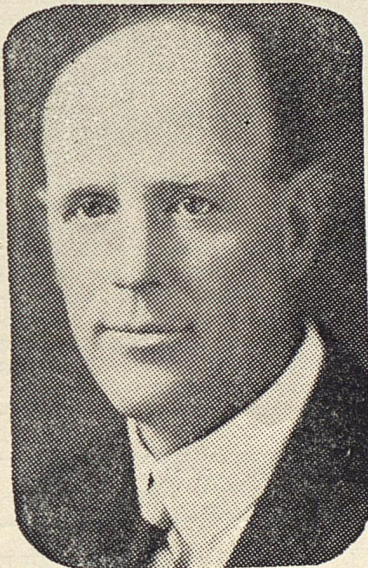
This organization of outstanding students is the only one in the country that is completely devoid of politics and initiation fees. Students selected to appear are chosen not because of scholarship alone, but also on the basis of leadership, service, extra-curricular activities, and characteristics pointing toward future usefulness to society and to the business world.

Miss Terrell and Mr. Skinner were selected as representative of their college among the most outstanding college men and women in the United States. Nearly every college in the United States and Canada is represented in the book. This honor is the greatest recognition that a boy or girl can attain while in college because only one-half of one per cent are selected from each institution.

A graduate of the class of '35, Miss Terrell is teaching this summer at Ormsby Village, Anchorage, Kentucky, and will go this fall to Flat Gap, Kentucky, as teacher of home economics and general science.

Mr. Skinner, who graduated in '33, is now working toward a law degree at the University.

## HONOR GUEST



JOHN J. TIGERT

than off-set Kentucky's losses through graduation, which is a comforting thought to alumni.

In addition to the new material which will feed into the varsity from last year's freshman team, Kentucky will have the advantage of a year's training in the intricacies of the new system inaugurated by Coach Wynne and his staff, which, added to the growing understanding which has arisen through better acquaintance between coaches and squad, will combine to make Kentucky's team a more accurate gridiron machine.

If plans mature, Kentucky and Florida teams will be invited to a giant pep-meeting the night preceding the homecoming game, and Dr. John J. Tigert, Coach Chet Wynne and other notables will give talks to the assembled squads and homecoming on November 9 will be

## DON'T FORGET THE ANNUAL HOMECOMING DANCE

Homecoming activities will culminate in the annual Homecoming Dance to be held in the Alumni gymnasium November 9, following the Kentucky-Florida game. Make your plans to attend this event, which is given under the auspices of the Alumni Association and the Lexington Alumni club. All your friends will be there!

**BRINGING U. K. TO YOU!**

Former students attending games with Ohio State, Auburn, Alabama, and Tulane will have an opportunity to renew contact with other alumni and with the University by visiting University of Kentucky headquarters to be established at centrally-located hotels in Columbus, Montgomery, Birmingham, and New Orleans.

Location of headquarters will be announced in The Kernel, in daily newspapers, and in letters to alumni living in territory where games are to be played. Make your plans to arrive in town Saturday morning and spend a little time at headquarters before going to the game. Representatives of the Association and of the University, officers of local alumni clubs—and other alumni of course—will be on hand to greet you and tell you "what's going on."

When you "hit town," look for Kentucky headquarters—we'll be looking for you!

**UNIVERSITY EXHIBIT AT STATE FAIR PLANNED**

An instructive program of moving pictures, demonstrations, experiments, and music will be a daily feature of the University of Kentucky exhibit at the 1935 Kentucky

State Fair. The University will occupy a line of booths in the M. & M. building extending half the length of the structure.

The University Extension department will operate a motion picture show in which the latest developments in educational films will be exhibited. The University library will show collections of rare books and maps, and have a reading table on which visitors may find their Kentucky county newspapers.

The geological exhibit will include electric lighted cave cases and a working model showing the formation of sand dunes. The department of Physics will have a number of "work-it-yourself" gadgets illustrating various phenomena of space and gravity, and the College of Engineering will feature, among other apparatus, materials showing various methods of air conditioning.

An Art exhibit will be a part of the University of Kentucky display for the first time and a member of the University Art department staff will do painting and sketching during the progress of the fair.

A reception booth containing a miniature stage will feature a string trio and Mary Louise McKenna, Lexington soprano. Various University publications will be distributed and a reading shelf will contain publications by members of the University staff. Alumni attending the fair are urged to visit the University exhibit and to "make themselves known."

**HOBART RYLAND TO BE ROMANCE LANGUAGE HEAD**

Dr. Hobart Ryland, who has been associate professor at the Virginia Military Institute, has been appointed acting head of the department of Romance Languages, University of Kentucky. In 1925, Doctor Ryland was appointed by the Institute of International Education as assistant in English at the Ecole Normale of Le Manz, France. He spent the summer of 1927 at the summer school of Grenoble University, and the summer of 1928 at Besancon. He also studied at the University of Aix Marseilles during the year 1928-29, and for six months at the Sorbonne in 1930-31.

Doctor Ryland received his doctor's degree with honorable mention at Aix-Marseilles in 1931. He studied Spanish at the University of Seville, and is now studying German at the University of Heidelberg and hopes to get the German Ph.D. in July. His thesis for the French doctor's degree was published at Rodez, France, in 1931 and is entitled "Francois Fabie Regionaliste." His thesis for the German doctor's degree will be written in France and will treat the sources of Rostand's play "Cyrano de Bergerac."

His wife is a landscape painter and was born in Kentucky. The Rylands have two children.

Tear out and mail with check to Manager Football Ticket Sales, University of Kentucky, Lexington

**UNIVERSITY OF KENTUCKY  
APPLICATION FOR RESERVED SEAT FOOTBALL TICKETS  
1935**

Name.....

Address..... City.....

I hereby apply for the following reservations:

**GAMES AT HOME:**

Sept. 21—Maryville	- - - - -	No. desired.....	@ \$1.00	\$.....
Oct. 12—Georgia Tech	- - - - -	No. desired.....	@ \$2.25	\$.....
Nov. 9—Florida	- - - - -	No. desired.....	@ \$2.25	\$.....
Nov. 28—Tennessee	- - - - -	No. desired.....	@ \$2.50	\$.....

**GAMES AWAY FROM HOME:**

Sept. 27—Xavier (Night)	- - - - -	No. desired.....	@ \$1.50	\$.....
Oct. 5—Ohio State	- - - - -	No. desired.....	@ \$2.00	\$.....
Oct. 19—Auburn	- - - - -	No. desired.....	@ \$2.50	\$.....
Nov. 2—Alabama	- - - - -	No. desired.....	@ \$2.50	\$.....
Nov. 16—Tulane	- - - - -	No. desired.....	@ \$2.20	\$.....

Registry fee - - - \$.....20

**TOTAL AMOUNT ENCLOSED** | \$.....

(To the above prices the 10% Federal Tax and the 3% Sales Tax has been added)

**LIBRARY**

A special pamphlet alumni display University mementos benefit turned to

One can William Lincoln four books Lincoln, His Wife the Little Liquor."

Two collections '20, who depicting Pictures old toll stage portraits collection.

Public Morgan, received in 1933, and volunteered on display

**OFFICERS**

Officer ed by me active m '22, Rich David P Cloverpo L. K. Fr Wilson, reelected tive Com term. C the comm expire an Lulie Lo '02, and Members Johnson Mrs. Th King, '2 Lee McC '19, and Marguer of the Le ex officio R. K. S James S one-year Commit

Bill T Kentuck who now plantatio alma m practice the imp and foot

### LIBRARY HAS EXHIBIT FOR RETURNING ALUMNI

A special exhibit of books and pamphlets written by University alumni was arranged and put on display in the main foyer of the University library during Commencement week this year for the benefit of visiting alumni who returned to attend 1935 class reunions.

One case of the exhibit contained William H. Townsend's collection of Lincolniana, including copies of his four books on Lincoln, "Abraham Lincoln, Defendant," "Lincoln and His Wife's Home Town," "Lincoln, the Litigant," and "Lincoln and Liquor."

Two other cases contained the collection of J. Winston Coleman, '20, who has written several volumes depicting early days of Kentucky. Pictures of Henry Clay's carriage, old toll houses, a printed list of stage coach rules, and interesting portraits were included in the collection.

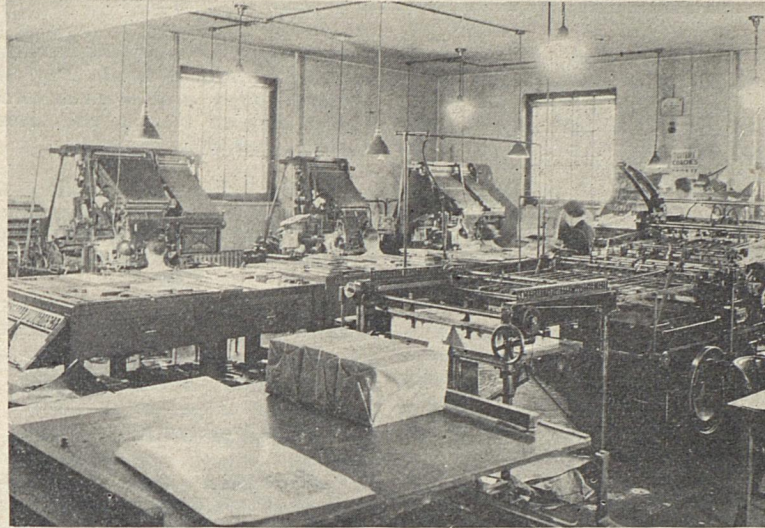
Publications by Dr. Thomas H. Morgan, University graduate who received the Nobel prize in medicine in 1933, and numerous pamphlets and volumes by other alumni completed the exhibit, which remained on display until July 1.

### OFFICERS FOR 1935-36

Officers of the Association, elected by means of ballots mailed to all active members, are Keen Johnson, '22, Richmond, Ky., president; Mrs. David Phelps (Anne Crenshaw, '07), Cloverport, Ky., vice-president. L. K. Frankel, '00, and Dr. George Wilson, '04, both of Lexington, were reelected as members of the Executive Committee for a three-year term. Other elected members of the committee and dates their terms expire are Wayland Rhoads, '15, and Lullie Logan, '13, 197; E. C. Elliott, '02, and Ray B. Moss, '10, 1936. Members appointed by President Johnson for a one-year term are Mrs. Thos. Underwood, '19, Willy King, '27, G. Davis Buckner, '08, Lee McClain, '19, Marcus Redwine, '19, and Maury Crutcher, '17. Miss Marguerite McLaughlin, president of the Lexington Alumni Club, is an ex officio member. The secretary, R. K. Salyers, and the treasurer, James Shropshire, are appointed for one-year terms by the Executive Committee.

Bill Tuttle, famous University of Kentucky halfback of 20 years ago, who now manages a big pineapple plantation in Hawaii, visited his alma mater during spring football practice and voiced amazement at the improvement of the Wildcats and football in general.

### U. K. JOURNALISM SCHOOL HAS "A" RATING



View showing portion of Student-owned and Student-operated Plant of The Kentucky Kernel

The University department of Journalism is listed in the "A" class schools of journalism, along with 32 leading colleges and universities having schools and departments of journalism, a recent compilation issued by the National Printer Journalist reveals.

In the class "A" professional group are listed such prominent schools of journalism as Columbia University, University of Missouri, and Northwestern University, and only three other southern Universities besides Kentucky are included.

The University of Kentucky department of Journalism was established in 1914 with Professor Enoch Grehan, former managing editor of a Lexington paper and well-known columnist, at its head. Under the direction of Professor Grehan, with Miss Marguerite McLaughlin, assistant professor of Journalism who came to the University with Mr. Grehan, the department has developed to its present status.

The department of Journalism at the University is the only one in the United States that has fostered and caused to be paid for out of student earnings, through the medium of the student newspaper and allied activities, its own printing plant. This has been installed at an aggregate cost of about \$30,000, and is complete in every detail.

The department has developed many newspaper men and women who have attained prominence in local and national fields. Sixteen either own or edit Kentucky news-

papers; seven are holding executive positions with the associated press; eight are members of the editorial and reportorial staff of a single metropolitan newspaper; others are engaged in editorial and reportorial positions in various sections of the country, and a great many are gaining recognition in the field of creative writing.

A course leading to the degree of Bachelor of Arts in Journalism is offered at the University, as well as various courses in the Arts College with Journalism as the major subject.

The Kentucky Kernel, campus paper published by students in the department of journalism, will be sent to active members of the Alumni Association during the regular school year. In addition to campus news and features, the edition of The Kernel sent alumni will contain news of special interest to them.

Two former University of Kentucky athletes, now lawyers, frequently oppose each other in the courtroom. They are James Park, vigorous Commonwealth's Attorney, and George R. Smith, noted criminal lawyer. Park was a star quarterback on the football team and was a pitcher on the baseball team. Smith was a vicious tackle. Park pitched for the St. Louis Browns in the American League after his graduation until he grooved one to a Boston Red Sox pitcher whose name was Babe Ruth. Ruth lost the ball. Park lost his job.

❖ ❖ ❖ NEWS OF THE CLASSES ❖ ❖ ❖

'79

**Napoleon Bonaparte Hays**, one of the oldest living graduates of the University, is a practicing attorney in Lexington. His address is 351 Lexington avenue.

**Charles Graham Blakely**, another of the "old timers," is a general merchant and real estate man in Topeka, Kansas. His home is at 1434 Polk street, Topeka.

'80

Although unable to attend the reunion of his class at commencement time, **N. J. Weller**, Pineville, Ky., sent greetings to the alumni in a letter to **Dr. A. M. Peter**, Experiment Station, Lexington, who represented the class at Alumni Day activities. Thank you, Mr. Weller! Dr. Peter is trying to get in touch with **George C. Whatley**, now living in Birmingham, Alabama. The fourth member of the class, **James Crawford**, is deceased.

'85

**George T. Gess**, 701 S. Limestone, Lexington, represented the class of '85 at the annual alumni banquet, and made an enjoyable talk. His son, **John T. Gess**, Engineering, '30, was also on hand for the reunion of his class.

'95

The successful reunion of the "Ninety-Fivers" was due in large measure to the efforts of **Miss Mary Didlake**, University of Kentucky, Lexington, class secretary. Three of the nineteen members of the class are deceased. Eight of the remaining sixteen came back for reunions—a 50 per cent attendance record!

'99

**George Roberts**, class secretary, recently sent the Alumni office a photo of the class taken at the time of graduation. Photos of classes, campus groups and individuals are welcome additions to the alumni files. Send them along!

'03

**R. T. Whittinghill** is superintendent of schools at Hazard, Ky. His daughter, Sarah, the second to finish at the University, graduated last June and was prominent in campus activities.

**Edward Kelly**, entomologist at Kansas State College, Manhattan, Kansas, says in a letter to Dean Melcher that he will be glad to see any of the old Kentucky grads if they are passing through. He lives at 1621 Humboldt street in Manhattan, "one block north, turn to the right and stop at the second house" at the junction of highways

40 north and 40 south. He has made important studies of Hessian flies, chinch bugs, wheat strawworms, horse bots, ox warbles, and several garden and orchard pests.

'06

**Phillip Reifkin** is with the Hoffman Combustion Engineering Company, Union Trust Building, Washington, D. C.

'07

**W. D. Nicholls**, professor and farm operator in the College of Agricul-

**WANTED—ALUMNI NEWS!**

A department devoted exclusively to news and features of special interest to former students of the University will be a feature of *The Kernel* issue which is sent weekly to all active members of the Association. The Alumni Office wants news about you both for this column and for the alumni records. If you change your address—take a new job—get married—write a book—receive an honorary or advanced degree—meet a classmate you haven't seen for years—do anything or hear anything of interest—let us know about it. A postcard will do, but we'd rather have a letter at least once a year letting us know where you are and how you are getting along. May we count on your help in this matter?

ture at the University, is a member of the county-wide Citizens Educational Committee and of the Fayette County Board of Education. He has one son, William, graduate of the class of '34, one daughter in the University at present, and another daughter coming on this fall.

'09

**Susan Grey Akers** is Acting Head of the Library Science School, University of North Carolina, Chapel Hill. Her book "Simple Library Cataloging," second edition, has been translated into Chinese. She's at home at 516 Franklin Street in Chapel Hill.

**Phillip L. Blumenthal**, for the past two years treasurer of the Electric City Box Co., Buffalo, N. Y., is now president and treasurer of the Purity Yeast Co., Inc., at Buffalo. He is also secretary-treasurer of the Lactal Analytic Laboratories there. His address is 316 Parker Avenue, Buffalo.

**Hugh B. Sanders** is superintendent of the explosive plant of the

Hercules Powder Co. in Bessemer, Ala. He lives at 2311 Clarendon Avenue.

'10

"Animal Crackers," "Flat Tires on the Farm," and "Women, not Wine" are some of the publications of **W. G. Clugston**, writer and humorist, whose offices are in the Orpheum Building in Topeka, Kansas. His home address is 300 Country Club Drive, Topeka.

**Richard E. Edwards** is Director of the Eastern Kentucky State Teachers College Training School, at Richmond, Ky. He is a life member of the National Education Association and has written several articles on rural problems. Lives at 326 E. Second street, Richmond.

**Frederick Garman** is Assistant Foreman in the testing laboratories of the Pennsylvania Railroad, Altoona, Pennsylvania. His work includes testing of iron and steel, paints, cements, lubrication and illuminating oils, and also extensive travel over the railway system testing new sources of water supply.

'11

**Lucius E. Smith**, formerly medical director of the Breathitt county health department at Jackson, Kentucky, is now executive secretary of the Kentucky Tuberculosis Association, working with the State Board of Health in tuberculosis control. His address, 439 Fairlawn Road, Louisville.

'12

**Atha Gill Jones** is branch manager of the Missouri Inspection Bureau at Kansas City, Missouri. His address is 231 West Sixth Street, Kansas City.

'13

**William H. McAdams** is professor of chemical engineering at the Massachusetts Institute of Technology in Cambridge. He's the author of more than thirty articles on chemical engineering, and lives in Newton, Massachusetts, 21 Claremont Street.

'14

**Allen W. Gullion** delivered the commencement address of the University of Hawaii in Honolulu recently, and was honored with the degree of doctor of philosophy. His address is Federal Building, Honolulu, T. H.

**Carl E. Lauer** is now with the Texas Company in Port Arthur, Texas, as Chief Chemist. He's at home at 300 Ave. A in Port Arthur.

**Charles C. Wilson** is a lawyer and banker in Meade, Kansas, with offices in the Meade State Bank build-

ing. He has been a member of the Board of Regents which directs the activities of Kansas' five state schools.

'15

**Robert D. Hawkins**, College of Engineering, University of Kentucky, was elected permanent secretary by members of the class present at the reunion on Alumni day. Members are urged to get in touch with Mr. Hawkins so that he may have their correct addresses.

**Temple Rice Hollcroft**, professor of Mathematics at Wells College in Aurora, New York, is the author of twenty-eight research papers in mathematics, nine of which have been published in foreign countries. During the past ten years, he has traveled extensively in Europe doing research work in mathematics, has lectured in several European universities under the auspices of the Carnegie Endowment for International Peace, and has attended International Mathematical Congresses in Canada and Switzerland.

'16

**James D. Garnett** recently moved to Lexington from Columbus, Ohio, and is associated with Clay-Ingels Company, contractors.

'17

**Henry P. Horine** is engaged in promotional work for air-conditioning and electric service to Kansas cities, with headquarters at the Kansas Gas and Electric Company in Wichita. His home is at 301 North Oliver.

**Linda Purnell Smith** classifies herself in a note to Dean Melcher as a "homemaker." She lives at 1730 Illinois Street, Lawrence, Kans.

'18

**Harry Raymond Allen** is Chemist in Fertilizer Control at the University of Kentucky Experiment Station. His home address is 168 Maxwellton Court, Lexington.

'19

**Marcus Redwine** practices law in Winchester, Kentucky, with offices in the Clark County National Bank Building. He is a member of the Alumni Executive Committee. His address is 419 Maple St., Winchester.

**Harry Pierson Pettit** heads the department of mathematics at Marquette University in Milwaukee, Wisconsin. He is the author of several textbooks in algebra. His home address is 4524 N. Bartlett Avenue, Milwaukee.

**Frederick Jackson** is with the Lexington Leader in Lexington, and covers many University activities. He lives in Versailles, Ky., at 113 Montgomery street.

'20

**Frank W. Tuttle** is head of the department of Economics and Busi-

ness Administration of Southwestern College in Winfield, Kansas. His address is 1440 East Fourth Street.

**William C. Brown** is in the moving, storage and auction business in Lexington with offices at 256-58 West Vine street. His home address is 228 Castlewood Drive, Lexington.

**Maric R. Barkley**, College of Agriculture, University of Kentucky, did a fine job in getting members of the class of '20 back for their 15th anniversary reunion. **Grover Creech**,

#### MELCHER CONTINUES STUDY

C. R. Melcher, Dean of Men Emeritus, is continuing the study of University of Kentucky alumni and their achievements, and is anxious to hear from all former students.

So far the answers to his requests for the information desired by the University, as stated by President McVey, have been most gratifying and evidence a true spirit of loyalty to the University and of real service and success of our alumni in the various fields of their activities.

The reports received will assist in bringing the records of the alumni office up-to-date and also in issuing a new Alumni Directory. The Tuesday Editions of The Kernel, which will be mailed to all active members of the Association, will contain interesting notes from reports received. If you have not already heard from Dean Melcher, you will soon.

Creech Coal Co., Pineville, Kentucky, was elected permanent secretary. Be sure that he has your correct address.

'21

**Edgar Neal Thurman** is assistant Chemical Director of the Flint, Michigan laboratory of E. I. du Pont de nemours and Company. His home is at 1508 Welch Boulevard.

**Charles L. Taylor** teaches Crops and Orchard and Manages the Scholl farm at Western Kentucky State Teachers College. He lives on Route 4, Bowling Green, Kentucky.

**Leland B. Snoddy** is research physicist at the Rouss Physical Laboratory, University of Virginia. He lives at Box 1064, Jefferson Park Circle, University, Virginia.

**Gordie Young** is assistant Superintendent of Public Instruction of Kentucky at Frankfort. His address is 724 Shelby street, Frankfort. His daughter plans to enter the University this fall.

'22

**Nelson Bush Conkwright**, professor of mathematics at State University of Iowa in Iowa City, is the author of a recently published text on "Differential Equations." He may be reached at the department of mathematics, State University of Iowa, Iowa City.

**Aubrey Armentrout** is a practicing surgeon in Martinsburg, West Virginia. His office is on the Public Square and his home is at 1015 West King street.

**William Hugh Peal** practices law in New York, with offices at 25 Broadway. His home address is 50 E. 10th Street.

'23

**William Mason Phipps** is analyst for the department of Agronomy at Cornell University, Ithaca, N. Y. He lives at 43 Forest Home Drive, Ithaca.

**George Ridgley McDaniel** is Research Chemist for the Stand Silicate Co., 4701 Paddock Road, Cincinnati, Ohio. His home is at 1328 Joseph street.

'24

**Elbert DeCoursey** specializes in Pathology and is captain in the Medical Corps, U. S. Army, in Washington. His address is Army Medical Museum, Washington. He was recently detailed for special study in pathology and cancer in New York City.

**Kenneth B. Harding** teaches in the history department of Mt. Sterling High school, Mt. Sterling, Kentucky. He lives at 8 Holt Avenue.

**Raymond A. Stoesser** is factory representative for the Standard Sanitary Manufacturing Company, located at 32-04 Northern Boulevard, Long Island City, New York. His residence address is 117-14 Union Turnpike, Kew Gardens, Long Island.

'25

**H. H. Thornberry** conducts biological research for the Citrus Experiment Station, Riverside, California. He is working at present on a new disease of peach trees in California. His home address is 3371 2nd Street, Riverside.

**Joseph K. Roberts** is assistant director of research for the Standard Oil Company of Indiana at Whiting. He lives at 2034 Davis Avenue, Whiting, Indiana.

Graduates of '25, back for their tenth anniversary reunion, selected **Paul Matthews**, 660 S. Limestone, Lexington, as class secretary. Paul is supervisor of music in Lexington City Schools. Serving with him on the reunion committee were **Helen King** and **Bess Parry**, both at the University, **Annelle Kelly**, 352 South Broadway, who represented the class on the Alumni broadcast, and

**Louis Clifton**, recently appointed Director of Extension at the University.

**George R. Kavanaugh** is Business Manager of Berea College, Berea, Kentucky. He lives at 23 Jackson street.

**Richard E. Jagers** is State Director of Teacher Training of Kentucky, with headquarters in Frankfort. He is chairman of the co-operative committee on Rural Education in the United States. His home address is the Cromwell Apartments, Frankfort.

**Robert Kinnaird Giovannoli** second lieutenant in the regular air corps of the U. S. Army, is stationed at Wright Field, Dayton, Ohio. He is at present assigned to the Power Plant Branch of the Engineering Division.

**Ritchie Stevenson**, of Frankfort, is recovering at King's Daughters Hospital from injuries received when her car collided with a truck. She suffered a broken clavicle and cuts and bruises.

'26

**Cecil M. Charles** teaches Anatomy at the Washington University School of Medicine in St. Louis, Missouri. He is also a practicing physician, specializing in Internal Medicine and Diagnosis. His address, 368 N. Taylor, St. Louis.

**Gordon Bennett Pennybaker** is associate professor of Biology at Murray State Teachers College, Murray, Kentucky.

**Marjorie H. Morrison** is research chemist for E. I. duPont de Nemours and Company, stationed at Newburgh, N. Y. She lives at 194 South street in Newburgh.

'27

**Emma Irene Yates** teaches Latin in Holmes High school, Covington, Kentucky. Her home is in Latonia, Kentucky.

**Grant S. Wiley**, chemist for Collins Manufacturing Company, North Wilbraham, Massachusetts, paper manufacturers, is in charge of the control and testing of paper while in process of manufacture.

**S. F. Shawhan** is with the Carrier Corporation, 850 Frelinghuysen avenue, Newark, New Jersey.

'28

**Susan Peffer** is assistant professor of English and Dean of Women at Murray State Teachers College, Murray, Kentucky.

'29

**Lombard Squires** specializes in the chemistry of rubber and is instructor of Chemical Engineering at Massachusetts Institute of Technology, Wingham, Massachusetts.

**Paul Porter**, now assistant to the administrator of the AAA, gave two

addresses at the University during the second summer term. His subject was "The Importance of the AAA."

**Wayne W. Garnett** is an actuarial scientist with the Central Life Assurance Society, Des Moines, Iowa.

**Alex Black** is instructor in Animal Nutrition at Pennsylvania State College, State College, Pennsylvania. He is the author of several pamphlets on energy metabolism.

**David M. Young**, geologist at the University of Kentucky, Lexington, recently made a special study of Kentucky meteorites and is planning a book on this subject.

'30

**Billy Whitlow**, College of Education, University of Kentucky, is secretary of the class of '30. Let her know your whereabouts and what you are doing. At their reunion luncheon, members of class selected the following to represent the various colleges: Margaret Fry, Engineering; Virgil Couch, Commerce; Mildred Graham, Education; Willie Mae Watson, Agriculture; Lola Robinson, Arts and Sciences.

**Laurence K. Shropshire** is employed by the Lexington Leader, Lexington. His home address is 252 Kalmia place, Lexington.

**John C. Benson** is in the Engineering Department of the Southeastern District of Carrier Engineering Corporation, Philadelphia. His home address is 6128 Nassau Road, Overbrook, Philadelphia, Pennsylvania.

'31

**William Trott** is teacher and coach of Bryan Station High school, Fayette county, Kentucky. His address is 250 Stone avenue, Lexington.

**Kendall B. Holmes**, son of Mrs. Sarah B. Holmes, dean of women in the summer school at the University of Kentucky, received his M.D. degree from the University of Michigan at Ann Arbor, Mich., June 17. He is one of the youngest men in the United States to receive his M. D. degree.

**Don B. Forman** is research chemist for the B. F. Goodrich Co., in Akron, Ohio.

**Henry T. Polk** is teaching assistant in the department of Agronomy, Cornell University, Ithaca, New York. He is a specialist in soils.

'32

**Dan Fowler** practices law with Fowler and Fowler, 404 Citizens Bank Building, Lexington, Kentucky. He was recently elected secretary of the Old Lewis Hunter Distillery Company, of Cynthiana. His home address is 425 West Second Street, Lexington.

**Robert C. Beemon** is teacher of mathematics in Louisville Junior High school, Louisville, Kentucky. His home is in Florence, Kentucky.

**Mary Alice Salyers** is in charge of the Carnegie Library at Somerset, Kentucky, which is connected with the Somerset High school.

'33

**Jack Hirsch** is with the Northwestern University Department of Geology at Evanston, Illinois, working toward a doctorate.

**Thomas H. Rodes** is conducting a time study with the American Rolling Mill Company of Ashland, Kentucky.

**Horace Miner** received his M. A. degree in Archaeology from the University of Chicago. He was awarded a scholarship by the University of Chicago for his outstanding work and will continue his studies at the University of Chicago in the Department of Archaeology toward the Ph. D. degree.

**James S. Frankel**, son of Mr. and Mrs. Leon K. Frankel of Lexington, received his degree in architectural engineering at the University of Michigan, June 17.

'34

**Frank J. Ecton** calls himself in a letter to Dean Melcher a "fledgeling metallurgist." He is with the American Rolling Mills Co., Ashland, Kentucky, specializing in checking qualities of sheet iron.

**Gene Lutes** is a Theatrical Accounter for the Ross Federal Service, Incorporated, 800 Keith Building, Cincinnati, Ohio.

**Harry Clo** is sales engineer for the American Air Filter Co. in Chicago. His home address is 1400 E. 53rd Street, Chicago.

J. D. Williams, '26, for the past year director of the TVA model school at Norris, Tennessee, has been appointed Director of University High school, succeeding Sherman J. Crayton.

Before going to Tennessee, Mr. Williams was principal of the Junior-Senior High school in Danville. He will take over directorship of the University High September 1.

#### BIRTHS

To Raymond Stroesser, '24, and Mrs. Stroesser, (Ann Carvill, '28) of Kew Gardens, New York, a daughter, Sara Ann. At Norton Infirmary in Louisville, Kentucky, August 3.

To Mr. and Mrs. Sherman Crayton, of Indianapolis, a daughter, Nancy Lynn. In Indianapolis, Indiana, August 6. Mr. Crayton was until this year director of the University Training School.

**Bosworth**  
ell Bosworth  
mell Wilso  
June 8.

**Conner-Y**  
Conner, '29  
'31. At Be

**Ellison-B**  
Crosby Bea  
Kentucky,

**Ewing-V**  
to George  
City, Kentu

**Foster-M**  
Foster, '35  
At Lexingt

**Gutton-I**  
Gutton, '35  
At Lexingt

**Innes-B**  
'35, to Cecil  
Ky., June 1

**Layton-I**  
'35, to Jam  
fort, Ky.,

**Mitchell**  
Mitchell,  
Barnes.

July 12.  
**Scott-D**  
to Lucien

ton, Kentu  
**Wallace**

place to H  
Indianapo

**Wiest-P**  
Wiest, '35,  
'28. At Le

**Wa**  
Walter

mus of th  
member

Committe  
while pla

nati, Ohio  
of the An  
serymen.

Mr. Hi  
late H.

Ossenbac  
Fayette c  
attended

nati, St.  
and the  
Universit

starring  
At nine

er's long  
ness wit

they bu  
serves r  
countries

widely r  
on lands  
scape a

presiden  
club, a  
Board of  
Alumni

## MARRIAGES

**Bosworth-Wilson**—Virginia Powell Bosworth, '35, to Charles Rummell Wilson. At Lexington, Ky., June 8.

**Conner-Young**—Eloise Kirtley Conner, '29, to David Wilson Young, '31. At Berry, Kentucky, July 31.

**Ellison-Bean**—Mildred Ellison to Crosby Bean, '34. At Williamsburg, Kentucky, June 14.

**Ewing-Vogel**—Louise Ewing, '35, to George Vogel, '34. At Junction City, Kentucky, July 13.

**Foster-Maxwell**—Hazel Vivian Foster, '35, to Everett L. Maxwell. At Lexington, Kentucky, June 1.

**Gutton-Palmer**—Evangeline V. Gutton, '32, to Dr. Martin Palmer. At Lexington, Kentucky, July 6.

**Innes-Bell**—Clara Elizabeth Innes, '35, to Cecil Bell, '32. At Lexington, Ky., June 22.

**Layton-Hullett**—Sue B. Layton, '35, to James E. Hullett. At Frankfort, Ky., June 22.

**Mitchell-Barnes**—Louise Harris Mitchell, '33, to Eugene Miller Barnes. At Versailles, Kentucky, July 12.

**Scott-Dickens**—Ann Maddox Scott to Lucien Dickens, '34. At Lexington, Kentucky, June 15.

**Wallace-Adams**—Susannah Wallace to Harold P. Adams, '34. At Indianapolis, Indiana, April 12.

**Wiest-Plummer**—Marjorie Sidney Wiest, '35, to Leonard Niel Plummer, '28. At Lexington, Ky., June 19.

## DEATHS

## Walter W. Hillenmeyer

Walter W. Hillenmeyer, 44, alumnus of the University and former member of the Alumni Executive Committee, died of a heart attack while playing baseball in Cincinnati, Ohio, July 15, at a convention of the American Association of Nurserymen.

Mr. Hillenmeyer, the son of the late H. F. Hillenmeyer and Mary Ossenback Hillenmeyer, was born in Fayette county August 27, 1891. He attended private schools in Cincinnati, St. Mary's College, Lebanon, and the University. While at the University he was a brilliant athlete, starring in baseball.

At nineteen he took over his father's long established nursery business with his brother Louis, and they built a business which now serves many states and foreign countries. Mr. Hillenmeyer was widely recognized as an authority on landscaping gardening and landscape architecture. He was past president of the Lexington Kiwanis club, a director of the Lexington Board of Commerce, member of the Alumni Executive Committee, and a

member of St. Pauls Catholic church.

Mr. Hillenmeyer is survived by his wife, four sons: Walter Hillenmeyer, Jr., a student in the University; Herbert F. Hillenmeyer; Henry Hillenmeyer; and Donald Hillenmeyer; four brothers: Ernest Hillenmeyer, Louis Hillenmeyer, and Raymond Hillenmeyer, all of Lexington, and Rev. Father Herbert F. Hillenmeyer of Frankfort; and one sister, Mrs. Edward P. Houlihan, of New York. Funeral services were held July 17, at St. Pauls church, Lexington, with Rev. Father Herbert Hillenmeyer acting as celebrant.

## Delos Nooe

Delos Nooe, 33, director of the department of journalism at Texas State College for Women, at Denton, Texas, was killed in an automobile accident at Denton, August 10.

Mr. Nooe held A.B. and M.A. degrees from the University, graduating in the class of '27. He was among the organizers of the Kentucky chapter of Sigma Delta Chi, international honorary men's journalistic fraternity. Formerly a member of the Lexington Herald composing room staff, he left Kentucky six years ago to accept the position at the Texas school which he held at the time of his death.

Mr. Nooe is survived by his wife, the former Miss Mary Frances Johnson of Franklin county; one daughter, Elliott B. Nooe; one son, Delos Nooe, Jr.; his father, Frank Nooe, of Cynthiana, and one brother, John Nooe, of Cincinnati. Funeral services were held in Cynthiana, where he was buried.

## Thomas Evans Earle

Thomas Evans Earle, 44, contractor for the Pennsylvania road department, was killed in an automobile accident near his home in Northeast, Pennsylvania, last December.

A native of Charleston, Kentucky, Mr. Earle graduated from the University in the class of 1912. After leaving school, he worked for the Big Four railroad at Mattoon, Illinois. From there he accepted a position with the Massillon-Greenville Gravel Company, at Massillon, Ohio. Later, he owned and operated sand and gravel pits at Northeast and did independent contracting. He entered the service of the road department in 1934.

Mr. Earle is survived by his wife, Elinor Southgate Earle; two daughters, Mary Elizabeth, a student in the University, and Elinor Southgate; and two sons, Thomas Evans, Jr., and Edward Southgate. They now live in Lexington.

While at the University, Mr. Earle

made an excellent scholarship record and was a star football player, playing his entire four years and missing only one game during that time. He was captain of the 1911 Wildcat team.

## Mrs. Margaret Baker Williams

Mrs. Margaret Baker Williams, 32 years old, wife of Dr. S. Earle Williams, died at 8 p. m. Monday, August 19 at her residence, 105 Sycamore road following a brief illness. She was the daughter of Auval Baker and Mary McLaughlin Baker.

Mrs. Williams was born and educated in Lexington, attending St. Catherine's Academy, Model High school, now known as the University Training school, and was graduated from the University of Kentucky in the class of 1926.

Besides her husband, Mrs. Williams is survived by one son, Earl Baker Williams; her parents; two aunts, Miss Marguerite McLaughlin and Miss Ann F. McLaughlin, and two uncles, John B. McLaughlin and M. J. McLaughlin, all of Lexington.

## ENGAGEMENTS

**Ligon-Harkey**—Amelia Katherine Ligon, '33, of Lexington, to J. Morton Harkey, '34. The marriage will take place at the bride's home in Lexington, Saturday, August 31.

## Enrollment Record Reached By 1935 Summer Session

(Continued from Page 6)  
the University during the second term were Paul Porter, alumnus of the University and assistant to the director of the AAA, who gave two addresses on "The Importance of the AAA"; John A. Hall, special representative of the Federal Housing Administration; and James H. Richmond, superintendent of Public Instruction.

The White Hussars, a musical company, and Mme. Slaviansky's Russian Chorus, famous singers and dancers, were the features of the second term entertainment program. Professor Carl Lampert presented a series of symphony concerts by the University Symphony orchestra each week during the term.

The annual commencement dinner for summer school graduates, guests and friends was held August 14 in the gold room of the Lafayette hotel. Dean W. D. Funkhouser, of the Graduate School, acted as toastmaster and Dr. J. T. C. Noe, professor emeritus of the College of Education, made the principal address. Music was furnished by the University salon orchestra, with Mary Louise McKenna, soprano, as soloist.

# help! HELP!

—THAT'S WHAT WE BOTH GET IF YOU FILL IN AND MAIL THE ADDRESS BLANK BELOW

- you help us by supplying the information needed to bring alumni records up to date. Files in the Alumni Office are being revised and reorganized, and should include your latest address, what you are doing, and other information.
- the new membership plan helps you to keep in touch with friends and classmates and with your University. Although alumni dues remain at only \$1 for the year 1935-36, active members will receive an issue of The Kentucky Kernel **each week** during the school year. In addition to regular football "dope," campus news, features, and so on, the alumni edition will contain a column devoted exclusively to alumni news.
- incidentally, the dollar helps us to pay for The Kernel and other material we send to help you keep up with what's going on. Be sure to mail the address blank, however, whether you send dues for active membership now or not. Thanks!

ALUMNI ASSOCIATION—UNIVERSITY OF KENTUCKY  
LEXINGTON

## Address and Information Blank

Fill in and mail to the Alumni Office, University of Kentucky, Lexington

\_\_\_\_\_ Name \_\_\_\_\_

(If married woman give both married and single names).

\_\_\_\_\_ Class \_\_\_\_\_ Degree \_\_\_\_\_

Business Address \_\_\_\_\_

Residence Address (Please indicate by X which you want used) \_\_\_\_\_

Occupation and further information (A letter giving details will be appreciated)

() Check here if you are sending \$1 alumni dues for the year 1935-1936. The first issue of The Kernel will be published about September 20; you won't want to miss a single issue, so mail this at once.

K

Volume V

Men

Once ev  
uation, al  
have an o  
union with  
of their ow  
grads kno  
come to r  
renew acq  
of the staf  
special oc  
the privile  
a large nu  
women wh  
cause the  
ten, or per  
years ago.

While o  
are still t  
not too so  
important  
uled to ass  
ending in  
with the c  
cial reunio  
second ann

There a  
place on t  
prove inter  
not had a  
close cont  
during the  
some insta  
are disap  
changes a  
progress  
pleased to  
elsewhere  
lines some  
tions takin  
rent Unive

Comm

Speakers  
of comme  
been ann  
calendar I  
program,  
ranged th  
take place

Official  
ington. Subs  
scription to  
Entere