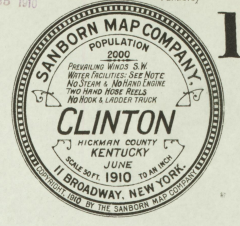
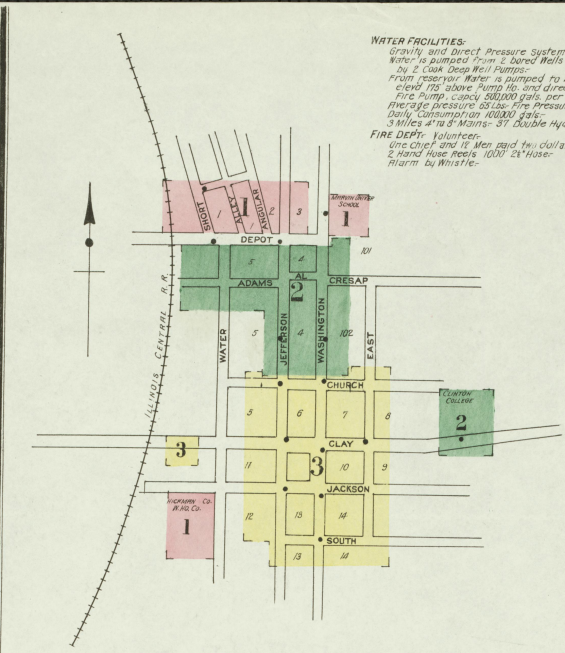
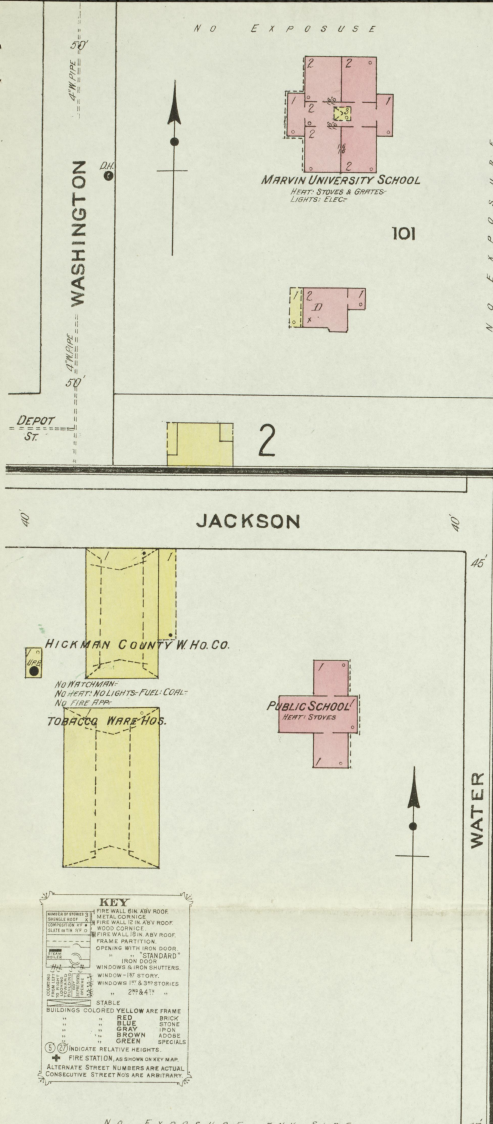


JUL 25 1910

© G.F. 18317 2673 4 SHEETS

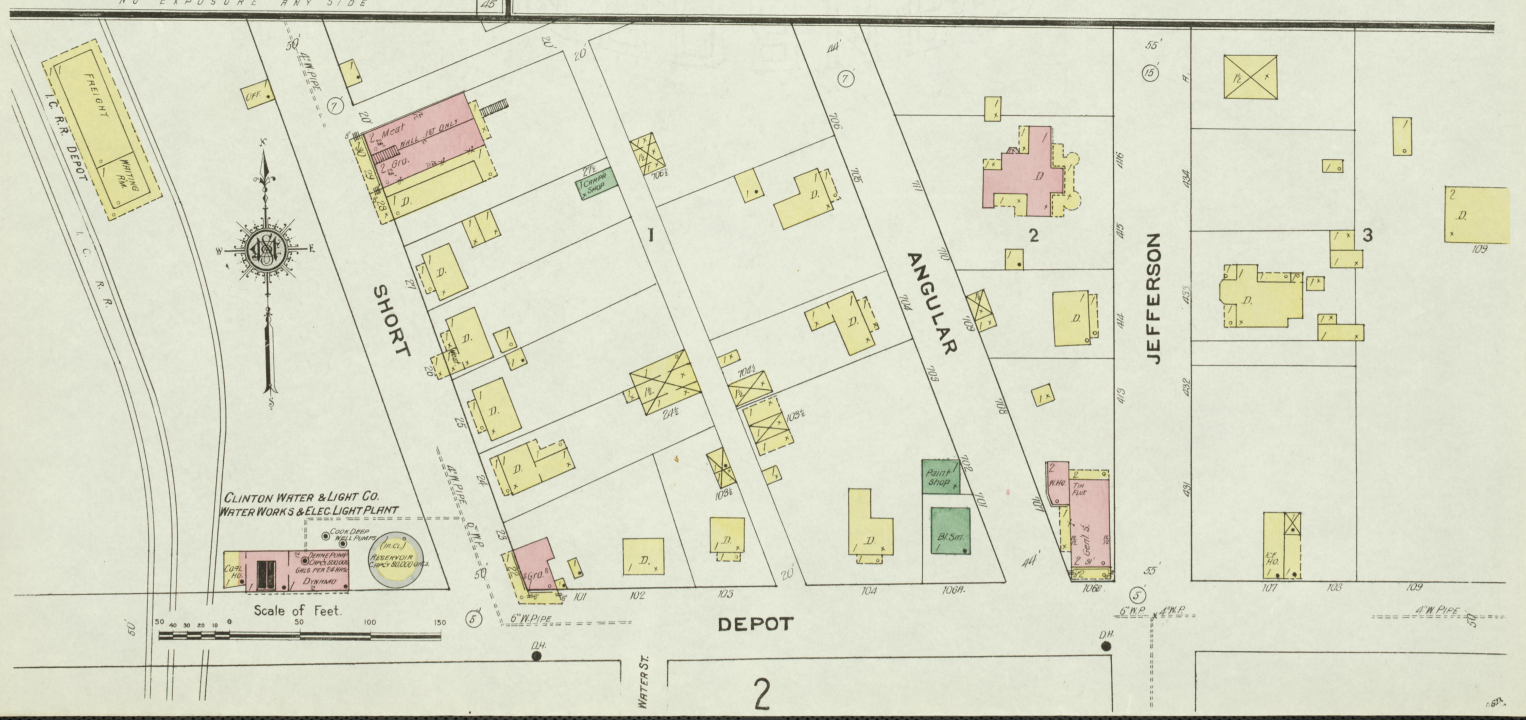


WATER FACILITIES: Gravity and Direct Pressure System of Water Works. Water is pumped from 2 bored wells into 60,000 gal. reservoir, by 2 Cook Ogee Well Pumps. From reservoir water is pumped to 40,000 gal. stand pipe, 15' above pumps, and direct into mains by 10" pipe. Fire Pump, capacity 800,000 gals. per 24 hrs. Fire hydrant pressure 65 lbs. Fire pressure 125 lbs. Daily Consumption 40,000 gals. Fire Dept. 1 volunteer. One Chief and 18 Men paid the dollars (\$2.00) for each alarm. 2 Hand Hose reels 1000' 2 1/2" hose. Alarm by whistle.



INDEX.

Table listing special buildings and their locations, including African Methodist Episcopal Church, Baptist Church, Christian Church, Clinton College, Commercial Hotel, Fire Department, etc.

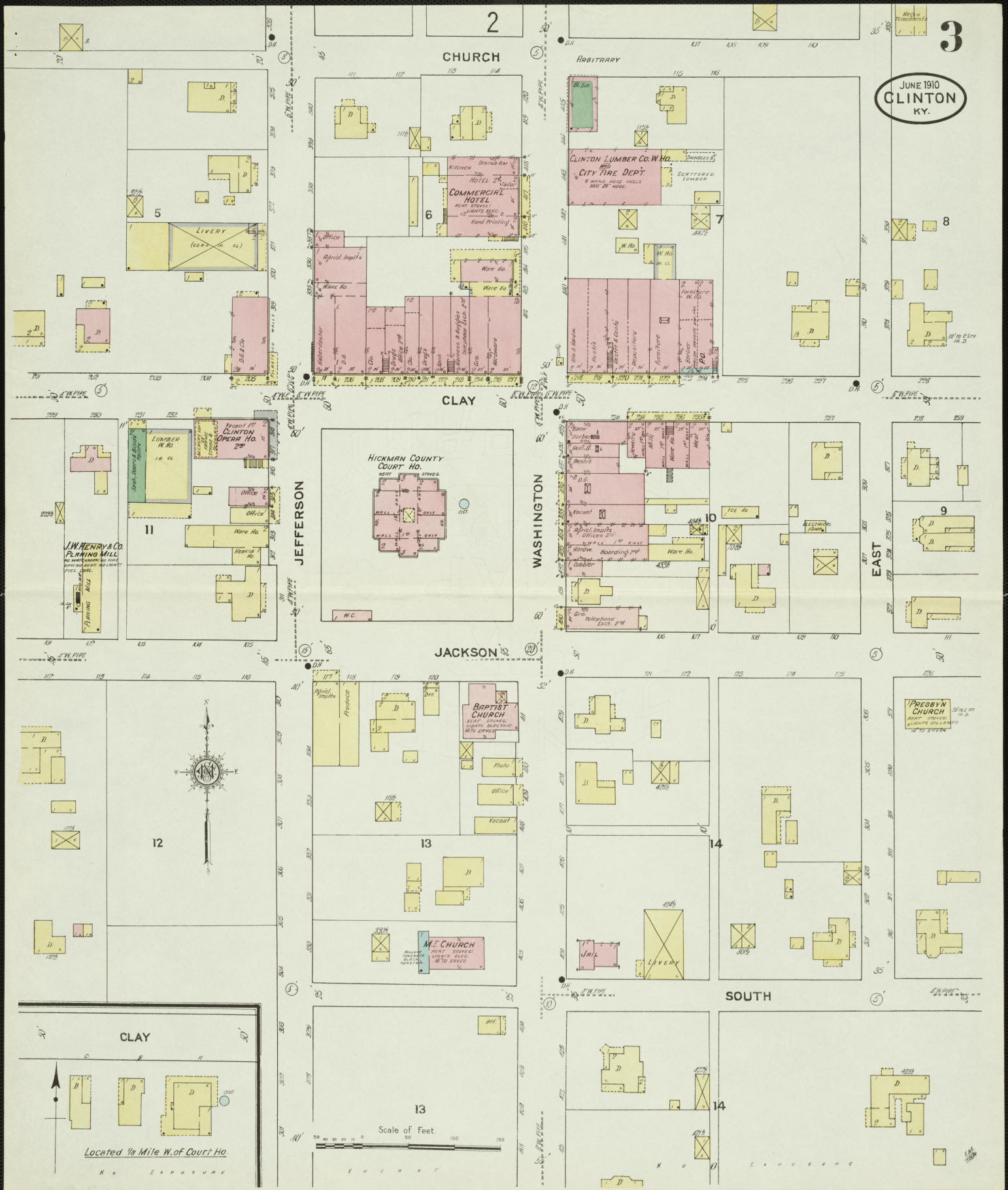








JUNE 1910  
CLINTON  
KY.



CHURCH

ARBITRARY

CLAY

JACKSON

JEFFERSON

WASHINGTON

EAST

SOUTH

CLAY

13

Scale of Feet.

Located 1/4 Mile W. of Court Ho.

N O EXPOSURE

N O EXPOSURE