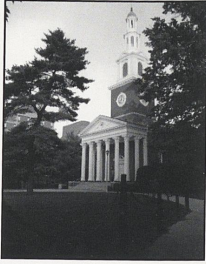


History

- Founded in 1865 as a land-grant institution.
- Located in the heart of the beautiful Kentucky Bluegrass region on a 764-acre campus just south of downtown Lexington.
- 14 community colleges are a part of the University.
- The University also has a large medical center in Lexington with a 472-bed hospital.
- Policy is set by a 20-member Board of Trustees which includes alumni, faculty and student representation.
- Charles T. Wethington Jr. is the tenth president of the University.

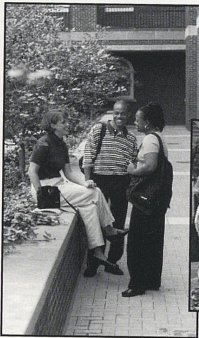


Memorial Hall

Tuition & Fees

Tuition and fees on the Lexington Campus for the 1997-98 academic year:

- Undergraduate state residents: \$2,400 per year in tuition; \$336 in fees.
- Undergraduate non-residents: \$7,200 per year in tuition; \$336 in fees.



We're Proud Of...

- Ranked in *America's 100 Best College Buys*.
- Record fundraising, with more than \$41 million contributed by 44,000 alumni and other friends.
- The Cooperative Extension Service makes more than 5 million contacts each year through its 120 offices.
- The Singletary Center for the Arts attracts 108,000 people to more than 360 events.
- The men's basketball team, six-time NCAA champions, was champion in 1996 and runner-up in 1997.



President Wethington talks with UK students.

Key Telephone Listings

Lexington Campus	257-9000
Chandler Medical Center	323-5000
Community College System	257-8607
Undergraduate Admissions	257-2000
Graduate Admissions	257-4613
Public Relations	257-3303
Registrar	257-3161
Visitor Center	257-3595

UK INFOLINE 606-257-5684

Provides daily updates on sport, fine arts and other events on the campus in Lexington.

UK FACTS

'97-'98

UNIVERSITY OF KENTUCKY

William T. Young Library

The new William T. Young Library on the Lexington Campus opens this year. This architectural initiative is the finest library resource in the state and includes:

- Seating for 4,000 patrons
- Space for 1.2 million volumes
- 3,000 computer network ports
- 600 personal computers available for users
- 351,000 square feet of space

The UK library system now ranks 47th among all research libraries in the nation, according to American Research Libraries.

Academic Programs

In the 16 academic colleges students have 84 majors from which to choose.

- Agriculture
- Architecture
- Arts and Sciences
- Business and Economics
- Communications and Information Studies
- Education
- Engineering
- Fine Arts
- Human Environmental Sciences
- Law
- Social Work
- Allied Health Professions
- Dentistry
- Medicine
- Nursing
- Pharmacy



William T. Young Library

Research

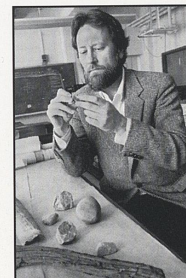
- Rated 45th among all public research universities in the nation and 66th among all colleges and universities, with faculty and staff attracting more than \$125 million in research grants, contracts and gifts.
- One of just 59 Research Universities of the First Class as listed by the Carnegie Foundation with particular strengths in engineering, business, aging, pharmacy and cancer research.
- A team of scientists, headed by anthropologist Tom Dillehay, discovered at Monte Verde, Chile human habitation in the Americas some 1,300 years earlier than previously believed.
- Prestigious Guggenheim Fellows were awarded George Herring and Thomas Cogswell in the History Department--one of only two departments at any university in the country with two Fellows.
- Royalties from inventions bring in over \$2.4 million a year, ranking the university in the top 40.

Students

- Enrollment at UK in Lexington is more than 24,000, with another 41,500 enrolled in the 14 community colleges.
- 3,100 students are enrolled in the five colleges in the Chandler Medical Center.
- UK educates 39% of all students going to public and private colleges and universities in the state.
- 5,200 students live on campus in 18 residence halls or apartment complexes.
- 250 organizations offer students a wide variety of interests to choose from.
- Another excellent freshman class: 56 National Merit Scholars, 126 Kentucky Governor's Scholars and 125 high school valedictorians.

Graduate Education

- More than 5,000 graduate students are enrolled in 94 master's degree and 60 doctoral programs.
- The first joint degree program in the state is being offered as UK and the University of Louisville begin a joint doctoral degree program in social work.



Tom Dillehay

Faculty

- 1,831 full-time in Lexington.
- 1,145 in the Community College System.
- 97% of the faculty in Lexington have the highest degree attainable in their fields.