

1886

ALEXINGTON

KENTUCKY

PUBLISHED BY THE
Sanborn Map Publishing Co
 LIMITED
 117 BROADWAY, NEW YORK

13053 R1

SCALE 50 FT TO AN INCH
MAY 1886

INDEX.

STREETS.

A	Ayres Alley, 10	B	Ballard, 7	J	Jefferson, 1-60 7	Pine, W.	1-25 9	R	Rose, 1-30 15	Water, E.	1-78 9	W	Walnut, 1-28 10
C	Cedar, E., 1-30 3	L	Lawrence, 3	M	Magowan, 1-30 15	W. E.	79-185 10	S	Second, E., 1-65 14	G	Gazette Printing, 9	P	Patrick, W. Livery, 9
D	Daly Place, 6	M	Main, E., 1-80 9	N	New, 14	H	Henry, 1-20 8	S	St. Paul's Catholic Church, 13	G	Gormley, C., Carriage Factory, 17	P	Pepper Distillery, 21
E	Edwards Place, 14	W	Washington, 1-24 8	O	Orphan Home, O	W	Woolen Mills, 21	S	St. Paul's Catholic Church, 13	G	Gazette Printing, 9	P	Pepper Distillery, 21
F	Fourth, W., 270-325 17	W	West, 1-20 8	P	Planters, 27-123 8	W	Woolen Mills, 21	S	St. Paul's Catholic Church, 13	G	Gazette Printing, 9	P	Pepper Distillery, 21
G	Georgetown St., 7	H	High, E., 1-75 9	P	Pine, W., 1-25 9	W	Woolen Mills, 21	S	St. Paul's Catholic Church, 13	G	Gazette Printing, 9	P	Pepper Distillery, 21
H	Hendon Place, 5	I	High, E., 1-75 9	P	Pine, W., 1-25 9	W	Woolen Mills, 21	S	St. Paul's Catholic Church, 13	G	Gazette Printing, 9	P	Pepper Distillery, 21

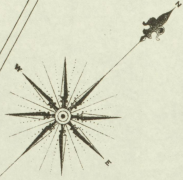
SPECIALS.

A	Adams, G. W., Spice Mills, 8	K	Kentucky Agric. & Mech. Assoc. Grounds, 20
B	Bankart, M., Bottling Works, 14	L	Lee's Beer Hall, 5
C	Carroll, P., Bluegrass Seed, 8	M	McChesney & Martin, Grain Warehouse, 8
D	Derby & Day, Bonded Warehouse, 18	N	Nelson, H. B. & Bro., Hemp & Seed W. H., 15
E	Episcopal Church, 15	O	Orphan Home, O

* Indicates only one side of Street shown.

Map 13053 R1
 Library of Congress

1st WARD.



TIPTON

MERINO

31 POPLAR

LOWER

1st WARD.

30 DUNAWAY

SPRING

29

S. BROADWAY

MAY 1886
LEXINGTON
KY.

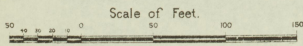
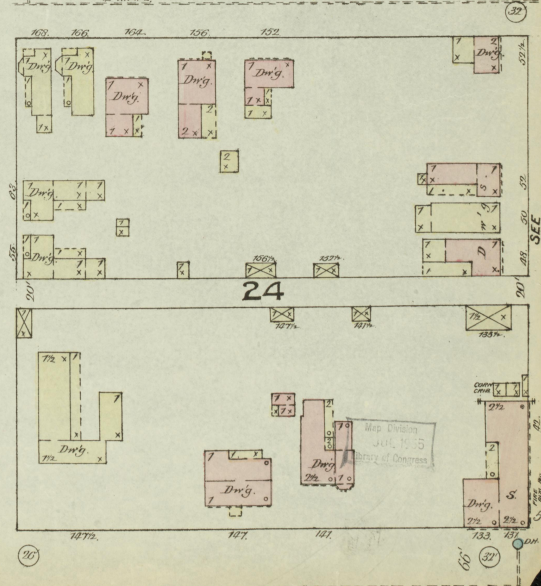
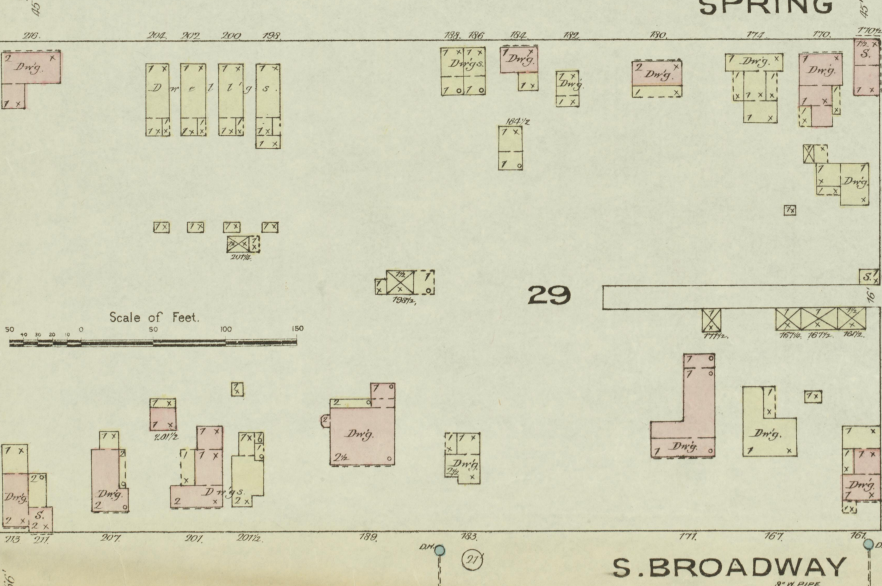
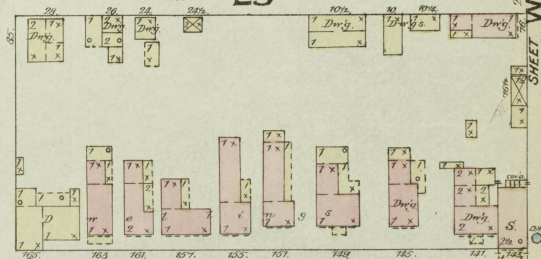
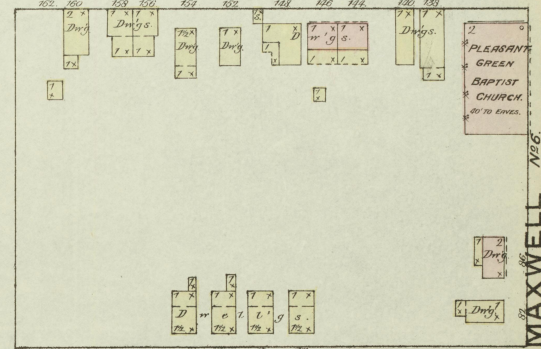
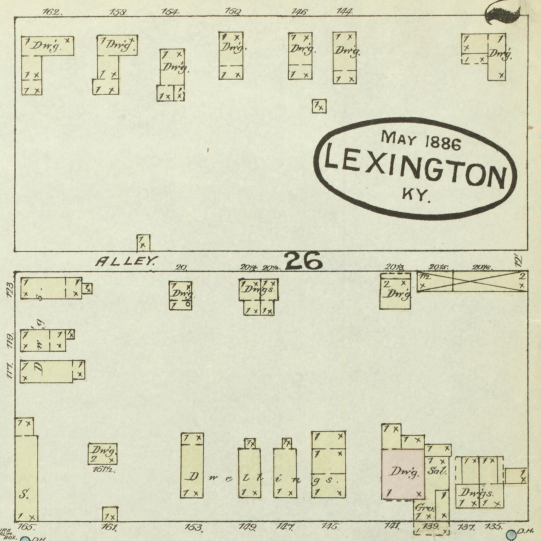
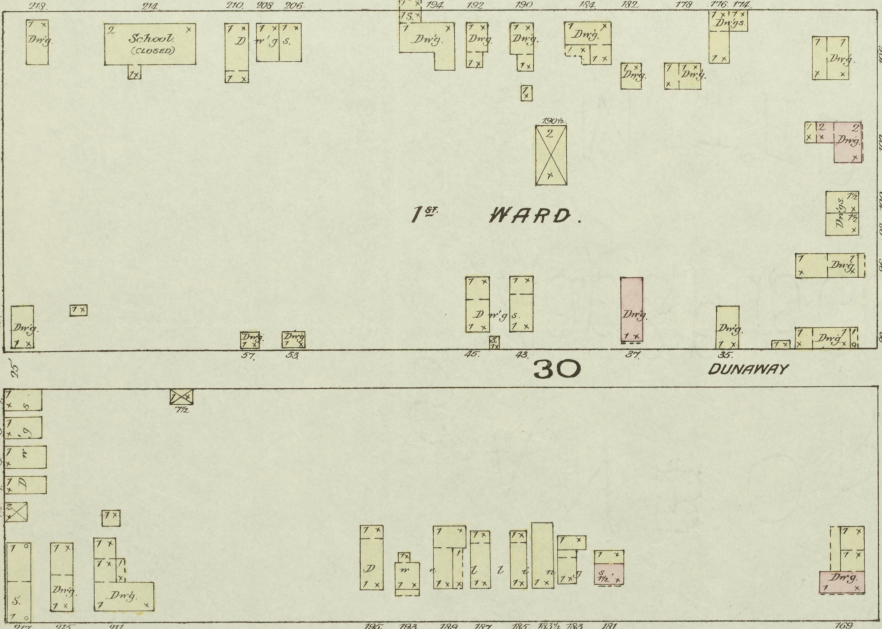
ALLEY 26

ALLEY 25

24

PLEASANT
GREEN
BAPTIST
CHURCH

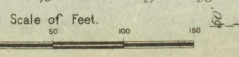
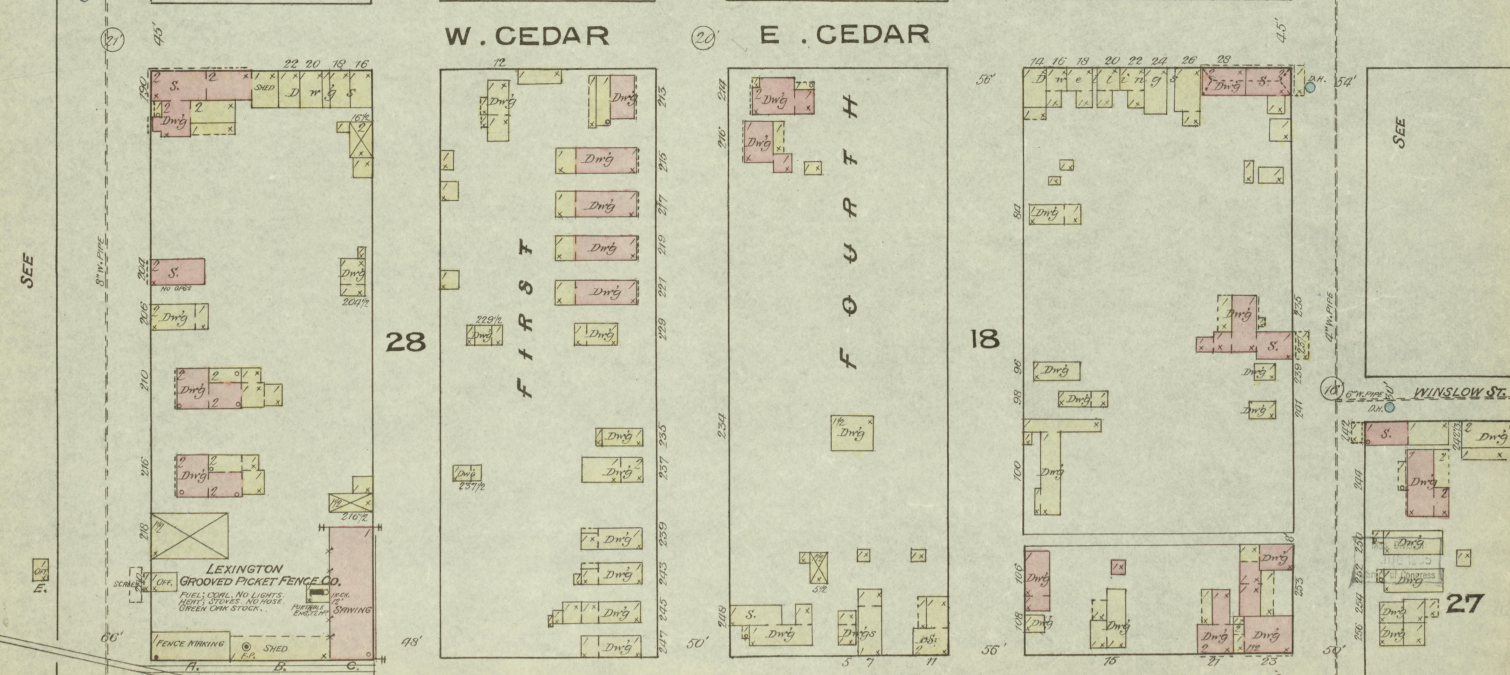
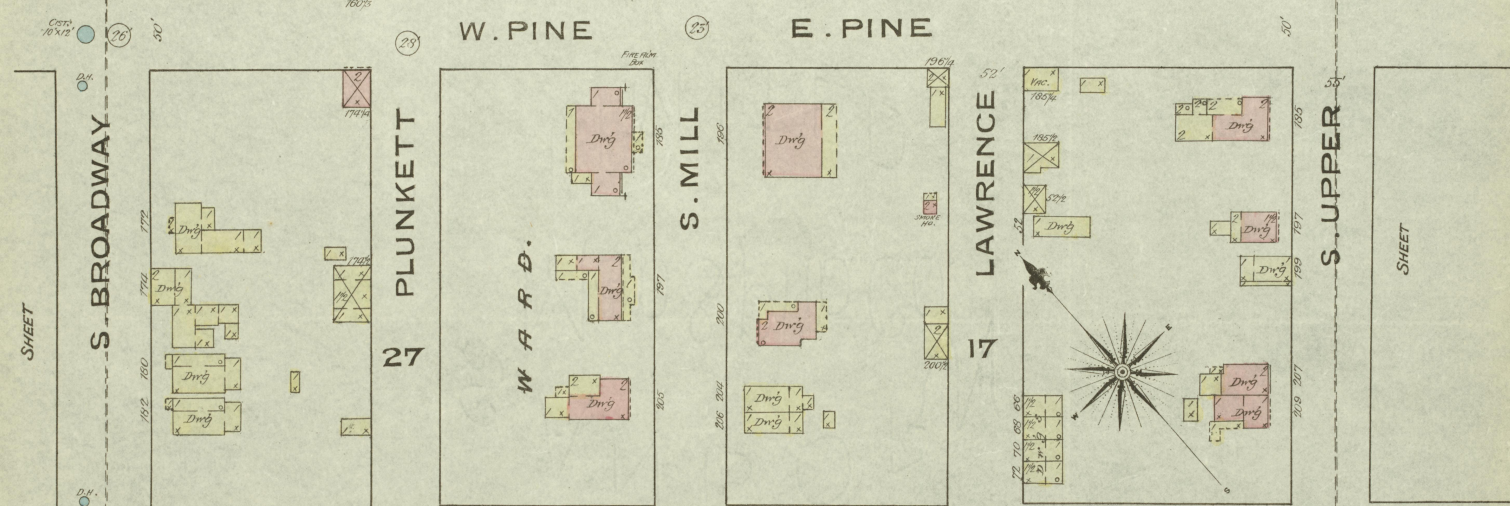
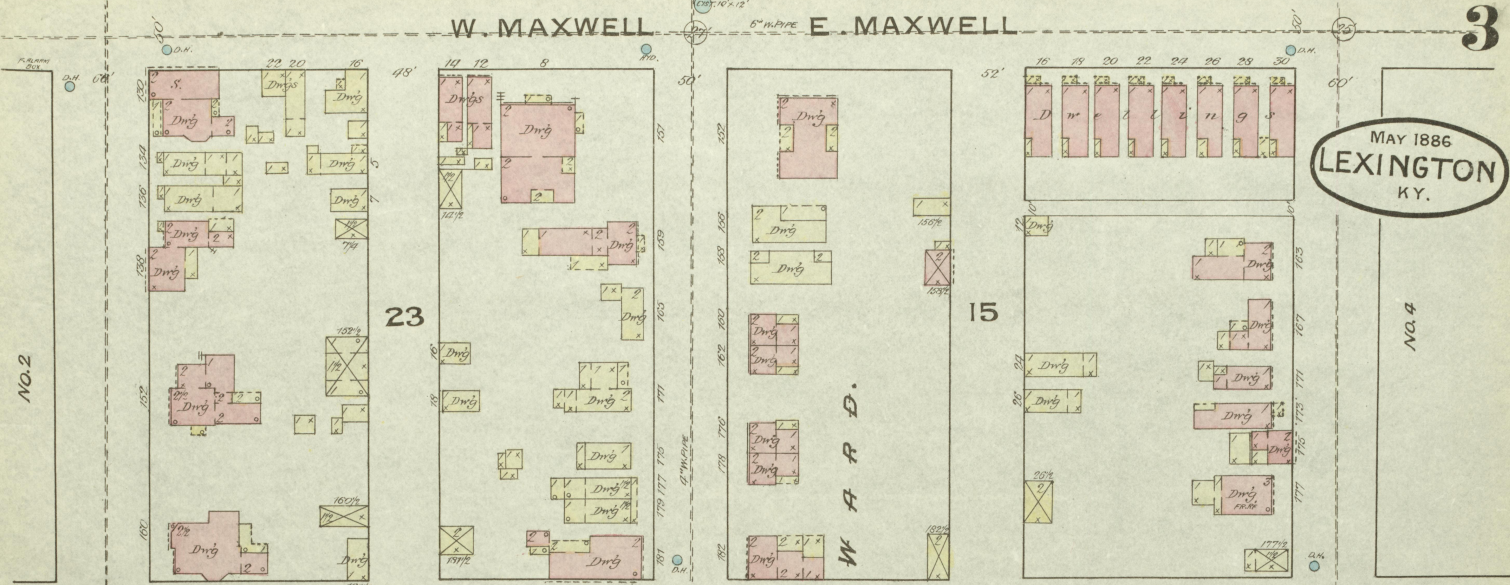
SHEET W. MAXWELL 1886



No 3.

MAY 1886
LEXINGTON
KY.

3



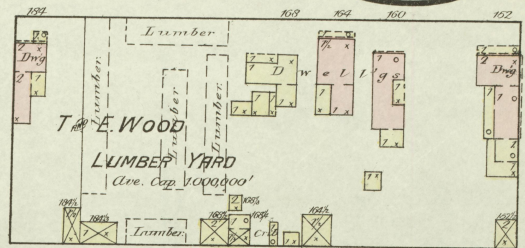
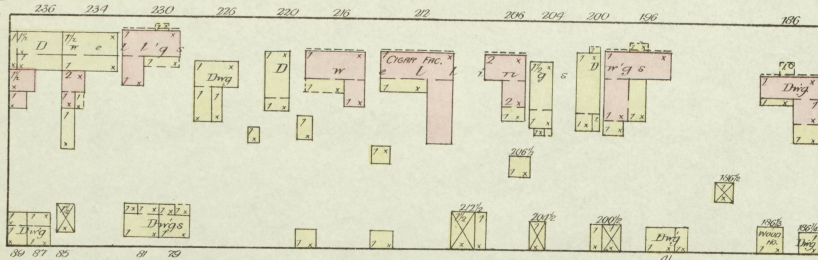
S. UPPER

No. 3

SEE SHEET No. 4

SEE SHEET No. 3

SEE SHEET No. 5



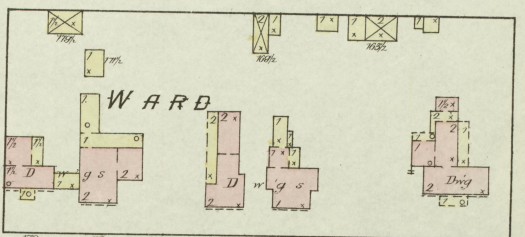
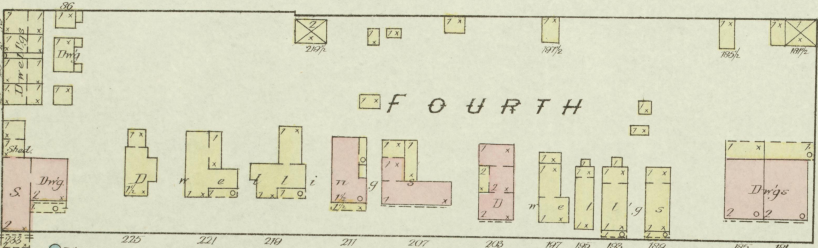
19 VERTNER

16

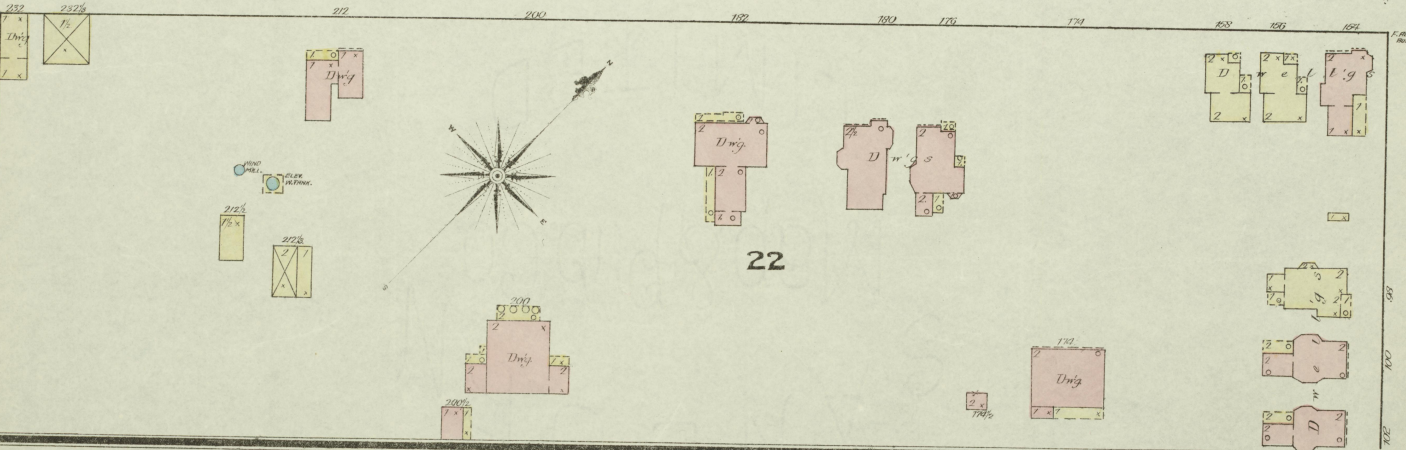
E. PINE

E. MAXWELL

WINSLOW

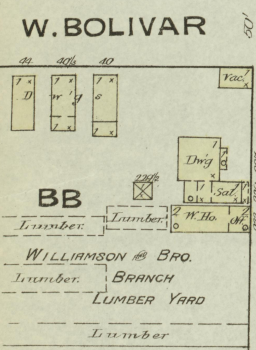


S. MULBERRY



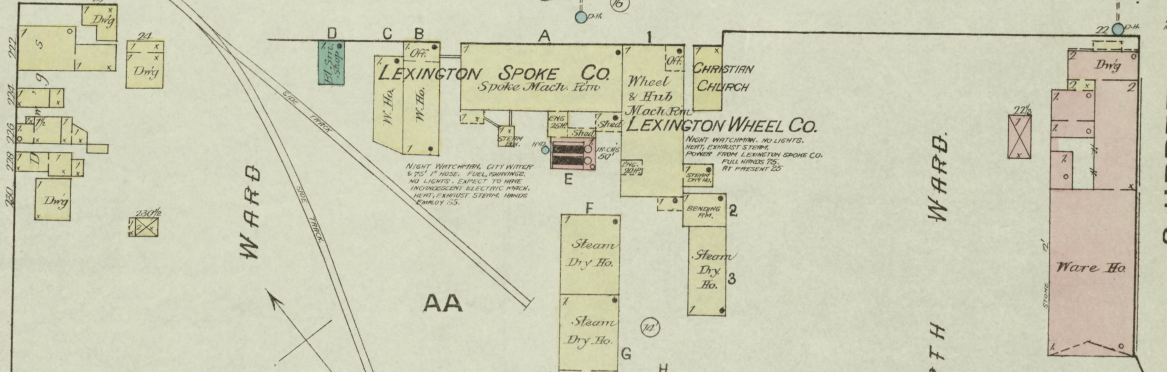
22

SEE SHEET No. 2. SEE FLUNKET ST. 46' SEE S. MILL ST. 50' SEE LAWRENCE ST. 50' No. 3



S. BROADWAY

W. BOLIVAR E. BOLIVAR



FIRST WARD

FOURTH WARD

S. UPPER

Scale of Feet. 50 100 150

Map Edition JUL 1 1885 Library of Congress

W. MAXWELL

W. HIGH No. 9.

MAY 1886
LEXINGTON
KY.

1ST WARD
18

S. MILL

SEE SHEET No. 3.

E. MAXWELL

E. HIGH SHEET

CITY SCHOOL No. 1.

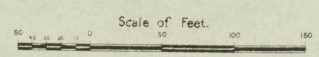
HERNDON PLACE 10

M. E. CHURCH
28 TO 34 EYES

S. UPPER

SEE SHEET No. 4.

11



Map Drawn
JUL 1885
Library of Congress

S. MULBERRY

SEE SHEET

MERINO

SEE SHEET No 15.

6

MAY 1886
LEXINGTON
KY.

15

VERSAILLES PIKE

No 2.

21

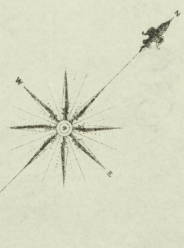
S. LOWER

W. MAXWELL

W. HIGH

20

1st WARD.



S. SPRING

Scale of Feet

BROWN

19

S. BROADWAY

See Catalogue
Library of Congress

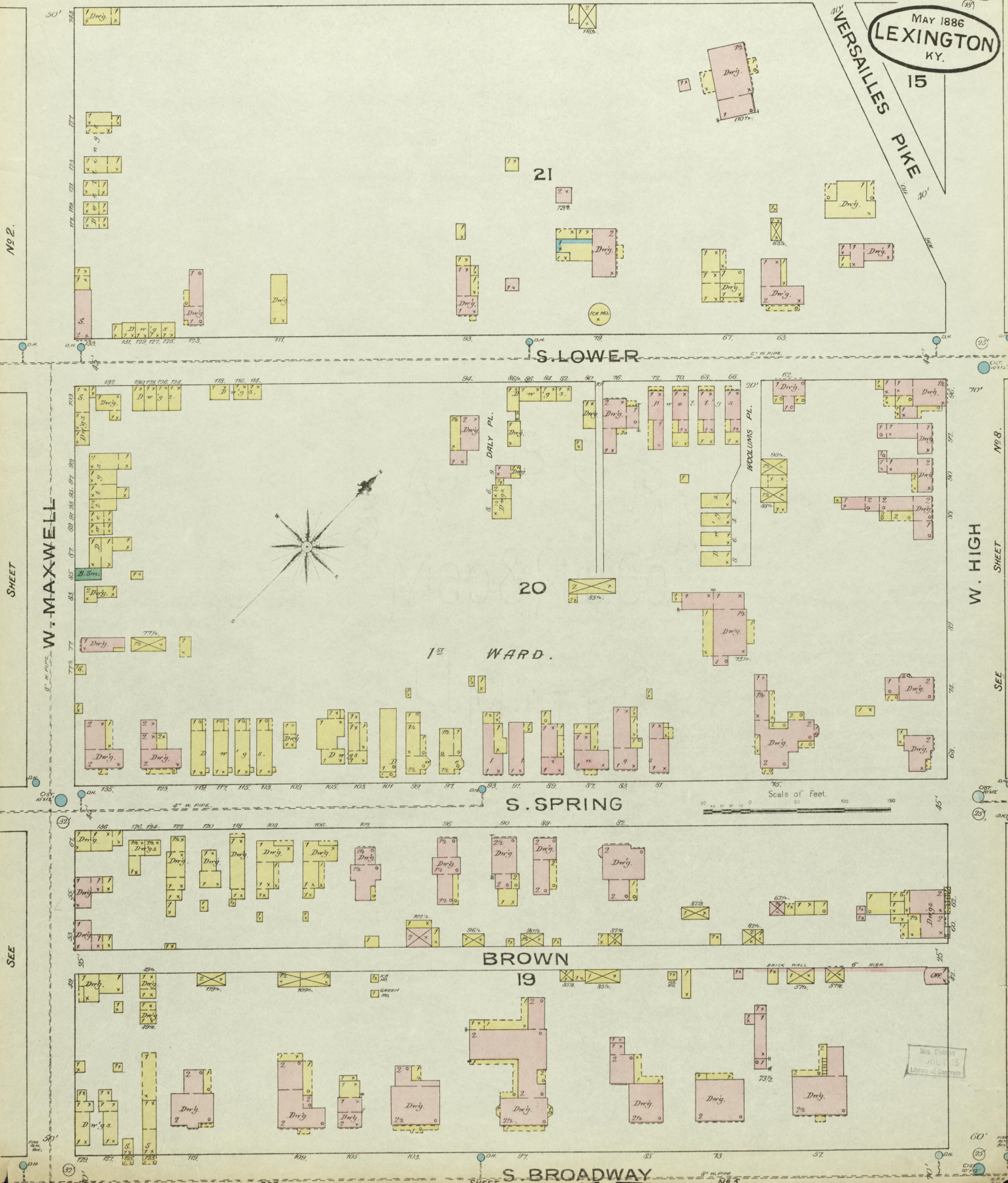
SEE

SEE

SHEET

No 3.

60'

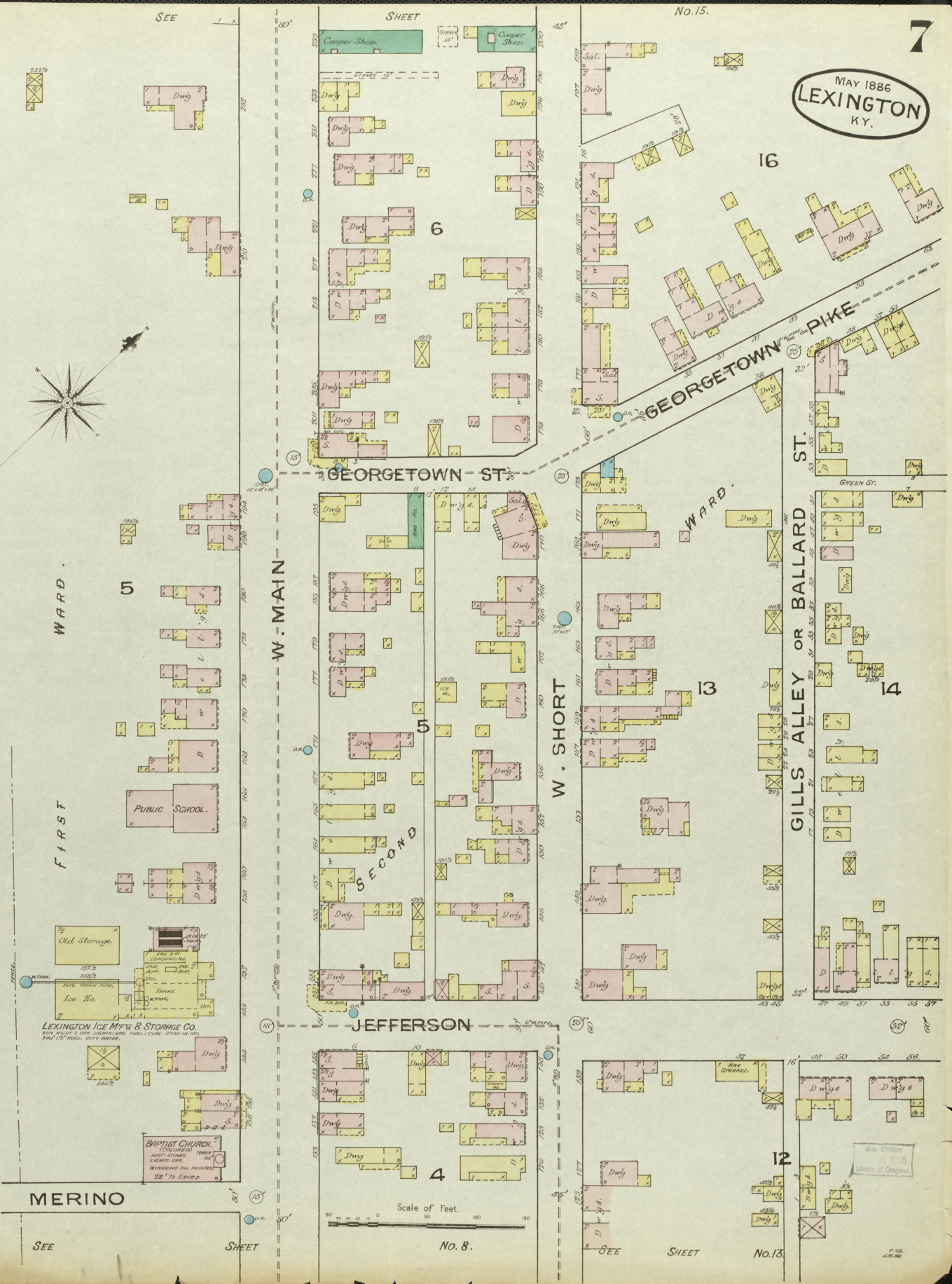


MAY 1886
LEXINGTON
KY.

No. 15.

SEE

SHEET



WARD

FIRST

5

5

5

5

5

5

5

5

5

5

5

W. MAIN

GEORGETOWN ST.

JEFFERSON

W. SHORT

WARD

GILLS ALLEY OR BALLARD ST.

SECOND

4

13

14

12

MERINO

SEE

SHEET

Scale of Feet

No. 8.

SEE

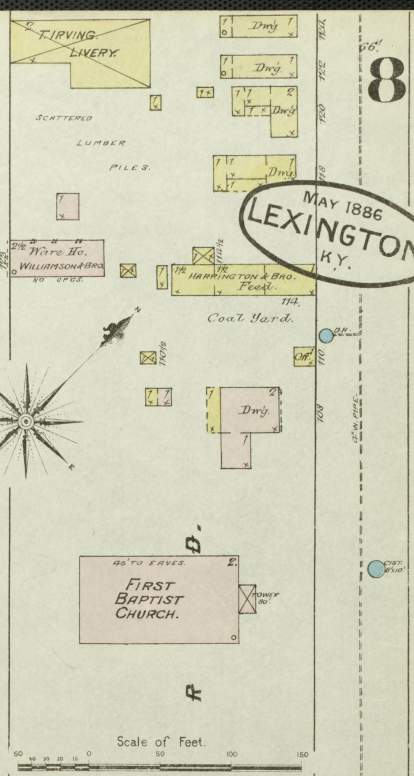
SHEET

No. 13.

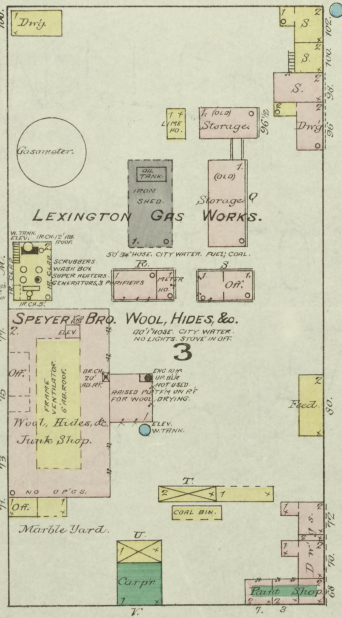
F. H. G. 1886.

MAY 1886 LEXINGTON KY.

SEE SHEET No. 7 MERINO

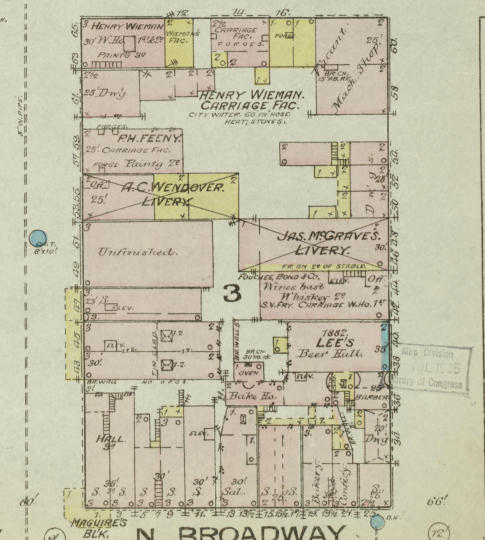
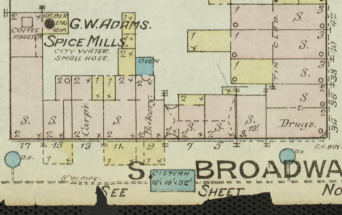
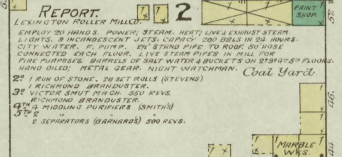
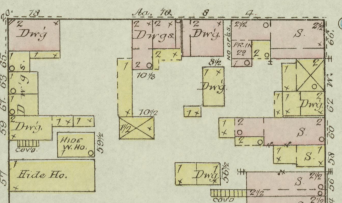


LOWER

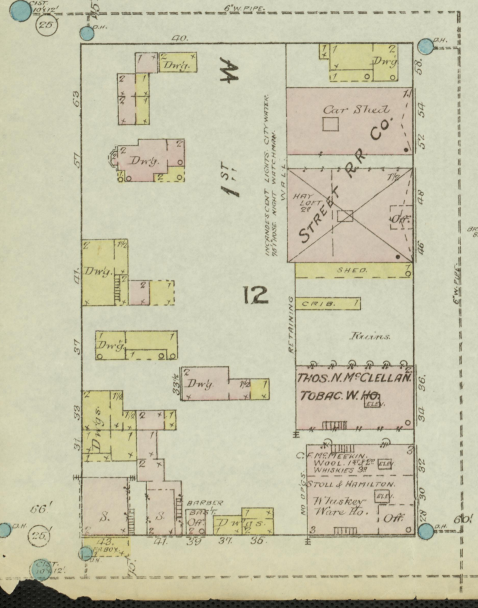
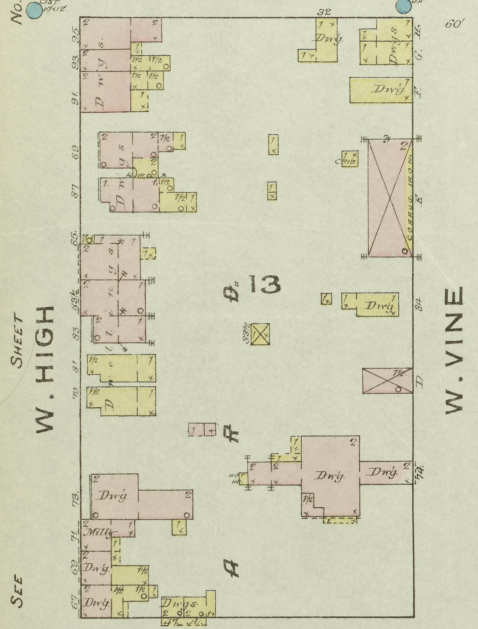
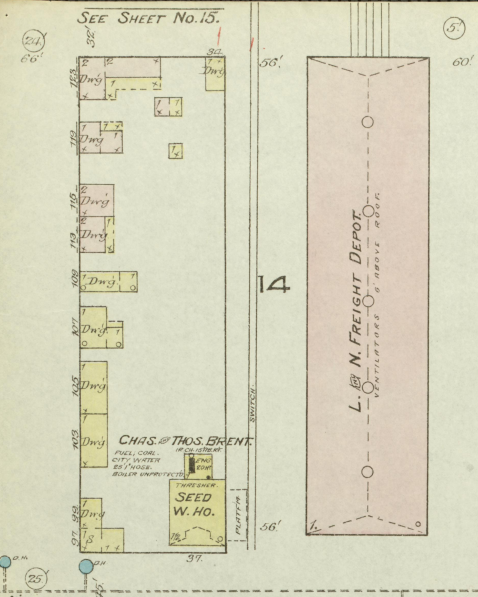


W. MAIN

S. SPRING N. SPRING



N. BROADWAY



SEE SHEET No. 15

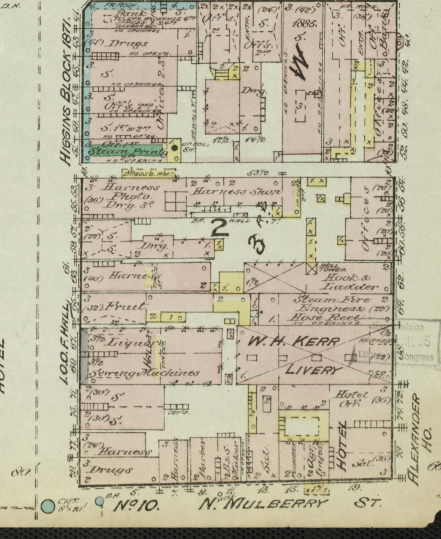
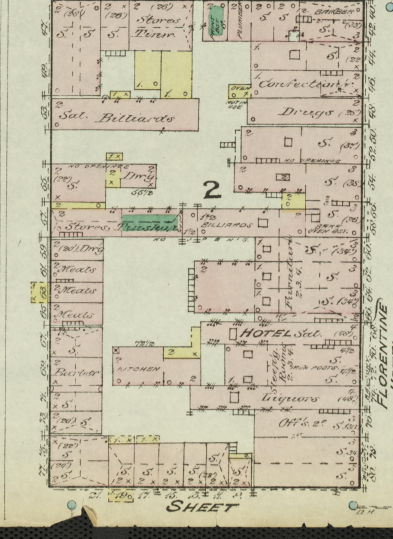
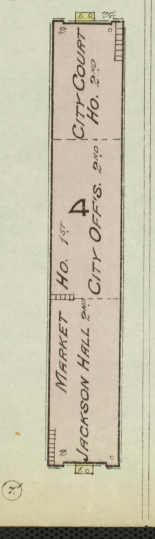
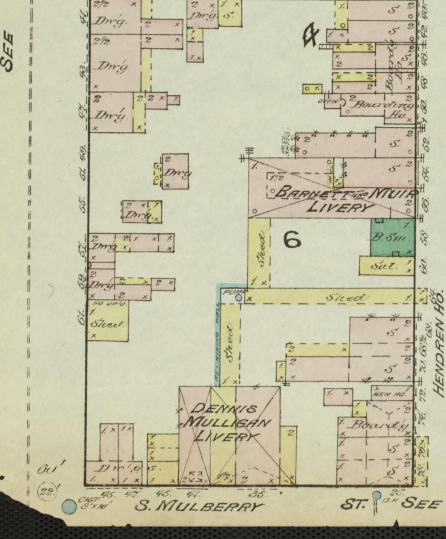
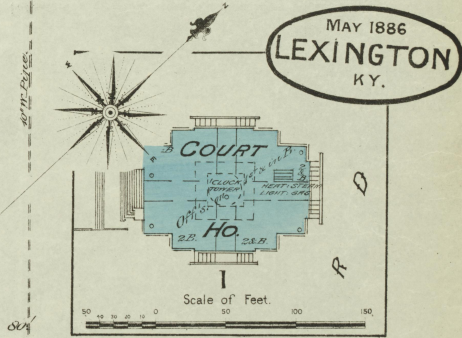
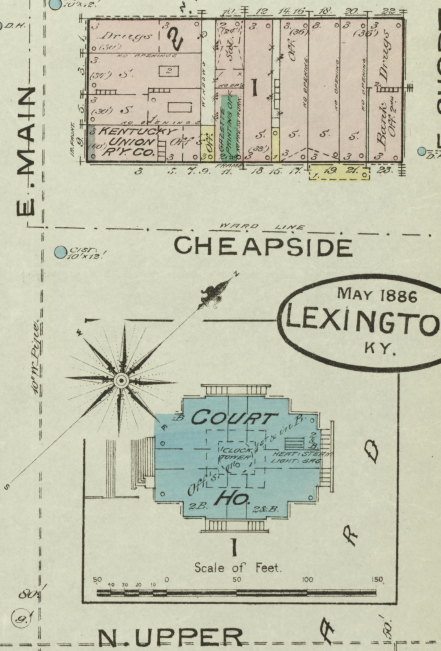
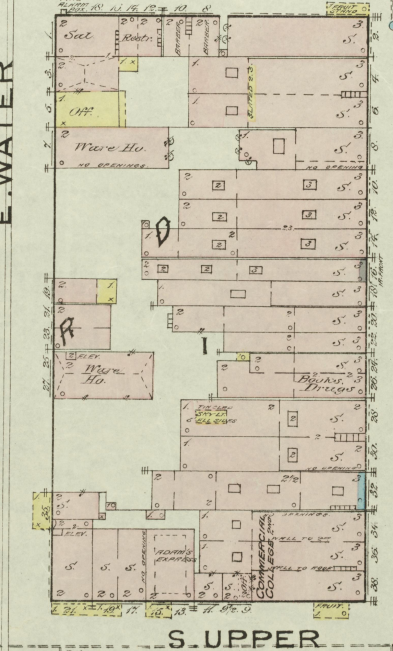
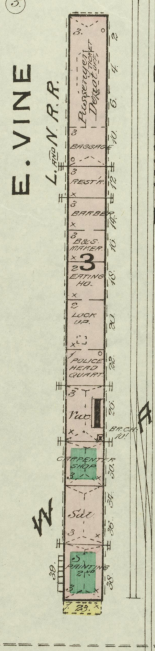
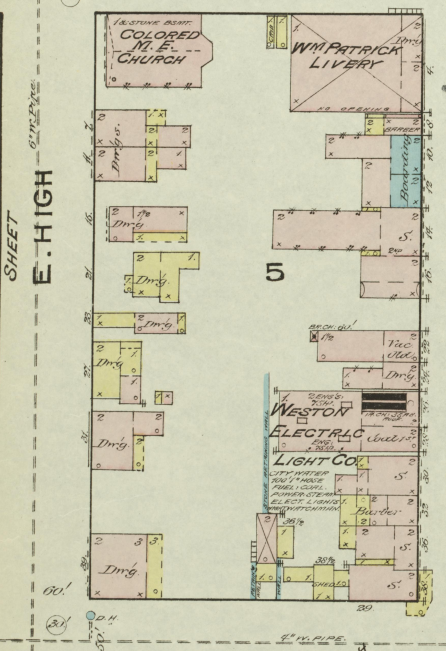
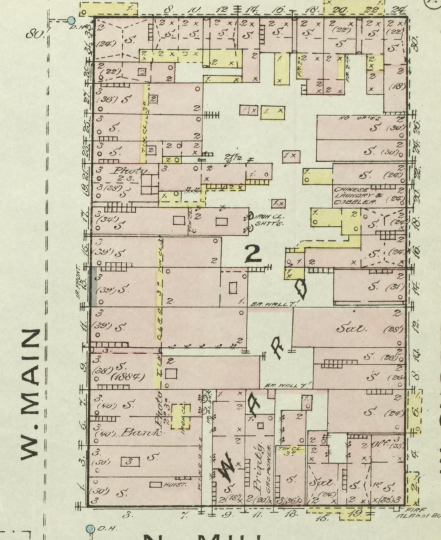
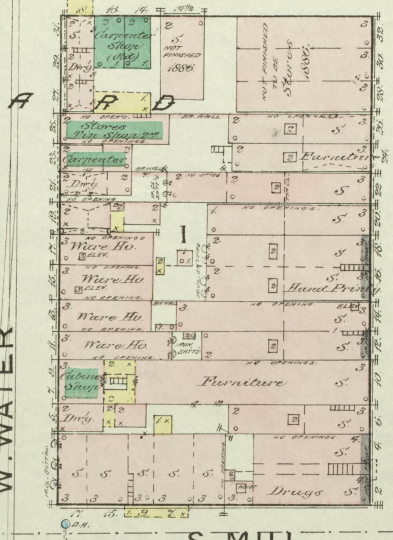
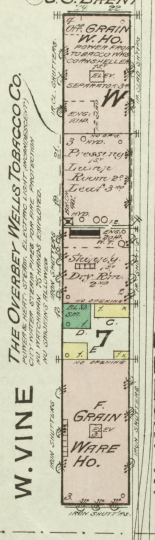
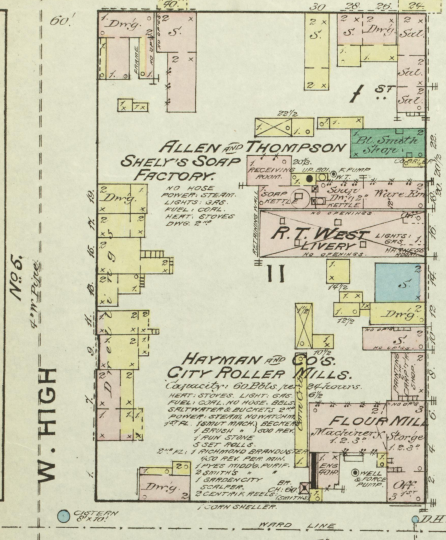
SEE SHEET No. 6

SEE SHEET No. 9 S. BROADWAY

SEE SHEET No. 13

S. BROADWAY

N. BROADWAY



S. MULBERRY

N. MULBERRY ST.

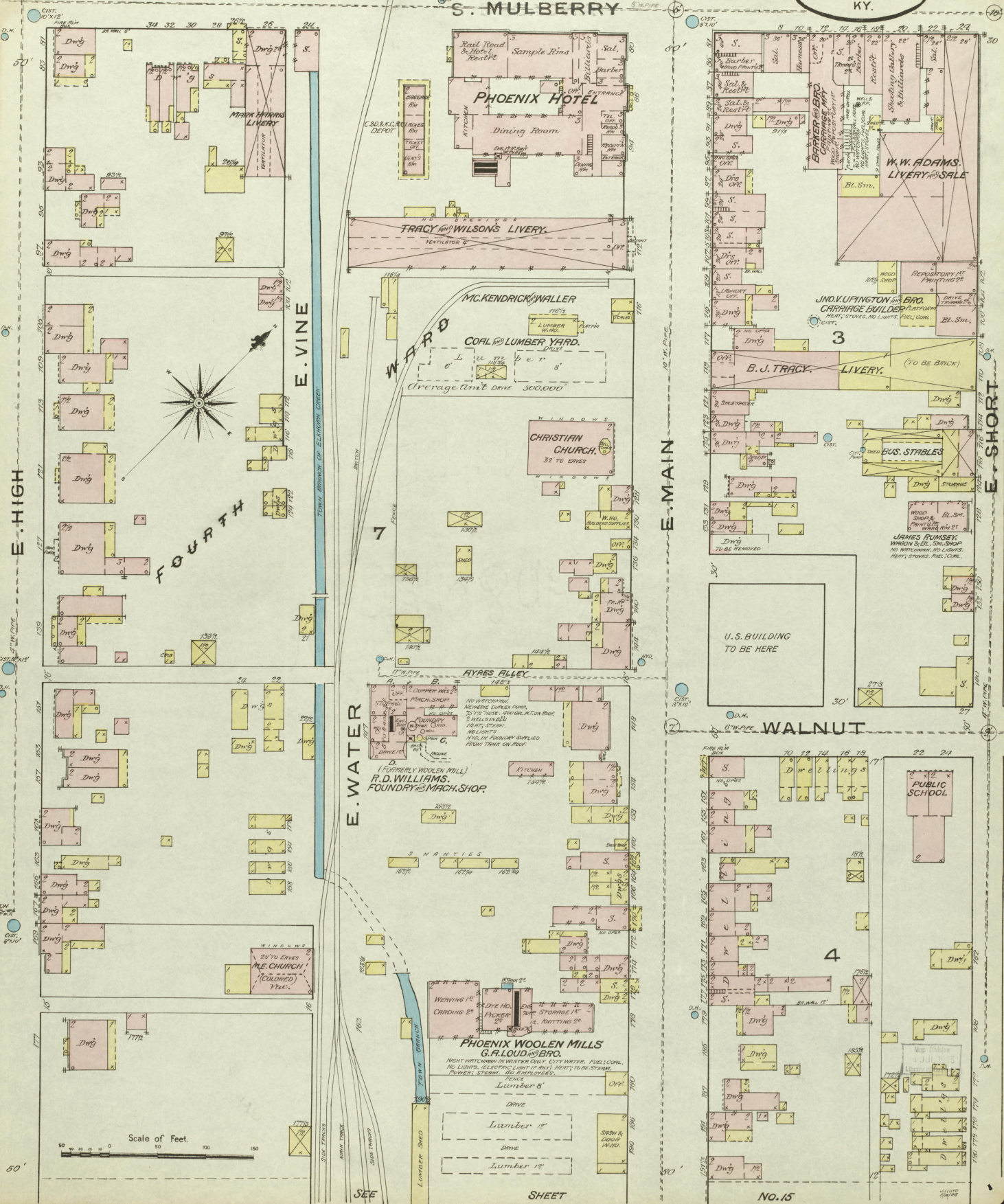
SEE

SHEET

NO. 9

MAY 1886
LEXINGTON
KY.

10



NO. 11

E. SHORT

SHEET

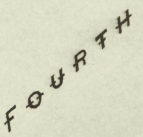
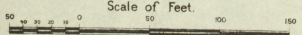
SEE

NO. 15

SHEET

SEE

Scale of Feet.

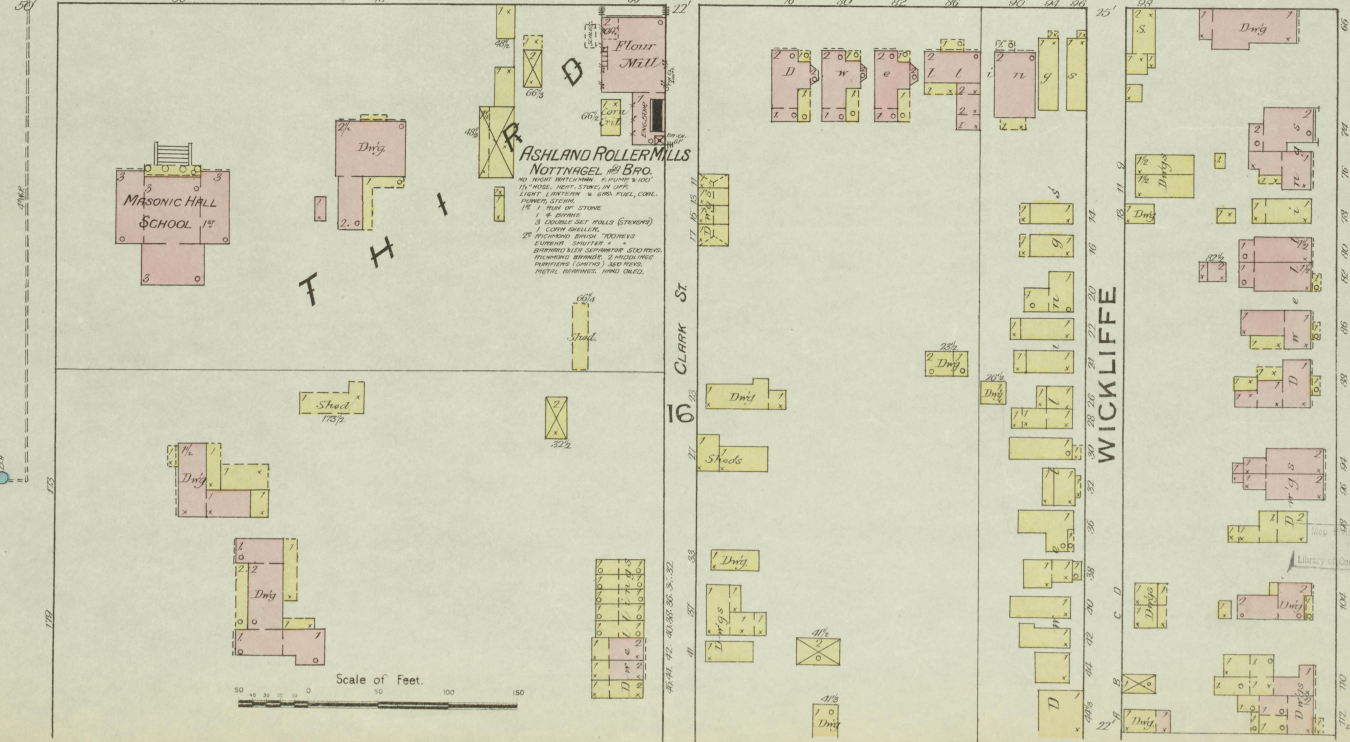
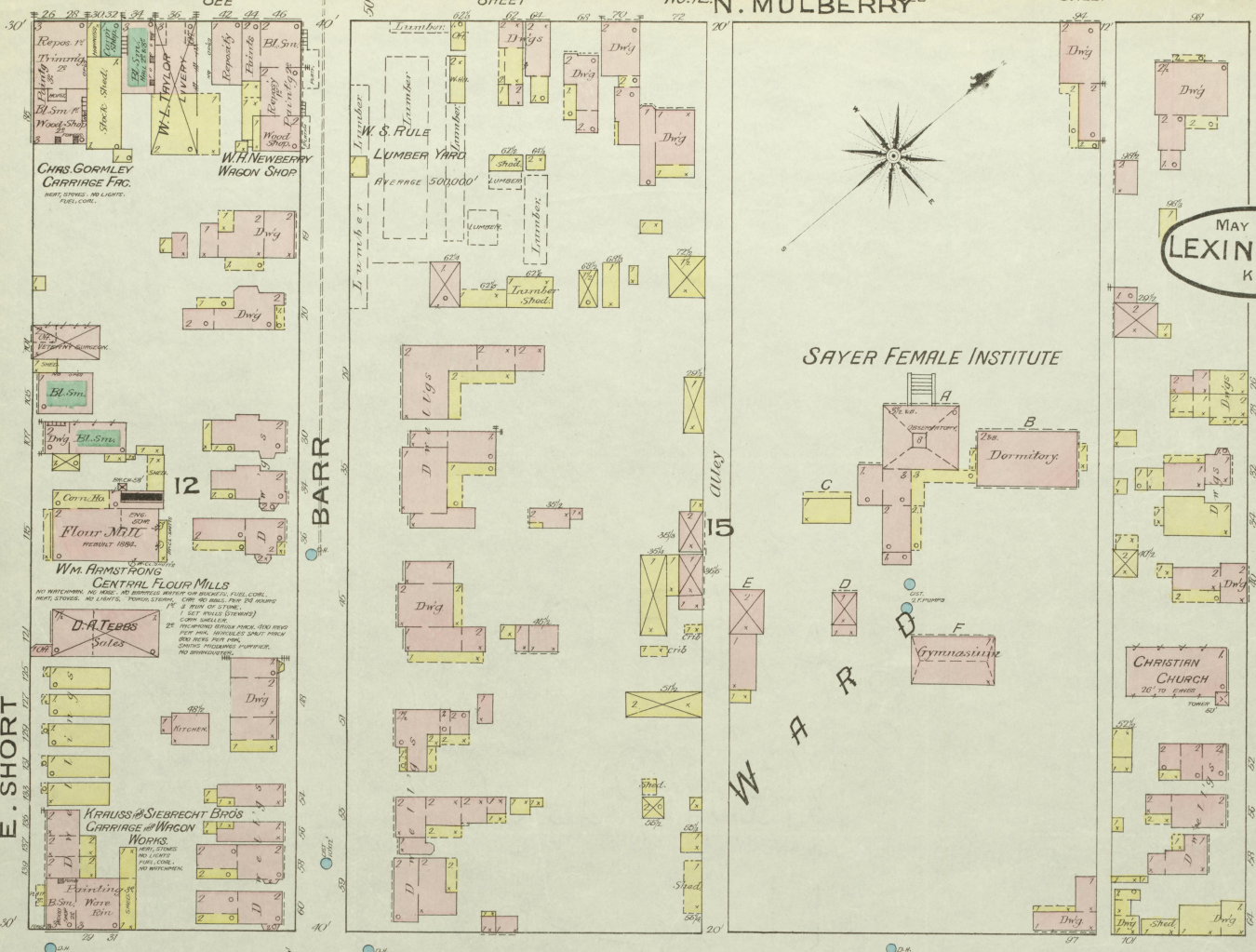


No. 10

E. SHORT SHEET

11

MAY 1886 LEXINGTON KY.



Scale of Feet.



CONSTITUTION

SEE

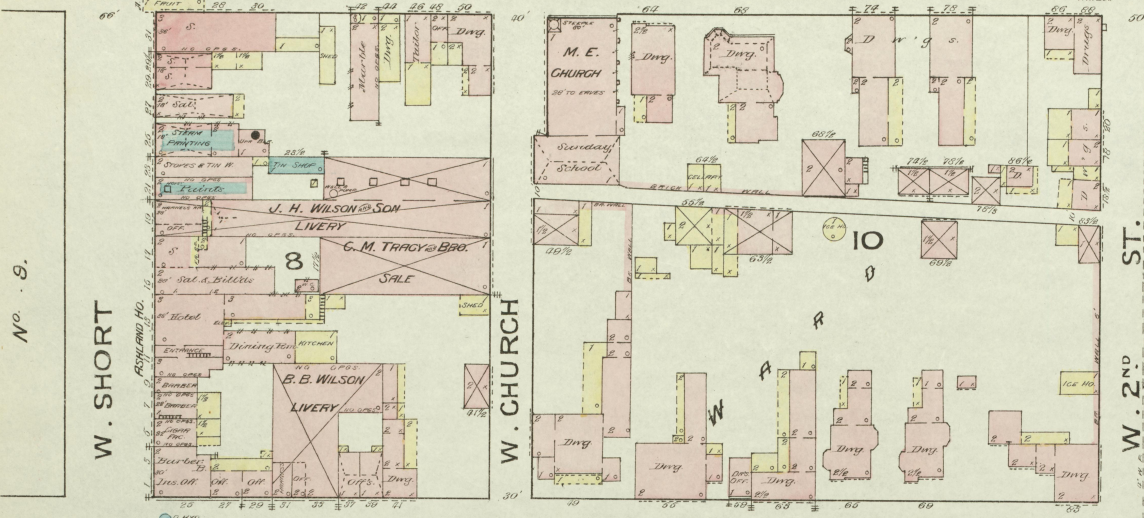
SHEET

No. 13.

12

N. BROADWAY

MAY 1886
LEXINGTON
KY.



No. 9.

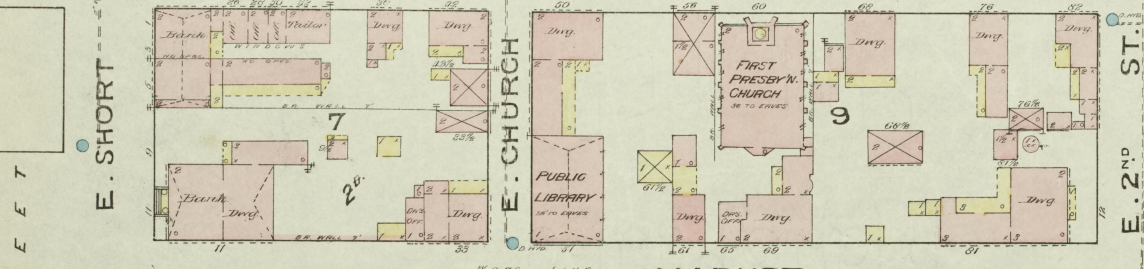
W. SHORT

W. CHURCH

W. 2ND ST.

No. 14.

N. MILL



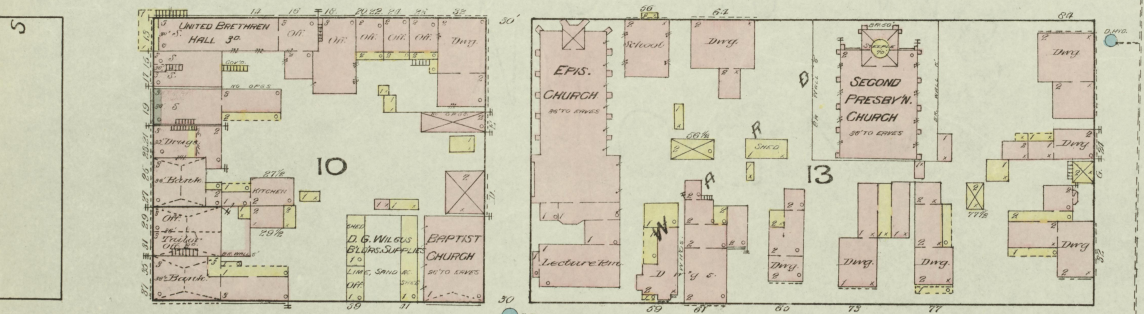
E. SHORT

E. CHURCH

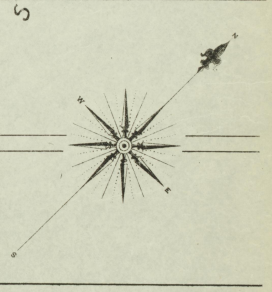
E. 2ND ST.

CITY
PARK

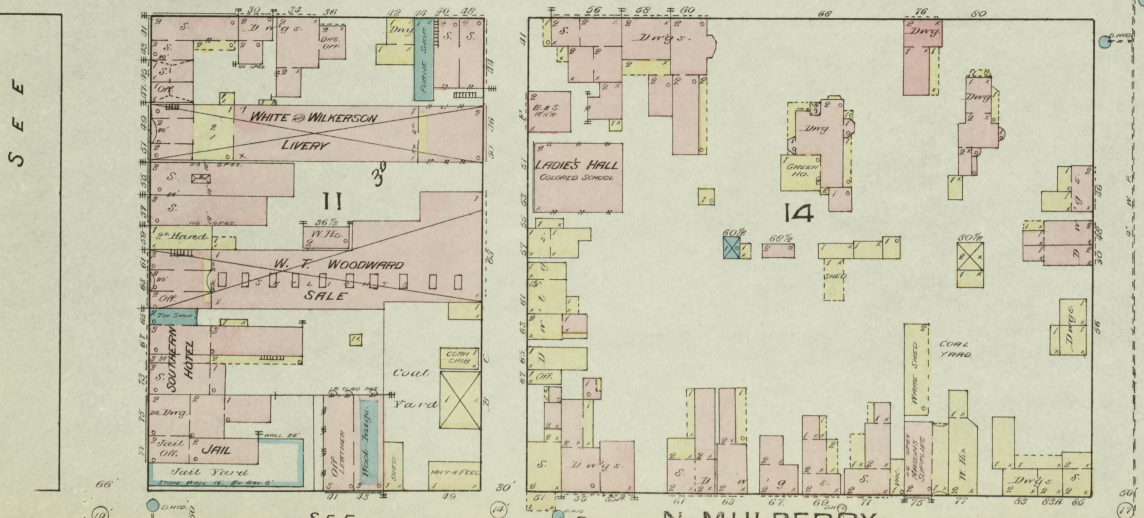
MARKET



SHEET



N. UPPER

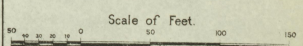


SEE

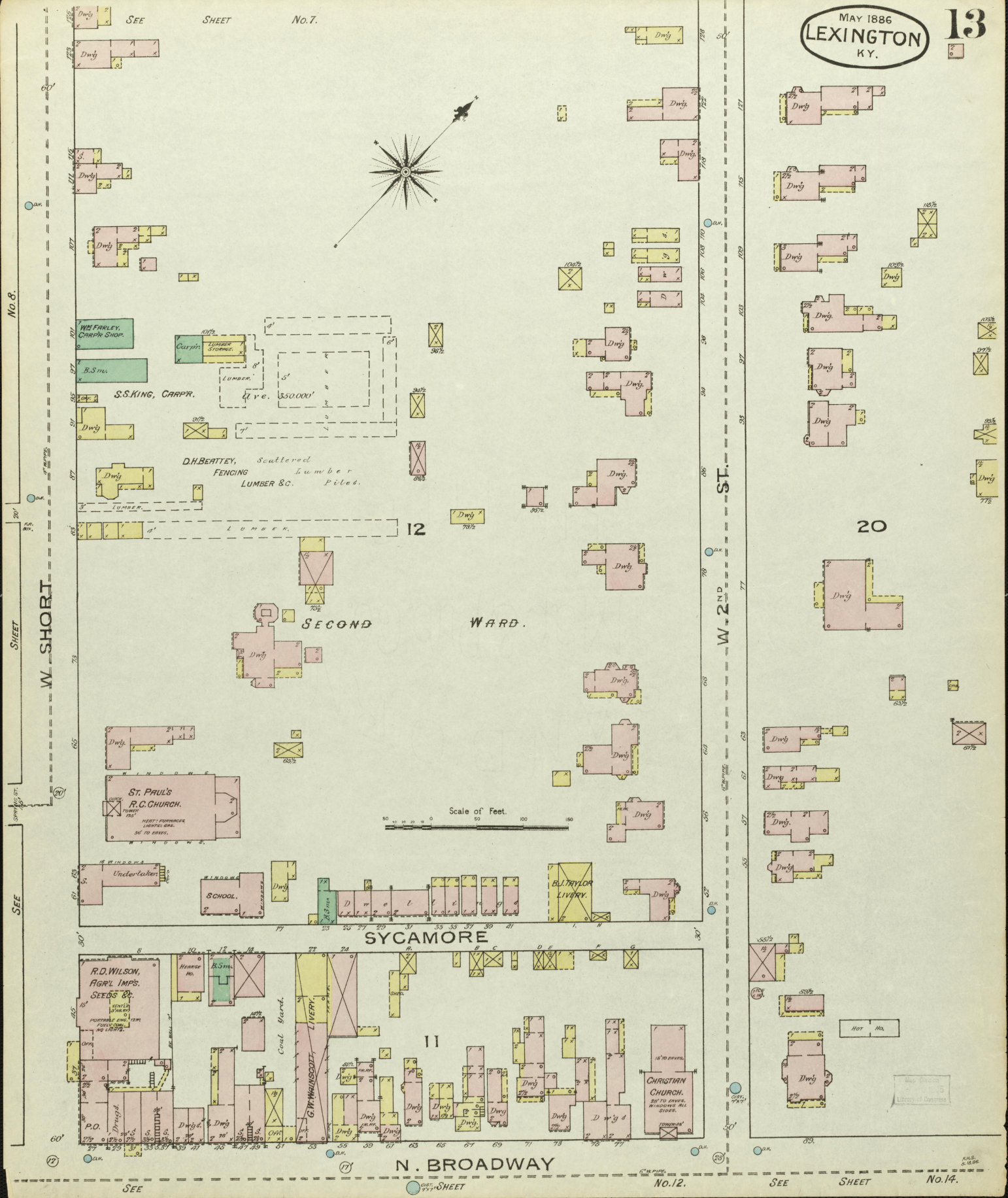
SEE

N. MULBERRY

No. 11.



Map of Lexington
1886
Library of the University of Kentucky



No. 8.

SEE SHEET
W. SHORT

SEE

SEE SHEET

SHEET No. 7.

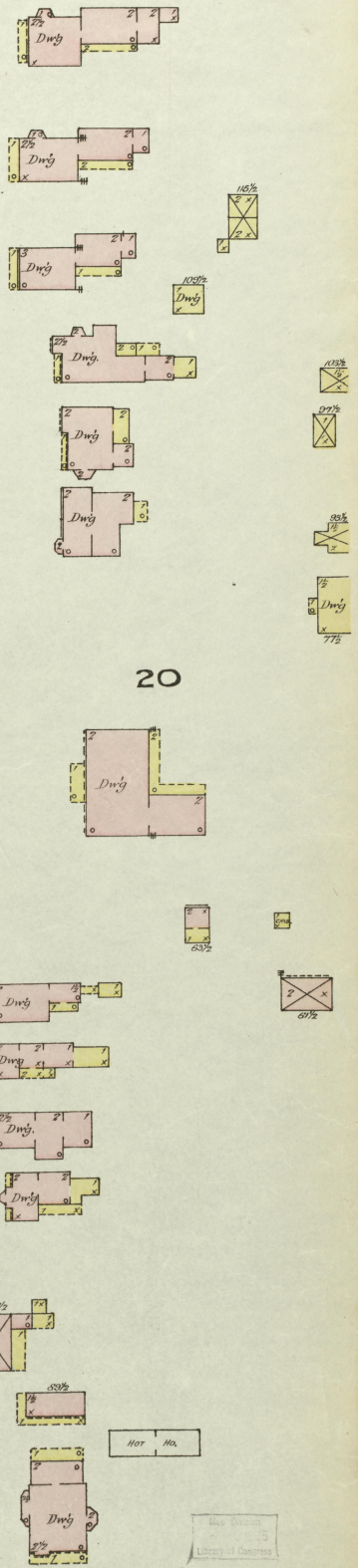
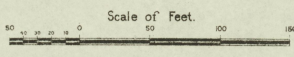
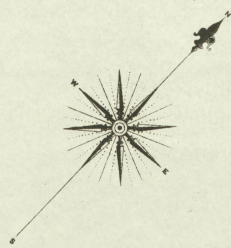
SECOND WARD.

SYCAMORE

N. BROADWAY

No. 12.

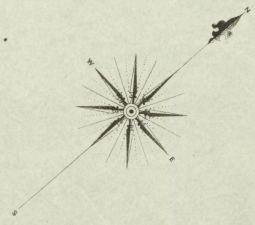
SEE SHEET No. 14.



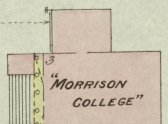
SEE SHEET N^o 13.

N. BROADWAY

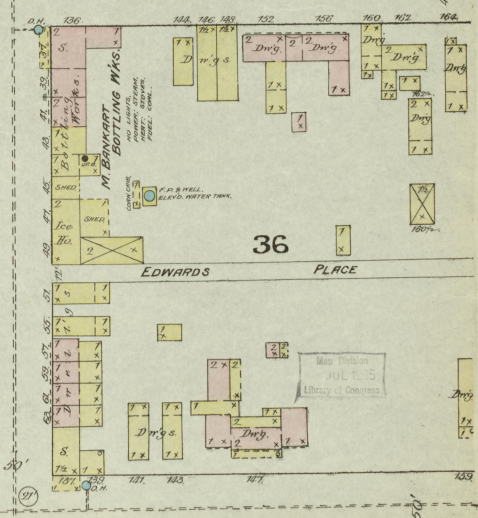
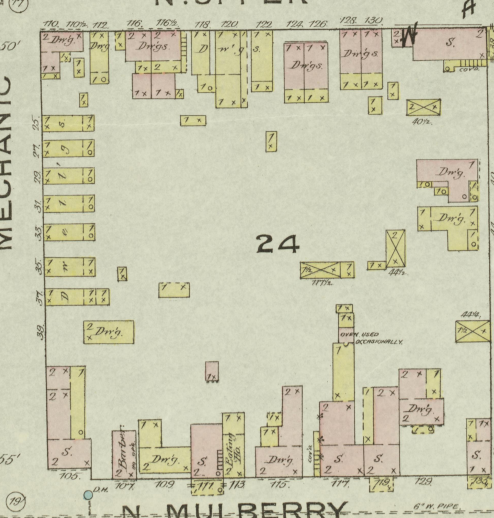
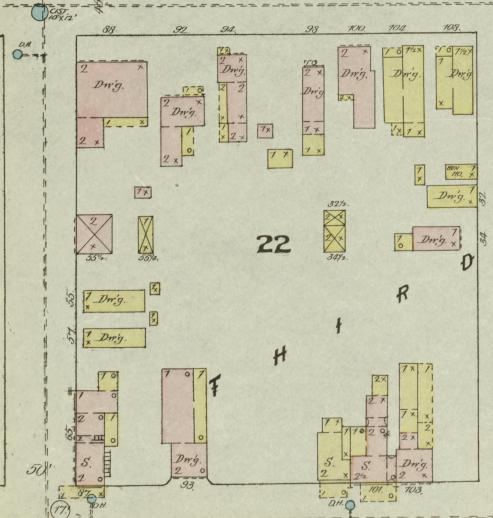
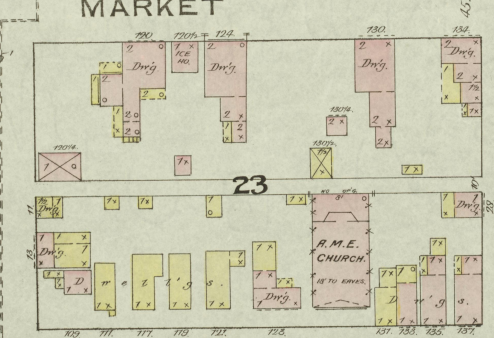
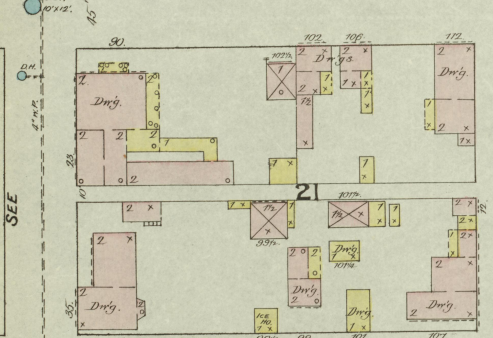
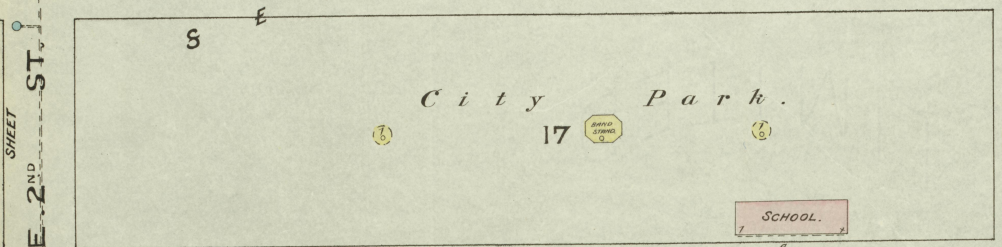
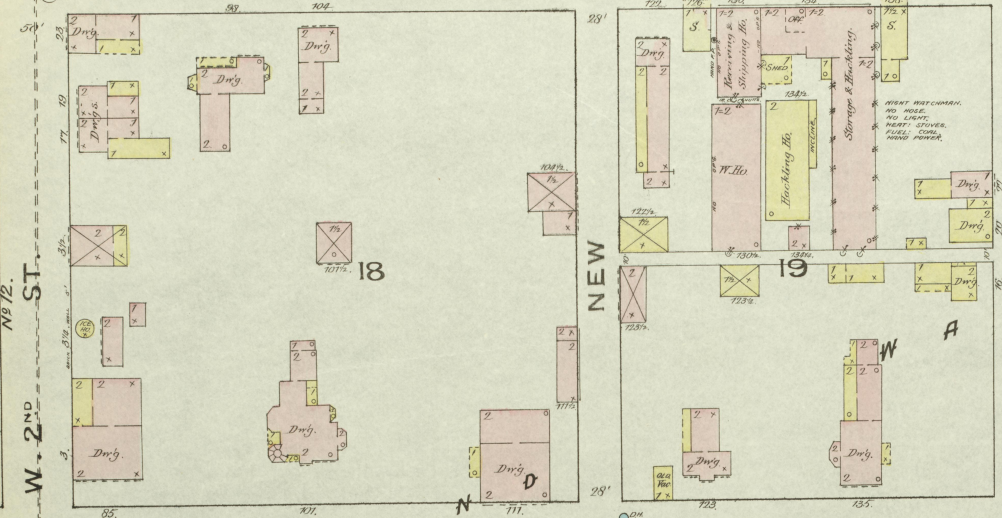
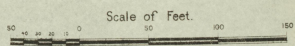
AVERY S. WINSTON
HEMP FIC.



KENTUCKY UNIVERSITY.



27



SEE SHEET N^o 11.

SEE SHEET N^o 15.

MAY 1886
LEXINGTON
KY.

SEE SHEET NO. 10
Lumbers

**E.P. SPOTSWOOD
PLANING MILL**
BUILT 1882, REBUILT 1886
BRICK 1 1/2
FRAME 2 1/2
CLAY W. FLOOR
100' FE. HOSE CITY WATER, BELLOWS, HEAT, STOVES 2 (TO BE STOVEN)
AND BELLOWS, FUEL, COAL & SHAWMATS
FURN. CROSS CUT M. & S. SAW, 1 FLOORING MACH. SHAPER & BUCKING
MACH. CROSS CUT, 1 SHED & SCROLL SAW, EMERY, BUCKING
STICKER, TRIMMER, PRESSER, TURNING LATHE, 1 MORTICER,
BLANK TURNER, HAND BUCKING MACH. 1

REG. CLARK & BRO.
BUILDERS
MOR. IMPLT. W. HD. STREET CAR
CO. PRINT
SHOP
OFF.

**C.&O. R.R.
FREIGHT DEPOT**
VENTILATOR 10'

4TH WARD

ROSE

8

E. MAIN

3RD WARD

E. MAIN

4TH WARD

MAGOWAN

W. SHORT

**H.B. NELSON & BRO.
HACKLING HO.**
FOUNDRY
STOVES
LARGEST ST
STONE
125 TO FALDNG

HEMP & SEED W.H.O.
TRAIL CLO. SHEDS
SWITCH
Library of C. H. H.

LEXINGTON MFG CO.
MIGHT W/FORMING, 100' x 1400'
HEAT STOVES, FUEL, COAL,
NO LIGHTS

Detached 1/2 Mile S.E. of Court Ho.

1ST WARD

16

HACKLING HO.

**R.C. MORGAN
HEMP FAC.**
NO WITCHING, NO LIGHTS,
NO SMOKING ALLOWED,
HEAT STOVES IN OFF.
HAND POWER,
30 EMPLOYEES.

MERINO ST.

SEE SHEET NO. 6
W. HIGH ST.

SEE SHEET NO. 3

L. & N. R.R. FREIGHT
DEPOT

Scale of Feet
0 50 100 150

STREET

K.C. R.R.

2ND WARD

STREET 6

**GWINN WARE HO.
CASSIDAY & BRO.**

OLD HACKLING HO.

**JAS. BENSONS
LIVERY**

COOPER SHOP

**COOPER SHOP
NO. 7**

COX

E. DOWLING.
25 POUNDS, FUEL, COAL & SHAWMATS

5

SEE SHEET

SEE SHEET NO. 10

SEE SHEET

SEE SHEET

SEE SHEET

SEE SHEET

SEE SHEET

SEE SHEET

SEE SHEET

15

4

Dwg

Dwg

Dwg

Dwg

Dwg

Dwg

Dwg

Dwg

Dwg

Dwg

Dwg

Dwg

Dwg

Dwg

Dwg

Dwg

Dwg

Dwg

Dwg

Dwg

Dwg

Dwg

Dwg

Dwg

Dwg

Dwg

DEWEES ST.

10' WIDE

10' WIDE

10' WIDE

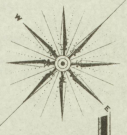
10' WIDE

10' WIDE

10' WIDE

10' WIDE

10' WIDE



N O EXPOSURE

SEE SHEET NO. 10

SEE SHEET NO. 11

SEE SHEET NO. 12

SEE SHEET NO. 13

SEE SHEET NO. 14

SEE SHEET NO. 15

SEE SHEET NO. 16

SEE SHEET NO. 17

SEE SHEET NO. 18

SEE SHEET NO. 19

SEE SHEET NO. 20

SEE SHEET NO. 21

SEE SHEET NO. 22

SEE SHEET NO. 23

SEE SHEET NO. 24

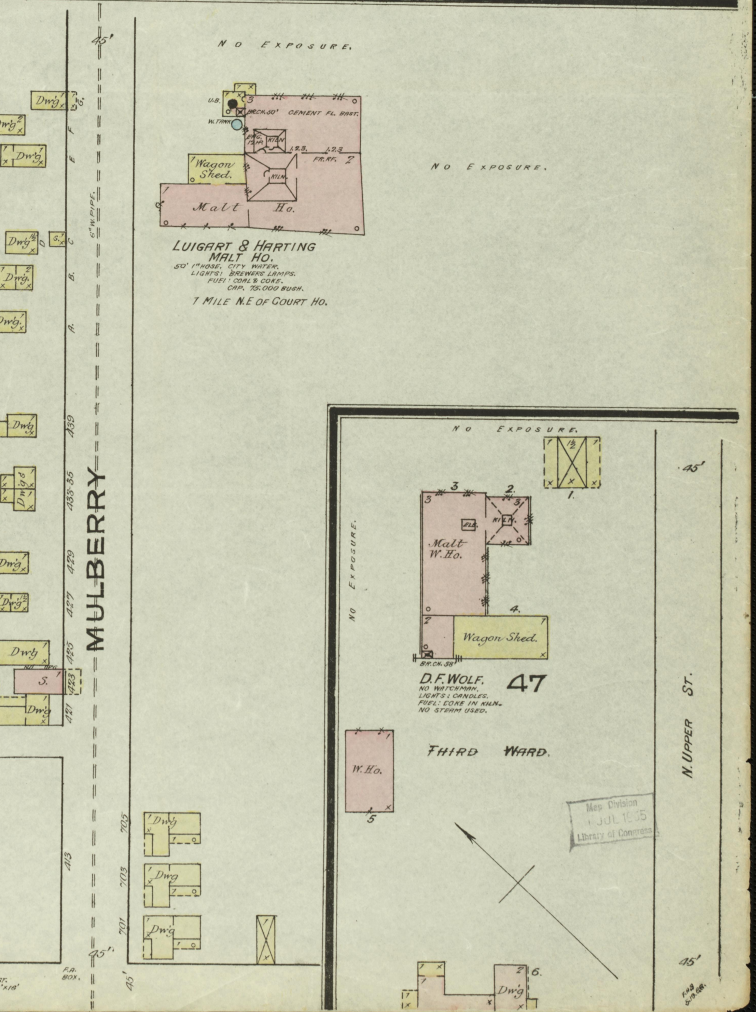
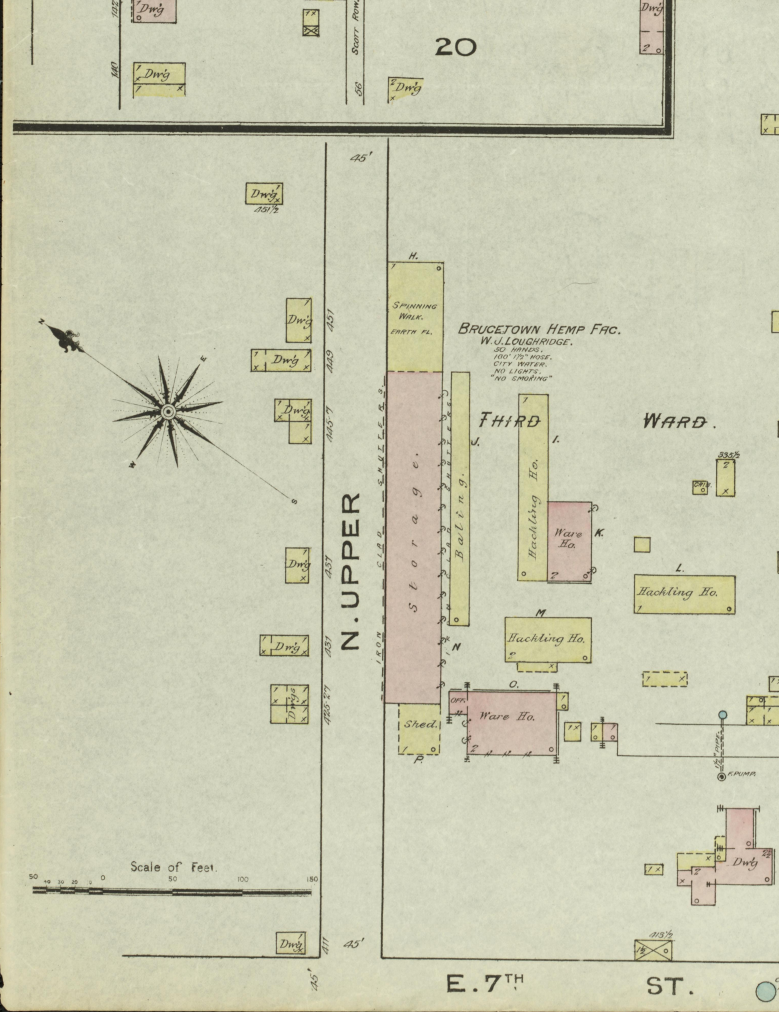
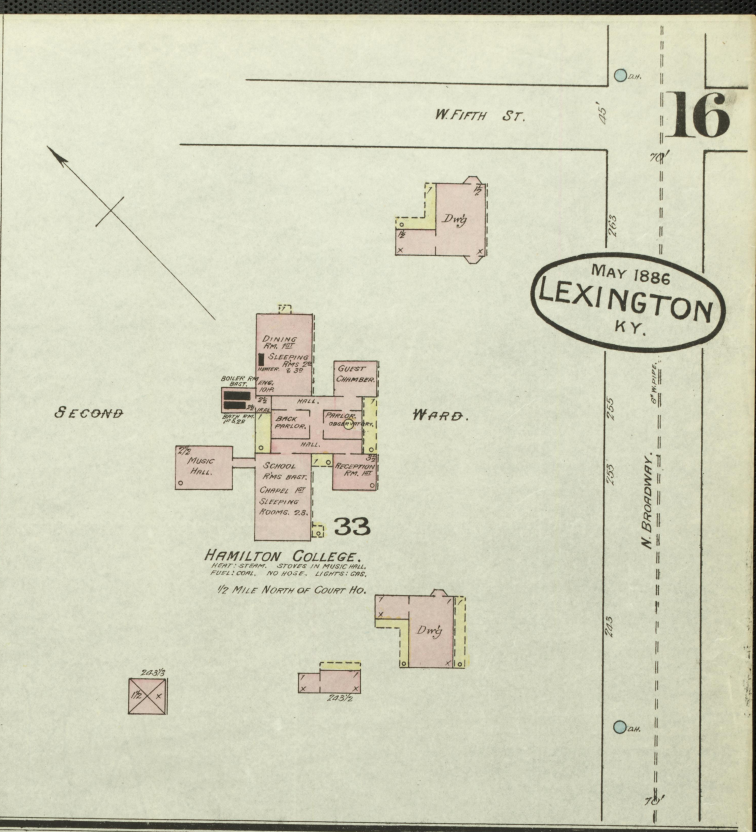
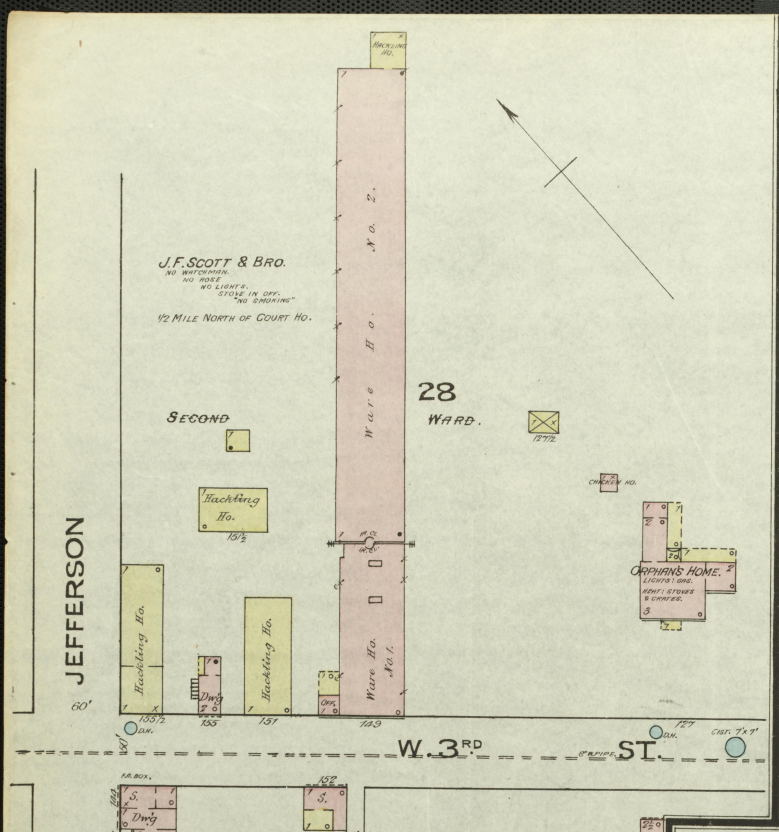
SEE SHEET NO. 25

SEE SHEET NO. 26

SEE SHEET NO. 27

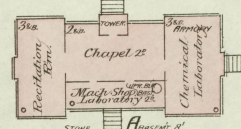
SEE SHEET NO. 28

SEE SHEET NO. 29

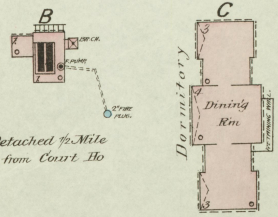


MAY 1886
LEXINGTON
KY.

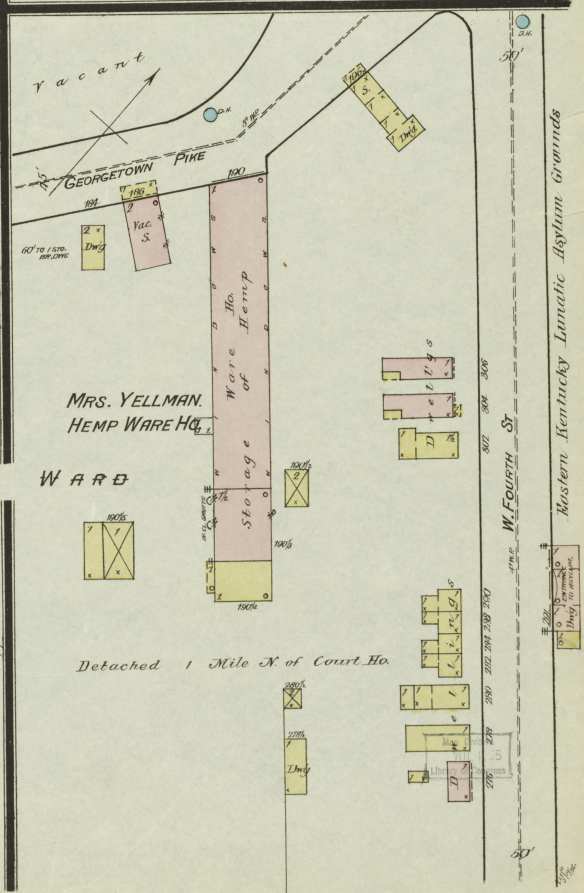
KENTUCKY AGRICULTURAL & MECHANICAL COLLEGE



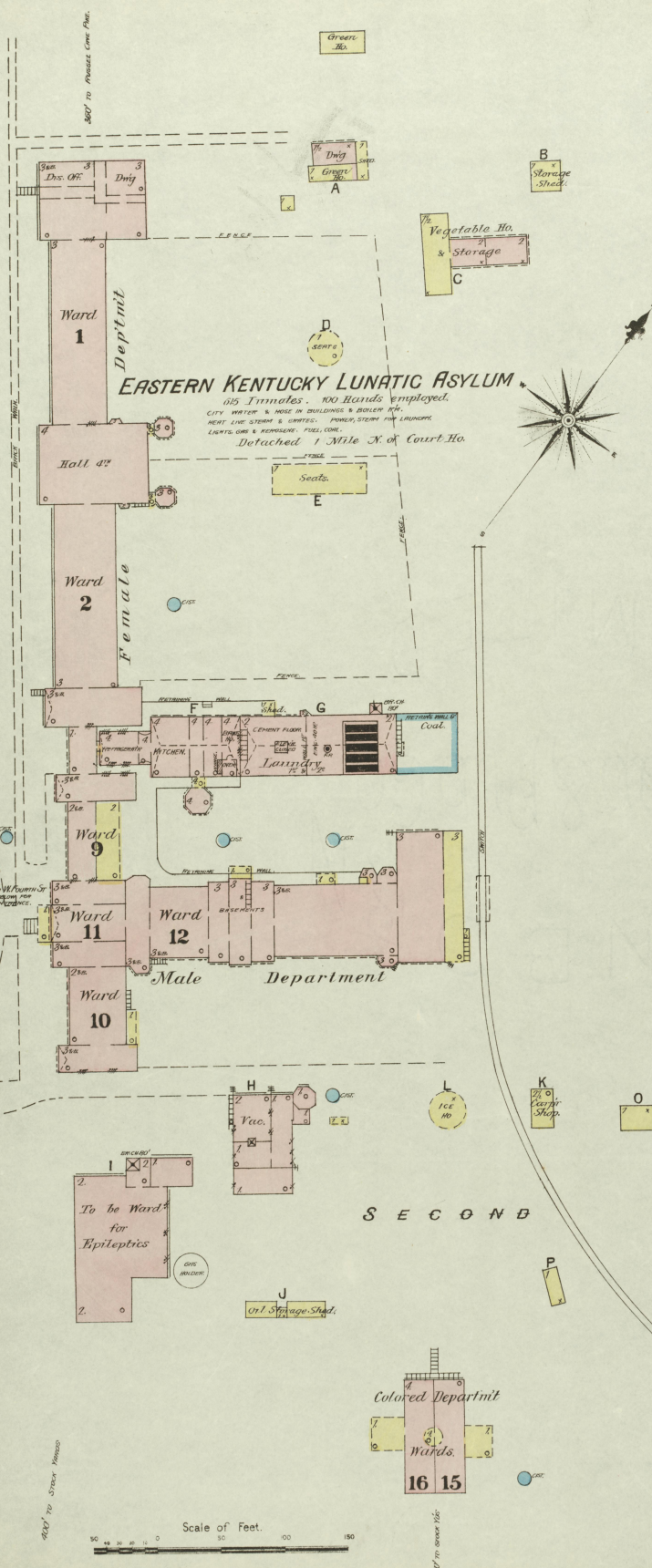
FIRST WARD



Detached 1/2 Mile SW. from Court Ho.



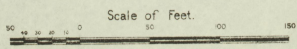
Detached 1 Mile N. of Court Ho.



EASTERN KENTUCKY LUNATIC ASYLUM

65 Acres. 100 Boards employed.
CITY WATER & HOSE IN BUILDINGS & GROUNDS.
HEAT LIVE STEAM & WATER. POWER, STORES AND LAUNDRY.
LIGHTS GAS & REFRIGER. FUEL COAL.
Detached 1 Mile N. of Court Ho.

SECOND WARD



800' to Street Ward

800' to Street Ho.

800' to Street Ward

800' to Street Ho.

800' to Street Ho.

Eastern Kentucky Lunatic Asylum grounds

MAY 1886
LEXINGTON
KY.

WILLARD

WM. TARR & Co.

"ASHLAND"

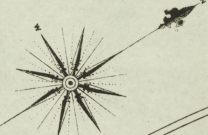
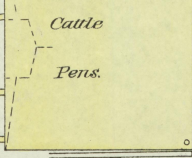
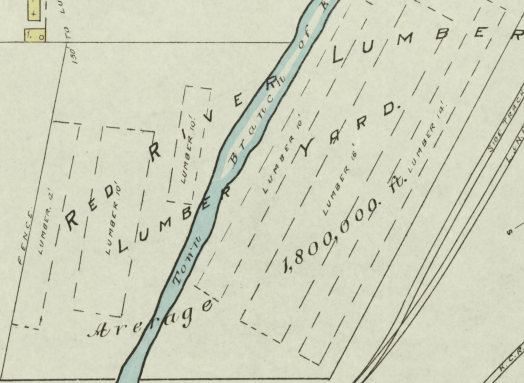
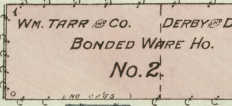
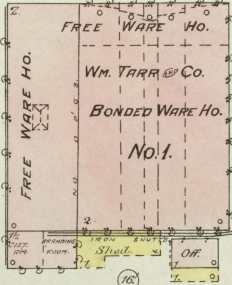
REGISTERED DISTILLERY No. 1. 7TH DIST.

Fayette Co. Ky.

MACH. AND TOOLS BUILT FOR THIS DISTILLERY. WORKING YIELD 20 BBL. PER DAY.
NIGHT & SUNDAY WATCHMAN. GOVERNMENT WATCHMAN.
FENCE PUMP & WATER TOWER. 200 BRASSES. FIRE ALARMS. KEY IN OFF.
FUEL COAL. POWER STEAM. LIGHTS, LAMPS & LANTERNS. KEROSENE OIL. HEAT STOVES.

MANCHESTER

17 (NOT OPENED)



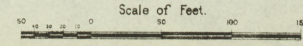
COX

CHESS-CARLEY Co.

NO HOSE. NO LIGHTS.
NO NIGHT WATCHMAN.

16

Scale of Feet.



SEE SHEET No. 15.

Map Division
JUL 1885
Library of Congress

MAY 1886
LEXINGTON
KY.

1 Mile E. of Court Ho.

ROAD TO GRAND STAND SEE BELOW.

THIRD WARD.

1 MILE RACE TRACK.

ASSOCIATION GROUNDS.

RACE TRACK.

KENTUCKY

1 MILE RACE TRACK.

Delachant Frame Dm's
STREET.

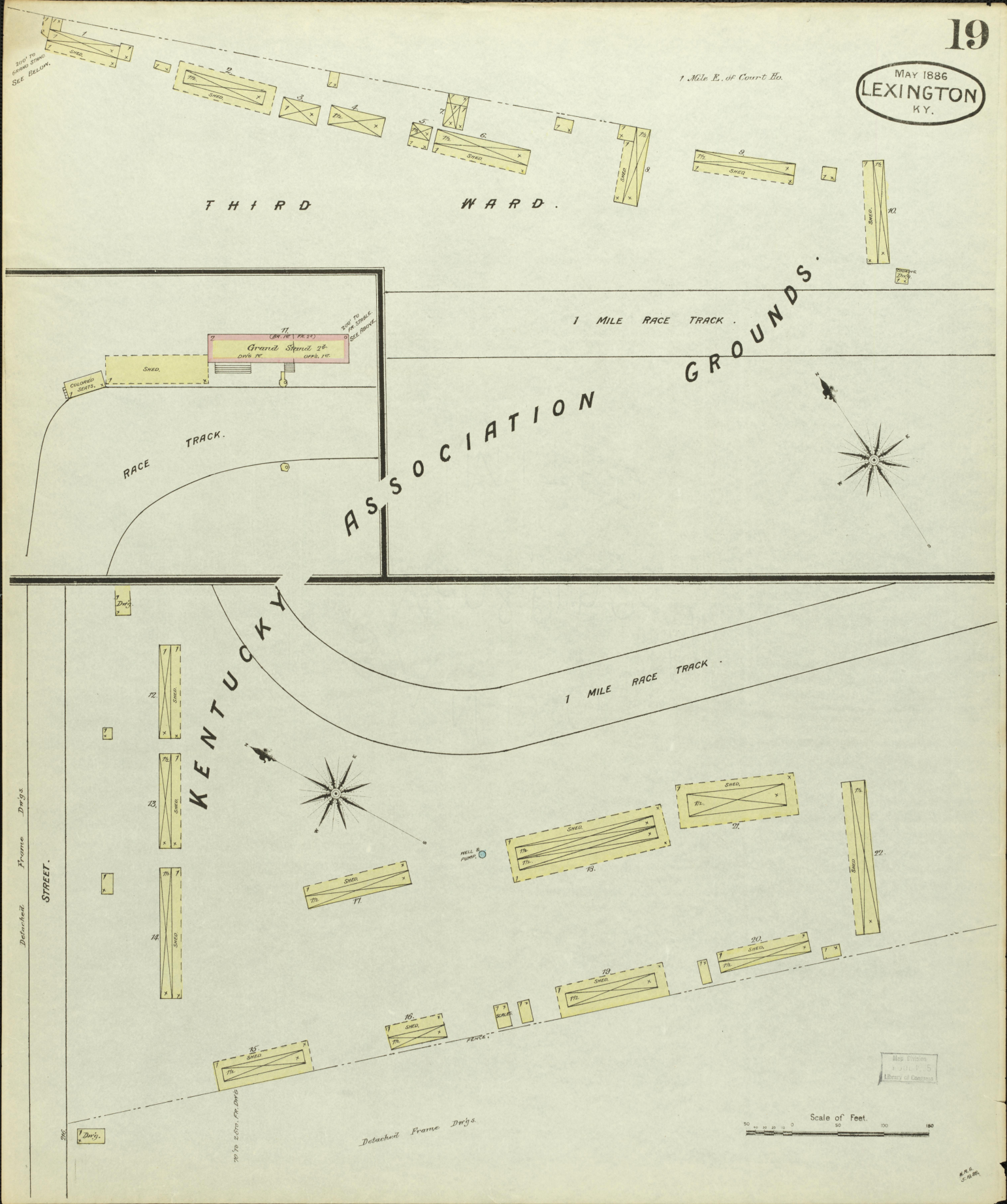
10 1/2 to 2 1/2 mi. Fr. Dm's

Delachant Frame Dm's

Scale of Feet.
50 100 150

Map Division
JULY 5
Library of Congress

W.C. B. & Co. 1886

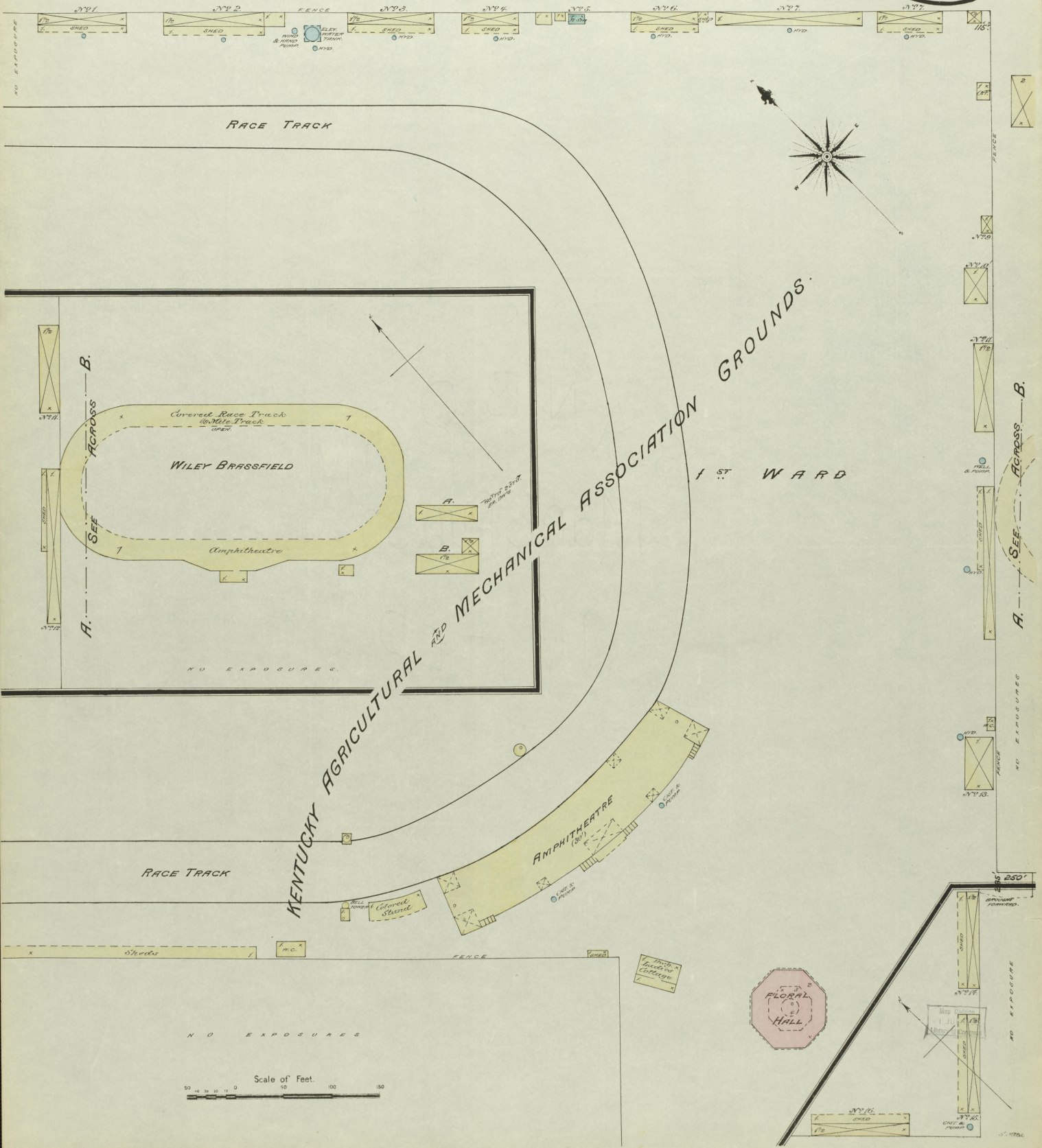


N O E X P O S U R E S

DETACHED 1 MILE
S. W. OF COURT HO.

MAY 1886
LEXINGTON
KY.

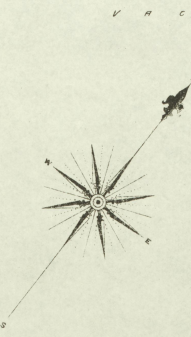
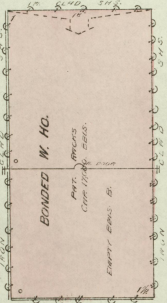
20



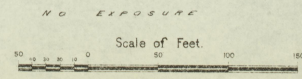
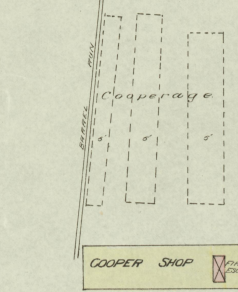
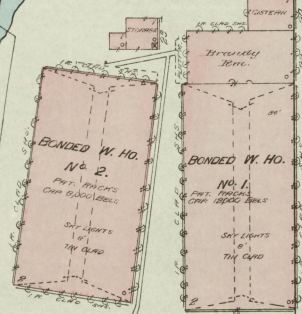
Scale of Feet
50 100 150

SANDERSVILLE

STOLL, HAMILTON & CO.
FORMERLY STOLL, CLAY & CO.
REGISTERED DISTILLERY No. 12, 7TH DIST.
Fayette Co. Ky.
2 1/2 miles north of Lexington Court Ho.
WATER - 300 GALS PER DAY, YIELD 1000 GALS, NIGHT & DAY WITH POWER
P. PUMP, PIPES IN BLUE, HOSE ATTACHED 200 FT. OF 1 1/2" HOSE
FUEL - COAL, LIGHTS - LANTERNS, HEAT & POWER - STEAM



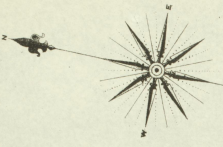
PEPPER DISTILLERY
FORMERLY HENRY CLAY
DISTILLERY
JAS. E. PEPPER & CO.
REGISTERED DISTILLERY No. 5, 7TH DIST.
Fayette Co. Ky.
1 1/2 miles west of Court Ho.
WATER - 300 GALS PER DAY, YIELD 1000 GALS, NIGHT & DAY WITH POWER
P. PUMP, PIPES IN BLUE, HOSE ATTACHED 200 FT. OF 1 1/2" HOSE
FUEL - COAL, LIGHTS - LANTERNS, HEAT & POWER - STEAM



See No. 10
See No. 11
See No. 12
See No. 13
See No. 14
See No. 15
See No. 16
See No. 17
See No. 18
See No. 19
See No. 20
See No. 21
See No. 22
See No. 23
See No. 24
See No. 25
See No. 26
See No. 27
See No. 28
See No. 29
See No. 30
See No. 31
See No. 32
See No. 33
See No. 34
See No. 35
See No. 36
See No. 37
See No. 38
See No. 39
See No. 40
See No. 41
See No. 42
See No. 43
See No. 44
See No. 45
See No. 46
See No. 47
See No. 48
See No. 49
See No. 50
See No. 51
See No. 52
See No. 53
See No. 54
See No. 55
See No. 56
See No. 57
See No. 58
See No. 59
See No. 60
See No. 61
See No. 62
See No. 63
See No. 64
See No. 65
See No. 66
See No. 67
See No. 68
See No. 69
See No. 70
See No. 71
See No. 72
See No. 73
See No. 74
See No. 75
See No. 76
See No. 77
See No. 78
See No. 79
See No. 80
See No. 81
See No. 82
See No. 83
See No. 84
See No. 85
See No. 86
See No. 87
See No. 88
See No. 89
See No. 90
See No. 91
See No. 92
See No. 93
See No. 94
See No. 95
See No. 96
See No. 97
See No. 98
See No. 99
See No. 100

See Division
JUL 15 1885
Library of Congress

HICKMAN CREEK



HILL SIDE

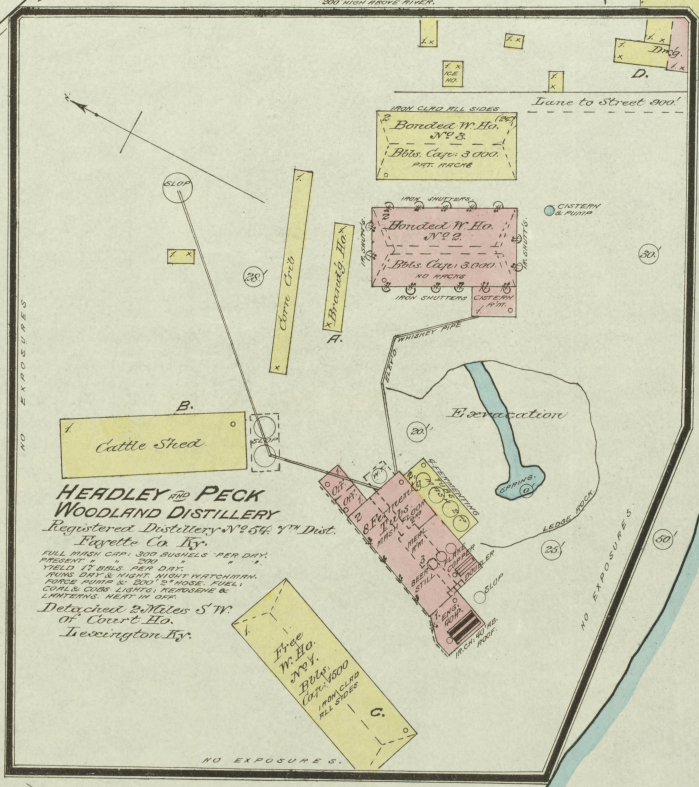
WARE HO. "D"
Bonded Ware Ho.
Bbls Cap. 6000
PART. ANCHS.

Bonded Ware Ho.
Bbls Cap. 8000
PART. ANCHS.

E. J. CURLEY & CO.
BLUE GRASS DISTILLERY
REGISTERED DISTILLERY
No 3-8th Dist.
JESSAMINE CO. KY.
MARCH 30th CAP. OF WARE: 750 BUNNELS; YIELD 75 BBL.
PER DAY; PRODUCE 4 BBL. 570
MARCH 30th CAP. OF WARE: 1000 BBL.; YIELD 100 BBL.
PER DAY; PRODUCE 10 BBL. 1000
MARCH 30th CAP. OF WARE: 1000 BBL.; YIELD 100 BBL.
PER DAY; PRODUCE 10 BBL. 1000
LUMPS & LAMPERS: BEST IN WEST BROWN, COVER, STEAM,
DETACHED BUILDING S. of Lexington, Ky.

MAY 1886
LEXINGTON
KY.

"BOONE'S KNOB"
300' HIGH ABOVE RIVER.



WARE HO. "E"
Bonded W. Ho.
Bbls Cap. 6000
PART. ANCHS.

Bonded Ware Ho.
Bbls Cap. 8000
PART. ANCHS.

HEADLEY & PECK
WOODLAND DISTILLERY
Registered Distillery No 7th Dist.
Fayette Co. Ky.
MARCH 30th CAP. 300 BUNNELS; YIELD 30 BBL.
PER DAY; PRODUCE 3 BBL. 300
MARCH 30th CAP. 200 BBL.; YIELD 20 BBL.
PER DAY; PRODUCE 2 BBL. 200
MARCH 30th CAP. 800 BBL.; YIELD 80 BBL.
PER DAY; PRODUCE 8 BBL. 800
LUMPS & LAMPERS: BEST IN WEST BROWN, COVER, STEAM,
DETACHED BUILDING S^W of Court Ho.,
Lexington, Ky.

KENTUCKY RIVER

"CAMP NELSON"
P.O. 21
Blount Co.

TURNPIKE

Covered Bridge

E. J. CURLEY
REGISTERED DISTILLERY
No 25-8th Dist.
Jessamine Co. Ky.
MARCH 30th CAP. 1000 BUNNELS; YIELD 100 BBL.
PER DAY; PRODUCE 10 BBL. 1000
MARCH 30th CAP. 1000 BBL.; YIELD 100 BBL.
PER DAY; PRODUCE 10 BBL. 1000
MARCH 30th CAP. 1000 BBL.; YIELD 100 BBL.
PER DAY; PRODUCE 10 BBL. 1000
LUMPS & LAMPERS: BEST IN WEST BROWN, COVER, STEAM,
DETACHED BUILDING S. of Lexington, Ky.

Map Division
JUL 15 1886
Library of Congress

