



WATER FACILITIES:
Harrodsburg water works gravity and direct pumping system supply from Salt River 7 1/2 miles S. W. of Court Ho. is pumped direct through mains by one compound duplex beam pump and one duplex beam pump, capacity 300,000 gals. each per 24 hours, to storage tank on hill 1/2 mile S. of Court Ho. giving a gravity pressure of Court Ho. of about 80 lbs. per square inch. Fire pressure 120 lbs. per square inch. 3/4 mile of 4" dia. 8" gals. of water pipe 83 hydrants. System installed in 1892.

FIRE DEPT.:
Semi paid 5 men. Horse wagon carries 1000 hose. Horse reel carries 500 hose. 7 1/2" x 1 1/2" Truck 5 horses. Swinging harness. Public bell fire alarm for day. Public whistle fire alarm for night.
Public lights electric. Main Streets macadamized.

INCLUDING BURGINKY.
POPULATION 800.
WATER FACILITIES: None.
FIRE DEPT.: None.

INDEX

STREETS	Number	Number
Broadway	10	14
Cane Run Pike	10	10
Chiles N.	10	10
Courthouse	10	10
Crawford Ave.	10	10
Cherry Ave.	10	10
Duaneville	10	10
Depot Ave.	10	10
East N.	10	10
Factory B.	10	10
Greenville N.	10	10
Hill	10	10
Lane N.	10	10
Leasington	10	10
Main N.	10	10
Walnut	10	10
Warwick	10	10
Water K.	10	10
West N.	10	10
Woodland Ave.	10	10

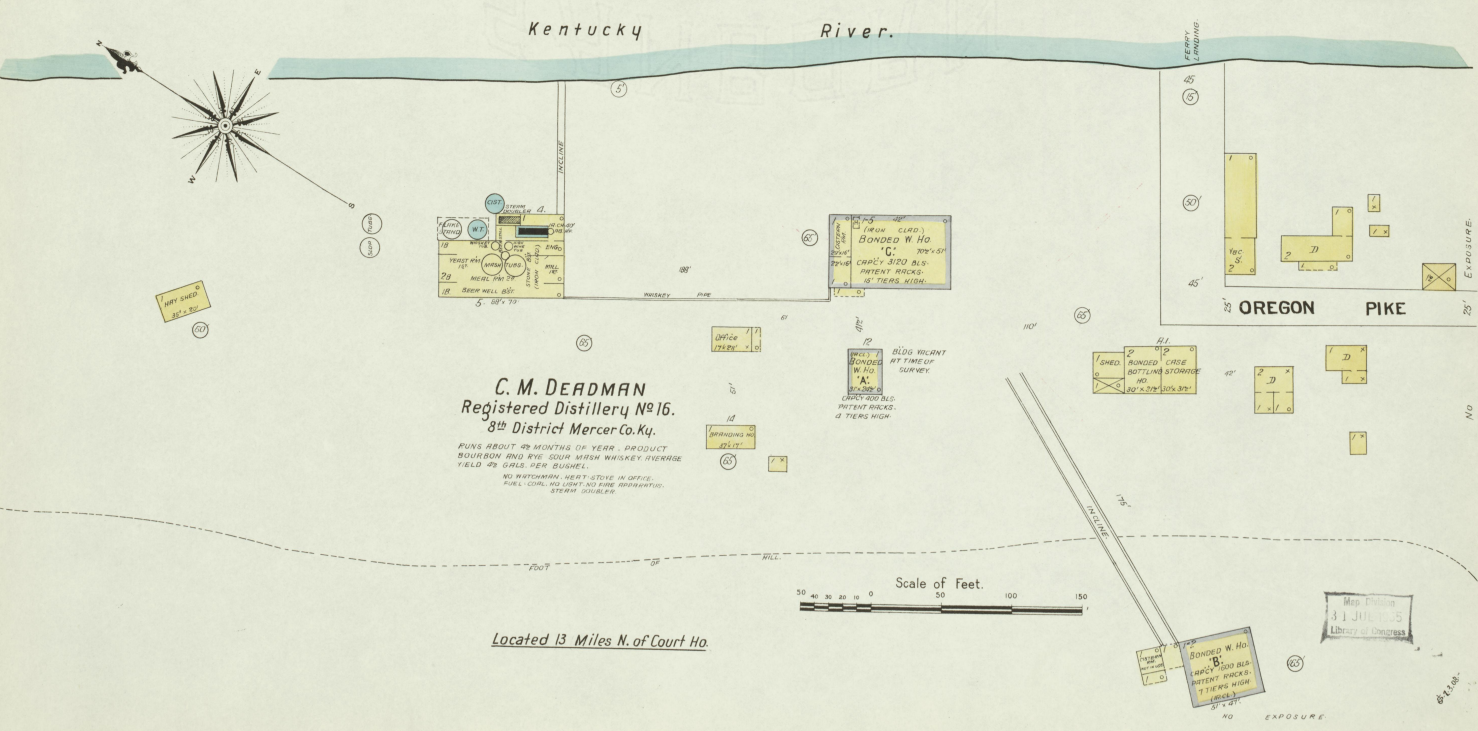
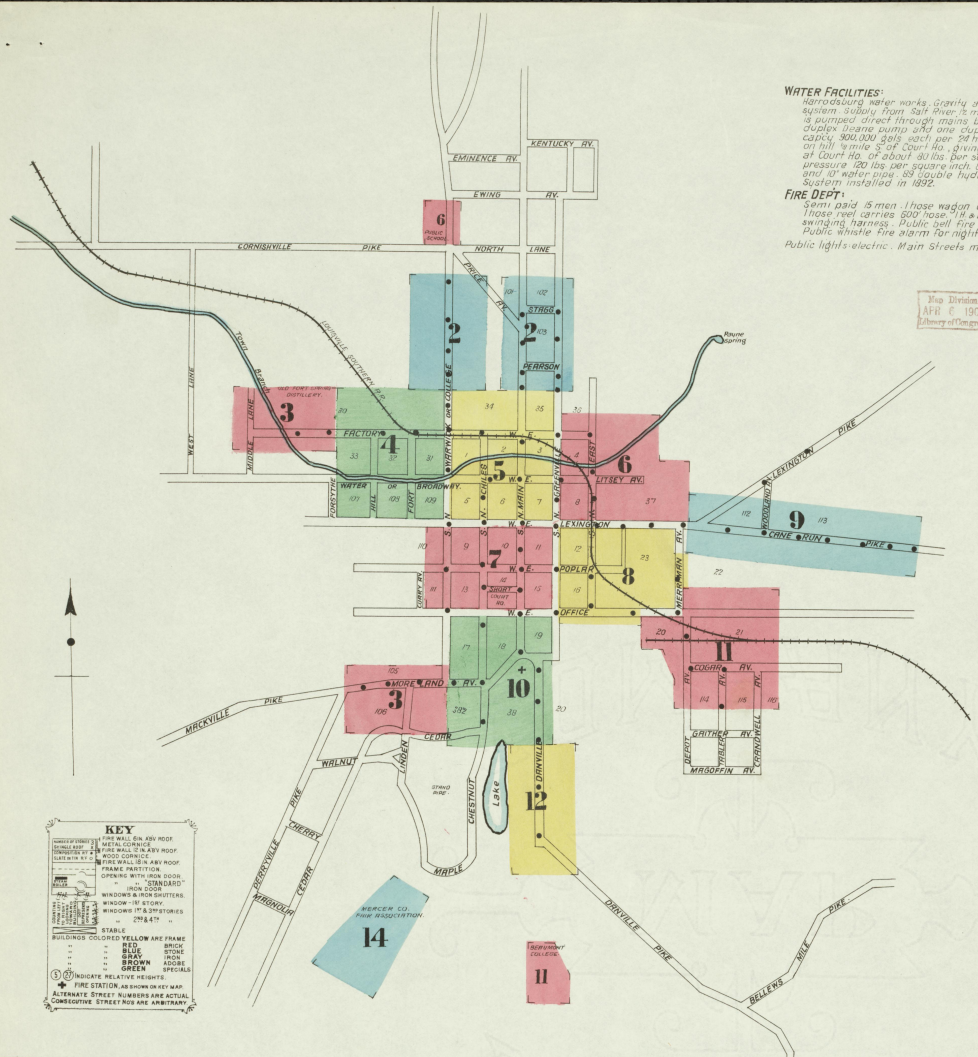
SPECIALS	Number	Number
African M. E. Church	10	10
Baptist Church at Burgin	10	10
Beaumont College	10	10
Central Baptist Church	10	10
Christus Church	10	10
City Building at Burgin	10	10
Dawson, C. M. Distillery	10	10
Drawing Bro. Distillery	10	10
Freeman, J. T. Wagon Washhouse	10	10
Gilman & Tully Roller Mills	10	10
Guyot & Vogel, Poultry & Produce	10	10
Harrodsburg Academy	10	10
Electro Light Plant	10	10
Public School	10	10
Roller Mill	10	10
Roller Skating Club	10	10
Smith, H. C. & Sons, Roller Mills	10	10
Standard Oil Co. Storage	10	10
Stewart, A. E., Horse Flaming Mill	10	10
Thompson, J. B., Distillery	10	10
Vanadell, L. S., Feed Mill	10	10
Voris, J. T. & A. S. Hemp & Wagon Wash	10	10
Y. M. C. A. Building	10	10

KEY

- 1st Floor
- 2nd Floor
- 3rd Floor
- 4th Floor
- 5th Floor
- 6th Floor
- 7th Floor
- 8th Floor
- 9th Floor
- 10th Floor
- 11th Floor
- 12th Floor
- 13th Floor
- 14th Floor

STABLES
BUILDINGS COLORED YELLOW ARE FRAME
RED
BRICK
BLUE
STONE
BROWN
ADDER
SPECIALS

INDICATES RELATIVE HEIGHTS
FIRE STATION, AS SHOWN ON KEY MAP
ALTERNATE STREET NUMBERS ARE ACTUAL
CORRECTIVE STREET NUMBERS ARE ALTERNATE



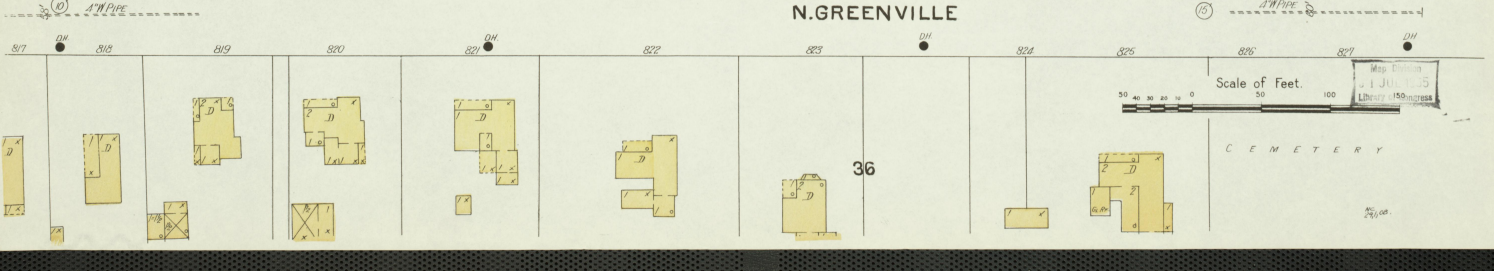
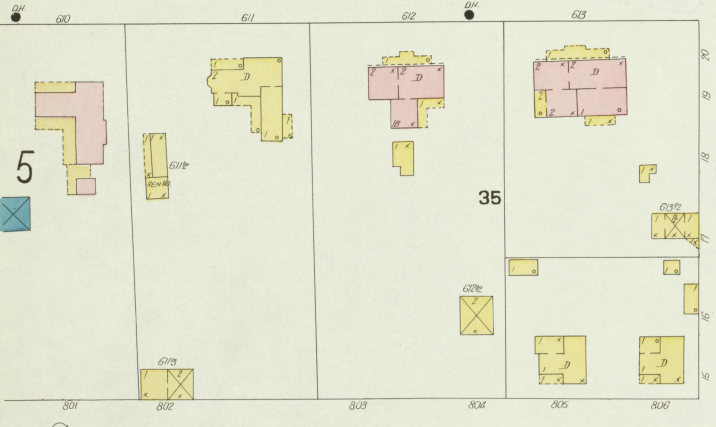
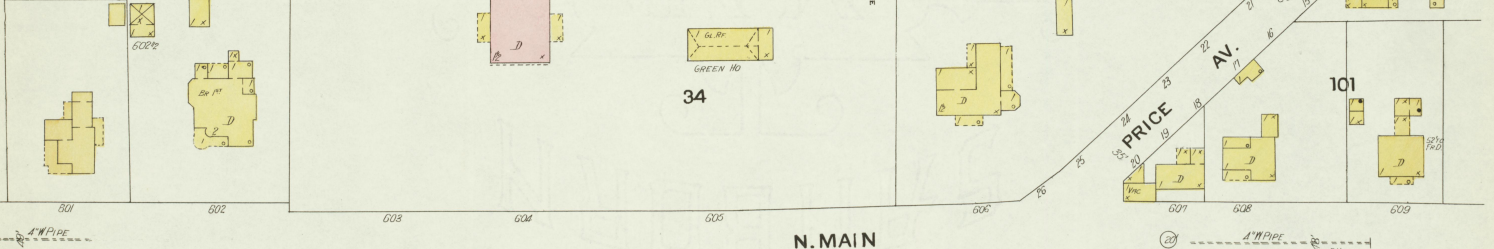
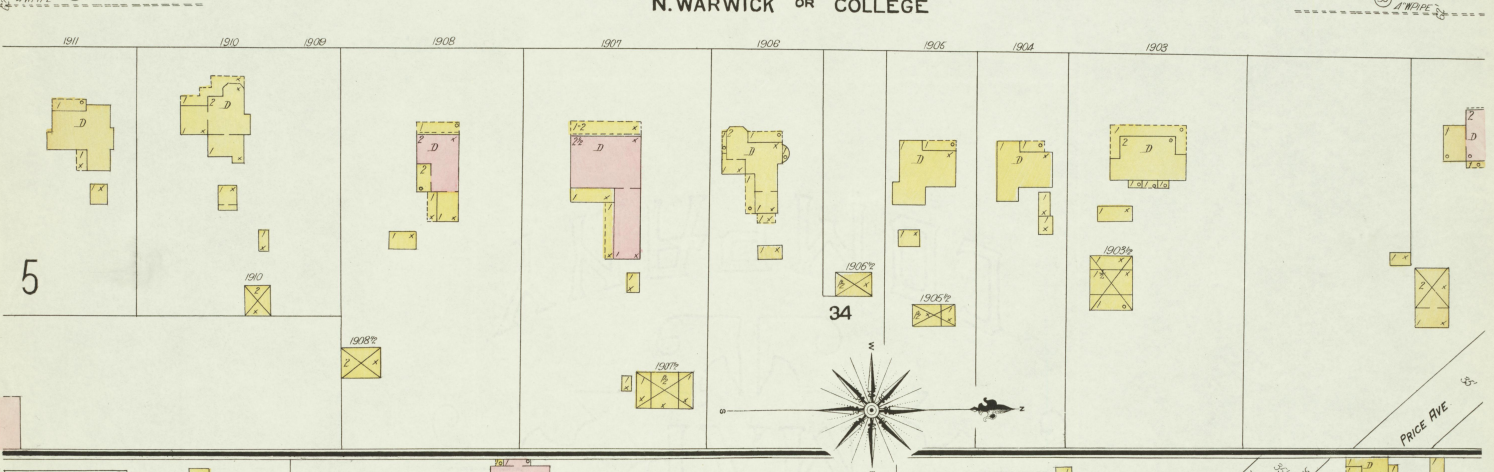
C. M. DEADMAN
Registered Distillery No. 16.
8th District Mercer Co. Ky.

RUNS ABOUT 12 MONTHS OF YEAR. PRODUCT
BURBON AND FINE SOUV. WHISKY INVERSE
YIELD 42 GALS. PER BUSHEL.
NO WATERSHED. BEST STATE IN OFFICE.
FULL CORN. NO CONTAINERS. BOTTLED.
STEAM COOKERS.

Scale of Feet.
50 100 150

Located 13 Miles N. of Court Ho.

JAN 1908
HARRODSBURG
KY.



JAN 1908
HARRODSBURG
KY.

SWARWICK OR COLLEGE 3

MORELAND

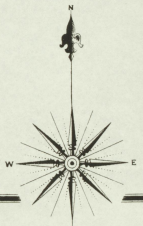
AV.

LINDEN

10

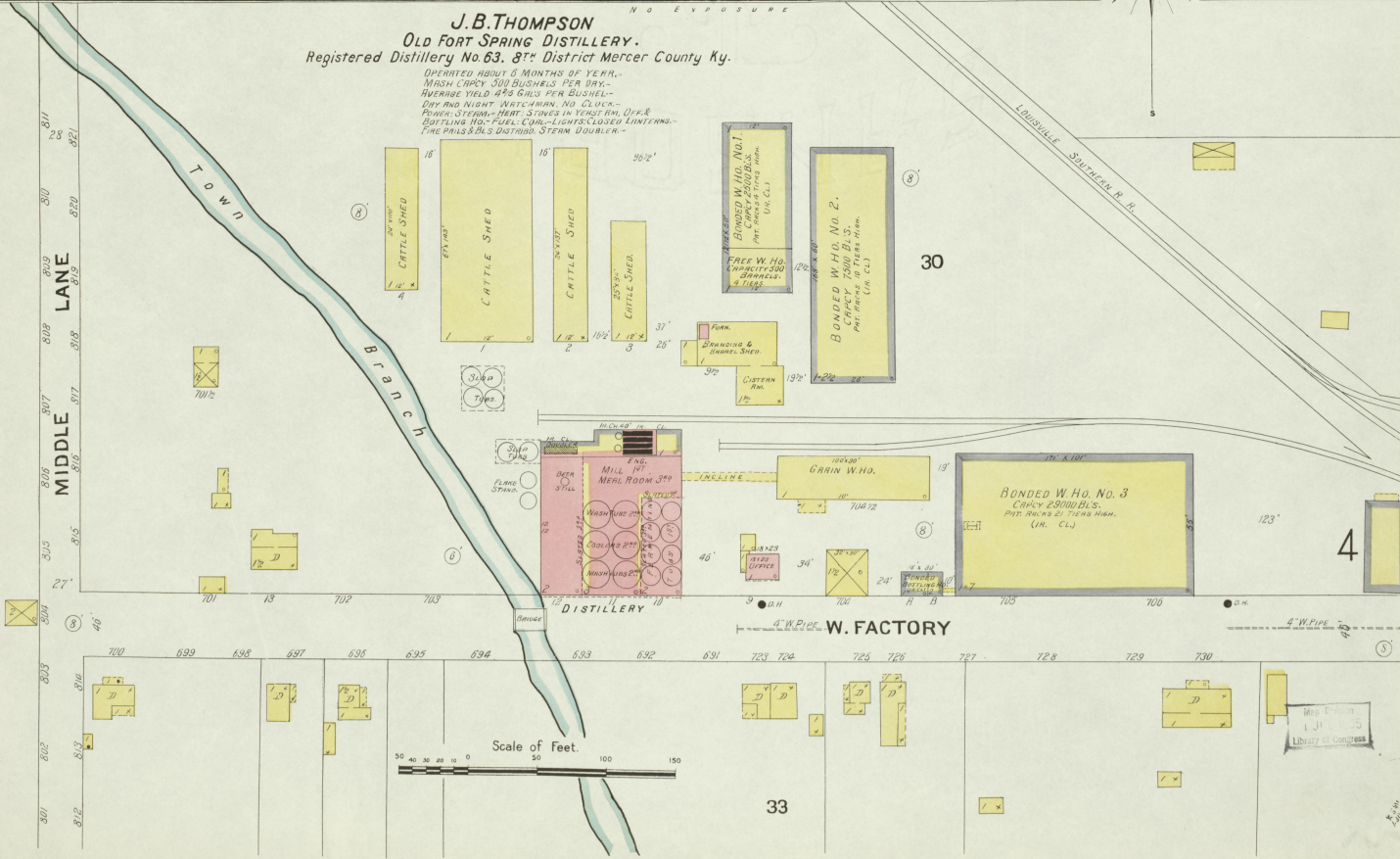
106

38 1/2



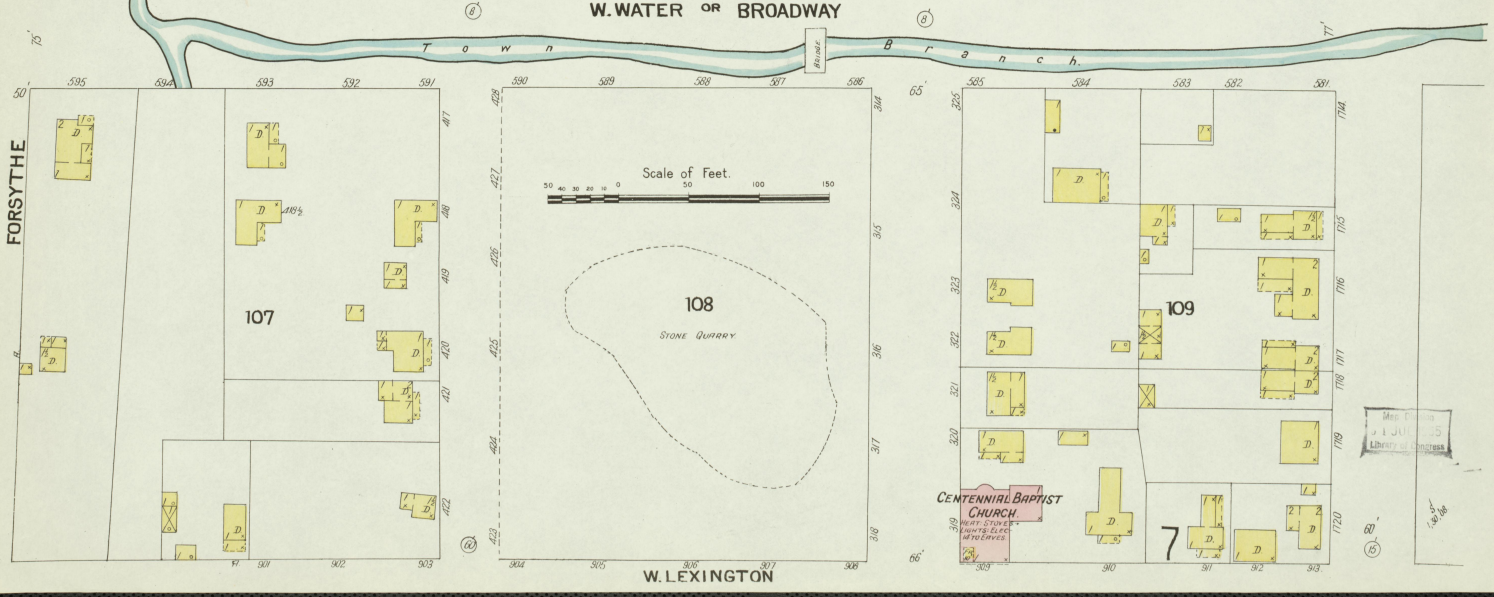
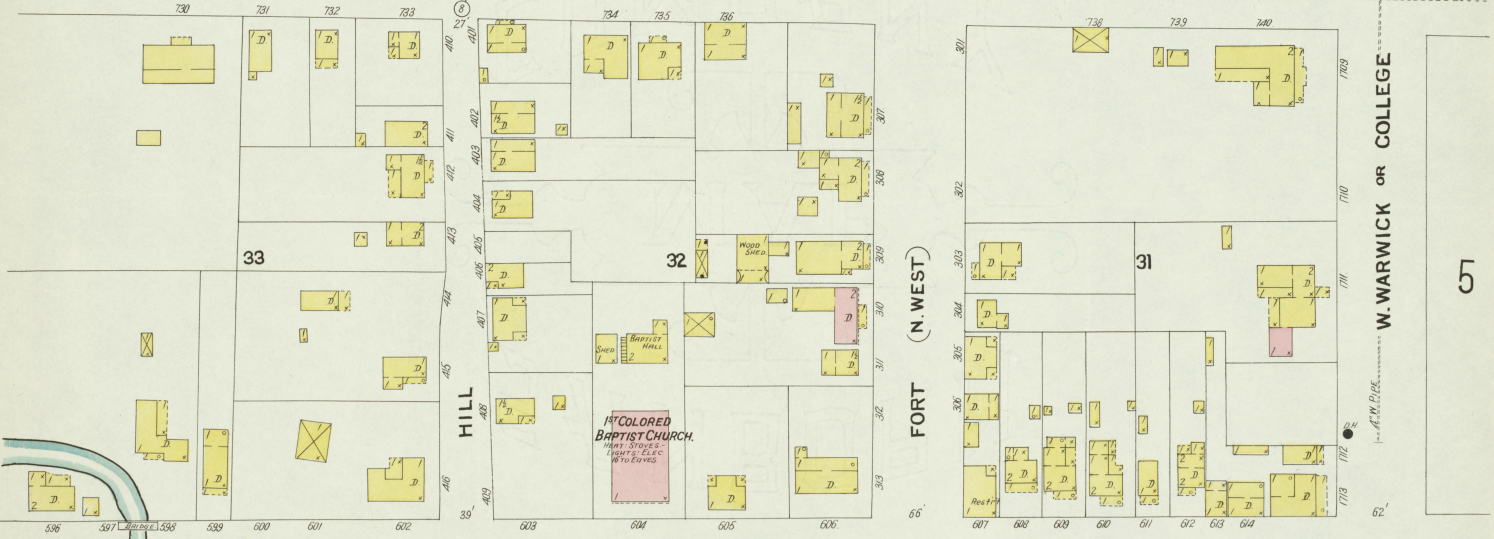
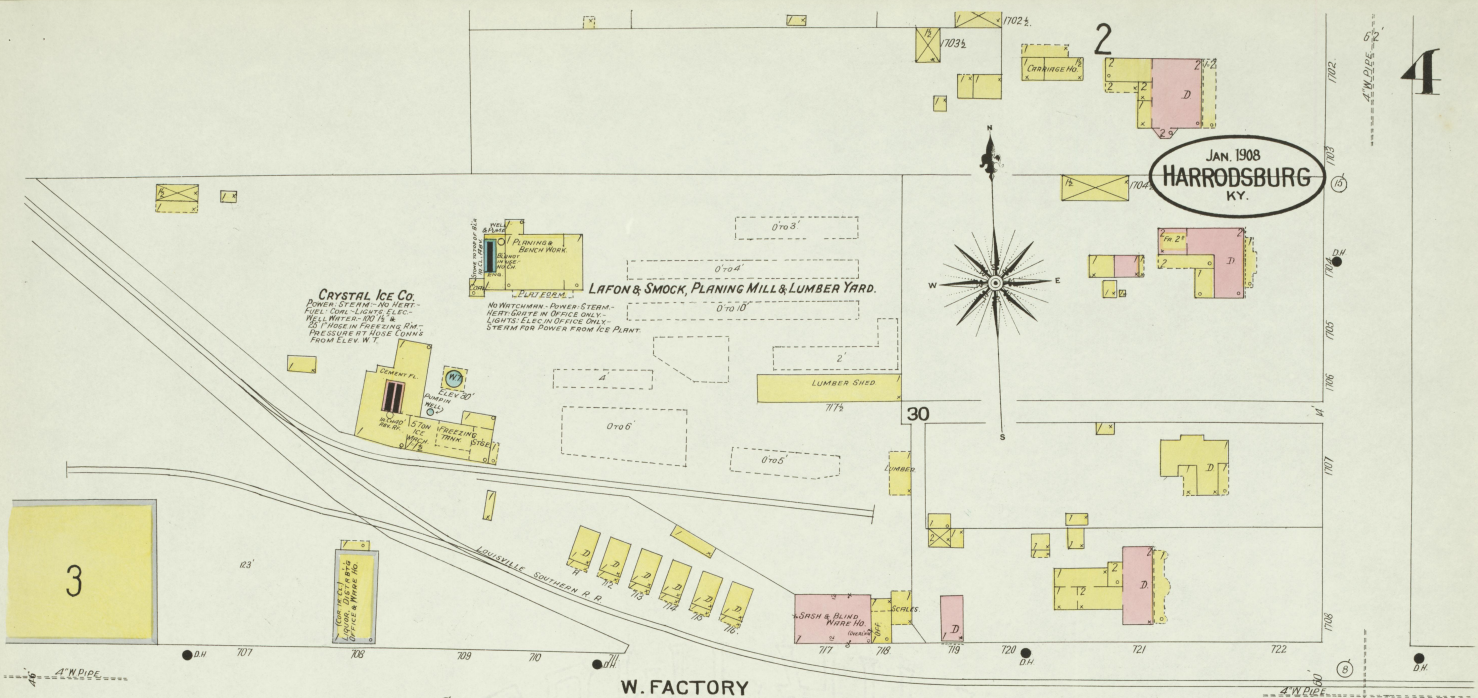
J. B. THOMPSON
Old Fort Spring Distillery.
Registered Distillery No. 63, 8th District Mercer County Ky.

OPERATED ABOUT 8 MONTHS OF YEAR.-
MASH CAPCY 500 BUSHELS PER DAY.-
SUGARING FIELD 4745 GALS PER EQUWELL.-
DAY AND NIGHT WATCHMAN, NO CLUCK-
POWER, STEAM, HEAT, STOKES IN YESTER AM, OIL &
BOTTLING HOT-FUELS, COAL, LUMBER, CLOSER, LUMBER, &
FINE PRILLS & BLS DISTILLED, STEAM DOUBLER.-



Map Edition 1, 11, 1908
Library of Congress

JAN 1908
HARRODSBURG
KY.





JAN. 1908
HARRODSBURG
KY.

5

34

35

W. FACTORY

E. FACTORY

4
N. WARWICK OR COLLEGE

HARRODSBURG ROLLER MILLS
H. C. SMITH & SONS

N. MAIN

N. GREENVILLE

6

HARRODSBURG ELECTRIC LIGHT PLANT

POWER STEAM
LIGHTS ELECTRIC
FUEL COND.
WATER FOR STEAM
25' HOIST

LAUNDRY

MODEL STEAM LAUNDRY

NO METALWORK
NO LIGHTS
WATER FROM WELLS
FUEL COND. LIGHT & POWER

W. WATER OR BROADWAY

E. WATER OR BROADWAY

5

WOOD YARD

N. CHILES

6

LIVERY

HARNESS

LIQUOR

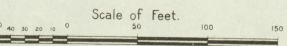
STORAGE

OFFICE

W. LEXINGTON

7

E. LEXINGTON



W. LEXINGTON

E. LEXINGTON

7

JAN. 1908
HARRDSBURG
KY.

N. GREENVILLE

E. WATER or BROADWAY

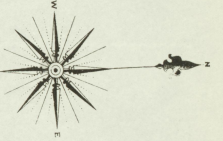
E. FACTORY

N. EAST

AV.

LITSEY

E. LEXINGTON

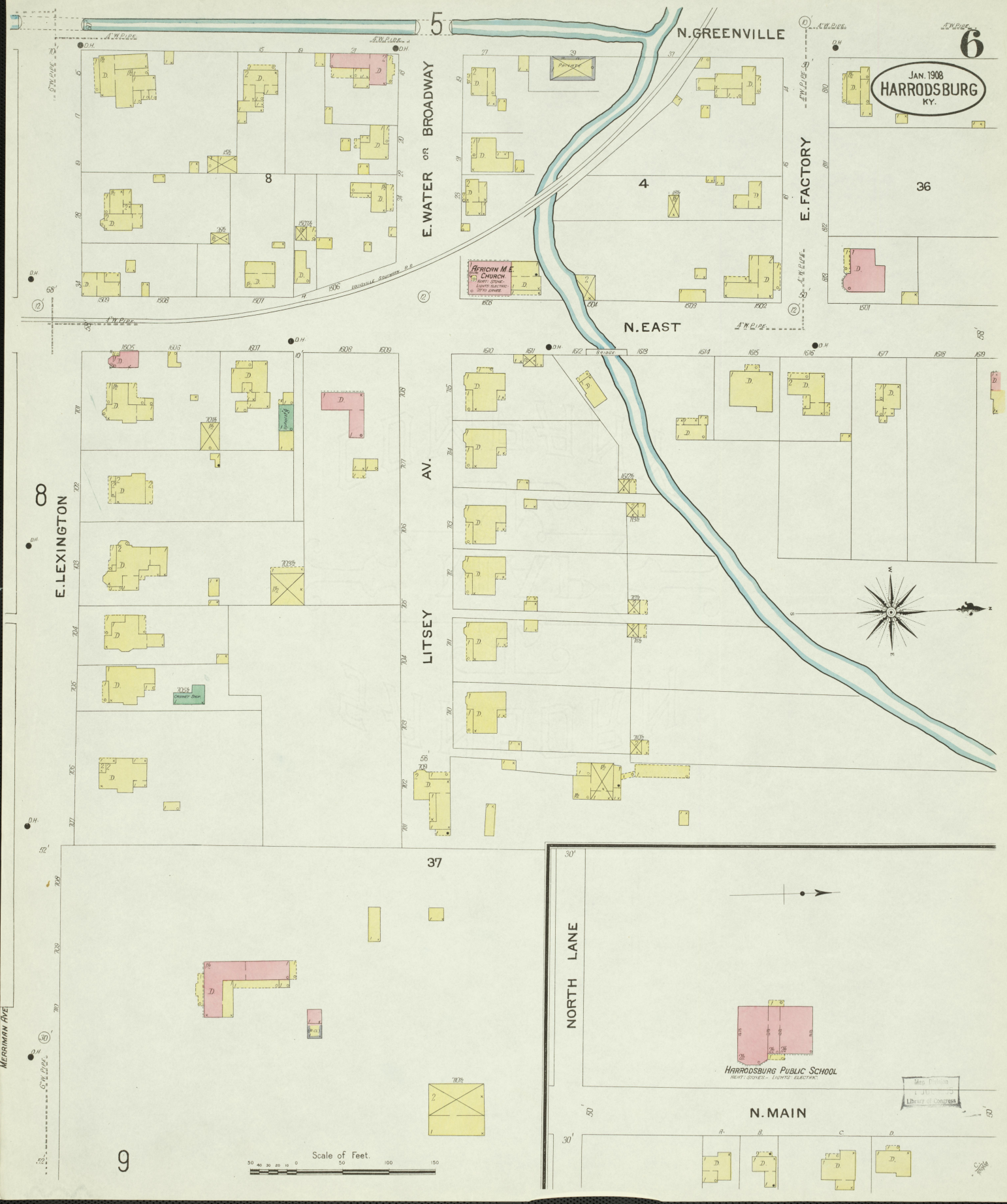
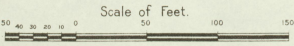


37

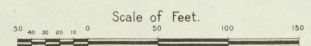
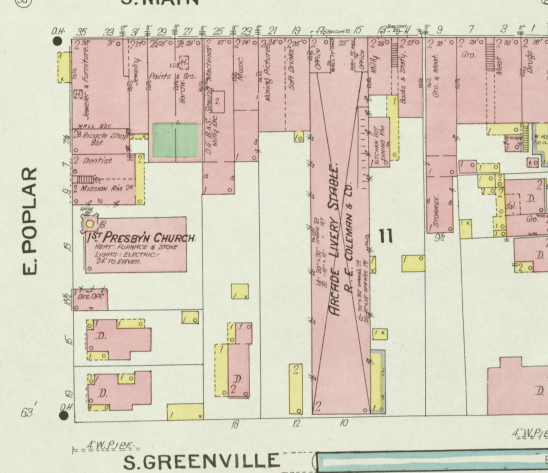
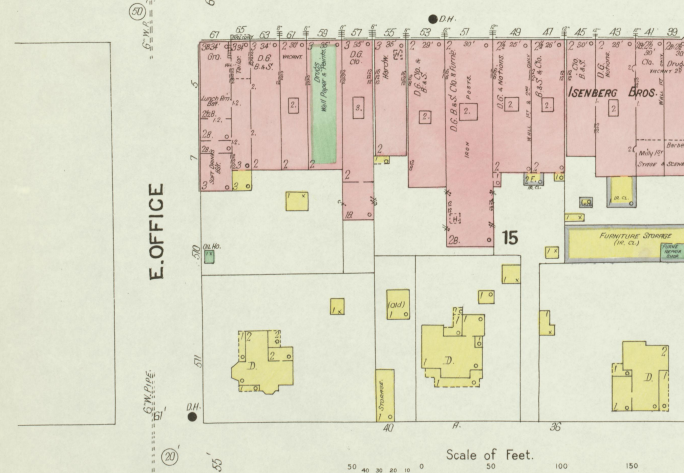
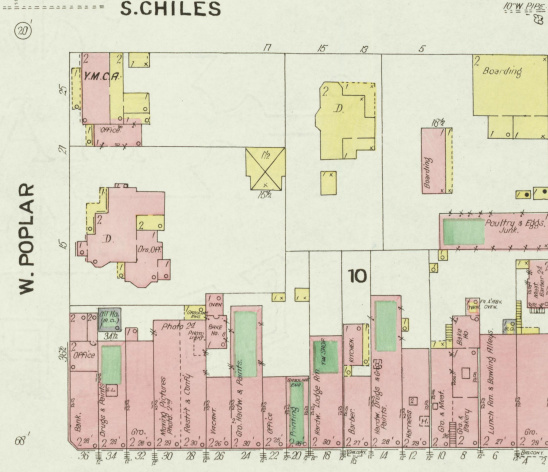
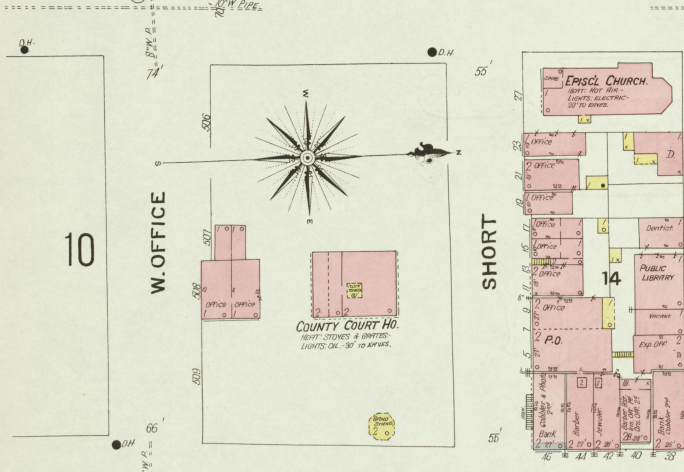
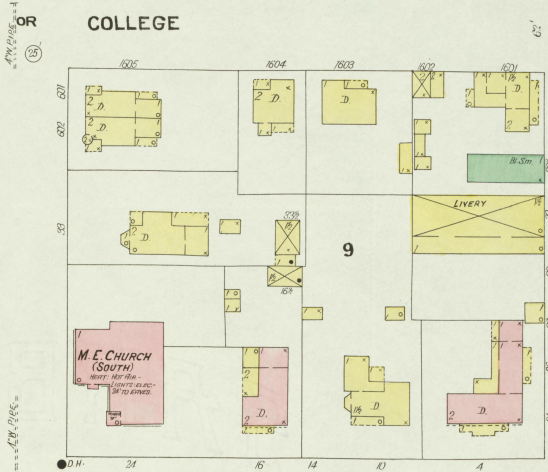
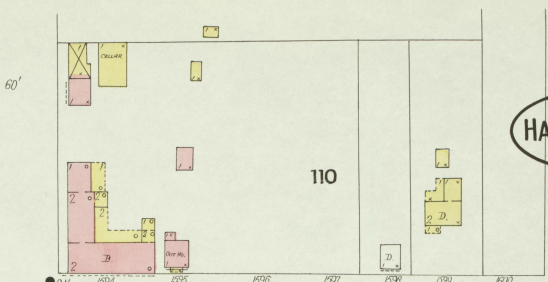
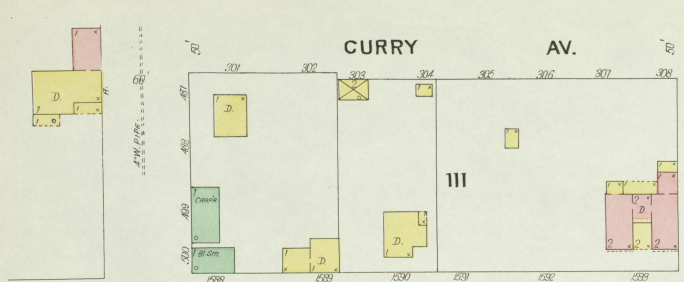
NORTH LANE

HARRDSBURG PUBLIC SCHOOL

N. MAIN

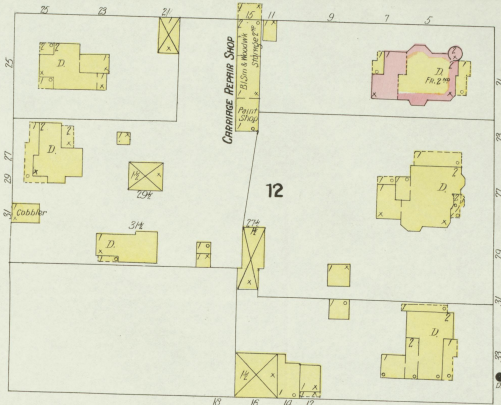


JAN. 1908
HARRODSBURG
KY.



Map drawn
11 JUN 1908
Library of Congress

S. GREENVILLE



E. POPLAR

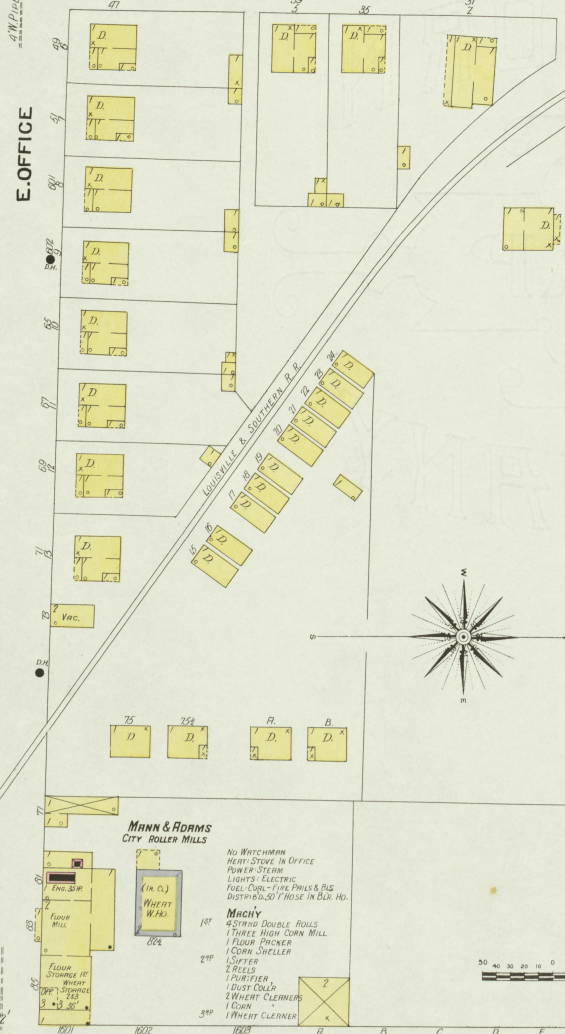
S. EAST

E. LEXINGTON

E. OFFICE

20

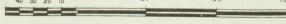
11



MANN & ADAMS
CITY ROLLER MILLS

- NO WATCHMAN
- HEAT STOVE IN OFFICE
- PUMP STEAM
- LIGHTS: ELECTRIC
- FUEL COAL-TYPE PILES & BLS
- DISTRIBUTION TROUSE IN BLDG. NO.
- MACHY
- 4 STAND DOUBLE ROLLS
- 1 THREE HIGH CORN MILL
- 1 FLOUR PUNCHER
- 1 CORN SHELLER
- 1 CRIBBER
- 2 REELS
- 1 PUMPER
- 1 DUST COLL.
- 2 WHEAT CLEANERS
- 1 CORN
- 1 WHEAT CLEANER

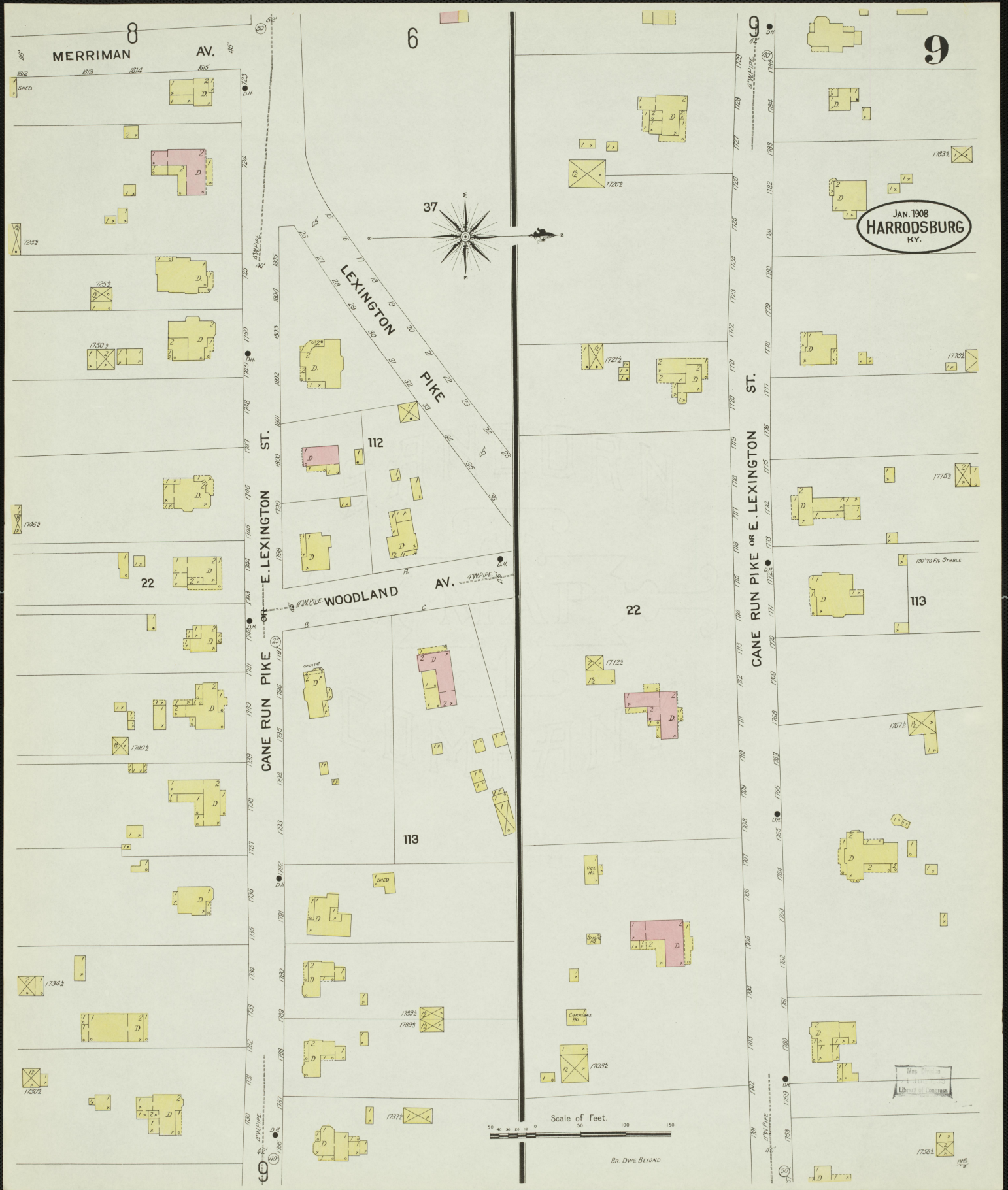
Scale of Feet.



MERRIMAN AV.

Map Division
JAN. 1908
Library of Congress

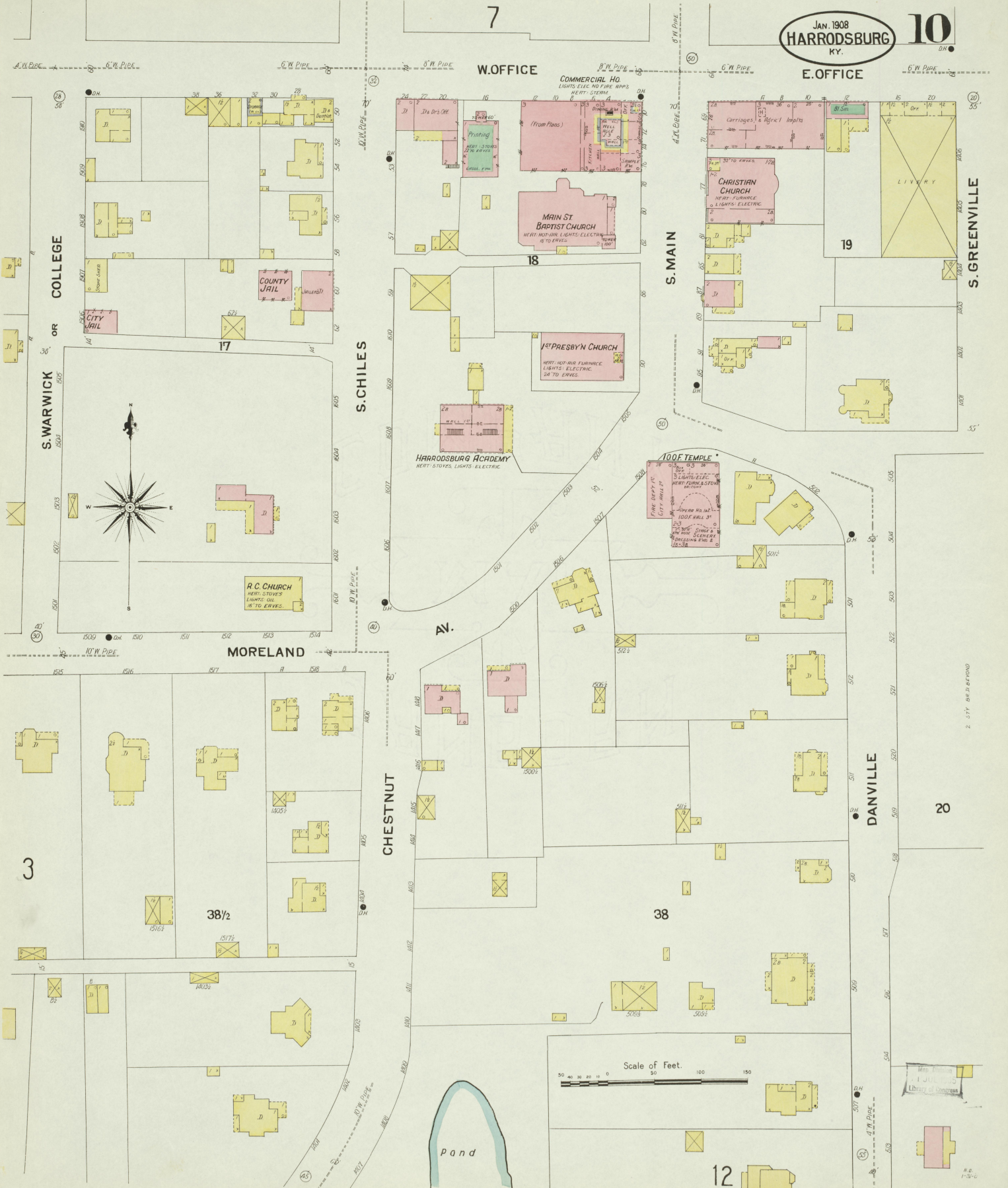
W.C. 11



JAN. 1908
HARRODSBURG
KY.

Scale of Feet.
50 100 150
Be. DWG. BRAND

Map Printed
by
Library of Congress



W. OFFICE

E. OFFICE

COLLEGE

S. WARWICK

S. CHILCS

S. MAIN

S. GREENVILLE

MORELAND

CHESTNUT

DANVILLE

Pond

Scale of Feet.

Miss William
L. J. ...
Library of Congress

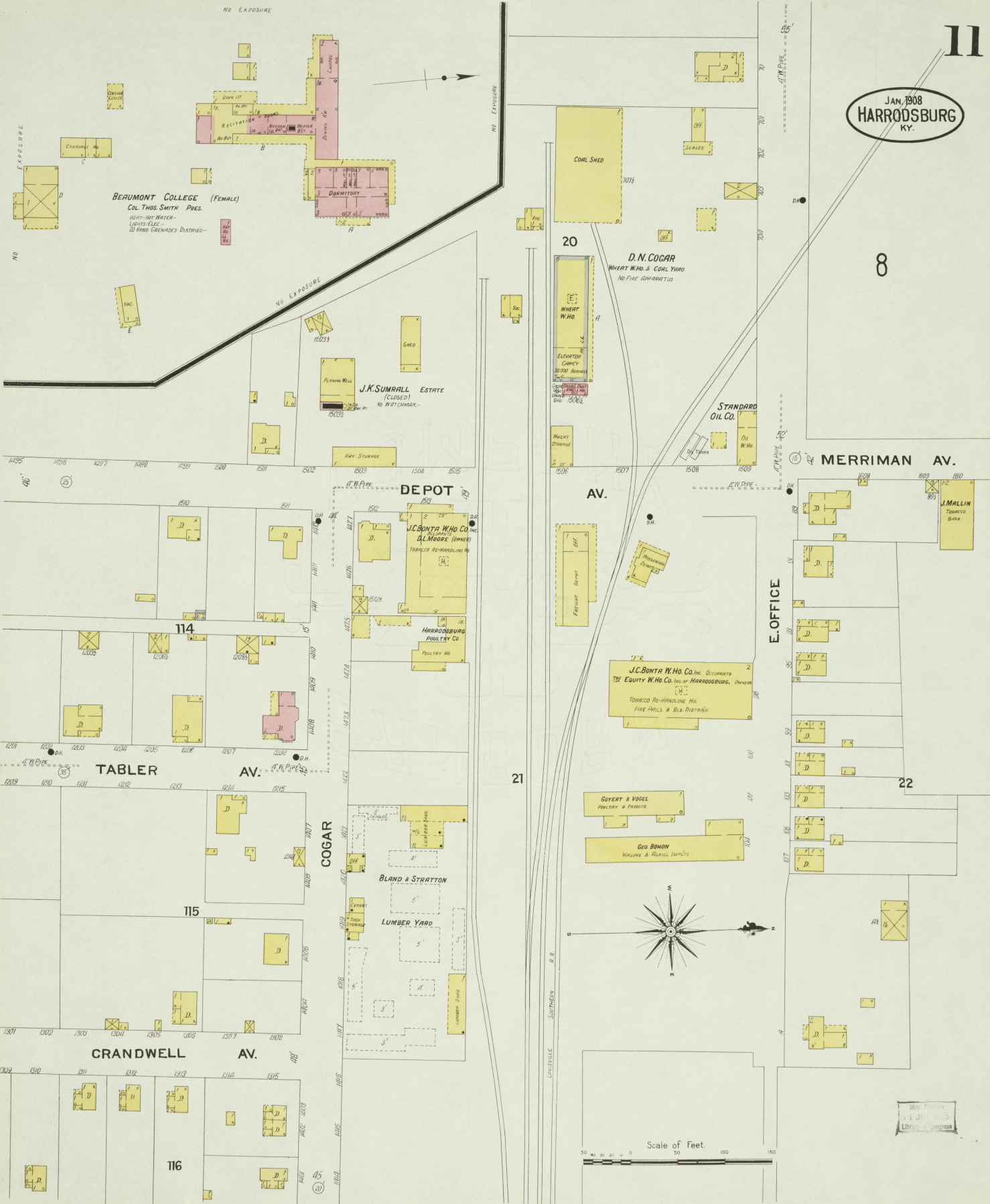
2. CITY ENGINEERING

1-3-08

JAN. 1908
HARRDSBURG
KY.

8

11



BEAUMONT COLLEGE (FEMALE)
COL. THOS. SMITH PRES.
HEAT-HOT WATER
LIGHTS-ELEC.
20 HAND GRENADES DISTRIBUTED

J.K. SUMRALL ESTATE
(CLOSED)
NO WATCHMAN

D.N. COGAR
WHEAT W.H.O. & COAL YARD
NO FIRE APPARATUS

STANDARD OIL CO.
OIL W.H.O.

DEPOT
J.C. BANTA W.H.O. CO. INC.
OLMROSE (OWNER)
TOBACCO RE-HANDLING HO.

HARRDSBURG POULTRY CO.
POULTRY HO.

J.C. BANTA W.H.O. CO. INC. OCCUPANTS
THE EQUITY W.H.O. CO. INC. OF HARRDSBURG, OWNERS
TOBACCO RE-HANDLING HO.
FIRE PAILS & BLE. DISTRIBUTED

GOVERT & VOSEL
POULTRY & FEEDS

Geo BONON
WIGGINS & FERRIS SUPPLYS

BLAND & STRATTON
LUMBER YARD

E. OFFICE

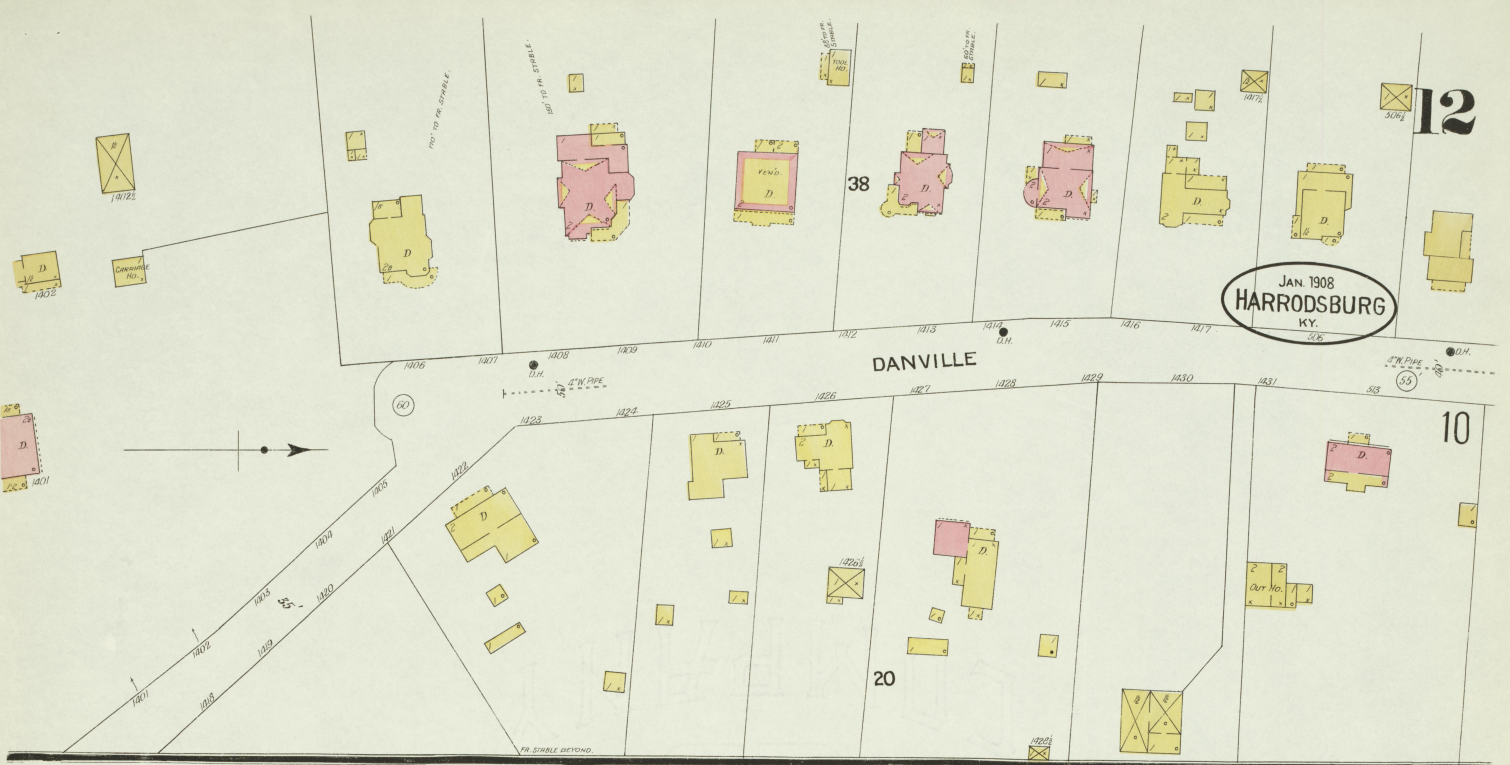
TABLER AV.

COGAR AV.

GRANDWELL AV.

Scale of Feet.

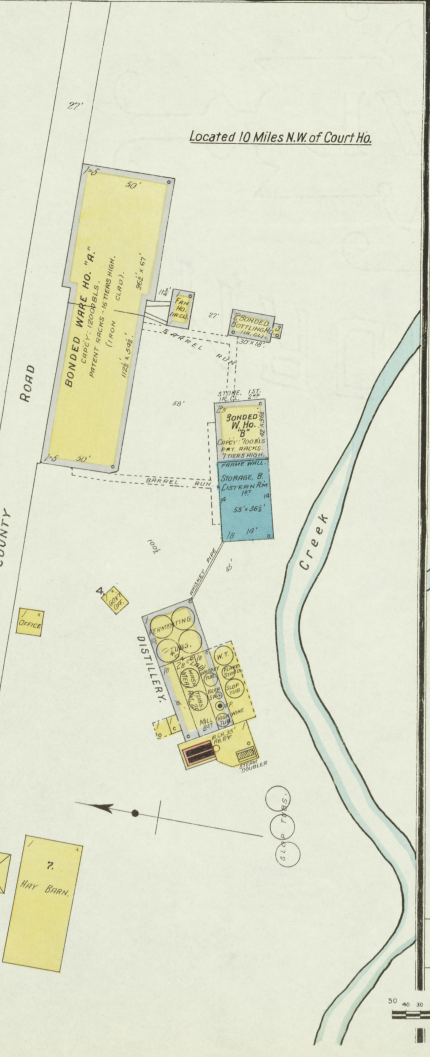
MISS. PAID
JULY 1935
Library of Congress



(THE) D.L. MOORE DISTILLERY CO.,
 FORMERLY D. L. MOORE, JR.
 REGISTERED DISTILLERY NO. 118,
 8TH DIST. MERCER CO., KY.
 Product: Bourbon and Rye
 Sour Mash Whiskey.

RUNS SIX MONTHS OF YEAR.
 MASH CAPACITY: 150 BU. PER DAY.
 AVERAGE YIELD: 4 GALS. PER BU.

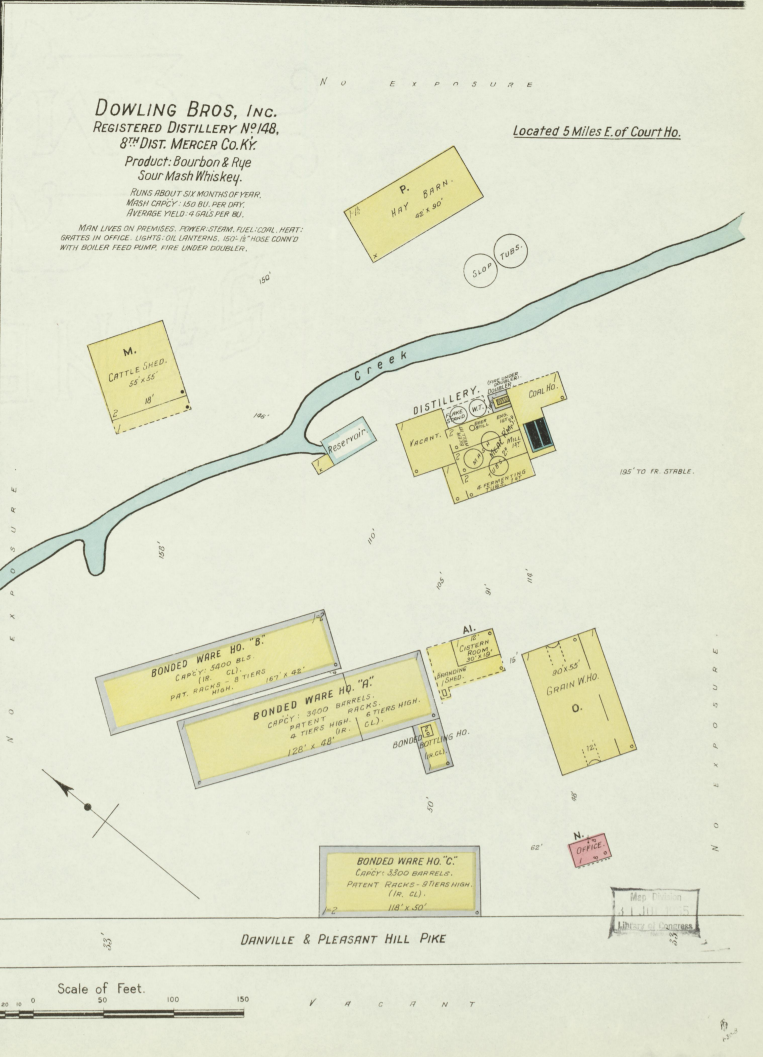
NO WATCHMAN. HEAT INDIRECT STEAM IN WARE HO. "A".
 STOVES IN OFFICE. POWER: STEAM. LIGHTS: OIL LANTERNS. WATER
 FROM SPRING. 100-12" HOSE. COIN. WITH SMALL FORCE PUMP.
 STEAM DOUBLER.



DOWLING BROS., Inc.
 REGISTERED DISTILLERY NO. 148,
 8TH DIST. MERCER CO. KY.
 Product: Bourbon & Rye
 Sour Mash Whiskey.

RUNS ABOUT SIX MONTHS OF YEAR.
 MASH CAPACITY: 150 BU. PER DAY.
 AVERAGE YIELD: 4 GALS. PER BU.

MAN LIVES IN PREMISES. POWER: STEAM. FUEL: COAL. HEAT:
 GRATES IN OFFICE. LIGHTS: OIL LANTERNS. 100-12" HOSE COIN.
 WITH BOILER FEED PUMP. FIRE UNDER DOUBLER.



PT BURGIN Located 4 Miles E. of Court Ho.

JAN. 1908 HARRODSBURG KY.



BURGIN ROLLER MILLS
GILMAN & TULLY PROPRIETORS

FLOUR MILL
CAPACITY 250 BBL PER DAY
NO WATCHMAN, POWER, GASOLINE ENG.
HEAT STOVE IN OFFICE
LENS OIL WHEELS
WATER BBL & TWO TIRE PAIRS
EACH FLOOR

MACHS
1ST 3 STAND DOUBLE ROLLS
1 THREE HIGH GUM MILL
1 CASE SIFTER
1 FLOUR TRUCKER
1 LIGHT CITY STEAM GENERATOR
1 WHEAT STEAMER
1 CORN CRUSHER
1 WHEAT SEPARATOR
1 CORN
1 WHEAT SCOURER
7 ROUND BELLS
1 SMITH PULVIT
1 MEAL BOLT

FLOUR MILL
WHEAT
M.E. CHURCH

Map of Harrodsburg, KY.
JULY 1895
Library of Congress

JAN 1908
HARRDSBURG
KY.

RT BURGIN
Located 4 Miles E of
COURT Hs.

DRY MOORE

J. T. FREEMAN

MERCER COUNTY FAIR ASSOCIATION
HARRDSBURG KY.

SCALE 100 FT TO AN INCH



J. ALLEN SMITH & CO
REAL ESTATE & BUSINESS BROKERS

MEREDITH AV.

WALNUT

SYCAMORE

MAIN

MILL

COURT

Scale of Feet.
0 50 100 150

BURGIN PUBLIC SCHOOL

ABOUT 500 TO 750 FEET
SEE THIS MAP

MAIN

NO EXPOSURE