

Nov. 1928
WEST POINT
KY.

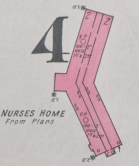
Scale of Feet
0 50 100 150
Copyright 1928 by the Seaboard Map Co.

NO NAME

4

Nov. 1928
WEST POINT
KY.

(3829)



WAVERLY HILLS

BOARD OF TUBERCULOSIS HOSPITAL

NIGHT WATCHMAN, APPROVED CLOCK, HEAT, STEAM, LIGHTS, ELEC.
TALL CHIMNEY, WATER SUPPLY FROM 3 WELLS PUMPED TO 10,000 GALS.
WATER TANK, ELEVATED TO AND 1-20,000 GALS WATER TANK, ELEV. 30'.
9" x 3' DEEP WELLS PUMPS, 1-40 GALS CHIM. TANK WITH 50'-36" RUBBER HD.

Located 11 Miles N.E. of West Point, in Jefferson County

KOSMOS PORTLAND CEMENT CO.

Located at Kosmosdale, Jefferson County, 3 1/4 Miles N.E. of West Point

CLAY SHED

NIGHT WATCHMAN, APPROVED CLOCK, HEAT, STEAM, LIGHTS & POWER ELEC. I.E.P.
FULL CONC. WELLS FROM UNDER LENS. REST 100' WEST OF CONC. HIGHWAY
WITH 1-10,000 GAL. P.M. RILL CHIMNEY ELEC. CENTRIFUGAL PUMP TO
UNDERGROUND RECEIVING BY POWER HD. CAPACITY OF RESERVOIR APPROXIMATELY
30,000 GALS. TRANCE DIRECT INTO FIRE MAINS WITH WORTHINGTON DUPLEX
STEAM PUMP, CAP. 1000 GALS P.M. BESTE TANK IS FILLED FROM 1' DEEP WELLS
WITH 2 CONC. ELEC. PUMPS, CAP. 100 GALS P.M. EACH. THIS TANK CAN BE USED
IN CASE OF FIRE. HYD. & HOSE AS SHOWN. 200' x 24' HOSE.
NO INFORMATION AS TO WATER MAINS AVAILABLE.

NOTE - BUILDING CONSTRUCTION
ALL BUILDINGS ARE CONCRETE BLUE EXCEPT THOSE NOTED DIFFERENT
BY STEEL FRAMES METAL LATH & FROM 1" TO 2" OF CONC. ON OUTSIDE

