



THE COLLEGE GAME

University Archives
Margaret Living Library - North
University

OFFICIAL PROGRAM

50c Est. Price .47
Tax03

Kentucky vs Missouri

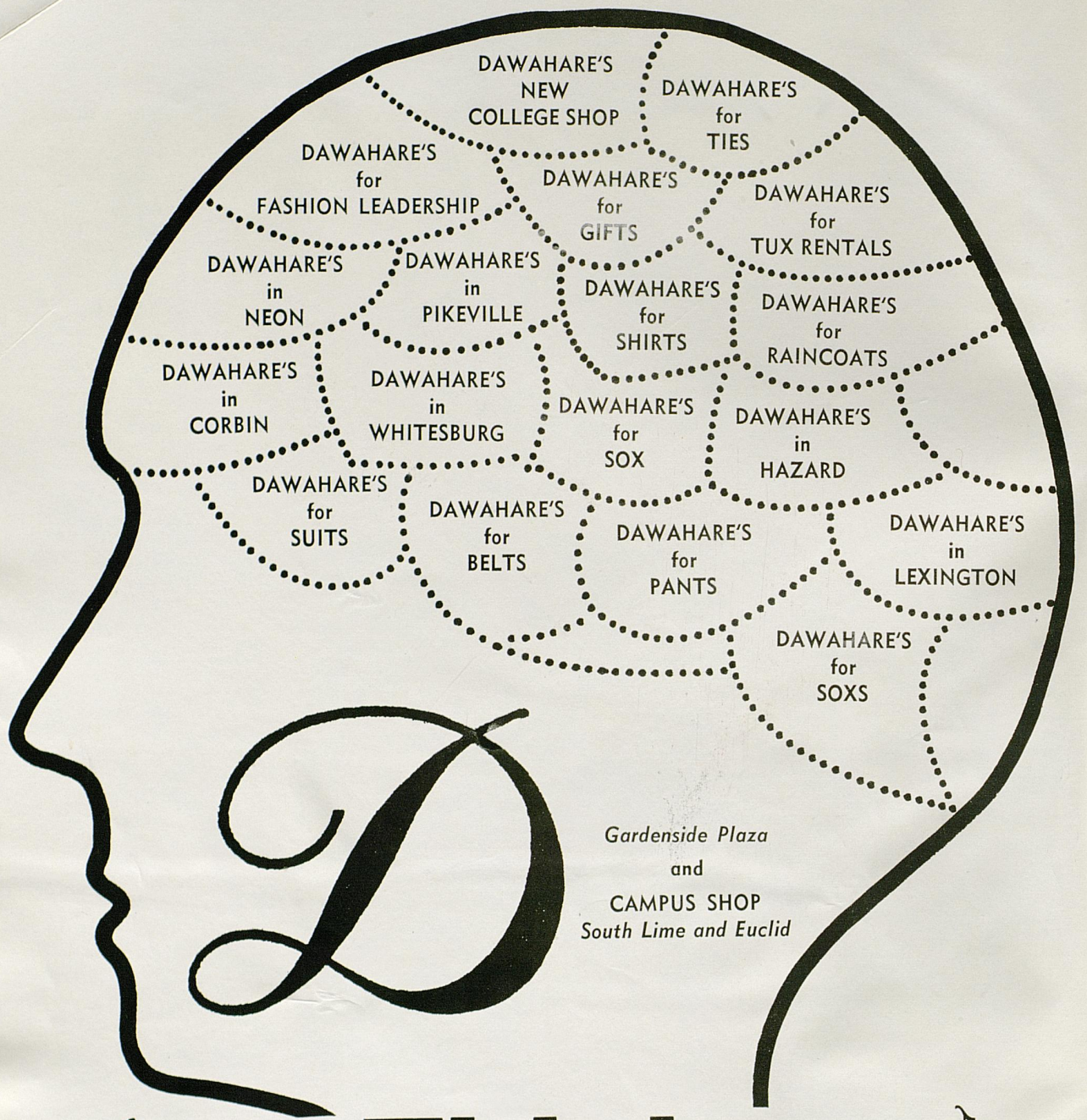
SEPTEMBER 21, 1968 • STOLL FIELD

SCHEDULE

- *SEPT. 21 MISSOURI
- SEPT. 28 MISSISSIPPI
- *OCT. 5 AUBURN
- *OCT. 12 OREGON ST.
- OCT. 19 L. S. U.
- *OCT. 26 GEORGIA
- NOV. 2 W. VIRGINIA
- *NOV. 9 ... VANDERBILT
- *NOV. 16 FLORIDA
- NOV. 23 TENNESSEE
- * Home Games



STADIUM 28
2888



DAWAHARE'S
NEW
COLLEGE SHOP

DAWAHARE'S
for
TIES

DAWAHARE'S
for
FASHION LEADERSHIP

DAWAHARE'S
for
GIFTS

DAWAHARE'S
for
TUX RENTALS

DAWAHARE'S
in
NEON

DAWAHARE'S
in
PIKEVILLE

DAWAHARE'S
for
SHIRTS

DAWAHARE'S
for
RAINCOATS

DAWAHARE'S
in
CORBIN

DAWAHARE'S
in
WHITESBURG

DAWAHARE'S
for
SOX

DAWAHARE'S
in
HAZARD

DAWAHARE'S
for
SUITS

DAWAHARE'S
for
BELTS

DAWAHARE'S
for
PANTS

DAWAHARE'S
in
LEXINGTON

DAWAHARE'S
for
SOXS

D

*Gardenside Plaza
and
CAMPUS SHOP
South Lime and Euclid*

**Think
Dawahare's**

Buy U.S. Savings Bonds,



Always Shop Purcell's FOR **NUNN-BUSH**

"AMERICA'S GREATEST SHOES"

NUNN BUSH shoes are both Handsome in Styling . . .
Sturdy in Design. Shown are just two of the popular
styles available.



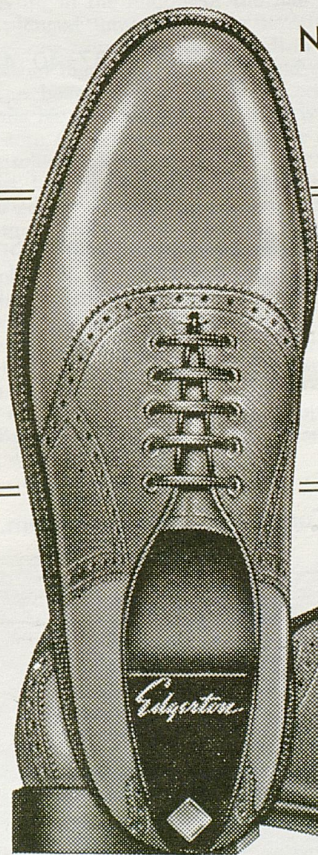
NUNN BUSH WING-TIP

- DOUBLE LEATHER SOLE
- LONG WING BROGUE
- FULL LEATHER LINING
- BLACK or BROWN GRAIN LEATHER

**NUNN
BUSH**

NUNN-BUSH AND NUNN-BUSH EDGERTON

Priced from **\$1795** To **\$3795**



SADDLE OXFORD

Edgerton by
**NUNN
BUSH**

- TAN AND BLACK
- BROWN AND BLACK

Purcell's

SHOE CENTER
MAIN FLOOR



U.S. SAVINGS BONDS
NEW FREEDOM SHARES

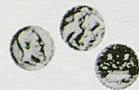
SHOP MONDAY AND FRIDAY NIGHTS UNTIL 9:00!

OFFICIAL WATCH FOR THIS GAME



LONGINES THE WORLD'S MOST HONORED WATCH®

10 world's fair grand prizes
28 gold medals



Longines watches are recognized as OFFICIAL for timing world championships and Olympic sports in all fields throughout the world.



Longines Ultra-Chron #8205, automatic with calendar, \$175.
Other Ultra-Chron Models, \$115 to \$595.

the fabulous, new LONGINES ULTRA-CHRON®

Guaranteed Accurate To A Minute A Month*

The ultimate personal chronometer, guaranteed accurate to a minute a month—a mean average of 2 seconds per day. Ultra-Chron tells the date, hour, minute, second. Never needs batteries. Winds automatically while you wear it. All Proof® construction defeats water, dust, shock, magnetism. At Longines-Wittnauer Franchised Jewelers, coast-to-coast.

*Your Longines-Wittnauer Franchised Jeweler will adjust your Ultra-Chron to this accuracy, if necessary. Guarantee is for one year.

LONGINES-WITTNAUER WATCH CO.
NEW YORK • MONTREAL • GENEVA
Maker of Watches Of The Highest Character
For Over A Century

OFFICIAL UK FOOTBALL PROGRAM

CONTENTS

	Page
Game Story	3
Governor Nunn	6
President Kirwan	7
Athletics Director Lancaster	9
Athletics At Kentucky	10
Cheerleaders	12
Varsity Schedule and Scores	12
Student Athletic Committee	13
Coaching Staff	15
Head Coach Bradshaw	16
Advance Schedules	17
Missouri Administration	19
Kentucky Player Pictures	20, 24, 33, 37, 40, 44, 50
Missouri Player Pictures	22, 39
Statistically Speaking	23
Missouri Numerical Roster	26
Lineups	Center Spread
Kentucky Numerical Roster	31
Depth Chart	32
What Opponents Are Doing	34
UK Freshman Roster	35
Post Game Party Gets Top Rating	45
UK Broadens Service to State in Community College System..	54
Kentucky Basketball	56

OFFICIAL 1968 SOUVENIR FOOTBALL PROGRAM

Published by U.K. Athletics Association

Harry C. Lancaster, Acting Director of Athletics

Edited by Ken Kuhn

Director of Sports Information

Represented for National Advertising by

Spencer Advertising, Inc.

271 Madison Avenue, New York, N. Y.

Wildcat Gridiron News

KENTUCKY vs. MISSOURI

Charlie Bradshaw's Wildcats make their 1968 debut this afternoon against Dan Devine's Missouri Tigers, one of 10 foes on what many experts call the toughest football schedule in the nation.

As Bradshaw and his squad enter the season on an optimistic note, fans hope for a repeat of the only other Kentucky-"Old Mizzou" battle.

That was in 1965, when the Wildcats upset the Tigers, 7-0, in sweltering 98-degree weather in Memorial Stadium in Columbia.

The victory, engineered by a 36-yard Rick Norton to Larry Seiple pass and sterling Wildcat defensive work, set the tone for a fine season (6-4) for Bradshaw's forces.

Missouri also fared well, finishing with a 7-2-1 season record and a 20-18 victory over Florida in the Sugar Bowl.

The big defensive effort of the Wildcat-Tiger battle came in the fourth quarter, after the Tigers had advanced to the three-yard line behind the fine running of Johnny Roland and plunging of Barry Lischner.

On first down, third string quarterback Gary Kombrink was stopped for a half-yard gain. Lischner made one and then was hit in the middle of the line by seven Wildcats. Roland plunged into touchdown territory, but Kentucky's Mike McGraw came up with the ball in the end zone.

Heroes of that game have departed collegiate ranks, but both teams boast a host of name players.

Playing his final year as a Wildcat is Dicky Lyons, 1967 Southeastern Conference scoring leader and pre-season All-America selection.

Lyons has shared tailback duties this fall with Dick Beard, a powerful junior from Altoona, Pa.

Exciting battles have also been waged at fullback and quarterback positions. Raynard Makin, a big sophomore from Hobbs, N. M., has fought hard against such competition as Jim Mitchell and Roger Gann, but seems to have the inside track at fullback. Gann, playing tailback last season, was the squad's leading ground gainer before receiving a knee injury in the LSU game. He can be used as either fullback or tailback.

The quarterback position is a toss-up between letterman David Bair and sophomore Stan Forston, who was out last

season with a knee injury. Joe Jacobs is back for his second starting season at wingback. He was second last season to classmate Phil Thompson in the pass-receiving department.

The Wildcats list another strong suit in defense, where senior Jeff Van Note and junior Dick Palmer form one of the best end combinations in the South. The interior line is staffed by such familiar names as George Katzenbach, Doyle King, Marty Joyce and Mike Boulware while promising sophomore Dave Roller battles junior Steve Koon for the noseguard position.

The defensive backfield features such veterans as Al Phaneuf, Phil Greer and Chuck Blackburn along with sophs David Hunter, Al Godwin and Jack Mathews.

Gary Shahid is back for his second year at linebacker, with sophs Wilbur Hackett and Frank Rucks battling for a starting berth.

The offensive line features seniors Dennis Drinnen, Lois Wolf, Kenny Wood, and Bob Freibert.

Missouri will counter with some established regulars and some highly-touted junior college transfers.

Terry McMillan, a junior college product, emerged in spring practice as a good quarterback to go with veteran Garnett Phelps. Addition of three other junior college running backs gives the Tigers considerable backfield depth that was lacking last year.

Junior Jon Stagers and rookie fullback James Harrison, a 240-pounder, should feature the Tiger attack out of the new "T" formation.

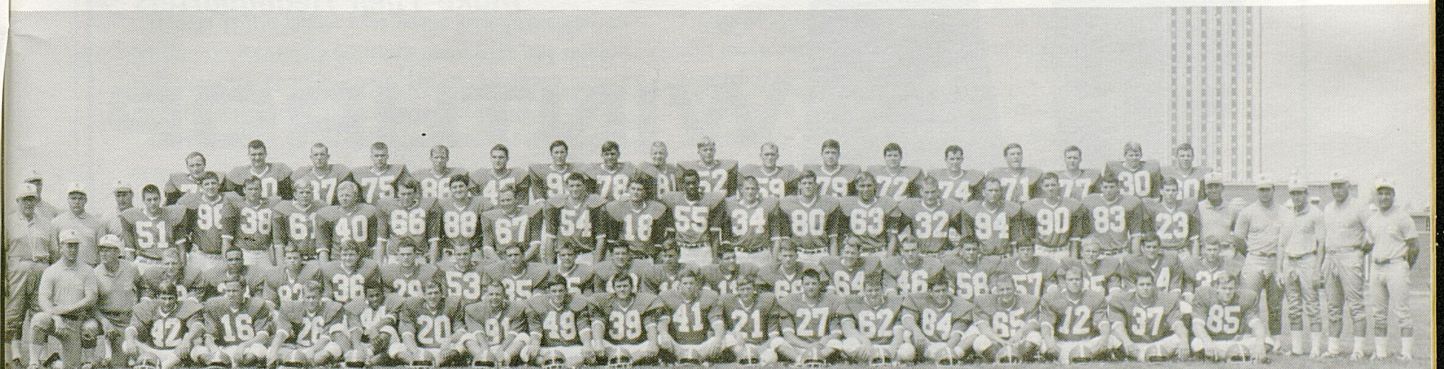
The Missouri defense, second nationally in '67, returns seven starters, led by Roger Wehrli, an All-America aspirant, and ends Elmer Benhardt and Bill Schmitt, and guard Carl Garber.

Offense line leaders should be Jim Anderson at tackle, Chuck Weber at split end and Con Rees, center. All are seniors.

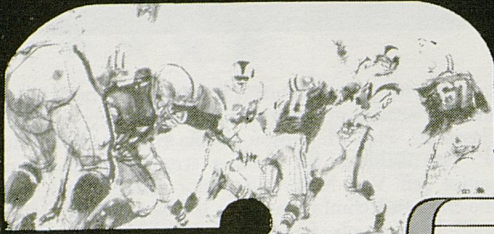
The Tigers graduated Lischner and Kombrink, but the 1968 offense could be more versatile, featuring a passing attack that has been subpar the past two years.

The Wildcats hope to keep intact their record against Big Eight teams. In addition to the 7-0 victory over Missouri, they have defeated Oklahoma, 13-7, in the 1951 Sugar Bowl, and Kansas State, 21-8, in Lexington, 1961.

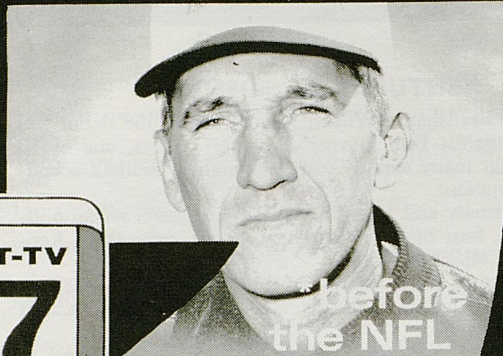
1968 WILDCATS



EVERY SUNDAY ON:



**NFL
Football**
And The
**Charlie
Bradshaw**
Show *



before
the NFL
game with
color films of
the Wildcats & a
preview of their
next opponent.

*** BROUGHT TO YOU BY : KENTUCKY CENTRAL LIFE INSURANCE COMPANY**



wenneker's

153-155 EAST MAIN STREET AND TURFLAND MALL

Where Sports Celebrities

Make Their Headquarters

WINTHROP

Save Money on Nationally Advertised Shoes
Prices You Can Afford



They never heard of George Adams.

When this picture was taken on the boardwalk at Atlantic City in 1922, there just weren't any people around doing the kind of things George Adams does.

And even today, George Adams does a job and performs a function that is pretty rare in most life insurance companies

George is the fellow who heaps loving care and attention on Kentucky Central's more than two million policyowners coast-to-coast. He's a key man in our modern concept of policyowner relations.

George not only has an organization of many dedicated co-workers (who privately admit they try to outdo his friendliness) but he has a nationwide WATS

(Wide Area Telephone Service) at his disposal 18 hours a day. With several clicks of the dial, he or one of his staff can be in the home of some faraway policyowner, talking about the weather, making friends . . . and giving personal service and counsel on any number of insurance matters.

George Adams is just another example why more and more people prefer to buy life insurance protection from Kentucky Central.

Thanks to better service ideas, we're now one of the nation's fastest growing life insurance companies, with more than \$1,600,000,000 of our life insurance now owned by the American public.

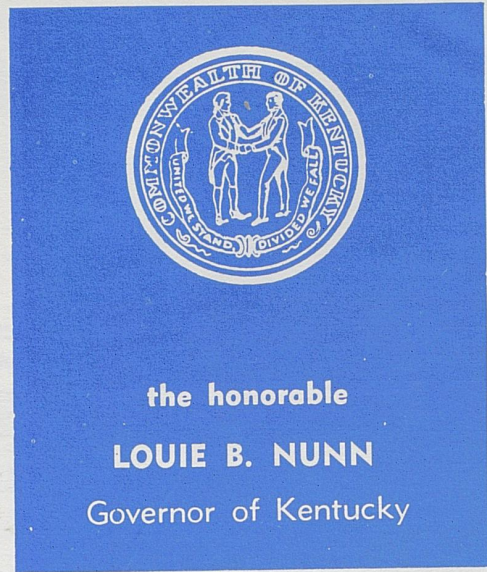
Kentucky Central Life Insurance Company

FOUNDED 1902/NATIONAL HEADQUARTERS, LEXINGTON/NOW SERVING 36 STATES

Buy U.S. Savings Bonds

STAR-SPANGLED SAVINGS PLAN
FOR ALL AMERICANS





Governor Boosts Wildcat Gridders . . .

Louie B. Nunn, an architect of impressive changes and progress since his inauguration less than a year ago as the 56th Governor of Kentucky, believes strongly that self-reliance, pride and courage are the by-products of intercollegiate athletics.

Chairman of the Board of Trustees at the University of Kentucky, Governor Nunn leads Kentuckians in support of a football program to match the dramatic recent progress which has touched every part of the UK community.

An avid sportsman and spectator, the Governor's scarce moments of relaxation during the Fall are divided among hunting, fishing and football.

Governor Nunn's deep concern for education was reflected in his budget, which contained record appropriations for every level from grade school to vocational schools, colleges and universities.

Governor Nunn, 44, is a native of Barren County. He attended Bowling Green Business University, the University of Cincinnati and the University of Louisville, where he earned a law degree in 1950.

A successful attorney, Governor Nunn has served in both executive and judicial positions. The third Republican this century to be elected Governor in Kentucky formerly served as a county judge and city attorney.



A. D. KIRWAN
Interim President
University of Kentucky



University's President Knows Value of An Athletic Program . . .

Meet UK's interim president, Dr. A. D. "Ab" Kirwan, whose remarkable career has brought a distinguished teaching influence to both the classroom and the playing field. Also, he is no stranger to administrative problems in either sports or academics.

In 1947, Dr. Kirwan was named dean of men at UK, and in 1959 was asked to serve as dean of the Graduate School. After several years in each of these posts he requested to be relieved of his administrative duties so that he could devote full time to his favored profession—teaching and studying history.

He received his A.B. degree from UK in 1926, a master's degree from the University of Louisville in 1944 and was awarded the doctorate by Duke University in 1947. He also holds an L.L.B. degree from the Jefferson School of Law.

During his student days at UK, Dr. Kirwan was an outstanding athlete doubling as a half-back and end, and captained the Wildcat football squad in his senior year. In the late 'twenties

and early 'thirties he returned to his home town to serve as teacher and coach successively at both Louisville Male and Manual High Schools. In 1931 he was married to Miss Elizabeth Lewis Heil.

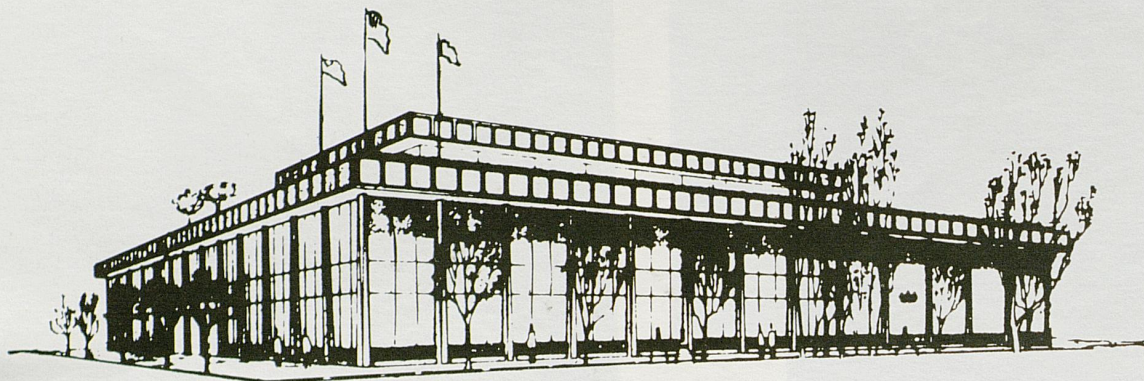
Then in 1938, "Ab" Kirwan came back to his alma mater as head football coach, and in his six seasons as the second Kentucky graduate ever to hold the coaching job the Wildcats compiled a record of 24 wins, 28 losses and four ties.

He quit the gridiron voluntarily early in 1945 to teach in the University's Department of History.

Dr. Kirwan is widely recognized for his work in Civil War history.

Dr. Kirwan has held numerous positions in both the Southeastern Conference and the NCAA, serving as chairman of the Infractions Committee of the NCAA, and as a member of the Executive Committee of the Southeastern Conference.

A Great Football Stadium?



Great? Yes! A Football Stadium? Not exactly . . . Actually it's the new \$5.5 million WHAS building. But when the Wildcats take to the field, WHAS goes into action. Using its new and sophisticated equipment, powerful 50,000-watt signal and experienced technicians, WHAS will carry the thrill and excitement of every play clearer than ever before. And WHAS Sports Director Cawood Ledford will describe all the action with Jack Koch providing the color.

For the best in U of K Football, tune the GOING SOUND of SPORTS on WHAS 840 Radio. All games are sponsored by TEXACO and EAST KENTUCKY Rural Electric Co-operatives. Also hear Cawood with opponents' records, histories and rivalries in the ten-minute Preview sponsored by JERRY'S Drive-In Restaurants and stay tuned for the five minute POST GAME SCOREBOARD sponsored by PHILIP MORRIS.


WHAS
840
The GOING SOUND of Sports





HARRY C. LANCASTER

Acting Director
of Athletics
University of Kentucky



The appointment of Harry C. Lancaster as acting director of athletics of the University of Kentucky effective Sept. 1, was hailed in athletic, academic, alumni and lay circles as a most appropriate move, as well as a just and fitting recognition and reward for a person who has given more than a quarter century of dedicated service to the University.

Furthermore, there was no doubt that Lancaster was fully capable of filling the vacancy left by the death Dec. 10, 1967 of Bernie A. Shively.

Lancaster picked up the reins of administrative leadership with ease, thanks to the respect of colleagues, players, associates and persons with whom he has come in contact during a varied and productive career of coaching and teaching. In fact, the appointment gave him an opportunity to expand beyond his nationally known role of assistant to basketball's winningest coach Adolph Rupp.

The Rupp-Lancaster association, begun after the latter was discharged from the U.S. Navy as a lieutenant (s.g.) in 1946, has been one of mutual respect and harmony. Rupp made Lancaster a full assistant in 1948. During the two previous years, the youthful Navy veteran had busied himself by serving as part-time assistant

while carrying on teaching duties and studying for a master's degree.

The dual duties, plus extra studies, were second nature to Lancaster, who had served as assistant football and basketball coach at Georgetown College (1932-33) and Paris High School (1933-34), head basketball coach at Bagdad High School (1934-36) and principal and coach at Gleneyrie High school (1936-42) and physical education instructor at UK in 1942. He was to carry on that trend of carrying extra loads, serving as UK's baseball coach for 17 seasons prior to relinquishing the post following the 1965 campaign and teaching a physical education class during the past 18 years.

Basketball was his forte, however, and he became recognized as one of the game's master strategists and designer of offenses and defenses to fit certain situations. In addition to coaching Rupp's freshman teams, he has always been at the side of the "baron" during the heat of battle. In his own right, Lancaster has traveled extensively and received a signal honor when he was invited to prepare the Greek National Basketball Team for the 1968 Olympics. A six-week tour in Athens was cancelled when Lancaster was asked to stay home and serve as acting athletics chief of staff.

ATHLETICS AT KENTUCKY

Kentucky's athletic program, a well-balanced and ambitious activity featuring inter-collegiate competition in ten different sports, is organized under the Department of Athletics and a corporation known as the University of Kentucky Athletics Association.

The program is conducted without overemphasis or sacrifice of educational objectives and in strict compliance with the rules of the University, the Southeastern Conference and the National Collegiate Athletic Association.

A board of directors, headed by the University President in the capacity of chairman, maintains overall policy supervision of the athletic program. Ex-officio members, in addition to the president, include Vice Presidents for Student Affairs and University Relations, President of the K-Men's Association, Dr. W. L. Matthews in the capacity of secretary to the board, and a student representative—all appointed by the president. Twelve other men, drawn from the University faculty and the general public, also serve on the board as appointees of the president.

Supervising the steady growth and balanced

development of one of the nation's top athletic programs is Acting Athletic Director Harry C. Lancaster.

The Association's Board of Directors is composed of the following:

Chairman (President)
Vice Chairman (V.-P. Stu. Affairs)
Dr. W. L. Matthews, Jr., Secretary
Dr. Ralph Angelucci
Prof. David Blythe
Dr. Thomas Brower
Wallace W. Bryan, Jr. (Student)
Albert B. Chandler
Dr. Glen Creech
Dr. Stephen Diachun
Dr. Lyman Ginger
James Host
Dr. A. D. Kirwan
Dr. J. L. Massie
James H. Pence
Dr. N. J. Pisacano
Dr. W. C. Royster
Floyd Wright

A new dimension in shopping pleasure . . .

McAlpin's

- Where fashion is foremost
- Lexington's complete department store
- Located in the Turfland Mall
- Open Monday thru Saturday till 9 P.M.



...in friendliness and banking service
in Lexington and Fayette County.



You save more than money
with U.S. Savings Bonds

CENTRAL BANK & TRUST COMPANY

Four Locations: Short & Upper, Turfland Mall, Eastland Shopping Center, Southland Drive at Regency Road.

All Deposits Insured up to \$15,000 by Federal Deposit Insurance Corporation

1968 KENTUCKY FOOTBALL SCHEDULE

Date	Opponent	Site	Date	Opponent	Site
Sept. 21	Missouri	Home	Oct. 26	*Georgia	Home
Sept. 28	*Mississippi	Away	Nov. 2	West Virginia	Away
Oct. 5	*Auburn	Home	Nov. 9	Vanderbilt	Home
Oct. 12	*Oregon State	Home	Nov. 16	Florida	Home
Oct. 19	*Louisiana State	Away	Nov. 23	Tennessee	Away

* Night Game

Lexington Yellow Cab Co.

Inc.

**ALL
RADIO CABS**

Dial 252-2231

**ALL
RADIO CABS**



LINEUP FOR '68-69—The University of Kentucky cheerleading corps for the 1968-69 school year consists of (left to right, on ground) Betsy Sanders, Steve Weisemuller, Benny Harper, Terry Brewer, Vic Caven, Mike Fisher and Lyn Branson, and (in the air) Cheri Hughes, Cindy Hosea, Jennifer Burcham, Diana Parker and Marty Boone.

STUDENT ATHLETICS COMMITTEE FORMED TO PROMOTE SPIRIT AND SUPPORT



LEFT TO RIGHT—Gale Phillips, Chairman Card Section; Linda Lennon, Chairman Kentucky Belles; Nancy Underwood, Co-Chairman of Kat Catchers; Rosemary Cox, Chairman Publicity; Lyn Branson, Cheerleader Representative; Betty Helburn, Chairman of Pep Club. STANDING—Earnie Robbins, Chairman of the SAC; Keith Simmons, Chairman Little Wildcat Club.

Charlie Bradshaw and other members of the University of Kentucky athletics staff, long concerned with rather lachrymose student interest and support of the total athletic program, saw positive action taken in 1967 to overcome this drawback.

The "sophisticated" attitude of students reached a critical stage when the body started ignoring cheerleaders and ridiculing teams during the 1967 season.

Early in October of that year, the late Bernie A. Shively, athletic director, and Sandy Bugie, homecoming chairman, met to discuss Homecoming 1967 and to talk about lack of spirit and pride in the University in general and the football team in particular.

The outcome of this discussion was a called meeting of interested students and a representative of a public relations firm which has dealt with similar problems on another campus.

Meeting with Mr. Shively and Miss Bugie were Steve Cook, president of the Student Government; Robert Walker, chairman of the Student Activities Board; and Guy Mendes, Sports Editor of the Kentucky Kernel.

As a follow-up to that meeting, Miss Bugie and Mr. Walker were invited to kick-off Homecoming 1967 by speaking to the Lexington Quarterback-Tip-Off Club. They told the group that Homecoming is a time of tradition and pride, but those two elements were missing at the University of Kentucky.

The Q-T Club accepted the challenge to participate in all Homecoming activities, as did the student body, and attendance at all the events was most pleasing. For the first time in years, students seemed willing to back the team and work with them for victory.

On a bitter cold Homecoming Day, the student body and others stayed to the very end as the Wildcats defeated West Virginia, 22-7.

The following week, Miss Bugie and Walker discussed with Dr. John W. Oswald, then UK president, different means of promoting the athletic program.

Mr. Shively felt a student athletics board was one possible approach to the problem. He met with the students that afternoon, rehearsed the morning meeting and helped set up the Student Athletics Committee.

A letter to Dr. Oswald asked that the president appoint the committee, keeping in mind that the SAC was to act as a liaison between the student body and the president, the athletics board, the athletic director and outside supporting groups.

The committee was also to promote spirit, pride and enthusiasm in the athletic program at all levels and to work with coaches of all sorts in recruiting and other phases. The over-all task of SAC was to create a favorable image of the non-athletic side of the University.

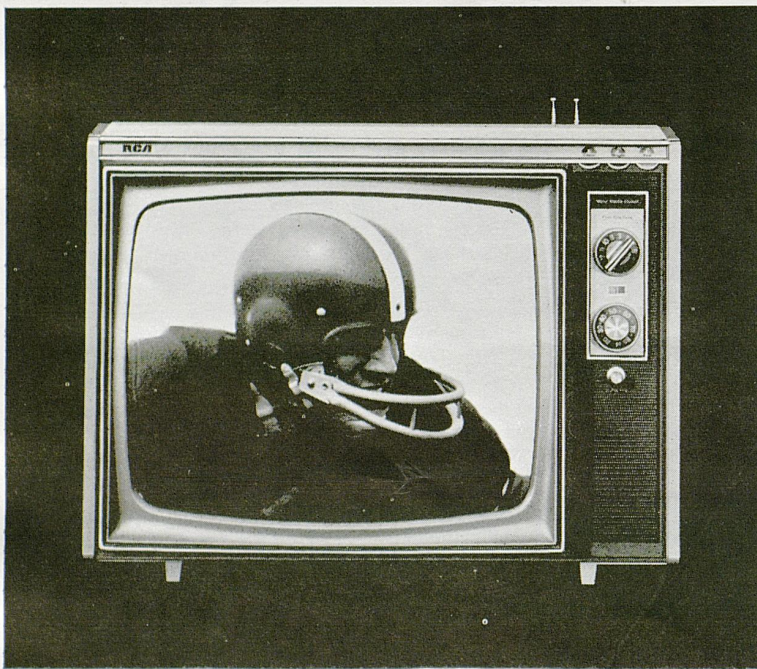
Another program of SAC is the newly organized Student-Faculty Quarterback-Tip-Off Club which will meet in the Grand Ballroom of the Student Center the first of each week, in season, to view game films and meet with the coaches.

A social committee of SAC consists of a group of no more than fifty attractive coeds versed, through a seminar-type program, in fundamentals of various sports. They will assist in recruiting and at other functions.

A card section and pep club also were set up for this year by SAC, which seeks to develop school spirit by selling buttons, shakers, blankets, ties, and other things blue.

Key to SAC success is total student involvement and the committee seeks to deliver the message that the Wildcats represent the entire student body and that the University, Lexington, the State of Kentucky and everywhere the Wildcats travel is "Wildcat Turf."

The mini-color portable with the maxi-color screen from RCA.



RCA engineers have pared pounds to make this a truly portable color TV—with no sacrifice in the quality of its sharp, clear 18" diag., 180-sq. in. color picture. Weighs less than some other sets with smaller screens. Carry the Candidate home from your RCA dealer's today.

Pieratt's

HONOR BOUND SERVICE

Applianceland

933-937 WINCHESTER ROAD, 40505
2375 NICHOLASVILLE ROAD, 40503
LEXINGTON, KENTUCKY



Coach Charlie Bradshaw kneels in the center of the men who will assist him in coaching the Kentucky football team in 1968. Flanking Coach Bradshaw in front are (left to right) offensive coach Jim Poynter, offensive line coach William Conde, defensive end coach Clarence Underwood and defensive backfield coach Leon Fuller. Standing (left to right) Phil Owen, in charge of the kicking game; trainer Chris Patrick, defensive coach Doug Shively, offensive backs coach Wilburn Tucker, freshman coach Wally English and interior defensive line coach Charley Pell.

Wildcat Coaching Staff

One new face is included in Coach **Charlie Bradshaw's** coaching staff as the 78th season of football gets under way at the University of Kentucky.

Replacing veteran George Sengel, who left UK prior to fall practice to become an area scout for the National Football League, is **Wilburn Tucker**, former head coach at Tennessee Tech.

Coach Tucker brings to the Wildcat staff 22 years coaching experience, including the last 14 years as head coach.

His record includes a 55-34 Ohio Valley Conference slate which included five championships (1955-58-59-60-61).

Tucker is part of an offense staff coordinated by **Jim Poynter**, a former Wildcat (1959-60) who had a great schoolboy coaching career (40-10-1) at Glasgow, Clark County and Henry Clay before joining Bradshaw's staff two years ago as offensive backfield coach.

The offensive staff is rounded out by **William (Moon) Conde**, another former Wildcat who returned to Alma Mater a year ago, and **Phil (Duke) Owen**, who are responsible for the offensive line. The 41-year-old Conde is a former Wildcat player of the glorious early fifties "Bowl Era." During his undergraduate days at Kentucky, he saw action as an offensive guard and linebacker on defense.

Senior coach in length of service to the profession is **Clarence (Buckshot) Underwood**, whose primary responsibility is the defensive end corps. Underwood, line coach for the Wildcats from 1948-55, returned to UK ranks in 1966. A native of West Virginia, he had a sparkling coaching career (77-26-6) record at Thomas Jefferson High School in Port Arthur, Texas.

Co-ordinating the defense and concentrating on linebackers is **Doug Shively**, who played end for the Wildcats from 1956 through 1958 and was co-captain his final year. He returned to the Kentucky campus in 1966 after one year as an assistant to Underwood at Port Arthur and six years as an aide at Virginia Tech.

The defensive staff includes two other promising and proven young coaches.

Leon Fuller, former All-Conference defensive back and academic

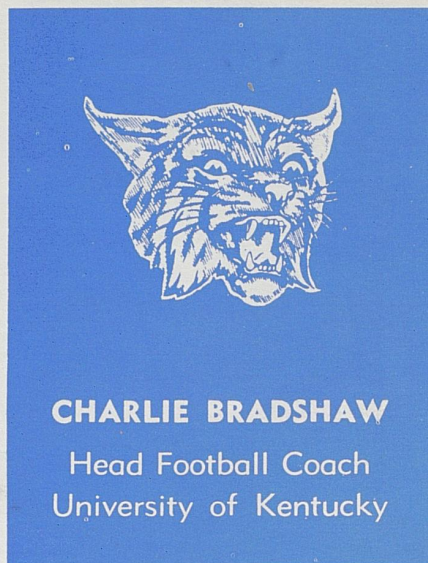
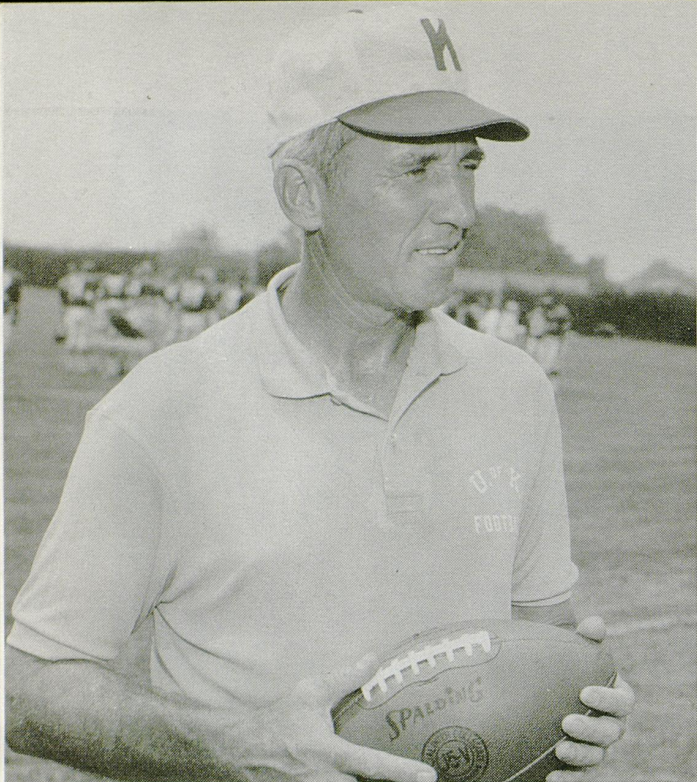
All-America at Alabama, came to Kentucky in 1966 from Oklahoma State, where he was an assistant for three years. He was a four-sports standout at Nederland (Texas) High School before attaining junior college All-America honors at Tyler, Texas. He played his final two years under Bradshaw, then an assistant at Alabama. He is responsible for the defensive backfield.

Charley Pell, who joined the Wildcats in 1966 at a defensive interior line coach, completed a military obligation last year in time for fall practice and is responsible for the defensive interior line. He was a defensive standout in the Alabama line.

Phil (Duke) Owen, who joined the Wildcat staff in 1964 after a highly successful career at Mt. Sterling, coached the Wildcat freshmen two years before receiving his first varsity assignment, working with backs on both offense and defense, year before last. His responsibilities also include the kicking game.

Wally English, who worked directly with the quarterbacks and passing game last season, has moved to head coach of the freshmen. He joined UK as a graduate assistant in 1965 after serving as an assistant at DeSales High School in 1959 and head coach four years at Bishop David High School in Louisville and one year at Mt. Carmel High in Houston, Texas. He is also responsible for all film exchanges, perpetual inventory of football equipment and co-ordination of the visitation program for high school and college students.

Another new face in the staff lineup is **Chris Patrick**, who came to UK in March as head trainer, succeeding Ralph Berlin, now with the Pittsburgh Steelers. Patrick is a graduate of Central High School in Fayetteville, Tenn., and the University of Tennessee, where he earned a B.S. in physical education. He also holds an M.A. degree in secondary education from Eastern Kentucky University (1963). He has served as head trainer of all sports at Eastern and as assistant football coach for one season at Erlanger-Lloyd High School. He joined the staff of Florida State in June 1964 as associate athletic trainer and then was head trainer the past three years at Mississippi State.



Wildcat Coach Sets Winning Tradition . . .

The fruits of six hard years of working for better athletics programs throughout the Commonwealth may be realized in the near future for Charlie Bradshaw, head football coach at the University of Kentucky. Bradshaw, a 43-year-old former UK end and assistant coach, returned to his alma mater in 1962 with a two-fold mission—rebuild the sputtering Wildcat football fortunes and develop good athletics and pride throughout the state.

Current recruiting gives Bradshaw three good years in a row. Coupled with a "red-shirt" program, this lends hope that Wildcat numbers may finally be built to a level needed to compete in the SEC.

Bradshaw started his football at the age of 15 at Sidney Lanier High School in his hometown of Montgomery, Alabama. He attended one semester at the University of Kentucky in 1942 before entering the Marines.

After three years service, including 19 months in the Pacific Theater, he returned to UK to play on Paul Bryant's first three Wildcat teams.

Bradshaw earned the first of four letters as a center in 1946 and the three more as a 165-pound end.

He joined the coaching staff as a student assistant in 1949 and then, in 1950, returned to Sidney Lanier as coach and coordinator of a junior high program—a position he retained until chosen an aide on the first UK staff of Blanton Collier in 1954.

Bradshaw served five years as end coach and later backfield coach before moving in 1959 to Alabama as a line coach for Bryant.

In 1962—his first season as UK head coach—Bradshaw's "Thin Thirty" won just three games. Bradshaw built his forces to a national contender in 1965, when an injury-plagued squad finished 6-4 and 17th in the final UPI poll.

The preceding year, Bradshaw was named National Coach of the Week after his team defeated No. 1 ranked Ole Miss at Jackson. Bradshaw served as an assistant on the Gray's coaching staff for the 1962 Blue-Gray Game that year in Montgomery, Alabama.

KENTUCKY ADVANCE GRID SCHEDULES

1969

Sept. 20 Indiana at Lexington
 Sept. 27 Mississippi at Lexington
 Oct. 4 Auburn at Auburn
 Oct. 11 Va. Tech at Blacksburg
 Oct. 18 La. State at Lexington
 Oct. 25 Georgia at Athens
 Nov. 1 W. Virginia at Lexington
 Nov. 8 Vanderbilt at Nashville
 Nov. 15 Florida at Gainesville
 Nov. 22 Tennessee at Lexington

1970

Sept. 19 Kansas St. at Lexington
 Sept. 26 Mississippi (Away)
 Oct. 3 Auburn at Lexington
 Oct. 10 Utah State at Lexington
 Oct. 17 LSU at Baton Rouge
 Oct. 24 Georgia at Lexington
 Oct. 31 N. Carolina St. at Lex.
 Nov. 7 Vanderbilt at Lexington
 Nov. 14 Florida at Lexington
 Nov. 21 Tennessee at Knoxville

1971

Sept. 18 Indiana at Bloomington
 Sept. 25 Mississippi at Lexington
 Oct. 2 Auburn at Auburn
 Oct. 9 Ohio U. at Lexington
 Oct. 16 LSU at Lexington
 Oct. 23 Georgia at Athens
 Oct. 30 VPI at Lexington
 Nov. 6 Vanderbilt at Nashville
 Nov. 13 Florida at Gainesville
 Nov. 20 Tennessee at Lexington

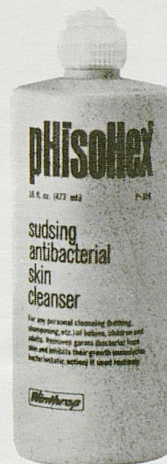
1972

Sept. 16 Indiana at Lexington
 Sept. 23 Alabama (in Alabama)
 Sept. 30 Open
 Oct. 7 Mississippi St. at Lex.
 Oct. 14 N. Carolina at Chapel Hill
 Oct. 21 LSU at Baton Rouge
 Oct. 28 Georgia at Lexington
 Nov. 4 Tulane at New Orleans
 Nov. 11 Vanderbilt at Lexington
 Nov. 18 Florida at Lexington
 Nov. 25 Tennessee at Knoxville



We're proud...

that pHisoHex® has been selected as the antibacterial wash to be used by the U.S. Team for the 1968 Olympic Games!



A *winning athlete* takes special care of his skin. Above all, he protects it against bacteria that can cause infections and lead to missed practice sessions and games.

If you've ever tried to play with an infected blister on your heel or an abscess on your finger, then you know the role of healthy skin in sports. And that's why pHisoHex is an important part of an athlete's daily health routine. pHisoHex is America's leading liquid antibacterial skin cleanser in homes and in hospitals. Used regularly in place of soap, pHisoHex produces a superclean skin *and* builds up an invisible antibacterial film of hexa-

chlorophene to protect your skin against germs between washings.

And if you have problem skin, pHisoHex is often valuable. The antibacterial film it leaves on your face will ward off blemish-infecting bacteria. pHisoHex also helps to soften and wash away blackheads.

Use pHisoHex, the skin cleanser of winning athletes.

Made by Winthrop Laboratories, 90 Park Avenue, New York, N.Y. 10016. Available in drugstores in 5 oz. and 16 oz. plastic squeeze bottles.

Winthrop

Winthrop Laboratories, New York, N.Y. 10016

(1230C)



The Chevrolet starting line-up for 1969:

(if we don't build the car you want, maybe what you want isn't a car.)

Chevrolet

Caprice Coupe
Caprice Sedan
Impala Custom Coupe
Impala Sport Coupe
Impala Sport Sedan
Impala Convertible
Impala 4-Door Sedan
Bel Air 4-Door Sedan
Bel Air 2-Door Sedan
Biscayne 4-Door Sedan
Biscayne 2-Door Sedan

Chevelle

Malibu Sport Coupe
Malibu Sport Sedan
Malibu Convertible
Malibu 4-Door Sedan
300 Deluxe Sport Coupe
300 Deluxe Coupe
300 Deluxe 4-Door Sedan

Chevrolet Wagons

119" Wheelbase
Kingswood Estate Wagon
(2- & 3-seat)
Kingswood Station Wagon
(2- & 3-seat)

Townsmen Station Wagon
(2- & 3-seat)
Brookwood Station Wagon
(2-seat)

116" Wheelbase
Concours Estate Wagon
(2- & 3-seat)
Concours Station Wagon
(2- & 3-seat)
Greenbrier Station Wagon
(2- & 3-seat)
Nomad Station Wagon
(2-seat)

Camaro

Sport Coupe
Convertible

Chevy Nova

Coupe
Sedan

Corvair

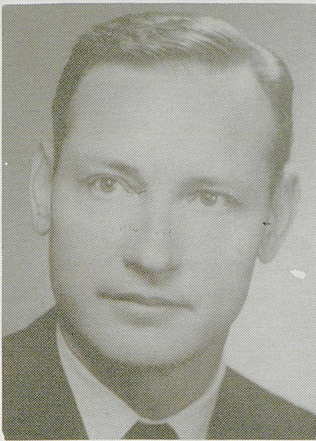
Monza Sport Coupe
Monza Convertible
Corvair 500 Sport Coupe

Corvette

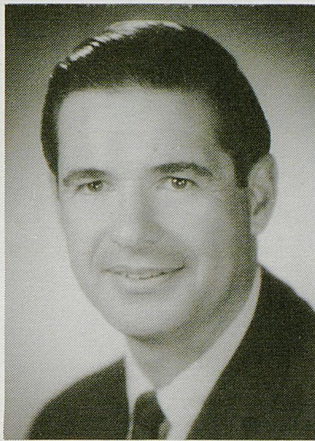
Coupe
Convertible

Putting you first, keeps us first.





DR. JOHN W. SCHWADA
Chancellor



DAN DEVINE
Head Football Coach



WILBUR STALCUP
Assistant Athletic Director

University of Missouri



MEMORIAL STUDENT CENTER



JERRY BENTLEY



CHARLES BLACKBURN



DICK BEARD



HUGH BLAND



MIKE BOULWARE



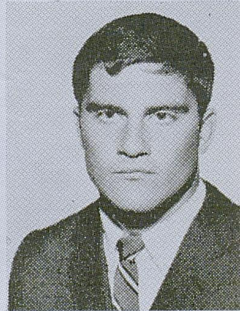
ENTUCKY



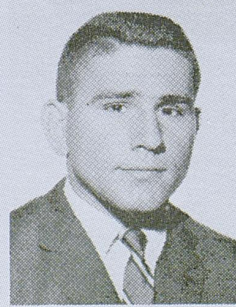
DAVE BAIR



BILL CARTWRIGHT



RODNEY CLOYD



ED ZAREMBA

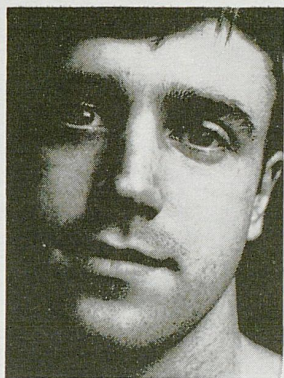


RICKY DEASON

Break your beard in right.

Right now your beard is in the formative stage.

You can shave it with a razor blade like your father does. And each time you do your beard will grow back a little more difficult. Until one day shaving's no longer a chore. It's an agony.



Look no further than your father's face for proof.

But fortunately, you're catching your beard at an early age. You can break it in to be just as shaveable 10 and 20 years from now as it is today.

With a REMINGTON® shaver.

And if you think the kind of shave we're selling won't be close enough for you, you're wrong.

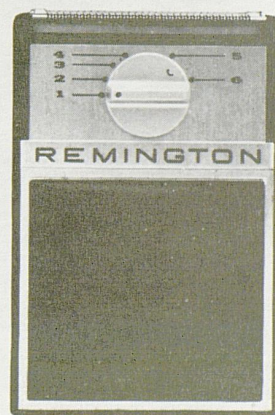
Our new blades are sharper than anything that's been in an electric shaver before. And there's a dial that lets you adjust them for your skin and beard.

What's more, you can dial a REMINGTON electric shaver into a sideburn trimmer.

Admittedly, it costs more to buy our electric shaver than a razor and some blades.

But it's a good investment.

These next few years will determine how you and your beard will get along for the rest of your lives. SPERRY RAND™ ©1968, SPERRY RAND CORP.

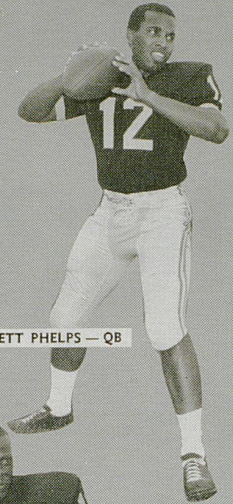


REMINGTON
ELECTRIC SHAVER DIVISION, BRIDGEPORT, CONNECTICUT.

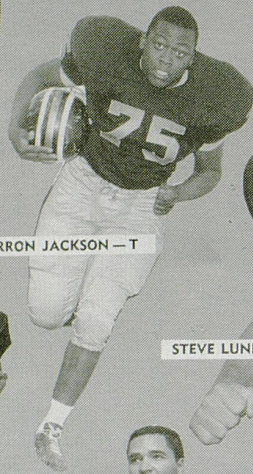
TIGERS



TIM CRNKO — G



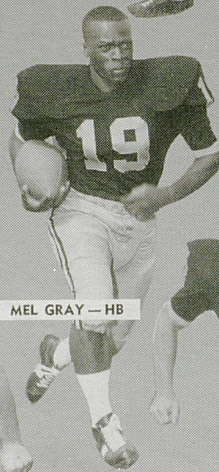
GARNETT PHELPS — QB



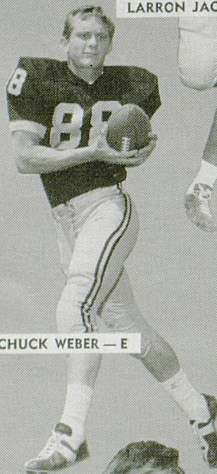
LARRON JACKSON — T



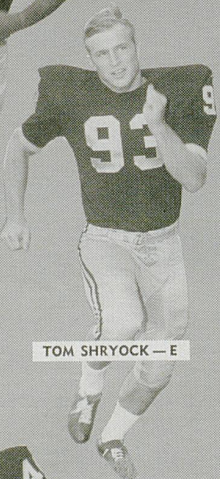
STEVE LUNDHOLM — LB



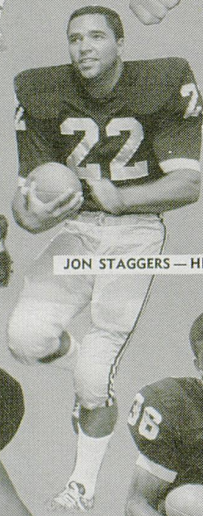
MEL GRAY — HB



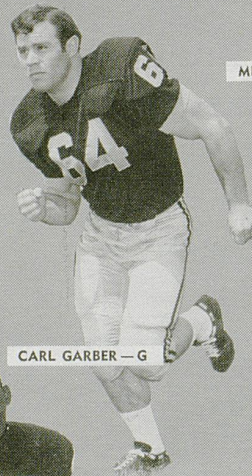
CHUCK WEBER — E



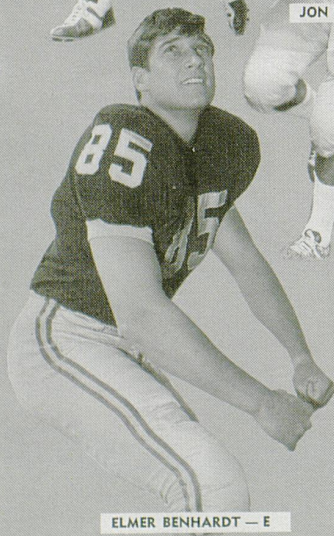
TOM SHRYOCK — E



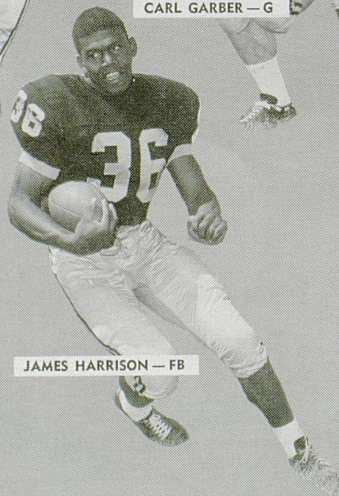
JON STAGGERS — HB



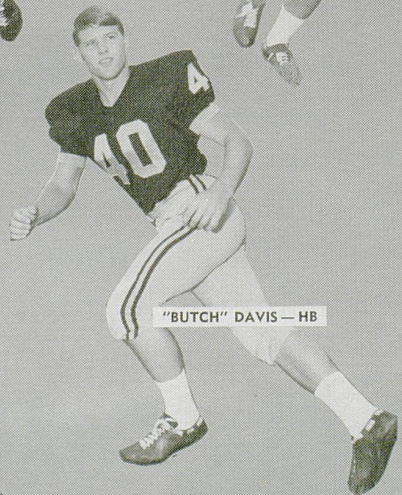
CARL GARBER — G



ELMER BENHARDT — E



JAMES HARRISON — FB



"BUTCH" DAVIS — HB

STATISTICALLY SPEAKING

KENTUCKY LEADERS — 1967 SEASON

RUSHING	Carries	Gain	Avg.	TD's
Lyons (QB-TB)	138	473	3.4	8
Gann, TB)	66	245	3.7	1
Beard (TB)	39	134	3.4	0

PASSING	Att.	Compl.	Pct.	Int.	Gain	TD's
Bair (QB)	164	66	40.3	21	634	3

RECEIVING	Caught	Yards	TD's
Thompson (E)	36	377	2
Jacobs (WB)	30	316	1
Potter (E)	19	206	0

PUNTING	Punts	Yards	Avg.
Lyons (QB-TB)	46	1733	37.7

SCORING	TD's	Convs.	FG's	Points
Lyons (QB-TB)	11	4	1	73

MISSOURI LEADERS — 1967 SEASON

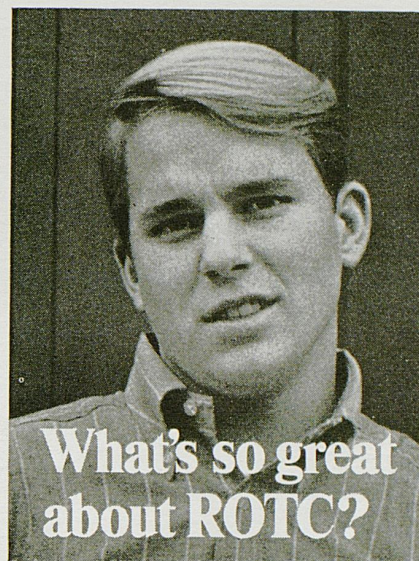
RUSHING	Carries	Gain	Avg.	TD's
Lischner	174	647	3.7	0
Kombrink	169	520	3.1	0

PASSING	Att.	Compl.	Pct.	Int.	Gain	TD's
Kombrink	97	34	35.1	8	452	1

RECEIVING	Caught	Yards	TD's
Weber	15	212	1
Staggers	6	110	1
Brown	8	105	0

PUNTING	Punts	Yards	Avg.
Kenemore	73	2228	38.8

SCORING	TD's	Convs.	FG's	Points
Wallace	0	15	4	47
Lischner	4	0	0	24
Kombrink	3	0	0	18



Check 'em.

Great opportunity. You earn a commission while you earn your college degree. Graduate—you start at the top. Fulfill your military obligation as an Army officer. With officer's pay. Officer's privileges.

Great advantages. Employers prefer a college graduate with service as an officer. Pay more to get him. Because he's a trained, experienced leader. Can handle heavier responsibilities.

Great success. From the 5% of college men who had ROTC training have come 24% of our state governors, 28% of executives earning \$100,000 to \$325,000 per year, 10% of Congress, 15% of our ambassadors.

Great guys. ROTC men are campus leaders—in ROTC, athletics, extracurricular activities. And they do better scholastically than non-ROTC students.

Great extras. \$50 per month in junior and senior years. Scholarships for outstanding students. Free flight training at over 125 colleges. Extra social activities—military balls, honor societies, bands, rifle teams.

Any way you look at it, there's a lot more going for you when you're in ROTC.

Your future, your decision . . .

choose **Army ROTC.**

Army ROTC CP 69
 P.O. Box 12703
 Philadelphia, Pa. 19134

I want to know more about Army ROTC.
 Send me your free brochure.

Name _____ Age _____

Address _____

City _____

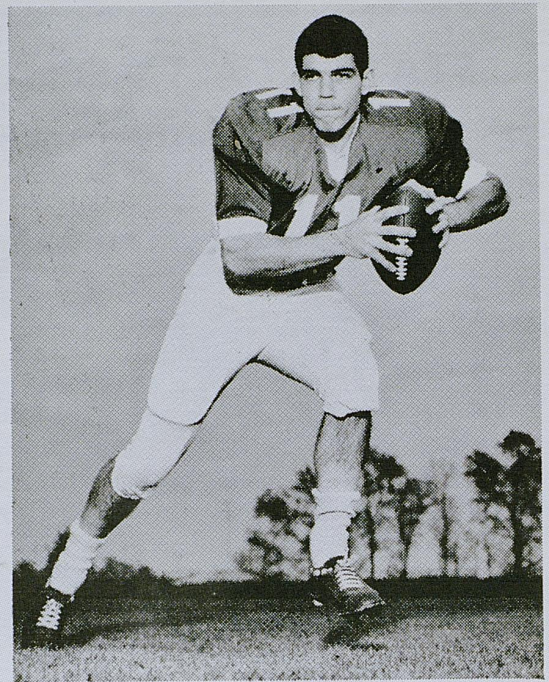
State _____ Zip _____



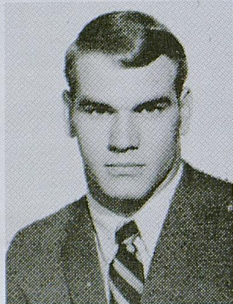
DENNIS DRINNEN



TOM DUFFY



STAN FORSTON



BILL DUKE



PAT ECKENROD



BOB FREIBERT



LOUIS WOLF



BOBBY FINNELL



PHIL FORJAN



WINSTON GAFFRON



Quietly elegant clothing for gentlemen and ladies who value individuality and distinction.

GRAVES, COX
AND COMPANY INC.
ESTABLISHED 1888

Two convenient locations . . . 126 W. Main, Downtown, and Turfland Mall, 2033 Harrodsburg Road

MISSOURI *Tigers*

No.	Name	Pos.	Class	Age	Ht.	Wt.	Hometown
12	Garnett Phelps	QB	Jr.	21	5-11	187	Louisville, Ky.
14	Mike Farmer	QB	Soph.	18	6-2	181	Jefferson City, Mo.
16	Guy Gardocki	QB	Soph.	19	5-11	176	Baldwinsville, N. Y.
18	Terry McMillan	QB	Jr.	20	6-1	182	Coral Gables, Fla.
21	Mel Gray	HB	Soph.	20	5-9	169	Santa Rosa, Calif.
22	Jon Stagers	HB	Jr.	20	5-10	182	Jefferson City, Mo.
23	Roger Wehrli	HB	Sr.	22	6-0	187	King City, Mo.
24	Henry Brown	HB	Jr.	20	6-2	198	Middletown, Pa.
25	Greg Cook	HB	Sr.	21	6-0	192	Seneca, Mo.
26	Nip Weisenfels	LB	Soph.	19	5-11	200	Webster Groves, Mo.
27	George Fountain	HB	Soph.	18	5-9	170	Houston, Tex.
28	Dennis Poppe	HB	Jr.	19	6-3	205	Anchor, Ill.
32	Ron McBride	FB	Jr.	20	6-0	202	Fulton, Mo.
33	Jerry Boyd	LB	Jr.	20	6-3	202	Butler, Mo.
36	James Harrison	FB	Soph.	19	6-4	238	San Antonio, Tex.
38	Ed Glosson	HB	Soph.	19	5-10	154	San Antonio, Tex.
40	"Butch" Davis	HB	Jr.	20	5-11	183	Chillicothe, Mo.
41	Larry Moore	FB	Sr.	20	5-11	195	Timewell, Ill.
45	Joe Moore	HB	Soph.	19	6-1	196	St. Louis, Mo.
46	Steve Kenemore	E	Jr.	20	6-3	210	Lee's Summit, Mo.
47	Stan Hunter	HB	Jr.	20	6-0	189	Joplin, Mo.
48	Tyrone Walls	FB	Soph.	20	6-3	205	Antioch, Ill.
49	John Hamilton	HB	Soph.	19	5-9	158	Trenton, Mo.
50	Tim Crnko	G	Jr.	20	6-0	199	St. Louis, Mo.
51	Con Rees	C	Sr.	21	6-2	203	Sedalia, Mo.
52	Gene Hertz	C	Soph.	20	6-3	215	Creston, Ia.
55	Steve Lundholm	LB	Jr.	21	6-0	191	Des Moines, Ia.
58	Bob Wilson	LB	Soph.	21	6-1	197	Jefferson City, Mo.
60	John Cowan	T	Soph.	19	6-1	200	Springfield, Mo.
61	Joe Clark	G	Jr.	19	5-11	206	St. Louis, Mo.
62	Dan Kelley	G	Soph.	20	6-0	198	St. Louis, Mo.
63	Sam Adams	G	Jr.	20	6-0	202	Midland, Tex.
64	Carl Garber	G	Sr.	22	6-0	203	St. Louis, Mo.
65	Adam Vital	LB	Soph.	19	6-0	209	Houston, Tex.
66	Mike Carroll	T	Jr.	20	6-3	222	Ste. Genevieve, Mo.
67	Roger Boyd	G	Sr.	22	6-1	215	Butler, Mo.
69	Jay Wallace	T	Jr.	21	6-1	216	Fulton, Mo.
70	Eric Lowder	T	Soph.	20	6-4	213	Kirkwood, Mo.
74	Lynn Cox	T	Soph.	20	6-1	228	Memphis, Tenn.
75	Larron Jackson	T	Soph.	19	6-3	244	St. Louis, Mo.
76	Steve Mizer	G	Soph.	19	6-0	196	Kansas City, Mo.
77	Jim Anderson	T	Sr.	21	6-4	218	Webster Groves, Mo.
79	Mark Kuhlman	T	Jr.	20	6-3	218	St. Louis, Mo.
80	John Henley	E	Soph.	19	5-10	170	San Bernardino, Calif.
81	Ron Stoeckel	LB	Jr.	20	6-0	179	Belleville, Ill.
83	Jim Judd	E	Sr.	21	6-2	210	St. Louis, Mo.
84	Joe Hauptman	E	Jr.	21	6-1	207	Granite City, Ill.
85	Elmer Benhardt	E	Sr.	21	6-3	209	St. Louis, Mo.
86	Jim Juras	E	Sr.	22	6-0	196	St. Louis, Mo.
87	Bill Schmitt	E	Sr.	21	6-3	217	Imperial, Mo.
88	Chuck Weber	E	Sr.	21	6-0	191	Jefferson City, Mo.
93	Tom Shryock	E	Jr.	20	6-0	199	Fredericktown, Mo.

Olds Vista-Cruiser: Kind of like owning your own stadium.

We didn't start out to build a stadium on wheels. Vista-Cruiser just sort of grew into one. It's bigger this year. Handles like a bigger car. Built on a longer 121-inch wheelbase. Inside, there's more room to stretch out, up and sideways. The

forward-facing third seat lets you see where you're going . . . not where you've been. And there's more room to carry all the stuff you carry . . . on and under the big rear deck. Plus room for even more when

you order the sturdy chrome luggage rack topside. All this, plus a 50-yard-line view of the world outside through the cool, tinted Vista-Roof. Take the whole family along for a test drive in a Vista-Cruiser at your Olds Dealer's. That way you'll have your own cheering section, too.



1968 Vista-Cruiser, in 2- and 3-seat versions, both with all the new GM safety features.

Drive a youngmobile from Oldsmobile





Coca-Cola

TRADE-MARK ®

Coca-Cola

Coke

Coca-Cola

Coke has the ta

TRADE-MARK ®

COCA-COLA AND COKE ARE REGISTERED TRADE-MARKS WHICH IDENTIFY ONLY THE PRODUCT OF THE COCA-COLA COMPANY. PRINTED IN U.S.A.



OFFENSE

- 93 TOM SHYROCK LE
- 77 JIM ANDERSON LT
- 61 JOE CLARK LG
- 51 CON REES C
- 50 TIM CRNKO RG
- 75 LARRON JACKSON RT
- 88 CHUCK WEBER RE
- 18 TERRY McMILLAN QB
- 22 JON STAGGERS LH
- 24 HENRY BROWN RH
- 32 RON McBRIDE FB

Missouri

DEFENSE

- 85 ELMER BENHARDT LE
- 67 ROGER BOYD LT
- 64 CARL GARBER LG
- 63 SAM ADAMS RG
- 69 ROCKY WALLACE RT
- 87 BILL SCHMITT RE
- 55 STEVE LUNDHOLM LB
- 26 NIP WEISENFELS LB
- 23 ROGER WEHRLI LH
- 40 BUTCH DAVIS RH
- 28 DENNIS POPPE Saf

TIGER SQUAD

- | | |
|-------------------|-----------------|
| 12 Phelps, QB | 55 Lundholm, LB |
| 14 Farmer, QB | 58 Wilson, LB |
| 16 Gardocki, QB | 60 Cowan, T |
| 18 McMillan, QB | 61 Clark, G |
| 21 Gray, HB | 62 Kelley, G |
| 22 Staggers, HB | 63 Adams, G |
| 23 Wehrli, HB | 64 Garber, G |
| 24 Brown, HB | 65 Vital, LB |
| 25 Cook, HB | 66 Carroll, T |
| 26 Weisenfels, LB | 67 Boyd, G |
| 27 Fountain, HB | 69 Wallace, T |
| 28 Poppe, HB | 70 Lowder, T |
| 32 McBride, FB | 74 Lynn, T |
| 33 Boyd, LB | 75 Jackson, T |
| 36 Harrison, FB | 76 Mizer, G |
| 38 Glosson, HB | 77 Anderson, T |
| 40 Davis, HB | 79 Kuhlman, T |
| 41 L. Moore, FB | 80 Henley, E |
| 45 J. Moore, HB | 81 Stoeckel, LB |
| 46 Kenemore, E | 83 Judd, E |
| 47 Hunter, HB | 84 Hauptman, E |
| 48 Walls, FB | 85 Benhardt, E |
| 49 Hamilton, HB | 86 Juras, E |
| 50 Crnko, G | 87 Schmitt, E |
| 51 Rees, C | 88 Weber, E |
| 52 Hertz, C | 93 Shryock, E |

OFFICIALS

- | | |
|------------|---------------|
| Referee | James Artley |
| Linesman | George Morris |
| Back Judge | Gordon Pettus |

DEFENSE

- 25 JACK MATHEWS CAT
- 88 JEFF VAN NOTE LE
- 79 GEORGE KATZENBACH LT
- 39 FRANK RUCKS SLB
- 69 STEVE KOON NOSE
- 44 WILBUR HACKETT QLB
- 73 MARTY JOYCE RT
- 84 DICK PALMER RE
- 34 AL PHANEUF LHB
- 21 DAVE HUNTER Saf
- 23 AL GODWIN RHB

Kentucky

OFFENSE

- 81 VIC KING SE
- 74 DENNIS DRINNEN LT
- 67 LOUIS WOLF LG
- 52 PAT ECKENROD C
- 66 KENNY WOOD RG
- 71 BOB FREIBERT RT
- 87 DAVE HARDT RE
- 35 DICK BEARD TB
- 45 RAYNARD MAKIN FB
- 19 DAVE BAIR QB
- 20 JOE JACOBS WB

WILDCAT SQUAD

- | | |
|-------------------|--------------------|
| 11 Forston, QB | 59 Bentley, OT |
| 12 Scruggs, QB | 60 Roller, DG |
| 16 Bland, QB | 61 Yerdon, OG |
| 18 Cloyd, DHB | 62 Morris, OG |
| 19 Bair, QB | 63 Hanson, OG |
| 20 Jacobs, WB | 64 Moates, LB |
| 21 Hunter, SAF | 65 Finnell, OG |
| 23 Godwin, DHB | 66 Wood, OG |
| 24 Lyons, TB | 67 Wolf, OG |
| 25 Mathews, DHB | 69 Koon, DG |
| 26 Martin, WB | 70 Pursell, OT |
| 27 Meighan, DHB | 71 Freibert, OT |
| 28 Hogg, FB | 72 Boulware, DT |
| 29 Forjan, OE | 73 Joyce, DT |
| 30 P. Greer, DHB | 74 Drinnen, OT |
| 32 Gann, FB-TB | 75 Sauerbry, DT |
| 33 Reynolds, WB | 77 Rush, OT |
| 34 Phaneuf, DHB | 78 D. King, DT |
| 35 Beard, TB | 79 Katzenbach, DT |
| 38 Blackburn, SAF | 80 Thompson, OE |
| 39 Rucks, LB | 81 V. King, OE-WB |
| 40 Holland, DHB | 83 Potter, OE |
| 41 Duffy, DHB | 84 Palmer, DE |
| 42 Shahid, LB | 85 R. Greer, OE |
| 43 Mitchell, FB | 86 Porterfield, DE |
| 44 Hackett, LB | 87 Hardt, OE |
| 45 Makin, FB-TB | 88 Van Note, DE |
| 46 Duke, LB | 89 Gaffron, DE |
| 49 Miller, LB | 90 Jones, KS |
| 51 Cartwright, C | 91 Weld, KS |
| 52 Eckenrod, C | 93 Deason, DE |
| 54 Wolfe, OG-C | 94 Opheikens, DE |
| 56 Marvis, DT | 95 Hazle, LB |
| 58 Zarembo, DT | |

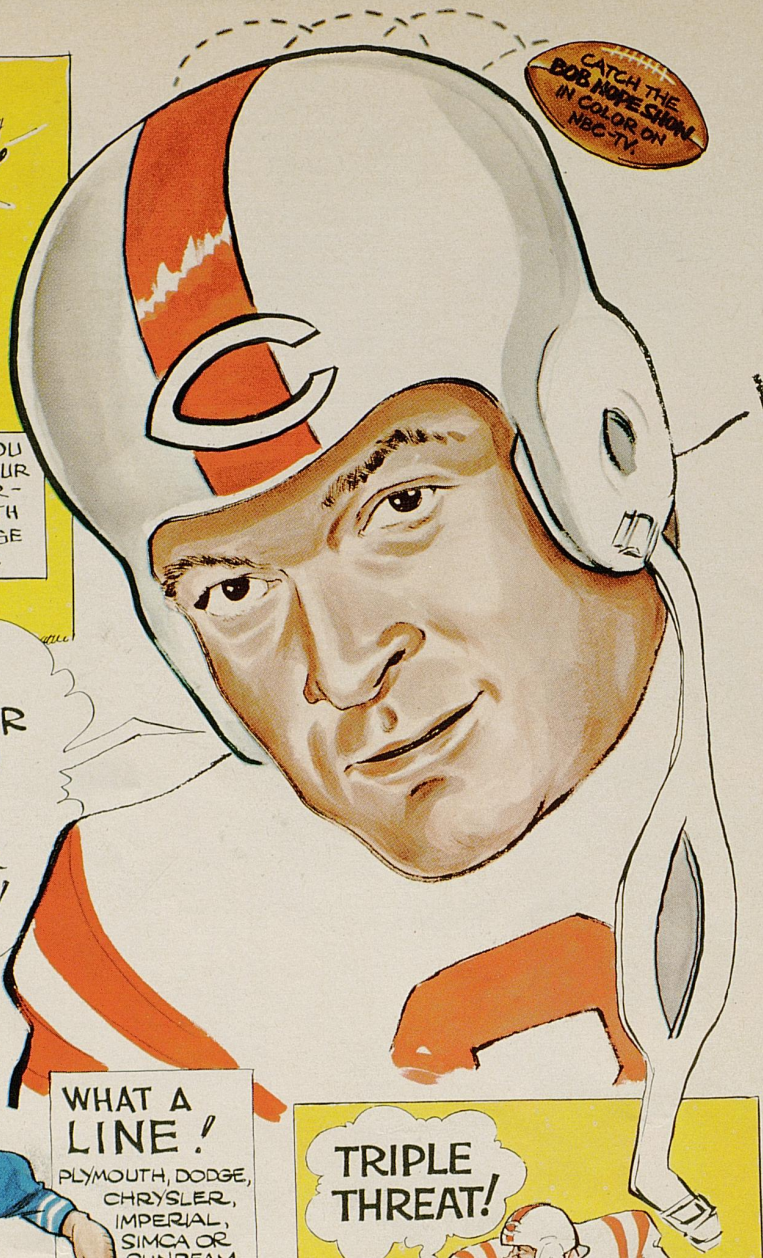
- | | |
|-------------|-----------------|
| Umpire | John Kekc |
| Field Judge | Chester Laney |
| ECO | William Stanton |

e taste you never get tired of.



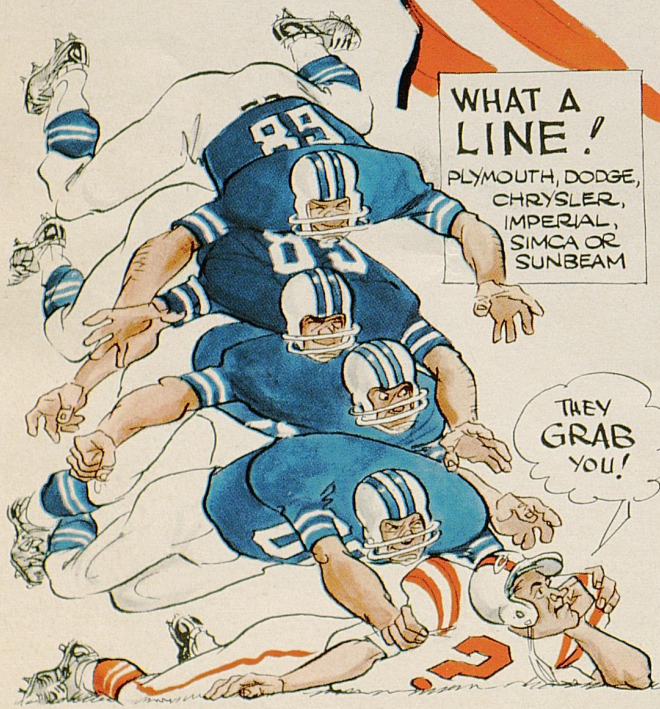
TIME OUT!

BEFORE YOU BUY, SEE YOUR CHRYSLER-PLYMOUTH OR DODGE DEALER.



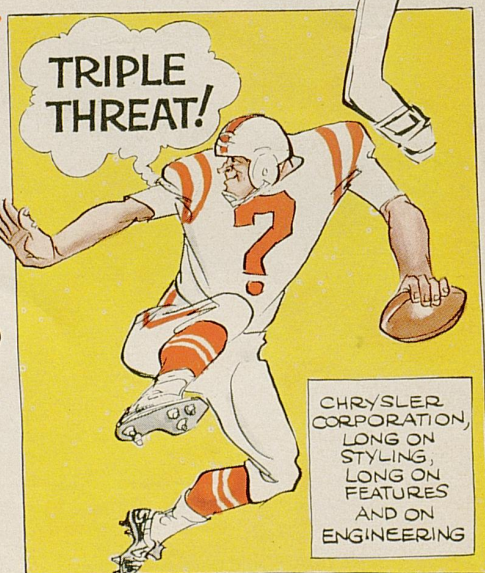
CATCH THE BOB HOPE SHOW IN COLOR ON NBC-TV

...BE THE CENTER OF ATTENTION IN A NEW CAR FROM CHRYSLER CORPORATION!



WHAT A LINE!
PLYMOUTH, DODGE, CHRYSLER, IMPERIAL, SIMCA OR SUNBEAM

THEY GRAB YOU!



TRIPLE THREAT!

CHRYSLER CORPORATION, LONG ON STYLING, LONG ON FEATURES AND ON ENGINEERING

Plymouth • Dodge • Chrysler • Imperial • Dodge Trucks • Simca • Sunbeam



CHRYSLER CORPORATION

SEE THE AFL IN ACTION EACH WEEK ON NBC-TV.

KENTUCKY *Wildcats*

No.	Name	Pos.	Class	Age	Ht.	Wt.	Hometown
11	Stan Forston	QB	Soph.	20	6-1	192	Lexington, Ky.
12	Bernie Scruggs	QB	Soph.	19	6-1	190	Atlanta, Ga.
16	Hugh Bland	QB	Soph.	19	6-2	191	Bardstown, Ky.
18	Rodney Cloyd	DHB	Sr.	21	6-0	186	Lawrenceburg, Ky.
19	Dave Bair	QB	Jr.	21	6-0	184	Greensburg, Pa.
20	Joe Jacobs	WB	Jr.	20	6-0	184	Hobbs, N. Mex.
21	Dave Hunter	SAF	Soph.	19	5-10	168	Pine Bluff, Ark.
23	Al Godwin	DHB	Soph.	20	6-0	173	Raleigh, N. C.
24	Dicky Lyons	TB	Sr.	21	6-0	195	Louisville, Ky.
25	Jack Mathews	DHB	Soph.	19	5-11	186	Montgomery, Ala.
26	Paul Martin	WB	Soph.	19	5-10	176	Owensboro, Ky.
27	Mike Meighan	DHB	Soph.	20	6-1	185	Avonmore, Pa.
28	Houston Hogg	FB	Soph.	20	6-1	216	Owensboro, Ky.
29	Phil Forjan	OE	Soph.	19	6-0	189	Steelton, Pa.
30	Phil Greer	DHB	Sr.	21	6-2	192	Burdine, Ky.
32	Roger Gann	FB-TB	Jr.	20	6-2	205	Fayetteville, N. C.
33	Jay Reynolds	WB	Soph.	19	6-0	168	Perryville, Ky.
34	Al Phaneuf	DHB	Sr.	24	6-0	191	Montreal, Quebec
35	Dick Beard	TB	Jr.	21	6-2	207	Altoona, Pa.
38	Charles Blackburn	SAF	Jr.	20	6-2	203	Westerville, Ohio
39	Frank Rucks	LB	Soph.	18	6-0	205	Henderson, Ky.
40	Don Holland	DHB	Jr.	20	6-0	185	Worthington, Ohio
41	Tom Duffy	DHB	Soph.	19	6-1	188	Levittown, Pa.
42	Carl Shahid	LB	Jr.	20	5-10	188	Ft. Walton Beach, Fla.
43	Jim Mitchell	FB	Soph.	19	6-0	196	Louisville, Ky.
44	Wilbur Hackett	LB	Soph.	18	5-9	185	Louisville, Ky.
45	Raynard Makin	FB-TB	Soph.	19	6-3	211	Hobbs, N. Mex.
46	Bill Duke	LB	Jr.	20	5-11	187	Owensboro, Ky.
49	Donnie Miller	LB	Soph.	19	6-0	199	Princeton, Ky.
51	Bill Cartwright	C	Sr.	21	6-2	198	Princeton, Ky.
52	Pat Eckenrod	C	Soph.	19	6-4	210	Chattanooga, Tenn.
54	Roddy Wolfe	OG-C	Soph.	19	6-1	201	Oxford, Miss.
56	Sam Marvis	DT	Soph.	20	6-4	231	Mt. Pleasant, Pa.
58	Ed Zaremba	DT	Jr.	22	6-2	215	Parma, Ohio
59	Jerry Bentley	OT	Soph.	19	6-2	210	South Shore, Ky.
60	Dave Roller	DG	Soph.	18	6-2	222	Dayton, Tenn.
61	Marty Yerdon	OG	Soph.	21	6-1	208	Troy, N. Y.
62	Tom Morris	OG	Soph.	19	5-11	214	Chattanooga, Tenn.
63	Dave Hanson	OG	Soph.	19	6-2	218	Greensburg, Pa.
64	Steve Moates	LB	Soph.	20	6-0	198	Kingston, Tenn.
65	Bobby Finnell	OG	Soph.	19	5-11	187	Atlanta, Ga.
66	Kenny Wood	OG	Sr.	21	6-1	205	Montgomery, Ala.
67	Louis Wolf	OG	Sr.	21	5-11	199	Louisville, Ky.
69	Steve Koon	DG	Jr.	18	6-0	190	Hopkinsville, Ky.
70	Dave Pursell	OT	Soph.	20	6-4	239	Morrisville, Pa.
71	Bob Freibert	OT	Sr.	21	6-2	214	Louisville, Ky.
72	Mike Boulware	DT	Jr.	19	6-2	221	Columbus, Ohio
73	Marty Joyce	DT	Jr.	21	6-1	239	Wilmington, Del.
74	Dennis Drinnen	OT	Sr.	21	6-1	225	Loveland, Ohio
75	Bruce Sauerbry	DT	Soph.	19	6-3	219	Langhorne, Pa.
77	Leonard Rush	OT	Jr.	21	6-2	225	Hamilton, Ohio
78	Doyle King	DT	Jr.	21	6-1	220	Mt. Sterling, Ky.
79	George Katzenbach	DT	Sr.	22	6-1	225	Philadelphia, Pa.
80	Phil Thompson	OE	Jr.	20	6-2	193	Louisville, Ky.
81	Vic King	OE-WB	Jr.	20	6-2	190	Kingston, Tenn.
83	Derek Potter	OE	Sr.	21	6-2	194	Elkhorn City, Ky.
84	Dick Palmer	DE	Jr.	21	6-1	207	Huntsville, Ala.
85	Roger Greer	OE	Soph.	19	6-3	195	Burdine, Ky.
86	Don Porterfield	DE	Soph.	19	6-2	202	Edgewood, Md.
87	Dave Hardt	OE	Soph.	20	6-4	225	Attleboro, Mass.
88	Jeff Van Note	DE	Sr.	22	6-1	220	Anchorage, Ky.
89	Winston Gaffron	DE	Soph.	19	6-2	193	Brownsville, Tenn.
90	Bob Jones	KS	Soph.	18	6-2	163	Lexington, Ky.
91	Dave Weld	KS	Sr.	24	5-9	180	Malvern, Pa.
93	Ricky Deason	DE	Soph.	19	6-3	202	Hodgenville, Ky.
94	Clint Opheikens	DE	Soph.	19	6-1	203	Ogden, Utah
95	Bill Hazle	LB	Soph.	21	6-1	204	Hopkinsville, Ky.

KENTUCKY SPECIALISTS

PUNTERS: Lyons (24), Hardt (87)
 FIELD GOALS: Roller (60), Hardt (87)
 PAT's: Jones (90), Weld (91)

INFORMATION

SERIES: UK Won 1, Missouri 0
 UK WIN: 7-0 in 1965 (A)

**KENTUCKY
Wildcats**

(SENIORS, Juniors, Sophomores)

FACTS ABOUT KENTUCKY

Interim President..... Dr. Albert D. Kirwan
 Acting Athletic Director..... Harry C. Lancaster
 Head Coach..... Charlie Bradshaw
 Publicists..... Ken Kuhn and Russell Rice
 Colors..... Blue and White
 Offense..... Pro Type

SE	LT	LG	C	RG	RE
81 V. King (80 Thompson) 29 Forjan	74 DRINNEN 77 Rush 59 Bentley	67 L. WOLF 54 Wolfe (61 Yendon)	52 Eckenrod 51 CARTWRIGHT	66 WOOD 63 Hanson 94 Ophthikens	71 FREIBERT 70 Pursell 87 Hardt 85 R. Greer
	TB	FB	QB	WB	
	35 Beard (24 LYONS) 32 Gann	45 Makin 43 Mitchell	19 Bair (11 Forston) 12 Scruggs	20 Jacobs 26 Martin 33 Reynolds	

OFFENSE

OFFENSE

CAT	LE	LT	SLB	NOSE	QLB
25 Mathews 40 Holland (41 Druffy)	88 VAN NOTE 89 Gaffron (86 Porterfield)	79 KATZENBACH (72 Boulware) 56 Marvis	39 Rucks (42 Shahid) 95 Hazle	69 Koon 60 Roller 58 Zaremba	44 Hackett 64 Moates
RT	RE	LHB	SAFETY	RHB	
73 Joyce 78 D. King	84 Palmer 93 Deason	34 PHANEUF (18 CLOYD) 27 Meighan	21 Hunter 38 Blackburn	23 Godwin 30 P. GREER	

DEFENSE

DEFENSE

MISSOURI SPECIALISTS

PUNTERS—Kenemore (46), Brown (24)
 CONVERSIONS—Wallace (69), Brown (24)
 KICKOFFS—Brown (24), Wallace (69), Hunter (47)

FACTS ABOUT MISSOURI

LOCATION: Columbia, Mo.; ENROLLMENT: 20,500
 CONFERENCE: Big Eight

**MISSOURI
Tigers**

(SENIORS, Juniors, Sophomores)

FACTS ABOUT MISSOURI

Chancellor..... Dr. John W. Schwada
 Athletic Director and Coach..... Dan Devine
 Publicist..... Bill Callahan
 Colors..... Old Gold and Black
 Offense..... I Formation

LE	LT	LG	C	RG	RE
93 Shryock 86 JURAS	77 ANDERSON 70 Lowder	61 Clark 66 Carroll	51 REES 52 Hertz	50 Crnko 62 Kelley	88 WEBER 46 Kenemore
QB	LH	RH	FB		
18 McMillan 12 Phelps	22 Stagers 25 COOK	24 Brown 48 Walls	32 McBride 36 Harrison		

OFFENSE

OFFENSE

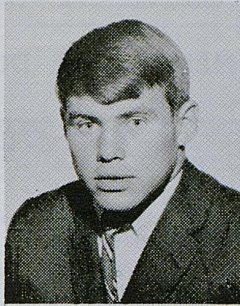
LE	LT	LG	RG	RE
85 BENHARDT 83 JUDD	67 BOYD 74 Cox	64 GARBER 65 Vital	63 Adams 60 Cowan	87 SCHMITT 84 Hauptman
LB	LB	LH	RH	SAFETY
55 Lundholm 33 Boyd	26 Weisenfels 81 Stoeckel	23 WEHRLI 27 Fountain	40 Davis 16 Gardlocki	28 Poppe 49 Hamilton

DEFENSE

DEFENSE



AL GODWIN



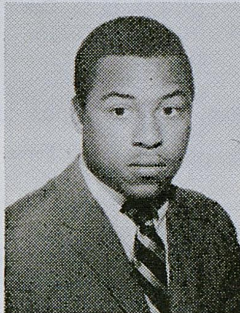
PHIL GREER



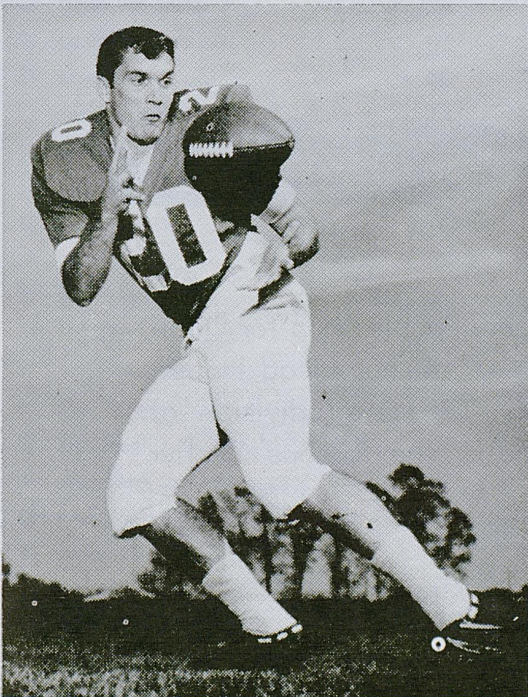
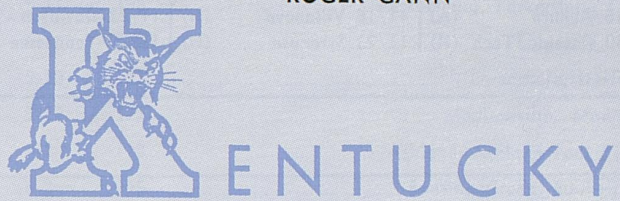
ROGER GANN



ROGER GREER



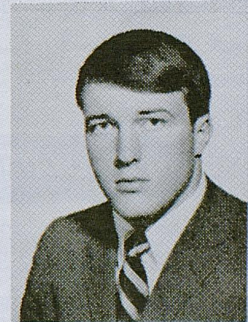
WILBUR HACKETT



JOE JACOBS



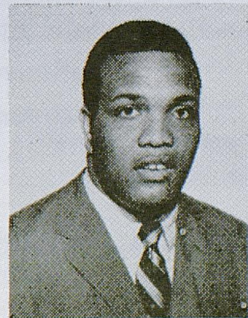
DAVE HANSON



KENNY WOOD



BILL HAZLE



HOUSTON HOGG

WHAT KENTUCKY OPPONENTS ARE DOING

MISSOURI (0-0)		MISSISSIPPI (0-0)		AUBURN (0-0)		OREGON STATE (0-0)		LOUISIANA STATE (0-0)	
9/21 Kentucky (A)		9/21 Memphis St. (A)		9/21 S.M.U. (H)		9/21 Iowa (A)		9/21 Texas A&M (H)	
9/23 Illinois (A)		9/28 Kentucky (N)		9/28 Miss. State (N)		9/28 Utah (A)		9/28 Rice (A)	
10/5 Army (H)		10/5 Alabama (N)		10/5 Kentucky (A)		10/5 Washington (H)		10/5 Baylor (H)	
10/12 Colorado (H)		10/12 Georgia (A)		10/12 Clemson (A)		10/12 Kentucky (A)		10/11 Miami (A)	
10/19 Nebraska (A)		10/19 So. Miss. (H)		10/19 Georgia Tech (N)		10/19 Arizona St. (N)		10/19 Kentucky (H)	
10/26 K-State (A)		10/26 Houston (N)		10/20 Miami (H)		10/26 Wash. St. (A)		10/26 T.C.U. (H)	
11/2 Oklahoma St. (H)		11/2 L.S.U. (A)		11/2 Florida (A)		11/2 Stanford (A)		11/2 Ole Miss (H)	
11/9 Iowa State (H)		11/9 Chattanooga (H)		11/9 Tennessee (N)		11/9 U.C.L.A. (H)		11/9 Alabama (N)	
11/16 Oklahoma (A)		11/16 Tennessee (A)		11/16 Georgia (H)		11/16 So. Cal. (A)		11/16 Miss. State (H)	
11/23 Kansas (H)		11/30 Mss. St. (H)		11/30 Alabama (N)		11/23 Oregon (H)		11/23 Tulane (A)	

GEORGIA (0-0-1)		WEST VIRGINIA (0-0)		VANDERBILT (0-0)		FLORIDA (0-0)		TENNESSEE (0-0-1)	
17 Tennessee (A)	17	9/21 Richmond (H)		9/21 V.M.I. (H)		9/21 Air Force (N)		17 Georgia (H)	17
9/28 Clemson (H)		9/28 Pitt (A)		9/28 Army (A)		9/28 Florida St. (A)		9/28 Memphis St. (H)	
10/5 So. Carolina (A)		10/5 Penn State (H)		10/5 No. Carolina (H)		10/5 Miss. State (H)		10/5 Rice (A)	
10/12 Ole Miss (H)		10/11 V.M.I. (N)		10/12 Alabama (A)		10/12 Tulane (H)		10/12 Georgia Tech (A)	
10/19 Vanderbilt (H)		10/10 Wm. & Mary (A)		10/19 Georgia (A)		10/19 No. Carolina (A)		10/19 Alabama (H)	
10/26 Kentucky (A)		10/26 Virginia Tech (A)		10/26 Florida (H)		10/26 Vanderbilt (A)		11/2 UCLA (H)	
11/2 Houston (H)		11/2 Kentucky (H)		11/2 Tulane (H)		11/2 Auburn (H)		11/9 Auburn (N)	
11/9 Florida (N)		11/9 The Citadel (A)		11/9 Kentucky (A)		11/9 Georgia (N)		11/16 Mississippi (H)	
11/16 Auburn (A)		11/16 Villanova (H)		11/22 Davidson (A)		11/16 Kentucky (A)		11/23 Kentucky (H)	
11/30 Georgia Tech (H)		11/23 Syracuse (H)		11/30 Tennessee (H)		11/30 Miami (H)		11/30 Vanderbilt (A)	

YOU ALWAYS DO BETTER AT *Sleepy Head House*

Lexington's largest furniture store "Where People Shop for Quality and Don't Mind Paying a Little Less." Sleepy-Head House, Main at Broadway, Phone: 254-7357. The retail division of Southern Bedding Co., Inc. The home of the famous Zephyr Mattress.


Main At Broadway — Phone 254-7357

UNIVERSITY OF KENTUCKY FRESHMEN

No.	Name	Pos.	Age	Ht.	Wt.	Hometown	High School
1	Joe Stephan	SAF	18	5-10	162	Parkersburg, W. Va.,	Parkersburg
2	Bob Wixson	LB	19	6-0	190		Louisville, Seneca
4	Garnet Scott	QB	18	6-3	174		Princeton, Caldwell Co.
5	Robert Simpson	TB	19	5-10	185		Lexington, Dunbar
6	Rick Muench	FB	18	6-2	203		Highland Heights, Highland
7	Gerald McKenzie	DHB	18	6-1	170		Catlettsburg, Ky., Catlettsburg
13	Paul Karem	QB	18	6-3	190		Louisville, St. Xavier
15	Steve Tingle	QB	19	5-10	170	Pleasure Ridge Park,	Pleasure Ridge Park
17	Bryan Johnson	QB	18	6-1	165		Lake City, Fla., Columbia
23	Tom Domhoff	TB	18	6-1	185		Louisville, Trinity
31	David Haydon	Rover	17	5-10	205		Austin, Texas, Lafayette
37	Daniel Featherston	OT	18	6-4	205		Lexington, Ky.
38	Joe Roedersheimer	FB	18	5-11	198		Parkersburg, Parkersburg Catholic
40	Bill Schneider	OG-C	19	6-1	220		Louisville, Durrett
41	Lynn Gary	SAF	17	5-10	173		Owensboro, Daviess Co.
42	Marc Wells	TB	18	5-10	175		Madisonville, Madisonville
43	Steve Scott	TB	18	6-2	190		Ashland, Ashland Paul B. Blazer
46	Johnny Young	DHB	18	6-2	195		Bowling Green, Bowling Green
48	David Van Meter	WB	17	6-0	175	Elizabethtown,	Elizabethtown Catholic
50	David Markem	DT	18	6-0	224		Kingston, Tenn., Roane Co.
51	Mike Cline	OG	18	6-3	190		Versailles, Ky., Woodford Co.
53	Joe Federspiel	LB	18	6-1	215		Louisville, DeSales
55	Gayle Goins	LB	18	6-0	215		Bowling Green, Bowling Green
57	John Marcum	OT	18	6-0	218		Louisville, Seneca
58	Jim Wegmann	C	18	6-1	219	Parkersburg, W. Va.,	Parkersburg
70	Leslie Lyons	DT	17	6-1	225		Ashland, Paul G. Blazer
72	Bill Bushong	DT	18	6-3	280	Tompsonville, Ky.	Tompkinsville High
73	Jim Hill	NG	17	6-1	218		Louisville, Thomas Jefferson
77	Art Honeycutt	OT	17	6-0	218		Angleton, Texas, Parkersburg
80	Tom Crowe	HB-QB	18	6-3	200		Owensboro, Daviess Co.
82	Jim Grant	OE	18	6-3	190		Louisville, Butler
84	Stan Jones	DE	18	6-2	190		Pikeville, Pikeville, Ky.
85	Paul Puckett	OG	18	6-3	205		Owensboro, Owensboro Senior
86	Danny Neal	TE	19	6-3	215		Louisville, Atherton
90	Bill DeSensi	SAF	18	5-8	195		Louisville, Flaget
97	Bill Crissey	DE-OE	18	6-3	220		Huntington, W. Va., Huntington

ONE OF THE SOUTH'S *Finest* Motels



110 Luxurious Rooms •	Cocktail Lounge		Imperial House Motel U.S. 68 Waller Ave. at Harrodsburg Road Phone 255-2540 for Reservations
Banquet & Meeting Rooms •	Two Dining Rooms		
Swimming Pool & Patio •	Dancing Nitely		



TOMMY MASTERS
 President and General Mgr.
 of Master's TV & Appliances

No Down Payment
 Up To 36 Months To Pay

MASTERS' TV AND Appliances

SALES • SERVICE • SATISFACTION

- ★ Zenith
- ★ Norge
- ★ Fedders
- ★ Frigidaire
- ★ Sylvania
- ★ Motorola

Complete Line Barwick Carpets

MASTERS' TV AND Appliances

706 Euclid Ave. 905 Winchester Rd. 488 Southland Dr.



DON HOLLAND



DAVE HUNTER



BOB JONES



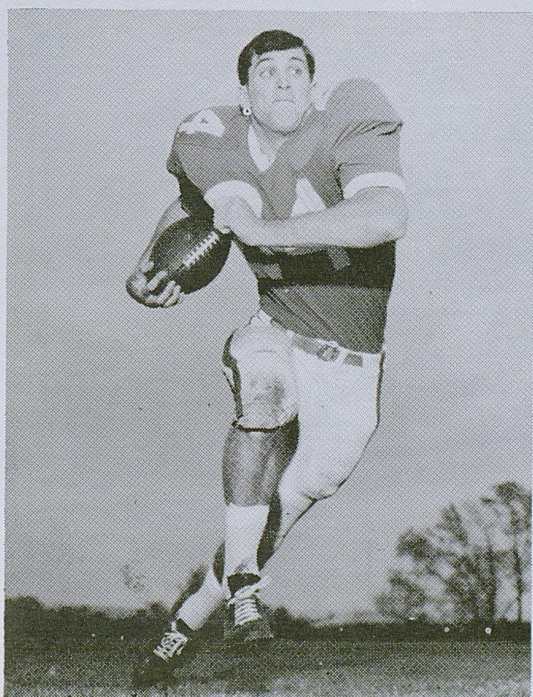
MARTY JOYCE



GEORGE KATZENBACH



ENTUCKY



DICKY LYONS



DOYLE KING



VIC KING



STEVE KOON



PAUL MARTIN

U OF K FOOTBALL

Exclusively on

WVLK

The No. 1 Spot For Sports



*Daniel Boone
Chicken and Beef
of Kentucky*

Brought To You By

And



SEC "Pick of Dixie"

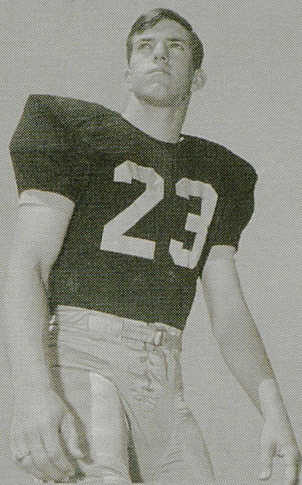
Cleveland Browns

Good Luck

WILDCATS

UNIVERSITY OF KENTUCKY FOOTBALL NETWORK

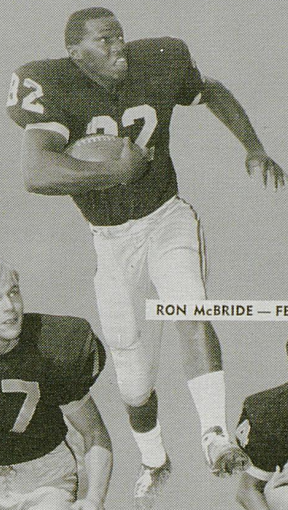
TIGERS



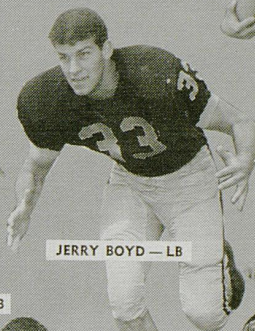
ROGER WEHRLI — HB



GREG COOK — HB



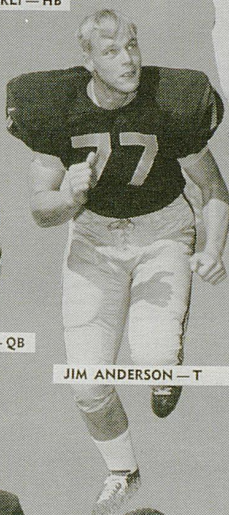
RON McBRIDE — FB



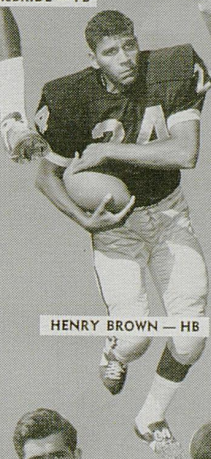
JERRY BOYD — LB



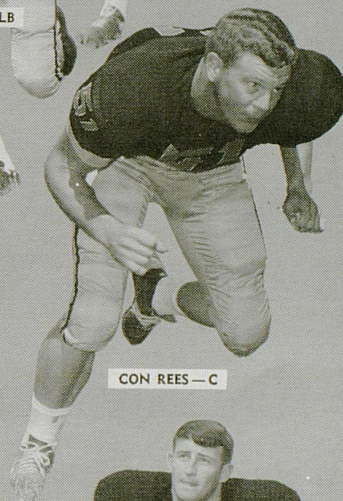
TERRY McMILLAN — QB



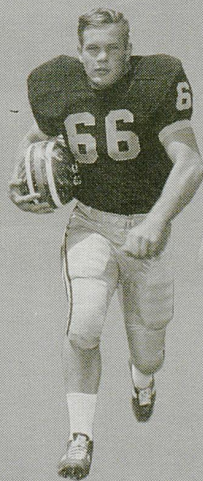
JIM ANDERSON — T



HENRY BROWN — HB



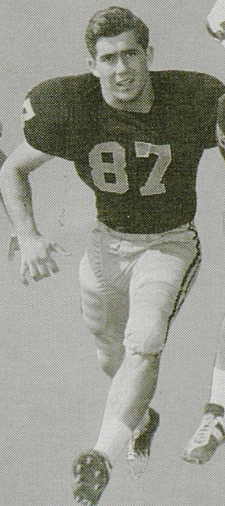
CON REES — C



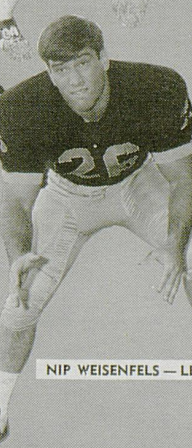
MIKE CARROLL — T



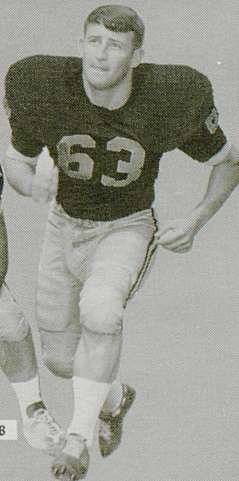
JAY WALLACE — T



BILL SCHMITT — E



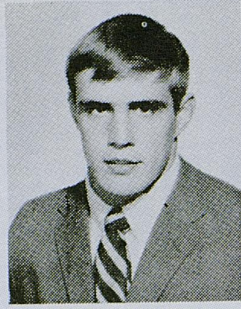
NIP WEISENFELS — LB



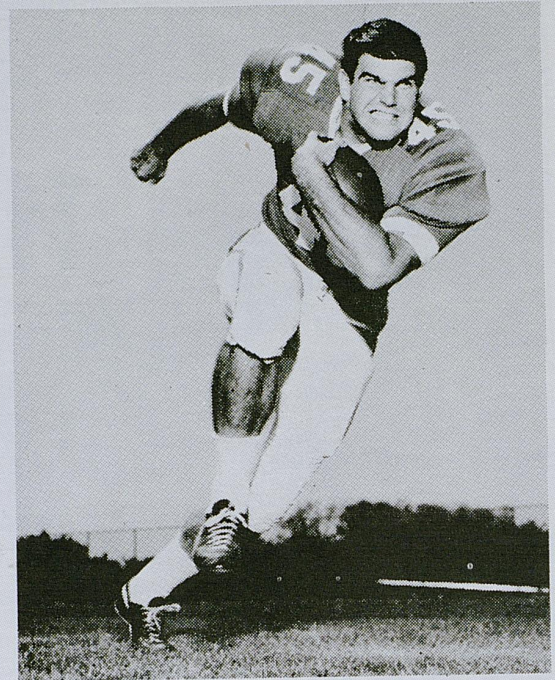
SAM ADAMS — G



SAM MARVIS



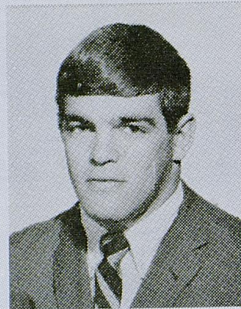
JACK MATHEWS



RAYNARD MAKIN



MIKE MEIGHAN



DONNIE MILLER



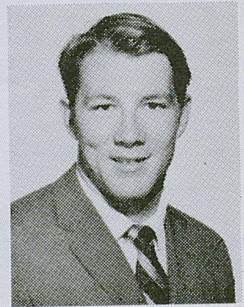
ENTUCKY



DICK PALMER



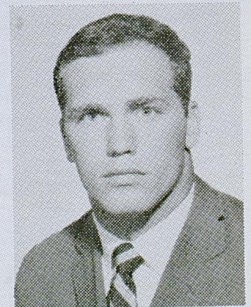
JIM MITCHELL



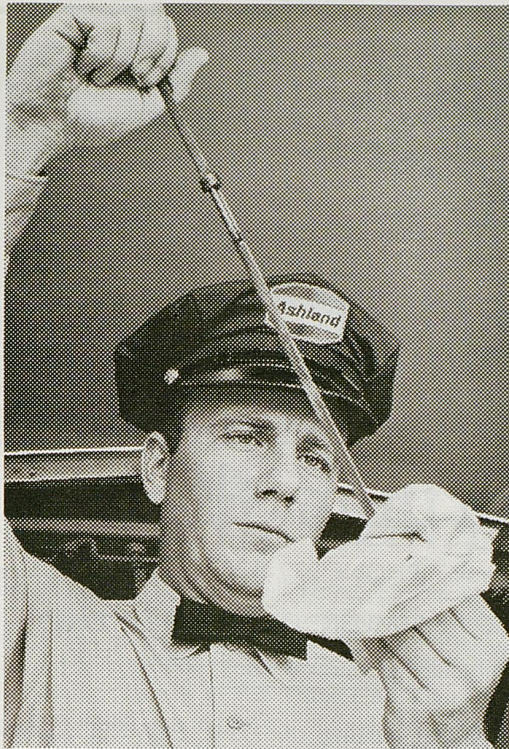
STEVE MOATES



TOM MORRIS



CLINT OPHEIKENS



Man in the know keeps you on the go!

Your Good Neighbor Ashland Dealer's brand of service is extra special. Call it Attitude. Or Personal Concern. Or Thoroughness. Or Reliability. It all adds up to extra care for your car at no extra cost . . . from your Ashland Dealer.

He also offers the very finest petroleum products available anywhere . . . such as Ashland Vitalized Gasoline and Valvoline Motor Oil.

To get the most out of your car . . . get to know your Good Neighbor Ashland Dealer. He's always "at your service."

ASHLAND OIL & REFINING COMPANY



buy with confidence at . . .

Stewart's

- Kentucky's favorite department store
- 380 car parking garage adjoining
- Open Mondays and Fridays 'til 9



Frisch's

THE ORIGINAL

BIG BOY



Springs Motel

2020 South Broadway PHONE 277-5751 Lexington, Kentucky

DANCE TO THE MUSIC OF "THE NEPTUNES"
Tuesday through Saturday — 9:00 - 1:00

Dine in the Elegant Setting of "THE POMPEI ROOM"
Private Dining Accommodations For Groups

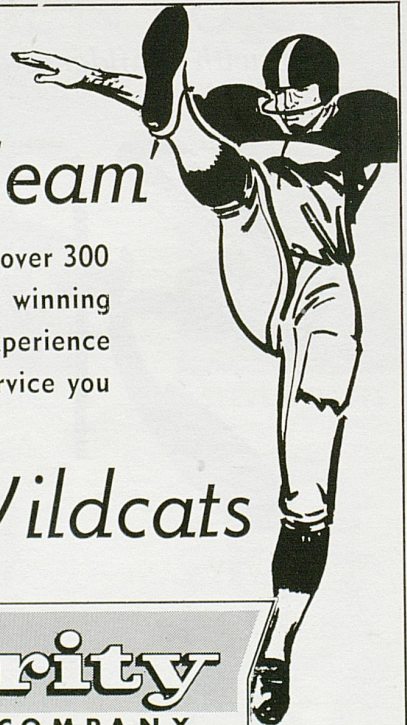
Buy U.S. Savings Bonds

the First Security 'Team

The First Security "Team" is made up of over 300 loyal members dedicated to giving you winning banking. They have the training, the experience and the desire to produce the kind of service you want at seven convenient locations.

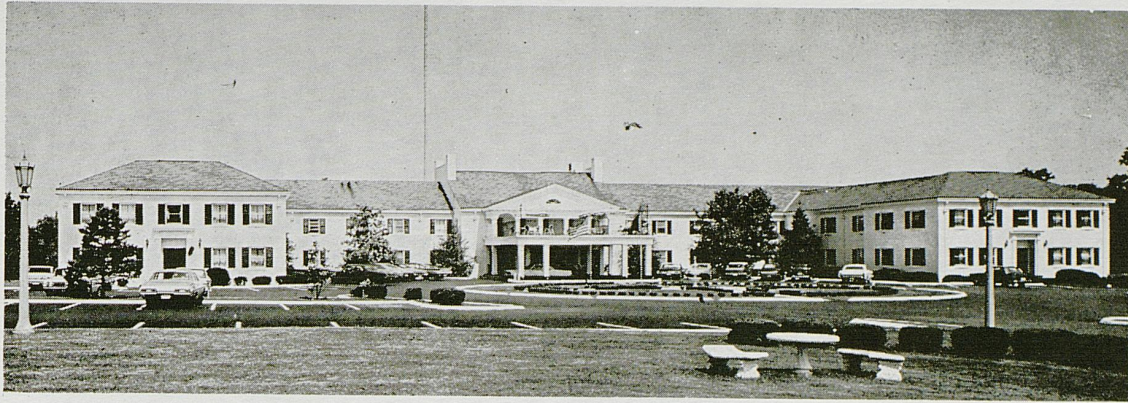
Is Pulling for the Wildcats

First Security
NATIONAL BANK AND TRUST COMPANY



Member FDIC

Member Federal Reserve System

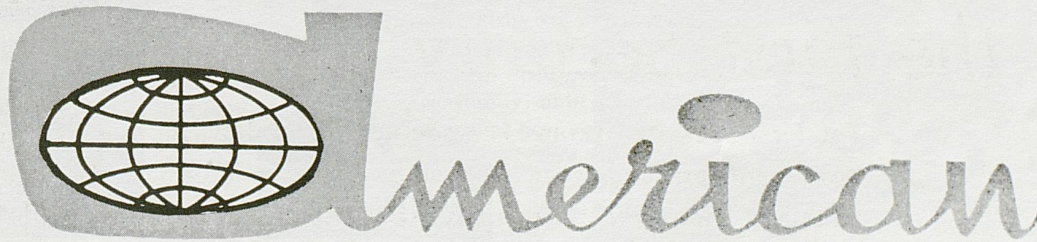


The Campbell House

Nothing matches The Campbell House for fun or food. The superb cuisine of the Red Lion Room will make your stay a memorable experience. Here you will find a happy blending of traditional Kentucky hospitality and every modern convenience; luxurious suites and rooms, beautiful Dining Room, Cocktail Lounge with sparkling entertainment, Swimming Pool, Gift Shop, Dress Shop, Barber Shop and Beauty Salon. Adjacent to Par Three Golf Course and Driving Range. May we have the pleasure of serving you soon?

1375 Harrodsburg Road • Lexington, Kentucky • Phone 255-4281

Support U. of K. Football



BUSINESSMEN'S LIFE INSURANCE COMPANY

108 LOWRY LANE

LEXINGTON, KENTUCKY 40503

PHONE 278-2351

Be A Wildcat Booster



DAVE WELD



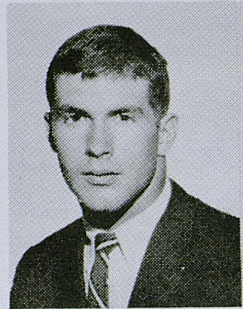
DON PORTERFIELD



AL PHANEUF



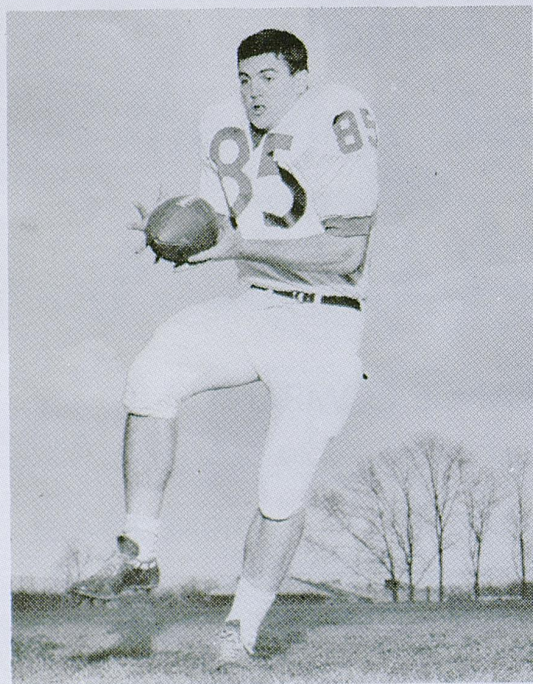
DAVE PURSELL



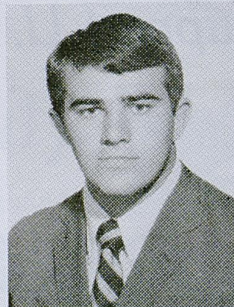
JAY REYNOLDS



ENTUCKY



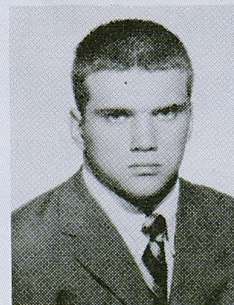
DEREK POTTER



FRANK RUCKS



LEONARD RUSH



BRUCE SAUERBRY



BERNIE SCRUGGS

Post-Game Party Gets Top Rating

by CAROLYN ANDERSEN



Photo: The Popcorn Institute

WHEN the referee throws both arms high into the air signaling "touchdown" for your favorite collegiate team, he also signals a time for celebration. And what better way to climax a big gridiron victory than by hosting a post-game party?

In order that the hostess may enjoy the excitement of the event to its fullest, the party should be a simple one. Plenty of good food can be prepared ahead of time so that only last minute warm-ups will be necessary when you get back from the stadium.

On game day, prepare one of the suggested main dishes, your own favorite gelatine salad, and have plenty of rolls, a simple dessert and the beverage of your choice on hand. Then, with your party fixin's ready, you'll still be on time for the opening kickoff and will be able to stay until the final gun.

First, try this idea for a chicken dish that is accented with crumbles of blue cheese and succulent mushrooms. The zesty concoction is served on top of crunchy chow mein noodles, or in pattie shells.

Melt one-quarter cup butter and stir in one-quarter cup flour. Gradu-

ally add one and three-quarters cups milk and one-half cup chicken broth (canned). Cook over medium heat, stirring constantly, until thickened. Add one-half teaspoon salt, pinch of sugar, one four-ounce can drained mushrooms, dash of monosodium glutamate, pepper, one teaspoon prepared horseradish, one and one-half cups blue cheese and two cups diced, cooked chicken. Cook over low heat, stirring constantly, until just heated through. Turn off heat and cover until time to reheat before serving your guests.

If you prefer a little more gourmet style main dish, try this recipe for Veal Elegante.

In large skillet, melt one-quarter cup butter or margarine and lightly brown two pounds veal cutlets, cut into one-inch pieces. Add one can (eight ounces) drained mushroom stems and pieces, and one clove minced garlic. Remove from skillet. Into drippings in skillet, stir two tablespoons flour, then one envelope onion soup mix; gradually add two cups water and one-quarter cup dry red wine. Cover and simmer 10 minutes, stirring occasionally. Add meat, mushrooms, and two tablespoons

chopped parsley and heat through. Turn off heat and leave covered until ready to heat at party time. Serve over noodles. Recipe makes six to eight servings.

Another fun idea is a Knife and Fork sandwich. The convenience of pre-cooked frozen foods keeps you from spending hours in the kitchen when the crowd gathers.

Slice one large loaf unsliced French bread lengthwise and spread bottom half with butter and prepared mustard. Heat in 350-degree oven for 10 or 15 minutes. Heat two packages frozen chili according to package directions. Spoon over buttered bread. Cut three slices processed cheese into several strips and place on top of chili. Top with strips of bacon and fresh onion rings. Cut into six or eight knife and fork sandwiches.

If you would like to plan something clever in the way of decorations for your "pigskin party," why not take a signal from the game ball itself and create a popcorn touchdown centerpiece?

To begin, mold a football out of five quarts popped popcorn and lace it with candy licorice strings. The popcorn can be molded the day before your party. A simple syrup coating can be made by combining two cups sugar, one and one-half cups water, one-half cup light corn syrup and one teaspoon vinegar, then cook to hard ball stage (250 degrees). Add one teaspoon vanilla and pour over popcorn. It will add delicious flavor and will help you shape your oval football.

Once the centerpiece has been molded place the licorice "strings" in lacing fashion and then wrap the popcorn in foil or saran until time to decorate the table. This way, it will keep fresh and crisp for eating.

Come party time, insert chocolate-coated bananas on skewers into the popcorn football. They're a frozen confection that everyone will enjoy. The bananas are cut in half, dipped in one package (six-ounce) melted semi-sweet chocolate chips and one tablespoon vegetable shortening and frozen until serving time. Easy to eat off the skewers, the bananas make an unusual and tasty sweet.

Whether your team scores a victory or not, your party is bound to be a winner.



WLEX-TV



"Best in SPORTS"



CY FOLLMER
WLEX-TV
SPORTS DIRECTOR

Presents

- SPORTS EXTRA 6:00 P.M.
- SPORTS FINAL 11:20 P.M.
- ● BOTH in FULL COLOR

● AFL FOOTBALL 1968

● 32 GAMES

● ● ● ● ● Including ● ● ● ●

- AFL Championship Dec. 29
- Super Bowl Jan. 12
- AFL ALL-STAR Game Jan. 19
- And Many Top NCAA Bowl Games
-

New and "USED" Book Center on Campus
in the
STUDENT CENTER

UNIVERSITY BOOK STORE

UK GLASSWARE

UK SWEATSHIRTS

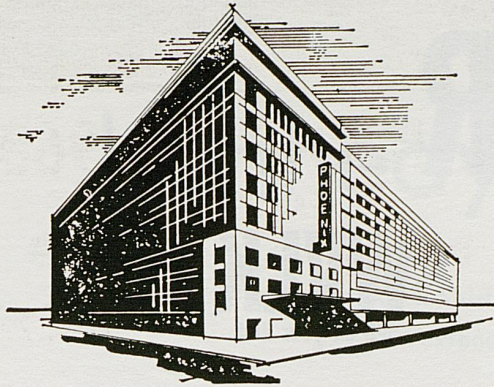
UK PENNANTS

UK JEWELRY

UK SOUVENIRS

UK DECALS

Lexington's Largest and Finest!



Kentucky's Convention
Headquarters
120 E. Main St.
Downtown Lexington, Ky.
Phone 255-3210

FEATURING
FIRE BIRD
RESTAURANT
and LOUNGE

- FREE PARKING
- BEVERAGE & FREE ICE MACHINE
ON EACH GUEST FLOOR
- 100% AIR CONDITIONED
- TV IN ALL ROOMS—COLOR & B & W
- COFFEE SHOP WITH ECONOMICAL PRICES

A Major Renovation Program Is In Progress

The  Phoenix

We at HUNT'S are pleased to supply to the University of Kentucky Athletics Association merchandise manufactured by the following firms:

Adidas—Track Shoes

Bike Web Company—Trainer's Supplies

MacGregor—Football Uniforms and Equipment
for Football, Baseball, and all Sports

Cramer Chemical Company—Trainer's Supplies

Fair Play Scoreboard Company—Football Score-
board and Basketball Scoreboard

Johnson and Johnson—Trainer's Tape

King O'Shea Company—Basketball Uniforms

Powers Mfg. Company—Award Jackets

Wilson Sporting Goods—Footballs and Basketballs

Spanjian of Pasadena—Football and Baseball
Uniforms

Sports Equipment Co.—SECO Athletic Supplies

Hillerich and Bradsby Company—Louisville Slugger
Bats

We are grateful to the above manufacturers who sponsor this ad.

HUNT'S ATHLETIC GOODS CO., INC.

"We Ship The Day You Buy"

MAYFIELD, KENTUCKY

BRADSHAW'S 5th QUARTER

Ralph Hacker interviews
Coach Charlie Bradshaw
following each Wildcat game

WVLK
590 on your dial

Hear a complete review of all the thrills, color and excitement of Kentucky football, by the man with the best seat in the house.

Sponsored by

Your partner in protection

Grange
MUTUAL CASUALTY CO.
COLUMBUS, OHIO

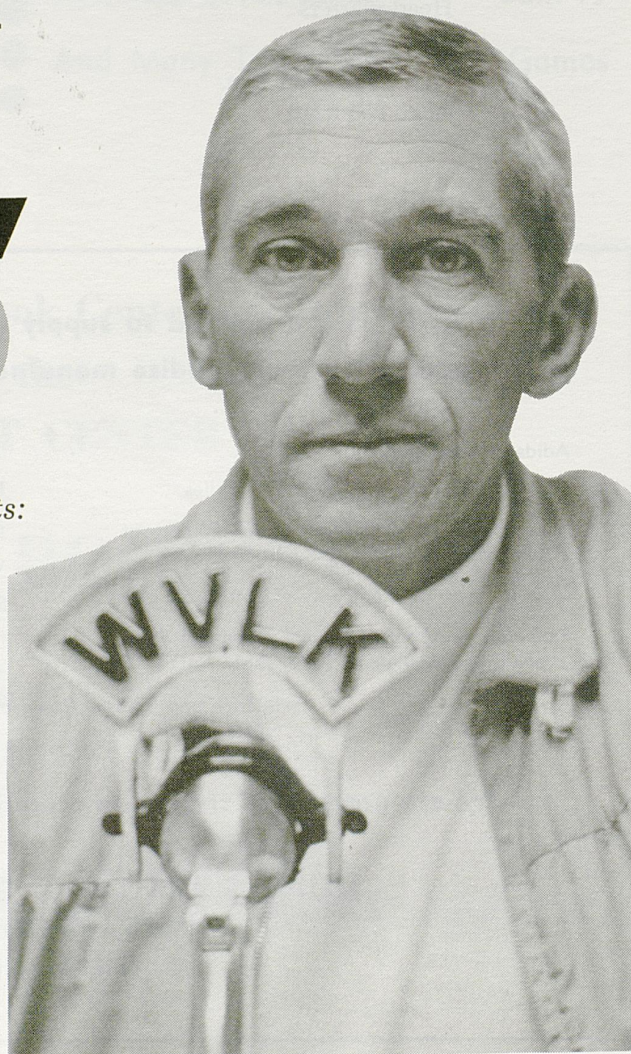
and Lexington Grange agents:

Boyd Insurance Agency
311 East High
Phone 255-5691

James Flynn and Associates
431 South Broadway
Phone 252-4464

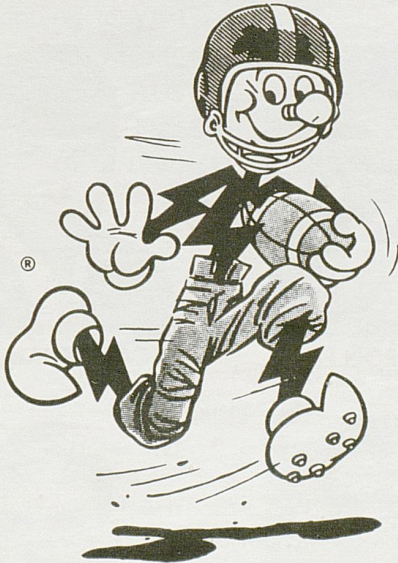
Fayette Insurance Agency
555 South Broadway
Phone 252-0680

Mid-City Insurance Agency
296 Southland Drive
Phone 278-7911



Kennedy Book Store

U.K. Shirts — Pennants — Decals
Textbooks — School Supplies



LET'S GO!

GO!
GO!
GO!

ALL ELECTRIC

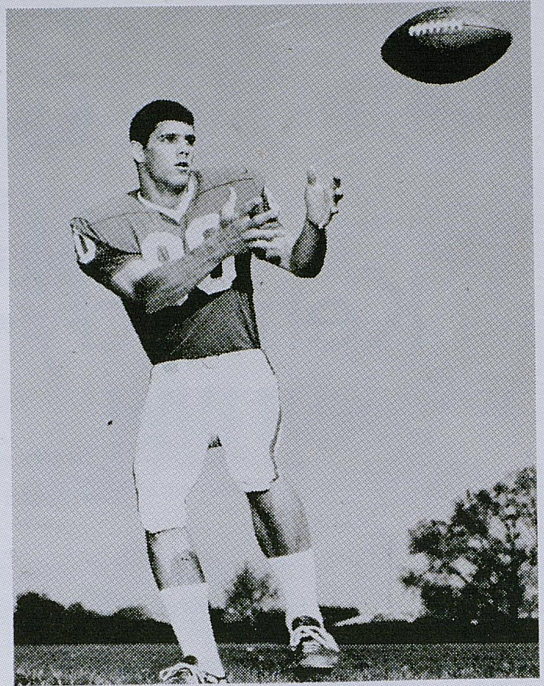
KU
SYMBOL
of
SERVICE

You meet the happiest people in an All-Electric home!

KENTUCKY UTILITIES COMPANY



DAVE HARDT



PHIL THOMPSON



ENTUCKY



JEFF VAN NOTE



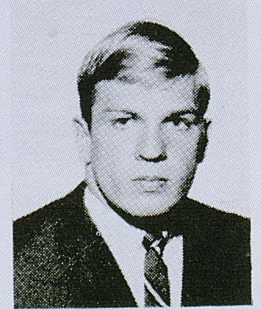
DAVE ROLLER



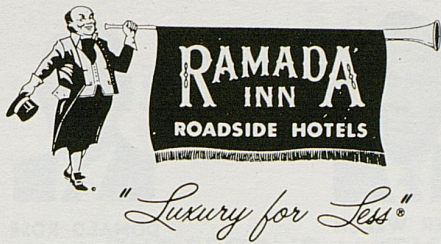
CARY SHAHID



RODDY WOLFE



MARTY YERDON



TWX: 606-255-8831

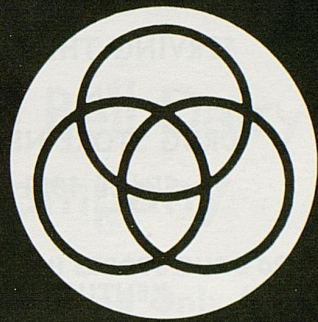
232 NEW CIRCLE ROAD, N. W. • LEXINGTON, KENTUCKY 40505 • PHONE 299-1211

MAGNA-GRAPHIC INC.

MANUFACTURERS OF FINE PRINTING PLATES
Offset — Photo-Engravings — Matrices
Four Color Process Separations

430 WEST SHORT ST.

LEXINGTON, KY.



Planning to Visit
HAWAII, MEXICO, WEST INDIES, HONG
KONG, AUSTRALIA, BERMUDA,
EUROPE, NASSAU, AFRICA, INDIA
OR ANYWHERE IN THE WIDE,
WIDE WORLD?

Contact

ALL-AMERICAN TOURS, Inc.

*Lexington's Oldest Travel Agency—
Established 1932*

Phoenix Hotel Bldg. Telephone 254-5729

We Have an Attractive Program of Cruises
and Tours (both escorted and independent)
to Practically all Parts of the World.

ALSO

WE SPECIALIZE IN AIRLINE RESERVATIONS
—FOR BOTH BUSINESS AND PLEASURE



You're Always Welcome At . . .

Begley's

WALGREEN AGENCY DRUG STORES

IN LEXINGTON

- ★ 69 Eastland Shopping Center
- ★ Northland Shopping Center
- ★ 878 East High Street
- ★ 404 Southland Drive
- ★ 1743 Alexandria Drive

SERVING THE BEST
IN
DRUG STORE NEEDS
SINCE 1921

20 DRUG STORES IN CENTRAL
KENTUCKY



MILLER WELCH



DONALD ROSE

CARPENTER-WARREN

INSURANCE AGENCY

Since 1927

137 N. Upper St. PHONE 252-6691 Lexington, Ky.

ALL FORMS
OF INSURANCE



STANLEY DOERTING



NORTH

1175 & NEWTOWN PIKE
233 - 0512



EAST

NEW CIRCLE ROAD &
WINCHESTER PIKE
252 - 2262



WEST

NEW CIRCLE ROAD &
NEWTOWN PIKE
252 - 6656

Two Big, Modern Department Stores To Shop In

BEN SNYDER

DOWNTOWN • EASTLAND SHOPPING CENTER

Open a Ben Snyder Charge Account for Fast, Easy Shopping

this is **2nd** NATIONAL BANK Country ...

where are you banking?

THE SECOND NATIONAL BANK AND TRUST COMPANY

4 Locations

Lexington

254-1161

DeBoor

Storage

Laundry

Dry Cleaning

Rug Cleaning

Buy U.S. Savings Bonds

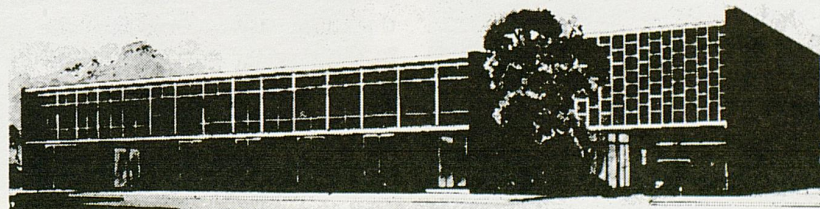
Dixie Bell Dairy Company

**"The Largest and Only Locally
Owned Dairy Serving
Central Kentucky"**

★ ★ ★

**315 North Limestone Street
LEXINGTON, KY.**

The Downtowner Motor Inn



LEXINGTON'S FINEST — 155 ROOMS — RESTAURANT — COCKTAIL LOUNGE — CONFERENCE ROOMS
PARK AT YOUR FRONT DOOR — TV — HI-FI — RADIO — PHONES — SWIMMING POOL

347 EAST MAIN — JUST EAST OF ROSE

U K Broadens Service to State In Community College System

Community Colleges in Kentucky occupy a unique position in higher education, with University membership on the one hand and community orientation on the other. Each college is an integral part of the University with the same standards of admission and operation as exist on the Lexington campus. Each college, through its local advisory board and other ties, relates itself to the educational needs of the community.

Until the early 1960's, University Centers in Kentucky served some of the functions generally attributed to community colleges, but their programs were closely related to the departments on the Lexington campus—primarily related to educational programs leading to the baccalaureate degree. The Community College Act was passed by the Kentucky General Assembly in 1962. On the recommendation of President John Oswald, and with the approval of the Board of Trustees, a University of Kentucky Community College System was formed.

The system includes Community Colleges at Northern (Covington), Ashland, Fort Knox, Henderson, Southeast (Cumberland), Elizabethtown, Prestonsburg, Somerset, Hopkinsville, Jefferson (Louisville), Maysville, Hazard, Paducah and Madisonville. The Lexington Technical Institute provides two-year career oriented programs on the Lexington campus. Student enrollment in the colleges for the fall of 1968 approaches 9,000.

The Community College System has roles aligned both with the task of higher education in the state and with the educational and cultural contributions to be made to the citizens of the communities in which the colleges are located. The colleges have been charged with three primary functions:

- 1) Offering transfer curricula for those who wish to complete the first two years of a baccalaureate program. Courses parallel the lower division offerings on the Lexington campus in most areas and are freely transferable to the Lexington campus or to other four-year colleges

or universities. Studies show that the student who completes two years at a community college and then transfers to the Lexington campus performs just as well or slightly better during the junior and senior year than does the student who starts his freshman year on the Lexington campus.

- 2) Offering two-year, career-oriented (associate degree) programs designed to prepare the student for immediate employment on a technical or semi-professional level. The Community Colleges in Kentucky are offering such programs in the areas of allied health, business and office technology, agricultural technology and engineering technology. The two-year associate degree programs stand between what the vocational school can do and that which is required in a baccalaureate program.
- 3) Providing continuing educational opportunities for the citizens of their immediate area. These include evening classes (credit and non-credit), workshops, seminars, short courses, current series, dramatic arts, exhibits, and folk festivals to meet inservice education and cultural needs as expressed by the community.

Dr. Ellis Hartford, Dean of the Community College System, indicates that "The Community College System fits very nicely into the concept of the Multi-versity—it allows the University to serve more people across the state. It facilitates other units of the University to serve the state in a manner similar to the services provided by the College of Agriculture." Dean Hartford believes "the Community College System is one of President Oswald's greatest achievements—he had many, but this is one of his greatest."

This "multiplicity of purpose determines the existence of a multi-versity," according to Dean Hartford; "the term refers to the complexity of a university rather than its structure."



Dean Hartford explains the mission of the Community College System.



Community College lounges provide a meeting and study area for students.

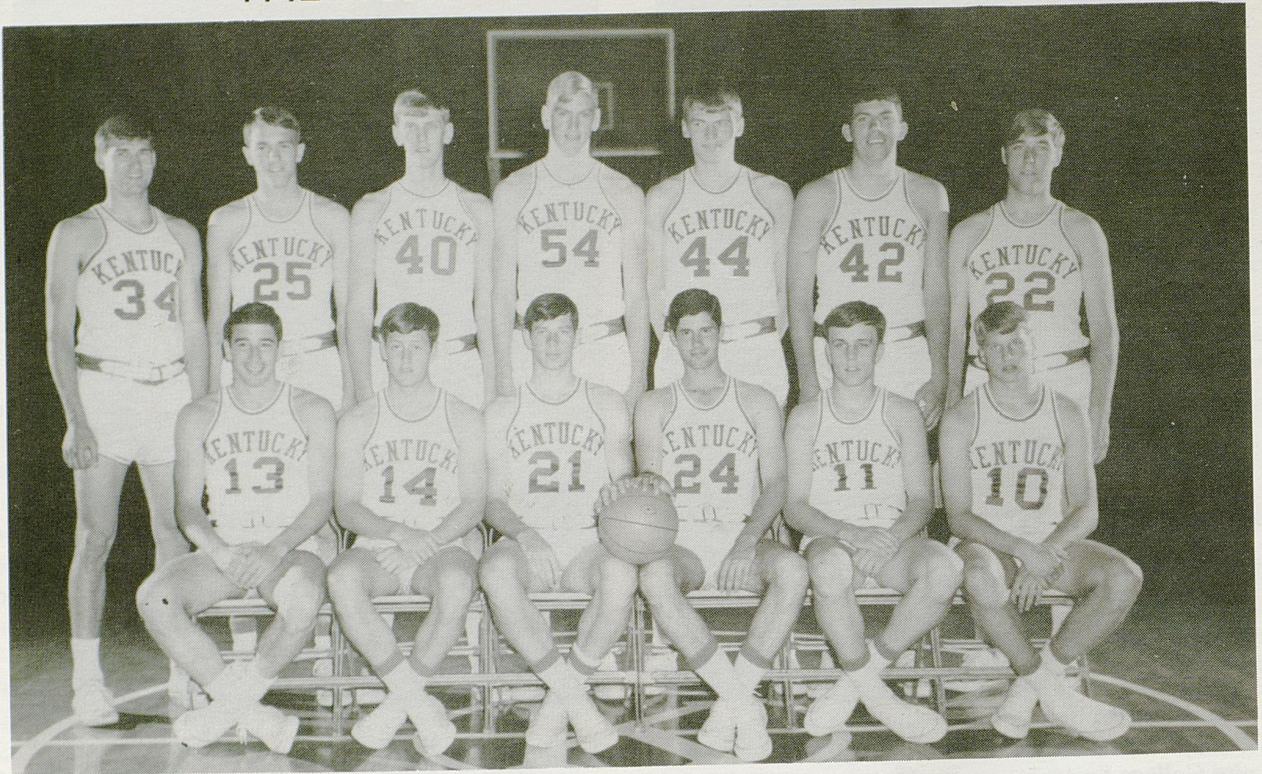


The Northern Community College at Covington, established in 1948 as a UK Center, overlooks the Ohio River.



The Community College library system draws on the Lexington campus for added volumes.

THE 1968-69 KENTUCKY WILDCATS



SEATED (left to right)—Phil Argento, Bill Busey, Terry Mills, Greg Starrick, Bob McCowan, and Jim Dinwiddie. STANDING—Mike Casey, Larry Steele, Clint Wheeler, Art Laib, Dan Isel, Randy Pool, and Mike Pratt.

UNIVERSITY OF KENTUCKY BASKETBALL SCHEDULE 1968-69

Date	Opponent	Site
1968		
Nov. 30 (Sat.)	XAVIER	Lexington
Dec. 2 (Mon.)	Miami	Oxford, Ohio
Dec. 7 (Sat.)	N. CAROLINA	Lexington
Dec. 14 (Sat.)	Pennsylvania	Philadelphia
Dec. 20 (Fri.)	U.K.I.T.	Lexington
Dec. 21 (Sat.)	(Michigan, Army, Bradley, Kentucky)	
Dec. 28 (Sat.)	Notre Dame	Louisville
Dec. 31 (Tues.)	Wisconsin	Chicago
1969		
Jan. 4 (Sat.)	Ole Miss	Oxford, Miss.
Jan. 6 (Mon.)	Miss. State	Starkville
Jan. 11 (Sat.)	FLORIDA	Lexington
Jan. 13 (Mon.)	GEORGIA	Lexington
Jan. 18 (Sat.)	Tennessee	Knoxville
Jan. 25 (Sat.)	L.S.U.	Baton Rouge
Jan. 27 (Mon.)	Alabama	Tuscaloosa
Feb. 1 (Sat.)	VANDERBILT	Lexington
Feb. 3 (Mon.)	AUBURN	Lexington
Feb. 8 (Sat.)	OLE MISS	Lexington
Feb. 10 (Mon.)	MISS. STATE	Lexington
Feb. 15 (Sat.)	Florida	Gainesville
Feb. 17 (Mon.)	Georgia	Athens
Feb. 22 (Sat.)	L.S.U.	Lexington
Feb. 24 (Mon.)	ALABAMA	Lexington
Mar. 1 (Sat.)	Vanderbilt	Nashville
Mar. 3 (Mon.)	Auburn	Auburn
Mar. 8 (Sat.)	TENNESSEE	Lexington

Tournament Tickets \$4.00 Per Night
When ordering, make checks payable to the
U.K. ATHLETICS ASSOCIATION



BARON ADOLPH RUPP
Starting 39th Season

SOUTHLAND SPORT SHOP

Distributors of

Riddell, Rawlings, Wilson, and Spalding Sporting Goods

Adidas Track Shoes Speedo Cramer Products

Plenty of Free Parking Space

Gene Stokley — In The Southland Shopping Center — Dick Wallace

P.O. BOX 8251

PHONE 277-3977

LEXINGTON TRANSIT CORP.

(Your City Bus Company)

RIDE THE BUS TO AND FROM
THE GAME

Busses will be parked at the stadium after
each game going the following routes:

**EUCLID
HOLLYWOOD
ROSEMONT
DOWNTOWN**

(Transfer downtown to
all bus lines)

IF YOU ARE GOING IN A GROUP
CHARTER A BUS

PHONE 255-7756



**145 N. UPPER ST.
1220 HARRODSBURG RD.
2121 NICHOLASVILLE RD.**

HOWARD JOHNSON'S

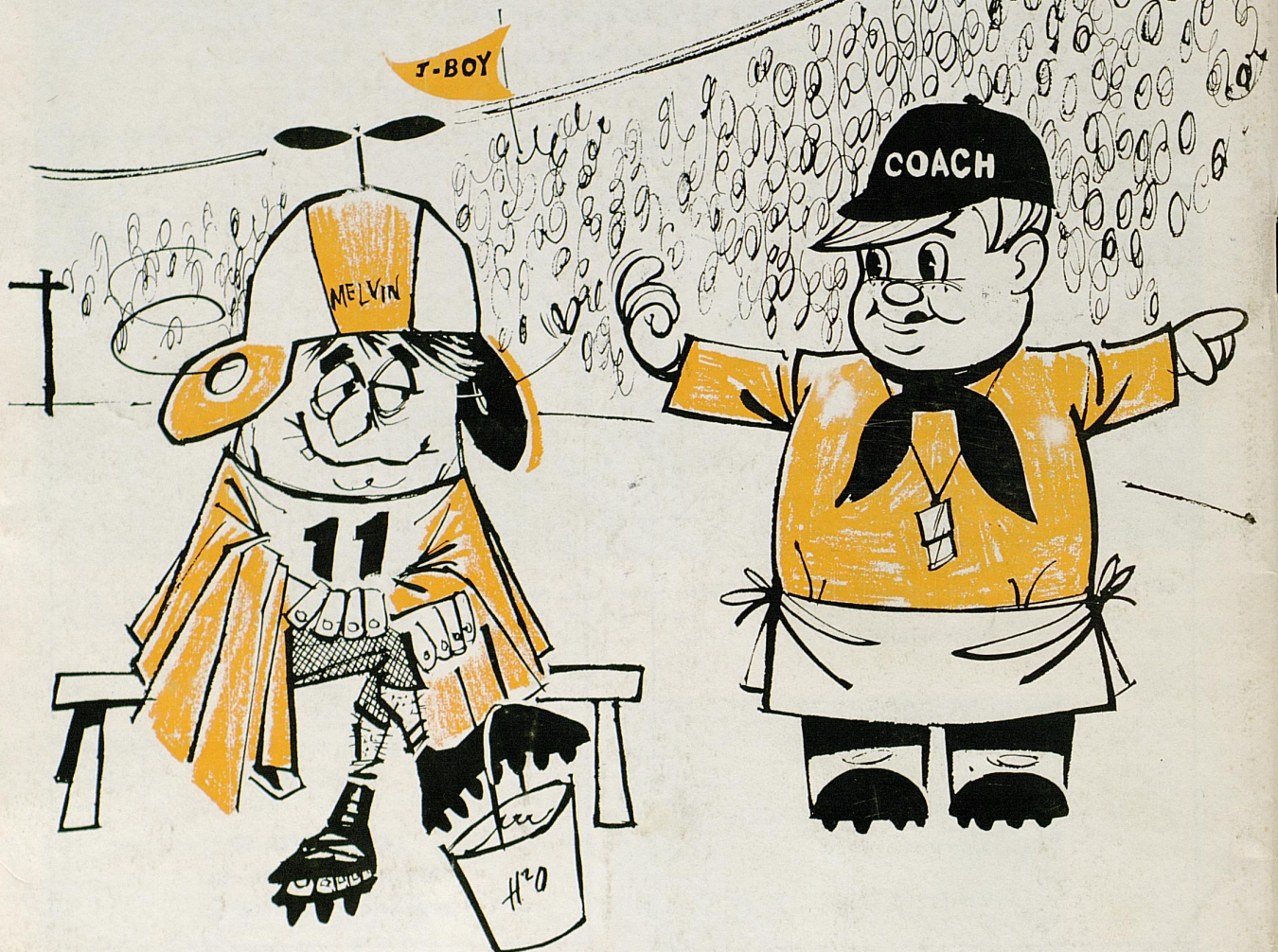
Motor Lodge



Nicholasville Road, U.S. 27, South
Phone 277-1191, Lexington, Kentucky

LANDMARK FOR SLEEPY AMERICANS

after the game...



get off the
bench, join us
at...



SIX CONVENIENT LOCATIONS