

KEY

- IRON MAIL BOX ROOF
- METAL CORNICE
- WOOD SHED
- WOOD SHED ON ROOF
- FRAME PARTITION
- STANDARD
- OPENS WITH LOCK DOOR
- IRON SHUTTERS
- WINDOW - 1ST STORY
- WINDOW - 2ND STORY
- 25' x 41'
- STABLE
- RELIGIOUS
- BRICK
- STONE
- BROWN
- ACCRE
- GREEN
- SPECIALS

INDICATE RELATIVE HEIGHTS

FIRE STATION, ALONG HIGHWAY

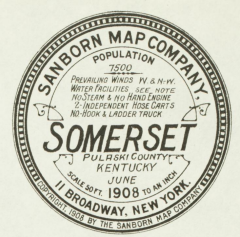
ALTERNATE STREET NUMBERS ARE ACTUAL

CONSECUTIVE STREET NUMBERS ARE ARBITRARY

WATER FACILITIES:
Somerset Water Works, Gravity & direct pumping system. Supply from Pheasant Creek is pumped to reservoir (capacity 800,000 gallons) located on 18th mile N.E. of Court No. 1 by one Lindlow-Dunn-Cordell duplex pump, capacity 500,000 gallons in 24 hours size 40" x 8' x 22' and one Lindlow-Dunn-Cordell duplex pump, capacity 500,000 gallons in 24 hours size 40" x 8' x 22', 6 miles at 0.58" W. Pipes, 60-90 lbs. average pressure at Court No. 100 lbs. per square inch at Pheasant Depot 100 lbs. per square inch. System land in 1880. Average daily consumption 335,000 gallons.

FIRE DEPT:
Paid men, 17 volunteer men. COMPANY No. 1 on Maple N.E. 1 paid man, 9 volunteer men, 2 horses, 1 combination hose, H.S.L. and chemical wagon carries 800 hose, 3 wagons, chemical cans, 2 extension ladders. COMPANY No. 2 on S. Main St. 1 paid man, 8 volunteer men, 1 horse, 1 combination hose, H.S.L. and chemical wagon carries 800 hose, two 10 gallon chemical cans, 1 extension ladder. Dept. has 700 Reserve hose, Dept. Houses equipped with spritzing harnesses.

NOTE: Fire Dept. equipment as noted above is being installed at time of survey but not in condition for use, present service is two street hose carts carrying 800 hose each, fire alarm public bells and whistles. Principal streets macadamized. Public lights electric.



LEGEND OF COLORED AREAS

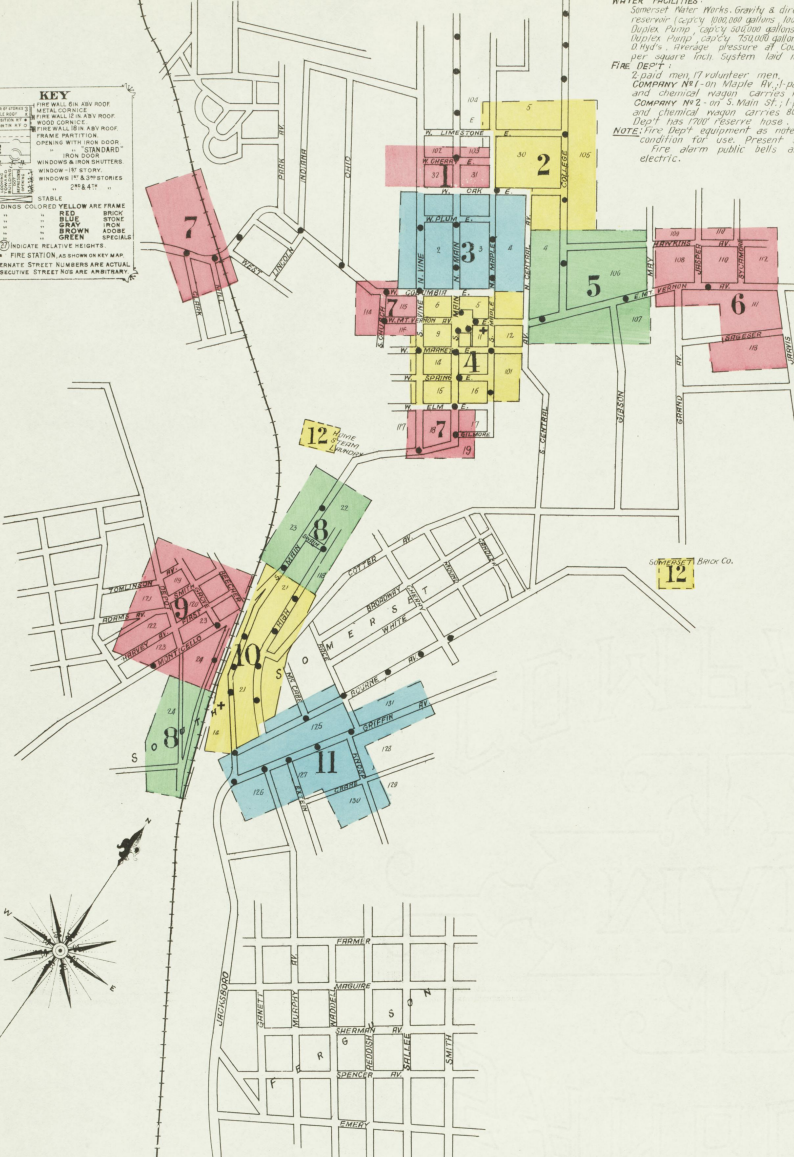
See Street Directory

Blue, 3' 1/2' High

Green, 4' 1/2' High

Red, 5' 1/2' High

1 3 3 0 6



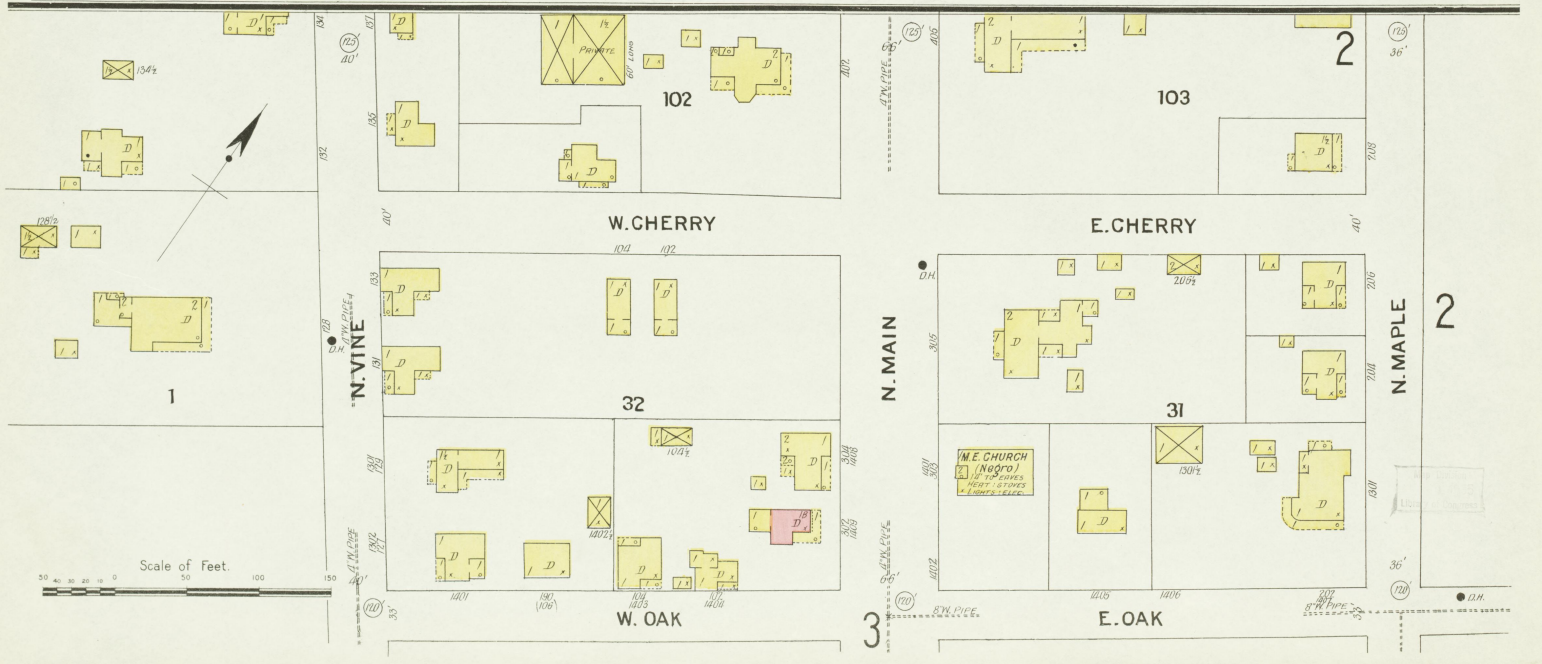
INDEX

STREETS.	Street	Maple, N.	100-111	C	Sheet
Adams Ave.	A	112-137	100-111	4	4
Beecher	B	200-208	200-208	3	3
Bourne Ave.	9	201-209	201-209	*2	4
		210-309	210-309	2	4
		100-313	100-313	C. O. T. P. R. R. Freight Depot	4
		100-217	100-217	Passenger Station	10
		100-105	100-105	Repair Shop, &c.	12
		100-202	100-202	Steam Heating Plant	10
		101-201	101-201	Cooch House	8
Casson Ave., see Central	C	McCabe	100-110	10	4
Central Ave., N.	4	Mill	101-205	7	4
	5	Monticello Ave.	9 & 10	8 & 9	9
	3	Mt. Vernon Ave., E.	1-130	Crescent Lumber Co.	9
	2		200-316	Cumberland Gro. Co.	9
	4 & 5		315-624	Fire Department	4 & 10
Cherry, E.	100-111	1	100-110	Fourth Ward Public School	9
Church, N.	100-111	1	100-110		9
Clark, S.		7	101-109		10
College	100-203	5	204-210		2
	120-308	2	211-220		2
Columbia, E.	3 & 4	W.	101-109		3
Cutter, W.	3 & 4	W.	101-109		3
Crane	100-123	11			3
Elm, E.	100-110	4			4
	101-105	7			4
	100-110	7			4
Extein	101-111	7			4
First		9			4
Gibson Ave.	100-113	7			4
Gilmore	300-417	7			4
Grand Ave.	100-150	11			4
Griffin, Grove		9			4
Harvey Ave.	100-121	5			4
Hawkins Ave.	200-211	6			4
High	100-213	8			4
	212-311	10			4
	903-925, arbitrary	10			4
Jasper	100-203	6			4
Jarvis	201-209	6			4
Knosp		11			4
Limestone, E.	200-219	2			4
Main, N.	1-20	4			4
	100-211	3			4
	300-405	1			4
	1-213	4			4
	300-417	7			4
	503-620	8			4
	621-692	10			4
	603-710	11			4
Maple, N.	100-111	4			4
Market, E.	100-105	4			4
May	100-202	5			4
McCabe	101-201	6			4
McCabe	100-110	4			4
Mill	101-205	7			4
Monticello Ave.	9 & 10	8 & 9			4
Mt. Vernon Ave., E.	1-130	4			4
	200-316	5			4
	315-624	6			4
	100-110	4			4
Murphy Ave.	100-110	4			4
Oak, E.	100-202	4			4
	101-205	3			4
	204-210	2			4
	211-220	2			4
	100-110	4			4
	101-109	3			4
Plum, E.		3			4
Public Square		4			4
Race		11			4
Railroad		8 & 9			4
Sageser	100-116	4			4
Second, see Spring		8 & 9			4
Sinking		8 & 9			4
Smith	100-109	4			4
Spring, E.	100-109	4			4
Sycamore	100-110	4			4
Swain	400-413	7			4
Third, see Market		9			4
Tomlinson Ave.		9			4
Vine, N.	1-7	4			4
	2-8	3			4
	100-125	3			4
	130-137	3			4
	100-110	4			4
	101-111	4			4
	112-309	4			4
	400-413	7			4
Water, see Vine		W			4

SPECIALS.

STREETS.	Sheet	Maple, N.	100-111	C	Sheet
Adams House	7				4
Baptist Churches, Church, (Negro)	3 & 10				4
Taylor, G. P., Co., Flour, Feed, &c.	9				4

* Indicates only one side of Street shown.



JUNE 1908
SOMERSET
KY.

104

5

E. LIMESTONE

103

N. MAPLE

1

E. CHERRY ST

30

COLLEGE

105

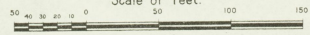
E. OAK

3

N. CENTRAL AV.

4

Scale of Feet.

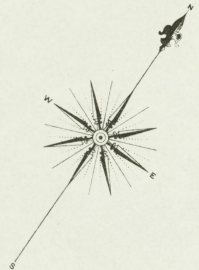


5

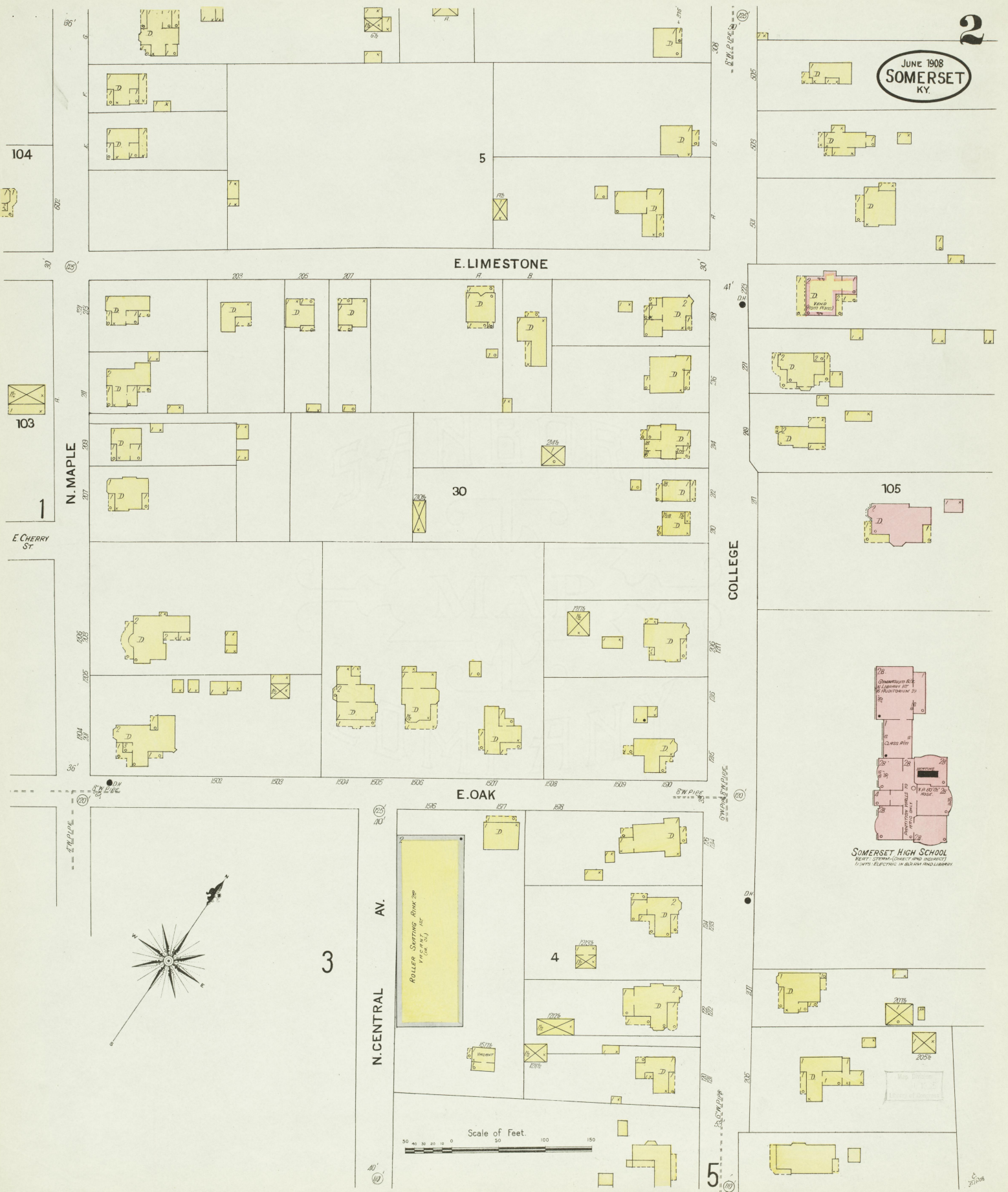
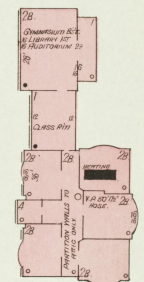
SOMERSET HIGH SCHOOL

RETT. STEPH. CORRECT AND IMPROVED

11000 ELECTRIC IN 800-000 AND LIBRARY



ROLLER SHEDDING RINK 200
100' (100' 50') 100'



2

N. CENTRAL

AV. (CASSON

5

3

JUNE 1908
SOMERSET
KY.

2

4

N. MAPLE

(CRAB ORCHARD)

4

34

E. PLUM (E. SIXTH)

E. COLUMBIA

E. OAK

N. MAIN

33

2

W. OAK

W. PLUM

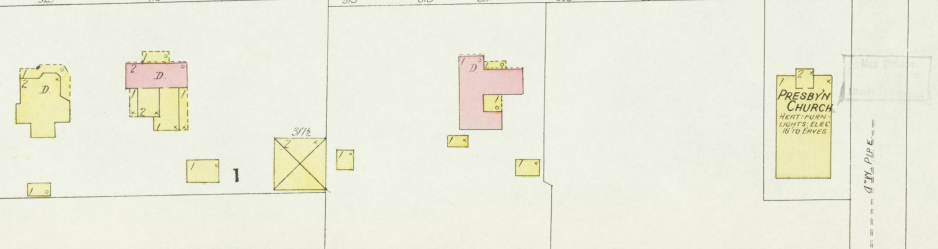
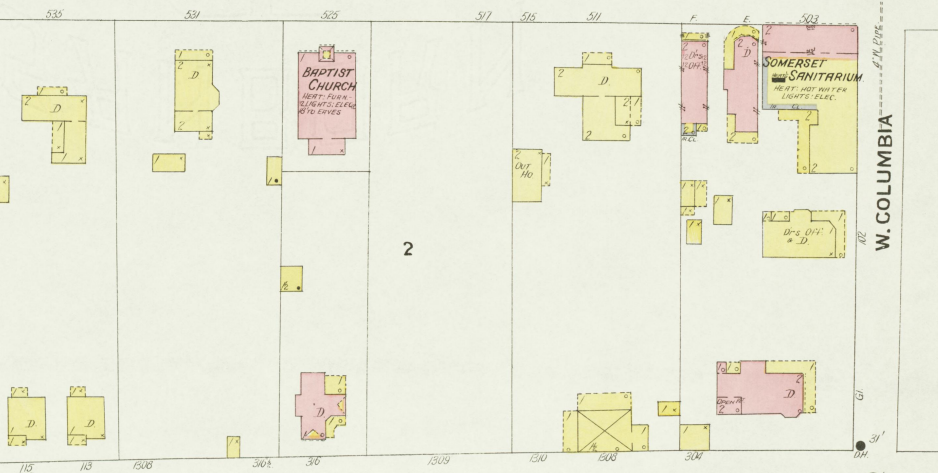
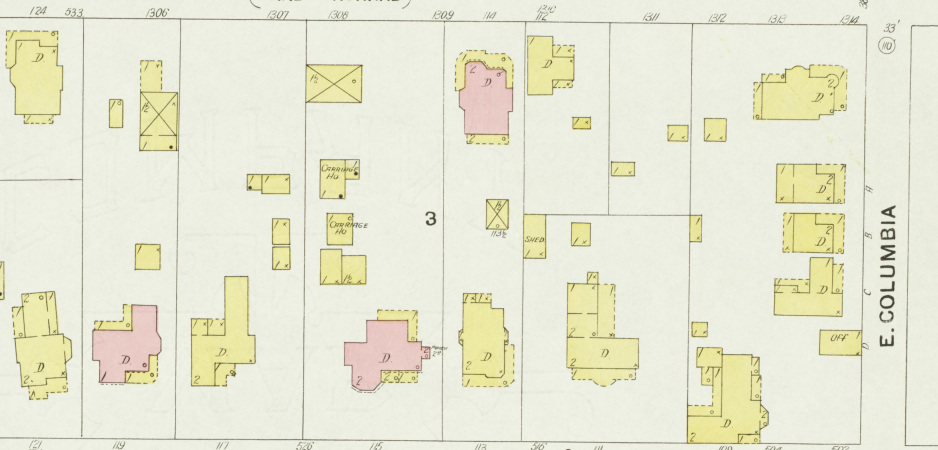
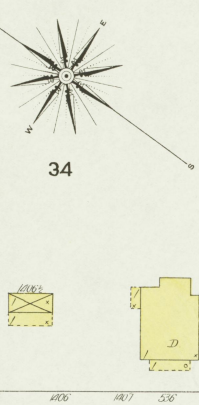
W. COLUMBIA

N. VINE

1

7

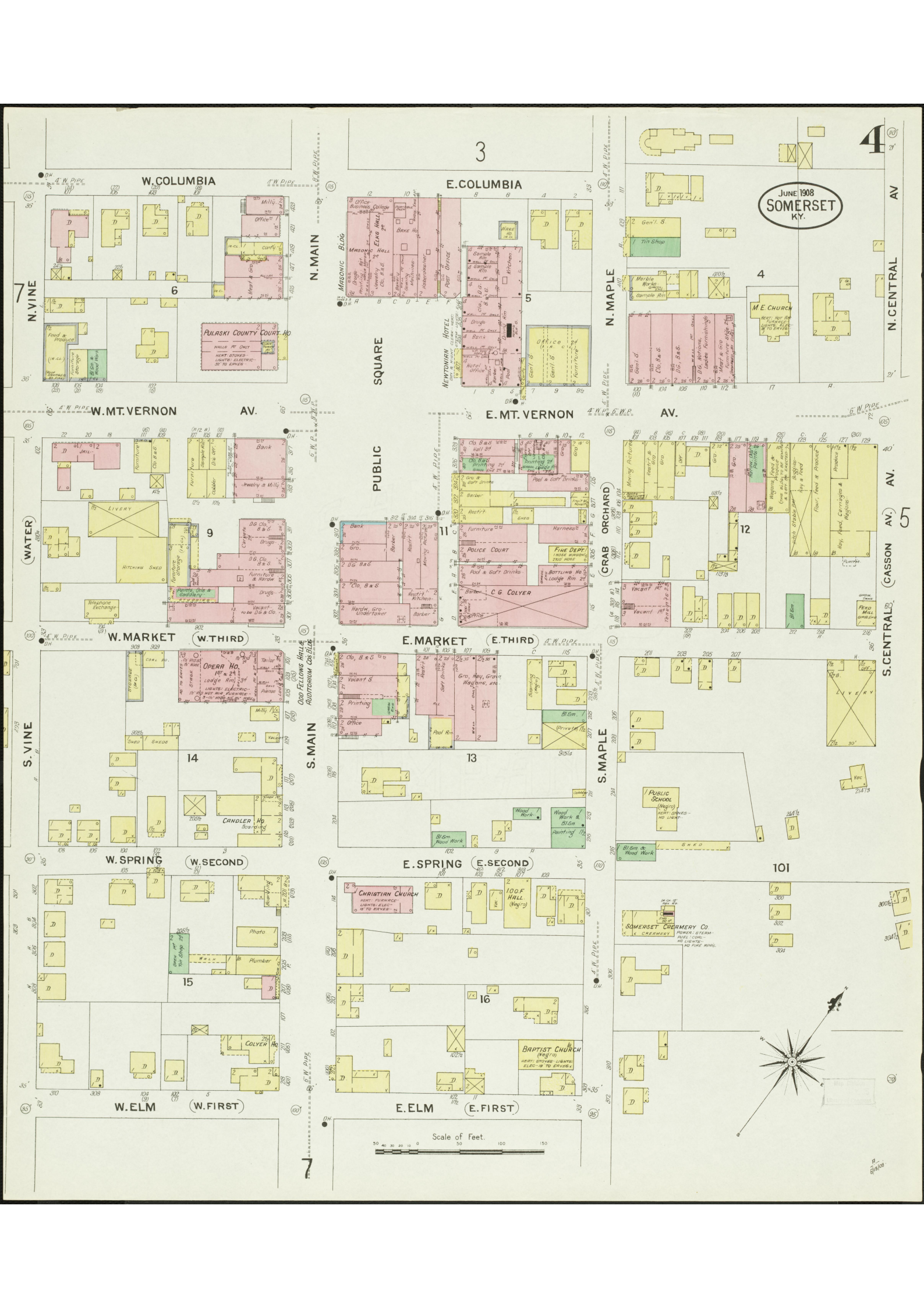
Scale of Feet.



BAPTIST CHURCH
HEAT, LIGHT, WATER,
ELECT. ELEV.
8 1/2 ENDS

SOMERSET
SANITARIUM
HEAT, HOT WATER,
ELECT. ELEV.

PRESBYT. CHURCH
HEAT, LIGHT, WATER,
ELECT. ELEV.
8 1/2 ENDS



JUNE 1908
SOMERSET
KY.

SQUARE

PUBLIC

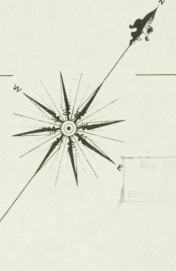
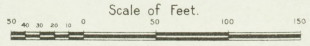
ORCHARD

GRAB

S. MAIN

S. MAPLE

7



CHRISTIAN CHURCH
HEAT STOVE
LIGHTS
ELECT. IN TO ENERS.

100 F. HALL
(Way)

BAPTIST CHURCH
HEAT STOVE
LIGHTS
ELECT. IN TO ENERS.

SOMERSET CREAMERY CO.
ICE CREAMERY
MILK FACTORY
ELECT. IN
HEAT STOVE
NO LIGHTS
NO FIRE WARE.

13
14
15
16

17
18
19
20
21
22
23
24
25
26
27
28
29
30
31
32
33
34
35
36
37
38
39
40
41
42
43
44
45
46
47
48
49
50
51
52
53
54
55
56
57
58
59
60
61
62
63
64
65
66
67
68
69
70
71
72
73
74
75
76
77
78
79
80
81
82
83
84
85
86
87
88
89
90
91
92
93
94
95
96
97
98
99
100

11
12
13
14
15
16
17
18
19
20
21
22
23
24
25
26
27
28
29
30
31
32
33
34
35
36
37
38
39
40
41
42
43
44
45
46
47
48
49
50
51
52
53
54
55
56
57
58
59
60
61
62
63
64
65
66
67
68
69
70
71
72
73
74
75
76
77
78
79
80
81
82
83
84
85
86
87
88
89
90
91
92
93
94
95
96
97
98
99
100

101
102
103
104
105
106
107
108
109
110
111
112
113
114
115
116
117
118
119
120
121
122
123
124
125
126
127
128
129
130
131
132
133
134
135
136
137
138
139
140
141
142
143
144
145
146
147
148
149
150
151
152
153
154
155
156
157
158
159
160
161
162
163
164
165
166
167
168
169
170
171
172
173
174
175
176
177
178
179
180
181
182
183
184
185
186
187
188
189
190
191
192
193
194
195
196
197
198
199
200

3
4
5
6
7
8
9
10
11
12
13
14
15
16
17
18
19
20
21
22
23
24
25
26
27
28
29
30
31
32
33
34
35
36
37
38
39
40
41
42
43
44
45
46
47
48
49
50
51
52
53
54
55
56
57
58
59
60
61
62
63
64
65
66
67
68
69
70
71
72
73
74
75
76
77
78
79
80
81
82
83
84
85
86
87
88
89
90
91
92
93
94
95
96
97
98
99
100

4
5
6
7
8
9
10
11
12
13
14
15
16
17
18
19
20
21
22
23
24
25
26
27
28
29
30
31
32
33
34
35
36
37
38
39
40
41
42
43
44
45
46
47
48
49
50
51
52
53
54
55
56
57
58
59
60
61
62
63
64
65
66
67
68
69
70
71
72
73
74
75
76
77
78
79
80
81
82
83
84
85
86
87
88
89
90
91
92
93
94
95
96
97
98
99
100

6
7
8
9
10
11
12
13
14
15
16
17
18
19
20
21
22
23
24
25
26
27
28
29
30
31
32
33
34
35
36
37
38
39
40
41
42
43
44
45
46
47
48
49
50
51
52
53
54
55
56
57
58
59
60
61
62
63
64
65
66
67
68
69
70
71
72
73
74
75
76
77
78
79
80
81
82
83
84
85
86
87
88
89
90
91
92
93
94
95
96
97
98
99
100

9
10
11
12
13
14
15
16
17
18
19
20
21
22
23
24
25
26
27
28
29
30
31
32
33
34
35
36
37
38
39
40
41
42
43
44
45
46
47
48
49
50
51
52
53
54
55
56
57
58
59
60
61
62
63
64
65
66
67
68
69
70
71
72
73
74
75
76
77
78
79
80
81
82
83
84
85
86
87
88
89
90
91
92
93
94
95
96
97
98
99
100

14
15
16
17
18
19
20
21
22
23
24
25
26
27
28
29
30
31
32
33
34
35
36
37
38
39
40
41
42
43
44
45
46
47
48
49
50
51
52
53
54
55
56
57
58
59
60
61
62
63
64
65
66
67
68
69
70
71
72
73
74
75
76
77
78
79
80
81
82
83
84
85
86
87
88
89
90
91
92
93
94
95
96
97
98
99
100

15
16
17
18
19
20
21
22
23
24
25
26
27
28
29
30
31
32
33
34
35
36
37
38
39
40
41
42
43
44
45
46
47
48
49
50
51
52
53
54
55
56
57
58
59
60
61
62
63
64
65
66
67
68
69
70
71
72
73
74
75
76
77
78
79
80
81
82
83
84
85
86
87
88
89
90
91
92
93
94
95
96
97
98
99
100

JUNE 1908
SOMERSET
KY.

5

MAY

6

107

106

GIBSON

HAWKINS
AV.

E. MT. VERNON
AV.

COLLEGE

20

4

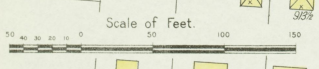
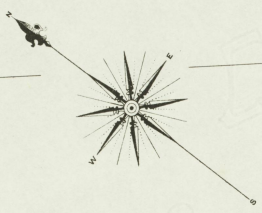
3
N. CENTRAL
AV.

(CASSON
AV.)

4

S. CENTRAL
AV.

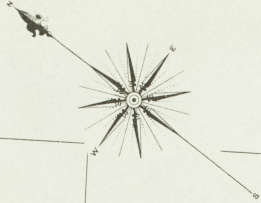
AV.



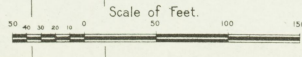
2

AV.

60'



JUNE 1908
SOMERSET
KY.



5

6

6

6

6

6

6

6

6

6

112

SYCAMORE

110

JASPER

109

108

MAY

111

JARVIS AV.

GRAND AV.

HAWKINS AV.

E. MT. VERNON

SAGESER

113

JARVIS AV.

6

SAGESER

SAGESER

SAGESER

SAGESER

SAGESER

SAGESER

SAGESER

SAGESER

SAGESER

SAGESER

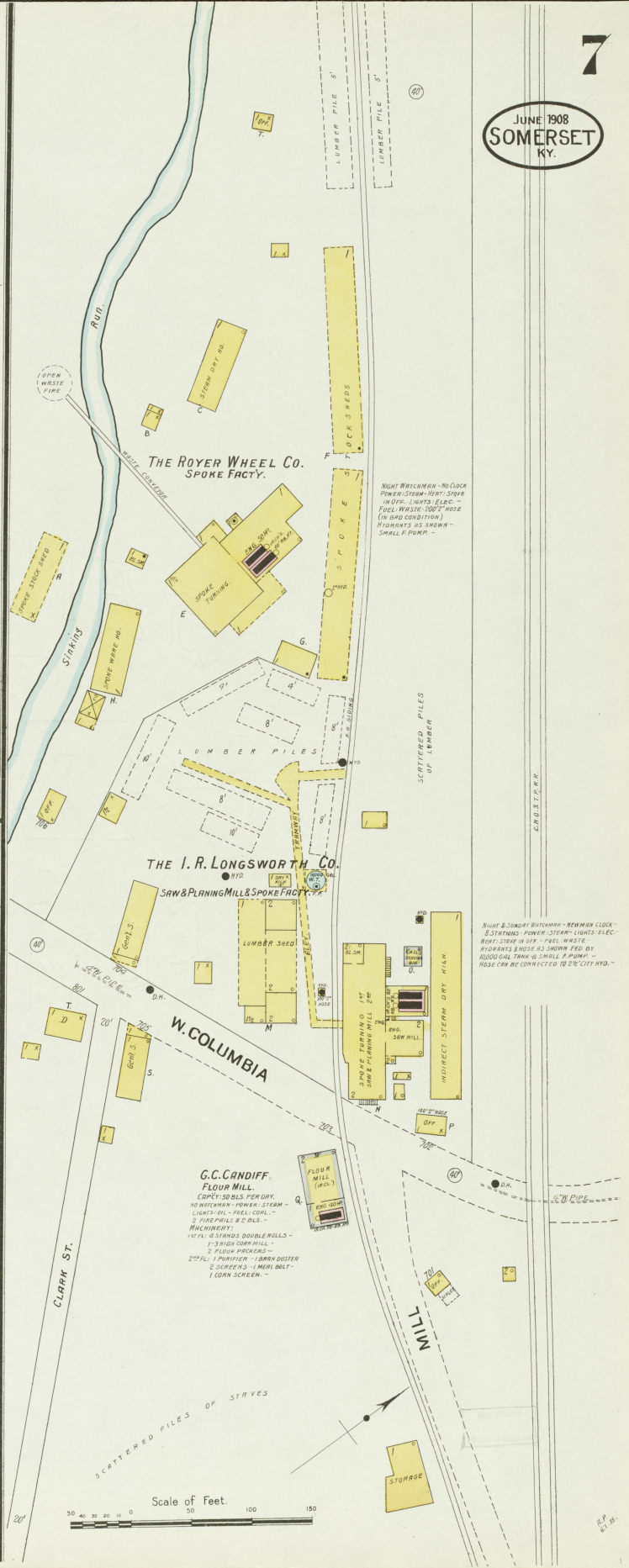
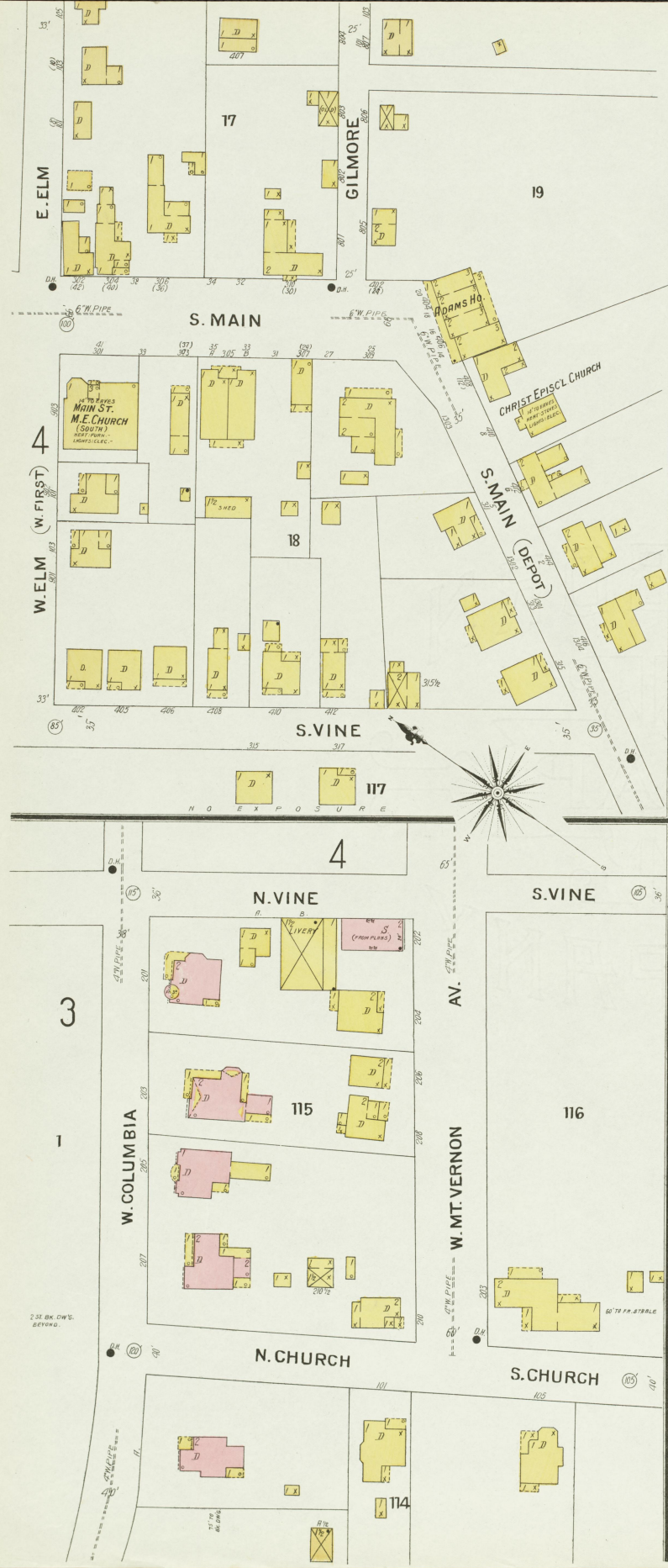
SAGESER

SAGESER

SAGESER

SAGESER

SAGESER



C.N.O. & T. P.R.R.

STANDARD OIL CO.

RAILROAD

SOMERSET WATER LIGHT & TRACTION CO. Inc.
ICE PLANT & POWER HO.

MAN ALWAYS ON DUTY
POWER, STEAM, LIGHTS, ETC.
ELECT. CODES: 2' W.V. 8.50'
2' W.V. 5E

24

SINKING Run

FORMERLY SOMERSET ELEC. LIGHT PLANT

118

HIGH

10

22

S. MAIN

DEPOT

23

CRESCENT LUMBER CO.

NO WATCHMAN
POWER, STEAM
FUEL, WASTE
NO FIRE APPARATUS

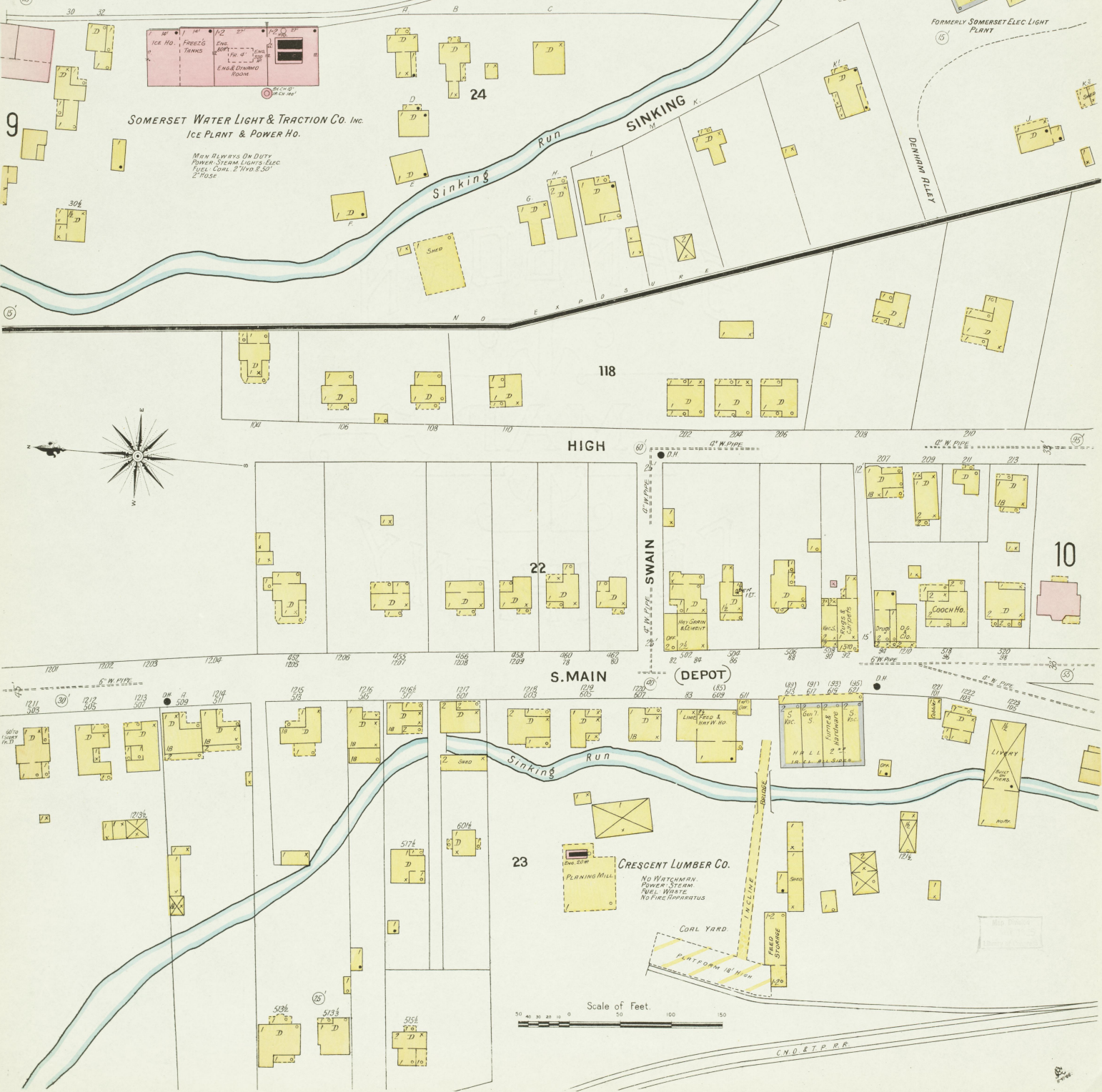
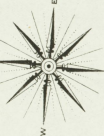
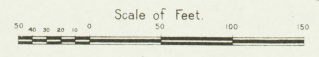
PLANNING MILL

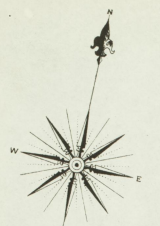
COAL YARD

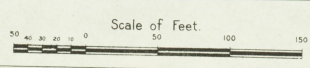
FIELD STORAGE

PLATFORM 16' HIGH

C.N.O. & T. P.R.R.



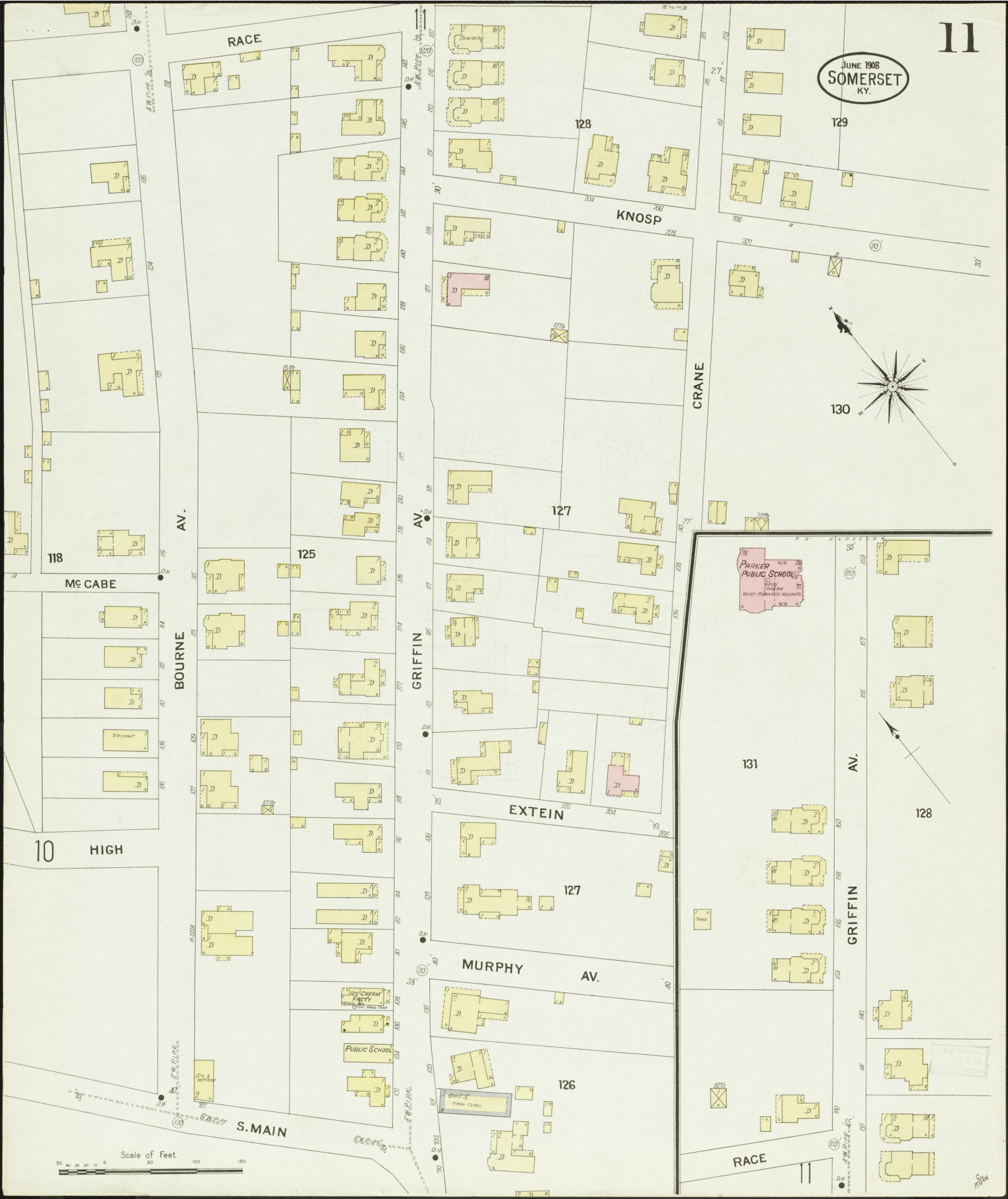




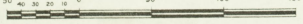
C. N. O. & T. P. R. R.

4/2008

JUNE 1908
SOMERSET
KY.



Scale of Feet



RACE

11

