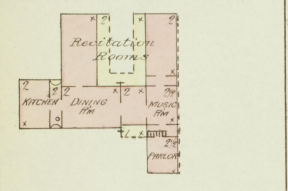


BARDSTOWN KY. JULY 1886
 WE THE UNDERSIGNED HAVE EXAMINED THE MAP OF BARDSTOWN KY.
 MADE BY THE SANBORN MAP & PUBLISHING CO. (LIMITED) OF N.Y.
 AND ENDORSE IT AS BEING ACCURATE & COMPLETE.

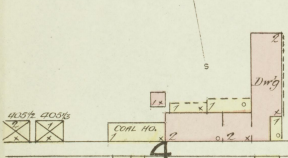
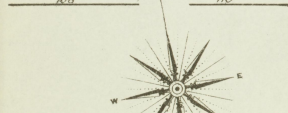
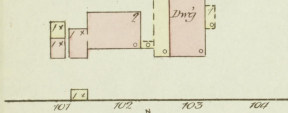
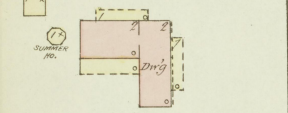
*Eugene Wilson
 Dealer & Barries
 A. J. Mattingly*

BEALL

BARDSTOWN FEMALE ACADEMY



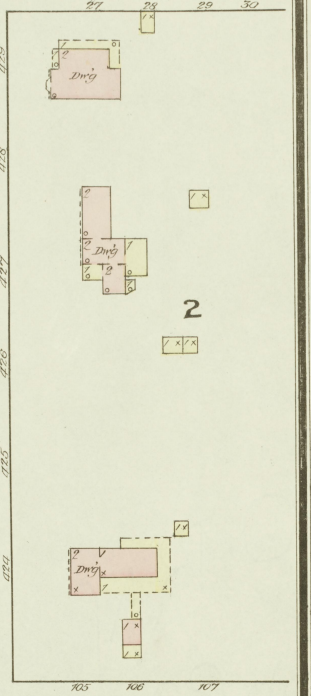
1



BROADWAY

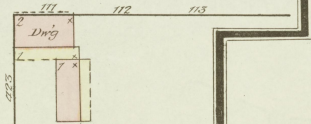
SEE SHEET No. 2

3RD OR

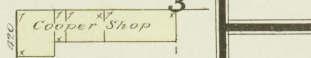


2

CHESTNUT



3



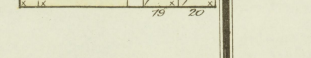
COOPER SHOP

SCATTERED FILES OF STIVES



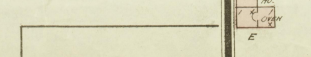
COOPER SHOP

SCATTERED FILES OF STIVES

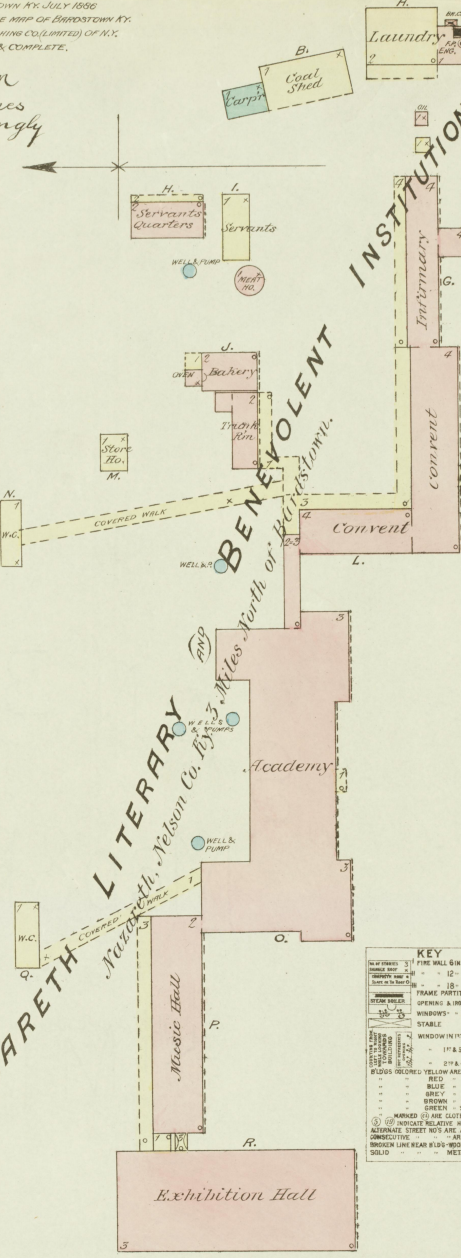


COOPER SHOP

COOPER SHOP



MARKET HO.



*Nazareth Literary
 Nelson Co. Ky. 3 1/2 Miles North of Bardstown*

KEY

1. THE WALL OR ROOF
 2. FRAMES, TRusses & Joists
 3. FRAME PARTITION
 4. OPERING & IRON DOOR
 5. STABLE
 6. WINDOW IN 1ST STORY
 7. 1ST & 2ND "

8. YELLOW BRICK AND FRAME
 9. RED - BRICK
 10. BLUE - STONE
 11. BROWN - BRICK
 12. WHITE - BRICK
 13. GREEN - BRICK
 14. SANDY RELIEF SURFACES
 15. ALTERNATE STREET NOS ARE ACTUAL
 16. HORIZONTAL - HORIZONTAL
 17. BROKEN LINE BEAR EIGHT HORIZONTAL CORNER
 18. METAL

SANBORN MAP & PUBLISHING CO. LIMITED
 119 BROADWAY
 NEW YORK

Population 5500
 Steam & Hand Engine
 Independent Fire LARTS
 Water Facilities NOT GOOD
 STREETS PAVED
 Prevailing Winds SW

BARDSTOWN
 JULY 1886 KY.

SCALE 50 FT. TO AN INCH

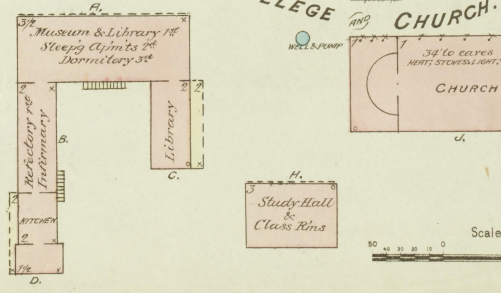
Copyright 1885, by Sanborn Map & Publishing Co. Limited

INDEX.

SPECIALS.

B	Baptist Church,	2
B	Bardstown Female Academy,	1
B	Beam, D. M., Distillery,	3
B	" J. H., "	3
B	Belle of Nelson Distillery,	4
B	Brown & Bros., "	3
C	Carother & Bros, Lumber Yard,	2
C	Central Hotel,	2
C	Chapeze, A. & R., Distillery,	6
C	Court House & Jail,	2
D	Dant, J. B., Distillery,	4
G	Gwyn Spring Distillery,	3
H	Hagen, G. M., Distillery,	3
H	Hayden, R. B., & Co., Distillery,	6
L	Lancaster, R. B., Distillery,	3
L	S. P., "	3
M	McGee, L., Distillery,	3
M	McKenzie, H., Distillery,	4
M	Manning & Moore, Distillery,	3
M	Methodist Church,	2
M	Miles, E. L., & Co., Distilleries,	3
M	Miller, N., & Son, Distillery,	3
M	Murphy, Barber & Co., Distillery,	6
M	Hotel,	2
N	Nazareth Literary & Benev. Institution, ..	1
N	Nelson County Distilling Co.,	3
N	New Hope Distillery Co.,	4
N	Newman Hotel,	2
O	O'Bryan Hotel,	2
P	Petrey, G., Flour Mills,	2
S	St. Joseph College & Church,	1
S	" W. B. & Co., Distillery,	5
S	Sisco, J. W., Carriage Factory,	2
S	Sutherland H., Distillery,	5
W	Walker, F. G., Distillery,	5

ST. JOSEPH COLLEGE CHURCH.



Scale of Feet.

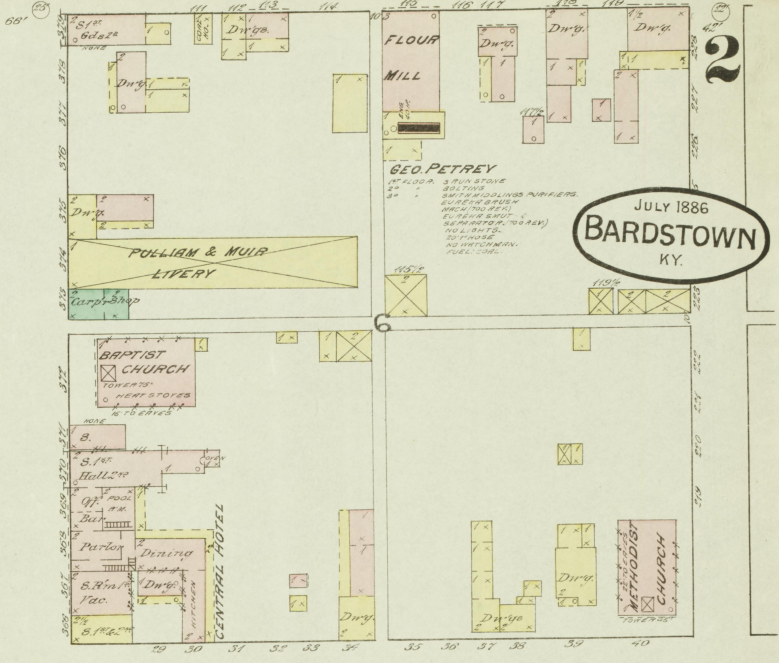
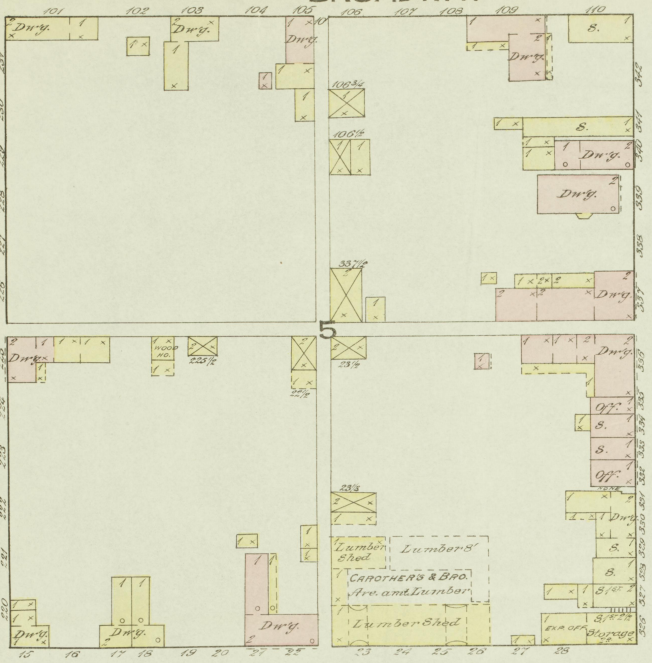
MARKET ST.

Map Division
 21 JUL 1886
 Library of Congress

BROADWAY SEE

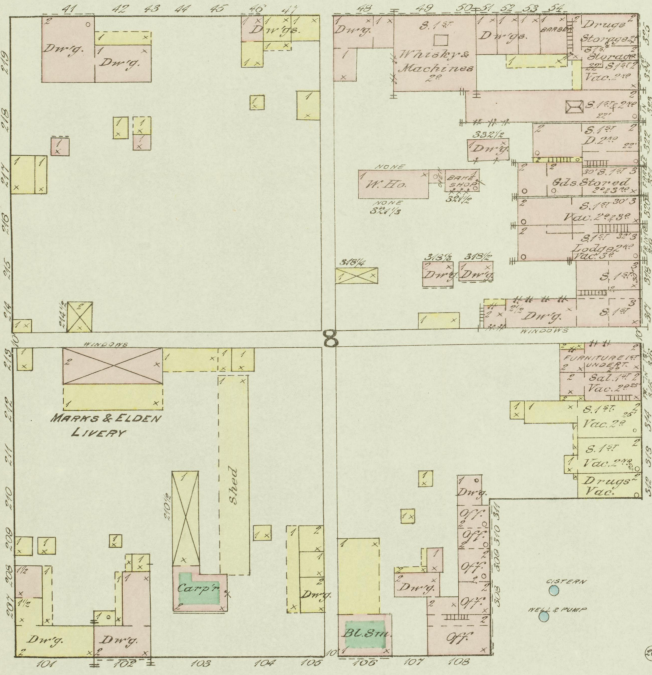
SHEET No 1

JULY 1886
BARDSTOWN
KY.

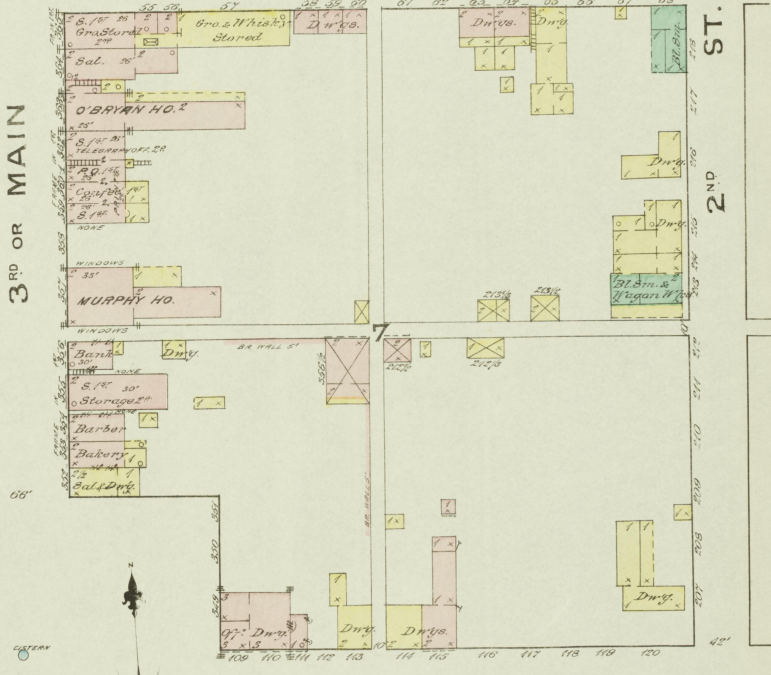


ARCH

4TH ST.



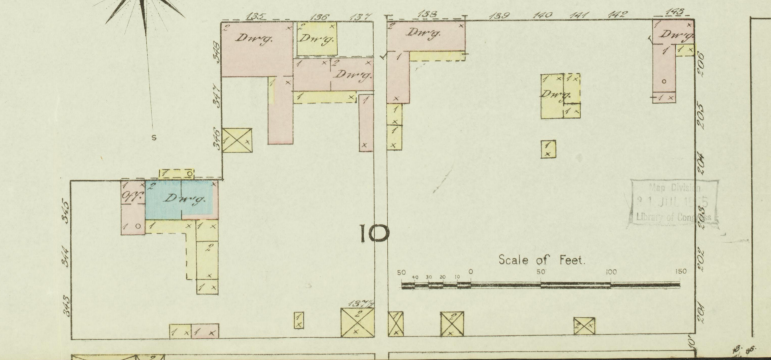
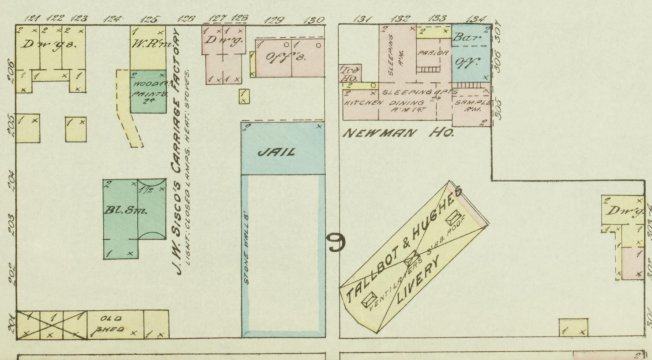
3RD OR MAIN



2ND ST.

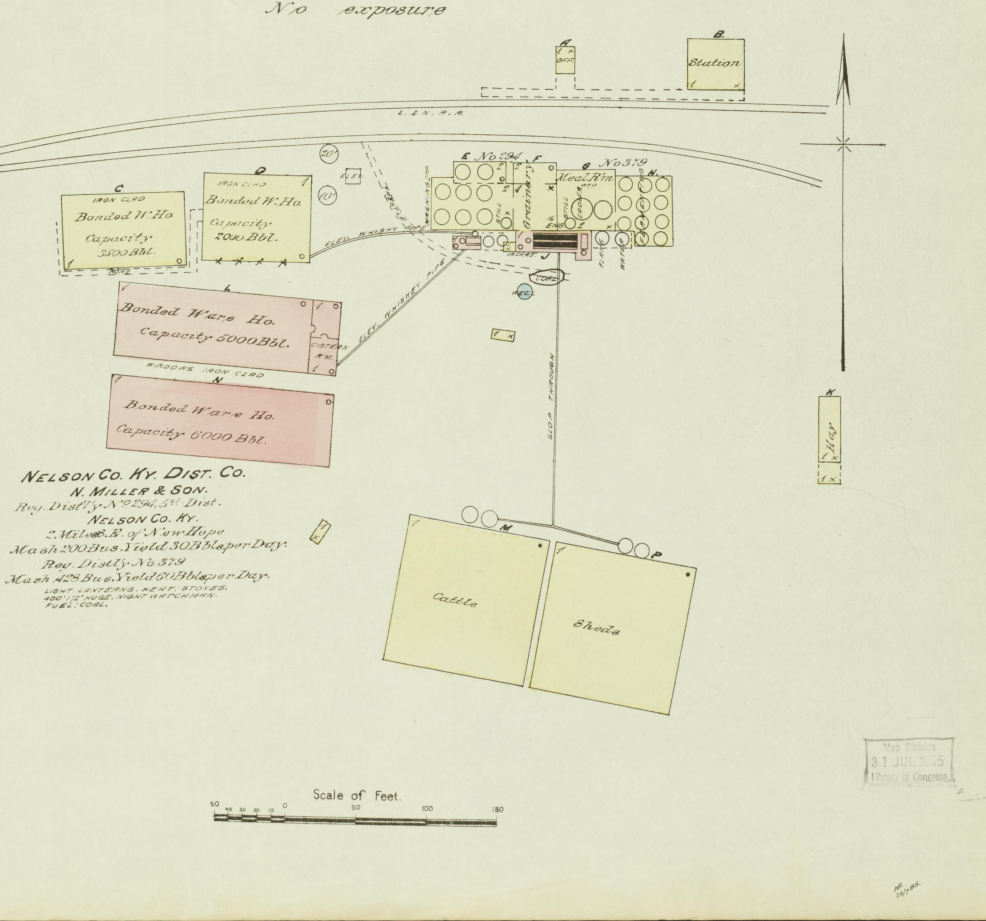
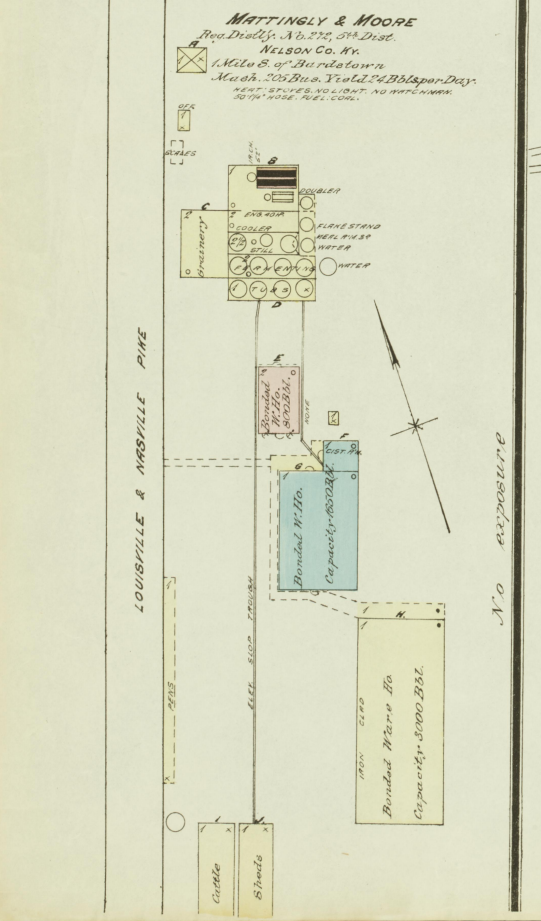
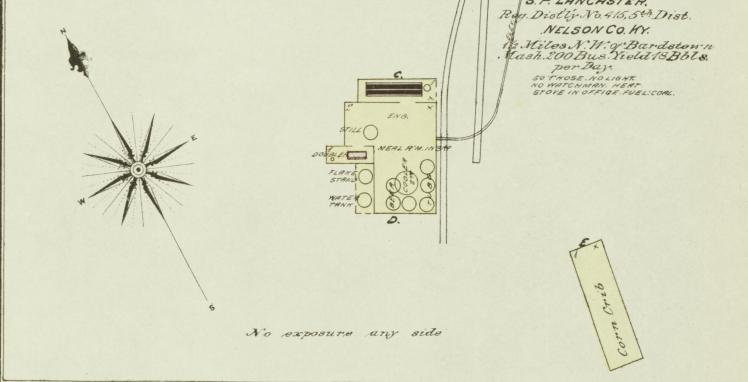
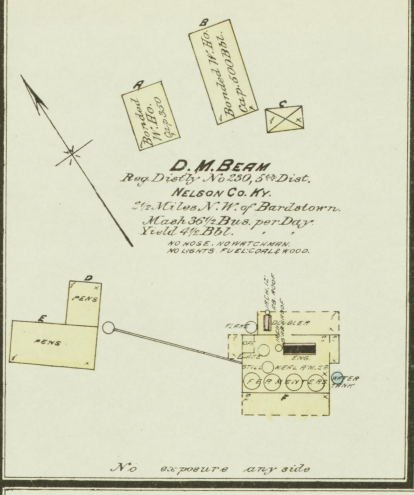
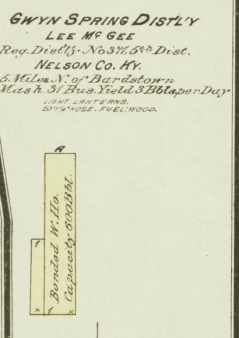
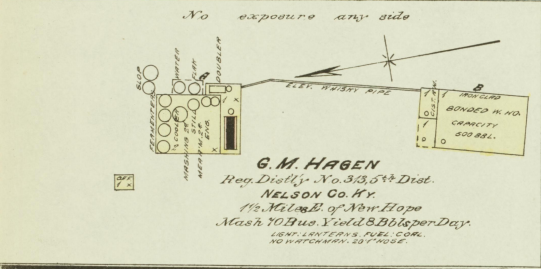
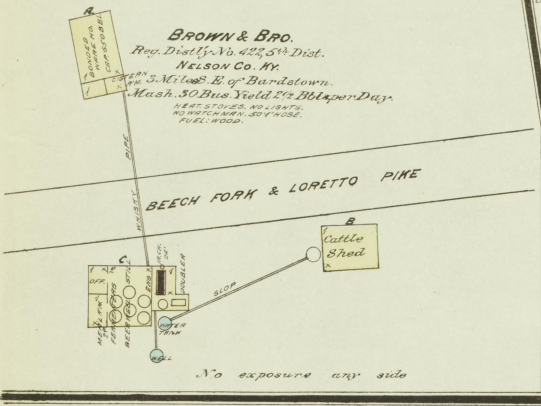
MARKET

ST.



Scale of Feet.

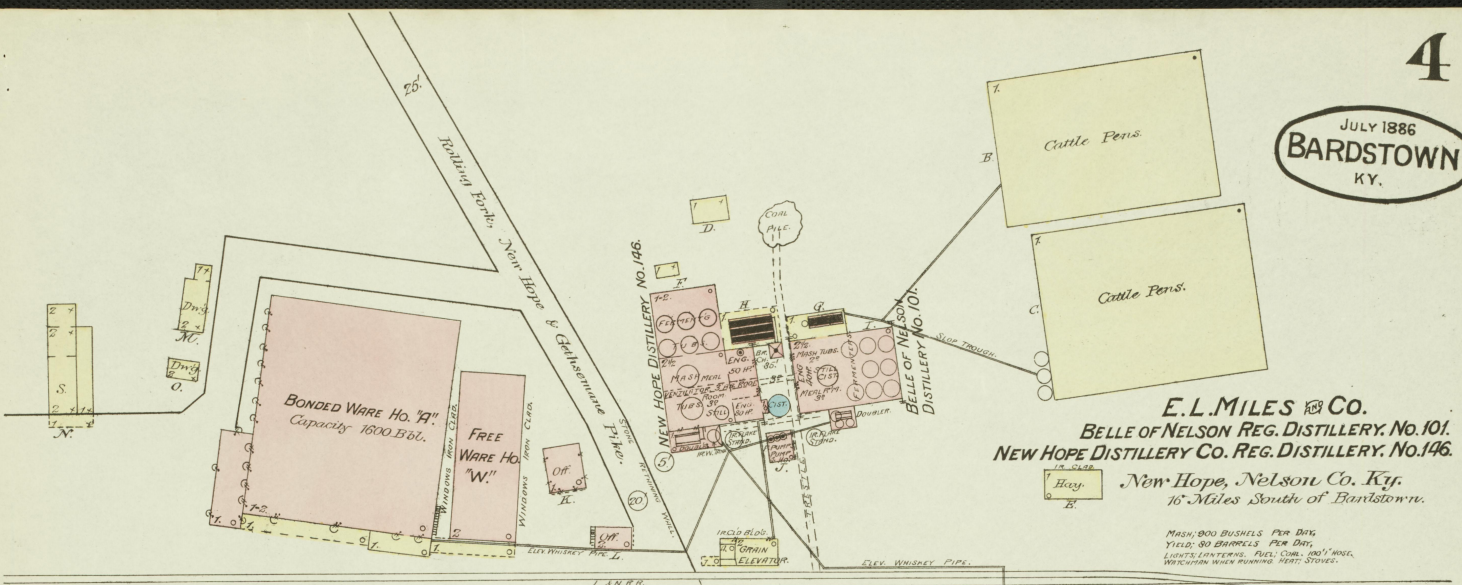
JULY 1886
BARDSTOWN
KY.



Scale of Feet

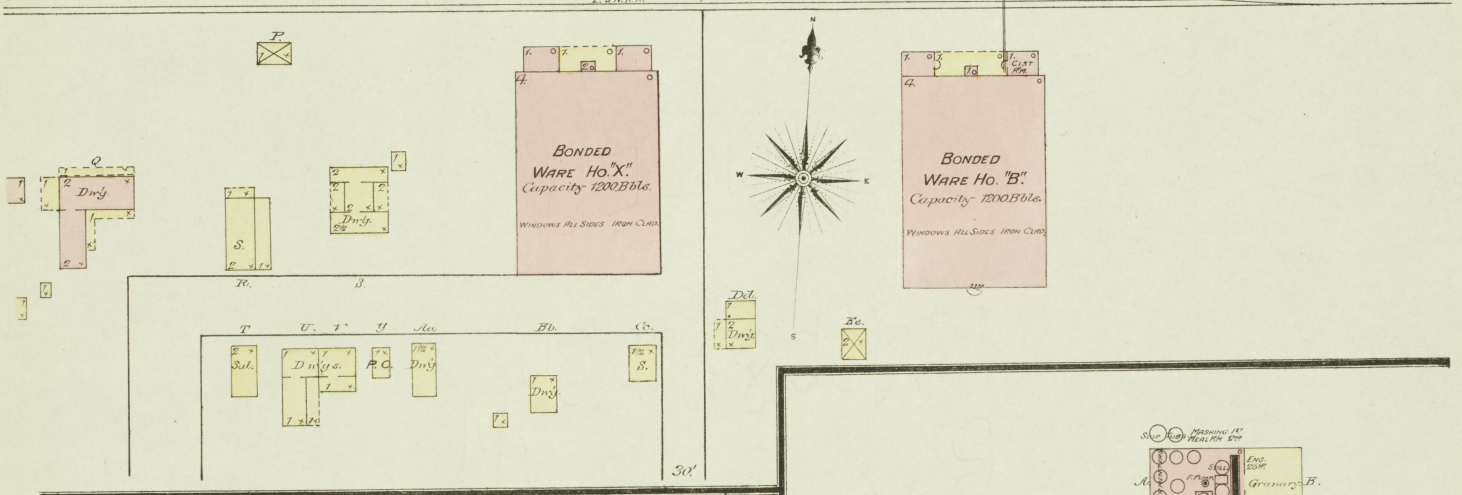
Map drawn
31 JUL 1886
Library of Congress

JULY 1886
BARDSTOWN
KY.



E.L. MILES & CO.
BELLE OF NELSON REG. DISTILLERY No. 101.
NEW HOPE DISTILLERY Co. REG. DISTILLERY No. 148.
 New Hope, Nelson Co. Ky.
 16 Miles South of Bardstown.

MASH: 900 BUSHELS PER DAY
 YIELD: 80 BARRELS PER DAY
 LIGHTS LANTERNS: FUEL: COAL 500' WASH
 WATER TUBS: 30' DIA. WASH
 WASH TUBS: 30' DIA. WASH

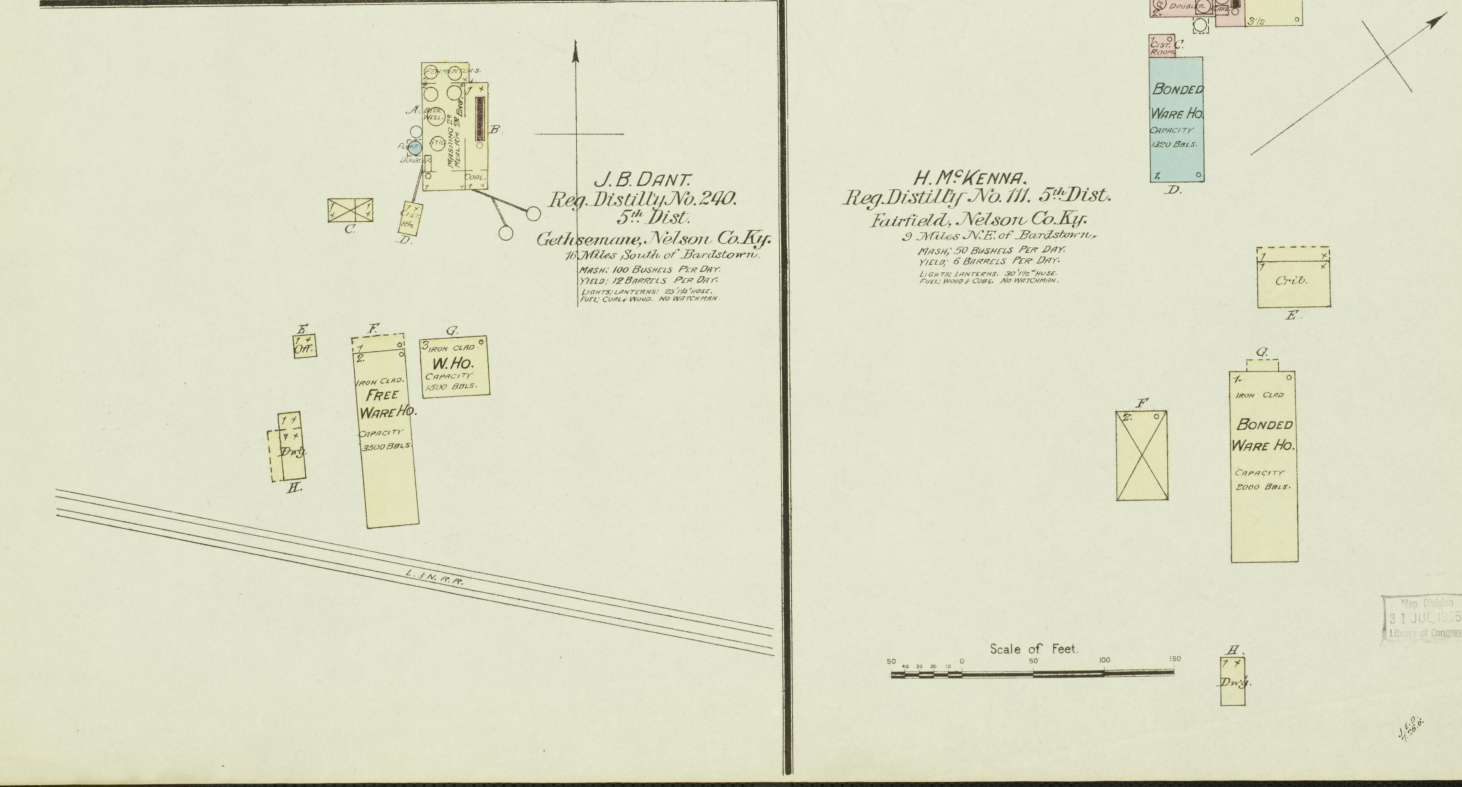


J. B. DANT.
 Reg. Distill. No. 240.
 5th Dist.
 Gethsemane, Nelson Co. Ky.
 10 Miles South of Bardstown.

MASH: 100 BUSHELS PER DAY
 YIELD: 12 BARRELS PER DAY
 LIGHTS LANTERNS: 30' DIA. WASH
 FUEL: COAL 500' WASH

H. McKenna.
 Reg. Distill. No. 111. 5th Dist.
 Fairfield, Nelson Co. Ky.
 9 Miles N.E. of Bardstown.

MASH: 50 BUSHELS PER DAY
 YIELD: 6 BARRELS PER DAY
 LIGHTS LANTERNS: 30' DIA. WASH
 FUEL: COAL 500' WASH



Scale of Feet.
 0 50 100 150

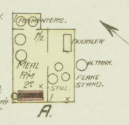
Map Dated
 31 JUL 1885
 Library of Congress

JULY 1886
BARDSTOWN
KY.

HENRY SUTHERLAND
Regist'd Distillery No. 168,
5th Dist. Nelson Co. Ky.
4 Miles S.W. of Bardstown.

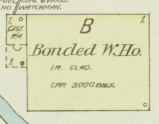
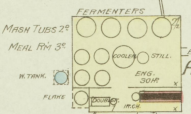


MASH 25 BUS. PER DAY
YIELD 3 BBL'S
NO LIGHTS.
FUEL WOOD.
60" 1 1/2" HOSE.
NO WINDMILL.

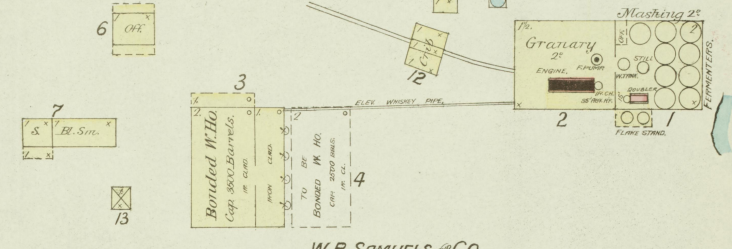
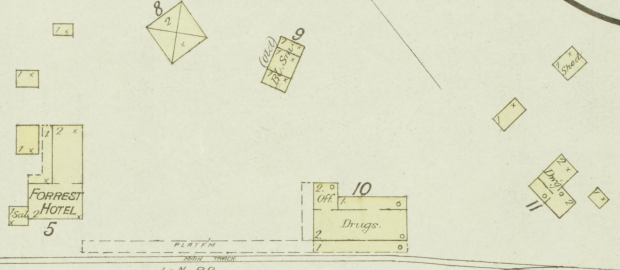


W.Ho. Detached 700' N.E. of SUTHERLAND'S DISTILLERY

F.G. WALKER
Regist'd Distillery No. 410
5th Dist. Nelson Co. Ky.
1 Mile W. of Bardstown.

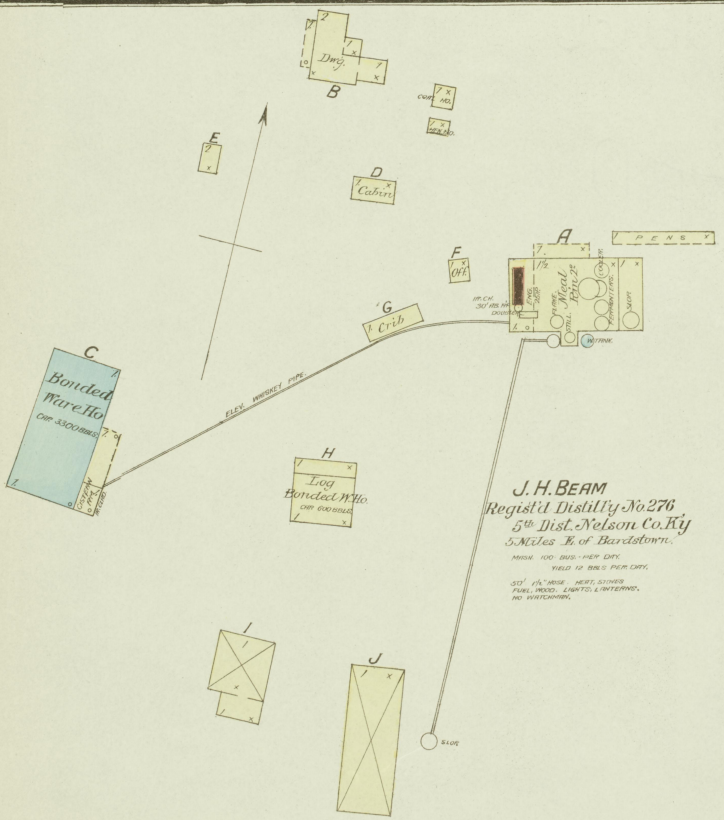


BARDSTOWN AND BOSTON
PINE



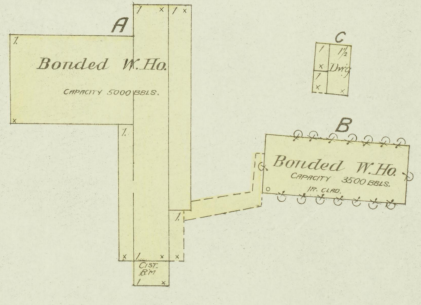
W.B. SAMUELS & CO.
Regist'd Distillery No. 291,
5th Dist. Nelson Co. Ky.
6 Miles N. of Bardstown.

MASH 250 BUS. PER DAY. YIELD 80 BARRELS PER DAY.
150' 1" HOSE. LIGHTS, LANTERNS,
HEAT, STOVE IN OFF.
NO WINDMILL. FUEL, COAL & WOOD.



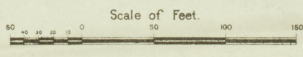
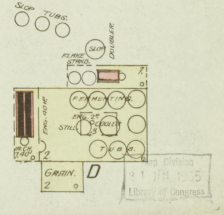
J. H. BEAM
Regist'd Distillery No. 276,
5th Dist. Nelson Co. Ky.
5 Miles E. of Bardstown.

MASH 100 BUS. PER DAY
YIELD 12 BBL'S PER DAY.
60" 1 1/2" HOSE. HEAT, STOVE,
FUEL, WOOD. LIGHTS & WINDMILL.
NO WINDMILL.

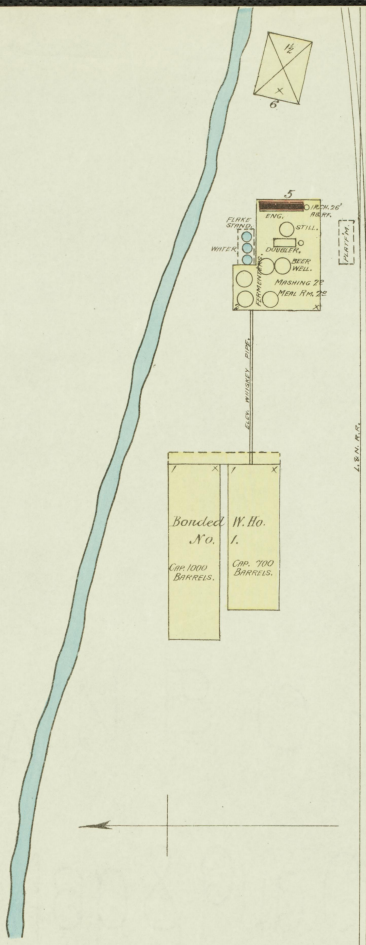


T. W. SAMUELS
Regist'd Distillery No. 145,
5th Dist. Nelson Co. Ky.
7 Miles N. of Bardstown.

MASH 100 BUS. PER DAY
YIELD 16 BBL'S
60" 1 1/2" HOSE. HEAT, STOVE,
LIGHT, LANTERNS. NO WINDMILL.
FUEL, COAL & WOOD.



JULY 1886
BARDSTOWN
KY.

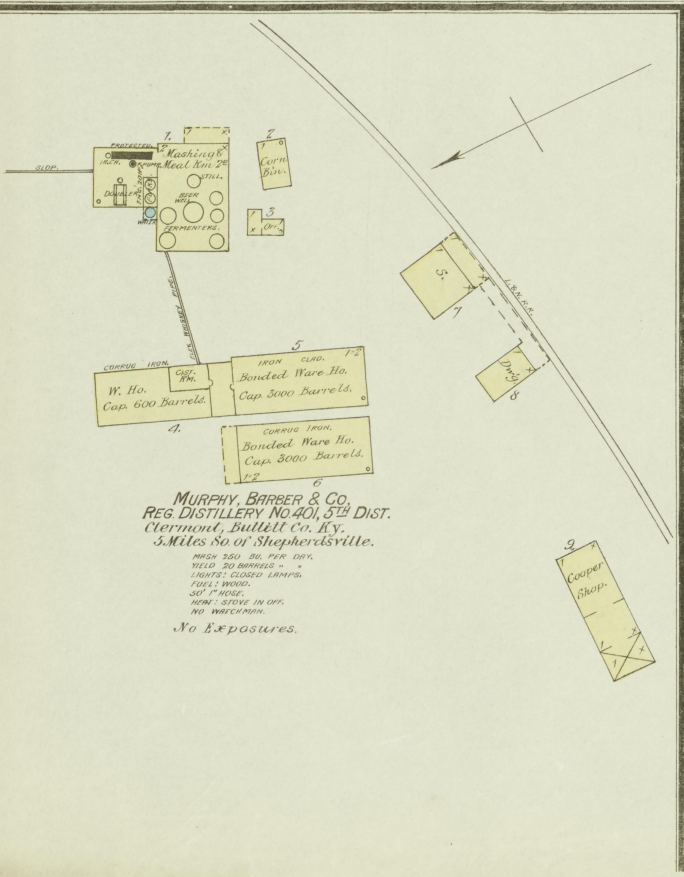


Banded W. Ho.
No. 2.
Cap. 1000 Barrels.

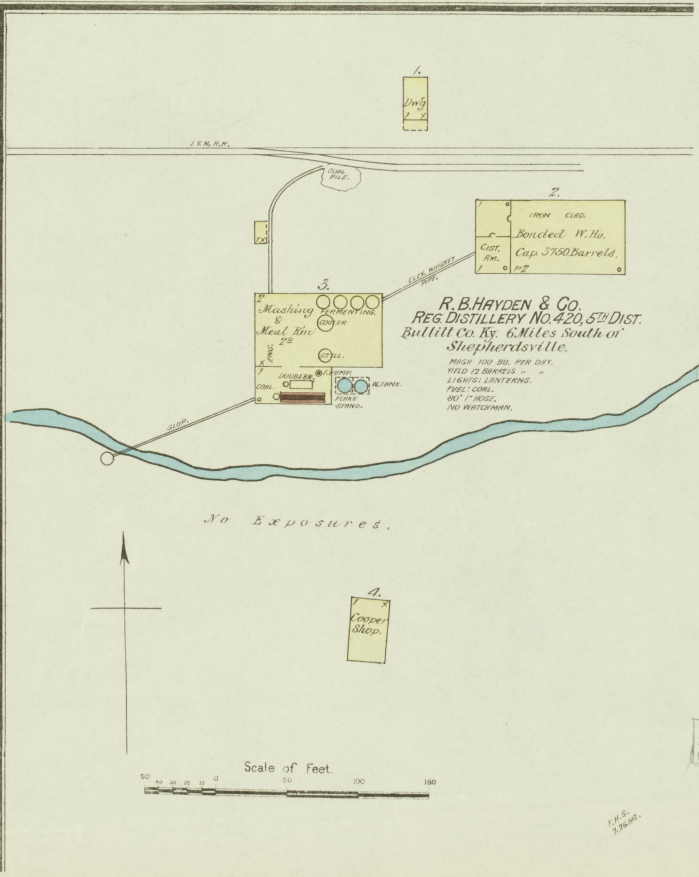
A. & B. CHAPEZE
REG. DISTILLERY NO. 266,
5TH DIST.
Chapeze Station Bullitt Co. Ky.
4 Miles So. of Shepherdsville.
MASH 300 BUS. PER DAY.
YIELD 30 BARRLS. "
LIGHTS: LANTERNS.
HEAT: STOVE IN OFF.
80" HOSE.
FEEL: CORK & WOOD.
NO WATCHMAN.

No EXPOSURES.

Old Ware Ho.



MURPHY, BARBER & CO.
REG. DISTILLERY NO. 401, 5TH DIST.
Clemont, Bullitt Co. Ky.
5 Miles So. of Shepherdsville.
MASH 320 BUS. PER DAY.
YIELD 30 BARRLS. "
LIGHTS: GLASS LANTNS.
FOUL WOOD.
SOFT TRUSS.
HEAT: STOVE IN OFF.
NO WATCHMAN.
No EXPOSURES.



R. B. HAYDEN & CO.
REG. DISTILLERY NO. 420, 5TH DIST.
Bullitt Co. Ky. 6 Miles South of
Shepherdsville.
MASH 100 BUS. PER DAY.
YIELD 12 BARRLS. "
LIGHTS: LANTERNS.
FEEL: CORK.
80" TRUSS.
NO WATCHMAN.

No EXPOSURES.

Scale of Feet
0 50 100 150

Map Publin
31 JUL 1886
Library of Congress